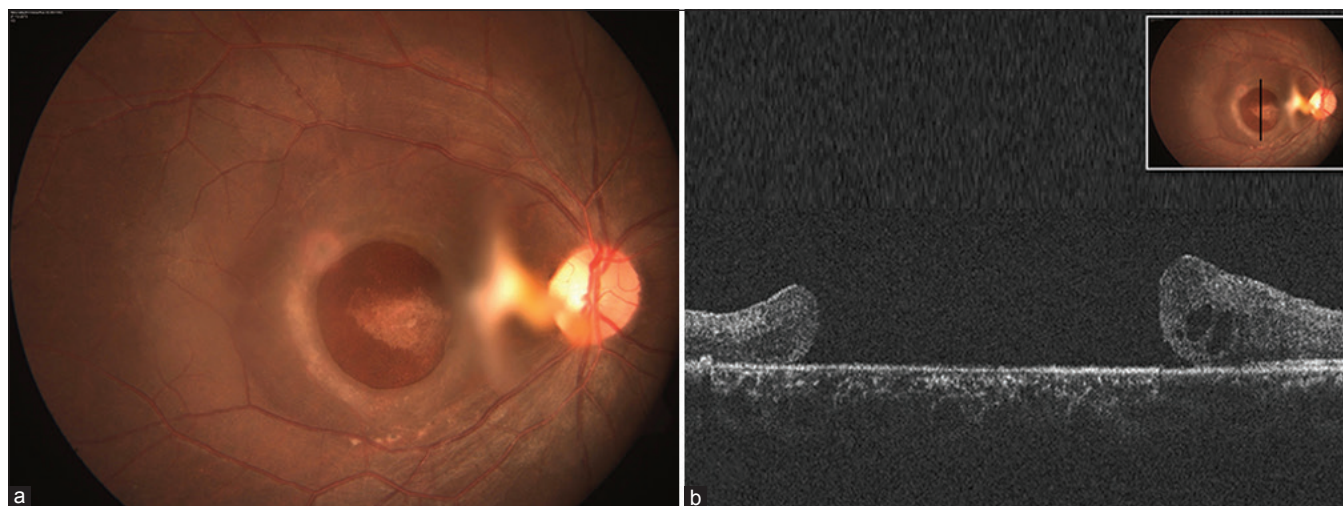


## Unilateral giant macular hole in a case of Alport syndrome



**Figure 1:** (a) Fundus photo showing the giant macular hole with vitreous opacity. The macular hole showed a thickened edge with hypopigmented retinal pigment epithelium underneath the hole suggestive of chronicity. (b) The vertical scan on OCT showed 3519 × 3111 microns sized macular hole with the presence of outer retinal cystic spaces

A 27-year-old man presented to us with right eye blurred vision since childhood. He was a known case of Alport syndrome. The best corrected visual acuity was 20/400 in the right eye and 20/20 in the left eye. The anterior segment was unremarkable. The right eye fundus showed a single giant macular hole with vitreous opacities. The macular hole showed a thickened edge with hypopigmented retinal pigment epithelium underneath the hole suggestive of chronicity [Fig. 1]. The left eye fundus was unremarkable. The macular hole measured 3519 × 3111 microns on the ocular coherence tomography. On reviewing the literature, only Ozdek *et al.*<sup>[1]</sup> have reported a larger macular hole than our case (3800 × 3200 microns). In addition to anterior lenticonus, development of large macular holes is an important cause for loss of central vision in patients with Alport syndrome. The exact etiology of such large macular holes is unclear, however, an abnormal Type IV collagen in the internal limiting membrane may contribute to macular hole formation.<sup>[2]</sup>

### Declaration of patient consent

The authors certify that they have obtained all appropriate patient consent forms. In the form the patient(s) has/have given his/her/their consent for his/her/their images and other clinical information to be reported in the journal. The patients understand that their names and initials will not be published and due efforts will be made to conceal their identity, but anonymity cannot be guaranteed.

### Financial support and sponsorship

Nil.

### Conflicts of interest

There are no conflicts of interest.

**Bhavik Panchal, Shreyansh Doshi, Avinash Pathengay**

Department of Vitreoretina and Uveitis Services,  
L V Prasad Eye Institute, GMRV Campus,  
Visakhapatnam, Andhra Pradesh, India

**Correspondence to:** Dr. Avinash Pathengay,

Department of Vitreoretina and Uveitis Services,  
L V Prasad Eye Institute, GMRV Campus,  
Visakhapatnam - 530 040, Andhra Pradesh, India.  
E-mail: avinash@lvpei.org

## References

- Ozdek SC, Pehlivanli Z, Sari A, Hasanreisoglu B. Bilateral giant macular hole in a patient with chronic renal failure. *Surg Lasers Imaging Retina* 2003;34:480-2.
- Shah SN, Weinberg DV. Giant macular hole in alportsyndrome. *Ophthalmic Genet* 2010;31:94-7.

This is an open access journal, and articles are distributed under the terms of the Creative Commons Attribution-NonCommercial-ShareAlike 4.0 License, which allows others to remix, tweak, and build upon the work non-commercially, as long as appropriate credit is given and the new creations are licensed under the identical terms.

Access this article online	
Quick Response Code:	Website: www.ijo.in
	DOI: 10.4103/ijo.IJO_650_19

**Cite this article as:** Panchal B, Doshi S, Pathengay A. Unilateral giant macular hole in a case of Alport syndrome. *Indian J Ophthalmol* 2019;67:1731.