

An insight on established retinal injury mechanisms and prevalent retinal stem cell activation pathways in vertebrate models

Rinchen Doma Sherpa  | Subhra Prakash Hui 

S. N. Pradhan Centre for Neurosciences,
University of Calcutta, Kolkata, India

Correspondence

Subhra Prakash Hui, S. N. Pradhan Centre
for Neurosciences, University of Calcutta,
35, Ballygunge Circular Road, Kolkata, India.
Email: sphsnp@caluniv.ac.in

Funding information

Council of Scientific and Industrial
Research, Grant/Award Number:
09/028(1146)/2020-EMR-I; Department
of Biotechnology, Ministry of Science and
Technology, Grant/Award Number: BT/
HRD/35/02/2006

Abstract

Implementing different tools and injury mechanisms in multiple animal models of retina regeneration, researchers have discovered the existence of retinal stem/progenitor cells. Although they appear to be distributed uniformly across the vertebrate lineage, the reparative potential of the retina is mainly restricted to lower vertebrates. Regenerative repair post-injury requires the creation of a proliferative niche, vital for proper stem cell activation, propagation, and lineage differentiation. This seems to be lacking in mammals. Hence, in this review, we first discuss the many forms of retinal injuries that have been generated using animal models. Next, we discuss how they are utilized to stimulate regeneration and mimic eye disease pathologies. The key to driving stem cell activation in mammals relies on the information we can gather from these models. Lastly, we present a brief update about the genes, growth factors, and signaling pathways that have been brought to light using these models.

KEYWORDS

animal models, retina injury, retina regeneration, retinal stem cells, zebrafish

1 | INTRODUCTION

The brain processes visual information when light energy transduces into neural activity in the retina. The close-knit components of the central nervous system (CNS), the brain, and its extension retina are thus the critical players in visual perception, thereby aiding in daily activities. While the brain remains well protected inside the skull, the eyes are quite susceptible to physical injuries and chemical accidents.¹ Furthermore, one's genetic makeup and increasing age also invite multiple numbers of eye diseases such as retinitis pigmentosa (RP), age-related macular degeneration (AMD), glaucoma, etc All this has contributed to the recent "World Reports on vision (2019)," which shows that a whopping 2.2 billion people globally fell victim to

visual impairment in the past year.² The discovery of the existence of adult retinal stem/progenitor cells among different vertebrate species³ and its high reparative activity in the case of lower vertebrates has presented us with a possibility to "self-heal" the retina one day.⁴ Consequently, high regeneration competent animals, which include the amphibian newts and *Xenopus*, teleost zebrafish (*Danio rerio*), and chick are thus being explored⁵ to investigate different genetic and epigenetic features, signaling pathways, and factors^{6,7} that regulate stem cell activation, thus gradually filling in the gaps of our knowledge of mammals, which appear to be the least competent among the group.⁸ With the hope of updating and giving researchers an idea about how these animal models have significantly shaped our understanding of the retinal regeneration process, in this review,

This is an open access article under the terms of the Creative Commons Attribution License, which permits use, distribution and reproduction in any medium, provided the original work is properly cited.

© 2021 The Authors. *Animal Models and Experimental Medicine* published by John Wiley & Sons Australia, Ltd on behalf of The Chinese Association for Laboratory Animal Sciences

we discuss the different developed injury mechanisms and then talk about underlying genes, growth factors and signaling pathways involved in retinal stem cell activation in different animal models.

2 | MECHANISMS OF RETINAL INJURY

The injury mechanism of the retina has shown a wide range of variations ranging from whole-cell retinal injury to exploiting each layer individually viz. photoreceptor,⁹⁻¹¹ ganglionic layer,¹² etc, using light, chemicals, transgenic lines, and genetic ablations. Various injury methods were applied with the following aims:

1. To determine where the regeneration capacity lies within the retina.
2. To study regenerative response during different modes of injury and be able to mediate whole-cell as well as targeted injuries, thereby mimicking diverse retinal diseases.

2.1 | Mechanical injury

Successful experiments with autoplasmic eye implantation in salamander larvae and restoration of optic nerve severing in newt¹³

were among the first significant research that provided evidence for the regenerative capabilities of the eye. Following these experiments, numerous amphibian and teleost fish models have been exploited using the mechanical mode of injury.^{14,15}

Mechanical injury of the retina is achieved through surgical procedures such as incisions, poke as exemplified in Figure 1A, or removal of a small part of the retina. The past two decades have witnessed various methods of retinal injuries such as transscleral injuries, poke injuries,¹⁶⁻¹⁹ and retinal detachments^{20,21} as a result of the experiments being performed on different animal models. Transscleral injury involves using a microknife to excise a small flap of the retina, where local excision of the retina with all the layers is done and used for the study of neuroretina regeneration.²² In poke or stab injury, eyeballs of the animal model are tilted with forceps and stabbed on the edges with a syringe, thus inflicting damage to all layers. Retinal incisions followed by subretinal injections of saline and hyaluronic acid help create retinal detachment, that is, separation of the neural retina from the underlying retinal pigment epithelium (RPE).^{20,21} This injury method helps study changes in photoreceptor outer segment apoptosis and regeneration.^{21,23} The use of mechanical injury for retina regeneration is one of the oldest yet most feasible injury mechanisms. Moreover, it is the best option for someone aiming to study whole-cell retinal injury because it achieves uniform damage to the retina.^{16,17,24}

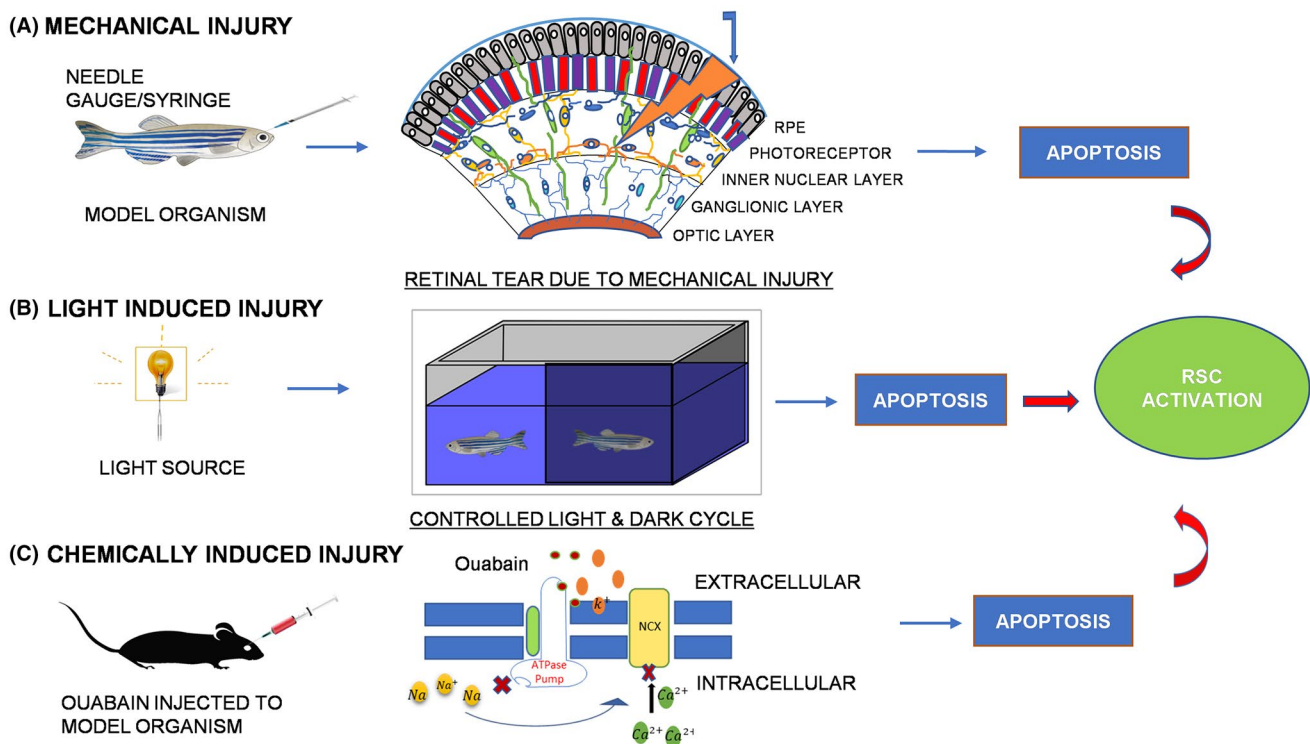


FIGURE 1 An illustrative representation of mechanical, light, and chemical induced injury models of the retina. A, In mechanical poke injury, a needle gauge/ syringe is used to poke a hole in the retina that causes uniform damage to all layers. B, In light-induced injury, disruption of the light/dark cycle is done by exposing model organisms to high-intensity light for varied periods. C, In chemically induced injuries such as ouabain toxicity, tissues of model organisms injected with ouabain show cellular apoptosis due to ouabain-mediated blocking of sodium-potassium ATPase pump, which causes an increase in intracellular sodium ion concentration that in turn inhibits the function of the sodium-calcium exchanger (NCX)

2.2 | Light-induced injury

Light is the environmental stimulus that is necessary for vision. However, constant long-term exposures or high-intensity light can be very damaging to the recipient's photoreceptor layer.²⁵ In the electromagnetic spectrum, the range of light between 400 and 1400 nm is the "retinal hazard region" as it is the range that is allowed to pass to the retina.²⁶ Although this range consists of only visible and short wavelength infrared light, visual complications may arise depending on the intensity of light and exposure time. Owing to its high exposure rate in humans, the blue light component (415–495 nm) has also been experimented with in animal models and has been shown to inflict damage to the photoreceptors and the retinal pigment epithelium layer as well.^{27–29}

Light-induced injury mechanism usually follows a disruption of the standard 10 hours light–14 hours dark cycle³⁰ to a long dark cycle followed by exposure to high-intensity visible light^{9,31} or ultraviolet (UV) light.³² Temporal variations for light-induced injury include long or short durations of exposure²⁷ that are repeated once or several times^{10,33} depending on the experimental setup as exemplified by Figure 1B. The light source may vary from tungsten halogen lamps,^{10,31,32} to metal halide lamps,⁹ and fiber optics,³⁴ with light intensities at the water interface being as great as 100 000 lux.³²

The 3 modes of light-induced injury include:

2.2.1 | Photomechanical injury

Laser-based irradiation of retinal pigment epithelium (RPE) has the ability to cause 2 distinct modes of cell damage depending on the time of exposure. These are thermal denaturation (exposure duration more than 10 μ s) and intracellular cavitation (exposure duration below 10 μ s).³⁵ For exposure duration of up to 10 μ s, which falls in the order of the thermal relaxation period of RPE, melanosomes show a very high increase in temperature ranging up to 150°C.^{36,37} Thus, cytoplasm contact with these melanosomes undergoes rapid vaporization, thereby creating microcavitation bubbles.³⁶ Rapid expansion and dissolution of these bubbles cause mechanical damage and induce apoptosis in the underlying RPE cells via disruption of lysozymes.³⁶

2.2.2 | Photochemical injury

Post light exposure, dissipated energy from excited chromophores such as lipofuscin and flavoprotein may lead to the production of reactive oxygen species (ROS).^{26,38} These chemicals are highly damaging to all cell types, and in the retina, they may initiate apoptosis of the light recipient photoreceptor layer.²⁶

2.2.3 | Photothermal injury

Light in the form of photons is capable of increasing the mean kinetic energy of the recipient molecules. When this energy dissipates,

molecular collisions lead to an increase in these molecules' temperature, thereby causing thermal damage to the cells involved.^{26,38} This injury mode is observed in laser light photocoagulation and optical coherence tomography (OCT)-guided laser injuries and has been experimented with in many animal models.^{39,40}

2.3 | Chemical injury

Although both mechanical and light injury can be used to target different retinal layers, mechanical injury best portrays whole-retina damage as, for light-induced injury, photoreceptor-specific damage can be well modeled. Chemical injury, on the other hand, by virtue of trial-and-error quantification of doses can precisely damage any retinal layer and thus presents a chance for mimicking multiple eye pathologies depending on the targeted layer. Popular choices of chemicals include ouabain, 6-hydroxydopamin (OHDA), hypoxia-inducing chemicals, *N*-methyl-D-aspartate (NMDA), nitroreductase/metronidazole (NTR/Mtz). Depending upon the targeted area and the animal model being used, these chemicals are quantified accordingly.

2.3.1 | Ouabain-mediated chemical injury

The cardiac glycoside ouabain acts by causing the inhibition of Na⁺/K⁺ ATPase, hence acting as a metabolic poison by increasing intracellular Na⁺ ion concentration that inhibits the sodium-potassium exchanger⁴¹ as shown in Figure 1C. Introduced by Maier and Wolberg in 1979,⁴² it can destroy the whole retina⁴³ when used in high doses, and intravitreal injection of lower doses is efficient in targeting different individual layers such as the inner nuclear layers,⁴⁴ amacrine layers,¹² and photoreceptors.^{11,42} The injury mechanism usually follows a microknife for incision followed by injection of ouabain in the intravitreal cavity.

2.3.2 | 6-OHDA mediated injury

Dopaminergic neurons are distributed throughout the retina and play an essential role in the growth and survival of retinal cells. 6-OHDA is a neurotoxin that targets noradrenergic and dopaminergic neuron destruction.^{45,46} The injury mechanism, similar to ouabain treatment, follows the making of scleral incisions using a microknife and then microsyringe-mediated administration of the chemical. 6-OHDA is quickly converted to its quinone form in solution, thereby generating free radicals. Hence, while using relatively higher doses of 6-OHDA, sodium ascorbate is added to slow down the build-up of these autoxidation products that may cause nonspecific damage.⁴⁶

2.3.3 | Chemically induced hypoxia

Cobalt chloride (CoCl₂) prevents iron inclusion in the heme, thereby decreasing hemoglobin that carries oxygen to different parts

of the body.⁴⁷ This causes hypoxia, leading to the production of hypoxia-inducible factors (HIF). Furthermore, CoCl_2 also inhibits the proteasome-mediated degradation of HIF, thereby causing hypoxic injury.⁴⁸ HIF, in turn, stimulates the production of vascular endothelial growth factors that causes neovascularization and aberrant angiogenesis.⁴⁹ CoCl_2 -mediated hypoxic injury involves intravitreal administration and has been used to target different retinal layers such as the photoreceptors¹¹ and ganglionic layers.⁵⁰

2.3.4 | NMDA receptor-mediated injury

High doses of NMDA are known to cause NMDA receptor-mediated influx of cations in massive amounts that lead to overexcitation of synapses, causing neuronal death.⁵¹ Based on this principle, NMDA has been used to injure animal models in different retinal layers such as the rods of the photoreceptor layer or retinal ganglionic layer as well as other layers.^{52,53}

2.3.5 | NTR/Mtz-mediated cell ablation

This injury lies in the ability of the *Escherichia coli* bacteria's nitroreductase (NTR) enzyme to reduce prodrug metronidazole (Mtz) into a cytotoxic DNA cross-linking agent, the expression of which causes cellular apoptosis. The technique is used to ablate various types of retinal cells such as the ultraviolet cones,⁵⁴ blue cones,⁵⁵ rods,^{56,57} and bipolar cells.⁵⁸ *Tg(zop:nfsB)EGFP^{nt20}* and *Tg(zop:nfsB)EGFP^{nt19}* are examples of 2 such transgenic lines that express the NTR promoter in the rod cells.^{56,59}

Chemical injury in the case of CoCl_2 can be best correlated with retinopathy of prematurity in which the retina in the infants is hypoxic because the central retinal vessels cannot reach the periphery, leading to infantile blindness,⁶⁰ whereas ouabain, 6-ODHA, NMDA, and NTR/Mtz induced cell ablations create a pathological environment that induces the regeneration process.^{12,43,55,59}

2.4 | Genetic models of retina diseases

With the help of genetic screening tools, scientists have collected numerous data and identified specific genes that are involved in certain retinal diseases.⁶¹ Inherited retinal diseases such as achromatopsia, RP, Leber's congenital amaurosis (LCA), AMD, etc comprise an extensive collection of heterogeneous mutations involving almost 250 genes.⁶² Besides, eye diseases such as diabetic retinopathy (DR) and glaucoma also contribute highly to eye diseases worldwide.⁶³ Experiments for treatment of such diseases would require disease modeling, which is made possible by creation of knockdown, knock-in, or insertion of mutated variants in the model organism. The science of transgenics, in which foreign genes can be inserted and expressed successfully in some other organism, and other genome editing techniques such as morpholino-based gene silencing,

transcription-activator like effector nucleases (TALENs), and clustered regularly interspaced short palindromic repeats (CRISPR-Cas) enzyme system make possible the imitation of diseases in a model organism.⁶⁴⁻⁶⁹ The creation of such genetic models of a disease hence provides a platform for novel therapeutics.⁶³ Here we have talked about a few genetic models of RP and DR; furthermore, a few examples from AMD^{70,71} and glaucoma^{72,73} can be seen in Figure 2.

2.4.1 | Genetic models of RP

The first retina degeneration model discovered as early as 1924 in mice showed mutations in rod phosphodiesterase *Pde6b* gene and later was shown to be involved in RP.⁷⁴ Retinitis pigmentosa is the largest subgroup of inherited retinal diseases and affects more than 1 million people worldwide.⁵ Using this information, many *Pde6* mutated animal models are created to copy the disease.^{5,74,75} For example, in the case of *Pde6b^{rd1/rd1}* mouse models, a null mutation creates a loss of rod cells within 2 weeks.⁷⁵ Recent RP models include *Pde6a^{V68 M/R562W}* compound heterozygotes in mice, which is an accurate homolog of human RP.⁷⁶ *Pde6b^{-/-}, Prkdc^{-/-}* is another novel immunocompromised RP model developed in mice.⁷⁷ It is produced by a cross between *Pde6b^{rd1/rd1}* mutants and *Prkdc^{-/-}* mutants that lack the expression of B cells, T cells, and natural killer T (NKT) cells. Thus, these double homozygotes help us understand the disease progression from both a genetic and an immunological viewpoint.⁷⁷

Rhodopsin mislocalization is often seen in RP patients; utilizing this information, *rho_{Q344ter}-dend2* *Xenopus laevis* transgenic models have been created in which human mutated rhodopsin is fused with Dendra fluorescent protein, and rhodopsin terminal amino acids are expressed in *Xenopus* to model RP.⁷⁸ CRISPR-Cas9 edited rhodopsin in *Xenopus* is another recent model of RP.⁷⁹ In zebrafish, morpholino-based ceramide kinase-like *cerkl* gene knockdown and expression of an autosomal dominant form of rhodopsin (Q344X) have been used to model RP.^{80,81} Apart from the genes mentioned above, approximately 67 genes have been mapped to be involved in heterogeneous RP and thus present targets for animal model development.^{75,82}

2.4.2 | Genetic models of DR

Diabetic retinopathy is an associated complication of diabetes mellitus and is shown in one-third of the diseased patients.⁶³ There are 5 genetic models of DR in mice; of these, leptin receptor deficient mouse model *Lepr^{db}* dates back to the 1990s and shows association with type 2 diabetes.⁸³ *Ins2^{Akit}*, on the other hand, mimics type-1 diabetes associated DR and happens as a result of *Insulin 2* gene mis-sense mutation.^{63,84} The amenability of forward and reverse genetics makes zebrafish another valuable model for genetic manipulation. To mimic DR in zebrafish, mutations in the von Hippel-Lindau tumor suppressor gene are created providing us with *vh1^{-/-}* zebrafish^{85,86} that phenotypically mimic detachment of the retina, vascular leakage, and macular edema.⁸⁷ Another novel model for DR is well

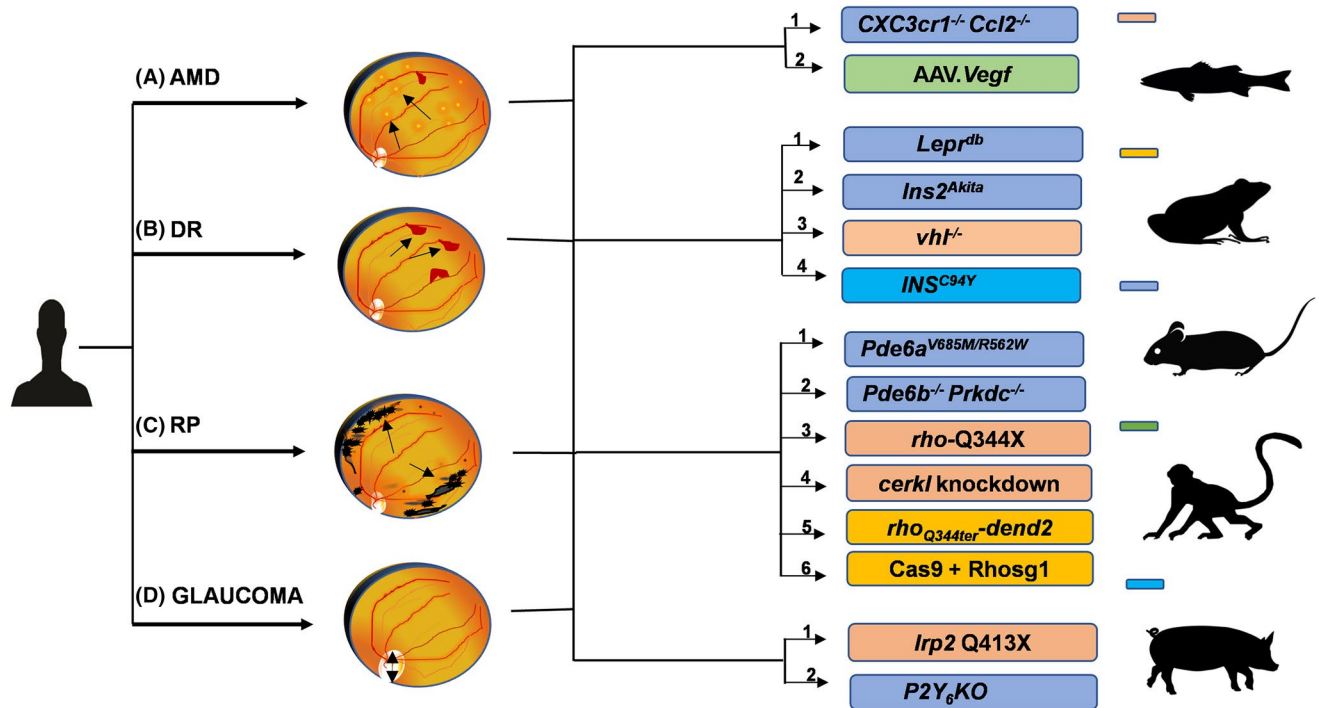


FIGURE 2 Genetic models of retinal diseases. A, An ophthalmoscopic view of the eye during AMD as identified by yellow extracellular membrane accumulation/drusen deposits: [1] CXCR1 is a CX3CR1/fractalkine chemokine receptor and has shown low transcript levels and SNPs during AMD; CCL2 is CC chemokine thought to play an immunoregulatory role in AMD CX3cr1^{-/-} Ccl2^{-/-} are thus homozygous mice created to model AMD. [2] The nonhuman primate Rhesus monkeys have been used to model AMD, DR, etc via AAV Vegf expression which controls neovascularization. (CXCR1: C-X-C motif chemokine receptor; CCL2: C-C motif ligand 2 chemokine; AAV-Vegf: adeno-associated viral vector mediated vascular endothelial growth factor expression). B, An ophthalmoscopic view of the eye during DR as identified by neovascularization and leaky blood vessels: [1] Leptin receptors are essential regulators of obesity; hence, mouse models of chronic hyperglycemia have been modeled in *Lepr^{db}* mouse mutant for leptin receptor. [2] *Ins2^{Akit0}* with missense mutation in insulin 2 gene is another mouse DR model. [3] Von Hippel Lindau protein regulates Hif levels that can induce angiogenesis, *vhl^{-/-}* biallelically inactivated zebrafish thus shows DR phenotype. [4] Large animal model of DR is the *INS^{C94Y}* transgenic pig created by mutating the insulin gene. (Lepr: leptin receptor; Ins/INS: insulin; vhl: von Hippel Lindau). C, An ophthalmoscopic view of the eye during RP identified by the presence of intraretinal melanin deposits/bone spicule pigments, a hallmark of RP: [1] Mutations in the *Pde6a* and *Pde6b* gene are known to cause RP. The compound heterozygote RP mice model *Pde6a^{V685M/R562W}* is an exact homolog of human RP. [2] *Pde6b* functions in the photo cascade transduction, and *Prkdc* encodes for catalytic subunit of DNA-dependent protein kinase DNA-PK. The *Pde6b^{-/-} Prkdc^{-/-}* is an immunocompromised mice model of RP that lacks T, B, and NKT cells. [3] This transgenic zebrafish model expresses a mutated human rhodopsin gene construct Rho-Q334X to model RP. [4] Single mutation in some genes such as *cerkl* has been shown to cause autosomal dominant RP. Thus, morpholino knockdown of *cerkl* has been used to mimic RP in zebrafish. [5] Rhodopsin mislocalization is one of the observed features of RP based upon this human class 1 rhodopsin mutation Q344ter has been fused to *dendra 2* fluorescent protein to mimic RP in frog. [6] CRISPR-Cas9 has also been used in frogs to create point mutation in rhodopsin gene and model RP phenotype in the animal model. (*Pde6a/b*: phosphodiesterase 6; *Prkdc*: protein kinase DNA-activated catalytic subunit; Rho: rhodopsin; *cerkl*: ceramide kinase like). D, An ophthalmoscopic view of the eye during glaucoma characterized by a relatively large optic cup resulting from loss of optic nerve due to high intraocular pressure. [1] The low-density receptor-related lipoprotein mutation at Q413X shows glaucoma-like phenotype in zebrafish. [2] Purinergic receptor *P2Y₆* is important in regulating the intraocular pressure, and thus its knockout has been used to model the disease in mice. (*P2Y₆*: purinergic receptor)

exemplified by *INS^{C94Y}* transgenic pig model made via expression of mutation insulin gene.⁸⁸

3 | ACTIVATION OF RETINAL STEM CELLS

As the name suggests, retinal stem cells (RSC) are progenitor cells specific to the retina and are induced exclusively to form the retinal cells. They are present throughout the vertebrate lineage³ but, in comparison with lower vertebrates higher vertebrates such as

mammals, are incapable of employing the regenerative property as opposed to their counterparts.⁸ This biased ability to regenerate may be due to the presence of stem cells alone not conferring the capability to regenerate but instead requiring a highly coordinated activity between the stem cell and its niche,⁶ which seems to be lacking in the case of mammals. These so-called niches are microenvironmental compartments that sustain neural stem cell and endow them the properties of self-renewal and lineage differentiation.⁸⁹ Certain conditions needed for creation of this proliferative niche include proper mode of stimulation in the form of injury, followed by

epigenetic chromatin alterations, expression of specific transcription factors, assembly of growth factors and immune cells, cell signaling initiation, and switching of cells from a glycolytic to the oxidative pathway.^{6,7,90} In the upcoming section, we have provided a list of retinal stem cells found in different vertebrates and briefly discussed the genes, growth factors, and signaling pathways that, together with these stem cells, help create a proper microenvironment for RSC activation among different vertebrate models. These have also been summarized in Table 1.

4 | RETINAL STEM CELLS IN DIFFERENT VERTEBRATES

4.1 | Retinal stem cells in teleost fishes

The most remarkable ability to regenerate the retina among the vertebrates is displayed by teleost fishes such as the zebrafish,⁹¹ where the growth of retina takes place throughout their life.³ The regions that have been identified in zebrafish with retinal stem cells include the ciliary marginal zone (CMZ), retinal pigment epithelium (RPE), and the Müller glia (MG).^{92,93}

4.1.1 | CMZ in zebrafish

Lying between the “*mitf*” gene expressing RPE and “*vsx2*” gene expressing neural retina, the CMZ is a zone of persistent neurogenesis²⁵ and can express retinal progenitor associated eye field transcription factors (EFTFs)^{89,94} as well as proneural genes such as *ngn2* and *ascl1*.⁹⁴ They can generate retinal cell types such as photoreceptors (cones), inner retinal neurons, and RPE upon injury.⁹⁵

4.1.2 | RPE in zebrafish

Retinal pigment epithelium, which lies between the neural retina and choroid, performs a host of functions and happens to be a prominent source of RSC in lower vertebrates.⁹³ Investigations have shown cellular repair to occur via transdifferentiation in the case of RPE-mediated regeneration.⁹⁶ Yet, relatively little is understood about the biology of RPE-mediated regeneration in higher vertebrates. Recent studies involving zebrafish have presented some new insights into this topic. The transgenic zebrafish line *rpe65a:nfsB-eGFP* enables retinal pigment epithelial cell specific expression of nitroreductase (*nfsB*) and green fluorescent protein (GFP) under the control of *rpe65a* enhancer, which facilitates NTR-Mtz-mediated RPE ablation.^{93,97} This study has shown RPE to follow a Wnt-mediated reparative pathway⁹³ and has accounted for the presence of macrophages and microglia indispensable for timely progression of proliferation.⁹⁸

4.1.3 | Müller glia in zebrafish

The molecular characterization of neuronal stem cells of the brain showed expression of properties identical to radial glia cells,^{99,100} therefore indicating that radial glial cells are the progenitors of neurons. Since the retina is also derived from the CNS and possesses its own glial cells, the “Müller glia,” these cells were a potential target for identifying stem cell progenitors in the eye. MG in zebrafish is a potent source of neuronal progenitor and post-injury become reactivated via expression of certain pluripotency genes such as *pax6b*,^{101,102} *ascl1*,^{17,33,103} *lin28*,^{17,95} and *stat3*.^{17,104} Ongoing research has been able to add more to this list. Gene expression analysis of *sox2* morpholino knockouts has also shown to cause a significant reduction in *ascl1a* and *lin28* levels, which states its importance in reprogramming.^{105,106} Myc is another well-known pluripotency inducing transcriptional activator,¹⁰⁷ and in zebrafish it has been found to regulate *lin28* positively via *ascl1a* expression and negatively via Myc histone deacetylase (*hdac*) inhibition of *her4.1*, a delta notch effector.¹⁰⁸ Oct4 is another transcription factor that, apart from up-regulating regeneration-associated genes, regulates proliferation and cell cycle exit respectively via inhibiting and eventually inducing transforming growth factor β (Tgfb) signaling.¹⁸

Several cytokines and growth factors are produced post-injury from MG, and some of these are known to cause diseases such as proliferative vitreoretinopathy in humans.^{109,110} However, in regeneration-competent organisms, where timely termination of proliferation occurs, some cytokines and growth factors have been shown to positively regulate regeneration. In the case of zebrafish, these include heparin-binding epidermal growth factor (HbEgf), fibroblast growth factor (Fgf), insulin, insulin-like growth factor (Igf), leptin, etc.¹¹¹⁻¹¹⁵ Tumor necrosis factor alpha (Tnfa) is another cytokine that regulates regeneration as it works upstream of *Ascl1a*.¹¹⁴ Midkine is another addition to the list and facilitates G1-to-S transition.¹¹⁶ Furthermore, blocking growth factors such as Tgfb¹⁸ and platelet-derived growth factor¹⁹ also tend to downregulate regeneration-associated transcription factors and are essential for regeneration.

The major signaling pathways already known to be involved in retina regeneration that positively regulates regeneration include Wnt/ β catenin pathway,^{111,115,117,118} Jak-stat pathway,¹¹⁹ and Pik3/Akt signaling pathway.⁴ Hedgehog pathway (Shh) is another known pathway involved in retina regeneration and can control both the proliferation and differentiation of MG.¹²⁰ Signaling pathways that inhibit regeneration include the Notch pathway,^{111,121,122} let-7 microRNA,¹⁰³ and Dkkopf (Dkk) pathway.¹¹⁷ Certain pathways seem to play both proproliferative and antiproliferative roles to drive differentiation depending upon their temporal expression. Insm1a-dependent pathway is one such pathway and can inhibit *ascl1a* expression and induce *ascl1a*-mediated *dkk* gene repression.^{123,124}

Furthermore, it can regulate controlled proliferation by inhibiting *hb-egfa* gene expression.¹¹⁶ Tgfb-mediated upregulation of matrix metalloproteinase *mmp2* during the earlier phases of injury

TABLE 1 List of endogenous retinal stem cells source across the vertebrate lineage, their characteristics (in vivo), and an updated list of growth factors, cytokines, and signaling pathways discovered using different animal models involved in retina regeneration

Model organisms	Source of RSC	Characteristics of endogenous RSC (in vivo)	Signaling pathways		
			Growth factors and cytokines	Inhibitory	
Fish (zebrafish)	1.CMZ	Proliferate Differentiate	HbEgf, Fgf, Insulin, ILGF, Leptin, Midkine, PdGF. ^{17,18,108,111-114}	Wnt/ β -catenin, Jak/stat, Hedgehog, Insm1, Tgf β signaling. ^{4,1792,108,114,116-119,122,123}	Let7 microRNA, Dkk Notch, Insm1, Tgf β signaling. ^{17,102,108,116,120-123}
	2.RPE	Proliferate Differentiate			
	3.MG	Proliferate Differentiate			
Amphibians	1.MG	Proliferate Differentiate	Fgf, Heparin. ^{134,140,143,144}	Wnt/ β -catenin, Hedgehog, MAPK, Heparin-Thrombin pathway. ^{132,134,135,140,143,144}	
	2.CMZ	Proliferate Differentiate			
	3.RPE	Proliferate Differentiate			
Birds	1.CMZ	Proliferate Differentiate	FGF, Insulin, HB-EGF, BMP, retinoic acid, kainic acid. ^{141,148-157,163,164}	SHH/FGF/Erk, Canonical BMP, FgFR/MEK/Erk, Jak-stat, Notch, mTor, hedgehog. ^{142,148,150,151,153,161,162}	β -Catenin, Hedgehog, Glucocorticoid signaling. ^{148,149,159}
	2.IPE*	Proliferate Differentiate			
	3.RPE*	Proliferate Differentiate			
	4.MG	Proliferate Differentiate			
Mammals	1.CB	Proliferate Differentiate	FGF, Retinoic acid, insulin, EGF, HB-EGF & progranulin. ^{156,184,185}	Notch signaling, C-kit, WNT, mTor, hedgehog. ^{170,171,175,188,189,191}	Hippo pathway, Nf1. ^{182,186}
	2.RPE	Proliferate Differentiate			
	3.IPE*	Proliferate Differentiate			
	4.MG*	Proliferate Differentiate			

Note: "+" indicates in vivo proliferation and differentiation; "-" indicates absence of in vivo proliferation and differentiation.

*Studies on bird and mammalian IPE have shown their ability to proliferate but only in vitro condition as of now.^{148,178} *On the other hand, RPE in birds and MG in mammals require external supplementation of growth factors or manipulated gene expression for successful reprogramming.^{153,182,183}

promotes MG proliferation, and its recombinant form upregulates regeneration-associated genes viz. *oct4*, *ascl1a*, *lin28*, etc.¹⁸ Later stages show Tgfb-mediated proliferative gene repression via activation of the neuroD complex for cell cycle exit.¹⁸

4.2 | Retinal stem cells in amphibians

Amphibians, like the teleost fishes, possess massive regeneration potential. Urodele newt, salamander, and anuran *Xenopus* are popular models for eye regeneration studies.¹²⁵⁻¹²⁷ Retinal stem cells in amphibians have also been identified in the MG, CMZ, and RPE.

4.2.1 | Müller cells in amphibians

Until very recently, MG in the case of amphibians was considered not to possess any proliferative abilities. However, detection of proliferating cells in newts and *Xenopus* larvae^{128,129} has paved the way for MG to be a probable source.^{128,129} While current findings support this idea, a recent experiment has revealed more profound reactivation in cells from older organisms than from younger ones,¹³⁰ which opposes the general feature of regeneration; hence, MG cells in amphibians need further investigation.

4.2.2 | CMZ in amphibians

Similar to the fishes, amphibians such as *Xenopus* also express RSC markers along the peripheral region of CMZ and follow a centripetal pathway of retinogenesis during development and regeneration.¹³¹⁻¹³⁴ Stem cell markers such as *pax6* and *six3* show high expression at the periphery; this is followed by neurogenic genes such as *delta* and *notch*, and finally proneural genes such as *neuroD* towards the center.¹³¹

In the past decade, protooncogenes such as *c-myc* and *n-myc*, which happen to be important cell cycle regulators, have also been shown to have centripetally increasing expression.¹³² Signal transduction pathways also work simultaneously for successful development and regeneration and, to name a few, include the canonical Wnt and the Shh pathway.^{133,135,136} While the former promotes proliferation, the latter promotes both proliferation and differentiation via Sprf1-mediated Wnt inhibition.¹³³

4.2.3 | Retinal pigment epithelium in amphibians

The other important mode of retina regeneration in amphibians is “transdifferentiation” of the RPE seen in urodeles^{137,138} and more recently has also been shown in anurans.¹²⁶ This is a mechanism where the cell dedifferentiates and returns to a point where it can switch lineages and hence redifferentiate into another cell type.¹³⁹

Investigating the molecular mechanism underlying RPE-mediated retinogenesis has shown that RPE goes into a brief, unique

multipotent state, and unlike mammals where RPE proliferation is associated with PVR, amphibian RPE is well reprogrammed for recovery.¹⁴⁰⁻¹⁴² This reprogramming involves the expression of pluripotency factors such as C-myc, Klf4, and Sox2 post injury which takes cells to a dedifferentiated state.¹⁴³ This follows the expression of *pax6* and *mift* genes that accounts for redifferentiation. These RPE cells then undergo cell cycle entry initiated by Fgfs and Igf1, which in turn induce MEK-Erk and heparin-susceptible pathways.¹⁴¹ In the case of newts, apart from the expression of EFTFs of which *pax6* shows 2 variants,¹⁴³ multipotency state regulates via expression of pluripotency factors C-myc, Klf4, and Sox2.¹⁴⁰ In the case of *Xenopus*, RPE-mediated regeneration depends on Fgf-dependent MAPK pathway.^{144,145}

4.3 | Retinal stem cells in birds

In the case of birds, the chick is used as a popular model organism for studying retina regeneration. The CMZ, iris pigment epithelium (IPE), RPE, and MG are 4 regions that have been identified to contain retinal stem cells in the chick.^{142,146-148}

4.3.1 | CMZ in chick

The expression of multipotent progenitor associated transcription factors and incorporation of BrdU at the peripheral margins of retina in chick have shown the capability of cells in CMZ to undergo regeneration.¹³⁷ However, unlike their cold-blooded counterparts, CMZ in chick possesses restricted capabilities and can only produce bipolar and amacrine cells.¹³⁷ Signaling pathways such as sonic hedgehog alongside FGF signaling¹⁴⁹ have been shown to facilitate cellular reprogramming in chick CMZ. Moreover, both pathways are interdependent and work via Erk pathway.¹⁵⁰ Beta-catenin pathway in chick CMZ, on the contrary, hinders entry into the cell cycle.¹⁵¹ The canonical BMP pathway is another important regulator of regeneration that induces regeneration via activation of Smad and upregulation of FGF signaling.¹⁵²

4.3.2 | Iris pigment epithelium in chick

Cell culture studies on IPE derived from postnatal chickens have shown multipotent progenitor expression and, thus, the capability to proliferate and undergo depigmentation. Hence, they are also as a potential source of RSC.¹⁴⁸

4.3.3 | Retinal pigment epithelium in chick

Similar to amphibians, RPE-mediated transdifferentiation for retina regeneration is also known to occur in birds. Postinjury transcription factors along with pluripotency inducing factors viz. SOX2, CMYC,

and KLF4 are expressed transiently.¹⁵³ RPE in chick has also shown FGF to be an essential player in regeneration,^{147,154} and signaling occurs via fibroblast growth factor receptor (FGFR)/MEK/Erk pathway¹⁵⁵ with *Lin28* as one of the downstream targets.¹⁴⁷ Contrary to the CMZ, the SHH pathway in RPE has been shown to inhibit the transdifferentiation process.¹⁴⁹

4.3.4 | Müller glia in chick

MG is the most studied retinal stem cell niche in the case of the chick, owing to its expression of proliferation markers such as PAX6, ASCL1, CEH10, NOTCH, FOXN4, etc.,^{138,156} which renders it high neurogenic potential. Like RPE and CMZ in chick MG, FGF is a key player that contributes well to proliferation.^{150,157} The use of insulin,¹⁵⁷ HB-EGF,¹⁵⁸ and bone morphogenetic protein (BMP)¹⁵⁹ has also shown positive results. Notch signaling,^{149,160} glucocorticoid receptor signaling,¹⁶¹ and sonic hedgehog signaling¹⁶² are some known pathways that regulate MG proliferation in birds. Recent additions to the list include the following: Jak/stat pathway, which promotes MG progenitor cell proliferation but has been shown to be not as efficient in neuronal differentiation¹⁶³; another mammalian target of rapamycin (mTOR) pathway has also been shown to promote MG reprogramming as its inhibition has a significant effect on PAX6 levels. Stimulatory pathways such as hedgehog and WNT are also blocked on mTOR inhibition.¹⁶⁴ Activation of retinoic acid signaling pathway¹⁶⁵ and growth hormone treatment¹⁶⁶ have also surfaced as recent findings in chick MG regeneration.^{144,145} Moreover, the existence of crosstalk between FGF and notch¹³⁹ and FGF and hedgehog,¹⁴¹ and its capability to activate the Jak-stat pathway¹⁴² and mTOR signaling,¹⁴³ makes it a focal point in the case of chick regeneration.

4.4 | Retinal stem cells in mammals

The regenerative potential of mammalian retina has long been questioned owing to their incapability to “self-heal” upon injury or pathological conditions. However, this “incapability” has proved to be a myth owing to the success of experiments that have shown the presence of RSC existing in the quiescent form in mammals in different locations within the retina. These include the ciliary body (CB), IPE, RPE, and MG.¹²⁷ The knowledge gathered from regeneration-competent animal models and its application in mammals has helped unravel certain intrinsic and extrinsic factors and pathways that induce retinal stem cell activation.

4.4.1 | The ciliary body in mammals

The CB or retinal margin in higher vertebrates represents a location of stem cells that corresponds to the ciliary marginal zone in the case of lower vertebrates.¹⁶⁷⁻¹⁶⁹ In vitro analysis of the CB in both mice

and humans shows that they are capable of forming neurospheres that express RSC markers and generate most retinal cell types, including photoreceptors.^{170,171} Notch, WNT, and C-kit are the signaling pathways that can regulate CB stem cell activation.^{172,173}

4.4.2 | Retinal pigment epithelium and iris pigment epithelium in mammals

Subpopulations of cells both in the RPE and the IPE have shown retinal progenitor properties¹⁵⁵ making them a probable target for studying eye regeneration.^{143,174} In the case of mammalian RPE, peripheral portions of rat retina have shown the ability to enter the cell cycle and proliferate. Similarly, experiments with dedifferentiated RPE transplanted into injured rat eye and human eye have also shown successful repairment.^{175,176} A recent finding suggests the involvement of mTOR signaling for RPE-mediated regeneration in humans.¹⁷⁷

In the case of IPE cells, in vitro studies on rodent and pigs have also demonstrated the ability of IPE to proliferate on addition of fibroblast growth factors.¹⁷⁸

4.4.3 | Müller glia in mammals

Unlike fish and amphibian MG, the MG in mammals tends to maintain its quiescence even postembryonically and respond to injury with prolonged reactive gliosis.^{179,180} That mammalian MG also possessed the capability to evade this quiescence was first confirmed in a retinal explant culture study of retina taken from NMDA-injured Sprague Dawley rats, which managed to produce bipolar cell rod photoreceptors.⁵³ *Ascl1a* overexpression alongside a histone deacetylase inhibitor has been shown to relatively upregulate MG proliferation in mice; however, the effects seem to be transient.^{181,182} Findings in a recent paper have shown that the transient nature of proliferation is due to the presence of Nuclear factor 1 (Nf1), a transcription network that inhibits *Ascl1a* and works to promote reactive gliosis instead of regeneration in mammals.¹⁸³ Another gene, *Lin28a*, a posttranscriptional regulator, can also induce reprogramming as it can control the formation of MG or other neural lineages depending upon its expression or deletion.^{184,185} Neurogenin-2, a basic helix-loop-helix (bHLH) transcription factor, is another potential candidate that activates MG regeneration.¹⁸⁶ Taking hints from regenerative models, many growth factors have been identified that help stimulate MG differentiation in mammals. These include retinoic acid, FGF, insulin, epidermal growth factor (EGF), HB-EGF, and progranulin.^{158,187,188} Regarding the signaling pathways involved, the most recent inclusion is the “hippo pathway,” which is a conserved kinase pathway that works during development.¹⁸⁹ Hippo pathway-mediated phosphorylation of transcriptional cofactor Yes-associated protein (YAP) influences cyclin D1 levels required for the initial burst in MG reprogramming.¹⁹⁰ Apart from these well-known signaling pathways that are already known to us, the WNT and Notch pathway positively

regulates MG proliferation,^{191,192} with Notch acting as an inhibitor of CDK inhibitor p27^{kip}.¹¹⁹³ Intraocular injections of SHH also stimulate MG proliferation and enhance neurogenic potential.¹⁹⁴

5 | DISCUSSION

In vertebrates, the “regenerative neurogenesis,” that is, the ability of postembryonic establishment of functional neuron regeneration, is said to exist,¹⁹⁵ but this feature appears to be compromised in higher vertebrates. Analysis of the above-mentioned endogenous retinal stem cells have helped to unveil species-specific trends and pathways followed during retina regeneration, revealing what appears to be missing in mammals. For instance, while the CMZ shows high regenerative potential in fish and amphibians, chick and mammalian CMZ seems to require the presence of additional mitogens and signaling factors.¹⁹⁶ Similarly, in comparison with the amphibian RPE that transdifferentiates its way to regenerate the retina, mammalian RPE seems to have preserved only a certain fraction of the ability to proliferate.¹⁷⁴ Moreover, the regulatory elements required for induction of transdifferentiation seem to be lacking in mammals.^{174,196} Regarding the Müller glia, *Ascl1* upregulation appears to be key in facilitating retina regeneration both in fish and birds. MG-specific expression of *Ascl1* in combination with a histone deacetylase inhibitor has shown to activate regenerative potential in mammals as well, but the results appear to be transient.¹⁸² Recent experiments have shown that this state of dormancy of mammalian MG is mediated by a dedicated gene regulatory network that upregulates upon injury.¹⁸³

The evolutionary aspect of regeneration is far from being understood. However, loss of such recuperative powers in higher vertebrates has been speculated to occur for resolving wounds in the best possible way and to increase the reproductive fitness.¹⁹⁷ In reality, loss of vision in humans has the potential of exacerbating tremendous socioeconomic pressure. Animal models of retina regeneration present us with an opportunity to solve this mystery utilizing an “in vivo” platform that allows for understanding complex interactions happening during the process. These models have allowed the establishment of injury mechanisms that happen to be the first-hand stimulus for RSC activation and hence allow us to explore the underlying molecular mechanisms. Furthermore, they also serve excellently as eye disease models, thereby helping to understand the pathophysiology of the disease and, hence, designing and trial of therapeutic drugs. The findings in one animal model pave way for experimenting with the same in another animal model and allow for a broader understanding of relatedness or heterogeneity of retina regeneration activation among different species. The information thus gathered from these models about the underlying regeneration-associated molecules and pathways can ultimately be used as experimental targets in mammalian models and gradually in humans.

ACKNOWLEDGMENTS

We thank Dr Sujay Ghosh, Dr Arindam Biswas, and Puja Rai for the critical reading of the manuscript. Part of the review is supported by

the Ramalingaswami award to SPH and grant received from DBT, Govt of India (BT/HRD/35/02/2006). RDS is recipient of junior research fellowships from CSIR, Govt. of India (09/028(1146)/2020-EMR-I).

CONFLICT OF INTEREST

The authors state no conflicts of interests.

ORCID

Rinchen Doma Sherpa  <https://orcid.org/0000-0002-9223-0289>

Subhra Prakash Hui  <https://orcid.org/0000-0001-5018-4918>

REFERENCES

- Pargament JM, Armenia J, Nerad JA. Physical and chemical injuries to eyes and eyelids. *Clin Dermatol*. 2015;33(2):234-237.
- Blindness and vision impairment. <https://www.who.int/news-room/fact-sheets/detail/blindness-and-visual-impairment>. Accessed May 2, 2020.
- Reh TA, Fischer AJ. Retinal stem cells. *Meth Enzymol*. 2006;419:52-73.
- Goldman D. Müller glial cell reprogramming and retina regeneration. *Nat Rev Neurosci*. 2014;15(7):431-442. <https://doi.org/10.1038/nrn3723>
- Samardzija M, Neuhauss SCF, Joly S, Kurz-Levin M, Grimm C. Animal models for retinal degeneration. In: Pang I-H, Clark AF, eds. *Animal Models for Retinal Diseases*. Vol 46. Neuromethods. Totowa, NJ: Humana Press; 2010:51-79.
- Doetsch F. A niche for adult neural stem cells. *Curr Opin Genet Dev*. 2003;13(5):543-550.
- Wagers AJ. The stem cell niche in regenerative medicine. *Cell Stem Cell*. 2012;10(4):362-369.
- Sánchez Alvarado A, Tsonis PA. Bridging the regeneration gap: genetic insights from diverse animal models. *Nat Rev Genet*. 2006;7(11):873-884.
- Bernardos RL, Barthel LK, Meyers JR, Raymond PA. Late-stage neuronal progenitors in the retina are radial Müller glia that function as retinal stem cells. *J Neurosci*. 2007;27(26):7028-7040.
- Ranski AH, Kramer AC, Morgan GW, Perez JL, Thummel R. Characterization of retinal regeneration in adult zebrafish following multiple rounds of phototoxic lesion. *PeerJ*. 2018;6:e5646.
- Medrano MP, Pisera Fuster A, Sanchis PA, Paez N, Bernabeu RO, Faillace MP. Characterization of proliferative, glial and angiogenic responses after a CoCl₂-induced injury of photoreceptor cells in the adult zebrafish retina. *Eur J Neurosci*. 2018;48(9):3019-3042.
- Fimbel SM, Montgomery JE, Burket CT, Hyde DR. Regeneration of inner retinal neurons after intravitreal injection of ouabain in zebrafish. *J Neurosci*. 2007;27(7):1712-1724.
- Matthey R. La greffe de l'œil : étude expérimentale de la greffe de l'œil chez le Triton (Triton cristatus). *Wilhelm Roux Arch Entwickl Mech Org*. 1927;109(3):326-341.
- Henken DB, Yoon MG. Optic nerve crush modulates proliferation of rod precursor cells in the goldfish retina. *Brain Res*. 1989;501(2):247-259.
- Keefe JR. An analysis of urodelian retinal regeneration. I. Studies of the cellular source of retinal regeneration in *Notophthalmus viridescens* utilizing 3 H-thymidine and colchicine. *J Exp Zool*. 1973;184(2):185-206.
- Senut M-C, Gulati-Leekha A, Goldman D. An element in the alpha1-tubulin promoter is necessary for retinal expression during optic nerve regeneration but not after eye injury in the adult zebrafish. *J Neurosci*. 2004;24(35):7663-7673.
- Fausett BV, Gumerson JD, Goldman D. The proneural basic helix-loop-helix gene *ascl1a* is required for retina regeneration. *J Neurosci*. 2008;28(5):1109-1117.

18. Sharma P, Gupta S, Chaudhary M, et al. Biphasic role of Tgf- β signaling during Müller glia reprogramming and retinal regeneration in zebrafish. *iScience*. 2020;23(2):100817.
19. Saito Y, Yamaguchi A, Nakamura S, Okuyoshi H, Shimazawa M, Hara H. Contribution of platelet-derived growth factor signaling to retina regeneration in zebrafish. *Neurosci Lett*. 2020;727:134930.
20. Tucker B, Klassen H, Yang L, Chen DF, Young MJ. Elevated MMP expression in the MRL mouse retina creates a permissive environment for retinal regeneration. *Invest Ophthalmol Vis Sci*. 2008;49(4):1686-1695.
21. Cebulla CM, Zelinka CP, Scott MA, et al. A chick model of retinal detachment: cone rich and novel. *PLoS One*. 2012;7(9):e44257.
22. Cameron DA, Gentile KL, Middleton FA, Yurco P. Gene expression profiles of intact and regenerating zebrafish retina. *Mol Vis*. 2005;11:775-791.
23. Stern WH, Anderson DH, Fisher SK, Borgula GA, Ericson PA. Anatomical recovery following retinal detachment: clinicopathological correlations. *Aust J Ophthalmol*. 1981;9(2):143-154.
24. Ramachandran R, Reifler A, Parent JM, Goldman D. Conditional gene expression and lineage tracing of tuba1a expressing cells during zebrafish development and retina regeneration. *J Comp Neurol*. 2010;518(20):4196-4212.
25. Bailey TJ, Hyde DR. Zebrafish: Retinal development and regeneration. In: *Encyclopedia of the eye*. Amsterdam, Netherlands: Elsevier; 2010:333-343. <https://doi.org/10.1016/B978-0-12-374203-2.00166-4>
26. Youssef PN, Sheibani N, Albert DM. Retinal light toxicity. *Eye (Lond)*. 2011;25(1):1-14.
27. Neelam K, Zhou SW, Eong KGA. The role of blue light in the pathogenesis of age-related macular degeneration. *Points de Vue*. 2014.
28. Kim GH, Kim HI, Paik S-S, Jung SW, Kang S, Kim I-B. Functional and morphological evaluation of blue light-emitting diode-induced retinal degeneration in mice. *Graefes Arch Clin Exp Ophthalmol*. 2016;254(4):705-716.
29. Cheng K-C, Hsu Y-T, Liu W, et al. The role of oxidative stress and autophagy in blue-light-induced damage to the retinal pigment epithelium in zebrafish in vitro and in vivo. *Int J Mol Sci*. 2021;22(3):1338.
30. Westerfield M. The zebrafish book: a guide for the laboratory use of zebrafish (*Brachydanio rerio*). 1995.
31. Vihtelic TS, Hyde DR. Light-induced rod and cone cell death and regeneration in the adult albino zebrafish (*Danio rerio*) retina. *J Neurobiol*. 2000;44(3):289-307.
32. Thomas JL, Nelson CM, Luo X, Hyde DR, Thummel R. Characterization of multiple light damage paradigms reveals regional differences in photoreceptor loss. *Exp Eye Res*. 2012;97(1):105-116.
33. Kassen SC, Ramanan V, Montgomery JE, et al. Time course analysis of gene expression during light-induced photoreceptor cell death and regeneration in albino zebrafish. *Dev Neurobiol*. 2007;67(8):1009-1031.
34. Eichenbaum JW, Cinaroglu A, Eichenbaum KD, Sadler KC. A zebrafish retinal graded photochemical stress model. *J Pharmacol Toxicol Methods*. 2009;59(3):121-127.
35. Lee H, Alt C, Pitsillides CM, Lin CP. Optical detection of intracellular cavitation during selective laser targeting of the retinal pigment epithelium: dependence of cell death mechanism on pulse duration. *J Biomed Opt*. 2007;12(6):064034.
36. Leszczynski D, Pitsillides CM, Pastila RK, Rox Anderson R, Lin CP. Laser-beam-triggered microcavitation: a novel method for selective cell destruction. *Radiat Res*. 2001;156(4):399-407.
37. Lund BJ, Lund DJ, Edsall PR, Gaines VD. Laser-induced retinal damage threshold for repetitive-pulse exposure to 100- μ s pulses. *J Biomed Opt*. 2014;19(10):105006.
38. Wu J, Seregard S, Algvere PV. Photochemical damage of the retina. *Surv Ophthalmol*. 2006;51(5):461-481.
39. DiCicco RM, Bell BA, Kaul C, et al. Retinal regeneration following OCT-guided laser injury in zebrafish. *Invest Ophthalmol Vis Sci*. 2014;55(10):6281-6288.
40. Lorach H, Kung J, Beier C, et al. Development of animal models of local retinal degeneration. *Invest Ophthalmol Vis Sci*. 2015;56(8):4644-4652.
41. Schwartz A, Ge L, Jc A. The sodium-potassium adenosine triphosphatase: pharmacological, physiological and biochemical aspects. 1975.
42. Maier W, Wolburg H. Regeneration of the goldfish retina after exposure to different doses of ouabain. *Cell Tissue Res*. 1979;202(1):99-118.
43. Sherpa T, Fimbel SM, Mallory DE, et al. Ganglion cell regeneration following whole-retina destruction in zebrafish. *Dev Neurobiol*. 2008;68(2):166-181.
44. Raymond PA, Reifler MJ, Rivlin PK. Regeneration of goldfish retina: rod precursors are a likely source of regenerated cells. *J Neurobiol*. 1988;19(5):431-463.
45. Caldwell LJ, Davies NO, Cavone L, et al. Regeneration of dopaminergic neurons in adult zebrafish depends on immune system activation and differs for distinct populations. *J Neurosci*. 2019;39(24):4694-4713.
46. Braisted JE, Raymond PA. Regeneration of dopaminergic neurons in goldfish retina. *Development*. 1992;114(4):913-919.
47. Maines MD, Sinclair P. Cobalt regulation of heme synthesis and degradation in avian embryo liver cell culture. *J Biol Chem*. 1977;252(1):219-223.
48. Semenza GL. HIF-1 and mechanisms of hypoxia sensing. *Curr Opin Cell Biol*. 2001;13(2):167-171.
49. Goldberg MA, Schneider TJ. Similarities between the oxygen-sensing mechanisms regulating the expression of vascular endothelial growth factor and erythropoietin. *J Biol Chem*. 1994;269(6):4355-4359.
50. Fu P, Wu Q, Hu J, Li T, Gao F. Baclofen protects primary rat retinal ganglion cells from chemical hypoxia-induced apoptosis through the Akt and PERK pathways. *Front Cell Neurosci*. 2016;10:255.
51. Li V, Wang YT. Molecular mechanisms of NMDA receptor-mediated excitotoxicity: implications for neuroprotective therapeutics for stroke. *Neural Regen Res*. 2016;11:1752.
52. Zhang C, Wang Z, Zhao J, et al. Neuroprotective effect of lutein on NMDA-induced retinal ganglion cell injury in rat retina. *Cell Mol Neurobiol*. 2016;36(4):531-540.
53. Ooto S, Akagi T, Kageyama R, et al. Potential for neural regeneration after neurotoxic injury in the adult mammalian retina. *Proc Natl Acad Sci USA*. 2004;101(37):13654-13659.
54. Yoshimatsu T, D'Orazi FD, Gamlin CR, et al. Presynaptic partner selection during retinal circuit reassembly varies with timing of neuronal regeneration in vivo. *Nat Commun*. 2016;7:10590.
55. Hagerman GF, Noel NCL, Cao SY, DuVal MG, Oel AP, Allison WT. Rapid recovery of visual function associated with blue cone ablation in zebrafish. *PLoS One*. 2016;11(11):e0166932.
56. Pisharath H. Validation of nitroreductase, a prodrug-activating enzyme, mediated cell death in embryonic zebrafish (*Danio rerio*). *Comp Med*. 2007;57(3):241-246.
57. Martinez-De Luna RI, Zuber ME. Rod-specific ablation using the nitroreductase/metronidazole system to investigate regeneration in *Xenopus*. *Cold Spring Harb Protoc*. 2018;2018(12). <https://doi.org/10.1101/pdb.prot100974>
58. Zhao X-F, Ellingsen S, Fjose A. Labelling and targeted ablation of specific bipolar cell types in the zebrafish retina. *BMC Neurosci*. 2009;10:107.
59. Montgomery JE, Parsons MJ, Hyde DR. A novel model of retinal ablation demonstrates that the extent of rod cell death regulates

- the origin of the regenerated zebrafish rod photoreceptors. *J Comp Neurol*. 2010;518(6):800-814.
60. Wu Y-C, Chang C-Y, Kao A, et al. Hypoxia-induced retinal neovascularization in zebrafish embryos: a potential model of retinopathy of prematurity. *PLoS One*. 2015;10(5):e0126750.
 61. RetNet - Retinal Information Network. <https://sph.uth.edu/retnet/>. Accessed May 2, 2020.
 62. Berger W, Kloeckener-Gruissem B, Neidhardt J. The molecular basis of human retinal and vitreoretinal diseases. *Prog Retin Eye Res*. 2010;29(5):335-375.
 63. Malek G, Busik J, Grant MB, Choudhary M. Models of retinal diseases and their applicability in drug discovery. *Expert Opin Drug Discovery*. 2018;13(4):359-377.
 64. Corey DR, Abrams JM. Morpholino antisense oligonucleotides: tools for investigating vertebrate development. *Genome Biol*. 2001;2(5):REVIEWS1015.
 65. Richardson R, Tracey-White D, Webster A, Moosajee M. The zebrafish eye—a paradigm for investigating human ocular genetics. *Eye (Lond)*. 2017;31(1):68-86.
 66. Chen S, Oikonomou G, Chiu CN, et al. A large-scale in vivo analysis reveals that TALENs are significantly more mutagenic than ZFNs generated using context-dependent assembly. *Nucleic Acids Res*. 2013;41(4):2769-2778.
 67. Campbell JM, Hartjes KA, Nelson TJ, Xu X, Ekker SC. New and TALEnted genome engineering toolbox. *Circ Res*. 2013;113(5):571-587.
 68. Jao L-E, Wente SR, Chen W. Efficient multiplex biallelic zebrafish genome editing using a CRISPR nuclease system. *Proc Natl Acad Sci USA*. 2013;110(34):13904-13909.
 69. Sanjurjo-Soriano C, Kalatzis V. Guiding lights in genome editing for inherited retinal disorders: implications for gene and cell therapy. *Neural Plast*. 2018;2018:5056279.
 70. Lebherz C, Maguire AM, Auricchio A, et al. Nonhuman primate models for diabetic ocular neovascularization using AAV2-mediated overexpression of vascular endothelial growth factor. *Diabetes*. 2005;54(4):1141-1149.
 71. Tuo J, Bojanowski CM, Zhou M, et al. Murine ccl2/cx3cr1 deficiency results in retinal lesions mimicking human age-related macular degeneration. *Invest Ophthalmol Vis Sci*. 2007;48(8):3827-3836.
 72. Veth KN, Willer JR, Collery RF, et al. Mutations in zebrafish *Irp2* result in adult-onset ocular pathogenesis that models myopia and other risk factors for glaucoma. *PLoS Genet*. 2011;7(2):e1001310.
 73. Shinozaki Y, Kashiwagi K, Namekata K, et al. Purinergic dysregulation causes hypertensive glaucoma-like optic neuropathy. *JCI Insight*. 2017;2(19):e93456.
 74. Chang B. Animal models of retinitis pigmentosa (RP). In: Chan C-C, ed. *Animal models of ophthalmic diseases. Essentials in Ophthalmology*. Cham, Switzerland: Springer International Publishing; 2016:101-116. https://doi.org/10.1007/978-3-319-19434-9_7
 75. Mowat FM, Ocellini LM, Bartoe JT, et al. Gene therapy in a large animal model of PDE6A-retinitis pigmentosa. *Front Neurosci*. 2017;11:342.
 76. Sothilingam V, Garcia Garrido M, Jiao K, et al. Retinitis pigmentosa: impact of different *Pde6a* point mutations on the disease phenotype. *Hum Mol Genet*. 2015;24(19):5486-5499.
 77. Mishra A, Das B, Nath M, et al. A novel immunodeficient NOD.SCID-rd1 mouse model of retinitis pigmentosa to investigate potential therapeutics and pathogenesis of retinal degeneration. *Biol Open*. 2017;6(4):449-462.
 78. Ropelewski P, Imanishi Y. Disrupted plasma membrane protein homeostasis in a *Xenopus laevis* model of retinitis pigmentosa. *J Neurosci*. 2019;39(28):5581-5593.
 79. Feehan JM, Chiu CN, Stanar P, Tam BM, Ahmed SN, Moritz OL. Modeling dominant and recessive forms of retinitis pigmentosa by editing three rhodopsin-encoding genes in *Xenopus laevis* using Crispr/Cas9. *Sci Rep*. 2017;7(1):6920.
 80. Riera M, Burguera D, Garcia-Fernández J, González-Duarte R. CERKL knockdown causes retinal degeneration in zebrafish. *PLoS One*. 2013;8(5):e64048.
 81. Nakao T, Tsujikawa M, Notomi S, Ikeda Y, Nishida K. The role of mislocalized phototransduction in photoreceptor cell death of retinitis pigmentosa. *PLoS One*. 2012;7(4):e32472.
 82. Dong Y, Cai X, Wu Y, Liu Y, Deng L, Chen H. Insights from genetic model systems of retinal degeneration: role of epsins in retinal angiogenesis and VEGFR2 signaling. *J Nat Sci*. 2017;3(1):e281.
 83. Chen H, Charlat O, Tartaglia LA, et al. Evidence that the diabetes gene encodes the leptin receptor: identification of a mutation in the leptin receptor gene in *db/db* mice. *Cell*. 1996;84(3):491-495.
 84. Olivares AM, Althoff K, Chen GF, et al. Animal models of diabetic retinopathy. *Curr Diab Rep*. 2017;17(10):93.
 85. van Rooijen E, Voest EE, Logister I, et al. von Hippel-Lindau tumor suppressor mutants faithfully model pathological hypoxia-driven angiogenesis and vascular retinopathies in zebrafish. *Dis Model Mech*. 2010;3(5-6):343-353.
 86. van Rooijen E, Voest EE, Logister I, et al. Zebrafish mutants in the von Hippel-Lindau tumor suppressor display a hypoxic response and recapitulate key aspects of Chuvash polycythemia. *Blood*. 2009;113(25):6449-6460.
 87. Sasase T, Morinaga H, Abe T, et al. Protein kinase C beta inhibitor prevents diabetic peripheral neuropathy, but not histopathological abnormalities of retina in Spontaneously Diabetic Torii rat. *Diabetes Obes Metab*. 2009;11(11):1084-1087.
 88. Kleinwort KJH, Amann B, Hauck SM, et al. Retinopathy with central oedema in an INS C94Y transgenic pig model of long-term diabetes. *Diabetologia*. 2017;60(8):1541-1549.
 89. Raymond PA, Barthel LK, Bernardos RL, Perkowski JJ. Molecular characterization of retinal stem cells and their niches in adult zebrafish. *BMC Dev Biol*. 2006;6:36.
 90. Lahne M, Nagashima M, Hyde DR, Hitchcock PF. Reprogramming Müller glia to regenerate retinal neurons. *Annu Rev Vis Sci*. 2020;6(1):171-193.
 91. Mensinger AF, Powers MK. Visual function in regenerating teleost retina following surgical lesioning. *Vis Neurosci*. 2007;24(3):299-307.
 92. Hamon A, Roger JE, Yang X-J, Perron M. Müller glial cell-dependent regeneration of the neural retina: an overview across vertebrate model systems. *Dev Dyn*. 2016;245(7):727-738.
 93. Hanovice NJ, Leach LL, Slater K, et al. Regeneration of the zebrafish retinal pigment epithelium after widespread genetic ablation. *PLoS Genet*. 2019;15(1):e1007939.
 94. Harris WA, Perron M. Molecular recapitulation: the growth of the vertebrate retina. *Int J Dev Biol*. 1998;42(3):299-304.
 95. Otteson DC, Hitchcock PF. Stem cells in the teleost retina: persistent neurogenesis and injury-induced regeneration. *Vision Res*. 2003;43(8):927-936.
 96. Moshiri A, Reh TA. Persistent progenitors at the retinal margin of *ptc+/-* mice. *J Neurosci*. 2004;24(1):229-237.
 97. Hamel CP, Tsilou E, Pfeffer BA, Hooks JJ, Detrick B, Redmond TM. Molecular cloning and expression of RPE65, a novel retinal pigment epithelium-specific microsomal protein that is post-transcriptionally regulated in vitro. *J Biol Chem*. 1993;268(21):15751-15757.
 98. Leach LL, Hanovice NJ, George SM, Gabriel AE, Gross JM. The immune response is a critical regulator of zebrafish retinal pigment epithelium regeneration. *BioRxiv*. 2020;118(21):e2017198118.
 99. Anthony TE, Klein C, Fishell G, Heintz N. Radial glia serve as neuronal progenitors in all regions of the central nervous system. *Neuron*. 2004;41(6):881-890.

100. Ever L, Gaiano N. Radial, "glial" progenitors: neurogenesis and signaling. *Curr Opin Neurobiol.* 2005;15(1):29-33.
101. Marquardt T, Ashery-Padan R, Andrejewski N, Scardigli R, Guillemot F, Gruss P. Pax6 is required for the multipotent state of retinal progenitor cells. *Cell.* 2001;105(1):43-55.
102. Thummel R, Enright JM, Kassen SC, Montgomery JE, Bailey TJ, Hyde DR. Pax6a and Pax6b are required at different points in neuronal progenitor cell proliferation during zebrafish photoreceptor regeneration. *Exp Eye Res.* 2010;90(5):572-582.
103. Ramachandran R, Fausett BV, Goldman D. Ascl1a regulates Müller glia dedifferentiation and retinal regeneration through a Lin28-dependent, let-7 microRNA signalling pathway. *Nat Cell Biol.* 2010;12(11):1101-1107.
104. Nelson CM, Gorsuch RA, Bailey TJ, Ackerman KM, Kassen SC, Hyde DR. Stat3 defines three populations of Müller glia and is required for initiating maximal Müller glia proliferation in the regenerating zebrafish retina. *J Comp Neurol.* 2012;520(18):4294-4311.
105. Mu Z, Zhang S, He C, et al. Expression of SoxC transcription factors during zebrafish retinal and optic nerve regeneration. *Neurosci Bull.* 2017;33(1):53-61.
106. Gorsuch RA, Lahne M, Yarka CE, Petravick ME, Li J, Hyde DR. Sox2 regulates Müller glia reprogramming and proliferation in the regenerating zebrafish retina via Lin28 and Ascl1a. *Exp Eye Res.* 2017;161:174-192.
107. Takahashi K, Tanabe K, Ohnuki M, et al. Induction of pluripotency in human somatic cells via a transient state resembling primitive streak-like mesendoderm. *Nat Commun.* 2014;5:3678.
108. Mitra S, Sharma P, Kaur S, et al. Dual regulation of lin28a by Myc is necessary during zebrafish retina regeneration. *J Cell Biol.* 2019;218(2):489-507.
109. Eastlake K, Banerjee PJ, Angbohang A, Charteris DG, Khaw PT, Limb GA. Müller glia as an important source of cytokines and inflammatory factors present in the gliotic retina during proliferative vitreoretinopathy. *Glia.* 2016;64(4):495-506.
110. Dai Y, Dai C, Sun T. Inflammatory mediators of proliferative vitreoretinopathy: hypothesis and review. *Int Ophthalmol.* 2020;40(6):1587-1601.
111. Wan J, Ramachandran R, Goldman D. HB-EGF is necessary and sufficient for Müller glia dedifferentiation and retina regeneration. *Dev Cell.* 2012;22(2):334-347.
112. Nelson CM, Ackerman KM, O'Hayer P, Bailey TJ, Gorsuch RA, Hyde DR. Tumor necrosis factor- α is produced by dying retinal neurons and is required for Müller glia proliferation during zebrafish retinal regeneration. *J Neurosci.* 2013;33(15):6524-6539.
113. Zhao X-F, Wan J, Powell C, Ramachandran R, Myers MG, Goldman D. Leptin and IL-6 family cytokines synergize to stimulate Müller glia reprogramming and retina regeneration. *Cell Rep.* 2014;9(1):272-284.
114. Conner C, Ackerman KM, Lahne M, Hobgood JS, Hyde DR. Repressing Notch signaling and expressing TNF α are sufficient to mimic retinal regeneration by inducing Müller glial proliferation to generate committed progenitor cells. *J Neurosci.* 2014;34(43):14403-14419.
115. Wan J, Zhao X-F, Vojtek A, Goldman D. Retinal injury, growth factors, and cytokines converge on β -catenin and pStat3 signaling to stimulate retina regeneration. *Cell Rep.* 2014;9(1):285-297.
116. Nagashima M, D'Cruz TS, Danku AE, et al. Midkine-a is required for cell cycle progression of Müller Glia during neuronal regeneration in the vertebrate retina. *J Neurosci.* 2020;40(6):1232-1247.
117. Ramachandran R, Zhao X-F, Goldman D. Ascl1a/Dkk/beta-catenin signaling pathway is necessary and glycogen synthase kinase-3 β inhibition is sufficient for zebrafish retina regeneration. *Proc Natl Acad Sci USA.* 2011;108(38):15858-15863.
118. Meyers JR, Hu L, Moses A, Kaboli K, Papandrea A, Raymond PA. β -catenin/Wnt signaling controls progenitor fate in the developing and regenerating zebrafish retina. *Neural Dev.* 2012;7:30.
119. Bhattacharya S, Das AV, Mallya KB, Ahmad I. Ciliary neurotrophic factor-mediated signaling regulates neuronal versus glial differentiation of retinal stem cells/progenitors by concentration-dependent recruitment of mitogen-activated protein kinase and Janus kinase-signal transducer and activator of transcription pathways in conjunction with Notch signaling. *Stem Cells.* 2008;26(10):2611-2624.
120. Thomas JL, Morgan GW, Dolinski KM, Thummel R. Characterization of the pleiotropic roles of Sonic Hedgehog during retinal regeneration in adult zebrafish. *Exp Eye Res.* 2018;166:106-115.
121. Wan J, Goldman D. Opposing actions of Fgf8a on Notch signaling distinguish two Müller glial cell populations that contribute to retina growth and regeneration. *Cell Rep.* 2017;19(4):849-862.
122. Elsaedi F, Macpherson P, Mills EA, Jui J, Flannery JG, Goldman D. Notch Suppression collaborates with Ascl1 and Lin28 to unleash a regenerative response in fish retina, but not in mice. *J Neurosci.* 2018;38(9):2246-2261.
123. Ramachandran R, Zhao X-F, Goldman D. Insm1a-mediated gene repression is essential for the formation and differentiation of Müller glia-derived progenitors in the injured retina. *Nat Cell Biol.* 2012;14(10):1013-1023.
124. Gorsuch RA, Hyde DR. Regulation of Müller glial dependent neuronal regeneration in the damaged adult zebrafish retina. *Exp Eye Res.* 2014;123:131-140.
125. Mitashov VI. Mechanisms of retina regeneration in urodeles. *Int J Dev Biol.* 1996;40(4):833-844.
126. Yoshii C, Ueda Y, Okamoto M, Araki M. Neural retinal regeneration in the anuran amphibian *Xenopus laevis* post-metamorphosis: transdifferentiation of retinal pigmented epithelium regenerates the neural retina. *Dev Biol.* 2007;303(1):45-56.
127. Ail D, Perron M. Retinal degeneration and regeneration-lessons from fishes and amphibians. *Curr Pathobiol Rep.* 2017;5(1):67-78.
128. Grigorian EN, Poplinskaia VA. Discovery of internal sources of the neural retinal regeneration after its detachment in Pleurodeles. II. The radioautography study. *Izv Akad Nauk Ser Biol.* 1999;5(5):583-591.
129. Novikova IP, Poplinskaia VA, Aleinikova KS, Grigorian EN. A study of the localization and accumulation of S-phase cells in the retina of newt *Pleurodeles waltl* after experimental pigment epithelial detachment. *Ontogenez.* 2008;39(2):143-150.
130. Langhe R, Chesneau A, Colozza G, et al. Müller glial cell reactivation in *Xenopus* models of retinal degeneration. *Glia.* 2017;65(8):1333-1349.
131. Perron M, Kanekar S, Vetter ML, Harris WA. The genetic sequence of retinal development in the ciliary margin of the *Xenopus* eye. *Dev Biol.* 1998;199(2):185-200.
132. Xue XY, Harris WA. Using myc genes to search for stem cells in the ciliary margin of the *Xenopus* retina. *Dev Neurobiol.* 2012;72(4):475-490.
133. Borday C, Cabochette P, Parain K, et al. Antagonistic cross-regulation between Wnt and Hedgehog signalling pathways controls post-embryonic retinal proliferation. *Development.* 2012;139(19):3499-3509.
134. Miyake A, Araki M. Retinal stem/progenitor cells in the ciliary marginal zone complete retinal regeneration: a study of retinal regeneration in a novel animal model. *Dev Neurobiol.* 2014;74(7):739-756.
135. Denayer T, Locker M, Borday C, et al. Canonical Wnt signaling controls proliferation of retinal stem/progenitor cells in postembryonic *Xenopus* eyes. *Stem Cells.* 2008;26(8):2063-2074.
136. Locker M, Agathocleous M, Amato MA, Parain K, Harris WA, Perron M. Hedgehog signaling and the retina: insights into the

- mechanisms controlling the proliferative properties of neural precursors. *Genes Dev.* 2006;20(21):3036-3048.
137. Araki M. Regeneration of the amphibian retina: role of tissue interaction and related signaling molecules on RPE transdifferentiation. *Dev Growth Differ.* 2007;49(2):109-120.
 138. Chiba C. The retinal pigment epithelium: an important player of retinal disorders and regeneration. *Exp Eye Res.* 2014;123:107-114.
 139. Jopling C, Boue S, Izpisua Belmonte JC. Dedifferentiation, transdifferentiation and reprogramming: three routes to regeneration. *Nat Rev Mol Cell Biol.* 2011;12(2):79-89.
 140. Islam MR, Nakamura K, Casco-Robles MM, et al. The newt reprograms mature RPE cells into a unique multipotent state for retinal regeneration. *Sci Rep.* 2014;4:6043.
 141. Yoshikawa T, Mizuno A, Yasumuro H, et al. MEK-ERK and heparin-susceptible signaling pathways are involved in cell-cycle entry of the wound edge retinal pigment epithelium cells in the adult newt. *Pigment Cell Melanoma Res.* 2012;25(1):66-82.
 142. Aladdad AM, Kador KE. Adult stem cells, tools for repairing the retina. *Curr Ophthalmol Rep.* 2019;7(1):21-29.
 143. Inami W, Islam MR, Nakamura K, et al. Expression of two classes of pax6 transcripts in reprogramming retinal pigment epithelium cells of the adult newt. *Zool Sci.* 2016;33(1):21-30.
 144. Sakaguchi DS, Janick LM, Reh TA. Basic fibroblast growth factor (FGF-2) induced transdifferentiation of retinal pigment epithelium: generation of retinal neurons and glia. *Dev Dyn.* 1997;209(4):387-398.
 145. Vergara MN, Del Rio-Tsonis K. Retinal regeneration in the *Xenopus laevis* tadpole: a new model system. *Mol Vis.* 2009;15:1000-1013.
 146. Fischer AJ, Reh TA. Identification of a proliferating marginal zone of retinal progenitors in postnatal chickens. *Dev Biol.* 2000;220(2):197-210.
 147. Fischer AJ, Reh TA. Müller glia are a potential source of neural regeneration in the postnatal chicken retina. *Nat Neurosci.* 2001;4(3):247-252.
 148. Sun G, Asami M, Ohta H, Kosaka J, Kosaka M. Retinal stem/progenitor properties of iris pigment epithelial cells. *Dev Biol.* 2006;289(1):243-252.
 149. Spence JR, Madhavan M, Ewing JD, Jones DK, Lehman BM, Del Rio-Tsonis K. The hedgehog pathway is a modulator of retina regeneration. *Development.* 2004;131(18):4607-4621.
 150. Spence JR, Aycinena J-C, Del Rio-Tsonis K. Fibroblast growth factor-hedgehog interdependence during retina regeneration. *Dev Dyn.* 2007;236(5):1161-1174.
 151. Zhu J, Luz-Madrigal A, Haynes T, Zavada J, Burke AK, Del Rio-Tsonis K. β -Catenin inactivation is a pre-requisite for chick retina regeneration. *PLoS One.* 2014;9(7):e101748.
 152. Haynes T, Gutierrez C, Aycinena JC, Tsonis PA, Del Rio-Tsonis K. BMP signaling mediates stem/progenitor cell-induced retina regeneration. *Proc Natl Acad Sci USA.* 2007;104(51):20380-20385.
 153. Luz-Madrigal A, Grajales-Esquivel E, McCorkle A, et al. Reprogramming of the chick retinal pigmented epithelium after retinal injury. *BMC Biol.* 2014;12:28.
 154. Park CM, Hollenberg MJ. Growth factor-induced retinal regeneration in vivo. *Int Rev Cytol.* 1993;146:49-74.
 155. Spence JR, Madhavan M, Aycinena J-C, Del Rio-Tsonis K. Retina regeneration in the chick embryo is not induced by spontaneous *Mitf* downregulation but requires FGF/FGFR/MEK/Erk dependent upregulation of Pax6. *Mol Vis.* 2007;13:57-65.
 156. Hayes S, Nelson BR, Buckingham B, Reh TA. Notch signaling regulates regeneration in the avian retina. *Dev Biol.* 2007;312(1):300-311.
 157. Fischer AJ, McGuire CR, Dierks BD, Reh TA. Insulin and fibroblast growth factor 2 activate a neurogenic program in Müller glia of the chicken retina. *J Neurosci.* 2002;22(21):9387-9398.
 158. Todd L, Volkov LI, Zelinka C, Squires N, Fischer AJ. Heparin-binding EGF-like growth factor (HB-EGF) stimulates the proliferation of Müller glia-derived progenitor cells in avian and murine retinas. *Mol Cell Neurosci.* 2015;69:54-64.
 159. Todd L, Palazzo I, Squires N, Mendonca N, Fischer AJ. BMP- and TGF β -signaling regulate the formation of Müller glia-derived progenitor cells in the avian retina. *Glia.* 2017;65(10):1640-1655.
 160. Ghai K, Zelinka C, Fischer AJ. Notch signaling influences neuroprotective and proliferative properties of mature Müller glia. *J Neurosci.* 2010;30(8):3101-3112.
 161. Gallina D, Zelinka C, Fischer AJ. Glucocorticoid receptors in the retina, Müller glia and the formation of Müller glia-derived progenitors. *Development.* 2014;141(17):3340-3351.
 162. Todd L, Fischer AJ. Hedgehog signaling stimulates the formation of proliferating Müller glia-derived progenitor cells in the chick retina. *Development.* 2015;142(15):2610-2622.
 163. Todd L, Squires N, Suarez L, Fischer AJ. Jak/Stat signaling regulates the proliferation and neurogenic potential of Müller glia-derived progenitor cells in the avian retina. *Sci Rep.* 2016;6:35703.
 164. Zelinka CP, Volkov L, Goodman ZA, et al. mTOR signaling is required for the formation of proliferating Müller glia-derived progenitor cells in the chick retina. *Development.* 2016;143(11):1859-1873.
 165. Todd L, Suarez L, Quinn C, Fischer AJ. Retinoic acid-signaling regulates the proliferative and neurogenic capacity of Müller glia-derived progenitor cells in the avian retina. *Stem Cells.* 2018;36(3):392-405.
 166. Martinez-Moreno CG, Epardo D, Balderas-Márquez JE, et al. Regenerative effect of growth hormone (GH) in the retina after kainic acid excitotoxic damage. *Int J Mol Sci.* 2019;20(18):4433.
 167. Tropepe V, Coles BL, Chiasson BJ, et al. Retinal stem cells in the adult mammalian eye. *Science.* 2000;287(5460):2032-2036.
 168. Coles BLK, van der Kooy D. Isolation of retinal stem cells from the mouse eye. *J Vis Exp.* 2010;(43).
 169. Kubota R, Hokoc JN, Moshiri A, McGuire C, Reh TA. A comparative study of neurogenesis in the retinal ciliary marginal zone of homeothermic vertebrates. *Brain Res Dev Brain Res.* 2002;134(1-2):31-41.
 170. Ahmad I, Tang L, Pham H. Identification of neural progenitors in the adult mammalian eye. *Biochem Biophys Res Commun.* 2000;270(2):517-521.
 171. Coles BLK, Horsford DJ, McInnes RR, van der Kooy D. Loss of retinal progenitor cells leads to an increase in the retinal stem cell population in vivo. *Eur J Neurosci.* 2006;23(1):75-82.
 172. Ahmad I, Das AV, James J, Bhattacharya S, Zhao X. Neural stem cells in the mammalian eye: types and regulation. *Semin Cell Dev Biol.* 2004;15(1):53-62.
 173. Das AV, James J, Zhao X, Rahnenführer J, Ahmad I. Identification of c-Kit receptor as a regulator of adult neural stem cells in the mammalian eye: interactions with Notch signaling. *Dev Biol.* 2004;273(1):87-105.
 174. Al-Hussaini H, Kam JH, Vugler A, Semo M, Jeffery G. Mature retinal pigment epithelium cells are retained in the cell cycle and proliferate in vivo. *Mol Vis.* 2008;14:1784-1791.
 175. Radtke ND, Aramant RB, Petry HM, Green PT, Pidwell DJ, Seiler MJ. Vision improvement in retinal degeneration patients by implantation of retina together with retinal pigment epithelium. *Am J Ophthalmol.* 2008;146(2):172-182.
 176. Stanzel BV, Liu Z, Somboonthanakij S, et al. Human RPE stem cells grown into polarized RPE monolayers on a polyester matrix are maintained after grafting into rabbit subretinal space. *Stem Cell Rep.* 2014;2(1):64-77.
 177. Madrakhimov SB, Yang JY, Park HY, Park TK. Essential role of mTOR signaling in human retinal pigment epithelial cell regeneration after laser photocoagulation. *Lasers Med Sci.* 2019;34(5):1019-1029.
 178. Royall LN, Lea D, Matsushita T, Takeda T-A, Taketani S, Araki M. A novel culture method reveals unique neural stem/progenitors in

- mature porcine iris tissues that differentiate into neuronal and rod photoreceptor-like cells. *Brain Res.* 2017;1675:51-60.
179. Dyer MA, Cepko CL. Control of Müller glial cell proliferation and activation following retinal injury. *Nat Neurosci.* 2000;3(9):873-880.
 180. Bringmann A, Iandiev I, Pannicke T, et al. Cellular signaling and factors involved in Müller cell gliosis: neuroprotective and detrimental effects. *Prog Retin Eye Res.* 2009;28(6):423-451.
 181. Pollak J, Wilken MS, Ueki Y, et al. ASCL1 reprograms mouse Müller glia into neurogenic retinal progenitors. *Development.* 2013;140(12):2619-2631.
 182. Jorstad NL, Wilken MS, Grimes WN, et al. Stimulation of functional neuronal regeneration from Müller glia in adult mice. *Nature.* 2017;548(7665):103-107.
 183. Hoang T, Wang J, Boyd P, et al. Gene regulatory networks controlling vertebrate retinal regeneration. *Science.* 2020;370(6519):eabb8598.
 184. Yang M, Yang S-L, Herrlinger S, et al. Lin28 promotes the proliferative capacity of neural progenitor cells in brain development. *Development.* 2015;142(9):1616-1627.
 185. Xia X, Teotia P, Ahmad I. Lin28a regulates neuroglialogenesis in mammalian retina through the IGF signaling. *Dev Biol.* 2018;440(2):113-128.
 186. Guimarães RPDM, Landeira BS, Coelho DM, et al. Evidence of Müller glia conversion into retina ganglion cells using neurogenin2. *Front Cell Neurosci.* 2018;12:410.
 187. Close JL, Gumuscu B, Reh TA. Retinal neurons regulate proliferation of postnatal progenitors and Müller glia in the rat retina via TGF beta signaling. *Development.* 2005;132(13):3015-3026.
 188. Kuse Y, Tsuruma K, Sugitani S, et al. Progranulin promotes the retinal precursor cell proliferation and the photoreceptor differentiation in the mouse retina. *Sci Rep.* 2016;6:23811.
 189. Wu S, Huang J, Dong J, Pan D. hippo encodes a Ste-20 family protein kinase that restricts cell proliferation and promotes apoptosis in conjunction with salvador and warts. *Cell.* 2003;114(4):445-456.
 190. Rueda EM, Hall BM, Hill MC, et al. The hippo pathway blocks mammalian retinal Müller glial cell reprogramming. *Cell Rep.* 2019;27(6):1637-1649.e6.
 191. Das AV, Mallya KB, Zhao X, et al. Neural stem cell properties of Müller glia in the mammalian retina: regulation by Notch and Wnt signaling. *Dev Biol.* 2006;299(1):283-302.
 192. Del Debbio CB, Balasubramanian S, Parameswaran S, Chaudhuri A, Qiu F, Ahmad I. Notch and Wnt signaling mediated rod photoreceptor regeneration by Müller cells in adult mammalian retina. *PLoS One.* 2010;5(8):e12425.
 193. Del Debbio CB, Mir Q, Parameswaran S, et al. Notch signaling activates stem cell properties of Müller glia through transcriptional regulation and Skp2-mediated degradation of p27Kip1. *PLoS One.* 2016;11(3):e0152025.
 194. Wan J, Zheng H, Xiao H-L, She Z-J, Zhou G-M. Sonic hedgehog promotes stem-cell potential of Müller glia in the mammalian retina. *Biochem Biophys Res Commun.* 2007;363(2):347-354.
 195. Alunni A, Bally-Cuif L. A comparative view of regenerative neurogenesis in vertebrates. *Development.* 2016;143(5):741-753.
 196. Yu H, Vu THK, Cho K-S, Guo C, Chen DF. Mobilizing endogenous stem cells for retinal repair. *Transl Res.* 2014;163(4):387-398.
 197. Tanaka EM, Ferretti P. Considering the evolution of regeneration in the central nervous system. *Nat Rev Neurosci.* 2009;10(10):713-723.

How to cite this article: Sherpa RD, Hui SP. An insight on established retinal injury mechanisms and prevalent retinal stem cell activation pathways in vertebrate models. *Anim Models Exp Med.* 2021;4:189-203. <https://doi.org/10.1002/ame2.12177>