

TECHNICAL ADVANCE

Open Access

A novel surgical management for male infertility secondary to midline prostatic cyst

Gong Cheng[†], Bianjiang Liu[†], Zhen Song, Aiming Xu, Ninghong Song and Zengjun Wang*

Abstract

Background: To summary the procedure and experience of a novel surgical management for male infertility secondary to midline prostatic cyst (MPC).

Methods: From February 2012 to February 2014, 12 patients were diagnosed with PMC by semen analysis, seminal plasma biochemical analysis, transrectal ultrasonography (TRUS), and pelvic magnetic resonance imaging (MRI). All patients underwent the transurethral unroofing of MPC using resectoscope, the dilation of ejaculatory duct, and the irrigation of seminal vesicle using seminal vesiculoscope. All patients were followed up at least 3 months after operation.

Results: Preoperative semen analyses of 12 patients showed oligoasthenozoospermia (5/12) or azoospermia (7/12), low semen volume (0–1.9 mL), and low pH level (5.5–7.0). Preoperative seminal plasma biochemical analyses showed reduced semen fructose. TURS and MRI revealed a cyst lesion located in the midline of prostatic. After 3 months follow up, the semen quality of 80% patients (4/5) with oligoasthenozoospermia improved obviously. The spermatozoa were present in the semen in 5 of 7 cases with azoospermia. In one patient, the spermatozoa occurred in the urine after ejaculation.

Conclusions: Surgical management using transurethral resectoscopy and seminal vesiculoscopy is effective, minimally invasive, and safe for male infertility secondary to MPC.

Keywords: Male infertility, Midline prostatic cyst, Transurethral resectoscopy, Seminal vesiculoscopy

Background

Male infertility affects about 8% of couples around the world [1]. Midline prostatic cyst (MPC), a rare but surgically correctable disease, is deemed to cause ejaculatory duct obstruction (EDO) which accounts for approximately 1–5% of male infertility [2]. Most MPCs are nonsymptomatic. Semen analysis, transrectal ultrasonography (TRUS) and pelvic magnetic resonance imaging (MRI) can help to diagnose MPC. For treatment, cyst puncture and simple endoscopic section are widely used. However, the efficacy is often poor. The present study shows a novel surgical management for male infertility secondary to MPC.

Methods

Approval for this study was granted by the ethics committee of Nanjing Medical University (China) and informed written consent was received from all participants.

Patients

From February 2012 to December 2013, 12 patients were recruited at Department of Urology, The First Affiliated Hospital of Nanjing Medical University. The patients were aged 18–40 years. All of them complained of infertility 2–10 years after marriage. Two cases had hematospermia. Preoperative semen analyses of 12 patients showed oligoasthenozoospermia (5/12) or azoospermia (7/12), low semen volume (0–1.9 mL), and low pH level (5.5–7.0). Preoperative seminal plasma biochemical analyses showed reduced semen fructose. TURS (Figure 1A) and MRI (Figure 1B) revealed a cyst lesion located in the midline prostate.

* Correspondence: zengjunwang@njmu.edu.cn

[†]Equal contributors

State Key Laboratory of Reproductive Medicine and Department of Urology, The First Affiliated Hospital of Nanjing Medical University, Nanjing 210029, China

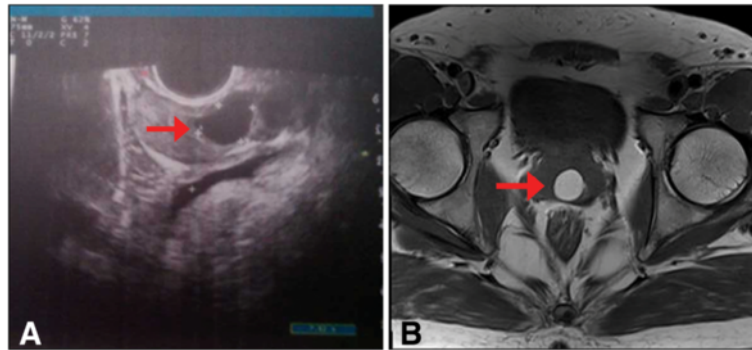


Figure 1 The representative images of MPC. **A**, TRUS; **B**, pelvic MRI. The arrow indicates the cystic lesion.

Procedures

The patients were placed under general anesthesia in the dorsal lithotomy position. Transurethral unroofing of MPC was performed using the F26 resectoscope. First, the resectoscope was inserted into prostatic urethra for preliminary visualization of the cyst (Figure 2A). Then the ridgy posterior wall of the urethra was resected for unroofing the MPC (Figure 2B and C). If the ejaculatory

duct opening was not obvious, transurethral resection of the ejaculatory duct (TURED) was performed to make the ejaculatory duct unobstructed (Figure 2D). Lastly, the dilation of ejaculatory duct and the irrigation of seminal vesicle were performed using F7 seminal vesiculoscope according to our previous report [3]. Under the guidance of a zebra guidewire, the endoscope was inserted into the ejaculatory ducts and seminal vesicles

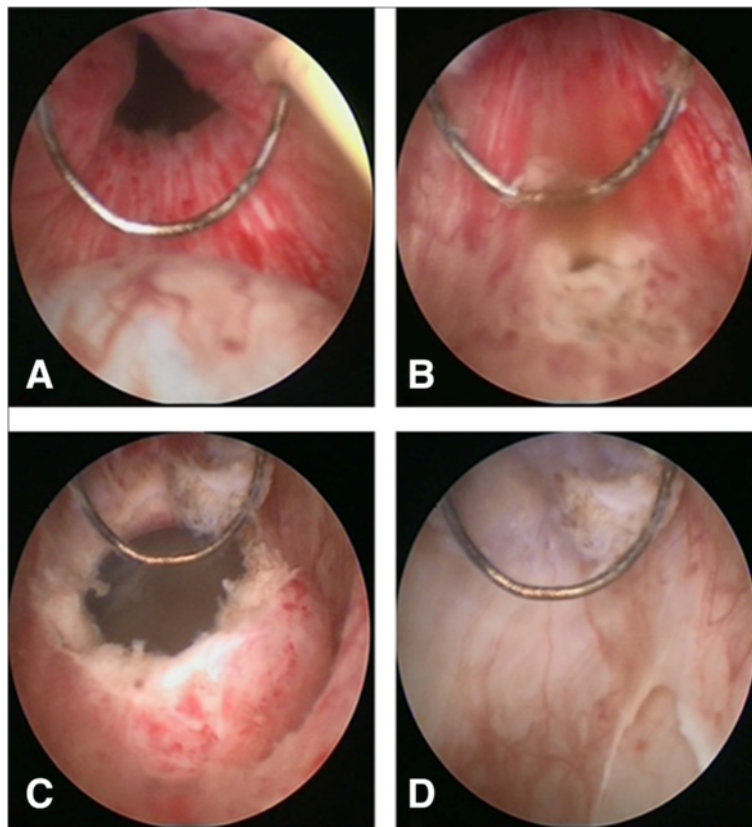


Figure 2 Transurethral unroofing of MPC. **A**, the cyst is visualized through the resectoscope. **B** and **C**, the ridgy posterior wall of the urethra is resected for unroofing the MPC. **D**, TURED is performed to make the ejaculatory duct unobstructed.

at the help of hand-controlled intermittent water perfusion dilation. The seminal vesicles usually contained the congestive wall, and milky, yellow or pink vesicle fluid filled with flocculent turbidity and dark blood clots (Figure 3A). In some cases, seminal vesicle stones were even found (Figure 3B). The seminal vesicles were irrigated using a levofloxacin solution (Figure 3C and D). After operation, a urethral Foley catheter was remained overnight. All patients were required to refrain from ejaculation at least two weeks and followed up at least 3 months.

Outcomes analysis

Preoperative and postoperative serum sex hormone levels were recorded. Preoperative and postoperative semen qualities were monitored using a computer-assisted semen analyzer (IVOS; Hamilton-Thorne, Beverly, MA, U.S.).

Results

All operations were completed without conversion to open surgery. There were no severe complications such as rectal injury and urethral sphincter damage. The average length of hospitalization was 3 days. Serum sex

hormone levels of all patients prior to and after surgery were within the normal range. The preoperative and postoperative semen parameters were shown in Table 1. After 3 months follow up, the semen quality of 80% patients (4/5) with oligoasthenozoospermia improved obviously. The spermatozoa were present in the semen in 5 of 7 cases with azoospermia. In one patient, the spermatozoa occurred in the urine after ejaculation.

Discussion

MPC is previously thought to be Mullerian duct cyst, causing EDO and male infertility through oppressing ejaculatory duct [4]. Recent researches reveal that not all cystic lesions are located in the midline prostate originate from Mullerian duct remnant. Some cases are just the cystadenoma or the simple cyst of prostate [5]. Such cyst in the midline prostate should be termed as prostatic utricular cyst or cystic dilation of prostatic utricle, depending on whether an outlet to the urethra exists.

Despite the embryologic or histological origin, MPC is a surgically correctable disease. Many MPCs are asymptomatic, or have some non-specific symptoms such as perineal pain, hematospermia, and painful ejaculation. One of the most important and serious outcomes caused

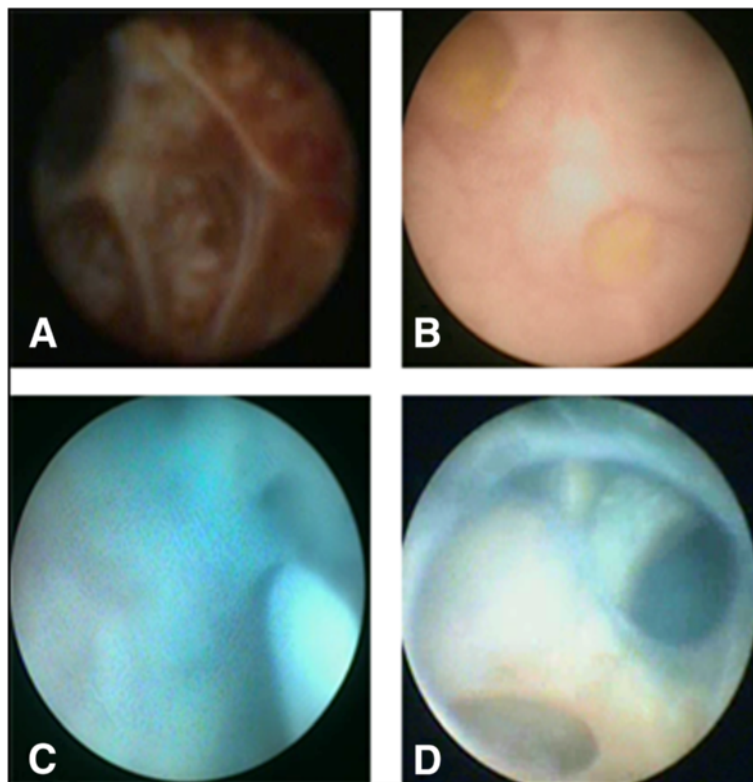


Figure 3 Transurethral irrigation of seminal vesicle. **A**, seminal vesiculitis contains the congestive wall, and milky, yellow or pink vesicle fluid filled with flocculent turbidity and dark blood clots. **B**, seminal vesicle stones. **C** and **D**, the seminal vesicle is washed clearly and irrigated using a levofloxacin solution.

Table 1 The preoperative and postoperative semen parameters of 12 cases

	Preoperative		Postoperative	
	Concentration (10 ⁶ /mL)	Grade a + b (%)	Concentration (10 ⁶ /mL)	Grade a + b (%)
Oligoasthenozoospermia 1	11	33.3	45	60.0
Oligoasthenozoospermia 2	6	12.7	21	48.5
Oligoasthenozoospermia 3	15	26.1	73	66.5
Oligoasthenozoospermia 4	2	12.3	4	11.1
Oligoasthenozoospermia 5	9	22.4	50	59.6
Azoospermia 1	0	0	21	62.3
Azoospermia 2	0	0	17	52.3
Azoospermia 3	0	0	0	0
Azoospermia 4	0	0	32	68.7
Azoospermia 5	0	0	10	45.5
Azoospermia 6*	0	0	0	0
Azoospermia 7	0	0	43	57.9

*The spermatozoa occurred in the urine after ejaculation.

by cystic lesion oppression is EDO and male infertility. Semen analysis of these patients often showed low semen volume and pH level, reduced semen fructose, oligoasthenozoospermia, and even azoospermia.

Vasoseminal vesiculography is the golden standard for diagnosis. Percutaneous testicular sperm aspiration (PTSA) is helpful to identify the type of MPC. However, these methods are invasive and complicated. TURS is preferred for simple and noninvasive characteristics. It can offer greater details about the relationship of prostatic, seminal vesicle, and ejaculatory duct [6]. Pelvic MRI not only clearly shows the anatomy of prostatic, seminal vesicle, and ejaculatory duct, but also helps to judge the nature of cyst fluid [7].

The treatment for MPC is still controversial. Some researchers claimed that treatment should only be performed on symptomatic or infertile patients since almost 60% of cases with MPC did not experience any cyst-related symptoms or fertility impairment [8]. Invasive procedures include transperineal or transrectal puncture and endoscopic section of the utricle meatu [9]. However, puncture therapy has a high recurrence rate while endoscopic incision faces persistent post-operative severe oligozoospermia or azoospermia [10]. We speculate that MPC may cause to seminal vesiculitis and further promote the abnormal semen quality through oppressing ejaculatory duct and causing semen stasis. Therefore, the dilation of ejaculatory duct and the irrigation of seminal vesicle using seminal vesiculoscope were performed after transurethral unroofing of the cyst in present study. A previous study achieved a better result for MPC with male infertility using transurethral endoscopic incision, in which a pregnancy rate was 30.8% (8/26) [10]. However, other reports showed a

poor efficacy of unroofing of the cyst [11]. The present study is delightful with a pregnancy rate of 41.7% (5/12) and an obviously improved semen quality of 75% (9/12). One patient with azoospermia had spermatozoa in the urine after ejaculation. For the two patients of poor efficacy, seminal vesicle impairment due to long term semen stasis might cause inadequate transfer of semen quality [12]. In conclusion, our data showed that the novel surgical management is effective, minimally invasive, and safe for male infertility secondary to MPC.

The followings are our endoscopic experiences. Sometimes, it is difficult to find the opening since the ejaculatory duct is oppressed by MPC or covered by inflammatory tissues [3,13]. Increasing the velocity of water perfusion and using a zebra guidewire as the guidance are helpful to find the openings. Otherwise, vas deferens puncture and injection of methylene blue, combined with the transurethral endoscope, are helpful to observe the ejaculatory duct openings. After observing the seminal vesicle lumen carefully, appropriate therapies can be implemented. Inflammatory semen can be treated with antibiotics irrigation into seminal vesicle. Stones can be removed through holmium laser lithotripsy and forceps.

Conclusions

Surgical management using transurethral resectoscopy and seminal vesiculoscopy has good clinical outcomes for improving the semen quality. It is effective, minimally invasive, and safe for male infertility secondary to MPC.

Abbreviations

MPC: Midline prostatic cyst; EDO: Ejaculatory duct obstruction; TRUS: Transrectal ultrasonography; MRI: Magnetic resonance imaging; TURED: Transurethral resection of the ejaculatory duct.

Competing interests

The authors declare that they have no competing interests.

Authors' contributions

All authors participated in the study conception, design and coordination. CG, LB, and SZ performed the surgery and wrote the paper. XA and SN performed the data analysis. WZ designed the study. All authors read and approved the final manuscript.

Acknowledgements

This work was supported by the grants from National Natural Science Foundation of China (81270685; 81200467) and by A Project Funded by the Priority Academic Program Development of Jiangsu Higher Education Institutions (JX10231801).

Received: 24 August 2014 Accepted: 5 March 2015

Published online: 14 March 2015

References

1. Goldwasser BZ, Weinerth JL, Carson 3rd CC. Ejaculatory duct obstruction: the case for aggressive diagnosis and treatment. *J Urol*. 1985;134:964–6.
2. Pryor JP, Hendry WF. Ejaculatory duct obstruction in subfertile males: analysis of 87 patients. *Fertil Steril*. 1991;56:725–30.
3. Liu B, Li J, Li P, Zhang J, Song N, Wang Z, et al. Transurethral seminal vesiculoscopy in the diagnosis and treatment of intractable seminal vesiculitis. *J Int Med Res*. 2014;42:236–42.
4. Turek PJ, Magana JO, Lipshultz LI. Semen parameters before and after transurethral surgery for ejaculatory duct obstruction. *J Urol*. 1996;155:1291–3.
5. Yasumoto R, Kawano M, Tsujino T, Shindow K, Nishisaka N, Kishimoto T. Is a cystic lesion located at the midline of the prostatic a mullerian duct cyst? Analysis of aspirated fluid and histopathological study of the cyst wall. *Eur Urol*. 1997;31:187–9.
6. Wang H, Ye H, Xu C, Liu Z, Gao X, Hou J, et al. Transurethral seminal vesiculoscopy using a 6 F vesiculoscope for ejaculatory duct obstruction: initial experience. *J Androl*. 2012;33:637–43.
7. Moukaddam HA, Haddad MC, El-Sayyed K, Wazzan W. Diagnosis and treatment of midline prostatic cysts. *Clin Imaging*. 2003;27:44–6.
8. Coppens L, Bonnet P, Andrienne R, de Leval J. Adult mullerian duct or utricule cyst: clinical significance and therapeutic management of 65 cases. *J Urol*. 2002;167:1740–4.
9. Zhou T, Chen CL, Chen K, Wang XD, Yang J. Transrectal ultrasound-guided puncture and anhydrous alcohol sclerotherapy for Mullerian duct cyst. *Zhonghua Nan Ke Xue*. 2012;18:511–3.
10. Hendry WF, Pryor JP. Mullerian duct (prostatic utricle) cyst: diagnosis and treatment in subfertile males. *Br J Urol*. 1992;69:79–82.
11. Cornel EB, Dohle GR, Meuleman EJ. Transurethral deroofting of midline prostatic cyst for subfertile men. *Hum Reprod*. 1999;14:2297–300.
12. Colpi GM, Negri L, Mariani M, Balerna M. Semen anomalies due to voiding defects of the ampullo-vesicular tract. Infertility due to ampullo-vesicular voiding defects. *Andrologia*. 1990;22 Suppl 1:206–18.
13. Han WK, Lee SR, Rha KH, Kim JH, Yang SC. Transutricular seminal vesiculoscopy in hematospermia: technical considerations and outcomes. *Urology*. 2009;73:1377–82.

Submit your next manuscript to BioMed Central and take full advantage of:

- Convenient online submission
- Thorough peer review
- No space constraints or color figure charges
- Immediate publication on acceptance
- Inclusion in PubMed, CAS, Scopus and Google Scholar
- Research which is freely available for redistribution

Submit your manuscript at
www.biomedcentral.com/submit

