

# **Supplementary Materials for**

## **Commensal Bacteria Education History Calibrate the Naivety and Activation Threshold of Adaptive Antiviral Immune System**

Baohua Li<sup>1#</sup>, Zhou Sha<sup>2#</sup>, Li Mou<sup>3#</sup>, Feng Zhang<sup>4</sup>, Haibo Wu<sup>2</sup>, Hong Wei<sup>5</sup>, Yuzhang Wu<sup>6</sup>, Lilin Ye<sup>6\*</sup>, Changjiang Liu<sup>3\*</sup>, Jian Li<sup>6\*</sup> & Yanyan Zhang<sup>7,8,9\*</sup>

<sup>1</sup>Department of Infectious Diseases, Southwest Hospital, Third Military Medical University (Army Medical University), Chongqing 400038, China.

<sup>2</sup>School of Life Sciences, Chongqing University, Chongqing 401331, China.

<sup>3</sup>NHC Key Laboratory of Birth Defects and Reproductive Health, Chongqing Population and Family Planning Science and Technology Research Institute, Chongqing, China.

<sup>4</sup>Department of Hepatobiliary Surgery, Tongren Municipal People's Hospital, 554300, Tongren, China

<sup>5</sup>Department of Animal Science and Animal Medicine, Huazhong Agricultural University, Wuhan, China.

<sup>6</sup>Institute of Immunology<sup>PLA</sup>, Third Military Medical University, Chongqing 400038, China.

<sup>7</sup>Medical research center, Chongqing General Hospital, Chongqing University, Chongqing 400044, China.

<sup>8</sup>College of Life Sciences, Chongqing College, University of Chinese Academy of Sciences, Chongqing 400714, China.

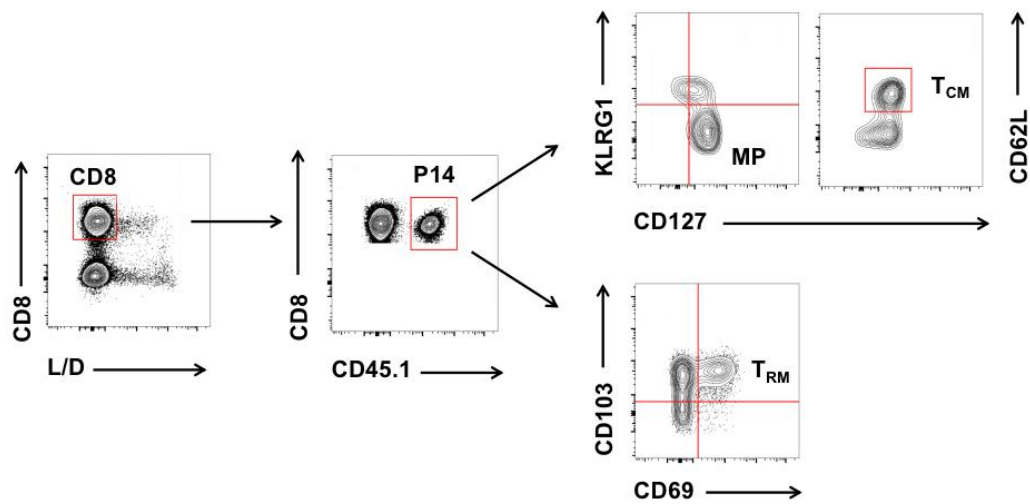
<sup>9</sup>School of Biomedical Engineering, Chongqing Medical University, Chongqing 400016, China.

**\*Correspondence:** Yanyan Zhang([yzhangtmmu@163.com](mailto:yzhangtmmu@163.com)), Jian Li([seraph-2004@163.com](mailto:seraph-2004@163.com)), Changjiang Liu([cj\\_514@163.com](mailto:cj_514@163.com)), Lilin Ye([yelilinlcmv@tmmu.edu.cn](mailto:yelilinlcmv@tmmu.edu.cn))

## Supplementary Figures

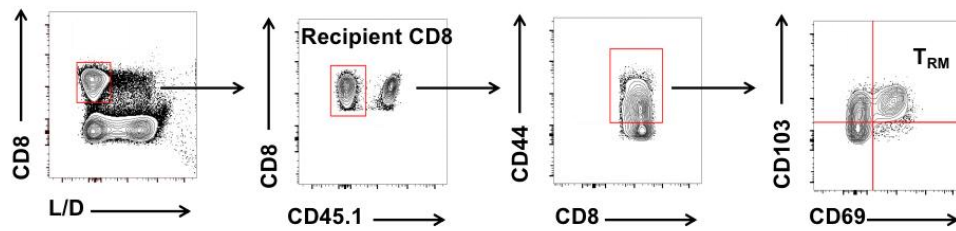
**Figure S1.** The gating strategy for memory CD8 T cells (MP), T<sub>CM</sub> and T<sub>RM</sub> of P14.

**Figure S1**



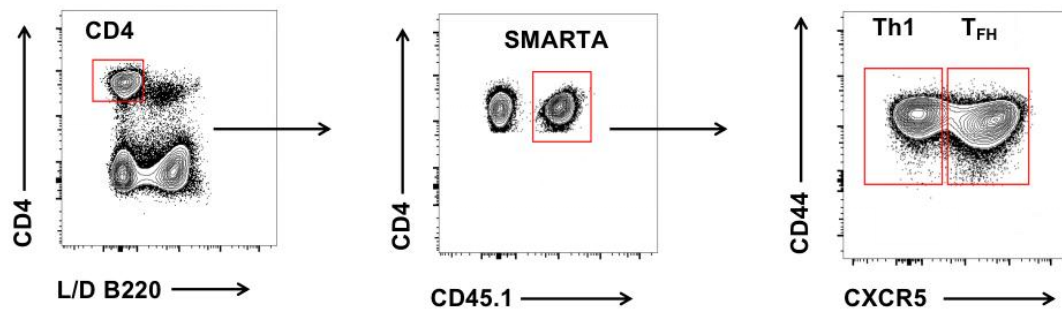
**Figure S2. The gating strategy for Trm of CD8 T cells from recipient mice.**

**Figure S2**



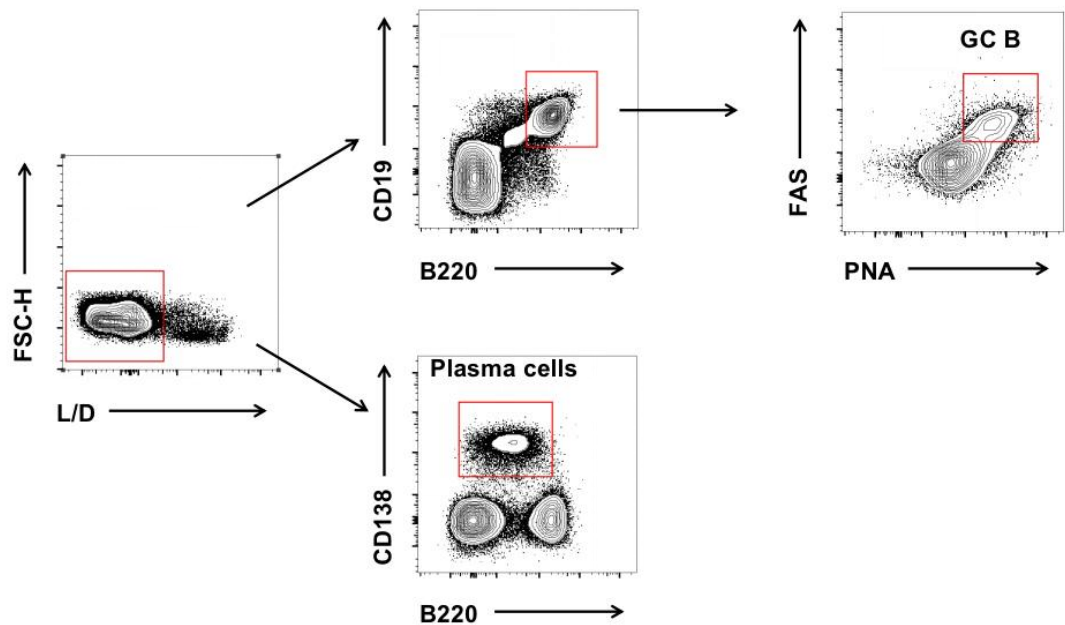
**Figure S3. The gating strategy for Tfh and Th1 cells of CD4 Smarta.**

**Figure S3**



**Figure S4.** The gating strategy for Germinal center (GC) B cells and Plasma cells.

**Figure S4**



## Supplementary Tables

**Table S1. Antibodies and reagents used in flow cytometry. Related to Figure 1-4.**

Antibody/Reagent	Cat.#	Provider
CD4	RM4-5	Biolegend
CD8	53-6.7	Biolegend
CD44	IM7	Biolegend
CD45.1	A20	Biolegend
CD90.1	OX-7	Biolegend
CD62L	MEL-14	Biolegend
CD127	A7R34	Biolegend
KLRG1	138408	Biolegend
Foxp3	FJK-16s	eBioscience
V $\alpha$ 2	B20.1	BioLegend
CD19	6D5	BioLegend
FAS	JO2	BD Biosciences
PNA	FL-1071	Vector Labs
CD138	281-2	BD Biosciences
B220	RA3-6B2	eBioscience
Streptavidin	25-4317-82	eBioscience
Live/Dead Kit	L10119	Life Technologies
Biotin Goat anti-Rat IgG	112-065-143	Jackson ImmunoResearch
anti-rabbit IgG A647	4414S	Cell Signalling Technology
Fc-blocker	2.4G2	BD Biosciences
CXCR5	2G8	BD Biosciences
IFN- $\gamma$	XMG1.2	BioLegend
CD107a	1D4B	BD Biosciences
CD107b	ABL-93	BD Biosciences
TNF- $\alpha$	MP6-XT22	BD Biosciences
Granzyme B	GB11	Invitrogen
IL-2	JES6-5H4	BioLegend