

# XePhIR: the zebrafish xenograft phenotype interactive repository

A. Groenewoud<sup>1,2,\*†</sup>, G. Forn-Cuní<sup>1,†</sup>, F. B. Engel<sup>2,3</sup> and B. E. Snaar-Jagalska<sup>1</sup>

<sup>1</sup>Institute of Biology Leiden, Animal Sciences, Leiden University, Einsteinweg 55, CC Leiden 2333, The Netherlands

<sup>2</sup>Experimental Renal and Cardiovascular Research, Department of Nephropathology, Institute of Pathology, Friedrich-Alexander-Universität Erlangen-Nürnberg (FAU), Schwabachanlage 12, Erlangen 91054, Germany

<sup>3</sup>Comprehensive Cancer Center Erlangen-EMN (CCC ER-EMN), Östliche Stadtmauerstraße 30, Erlangen 91054, Germany

\*Corresponding author: Tel: +49 9131 85436335; Email: [arwin.groenewoud@uk-erlangen.de](mailto:arwin.groenewoud@uk-erlangen.de)

†These authors contributed equally to this work.

Citation details: Groenewoud, A., Forn-Cuní, G., Engel, F.B. *et al.* XePhIR: the zebrafish xenograft phenotype interactive repository. *Database* (2022) Vol. 2022: article ID baac028; DOI: <https://doi.org/10.1093/database/baac028>

## Abstract

Zebrafish xenografts are an established model in cancer biology, with a steadily rising number of models and users. However, as of yet, there is no platform dedicated to standardizing protocols and sharing data regarding zebrafish xenograft phenotypes. Here, we present the Xenograft Phenotype Interactive Repository (XePhIR, <https://www.xephir.org>) as an independent data-sharing platform to deposit, share and repurpose zebrafish xenograft data. Deposition of data and publication with XePhIR will be done after the acceptance of the original publication. This will enhance the reach of the original research article, enhance visibility and do not interfere with the publication or copyrights of the original article. With XePhIR, we strive to fulfill these objectives and reason that this resource will enhance reproducibility and showcase the appeal and applicability of the zebrafish xenograft model.

**Database URL:** <https://www.xephir.org>

## Introduction and purpose

Since the transplantation of human metastatic melanoma cells into zebrafish blastula-stage embryos (*Danio rerio*) by Lee *et al.* in 2005 (1), the popularity of the zebrafish to model human cancer has been on a steady rise (Figure 1): scientists all over the world incorporate zebrafish as a model for cancer compound screening and utilize the zebrafish xenograft model to address basic questions in tumor biology and metastasis (2–4).

In 2016, we have published the first description of a zebrafish patient-derived xenograft (5). One of the main issues we noted since then was a general lack of conformity among different laboratories working with zebrafish xenograft models (i.e. cell types, growth medium, cancer cell processing prior to engraftment, staining of cells, injection site and time). Recently, several highly translational studies using both stable cell lines and patient-derived xenografts have further supported the overall value of the zebrafish as a cancer model (6–8). One of the main difficulties in evaluating and comparing data obtained with the zebrafish xenograft model as well as interlaboratory adoption is the lack of standardized protocols. Detailed protocols are needed due to the variable nature and needs of each cancer line, which may result in invalid engraftment phenotypes or incorrect data interpretation.

Considering the increasing interest and number of zebrafish-based studies in the cancer field and the ever-growing need for transparent and reproducible science, we have created a platform where zebrafish xenograft phenotypes can be showcased, in an open-access database. This platform will help to exchange experiences inside the zebrafish community as well as increase visibility and appreciation for this useful cancer model by wider audience. The need for a platform of this kind is also evidenced by the recent initiative by Targen *et al.* 2020, who created a zebrafish xenograft metadata repository (9). However, zebrafish research is often driven by image-based quantification analyses. Therefore, we believe that a visual data repository is a more fitting representation of the underlying data and furthers the goal of enhancing the reproducibility of zebrafish assays. We want to enable external users to quickly choose the cell lines and zebrafish models for their assay of choice, such as dissemination, orthotopic/ectopic engraftment, angiogenesis, etc. (Figure 2). Alternatively, this platform will facilitate the comparison of phenotypes, cell lines and zebrafish models between labs to enhance the overall reproducibility of zebrafish models around the world. In addition, our approach enables easy outreach to users unfamiliar with the zebrafish xenograft model.

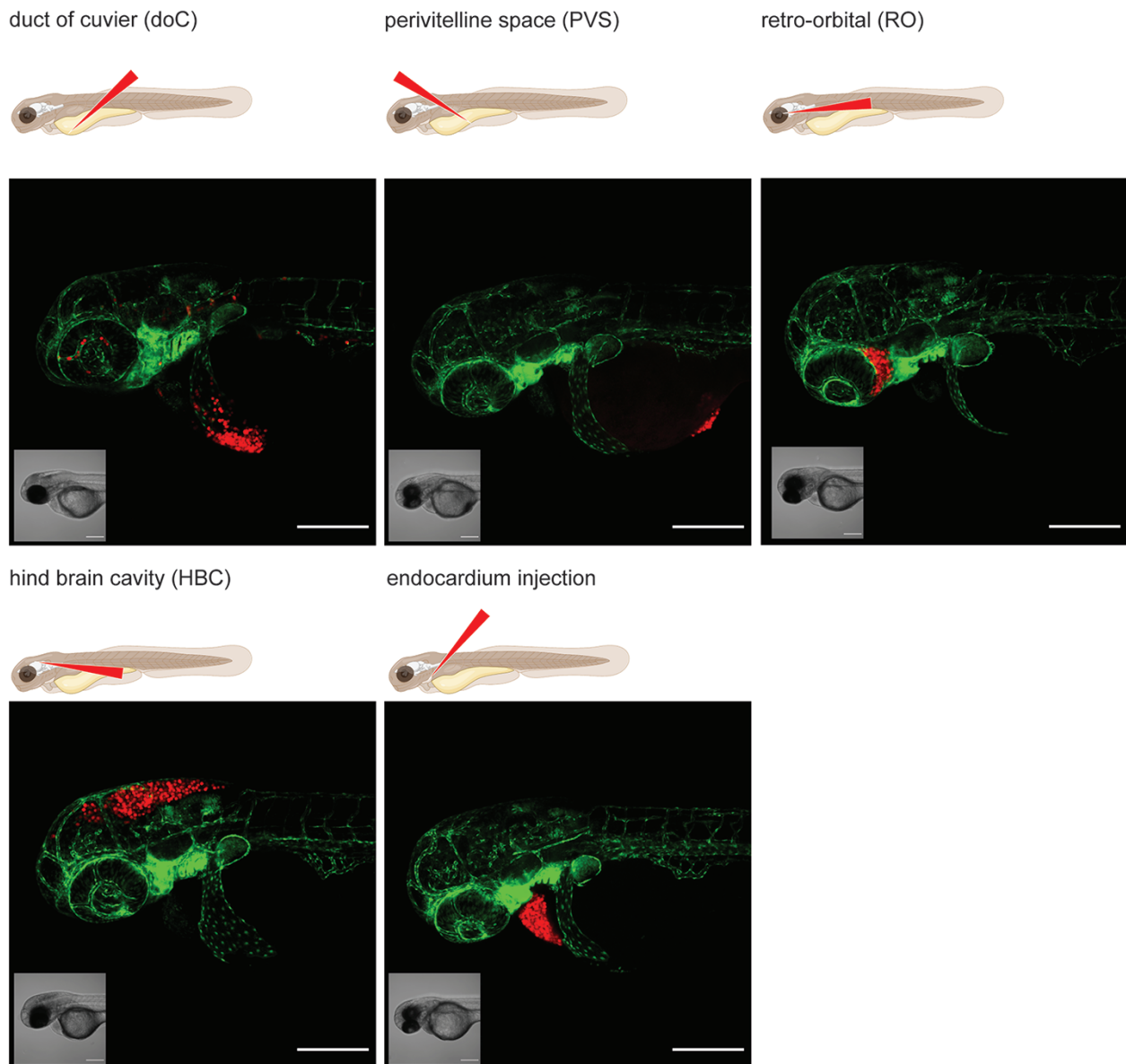
Received 4 November 2021; Revised 28 January 2022; Accepted 19 April 2022

© The Author(s) 2022. Published by Oxford University Press.

This is an Open Access article distributed under the terms of the Creative Commons Attribution-NonCommercial License

(<https://creativecommons.org/licenses/by-nc/4.0/>), which permits non-commercial re-use, distribution, and reproduction in any medium, provided the original work is properly cited. For commercial re-use, please contact [journals.permissions@oup.com](mailto:journals.permissions@oup.com)





**Figure 2.** Graphical representation of common injection sites of the zebrafish xenograft model. Injection through the duct of Cuvier, a common route of injection to generate hematogenously disseminated cancer, is also described as an experimental micrometastatic model (10, 11). Perivitelline space injection, originally described as a model for the generation and assessment of angiogenesis, more recently developed as a model for the generation of primary-like tumors (6). Retro-orbital engraftment, used for the generation of orthotopic primary-like tumors derived from eye tumors, allows for the development of distant metastases (12). Hindbrain cavity injection models are used for the generation of orthotopic brain cancer models and for the generation of brain metastasis models (13). Intra-pericardial injection, used for the establishment of primary-like tumors, in an environment closed off from further blood circulation (14, 15). All larvae were injected with ~200–300, tdTomato expressing cancer cells at 48hpf and imaged at approximately 2 h post-injection using a Zeiss LSM800 laser scanning confocal microscope with an Airyscan detector.

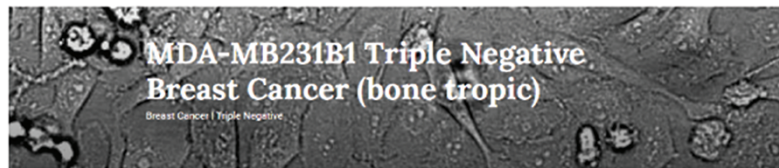
## Database contents

Since most zebrafish xenograft experiments are image-based, we have chosen a graphic driven, searchable database. Here, users can upload one or more data sets per timepoint of the performed zebrafish experiment (Fiji/bioformats compatible raw data only) (17). The option to deposit multiple images per timepoint should be used when the established phenotypes clearly segregate, for example, when a graft develops either localized or disseminated tumor growth. The visual data will be supplemented with a comprehensive set of metadata as described previously (representation of the final website user interface in Figure 3). To ensure a high quality of uploaded data, we will curate all final submissions based on proper

quality and experimental design. All permissible data will be generated using either fluorescent proteins as cell tracers or will have to be generated using transient chemical tracers (12–19). In the case of chemical tracers, these have to be preferentially followed by anti-human specific immunostaining or in a minimal case with a nuclear dye to show the presence of intact nuclei within the established tumor (18, 19).

## Standardized protocols

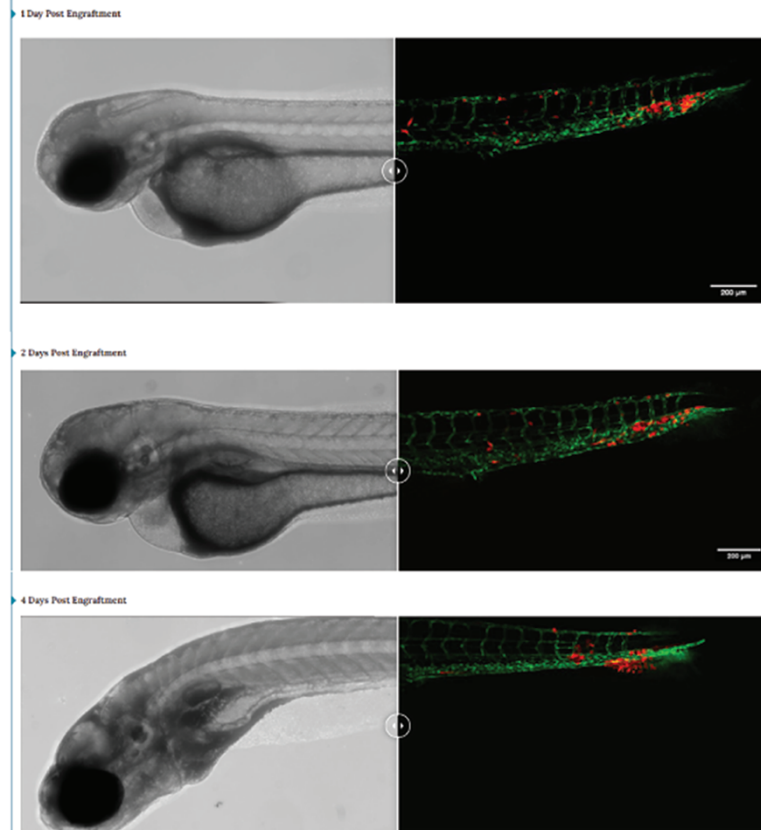
As to further enhance the ease of interpretation of protocols and to support the worldwide repeatability of zebrafish



Between 10-20% of the human breast cancers are considered Triple Negative Breast Cancer (TNBC), which means that the tumour cells do not express the receptors for estrogen, progesterone, and Her2. In practice, that means that anticancer drugs that target these receptors or hormone therapy will not be effective.

To study the dynamics and effect of possible drugs against TNBC, we engrafted the cell line [MDA-Mb231](#), one of the most commonly used breast cancer cell lines, in zebrafish larvae.

### Visual Phenotype



### Notes

Each representative image is derived from a pool of engrafted embryos (images are not from the same fish)

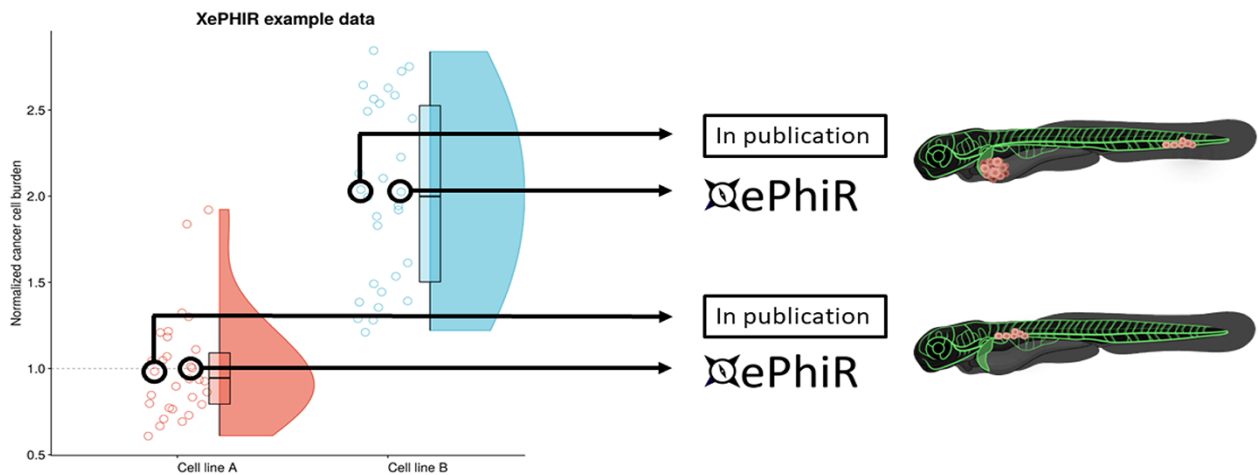
### Meta Information

Cancer Cell	Zebrafish	Phenotype	Source
Cell Line Name MDA-mb231b1	Zebrafish Transgenic Line (ZFIN ID) ZDB-TOCONSTRUCT-070117-94	Protocols used 3A) Duct of Cuvier engraftment (dCC)	Depositing Scientist Arwin Groenewoud
Collocaurus ID N/A	Injection Timepoint (hpf) 48	Injection Concentration (million cells / mL) 250	Depositing Lab Sngar Lab
Cell Growth Medium DMEM-F12	Injection Site Duct of Cuvier	Injection Amount (cells/inj) 250	Source Data DOI: 10.1016/bs.mdb.2016.10.009
Cell Confluence 75-85%		Imaging Microscope Leica M210FA	
Cell Dissociation Reagent Trypsin-EDTA			
Cell Labeling Construct ID daRED-Q418 (lentiviral)			

**Figure 3.** Triple-negative breast cancer sample data as deposited. Image-based analysis data are used to generate a graph for the original publication and are subsequently uploaded to XePHIR (either directly or indirectly). Subsequently, the available metadata is entered during submission (filling in the available data in the submission template). All metadata will be displayed next to the images that have been uploaded, when uploaded via Zenodo a DOI will be provided to allow easy access to the original data set.

xenograft experimentation, we have provided standardized engraftment protocols. These protocols are dynamic and can be adapted through drop-down menus to encompass

all conventional injection sites (duct of Cuvier, perivertebra space, retro-orbital and hindbrain cavity), carrier solutions, cell densities, cell number and time of injection (in hours



**Figure 4.** Data are derived from redundant image-based analysis. Image-based analysis data are used to generate a graph and are subsequently used for the publication of the original paper, where one representative sample individual is used in the original manuscript. Another representative individual is submitted to XePHIR either directly or indirectly through deposition of the underlying data set in Zenodo and subsequent publication of the representative image in XePHIR. Using the plotted data used for the generation of a figure in a research article allows for the selection of an adjacent, representative individual in normally distributed data.

post-fertilization, hpf). Furthermore, we will facilitate the uploading of external protocols with each submission (either direct upload or linking out to the protocol when available in an open-access publication or other freely accessible website) to further enhance reproducibility.

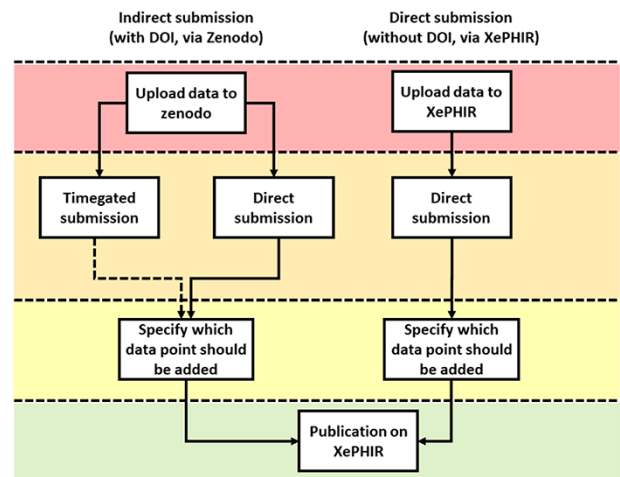
### Submission guidelines and intellectual property

Our database is open for submission and mainly functions as a graphical front end for externally stored data sets. Alternatively, single-phenotype images per timepoint can be submitted, although linking to whole data sets is preferred, in line with the enhancement of reproducibility and transparency.

Whole data sets will be deposited preferentially in external, freely available data repositories (such as Zenodo). The phenotype(s) to be displayed on XePhIR will be indicated on the submission form, along with the required metadata. Data from previously published manuscripts can be submitted, by selecting a representative image from published data sets, which have not previously been used in print (center of the distribution when plotted, comparable to the image used in the original scientific publication, Figure 5). The selected data will be uploaded to XePhIR after it has been assessed for quality (either using fluorescent proteins or a lipid tracer in conjunction with immunostaining).

The focus of XePhIR will be placed on the dissemination of already published data, to ensure that there will be no conflicts of interest between publishers and researchers. Next to the dissemination of previously published work, we will also provide a platform for unpublished data. Given that this could lead to a possible conflict of interest during later publication in a journal, this can only be done at the users' informed request. If needed, uploaded data will be time-gated prior to publication, where the items will be released to the public after the publication of the original manuscript.

Careful selection of the representative data submitted to XePhIR will ensure the nature of the phenotype depicted



**Figure 5.** Methods of data submission to XePHIR. Indirect submission through Zenodo, allowing uploading of whole data sets (after acceptance of publication) will allow for enhanced transparency and reusability of data and will provide the user with a DOI-enabling citation of the data set. Uploading to Zenodo will automatically place the data under a CC license. Direct submission to XePHIR will not provide the user with a DOI and will require the user to place the data under a CC license.

and will thus enhance global reproducibility and minimize bias when selecting cancer cell lines for future experiments (Figure 4).

As the guidelines for the ethical use of animals vary between the different countries, we will ask all depositors to sign a waiver stating that the generation of all data deposited has been generated in accordance with local animal ethical guidelines. We do not condone and take no responsibility for the unethical use of animals.

To submit data to XePhIR, data have to be placed under a selection of creative commons (CC) licenses, namely the choice between the BY non commercial, no derivatives, BY non commercial, share alike and BY share alike licenses (more information at <https://creativecommons.org>). All CC



licenses chosen disallow respective commercial use. Through CC licensing, we can facilitate the use of the deposited material for future use in, for instance, grant applications. To do so, data can be uploaded either directly to <https://www.xephir.org> or via Zenodo (20) as a whole data set, thus automatically placing it under CC license and generating a digital object identifier (DOI) allowing the referencing of the data (Figure 5).

## Conclusion

With XePhIR, we represent for the first time a visual, user-driven zebrafish xenograft database, which provides one-page summaries with the most important information of a cancer study utilizing zebrafish (Figure 5), collating all required data to reproduce the experiments, referring to the original paper. Through XePhIR, we will enhance the visibility of individual research groups and the zebrafish xenograft models they generate and use. Using a two-pronged data submission approach, we will be able to generate data for a future comparative analysis between groups, models or cell lines, further enhancing the reproducibility of zebrafish xenograft models worldwide. Data submission through Zenodo would further enhance the data reuse capacity and allows for the referencing of individual (un)published data sets using the Zenodo-generated DOI.

## Funding

European Union's Horizon 2020 research and innovation program (667787; UM Cure 2020 project, [www.umcure2020.org](http://www.umcure2020.org)) to A.G.; Wilhelm Sander-Stiftung (2019.143.1) to F.B.E.

## Conflict of interest

None declared.

## References

1. Lee, L.M.J., Seftor, E.A., Bonde, G. *et al.* (2005) The fate of human malignant melanoma cells transplanted into zebrafish embryos: assessment of migration and cell division in the absence of tumor formation. *Dev. Dyn.*, **233**, 1560–1570.
2. White, R., Rose, K. and Zon, L. (2013) Zebrafish cancer: the state of the art and the path forward. *Nat. Rev. Cancer*, **13**, 624–636.
3. White, R.M. *et al.* (2008) Transparent adult zebrafish as a tool for in vivo transplantation analysis. *Cell Stem Cell*, **2**, 183–189.
4. Fazio, M., Ablain, J., Chuan, Y. *et al.* (2020) Zebrafish patient avatars in cancer biology and precision cancer therapy. *Nat. Rev. Cancer*, **20**, 263–273.
5. Mercatali, L. *et al.* (2016) Development of a patient-derived xenograft (PDX) of breast cancer bone metastasis in a zebrafish model. *Int. J. Mol. Sci.*, **17**.
6. Fior, R. *et al.* (2017) Single-cell functional and chemosensitive profiling of combinatorial colorectal therapy in zebrafish xenografts. *Proc. Natl. Acad. Sci. U. S. A.*, **114**, E8234–E8243.
7. Chen, L. *et al.* (2020) A NF- $\kappa$ B-Activin A signaling axis enhances prostate cancer metastasis. *Oncogene*, **39**, 1634–1651.
8. Yan, C. *et al.* (2019) Visualizing engrafted human cancer and therapy responses in immunodeficient zebrafish. *Cell*, **177**, 1903–1914.
9. Targen, S. *et al.* (2020) ZenoFishDb v1.1: a database for xenotransplantation studies in Zebrafish. *Zebrafish*, **17**, 305–318.
10. Chen, L. *et al.* (2017) A zebrafish xenograft model for studying human cancer stem cells in distant metastasis and therapy response. *Methods Cell Biol.*, **138**, 471–496.
11. Tulotta, C., Groenewoud, A., Snaar-Jagalska, B.E.E. *et al.* (2019) Animal models of breast cancer bone metastasis. In: Idris AI (ed). *Bone Research Protocols. Methods in Molecular Biology*, 3rd edn, Vol. 1914. Humana Press, New York, NY, pp. 309–330.
12. Groenewoud, A., Yin, J., Snaar-Jagalska, B.E. (2021) Ortho- and ectopic zebrafish xeno-engraftment of ocular melanoma to recapitulate primary tumor and experimental metastasis development. *J. Vis. Exp.*, e62356.
13. Welker, A.M. *et al.* (2016) Standardized orthotopic xenografts in zebrafish reveal glioma cell-line-specific characteristics and tumor cell heterogeneity. *Dis. Model. Mech.*, **9**, 199–210.
14. Pekkonen, P. *et al.* (2018) Lymphatic endothelium stimulates melanoma metastasis and invasion via MMP14-dependent Notch3 and  $\beta$ 1-integrin activation. *Elife*, **7**.
15. Paatero, I., Alve, S., Gramolelli, S. *et al.* (2018) Zebrafish embryo xenograft and metastasis assay. *Bio-protocol*, **8**.
16. Paul, C.D. *et al.* (2019) Tissue architectural cues drive organ targeting of tumor cells in zebrafish. *Cell Syst*, **9**, 187–206.e16.
17. Schindelin, J. *et al.* (2012) Fiji: an open-source platform for biological-image analysis. *Nat. Methods*, **9**, 676–682.
18. Martinez-Lopez, M., Póvoa, V. and Fior, R. (2021) Generation of zebrafish larval xenografts and tumor behavior analysis. *JoVE J. Vis. Exp.*, e62373.
19. Costa, B., Estrada, M.F., Mendes, R.V. *et al.* (2020) Zebrafish avatars towards personalized medicine—a comparative review between avatar models. *Cells*, **9**, 293.
20. Zenodo. (2013) European organization for nuclear research and OpenAIRE.