

Perspectives on: Local calcium signaling

## Subcellular $\text{Ca}^{2+}$ signaling in the heart: the role of ryanodine receptor sensitivity

Benjamin L. Prosser,<sup>1</sup> Christopher W. Ward,<sup>1,2</sup> and W.J. Lederer<sup>1</sup>

<sup>1</sup>Center for Biomedical Engineering and Technology, BioMET, and <sup>2</sup>School of Nursing, University of Maryland, Baltimore, MD 21201

Local  $\text{Ca}^{2+}$  signaling in the heart enables the triggering and regulation of the time-dependent changes of intracellular  $\text{Ca}^{2+}$  concentration ( $[\text{Ca}^{2+}]_i$ ) to be flexibly modulated with a high degree of stability and safety. The elementary physiological and pathophysiological components of subcellular  $\text{Ca}^{2+}$  signaling are regulated through a process of  $\text{Ca}^{2+}$ -induced  $\text{Ca}^{2+}$  release (CICR), not by store overload-induced  $\text{Ca}^{2+}$  release (SOICR). The central element of CICR regulation is the sensitivity of the SR  $\text{Ca}^{2+}$  release channel, the RYR type 2 (RYR2), to  $[\text{Ca}^{2+}]_i$ . Here, in terms of past discoveries and future work, we discuss how RYR2 sensitivity to  $[\text{Ca}^{2+}]_i$  is influenced by key factors, including SR luminal  $\text{Ca}^{2+}$  ( $[\text{Ca}^{2+}]_{\text{SR}}$ ), RYR2 phosphorylation, mutations in RYR2 and its interacting proteins, as well as cellular stretch. Finally, we explore the pathophysiological consequences of dysfunctional tuning of these regulatory factors in the context of dystrophic cardiomyopathy.

The spatial organization of the cardiac ventricular myocyte enables precise regulation of the cardiac  $[\text{Ca}^{2+}]_i$  transient (Bers, 2001; Cheng and Lederer, 2008). The details of this regulation at the subcellular level, however, remain both controversial and exciting. There is consensus that the “global” or cell-wide  $[\text{Ca}^{2+}]_i$  signal in ventricular myocytes is central to cardiac function; it underlies contraction and contributes to the regulation of electrical activity. Despite the certainty and clarity of these contributions, the subcellular details of  $\text{Ca}^{2+}$  signaling remain unsettled. How do subcellular organelles contribute to  $\text{Ca}^{2+}$  sparks? Although it is clear that sparks originate almost exclusively at the junctional SR (jSR), many aspects of  $\text{Ca}^{2+}$  spark signaling are still being investigated. For example, do mitochondria serve as dynamic  $\text{Ca}^{2+}$  stores? What “triggers” spontaneous  $\text{Ca}^{2+}$  sparks versus synchronized sparks? How does a propagating  $\text{Ca}^{2+}$  wave arise? What sustains the propagating wave of

elevated  $[\text{Ca}^{2+}]_i$ ? Does the cardiac cytoskeleton play both organizational and dynamic roles in the regulation of  $\text{Ca}^{2+}$  sparks? How does SR  $\text{Ca}^{2+}$  instability arise, and how does it lead to the generation of cardiac arrhythmias? How can mathematical modeling contribute to such investigations? How does  $\text{Ca}^{2+}$  signaling dysfunction influence or underlie disease progression? We present here some organizing principles that should help to resolve several issues and lay the foundation for future studies.

### Spatial organization of the heart cell and the control of $\text{Ca}^{2+}$ sparks

*Subcellular anatomy: key to  $\text{Ca}^{2+}$  signaling stability.* The SR includes two primary components, the jSR and the longitudinal SR (also called the free SR or the “network” SR; see Fig. 1) (Brochet et al., 2005). In addition, the SR is connected to the ER and the nuclear  $\text{Ca}^{2+}$  store (Wu and Bers, 2006), thus making the entire  $\text{Ca}^{2+}$  storage network fully interconnected. The primary  $\text{Ca}^{2+}$  release sites are located at the jSR, an extremely small pancake-shaped sub-volume in the system (each jSR contains  $\sim 1$  attoliter,  $\sim 1 \times 10^{-18}$  l, a size  $\sim 4,000$  times smaller than a  $\text{Ca}^{2+}$  spark). On one face, the jSR contains a paracrystalline cluster of 10–300 SR  $\text{Ca}^{2+}$  release channels, the RYR2s that span 15 nm (the “subspace”) to the surface membrane (i.e., the transverse tubule [TT] or surface sarcolemmal [SL] membranes) (Franzini-Armstrong et al., 1999; Baddeley et al., 2009). The other face of the jSR points toward the M line and is tens of nanometers away from the Z-disk end of the mitochondria and is connected through the thin nanoscopic tubules that constitute the longitudinal SR. The L-type  $\text{Ca}^{2+}$  channels (or dihydropyridine receptors) are transmembrane proteins that span the SL and TT membranes facing the subspace and thus appose the jSR. The lumen of the jSR also contains the  $\text{Ca}^{2+}$ -binding protein calsequestrin type 2 (CASQ2) and other regulatory proteins, such as junctin, triadin, junctophilin, and a small amount of

Correspondence to W.J. Lederer: jlederer@umaryland.edu

Abbreviations used in this paper: AnkB, ankyrin B;  $[\text{Ca}^{2+}]_i$ , intracellular  $\text{Ca}^{2+}$ ;  $[\text{Ca}^{2+}]_{\text{SR}}$ , SR luminal  $\text{Ca}^{2+}$ ; CASQ2, calsequestrin type 2; CICR,  $\text{Ca}^{2+}$ -induced  $\text{Ca}^{2+}$  release; DMD, Duchenne muscular dystrophy; jSR, junctional SR; ROS, reactive oxygen species; RYR2, RYR type 2; SL, surface sarcolemmal; SOICR, store overload-induced  $\text{Ca}^{2+}$  release; TT, transverse tubule.

© 2010 Prosser et al. This article is distributed under the terms of an Attribution–Noncommercial–Share Alike–No Mirror Sites license for the first six months after the publication date (see <http://www.rupress.org/terms>). After six months it is available under a Creative Commons License (Attribution–Noncommercial–Share Alike 3.0 Unported license, as described at <http://creativecommons.org/licenses/by-nc-sa/3.0/>).

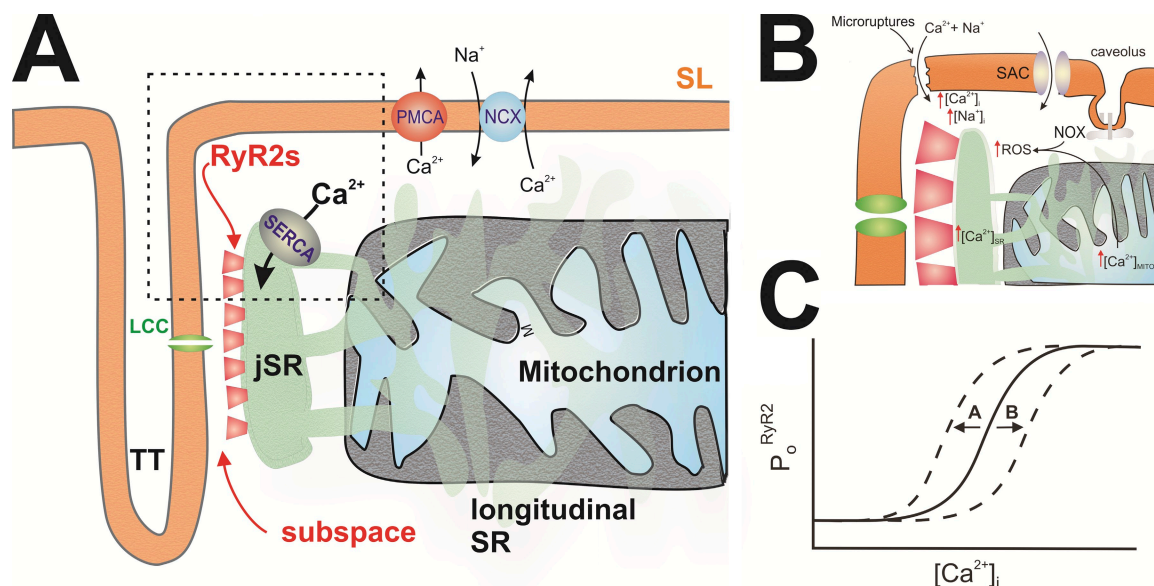
other proteins including the ER  $\text{Ca}^{2+}$ -binding and chaperone protein calreticulin (Bers, 1991; Györke et al., 2007).

The brief opening of either an L-type  $\text{Ca}^{2+}$  channel or an RYR2 under diastolic conditions leads to a local elevation of  $\text{Ca}^{2+}$  in the subspace ( $[\text{Ca}^{2+}]_{\text{subspace}}$ ) from the normal  $[\text{Ca}^{2+}]_i$  of 100 nM to  $\sim 10 \mu\text{M}$  (Cannell and Soeller, 1997; Soeller and Cannell, 1997; Sobie et al., 2002). This elevation of  $[\text{Ca}^{2+}]_{\text{subspace}}$ , albeit brief ( $< 1$  ms), is sufficient to activate the RYR2 cluster to produce a  $\text{Ca}^{2+}$  spark, a process termed  $\text{Ca}^{2+}$ -induced  $\text{Ca}^{2+}$  release, or CICR (Fabiato, 1983; Cheng et al., 1993; Cannell et al., 1994a,b; Sobie et al., 2002; Cheng and Lederer, 2008; Györke and Terentyev, 2008; Liu et al., 2010). The spatial organization of the jSR enables reliable activation of  $\text{Ca}^{2+}$  sparks by action potentials, but the relative insensitivity of RYR2s to calcium protects the cell from instability and enables  $\text{Ca}^{2+}$  sparks during diastole to remain isolated from neighboring jSR spark sites. Thus,  $\text{Ca}^{2+}$  sparks do not normally activate other  $\text{Ca}^{2+}$  sparks (Cheng et al., 1993). High gain in the signaling pathway is thus created by the spatial organization of RYR2s in a cluster, and stability is maintained by the relative insensitivity of the RYR2s to  $[\text{Ca}^{2+}]_i$  (Cheng and Lederer, 2008).

*Ca<sup>2+</sup> sparks, Ca<sup>2+</sup> blinks, and SR Ca<sup>2+</sup> leak.* The “life cycle” of a  $\text{Ca}^{2+}$  spark provides clues to its regulation. Should  $[\text{Ca}^{2+}]_{\text{subspace}}$  increase to  $\sim 10 \mu\text{M}$ , there is good probability that a  $\text{Ca}^{2+}$  spark will arise through CICR as noted above. Although  $\text{Ca}^{2+}$  spark termination is seen robustly in experiments, our understanding of how this occurs

was more challenging. Mathematical modeling of spark behavior suggests that if a significant fraction of the local jSR  $\text{Ca}^{2+}$  is depleted during the  $\text{Ca}^{2+}$  spark (between 50 and 90%), a robust termination of the spark will be seen (Sobie et al., 2002). Importantly, this occurs without the need for “inactivation” of the RYR2s, unlike in other models (Stern et al., 1999). In support of this model, there is no experimental evidence to date that suggests rapid “fateful” inactivation of RYR2s (Liu et al., 2010). The  $[\text{Ca}^{2+}]_{\text{SR}}$  depletion hypothesis regarding  $\text{Ca}^{2+}$  spark termination has been supported by the observation of  $\text{Ca}^{2+}$  “blinks” (Brochet et al., 2005). A  $\text{Ca}^{2+}$  blink is the  $[\text{Ca}^{2+}]_{\text{SR}}$  depletion signal that occurs when a  $\text{Ca}^{2+}$  spark takes place. It is the reciprocal signal of a  $\text{Ca}^{2+}$  spark; specifically,  $[\text{Ca}^{2+}]_{\text{SR}}$  depletion is seen whenever sparks occur because the  $\text{Ca}^{2+}$  flux that underlies the  $\text{Ca}^{2+}$  spark comes from the jSR lumen. SR  $\text{Ca}^{2+}$  leak is the term of art now used to describe the non-synchronized loss of  $\text{Ca}^{2+}$  from the SR, which may occur as  $\text{Ca}^{2+}$  sparks or as very small release events that may be invisible when viewed with a confocal microscope (Sobie et al., 2006). How  $\text{Ca}^{2+}$  leak may occur, and how this leak may influence  $\text{Ca}^{2+}$  instability and cardiac arrhythmogenesis, is actively under examination (Wehrens et al., 2003; Lehnart et al., 2006, 2008; Sobie et al., 2006).

*Triggering Ca<sup>2+</sup> sparks and Ca<sup>2+</sup> waves.* A  $\text{Ca}^{2+}$  spark is the local  $\text{Ca}^{2+}$  signal produced by an ensemble of RYR2s at a single jSR (Cheng and Lederer, 2008). Diastolic sparks can occur when a single RYR2 opens probabilistically



**Figure 1.** RYR2s in cardiac ventricular myocytes. (A) Diagram of heart cell illustrating the locations of the TTs and SL with respect to the L-type  $\text{Ca}^{2+}$  channels (LCC), the junctional SR (jSR), the longitudinal SR, SERCA, RYR2 cluster, subspace, the  $\text{Na}^+/\text{Ca}^{2+}$  exchanger (NCX), the plasmalemmal  $\text{Ca}^{2+}$  ATPase (PMCA), and a mitochondrion. (B) The dashed box (in A) is enlarged to reveal some of the changes that may occur in DMD. Micro-ruptures may lead to an increase in  $[\text{Ca}^{2+}]_i$  and  $[\text{Na}^+]_i$ , as may hyperactivity of stretch-activated channels (SAC); overexpression of caveoli, a putative site of NADPH oxidase, may also be involved. (C) Diagrammatic illustration how  $P_0^{\text{RYR2}}$  sensitivity to  $[\text{Ca}^{2+}]_i$  may be shifted to A (increase in sensitivity) or shifted to B (decrease in sensitivity). See Table I.

and increases  $[Ca^{2+}]_{\text{subspace}}$  to a high level (i.e.,  $\sim 10 \mu\text{M}$ ), activating the other RYR2s facing the same subspace and in the same jSR. In a similar manner, the opening of an L-type  $Ca^{2+}$  channel at near-diastolic potentials will also increase  $[Ca^{2+}]_{\text{subspace}}$  and activate a  $Ca^{2+}$  spark (Cannell et al., 1995; Cheng et al., 1996; Santana et al., 1996). More recently (Jiang et al., 2004), an alternative hypothesis has been put forward suggesting that sparks are triggered by “store overload–induced  $Ca^{2+}$  release,” or SOICR. Although we have not identified experimental evidence that supports the SOICR hypothesis and distinguishes it from CICR, there is strong evidence suggesting that  $[Ca^{2+}]_{\text{SR}}$  regulates RYR2  $[Ca^{2+}]_i$  sensitivity.  $[Ca^{2+}]_{\text{SR}}$  is certainly an integral feature of CICR because it influences the sensitivity of the RYR2 to be opened by  $[Ca^{2+}]_i$  (Györke and Györke, 1998). The influence exerted by  $[Ca^{2+}]_{\text{SR}}$  represents one factor, along with several others such as phosphorylation of the RYR2s, nitrosylation, oxidation, and channel mutations (Wehrens et al., 2003, 2004, 2005; Lehnart et al., 2004; Viatchenko-Karpinski et al., 2004; Kubalova et al., 2005; Terentyev et al., 2005, 2008, 2009; di Barletta et al., 2006; Guo et al., 2006; Györke and Terentyev, 2008), which all can increase the voltage-independent probabilistic openings of RYR2s (Table I and Fig. 1 C). The distinction between the SOICR hypothesis and the CICR hypothesis is important to make. Both support  $[Ca^{2+}]_{\text{SR}}$  influencing  $Ca^{2+}$  sparks. SOICR, however, suggests that SR  $Ca^{2+}$  overload triggers depolarization-independent  $Ca^{2+}$  sparks (Jiang et al., 2004, 2007, 2008; Jones et al., 2008), underlies  $Ca^{2+}$  waves, and is somehow distinctive from the probabilistic opening of RYR2. Just as the opening of L-type  $Ca^{2+}$  channels apposing the jSR “triggers”  $Ca^{2+}$  sparks by CICR, so does the probabilistic opening of RYR2s in

a jSR cluster. Importantly, when a spark initiates a propagating  $Ca^{2+}$  wave or contributes to the conduction of a wave, it is CICR that links the elevation of local  $[Ca^{2+}]_i$  during the spark produced by one jSR to the triggering of a  $Ca^{2+}$  spark in the next jSR. For  $Ca^{2+}$  waves to arise, it has been hypothesized that an increase in RYR2 sensitivity to  $[Ca^{2+}]_i$  occurs due to the underlying pathologies, which include SR  $Ca^{2+}$  overload and catecholaminergic polymorphic ventricular tachycardia (CPVT) mutations of RYR2 and CASQ2 (Marks et al., 2002; Eldar et al., 2003; di Barletta et al., 2006; Györke, 2009). By this means, the  $Ca^{2+}$  released by a spark diffuses and elevates the  $[Ca^{2+}]_i$  in the subspace of a neighboring RYR2 cluster and triggers a spark at that site. This chain reaction can continue to produce the arrhythmogenic  $Ca^{2+}$  wave that activates the  $Na^+/Ca^{2+}$  exchanger and produces the arrhythmogenic transient inward current,  $I_{\text{TI}}$  (Györke et al., 2007). An increase in the sensitivity of the RYR2s to  $[Ca^{2+}]_i$  is sufficient to enable this sequence. Although elevated  $[Ca^{2+}]_i$  and  $[Ca^{2+}]_{\text{SR}}$  are the simplest ways to enable this sequence, changes in RYR2 sensitivity by mutations to its primary sequence or alterations in modulatory proteins (e.g., CASQ2, calstabin2, and others) may also be sufficient. That increases in  $[Ca^{2+}]_{\text{SR}}$  may increase RYR2 opening rate is a part of CICR that has been well articulated in the literature as noted above. It would thus seem that the CICR hypothesis can fully account for the triggering of  $Ca^{2+}$  sparks and  $Ca^{2+}$  waves in health and disease.

*Mitochondrial influences on  $Ca^{2+}$  sparks and the  $[Ca^{2+}]_i$  transient.* To the extent that the mitochondria may buffer  $Ca^{2+}$  or actively take up and release  $Ca^{2+}$ , they may significantly affect  $[Ca^{2+}]_i$  dynamics (Xu et al., 2002;

TABLE I.  
Changes in the sensitivity of RYR2 to be opened by  $[Ca^{2+}]_i$

A—Increase in RYR2 sensitivity	B—Decrease in RYR2 sensitivity
Increased $[Ca^{2+}]_{\text{SR}}$ (Lukyanenko et al., 1996; Györke and Györke, 1998; Györke et al., 2002)	Decreased $[Ca^{2+}]_{\text{SR}}$ (Lukyanenko et al., 1996; Györke and Györke, 1998; Györke et al., 2002)
RYR2 phosphorylation at PKA or CaMKII sites (Valdivia et al., 1995; Li et al., 1998; Marx et al., 2000)	Calstabin2 (FKBP 12.6) binding (Marx et al., 2000; Wehrens et al., 2003)
Caffeine (Rousseau and Meissner, 1989; O’Neill and Eisner, 1990; Venetucci et al., 2007)	Tetracaine (Xu et al., 1993; Overend et al., 1997)
RYR2 oxidation (ROS) (Hidalgo et al., 2002; Terentyev et al., 2008)	Anti-oxidation (Hidalgo et al., 2002; Terentyev et al., 2008)
RYR2 CPVT mutations (Marks et al., 2002; Wehrens et al., 2003)	
Calsequestrin mutations (Postma et al., 2002; Eldar et al., 2003; di Barletta et al., 2006; Knollmann et al., 2006)	
Triadin (Valdivia et al., 1995; Li et al., 1998; Marx et al., 2000; Györke and Terentyev, 2008; Chopra et al., 2009)	
RYR2 nitrosylation (Xu et al., 1998; Sun et al., 2008; Bellinger et al., 2009)	

Dedkova and Blatter, 2008; Liu and O'Rourke, 2008; Andrienko et al., 2009; Kettlewell et al., 2009; O'Rourke and Blatter, 2009). The scale of this influence is potentially large because the mitochondria take up approximately one third of the intracellular volume of cardiac myocytes. The largest subset of cardiomyocyte mitochondria are the intermyofibrillar mitochondria that run from the jSR at one Z disk through the M-line structures to the jSR at the next Z disk. Each end of these sarcomere-spanning mitochondria experiences  $\text{Ca}^{2+}$  sparks near their source (both ends) and thus may influence the magnitude and kinetics of local  $[\text{Ca}^{2+}]_i$  at their ends and global  $[\text{Ca}^{2+}]_i$  changes in the middle. Although the potential for mitochondria to influence  $[\text{Ca}^{2+}]_i$  is enormous, their actual roles in modulating  $\text{Ca}^{2+}$  signals are debated. Experimental evidence for a substantive role (Liu and O'Rourke, 2008, 2009), as well as a minimal role (Andrienko et al., 2009; Kettlewell et al., 2009), has been put forth. Cellular and molecular tools for these investigations are limited because even the primary sequence of virtually every functional structure (channel and transporters) that may influence mitochondrial  $\text{Ca}^{2+}$  dynamics remains elusive, despite significant effort. Recently, one of the key transporters was identified, the mitochondrial  $\text{Na}^+/\text{Ca}^{2+}$  exchanger (Palty et al., 2010), which may provide a fundamental tool that is needed to jump-start the investigation and help to resolve the dynamic role that mitochondria may play in cardiac  $\text{Ca}^{2+}$  signaling.

*Cytoskeleton and  $\text{Ca}^{2+}$  sparks.* It has been long hypothesized that the beat-to-beat change in cell length may influence local cardiac  $[\text{Ca}^{2+}]_i$  signals (Allen and Blinks, 1978) and hence  $\text{Ca}^{2+}$  sparks. In keeping with this hypothesis, diverse cytoskeletal disruptions have been shown to have profound effects on  $[\text{Ca}^{2+}]_i$ . For example, mutations in the cytoskeletal adaptor protein ankyrin B (AnkB or Ank2) has been shown to affect  $[\text{Ca}^{2+}]_i$  through its actions on  $\text{Ca}^{2+}$  transporters and channels (Mohler et al., 2003; Mohler and Bennett, 2005). Consistent with this role, AnkB mutations in human and experimental animals have been shown to underlie long QT syndrome type 4 (Mohler et al., 2003). The investigation, however, suggested that it was not the disruption of a dynamic beat-to-beat regulator that caused the dysfunction. Instead, it was the role played by AnkB in the steady-state organization of the  $\text{Ca}^{2+}$  transport and signaling proteins that was the critical cause of the  $\text{Ca}^{2+}$  signaling change. Similarly, mutations or knockout of the intermediate filament protein desmin leads to a complex array of cardiac cellular dysfunctions, which may reflect the influence of this cytoskeleton element on diverse steady-state organizational elements such as the mitochondria (Weisleder et al., 2004; Maloyan et al., 2005). In contrast to these findings, recent evidence suggests that there may be a beat-to-beat mechano-transduction

pathway for which microtubules and tubulin contribute to stretch activated local  $\text{Ca}^{2+}$  signaling (see below) (Iribe et al., 2009).

#### Cellular stretch, local $\text{Ca}^{2+}$ signaling dysfunction, and muscular dystrophies

*Stretch-dependent  $\text{Ca}^{2+}$  sparks.* The recent discovery that physiological stretch increases the transient occurrence of  $\text{Ca}^{2+}$  sparks (Iribe et al., 2009) reveals an important line of inquiry that can now be investigated for the first time. These findings are important in any reexamination of normal cardiac  $\text{Ca}^{2+}$  signaling as well as in the investigation of the pathophysiology of diverse diseases that appear to be linked to cellular contraction and shortening. Iribe et al. (2009) report that a stretch of 8% of the cellular diastolic length leads to a transient increase in the  $\text{Ca}^{2+}$  spark rate, which can be blunted specifically by microtubule disruption, but not by inhibitors of L-type  $\text{Ca}^{2+}$  channel flux,  $\text{Na}^+/\text{Ca}^{2+}$  exchanger flux, stretch-activated channels, nor NO synthase. Although there was earlier evidence for spatial association of microtubules with the SR and mitochondria (Cartwright and Goldstein, 1985), no functional or contact evidence was provided. In contrast, Iribe and colleagues added to the functional connection noted above with EM tomography, demonstrating co-location of microtubules and the jSR. They thus provide strong evidence for a mechano-transduction pathway that can provide a stretch signal to the jSR. If such a signal were provided to the SR, it could affect all of the RYR2s in the jSR because they are organized in a paracrystalline array. These findings lead to the hypothesis that stretching the ventricular myocyte applies a distortion to the diastolic jSR and thereby increases the sensitivity of RYR2s in the jSR to  $[\text{Ca}^{2+}]_i$  (Iribe et al., 2009). After the stretch is a burst of  $\text{Ca}^{2+}$  sparks that relax over seconds. This is the time scale needed for cellular contraction and shortening to influence local  $\text{Ca}^{2+}$  signaling and the cardiac  $[\text{Ca}^{2+}]_i$  transient. Note too that such stretch-dependent changes in the open probability of the RYR2 should have analogous effects during all phases of cardiac  $\text{Ca}^{2+}$  signaling, including during systole. These exciting and provocative results, still in need of much further investigation, provide us with a lens through which we can view one of the key "stretch-dependent" cardiac diseases, muscular dystrophy. We suspect that there may be important connections between specific kinds of muscular dystrophy and stretch-modulated  $\text{Ca}^{2+}$  signaling because four interrelated components are involved in dystrophic cardiomyopathy: (1)  $\text{Ca}^{2+}$  entry, (2)  $\text{Ca}^{2+}$  release, (3) stretch-dependent modulation, and (4) molecular defects associated with some dystrophies.

*Duchenne muscular dystrophy (DMD).* DMD, the most common of the muscle dystrophies (1:3,500 males), is a fatal, X-linked disease characterized by progressive muscle weakness that most commonly leads to respiratory failure

(for review see Ervasti and Campbell, 1993). DMD also results in a progressive dilated cardiomyopathy, with nearly all patients exhibiting cardiac manifestations by 20 years of age. As improved treatments for skeletal muscle weakness delay respiratory failure, cardiac complications have become increasingly limiting for the survival of DMD patients (Finsterer and Stöllberger, 2000; Muntoni et al., 2003).

The genetic basis of the DMD pathology is due to a lack of expression or dysfunction of the very large (3,500 amino acids) intracellular muscle protein, dystrophin. Dystrophin associates with the transmembrane  $\beta$ -dystroglycan and other proteins to form the dystrophin–glycoprotein complex and binds to cytosolic actin (Ervasti et al., 1990; Ohlendieck et al., 1993). Similar to human patients, *mdx* animals lacking dystrophin demonstrate contractile and conductive deficits as well as cardiac dilation and fibrosis that increase with age (Quinlan et al., 2004). Several groups have recently identified local  $\text{Ca}^{2+}$  signaling abnormalities in *mdx* hearts that may underlie the pathology of dystrophic cardiomyopathy (Williams and Allen, 2007a,b; Jung et al., 2008; Ward et al., 2008; Ullrich et al., 2009).

*Dysregulated  $\text{Ca}^{2+}$  signaling in dystrophic hearts.* Dystrophic myocytes reveal elevated  $\text{Ca}^{2+}$  spark activity and the appearance of  $\text{Ca}^{2+}$  waves in response to mechanical stress (Yasuda et al., 2005; Jung et al., 2008; Fanchaouy et al., 2009). Of note, among the compensatory adaptations in the *mdx* heart is an  $\sim 1.4$ -fold increase in  $\beta$ -tubulin (Wilding et al., 2005). Based on this cytoskeletal adaptation in conjunction with the findings of Iribe et al. (2009), it is attractive to ascribe altered mechano-transduction (via microtubules) to aberrant  $\text{Ca}^{2+}$  signals in the DMD heart. In support of this notion, Prins et al. (2009) have discussed dystrophin as a giant “cytolinker” protein, one that stabilizes structures through the ability to link to actin filaments as well as to microtubules.

Work by Yasuda et al. (2005) suggests that the stretch-induced aberrant  $\text{Ca}^{2+}$  signals in *mdx* myocytes depends on  $\text{Ca}^{2+}$  (and possibly  $\text{Na}^{+}$ ) entry. Use of the surfactant and putative “membrane sealant” poloxamer 188 (with support from experiments with the extracellular dye FM-143) has led to the hypothesis that “micro-ruptures” in the SL membrane may underlie  $\text{Ca}^{2+}$  entry in stressed *mdx* myocytes (Yasuda et al., 2005; Fanchaouy et al., 2009). Other reports have linked stretch-activated channels to enhanced  $\text{Ca}^{2+}$  influx in the dystrophic heart (Williams and Allen, 2007a). These channels have been shown to be overexpressed in the DMD heart, and their inhibition blunts the aberrant local  $\text{Ca}^{2+}$  activity associated with stress (Fanchaouy et al., 2009).

Other mechanisms have been reported that could indirectly affect mechano-transduction pathways of altered SR  $\text{Ca}^{2+}$  release. The dystrophic heart produces more reactive oxygen species (ROS) (Williams and Allen, 2007b), and *mdx* myocytes exhibit aggravated ROS production

in response to osmotic shock (Jung et al., 2008; Fanchaouy et al., 2009), a commonly used, albeit non-physiological form of mechanical stress. Mechanistically, oxidation sensitizes RYRs to  $\text{Ca}^{2+}$  (Pessah et al., 2002), making excessive ROS production and RYR2 sensitization an appealing explanation for a greater degree of  $\text{Ca}^{2+}$  instability in the DMD heart. Supporting this hypothesis is the apparent ability of ROS scavengers to protect *mdx* cells from the  $\text{Ca}^{2+}$  signaling consequences of mechanical stress (Jung et al., 2008; Ullrich et al., 2009) and the up-regulation of NADPH oxidase in the DMD heart (Williams and Allen, 2007b). Furthermore, several additional pathways have been linked to dystrophic changes in skeletal muscle, such as RYR nitrosylation and RYR hyperphosphorylation (Bellinger et al., 2009). These pathways could also serve to increase the sensitivity of RYR2 in the DMD heart to  $[\text{Ca}^{2+}]_i$ . If so, this could result in an increase in the mechano-transduction-induced gain of CICR. Clearly, these provocative hypotheses must be tested experimentally.

## Conclusions

The regulation of local  $\text{Ca}^{2+}$  signaling is critically dependent on the sensitivity of RYR2 to  $[\text{Ca}^{2+}]_i$  and the subcellular anatomy of the heart cell. Physiological and pathophysiological changes in local cardiac  $\text{Ca}^{2+}$  signaling may depend on altered sensitivity of the RYR2s to  $[\text{Ca}^{2+}]_i$ . These critical signaling changes arise from many factors that influence the open probability of RYR2, including  $[\text{Ca}^{2+}]_{\text{SR}}$ , mutations of RYR2 itself, mutations of RYR2-linked proteins, RYR2 protein phosphorylation and nitrosylation, and other molecular and cellular features. Recently, cellular stretch and the activation of mechano-transduction pathways have been shown to contribute to this process. Quantitative molecular and biophysical investigations of the processes that regulate RYR2 behavior are needed to further elucidate cardiac  $\text{Ca}^{2+}$  signaling in health and disease.

This Perspectives series includes articles by [Gordon](#), [Parker and Smith](#), [Xie et al.](#), [Santana and Navedo](#), and [Hill-Eubanks et al.](#)

We would like to acknowledge support from National Heart, Lung and Blood Institute (grants P01 HL67849 and R01-HL36974); National Institutes of Health (grant RC2 NR011968); Leducq North American-European Atrial Fibrillation Research Alliance; European Union Seventh Framework Program (FP7) “Identification and therapeutic targeting of common arrhythmia trigger mechanisms”; and support from the Maryland Stem Cell Commission.

## REFERENCES

- Allen, D.G., and J.R. Blinks. 1978. Calcium transients in aequorin-injected frog cardiac muscle. *Nature*. 273:509–513. doi:10.1038/273509a0
- Andrienko, T.N., E. Picht, and D.M. Bers. 2009. Mitochondrial free calcium regulation during sarcoplasmic reticulum calcium release in rat cardiac myocytes. *J. Mol. Cell. Cardiol.* 46:1027–1036. doi:10.1016/j.jmcc.2009.03.015

- Baddeley, D., I.D. Jayasinghe, L. Lam, S. Rossberger, M.B. Cannell, and C. Soeller. 2009. Optical single-channel resolution imaging of the ryanodine receptor distribution in rat cardiac myocytes. *Proc. Natl. Acad. Sci. USA*. 106:22275–22280. doi:10.1073/pnas.09089711106
- Bellinger, A.M., S. Reiken, C. Carlson, M. Mongillo, X. Liu, L. Rothman, S. Matecki, A. Lacampagne, and A.R. Marks. 2009. Hypernitrosylated ryanodine receptor calcium release channels are leaky in dystrophic muscle. *Nat. Med.* 15:325–330. doi:10.1038/nm.1916
- Bers, D.M. 1991. Excitation-Contraction Coupling and Cardiac Contractile Force. Kluwer Academic Publishers, Boston. 288 pp.
- Bers, D.M. 2001. Excitation-Contraction Coupling and Cardiac Contractile Force. Kluwer Academic Publishers, Boston. 452 pp.
- Brochet, D.X., H. Yang, A. Di Maio, W.J. Lederer, C. Franzini-Armstrong, and H. Cheng. 2005. Ca<sup>2+</sup> blinks: rapid nanoscopic store calcium signaling. *Proc. Natl. Acad. Sci. USA*. 102:3099–3104. doi:10.1073/pnas.0500059102
- Cannell, M.B., and C. Soeller. 1997. Numerical analysis of ryanodine receptor activation by L-type channel activity in the cardiac muscle diad. *Biophys. J.* 73:112–122. doi:10.1016/S0006-3495(97)78052-4
- Cannell, M.B., H. Cheng, and W.J. Lederer. 1994a. Nifedipine decreases the spatial uniformity of the depolarization-evoked Ca<sup>2+</sup> transient in isolated rat cardiac myocytes. *J. Physiol.* 477:25P.
- Cannell, M.B., H. Cheng, and W.J. Lederer. 1994b. Spatial non-uniformities in [Ca<sup>2+</sup>]<sub>i</sub> during excitation-contraction coupling in cardiac myocytes. *Biophys. J.* 67:1942–1956. doi:10.1016/S0006-3495(94)80677-0
- Cannell, M.B., H. Cheng, and W.J. Lederer. 1995. The control of calcium release in heart muscle. *Science*. 268:1045–1049. doi:10.1126/science.7754384
- Cartwright, J., Jr., and M.A. Goldstein. 1985. Microtubules in the heart muscle of the postnatal and adult rat. *J. Mol. Cell. Cardiol.* 17:1–7. doi:10.1016/S0022-2828(85)80087-0
- Cheng, H., and W.J. Lederer. 2008. Calcium sparks. *Physiol. Rev.* 88:1491–1545. doi:10.1152/physrev.00030.2007
- Cheng, H., W.J. Lederer, and M.B. Cannell. 1993. Calcium sparks: elementary events underlying excitation-contraction coupling in heart muscle. *Science*. 262:740–744. doi:10.1126/science.8235594
- Cheng, H., M.R. Lederer, W.J. Lederer, and M.B. Cannell. 1996. Calcium sparks and [Ca<sup>2+</sup>]<sub>i</sub> waves in cardiac myocytes. *Am. J. Physiol.* 270:C148–C159.
- Chopra, N., T. Yang, P. Asghari, E.D. Moore, S. Huke, B. Akin, R.A. Cattoica, C.F. Perez, T. Hlaing, B.E. Knollmann-Ritschel, et al. 2009. Ablation of triadin causes loss of cardiac Ca<sup>2+</sup> release units, impaired excitation-contraction coupling, and cardiac arrhythmias. *Proc. Natl. Acad. Sci. USA*. 106:7636–7641. doi:10.1073/pnas.0902919106
- Dedkova, E.N., and L.A. Blatter. 2008. Mitochondrial Ca(2+) and the heart. *Cell Calcium*. 44:77–91.
- di Barletta, M.R., S. Viatchenko-Karpinski, A. Nori, M. Memmi, D. Terentyev, F. Turcato, G. Valle, N. Rizzi, C. Napolitano, S. Gyorke, et al. 2006. Clinical phenotype and functional characterization of CASQ2 mutations associated with catecholaminergic polymorphic ventricular tachycardia. *Circulation*. 114:1012–1019. doi:10.1161/CIRCULATIONAHA.106.623793
- Eldar, M., E. Pras, and H. Lahat. 2003. A missense mutation in the CASQ2 gene is associated with autosomal-recessive catecholamine-induced polymorphic ventricular tachycardia. *Trends Cardiovasc. Med.* 13:148–151. doi:10.1016/S1050-1738(03)00025-2
- Ervasti, J.M., and K.P. Campbell. 1993. Dystrophin and the membrane skeleton. *Curr. Opin. Cell Biol.* 5:82–87. doi:10.1016/S0955-0674(05)80012-2
- Ervasti, J.M., K. Ohlendieck, S.D. Kahl, M.G. Gaver, and K.P. Campbell. 1990. Deficiency of a glycoprotein component of the dystrophin complex in dystrophic muscle. *Nature*. 345:315–319. doi:10.1038/345315a0
- Fabiato, A. 1983. Calcium-induced release of calcium from the cardiac sarcoplasmic reticulum. *Am. J. Physiol.* 245:C1–C14.
- Fanchaouy, M., E. Polakova, C. Jung, J. Ogrodnik, N. Shirokova, and E. Niggli. 2009. Pathways of abnormal stress-induced Ca<sup>2+</sup> influx into dystrophic mdx cardiomyocytes. *Cell Calcium*. 46:114–121. doi:10.1016/j.ceca.2009.06.002
- Finsterer, J., and C. Stöllberger. 2000. Cardiac involvement in primary myopathies. *Cardiology*. 94:1–11. doi:10.1159/00007039
- Franzini-Armstrong, C., F. Protasi, and V. Ramesh. 1999. Shape, size, and distribution of Ca(2+) release units and couplons in skeletal and cardiac muscles. *Biophys. J.* 77:1528–1539. doi:10.1016/S0006-3495(99)77000-1
- Guo, T., T. Zhang, R. Mestril, and D.M. Bers. 2006. Ca<sup>2+</sup>/calmodulin-dependent protein kinase II phosphorylation of ryanodine receptor does affect calcium sparks in mouse ventricular myocytes. *Circ. Res.* 99:398–406. doi:10.1161/01.RES.0000236756.06252.13
- Györke, I., and S. Györke. 1998. Regulation of the cardiac ryanodine receptor channel by luminal Ca<sup>2+</sup> involves luminal Ca<sup>2+</sup> sensing sites. *Biophys. J.* 75:2801–2810. doi:10.1016/S0006-3495(98)77723-9
- Györke, S. 2009. Molecular basis of catecholaminergic polymorphic ventricular tachycardia. *Heart Rhythm*. 6:123–129. doi:10.1016/j.hrthm.2008.09.013
- Györke, S., and D. Terentyev. 2008. Modulation of ryanodine receptor by luminal calcium and accessory proteins in health and cardiac disease. *Cardiovasc. Res.* 77:245–255. doi:10.1093/cvr/cvm038
- Györke, S., I. Györke, V. Lukyanenko, D. Terentyev, S. Viatchenko-Karpinski, and T.F. Wiesner. 2002. Regulation of sarcoplasmic reticulum calcium release by luminal calcium in cardiac muscle. *Front. Biosci.* 7:d1454–d1463. doi:10.2741/gyorke
- Györke, S., B.M. Hagen, D. Terentyev, and W.J. Lederer. 2007. Chain-reaction Ca<sup>2+</sup> signaling in the heart. *J. Clin. Invest.* 117:1758–1762.
- Hidalgo, C., P. Aracena, G. Sanchez, and P. Donoso. 2002. Redox regulation of calcium release in skeletal and cardiac muscle. *Biol. Res.* 35:183–193. doi:10.4067/S0716-97602002000200009
- Iribe, G., C.W. Ward, P. Camelliti, C. Bollensdorff, F. Mason, R.A. Burton, A. Garny, M.K. Morphew, A. Hoenger, W.J. Lederer, and P. Kohl. 2009. Axial stretch of rat single ventricular cardiomyocytes causes an acute and transient increase in Ca<sup>2+</sup> spark rate. *Circ. Res.* 104:787–795. doi:10.1161/CIRCRESAHA.108.193334
- Jiang, D., B. Xiao, D. Yang, R. Wang, P. Choi, L. Zhang, H. Cheng, and S.R. Chen. 2004. RyR2 mutations linked to ventricular tachycardia and sudden death reduce the threshold for store-overload-induced Ca<sup>2+</sup> release (SOICR). *Proc. Natl. Acad. Sci. USA*. 101:13062–13067. doi:10.1073/pnas.0402388101
- Jiang, D., W. Chen, R. Wang, L. Zhang, and S.R. Chen. 2007. Loss of luminal Ca<sup>2+</sup> activation in the cardiac ryanodine receptor is associated with ventricular fibrillation and sudden death. *Proc. Natl. Acad. Sci. USA*. 104:18309–18314. doi:10.1073/pnas.0706573104
- Jiang, D., W. Chen, J. Xiao, R. Wang, H. Kong, P.P. Jones, L. Zhang, B. Fruen, and S.R. Chen. 2008. Reduced threshold for luminal Ca<sup>2+</sup> activation of RyR1 underlies a causal mechanism of porcine malignant hyperthermia. *J. Biol. Chem.* 283:20813–20820. doi:10.1074/jbc.M801944200
- Jones, P.P., D. Jiang, J. Bolstad, D.J. Hunt, L. Zhang, N. Demareux, and S.R. Chen. 2008. Endoplasmic reticulum Ca<sup>2+</sup> measurements reveal that the cardiac ryanodine receptor mutations linked to cardiac arrhythmia and sudden death alter the threshold for store-overload-induced Ca<sup>2+</sup> release. *Biochem. J.* 412:171–178. doi:10.1042/BJ20071287
- Jung, C., A.S. Martins, E. Niggli, and N. Shirokova. 2008. Dystrophic cardiomyopathy: amplification of cellular damage by Ca<sup>2+</sup> signalling and reactive oxygen species-generating pathways. *Cardiovasc. Res.* 77:766–773. doi:10.1093/cvr/cvm089

- Kettlewell, S., P. Cabrero, S.A. Nicklin, J.A. Dow, S. Davies, and G.L. Smith. 2009. Changes of intra-mitochondrial Ca<sup>2+</sup> in adult ventricular cardiomyocytes examined using a novel fluorescent Ca<sup>2+</sup> indicator targeted to mitochondria. *J. Mol. Cell. Cardiol.* 46:891–901. doi:10.1016/j.yjmcc.2009.02.016
- Knollmann, B.C., N. Chopra, T. Hlaing, B. Akin, T. Yang, K. Etensohn, B.E. Knollmann, K.D. Horton, N.J. Weissman, I. Holinstat, et al. 2006. Casq2 deletion causes sarcoplasmic reticulum volume increase, premature Ca<sup>2+</sup> release, and catecholaminergic polymorphic ventricular tachycardia. *J. Clin. Invest.* 116:2510–2520.
- Kubalova, Z., D. Terentyev, S. Viatchenko-Karpinski, Y. Nishijima, I. Györke, R. Terentyeva, D.N. da Cunha, A. Sridhar, D.S. Feldman, R.L. Hamlin, et al. 2005. Abnormal intrastore calcium signaling in chronic heart failure. *Proc. Natl. Acad. Sci. USA.* 102:14104–14109. doi:10.1073/pnas.0504298102
- Lehnart, S.E., X.H. Wehrens, P.J. Laitinen, S.R. Reiken, S.X. Deng, Z. Cheng, D.W. Landry, K. Kontula, H. Swan, and A.R. Marks. 2004. Sudden death in familial polymorphic ventricular tachycardia associated with calcium release channel (ryanodine receptor) leak. *Circulation.* 109:3208–3214. doi:10.1161/01.CIR.0000132472.98675.EC
- Lehnart, S.E., C. Terrenoire, S. Reiken, X.H. Wehrens, L.S. Song, E.J. Tillman, S. Mancarella, J. Coromilas, W.J. Lederer, R.S. Kass, and A.R. Marks. 2006. Stabilization of cardiac ryanodine receptor prevents intracellular calcium leak and arrhythmias. *Proc. Natl. Acad. Sci. USA.* 103:7906–7910. doi:10.1073/pnas.0602133103
- Lehnart, S.E., M. Mongillo, A. Bellinger, N. Lindegger, B.X. Chen, W. Hsueh, S. Reiken, A. Wronska, L.J. Drew, C.W. Ward, et al. 2008. Leaky Ca<sup>2+</sup> release channel/ryanodine receptor 2 causes seizures and sudden cardiac death in mice. *J. Clin. Invest.* 118:2230–2245.
- Li, L., G. Chu, E.G. Kranias, and D.M. Bers. 1998. Cardiac myocyte calcium transport in phospholamban knockout mouse: relaxation and endogenous CaMKII effects. *Am. J. Physiol.* 274: H1335–H1347.
- Liu, T., and B. O'Rourke. 2008. Enhancing mitochondrial Ca<sup>2+</sup> uptake in myocytes from failing hearts restores energy supply and demand matching. *Circ. Res.* 103:279–288. doi:10.1161/CIRCRESAHA.108.175919
- Liu, T., and B. O'Rourke. 2009. Regulation of mitochondrial Ca<sup>2+</sup> and its effects on energetics and redox balance in normal and failing heart. *J. Bioenerg. Biomembr.* 41:127–132. doi:10.1007/s10863-009-9216-8
- Liu, Y., M. Porta, J. Qin, J. Ramos, A. Nani, T.R. Shannon, and M. Fill. 2010. Flux regulation of cardiac ryanodine receptor channels. *J. Gen. Physiol.* 135:15–27. doi:10.1085/jgp.200910273
- Lukyanenko, V., I. Györke, and S. Györke. 1996. Regulation of calcium release by calcium inside the sarcoplasmic reticulum in ventricular myocytes. *Pflugers Arch.* 432:1047–1054. doi:10.1007/s004240050233
- Maloyan, A., A. Sanbe, H. Osinska, M. Westfall, D. Robinson, K. Imahashi, E. Murphy, and J. Robbins. 2005. Mitochondrial dysfunction and apoptosis underlie the pathogenic process in alpha-B-crystallin desmin-related cardiomyopathy. *Circulation.* 112:3451–3461. doi:10.1161/CIRCULATIONAHA.105.572552
- Marks, A.R., S. Priori, M. Memmi, K. Kontula, and P.J. Laitinen. 2002. Involvement of the cardiac ryanodine receptor/calcium release channel in catecholaminergic polymorphic ventricular tachycardia. *J. Cell. Physiol.* 190:1–6. doi:10.1002/jcp.10031
- Marx, S.O., S. Reiken, Y. Hisamatsu, T. Jayaraman, D. Burkhoff, N. Roseblit, and A.R. Marks. 2000. PKA phosphorylation dissociates FKBP12.6 from the calcium release channel (ryanodine receptor): defective regulation in failing hearts. *Cell.* 101:365–376. doi:10.1016/S0092-8674(00)80847-8
- Mohler, P.J., and V. Bennett. 2005. Ankyrin-based cardiac arrhythmias: a new class of channelopathies due to loss of cellular targeting. *Curr. Opin. Cardiol.* 20:189–193. doi:10.1097/01.hco.0000160372.95116.3e
- Mohler, P.J., J.J. Schott, A.O. Gramolini, K.W. Dilly, S. Guatimosim, W.H. duBell, L.S. Song, K. Haurogné, F. Kyndt, M.E. Ali, et al. 2003. Ankyrin-B mutation causes type 4 long-QT cardiac arrhythmia and sudden cardiac death. *Nature.* 421:634–639. doi:10.1038/nature01335
- Muntoni, F., S. Torelli, and A. Ferlini. 2003. Dystrophin and mutations: one gene, several proteins, multiple phenotypes. *Lancet Neurol.* 2:731–740. doi:10.1016/S1474-4422(03)00585-4
- O'Neill, S.C., and D.A. Eisner. 1990. A mechanism for the effects of caffeine on Ca<sup>2+</sup> release during diastole and systole in isolated rat ventricular myocytes. *J. Physiol.* 430:519–536.
- O'Rourke, B., and L.A. Blatter. 2009. Mitochondrial Ca<sup>2+</sup> uptake: tortoise or hare? *J. Mol. Cell. Cardiol.* 46:767–774. doi:10.1016/j.yjmcc.2008.12.011
- Ohlendieck, K., K. Matsumura, V.V. Ionasescu, J.A. Towbin, E.P. Bosch, S.L. Weinstein, S.W. Sernett, and K.P. Campbell. 1993. Duchenne muscular dystrophy: deficiency of dystrophin-associated proteins in the sarcolemma. *Neurology.* 43:795–800.
- Overend, C.L., D.A. Eisner, and S.C. O'Neill. 1997. The effect of tetracaine on spontaneous Ca<sup>2+</sup> release and sarcoplasmic reticulum calcium content in rat ventricular myocytes. *J. Physiol.* 502:471–479. doi:10.1111/j.1469-7793.1997.471bj.x
- Palty, R., W.F. Silverman, M. Hershinkel, T. Caporale, S.L. Sensi, J. Parnis, C. Nolte, D. Fishman, V. Shoshan-Barmatz, S. Herrmann, et al. 2010. NCLX is an essential component of mitochondrial Na<sup>+</sup>/Ca<sup>2+</sup> exchange. *Proc. Natl. Acad. Sci. USA.* 107:436–441. doi:10.1073/pnas.0908099107
- Pessah, I.N., K.H. Kim, and W. Feng. 2002. Redox sensing properties of the ryanodine receptor complex. *Front. Biosci.* 7:a72–a79. doi:10.2741/pessah
- Postma, A.V., I. Denjoy, T.M. Hoortjje, J.M. Lupoglazoff, A. Da Costa, P. Sebillon, M.M. Mannens, A.A. Wilde, and P. Guicheney. 2002. Absence of calsequestrin 2 causes severe forms of catecholaminergic polymorphic ventricular tachycardia. *Circ. Res.* 91:e21–e26. doi:10.1161/01.RES.0000038886.18992.6B
- Prins, K.W., J.L. Humston, A. Mehta, V. Tate, E. Ralston, and J.M. Ervasti. 2009. Dystrophin is a microtubule-associated protein. *J. Cell Biol.* 186:363–369. doi:10.1083/jcb.200905048
- Quinlan, J.G., H.S. Hahn, B.L. Wong, J.N. Lorenz, A.S. Wenisch, and L.S. Levin. 2004. Evolution of the mdx mouse cardiomyopathy: physiological and morphological findings. *Neuromuscul. Disord.* 14:491–496. doi:10.1016/j.nmd.2004.04.007
- Rousseau, E., and G. Meissner. 1989. Single cardiac sarcoplasmic reticulum Ca<sup>2+</sup>-release channel: activation by caffeine. *Am. J. Physiol.* 256:H328–H333.
- Santana, L.F., H. Cheng, A.M. Gómez, M.B. Cannell, and W.J. Lederer. 1996. Relation between the sarcolemmal Ca<sup>2+</sup> current and Ca<sup>2+</sup> sparks and local control theories for cardiac excitation-contraction coupling. *Circ. Res.* 78:166–171.
- Sobie, E.A., K.W. Dilly, J. dos Santos Cruz, W.J. Lederer, and M.S. Jafri. 2002. Termination of cardiac Ca(2+) sparks: an investigative mathematical model of calcium-induced calcium release. *Biophys. J.* 83:59–78. doi:10.1016/S0006-3495(02)75149-7
- Sobie, E.A., S. Guatimosim, L. Gómez-Viquez, L.S. Song, H. Hartmann, M. Saleet Jafri, and W.J. Lederer. 2006. The Ca<sup>2+</sup> leak paradox and rogue ryanodine receptors: SR Ca<sup>2+</sup> efflux theory and practice. *Prog. Biophys. Mol. Biol.* 90:172–185. doi:10.1016/j.pbiomolbio.2005.06.010
- Soeller, C., and M.B. Cannell. 1997. Numerical simulation of local calcium movements during L-type calcium channel gating in the cardiac diad. *Biophys. J.* 73:97–111. doi:10.1016/S0006-3495(97)78051-2
- Stern, M.D., L.S. Song, H. Cheng, J.S. Sham, H.T. Yang, K.R. Boheler, and E. Ríos. 1999. Local control models of cardiac

- excitation-contraction coupling. A possible role for allosteric interactions between ryanodine receptors. *J. Gen. Physiol.* 113:469–489. doi:10.1085/jgp.113.3.469
- Sun, J., N. Yamaguchi, L. Xu, J.P. Eu, J.S. Stamler, and G. Meissner. 2008. Regulation of the cardiac muscle ryanodine receptor by O(2) tension and S-nitrosoglutathione. *Biochemistry.* 47:13985–13990. doi:10.1021/bi8012627
- Terentyev, D., S.E. Cala, T.D. Houle, S. Viatchenko-Karpinski, I. Gyorke, R. Terentyeva, S.C. Williams, and S. Gyorke. 2005. Triadin overexpression stimulates excitation-contraction coupling and increases predisposition to cellular arrhythmia in cardiac myocytes. *Circ. Res.* 96:651–658. doi:10.1161/01.RES.0000160609.98948.25
- Terentyev, D., I. Györke, A.E. Belevych, R. Terentyeva, A. Sridhar, Y. Nishijima, E.C. de Blanco, S. Khanna, C.K. Sen, A.J. Cardounel, et al. 2008. Redox modification of ryanodine receptors contributes to sarcoplasmic reticulum Ca<sup>2+</sup> leak in chronic heart failure. *Circ. Res.* 103:1466–1472. doi:10.1161/CIRCRESAHA.108.184457
- Terentyev, D., A.E. Belevych, R. Terentyeva, M.M. Martin, G.E. Malana, D.E. Kuhn, M. Abdellatif, D.S. Feldman, T.S. Elton, and S. Györke. 2009. miR-1 overexpression enhances Ca(2+) release and promotes cardiac arrhythmogenesis by targeting PP2A regulatory subunit B56alpha and causing CaMKII-dependent hyperphosphorylation of RyR2. *Circ. Res.* 104:514–521. doi:10.1161/CIRCRESAHA.108.181651
- Ullrich, N.D., M. Fanchouy, K. Gusev, N. Shirokova, and E. Niggli. 2009. Hypersensitivity of excitation-contraction coupling in dystrophic cardiomyocytes. *Am. J. Physiol. Heart Circ. Physiol.* 297:H1992–H2003. doi:10.1152/ajpheart.00602.2009
- Valdivia, H.H., J.H. Kaplan, G.C. Ellis-Davies, and W.J. Lederer. 1995. Rapid adaptation of cardiac ryanodine receptors: modulation by Mg<sup>2+</sup> and phosphorylation. *Science.* 267:1997–2000. doi:10.1126/science.7701323
- Venetucci, L.A., A.W. Trafford, and D.A. Eisner. 2007. Increasing ryanodine receptor open probability alone does not produce arrhythmogenic calcium waves: threshold sarcoplasmic reticulum calcium content is required. *Circ. Res.* 100:105–111. doi:10.1161/01.RES.0000252828.17939.00
- Viatchenko-Karpinski, S., D. Terentyev, I. Györke, R. Terentyeva, P. Volpe, S.G. Priori, C. Napolitano, A. Nori, S.C. Williams, and S. Györke. 2004. Abnormal calcium signaling and sudden cardiac death associated with mutation of calsequestrin. *Circ. Res.* 94:471–477. doi:10.1161/01.RES.0000115944.10681.EB
- Ward, M.L., I.A. Williams, Y. Chu, P.J. Cooper, Y.K. Ju, and D.G. Allen. 2008. Stretch-activated channels in the heart: contributions to length-dependence and to cardiomyopathy. *Prog. Biophys. Mol. Biol.* 97:232–249. doi:10.1016/j.pbiomolbio.2008.02.009
- Wehrens, X.H., S.E. Lehnart, F. Huang, J.A. Vest, S.R. Reiken, P.J. Mohler, J. Sun, S. Guatimosim, L.S. Song, N. Rosembli, et al. 2003. FKBP12.6 deficiency and defective calcium release channel (ryanodine receptor) function linked to exercise-induced sudden cardiac death. *Cell.* 113:829–840. doi:10.1016/S0092-8674(03)00434-3
- Wehrens, X.H., S.E. Lehnart, S.R. Reiken, S.X. Deng, J.A. Vest, D. Cervantes, J. Coromilas, D.W. Landry, and A.R. Marks. 2004. Protection from cardiac arrhythmia through ryanodine receptor-stabilizing protein calstabin2. *Science.* 304:292–296. doi:10.1126/science.1094301
- Wehrens, X.H., S.E. Lehnart, and A.R. Marks. 2005. Intracellular calcium release and cardiac disease. *Annu. Rev. Physiol.* 67:69–98. doi:10.1146/annurev.physiol.67.040403.114521
- Weisleder, N., G.E. Taffet, and Y. Capetanaki. 2004. Bcl-2 overexpression corrects mitochondrial defects and ameliorates inherited desmin null cardiomyopathy. *Proc. Natl. Acad. Sci. USA.* 101:769–774. doi:10.1073/pnas.0303202101
- Wilding, J.R., J.E. Schneider, A.E. Sang, K.E. Davies, S. Neubauer, and K. Clarke. 2005. Dystrophin- and MLP-deficient mouse hearts: marked differences in morphology and function, but similar accumulation of cytoskeletal proteins. *FASEB J.* 19:79–81.
- Williams, I.A., and D.G. Allen. 2007a. Intracellular calcium handling in ventricular myocytes from mdx mice. *Am. J. Physiol. Heart Circ. Physiol.* 292:H846–H855. doi:10.1152/ajpheart.00688.2006
- Williams, I.A., and D.G. Allen. 2007b. The role of reactive oxygen species in the hearts of dystrophin-deficient mdx mice. *Am. J. Physiol. Heart Circ. Physiol.* 293:H1969–H1977. doi:10.1152/ajpheart.00489.2007
- Wu, X., and D.M. Bers. 2006. Sarcoplasmic reticulum and nuclear envelope are one highly interconnected Ca<sup>2+</sup> store throughout cardiac myocyte. *Circ. Res.* 99:283–291.
- Xu, L., R. Jones, and G. Meissner. 1993. Effects of local anesthetics on single channel behavior of skeletal muscle calcium release channel. *J. Gen. Physiol.* 101:207–233. doi:10.1085/jgp.101.2.207
- Xu, L., J.P. Eu, G. Meissner, and J.S. Stamler. 1998. Activation of the cardiac calcium release channel (ryanodine receptor) by poly-S-nitrosylation. *Science.* 279:234–237. doi:10.1126/science.279.5348.234
- Xu, W., Y. Liu, S. Wang, T. McDonald, J.E. Van Eyk, A. Sidor, and B. O'Rourke. 2002. Cytoprotective role of Ca<sup>2+</sup> activated K<sup>+</sup> channels in the cardiac inner mitochondrial membrane. *Science.* 298:1029–1033. doi:10.1126/science.1074360
- Yasuda, S., D. Townsend, D.E. Michele, E.G. Favre, S.M. Day, and J.M. Metzger. 2005. Dystrophic heart failure blocked by membrane sealant poloxamer. *Nature.* 436:1025–1029. doi:10.1038/nature03844