

HUMAN CLINICAL ARTICLE

Two phase I/II clinical trials for the treatment of urinary incontinence with autologous mesenchymal stem cells

Mariano Garcia-Arranz^{1,2}  | Sergio Alonso-Gregorio³ | Pamela Fontana-Portella⁴ | Elena Bravo⁵ | Jesus Diez Sebastian⁶ | María Eugenia Fernandez-Santos⁷ | Damian Garcia-Olmo^{1,2}

¹New Therapies Laboratory, Health Research Institute-Fundación Jiménez Díaz University Hospital (IIS-FJD), Madrid, Spain

²Surgery Department, Autonoma University of Madrid, Madrid, Spain

³Department of Urology, Hospital De la Cruz Roja San José y Santa Adela, Madrid, Spain

⁴Department of Urology, La Paz University Hospital, Madrid, Spain

⁵Department of Plastic Surgery, La Paz University Hospital, Madrid, Spain

⁶Statistics Department, La Paz University Hospital, Madrid, Spain

⁷GMP-Cell Production Unit, Instituto de Investigación Sanitaria Gregorio Marañón (IISGM), Madrid, Spain

Correspondence

Mariano Garcia-Arranz, PhD, New Therapy Laboratory, Health Research Institute Fundación Jiménez Díaz (FIIS-FJD), Universidad Autónoma de Madrid, Avda Reyes Católicos 2, 28040 Madrid, Spain.
Email: mariano.garcia@quironsalud.es

Funding information

European Regional Development Fund, Grant/Award Number: S2017/BMD-3692-AVANCELL; European Social Fund; Comunidad de Madrid; RETIC Program of ISCIII-FEDER, Grant/Award Numbers: RD16/0011/0029, RD16/0011/0013; Spanish Ministry of Health and Consumer Affairs, Grant/Award Numbers: EC10/351, TRA002

Abstract

We evaluated the safety and feasibility of adipose-derived mesenchymal stem cells to treat endoscopically urinary incontinence after radical prostatectomy in men or female stress urinary. We designed two prospective, nonrandomized phase I-IIa clinical trials of urinary incontinence involving 9 men (8 treated) and 10 women to test the feasibility and safety of autologous mesenchymal stem cells for this use. Cells were obtained from liposuction containing 150 to 200 g of fat performed on every patient. After 4 to 6 weeks and under sedation, endoscopic intraurethral injection of the cells was performed. On each visit (baseline, 1, 3, 6, and 12 months), clinical parameters were measured, and blood samples, urine culture, and uroflowmetry were performed. Every patient underwent an urethroscopy and urodynamic studies on the first and last visit. Data from pad test, quality-of-life and incontinence questionnaires, and pads used per day were collected at every visit. Statistical analysis was done by Wilcoxon signed-rank test. No adverse effects were observed. Three men (37.5%) and five women (50%) showed an objective improvement of >50% ($P < .05$) and a subjective improvement of 70% to 80% from baseline. In conclusion, intraurethral application of stem cells derived from adipose tissue is a safe and feasible procedure to treat urinary incontinence after radical prostatectomy or in female stress urinary incontinence. A statistically significant difference was obtained for pad-test improvement in 3/8 men and 5/10 women. Our results encourage studies to confirm safety and to analyze efficacy.

KEYWORDS

adipose-derived stem cells, cellular therapy, male/female urinary incontinence, phase IIa clinical trial

1 | INTRODUCTION

The International Continence Society defines urinary incontinence as "any involuntary loss of urine that is a social or hygienic problem."

Following benign prostatic hyperplasia surgery, a mean of 0.5% to 2%

Mariano Garcia-Arranz and Sergio Alonso-Gregorio contributed equally to this study.

This is an open access article under the terms of the Creative Commons Attribution License, which permits use, distribution and reproduction in any medium, provided the original work is properly cited.

© 2020 The Authors. STEM CELLS TRANSLATIONAL MEDICINE published by Wiley Periodicals LLC on behalf of AlphaMed Press.

of male patients develop incontinence,^{1,2} and after radical prostatectomy, this figure ranges from 5% to 60%.³ Prostate cancer is the most frequently diagnosed type of cancer in men.⁴

Female stress urinary incontinence (SUI) is the involuntary leakage of urine during events that result in increased abdominal pressure in the absence of a bladder contraction due to effort or exertion or on sneezing or coughing.⁵ In 2017, estimates of its prevalence in the female population range from 10% to 40%.^{6,7} SUI is associated with significant impairment in quality of life and has a significant socioeconomic impact, with costs steadily increasing as the population ages.^{8,9}

After radical prostatectomy, urinary sphincter injury is thought to be the main cause of urinary incontinence, as supported by urodynamic studies.^{10,11} Many therapeutic options in male and female urinary incontinence have been used for treatment, with varying degrees of success; these include pelvic floor rehabilitation, bulking agents, slings, and artificial urinary sphincters.¹²⁻¹⁴ The cost of the disease borne by health systems is substantial.¹⁵

New approaches are being considered to improve the treatment, but its development is still uncertain (eg, 3D bioprinted muscle¹⁶ or tissue engineering¹⁷). Mesenchymal stem cells (MSCs) have demonstrated, in experimental models, safety and efficacy against urinary incontinence.¹⁸ But not only MSCs have demonstrated their efficiency in experimental models; in recent years, the proteins secreted by MSCs are generating interesting expectations for the treatment of urinary incontinence.^{19,20} Numerous safety clinical trials have also been developed to analyze the safety of different MSCs for the treatment of urinary incontinence²¹; unfortunately, there are many differences between cellular origin, application system, and follow-up.

The ability of adult MSCs from adipose tissue, called adipose-derived stem cells (ASCs), to differentiate into several cell lines has been widely described.²² Zuk et al demonstrated the capacity for myocyte differentiation *in vitro* when cultured next to myoblasts,²³ and an *in vivo* experiment in a model of ischemic muscular injury showed ASCs in 20% of myotubes in repair, thereby confirming that ASCs can participate in muscle repair if they are in a "myogenic environment."²⁴ Only two papers have been published on ASCs for urinary incontinence: one used stromal vascular fraction, and the other is a pilot study with ASC cultures combined with bovine collagen in female patients.^{25,26}

We present the results of two phase I-IIa trials to be registered at ClinicalTrials.gov in which autologous ASCs are used for urinary incontinence treatment after radical prostatectomy, and the first one for female SUI.

2 | MATERIALS AND METHODS

Both trials were approved by the Spanish Agency for Medicines and Health Products (AEMPS) and the Ethics Committee of La Paz Hospital (CEIC) and were registered at ClinicalTrials.gov (NCT01799694 and NCT01804153). All patients signed the informed consent form.

In both, the main objective was to assess the feasibility of the process and the safety of the cell therapy, and the secondary

Lessons learned

- This safety clinical trial made use of mesenchymal stem cells for the treatment of urinary incontinence
- Intraurethral application of stem cells derived from adipose tissue is a safe and feasible procedure to treat urinary incontinence.

Significance statement

This article reports the results of two clinical trials that studied safety of the treatment of urinary incontinence in men and women through the use of mesenchymal stem cells derived from adipose tissue obtained from the patient or cultured *ex vivo*.

objective was to obtain preliminary results about therapeutic efficacy. We designed two clinical trials in which a total of 10 patients per trial would be recruited. All patients presented urinary incontinence after radical prostatectomy in the men's trial and SUI in the women's trial, and after conservative treatment had failed (Figure 1).

The mean age of the patients enrolled in the men's trial was 67.6 years, with an SD of 5.2; likewise, the incontinence evolution time was 60.5 months, with an SD of 24.5.

The mean age of the patients enrolled in the women's trial was 56.8 years, with an SD of 9.00; likewise, the incontinence evolution time was at least 12 months.

This study was designed to evaluate the feasibility and safety of ASC use and to produce preliminary efficiency results obtained using an independent evaluator. Men were enrolled from May 2011 to February 2012 and women were enrolled from September 2012 to April 2014, according to the inclusion and exclusion criteria (Table 1).

Screening procedures included complete medical history, routine laboratory analysis, urodynamic and uroflowmetry analysis, urethrocytoscopy, a pad test, and quality-of-life surveys (The Short Form (36) Health Survey, SF-36 and International Consultation on Incontinence Questionnaire, ICIQ-SF).

All patients completed a questionnaire before cell implantation and on every visit as appears in the protocol including complete medical history, biochemistry and hematologic analysis, urodynamic assays, and urethrocytoscopy; Spanish regulatory authorities previously approved both protocols. Patients were diagnosed with urinary incontinence by means of a urodynamic study; in addition, all patients underwent a urethrocytoscopy to rule out urethral abnormalities or abnormalities of vesicourethral anastomosis. Both tests were repeated at the end of the trial.

Liposuction was performed in the plastic surgery department under local sedation. An incision of less than 5 mm was made in the

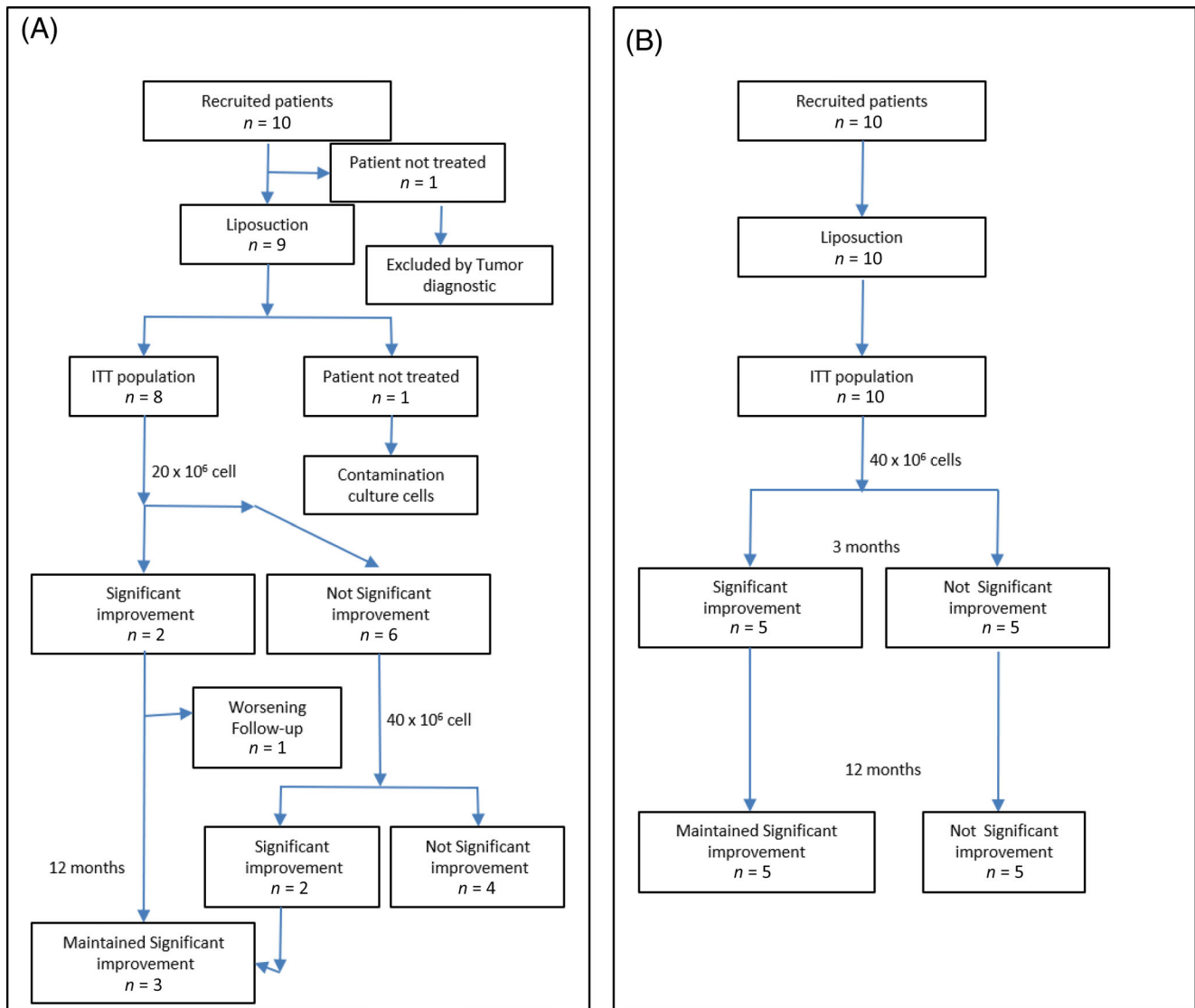


FIGURE 1 Flowchart. A, The men's clinical trial, in which nine patients were recruited; before cell implant, one patient was excluded because of tumor diagnosis. No adverse events were observed. Significant improvement was achieved by three patients. B, The women's clinical trial, in which 10 patients were recruited; significant improvement was achieved by 5 patients. No adverse events were observed. ITT, intention-to-treat

skin and a small-drilled needle was inserted into the subcutaneous tissue. In all cases, we obtained 150 to 200 cc of adipose tissue.

The treatment began, in the men's clinical trial, with an initial implantation of 20×10^6 ASCs followed by a clinical evaluation after 3 months, and if significant improvement in incontinence was not achieved, a second implantation of 40×10^6 ASCs was performed. In the women's clinical trial, only a cell implantation of 40×10^6 ASCs was performed with the same follow-up.

2.1 | ASC preparation

The isolation of ASCs from lipoaspirate has been described previously.²⁷ We used MSCs derived from subcutaneous adipose tissue obtained by liposuction and processed by the Gregorio Marañón

Hospital (Madrid, Spain; manufacturer authorization no: AEMPS-20090211-TA and ES/1251/18, according to the PEI 04-031; Product in Clinical Research) and according to Spanish and European legislation (ASC production is only permitted in good manufacturing practice conditions). ASCs were obtained exclusively by collagenase digestion and culture with Dulbecco's modified Eagle's medium supplemented with 10% fetal bovine serum, after washing extensively and removing cells attached to the plastic; Before applying to patients according to the EMEACHMP4108692006 cell therapy guide, cells were characterized as mesenchymal stem cell: cell differentiation to osteoblast, chondrocytes and adipocytes, and flow cytometry with positive (CD27, CD44, CD90, and CD105) and negative markers (CD34, CD45, and CD73) (Supplementary Data). Cultivation and expansion of cells continued in an authorized procedure until the required number of cells for implantation (dose) was obtained. For quality-control and logistical

TABLE 1 Inclusion and exclusion criteria*Inclusion criteria—men trial*

- Signed informed consent.
- Men over 18 years old. Good general state of health according to the findings of the clinical history and the physical examination.
- Prostate cancer-diagnosed subjects via a biopsy and having had a radical surgery with a healing purpose in the previous 18 months.
- Having urinary incontinence after the surgery.
- Failure in any previous conservative treatment.

Inclusion criteria—women trial

- Signed informed consent.
- Good general state of health according to the findings of the clinical history and the physical examination.
- Postmenopausal or over 18-years-old women taking highly effective contraceptives following the ICH (M3) EMA guide.
- Women having rejected de-rehabilitation treatment or in whom the treatment had failed.
- Genuine or combined stress urinary incontinence diagnosed with at least 1 year of evolution.

Exclusion criteria

- Adjuvant therapy.
- Prostate-specific antigen (PSA) ≥ 0.2 ng/dL after surgery. (Only men's trial)
- Present any sign or symptom that could indicate cancer progression. (Only men's trial)
- Present bladder outlet obstruction (means by uroflowmetry and urethrocytoscopy).
- Active urine infection.
- Alcohol or another addictive substances abuse during the 6 months before inclusion.
- Presenting any other malignant neoplasia unless it is a basocellular or a skin epidermoide carcinoma or presents antecedents of malignant tumors, unless they are in a remission phase for the previous 5 years.
- Cardiopulmonar illness, that by investigator decision, is instable or severe enough as to warrant patient exclusion.
- Medical or psychiatric illness, that in the investigators opinion, could imply warrant patient exclusion.
- Subjects with congenital or acquired immunodeficiencies, hepatitis B and/or C hepatitis, tuberculosis, or Treponema infection diagnosed at the moment of inclusion.
- Pregnant or lactating women. (Only women's trial)
- Anesthetic allergy.
- Major surgery or severe traumatism within over 6 months prior.
- Administration of any drug under experimentation in the present or 3 months before recruitment.

reasons, the doses of cells were cryopreserved in liquid N₂ (30% cell death: producer data). At least 1 week before the date of implantation, the cells were thawed and cultured. For administration, the cells were suspended in a sterile lactated Ringer's solution with 1% human albumin at 1×10^7 cells/mL. Samples were taken before release to examine viability, DNA stability, and pathogen controls (analysis

performed by the producer). For implantation, 20×10^6 ASCs were prepared and 40×10^6 were cryopreserved for each male patient, in case they need a second dose, and 40×10^6 ASCs were prepared for each female patient.

2.2 | Treatment

In both trials, under direct vision and with the patient under sedation and in the lithotomy position, cell implantation was performed in the area close to the bladder neck and along the external sphincter using a compact cystoscope (17 Ch) and an endoscopic needle (7 Ch) for cell injection. A random distribution of cellular material was made, injecting volumes of 0.2 to 0.3 mL of ASCs at a depth of less than 0.5 mm; 7 to 8 injections (volume: 2 mL) were performed in all cases in the urinary sphincter of men and in women from the neck to the middle urethra.

2.3 | Follow-up

The feasibility of the process was assessed based on the absence of problems during sample collection, cell culture, and cell implantation, although in one case, the tissue from the liposuction was contaminated and liposuction had to be repeated because the fungal contamination could not be eliminated during cell culture.

Safety was assessed in terms of the incidence of adverse events and serious adverse events. Patients were monitored for adverse events at each study visit (implant, 4, 12, 24 weeks, and 1 year) and for any other observation that could alert of a possible abnormal/deleterious impact of ASCs. During follow-up, we analyzed changes in medical history, blood pressure, heart rate, temperature, systemic parameters (biochemical and hematological features), and local parameters (urine culture, uroflowmetry, cystoscope, and urodynamic evaluation). We also collected SF-36 and ICIQ-SF surveys.

Clinical response was defined as an objective improvement in urine leakage of more than 50% relative to baseline values as quantified by the pad test.

2.4 | Statistical analysis

The database was analyzed using the SPSS v.11.5 program (IBM, Armonk, New York). *P* values of $<.05$ were considered statistically significant. Values are shown in numbers and percentages. Quantitative values were compared by performing a temporal evolution study, and a before-after paired test was compared using a nonparametric Wilcoxon test (Wilcoxon signed-rank test).

3 | RESULTS

In the men's trial, 10 patients were recruited, one of whom was diagnosed with a pancreatic tumor after liposuction and was excluded

before cellular treatment. In another case, the cells were contaminated and liposuction had to be repeated, which left us with eight patients finally treated with cell therapy.

In the women's trial, 10 patients were recruited, all were treated, and all the follow-up was carried out without deviations from the protocol.

In all cases, liposuction and cell culture were performed without any incident except for one case of fungal contamination in the men's trial, which led to a repeat liposuction. The patients may have occasional local pain and a slight hematoma in the abdominal region. In all cases, endoscopic injection was performed without complications. Most patients complained of dysuria for 2 to 3 days. The trial showed that isolation, expansion, and implantation of cells are feasible.

From a safety point of view, the cell therapy had no adverse effects on any patients in any trial, neither from a clinical nor from an analytic perspective. The data recorded did not reveal any adverse events (AEs) as concerns all of the variables collected.

In the men's trial, none of the patients suffered a biochemical relapse of their prostate cancer (prostate-specific antigen [PSA] value) during the 12- to 36-month follow-up. Two of the eight patients

received only the first injection of 20×10^6 ASCs, and the other six received a second injection of 40×10^6 ASCs after 3 months (Figure 1A). Cases 5 and 9 (2/8) showed an objective clinical improvement of more than 50% after 3 months of follow-up after 20×10^6 ASC treatment; this improvement, with no AEs related to cell therapy, was confirmed by the absence of abnormalities in the uroflowmetry test or pad test performed during each visit and with a urethroscopy at final evaluation (Table 2). Case 9 worsened after 6 months and returned to baseline by month 9. Case 5 maintained this improved state after 12 months of follow-up and went from 16 g of urine leakage to 3 g at the end of the trial (Tables 2, 3).

Cases 2 and 8 (2/6) were treated with a second cell injection of 40×10^6 ASCs and showed an objective clinical improvement of more than 50%, which was maintained over 12 months of follow-up. This improvement, with no AEs related to cell therapy, was confirmed by the absence of abnormalities in the uroflowmetry test and pad test performed during each visit and with a urethroscopy at final evaluation (Table 2). Case 2 went from 41 g of urine leakage to 9 g at final evaluation, and case 8 progressed from 287 to 123 g (Table 3).

TABLE 2 Urodynamics and voiding evaluation

Men	Urethral profile		Cough leakage		Urodynamics	
	Before implant	End line	Before implant	End line	Before implant	End line
Case 1	<5	<5	Positive	Positive	UI	UI
Case 2	14	59	Positive	Negative ^a	UI	No UI ^a
Case 3	8	12	Positive	Positive	UI	UI
Case 4	12	12	Positive	Positive	UI	UI
Case 5	18	10	Positive	Negative ^a	UI	UI ^{a,b}
Case 6	Excluded					
Case 7	26	20	Positive	Positive	UI	UI
Case 8	13	62	Positive	Negative ^a	UI	No UI ^a
Case 9	67	12	Positive	Positive	UI	UI
Women	Urethral profile		Cough leakage		Urodynamics	
	Before implant	End line	Before implant	End line	Before implant	End line
Case 1	22	16	Positive	Positive	UI	UI
Case 2	30	35	Positive	Positive	UI	UI
Case 3	No obtained	40	Positive	Negative ^a	UI	UI ^{a,b}
Case 4	21	33	Positive	Positive	UI	UI
Case 5	74	91	Positive	Negative ^a	UI	No UI ^a
Case 6	24	23	Positive	Negative ^a	UI	No UI ^a
Case 7	61	84	Positive	Negative ^a	UI	No UI ^a
Case 8	61	36	Positive	Negative ^a	UI	No UI ^a
Case 9	43	35	Positive	Negative ^a	UI	No UI ^a
Case 10	31	27	Positive	Positive	UI	UI

Note: Urethral profile measured in CmH₂O.

Abbreviation: UI, urinary incontinence.

^aPatients with good clinical response.

^bImprovement.

TABLE 3 Urinary incontinence measurement (pad test in grams)

Men (<i>P</i> < .05)	20 million ASCs					40 million ASCs				
	Before implant	Visit 1	Visit 2	Visit 3	End line	Before implant	Visit 1	Visit 2	Visit 3	End line
Case 1	40	35	38	44	40	40	62	70	44	54
Case 2 ^a	41	30	20	24	41	41 ^a	30 ^a	20 ^a	2 ^a	9 ^a
Case 3	169	55	98	76	169	169	120	90	149	130
Case 4	42	32	19	31	42	42	36	34	36	44
Case 5 ^a	16 ^a	12 ^a	12 ^a	10 ^a	3 ^a	Not applicable				
Case 6	Not applicable (patient excluded prior to cell implantation)									
Case 7	147	197	178	100	147	147	138	114	230	138
Case 8 ^a	287	295	246	218	287	287 ^a	83 ^a	110 ^a	118 ^a	123 ^a
Case 9	4	1	1	2	3	Not applicable				
Women (<i>P</i> < .05)	40 million ASCs									
	Before implant	Visit 1	Visit 2	Visit 3	End line					
Case 1	11	8	10	3	21					
Case 2	7	2	23	20	12					
Case 3	1	1	1	0	2					
Case 4	14	4	2	7	13					
Case 5 ^a	22 ^a	8 ^a	10 ^a	11 ^a	6 ^a					
Case 6 ^a	22 ^a	15 ^a	12 ^a	2 ^a	1 ^a					
Case 7 ^a	17 ^a	4 ^a	5 ^a	6 ^a	0 ^a					
Case 8 ^a	14 ^a	48 ^a	14 ^a	6 ^a	5 ^a					
Case 9 ^a	18 ^a	10 ^a	14 ^a	6 ^a	0 ^a					
Case 10	96	58	120	141	69					

Abbreviation: ASCs, adipose-derived stem cells.

^aPatients with positive evolution.

In the women's trial, all patients received only an injection of 40×10^6 ASCs (Figure 1B). Cases 4-8 (5/10) showed an objective clinical improvement of more than 50% after 3 months of follow-up after 40×10^6 ASC treatment; this improvement, with no AEs, was confirmed by the absence of abnormalities in the uroflowmetry test and pad test performed during each visit and with an urethroscopy at final evaluation (Table 2).

Cases 5-9 (5/10) showed an objective clinical improvement at final evaluation. Four patients were continent and one showed an objective clinical improvement of more than 50% a year after cell implantation. Case 10 passed from 96 pads before cell implant to 69 pads. And cases 3 and 4 showed a very slight improvement. In cases 1 and 2, we consider that there was a bulking effect due to the observed evolution (Table 3).

In summary, in the men's and women's trials, three (37.5%) and five (50%) patients, respectively, showed an objective clinical improvement of more than 50%, constituting a statistically significant difference (*P* < .05). This improvement was maintained over time and showed in pad test and urodynamic evaluation.

We used the SF-36 and ICIQ-SF for the quality-of-life analysis and were unable to prove any statistical differences during follow-up in any trials.

4 | DISCUSSION

Surgical treatment is the gold-standard therapy for urinary incontinence, when noninvasive therapies have failed and short-term success has been achieved with injectable bulking agents.^{28,29} The standard treatment for urinary incontinence in men is a conservative treatment during the first year after surgery, according to our experience and the recommendations of Kadoto et al,³⁰ and a second treatment with an artificial urinary sphincter. The standard treatment in women is tension-free suburethral mesh if the treatment by rehabilitation of the pelvic floor has failed. The success rate for those procedures in men is at least 80%, the complication rate is <10%, and the patient satisfaction rate is around 75% to 95%. The success rate for the procedure in women is more than 80% to 90% after more than 5 years of follow-up. However, these procedures have certain complications.³¹ Complications, high cost, and not 100% long-term efficacy force us to seek alternative treatments for SUI.^{32,33} Stem cell therapy has been investigated in different clinical applications.³⁴⁻³⁸ Taking advantage of its capacity to induce tissue regeneration, stem cell treatment may be a promising strategy to overcome the current treatments for SUI.³⁹

In these studies, we used autologous cells to avoid the risk of rejection. Another important aspect of cellular therapy is the

progressive normalization of the associated costs, thus making it an increasingly cost-effective option.

We believe that the low risk generated during outpatient liposuction followed by implantation of cells by endoscopic injection in the sphincter while the patient is under sedation, has advantages over traditional treatments. Moreover, the cost of both procedures (including liposuction and cell implant) is less than that of conventional treatments, mainly because the treatment occupies a short surgical room time and the patient does not need hospitalization. And this will be lower in the future if we can carry out allogenic treatments.

Sample collection, processing, and cell cultivation were performed under protocols designed by the research team and the production laboratory and were approved and validated by CEIC and AEMPS. It is noteworthy that cell expansion is performed in adherence of legislation and in licensed facilities, thus guaranteeing that the product administered to patients is homogeneous. In addition, unlike several previously described endoscopic treatments (bulking agents), we observed no cases of urethral structure and/or rigidity in the injection zones, nor did we find any alteration of voiding quality or worsening of incontinence as evidenced by uroflowmetry, urodynamic study, and pad tests performed on every visit. Furthermore, on the last visit, an urethrocystoscopy was performed on all patients to ensure the safety and effectiveness of intraurethral injections compared with the baseline.

Multiple parameters were collected for every patient before cell implantation and during every visit. We found no evidence of a systemic effect of cell therapy. More importantly, we observed no PSA-level alterations in either the follow-up of any patient or in the subsequent routine follow-up (>3 years after cell therapy) in the men's trial. We can thus state that cell therapy, when administered in selected patients who meet disease-free criteria, does not interfere with prostate cancer evolution, at least in our series of patients. Oncologic safety is a major issue in cell therapy, and several studies support this oncologic safety in time and support our clinical findings obtained over the short follow-up involved in this study.⁴⁰⁻⁴²

The number of patients included does not allow us to make any statements on the effectiveness of the treatment. Probably the best way to evaluate urinary incontinence is the pad test and assessment of urine leakage through quality-of-life questionnaires.⁴³⁻⁴⁶ We used two questionnaires and did not find any statistical differences with these tools, likely because they were not the best surveys and no patient was cured in the men's trial. However, we think that the SF-36 questionnaire is not the most appropriate to analyze the quality of life of patients with incontinence, and for future trials, we propose using the Incontinence Quality of Life Questionnaires (IQOL) Test or King's Health Questionnaire.⁴⁷ From an objective perspective, we used the number of pads per day, the 24-hour pad test, and urodynamic studies (Tables 2 and 3). During follow-up, we defined two time points for evaluation of therapeutic efficacy (3 and 12 months), making this decision in light of published accounts stating that, for endoscopic bulking agent treatments, initial response was lost after the disappearance of the bulking effect during the first 3 months.^{14,28,48}

The decision to schedule two cell doses was informed by the current lack of knowledge on optimal implanted cell dose.^{49,50} Because of this and the fact that the maximum dose allowed by the AEMPS at the time of this trial was 40×10^6 ASCs, we decided on a dosage escalation program that called for 20×10^6 in the first injection and 40×10^6 in the second injection (Figure 1) in the first clinical trial (men); owing to the excellent safety profile and to reduce costs, we decided to use only the highest dose in the second clinical trial (women). In addition, magnetic resonance imaging has been shown to be a good tool to evaluate the sphincter; it has not been considered in this phase I-IIa trial, but it could be useful in a phase II trial.

As concerns the clinical improvement evidenced in 37.5% of the men (3/8) and 50% of the women (5/10) and maintained after more than 12 to 15 months of follow-up, it is important to highlight that in the urodynamic study of these patients, no urinary incontinence was found. It should be noted that these patients (>50% decrease on pad test; $P < .05$) reported a subjective improvement of 70% to 80%, and no surgical procedure to correct residual urinary incontinence was considered by the patients. The variability of the pad test depends on several factors such as oral intake, weather, exercise, and so on, thus explaining the positive and negative variation found within a given patient. It is noteworthy that only the differences obtained for these patients of urine-leakage improvement were statistically significant ($P < .05$), so the other nonsignificant difference obtained on improvement or worsening must be secondary to the intrinsic variability of the pad test. Anyway, in all cases, these patients are the patients that showed improvement in the urodynamic test.

For us, is difficult to know if the difference of results between both trials is due to the cellular dose, to the type of incontinence, or to other factors (sex of the patients, age, etc.); it is important to consider that we are working a medicine live, and its manipulation implies a learning curve. In addition, the average age of the patients included in the men's trial exceeded 60 years, and it is well known that stem cells have decreased abilities with age (aging).⁵¹

There are many issues surrounding the mechanism by which stem cells act. Stem cells are known for their ability to differentiate into several cell lines, thus giving rise to their theoretical ability to restore damaged tissue. Furthermore, their paracrine effect has become more and more relevant over the last years; ASCs provide soluble mediators like cytokines and growth factors, which have effects upon cytoprotection, angiogenesis, tissue repair, and the normalization of the extracellular matrix and relief from inflammation.⁵² If we can continue in this direction and answer all these questions, we will be poised to offer incontinence therapy that is safe, efficient, effective, minimally invasive, and lasting. According to this idea, in recent years, the secretome of ASCs for the treatment of urinary incontinence has been analyzed, and this way of working could inhibit some of the problems associated with the route of application, cell expansion/dose, and so on; however, despite appearing promising, it is an almost unknown treatment.⁵³

Therefore, we can state that ASC therapy for urinary incontinence after radical prostatectomy or female SUI is safe and feasible, although its efficacy is relative, at least with the doses used in our trial and with a limited number of patients. We may conclude that 20 million ASCs are probably insufficient, although some patients had an obvious response; 40 million ASCs might be therapeutic for mild to moderate incontinence and have relative efficacy for moderate or severe incontinence. In any event, more trials to investigate the best cell dose are required.

5 | CONCLUSION

As our main conclusion, we can state that ASC therapy is a feasible and safe therapy from all points of view for the treatment of urinary incontinence in men and women, a finding that was the main objective of our trial. Both the direct repair effect and the paracrine repair effect of ASCs require further trials to achieve safety and efficacy for stem-cell therapy.

ACKNOWLEDGMENTS

We thank Oliver Shaw for editing a final draft of the manuscript for aspects related to usage, flow, and style. The trials in this work are registered at www.ClinicalTrials.gov (NCT01799694 and NCT01804153). This study was supported by grants from the Spanish Ministry of Health and Consumer Affairs (TRA002 and EC10/351), the RETIC Program of ISCIII-FEDER (RD16/0011/0013 and RD16/0011/0029), and the regional program of Comunidad de Madrid, cofounded by the European Social Fund and the European Regional Development Fund (S2017/BMD-3692-AVANCELL).

CONFLICT OF INTEREST

Mariano Garcia-Arranz declared inventor or patent holder, consultant/advisory role, and expert testimony for Biosurgery, an educational company. Damian Garcia-Olmo declared inventor or patent holder and consultant/advisory role for Biosurgery, an educational company, is a member of the advisory board of Tigenix S.A.U., and has received fees from Takeda. The other authors indicated no potential conflicts of interest.

AUTHOR CONTRIBUTIONS

M.G.-A., S.A.-G.: conception and design, financial support, administrative support, collection of data, data analysis and interpretation, manuscript writing, and final approval of manuscript; P.F.-P.: collection of data, provision of patients, and final approval of manuscript; E.B., M.E.F.-S.: provision of study material and final approval of manuscript; J.D.S.: data analysis and final approval of manuscript; D.G.-O.: conception and design, financial support, data analysis and interpretation, and final approval of manuscript.

DATA AVAILABILITY STATEMENT

The data that support the findings of this study are available on request from the corresponding author.

ORCID

Mariano Garcia-Arranz  <https://orcid.org/0000-0002-6266-9055>

REFERENCES

- Madersbacher S, Marberger M. Is transurethral resection of the prostate still justified? *Br J Urol.* 1999;83:227-237.
- Tubaro A, Carter S, Hind A, et al. A prospective study of the safety and efficacy of suprapubic transvesical prostatectomy in patients with benign prostatic hyperplasia. *J Urol.* 2001;166:172-176.
- Nam RK, Herschorn S, Loblaw DA, et al. Population based study of long-term rates of surgery for urinary incontinence after radical prostatectomy for prostate cancer. *J Urol.* 2012;188:502-506.
- Arcangeli S, Pinzi V, Arcangeli G. Epidemiology of prostate cancer and treatment remarks. *World J Radiol.* 2012;4:241-246.
- Capobianco G, Madonia M, Morelli S, et al. Management of female stress urinary incontinence: a care pathway and update. *Maturitas.* 2018;109:32-38.
- Mckellar K, Abraham N. Prevalence, risk factors, and treatment for women with stress urinary incontinence in a racially and ethnically diverse population. *NeuroUrol Urodyn.* 2019;38:934-940.
- Zhou HH, Shu B, Liu TZ, Wang XH, Yang ZH, Guo YL. Association between parity and the risk for urinary incontinence in women: a meta-analysis of case-control and cohort studies. *Medicine (Baltimore).* 2018;97:e11443.
- Zwolsman S, Kastelein A, Daams J, et al. WOMEN-UP Consortium: <http://www.women-up.eu/consortium/>. Heterogeneity of cost estimates in health economic evaluation research. A systematic review of stress urinary incontinence studies. *Int Urogynecol J.* 2019;30:1045-1059.
- Downing A, Wright P, Hounsborne L, et al. Quality of life in men living with advanced and localised prostate cancer in the UK: a population-based study. *Lancet Oncol.* 2019;20:436-447.
- Groutz A, Blaivas JG, Chaikin DC, et al. The pathophysiology of post-radical prostatectomy incontinence: a clinical and video urodynamic study. *J Urol.* 2000;163:1767-1770.
- Chao R, Mayo ME. Incontinence after radical prostatectomy: detrusor or sphincter causes. *J Urol.* 1995;154:16-18.
- Bauer RM, Gozzi C, Hübner W, et al. Contemporary management of postprostatectomy incontinence. *Eur Urol.* 2011;59:985-996.
- Trost L, Elliot DS. Male stress urinary incontinence: a review of surgical treatment options and outcomes. *Adv Urol.* 2012;2012:287489.
- Van der Aa F, Drake MJ, Kasyan GR, Petrolekas A, Cornu J-N, Young Academic Urologists Functional Urology Group. The artificial urinary sphincter after a quarter of a century: a critical systematic review of its use in male non-neurogenic incontinence. *Eur Urol.* 2013;63:681-689.
- Anger JT, Saigal CS, Madison R, Joyce G, Litwin MS, Urologic Diseases of America Project. Increasing costs of urinary incontinence among female Medicare beneficiaries. *J Urol.* 2006;176:247-251.
- Kim JH, Seol YJ, Ko IK, et al. 3D bioprinted human skeletal muscle constructs for muscle function restoration. *Sci Rep.* 2018;8:12307.
- Simples EN, Vale P, Soker S, et al. Acellular urethra bioscaffold: decellularization of whole urethras for tissue engineering applications. *Sci Rep.* 2017;7:41934.
- Fazeli Z, Faramarzi S, Ahadi A, Omrani MD, Ghaderian SMH. Efficiency of mesenchymal stem cells in treatment of urinary incontinence: a systematic review on animal models. *Regen Med.* 2019;14:69-76.
- Liu X, Wang S, Wu S, et al. Exosomes secreted by adipose-derived mesenchymal stem cells regulate type I collagen metabolism in fibroblasts from women with stress urinary incontinence. *Stem Cell Res Ther.* 2018;9:159.
- Wu R, Huang C, Wu Q, et al. Exosomes secreted by urine-derived stem cells improve stress urinary incontinence by promoting repair of pubococcygeus muscle injury in rats. *Stem Cell Res Ther.* 2019;10:80.

21. Boissier R, Karsenty G. Cellular therapy and urinary incontinence. *Prog Urol*. 2012;22:454-461.
22. Gimble J, Guilak F. Adipose-derived adult stem cells: isolation, characterization and differentiation potential. *Cytotherapy*. 2003;5:362-369.
23. Zuk PA, Zhu M, Mizuno H, et al. Multilineage cells from human adipose tissue: implications for cell-based therapies. *Tissue Eng*. 2001;7:211-228.
24. Bacou F, el Andaloussi RB, Daussin PA, et al. Transplantation of adipose tissue-derived stromal cells increases mass and functional capacity of damaged skeletal muscle. *Cell Transplant*. 2004;13:103-311.
25. Gotoh M, Yamamoto T, Kato M, et al. Regenerative treatment of male stress urinary incontinence by periurethral injection of autologous adipose-derived regenerative cells: 1-year outcomes in 11 patients. *Int J Urol*. 2014;21:294-300.
26. Kuismanen K, Sartoneva R, Haimi S, et al. Autologous adipose stem cells in treatment of female stress urinary incontinence: results of a pilot study. *STEM CELLS TRANSLATIONAL MEDICINE*. 2014;3:936-941.
27. Garcia-Olmo D, Garcia-Arranz M, Herreros D, et al. A phase I clinical trial of the treatment of Crohn's fistula by adipose mesenchymal stem cell transplantation. *Dis Colon Rectum*. 2005;48:1416-1423.
28. Albo ME, Richter HE, Brubaker L, et al. Burch colposuspension versus fascial sling to reduce urinary stress incontinence. *N Engl J Med*. 2007;356:2143-2145.
29. Roger RG. What's best in the treatment of stress urinary incontinence? *N Engl J Med*. 2010;362:2124-2125.
30. Kadono Y, Hohara T, Kawaguchi S, et al. Investigating the mechanism underlying urinary continence recovery after radical prostatectomy: effectiveness of a longer urethral stump to prevent urinary incontinence. *BJU Int*. 2018;122:456-462.
31. Deng DY, Rutman M, Raz S, Rodríguez LV. Presentation and management of major complications of midurethral slings: are complications under-reported? *NeuroUrol Urodyn*. 2007;26:46-52.
32. Olsen AL, Smith VJ, Bergstrom JO, et al. Epidemiology of surgically managed pelvic organ prolapse and urinary incontinence. *Obstet Gynecol*. 1997;89:501-506.
33. Gungorduk K, Celebi I, Ark C, et al. Which type of mid-urethral sling procedure should be chosen for treatment of stress urinary incontinence with intrinsic sphincter deficiency? Tension-free vaginal tape or transobturator tape. *Acta Obstet Gynecol Scand*. 2009;88:920-926.
34. Staack A, Rodríguez LV. Stem cells for the treatment of urinary incontinence. *Curr Urol Rep*. 2011;12:41-46.
35. Thacker H, Sharma AK. Regenerative medicine based applications to combat stress urinary incontinence. *World J Stem Cells*. 2013;5:112-123.
36. Kim J, Lee S, Song Y, et al. Stem cell therapy in bladder dysfunction: where are we? And where do we have to go? *Biomed Res Int*. 2013;2013:930713.
37. Vaegler M, Lenis A, Daum L, et al. Stem cell therapy for voiding and erectile dysfunction. *Nat Rev Urol*. 2012;9:435-447.
38. Garcia-Olmo D, Garcia-Arranz M, Herreros D, et al. A phase I clinical trial of the treatment of Crohn's fistula by adipose mesenchymal stem cell transplantation. *Dis Colon Rectum*. 2005;48:1416-1423.
39. Lin CS, Lue TF. Stem cell therapy for stress urinary incontinence: a critical review. *Stem Cells Dev*. 2012;21:834-843.
40. Vilalta M, Dégano IR, Bagó J, et al. Biodistribution, long-term survival and safety of human adipose tissue-derived mesenchymal stem cells transplanted in nude mice by high sensitivity non-invasive bioluminescence imaging. *Stem Cells Dev*. 2008;17:993-1003.
41. Garcia S, Bernad A, Martín MC, et al. Pitfalls in spontaneous in vitro transformation of human mesenchymal stem cells. *Exp Cell Res*. 2010;316:1648-1650.
42. Sensebé L, Fleury-Capelleso S. Biodistribution of mesenchymal stem/stromal cells in a preclinical setting. *Stem Cells Int*. 2013;2013:678063.
43. Wallerstedt A, Carlsson S, Nilsson AE, et al. Pad use and patient reported bother from urinary leakage after radical prostatectomy. *J Urol*. 2012;187:196-200.
44. Thüroff JW, Abrams P, Andersson KE, et al. EAU guidelines on urinary incontinence. *Eur Urol*. 2011;59:387-400.
45. Timmermans L, Falez F, Melot C, et al. Validation of use of the International Consultation on Incontinence Questionnaire-Urinary Incontinence-Short Form (ICIQ-UI-SF) for impairment rating: a transversal retrospective study of 120 patients. *NeuroUrol Urodyn*. 2013;32:974-979.
46. Pinto AM, Kuppermann M, Nakagawa S, et al. Comparison and correlates of three preference-based health-related quality-of-life measures among overweight and obese women with urinary incontinence. *Qual Life Res*. 2011;20:1655-1662.
47. Matza LS, Zyczynski TM, Bavendam T. A review of quality-of-life questionnaires for urinary incontinence and overactive bladder: which ones to use and why? *Curr Urol Rep*. 2004;5:336-342.
48. Montague DK. Artificial urinary sphincter: long term results and patient satisfaction. *Adv Urol*. 2012;2012:835290.
49. Iwasaki H, Kawamoto A, Ishikawa M, et al. Dose-dependent contribution of CD34-positive cell transplantation to concurrent vasculogenesis and cardiomyogenesis for functional regenerative recovery after myocardial infarction. *Circulation*. 2006;113:1311-1325.
50. Garcia-Arranz M, Gómez-Pinedo U, Hardisson D, et al. Histopathological analysis of human specimens removed from injection area of expanded adipose-derived stem cells. *Histopathology*. 2010;56:979-982.
51. Shan X, Roberts C, Kim EJ, Brenner A, Grant G, Percec I. Transcriptional and cell cycle alterations mark aging of primary human adipose-derived stem cells. *STEM CELLS*. 2017;35:1392-1401.
52. García-Gómez I, Elvira G, Zapata AG, et al. Mesenchymal stem cells: biological properties and clinical applications. *Expert Opin Biol Ther*. 2010;10:1453-1468.
53. Mastro M, Lin H, Lee T. Enhancing the efficacy of mesenchymal stem cell therapy. *World J Stem Cells*. 2014;6:82-93.

SUPPORTING INFORMATION

Additional supporting information may be found online in the Supporting Information section at the end of this article.

How to cite this article: Garcia-Arranz M, Alonso-Gregorio S, Fontana-Portella P, et al. Two phase I/II clinical trials for the treatment of urinary incontinence with autologous mesenchymal stem cells. *STEM CELLS Transl Med*. 2020;9:1500-1508. <https://doi.org/10.1002/sctm.19-0431>