

Assessment of left atrial appendage function during sinus rhythm in patients with obstructive sleep apnea

Mustafa Gökhan Vural, Süha Çetin¹, Hüseyin Gündüz, Özge Özcan Abacıoğlu², Ramazan Akdemir, Hikmet Fırat³, Ekrem Yeter²

Department of Cardiology, Faculty of Cardiology, Sakarya University; Sakarya-Turkey

¹Clinic of Cardiology Koru Private Hospital; Ankara-Turkey

²Clinics of Cardiology and ³Pulmonology, Ministry of Health Dışkapı Yıldırım Beyazıt Research and Educational; Ankara-Turkey

ABSTRACT

Objective: Obstructive sleep apnea (OSA) is associated with thromboembolic events. Compromised left atrial appendage (LAA) function due to left ventricular (LV) performance abnormality, often present in patients with OSA, may play an important role. The purpose of this study is to evaluate LV and LAA mechanical functions during sinus rhythm (SR) in patients with OSA.

Methods: LV and LAA functions were assessed in 43 OSA patients and compared with that of 20 control patients in SR. Tissue Doppler velocities of the LAA apex and emptying velocities (EV) of LAA were obtained on parasternal short-axis view.

Results: The baseline clinical characteristics were similar except for AHI (apnea-hypopnea index), minimal SaO₂, mean SaO₂, hypertension, and body-surface area. Most of the LV echocardiographic parameters significantly deteriorated in OSA patients in comparison with those in the control group. LAA EV, LAA systolic relaxation velocity (S_M), LAA early-diastolic velocity (E_M), LAA contraction velocity (A_M), left atrial (LA) minimum volume index, LA ejection fraction, LA conduit volume index, and LA reservoir volume index were lower in OSA patients compared with those in the control group (p<0.05). LAA A_M was negatively correlated with AHI and the ratio of peak early diastolic flow velocity (E) to early-diastolic (E') and positively correlated with LA conduit volume (p<0.05). Multiple predictors for LAA A_M were AHI, presence of diastolic dysfunction, and E/E' values (p<0.05).

Conclusion: LAA mechanical function is significantly depressed in patients with OSA and SR. LAA dysfunction may predispose these patients to thromboembolic events. The evaluation of LAA mechanical function by tissue Doppler study using transthoracic echocardiography (TTE) may become an alternative for routine work-up in OSA patients. (*Anatol J Cardiol* 2016; 16: 34-41)

Keywords: diastolic dysfunction, left atrial appendage, obstructive sleep apnea, sinus rhythm, tissue Doppler echocardiography

Introduction

Obstructive sleep apnea (OSA) is a highly prevalent disorder that is characterized by repetitive episodes of airflow cessation (apnea) or reduction (hypopnea) despite persistent thoracic and abdominal respiratory efforts during sleep. OSA is generally defined as five or more apneas and/or hypopneas per hour of sleep [apnea-hypopnea index (AHI) >5] that is assessed by a cardiorespiratory or full polysomnography (PSG) recording (1).

Clinical and epidemiological data suggests an independent association between OSA and mainly systemic hypertension but also with pulmonary hypertension and other cardiovascular diseases such as coronary artery disease, cardiac arrhythmias, heart failure, and sudden cardiac death (2). OSA is also found to

be an independent risk factor for thromboembolic events (3). Left atrial (LA) function, especially that of the LA appendage (LAA), may be one of the most important determinants of thromboembolic events because LAA is almost always the site of thrombus formation (4, 5).

Transthoracic echocardiography (TTE) can provide information on LAA function (4). LAA relaxation, for example, is impaired with aging and accompanied by early diastolic left ventricular (LV) dysfunction and chronic overload of the LA (6). Tissue Doppler imaging (TDI) is an ideal tool for evaluating regional myocardial function and has been validated on regional left ventricular and left atrial function assessment (7-9). LAA mechanics are influenced by changes in LV function. LAA early diastolic flows are related to LV contraction and relaxation

Address for Correspondence: Dr. Süha Çetin, Koru Hastanesi Kardiyoloji Kliniği, Kızılırmak Mah., 1436/2. Sokak, Ankara-Türkiye

Phone: +90 312 444 66 62 Fax: +90 312 287 98 98 E-mail: ceramos3@gmail.com

Accepted Date: 29.12.2014 **Available Online Date:** 30.01.2015

© Copyright 2016 by Turkish Society of Cardiology - Available online at www.anatoljcardiol.com
DOI:10.5152/akd.2015.5751



(10). Based on these considerations, LAA function may deteriorate because of LV performance abnormality, which is often present in patients with OSA (11, 12). Proposed mechanisms that affect LV performance in patients with OSA include several mechanical, neurohumoral, inflammatory, endothelial, and oxidative effects (13). The purpose of this study is to evaluate LV and LAA mechanical functions in patients with OSA and sinus rhythm (SR).

Methods

The study cohort consisted of 63 patients recruited from the Sleep Disorders Center of Dışkapı Yıldırım Beyazıt Research and Educational Hospital. These patients were referred for a clinically indicated sleep study. Data on demographic characteristics, sleep and medical history, and medication use were obtained with the use of a standardized questionnaire before the overnight polysomnogram. The sleep questionnaire included questions on history of snoring and the relationship of snoring with position, choking, witnessed apnea, sleep fragmentation, nocturia, night sweating, morning tiredness, and headache. The Epworth Sleepiness Scale was used to report subjective daytime sleepiness. Data regarding risk factors for coronary artery disease included a history of hypertension, diabetes mellitus, or hyperlipidemia reported by the patient on the baseline medical questionnaire, noted in the file or both. Smoking habit was also documented on the routine baseline questionnaire. The clinical evaluation of patients involved internal medicine, neurologic, and psychiatric clinical reviews by physicians. Body mass index (BMI), neck circumference, and craniofacial measurements (overjet, overbite, position of mandible and maxilla and soft palate, and Mallampati scores) were obtained. Patients with sleep disorders other than OSA such as central sleep apnea, periodic limb movement syndrome, or narcolepsy were excluded from the study. AHI ≥ 5 was diagnosed as OSA and AHI < 5 was diagnosed as non-OSA. Twenty-four patients with severe OSA (defined as AHI ≥ 30) (age, 43.1 ± 11.0 years; mean AHI, 60.9 ± 21.3 ; 17 men and 7 women), 19 patients with mild-to-moderate OSA (defined as AHI 5-29) (age, 41.4 ± 12.6 years; AHI, 14.9 ± 8.3 ; 12 men and 5 women), and 20 control subjects (age, 42.9 ± 13.1 years; AHI, 2.7 ± 1.0 ; 11 men and 9 women) were studied.

Normal sinus rhythm was confirmed by 12 lead resting electrocardiography (ECG) (upright P waves in lead II and biphasic in lead V1 before every QRS complex). Patients who had a history of permanent or paroxysmal atrial fibrillation (AF), coronary artery disease, uncontrolled hypertension, or diabetes mellitus (patients with a systolic blood pressure value > 140 mm Hg and diastolic blood pressure value > 90 mm Hg and glycated hemoglobin $> 6.4\%$), pericarditis, valvular heart disease (mitral regurgitation of higher degree than trivial, aortic regurgitation, any degree of valve stenosis, previous valve surgery), pulmonary emboli, cardiomyopathies, pulmonary hypertension (mean pulmonary artery pressure > 25 mm Hg), Grade III and IV diastolic

dysfunction, atrioventricular or intraventricular conduction disturbance on the electrocardiogram, abnormal thyroid function, abnormal serum electrolyte values, patients with implanted pacemakers or those receiving antiarrhythmic medications, and poor echocardiographic imaging were also excluded from the study. A written consent was obtained from all patients and our Local Ethical Committee approved the study.

Polysomnography

All participants underwent full-night polysomnography using the compumedics E-series system (Compumedics®, Melbourne, Victoria, Australia). The PSG recordings included 6-channels electroencephalography, 2-channels electrooculography, 2-channels submental electromyography, oxygen saturation by an oximeter finger probe, respiratory movements via chest and abdominal belts, airflow both via nasal pressure sensor and oronasal thermistor, electrocardiography, and leg movements via both tibial anterolateral electrodes. Sleep stages and respiratory parameters were scored according to the standard criteria of the American Academy of Sleep Medicine (AASM). Based on the guidelines of the AASM published in 2007, apnea is defined as a $\geq 90\%$ decrease in airflow persisting for at least 10 s relative to the basal amplitude. Hypopnea is defined as a $\geq 50\%$ decrease in the airflow amplitude relative to the baseline value with an associated oxygen desaturation or arousal of $\geq 3\%$, persisting for at least 10 s. AHI was calculated based on the following formula: total number of obstructive apneas + hypopneas / total sleep time (h).

Echocardiography

A complete transthoracic echocardiographic evaluation was performed using commercially available ultrasonographic equipment (Phillips ie33 echocardiography system, Phillips Medical System, Bothel, Washington, USA) according to the recommendations of the American Society of Echocardiography (14). All echocardiographic examinations were recorded and analyzed offline at study completion by an independent experienced cardiologist who was blinded with respect to patients' clinical characteristics. A 1-lead ECG was recorded continuously. TTE examinations included M-mode, two-dimensional, Doppler flow assessments, and pulsed wave tissue Doppler imaging (PuWa-TDI) measurements (15-17). LV volumes, LV ejection fraction (LVEF), posterior wall (PW), and interventricular septal thickness (IVS) were determined. LA volumes were estimated using the modified Simpson method and indexed to body surface area. LV mass was calculated and indexed to body surface area. LV diastolic performance was evaluated using the pulsed wave Doppler. All Doppler measurements are given as the average values of 10 consecutive cardiac cycles. LV diastolic inflow velocities were obtained from the apical four-chamber view by placing the sample volume at the level of the mitral valve tip. Peak early-diastolic flow velocity (E), peak atrial filling velocity (A), and mitral deceleration time (DT) were measured. PuWa-

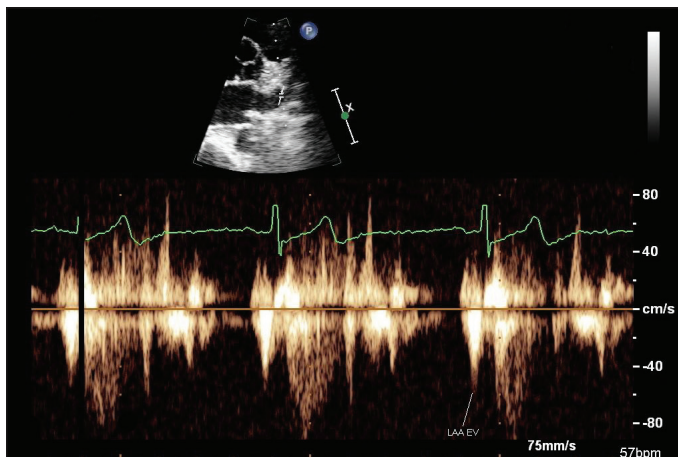


Figure 1. Left atrial appendage (LAA) pulsed wave Doppler velocities obtained in sinus rhythm from parasternal short axis
EV - LAA emptying velocity

TDI velocities of longitudinal mitral annular motion were recorded at the septal mitral annular borders. The peak systolic (S'), early diastolic (E'), and late-diastolic (A') PuWa-TDI velocities over the mitral septal annulus were measured, and the ratio of E/E' for septal wall was calculated. For the assessment and grading of global LV diastolic function, E/A ratio, DT, and E/E' ratio was considered (18). LV volumes were calculated at end-systole (largest dimension or end of T wave) and end-diastole (smallest dimension or onset of QRS complex) using the modified Simpson method. Tissue Doppler velocities of the LAA apex and emptying velocities (EV) of LAA were measured on the parasternal short axis. LAA blood velocities were obtained from 63 patients by placing the pulsed Doppler cursor at the proximal third of the LAA cavity after necessary gain and angle adjustments. Biphasic waves subsequent to the ECG-P wave were termed LAA emptying velocity (EV) (Fig. 1). The peak velocity LAA EV was measured and averaged for ten consecutive cardiac cycles. Sample volume was chosen 4 mm. For PuWa-TDI analysis, sample volume was positioned at the apex of the LAA. Care was taken to keep the cursor as parallel as possible to the LAA apex. A triphasic flow pattern was recorded, which included LAA systolic relaxation velocity (S_M), LAA early-diastolic velocity (E_M), and LAA contraction velocity (A_M) (7). The initial early diastolic negative velocity just before the ECG-P wave was termed LAA E_M , and the following biphasic negative emptying and positive filling velocities were termed LAA A_M and LAA S_M , respectively (Fig. 2). The peak velocities of LAA A_M , LAA E_M , and LAA S_M were measured and averaged for 10 consecutive cardiac cycles.

Statistical analysis

All statistical analyses were performed with SPSS version 16 (SPSS, Inc., Chicago, Illinois, USA). The Shapiro–Wilks normality test was used to determine whether distribution continuous variables have normal distributions. One-way analysis of variance (ANOVA) and the Bonferroni test were used to compare groups for continuous variables. Comparison of categorical

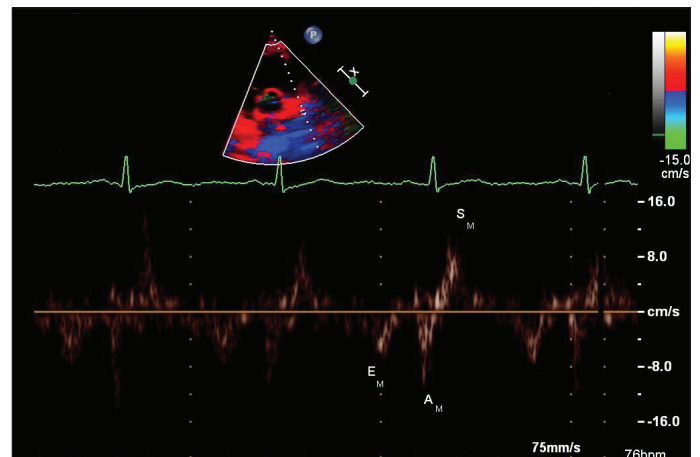


Figure 2. Left atrial appendage (LAA) tissue Doppler velocities obtained in sinus rhythm from parasternal short axis
 E_M , LAA - early-diastolic velocity; A_M , LAA - contraction velocity; S_M , LAA - systolic relaxation velocity

variables between groups was performed using the Chi-square test or Fisher's exact test. Correlations between AHI and LAA functions were assessed by using Pearson correlation analysis. Multiple logistic regression analysis was used to determine risk factors on LAA A_M (19). Continuous variables were expressed as mean \pm standard deviation (mean \pm SD), and categorical variables were expressed as numbers and percentages. A p value of <0.05 was considered statistically significant.

Results

Table 1 shows the baseline clinical characteristics of the study population. AHI and body surface area were significantly higher in severe OSA patients than in mild-to-moderate OSA patients and the control group. Mild-to-moderate OSA patients had higher AHI and body surface area values than in the control group ($p<0.05$). Minimal SaO_2 and mean SaO_2 values were lower in severe OSA patients compared with those in mild-to-moderate OSA patients and the control group ($p<0.05$). These values were also lower in mild-to-moderate OSA patients compared with those in the control group ($p<0.05$). The diagnosis of hypertension was found to be more frequent in severe and mild-to-moderate OSA patients compared with that in the control group ($p<0.05$).

Left ventricular echocardiography characteristics are shown in Table 2. LV mass index, E mitral deceleration time, E/E' ratio, LV end-diastolic volume, and LV stroke volume were higher in severe OSA patients compared with those in mild-to-moderate OSA patients and the control group, and E/A ratio and septal E' were found to be lower, respectively ($p<0.05$). A velocity and diastolic dysfunction values were higher in severe OSA patients compared with those in the control group, and E velocity and LV ejection fraction were found to be lower, respectively ($p<0.05$). A velocity, E/E' ratio, diastolic dysfunction values, LV stroke volume were higher in mild-to-moderate OSA patients compared with those in the control group and E velocity, E/A ratio and septal E' were found to be lower, respectively ($p<0.05$).

Table 1. Baseline clinical and sleep characteristics

Variables	Control group/non-OSA (n=20)	Mild-to-moderate OSA (n=19)	Severe OSA (n=24)	P
Age, years	42.9±13.1	41.4±12.6	43.1±11.1	0.885
Men/women	12/8	12/7	13/11	0.830
AHI, events/h	2.7±1.0	14.9±8.3 ^a	60.9±21.3 ^{a, b}	<0.001
Min SaO ₂ , (%)	84.9±6.6	84.4±5.9	75.7±9.7 ^{a, b}	<0.001
Mean SaO ₂ , (%)	92.7±2.1	92.9±2.0	87.9±7.2 ^{a, b}	0.004
Heart rate, bpm	71.4±5.1	72.8±5.5	69.3±6.6	0.151
Systolic blood pressure, mm Hg	126.7±5.4	127.3±6.6	129.7±6.0	0.195
Diastolic blood pressure, mm Hg	80.7±7.3	80.2±5.1	78.9±6.5	0.633
Diabetes mellitus, (n)	(1) 5%	(1) 5%	(2) 8%	0.812
Hyperlipidemia, (n)	(9) 45%	(9) 47%	(15) 62%	0.446
Hypertension, (n)	(5) 25%	(11) 57% ^a	(15) 62% ^a	0.031
Current smoking, (n)	(11) 55%	(10) 52%	(13) 54%	0.817
Body mass index, kg/m ²	26.2±1.0	26.4±1.1 ^a	26.8±1.2	0.307
Body surface area, m ²	1.84±0.10	1.83±0.06	1.93±0.07 ^{a, b}	<0.001
Beta-blocker, (n)	(1) 5%	(4) 21%	(7) 29%	0.122
Calcium channel blocker, (n)	(1) 5%	(4) 21%	(5) 20%	0.273
RAAS blockade, (n)	(4) 20%	(6) 31%	(8) 33%	0.585

AHI - apnea-hypopnea index; OSA - obstructive sleep apnea; RAAS - renin-angiotensin-aldosterone system; bpm-beats per minute; mm Hg - millimeters of mercury; kg/m² - kilogram per square meter; ^avs. control; ^bvs. mild-to-moderate

Table 2. Comparison of left ventricular echocardiographic characteristics

Variables	Control group (n=20)	Mild-to-moderate OSA (n=19)	Severe OSA (n=24)	P
LV mass index (g/m ²)	83.5±4.1	83.4±4.4	86.6±2.0 ^{a, b}	0.006
IVS, mm	9.5±1.1	9.8±1.2	10.1±1.1	>0.05
PW, mm	8.9±0.9	9.1±1.1	9.4±1.0	>0.05
E velocity, cm/s	94.0±7.6	81.1±9.4 ^a	81.1±9.4 ^a	<0.001
A velocity, cm/s	61.8±8.5	75.4±13.8 ^a	81.7±19.5 ^a	<0.001
E/A ratio	1.3±0.1	1.1±0.2 ^a	0.9±0.3 ^{a, b}	<0.05
E mitral deceleration time, ms	227.8±18.1	234.9±25.2	249.8±14.4 ^{a, b}	0.001
E/E' ratio	7.9±1.0	8.9±0.8 ^a	10.7±1.1 ^{a, b}	<0.001
Septal E', cm/s	11.9±1.5	9.1±1.6 ^a	6.8±1.7 ^{a, b}	<0.001
Septal A', cm/s	8.9±0.9	8.4±1.1	8.5±1.1	0.272
Septal S, cm/s	8.0±0.8	8.1±0.5	7.9±0.9	0.773
Diastolic dysfunction, (n)	Grade I (5) 25% Grade II (3)15%	Grade I (8) 42.1% ^a Grade II (9) 47.4% ^a	Grade I (8) 33.3% ^a Grade II (14)58.3% ^a	<0.001 <0.001
LV end-diastolic volume, mL	88.2±3.3	88.5±4.6	93.3±5.2 ^{a, b}	<0.001
LV end-systolic volume, mL	34.9±1.9	35.0±1.7	35.9±3.2	0.346
LV Stroke volume, mL	69.6±5.2	66.6±4.9 ^a	62.3±6.6 ^{a, b}	<0.001
LV ejection fraction,%	65.5±2.6	64.9±2.0	63.7±2.5 ^a	<0.042

LV - left ventricle; OSA - obstructive sleep apnea; mm - millimeter; cm/s - centimeter per second; mL - milliliter; ^avs. control; ^bvs. mild-to-moderate. Oneway ANOVA test

A comparison of left atrial and left atrial appendage echocardiographic characteristics is shown in Table 3. LAA EV, LAA S_M, LAA E_M, LAA A_M, and LA reservoir volume index were lower in severe OSA patients compared with those in mild-to-moderate OSA patients and the control group, and LA minimum volume

index was higher, respectively (p<0.05). LAA A_M was lower in severe and mild-to-moderate OSA patients compared with that in the control group. LA maximum volume index was higher in severe and mild-to-moderate OSA compared with that in the control group (p<0.05). LA ejection fraction was lower and LA

Table 3. Comparison of left atrial and left atrial appendage echocardiographic characteristics

Variables	Control Subjects (n=20)	Mild-to-Moderate OSA (n=19)	Severe OSA (n=24)	P
LAA EV, cm/s	75.2±6.7	73.2±9.6	63.5±17.1 ^{a, b}	0.006
LAA SM, cm/s	10.0±0.9	8.1±1.1 ^a	6.3±0.9 ^{a, b}	<0.001
LAA EM, cm/s	14.0±1.6	10.0±2.8 ^a	6.8±2.2 ^{a, b}	<0.001
LAA AM, cm/s	13.6±0.7	11.6±0.5 ^a	11.2±0.3 ^{a, b}	<0.001
LA maximum volume index, mL/m ²	38.5±4.0	45.3±7.2 ^a	49.2±9.9 ^a	<0.001
LA minimum volume index, mL/m ²	18.3±3.9	23.5±2.8 ^a	34.2±7.1 ^{a, b}	<0.001
LA ejection fraction, %	47.9±8.9	43.1±11.3	37.9±11.4 ^a	0.012
LA conduit volume index, mL/m ²	51.0±7.2	46.4±11.3	43.2±9.3 ^a	0.030
LA reservoir volume index, mL/m ²	20.2±4.3	21.8±8.0	15.0±7.0 ^{a, b}	0.004

EV - emptying velocity; LA - left atrium; LAA - left atrial appendage; OSA - obstructive sleep apnea; cm/s - centimeter per second; mL/m²-milliliter per square meter; ^avs. control; ^bvs. mild-to-moderate. Oneway ANOVA test

Table 4. Correlation of LAA AM with other parameters in the OSA group

Variables	Mild-to-Moderate OSA (n=19)		Severe OSA (n=24)		All OSA Population (n=43)	
	r	P	r	P	r	P
AHI, events/h	-0.697	0.001	0.056	0.796	-0.442	0.003
Age, years	0.125	0.610	0.210	0.443	-0.029	0.853
Body-mass index, kg/m ²	-0.225	0.354	0.107	0.620	-0.126	0.419
E/E'	-0.496	0.031	0.315	0.134	-0.354	0.02
LV mass index, g/m ²	-0.122	0.618	0.189	0.377	-0.228	0.141
LA maximum volume index, mL/m ²	-0.399	0.091	0.053	0.807	-0.236	0.128
LA conduit volume index, mL/m ²	0.561	0.012	-0.195	0.162	0.283	0.066
LA reservoir volume index, mL/m ²	-0.237	0.329	0.113	0.599	0.099	0.530
LAA Emptying velocity, cm/s	-0.270	0.264	0.054	0.802	0.076	0.629
LAA AM	0.424	0.700	-0.244	0.251	0.109	0.487
LV EF, %	-0.021	0.930	-0.154	0.472	0.048	0.760

AHI - apnea-hypopnea index; AM - contraction velocity; LA - left atrium; LAA - left atrial appendage; LV - left ventricle; OSA - obstructive sleep apnea; kg/m² - kilogram per square meter; mL/m² - milliliter per square meter; cm/s - centimeter per second. Pearson Correlation Analysis

Table 5. Results of multiple logistic regression analysis for LAA A_M

Variables	OR	95% CI		P
		Lower	Upper	
AHI, event/h	1.90	1.42	2.56	<0.05
Hypertension	1.14	0.93	1.38	0.430
Presence of diastolic dysfunction	1.32	1.09	1.61	<0.05
E/E'	1.38	1.03	1.85	<0.05
LV EF, %	0.95	0.90	1.01	0.767
LAA A _M	0.85	0.67	1.08	0.314
LA EF, %	0.86	0.69	1.06	0.350

AHI - apnea-hypopnea index; A_M - contraction velocity; EF - ejection fraction; LA - left atrium; LV - left ventricle; OSA - obstructive sleep apnea. Multiple logistic regression analysis

conduit volume index was higher in severe OSA patients compared with those in the control group ($p<0.05$). LAA S_M and LAA E_M were lower and LA minimum volume was higher in mild-to-moderate OSA patients than in the control group ($p<0.05$).

Table 4 shows the correlation of LAA A_M with other parameters in the OSA group. LAA A_M was negatively correlated with AHI and LV filling pressure and positively correlated with LA conduit volume index ($p<0.05$).

The multiple predictors for LAA A_M were AHI, presence of diastolic dysfunction, and E/E' values (Table 5).

Discussion

In the present prospective study it was found that LAA EV and tissue velocities were significantly decreased in patients with OSA and SR compared with those in the control group. The multiple predictors for LAA A_M were AHI, presence of diastolic dysfunction, and E/E' values.

OSA has been found to be an independent risk factor for thromboembolic events in large epidemiological studies (3). More than half of the patients hospitalized with stroke suffer from sleep-disordered breathing, and 5%-10% of patients with newly diagnosed OSA have a history of stroke (20).

Impaired LAA function was associated with long-term cerebrovascular events in patients with a history of stroke and AF (21). The authors hypothesized that vulnerability to systemic thromboembolism could also be caused by depressed LAA function during SR.

Because it is generally difficult to observe the entire LAA by TTE, LAA function has generally been assessed by transesophageal echocardiography (TEE). Indeed, TEE LAA A_M velocities are lower in patients with AF than in those with SR (22). However, some patients find TEE uncomfortable, and it cannot always be performed in all patients because some refuse to undergo this examination or cannot swallow the TEE probe. Therefore, an alternative method may be required to assess LA or LAA function. Transthoracic tissue Doppler echocardiography could provide a non-invasive physiological analysis of LAA function. In addition, TDI provides a high amplitude signal with a high signal-to-noise ratio, and it is relatively easy to detect signals from the chest wall (5). Thus, this method was chosen to evaluate the LAA parameters in our study. It is well known that TTE LAA $A_M < 13$ cm/s closely correlates with spontaneous echo contrast and < 11 cm/s with thrombus and consequently with increased embolic risk (5). In a study in non-dipper hypertensive patients, LAA filling and ejection flow rates were found to be decreased relative to dipper hypertensive patients and the control group. This finding suggests that maintenance of LAA function prevents potential complications secondary to LAA dysfunction (23). In another study by Asker et al. (24), patients with untreated systemic hypertension and normal left ventricular systolic function in SR were evaluated at baseline and 6 months after treatment with 5 mg/day ramipril, and a significant increase in LAA filling and emptying velocities after treatment was found. It was concluded that the decrease in blood pressure and hemodynamic improvements as a consequence of ramipril therapy resulted in improved LAA function.

Similar to the abovementioned results, we found that LAA A_M values were reduced in patients with OSA and SR in our study. In a multiple logistic regression analysis, LAA A_M was predicted by AHI, presence of diastolic dysfunction, and echocardiographic E/E' value. To the best of our knowledge, this is the first study evaluating LAA function of OSA patients in SR. There are only limited data about the pathophysiological mechanisms in this regard. Some possible explanations may be as follows: Firstly, there is evidence that recurrent hypoxia can directly reduce myocardial contractility (25). Besides, marked reductions in intrathoracic pressure generated during obstructive events could play a significant role in the development of myocyte slippage and contractile dysfunction in such patients (26). The above observations are validated only for ventricular myocardium. The extent to which these results can be extrapolated on LAA contractility requires further investigation. Secondly, similar to our study, there are sufficient data showing that OSA is often associated with diastolic dysfunction (27,

28). Endothelial dysfunction, surges in blood pressure, hypoxia, and hypercapnia with over activation of sympathetic system, increased preload by intermittent negative intrathoracic pressure, and initiation of the inflammatory system contributes to the development of diastolic dysfunction (29). E/E' value, which is used as an index of left ventricular filling pressures, strongly correlates with LV diastolic dysfunction (30-32). Further, we could show increased parameters for LA volume in OSA patients. This finding suggests that an enlargement of the LA is a morphologic expression of diastolic dysfunction (33). Although admittedly nonspecific, it reflects both the duration and the severity of disease (34). In a recent study, we demonstrated by speckle tracking echocardiography (STE) deformation of LA in OSA patients, which may also be due to diastolic dysfunction (35). Using STE, a further study by Karabay et al. (36) clearly showed that LA deformation parameters predict impaired LAA functions and the presence of LAA thrombus in ischemic stroke patients with suspected cardioembolism; however, it is only applicable to patients with SR.

Study limitations

We assume that the small number of patients may be considered as a limitation. Further studies with larger numbers are required to assess the effects of OSA on LAA parameters in patients with SR. In addition, the possibility that these patients may have intermittent atrial fibrillation cannot be excluded, although no patient had atrial fibrillation at the time of TTE. Finally, it is considered that TEE is a better tool for evaluation of LAA function with a high success rate but with its own limitations. LAA function can be evaluated only in a limited patient group with TTE.

Conclusion

Thromboembolic events are not rare in this patient population although SR is mainly preserved. When the literature is considered as a whole, the evidence suggests that OSA is an independent risk factor for such events. LAA dysfunction during AF and also normal SR may be a crucial pathophysiological mechanism in this regard. LAA function measured by transthoracic pulsed wave and tissue Doppler echocardiography may become an alternative for routine work-up in OSA patients with SR.

Conflict of interest: None declared.

Peer-review: Externally peer-reviewed.

Authorship contributions: Concept - M.G.V., S.Ç.; Design - M.G.V., S.Ç.; Supervision - R.A., H.F.; Resource - R.A., H.F.; Materials - Ö.Ö.A., M.G.V.; Data collection &/or processing - Ö.Ö.A.; Analysis &/or interpretation - M.G.V., S.Ç.; Literature search - H.G., E.Y.; Writing - M.G.V., S.Ç.; Critical review - H.G., E.Y.; Other - E.Y.

References

1. Celen YT, Peker Y. Cardiovascular consequences of sleep apnea: I-epidemiology. *Anatol J Cardiol* 2010; 10: 75-80.
2. Somers VK, White DP, Amin R, Abraham WT, Costa F, Culebras A, et al. Sleep apnea and cardiovascular disease: an American Heart Association/American College of Cardiology Foundation Scientific Statement from the American Heart Association Council for High Blood Pressure Research Professional Education Committee, Council on Clinical Cardiology, Stroke Council, and Council on Cardiovascular Nursing. *J Am Coll Cardiol* 2008; 52: 686-717.
3. Barone DA, Krieger AC. Stroke and obstructive sleep apnea: a review. *Curr Atheroscler Rep* 2013; 15: 334.
4. Yoshida N, Okamoto M, Beppu S. Validation of transthoracic tissue Doppler assessment of left atrial appendage function. *J Am Soc Echocardiogr* 2008; 20: 521-6.
5. Uretsky S, Shah A, Bangalore S, Rosenberg L, Sarji R, Canteles DR, et al. Assessment of left atrial appendage function with transthoracic tissue Doppler echocardiography. *Eur J Echocardiogr* 2009; 10: 363-71.
6. Yoshida N, Okamoto M, Nanba K, Yoshizumi M. Transthoracic tissue Doppler assessment of left atrial appendage contraction and relaxation: their changes with aging. *Echocardiography* 2008; 27: 839-46.
7. Bauer F, Verdonck A, Schuster I, Tron C, Eltchaninoff H, Cribier A, et al. Left atrial appendage function analyzed by tissue Doppler imaging in mitral stenosis: effect of afterload reduction after mitral valve commissurotomy. *J Am Soc Echocardiogr* 2005; 18: 934-9.
8. Hatle L, Sutherland GR. Regional myocardial function—a new approach. *Eur Heart J* 2000; 21: 1337-57.
9. Thomas L, Levett K, Boyd A, Leung DY, Schiller NB, Ross DL. Changes in regional left atrial function with aging: evaluation by Doppler tissue imaging. *Eur J Echocardiogr* 2003; 4: 92-100.
10. Hoit BD, Shao Y, Gabel M. Influence of acutely altered loading conditions on left atrial appendage flow velocities. *J Am Coll Cardiol* 1994; 24: 1117-23.
11. Javaheri S, Parker TJ, Liming JD, Corbett WS, Nishiyama H, Wexler L, et al. Sleep apnea in 81 ambulatory male patients with stable heart failure: types and their prevalence, consequences, and presentations. *Circulation* 1998; 97: 2154-9.
12. Chan J, Sanderson J, Chan W, Lai C, Choy D, Ho A, et al. Prevalence of sleep disordered breathing in diastolic heart failure. *Chest* 1997; 111: 1488-93.
13. Bradley TD, Floras JS. Sleep apnea and heart failure, part I: obstructive sleep apnea. *Circulation* 2003; 107: 1671-8.
14. Gardin JM, Adams DB, Douglas PS, Feigenbaum H, Forst DH, Fraser AG, et al. American Society of Echocardiography. Recommendations for a standardized report for adult transthoracic echocardiography: a report from the American Society of Echocardiography's Nomenclature and Standards Committee and Task Force for a Standardized Echocardiography Report. *J Am Soc Echocardiogr* 2002; 15: 275-90.
15. Lang RM, Bierig M, Devereux RB, Flachskampf FA, Foster E, Pellikka PA, et al. Chamber Quantification Writing Group; American Society of Echocardiography's Guidelines and Standards Committee; European Association of Echocardiography. Recommendations for chamber quantification: a report from the American Society of Echocardiography's Guidelines and Standards Committee and the Chamber Quantification Writing Group, developed in conjunction with the European Association of Echocardiography, a branch of the European Society of Cardiology. *J Am Soc Echocardiogr* 2005; 18: 1440-63.
16. Quinones MA, Otto CM, Stoddard M, Waggoner A, Zoghbi WA; Doppler Quantification Task Force of the Nomenclature and Standards Committee of the American Society of Echocardiography. Recommendations for quantification of Doppler echocardiography: a report from the Doppler Quantification Task Force of the Nomenclature and Standards Committee of the American Society of Echocardiography. *J Am Soc Echocardiogr* 2002; 15: 167-84.
17. Mor-Avi V, Lang RM, Badano LP, Belohlavek M, Cardim NM, Derumeaux G, et al. Current and Evolving Echocardiographic Techniques for the Quantitative Evaluation of Cardiac Mechanics: ASE/EAE Consensus Statement on Methodology Indications endorsed by the Japanese Society of Echocardiography. *J Am Soc Echocardiogr* 2011; 24: 277-313.
18. Nagueh SF, Appleton CP, Gillebert TC, Marino PN, Oh JK, Smiseth OA, et al. Recommendations for the evaluation of left ventricular diastolic function by echocardiography. *J Am Soc Echocardiogr* 2009; 22: 107-33.
19. Hosmer DW, Lemeshow S. *Applied Logistic Regression—Second Edition*, John Wiley & Sons, INC, USA, 2000.
20. Dumitrascu R, Tiede H, Rosengarten B, Schulz R. Obstructive sleep apnea and stroke. *Pneumologie* 2012; 66: 476-9.
21. Agmon Y, Khandheria BK, Gentile F, Seward JB. Echocardiographic assessment of the left atrial appendage. *J Am Coll Cardiol* 1999; 34: 1867-77.
22. Wheeler R, Masani ND. The role of echocardiography in the management of atrial fibrillation. *Eur J Echocardiogr* 2011; 12: 33-8.
23. Kumak F, Güngör H. Comparison of the left atrial appendage flow velocities between patients with dipper versus nondipper hypertension. *Echocardiography* 2012; 29: 391-6.
24. Asker M, Timuçin OB, Asker S, Karadağ MF. Effect of ramipril therapy on abnormal left atrial appendage function. *J Int Res* 2011; 39: 2429-35.
25. Kusuoka H, Weisfeldt ML, Zweier JL, Jacobus WE, Marban E. Mechanism of early contractile failure during hypoxia in intact ferret heart: evidence for modulation of maximal Ca²⁺-activated force by organic phosphate. *Circ Res* 1986; 59: 270-82.
26. Cohn JN, Ferrari R, Sharpe N. Cardiac remodeling: concepts and clinical implications: a consensus paper from the international forum on cardiac remodeling. *J Am Coll Cardiol* 2000; 35: 569-82.
27. Arias MA, Garcia-Rio F, Alonso-Fernandez A, Mediano O, Martinez I, Villamor J. Obstructive sleep apnea syndrome affects left ventricular diastolic dysfunction: effects of nasal continuous positive airway pressure in men. *Circulation* 2005; 112: 375-83.
28. Fung JW, Li TS, Choy DK, Yip GW, Ko FW, Sanderson JE, et al. Severe obstructive sleep apnea is associated with left ventricular diastolic dysfunction. *Chest* 2002; 121: 422-9.
29. Carlson JT, Hedner J, Elam M, Ejnell H, Sellgren J, Wallin BG. Augmented resting sympathetic activity in awake patients with obstructive sleep apnea. *Chest* 1993; 103: 1763-8.
30. Lee SW, Choi EY, Jung SY, Choi ST, Lee SK, Park YB. E/E' ratio is more sensitive than E/A ratio for detection of left ventricular dia-

- stolic dysfunction in patients with systemic sclerosis. Clin Exp Rheumatol 2010; 28: 12-7.
31. Lee SW, Park MC, Park YB, Lee SK. E/E' ratio is more sensitive than E/A ratio for detection of left ventricular diastolic dysfunction in systemic lupus erythematosus. Lupus 2008; 17: 195-201.
 32. Kloch-Badelek M, Kuznetsova T, Sakiewicz W, Tikhonoff V, Ryabikov A, Gonzalez A, et al. European Project on Genes in Hypertension (EPOGH) Investigators. Prevalence of left ventricular diastolic dysfunction in European populations based on cross-validated diagnostic thresholds. Cardiovasc Ultrasound 2012; 10: 10.
 33. Tsang TS, Barnes ME, Gersh BJ, Bailey KR, Seward JB. Left atrial volume as a morphophysiologic expression of left ventricular diastolic dysfunction and relation to cardiovascular risk burden. Am J Cardiol 2002; 90: 1284-9.
 34. Prittchet AM, Mahoney DW, Jacobsen SJ, Rodeheffer RJ, Karon BL, Redfield MM. Diastolic dysfunction and left atrial volume: a population-based study. J Am Col Cardiol 2005; 45: 87-92.
 35. Vural MG, Çetin S, Fırat H, Akdemir R, Yeter E. Impact of continuous positive airway pressure therapy on left atrial function in patients with obstructive sleep apnoea: assessment by conventional and two-dimensional speckle tracking echocardiography. Acta Cardiol 2014; 69: 175-84.
 36. Karabay CY, Zehir R, Güler A, Oduncu V, Kalaycı A, Aung SM, et al. Left atrial deformation parameters predict left atrial appendage function and thrombus in patients in sinus rhythm with suspected cardioembolic stroke: a speckle tracking and transesophageal echocardiography study. Echocardiography 2013; 30: 572-81.

