

RESEARCH ARTICLE

Peptide Lv augments intermediate-conductance calcium-dependent potassium channels ($K_{Ca3.1}$) in endothelial cells to promote angiogenesis

Dylan L. Pham¹, Autumn Niemi¹, Michael L. Ko^{1,2}, Gladys Y. P. Ko^{1,3*}

1 Department of Veterinary Integrative Biosciences, College of Veterinary Medicine and Biomedical Sciences, Texas A&M University, College Station, Texas, United States of America, **2** Department of Biology, Division of Natural and Physical Sciences, Blinn College, Bryan, Texas, United States of America, **3** Texas A&M Institute for Neuroscience, Texas A&M University, College Station, Texas, United States of America

* gko@cvm.tamu.edu



OPEN ACCESS

Citation: Pham DL, Niemi A, Ko ML, Ko GYP (2022) Peptide Lv augments intermediate-conductance calcium-dependent potassium channels ($K_{Ca3.1}$) in endothelial cells to promote angiogenesis. PLoS ONE 17(10): e0276744. <https://doi.org/10.1371/journal.pone.0276744>

Editor: Shang-Zhong Xu, University of Hull, UNITED KINGDOM

Received: June 21, 2022

Accepted: October 12, 2022

Published: October 25, 2022

Copyright: © 2022 Pham et al. This is an open access article distributed under the terms of the [Creative Commons Attribution License](https://creativecommons.org/licenses/by/4.0/), which permits unrestricted use, distribution, and reproduction in any medium, provided the original author and source are credited.

Data Availability Statement: All relevant data are within the paper.

Funding: GK-NIHR21EY031813-01A1 from the National Eye Institute of the National Institutes of Health, and a philanthropist gift fund DP-Texas A&M College of Veterinary Medicine and Biomedical Sciences Graduate Student Research Trainee Grant The funders had no role in study design, data collection and analysis, decision to publish, or preparation of the manuscript.

Abstract

Peptide Lv is a small endogenous secretory peptide that is expressed in various tissues and conserved across different species. Patients with diabetic retinopathy, an ocular disease with pathological angiogenesis, have upregulated peptide Lv in their retinas. The pro-angiogenic activity of peptide Lv is in part through promoting vascular endothelial cell (EC) proliferation, migration, and sprouting, but its molecular mechanism is not completely understood. This study aimed to decipher how peptide Lv promotes EC-dependent angiogenesis by using patch-clamp electrophysiological recordings, Western immunoblotting, quantitative PCR, and cell proliferation assays in cultured ECs. Endothelial cells treated with peptide Lv became significantly hyperpolarized, an essential step for EC activation. Treatment with peptide Lv augmented the expression and current densities of the intermediate-conductance calcium-dependent potassium ($K_{Ca3.1}$) channels that contribute to EC hyperpolarization but did not augment other potassium channels. Blocking $K_{Ca3.1}$ attenuated peptide Lv-elicited EC proliferation. These results indicate that peptide Lv-stimulated increases of functional $K_{Ca3.1}$ in ECs contributes to EC activation and EC-dependent angiogenesis.

Introduction

Pathological angiogenesis/neovascularization manifests in various diseases including cancers [1], atherosclerosis [2], arthritis [3], and ocular diseases such as diabetic retinopathy (DR) and age-related macular degeneration [4–6]. Therapies targeting vascular endothelial growth factor (VEGF) or its receptors are widely used to combat these diseases by dampening neovascularization [7–9]. However, nearly 30% of patients do not respond or become resistant to anti-VEGF therapies [9–11]. Repetitive anti-VEGF injections are needed to block recurring neovascularization, which often leads to unwanted side effects [9–11]. One possible explanation for

Competing interests: The authors have declared that no competing interests exist.

the resistance to anti-VEGF treatments and recurring neovascularization is the involvement of other angiogenic factors that are insensitive to anti-VEGF agents [9–11]. Thus, finding VEGF-independent pro-angiogenic factors and understanding their molecular mechanisms become clinically imperative for the development of new therapeutics against pathological neovascularization.

We discovered a small endogenous peptide (~40 amino acids), peptide Lv, that is upregulated in the retinas of patients with early proliferative diabetic retinopathy (DR) as well as diabetic animals [12–14]. The gene encoding peptide Lv is in the V-set and transmembrane domain containing 4 gene (*Vstm4*; human gene ID: 196740, a.a. 55–94; mouse gene ID: 320736, a.a. 55–103; [12]). Its amino acid sequence is highly conserved (>90%) among humans, mice, rats, and chickens [12]. The mRNA of peptide Lv is expressed in various organs including the eye, heart, brain, liver, spleen, and lung [12] and cell types including retinal neurons, vascular endothelial cells (ECs), and cardiomyocytes [12, 13]. Functionally, peptide Lv elicits concentration-dependent vasodilation in porcine coronary and retinal arterioles [14], similar to how VEGF acts as a vasodilator [15]. Peptide Lv is also pro-angiogenic since it promotes developmental and pathological angiogenesis *in vivo* [14]. During development, chicken embryos treated with peptide Lv (*in ovo*) or postnatal mice injected with peptide Lv intraocularly have significant growth of microvasculature [14]. Mouse eyes with oxygen-induced retinopathy (OIR) have upregulated peptide Lv [14], which is similar to the upregulation of VEGF in these eyes [7, 8, 16, 17]. Intraocular injections with an antibody against peptide Lv, anti-Lv, dampen pathological neovascularization in mouse eyes with OIR or laser-induced choroidal neovascularization [14]. Furthermore, mice with a genetic deletion of peptide Lv (peptide Lv^{-/-}) have significantly higher OIR-induced vaso-obliteration and lower OIR-neovascularization compared to the littermate controls (peptide Lv^{+/+}; [14]). These data provide evidence that peptide Lv is an angiogenic factor that is involved in pathological neovascularization.

Upon further investigation, peptide Lv elicits vascular EC proliferation, migration, and sprouting, which are three fundamental properties in angiogenesis [14]. One of the initial steps for EC-dependent vasodilation or angiogenesis is the membrane hyperpolarization of ECs [18–22], and opening EC potassium (K⁺) channels is required for EC hyperpolarization [18–20, 23–27]. Several K⁺ channels expressed in ECs can mediate the outflow of K⁺, including intermediate conductance calcium-dependent K⁺ channels (IKCa/KCNN4/K_{Ca}3.1) [25, 26, 28], small conductance calcium-dependent K⁺ channels (sKCa/KCNN3/K_{Ca}2.3) [25, 26, 28], and ATP-sensitive K⁺ channels (K_{ATP}/Kir6.1) [19, 29–31].

Since it is likely that peptide Lv-elicited vasodilation and angiogenesis is in part through an EC-dependent process, we postulated that peptide Lv might elicit EC hyperpolarization through activating EC-expressed K⁺ channels. In this study, we combined patch-clamp electrophysiological recordings and molecular analyses to determine whether peptide Lv caused any changes in EC membrane potential, and which EC-expressed K⁺ channel(s) is involved and leads to peptide Lv-elicited angiogenesis.

Materials and methods

This study (agents and experimental activities) was approved by the Institutional Biosafety Committee (IBC) of Texas A&M University (IBC Permit: IBC 2020–104).

Chemicals

Peptide Lv was custom-made by Peptide 2.0 Inc (Chantilly, VA, USA). The murine amino acid sequence used to make peptide Lv is DSLLAVRWFFAPDGSQEALMVKMTKLRII-QYYGNFSRTANQQRLRLLEE [12, 13]. Peptide Lv tested negative for endotoxin. Other

inhibitors and chemicals used in this study were: TRAM-34 ($K_{Ca3.1}$ inhibitor; #AAJ600 19-MB, Thermo Fisher Scientific, Waltham, MA, USA), DMH4 (VEGFR2 inhibitor; #4471, Tocris, Minneapolis, MN, USA), β -escin (#E1378, Sigma-Aldrich, St. Louis, MO, USA). and VEGF (#ab9571, Abcam, Waltham, MA, USA).

Cell cultures

Human umbilical vein endothelial cells (HUVECs; #200-05n, Cell Applications Inc, San Diego, CA, USA) and human retinal endothelial cells (HRECs; #ACBRI 181, Cell Systems, Kirkland, WA, USA) were cultured in EGM™ -2 MV Microvascular Endothelial Cell Growth Medium (EGM; #CC-3202, Lonza, Walkersville, MD, USA) at 37°C and 5% CO₂. For immunoblot and qPCR experiments, ECs were seeded onto 60 mm culture plates and grown to 100% confluency then treated with peptide Lv (500 ng/ml) or phosphate-buffered saline (PBS; vehicle control) for 4 hours. For patch-clamp experiments, ECs were seeded onto 12 mm acid-washed glass coverslips and placed in an incubator for 48 hours to allow cells to adhere. Cultures were then treated with peptide Lv (500 ng/ml) or PBS for 2, 3, and 4 hours prior to recordings. For cell proliferation assays, HUVECs were seeded onto 96-well plates in EGM and allowed to adhere overnight. Peptide Lv (500 ng/ml), VEGF (5 ng/ml), DMH4 (5 μ M), and TRAM-34 (10 μ M) were added to cells and continuously incubated for another 48 hours prior to proliferation assays.

Patch-clamp electrophysiology

Whole-cell patch-clamp recordings on cultured HUVECs were carried out using β -escin-based perforated patches [32–34]. The methods and parameters for recording endothelial membrane potentials (current-clamp) and the $K_{Ca3.1}$ current (voltage-clamp) are based on previous publications [35–37]. The external solution was (in mM): 160 NaCl, 4.5 KCl, 1 MgCl₂, 2 CaCl₂, 10 HEPES, and 1 glucose at pH 7.5 adjusted with NaOH. The pipette solution was (in mM): 120 KCl, 1.75 MgCl₂, 1 Na₂ATP, 10 EGTA, 4.1 CaCl₂, and 10 HEPES at pH 7.2 adjusted with KOH. The free calcium concentration in the pipette solution was calculated to be 100 nM using an online calcium chelator calculator [38]. β -escin was freshly prepared as a 35 mM stock solution in water, kept on ice, and then added to the pipette solution to yield a final concentration of 35 μ M. Before recordings, cells were first treated with peptide Lv (500 ng/ml) or PBS (vehicle; as controls) and maintained in the incubator for 0, 2, 3, or 4 hours. There was no statistical difference in amplitudes (either membrane potentials or currents) among the controls recorded, so their data were combined as a single control group. All recordings were performed at room temperature (23°C) using an A-M 2400 amplifier (A-M Systems Inc., Carlsborg, WA, USA). Signals were low-pass filtered at 1 kHz and digitized at 5 kHz with a Digidata 1550A interface (Axon Instruments/Molecular Devices, Union City, CA, USA) and pCLAMP 10.0 software (Molecular Devices). Electrode capacitance was compensated after gigaohm ($G\Omega$) seals were formed. The membrane capacitance, series resistance, and input resistance of the recorded ECs were measured by applying a +5 mV (100 ms) depolarizing voltage step from a holding potential of -60 mV. Cells with an input resistance <1 $G\Omega$ (smaller than 1 gigaohm) were discarded. The membrane capacitance reading was used as the value for whole cell capacitance (in pF). The outward currents (in pA) were elicited with a step-command from a holding potential at -60 mV to 40 mV for 300 ms. From the same cell, the total outward current containing $K_{Ca3.1}$ was first recorded, followed by perfusion of 10 μ M TRAM-34 ($K_{Ca3.1}$ inhibitor) to the recording chamber for 5 minutes, and then a second current elicited and recorded in the presence of TRAM-34. The $K_{Ca3.1}$ current from a single cell was isolated by a subtraction between the two recorded currents in the absence or

presence of TRAM-34. The current density (pA/pF) was obtained by dividing the $K_{Ca3.1}$ current amplitude (measured at 200 ms; the tau point) by the whole cell capacitance. The membrane potentials were recorded under the current-clamp mode by injecting a 20 pA current for 750 ms.

MTT assays

The proliferation of HUVECs was determined using Tetrazolium dye 3-(4,5-dimethylthiazol-2-yl)-2,5-diphenyltetrazolium bromide (MTT) assays (Thermo Fisher Scientific, Waltham, MA, USA) as we previously described [13, 14, 39]. HUVECs were seeded onto 24-well plates in EGM culture medium and allowed to adhere overnight. When cultures reached 60% confluency, peptide Lv (500 ng/ml), VEGF (5 ng/ml), DMH4 (5 μ M), and TRAM-34 (10 μ M) were added to cells and continuously incubated for another 48 hours. On the day of the assays, cells were incubated with the MTT solution (1.2 mM final concentration) for 4 hours at 37°C, after which the solution was removed, and 10% sodium dodecyl sulfate was added to break the plasma membrane. The absorbance at 560 nm was measured using a microplate reader (Awareness Technology Inc., Palm City, FL, USA).

Immunoblot analysis

Cultured ECs were treated with PBS (vehicle control) or peptide Lv (500 ng/ml) for 4 hours then harvested and prepared for immunoblot analysis as we described previously [12, 13]. In brief, cells were lysed with a RIPA lysis buffer, and proteins were denatured by mixing with 2X Lamelli sample buffer and heating for 5 minutes at 95 °C. Samples were separated using a 10% SDS-polyacrylamide gel and transferred to a nitrocellulose membrane. Membranes were incubated with the primary antibodies overnight at 4 °C. The primary antibodies used were rabbit polyclonal anti-KCNN4, ($K_{Ca3.1}$, #APC-0641:200; Alomone Labs, Jerusalem, Israel), rabbit polyclonal anti-KCNN3 ($K_{Ca2.3}$, #APC-025; 1:200; Alomone Labs, Jerusalem, Israel), rabbit polyclonal anti-Kir6.1 (1:500; #NBP1-87710, Novus Biologicals, Littleton, CO, USA), and rabbit monoclonal β -actin (1:1000; #4970S, Cell Signaling Technologies, Danvers, MA, USA). Membranes were then washed with a TBS-tween solution followed by incubating with an anti-rabbit IgG HRP-linked antibody (1:1000; #7074S, Cell Signaling Technologies, Danvers, MA, USA) for 1 hour at room temperature (23 °C). Bands were visualized using Super Signal West Pico or Femto chemiluminescent substrate (#34078 or #34096, Pierce Biotechnology Inc., Rockford, IL, USA). Membranes were scanned using an immunoblot scanner (LI-COR Biosciences, Lincoln, NE, USA). Band intensities were quantified using Image J (National Institutes of Health; NIH, Bethesda, MA, USA). The band intensities were first normalized to the internal control, β -actin, and subsequently, the relative changes were quantified according to the method described by Janes [40].

Quantitative PCR (qPCR)

qPCR was performed as described previously [12–14]. After the cells were collected, total ribonucleic acid (RNA) from each sample was prepared by using a commercially available purification kit (RNeasy kit; #74106, Qiagen, Germantown, MD, USA). From each sample, 500 ng of total RNA was used to quantify messenger (mRNA) by qPCR using a High-Capacity cDNA Reverse Transcription Kit (#4368814, Applied Biosystems, Grand Island, NY, USA), Taqman qPCR master mix (#4444556; Applied Biosystems, Grand Island, NY, USA), and SYBR green supermix ROX (#95055–500, QuantaBio, Beverly, MA, USA) with a CFX Connect Real-Time PCR Detection System (Bio-Rad, Hercules, CA, USA). Primers used were purchased from Life Technologies (Carlsbad, CA, USA): *Kcnn4* (Forward: 5' –ATCTCCAAGATGCACATGATCC–

3'; Reverse: 5' -TAGCCTGGTTCCCTCCTCGTG-3'). *TRPV4* (Forward: 5' -CCAAG-TACCCCGTGGTCTTCATC-3'; Reverse: 5' -AGGATGGTGGTGGCCAC-3'); and *β -actin* (Forward: 5' -CAACGGCTCCGGCATGTGCAA-3'; Reverse 5' -GTACATGGCTGGGGTGTG-GAAGGTCTC-3').

For each experiment, a standard curve was generated with known quantities of RNAs loaded in serial dilutions (i.e., 2, 1, 1/2, 1/4, 1/8, 1/16, and 1/32). The cycle values, corresponding to the log values of the standard curve quantities, were used to generate a linear regression formula. The amplification efficiency of the qPCR reactions (90–100%) was calculated using the standard curve. The quantification of sample RNA was calculated by the $2^{(-\Delta\Delta Ct)}$ method [41] using *β -actin* as the internal control.

Statistical analysis

All data are presented as mean \pm standard error of the mean (SEM). Differences between two groups were analyzed using the student's *t*-test. Differences between multiple groups were analyzed by one-way ANOVA and Tukey *post hoc* tests. The statistical software was Origin 8.6 (OriginLab, Northampton, MA, USA). Throughout, $p < 0.05$ was considered significant.

Results

Peptide Lv hyperpolarizes the membrane potentials of ECs

We previously showed that peptide Lv promotes vasodilation and angiogenesis [14]. Membrane hyperpolarization in ECs is an essential step in EC-dependent vasodilation and angiogenesis [18, 24, 42, 43], so we first tested whether peptide Lv could elicit EC hyperpolarization. Using whole-cell current-clamp recordings, we found that treatment with peptide Lv (500 ng/ml) for 3 or 4 hours in cultures elicited membrane hyperpolarization of HUVECs compared to the vehicle control (PBS; Fig 1). The average membrane potential for HUVECs without peptide Lv is -72.73 ± 0.71 mV. After HUVECs were treated with peptide Lv for 3 or 4 hours, the average membrane potential was -78.88 ± 0.63 mV and -79.61 ± 0.88 mV, respectively. Thus, peptide Lv-elicited vasodilation and angiogenesis is in part through hyperpolarizing the EC plasma membrane.

The intermediate-conductance calcium-dependent K^+ channel ($K_{Ca}3.1$) is a major player in peptide Lv-elicited endothelial hyperpolarization

Opening the endothelial K^+ channels is required for EC hyperpolarization that leads to vasodilation [31, 44], so we next determined which K^+ channels mediated peptide Lv-elicited EC hyperpolarization. Since peptide Lv elicited EC hyperpolarization after the cells were treated for 3 or 4 hours (Fig 1), we next tested which K^+ channels were possibly upregulated by peptide Lv in cultured ECs. The HUVECs were first treated with peptide Lv (500 ng/ml) for 4 hours in cultures and subsequently harvested for qPCR or immunoblots to analyze various EC K^+ channels that mediate EC hyperpolarization. Peptide Lv had no effect on the expression of the small-conductance calcium-dependent K^+ channels ($K_{Ca}2.3$; Fig 2A), and it decreased the protein level of ATP-sensitive K^+ channels (Kir6.1; Fig 2B). Since decreased expression of Kir6.1 reduces endothelial hyperpolarization [30], and peptide Lv caused a decrease of Kir6.1 in cultured ECs, we eliminated Kir6.1 as a potential player in peptide Lv-mediated EC hyperpolarization. We previously showed that peptide Lv augments L-type voltage-gated calcium channels in cardiomyocytes and photoreceptors [12, 13], so it is possible that peptide Lv may augment other calcium channels in ECs, such as the transient receptor potential cation channel 4 (TRPV4) that indirectly contributes to EC hyperpolarization, as calcium influx through

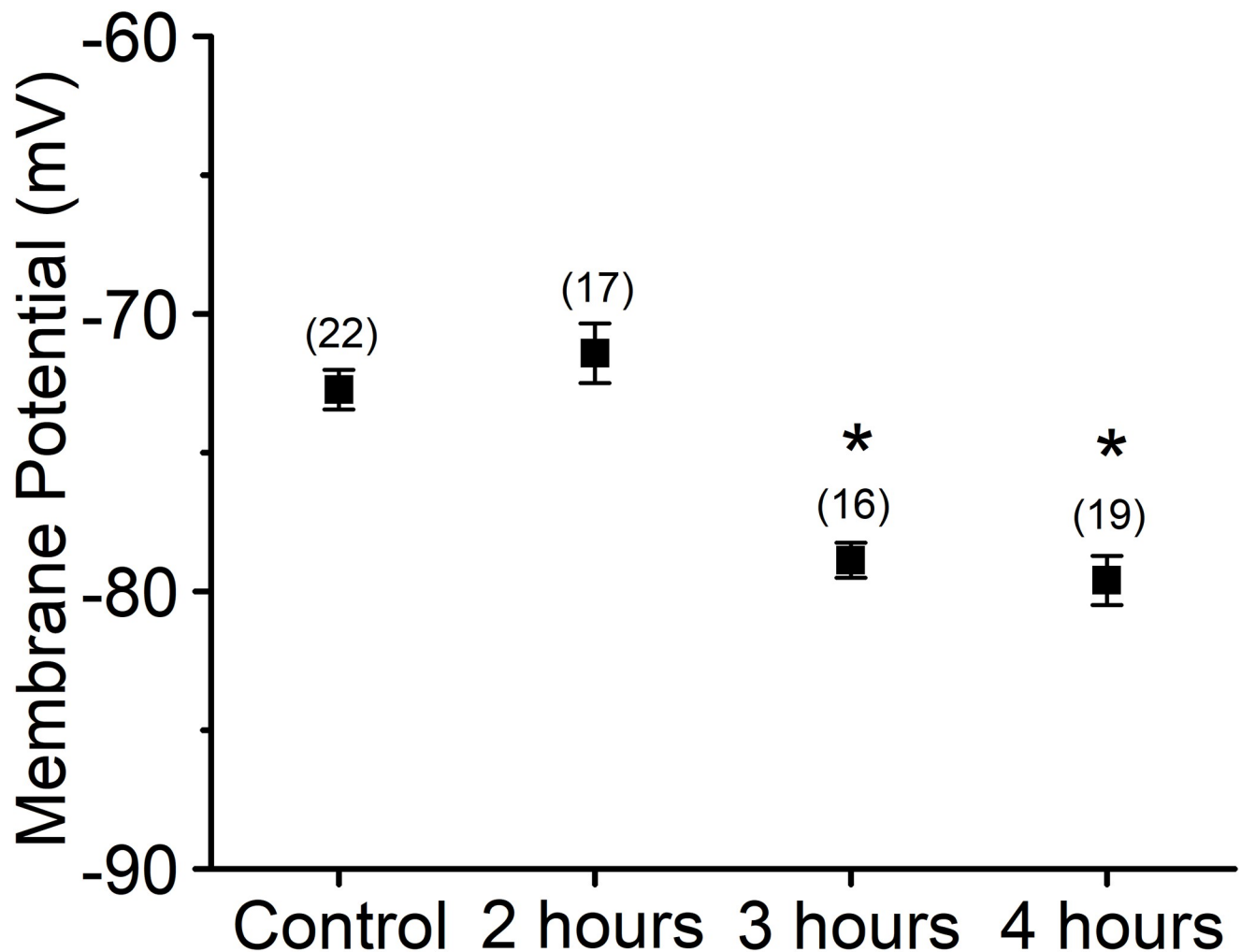


Fig 1. Peptide Lv hyperpolarizes the membrane potential of ECs. HUVECs were seeded onto glass coverslips and kept in an incubator for 48 hours to allow the cells to adhere. Cells were then treated with PBS (vehicle control) or peptide Lv (500 ng/ml) for 2, 3, or 4 hours prior to whole-cell current-clamp recordings. Membrane potentials were significantly hyperpolarized after treatments with peptide Lv (3 hr: -78.88 ± 0.63 mV and 4 hr: -79.61 ± 0.88 mV, respectively) compared to the PBS-treated controls (-72.73 ± 0.71 mV). Treatment with peptide Lv for 2 hours did not affect the EC membrane potential significantly (-71.42 ± 1.07 mV). One-way ANOVA followed with Tukey *post hoc* tests were used for statistical analyses; $n = 16-19$ for each group; * $p < 0.05$.

<https://doi.org/10.1371/journal.pone.0276744.g001>

TRPV4 may allow calcium-dependent K^+ channels to open [45, 46]. After cells were treated with peptide Lv, there was no change in the expression of TRPV4 (Fig 2C). However, we found that peptide Lv significantly increased the mRNA and protein expression of $K_{Ca}3.1$ in HUVECs as well as in human retinal ECs (HRECs; Fig 3). These findings suggest that $K_{Ca}3.1$ could be a key player in mediating endothelial hyperpolarization elicited by peptide Lv.

Peptide Lv augments the $K_{Ca}3.1$ current densities in ECs

As peptide Lv increased the mRNA and protein expression of $K_{Ca}3.1$ in ECs, we next determined whether peptide Lv was able to increase the functional $K_{Ca}3.1$. Cultured HUVECs were treated with PBS (vehicle control) or peptide Lv (500 ng/ml) for 2, 3, or 4 hours before the whole-cell voltage-clamp recordings of $K_{Ca}3.1$ currents. TRAM-34 (10 μ M; a $K_{Ca}3.1$ inhibitor) was applied to the bath solution to isolate the $K_{Ca}3.1$ current. HUVECs treated with peptide Lv (500 ng/ml) for 3 or 4 hours had significantly larger $K_{Ca}3.1$ current densities compared to cells

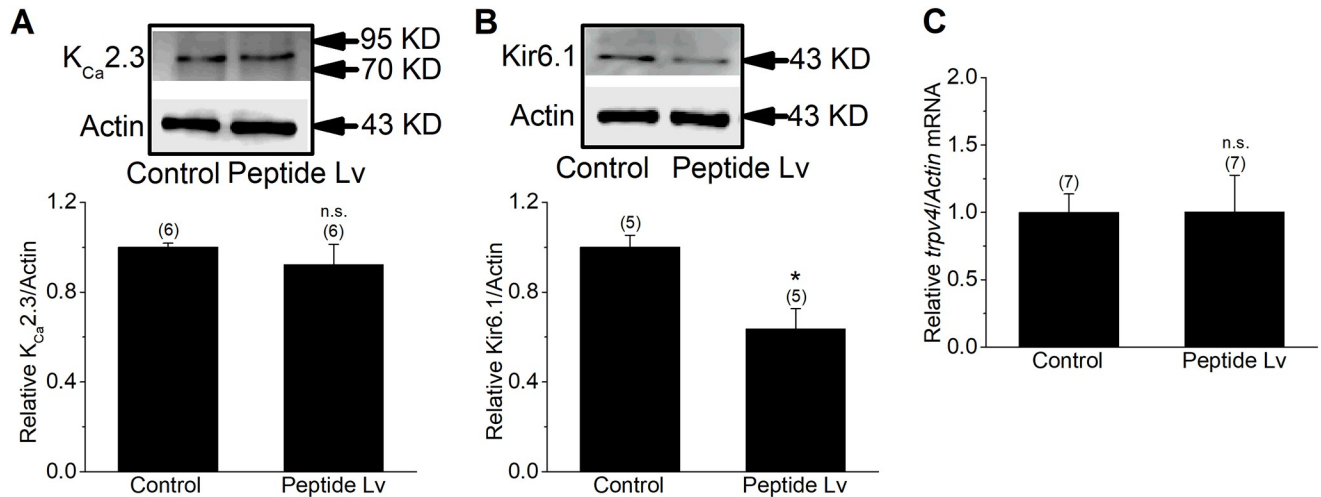


Fig 2. Peptide Lv does not increase the expressions of $K_{Ca}2.3$, Kir6.1, or TRPV4 in ECs. Endothelial cells were treated with PBS (vehicle control) or peptide Lv (500 ng/ml) for 4 hours and processed for immunoblotting or qPCR. Peptide Lv did not increase (A) $K_{Ca}2.3$, (B) Kir6.1, or (C) TRPV4 in cultured HUVECs. Student's *t*-test was used for statistical analyses; * $p < 0.05$.

<https://doi.org/10.1371/journal.pone.0276744.g002>

treated with a vehicle (Fig 4B). Thus, peptide Lv not only increased the mRNA and protein expression of $K_{Ca}3.1$ but also augmented the $K_{Ca}3.1$ activities in ECs. The augmentation of $K_{Ca}3.1$ by peptide Lv positively correlated to peptide Lv-elicited EC hyperpolarization, indicating that $K_{Ca}3.1$ was the K^+ channel that mediated peptide Lv-elicited EC hyperpolarization.

Peptide Lv promotes endothelial proliferation through $K_{Ca}3.1$

As we showed that peptide Lv facilitates angiogenesis in part through promoting EC proliferation [14], we tested whether blocking $K_{Ca}3.1$ would inhibit peptide Lv-stimulated EC proliferation. Cultured HUVECs were treated with VEGF (5 ng/ml; positive control), peptide Lv (500

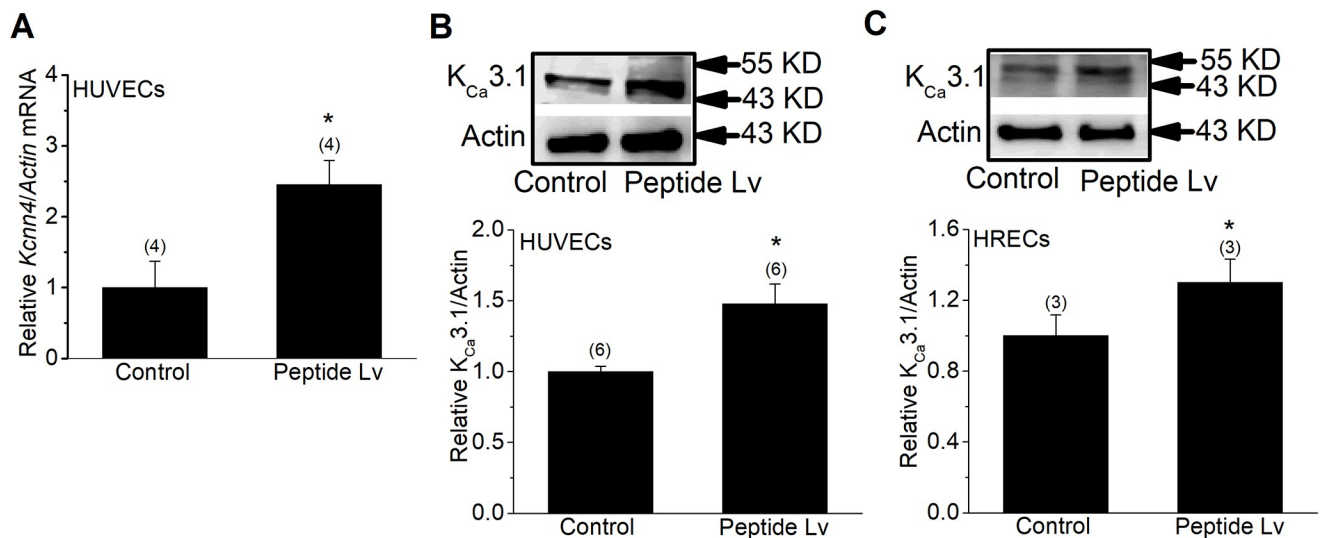


Fig 3. Peptide Lv increases the mRNA and protein levels of $K_{Ca}3.1$ (*Kcnn4*) in ECs. Endothelial cells were treated with PBS (vehicle control) or peptide Lv (500 ng/ml) for 4 hours and processed for qPCR or immunoblotting. Peptide Lv increased the mRNA (A) and protein (B) levels of $K_{Ca}3.1$ in cultured HUVECs. (C) Peptide Lv also increased the protein level of $K_{Ca}3.1$ in HRECs. Student's *t*-test was used for statistical analyses; * $p < 0.05$.

<https://doi.org/10.1371/journal.pone.0276744.g003>

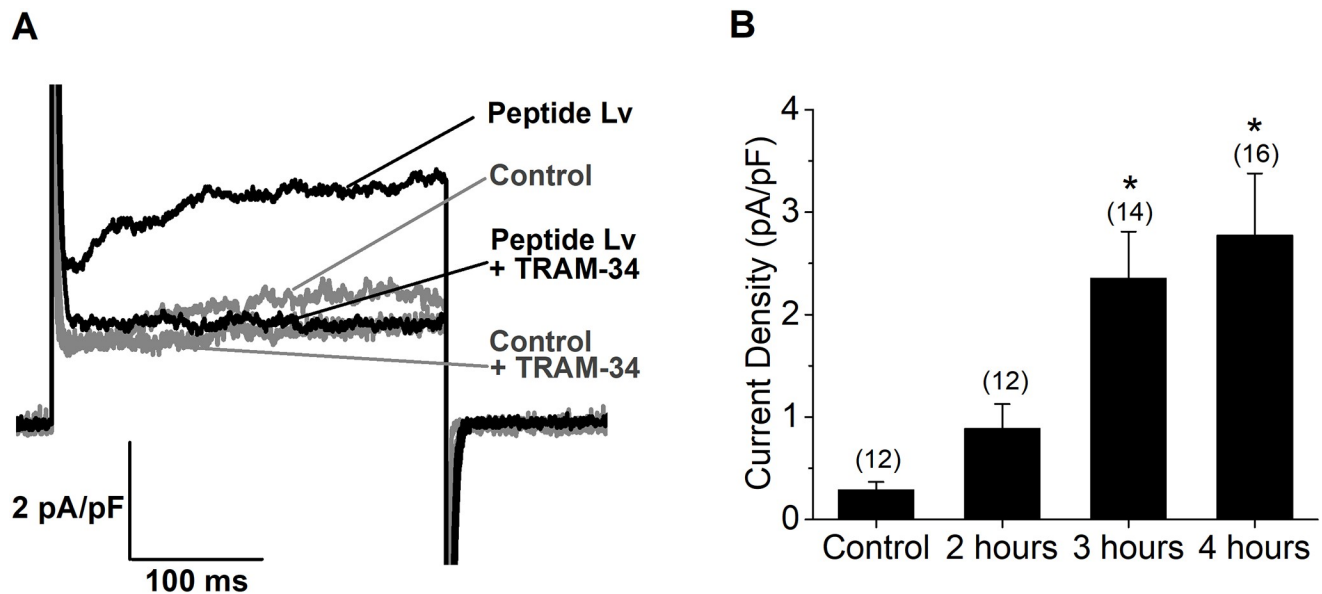


Fig 4. Peptide Lv augments the $K_{Ca3.1}$ current densities in HUVECs. Whole-cell voltage-clamp recordings were performed on cultured HUVECs treated with PBS (vehicle control) or peptide Lv (500 ng/ml) for 2, 3, or 4 hours. The outward current was elicited with a step command from a holding potential at -60 mV to 40 mV for 300 ms. From the same cell, the first current was recorded in normal external solution, and then a second current was recorded in the presence of TRAM-34 (10 μ M) to isolate the $K_{Ca3.1}$ current. (A) Four representative traces recorded from two cells are shown. The two gray traces are recordings from the control cell (pretreated with PBS) in the absence (upper) or presence (lower) of TRAM-34. The two black traces are recordings from the cell pretreated with peptide Lv for 3 hours in the absence (upper) or presence (lower) of TRAM-34. (B) The current density (pA/pF) was obtained by dividing the $K_{Ca3.1}$ current amplitude (measured at 200 ms; the tau point) by the whole cell capacitance. The $K_{Ca3.1}$ current density was significantly larger in ECs treated with peptide Lv for 3 (2.36 ± 0.46 pA/pF) or 4 hours (2.77 ± 0.60 pA/pF) but not for 2 hours (0.89 ± 0.24 pA/pF), compared to the control treated with PBS (0.29 ± 0.08 pA/pF). One-way ANOVA followed with Tukey *post hoc* tests were used for statistical analyses; $n = 12-16$ for each group; * $p < 0.05$.

<https://doi.org/10.1371/journal.pone.0276744.g004>

ng/ml), DMH4 (5 μ M; VEGFR2 inhibitor), TRAM-34 (10 μ M), or a combination for 4 hours. We previously showed that peptide Lv can bind to VEGFR2 and cause its activation through tyrosine phosphorylation [13], so it is not surprising that DMH4 reduced peptide Lv-elicited EC proliferation (Fig 5). Furthermore, blocking $K_{Ca3.1}$ (with TRAM-34) or both VEGFR2 and $K_{Ca3.1}$ (with DMH4+TRAM-34) significantly dampened peptide Lv-elicited EC proliferation. These data imply that peptide Lv-elicited angiogenesis is in part through $K_{Ca3.1}$ -dependent EC proliferation.

Discussion

In this study, we investigated a potential mechanism in the promotion of angiogenesis by peptide Lv. Hyperpolarization of ECs leads to EC activation and angiogenesis [18, 21, 22]. We found that peptide Lv hyperpolarized ECs and increased the expression and current densities of $K_{Ca3.1}$ after ECs were treated with peptide Lv for 3 hours in cultures. Peptide Lv-induced EC hyperpolarization was not through other K^+ channels, since treatment with peptide Lv did not increase the expressions of K_{ATP} , $K_{Ca2.3}$, or TRPV4. Furthermore, blocking $K_{Ca3.1}$ attenuated peptide Lv-stimulated EC proliferation. These results show that peptide Lv-elicited EC hyperpolarization was through the augmentation of $K_{Ca3.1}$, and EC $K_{Ca3.1}$ was involved in peptide Lv-elicited angiogenesis. While it might appear that changes of $K_{Ca3.1}$ current density are more prominent than the changes of its protein expression, this is due to the different methods and data analyses. The protein expressions detected via Western blots are relative data (normalized with actin) from a culture dish with 80% confluency of ECs (for $n = 1$). The

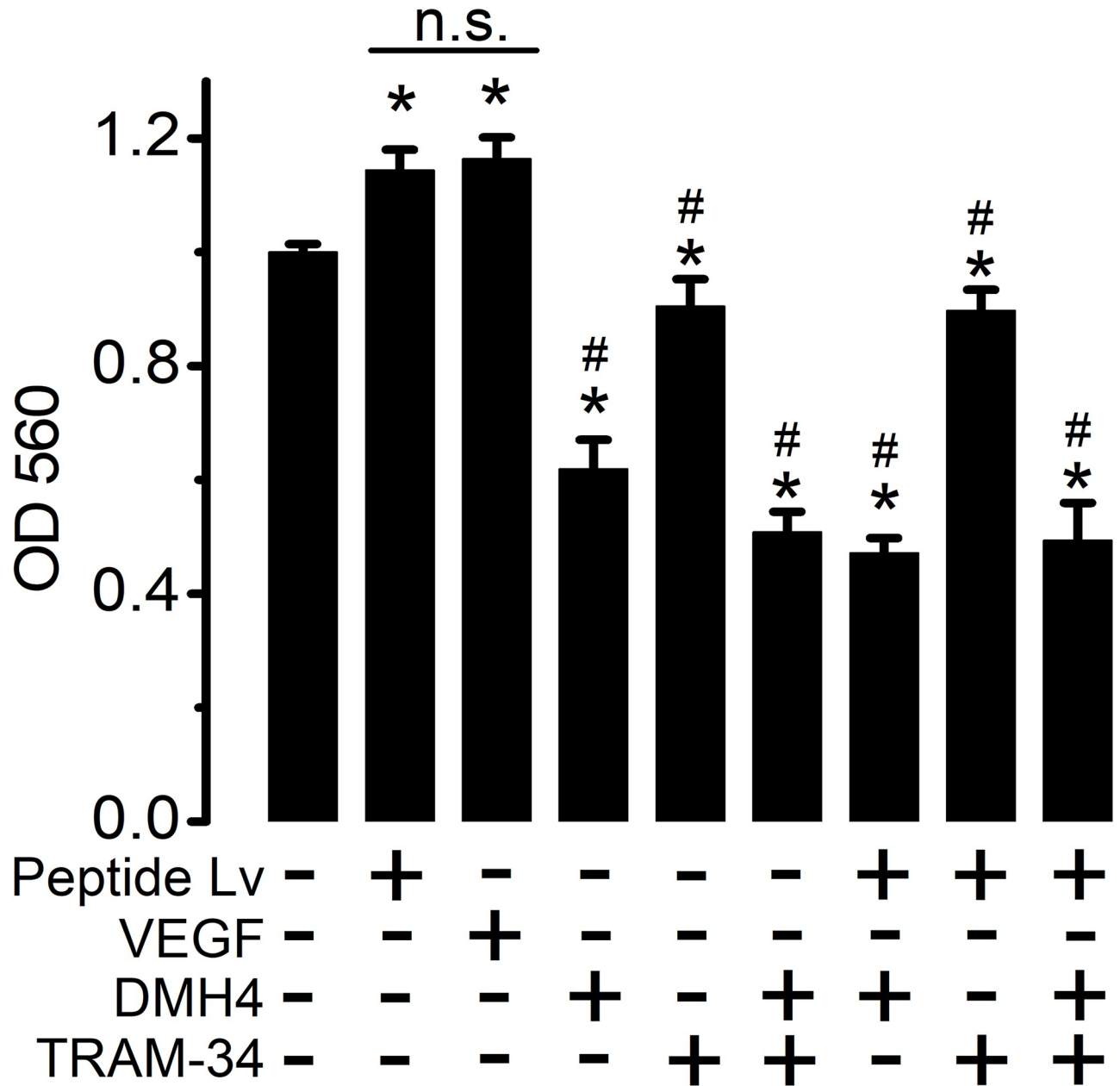


Fig 5. Inhibition of $K_{Ca}3.1$ dampens peptide Lv-elicited EC proliferation. HUVECs were treated with peptide Lv (500 ng/ml), DMH4 (5 μ M; a VEGFR2 inhibitor), TRAM-34 (10 μ M, a $K_{Ca}3.1$ inhibitor), or a combination of the above for 4 hours. Treatment with VEGF (5 ng/ml) served as a positive control and PBS as the vehicle control. The light absorbance was measured at 560 nm (OD 560 nm) for the MTT proliferation assays. One-way ANOVA followed with Tukey *post hoc* tests were used for statistical analyses; $n = 12-15$ for each group; “*” denotes a significant difference from the vehicle control; “#” denotes a significant difference from the peptide Lv treated group; $p < 0.05$.

<https://doi.org/10.1371/journal.pone.0276744.g005>

current density was obtained from the patch-clamp recording of a single EC (for $n = 1$), which is not a relative datum. Thus, peptide Lv-elicited increases in $K_{Ca}3.1$ protein expression (detected by Western blots) might not be directly reflected onto the recorded current densities (detected with patch-clamp recordings) and vice versa.

Regulation of vasomotion is critical in maintaining systemic blood flow, oxygen delivery, and the health of vessels and capillaries [47–49]. Naturally, vasodilation is a mechanism to

widen blood vessels and enhance blood flow to supply oxygen and nutrients to local tissues [47, 48, 50, 51]. However, chronic vasodilation of existing vessels causes increased vascular permeability in downstream capillaries [42, 43, 52], stimulates angiogenesis [53, 54], and promotes pathological neovascularization in various diseases [55–60]. Increased blood flow causes elevated shear stress in downstream small vessels and capillaries, which facilitates pericyte recruitment and microvascular sprouting and growth [58–61]. For example, vasodilation in both retinal arterioles and venules are associated with pathological neovascularization observed in proliferative diabetic retinopathy [58, 62–64]. Vasodilators such as VEGF increase the incidence of early age-related macular degeneration by 70% [57]. Retinal blood flow is increased in the proliferative phase of OIR and retinopathy of prematurity [65–68] and in the progression of choroidal neovascularization [69, 70]. Hence, chronic vasodilation is associated with the development of pathological neovascularization.

Previously, we showed that peptide Lv elicits vasodilation in coronary and retinal arterioles in a concentration-dependent manner [14]. VEGF-elicited vasodilation through its receptor (VEGFR2) is nitric oxide (NO)-dependent [15]. In contrast to VEGF, peptide Lv-elicited vasodilation is not completely attenuated by L-N^G-Nitro arginine methyl ester (L-NAME), a NO synthase inhibitor [14], suggesting that peptide Lv has an NO-independent pathway that mediates vasodilation and possible angiogenesis. In the present study, we showed a new route of peptide Lv's action. Peptide Lv-caused EC hyperpolarization through augmentation of K_{Ca}3.1 can be an additional pathway in peptide Lv-elicited vasodilation and angiogenesis. Whether peptide Lv-elicited augmentation of K_{Ca}3.1 in ECs mediates the NO-independent vasodilation will need to be further examined in the future.

The angiogenic property of peptide Lv is in part through binding to VEGFR2 [13], so the VEGFR2 antagonist DMH4 dampened peptide Lv-elicited EC proliferation. As peptide Lv also has VEGF/VEGFR2/NO-independent actions in vasodilation, it is possible that peptide Lv might contribute to the recurrent neovascularization and/or the resistance to anti-VEGF agents in patients. We demonstrated that peptide Lv is important in early photoreceptor development [12] and promotes cardiomyocyte function [13]. A recent study showed that peptide Lv plays a role in immune responses [71]. Macrophages treated with lipopolysaccharide (LPS) produce an increased inflammatory response that is dampened by treating the cells with peptide Lv [71]. In addition, bone-marrow derived macrophages isolated from mice with genetically knocked-out peptide Lv have a reduced inflammatory response compared to the macrophages isolated from wild-type mice [71]. As peptide Lv is a newly discovered small endogenous peptide that is expressed in multiple tissues and cell types, there may be more unknown functions and bioactivities of peptide Lv that are to be explored in the future.

Supporting information

S1 Fig. The original Western immunoblot images. The original Western immunoblot images included in Fig 2 is in S1 Fig.

(TIF)

S2 Fig. The original Western immunoblot images. The original Western immunoblot images included in Fig 3 is in S2 Fig.

(TIF)

Author Contributions

Conceptualization: Gladys Y. P. Ko.

Data curation: Dylan L. Pham, Autumn Niemi.

Formal analysis: Dylan L. Pham, Autumn Niemi, Gladys Y. P. Ko.

Funding acquisition: Gladys Y. P. Ko.

Investigation: Dylan L. Pham, Gladys Y. P. Ko.

Methodology: Gladys Y. P. Ko.

Project administration: Michael L. Ko, Gladys Y. P. Ko.

Resources: Gladys Y. P. Ko.

Supervision: Michael L. Ko, Gladys Y. P. Ko.

Validation: Gladys Y. P. Ko.

Writing – original draft: Dylan L. Pham, Gladys Y. P. Ko.

Writing – review & editing: Michael L. Ko, Gladys Y. P. Ko.

References

1. Yehya AHS, Asif M, Petersen SH, Subramaniam AV, Kono K, Majid A, et al. Angiogenesis: Managing the Culprits behind Tumorigenesis and Metastasis. *Medicina (Kaunas)*. 2018; 54(1):8 <https://doi.org/10.3390/medicina54010008> PMID: 30344239
2. Sedding DG, Boyle EC, Demandt JAF, Sluimer JC, Dutzmann J, Haverich A, et al. Vasa Vasorum Angiogenesis: Key Player in the Initiation and Progression of Atherosclerosis and Potential Target for the Treatment of Cardiovascular Disease. *Front Immunol*. 2018; 9:706 <https://doi.org/10.3389/fimmu.2018.00706> PMID: 29719532
3. Elshabrawy HA, Chen Z, Volin MV, Ravella S, Virupannavar S, Shahrara S. The pathogenic role of angiogenesis in rheumatoid arthritis. *Angiogenesis*. 2015; 18(4):433–48 <https://doi.org/10.1007/s10456-015-9477-2> PMID: 26198292
4. Cai X, McGinnis JF. Diabetic Retinopathy: Animal Models, Therapies, and Perspectives. *J Diabetes Res*. 2016; 2016:3789217 <https://doi.org/10.1155/2016/3789217> PMID: 26881246
5. Carmeliet P. VEGF as a key mediator of angiogenesis in cancer. *Oncology*. 2005; 69 Suppl 3:4–10 <https://doi.org/10.1159/000088478> PMID: 16301830
6. Campochiaro PA. Ocular neovascularization. *J Mol Med (Berl)*. 2013; 91(3):311–21 <https://doi.org/10.1007/s00109-013-0993-5> PMID: 23329331
7. Aiello LP, Avery RL, Arrigg PG, Keyt BA, Jampel HD, Shah ST, et al. Vascular endothelial growth factor in ocular fluid of patients with diabetic retinopathy and other retinal disorders. *N Engl J Med*. 1994; 331(22):1480–7 <https://doi.org/10.1056/NEJM199412013312203> PMID: 7526212
8. Pe'er J, Folberg R, Itin A, Gnessin H, Hemo I, Keshet E. Upregulated expression of vascular endothelial growth factor in proliferative diabetic retinopathy. *Br J Ophthalmol*. 1996; 80(3):241–5 <https://doi.org/10.1136/bjo.80.3.241> PMID: 8703862
9. Lux A, Llacer H, Heussen FM, Joussen AM. Non-responders to bevacizumab (Avastin) therapy of chorioidal neovascular lesions. *Br J Ophthalmol*. 2007; 91(10):1318–22 <https://doi.org/10.1136/bjo.2006.113902> PMID: 17537784
10. Tranos P, Vacalis A, Asteriadis S, Koukoulas S, Vachtsevanos A, Perganta G, et al. Resistance to anti-vascular endothelial growth factor treatment in age-related macular degeneration. *Drug Des Devel Ther*. 2013; 7:485–90 <https://doi.org/10.2147/DDDT.S43470> PMID: 23818759
11. Binder S. Loss of reactivity in intravitreal anti-VEGF therapy: tachyphylaxis or tolerance? *Br J Ophthalmol*. 2012; 96(1):1–2 <https://doi.org/10.1136/bjophthalmol-2011-301236> PMID: 22157632
12. Shi L, Ko ML, Abbott LC, Ko GY. Identification of Peptide Lv, a novel putative neuropeptide that regulates the expression of L-type voltage-gated calcium channels in photoreceptors. *PLoS One*. 2012; 7(8):e43091 <https://doi.org/10.1371/journal.pone.0043091> PMID: 22912796
13. Shi L, Ko S, Ko ML, Kim AJ, Ko GY. Peptide Lv augments L-type voltage-gated calcium channels through vascular endothelial growth factor receptor 2 (VEGFR2) signaling. *Biochim Biophys Acta*. 2015; 1853(5):1154–64 <https://doi.org/10.1016/j.bbamcr.2015.02.007> PMID: 25698653

14. Shi L, Zhao M, Abbey CA, Tsai SH, Xie W, Pham D, et al. Newly Identified Peptide, Peptide Lv, Promotes Pathological Angiogenesis. *J Am Heart Assoc.* 2019; 8(22):e013673 <https://doi.org/10.1161/JAHA.119.013673> PMID: 31698979
15. Hein TW, Rosa RH Jr., Ren Y, Xu W, Kuo L. VEGF Receptor-2-Linked PI3K/Calpain/SIRT1 Activation Mediates Retinal Arteriolar Dilations to VEGF and Shear Stress. *Invest Ophthalmol Vis Sci.* 2015; 56(9):5381–9 <https://doi.org/10.1167/iovs15-16950> PMID: 26284543
16. Hammes HP. Diabetic retinopathy: hyperglycaemia, oxidative stress and beyond. *Diabetologia.* 2018; 61(1):29–38 <https://doi.org/10.1007/s00125-017-4435-8> PMID: 28942458
17. Hammes HP, Lin J, Bretzel RG, Brownlee M, Breier G. Upregulation of the vascular endothelial growth factor/vascular endothelial growth factor receptor system in experimental background diabetic retinopathy of the rat. *Diabetes.* 1998; 47(3):401–6 <https://doi.org/10.2337/diabetes.47.3.401> PMID: 9519746
18. Dabisch PA, Liles JT, Taylor JT, Sears BW, Saenz R, Kadowitz PJ. Role of potassium channels in the nitric oxide-independent vasodilator response to acetylcholine. *Pharmacol Res.* 2004; 49(3):207–15 <https://doi.org/10.1016/j.phrs.2003.09.010> PMID: 14726215
19. Hein TW, Yuan Z, Rosa RH Jr., Kuo L. Requisite roles of A2A receptors, nitric oxide, and KATP channels in retinal arteriolar dilation in response to adenosine. *Invest Ophthalmol Vis Sci.* 2005; 46(6):2113–9 <https://doi.org/10.1167/iovs.04-1438> PMID: 15914631
20. Michaelis UR, Fleming I. From endothelium-derived hyperpolarizing factor (EDHF) to angiogenesis: Epoxyeicosatrienoic acids (EETs) and cell signaling. *Pharmacol Ther.* 2006; 111(3):584–95 <https://doi.org/10.1016/j.pharmthera.2005.11.003> PMID: 16380164
21. Adams RH, Alitalo K. Molecular regulation of angiogenesis and lymphangiogenesis. *Nat Rev Mol Cell Biol.* 2007; 8(6):464–78 <https://doi.org/10.1038/nrm2183> PMID: 17522591
22. Shepherd JT, Katusic ZS. Endothelium-derived vasoactive factors: I. Endothelium-dependent relaxation. *Hypertension.* 1991; 18(5 Suppl):III76–85 https://doi.org/10.1161/01.hyp.18.5_suppl.iii76 PMID: 1937690
23. Edwards G, Feletou M, Weston AH. Endothelium-derived hyperpolarising factors and associated pathways: a synopsis. *Pflugers Arch.* 2010; 459(6):863–79 <https://doi.org/10.1007/s00424-010-0817-1> PMID: 20383718
24. Edwards G, Dora KA, Gardener MJ, Garland CJ, Weston AH. K⁺ is an endothelium-derived hyperpolarizing factor in rat arteries. *Nature.* 1998; 396(6708):269–72 <https://doi.org/10.1038/24388> PMID: 9834033
25. Grgic I, Kaistha BP, Hoyer J, Kohler R. Endothelial Ca⁺-activated K⁺ channels in normal and impaired EDHF-dilator responses—relevance to cardiovascular pathologies and drug discovery. *Br J Pharmacol.* 2009; 157(4):509–26 <https://doi.org/10.1111/j.1476-5381.2009.00132.x> PMID: 19302590
26. Grgic I, Eichler I, Heinau P, Si H, Brakemeier S, Hoyer J, et al. Selective blockade of the intermediate-conductance Ca²⁺-activated K⁺ channel suppresses proliferation of microvascular and macrovascular endothelial cells and angiogenesis in vivo. *Arterioscler Thromb Vasc Biol.* 2005; 25(4):704–9 <https://doi.org/10.1161/01.ATV.0000156399.12787.5c> PMID: 15662023
27. Yang H, Li X, Ma J, Lv X, Zhao S, Lang W, et al. Blockade of the intermediate-conductance Ca(2+)-activated K⁺ channel inhibits the angiogenesis induced by epidermal growth factor in the treatment of corneal alkali burn. *Exp Eye Res.* 2013; 110:76–87 <https://doi.org/10.1016/j.exer.2013.02.015> PMID: 23482085
28. Ledoux J, Werner ME, Brayden JE, Nelson MT. Calcium-activated potassium channels and the regulation of vascular tone. *Physiology (Bethesda).* 2006; 21:69–78 <https://doi.org/10.1152/physiol.00040.2005> PMID: 16443824
29. Aziz Q, Thomas AM, Gomes J, Ang R, Sones WR, Li Y, et al. The ATP-sensitive potassium channel subunit, Kir6.1, in vascular smooth muscle plays a major role in blood pressure control. *Hypertension.* 2014; 64(3):523–9 <https://doi.org/10.1161/HYPERTENSIONAHA.114.03116> PMID: 24914196
30. Aziz Q, Li Y, Anderson N, Ojake L, Tsisanova E, Tinker A. Molecular and functional characterization of the endothelial ATP-sensitive potassium channel. *J Biol Chem.* 2017; 292(43):17587–97 <https://doi.org/10.1074/jbc.M117.810325> PMID: 28893911
31. Hein TW, Xu W, Kuo L. Dilation of retinal arterioles in response to lactate: role of nitric oxide, guanylyl cyclase, and ATP-sensitive potassium channels. *Invest Ophthalmol Vis Sci.* 2006; 47(2):693–9 <https://doi.org/10.1167/iovs.05-1224> PMID: 16431969
32. Fan JS, Palade P. Perforated patch recording with beta-escin. *Pflugers Arch.* 1998; 436(6):1021–3 <https://doi.org/10.1007/pl00008086> PMID: 9799421
33. Huang CC, Ko ML, Ko GY. A new functional role for mechanistic/mammalian target of rapamycin complex 1 (mTORC1) in the circadian regulation of L-type voltage-gated calcium channels in avian cone

- photoreceptors. *PLoS One*. 2013; 8(8):e73315 <https://doi.org/10.1371/journal.pone.0073315> PMID: 23977383
34. Ko GY, Shi L, Ko ML. Circadian regulation of ion channels and their functions. *J Neurochem*. 2009; 110(4):1150–69 <https://doi.org/10.1111/j.1471-4159.2009.06223.x> PMID: 19549279
 35. Li W, Halling DB, Hall AW, Aldrich RW. EF hands at the N-lobe of calmodulin are required for both SK channel gating and stable SK-calmodulin interaction. *J Gen Physiol*. 2009; 134(4):281–93 <https://doi.org/10.1085/jgp.200910295> PMID: 19752189
 36. Jenkins DP, Yu W, Brown BM, Lojknier LD, Wulff H. Development of a QPatch automated electrophysiology assay for identifying KCa3.1 inhibitors and activators. *Assay Drug Dev Technol*. 2013; 11(9–10):551–60 <https://doi.org/10.1089/adt.2013.543> PMID: 24351043
 37. Papassotiriou J, Kohler R, Prenen J, Krause H, Akbar M, Eggermont J, et al. Endothelial K(+) channel lacks the Ca(2+) sensitivity-regulating beta subunit. *FASEB J*. 2000; 14(7):885–94. PMID: 10783142
 38. Schoenmakers TJ, Visser GJ, Flik G, Theuvsen AP. CHELATOR: an improved method for computing metal ion concentrations in physiological solutions. *Biotechniques*. 1992; 12(6):870–4, 6–9. PMID: 1642895
 39. Mosmann T. Rapid colorimetric assay for cellular growth and survival: application to proliferation and cytotoxicity assays. *J Immunol Methods*. 1983; 65(1–2):55–63 [https://doi.org/10.1016/0022-1759\(83\)90303-4](https://doi.org/10.1016/0022-1759(83)90303-4) PMID: 6606682
 40. Janes KA. An analysis of critical factors for quantitative immunoblotting. *Sci Signal*. 2015; 8(371):rs2 <https://doi.org/10.1126/scisignal.2005966> PMID: 25852189
 41. Livak KJ, Schmittgen TD. Analysis of relative gene expression data using real-time quantitative PCR and the 2⁻(Delta Delta C(T)) Method. *Methods*. 2001; 25(4):402–8 <https://doi.org/10.1006/meth.2001.1262> PMID: 11846609
 42. Hood JD, Meininger CJ, Ziche M, Granger HJ. VEGF upregulates eNOS message, protein, and NO production in human endothelial cells. *Am J Physiol*. 1998; 274(3):H1054–8 <https://doi.org/10.1152/ajpheart.1998.274.3.H1054> PMID: 9530221
 43. Conway EM, Collen D, Carmeliet P. Molecular mechanisms of blood vessel growth. *Cardiovasc Res*. 2001; 49(3):507–21 [https://doi.org/10.1016/s0008-6363\(00\)00281-9](https://doi.org/10.1016/s0008-6363(00)00281-9) PMID: 11166264
 44. Nilius B, Droogmans G. Ion channels and their functional role in vascular endothelium. *Physiol Rev*. 2001; 81(4):1415–59 <https://doi.org/10.1152/physrev.2001.81.4.1415> PMID: 11581493
 45. Seki T, Goto K, Kiyohara K, Kansui Y, Murakami N, Haga Y, et al. Downregulation of Endothelial Transient Receptor Potential Vanilloid Type 4 Channel and Small-Conductance of Ca²⁺-Activated K⁺ Channels Underpins Impaired Endothelium-Dependent Hyperpolarization in Hypertension. *Hypertension*. 2017; 69(1):143–53 <https://doi.org/10.1161/HYPERTENSIONAHA.116.07110> PMID: 27872234
 46. Earley S, Pauyo T, Drapp R, Tavares MJ, Liedtke W, Brayden JE. TRPV4-dependent dilation of peripheral resistance arteries influences arterial pressure. *Am J Physiol Heart Circ Physiol*. 2009; 297(3):H1096–102 <https://doi.org/10.1152/ajpheart.00241.2009> PMID: 19617407
 47. Sato A, Terata K, Miura H, Toyama K, Loberiza FR Jr., Hatoum OA, et al. Mechanism of vasodilation to adenosine in coronary arterioles from patients with heart disease. *Am J Physiol Heart Circ Physiol*. 2005; 288(4):H1633–40 <https://doi.org/10.1152/ajpheart.00575.2004> PMID: 15772334
 48. Costa F, Biaggioni I. Role of nitric oxide in adenosine-induced vasodilation in humans. *Hypertension*. 1998; 31(5):1061–4 <https://doi.org/10.1161/01.hyp.31.5.1061> PMID: 9576114
 49. Clifford PS. Local control of blood flow. *Adv Physiol Educ*. 2011; 35(1):5–15 <https://doi.org/10.1152/advan.00074.2010> PMID: 21385995
 50. Krogh A. The number and distribution of capillaries in muscles with calculations of the oxygen pressure head necessary for supplying the tissue. *J Physiol*. 1919; 52(6):409–15 <https://doi.org/10.1113/jphysiol.1919.sp001839> PMID: 16993405
 51. Krogh A. The supply of oxygen to the tissues and the regulation of the capillary circulation. *J Physiol*. 1919; 52(6):457–74 <https://doi.org/10.1113/jphysiol.1919.sp001844> PMID: 16993410
 52. Ashina K, Tsubosaka Y, Kobayashi K, Omori K, Murata T. VEGF-induced blood flow increase causes vascular hyper-permeability in vivo. *Biochem Biophys Res Commun*. 2015; 464(2):590–5 <https://doi.org/10.1016/j.bbrc.2015.07.014> PMID: 26163262
 53. Crawford Y, Kasman I, Yu L, Zhong C, Wu X, Modrusan Z, et al. PDGF-C mediates the angiogenic and tumorigenic properties of fibroblasts associated with tumors refractory to anti-VEGF treatment. *Cancer Cell*. 2009; 15(1):21–34 <https://doi.org/10.1016/j.ccr.2008.12.004> PMID: 19111878
 54. Pili R, Chang J, Partis RA, Mueller RA, Chrest FJ, Passaniti A. The alpha-glucosidase I inhibitor castanospermine alters endothelial cell glycosylation, prevents angiogenesis, and inhibits tumor growth. *Cancer Res*. 1995; 55(13):2920–6. PMID: 7540952

55. Takahashi H, Shibuya M. The vascular endothelial growth factor (VEGF)/VEGF receptor system and its role under physiological and pathological conditions. *Clin Sci (Lond)*. 2005; 109(3):227–41 <https://doi.org/10.1042/CS20040370> PMID: 16104843
56. Tugues S, Koch S, Gualandi L, Li X, Claesson-Welsh L. Vascular endothelial growth factors and receptors: anti-angiogenic therapy in the treatment of cancer. *Mol Aspects Med*. 2011; 32(2):88–111 <https://doi.org/10.1016/j.mam.2011.04.004> PMID: 21565214
57. Klein R, Myers CE, Klein BE. Vasodilators, blood pressure-lowering medications, and age-related macular degeneration: the Beaver Dam Eye Study. *Ophthalmology*. 2014; 121(8):1604–11 <https://doi.org/10.1016/j.ophtha.2014.03.005> PMID: 24793737
58. Stefansson E, Landers MB 3rd, Wolbarsht ML. Oxygenation and vasodilatation in relation to diabetic and other proliferative retinopathies. *Ophthalmic Surg*. 1983; 14(3):209–26. PMID: 6190118
59. Kolluru GK, Sinha S, Majumder S, Muley A, Siamwala JH, Gupta R, et al. Shear stress promotes nitric oxide production in endothelial cells by sub-cellular delocalization of eNOS: A basis for shear stress mediated angiogenesis. *Nitric Oxide*. 2010; 22(4):304–15 <https://doi.org/10.1016/j.niox.2010.02.004> PMID: 20188204
60. Galie PA, Nguyen DH, Choi CK, Cohen DM, Janmey PA, Chen CS. Fluid shear stress threshold regulates angiogenic sprouting. *Proc Natl Acad Sci U S A*. 2014; 111(22):7968–73 <https://doi.org/10.1073/pnas.1310842111> PMID: 24843171
61. Uchida C, Nwadozi E, Hasanee A, Olenich S, Olfert IM, Haas TL. Muscle-derived vascular endothelial growth factor regulates microvascular remodelling in response to increased shear stress in mice. *Acta Physiol (Oxf)*. 2015; 214(3):349–60 <https://doi.org/10.1111/apha.12463> PMID: 25659833
62. da Silva AV, Gouvea SA, da Silva AP, Bortolon S, Rodrigues AN, Abreu GR, et al. Changes in retinal microvascular diameter in patients with diabetes. *Int J Gen Med*. 2015; 8:267–73 <https://doi.org/10.2147/IJGM.S83749> PMID: 26345217
63. Leclaire-Collet A, Audo I, Aout M, Girmens JF, Sofroni R, Erginay A, et al. Evaluation of retinal function and flicker light-induced retinal vascular response in normotensive patients with diabetes without retinopathy. *Invest Ophthalmol Vis Sci*. 2011; 52(6):2861–7 <https://doi.org/10.1167/iov.10-5960> PMID: 21282578
64. Nguyen TT, Kawasaki R, Wang JJ, Kreis AJ, Shaw J, Vilser W, et al. Flicker light-induced retinal vasodilation in diabetes and diabetic retinopathy. *Diabetes Care*. 2009; 32(11):2075–80 <https://doi.org/10.2337/dc09-0075> PMID: 19641162
65. Hartenstein S, Muller B, Metze B, Czernik C, Bührer C. Blood flow assessed by color Doppler imaging in retinopathy of prematurity. *J Perinatol*. 2015; 35(9):745–7 <https://doi.org/10.1038/jp.2015.45> PMID: 25950917
66. Matsumoto T, Itokawa T, Shiba T, Tomita M, Hine K, Mizukaki N, et al. Decreased ocular blood flow after photocoagulation therapy in neonatal retinopathy of prematurity. *Jpn J Ophthalmol*. 2017; 61(6):484–93 <https://doi.org/10.1007/s10384-017-0536-7> PMID: 28932922
67. Matsumoto T, Saito Y, Itokawa T, Shiba T, Oba MS, Takahashi H, et al. Retinal VEGF levels correlate with ocular circulation measured by a laser speckle-micro system in an oxygen-induced retinopathy rat model. *Graefes Arch Clin Exp Ophthalmol*. 2017; 255(10):1981–90 <https://doi.org/10.1007/s00417-017-3756-0> PMID: 28791491
68. Matsumoto T, Itokawa T, Shiba T, Tomita M, Hine K, Mizukaki N, et al. Intravitreal bevacizumab treatment reduces ocular blood flow in retinopathy of prematurity: a four-case report. *Graefes Arch Clin Exp Ophthalmol*. 2018; 256(11):2241–7 <https://doi.org/10.1007/s00417-018-4063-0> PMID: 29980917
69. Rebhun CB, Moulton EM, Ploner SB, Neto CM, Alibhai AY, Schottenhamml J, et al. Analyzing relative blood flow speeds in choroidal neovascularization using variable interscan time analysis OCT angiography. *Ophthalmol Retina*. 2018; 2(4):306–19 <https://doi.org/10.1016/j.oret.2017.08.013> PMID: 31047240
70. Spaide RF. Optical coherence tomography angiography signs of vascular abnormalization with antiangiogenic therapy for choroidal neovascularization. *Am J Ophthalmol*. 2015; 160(1):6–16 <https://doi.org/10.1016/j.ajo.2015.04.012> PMID: 25887628
71. Mukai M, Uchida K, Okubo T, Takano S, Matsumoto T, Satoh M, et al. Regulation of Tumor Necrosis Factor-alpha by Peptide Lv in Bone Marrow Macrophages and Synovium. *Front Med (Lausanne)*. 2021; 8:702126 <https://doi.org/10.3389/fmed.2021.702126> PMID: 34386509