

ERRATUM

Open Access



Erratum to: Maternal allergic disease history affects childhood allergy development through impairment of neonatal regulatory T-cells

Shan-shan Meng^{1,2}, Rong Gao¹, Bing-di Yan¹, Jin Ren¹, Fei Wu³, Peng Chen⁴, Jie Zhang¹, Li-fang Wang³, Yuan-ming Xiao³ and Jing Liu^{1*}

n.b. The errors and associated corrections described in this document concerning the original manuscript were accountable to the production department handling this manuscript, and thus are no fault of the authors of this paper. Additionally, the online manuscript has now been updated with these corrections accordingly.

In the original publication of this article [1], figures 1 and 2 were inadvertently swapped. Figure 2 should therefore have been in the place of Figure 1 and vice versa. Please see below for the correct figure labels.

Author details

¹Department of Respiratory Medicine, The Second Hospital of Jilin University, No.218, Ziqiang Street, Nanguan District, Changchun, China. ²Department of Critical Care Medicine, Zhongda Hospital, School of Medicine, Southeast University, Nanjing, China. ³Department of Obstetrics and Gynecology, The Second Hospital of Jilin University, Changchun, China. ⁴Department of Pediatrics, The Second Hospital of Jilin University, Changchun, China.

Received: 20 September 2016 Accepted: 27 September 2016

Published online: 21 October 2016

Reference

1. Meng, et al. Maternal allergic disease history affects childhood allergy development through impairment of neonatal regulatory T-cells. *Respir Res.* 2016;17:114. doi:10.1186/s12931-016-0430-8.

* Correspondence: liujing020901@163.com

¹Department of Respiratory Medicine, The Second Hospital of Jilin University, No.218, Ziqiang Street, Nanguan District, Changchun, China
Full list of author information is available at the end of the article



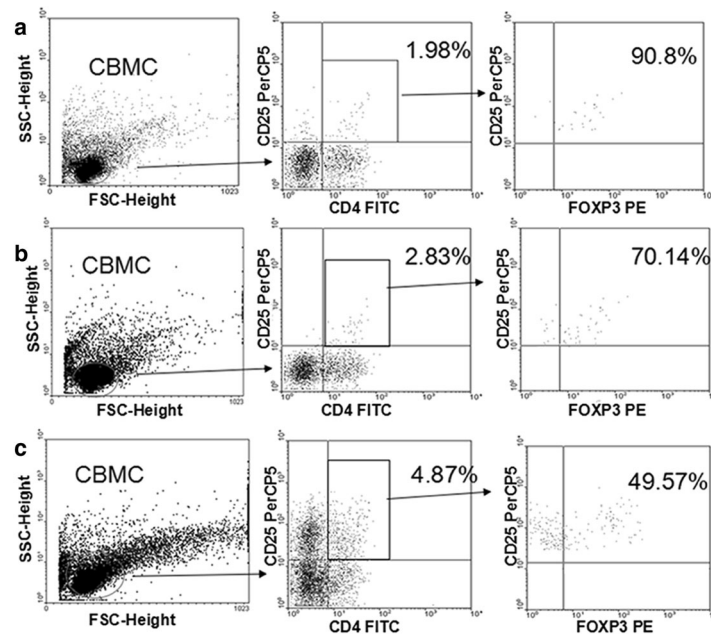


Fig. 1 Percent of CD4⁺CD25⁺FOXP3⁺ T cells in unstimulated and stimulated CBMCs. CD4⁺CD25⁺FOXP3⁺ T cell populations were determined by fluorescent antibody staining and FACS. **a** Unstimulated CD4⁺CD25⁺FOXP3⁺ T cells represented 1.80 % of the CBMC population (=90.8 % * 1.98 %). **b** CD4⁺CD25⁺FOXP3⁺ T cells represented 1.98 % of the LPA-stimulated CBMC population (=70.14 % * 2.83 %). **c** CD4⁺CD25⁺FOXP3⁺ T cells represented 2.41 % of the PPG-stimulated CBMC population (=49.57 % * 4.87 %). See Methods for details on CBMC culturing, stimulation, and fluorescence staining

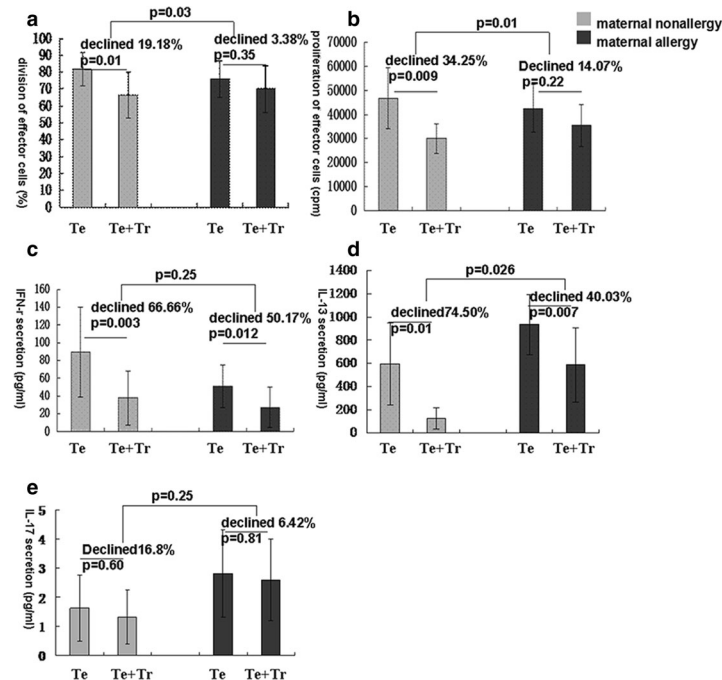


Fig. 2 In vitro suppression of effector T cells by neonate Tregs. **a** Effector T cell division in the presence and absence of Tregs as determined by CFSE staining. **b** Effector T cell proliferation in the presence and absence of Tregs as determined by ³H-thymidine incorporation. **c-e** Effector T cell secretion of IFN- γ , IL-13, and IL-17 in the presence and absence of Tregs as measured by LUMINEX. Te: effector T cells; Tr: regulatory T cells (n = 8)