



Since January 2020 Elsevier has created a COVID-19 resource centre with free information in English and Mandarin on the novel coronavirus COVID-19. The COVID-19 resource centre is hosted on Elsevier Connect, the company's public news and information website.

Elsevier hereby grants permission to make all its COVID-19-related research that is available on the COVID-19 resource centre - including this research content - immediately available in PubMed Central and other publicly funded repositories, such as the WHO COVID database with rights for unrestricted research re-use and analyses in any form or by any means with acknowledgement of the original source. These permissions are granted for free by Elsevier for as long as the COVID-19 resource centre remains active.

## OBSTETRICS

# Coronavirus disease 2019 infection and placental histopathology in women delivering at term



Elizabeth T. Patberg, MD; Tracy Adams, DO; Patricia Rekawek, MD; Sevan A. Vahanian, MD; Meredith Akerman, MS; Andrea Hernandez, DO; Amy V. Rapkiewicz, MD; Louis Ragolia, PhD; Genevieve Sicuranza, MD; Martin R. Chavez, MD; Anthony M. Vintzileos, MD; Poonam Khullar, MD

**BACKGROUND:** There is a paucity of data describing the effects of coronavirus disease 2019 on placental pathology, especially in asymptomatic patients. Although the pathophysiology of coronavirus disease 2019 is not completely understood, there is emerging evidence that it causes a severe systemic inflammatory response and results in a hypercoagulable state with widespread microthrombi. We hypothesized that it is plausible that a similar disease process may occur in the fetal-maternal unit.

**OBJECTIVE:** This study aimed to determine whether coronavirus disease 2019 in term patients admitted to labor and delivery, including women without coronavirus disease 2019 symptomatology, is associated with increased placental injury compared with a cohort of coronavirus disease 2019—negative controls.

**STUDY DESIGN:** This was a retrospective cohort study performed at NYU Winthrop Hospital between March 31, 2020, and June 17, 2020. During the study period, all women admitted to labor and delivery were routinely tested for severe acute respiratory syndrome coronavirus 2 regardless of symptomatology. The placental histopathologic findings of patients with coronavirus disease 2019 (n=77) who delivered a singleton gestation at term were compared with a control group of term patients without coronavirus disease 2019 (n=56). Controls were excluded if they had obstetrical or medical complications including fetal growth restriction, oligohydramnios, hypertension, diabetes, coagulopathy, or thrombophilia. Multivariable logistic regression models were performed for variables that were significant ( $P<.05$ ) in univariable analyses. A subgroup analysis was also performed comparing asymptomatic coronavirus disease 2019 cases with negative controls.

**RESULTS:** In univariable analyses, coronavirus disease 2019 cases were more likely to have evidence of fetal vascular malperfusion, that is, presence of avascular villi and mural fibrin deposition (32.5% [25/77] vs 3.6% [2/56],  $P<.0001$ ) and villitis of unknown etiology (20.8% [16/77] vs 7.1% [4/56],  $P=.030$ ). These findings persisted in a subgroup analysis of asymptomatic coronavirus disease 2019 cases compared with coronavirus disease 2019—negative controls. In a multivariable model adjusting for maternal age, race and ethnicity, mode of delivery, preeclampsia, fetal growth restriction, and oligohydramnios, the frequency of fetal vascular malperfusion abnormalities remained significantly higher in the coronavirus disease 2019 group (odds ratio, 12.63; 95% confidence interval, 2.40–66.40). Although the frequency of villitis of unknown etiology was more than double in coronavirus disease 2019 cases compared with controls, this did not reach statistical significance in a similar multivariable model (odds ratio, 2.11; 95% confidence interval, 0.50–8.97). All neonates of mothers with coronavirus disease 2019 tested negative for severe acute respiratory syndrome coronavirus 2 by polymerase chain reaction.

**CONCLUSION:** Despite the fact that all neonates born to mothers with coronavirus disease 2019 were negative for severe acute respiratory syndrome coronavirus 2 by polymerase chain reaction, we found that coronavirus disease 2019 in term patients admitted to labor and delivery is associated with increased rates of placental histopathologic abnormalities, particularly fetal vascular malperfusion and villitis of unknown etiology. These findings seem to occur even among asymptomatic term patients.

**Key words:** chronic intervillitis, fetal vascular malperfusion, malperfusion, maternal vascular, pregnancy, severe acute respiratory syndrome 2, villitis of unknown etiology

## Introduction

The impact of coronavirus disease 2019 (COVID-19) infection on pregnancy outcomes and its effects on the fetal-placental unit are not clearly established. The literature on COVID-19 in

pregnancy is mainly limited to case reports, case series, and systematic reviews<sup>1–13</sup> involving primarily symptomatic patients. The majority of these reports have focused on severity of maternal disease, mode of delivery, and possible vertical transmission of severe acute respiratory syndrome coronavirus 2 (SARS-CoV-2) to the neonate.

A recent report identified SARS-CoV-2 virions in placenta villi by means of electron microscopy,<sup>5</sup> and a more recent report documented that the virus can be transmitted to the fetus transplacentally with viral loads in the placenta being more than 2-fold higher than the maternal blood or nasopharynx.<sup>14</sup> This

high viral load in the placenta raises the possibility that the virus may elicit a placental inflammatory response, which could result in placental injury.

Although the pathophysiology of COVID-19 is not completely understood, there is emerging evidence that it can cause a severe systemic inflammatory response and may result in a hypercoagulable state with widespread microthrombi.<sup>15</sup> Evidence of venous thromboembolism and microangiopathic disease in almost every organ system, including lungs, kidney, heart, and brain, has been identified both clinically and by autopsy examination.<sup>15,16</sup> Thus, it is reasonable to

**Cite this article as:** Patberg ET, Adams T, Rekawek P, et al. Coronavirus disease 2019 infection and placental histopathology in women delivering at term. *Am J Obstet Gynecol* 2021;224:382.e1-18.

0002-9378/\$36.00

© 2020 Elsevier Inc. All rights reserved.

<https://doi.org/10.1016/j.ajog.2020.10.020>



Click [Video](#) under article title in Contents at [ajog.org](http://ajog.org)

## AJOG at a Glance

## Why was this study conducted?

There is limited information about the effects of coronavirus disease 2019 (COVID-19) on placental pathology, especially in asymptomatic patients.

## Key findings

Our findings suggest that there are more histopathologic abnormalities in term placentas from women with COVID-19, even among asymptomatic patients.

## What does this add to what is known?

The placental histopathologic findings of fetal vascular malperfusion (32.5% vs 3.6%;  $P<.0001$ ) and villitis of unknown etiology (20.8% vs 7.1%;  $P=.030$ ) were significantly more common among women with COVID-19 at term, even in asymptomatic patients.

this retrospective cohort study to compare placental pathology findings between women with COVID-19 at term vs a control group of COVID-19–negative term patients. A secondary objective was to determine the association between asymptomatic patients with COVID-19 and placental pathology.

## Materials and Methods

This was a retrospective cohort study involving women who delivered at term at NYU Winthrop Hospital. Pregnant patients diagnosed with COVID-19 who delivered a singleton gestation between March 31, 2020, and June 17, 2020 were identified. At the study institution, all women admitted to Labor and Delivery during

investigate if a similar disease process occurs in the fetal-maternal unit.

We hypothesize that the placentas of pregnant women may have histologic

evidence of injury because they could have harbored the virus for weeks before delivery, even if the women were asymptomatic. Therefore, we undertook

**TABLE 1**  
Demographic and clinical patient characteristics by COVID-19 status

Variable <sup>a</sup>	COVID-19 cases (n=77)	COVID-19 negative (n=56)	Pvalue
Age (y)	29.9±6.2	32.3±5.0	.02
BMI (kg/m <sup>2</sup> )	32.5±5.5	32.1±6.0	.65
Gestational age at delivery (wk)	39.1±1.0	39.3± 1.1	.17
Birthweight (g)	3280±402	3280±402	.31
APGAR (1-min)	9 (9–9)	9 (9–9)	.67
APGAR (5-min)	9 (9–9)	9 (9–9)	.69
NICU admission	6 (7.8)	6 (10.7)	.56
Para			
0	24 (31.2)	29 (51.8)	.13
1	29 (37.7)	17 (30.4)	
2	13 (16.9)	7 (12.5)	
3	9 (11.7)	2 (3.6)	
≥4	2 (3.5)	1 (1.8)	
Race/ethnicity			
White (non-Hispanic)	18 (23.4)	27 (48.2)	.001
Hispanic	43 (55.8)	10 (17.9)	
Black (non-Hispanic)	10 (13.0)	7 (12.5)	
Asian (includes Indian)	4 (5.2)	9 (16.1)	
Other (non-Hispanic)	2 (2.6)	3 (5.4)	
Mode of delivery			
Vaginal	57 (74.0)	14 (25.0)	<.0001
Cesarean	20 (26.0)	42 (75.0)	
Labor before delivery	7 (35.0)	20 (47.6)	.350

Patberg et al. Coronavirus disease 2019 placental pathology. *Am J Obstet Gynecol* 2021.

(continued)

**TABLE 1**  
**Demographic and clinical patient characteristics by COVID-19 status** (continued)

Variable <sup>a</sup>	COVID-19 cases (n=77)	COVID-19 negative (n=56)	P value
Oligohydramnios	6 (7.8)	0	.04
Fetal growth restriction	4 (5.2)	0	.14
Preeclampsia	5 (6.5)	0	.07
Diabetes			
Gestational	5 (6.5)	0	.02
Pregestational	2 (2.6)	0	

APGAR, appearance, pulse, grimace, activity, and respiration; BMI, body mass index; COVID-19, coronavirus disease 2019; NICU, neonatal intensive care unit.

<sup>a</sup> Data presented as number (percentage) except for age, BMI, and birthweight, which are presented as mean±standard deviation, and APGAR scores, which are presented as median (interquartile range).

Patberg et al. Coronavirus disease 2019 placental pathology. Am J Obstet Gynecol 2021.

**TABLE 2**  
**Comparison of placental histopathologic findings**

Variable <sup>a</sup>		COVID-19 cases (n=77)	COVID-19 negative (n=56)	P value
Placental weight	<10th percentile	7 (9.1)	7 (12.5)	.078
	10th–25th percentile	15 (19.5)	14 (25.0)	
	25th–50th percentile	25 (32.5)	9 (16.1)	
	50th–90th percentile	29 (37.7)	21 (37.5)	
	>90th percentile	1 (1.3)	5 (8.9)	
FVM (any feature)	Absent	52 (67.5)	54 (96.4)	<.0001
	Present	25 (32.5)	2 (3.6)	
Avascular villi	Absent	56 (72.7)	55 (98.2)	<.0001
	Present	21 (27.3)	1 (1.8)	
Mural fibrin deposition	Absent	69 (89.6)	55 (98.2)	.079
	Present	8 (10.4)	1 (1.8)	
Chorioamnionitis	Absent	58 (75.3)	45 (80.4)	.15
	Present, stage 1	15 (19.5)	5 (8.9)	
	Present, stage 2	4 (5.2)	6 (10.7)	
Chorioamnionitis fetal response	Absent	67 (87.0)	50 (89.3)	.069
	Present, stage 1	9 (11.7)	2 (3.6)	
	Present, stage 2	1 (1.3)	4 (7.1)	
Villitis of unknown etiology	Absent	61 (79.2)	52 (92.9)	.030
	Present	16 (20.8)	4 (7.1)	
Chronic intervillitis	Absent	74 (96.1)	56 (100)	.26
	Present	3 (3.9)	0	
Infarct	Absent	57 (74.0)	47 (83.9)	.17
	Present	20 (26.0)	9 (16.1)	
Hematoma	Absent	56 (72.7)	45 (80.3)	.31
	Present	21 (27.2)	11 (19.6)	

Patberg et al. Coronavirus disease 2019 placental pathology. Am J Obstet Gynecol 2021.

(continued)

TABLE 2

## Comparison of placental histopathologic findings (continued)

Variable <sup>a</sup>		COVID-19 cases (n=77)	COVID-19 negative (n=56)	P-value
Meconium	Absent	61 (79.2)	52 (92.9)	.030
	Present	16 (20.8)	4 (7.1)	
Decidual vasculopathy	Absent	74 (96.1)	56 (100)	.51
	Present—OC	2 (2.6)	0	
	Present—PM	1 (1.3)	0	
No placental lesions		11 (14.3)	27 (48.2)	<.0001

COVID-19, coronavirus disease 2019; FVM, fetal vascular malperfusion; OC, occlusive; PM, persistent muscularization.

<sup>a</sup> Data presented as number (percentage).

Patberg et al. Coronavirus disease 2019 placental pathology. Am J Obstet Gynecol 2021.

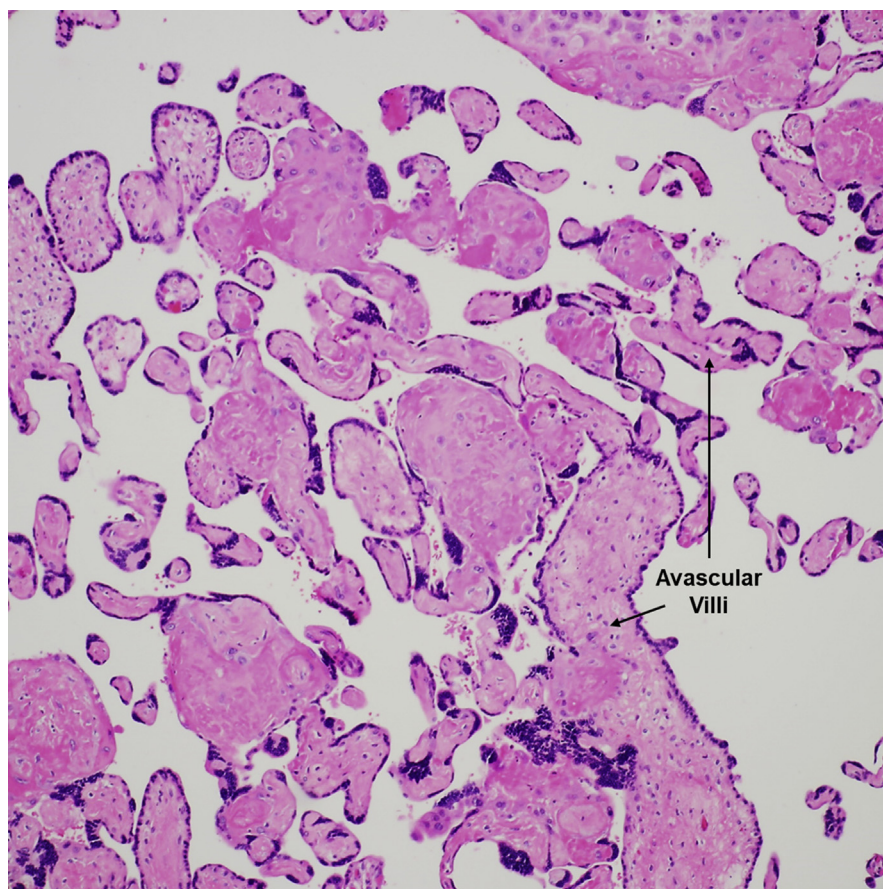
this time period were routinely tested via nasopharyngeal polymerase chain reaction (PCR) for SARS-CoV-2, regardless of symptomatology.<sup>17</sup> The placentas of all patients with positive COVID-19 testing were sent for gross

and microscopic histopathologic examination. COVID-19 cases were excluded from the study if they delivered at <37 weeks gestation. A control group was identified from COVID-19–negative deliveries during the same period of a singleton gestation at ≥37 weeks with placental histopathology available for review. Patients in the control group were excluded if they had obstetrical or medical complications including fetal growth restriction, oligohydramnios, chronic hypertension, pregnancy-induced hypertension (gestational hypertension or preeclampsia, including postpartum), preexisting or gestational diabetes, coagulopathy, or thrombophilia. Chart review was performed using electronic medical records (EMRs) to obtain relevant demographic and clinical information. This study was approved by the New York University Institutional Review Board.

Testing for COVID-19 infection was performed by means of SARS-CoV-2 PCR of a nasopharyngeal swab, using the Cepheid Xpert Xpress (Cepheid, Sunnyvale, CA) SARS-CoV-2 RT-PCR assay under emergency use authorization as per our institution's policy. As per the manufacturer, the analytical sensitivity and specificity are reported as 100% (87/87 samples) and 100% (30/30 samples), respectively, with a limit of detection of 250 copies/mL or 0.0100 plaque-forming units/mL.

FIGURE 1

## Fetal vascular malperfusion



Large aggregate (>10 villi) of avascular villi, rimmed by preserved syncytiotrophoblasts, with total loss of villous capillaries and hyaline fibrosis of the stroma. H&E stain ×200.

H&E, hematoxylin and eosin.

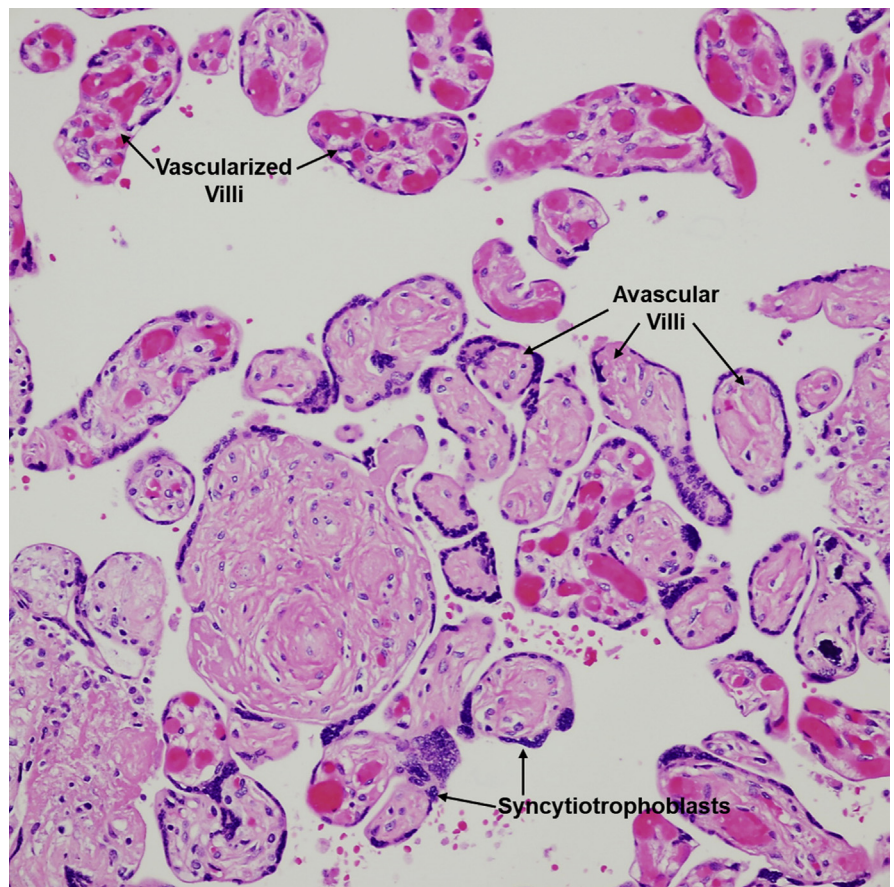
Patberg et al. Coronavirus disease 2019 placental pathology. Am J Obstet Gynecol 2021.

The placentas were submitted to the pathology laboratory without fixative. The placentas from COVID-19 cases were fixed in 10% buffered formalin for 72 hours, following which they were examined and measurements were taken. They were sectioned at 5 mm intervals and 3 mm–thick tissue sections were taken, including 2 from each quadrant, 2 cross sections of the umbilical cord and membranes, and any lesions. The control placentas were sectioned according to routine institutional protocol, which follows the guidelines put forth by the Amsterdam Placental Workshop Group Consensus Statement.<sup>18</sup> Specifically, a minimum of 3 sections of placenta parenchyma were submitted, plus 1 block containing membranes and 2 cross sections of cord, plus additional sections when gross lesions are identified.

The tissue blocks were processed in a vasoactive intestinal polypeptide tissue processor (Skaura Tissue-Tek VIP, Torrance, CA). The tissue was then paraffin-embedded and sectioned, baked, and stained with hematoxylin and eosin in a Sakura Tissue-Tek Prisma stainer (Torrance, CA). For selected cases where villitis of unknown etiology or chronic intervillitis was identified, an immunohistochemistry stain for CD3 and CD68 was performed to confirm the presence of T-cell lymphocytic infiltrate in the villous or intervillous space. In addition, 4  $\mu\text{m}$ –thick sections were obtained from paraffin-embedded tissue blocks. They were deparaffinized and then rehydrated with xylene and graded alcohols. The tissue slides and appropriate positive and negative controls were stained. Immunohistochemical staining was performed on a Ventana BenchMark Ultra (Roche, Basel, Switzerland) using Optiview DAB IHC detection kit (Ventana Medical Systems, Tucson, Arizona). Antigen retrieval was performed in 95°C for 64 minutes. CD68 primary antibody (clone number, KP-1) and CD3 primary antibody (clone number, 2GV6 rabbit monoclonal antibody) were obtained from Ventana Medical Systems. The slides were counterstained with hematoxylin.

Microscopic examination was performed by a single pathologist for all

**FIGURE 2**  
Fetal vascular malperfusion



Intermediate-sized aggregate of villi, rimmed by preserved syncytiotrophoblasts, with total loss of villous capillaries and hyaline fibrosis of the stroma. Well-vascularized villi are seen in the upper portion of the figure; a few are scattered in-between the avascular villi. H&E stain  $\times 200$ .

H&E, hematoxylin and eosin.

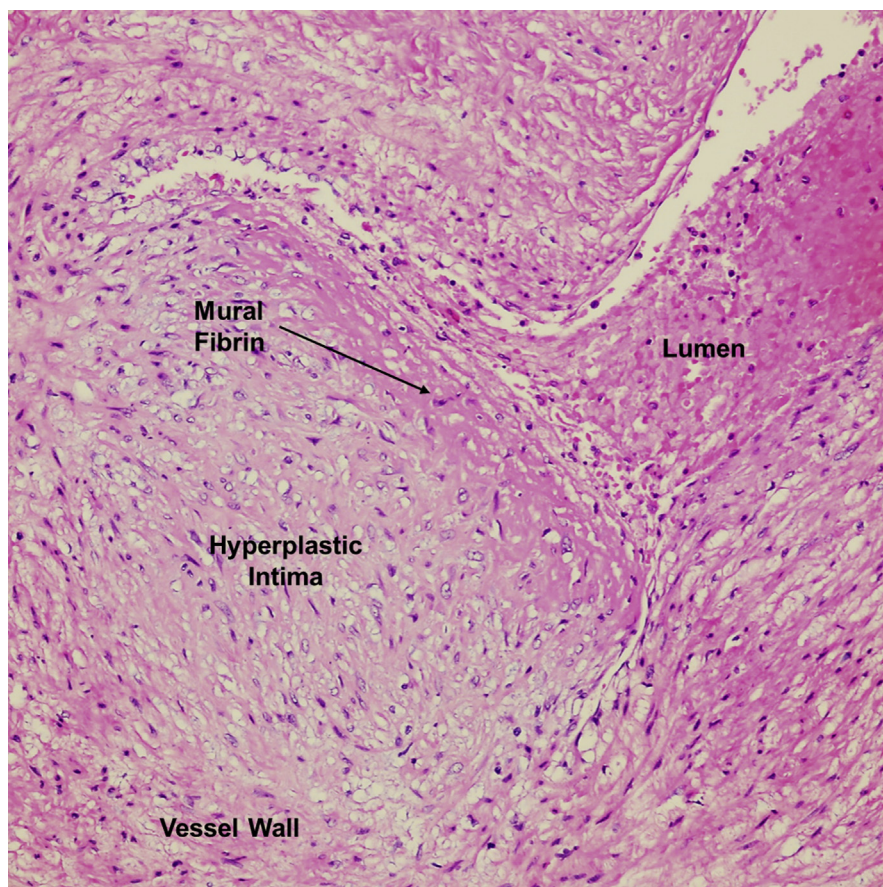
Patberg et al. Coronavirus disease 2019 placental pathology. *Am J Obstet Gynecol* 2021.

placentas from COVID-19 cases (P.K.), and by 1 of 3 pathologists for the control placentas (P.K., V.D., A.H.). The pathologists were not blinded to clinical information, including COVID-19 status. The findings recorded for the study were identical to that provided to the obstetrician-gynecologist for clinical purposes. Histopathologic lesions were categorized according to the 2016 Amsterdam criteria.<sup>18</sup> A total of 71 neonates born to mothers with COVID-19 had test results available in the EMR for SARS-CoV-2 via PCR of nasal swabs using Cepheid Xpert Xpress.

Subsequently, we performed a second review on a subset of 26 COVID-19

placentas and 21 control placentas to assess interobserver reliability. Representative slides from each placenta were independently reviewed by the above 3 pathologists (P.K., V.D., A.H.) to assess for the presence or absence of the following: fetal vascular malperfusion with avascular villi, high grade; fetal vascular malperfusion with avascular villi, low grade; fetal vascular malperfusion with mural fibrin deposition; villitis of unknown etiology, high grade; and villitis of unknown etiology, low grade. The pathologists were blinded to COVID-19 status during the rereview and the previously collected data were not changed by the results of this interobserver reliability assessment.

**FIGURE 3**  
**Intramural fibrin deposition in a stem villous vessel**



Vessel with an area of eccentric intimal hyperplasia and subendothelial fibrin deposition. Blood is seen in the lumen. H&E stain  $\times 400$ .

H&E, hematoxylin and eosin.

Patberg et al. Coronavirus disease 2019 placental pathology. *Am J Obstet Gynecol* 2021.

### Statistical analysis

Descriptive statistics (mean $\pm$ standard deviation or median [25th–75th percentiles]) for continuous variables; frequencies and percentages for categorical variables) were calculated separately by group (cases vs controls). Groups were compared using the chi-square test or Fisher exact test, as deemed appropriate, for categorical variables and the 2 sample *t*-test or Mann-Whitney test for continuous data.

The interrater reliability for 5 classes of placental histopathologic lesions was calculated using Gwet's first-order agreement coefficient ( $AC_1$ ).<sup>19</sup> The  $AC_1$  coefficient was chosen because it overcomes some of the inherent weakness in

the Kappa calculation and can adjust for both chance agreement and misclassification errors, which Kappa statistics do not allow.<sup>20</sup> The  $AC_1$  can be interpreted using the following guidelines by Landis-Koch Benchmark<sup>21</sup>: 0.8 to 1.0=almost perfect; 0.6 to 0.8=substantial; 0.4 to 0.6=moderate; 0.2 to 0.4=slight; 0 to 0.2=poor.

A total of 2 separate multivariable logistic regression analyses were performed for the outcomes of fetal vascular malperfusion and villitis of unknown etiology. Model 1 adjusted for all variables that were significant ( $P<.05$ ) in the univariate analyses and Model 2 excluded those factors that could be in the causative pathway, such

as preeclampsia, fetal growth restriction, and oligohydramnios (as feasible based on sample size). Preexisting and gestational diabetes were not adjusted for in these models owing to inadequate numbers. A numeric measure of the accuracy of the model was obtained from the area under the curve (AUC), where an area of 1.0 signifies near perfect accuracy, whereas an area of  $<.5$  indicates that the model is worse than just flipping a coin. The following was used as a guide for AUC: 0.9 to 1.0, excellent; 0.8 to 0.9, very good; 0.7 to 0.8, good; 0.6 to 0.7, average; and 0.5 to 0.6, poor. The Hosmer-Lemeshow goodness of fit test was also used to test how well each model fits the data. Results from the multivariable logistic regression models are reported as odds ratios (ORs) with their corresponding 95% confidence intervals (CIs).

For the secondary objective, controls were compared with asymptomatic COVID-19 cases. Chi-square test or Fisher exact test, as deemed appropriate, was used to compare these 2 groups for pathologic outcomes. A result was considered statistically significant at the  $P<.05$  level of significance. All analyses were performed using SAS version 9.4 (SAS Institute Inc, Cary, NC).

### Results

A total of 77 COVID-19 cases and 56 COVID-19–negative controls were included in the study. A total of 71 neonates born to mothers with COVID-19 had available test results for SARS-CoV-2 via nasopharyngeal PCR and all were negative. Demographic and clinical variables for each group are presented in Table 1. COVID-19 cases were significantly more likely to be younger (29.9 years vs 32.2 years,  $P=.02$ ), Hispanic (55.8% [43/77] vs 17.6% [10/56],  $P=.001$ ), and deliver vaginally (74% [57/77] vs 25% [14/56],  $P<.0001$ ) than controls. The majority of study patients (67/77, 87%) were asymptomatic; the remaining 10 patients had mild COVID symptomatology including fever, cough, upper respiratory infection symptoms, and shortness of

**TABLE 3**  
**Multivariable logistic regression of FVM, Model 1**

Parameter	Estimate	Standard error	Odds ratio	95% confidence limits		P value
Intercept	-2.46	1.71				.1496
Group						
COVID-19 cases vs negative controls	1.27	0.42	12.63	2.40	66.40	.0027
Age	0.01	0.04	1.01	0.93	1.10	.8020
Race/ethnicity						
Asian/other, non-Hispanic vs White, non-Hispanic	0.40	0.64	2.23	0.34	14.54	.5335
Black, non-Hispanic vs White, non-Hispanic	0.33	0.52	2.08	0.45	9.71	.5268
Hispanic vs White, non-Hispanic	-0.33	0.38	1.08	0.33	3.52	.3946
Mode of delivery						
Vaginal vs cesarean delivery	0.21	0.30	1.51	0.46	4.93	.4924
Preeclampsia						
Yes vs no	0.01	0.51	1.02	0.14	7.55	.9817
Fetal growth restriction						
Yes vs no	-0.34	0.65	0.51	0.04	6.57	.6026
Oligohydramnios						
Yes vs no	0.08	0.47	1.17	0.19	7.38	.8659

AUC, area under the curve; COVID-19, coronavirus disease 2019; FVM, fetal vascular malperfusion.

Hosmer-Lemeshow goodness of fit test (chi-square=5.92, df=8,  $P<.6559$ ); AUC=0.74.

Patberg et al. Coronavirus disease 2019 placental pathology. Am J Obstet Gynecol 2021.

breath. None required supplemental oxygen administration or admission to the intensive care unit. Laboratory testing, such as inflammatory markers and coagulation studies, was not performed on these patients as they were not clinically indicated. Obstetrical and medical complications were noted in less than 10% of the COVID-19

**TABLE 4**  
**Multivariable logistic regression of FVM, Model 2**

Parameter	Estimate	Standard error	Odds ratio	95% confidence limits		P value
Intercept	-2.17	1.36				.1105
Group						
COVID-19 cases vs negative controls	1.25	0.41	12.26	2.44	61.77	.0024
Age	0.01	0.04	1.01	0.93	1.10	.8325
Race and ethnicity						
Asian or other, non-Hispanic vs white, non-Hispanic	0.26	0.59	1.84	0.33	10.20	.4859
Black, non-Hispanic vs white, non-Hispanic	0.39	0.50	2.09	0.47	9.29	.3352
Hispanic vs white, non-Hispanic	-0.30	0.37	1.05	0.33	3.39	.9326
Mode of delivery						
Vaginal vs cesarean delivery	0.18	0.29	1.43	0.45	4.52	.5407

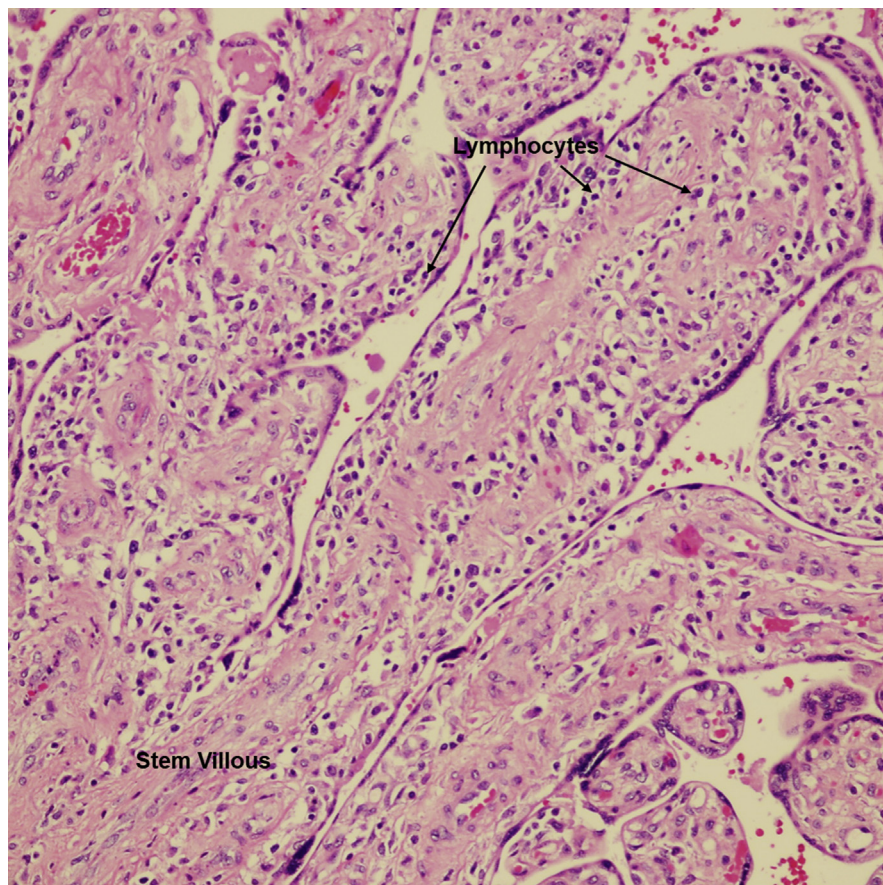
AUC, area under the curve; COVID-19, coronavirus disease 2019; FVM, fetal vascular malperfusion.

Hosmer-Lemeshow goodness of fit test (chi-square=5.78, df=8,  $P<.6722$ ); AUC=0.73.

Patberg et al. Coronavirus disease 2019 placental pathology. Am J Obstet Gynecol 2021.



**FIGURE 4**  
**Villitis of unknown etiology**



Stem villous and terminal villi infiltrated by a lymphohistiocytic inflammatory infiltrate in the stroma. VUE = villi infiltrated by lymphocytes and histiocytes. H&E stain  $\times 400$ .

H&E, hematoxylin and eosin; VUE, villitis of unknown etiology.

Patberg et al. Coronavirus disease 2019 placental pathology. *Am J Obstet Gynecol* 2021.

cohort including: oligohydramnios (6/77, 7.8%); fetal growth restriction, defined as ultrasound estimated fetal weight less than the 10th percentile for gestational age (4/77, 5.2%); preeclampsia (5/77, 6.5%); and preexisting or gestational diabetes (7/77, 9.1%). Neonatal outcomes including birthweight; appearance, pulse, grimace, activity, and respiration (APGAR) scores; and neonatal intensive care unit (NICU) admissions were similar between groups.

There were 25 COVID-19 cases with placental histopathologic features of fetal vascular malperfusion. The majority (18/25) exhibited features of low grade vascular malperfusion with a

global distribution; 1 of these had a recent small luminal fibrin thrombus in a chorionic plate vessel. Two cases were considered to have high grade fetal vascular malperfusion, 1 segmental and 1 global in distribution. One of these cases had 2 recent mural fibrin thrombi in chorionic plate vessels (arteries). The remaining 5 cases had intramural fibrin deposition in an isolated stem villous or chorionic plate vessel or single small basal aggregates of avascular villi and were classified as fetal vascular malperfusion of uncertain significance.

We had a total of 16 COVID-19 placentas with histopathologic findings of villitis of unknown etiology. Six cases

were classified as high grade, 5 with associated avascular villi, and 1 with chronic deciduitis. Three cases were classified as patchy, low grade villitis of unknown etiology. Four cases had only 1 to 2 small foci of villitis; these were considered ungradable and favor low grade. Three cases had only basal villitis, 1 with mild chronic deciduitis. No chronic chorioamnionitis was identified in any of the cases.

A comparison of placental histopathologic findings between COVID-19 cases vs controls is shown in Table 2. Placental weights were similar between groups. COVID-19 cases were more likely to have findings associated with fetal vascular malperfusion, including avascular villi (Figure 1 and 2) and/or mural fibrin deposition (Figure 3) (32.5% [25/77] vs 3.6% [2/56],  $P < .0001$ ; Table 2). In a multivariable model adjusting for maternal age, race and ethnicity, mode of delivery, fetal growth restriction, preeclampsia, and oligohydramnios, this difference remained statistically significant (OR=12.63; 95% CI, 2.40–66.40; Model 1, Table 3). When the adjustment did not include fetal growth restriction, preeclampsia, and oligohydramnios as possible colliders (Model 2), this difference remained statistically significant (OR=12.26; 95% CI, 2.44–61.77; Table 4).

Patients with COVID-19 were also more likely than controls to have villitis of unknown etiology (Figures 4–6) on placental histopathology (20.8% [16/77] vs 7.1% [4/56],  $P = .030$ ). In a multivariable logistic regression model adjusting for maternal age, race and ethnicity, mode of delivery, oligohydramnios, and fetal growth restriction, this difference was no longer statistically significant (OR=2.11; 95% CI, 0.50–8.97; Model 1, Table 5). Similarly, there was no difference in the incidence of villitis of unknown etiology when the adjustment did not include fetal growth restriction and oligohydramnios as possible colliders (Model 2) (OR=2.71; 95% CI, 0.68–10.84; Table 6).

COVID-19 cases were more likely to have evidence of meconium on placental evaluation than controls (20.8% [16/77]

vs 7.1% [4/56],  $P=.030$ ; Table 2). Although 14.3% of COVID cases had no substantial histopathologic abnormalities, this was significantly less common than for the controls (48.2% [27/56] vs 14.3% [11/77],  $P<.0001$ ). Other placental histopathologic findings were similar between groups (Table 2).

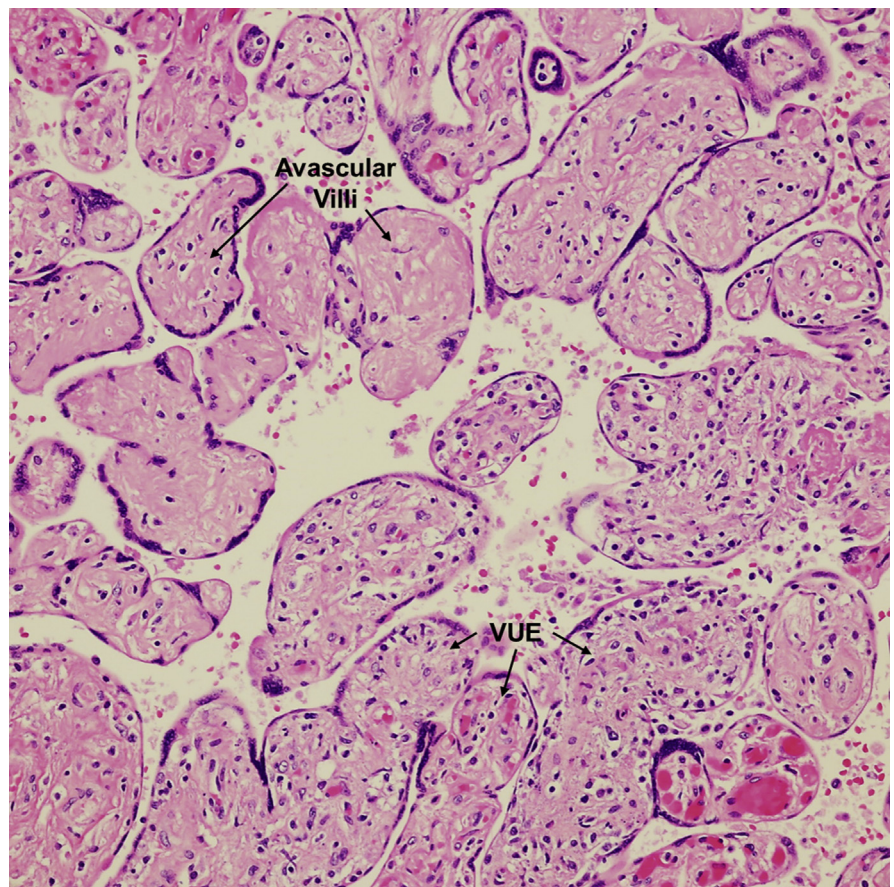
For the secondary objective, when comparing asymptomatic patients with COVID-19 ( $n=67$ ) with the controls, a significant difference was again observed in the frequency of fetal vascular malperfusion and villitis of unknown etiology (31.3% [21/67] vs 3.6% [2/56],  $P<.0001$  and 22.4% [15/67] vs 7.1% [4/56],  $P=.020$ , respectively; Table 7). In another subgroup analysis of patients with COVID-19 comparing those with symptoms ( $n=10$ ) with those without ( $n=67$ ), there was no difference in any of the placental histopathologic findings between groups (data not shown).

## Comment

### Principal findings

We found that placental histopathologic abnormalities were more frequent among COVID-19 cases than controls. Both fetal vascular malperfusion and villitis of unknown etiology were significantly more common in the COVID-19 cases than the controls (32.5% [25/77] vs 3.6% [2/56],  $P<.001$  and 20.8% [16/77] vs 7.1% [4/56],  $P=.030$ , respectively). The difference in fetal vascular malperfusion lesions persisted in multivariable analysis after adjusting for potential confounders; however, this difference did not persist in a similar multivariable model for villitis of unknown etiology. The statistically significant increase in incidence of fetal vascular malperfusion and villitis of unknown etiology persisted even among asymptomatic COVID-19 cases compared with controls (31.3% [21/67] vs 3.6% [2/56],  $P<.0001$  and 22.4% [15/67] vs 7.1% [4/56],  $P=.020$ , respectively). We did not observe an increase in the other placental histopathologic lesions, including those related to maternal vascular malperfusion, except for presence of meconium, which was likely

**FIGURE 5**  
Villitis of unknown etiology with avascular villi



Terminal villi infiltrated by lymphocytes (bottom right). Aggregate of avascular villi, rimmed by preserved syncytiotrophoblasts, with complete loss of vessels and hyaline fibrosis of the stroma (upper left). Suggests vascular occlusion of proximal stem villi (not indicated in this figure). VUE=terminal villi with inflammatory cells. H&E stain  $\times 200$ .

H&E, hematoxylin and eosin; VUE, villitis of unknown etiology.

Patberg et al. Coronavirus disease 2019 placental pathology. *Am J Obstet Gynecol* 2021.

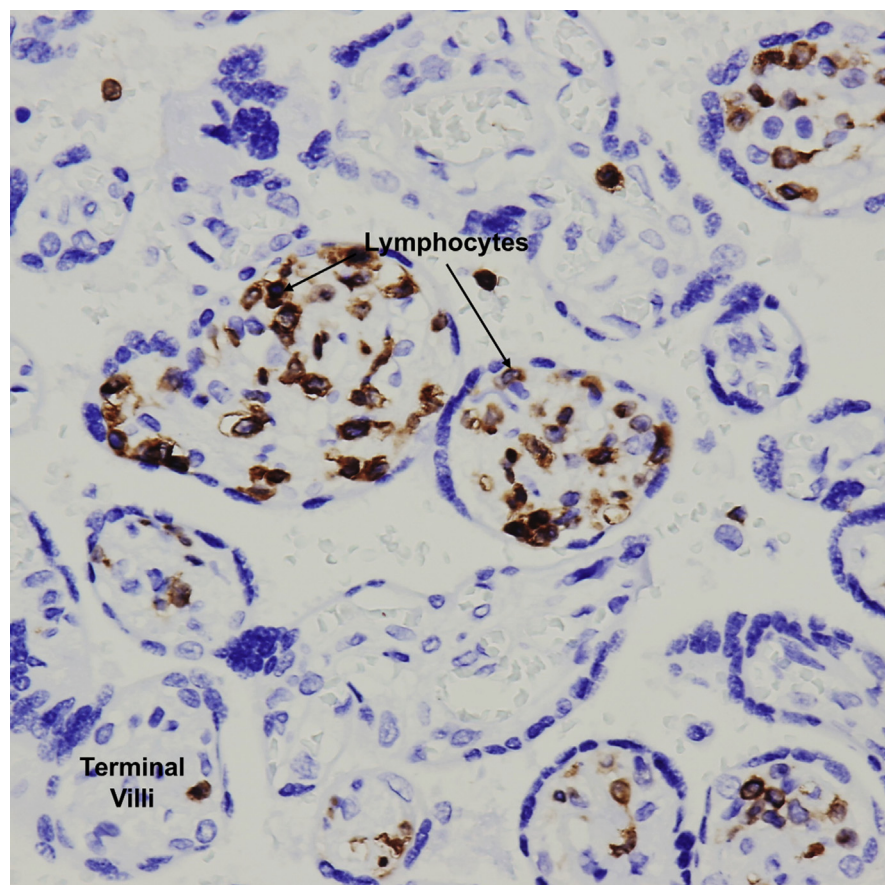
attributable to higher rate of vaginal delivery in the COVID-19 group and of little clinical significance.

### Results in the context of what is known

In a recent structured review including 20 studies with histopathology findings in third trimester placentas following maternal SARS-CoV-2 infection, evidence of fetal vascular malperfusion was reported in 35% of cases, which is similar to the rate observed in our cohort (32.5%).<sup>22</sup> In this review, the rate of maternal vascular malperfusion was reported to

be higher than that observed in our cohort, whereas villitis of unknown etiology was less frequent than in our study. The authors note that limited conclusions can be drawn regarding the effects of SARS-CoV-2 on the placenta because most of the studies included few patients and lacked control groups. This review also found no evidence of vertical transmission to the fetus in any of the identified articles, which we also observed. The exact mechanism by which SARS-CoV-2 may cross the placental barrier is not fully elucidated. However, it is hypothesized that the observed low

**FIGURE 6**  
**Villitis of unknown etiology**



Terminal villi with a T-cell lymphocytic inflammatory infiltrate in the villous stroma. CD3 immunohistochemical stain  $\times 400$ .

Patberg et al. Coronavirus disease 2019 placental pathology. *Am J Obstet Gynecol* 2021.

rate of vertical transmission is due, in part, to the fact that 2 key receptors that must be present for viral entry into host cells (angiotensin-converting enzyme 2 and transmembrane protease serine 2) are rarely coexpressed in third trimester placentas.<sup>23</sup>

We identified 6 studies that reported third trimester placental histopathology findings in  $>5$  patients with COVID-19 and included a control group<sup>24–29</sup> (Table 8). Prahbu et al<sup>24</sup> found a higher rate of lesions of fetal vascular malperfusion in the COVID-19 cohort than the controls, similar to our study. Two studies<sup>25,28</sup> reported a higher frequency of lesions associated with maternal vascular malperfusion than controls, which we did not observe, possibly because we included only

term patients. Of note, both studies included preterm placentas, which are known to be associated with maternal vascular malperfusion lesions. Three studies<sup>26,27,29</sup> reported no specific placental histopathologic features in patients with COVID-19 compared with their respective controls. The studies varied considerably in their design, choice of control group, inclusion and exclusion criteria, and classification of placental lesions, limiting our ability to compare findings with those of this study.

### Clinical implications

Pregnant women with COVID-19 can present with COVID-19–related symptoms; obstetrical complications such as pregnancy loss, fetal death,

preeclampsia, and preterm birth (among others); or be asymptomatic at term.<sup>30–33</sup> Despite the fact that nearly all neonates born to COVID-19–infected mothers are SARS-CoV-2 PCR-negative,<sup>33,34</sup> the virus could impact perinatal outcomes through placental injury. Indeed, placental injury has been reported in symptomatic cases and those with adverse pregnancy outcomes.<sup>14,30–32</sup> However, neonatal outcomes in our study, including birthweight, NICU admissions, and APGAR scores, were similar between COVID-19 and control groups, despite the higher rate of placental abnormalities in the COVID-19 cohort. This suggests that the placenta may act as a defensive biologic filter, offering a degree of protection to the neonate; modify its immune status; or actively produce factors that may protect the fetus in utero. However, our findings suggest that there is injury to the placenta with possible adverse effects in the neonates, warranting follow-up for possible long-term side effects.

The etiology and significance of the increased rate of lesions related to fetal vascular malperfusion in our COVID-19 cohort is unclear. In our COVID-19 placentas, most fetal vascular malperfusion lesions had a global distribution, suggesting a partial or intermittent obstruction in umbilical blood flow, rather than segmental, as is seen in the case of localized thrombosis and occlusion of chorionic plate or stem villous vessels. In this global pattern, endothelial damage may reflect altered flow rather than thrombosis per se.<sup>35</sup> Usually, but not always, this pattern is seen in cases with predisposing umbilical cord lesions, none of which were observed in our cohort. If or how SARS-CoV-2 or COVID-19 may lead to such alterations in fetal umbilical blood flow and ensuing endothelial damage should be a focus of future research. We suspect that indirect immune- and/or viral-mediated systemic damage, rather than local pathophysiologic changes (ie, hypoxemia) of COVID-19 may be responsible, because our

**TABLE 5**  
**Multivariable logistic regression of villitis of unknown etiology (Model 1)**

Parameter	Estimate	Standard error	Odds ratio	95% confidence limits		P value
Intercept	−0.43	1.71				.8024
<b>Group</b>						
COVID-19 cases vs negative controls	0.37	0.37	2.11	0.50	8.97	.3126
Age	−0.02	0.05	0.98	0.89	1.09	.7463
<b>Race and ethnicity</b>						
Black/Asian/other, non-Hispanic vs white, non-Hispanic	−0.81	0.57	0.61	0.09	4.34	.6207
Hispanic vs white, non-Hispanic	1.13	0.41	4.22	1.01	17.74	.0490
<b>Mode of delivery</b>						
Vaginal vs cesarean delivery	−0.35	0.33	0.49	0.13	1.83	.2899
<b>Fetal growth restriction</b>						
Yes vs no	1.01	0.64	7.54	0.62	91.51	.1128
<b>Oligohydramnios</b>						
Yes vs no	0.43	0.50	2.38	0.34	16.75	.3824

AUC, area under the curve; COVID-19, coronavirus disease 2019.

Hosmer-Lemeshow goodness of fit test (chi-square=6.41, df=8,  $P<.602$ ); AUC=0.77.

Patberg et al. Coronavirus disease 2019 placental pathology. Am J Obstet Gynecol 2021.

findings were similar when we included only asymptomatic cases in the analysis. We found only 2 cases of fetal vascular thrombi (both in chorionic plate vessels), in comparison to

others who found that many of the cases of fetal vascular malperfusion had evidence of fetal vascular thrombosis,<sup>24,36,37</sup> which they hypothesized may be attributable to the increased

hypercoagulable state induced by COVID-19.

We did not observe an increase in the incidence of placental lesions associated with maternal vascular

**TABLE 6**  
**Multivariable logistic regression of villitis of unknown etiology (Model 2)**

Parameter	Estimate	Standard error	Odds ratio	95% confidence limits		P value
Intercept	−1.72	1.50				.2532
<b>Group</b>						
COVID-19 cases vs negative controls	0.50	0.35	2.71	0.68	10.84	.1589
Age	−0.02	0.05	0.98	0.90	1.08	.7259
<b>Race and ethnicity</b>						
Black/Asian/other, non-Hispanic vs white, non-Hispanic	−0.68	0.54	0.75	0.11	4.88	.7595
Hispanic vs white, non-Hispanic	1.06	0.40	4.22	1.03	17.22	.0447
<b>Mode of delivery</b>						
Vaginal vs cesarean delivery	−0.38	0.33	0.47	0.13	1.67	.2407

AUC, area under the curve; COVID-19, coronavirus disease 2019.

Hosmer-Lemeshow goodness of fit test (chi-square=7.93, df=8,  $P<.4407$ ); AUC=0.75.

Patberg et al. Coronavirus disease 2019 placental pathology. Am J Obstet Gynecol 2021.

TABLE 7

## Comparison of placental histopathologic findings in a subgroup analysis of asymptomatic COVID-19 cases vs negative controls

Variable <sup>a</sup>		COVID-19 cases, asymptomatic (n=67)	COVID-19 negative (n=56)	P value
Placental weight	<10th percentile	7 (10.5)	7 (12.5)	.098
	10th–90th percentile	59 (88.0)	44 (78.6)	
	>90th percentile	1 (1.5)	5 (8.9)	
Fetal vascular malperfusion (any feature)	Absent	46 (68.7)	54 (96.4)	<.0001
	Present	21 (31.3)	2 (3.6)	
Avascular villi	Absent	48 (71.6)	55 (98.2)	<.0001
	Present	19 (28.4)	1 (1.8)	
Mural fibrin deposition	Absent	61 (91.0)	55 (98.2)	.125
	Present	6 (9.0)	1 (1.8)	
Chorioamnionitis stage	Absent	49 (73.1)	45 (80.4)	.069
	Present, stage 1	13 (22.4)	5 (8.9)	
	Present, stage 2	3 (4.5)	6 (10.7)	
Chorioamnionitis fetal response	Absent	58 (86.6)	50 (89.3)	.096
	Present, stage 1	8 (11.9)	2 (3.6)	
	Present, stage 2	1 (1.5)	4 (7.1)	
Villitis of unknown etiology	Absent	52 (77.6)	52 (92.9)	.020
	Present	15 (22.4)	4 (7.1)	
Chronic intervillitis	Absent	64 (95.5)	56 (100)	.250
	Present	3 (4.5)	0	
Infarct	Absent	48 (71.6)	47 (83.9)	.132
	Present	19 (28.4)	9 (16.0)	
Hematoma	Absent	49 (73.1)	45 (80.4)	.400
	Present	18 (26.9)	11 (19.6)	
Meconium	Absent	51 (76.1)	52 (92.9)	.014
	Present	16 (23.9)	4 (7.1)	
Decidual vasculopathy	Absent	64 (95.5)	56 (100)	.500
	Present – OC	2 (3.0)	0	
	Present – PM	1 (1.5)	0	

COVID-19, coronavirus disease 2019; OC, occlusive; PM, persistent muscularization.

<sup>a</sup> Data presented as number (percentage).

Patberg et al. Coronavirus disease 2019 placental pathology. *Am J Obstet Gynecol* 2021.

malperfusion, including placenta weight <10th percentile, intra-parenchymal or retroplacental hematomas, infarcts, or decidual vasculopathy, compared with controls. Maternal vascular malperfusion lesions in the placenta are associated with adverse pregnancy outcomes, including

stillbirth, preterm delivery, and placental abruption, and have been observed with increased frequency compared with controls in 1 study on placental pathology in patients with COVID-19.<sup>25</sup> Similarly, we did not find an increase in the incidence of pregnancy outcomes related to ischemic

placental disease (fetal growth restriction, oligohydramnios, and preeclampsia). This may be related to the severity of the disease, with more severe COVID-19 infection resulting in greater damage on the maternal unit of the placenta. Alternatively, the timing and duration of infection may play an

TABLE 8

## Summary of literature reporting placental histopathology findings in third trimester placentas following maternal SARS-CoV-2 infection which contain &gt;5 patients and a control group

Author	#COVID cases	Control group	Histologic findings of SARS-CoV-2—positive placentas
Prahbu et al <sup>24</sup>	29	Consecutive SARS-CoV-2—negative deliveries >20 wk GA, matched for delivery time period; all had another clinical indication for placental pathology (n=106)	Fetal vascular malperfusion: 14/29 (48%) <sup>a</sup>
			Meconium: 18/29 (62%) <sup>a</sup>
			Maternal vascular malperfusion: 8/29 (28%)
			Chronic villitis: 5/29 (17%)
			Acute chorioamnionitis: 3/29 (10%)
Shanes et al <sup>25</sup>	15	(1) Singleton, 3rd trimester historic controls submitted at “judgment of delivery physician” (n=17,479) (2) Nested cohort of these patients with history of melanoma (n=215)	Maternal vascular malperfusion: 12/15 (80%) <sup>a</sup>
			Fetal vascular malperfusion — formal diagnosis: 1/15 (7%)
			Findings suggestive of FVM (any feature):
			Clustered avascular villi: 4/15 (27%)
			Mural fibrin deposition: 1/15 (7%)
			Delayed villous maturation: 4/15 (27%)
			Chorioamnionitis with fetal response: 1/15 (7%)
			Chronic inflammatory pathology
			Low-grade chronic lymphocytic villitis: 2/15 (7%)
			Chronic deciduitis: 2/15 (7%)
Hecht et al <sup>2</sup>	19	(1) “Normal” controls — historic uncomplicated term deliveries with GBS+ as the only clinical indication for pathology exam (n=122) (2) “Pathologic” controls - historic late preterm and term deliveries of infants with HIE (n=130)	Maternal vascular malperfusion: 5/19 (25%)
			Low grade: 3/19 (16%)
			High grade: 2/19 (11%)
			Fetal vascular malperfusion: 3/19 (16%)
			Acute chorioamnionitis: 6/19 (32%)
			Fetal inflammatory response: 4/19 (21%)
			Villitis of unknown etiology: 1/19 (5%)
			Histiocytic intervillitis: 1/19 (5%)

Patberg et al. Coronavirus disease 2019 placental pathology. Am J Obstet Gynecol 2021.

(continued)

TABLE 8

**Summary of literature reporting placental histopathology findings in third trimester placentas following maternal SARS-CoV-2 infection which contain >5 patients and a control group** (continued)

Author	#COVID cases	Control group	Histologic findings of SARS-CoV-2–positive placentas
Zhang et al <sup>27</sup>	74	Consecutive term and preterm SARS-CoV-2–negative placentas submitted based on “institutional criteria of maternal and fetal conditions” and matched for delivery time period (n=290)	Maternal vascular malperfusion
			“Vasculopathy”: 36/74 (49%)
			Infarcts: 7/74 (9%)
			Fetal vascular malperfusion
			“Thrombosis”: 18/74 (24%)
			Avascular villi: 5/74 (7%)
			Chorioamnionitis: 48/74 (65%)
			Meconium: 24/74 (32%)
			Villitis: 17/74 (23%)
			Maternal floor infarct: 2/74 (3%)
Smithgall et al <sup>28</sup>	51	Consecutive term and preterm singleton placentas from SARS-CoV-2–negative deliveries matched for delivery time period (n=25); subgroup analysis of symptomatic vs asymptomatic infections performed	Maternal vascular malperfusion
			Decidual vasculopathy: 3/51 (6%)
			Accelerated villous maturity: 10/51 (20%)
			Villous agglutination: 21/51 (41%) <sup>a</sup>
			Infarcts: 7/51 (14%)
			Intervillous thrombus: 8/51 (16%)
			Subchorionic thrombus: 9/51 (18%) <sup>a</sup>
			Fetal vascular malperfusion
			Avascular villi (segmental): 5/51 (10%)
			Fetal thrombotic vasculopathy: 4/51 (8%)
			Chorangiosis: 8/51 (16%)
			Chronic villitis, unknown etiology: 2/51 (4%)
			Acute intrauterine infection
			Maternal response: 17/51 (33%)
Fetal response: 9/51 (18%)			

TABLE 8

## Summary of literature reporting placental histopathology findings in third trimester placentas following maternal SARS-CoV-2 infection which contain &gt;5 patients and a control group (continued)

Author	#COVID cases	Control group	Histologic findings of SARS-CoV-2—positive placentas
Gulersen et al <sup>29</sup>	50	Term and preterm singleton placentas from historic controls submitted to pathology at “discretion of the delivery physician;” matched for GA at delivery (n=50); subgroup analysis of symptomatic vs asymptomatic infections performed	Maternal vascular malperfusion  Accelerated villous maturation: 0/50 Decidual vasculopathy: 0/50 Distal villous hypoplasia: 2/50 (4%) Excessive infarction: 4/50 (8%) Old hemorrhage in membranes: 1/50 (2%) Fetal vascular malperfusion: 4/50 (8%) Chorionitis: 11/50 (22%) Amnionitis: 9/50 (18%) Meconium staining: 9/50 (18%)

COVID-19, coronavirus disease 2019; FIM, fetal vascular malperfusion; GA, gestational age; GBS, Group B Streptococcus; HIE, hypoxic-ischemic encephalopathy; SARS-CoV-2, severe acute respiratory syndrome coronavirus 2.

<sup>a</sup> Statistically significant result.

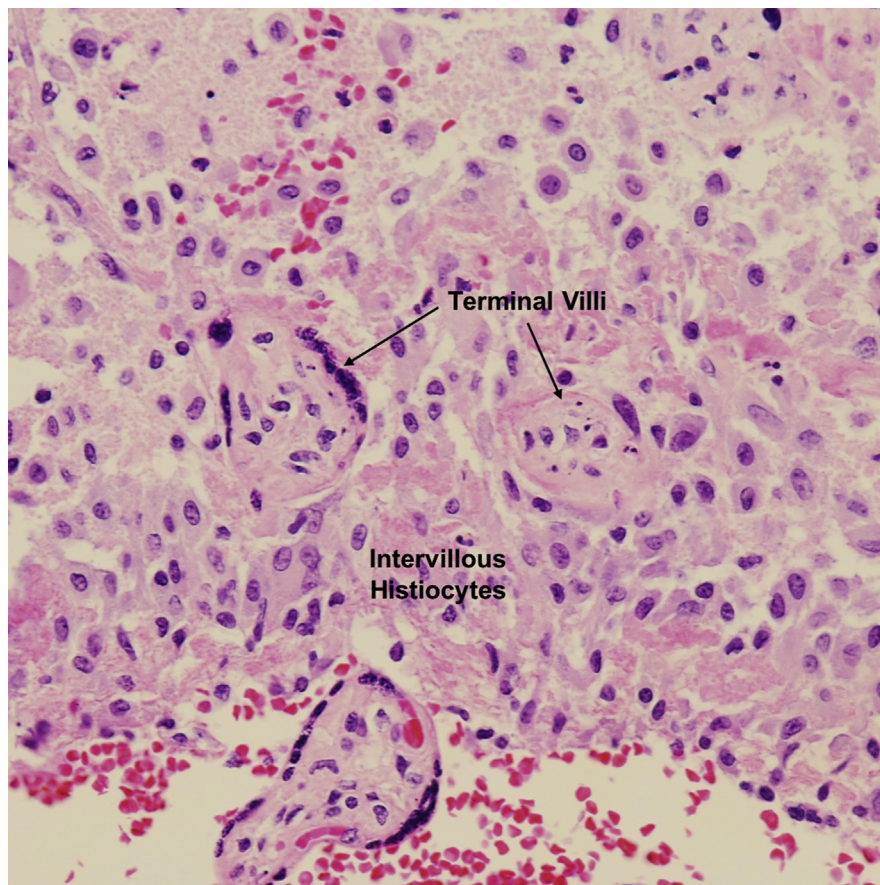
Patberg et al. *Coronavirus disease 2019 placental pathology*. *Am J Obstet Gynecol* 2021.

important role, with immature placentas being more vulnerable to certain types of viral-mediated damage than term placentas. Our study included only term placentas, whereas others have included a substantial proportion of preterm deliveries, in which lesions of maternal vascular malperfusion are known to be more common.

Unlike other reports to date, our study observed an increase in the incidence of villitis of unknown etiology in placentas of patients with COVID-19 (20.8% [16/77] vs 7.1% [4/56],  $P=.030$ ). Although this statistical significance did not persist in multivariable modeling, this was likely secondary Type II error from a small sample size. Nevertheless, the rate of villitis of unknown etiology in our COVID-19 cohort is 3 times higher than in controls and is higher than expected in term placentas (5%–15%).<sup>35</sup> This may be due to the study time period extending several months past the peak of COVID-19 infections in our region, with this lesion developing more often in women who have a longer interval from infection to delivery. In all cases of villitis of unknown etiology in our COVID-19–positive cohort, there was no clinical history that could explain this finding and placental weights were normal (between 10th and 90th percentile) in these patients. The presence of villitis of unknown etiology in otherwise healthy patients with normal placental weights suggests that exposure to SARS-CoV-2 may have occurred earlier in the third trimester, with villitis of unknown etiology developing as a sequelae, after weeks of harboring the virus. The etiology of the villitis of unknown etiology seen in these placentas is uncertain; it may be a direct or indirect consequence of viral infection resulting in an exaggerated systemic immune response, including increased levels of cytokines, as has been noted following other respiratory viral infections.<sup>38</sup> It appears unlikely that pathophysiologic changes from severe COVID-19 disease, such as maternal hypoxia, influenced these findings because our



**FIGURE 7**  
**Chronic intervillitis**



Aggregates of histiocytes between terminal villi. H&E stain  $\times 200$ .

H&E, hematoxylin and eosin.

Patberg et al. Coronavirus disease 2019 placental pathology. *Am J Obstet Gynecol* 2021.

results were similar in a subgroup analysis including only asymptomatic cases.

Chronic intervillitis was observed in placentas from 3 (4.5%) patients with COVID-19 (Figures 7 and 8), all of whom were asymptomatic, and none in the control group. This difference was not statistically significant ( $P=.26$ ), although the comparison is limited by small sample size. Two previous case reports on placental histopathology in patients with COVID-19 have described chronic intervillitis as a more common finding<sup>14,30</sup>; however, both cases were preterm gestations with severe COVID-19 symptomatology. The fact that our study included only term gestations, the majority of whom were

asymptomatic or with mild symptoms, may contribute to the observation that chronic intervillitis as an uncommon abnormality in our COVID-19–positive cohort.

### Research implications

Clarifying the relationship between adverse obstetrical outcomes and COVID-19–related placental histopathologic lesions should be the focus of further research. Future investigation may be directed at determining if the increased rate of placental abnormalities, particularly fetal vascular malperfusion, translates into differences in neonatal outcomes. Long-term follow-up of these infants may be warranted and may be the focus of future studies

if indeed our findings are confirmed by other investigators. In addition, further studies are warranted to examine placental pathology of patients who were infected with COVID-19 earlier in gestation, as both duration of infection and placental maturity may impact type and frequency of various histopathologic lesions.

### Strengths and limitations

To our knowledge, this is the largest study describing histopathological findings in the placentas of term women diagnosed with COVID-19 infection during their admission to Labor and Delivery. In addition, this is the only study to include a contemporaneous comparison group of term COVID-19–negative controls without other potentially confounding medical or obstetrical complications. Other studies that have used a control group have included preterm gestations, historic controls, and/or those with comorbid conditions.<sup>24–29</sup>

Another strength is that our sample of women with COVID-19 consists of consecutive patients who were routinely tested on admission to Labor and Delivery, regardless of symptomatology, allowing us to compare findings among women with and without symptoms, which few others have done.<sup>28,29</sup> This study design captured all eligible patients who met the inclusion criteria.

One of our study's limitations is that we were not able to assess timing of COVID-19 infection in our study patients; however, in a limited (1-month) audit, we identified that for 75% of these patients, the finding of positive COVID-19 status was new and the remaining 25% patients were known to be COVID-19–positive by a previous PCR test before admission. Another limitation is to identify the ideal control group because placentas are sent to pathology predominantly in patients with high-risk maternal or fetal conditions in our institution. Therefore, we had to include many placentas from patients whose only indication for placental evaluation was delivery through cesarean section, which decreased our sample size and ability to

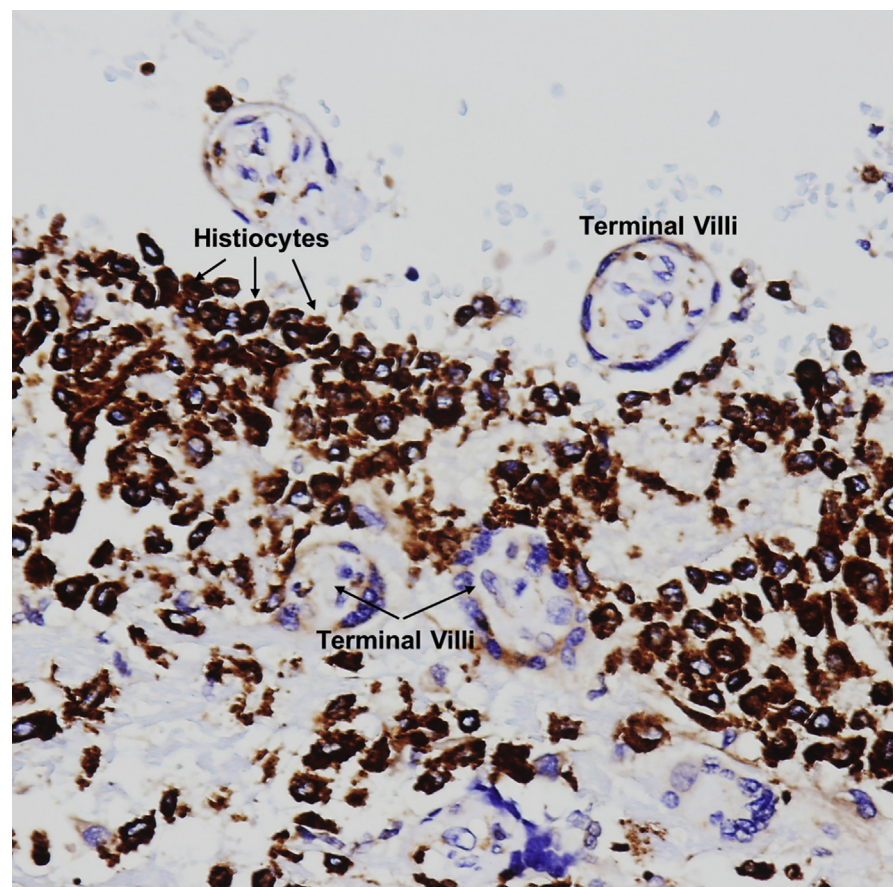
match for certain clinical characteristics. This also accounts for the significantly higher rate of cesarean delivery in the control group (42/56, 75% vs 20/77, 26%;  $P<.0001$ ). However, the majority of patients in the control group who delivered via cesarean delivery underwent labor before delivery, and there was no statistically significant difference between groups in predelivery labor (7/20, 35% vs 20/42, 47.6%;  $P=.350$ ), nor would we expect mode of delivery to affect placental lesions related to fetal vascular malperfusion or villitis of unknown etiology.

Control placentas had fewer sections examined per placenta than COVID-19 cases, which may contribute to the higher frequency of certain lesions in the latter group. However, if this were the case, we would expect all lesions to be more frequent in the COVID-19 group, which was not our observation. It is unlikely that oversampling alone could account for the 3-fold increase in lesions of villitis of unknown etiology or the nearly 10-fold increase in lesions associated with fetal vascular malperfusion in cases compared with controls. Although differences in pathologists' interpretation could influence differences in findings between groups, we found excellent interobserver reliability ( $AC_1 >.9$ ; Table 9) on rereview of approximately one-third of all placentas in our study (26 cases and 21 controls). Finally, pathologists were not blinded to COVID-19 status, as this study was performed in a pragmatic fashion. However, during the reliability assessment, pathologists were blinded to COVID-19 status and we found excellent interclass correlation.

## Conclusions

We found that COVID-19 infection during pregnancy results in increased rates of placental histopathologic abnormalities, particularly fetal vascular malperfusion and villitis of unknown etiology. These findings seem to occur regardless of whether SARS-CoV-2 positive testing leads to COVID-19 symptomatology in pregnant patients. This suggests that placental damage is mediated by virus-induced injury on

**FIGURE 8**  
Chronic intervillitis



Terminal villi with intervillous histiocytes seen on CD68 immunohistochemical stain  $\times 200$ .

Patberg et al. Coronavirus disease 2019 placental pathology. *Am J Obstet Gynecol* 2021.

the fetal-placental unit, rather than as a sequelae of COVID-19 pathophysiology in the mother. Long-term neonatal

follow-up may be warranted if our findings are confirmed by future studies. ■

**TABLE 9**  
Pathologist interobserver reliability for select placental histopathology findings in a subset of placentas from COVID-19 cases (n = 26) and controls (n = 21)

Placental lesion	$AC_1$ (SE)
FVM with avascular villi, low grade	0.961 (0.028)
FVM with avascular villi, high grade	0.929 (0.038)
FVM with mural fibrin deposition	1.000 (0)
VUE, low grade	0.954 (0.027)
VUE, high grade	0.941 (0.036)

$AC_1$ , Gwet's first-order agreement coefficient; COVID-19, coronavirus disease 2019; FVM, fetal vascular malperfusion; SE, standard error; VUE, villitis of unknown etiology.

Patberg et al. Coronavirus disease 2019 placental pathology. *Am J Obstet Gynecol* 2021.

## Acknowledgments

We would like to thank the pathology physician assistants and resident physicians who were integral to our study and responsible for the processing of placentas for this study. We would also like to thank Rosanne Vertichio for her assistance in data collection.

## References

- Pierce-Williams RAM, Burd J, Felder L, et al. Clinical course of severe and critical coronavirus disease 2019 in hospitalized pregnancies: a United States cohort study. *Am J Obstet Gynecol MFM* 2020;2:100134.
- Penfield CA, Brubaker SG, Limaye MA, et al. Detection of severe acute respiratory syndrome coronavirus 2 in placental and fetal membrane samples. *Am J Obstet Gynecol MFM* 2020;2:100133.
- Khalil A, Hill R, Ladhani S, Pattison K, O'Brien P. Severe acute respiratory syndrome coronavirus 2 in pregnancy: symptomatic pregnant women are only the tip of the iceberg. *Am J Obstet Gynecol* 2020;223:296–7.
- Lamouroux A, Attie-Bitach T, Martinovic J, Leruez-Ville M, Ville Y. Evidence for and against vertical transmission for severe acute respiratory syndrome coronavirus 2. *Am J Obstet Gynecol* 2020;223:91.e1–4.
- Algarroba GN, Rekawek P, Vahanian SA, et al. Visualization of severe acute respiratory syndrome coronavirus 2 invading the human placenta using electron microscopy. *Am J Obstet Gynecol* 2020;223:275–8.
- Yang Z, Wang M, Zhu Z, Liu Y. Coronavirus disease 2019 (COVID-19) and pregnancy: a systematic review. *J Matern Fetal Neonatal Med* 2020 [Epub ahead of print].
- Yan J, Guo J, Fan C, et al. Coronavirus disease 2019 in pregnant women: a report based on 116 cases. *Am J Obstet Gynecol* 2020;223:111.e1–14.
- Della Gatta AN, Rizzo R, Pilu G, Simonazzi G. Coronavirus disease 2019 during pregnancy: a systematic review of reported cases. *Am J Obstet Gynecol* 2020;223:36–41.
- Vlachodimitropoulou Koumoutsea E, Vivanti AJ, Shehata N, et al. COVID-19 and acute coagulopathy in pregnancy. *J Thromb Haemost* 2020;18:1648–52.
- Breslin N, Baptiste C, Gyamfi-Bannerman C, et al. Coronavirus disease 2019 infection among asymptomatic and symptomatic pregnant women: two weeks of confirmed presentations to an affiliated pair of New York City hospitals. *Am J Obstet Gynecol MFM* 2020;2:100118.
- Di Mascio D, Khalil A, Saccone G, et al. Outcome of coronavirus spectrum infections (SARS, MERS, COVID-19) during pregnancy: a systematic review and meta-analysis. *Am J Obstet Gynecol MFM* 2020;2:100107.
- Zaigham M, Andersson O. Maternal and perinatal outcomes with COVID-19: a systematic review of 108 pregnancies. *Acta Obstet Gynecol Scand* 2020;99:823–9.
- Dashraath P, Wong JLJ, Lim MXK, et al. Coronavirus disease 2019 (COVID-19) pandemic and pregnancy. *Am J Obstet Gynecol* 2020;222:521–31.
- Vivanti AJ, Vauloup-Fellous C, Prevot S, et al. Transplacental transmission of SARS-CoV-2 infection. *Nat Commun* 2020;11:3572.
- Connors JM, Levy JH. COVID-19 and its implications for thrombosis and anticoagulation. *Blood* 2020;135:2033–40.
- Rapkiewicz AV, Mai X, Carsons SE, et al. Megakaryocytes and platelet-fibrin thrombi characterize multi-organ thrombosis at autopsy in COVID-19: a case series. *EClinicalMedicine* 2020;24:100434.
- Vintzileos WS, Muscat J, Hoffmann E, et al. Screening all pregnant women admitted to labor and delivery for the virus responsible for coronavirus disease 2019. *Am J Obstet Gynecol* 2020;223:284–6.
- Khong TY, Mooney EE, Ariel I, et al. Sampling and definitions of placental lesions: Amsterdam Placental Workshop Group Consensus Statement. *Arch Pathol Lab Med* 2016;140:698–713.
- Gwet K. *Handbook of Inter-Rater Reliability: how to measure the level of agreement between two or multiple raters*. Stataxis Publishing Company: Gaithersburg, MD;309.
- Wongpakaran N, Wongpakaran T, Wedding D, Gwet KL. A comparison of Cohen's kappa and Gwet's AC1 when calculating inter-rater reliability coefficients: a study conducted with personality disorder samples. *BMC Med Res Methodol* 2013;13:61.
- Landis JR, Koch GG. The measurement of observer agreement for categorical data. *Biometrics* 1977;33:159–74.
- Sharps MC, Hayes DJL, Lee S, et al. A structured review of placental morphology and histopathological lesions associated with SARS-CoV-2 infection. *Placenta* 2020;101:13–29.
- Bloise E, Zhang J, Nakpu J, et al. Expression of severe acute respiratory syndrome coronavirus 2 cell entry genes, angiotensin-converting enzyme 2 and transmembrane protease serine 2, in the placenta across gestation and at the maternal-fetal interface in pregnancies complicated by preterm birth or preeclampsia. *Am J Obstet Gynecol* 2020 [Epub ahead of print].
- Prabhu M, Cagino K, Matthews KC, et al. Pregnancy and postpartum outcomes in a universally tested population for SARS-CoV-2 in New York City: a prospective cohort study. *BJOG* 2020;127:1548–56.
- Shanes ED, Mithal LB, Otero S, Azad HA, Miller ES, Goldstein JA. Placental pathology in COVID-19. *Am J Clin Pathol* 2020;154:23–32.
- Hecht JL, Quade B, Deshpande V, et al. SARS-CoV-2 can infect the placenta and is not associated with specific placental histopathology: a series of 19 placentas from COVID-19-positive mothers. *Mod Pathol* 2020 [Epub ahead of print].
- Zhang P, Salafia C, Heyman T, Salafia C, Lederman S, Dygulska B. Detection of severe acute respiratory syndrome coronavirus 2 in placentas with pathology and vertical transmission. *Am J Obstet Gynecol MFM* 2020 [Epub ahead of print].
- Smithgall MC, Liu-Jarin X, Hamele-Bena D, et al. Third-trimester placentas of severe acute respiratory syndrome coronavirus 2 (SARS-CoV-2)-positive women: histomorphology, including viral immunohistochemistry and in-situ hybridization. *Histopathology* 2020 [Epub ahead of print].
- Gulersen M, Prasannan L, Tam HT, et al. Histopathologic evaluation of placentas after diagnosis of maternal severe acute respiratory syndrome coronavirus 2 infection. *Am J Obstet Gynecol MFM* 2020 [Epub ahead of print].
- Hosier H, Farhadian SF, Morotti RA, et al. SARS-CoV-2 infection of the placenta. *J Clin Invest* 2020;130:4947–53.
- Baud D, Greub G, Favre G, et al. Second-trimester miscarriage in a pregnant woman with SARS-CoV-2 infection. *JAMA* 2020;323:2198–200.
- Mendoza M, Garcia-Ruiz I, Maiz N, et al. Preeclampsia-like syndrome induced by severe COVID-19: a prospective observational study. *BJOG* 2020;127:1374–80.
- Trippella G, Ciarcia M, Ferrari M, et al. COVID-19 in pregnant women and neonates: a systematic review of the literature with quality assessment of the studies. *Pathogens* 2020;9:485.
- Golden TN, Simmons RA. Maternal and neonatal response to COVID-19. *Am J Physiol Endocrinol Metab* 2020;319:E315–9.
- Redline RW, Boyd TK, Roberts DJ, eds. *Placental and gestational pathology*. Cambridge: Cambridge University Press; 2018.
- Mulvey JJ, Magro CM, Ma LX, Nuovo GJ, Baergen RN. Analysis of complement deposition and viral RNA in placentas of COVID-19 patients. *Ann Diagn Pathol* 2020;46:151530.
- Baergen RN, Heller DS. Placental pathology in Covid-19 positive mothers: preliminary findings. *Pediatr Dev Pathol* 2020;23:177–80.
- Meijer WJ, Wensing AM, Bruinse HW, Nikkels PG. High rate of chronic villitis in placentas of pregnancies complicated by influenza A/H1N1 infection. *Infect Dis Obstet Gynecol* 2014;2014:768380.

## Author and article information

From the Departments of Obstetrics and Gynecology (Drs Patberg, Adams, Rekawek, Vahanian, Sicuranza, Chavez, and Vintzileos), Foundations of Medicine (Ms Akerman and Dr Ragolia), and Pathology (Drs Hernandez, Rapkiewicz, and Khullar), NYU Winthrop Hospital, NYU Langone Health, NYU Long Island School of Medicine, Mineola, NY.

Received Aug. 6, 2020; revised Sept. 21, 2020; accepted Oct. 15, 2020.

The authors have no conflict of interest to report.

Corresponding author: Elizabeth T. Patberg, MD. Elizabeth.patberg@nyulangone.org