

SCIENTIFIC REPORTS



OPEN

Chronic kidney disease is associated with a higher 90-day mortality than other chronic medical conditions in patients with sepsis

Received: 19 February 2015

Accepted: 24 April 2015

Published: 21 May 2015

Ashham Mansur¹, Evelyn Mulwande¹, Maximilian Steinau¹, Ingo Bergmann¹, Aron Frederik Popov², Michael Ghadimi³, Tim Beissbarth⁴, Martin Bauer² & José Hinz¹

According to previous studies, the clinical course of sepsis could be affected by preexisting medical conditions, which are very common among patients with sepsis. This observational study aimed at investigating whether common chronic medical conditions affect the 90-day mortality risk in adult Caucasian patients with sepsis. A total of 482 patients with sepsis were enrolled in this study. The ninety-day mortality was the primary outcome; organ failure was the secondary outcome. Sepsis-related organ failure assessment (SOFA) scores and the requirements for organ support were evaluated to assess organ failure. A multivariate Cox regression model for the association between the 90-day mortality risk and chronic preexisting medical conditions adjusted for all relevant confounders and mortality predictors revealed the highest hazard ratio for patients with chronic kidney disease (CKD) (hazard ratio, 2.25; 95% CI, 1.46–3.46; $p = 0.0002$). Patients with CKD had higher SOFA scores than patients without CKD (8.9 ± 4.0 and 6.5 ± 3.4 , respectively; $p < 0.0001$). Additionally, an analysis of organ-specific SOFA scores revealed higher scores in three organ systems (kidney, cardiovascular and coagulation). Patients with CKD have the highest 90-day mortality risk compared with patients without CKD or with other chronic medical conditions.

Sepsis is a life-threatening complication of an infection accompanied by a systemic inflammatory response that might cause organ injury, shock and death¹. In the United States, half of patients with severe sepsis are treated in the intensive care unit (ICU), and sepsis accounts for 10% of all ICU admissions^{2,3}. The annual incidence of sepsis in the United States is estimated at 750,000 cases, and these numbers show a rising trend⁴.

The clinical course of sepsis could be affected by several factors. One of the most relevant factors is the presence of preexisting medical conditions, which are very common among patients with sepsis^{5,6}. Previous studies have shown that medical comorbidities are associated with the severity of sepsis and the degree of organ dysfunction^{7,8}. However, the majority of previous investigations have focused on individual chronic medical conditions^{9–11}, and most studies that examined several chronic medical

¹Department of Anesthesiology, University Medical Center, Georg August University, Robert-Koch-Str.40, D-37075 Goettingen, Germany. ²Department of Cardiothoracic Transplantation & Mechanical Support, Royal Brompton and Harefield Hospital, Harefield, Hill End Road, UB9 6JH London, United Kingdom. ³Department of General and Visceral Surgery, University Medical Center, Georg August University, D-37075 Goettingen, Germany. ⁴Department of Medical Statistics, University Medical Center, Georg August University, Robert-Koch-Str.40, D-37075 Goettingen, Germany. Correspondence and requests for materials should be addressed to A.M. (email: ashham.mansur@med.uni-goettingen.de)

conditions were retrospective in nature^{12,13}. Additionally, the major outcome of previous investigations was short-term mortality (28-day, ICU and hospital mortality)^{12–15}. Because many sepsis patients remain hospitalized at day 28, and because strong evidence suggests that many late sequelae from sepsis are not captured by this time point¹⁶, many experts suggest that sepsis studies consider a larger window of time, such as 60 or 90 days¹⁷.

Moreover, as several improved treatments for sepsis, especially for sepsis-associated organ dysfunction, have been developed in recent years¹⁸, reevaluating the effect of common chronic medical conditions on the clinical course of patients with sepsis is important.

This prospective observational study aimed at investigating whether and to what extent common chronic medical conditions (arterial hypertension, coronary heart disease, chronic obstructive pulmonary disease (COPD), chronic kidney disease (CKD), insulin-dependent diabetes mellitus (IDDM), non-insulin-dependent diabetes mellitus (NIDDM), chronic liver disease, and history of stroke) affect the 90-day mortality risk in Caucasian patients with sepsis.

Results

Baseline characteristics. A total of 482 adult Caucasian patients with sepsis were enrolled in this observational investigation. All of the patients were successfully followed for a maximum of 90 days. The patients' ages ranged from 19 to 92 years (median, 64 years) (Table 1); 35% were women and 65% were men. The distribution of sepsis/severe sepsis and septic shock was 40% and 60%, respectively. An assessment of the frequency of the eight chronic medical conditions revealed arterial hypertension to be the most common preexisting disease (55%) and history of stroke to be the least common (6%). Thirty percent of patients had a history of recent elective surgery, and 52% had a history of recent emergency surgery. The most common site of infection was the lung (55%).

At baseline, the mean sepsis-related organ failure assessment (SOFA) and acute physiology and chronic health evaluation II (APACHE II) morbidity scores were 9.1 ± 4.0 and 21.3 ± 7.0 , respectively (Table 1). The frequency of organ support therapy (mechanical ventilation, vasopressor therapy and renal replacement therapy) at the time of sepsis onset was 84%, 60% and 9%, respectively (Table 1).

Outcomes. Mortality. A multivariate Cox regression model for the association between the 90-day mortality risk and chronic preexisting medical conditions adjusted for all of the relevant confounders and mortality predictors revealed the highest hazard ratio for patients with CKD (hazard ratio, 2.25; 95% CI, 1.46–3.46; $p = 0.0002$) (Table 2) followed by those with diabetes mellitus (NIDDM: hazard ratio, 1.65; 95% CI, 0.96–2.83; $p = 0.0684$ and IDDM: hazard ratio, 1.62; 95% CI, 0.99–2.64; $p = 0.0527$) and a history of cancer (hazard ratio, 1.63; 95% CI, 1.09–2.34; $p = 0.0182$) (Table 2). This finding indicates that despite potential baseline confounders (age, gender, initial APACHE II and SOFA scores, septic shock, type of infection, recent surgical history), pre-existing CKD is an independent and significant prognostic variable for the 90-day mortality risk (Table 2).

Similarly, a Kaplan-Meier survival analysis of the 90-day mortality risk among patients with CKD and patients without CKD revealed a significantly higher mortality risk among patients with CKD compared with patients without CKD ($p < 0.0001$, log-rank test) (Fig. 1). Similarly, patients with CKD had a significantly higher 28-day mortality rate compared to patients with no history of CKD (Table 3).

Disease severity. Over the 28-day observational period in the ICU, the mean SOFA score was 6.8 ± 3.6 (Table 3). Analyses of organ-specific SOFA scores revealed the highest scores in the respiratory, cardiovascular and central nervous systems (1.9 ± 0.8 , 1.5 ± 1.0 and 1.9 ± 1.1 , respectively).

To explore the effect of CKD (as the most predictive variable for mortality) on disease severity and the extent of organ dysfunction over the course of the ICU stay, we calculated organ-specific SOFA scores. Patients with CKD had higher SOFA scores compared with patients without CKD (8.9 ± 4.0 and 6.5 ± 3.4 , respectively; $p < 0.0001$) (Table 3). Additionally, analyses of organ-specific SOFA scores revealed higher scores in three organ systems (kidney, cardiovascular and coagulation). Compared with patients without CKD, patients with CKD had higher SOFA-Renal scores (1.8 ± 1.4 and 0.7 ± 1.7 , respectively; $p < 0.0001$), SOFA-Cardiovascular scores (1.9 ± 1.1 and 1.4 ± 0.9 , respectively; $p = 0.0012$) and SOFA-Coagulation scores (0.6 ± 0.8 and 0.3 ± 0.5 , respectively; $p = 0.0242$). The remaining two SOFA scores (respiratory and central nervous system) did not differ between the groups (Table 3).

Regarding organ support-free days, patients with CKD had significantly fewer vasopressor-free days compared with patients without CKD (7 ± 6 and 11 ± 7 , respectively; $p = 0.0002$). CKD patients also had significantly fewer dialysis-free days compared with patients with no CKD history (11 ± 8 and 14 ± 8 , respectively; $p = 0.0030$). The groups did not differ with regard to ventilator-free days.

Discussion

This observational clinical investigation assessed the effect of the most common chronic medical conditions on the 90-day survival among patients with sepsis. According to our main findings, patients with CKD had the highest 90-day mortality risk compared with patients without CKD or patients with other chronic medical conditions. This observation underscores the negative consequences of pre-existing CKD for the clinical course of sepsis and confirms previous investigations on the role of CKD in sepsis^{19–21}.

	All (n = 482)
Age [years]	63 ± 15
Gender, male, %	65
Body mass index	28 ± 7
Type of sepsis	
Sepsis/severe sepsis, %	40
Septic shock, %	60
SOFA score	9.1 ± 4.0
APACHE II score	21.3 ± 7.0
Comorbidities and recent surgical history, %	
Arterial hypertension	55
Coronary heart disease	7
Chronic obstructive pulmonary disease (COPD)	16
Chronic kidney disease (CKD)	12
Diabetes mellitus (NIDDM)	10
Diabetes mellitus (IDDM)	12
Chronic liver diseases	7
History of stroke	6
Elective surgery	30
Emergency surgery	52
Site of infection, %	
Lung	55
Abdomen	25
Bone or soft tissue	5
Surgical wound	2
Urogenital	2
Primary bacteremia	7
Other	4
Organ support, %	
Mechanical ventilation	84
Vasopressor therapy	60
Renal-replacement therapy	9

Table 1. Patient baseline characteristics at the onset of sepsis.

Efforts are needed to reduce the incidence and control the negative effects of infections in patients with CKD.

The higher mortality risk among patients with CKD could be attributed to several factors, including uremia in patients with CKD. Uremia contributes to leukocyte dysfunction (lymphocyte, monocyte, neutrophil, and dendritic cells)^{22–26}. Additionally, due to decreased renal clearance, patients with CKD are more likely to exhibit accumulations of inflammatory cytokines, which attenuate immune function^{27–30}.

A major advantage of our study is the fact that we investigated, for the first time, organ-specific dysfunctions over the clinical course of disease with regard to CKD using organ-specific SOFA scores. Patients with CKD showed three higher organ-specific SOFA scores compared with patients without CKD. This result indicates more pronounced organ dysfunction in these three organ systems (cardiovascular, renal and coagulation). The higher SOFA-Cardiovascular score and the more frequent use of vasopressor therapy in patients with CKD compared with patients without CKD are consistent with previous observations demonstrating a higher demand for vasopressor administration in septic patients with renal failure³¹. The higher SOFA-Renal scores and the more frequent renal-replacement therapy

Variable	Hazard ratio	95% CI	p value
Age > 65	1.43	0.97-2.11	0.0647
Gender, male	1.05	0.73-1.51	0.7681
BMI	0.97	0.94-1.00	0.0757
SOFA	1.10	1.02-1.18	0.0057
APACHE II	1.03	1.00-1.07	0.0229
Septic shock	0.84	0.52-1.37	0.5046
Arterial hypertension	1.35	0.93-1.98	0.1116
History of cancer	1.62	1.08-2.43	0.0182
COPD	0.98	0.64-1.51	0.9496
Chronic kidney disease	2.25	1.46-3.46	0.0002
Diabetes mellitus (IDDM)	1.62	0.99-2.64	0.0527
Diabetes mellitus (NIDDM)	1.65	0.96-2.83	0.0684
Coronary heart disease	0.89	0.48-1.66	0.7359
Chronic liver disease	0.61	0.29-1.30	0.2093
History of stroke	0.75	0.36-1.57	0.4582
Gram-positive infection	0.98	0.61-1.58	0.9635
Gram-negative infection	0.94	0.65-1.36	0.7755
Fungal infection	0.80	0.55-1.16	0.2509
Elective surgery	0.90	0.55-1.45	0.6725
Emergency surgery	0.80	0.51-1.26	0.3466

Table 2. Multivariate Cox regression analysis of 90-day mortality predictors.

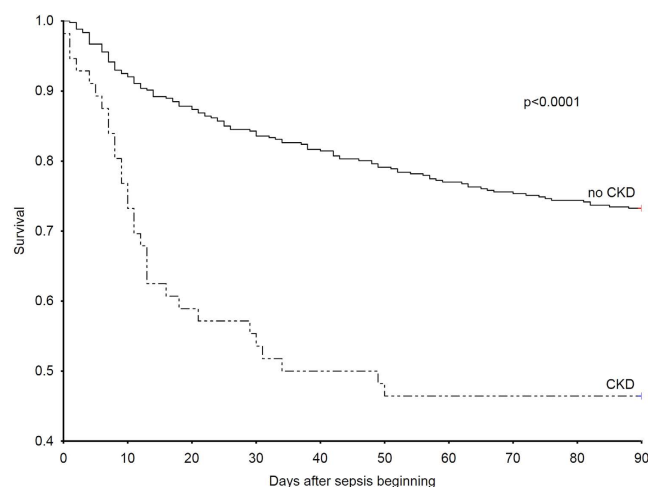


Figure 1. The Kaplan–Meier curves demonstrating survival were censored at day 90 for patients with CKD and patients without CKD. The mortality risk among the patients in the study was higher in the patients with CKD compared with the patients without CKD ($p < 0.0001$, log-rank test).

in CKD patients compared with patients without CKD are intuitive, because sepsis patients with CKD are more likely to develop renal failure of acute or chronic kidney disease^{2,19,31,32}. The observed higher SOFA-Coagulation scores, indicating severe thrombocytopenia, in the CKD group compared with the non-CKD group is in agreement with previous investigations showing that renal disease is associated with platelet dysfunction and thrombocytopenia³³. Additionally, the pronounced thrombocytopenia observed in this patient group is consistent with the higher recorded mortality risk in these patients, because thrombocytopenia was shown to be a prognostic variable for mortality in patients with sepsis⁷.

The observed high mortality risk among patients with diabetes mellitus is in accordance with several previous studies showing that DM is associated with higher mortality caused by sepsis in several populations¹¹. These findings are consistent with the fact that several aspects of immunity and host defense

	All (n = 482)	CKD (n = 56)	no CKD (n = 426)	P value
SOFA	6.8 ± 3.6	8.9 ± 4.0	6.5 ± 3.4	< 0.0001
SOFA-Respiratory score	1.9 ± 0.8	2.0 ± 0.8	1.9 ± 0.8	0.1972
SOFA-Cardiovascular score	1.5 ± 1.0	1.9 ± 1.1	1.4 ± 0.9	0.0012
SOFA-Central Nervous System score	1.9 ± 1.1	2.0 ± 1.1	1.9 ± 1.0	0.3843
SOFA-Renal score	0.8 ± 1.2	1.8 ± 1.4	0.7 ± 1.0	< 0.0001
SOFA-Coagulation score	0.3 ± 0.6	0.6 ± 0.8	0.3 ± 0.5	0.0242
SOFA-Hepatic score	0.4 ± 0.7	0.6 ± 0.8	0.4 ± 0.7	0.0599
Mortality analysis, %				
Death at day 28	19	43	15	< 0.0001
Death at day 90	30	54	27	< 0.0001
Length of stay in ICU (days)		17.6 ± 13.0	14.2 ± 15.0	0.0278
Organ support-free days:				
Ventilator-free (days)		4 ± 5	5 ± 4	0.1574
Vasopressor-free (days)		7 ± 6	11 ± 7	0.0030
Dialysis-free (days)		11 ± 8	14 ± 8	0.0002
Inflammatory values				
Leucocytes (1000/μl)		15 ± 6	13 ± 5	0.1162
CRP (mg/l) (n)		156 ± 76 (29)	152 ± 87 (201)	0.6213
Procalcitonin (ng/dl) (n)		5.1 ± 7.3 (47)	4.4 ± 11.3 (374)	0.0061
Kidney and liver values				
Urine output (ml/d)		2161 ± 1767	3175 ± 1295	< 0.0001
Urine output (ml/kg/h)		1.0 ± 0.9	1.7 ± 0.8	< 0.0001
Creatinine (mg/dl)		2.1 ± 1.2	1.1 ± 0.9	< 0.0001
Creatinine clearance (ml/min)		55 ± 37	113 ± 72	< 0.0001
Alanine aminotransferase (IU/l)		76 ± 152	105 ± 217	0.0171
Aspartate aminotransferase (IU/l)		181 ± 331	196 ± 712	0.6239
Bilirubin (mg/dl)		1.4 ± 1.6	1.2 ± 2.1	0.2377
Additional laboratory values				
Lactate (mmol/l)		2.2 ± 1.7	1.6 ± 0.9	0.0019
Base excess (mmol/l)		0.6 ± 5.3	3.0 ± 4.0	0.0014
Platelets (1000/μl)		248 ± 162	315 ± 156	0.0004
Hematocrit (%)		27.4 ± 2.7	27.7 ± 3.6	0.8515

Table 3. Severity of disease with regard to chronic kidney disease.

are altered in patients with DM³⁴. Similarly, the high risk of mortality among patients with a history of cancer in our cohort is consistent with the results from previous studies⁹ and could be attributed to the fact that patients with cancer are at a high risk for developing a state of immunosuppression resulting from cancer therapy or the malignancy itself, thus leading to severe infection and sepsis, which is a major cause of mortality in this group^{35,36}.

Our study confirms the prognostic value of the initial morbidity scores, SOFA and APACHE II³⁷. Furthermore, the significant association between age over 65 years and higher mortality risk is plausible.

Our study provides an important update of the prognostic value of the most common chronic medical conditions on the 90-day mortality risk among patients with sepsis. We found the highest mortality risk among patients with CKD, and much effort must be made to minimize the mortality risk in this group. Researchers and clinicians need to develop new treatment strategies, both preventive and curative, that are specially adapted for this patient group.

Methods

Patients. Adult Caucasian patients admitted to the surgical ICUs at the University Medical Center Goettingen (UMG) between April 2012 and July 2014 were screened daily according to the American College of Chest Physicians/Society of Critical Care Medicine (ACCP/SCCM) criteria for sepsis, severe sepsis, or septic shock^{1,38}. Because interracial genetic differences might affect the clinical course of infectious diseases, we exclusively recruited Caucasians, who represent the majority of patients admitted to our surgical ICUs, into this prospective clinical investigation. Caucasian origin was assessed by questioning the patients, their next of kin or their legal representatives. This study conformed to the ethical principles of the Declaration of Helsinki (Seoul, 2008), and the study protocol was approved by the institutional ethics committee of the University of Goettingen in Goettingen, Germany. The study was performed in accordance with relevant guidelines and regulations. The methods were performed in accordance with the approved guidelines. Written informed consent was obtained either from the patients or from their legal representatives.

Exclusion criteria. As described previously³⁹, the exclusion criteria were: (1) age younger than 18; (2) pregnancy or breastfeeding (3) receipt of immunosuppressive therapy; (4) documented myocardial infarction within the previous 6 weeks; (5) New York Heart Association functional class IV chronic heart failure; (6) human immunodeficiency virus infection; (7) a do not resuscitate or do not treat order; (8) expected death within 28 days due to uncorrectable medical condition (e.g., poorly controlled neoplasm); (9) chronic vegetative state with pronounced neurological impairment; (10) current participation in any clinical trial (of a drug or device); (11) inability to be fully evaluated during the study period; and (12) study-site employee or a family member of a study-site employee.

Data collection and clinical endpoints. Upon enrollment, the patient's demographic characteristics, type of sepsis (sepsis/severe sepsis and septic shock), chronic comorbidities, recent surgical history (elective surgery, emergency surgery), site of infection and organ support were recorded. All of the patients were followed for 90 days, and the mortality risk within this observational period was recorded as the primary outcome. Sequential Organ Failure Assessment (SOFA)⁴⁰ and Acute Physiology and Chronic Health Evaluation (APACHE) II⁴¹ scores were evaluated at the onset of sepsis. Organ dysfunction was reassessed over 28 days in the ICU using organ-specific SOFA scores to monitor morbidity. Organ failure (as assessed by SOFA scores), organ support requirements (mechanical ventilation, vasopressor therapy and renal-replacement therapy) and the length of ICU stay were recorded as secondary outcomes. Several relevant laboratory values were recorded as secondary variables. All of the relevant clinical data were obtained from the electronic patient record system (IntelliSpace Critical Care and Anesthesia (ICCA); Philips Healthcare, Andover, Massachusetts, USA); all medical records could be found in this system. Information regarding medical history and preexisting medical history were completed by examining previous physicians' notes, through anamnestic questionnaires and by consulting each patient's family doctor.

Statistical analyses. The statistical analyses were performed using Statistica software (version 10; StatSoft, Tulsa, Oklahoma, USA). The significance of categorical variables was calculated using two-sided Fisher's exact or chi-square tests, as appropriate. Two continuous variables were compared using the Mann-Whitney test. We performed a multivariate Cox regression analysis to examine the impact of common medical conditions on survival; several covariates, including mortality predictors (age, SOFA, APACHE II) and potential confounders (gender, BMI, septic shock, infection type, recent surgical history) were included in this model. Time-to-event data were compared using the log-rank test from the Statistica package for Kaplan-Meier survival analysis. A power calculation was performed using the Statistica package for power analysis. A p-value of <0.05 was considered statistically significant.

References

- Levy, M. M. *et al.* 2001 SCCM/ESICM/ACCP/ATS/SIS International Sepsis Definitions Conference. *Intensive Care Med.* **29**, 530–538, doi:10.1007/s00134-003-1662-x (2003).
- Angus, D. C. *et al.* Epidemiology of severe sepsis in the United States: analysis of incidence, outcome, and associated costs of care. *Crit. Care Med.* **29**, 1303–1310 (2001).
- Rangel-Frausto, M. S. *et al.* The natural history of the systemic inflammatory response syndrome (SIRS). A prospective study. *Jama* **273**, 117–123 (1995).
- Lagu, T. *et al.* Hospitalizations, costs, and outcomes of severe sepsis in the United States 2003 to 2007. *Crit Care Med.* **40**, 754–761, doi:10.1097/CCM.0b013e318232db65 (2012).
- Alberti, C. *et al.* Epidemiology of sepsis and infection in ICU patients from an international multicentre cohort study. *Intensive Care Med.* **28**, 108–121, doi:10.1007/s00134-001-1143-z (2002).
- Martin, G. S., Mannino, D. M., Eaton, S. & Moss, M. The epidemiology of sepsis in the United States from 1979 through 2000. *N Engl. J. Med.* **348**, 1546–1554, doi:10.1056/NEJMoa022139 (2003).
- Shapiro, N. I. *et al.* Mortality in Emergency Department Sepsis (MEDS) score: a prospectively derived and validated clinical prediction rule. *Crit Care Med.* **31**, 670–675, doi:10.1097/01.ccm.0000054867.01688.d1 (2003).
- Pittet, D. *et al.* Importance of pre-existing co-morbidities for prognosis of septicemia in critically ill patients. *Intensive Care Med.* **19**, 265–272 (1993).
- Williams, M. D. *et al.* Hospitalized cancer patients with severe sepsis: analysis of incidence, mortality, and associated costs of care. *Crit Care* **8**, R291–298, doi:10.1186/cc2893 (2004).

10. Maizel, J. *et al.* Impact of non-dialysis chronic kidney disease on survival in patients with septic shock. *BMC Nephrol.* **14**, 77, doi:10.1186/1471-2369-14-77 (2013).
11. Sarnak, M. J. & Jaber, B. L. Mortality caused by sepsis in patients with end-stage renal disease compared with the general population. *Kidney Int.* **58**, 1758–1764, doi:10.1111/j.1523-1755.2000.00337.x (2000).
12. Esper, A. M. *et al.* The role of infection and comorbidity: Factors that influence disparities in sepsis. *Crit Care Med.* **34**, 2576–2582, doi:10.1097/01.ccm.0000239114.50519.0e (2006).
13. Tran, D. D. *et al.* Age, chronic disease, sepsis, organ system failure, and mortality in a medical intensive care unit. *Crit Care Med.* **18**, 474–479 (1990).
14. Guidet, B. *et al.* Incidence and impact of organ dysfunctions associated with sepsis. *Chest* **127**, 942–951, doi:10.1378/chest.127.3.942 (2005).
15. Alherti, C. *et al.* Influence of systemic inflammatory response syndrome and sepsis on outcome of critically ill infected patients. *Am J. Respir Crit. Care Med.* **168**, 77–84, doi:10.1164/rccm.200208-785OC (2003).
16. Angus, D. C. The lingering consequences of sepsis: a hidden public health disaster? *Jama* **304**, 1833–1834, doi:10.1001/jama.2010.1546 (2010).
17. Khamsi, R. Execution of sepsis trials needs an overhaul, experts say. *Nat. Med.* **18**, 998–999, doi:10.1038/nm0712-998b (2012).
18. Dellinger, R. P. *et al.* Surviving sepsis campaign: international guidelines for management of severe sepsis and septic shock; 2012. *Crit. Care Med.* **41**, 580–637, doi:10.1097/CCM.0b013e31827e83af (2013).
19. Doi, K. *et al.* Pre-existing renal disease promotes sepsis-induced acute kidney injury and worsens outcome. *Kidney Int.* **74**, 1017–1025, doi:10.1038/ki.2008.346 (2008).
20. Dalrymple, L. S. & Go, A. S. Epidemiology of acute infections among patients with chronic kidney disease. *Clin. J. Am. Soc. Nephrol.* **3**, 1487–1493, doi:10.2215/cjn.01290308 (2008).
21. Naqvi, S. B. & Collins, A. J. Infectious complications in chronic kidney disease. *Adv Chronic Kidney Dis.* **13**, 199–204, doi:10.1053/j.ackd.2006.04.004 (2006).
22. Cohen, G., Haag-Weber, M. & Horl, W. H. Immune dysfunction in uremia. *Kidney Int. Suppl.* **62**, S79–82 (1997).
23. Lim, W. H., Kireta, S., Leedham, E., Russ, G. R. & Coates, P. T. Uremia impairs monocyte and monocyte-derived dendritic cell function in hemodialysis patients. *Kidney Int.* **72**, 1138–1148, doi:10.1038/sj.ki.5002425 (2007).
24. Minnaganti, V. R. & Cunha, B. A. Infections associated with uremia and dialysis. *Infect. Dis. Clin. North Am.* **15**, 385–406, viii (2001).
25. Pesanti, E. L. Immunologic defects and vaccination in patients with chronic renal failure. *Infect. Dis. Clin. North Am.* **15**, 813–832 (2001).
26. Vanholder, R. & Ringoir, S. Infectious morbidity and defects of phagocytic function in end-stage renal disease: a review. *J. Am. Soc. Nephrol.* **3**, 1541–1554 (1993).
27. Carrero, J. J., Yilmaz, M. I., Lindholm, B. & Stenvinkel, P. Cytokine dysregulation in chronic kidney disease: how can we treat it? *Blood Purif.* **26**, 291–299, doi:10.1159/000126926 (2008).
28. Stenvinkel, P. *et al.* Strong association between malnutrition, inflammation, and atherosclerosis in chronic renal failure. *Kidney Int.* **55**, 1899–1911, doi:10.1046/j.1523-1755.1999.00422.x (1999).
29. Stenvinkel, P. *et al.* IL-10, IL-6, and TNF- α : central factors in the altered cytokine network of uremia--the good, the bad, and the ugly. *Kidney Int.* **67**, 1216–1233, doi:10.1111/j.1523-1755.2005.00200.x (2005).
30. Zoccali, C., Mallamaci, F. & Tripepi, G. Inflammation and atherosclerosis in end-stage renal disease. *Blood Purif.* **21**, 29–36, doi:10.1159/000067852 (2003).
31. Oppert, M. *et al.* Acute renal failure in patients with severe sepsis and septic shock--a significant independent risk factor for mortality: results from the German Prevalence Study. *Nephrol Dial Transplant* **23**, 904–909, doi:10.1093/ndt/gfm610 (2008).
32. Uchino, S. *et al.* Acute renal failure in critically ill patients: a multinational, multicenter study. *Jama* **294**, 813–818, doi:10.1001/jama.294.7.813 (2005).
33. Boccardo, P., Remuzzi, G. & Galbusera, M. Platelet dysfunction in renal failure. *Semin Thromb Hemost* **30**, 579–589, doi:10.1055/s-2004-835678 (2004).
34. Joshi, N., Caputo, G. M., Weitekamp, M. R. & Karchmer, A. W. Infections in patients with diabetes mellitus. *N Engl. J. Med.* **341**, 1906–1912, doi:10.1056/nejm199912163412507 (1999).
35. Chanock, S. Evolving risk factors for infectious complications of cancer therapy. *Hematol Oncol. Clin. North Am.* **7**, 771–793 (1993).
36. Allegretta, G. J., Weisman, S. J. & Altman, A. J. Oncologic emergencies II. Hematologic and infectious complications of cancer and cancer treatment. *Pediatr Clin North Am* **32**, 613–624 (1985).
37. Ferreira, F. L., Bota, D. P., Bross, A., Melot, C. & Vincent, J. L. Serial evaluation of the SOFA score to predict outcome in critically ill patients. *Jama* **286**, 1754–1758 (2001).
38. Bone, R. C. *et al.* Definitions for sepsis and organ failure and guidelines for the use of innovative therapies in sepsis. The ACCP/SCCM Consensus Conference Committee. American College of Chest Physicians/Society of Critical Care Medicine. 1992. *Chest* **136**, e28 (2009).
39. Mansur, A. *et al.* The regulatory toll-like receptor 4 genetic polymorphism rs11536889 is associated with renal, coagulation and hepatic organ failure in sepsis patients. *J. Transl. Med.* **12**, 177, doi:10.1186/1479-5876-12-177 (2014).
40. Vincent, J. L. *et al.* Use of the SOFA score to assess the incidence of organ dysfunction/failure in intensive care units: results of a multicenter, prospective study. Working group on “sepsis-related problems” of the European Society of Intensive Care Medicine. *Crit Care Med* **26**, 1793–1800 (1998).
41. Knaus, W. A., Draper, E. A., Wagner, D. P. & Zimmerman, J. E. APACHE II: a severity of disease classification system. *Crit. Care Med.* **13**, 818–829 (1985).

Acknowledgments

The authors thank the staff of the ICUs of the Department of Anesthesiology and the Department of General and Visceral Surgery, all of whom were involved in patient care and monitoring. The authors also thank Benjamin Liese, Simon Wilmers, Yvonne Klee, Sebastian Gerber and Chang Ho Hong and for their assistance with the data acquisition. This study was supported by the German Research Foundation (DFG) and the Open Access Publication Funds of Göttingen University.

Author Contributions

All authors contributed to the study design, data acquisition, or data analysis and interpretation. Specifically, E.M. and M.S. performed the clinical data collection. I.B., A.F.P., M.G. and M.B. participated in the study design and clinical data monitoring or data interpretation. T.B. contributed to the study

design and conception, performed the bioinformatics analysis, and performed and approved the statistical analyses. A.M., E.M., M.S., and J.H. designed the study, performed the statistical analyses, and drafted the manuscript. All authors were involved either in the drafting or the revision of the manuscript. All authors have approved the final version of the manuscript.

Additional Information

Competing financial interests: The authors declare no competing financial interests.

How to cite this article: Mansur, A. *et al.* Chronic kidney disease is associated with a higher 90-day mortality than other chronic medical conditions in patients with sepsis. *Sci. Rep.* **5**, 10539; doi: 10.1038/srep10539 (2015).



This work is licensed under a Creative Commons Attribution 4.0 International License. The images or other third party material in this article are included in the article's Creative Commons license, unless indicated otherwise in the credit line; if the material is not included under the Creative Commons license, users will need to obtain permission from the license holder to reproduce the material. To view a copy of this license, visit <http://creativecommons.org/licenses/by/4.0/>