

The *Gossypium longicalyx* Genome as a Resource for Cotton Breeding and Evolution

Corrinne E. Grover,* Mengqiao Pan,[†] Daojun Yuan,[‡] Mark A. Arick,[§] Guanjing Hu,^{*} Logan Brase,^{**} David M. Stelly,^{††} Zefu Lu,[‡] Robert J. Schmitz,[‡] Daniel G. Peterson,[§] Jonathan F. Wendel,^{*} and Joshua A. Udall^{**§§,1}

*Ecology, Evolution, and Organismal Biology Dept., Iowa State University, Ames, IA, 50010, [†]State Key Laboratory of Crop Genetics and Germplasm Enhancement, Cotton Hybrid R & D Engineering Center, Nanjing Agricultural University, Nanjing, 210095, China, [‡]College of Plant Science and Technology, Huazhong Agricultural University, Wuhan, Hubei, 430070, China, [§]Institute for Genomics, Biocomputing & Biotechnology, Mississippi State University, ^{**}Division of Biology and Biomedical Sciences, Washington University in St. Louis, St. Louis, MO 63110, ^{††}Department of Soil and Crop Sciences, Texas A&M University, College Station, 77843, ^{**}USDA/Agricultural Research Service, Crop Germplasm Research Unit, College Station, TX 77845, and ^{§§}Department of Genetics, University of Georgia, Athens, GA 30602

ORCID IDs: 0000-0003-3878-5459 (C.E.G.); 0000-0001-6007-5571 (D.Y.); 0000-0002-7207-3052 (M.A.A.); 0000-0001-8552-7394 (G.H.); 0000-0002-7175-3208 (L.B.); 0000-0002-3468-4119 (D.M.S.); 0000-0001-7538-6663 (R.J.S.); 0000-0002-0274-5968 (D.G.P.); 0000-0003-2258-5081 (J.F.W.); 0000-0003-0978-4764 (J.A.U.)

ABSTRACT Cotton is an important crop that has made significant gains in production over the last century. Emerging pests such as the reniform nematode have threatened cotton production. The rare African diploid species *Gossypium longicalyx* is a wild species that has been used as an important source of reniform nematode immunity. While mapping and breeding efforts have made some strides in transferring this immunity to the cultivated polyploid species, the complexities of interploid transfer combined with substantial linkage drag have inhibited progress in this area. Moreover, this species shares its most recent common ancestor with the cultivated A-genome diploid cottons, thereby providing insight into the evolution of long, spinnable fiber. Here we report a newly generated *de novo* genome assembly of *G. longicalyx*. This high-quality genome leveraged a combination of PacBio long-read technology, Hi-C chromatin conformation capture, and BioNano optical mapping to achieve a chromosome level assembly. The utility of the *G. longicalyx* genome for understanding reniform immunity and fiber evolution is discussed.

KEYWORDS

Gossypium longicalyx
nematode
resistance
cotton fiber
genome
sequence
PacBio

Cotton (genus *Gossypium*) is an important crop that provides the largest natural source of fiber. Colloquially, the term cotton refers to one of four domesticated species, primarily the tetraploid *G. hirsutum* ($n = 26$), which is responsible for over 98% of cotton production worldwide (Kranthi 2018). *Gossypium* contains over 50 additional

wild species related to the domesticated cottons (partitioned into groups of closely related species designated “A-G” and “K” for diploids; “AD” for tetraploids), which serve as potential sources of disease and pest resistance. Among these, *Gossypium longicalyx* J.B. Hutch. & B.J.S. Lee ($n = 13$) is the only representative of the diploid F-genome (Wendel and Grover 2015) and the only species with immunity to reniform nematode infection (Yik and Birchfield 1984). Discovered only 60 years ago (Hutchinson and B. J. S. Lee 1958), it is both cytogenetically differentiated from members of the other genome groups (Phillips 1966) and morphologically isolated (Fryxell 1971, 1992). Importantly, *G. longicalyx* is sister to the A-genome cottons (Wendel and Albert 1992; Wendel and Grover 2015; Chen *et al.* 2016), *i.e.*, *G. arboreum* and *G. herbaceum* (both $n = 13$), the only diploids with long, spinnable fiber.

Interest in the genome of *G. longicalyx* is twofold. First, broad-scale screening of the cotton germplasm collection indicates that domesticated cotton lacks appreciable natural resistance to reniform

Copyright © 2020 Grover *et al.*

doi: <https://doi.org/10.1534/g3.120.401050>

Manuscript received January 6, 2020; accepted for publication March 1, 2020; published Early Online March 2, 2020.

This is an open-access article distributed under the terms of the Creative Commons Attribution 4.0 International License (<http://creativecommons.org/licenses/by/4.0/>), which permits unrestricted use, distribution, and reproduction in any medium, provided the original work is properly cited. Supplemental material available at figshare: <https://doi.org/10.25387/g3.11865921>.

¹Corresponding author: Crop Germplasm Research Unit, USDA-ARS, 2881 F&B Road, College Station, TX 77845. E-mail: Joshua.Udall@usda.gov

nematode (Birchfield and Brister 1963; Yik and Birchfield 1984), and while several other species exhibit degrees of resistance, only *G. longicalyx* exhibits immunity to infection (Yik and Birchfield 1984). This is significant as reniform nematode has emerged as a major source of cotton crop damage, reducing cotton production by over 205 million bales per year (Lawrence *et al.* 2015) and accounting for ~11% of the loss attributable to pests (Khanal *et al.* 2018). Current reniform resistant lines are derived from complex breeding schemes which are required to introgress reniform immunity from the diploid *G. longicalyx* into polyploid *G. hirsutum* (Bell and Robinson 2004; Dighe *et al.* 2009; Khanal *et al.* 2018); however, undesirable traits have accompanied this introgression (Nichols *et al.* 2010) extreme stunting of seedlings and plants exposed to dense nematode populations, prohibiting commercial deployment (Zheng *et al.* 2016).

The genome of *G. longicalyx* is also valuable because it is phylogenetically sister to the only diploid clade with spinnable fiber (Wendel and Albert 1992; Wendel and Grover 2015; Chen *et al.*, 2016), the A-genome species, which contributed the maternal ancestor to polyploid cotton. Consequently, there has been interest in this species as the ancestor to spinnable fiber (Hovav *et al.* 2008; Paterson *et al.* 2012), although progress has been limited due to lack of genomic resources in *G. longicalyx*. Comparisons between the *G. longicalyx* genome and other cotton genomes, including the domesticated diploids (Du *et al.* 2018), may provide clues into the evolutionary origin of “long” fiber.

Here we describe a high-quality, *de novo* genome sequence for *G. longicalyx*, a valuable resource for understanding nematode immunity in cotton and possibly other species. This genome also provides a foundation to understand the evolutionary origin of spinnable fiber in *Gossypium*.

METHODS & MATERIALS

Plant material and sequencing methods

Leaf tissue of mature *G. longicalyx* (F1-1) was collected from a Brigham Young University (BYU) greenhouse. DNA was extracted using CTAB techniques (Kidwell and Osborn 1992), and the amount recovered was measured via Qubit Fluorometer (ThermoFisher, Inc.). The sequencing library was constructed by the BYU DNA Sequencing Center (DNASC) using only fragments >18 kb, which were size selected on the BluePippen (Sage Science, LLC) and verified in size using a Fragment Analyzer (Advanced Analytical Technologies, Inc). Twenty-six PacBio cells were sequenced from a single library on the Pacific Biosciences Sequel system. Resulting reads were assembled using Canu V1.6 using default parameters (Koren *et al.* 2017) to create a sequence assembly called Longicalyx_V1.0, composed of 229 large contigs (Supplemental Figure 1). This draft assembly was combined with Chicago HiRise (Koch *et al.* 2016; Putnam *et al.* 2016) + Dovetail Hi-C libraries by Dovetail Genomics to produce an intermediate assembly, Longicalyx_V3.0.

High-molecular weight DNA was extracted from young *G. longicalyx* leaves and subsequently purified, nicked, labeled, and repaired according to Bionano Plant protocol and standard operating procedures for the Irys platform. BssSI was used in conjunction with the IrysSolve pipeline to assemble an optical map on the BYU Fulton SuperComputing cluster. The resulting optical map was aligned to the assembly named Longicalyx_V3.0 using an *in silico* labeled reference sequence. Bionano maps linked large contigs present in this assembly, producing 17 large scaffolds (Longicalyx_V4.0).

Minion sequencing libraries were created and sequenced following the standard protocol from Oxford Nanopore. Scaffolds from

Longicalyx_V4.0 were polished (Supplemental File 1) with existing Illumina (SRR1174179 and SRR1174182 from the NCBI Short Read Archive) and the newly generated Minion data for *G. longicalyx* using both PBjelly (English *et al.* 2012) and GapFiller (Boetzer and Pirvano 2012) to produce the final assembly, Longicalyx_V5.0.

Repeat and gene annotation

Repeats were identified using two methods. The first is a homology-based approach, *i.e.*, a combination of RepeatMasker (Smit *et al.* 2015) and “One code to find them all” (Bailly-Bechet *et al.* 2014), whereas the second method (*i.e.*, RepeatExplorer; (Novák *et al.* 2010) clusters reads based on sequence similarity and automatically annotates the most abundant cluster using RepeatMasker. Each RepeatMasker run used a custom library, which combines Repbase 23.04 repeats (Bao *et al.* 2015) with cotton-specific repeats. Default parameters were run, except the run was “sensitive” and was set to mask only TEs (no low-complexity). Parameters are available <https://github.com/Wendellab/longicalyx>. “One code to find them all” was used to aggregate multiple hits from the first method (RepeatMasker) into TE models using default parameters. The resulting output was aggregated and summarized in R/3.6.0 (R Core Team 2017) using *dplyr*/0.8.1 (Wickham *et al.* 2015). Cluster results were obtained from (Grover *et al.* 2019) and https://github.com/IGBB/D_Cottons_USDA, and these were parsed in R/3.6.0 (R Core Team 2017). All code is available at <https://github.com/Wendellab/longicalyx>.

RNA-Seq libraries were generated from *G. longicalyx* leaf (CL), floral (FF), and stem tissues (FS) to improve genome annotation. RNA-seq libraries were independently constructed by BGI Americas (Davis, CA) using Illumina TruSeq reagents and subsequently sequenced (single-end, 50 bp). The newly sequenced *G. longicalyx* RNA-seq was combined with existing RNA-seq from *G. longicalyx* (SRR1174179) as well as two closely related species, *i.e.*, *G. herbaceum* (developing fibers and seed; PRJNA595350 and SRR959585, respectively) and *G. arboreum* (5 seed libraries and 1 seedling; SRR617075, SRR617073, SRR617068, SRR617067, SRR959590, and SRR959508). RNA-seq libraries were mapped to the hard-masked *G. longicalyx* genome using hisat2 [v2.1.0] (Kim *et al.* 2015). BRAKER2 [v2.1.2] (Hoff *et al.* 2019) was used in conjunction with GeneMark [v4.36] (Borodovsky and Lomsadze 2011) generated annotations to train Augustus [v3.3.2] (Stanke *et al.* 2006). Mikado [v1.2.4] (Venturini *et al.* 2018) was used to produce high quality RNA-seq based gene predictions by combining the RNA-seq assemblies produced by StringTie [v1.3.6] (Pertea *et al.* 2015) and Cufflinks [v2.2.1] (Ghosh and Chan 2016) with a reference-guided assembly from Trinity [v2.8.5] (Grabherr *et al.* 2011) and a splice junction analysis from Portcullis [v1.2.2] (Mapleson *et al.* 2018). The Trinity assembly was formatted using GMAP [v2019-05-12] (Wu and Watanabe 2005). MAKER2 [v2.31.10] (Holt and Yandell 2011; Campbell *et al.* 2014) was used to integrate gene predictions from (1) BRAKER2 trained Augustus, (2) GeneMark, and (3) Mikado, also using evidence from all *Gossypium* ESTs available from NCBI (nucleotide database filtered on “txid3633” and “is_est”) and a database composed of all curated proteins in Uniprot Swissprot [v2019_07] (UniProt Consortium 2008) combined with the annotated proteins from the *G. hirsutum* (https://www.cottongen.org/species/Gossypium_hirsutum/jgi-AD1_genome_v1.1) and *G. raimondii* (n = 13; Paterson *et al.* 2012) genomes. Maker scored each gene model using the annotation edit distance (AED - (Eilbeck *et al.* 2009; Holt and Yandell 2011; Yandell and Ence 2012) metric based on EST and protein evidence provided. Gene models with an AED greater than 0.47 were removed from further analyses, and the

remaining gene models were functionally annotated using InterProScan [v5.35-74.0] (Jones *et al.* 2014) and BlastP [v2.9.0+] (Camacho *et al.* 2009) searches against the Uniprot SwissProt database. Orthologs between the *G. longicalyx* annotations and the existing annotations for *G. arboreum* (Du *et al.* 2018), *G. raimondii* (Paterson *et al.* 2012), *G. hirsutum* (Hu *et al.* 2019), and *G. barbadense* (n = 26; Hu *et al.* 2019) were predicted by OrthoFinder using default settings (Emms and Kelly 2015, 2019). All genomes are hosted through CottonGen (<https://www.cottongen.org>; Yu *et al.* 2014) and running parameters are available from <https://github.com/Wendellab/longicalyx>.

ATAC-seq and data analysis

ATAC-seq was performed as described previously (Lu *et al.* 2017). For each replicate, approximately 200 mg freshly collected leaves or flash frozen leaves were immediately chopped with a razor blade in ~1 ml of pre-chilled lysis buffer (15 mM Tris-HCl pH 7.5, 20 mM NaCl, 80 mM KCl, 0.5 mM spermine, 5 mM 2-mercaptoethanol, 0.2% Triton X-100). The chopped slurry was filtered twice through miracloth and once through a 40 μ m filter. The crude nuclei were stained with DAPI and loaded into a flow cytometer (Beckman Coulter MoFlo XDP). Nuclei were purified by flow sorting and washed in accordance with Lu *et al.* (Lu *et al.* 2017). The sorted nuclei were incubated with 2 μ l Tn5 transposomes in 40 μ l of tagmentation buffer (10 mM TAPS-NaOH pH 8.0, 5 mM MgCl₂) at 37° for 30 min without rotation. The integration products were purified using a Qiagen MinElute PCR Purification Kit or NEB Monarch DNA Cleanup Kit and then amplified using Phusion DNA polymerase for 10-13 cycles. PCR cycles were determined as described previously (Buenrostro *et al.* 2013). Amplified libraries were purified with AMPure beads to remove primers. ATAC-seq libraries were sequenced in paired-end 35 bp at the University of Georgia Genomics & Bioinformatics Core using an Illumina NextSeq 500 instrument.

Reads were adapter and quality trimmed, and then filtered using “Trim Galore” [v0.4.5] (Krueger 2015). Clean reads were subsequently aligned to the Longicalyx_V5.0 assembly using Bowtie2 [v2.3.4] (Langmead and Salzberg 2012) with the parameters “-no-mixed-no-discordant-no-unal-dovetail”. Duplicate reads were removed using Picard [v2.17.0] with default parameters (<http://broadinstitute.github.io/picard/>). Only uniquely mapped read pairs with a quality score of at least 20 were kept for peak calling. Phantompeakqualtools [v1.14] (Landt *et al.* 2012) was used to calculate the strand cross-correlation, and deepTools [v2.5.2] (Ramírez *et al.* 2016) was used to calculate correlation between replicates. The peak calling tool from HOMER [v4.10] (Heinz *et al.* 2010), *i.e.*, *findpeaks*, was run in “region” mode and with the minimal distance between peaks set to 150 bp. MACS2 [v2.1.1] (Zhang *et al.* 2008) *callpeak*, a second peak-calling algorithm, was run with the parameter “-f BAMPE” to analyze only properly paired alignments, and putative peaks were filtered using default settings and false discovery rate (FDR) < 0.05. Due to the high level of mapping reproducibility (Pearson’s correlation $r = 0.99$ and Spearman correlation $r = 0.77$ by deepTools), peaks were combined and merged between replicates for each tool using BEDTools [v2.27.1] (Quinlan 2014). BEDTools was also used to intersect HOMER peaks and MACS2 peaks to only retain peak regions identified by both tools as accessible chromatin regions (ACRs) for subsequent analyses.

ACRs were annotated in relation to the nearest annotated genes in the R environment [v3.5.0] as genic (gACRs; overlapping a gene), proximal (pACRs; within 2 Kb of a gene) or distal (dACRs; >2 Kb from a gene). Using R package ChIPseeker [v1.18.0] (Yu *et al.* 2015),

the distribution of ACRs was calculated around transcription start sites (TSS) and transcription termination sites (TTS), and peak distribution was visualized with aggregated profiles and heatmaps. To compare GC contents between ACRs and non-accessible genomic region, the BEDTools *shuffle* command was used to generate the distal (by excluding genic and 2 Kb flanking regions) and genic/proximal control regions (by including genic and 2 Kb flanking regions), and the *nuc* command was used to calculate GC content for each ACR and permuted control regions.

Identification of the RenLon region in *G. longicalyx*

Previous research (Dighe *et al.* 2009; Zheng *et al.* 2016) identified a marker (BNL1231) that consistently cosegregates with resistance and that is flanked by the SNP markers Gl_168758 and Gl_072641, which are all located in the region of *G. longicalyx* chromosome 11 referred to as “Ren^{Lon}”. These three markers were used as queries of gmap (Wu and Watanabe 2005) against the assembled genome to identify the genomic regions associated with each. The coordinates identified by gmap were placed in a bed file; this file was used in conjunction with the *G. longicalyx* annotation and bedtools intersect (Quinlan 2014) to identify predicted *G. longicalyx* genes contained within Ren^{Lon}. Samtools faidx (Li *et al.* 2009) was used to extract the 52 identified genes from the annotation file, which were functionally annotated using blast2go (blast2go basics; biobam) and including blastx (Altschul *et al.* 1990), gene ontology (The Gene Ontology Consortium 2019), and InterPro (Jones *et al.* 2014). Orthogroups containing each of the 52 Ren^{Lon} genes were identified from the Orthofinder results (see above).

Comparison between *G. arboreum* and *G. longicalyx* for fiber evolution

Whole-genome alignments were generated between *G. longicalyx* and either *G. arboreum*, *G. raimondii*, *G. turneri* (Udall *et al.* 2019), *G. hirsutum* (A-chromosomes), and *G. barbadense* (A-chromosomes) using Mummer (Marçais *et al.* 2018) and visualized using dotPlotly (<https://github.com/tpoorten/dotPlotly>) in R (version 3.6.0) (R Development Core Team and Others 2011). Divergence between *G. longicalyx* and *G. arboreum* or *G. raimondii* was calculated using orthogroups that contain a single *G. longicalyx* gene with a single *G. arboreum* and/or single *G. raimondii* gene. Pairwise alignments between *G. longicalyx* and *G. arboreum* or *G. raimondii* were generated using the *linsi* from MAFFT (Katoh and Standley 2013). Pairwise distances between *G. longicalyx* and *G. arboreum* and/or *G. raimondii* were calculated in R (version 3.6.0) using phangorn (Schliep 2011) and visualized using ggplot2 (Wickham 2016). To identify genes unique to species with spinnable fiber (*i.e.*, *G. arboreum* and the polyploid species), we extracted any *G. arboreum* gene contained within orthogroups composed solely of *G. arboreum* or polyploid A-genome gene annotations, and subjected these to blast2go (as above). Syntenic conservation of genes contained within the RenLon region, as compared to *G. arboreum*, was evaluated using GEvo as implemented in SynMap via COGE (Lyons and Freeling 2008; Haug-Baltzell *et al.* 2017).

Data availability

The assembled genome sequence of *G. longicalyx* is available at NCBI under PRJNA420071 and CottonGen (<https://www.cottongen.org/>). The raw data for *G. longicalyx* are also available at NCBI PRJNA420071 for PacBio and Minion, and PRJNA420070 for RNA-Seq. Supplemental material available at figshare: <https://doi.org/10.25387/g3.11865921>.

■ **Table 1 Statistics for assembly versions**

	<i>G. longicalyx</i> assemblies*			
	Longicalyx V1.0	Longicalyx V3.0	Longicalyx V4.0	Longicalyx V5.0
Method	PacBio/Canu	+Chicago HighRise+HiC	+BioNano	+IllumiNa+Minion
Coverage	79.45			
Total Contig Number	229	135	17	17
Assembly Length**	1196.17 Mb	1196.19 Mb	1190.66 Mb	1190.67 Mb
Average Contig Length	5.22 Mb	8.86 Mb	70.04 Mb	70.04 Mb
Total Length of Ns	0	18200	18000	8488
N50 value is	28.88 Mb	95.88 Mb	95.88 Mb	95.88 Mb
N90 value is	7.58 Mb	76.48 Mb	76.48 Mb	76.29 Mb

* Statistics for Longicalyx_V2.0 not calculated.

** Genome size for *G. longicalyx* is 1311 Mb (Hendrix and Stewart 2005).

RESULTS AND DISCUSSION

Genome assembly and annotation

We report a *de novo* genome sequence for *G. longicalyx*. This genome was first assembled from ~144x coverage (raw) of PacBio reads, which alone produced an assembly consisting of 229 contigs with an N50 of 28.8MB (Table 1). The contigs were scaffolded using a combination of Chicago Highrise, Hi-C, and BioNano to produce a chromosome level assembly consisting of 17 contigs with an average length of 70.4 Mb (containing only 8.4kb of gap sequence). Thirteen of the chromosomes were assembled into single contigs. Exact placement of the three unscaffolded contigs (~100 kb) was not determined, but these remaining sequences were included in NCBI with the assembled chromosomes. The final genome assembly size was 1190.7 MB, representing over 90% of the estimated genome size (Hendrix and Stewart 2005).

To assess genome assembly, we performed a BUSCO analysis of the completed genome (Waterhouse *et al.* 2017), which recovered 95.8% complete BUSCOs (from the total of 2121 BUSCO groups searched; Table 2). Most BUSCOs (86.5%) were both complete and single copy, with only 9.3% BUSCOs complete and duplicated. Less than 5% of BUSCOs were either fragmented (1.4%) or missing (2.8%), indicating a general completeness of the genome. Genome contiguity was independently verified using the LTR Assembly Index (LAI) (Ou *et al.* 2018), which is a reference-free method to assess genome contiguity by evaluating the completeness of LTR-retrotransposon assembly within the genome. This method, applied to over 100 genomes in Phytozome, suggests that an LAI between 10 and 20 should be considered “reference-quality”; the *G. longicalyx* genome reported here received an LAI score of 10.74. Comparison of the *G. longicalyx* genome to published cotton genomes (Table 2) suggests that the quality of this assembly is similar or superior to other currently available cotton genomes.

Genome annotation produced 40,181 transcripts representing 38,378 unique genes. Comparatively, the reference sequences for the related diploids *G. raimondii* (Paterson *et al.* 2012) and *G. arboreum*

(Du *et al.* 2018) recovered 37,505 and 40,960 genes, respectively. Ortholog analysis between *G. longicalyx* and both diploids suggests a simple 1:1 relationship between a single *G. longicalyx* gene and a single *G. raimondii* or *G. arboreum* gene for 67–68% of the *G. longicalyx* genes (25,637 and 26,249 genes, respectively, out of 38,378 genes; Table 3). Approximately 7–8% of the *G. longicalyx* genome (*i.e.*, 2,615 and 3,158 genes) are in “one/many” (Table 3) relationships whereby one or more *G. longicalyx* gene model(s) matches one or more *G. raimondii* or *G. arboreum* gene model(s), respectively. The remaining 5,009 genes were not placed in orthogroups with any other cotton genome, slightly higher than the 2,016 - 2,556 unplaced genes in the other diploid species used here. While this could be partly due to genome annotation differences in annotation pipelines, it is also likely due to differences in the amount of RNA-seq available for each genome.

Repeats

Transposable element (TE) content was predicted for the genome, both by *de novo* TE prediction (Bailly-Bechet *et al.* 2014; Smit *et al.* 2015) and repeat clustering (Novák *et al.* 2010). Between 44–50% of the *G. longicalyx* genome is inferred to be repetitive by RepeatMasker and RepeatExplorer, respectively. While estimates for TE categories (*e.g.*, DNA, Ty3/*gypsy*, Ty1/*cop*, etc.) were reasonably consistent between the two methods (Supplemental Table 1), RepeatExplorer recovered nearly 100 additional megabases of putative repetitive sequences, mostly in the categories of Ty3/*gypsy*, unspecified LTR elements, and unknown repetitive elements. Interestingly, RepeatMasker recovered a greater amount of sequence attributable to Ty1/*cop* and DNA elements (Supplemental Table 1); however, this only accounted for a total of 22 Mb (less than 20% of the total differences over all categories). The difference between methods with respect to each category and the total TE annotation is relatively small and may be attributable to a combination of methods (homology-based TE identification method *vs.* similarity clustering), the under-exploration

■ **Table 2 BUSCO and LAI scores for the *G. longicalyx* genome compared to existing cotton genomes**

	Complete BUSCO			Incomplete BUSCO		LAI score	Reference
	Total	Single	Duplicated	Fragmented	Missing		
<i>G. longicalyx</i>	95.80%	86.50%	9.30%	1.40%	2.80%	10.74	
<i>G. turneri</i>	95.80%	86.00%	9.80%	1.00%	3.20%	8.51	(Udall <i>et al.</i> 2019)
<i>G. raimondii</i> (BYU)	92.80%	85.10%	7.70%	2.70%	4.50%	10.57	(Udall <i>et al.</i> 2019)
<i>G. raimondii</i> (JGI)	98.00%	87.30%	10.70%	0.70%	1.30%	8.51	(Paterson <i>et al.</i> 2012)
<i>G. arboreum</i> (CRI)	94.70%	85.20%	9.50%	1.00%	4.30%	12.59	(Du <i>et al.</i> 2018)
<i>G. barbadense</i> 3-79 (HAU v2)	96.30%	12.20%	84.10%	0.80%	2.90%	10.38	(Wang <i>et al.</i> 2019)
<i>G. hirsutum</i> TM1 (HAU v1)	97.70%	14.50%	83.20%	0.50%	1.80%	10.61	(Wang <i>et al.</i> 2019)

■ **Table 3 Orthogroups between *G. longicalyx* and two related diploid species. Numbers of genes are listed and percentages within species are in parentheses. Relationships listed in the last four lines of the table represent one/many *G. longicalyx* genes relative to one or many genes from *G. arboreum* or *G. raimondii***

	<i>G. longicalyx</i>	<i>G. arboreum</i>	<i>G. raimondii</i> *
Number of genes	38,378	40,960	37,223
Genes in orthogroups	33,369 (86.9%)	38,404 (93.8%)	35,207 (94.6%)
Unassigned genes	5,009 (13.1%)	2,556 (6.2%)	2,016 (5.4%)
Orthogroups containing species**	26,591 (78.5%)	29,763 (87.8%)	29,153 (86.0%)
Genes in species-specific orthogroups**	74 (0.2%)	0	8 (0.0%)
1-to-1 relationship		26,249 (70.5%)	25,637 (68.9%)
1-to-many relationship		1,207 (3.2%)	1,153 (3.1%)
many-to-1 relationship		1,438 (3.9%)	1,172 (3.1%)
many-to-many relationship		513 (1.4%)	290 (0.8%)
* only designated primary transcripts were included		3158	8.23%
** orthogroups may contain one or more genes per species		2615	6.81%

of the cotton TE population, and sensitivity differences in each method with respect to TE age/abundance.

Because the RepeatExplorer pipeline allows simultaneous analysis of multiple samples (*i.e.*, co-clustering), we used that repeat profile for both description and comparison to the closely related sister species, *G. herbaceum* and *G. arboreum* (from subgenus *Gossypium*). Relative to other cotton species, *G. longicalyx* has an intermediate amount of TEs, as expected from its intermediate genome size (1311 Mb; genome size range for *Gossypium* diploids = 841 - 2778 Mb). Approximately half of the genome (660 Mb) is composed of repetitive sequences, somewhat less than the closely related sister (A-genome) clade, whose species are slightly bigger in total size and have slightly more repetitive sequence (~60% repetitive; Table 4). Over 80% of the *G. longicalyx* repetitive fraction is composed of Ty3/*gypsy* elements, a similar proportion to the proportion of Ty3/*gypsy* in subgenus *Gossypium* genomes. Most other element categories were roughly similar in total amount and proportion between *G. longicalyx* and the two subgenus *Gossypium* species (Supplemental Figure 2).

Chromatin accessibility in *G. longicalyx*

We performed ATAC-seq to map accessible chromatin regions (ACRs) in leaves. Two replicated ATAC-seq libraries were sequenced to ~25.7

and ~45.0 million reads per sample. The strand cross-correlation statistics supported the high quality of the ATAC-seq data, and the correlation of mapping read coverages (Pearson $r = 0.99$ and Spearman $r = 0.77$) suggested a high level of reproducibility between replicates (Supplemental Table 2). A total of 28,030 ACRs (6.4 Mb) were identified ranging mostly from 130 bp to 400 bp in length, which corresponds to ~0.5% of the assembled genome size (Supplemental Table 3). The enrichment of ACRs around gene transcription start sites (Supplemental Figure 3) suggested that these regions were functionally important and likely enriched with *cis*-regulatory elements. Based on proximity to their nearest annotated genes, these ACRs were categorized as genic (gACRs; overlapping a gene), proximal (pACRs; within 2 Kb of a gene) or distal (dACRs; >2 Kb from a gene). The gACRs and pACRs represented 12.2% and 13.2% of the total number of ACRs (952 Kb and 854 Kb in size, respectively), while approximately 75% (4.6 Mb) were categorized as dACRs, a majority of which were located over 30 Kb from the nearest gene (Figure 1). This high percentage of dACRs is greater than expected (~40% of 1 GB genome) given previous ATAC-seq studies in plants (Lu *et al.* 2019; Ricci *et al.* 2019) and may reflect challenges in annotating rare transcripts. While more thorough, species-specific RNA-seq will improve later annotation versions and refine our understanding of ACR proximity to genes, we do note that our observation of abundant dACRs and potentially long-range *cis*-regulatory elements is consistent with previous results (Lu *et al.* 2019; Ricci *et al.* 2019) The dACRs discovered here were the most GC-rich, followed by gACRs and pACRs (52%, 46%, and 44%, respectively), all of whom had GC contents significantly higher than randomly selected control regions with the same length distribution (Figure 1d). Because high GC content is associated with several distinct features that can affect the *cis*-regulatory potential of a sequence (Landolin *et al.* 2010; Wang *et al.* 2012), these results support the putative regulatory functions of ACRs.

■ **Table 4 Transposable element content in *G. longicalyx* vs. the sister clade (subsection *Gossypium*)**

	Subsection <i>Longiloba</i> <i>F-genome</i> <i>G. longicalyx</i>	Subsection <i>Gossypium</i> <i>A-genome</i>	
		<i>G. herbaceum</i>	<i>G. arboreum</i>
Genome Size	1311	1667	1711
LTR/ <i>Gypsy</i> (Ty3)	557	876	943
LTR/ <i>Copia</i> (Ty1)	39	43	41
LTR, unspecified	44	62	57
DNA (all element types)	2.3	2.7	2.4
unknown	18	27	25
Total repetitive clustered	660	1011	1067
% genome is repet	50%	61%	62%
% genome is <i>gypsy</i>	42%	53%	55%
% repet is <i>gypsy</i>	84%	87%	88%

Genomics of *G. longicalyx* reniform nematode resistance

Reniform nematode is an important cotton parasite that results in stunted growth, delayed flowering and/or fruiting, and a reduction in both yield quantity and quality (Robinson 2007; Khanal *et al.* 2018). While domesticated cotton varieties are largely vulnerable to reniform nematode (Robinson *et al.* 1997), nematode resistance is found in some wild relatives of domesticated cotton, including *G. longicalyx*, which is nearly immune (Yik and Birchfield 1984). Recent efforts to elucidate the genetic underpinnings of this resistance

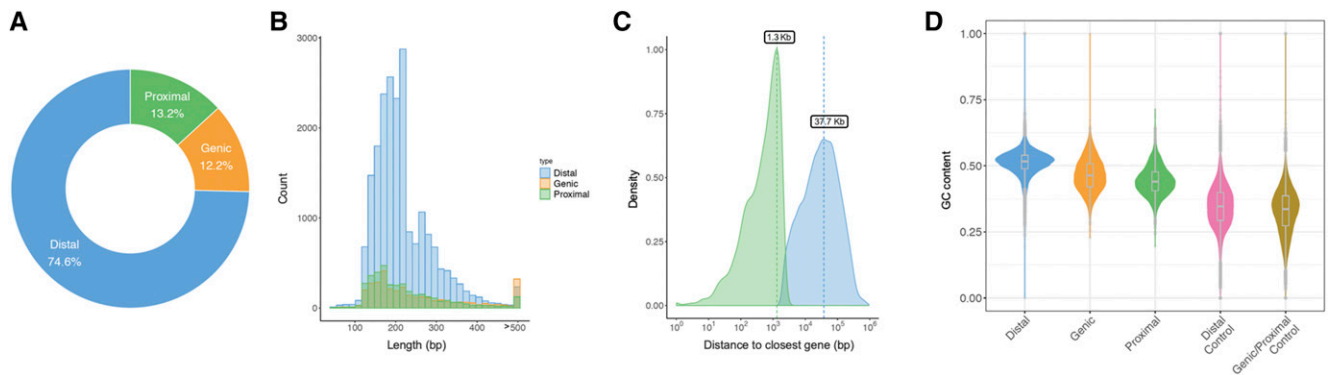


Figure 1 Accessible chromatin regions (ACRs) in the *G. longicalyx* genome. a. Categorization of ACRs in relation to nearest gene annotations - distal dACRs, proximal pACRs, and genic gACRs. b. Length distribution of ACRs that were identified by both HOMER and MACS2 contained within various genomic regions. c. Distance of gACRs and pACRs to nearest annotated genes. d. Boxplot of GC content in ACRs and control regions.

in *G. longicalyx* (i.e., REN^{lon}) identified a marker (BNL1231) that consistently cosegregates with resistance and is flanked by the SNP markers GI_168758 and GI_072641 (Dighe *et al.* 2009; Zheng *et al.* 2016). Located in chromosome 11, this region contains one or more closely-linked nearly dominant gene(s) (Dighe *et al.* 2009) that confer hypersensitivity to reniform infection (Khanal *et al.* 2018), resulting in the “stunting” phenotype; however, the possible effects of co-inherited R-genes has not been eliminated. Because the introgressed segment recombines at reduced rates in interspecific crosses, it has been difficult to fine-map the gene(s) of interest. Additionally, progress from marker-assisted selection has been lacking, as no recombinants have possessed the desired combination of reniform resistance and “non-stunting” (Zheng *et al.* 2016). Therefore, more

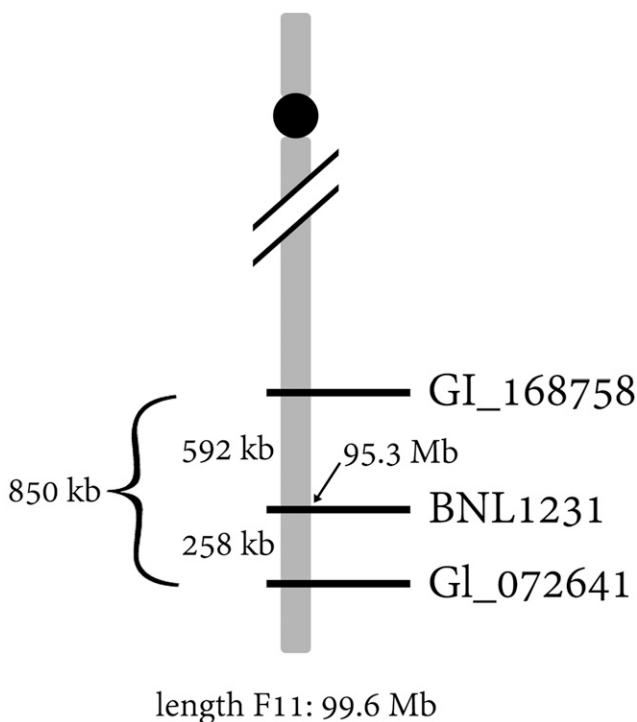


Figure 2 Diagram of the REN^{lon} region in *G. longicalyx*. Marker BNL1231, which co-segregates with nematode resistance, is located at approximately 95.3 Mb on chromosome F11.

refined knowledge of the position, identity of the resistance gene(s), mode(s) of immunity, and possible causes of “stunting” will likely catalyze progress on nematode resistance.

BLAST analysis of the three REN^{lon}-associated markers (above) to the assembled *G. longicalyx* genome identifies an 850 kb region on chromosome F11 (positions 94747040..95596585; Figure 2) containing 52 predicted genes (Supplemental Table 4). Functional annotation reveals that over half of the genes (29, or 56%) are annotated as “TMV resistance protein N-like” or similar. In tobacco, TMV resistance protein N confers a hypersensitive response to the presence of the tobacco mosaic virus (TMV; (Erickson *et al.* 1999). Homologs of this gene in different species can confer resistance to myriad other parasites and pathogens, including aphid and nematode resistance in tomato (Rossi *et al.* 1998); fungal resistance in potato (Hehl *et al.* 1999) and flax (Ellis *et al.* 2007); and viral resistance in pepper (Guo *et al.* 2017). Also included in this region are 6 genes annotated as strictosidine synthase-like (SSL), which may also function in immunity and defense (Sohani *et al.* 2009). While the six SSL-like genes are tandemly arrayed without disruption, several other genes are intercalated within the array of TMV resistance-like genes, including the 6 SSL-like genes (Supplemental Table 4).

Because there is agronomic interest in transferring nematode resistance from *G. longicalyx* to other species, we generated orthogroups between *G. longicalyx*, the two domesticated polyploid species (i.e., *G. hirsutum* and *G. barbadense*), and their model diploid progenitors (*G. raimondii* and *G. arboreum*; Supplemental Table 5; Supplemental File 2). Interestingly, many of the defense-relevant *G. longicalyx* genes in the REN^{lon} region did not cluster into orthogroups with any other species (15 out of 38; Table 5), including 11 of the 29 TMV resistance-related genes in the REN^{lon} region, and fewer were found in syntenic positions in *G. arboreum*. Most of the TMV resistance-related genes that cluster between *G. longicalyx* and other *Gossypium* species are present in a single, large orthogroup (OG0000022; Table 5), whereas the remaining TMV-resistance like genes from *G. longicalyx* are commonly in single gene orthogroups. Since disease resistance (R) proteins operate by detecting specific molecules elicited by the pathogen during infection (Martin *et al.* 2003), the increased copy number and variability among the *G. longicalyx* TMV-resistance-like genes may suggest specialization among copies.

Comparative genomics and the evolution of spinnable fiber

Cotton fiber morphology changed dramatically between *G. longicalyx* and its sister clade, composed of the A-genome cottons *G. arboreum*

■ Table 5 Orthogroup identity (by Orthofinder) for defense-related genes in the Ren^{Lon} region and the copy number per species. In *G. longicalyx*, this number includes genes found outside of the Ren^{Lon} region. *G. hirsutum* and *G. barbadense* copy numbers are split as genes found on the A or D chromosomes, or on scaffolds/contigs not placed on a chromosome

Description	Orthogroup	<i>G. longicalyx</i> gene in Ren ^{Lon} region	<i>G. longicalyx</i>	<i>G. arboreum</i>	<i>G. raimondii</i>	<i>G. hirsutum</i>	<i>G. barbadense</i>
adenylyl-sulfate kinase 3-like	OG0053444	Golon.011G359300*	1	—	—	—	—
L-type lectin-domain containing receptor kinase IV.2-like	OG0053450	Golon.011G361200	1	—	—	—	—
T-complex protein 1 subunit theta-like	OG0053447	Golon.011G360400	1	—	—	—	—
protein STRICTOSIDINE SYNTHASE-LIKE 10-like	OG0000242	Golon.011G363400	6	4	2	6 A	9 A, 5 scaffold
		Golon.011G363500					
		Golon.011G363600*					
		Golon.011G363700					
		Golon.011G363800					
	OG0053454	Golon.011G363300	1	—	—	—	—
	OG0000022	Golon.011G360100	25	22	5	10 A, 22 D	12 A, 21 D, 1 scaffold
		Golon.011G360300					
		Golon.011G360500					
		Golon.011G360700					
		Golon.011G360800					
		Golon.011G361000					
		Golon.011G361100					
		Golon.011G361400					
		Golon.011G361900					
		Golon.011G362000					
		Golon.011G362400					
		Golon.011G362700					
		Golon.011G362800					
		Golon.011G362900*					
		Golon.011G364000	4	—	—	—	—
	OG0028874**	Golon.011G359900					
		Golon.011G362600					
	OG0028544	Golon.011G363200	3	—	—	1 A	—
	OG0030067	Golon.011G360200	1	—	—	2 A	—
	OG0030069	Golon.011G362500	1	—	—	1 A	1 A
	OG0053445	Golon.011G359800	1	—	—	—	—
	OG0053446	Golon.011G360000	1	—	—	—	—
	OG0053448	Golon.011G360600	1	—	—	—	—
	OG0053451	Golon.011G361700	1	—	—	—	—
	OG0053452	Golon.011G361800	1	—	—	—	—
	OG0053453	Golon.011G362100	1	—	—	—	—
	OG0053449	Golon.011G360900	1	—	—	—	—
TMV resistance protein N-like isoform X1	OG0028874**	Golon.011G362300	4	—	—	—	—
TMV resistance protein N-like isoform X2	OG0033549	Golon.011G363900	1	—	—	—	1 A

* This gene is syntetically conserved with *G. arboreum* in the COGE-GEVO analysis.

** This orthogroup is split between two related, but separately named, annotations.

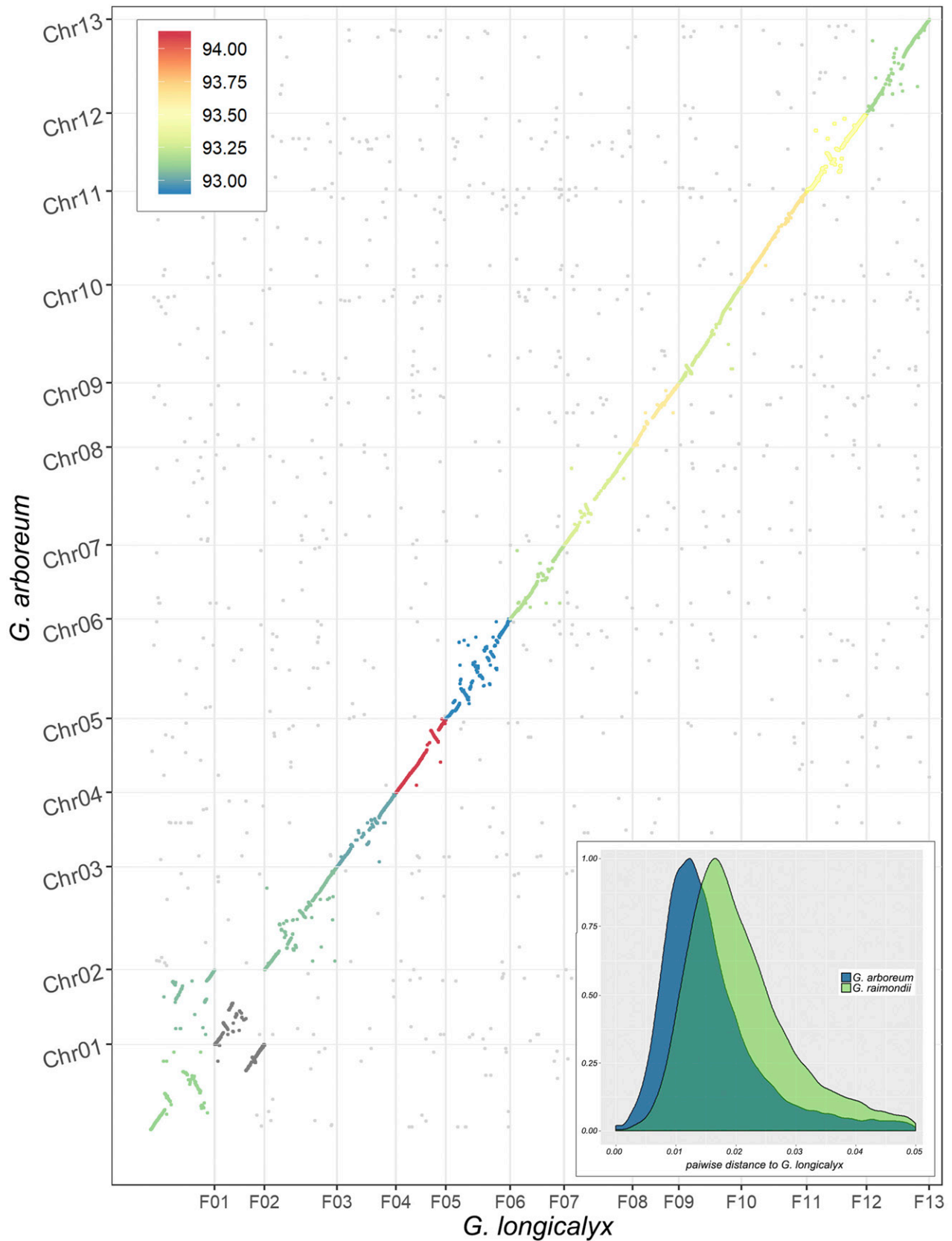


Figure 3 Synteny between *G. longicalyx* and domesticated *G. arboreum*. Mean percent identity is illustrated by the color (93–94% identity from blue to red), including intergenic regions. Lower right inset: Distribution of pairwise p-distances between coding regions of predicted orthologs (*i.e.*, exons only, start to stop) between *G. longicalyx* and either *G. arboreum* (blue) or *G. raimondii* (green). Only orthologs with <5% divergence are shown, which comprises most orthologs in each comparison.

and *G. herbaceum*. Whereas *G. longicalyx* fibers are short and tightly adherent to the seed, A-genome fibers are longer and suitable for spinning. Accordingly, there has been interest in the changes in the A-genome lineage that have led to spinnable fiber (Hovav *et al.* 2008; Paterson *et al.* 2012). Progress here has been limited by the available resources for *G. longicalyx*, relying on introgressive breeding (Nacoulima *et al.* 2012), microarray expression characterization (Hovav *et al.* 2008), and SNP-based surveys (Paterson *et al.* 2012) of *G. longicalyx* genes relative to *G. herbaceum*. As genomic resources and surveys for selection are becoming broadly available for the A-genome cottons, our understanding of the evolution of spinnable fiber becomes more tangible by the inclusion of *G. longicalyx*.

Whole-genome alignment between *G. longicalyx* and the closely related *G. arboreum* (domesticated for long fiber) shows high levels of synteny and overall sequence identity (Figure 3). In general, these two genomes are largely collinear, save for scattered rearrangements and several involving chromosomes 1 and 2; these latter may represent a combination of chromosomal evolution and/or misassembly in one or both genomes. Notably, comparison of *G. longicalyx* to other recently published genomes (Supplemental Figures 4–7) suggests that an inversion in the middle of *G. longicalyx* Chr01 exists relative to representatives of the rest of the genus; however, the other structural rearrangements are restricted to *G. arboreum* and its derived A subgenome in *G. hirsutum* and *G. barbadense*, suggesting that these differences are limited to comparisons between *G. longicalyx* and A-(sub)genomes.

Genic comparisons between *G. longicalyx* and *G. arboreum* suggests a high level of conservation. Orthogroup analysis finds a one-to-one relationship between these two species for over 70% of genes. Most of these putative orthologs exhibit <5% divergence (p-distance) in the coding regions, with over 50% of all putative orthologs exhibiting less than 1.5% divergence. Comparatively, the median divergence for putative orthologs between *G. longicalyx* and the more distantly related *G. raimondii* is approximately 2%, with ortholog divergence generally being higher in the *G. raimondii* comparison (Figure 3, inset).

Because *G. longicalyx* represents the ancestor to spinnable fiber, orthogroups containing only *G. arboreum* or polyploid A-genome gene annotations may represent genes important in fiber evolution. Accordingly, we extracted 705 *G. arboreum* genes from orthogroups composed solely of *G. arboreum* or polyploid (*i.e.*, *G. hirsutum* or *G. barbadense*) A-genome gene annotations for BLAST and functional annotation. Of these 705 genes, only 20 represent genes known to influence fiber, *i.e.*, ethylene responsive genes (10), auxin responsive genes (5), and peroxidase-related genes (5 genes; Supplemental Table 5). While other genes on this list may also influence the evolution of spinnable fiber, identifying other candidates will require further study involving comparative coexpression network analysis or explicit functional studies.

CONCLUSION

While several high-quality genome sequences are available for both wild and domesticated cotton species, each new species provides additional resources to improve both our understanding of evolution and our ability to manipulate traits within various species. In this report, we present the first *de novo* genome sequence for *G. longicalyx*, a relative of cultivated cotton. This genome not only represents the ancestor to spinnable fiber, but also contains the agronomically desirable trait of reniform nematode immunity. This resource forms a new foundation for understanding the source and mode of action that provides *G. longicalyx* with this valuable trait, and will facilitate efforts in understanding and exploiting it in modern crop species.

ACKNOWLEDGMENTS

We thank Emma Miller and Evan Long for technical assistance. We thank the National Science Foundation Plant Genome Research Program (Grant #1339412) and Cotton Inc. for their financial support. This research was funded, in part, through USDA ARS Agreements 58-6066-6-046 and 58-6066-6-059. Support for R.J.S and Z.L. was provided by NSF IOS-1856627 and the Pew Charitable Trusts. We thank BYU Fulton SuperComputer lab for their resources and generous support. We also thank ResearchIT for computational support at Iowa State University. We thank Rise Services for office accommodations in Orem, UT.

LITERATURE CITED

- Altschul, S. F., W. Gish, W. Miller, E. W. Myers, and D. J. Lipman, 1990 Basic local alignment search tool. *J. Mol. Biol.* 215: 403–410. [https://doi.org/10.1016/S0022-2836\(05\)80360-2](https://doi.org/10.1016/S0022-2836(05)80360-2)
- Bailly-Bechet, M., A. Haudry, and E. Lerat, 2014 “One code to find them all”: a perl tool to conveniently parse RepeatMasker output files. *Mob. DNA* 5: 13. <https://doi.org/10.1186/1759-8753-5-13>
- Bao, W., K. K. Kojima, and O. Kohany, 2015 Repbase Update, a database of repetitive elements in eukaryotic genomes. *Mob. DNA* 6: 11. <https://doi.org/10.1186/s13100-015-0041-9>
- Bell, A., and A. F. Robinson, 2004 Development and characteristics of triple species hybrids used to transfer reniform nematode resistance from *Gossypium longicalyx* to *Gossypium hirsutum*, pp. 422–426 in *Proceedings of the Beltwide Cotton Conferences*, naldc.nal.usda.gov.
- Birchfield, W., and L. R. Brister, 1963 Susceptibility of cotton and relatives to reniform nematode in Louisiana. *Plant Dis. Rep.* 47: 990–992.
- Boetzer, M., and W. Pirovano, 2012 Toward almost closed genomes with GapFiller. *Genome Biol.* 13: R56. <https://doi.org/10.1186/gb-2012-13-6-r56>
- Borodovsky, M., and A. Lomsadze, 2011 Eukaryotic gene prediction using GeneMark.hmm-E and GeneMark-ES. *Curr. Protoc. Bioinformatics* Chapter 4: Unit 4.6.1–Unit 4.6.10. <https://doi.org/10.1002/0471250953.bi0406s35>
- Buenrostro, J. D., P. G. Giresi, L. C. Zaba, H. Y. Chang, and W. J. Greenleaf, 2013 Transposition of native chromatin for fast and sensitive epigenomic profiling of open chromatin, DNA-binding proteins and nucleosome position. *Nat. Methods* 10: 1213–1218. <https://doi.org/10.1038/nmeth.2688>
- Camacho, C., G. Coulouris, V. Avagyan, N. Ma, J. Papadopoulos *et al.*, 2009 BLAST+: architecture and applications. *BMC Bioinformatics* 10: 421. <https://doi.org/10.1186/1471-2105-10-421>
- Campbell, M. S., C. Holt, B. Moore, and M. Yandell, 2014 Genome Annotation and Curation Using MAKER and MAKER-P. *Curr. Protoc. Bioinformatics* 48. <https://doi.org/10.1002/0471250953.bi0411s48>
- Chen, Z., K. Feng, C. E. Grover, P. Li, F. Liu *et al.*, 2016 Chloroplast DNA Structural Variation, Phylogeny, and Age of Divergence among Diploid Cotton Species. *PLoS One* 11: e0157183. <https://doi.org/10.1371/journal.pone.0157183>
- Dighe, N. D., A. F. Robinson, A. A. Bell, M. A. Menz, R. G. Cantrell *et al.*, 2009 Linkage Mapping of Resistance to Reniform Nematode in Cotton following Introgression from *Gossypium longicalyx* (Hutch. & Lee). *Crop Sci.* 49: 1151–1164. <https://doi.org/10.2135/cropsci2008.03.0129>
- Du, X., G. Huang, S. He, Z. Yang, G. Sun *et al.*, 2018 Resequencing of 243 diploid cotton accessions based on an updated A genome identifies the genetic basis of key agronomic traits. *Nat. Genet.* 50: 796–802. <https://doi.org/10.1038/s41588-018-0116-x>
- Eilbeck, K., B. Moore, C. Holt, and M. Yandell, 2009 Quantitative measures for the management and comparison of annotated genomes. *BMC Bioinformatics* 10: 67. <https://doi.org/10.1186/1471-2105-10-67>
- Ellis, J. G., P. N. Dodds, and G. J. Lawrence, 2007 Flax rust resistance gene specificity is based on direct resistance-avirulence protein interactions. *Annu. Rev. Phytopathol.* 45: 289–306. <https://doi.org/10.1146/annurev.phyto.45.062806.094331>

- Emms, D. M., and S. Kelly, 2019 OrthoFinder: phylogenetic orthology inference for comparative genomics. *Genome Biol.* 20: 238. <https://doi.org/10.1186/s13059-019-1832-y>
- Emms, D. M., and S. Kelly, 2015 OrthoFinder: solving fundamental biases in whole genome comparisons dramatically improves orthogroup inference accuracy. *Genome Biol.* 16: 157. <https://doi.org/10.1186/s13059-015-0721-2>
- English, A. C., S. Richards, Y. Han, M. Wang, V. Vee *et al.*, 2012 Mind the gap: upgrading genomes with Pacific Biosciences RS long-read sequencing technology. *PLoS One* 7: e47768. <https://doi.org/10.1371/journal.pone.0047768>
- Erickson, F. L., S. Holzberg, A. Calderon-Urrea, V. Handley, M. Axtell *et al.*, 1999 The helicase domain of the TMV replicase proteins induces the N-mediated defence response in tobacco. *Plant J.* 18: 67–75. <https://doi.org/10.1046/j.1365-313X.1999.00426.x>
- Fryxell, P. A., 1992 A revised taxonomic interpretation of *Gossypium* L. (Malvaceae). *Rheda* 2: 108–165.
- Fryxell, P. A., 1971 Phenetic analysis and the phylogeny of the diploid species of *Gossypium* L. (Malvaceae). *Evolution* 25: 554–562. <https://doi.org/10.1111/j.1558-5646.1971.tb01916.x>
- Ghosh, S., and C.-K. K. Chan, 2016 Analysis of RNA-Seq Data Using TopHat and Cufflinks. *Methods Mol. Biol.* 1374: 339–361. https://doi.org/10.1007/978-1-4939-3167-5_18
- Grabherr, M. G., B. J. Haas, M. Yassour, J. Z. Levin, D. A. Thompson *et al.*, 2011 Full-length transcriptome assembly from RNA-Seq data without a reference genome. *Nat. Biotechnol.* 29: 644–652. <https://doi.org/10.1038/nbt.1883>
- Grover, C. E., M. A. Arick, 2nd, A. Thrash, J. L. Conover, W. S. Sanders *et al.*, 2019 Insights into the evolution of the new world diploid cottons (*Gossypium*, Subgenus *Houzingenia*) based on genome sequencing. *Genome Biol. Evol.* 11: 53–71. <https://doi.org/10.1093/gbe/evy256>
- Guo, G., S. Wang, J. Liu, B. Pan, W. Diao *et al.*, 2017 Rapid identification of QTLs underlying resistance to Cucumber mosaic virus in pepper (*Cap-sicum frutescens*). *Theor. Appl. Genet.* 130: 41–52. <https://doi.org/10.1007/s00122-016-2790-3>
- Haug-Baltzell, A., S. A. Stephens, S. Davey, C. E. Scheidegger, and E. Lyons, 2017 SynMap2 and SynMap3D: web-based whole-genome synteny browsers. *Bioinformatics* 33: 2197–2198. <https://doi.org/10.1093/bioinformatics/btx144>
- Hehl, R., E. Faurie, J. Hesselbach, F. Salamini, S. Whitham *et al.*, 1999 TMV resistance gene N homologues are linked to *Synchytrium endobioticum* resistance in potato. *Theor. Appl. Genet.* 98: 379–386. <https://doi.org/10.1007/s001220051083>
- Heinz, S., C. Benner, N. Spann, E. Bertolino, Y. C. Lin *et al.*, 2010 Simple combinations of lineage-determining transcription factors prime cis-regulatory elements required for macrophage and B cell identities. *Mol. Cell* 38: 576–589. <https://doi.org/10.1016/j.molcel.2010.05.004>
- Hendrix, B., and J. M. Stewart, 2005 Estimation of the nuclear DNA content of *Gossypium* species. *Ann. Bot.* 95: 789–797. <https://doi.org/10.1093/aob/mci078>
- Hoff, K. J., A. Lomsadze, M. Borodovsky, and M. Stanke, 2019 Whole-genome annotation with BRAKER. *Methods Mol. Biol.* 1962: 65–95. https://doi.org/10.1007/978-1-4939-9173-0_5
- Holt, C., and M. Yandell, 2011 MAKER2: an annotation pipeline and genome-database management tool for second-generation genome projects. *BMC Bioinformatics* 12: 491. <https://doi.org/10.1186/1471-2105-12-491>
- Hovav, R., J. A. Udall, B. Chaudhary, E. Hovav, L. Flagel *et al.*, 2008 The evolution of spinnable cotton fiber entailed prolonged development and a novel metabolism. *PLoS Genet.* 4: e25. <https://doi.org/10.1371/journal.pgen.0040025>
- Hu, Y., J. Chen, L. Fang, Z. Zhang, W. Ma *et al.*, 2019 *Gossypium barbadense* and *Gossypium hirsutum* genomes provide insights into the origin and evolution of allotetraploid cotton. *Nat. Genet.* 51: 739–748. <https://doi.org/10.1038/s41588-019-0371-5>
- Hutchinson, J. B., and B. J. S. Lee, 1958 Notes from the East African Herbarium: IX: A New Species of *Gossypium* from Central Tanganyika. *Kew Bull.* 13: 221–223. <https://doi.org/10.2307/4109517>
- Jones, P., D. Binns, H.-Y. Chang, M. Fraser, W. Li *et al.*, 2014 InterProScan 5: genome-scale protein function classification. *Bioinformatics* 30: 1236–1240. <https://doi.org/10.1093/bioinformatics/btu031>
- Katoh, K., and D. M. Standley, 2013 MAFFT multiple sequence alignment software version 7: improvements in performance and usability. *Mol. Biol. Evol.* 30: 772–780. <https://doi.org/10.1093/molbev/mst010>
- Khanal, C., E. C. McGawley, C. Overstreet, and S. R. Stetina, 2018 The Elusive Search for Reniform Nematode Resistance in Cotton. *Phytopathology* 108: 532–541. <https://doi.org/10.1094/PHYTO-09-17-0320-RVW>
- Kidwell, K. K., and T. C. Osborn, 1992 Simple plant DNA isolation procedures, pp. 1–13 in *Plant Genomes: Methods for Genetic and Physical Mapping*, edited by Beckmann, J. S., and T. C. Osborn. Springer Netherlands, Dordrecht. https://doi.org/10.1007/978-94-011-2442-3_1
- Kim, D., B. Langmead, and S. L. Salzberg, 2015 HISAT: a fast spliced aligner with low memory requirements. *Nat. Methods* 12: 357–360. <https://doi.org/10.1038/nmeth.3317>
- Koch, L., 2016 Chicago HighRise for genome scaffolding. *Nat. Rev. Genet.* 17: 194.
- Koren, S., B. P. Walenz, K. Berlin, J. R. Miller, N. H. Bergman *et al.*, 2017 Canu: scalable and accurate long-read assembly via adaptive k-mer weighting and repeat separation. *Genome Res.* 27: 722–736.
- Kranthi, K. R., 2018 Cotton production practices: snippets from global data 2017. *The ICAC Recorder XXXVI*: 4–14.
- Krueger, F., 2015 Trim galore. A wrapper tool around Cutadapt and FastQC to consistently apply quality and adapter trimming to FastQ files.
- Landolin, J. M., D. S. Johnson, N. D. Trinklein, S. F. Aldred, C. Medina *et al.*, 2010 Sequence features that drive human promoter function and tissue specificity. *Genome Res.* 20: 890–898. <https://doi.org/10.1101/gr.100370.109>
- Landt, S. G., G. K. Marinov, A. Kundaje, P. Kheradpour, F. Pauli *et al.*, 2012 ChIP-seq guidelines and practices of the ENCODE and modENCODE consortia. *Genome Res.* 22: 1813–1831. <https://doi.org/10.1101/gr.136184.111>
- Langmead, B., and S. L. Salzberg, 2012 Fast gapped-read alignment with Bowtie 2. *Nat. Methods* 9: 357–359. <https://doi.org/10.1038/nmeth.1923>
- Lawrence, K., M. Olsen, T. Faske, R. Hutmacher, J. Muller *et al.*, 2015 Cotton disease loss estimate committee report, 2014, pp. 188–190 in *Proceedings of the 2015 Beltwide Cotton Conferences, San Antonio, TX. Cordova: National Cotton Council*
- Li, H., B. Handsaker, A. Wysoker, T. Fennell, J. Ruan *et al.*, 2009 The Sequence Alignment/Map format and SAMtools. *Bioinformatics* 25: 2078–2079. <https://doi.org/10.1093/bioinformatics/btp352>
- Lu, Z., B. T. Hofmeister, C. Vollmers, R. M. DuBois, and R. J. Schmitz, 2017 Combining ATAC-seq with nuclei sorting for discovery of cis-regulatory regions in plant genomes. *Nucleic Acids Res.* 45: e41. <https://doi.org/10.1093/nar/gkw1179>
- Lu, Z., A. P. Marand, W. A. Ricci, C. L. Ethridge, X. Zhang *et al.*, 2019 The prevalence, evolution and chromatin signatures of plant regulatory elements. *Nat. Plants* 5: 1250–1259. <https://doi.org/10.1038/s41477-019-0548-z>
- Lyons, E., and M. Freeling, 2008 How to usefully compare homologous plant genes and chromosomes as DNA sequences. *Plant J.* 53: 661–673. <https://doi.org/10.1111/j.1365-313X.2007.03326.x>
- Mapleson, D., L. Venturini, G. Kaithakottil, and D. Swarbreck, 2018 Efficient and accurate detection of splice junctions from RNA-seq with Portcullis. *Gigascience* 7: 1–11. <https://doi.org/10.1093/gigascience/giy131>
- Marçais, G., A. L. Delcher, A. M. Phillippy, R. Coston, S. L. Salzberg *et al.*, 2018 MUMmer4: A fast and versatile genome alignment system. *PLOS Comput. Biol.* 14: e1005944. <https://doi.org/10.1371/journal.pcbi.1005944>
- Martin, G. B., A. J. Bogdanove, and G. Sessa, 2003 Understanding the functions of plant disease resistance proteins. *Annu. Rev. Plant Biol.* 54: 23–61. <https://doi.org/10.1146/annurev.arplant.54.031902.135035>
- Nacoulima, N., J. P. Baudoin, and G. Mergeai, 2012 Introgression of improved fiber fineness trait in *G. hirsutum* L. from *G. longicalyx* Hutch. & Lee. *Commun. Agric. Appl. Biol. Sci.* 77: 207–211.

- Nichols, R. L., A. Bell, D. Stelly, N. Dighe, F. Robinson *et al.*, 2010 Phenotypic and genetic evaluation of LONREN germplasm, pp. 798–799 in *Proc. Beltwide Cotton Conf. New Orleans, LA*
- Novák, P., P. Neumann, and J. Macas, 2010 Graph-based clustering and characterization of repetitive sequences in next-generation sequencing data. *BMC Bioinformatics* 11: 378. <https://doi.org/10.1186/1471-2105-11-378>
- Ou, S., J. Chen, and N. Jiang, 2018 Assessing genome assembly quality using the LTR Assembly Index (LAI). *Nucleic Acids Res.* 46: e126. <https://doi.org/10.1093/nar/gky730>
- Paterson, A. H., J. F. Wendel, H. Gundlach, H. Guo, J. Jenkins *et al.*, 2012 Repeated polyploidization of *Gossypium* genomes and the evolution of spinnable cotton fibres. *Nature* 492: 423–427. <https://doi.org/10.1038/nature11798>
- Pertea, M., G. M. Pertea, C. M. Antonescu, T.-C. Chang, J. T. Mendell *et al.*, 2015 StringTie enables improved reconstruction of a transcriptome from RNA-seq reads. *Nat. Biotechnol.* 33: 290–295. <https://doi.org/10.1038/nbt.3122>
- Phillips, L. L., 1966 The cytology and phylogenetics of the diploid species of *Gossypium*. *Am. J. Bot.* 53: 328–335. <https://doi.org/10.1002/j.1537-2197.1966.tb07343.x>
- Putnam, N. H., B. L. O'Connell, J. C. Stites, B. J. Rice, M. Blanchette *et al.*, 2016 Chromosome-scale shotgun assembly using an in vitro method for long-range linkage. *Genome Res.* 26: 342–350. <https://doi.org/10.1101/gr.193474.115>
- Quinlan, A. R., 2014 BEDTools: The Swiss-Army Tool for Genome Feature Analysis. *Curr. Protoc. Bioinformatics* 47: 11.12.1, 11.12.34. <https://doi.org/10.1002/0471250953.bi1112s47>
- Ramírez, F., D. P. Ryan, B. Grüning, V. Bhardwaj, F. Kilpert *et al.*, 2016 deepTools2: a next generation web server for deep-sequencing data analysis. *Nucleic Acids Res.* 44: W160–W165. <https://doi.org/10.1093/nar/gkw257>
- R Core Team, 2017 *R: A language and environment for statistical computing*, R Foundation for Statistical Computing, Vienna, Austria.
- R Development Core Team, R., and Others, 2011 *R: A language and environment for statistical computing*.
- Ricci, W. A., Z. Lu, L. Ji, A. P. Marand, C. L. Ethridge *et al.*, 2019 Widespread long-range cis-regulatory elements in the maize genome. *Nat. Plants* 5: 1237–1249. <https://doi.org/10.1038/s41477-019-0547-0>
- Robinson, A. F., 2007 Reniform in U.S. cotton: when, where, why, and some remedies. *Annu. Rev. Phytopathol.* 45: 263–288. <https://doi.org/10.1146/annurev.phyto.45.011107.143949>
- Robinson, A. F., R. N. Inerra, E. P. Caswell-Chen, N. Vovlas, and A. Troccoli, 1997 *Rotylenchulus* Species: Identification, Distribution, Host Ranges, and Crop Plant Resistance | *Nematropica*. *Nematropica* 27: 127–180.
- Rossi, M., F. L. Goggin, S. B. Milligan, I. Kaloshian, D. E. Ullman *et al.*, 1998 The nematode resistance gene Mi of tomato confers resistance against the potato aphid. *Proc. Natl. Acad. Sci. USA* 95: 9750–9754. <https://doi.org/10.1073/pnas.95.17.9750>
- Schliep, K. P., 2011 phangorn: phylogenetic analysis in R. *Bioinformatics* 27: 592–593. <https://doi.org/10.1093/bioinformatics/btq706>
- Smit, A. F. A., R. Hubley, and P. Green, 2015 RepeatMasker Open-4.0. 2013–2015.
- Sohani, M. M., P. M. Schenk, C. J. Schultz, and O. Schmidt, 2009 Phylogenetic and transcriptional analysis of a strictosidine synthase-like gene family in *Arabidopsis thaliana* reveals involvement in plant defence responses. *Plant Biol.* 11: 105–117. <https://doi.org/10.1111/j.1438-8677.2008.00139.x>
- Stanke, M., O. Keller, I. Gunduz, A. Hayes, S. Waack *et al.*, 2006 AUGUSTUS: ab initio prediction of alternative transcripts. *Nucleic Acids Res.* 34: W435–W439. <https://doi.org/10.1093/nar/gkl200>
- The Gene Ontology Consortium, 2019 The Gene Ontology Resource: 20 years and still GOing strong. *Nucleic Acids Res.* 47: D330–D338. <https://doi.org/10.1093/nar/gky1055>
- Udall, J. A., E. Long, C. Hanson, D. Yuan, T. Ramaraj *et al.*, 2019 De novo genome sequence assemblies of *Gossypium raimondii* and *Gossypium turneri*. *G3 (Bethesda)* 9: 3079–3085. <https://doi.org/10.1534/g3.119.400392>
- UniProt Consortium, 2008 The universal protein resource (UniProt). *Nucleic Acids Res.* 36: D190–D195.
- Venturini, L., S. Caim, G. G. Kaithakottil, D. L. Mapleson, and D. Swarbreck, 2018 Leveraging multiple transcriptome assembly methods for improved gene structure annotation. *Gigascience* 7: 1–12. <https://doi.org/10.1093/gigascience/giy093>
- Wang, J., J. Zhuang, S. Iyer, X. Lin, T. W. Whitfield *et al.*, 2012 Sequence features and chromatin structure around the genomic regions bound by 119 human transcription factors. *Genome Res.* 22: 1798–1812. <https://doi.org/10.1101/gr.139105.112>
- Waterhouse, R. M., M. Seppey, F. A. Simão, M. Manni, P. Ioannidis *et al.*, 2018 BUSCO applications from quality assessments to gene prediction and phylogenomics. *Mol. Biol. Evol.* 35: 543–548. <https://doi.org/10.1093/molbev/msx319>
- Wendel, J. F., and V. A. Albert, 1992 Phylogenetics of the Cotton Genus (*Gossypium*): Character-State Weighted Parsimony Analysis of Chloroplast-DNA Restriction Site Data and Its Systematic and Biogeographic Implications. *Syst. Bot.* 17: 115–143. <https://doi.org/10.2307/2419069>
- Wendel, J. F., and C. E. Grover, 2015 Taxonomy and Evolution of the Cotton Genus, *Gossypium*, pp. 25–44 in *Cotton*. Agronomy Monograph, American Society of Agronomy, Inc., Crop Science Society of America, Inc., and Soil Science Society of America, Inc., Madison, WI.
- Wickham, H., 2016 *ggplot2: Elegant Graphics for Data Analysis*. Springer-Verlag New York.
- Wickham, H., R. Francois, L. Henry, K. Müller, and Others, 2015 dplyr: A grammar of data manipulation. R package version 0. 4. 3:.
- Wu, T. D., and C. K. Watanabe, 2005 GMAP: a genomic mapping and alignment program for mRNA and EST sequences. *Bioinformatics* 21: 1859–1875. <https://doi.org/10.1093/bioinformatics/bti310>
- Yandell, M., and D. Ence, 2012 A beginner's guide to eukaryotic genome annotation. *Nat. Rev. Genet.* 13: 329–342. <https://doi.org/10.1038/nrg3174>
- Yik, C. P., and W. Birchfield, 1984 Resistant Germplasm in *Gossypium* Species and Related Plants to *Rotylenchulus reniformis*. *J. Nematol.* 16: 146–153.
- Yu, J., S. Jung, C.-H. Cheng, S. P. Ficklin, T. Lee *et al.*, 2014 CottonGen: a genomics, genetics and breeding database for cotton research. *Nucleic Acids Res.* 42: D1229–D1236. <https://doi.org/10.1093/nar/gkt1064>
- Yu, G., L.-G. Wang, and Q.-Y. He, 2015 ChIPseeker: an R/Bioconductor package for ChIP peak annotation, comparison and visualization. *Bioinformatics* 31: 2382–2383. <https://doi.org/10.1093/bioinformatics/btv145>
- Zhang, Y., T. Liu, C. A. Meyer, J. Eeckhoutte, D. S. Johnson *et al.*, 2008 Model-based analysis of ChIP-Seq (MACS). *Genome Biol.* 9: R137. <https://doi.org/10.1186/gb-2008-9-9-r137>
- Zheng, X., K. A. Hoegenauer, J. Quintana, A. A. Bell, A. M. Hulse-Kemp *et al.*, 2016 SNP-Based MAS in cotton under depressed-recombination for Renlon-flanking recombinants: results and inferences on wide-cross breeding strategies. *Crop Sci.* 56: 1526–1539. <https://doi.org/10.2135/cropsci2015.07.0436>

Communicating editor: E. Akhunov