

# BMJ Open Effects of a multicomponent workplace intervention programme with environmental changes on physical activity among Japanese white collar employees: a protocol for a cluster randomised controlled trial

Kazuhiro Watanabe,<sup>1,2</sup> Norito Kawakami<sup>1</sup>

**To cite:** Watanabe K, Kawakami N. Effects of a multicomponent workplace intervention programme with environmental changes on physical activity among Japanese white collar employees: a protocol for a cluster randomised controlled trial. *BMJ Open* 2017;7:e017688. doi:10.1136/bmjopen-2017-017688

► Prepublication history and additional material for this paper are available online. To view these files, please visit the journal online (<http://dx.doi.org/10.1136/bmjopen-2017-017688>).

Received 10 May 2017

Revised 27 July 2017

Accepted 4 September 2017



CrossMark

<sup>1</sup>Department of Mental Health, Graduate School of Medicine, The University of Tokyo, Tokyo, Japan

<sup>2</sup>The Japan Society for the Promotion of Science, Tokyo, Japan

## Correspondence to

Kazuhiro Watanabe;  
kzwatanabe-tky@umin.ac.jp

## ABSTRACT

**Introduction** Physical activity is one of the most important health behaviours as a determinant of physical and mental health. Although intervention strategies for promoting physical activity among workers are needed, evidence for the effectiveness of multilevel workplace interventions with environmental changes on the promotion of physical activity are still limited due to lack of cluster randomised controlled trials (RCTs). The aim of this study is to investigate effects of a 3-month workplace intervention programme with environmental changes on the improvement in physical activity among Japanese white collar employees.

**Methods and analysis** This study will be a two-arm and parallel-group cluster (worksites) RCT. Japanese worksites and employees who are employed by the worksites will be recruited through health insurance associations and chambers of commerce. Worksites that meet the inclusion criteria will be randomly allocated to intervention or control groups. The intervention worksites will be offered the original intervention programme that consists of 13 contents with environmental changes. The control worksites will be able to get three times feedback of the assessment of the amount of physical activity and basic occupational health service in each worksite. The primary outcome will be the total amount of physical activity measured by the Global Physical Activity Questionnaire at baseline, 3 months and 6 months. Multilevel latent growth modelling will be conducted to examine the effectiveness of the intervention programme.

**Ethics and dissemination** This study was ethically approved by the research ethics committee of the Graduate School of Medicine and Faculty of Medicine, The University of Tokyo, Japan (No. 11230). Results will be submitted and published in a scientific peer-reviewed journal.

**Trial registration number** UMIN000024069; Pre-results.

## INTRODUCTION

Physical activity is one of the most important health behaviours as a determinant of

## Strengths and limitations of this study

- This study will be the first cluster randomised controlled trial of the multicomponent workplace intervention programme with environmental changes among white collar employees, including the majority of the worksites in Japan, which are small-sized worksites.
- The findings will be generalisable because of the validated scale used for the standard operational definitions.
- The study will also be the first to investigate the effects of a multicomponent workplace intervention both on physical activity and psychological distress.
- The shortage of our human and monetary resources could be a limitation causing selection bias and impacting small sample size and high attrition rates.
- Another limitation is that all measurements (eg, physical activity, psychological distress) are self-reported, causing potential measurement errors and informational bias.

physical and mental health.<sup>1</sup> Promotion of physical activity is effective in reducing risks for coronary heart disease, type 2 diabetes, cancers and all-cause mortality.<sup>2–4</sup> In addition, physical activity is effective for prevention and treatment of depression, anxiety and improvement of health-related quality of life.<sup>5–8</sup> The benefits of promoting physical activity among the working population have also been demonstrated.<sup>9,10</sup> Moreover, although the evidence is still limited, significant associations between physical activity and improved work-related outcomes have been reported.<sup>11–13</sup> However, despite the importance in promoting physical activity, levels of physical activity in the population are usually low.<sup>14</sup> Modern changes in working styles, including technological advances, have

resulted in a large increase in workers engaged in sedentary occupations.<sup>15</sup> Intervention strategies for promoting physical activity among workers are therefore needed.

Many systematic reviews have already been conducted for workplace intervention strategies to promote physical activity.<sup>16–27</sup> Recently, Schröder *et al*<sup>18</sup> conducted a metareview of workplace health interventions for promoting healthy lifestyles and concluded that physical activity among employees was increased by multicomponent interventions. Some other systematic reviews suggested a similar strategy.<sup>19–21</sup> Multicomponent interventions typically include both individual and environmental modifications, such as education,<sup>21 22</sup> cognitive-behavioural and motivational approaches,<sup>22</sup> counselling,<sup>21 23</sup> involvement of families in interventions,<sup>19</sup> provision of informational messages,<sup>24</sup> using signs for stair-use<sup>19 20 25 26</sup> active commuting,<sup>18</sup> implementing new policies encouraging physical activity,<sup>21 27</sup> employer incentives<sup>24</sup> and provision of facilities and equipment for physical activity.<sup>19–21 24</sup> An ecological model<sup>28</sup> is also proposed to describe that various multilevel factors such as intrapersonal, interpersonal, organisational, community and public policy-level factors, could influence specific health behaviours interactively, across different levels and domains. The model also implies that multilevel interventions may be effective in changing behaviour.

However, the quality of evidence for the effectiveness of a multilevel workplace intervention for the promotion of physical activity is still limited. Most studies that have investigated the effects of a stair-use intervention used time-series study designs.<sup>25 26</sup> Very few randomised controlled trials (RCTs) have been used to determine the effects of other components with environmental changes.<sup>21 27–31</sup> It was concluded that there was limited and low quality data for the evidence; thus, studies with more rigorous research designs are needed. However, conducting RCTs in a workplace is difficult because of employees' resistance to randomisation and potential contamination.<sup>17</sup> In addition, because environmental modifications are conducted at worksite- or company level, randomisation at the individual level in a worksite cannot detect the effects of the workplace environment. Therefore, cluster RCTs (cRCTs) are needed to implement programme interventions using multilevel designs.

A systematic search was conducted to review previous cRCTs meeting the following criteria: participants were worksites and workers employed by a company/organisation; intervention programmes included multiple components (two or more components) with environmental changes (programmes, organisational policies and practice promoting internal physical environment, internal social environment and external physical and social environments<sup>32</sup>) at the workplace; outcomes were individual-level physical activity; randomisation was conducted at the worksite or company level. We identified four cRCTs<sup>33–36</sup> meeting our inclusion criteria; three studies<sup>33–35</sup> were conducted in the USA and one<sup>36</sup> in the UK. These studies had high quality of evidence;

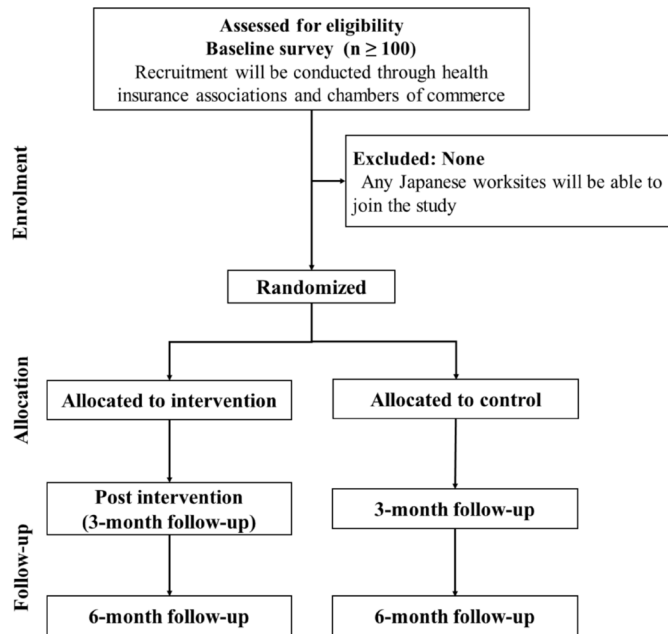
however, they had inconsistent results: two studies<sup>33 34</sup> reported significant effects resulting from the promotion of physical activity while the others<sup>35 36</sup> reported insignificant effects. In addition, operational definitions of the components of the workplace environment investigated were also different and poor. As only one study<sup>34</sup> quantitatively assessed workplace environment with the cRCT, the specific factors of workplace environment that influenced the behavioural changes among employees could not be detected. Furthermore, these studies targeted only a few companies and restricted areas. Participating worksites were predominantly large and had many resources to support employees' healthy behaviours. However, 96.7% of worksites in Japan are small ( $\leq 50$  employees).<sup>37</sup> Further cRCTs are needed to produce more clear evidence and to be able to generalise the effectiveness of workplace interventions with environmental changes on the promotion of physical activity, including small-sized worksites.

## Objectives

In this study, we aim to investigate the effects of a 3-month multilevel workplace intervention programme on improving the total amount of physical activity among Japanese white collar employees. The workplace environments that we will target will be operationally defined using scores from a validated scale,<sup>38 39</sup> measuring programmes, organisational policies and practice promoting internal environments to promote physical activity.<sup>32</sup> The findings will be generalisable because future intervention programme will be developed according to the same scale. Additionally, since we will include large-sized and small-sized worksites as participants, findings from this study will be useful in informing all employers, occupational health staff members and researchers. We will also examine the effects of the programme on enhancing self-regulation for physical activity as a psychological determinant for physical activity<sup>40–42</sup> and improving psychological distress and subjective health status as secondary health outcomes. We hypothesise that physical activity among employees, self-regulation for physical activity, psychological distress and subjective health will be significantly improved in intervention worksites when compared with the control worksites.

## Trial design

This study will be a two-arm, parallel-group cRCT. The randomisation procedure will be conducted at the cluster (worksite) level. The worksites will be randomly assigned to an intervention or a control (treatment as usual (TAU)) group; after completion of a baseline survey worksites will be randomised using a 1:1 ratio. The randomisation will be conducted stratified by worksite size ( $\leq 49$ , 50–299, and  $\geq 300$  employees); permuted-blocked (blocked size=2); non-blinded. Measurements will be collected at the worksite and worker level, and analysis for evaluating the efficacy of the intervention programme will be conducted at the worker level taking into consideration the cluster (worksite) level effects. The study



**Figure 1** Participant flow chat.

protocol was registered at the University Hospital Medical Information Network (UMIN) Clinical Trials Registry (UMIN-CTR, ID=UMIN000024069). This protocol was reported according to the SPIRIT guidelines.<sup>43</sup>

## METHODS AND ANALYSIS

### Participants

This cRCT will include multilevel participants: worksites and employees who are employed by the worksites. As the intervention programme will include environmental modifications at the workplace, the cluster level is each worksite. There will be no inclusion and exclusion criteria for worksites; any Japanese worksites will be able to participate in the study if they are interested in the promotion of physical activity. Employees will be considered for inclusion in this study if they are: workers employed by the included worksites; workers who are 18 years of age or older; white collar workers (managerial, professional, technical, clerical and other job types which require desk work or sitting work). There will be no exclusion criteria for participants enrolled in this study.

### Procedure

**Figure 1** shows a participant flow chart for this study. We will recruit more than a hundred worksites in the Kanto area through some of the health insurance associations and chambers of commerce in the area, using snowball sampling methods. The corresponding author (KW) will send invitations to these organisations, asking them to participate in the recruitment of the worksites. If they agree to assist, the corresponding author will also provide an explanation asking each worksite to participate in the study. In our previous study conducted using the same sampling methods in Kanto area, approximately half of the worksites agreed to participate in the study.<sup>44</sup> Therefore,

this study is expected to recruit 50 or more worksites. After the worksite representatives' agree to partake in the study, nested employees will be recruited. An average cluster size will be approximately 20 employees. In this study, coordinators in each worksite will be appointed with whom we will discuss sampling methods for the workers. Some worksites will recruit workers randomly, some will recruit workers using flyers and the others will recruit workers in one of the departments. As the response rate of workers was 87.8% in our previous study, about 878 workers are expected to agree and participate in the study.<sup>44</sup> After the worksites and employees complete the baseline survey, the worksites will be allocated randomly to the intervention or control group. The intervention programme with environmental changes will last 3 months. The postsurveys immediately after the completion of the intervention (3-month follow-up) and 6-month follow-up surveys will be conducted in both the intervention and control groups.

### Intervention programme

We developed an original intervention programme that consists of multicomponent environmental changes based on a validated scale (the Environmental Assessment Tool (EAT)),<sup>38,39</sup> good practices to promote physical activity among Japanese worksites and a literature review. **Table 1** shows contents of the intervention programme. The EAT, used to define the workplace environment to promote physical activity in this study, was tested both in the USA and Japan, where its reliability and validity were confirmed.<sup>38,45</sup> Higher scores on the EAT indicate a more supportive environment for physical activity promotion and a more invested environment by employers.<sup>39</sup> The EAT consists of three subordinate scales.<sup>38</sup> Of these, variables for Physical Activity Assessment and Organisational Characteristics and Support can be determined and measured for promoting physical activity among employees. We referred eight items in the two subordinate scales to develop the intervention programme: parking/bike, signs/bulletin boards/advertisements, shower/changing facilities, stairs/elevators, physical activity/fitness facilities, work rules, written policies and health promotion programmes for physical activity and weight management. Additionally, we conducted qualitative interviews for Japanese worksites in the Kanto area to learn about good practices with environmental changes already being conducted to promote physical activity. From the results, the 13 elements based on 7 items of the EAT (**table 1**) were considered feasible to conduct at Japanese workplaces. Each operational definition of the environmental change was defined by the EAT scoring system. Finally, literature reviews were conducted to investigate rationales and functions of each item to promote physical activity among workers. Three possible functions for the items were ascertained from the literature<sup>24,27,46</sup>: building awareness and social norms around physical activity, enhancing accessibility for physical activity and enhancing individual cognitive-behavioural skills. As

**Table 1** Elements of the intervention programme with environmental changes

No	Elements	Japanese EAT variables <sup>38</sup>	Operational definitions	Functions
1	Policy-making and declaration	Written policies	Whether the worksite has a written policy statement supporting employee physical fitness and the policy is posted or otherwise communicated to employees	Employer policy support Building awareness and social norms
2	Posters detailing the programme contents and recommendations for physical activity	Signs/bulletin boards/advertisements	How many posters are displayed at the worksite	Informational messages Building awareness and social norms
3	Notifications provided on intrawebsite/electronic bulletin board systems	Signs/bulletin boards/advertisements	Whether the worksite inform the programme contents via an intrawebsite and/or an electronic bulletin board system	Informational messages Building awareness and social norms
4	Prompts for stair use at stairs and elevators	Stairs/elevator	Whether any prompt for stair use is displayed at stairs or elevators	Informational messages Building awareness and social norms
5	Exercise	Health promotion programmes: physical activity	Whether any exercise programme is provided before office hours, at lunch time or after office hours	Enhancing accessibility for physical activity
6	Individual competition of physical activity within the worksite	Health promotion programmes: physical activity	Whether any competition programme is provided by employers	Employer incentives Support for self-regulation Enhancing accessibility for physical activity
7	Psychological education to increase self-regulation for physical activity	Health promotion programmes: physical activity	Whether any education programme is provided that help employees enhance self-regulative strategies for physical activity	Behavioural-cognitive approach Increasing self-regulation for physical activity
8	Subsidisation of a membership to offsite exercise facilities	Physical activity/fitness facilities	Whether membership at offsite exercise facilities is subsidised by employers	Enhancing accessibility for physical activity
9	Providing onsite fitness facilities	Physical activity/fitness facilities	Whether any aerobic and strength equipment are provided at the workplace and whether four stations per 500 employees are provided at the worksite	Enhancing accessibility for physical activity
10	Providing bike rack spaces	Parking/bike	Whether any bike rack space is provided at the worksite	Enhancing accessibility for physical activity
11	Providing changing facilities	Shower/changing facilities	Whether any changing facility is provided at the worksite	Enhancing accessibility for physical activity
12	Providing shower facilities	Shower/changing facilities	Whether any shower facility is provided at the worksite	Enhancing accessibility for physical activity
13	Contract for sponsorship with sports teams	Physical activity/fitness facilities	Whether employers contract any sponsorship with any sports team	Employer support Building awareness and social norms

EAT, Environmental Assessment Tool.

our resources are limited, only seven elements (Nos 1–7, [table 1](#)) will be offered free of charge to the participating worksites. The other six elements (Nos 8–13) will be optional, offered with cofunding or no funding from the research team. If the worksite is not feasible for conducting the specific items, only feasible contents will be conducted. For instance, prompts for stair use (No 4) cannot be enacted if the worksite is located in a single-storied building. Taking these conditions into account, we will discuss with the coordinators which and how many elements can be feasibly conducted at each worksite. Here, details of the seven elements that will be offered in free are described.

### Intervention programme elements

#### Policy-making and declaration

The effects of employers or worksite representatives making and declaring policy to encourage employees to be physically active have been discussed in previous studies.<sup>19 21 27</sup> Policies can be attractive for building awareness and social norms among employees. In this study, details of the recommended policies will be discussed by the research team and the coordinator and endorsed by the worksite representatives in each worksite. We will determine if the worksite has a written policy, and whether the policy has been posted or communicated to employees.

#### Posters detailing the programme contents and recommendations for physical activity

The incorporation of informational messages in health interventions are also considered effective for building awareness and social norms.<sup>24</sup> In this study, two kinds of posters will be attached at three or more locations within worksites: information about the intervention programme contents and recommendations for participating in the programme and being physically active. We will determine the number of posters distributed in each workplace; more posters will be considered more effective.

#### Notification provided on intrawebsite/electronic bulletin board systems

In addition to the use of posters, notifications regarding the programme contents and recommendations for physical activity will also be conducted on an intrawebsite or a bulletin board system. Based on the results of the assessment investigating good practices among Japanese worksites, we determined that most of the worksites had their own electronic systems to share confidential information within worksites; however, they did not use them for physical activity promotion. We will measure whether the worksite offers information via these electronic systems.

#### Prompts for stair use at stairs and elevators

The effect of using signs for stair use<sup>19 20 25 26</sup> for promoting physical activity has repeatedly been suggested on the literature as well. In addition, the qualitative interviews

revealed that some Japanese worksites already took it into the good practice. This intervention programme will also include the prompts for stair use to build awareness and social norms. We will determine whether any prompt for stair use is displayed at stairs or elevators.

#### Exercise

Health promotion programmes at the workplace enhance the accessibility for physical activity among employees.<sup>24 46</sup> Based on the EAT, we determined whether or not any exercise programme was provided outside of working hours. No criterion is set for duration, frequency and intensity of exercise. In this study, we will use the ‘radio physical fitness exercise’<sup>47</sup> as a standard exercise programme. It is the most popular exercise programme in Japan and most of Japanese people can use this to work out without instruction. Any other exercise programmes will be accepted based on discussion between the research team and the coordinators.

#### Individual competition of physical activity within the worksite

There will be a special programme held during the intervention period (3 months) during which participating employees will track their physical activity completed. Such programmes can be effective in enhancing accessibility for physical activity and for increasing self-monitoring by providing the actual opportunity for individuals to trace their own activity.<sup>48</sup> A website was newly developed by the corresponding author, which is password locked and includes an individual self-monitoring system. A password to access the website will be shared only among the employees in the intervention worksites. They will be able to log in their individual page after creating accounts and to record the self-reported duration of physical activity per day in three strata: work related, transport related and leisure time. The recorded data can be checked at any time by both the individuals and the research team during the study. Those who completed more physical activity (ranked by the total amount of physical activity during the intervention programme) will get prizes sponsored by the employers; the worksites will discuss the winners and the prizes. We will measure whether or not employers held physical activity competitions.

#### Psychological education to increase self-regulation for physical activity

Self-regulation (goal setting, reinforcement, self-monitoring, corrective self-reaction, performance self-guidance and preparation for individual outcome expectations)<sup>40</sup> has recently been indicated as a psychological determinant most strongly associated with physical activity.<sup>41</sup> In this study, a 60 min single education seminar was developed to enhance self-regulation for physical activity, which consists of goal-setting and self-monitoring. The seminar will be held in a group-based style, and the participating employees will be instructed to gradually increase their time spent on physical activity by more than 10 min daily. Employees will be instructed to record their physical

activity using digital devices (eg, smart watches, smartphones and the website used during this study). During the seminar, employees will also discuss the importance of remaining physically active despite high workloads. We will measure whether or not any psychological education is provided by the worksites, including components to enhance self-regulative strategies for physical activity among employees.

### Intervention worksites

Worksites in the intervention group will be offered the intervention programme described above for 3 months. At the starting stage of the intervention, policies will be implemented and informational messages will be provided to employees (Nos 1–4). The individual competition programme (No 6) and the optional elements for facilitations (Nos 8–13) will also be started. The exercise programme (No 5) and the psychological education (No 7) will also be conducted in each worksite. In addition to the intervention programme, three-time feedback (baseline, 3-month and 6-month follow-up surveys) of the assessment of the amount of physical activity and basic occupational health service in each worksite will be offered as the TAU.

### Control worksites

Worksites in the control group will be offered the three-time feedback and basic occupational health service as the TAU. Worksites and employees enrolled in the control group will be put on a waiting list to receive the same intervention programme with the intervention worksites after completing the 6-month follow-up survey.

### Outcomes

All outcomes, including the primary and secondary outcomes (self-regulation for physical activity, psychological distress and subjective health) will be measured at the baseline survey and at the 3-month and 6-month follow-up surveys (table 2).

### Physical activity

Physical activity will be measured using the Japanese version of Global Physical Activity Questionnaire (GPAQ V.2).<sup>49</sup> This scale is widely used and has demonstrated reliability and convergent validity among nine countries, including Japan.<sup>50</sup> The GPAQ can assess three domain-specific physical activities in moderate-to-vigorous intensity

per week in fewer items than previous questionnaires (the International Physical Activity Questionnaire, IPAQ)<sup>51 52</sup>: occupational; transportation and leisure time and sitting time in a day. Although the GPAQ were developed as a tool for population surveillance across the world at first, it has also been used for assessment of the outcomes of intervention studies.<sup>53 54</sup> In this study, we adopted the GPAQ because of its easiness and low cost to answer, while its criterion validity with pedometers and accelerometers was poor–fair.<sup>50</sup> There will be certain limitation for overestimation of physical activity when compared with pedometers and accelerometers.<sup>50 55</sup> Metabolic equivalents (METs) will be used as a unit of physical activity intensity. We will calculate the total amount of physical activity per week (METs—hours/week), according to the GPAQ analysis guide.<sup>56</sup> We will assume that physical activity is promoted for employees with higher levels of physical activity.

### Self-regulation for physical activity

Self-regulation for physical activity will be measured using the Japanese version of the 12-item Physical Activity Self-Regulation scale (PASR-12).<sup>57 58</sup> The internal consistency, convergent validity and structural validity of the Japanese version of the PASR-12 have been confirmed in a previous study.<sup>58</sup> The PASR-12 asks the workers how frequently they used cognitive and behavioural methods for physical activity in the past 4 weeks (eg, ‘I mentally kept track of my physical activity’). The PASR-12 consists of 12 items and 6 factors: self-monitoring; goal setting; eliciting social support; reinforcements; time management and relapse prevention. All items are rated on a five-point Likert scale (1=never to 5=very often). We will calculate individual 6-factor scores and total PASR-12 scores.

### Psychological distress

Questions from the Brief Job Stress Questionnaire<sup>59</sup> will be used to measure psychological distress at work in terms of vigour (three items, eg, ‘I have been very active’), irritation (three items, eg, ‘I have felt angry’), fatigue (three items, eg, ‘I have felt extremely tired’), anxiety (three items, eg, ‘I have felt tense’) and depression (six items, eg, ‘I have felt depressed’). This scale has been widely used to assess responses to stress in Japan and has demonstrated reliability and validity.<sup>60 61</sup> All items are rated on a four-point Likert scale (1=hardly to

**Table 2** Outcome measures

Measurement	Aim	Baseline	3-month follow-up	6-month follow-up
<b>Primary outcome</b>				
GPAQ V.2	The amount of physical activity	x	x	x
<b>Secondary outcomes</b>				
PASR-12	Self-regulative strategies for physical activity	x	x	x
BJSQ	Severity of psychological distress	x	x	x
Subjective health	Overall subjective health status	x	x	x

BJSQ, Brief Job Stress Questionnaire; GPAQ, Global Physical Activity Questionnaire; PASR, Physical Activity Self-Regulation.

4=almost). In this study, we will calculate each factor and total scores. As vigour measures a positive aspect of psychological distress, vigour scores will be reverse coded in calculating the total scores; higher scores indicate higher psychological distress.

### Subjective health

Overall subjective health status will be measured using one question ‘Overall, how good is your health?’ rated on seven-point Likert scale (1=not very good to 7=very good). Higher scores indicate better subjective health status.

### Sample size calculation

The required sample size was calculated according to the guidelines in the Consolidated Standards of Reporting Trials (CONSORT) for cluster RCTs,<sup>62</sup> taking into account intraclass correlations (ICC) of the outcomes nested by the worksites (table 3). Sample sizes in cRCTs should be multiplied by design effect ( $1+[m-1]\rho$ ), where  $m$  is the average cluster size and  $\rho$  is ICC.<sup>63</sup> In our previous study,<sup>38</sup> ICC for physical activity among Japanese employees was 0.009. In another study<sup>64</sup> 1.1% in the variance of leisure time physical activity was found in working groups among employees. Therefore, the estimated ICC for the primary outcome in this study was set to 0.01 and cluster size was set to 20<sup>65</sup>. An effect size of the intervention programme for individual physical activity was estimated based on a previous meta-analysis<sup>17</sup> and an cRCT.<sup>34</sup> The former meta-analysis concluded standardised mean difference (d) of workplace interventions on physical activity was 0.21. Cohen’s d of the cRCT was calculated using the reported descriptive statistics and the standardised Cohen’s d for vigorous and moderate physical activity was 0.24. The required sample size ranges between 436 and 569 employees in each arm; thus, from 22 to 29 worksites they should be recruited in the case of alpha error probability of 0.05 and a power (1- $\beta$ ) of 0.90, using G\*Power V.3.1.9.2 (table 3).<sup>66 67</sup>

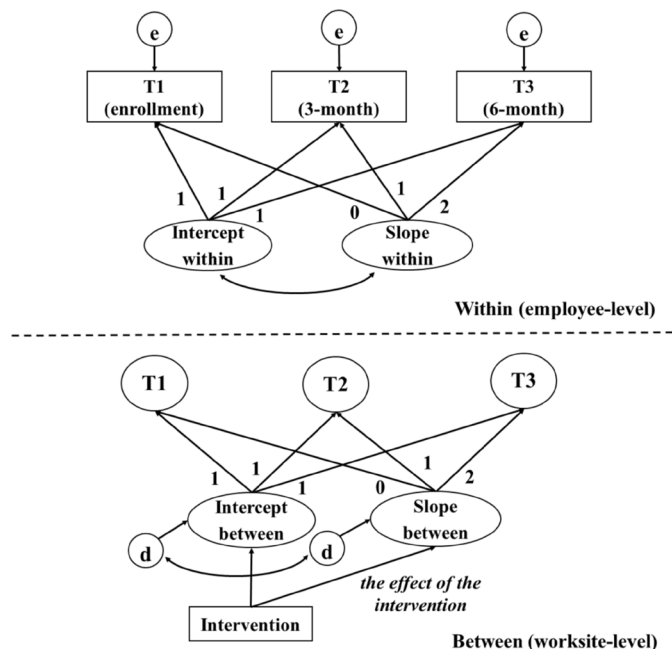
### Randomisation

Enrolled worksites which meet the inclusion criteria will be randomised to intervention or control groups. The randomisation will be stratified into three strata based on worksite size ( $\leq 49$ , 50–299 and  $\geq 300$  employees) because the intervention effect might be different based on this factor; it has been proven that it is easier for large worksites to facilitate health and welfare systems.<sup>38</sup> Permuted-blocked randomisation (blocked size=2) will be adopted for equal randomisation. Because each employee who participate in the study will not be notified of the result of the randomisation, assessment of the amount of physical activity (self-reported) will be blinded. On the other hand, the coordinators in the participating worksites will be notified of the result of the randomisation. Data analysis conducted by the corresponding author (KW) will also be open to blinded. A stratified permuted block random table will be created by an independent biostatistician. This table will be managed

**Table 3** Sample size calculation for the cluster RCT

Article	Mean change between groups	SD	Effect size (d)	Required sample size (each arm)*	Design effect	Required sample size for cluster RCT (each arm)	Required number of worksites (each arm)
Conn <i>et al</i> <sup>17</sup>	–	–	0.21	478	1.19	568.82	28.4
Dishman <i>et al</i> <sup>34</sup>							
Vigorous physical activity	6.0	25.0	0.24	366	1.19	435.54	21.8
Moderate physical activity	3.3	13.9	0.24	366	1.19	435.54	21.8

\* $\alpha=0.05$ , (1- $\beta$ )=0.90, allocation ratio=1:1. RCT, randomised controlled trial.



**Figure 2** Latent growth modelling for the study. T1, enrollment; T2, 3-month follow up; T3, 6-month follow-up.

by another research assistant and will be blinded to the researchers (KW and NK).

### Statistical analysis

Multilevel latent growth modelling (LGM)<sup>34 68</sup> using robust maximum likelihood estimation will be conducted as the main analysis to examine the effects of the intervention programme on the promotion of physical activity among white collar employees (figure 2). In this study, we will determine three levels of information: repeated measures for employees at level 1, physical activity within employees at level 2 and workplace environment within worksites at level 3. However, because estimation for the total amount of physical activity at baseline and changes of physical activity can be accounted for in latent variables in LGM, the number of hierarchical levels will be 1 less than the number of hierarchical levels in other multilevel modelling approach.<sup>68</sup> We will investigate the significance of the coefficient from a dummy variable for the intervention (control=0, intervention=1) compared with the linear slope of physical activity as the effect of the intervention programme. We will reference some model fit indices, such as  $\chi^2$ , comparative fit index (CFI), Tucker-Lewis index (TLI) and root mean square error of approximation (RMSEA). We will consider that the model demonstrates good fit if CFI and TLI exceed 0.95 and RMSEA is less than 0.06.<sup>69</sup> Intention-to-treat analysis using full information maximum likelihood estimation will be conducted, including all employees who complete the baseline survey. When results of LGM are mis-specification or improper solutions, we will consider conducting three-level mixed model analysis using the restricted maximum likelihood estimation. Mplus V.7.4<sup>70</sup> for LGM and the PASW statistics V.18 (IBM SPSS software) for

mixed model analysis will be used. Analyses for secondary outcomes (self-regulation for physical activity, psychological distress and subjective health) will also be conducted using the same methods.

Potential subgroup analyses will be conducted, stratified by worksite size, age, gender, job categories (eg, manufacture, services, construction, transportation) and initial levels of physical activity or self-regulation for physical activity.

Some mediation analyses will also be conducted using multilevel structural equation modelling. We will model (1) the intervention dummy variable for physical activity, mediated by self-regulation for physical activity and (2) the intervention dummy variable for psychological distress and subjective health, mediated by physical activity.

### Data monitoring

A data monitoring committee (DMC) will be set up, consisting of the corresponding author (KW) and the coordinator in each worksite because human resources are limited. The DMC will be held every 3 months following the randomisation in each worksite. The purpose of the meetings will be to review the participation rates and reasons for study dropout. The DMC will be independent from any sponsor and competing interest.

### Ethics and dissemination

#### Ethical considerations

This study protocol was ethically approved by the research ethics committee of the Graduate School of Medicine and Faculty of Medicine at The University of Tokyo, Japan (No 11230). We will obtain informed consent from all representatives of the worksites and all employees (see online supplementary appendix 1 and 2). The consent form will inform the worksites and employees that we guarantee protection of personal information, and that the data will be anonymous and only used for academic purposes. The surveyed data will be saved on a password-protected digital device (USB memory stick). The device will be stored in a research room at the Department of Mental Health in the Graduate School of Medicine at The University of Tokyo. The data will be stored as anonymous. Only the authors will have access to the final dataset. There is no competing interest. This work is supported by the Grant-in-Aid for the Japan Society for the Promotion of Science Fellows (15J04085).

#### Dissemination of research findings

Results and findings will be submitted and published in a scientific peer-reviewed journal according to the guidelines in the CONSORT for cluster RCTs.<sup>62</sup> Participants will be informed of conference presentations and publications.

#### Strengths and limitations

To the best of our knowledge, this study will be the first cRCT of a multicomponent workplace intervention programme with environmental changes among Japanese white collar employees. The study will include



the majority of the worksites in Japan, including small-sized worksites. In addition, operational definitions and components of the intervention programme are developed based on a validated scale. The findings will be generalisable because future intervention programmes will be developed according to the same scale. The study will also be the first to investigate the effects of a multi-component workplace intervention both on physical activity and psychological distress.

This study is subject to several limitations. All measurements are self-reported; therefore, there will likely be measurement errors and information bias. Especially, the assessment of the amount of physical activity can be overestimated. This bias can also be applicable for conducting the specific element among the intervention programme (No 6, individual competition). Additionally, since there is a shortage in our human and monetary resources, we will not be able to recruit worksites from large areas within Japan. Sampling method will not be at random for both the worksite and the employee level, possibly causing a selection bias. Furthermore, we will not be able to offer all of our interventions for free, potentially limiting the impact of our proposed interventions. Other possible limitations will be small sample sizes and high attrition rates.

**Contributors** KW and NK have made substantial contributions to the conception and design, writing of and revision of the protocol for important intellectual content and approving the final version of the protocol to be published. All authors will be involved in all of the study process (ie, recruitment, assessment, intervention and analysis).

**Funding** This work is supported by the Grant-in-Aid for the Japan Society for the Promotion of Science Fellows (15J04085).

**Competing interests** None declared.

**Patient consent** Obtained.

**Ethics approval** The research ethics committee of the Graduate School of Medicine and Faculty of Medicine at The University of Tokyo, Japan.

**Provenance and peer review** Not commissioned; externally peer reviewed.

**Open Access** This is an Open Access article distributed in accordance with the Creative Commons Attribution Non Commercial (CC BY-NC 4.0) license, which permits others to distribute, remix, adapt, build upon this work non-commercially, and license their derivative works on different terms, provided the original work is properly cited and the use is non-commercial. See: <http://creativecommons.org/licenses/by-nc/4.0/>

© Article author(s) or their employer(s) unless otherwise stated in the text of the article) 2017. All rights reserved. No commercial use is permitted unless otherwise expressly granted.

## REFERENCES

- World Health Organization. Global Health Risks: Mortality and Burden of Disease Attribute to Selected Major Risks. 2009. [http://www.who.int/healthinfo/global\\_burden\\_disease/GlobalHealthRisks\\_report\\_full.pdf](http://www.who.int/healthinfo/global_burden_disease/GlobalHealthRisks_report_full.pdf)
- Lee IM, Shiroma EJ, Lobelo F, et al. Effect of physical inactivity on major non-communicable diseases worldwide: an analysis of burden of disease and life expectancy. *Lancet* 2012;380:219–29.
- Sattelmair J, Pertman J, Ding EL, et al. Dose response between physical activity and risk of coronary heart disease: a meta-analysis. *Circulation* 2011;124:789–95.
- Woodcock J, Franco OH, Orsini N, et al. Non-vigorous physical activity and all-cause mortality: systematic review and meta-analysis of cohort studies. *Int J Epidemiol* 2011;40:121–38.
- Bize R, Johnson JA, Plotnikoff RC. Physical activity level and health-related quality of life in the general adult population: a systematic review. *Prev Med* 2007;45:401–15.
- Josefsson T, Lindwall M, Archer T. Physical exercise intervention in depressive disorders: meta-analysis and systematic review. *Scand J Med Sci Sports* 2014;24:259–72.
- Mammen G, Faulkner G. Physical activity and the prevention of depression: a systematic review of prospective studies. *Am J Prev Med* 2013;45:649–57.
- Rebar AL, Stanton R, Geard D, et al. A meta-meta-analysis of the effect of physical activity on depression and anxiety in non-clinical adult populations. *Health Psychol Rev* 2015;9:366–78.
- Chu AH, Koh D, Moy FM, et al. Do workplace physical activity interventions improve mental health outcomes? *Occup Med* 2014;64:235–45.
- Joyce S, Modini M, Christensen H, et al. Workplace interventions for common mental disorders: a systematic meta-review. *Psychol Med* 2016;46:683–97.
- Brown HE, Gilson ND, Burton NW, et al. Does physical activity impact on presenteeism and other indicators of workplace well-being? *Sports Med* 2011;41:249–62.
- Proper KI, Staal BJ, Hildebrandt VH, et al. Effectiveness of physical activity programs at worksites with respect to work-related outcomes. *Scand J Work Environ Health* 2002;28:75–84.
- van den Berg TI, Elders LA, de Zwart BC, et al. The effects of work-related and individual factors on the Work Ability Index: a systematic review. *Occup Environ Med* 2009;66:211–20.
- Hallal PC, Andersen LB, Bull FC, et al. Global physical activity levels: surveillance progress, pitfalls, and prospects. *Lancet* 2012;380:247–57.
- Kirk MA, Rhodes RE. Occupation correlates of adults' participation in leisure-time physical activity: a systematic review. *Am J Prev Med* 2011;40:476–85.
- Heath GW, Parra DC, Sarmiento OL, et al. Evidence-based intervention in physical activity: lessons from around the world. *Lancet* 2012;380:272–81.
- Conn VS, Hafdahl AR, Cooper PS, et al. Meta-analysis of workplace physical activity interventions. *Am J Prev Med* 2009;37:330–9.
- Schröer S, Haupt J, Pieper C. Evidence-based lifestyle interventions in the workplace—an overview. *Occup Med* 2014;64:8–12.
- World Health Organization. Interventions on diet and physical activity: what works: Summary report. 2009. <http://www.who.int/dietphysicalactivity/summary-report-09.pdf>
- Mozaffarian D, Afshin A, Benowitz NL, et al. Population approaches to improve diet, physical activity, and smoking habits: a scientific statement from the American Heart Association. *Circulation* 2012;126:1514–63.
- Matson-Koffman DM, Brownstein JN, Neiner JA, et al. A site-specific literature review of policy and environmental interventions that promote physical activity and nutrition for cardiovascular health: what works? *Am J Health Promot* 2005;19:167–93.
- Hutchinson AD, Wilson C. Improving nutrition and physical activity in the workplace: a meta-analysis of intervention studies. *Health Promot Int* 2012;27:238–49.
- Kwak L, Hagströmer M, Jensen I, et al. Promoting physical activity and healthy dietary behavior: the role of the occupational health services: a scoping review. *J Occup Environ Med* 2014;56:35–46.
- Anderson LM, Quinn TA, Glanz K, et al. The effectiveness of worksite nutrition and physical activity interventions for controlling employee overweight and obesity: a systematic review. *Am J Prev Med* 2009;37:340–57.
- Soler RE, Leeks KD, Buchanan LR, et al. Point-of-decision prompts to increase stair use. A systematic review update. *Am J Prev Med* 2010;38:S292–300.
- Bellicha A, Kieusseian A, Fontvieille AM, et al. Stair-use interventions in worksites and public settings - a systematic review of effectiveness and external validity. *Prev Med* 2015;70:3–13.
- Lin YP, McCullagh MC, Kao TS, et al. An integrative review: work environment factors associated with physical activity among white-collar workers. *West J Nurs Res* 2014;36:262–83.
- Sallis JF, Owen N, Fisher EB. Ecological models of health behavior. In: Glanz K, Rimer BK, Viswanath K, eds. *Health Behavior and Health Education: Theory, Research, and Practice*. 4th ed. New York NY: Jossey-Bass A Wiley Imprint, 2008.
- Engbers LH, van Poppel MN, Chin A Paw MJ, van Mechelen W. Worksite health promotion programs with environmental changes: a systematic review. *Am J Prev Med* 2005;29:61–70.
- Freak-Poli RL, Cumpston M, Peeters A, et al. Workplace pedometer interventions for increasing physical activity. *Cochrane Database Syst Rev* 2013;30:CD009209.

31. To QG, Chen TT, Magnussen CG, *et al.* Workplace physical activity interventions: a systematic review. *Am J Health Promot* 2013;27:e113–23.
32. Hipp JA, Reeds DN, van Bakergem MA, *et al.* Review of measures of worksite environmental and policy supports for physical activity and healthy eating. *Prev Chronic Dis* 2015;12:E65.
33. Racette SB, Deusinger SS, Inman CL, *et al.* Worksite Opportunities for Wellness (WOW): effects on cardiovascular disease risk factors after 1 year. *Prev Med* 2009;49:108–14.
34. Dishman RK, DeJoy DM, Wilson MG, *et al.* Move to Improve: a randomized workplace trial to increase physical activity. *Am J Prev Med* 2009;36:133–41.
35. French SA, Harnack LJ, Hannan PJ, *et al.* Worksite environment intervention to prevent obesity among metropolitan transit workers. *Prev Med* 2010;50:180–5.
36. McEachan RR, Lawton RJ, Jackson C, *et al.* Testing a workplace physical activity intervention: a cluster randomized controlled trial. *Int J Behav Nutr Phys Act* 2011;8:29.
37. Ministry of Internal Affairs and Communications. An economical census in 2014: a basic survey (definite report). 2015. [http://www.stat.go.jp/data/e-census/2014/pdf/kaku\\_gaiyo.pdf](http://www.stat.go.jp/data/e-census/2014/pdf/kaku_gaiyo.pdf) (accessed 5 Apr 2017).
38. Watanabe K, Otsuka Y, Shimazu A, *et al.* The moderating effect of health-improving workplace environment on promoting physical activity in white-collar employees: a multi-site longitudinal study using multi-level Structural equation modeling. *J Occup Environ Med* 2016;58:178–84.
39. DeJoy DM, Wilson MG, Goetzel RZ, *et al.* Development of the Environmental Assessment Tool (EAT) to measure organizational physical and social support for worksite obesity prevention programs. *J Occup Environ Med* 2008;50:126–37.
40. Bandura A. Social foundations of thought and action: A social cognitive theory. *Englewood Cliffs NJ: Prentice-Hall* 1986.
41. Rhodes RE, Pfaeffli LA. Mediators of physical activity behaviour change among adult non-clinical populations: a review update. *Int J Behav Nutr Phys Act* 2010;7:37.
42. Hallam JS, Petosa R. The long-term impact of a four-session work-site intervention on selected social cognitive theory variables linked to adult exercise adherence. *Health Educ Behav* 2004;31:88–100.
43. Chan AW, Tetzlaff JM, Altman DG, *et al.* SPIRIT 2013 statement: defining standard protocol items for clinical trials. *Ann Intern Med* 2013;158:200–7.
44. Watanabe K, Kawakami N. A relationship between workplace health promotion environment and leisure-time physical activity among employees: a multi-site cross sectional study. *Int J Behav Med* 2016;23:S248.
45. Parker KB, DeJoy DM, Wilson MG, *et al.* Application of the Environmental Assessment Tool (EAT) as a process measure for a worksite weight management intervention. *J Occup Environ Med* 2010;52(Suppl 1):S42–51.
46. Beresford SA, Bishop SK, Brunner NL, *et al.* Environmental assessment at worksites after a multilevel intervention to promote activity and changes in eating: the PACE project. *J Occup Environ Med* 2010;52(Suppl 1):S22–8.
47. Yamashita A, Kawakami M, Inagaki Y, *et al.* A prescriptive exercise program for health maintenance. *Int J Occup Saf Ergon* 2001;7:195–209.
48. Sriramtr S, Berry TR, Spence JC. An Internet-based intervention for promoting and maintaining physical activity: a randomized controlled trial. *Am J Health Behav* 2014;38:430–9.
49. World Health Organization. Global Physical Activity Questionnaire (GPAQ): analysis guide. [http://www.who.int/chp/steps/resources/GPAQ\\_Analysis\\_Guide.pdf](http://www.who.int/chp/steps/resources/GPAQ_Analysis_Guide.pdf)
50. Bull FC, Maslin TS, Armstrong T. Global physical activity questionnaire (GPAQ): nine country reliability and validity study. *J Phys Act Health* 2009;6:790–804.
51. Murase N, Katsumura T, Ueda C, *et al.* Validity and reliability of Japanese version of International Physical Activity Questionnaire. *J Health Welf Stat* 2002;49:1–9.
52. Craig CL, Marshall AL, Sjöström M, *et al.* International physical activity questionnaire: 12-country reliability and validity. *Med Sci Sports Exerc* 2003;35:1381–95.
53. Blake H, Suggs LS, Coman E, *et al.* Active8! Technology-based intervention to promote physical activity in hospital employees. *Am J Health Promot* 2017;31:109–18.
54. Mahmoodabad SSM, Tonekaboni NR, Farmanbar R, *et al.* The effect of motivational interviewing-based intervention using self-determination theory on promotion of physical activity among women in reproductive age: a randomized clinical trial. *Electron Physician* 2017;9:4461–72.
55. Watson ED, Micklesfield LK, van Poppel MNM, *et al.* Validity and responsiveness of the Global Physical Activity Questionnaire (GPAQ) in assessing physical activity during pregnancy. *PLoS One* 2017;12:e0177996.
56. World Health Organization. Global physical activity surveillance. <http://www.who.int/chp/steps/GPAQ/en/>
57. Umstad MR, Motl R, Wilcox S, *et al.* Measuring physical activity self-regulation strategies in older adults. *J Phys Act Health* 2009;6(Suppl 1):S105–12.
58. Watanabe K, Kawakami N, Adachi H, *et al.* Internal consistency, convergent validity, and structural validity of the Japanese version of the Physical Activity Self-Regulation scale (PASR-12) among Japanese workers: a validation study. *J Occup Health* 2017;59:24–32.
59. Shimomitsu T, Haratani T, Nakamura K, *et al.* Final development of the Brief Job Stress Questionnaire mainly used for assessment of the individuals. In: Kato M, ed. *The Ministry of Labor Sponsored Grant for the Prevention of Work- Related Illness*. Tokyo: Tokyo Medical University, 2000:126–64.
60. Wada K, Sairenchi T, Haruyama Y, *et al.* Relationship between the onset of depression and stress response measured by the Brief Job Stress Questionnaire among Japanese employees: a cohort study. *PLoS One* 2013;8:e56319.
61. Inoue A, Kawakami N, Shimomitsu T, *et al.* Development of a short questionnaire to measure an extended set of job demands, job resources, and positive health outcomes: the new brief job stress questionnaire. *Ind Health* 2014;52:175–89.
62. Campbell MK, Piaggio G, Elbourne DR, *et al.* Consort 2010 statement: extension to cluster randomised trials. *BMJ* 2012;345:e5661.
63. Campbell MK, Elbourne DR, Altman DG. CONSORT statement: extension to cluster randomised trials. *BMJ* 2004;328:702–8.
64. Quist HG, Christensen U, Carneiro IG, *et al.* Do colleagues influence our lifestyle: the matter of smoking, body mass index and leisure-time physical activity? *Prev Med* 2014;67:166–70.
65. LaMontagne AD, Milner AJ, Allisey AF, *et al.* An integrated workplace mental health intervention in a policing context: protocol for a cluster randomised control trial. *BMC Psychiatry* 2016;16:49.
66. Faul F, Erdfelder E, Lang AG, *et al.* G\*Power 3: a flexible statistical power analysis program for the social, behavioral, and biomedical sciences. *Behav Res Methods* 2007;39:175–91.
67. Faul F, Erdfelder E, Buchner A, *et al.* Statistical power analyses using G\*Power 3.1: tests for correlation and regression analyses. *Behav Res Methods* 2009;41:1149–60.
68. Whittaker TA, Pituch KA, McDougall GJ. Latent growth modeling with domain-specific outcomes comprised of mixed response types in intervention studies. *J Consult Clin Psychol* 2014;82:746–59.
69. Hu Li-tze, Bentler PM. Cutoff criteria for fit indexes in covariance structure analysis: Conventional criteria versus new alternatives. *Struct Equ Modeling* 1999;6:1–55.
70. Muthén LK, Muthén BO. *Mplus User's Guide*. 7th edition. Los Angeles, CA, 1998–2015. <https://www.statmodel.com/ug excerpts.shtml>