



What is the rhythm?

A. W. G. J. Oomen¹ · R. W. Sy^{1,2}

Published online: 31 August 2018
© The Author(s) 2018

A 22-year-old female presented with a history of palpitations. During follow-up the electrocardiogram (ECG) shown below (Fig. 1) was recorded. Her baseline ECG during sinus rhythm showed no pre-excitation. Physical examination and echocardiogram were both unremarkable.

What is the most likely diagnosis for the arrhythmia?

Answer

You will find the answer elsewhere in this issue.

Open Access This article is distributed under the terms of the Creative Commons Attribution 4.0 International License (<http://creativecommons.org/licenses/by/4.0/>), which permits unrestricted use, distribution, and reproduction in any medium, provided you give appropriate credit to the original author(s) and the source, provide a link to the Creative Commons license, and indicate if changes were made.

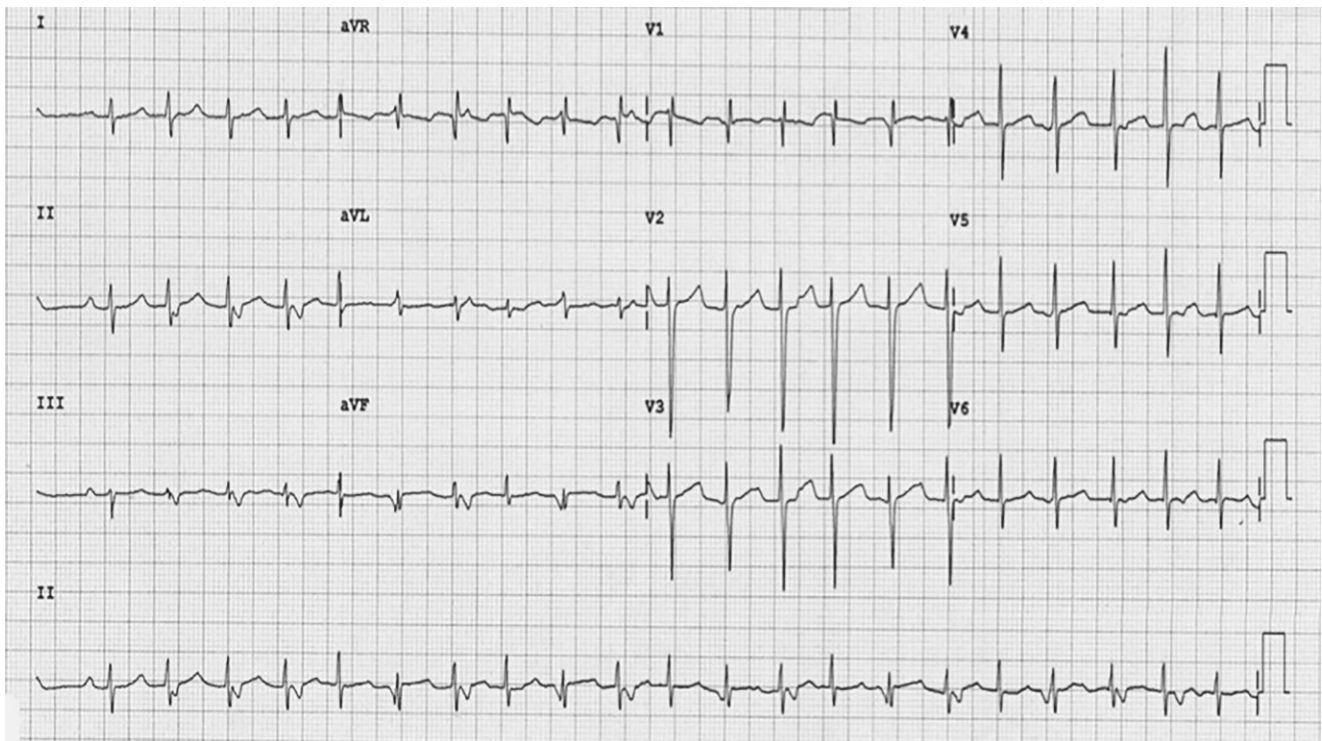


Fig. 1 ECG at presentation

✉ R. W. Sy
raymond.sy01@gmail.com

¹ Department of Cardiology, Royal Prince Alfred Hospital, Camperdown, NSW, Australia

² Sydney Medical School, University of Sydney, Sydney, NSW, Australia



Advertisement placed here.



Houten 2018

Advertisement placed here.



Houten 2018