

pSONIC: Ploidy-aware Syntenic Orthologous Networks Identified via Collinearity

Justin L. Conover ¹, Joel Sharbrough ^{2,3} and Jonathan F. Wendel ^{1,*}

¹Department of Ecology, Evolution, and Organismal Biology, Iowa State University, Ames, IA 50011, USA

²Biology Department, Colorado State University, Fort Collins, CO 80521, USA

³Biology Department, New Mexico Institute of Mining and Technology, Socorro, NM 87801, USA

*Corresponding author: Department of Ecology, Evolution, and Organismal Biology, Iowa State University, 251 Bessey Hall, 2200 Osborn Drive, Ames, IA 50011, USA.
Email: jfw@iastate.edu

Abstract

With the rapid rise in availability of high-quality genomes for closely related species, methods for orthology inference that incorporate synteny are increasingly useful. Polyploidy perturbs the 1:1 expected frequencies of orthologs between two species, complicating the identification of orthologs. Here we present a method of ortholog inference, Ploidy-aware Syntenic Orthologous Networks Identified via Collinearity (pSONIC). We demonstrate the utility of pSONIC using four species in the cotton tribe (*Gossypieae*), including one allopolyploid, and place between 75% and 90% of genes from each species into nearly 32,000 orthologous groups, 97% of which consist of at most singletons or tandemly duplicated genes—58.8% more than comparable methods that do not incorporate synteny. We show that 99% of singleton gene groups follow the expected tree topology and that our ploidy-aware algorithm recovers 97.5% identical groups when compared to splitting the allopolyploid into its two respective subgenomes, treating each as separate “species.”

Keywords: orthology; synteny; polyploidy; OrthoFinder; MCScanX

Introduction

The recent explosion in high-quality genome assemblies has increased the opportunity to investigate biological questions using a comparative genomics framework. An essential first step in many applications is inference of a high-confidence set of orthologs in the genomes under study. Methods for inferring orthologs are broadly based on sequence similarity, either through the construction of phylogenetic trees or through clustering of sequence similarity scores. There has been considerable progress in developing methods that curate a genome-wide set of orthologs for distantly related genomes (Trachana *et al.* 2011; Emms and Kelly 2020), prioritizing flexibility for use on species with fragmented genome assemblies or even transcriptome assemblies, *e.g.*, Inparanoid (O’Brien *et al.* 2005), OrthoMCL (Li *et al.* 2003), and OrthoFinder (Emms and Kelly 2015, 2019). As genomes for closely related species become more prevalent, however, methods designed for deep-phylogenetic identification are less than optimal, as new methods can leverage conserved gene order across closely related species (*i.e.*, synteny) as powerful evidence for orthology. Two closely related species have largely collinear genomes, barring chromosomal rearrangements or small-scale gene loss or gain events (*e.g.*, via transposition) that break up blocks of collinear genes (Dehal and Boore 2005). Programs have been developed to identify these collinear blocks [*e.g.*, MCScanX (Wang *et al.* 2012) and CoGe (Lyons *et al.* 2008)] but these methods are restricted to pairwise comparisons (MCScanX) or comparisons

among three genomes (CoGe), and similar, but methodologically distinct, approaches for inferring syntenic orthologs have been successfully employed in a handful of other taxa (Lovell *et al.* 2018, 2021; Mamidi *et al.* 2020), but are not yet publicly available.

A biological feature that can complicate orthology inference is whole-genome multiplication (polyploidy), which is widespread throughout the tree of life (Van de Peer *et al.* 2017; Li *et al.* 2018), especially in plants (Jiao *et al.* 2011; One Thousand Plant Transcriptomes Initiative 2019). In the case of ancient polyploids, extensive gene deletion and chromosome rearrangement (Wendel 2015) often obscures the expected number of gene copies that should be present in a genome and complicates pairwise genome alignments, syntenic block detection, and gene tree—species tree reconciliation. Differences in ancestral ploidy levels have not been integrated into existing programs for detecting orthologs, although this is essential for obtaining accurate estimates of orthogroup completeness.

Here, we present a new method of ortholog inference, Ploidy-aware Syntenic Orthologous Networks Identified via Collinearity (pSONIC), which uses pairwise collinearity blocks from multiple species inferred via MCScanX, along with a high-confidence set of singleton orthologs identified through OrthoFinder, to curate a genome-wide set of syntenic orthologs. As part of pSONIC’s inference, we developed a ploidy-aware algorithm to identify collinear blocks originating from both speciation and duplication events. To evaluate pSONIC’s performance in a system with a complex history of duplication and speciation, we tested pSONIC on four

Received: February 16, 2021. Accepted: May 03, 2021

© The Author(s) 2021. Published by Oxford University Press on behalf of Genetics Society of America.

This is an Open Access article distributed under the terms of the Creative Commons Attribution License (<http://creativecommons.org/licenses/by/4.0/>), which permits unrestricted reuse, distribution, and reproduction in any medium, provided the original work is properly cited.

species in the cotton tribe (*Gossypieae*), including one allopolyploid, its two closest diploid progenitors, and a phylogenetic outgroup. Our method assigned between 75% and 90% of all genes into orthogroups, and when compared to OrthoFinder, identifies 40% more single-copy orthogroups (97% of which exhibit gene tree topologies consistent with the species relationships within the *Gossypieae*) and 33% more orthogroups that contain only tandemly duplicated genes from each species. To demonstrate the effectiveness of our ploidy-aware algorithm, we show that, unlike OrthoFinder, splitting the tetraploid genome into its respective genomes has little effect on our final set of orthogroups.

Methods

Required input for pSONIC includes the list of orthogroups inferred from OrthoFinder (-og flag) and the files containing the list of collinearity groups and tandemly duplicated genes from MCScanX (default parameters). In total, all that is needed to use pSONIC is a gff file for each genome and a corresponding fasta file of protein sequences. To reduce the memory requirements of MCScanX and pSONIC, gene names are converted to the style of OrthoFinder (this can be done using the [translate_gff] flag in the pSONIC program). Additionally, an optional file providing the relative degree of ploidy increase for each species can be used for analyses in which a polyploidy event has occurred along the phylogeny of the species in the analysis. In the example below from the cotton tribe, we run two analyses to demonstrate this: one in which the subgenomes of allopolyploid *Gossypium hirsutum* ($2n = 4x$) is run normally (i.e., the relative ploidy is 2 compared to all other species in the analysis), and a second in which the genome has been split into its respective subgenomes, with each treated as a separate “species.” This feature allows the possibility of syntenic analysis of genomes with varying complexities of ploidy histories, including those where clear partitioning into subgenomes is not possible.

The pSONIC pipeline proceeds in four basic steps. First, OrthoFinder results are parsed to find “tethers”—that is, orthogroups in which at least two species have fewer than or equal to the number of “gene sets” expected from relative ploidy levels. Here, we define “gene sets” to include a gene and all immediately neighboring tandemly duplicated genes (as determined by MCScanX). Using “gene sets” instead of singleton genes dramatically increases the number of tethers that can be used in steps two and three without creating spurious cases of inferred collinearity (Table 1). For any orthogroup in which some, but not all, species contain more gene sets than expected by ploidy, genes from these species are excluded while genes from all other species are included in downstream steps. Our method also permits inference of orthology when specific orthologs are missing due to, for example, gene loss following polyploidy.

The second step of the pSONIC pipeline is to parse the output from MCScanX to find syntenic blocks that are the result of speciation or whole-genome duplication events, such that each syntenic block can be represented as a single chromosomal segment in the most recent common ancestor of all species in the analysis. Ancient duplication events create syntenic blocks (Figure 1), which MCScanX will identify as long as the genes in this block have sufficient protein sequence similarity. For each syntenic block, each pair of genes along the block is compared to the set of tethers described in Step 1. Each gene pair is given one of three classifications: (1) “Pass”; (2) “No Call”; or (3) “Not Pass.” The decision tree leading to this classification is described in Figure 2. Syntenic blocks that contain fewer than two gene pairs with

“Pass” scores, or that contain more “Not Pass” scores than “Pass” scores, are discarded and removed from further analysis.

Third, for those blocks that pass the filtering in Step 2, the ends of the collinear block are trimmed to remove incorrectly placed gene pairs at the ends of blocks, or to split blocks that were incorrectly concatenated in a single syntenic block by MCScanX. The details of this filtering process are described in Figure 3. These filtering procedures are repeated recursively until all criteria are fulfilled. If any block postfiltering contains fewer than five genes, that block is removed from downstream analyses. We implemented these filters because we found that toward the ends of some collinear blocks, there were several successive gene pairs that received “Not Pass” scores even though the block collectively received many more “Pass” scores, and adding this filter greatly increased the number of resulting tethered groups.

Finally, all collinear blocks that pass Step 3 are assembled into a set of syntenic genes across all species. To do this, we first construct an empty graph where the vertices include all genes from all species. We then treat each pair of genes along every collinear block as edges of this graph. Tandem duplicates represent a specific case of syntenic orthology, and where present, are also included as edges in the graph. This graph is then separated (i.e., decomposed) into its connected components (i.e., subgraphs). These subgraphs are constructed such that no gene is placed into more than one subgraph; every gene within a subgraph is connected to every other gene in that subgraph, even if not directly syntenic orthologs (e.g., by tandem duplication); and each subgraph contains at least two genes representing a syntenic group of orthologs. Thus, by synthesizing pairwise gene-order collinearity tracts into multiple-species collinearity subgraphs using amino acid sequence similarity, we are able to infer genome-wide orthologs in extensively duplicated genomes and across multiple species, simultaneously.

Data availability

pSONIC is a program written in Python (written and tested on Python v3.7.7) and is freely available on GitHub (<https://github.com/conJUSTover/pSONIC>). Test data sets for running the program are provided on GitHub. Supplementary files are available at FigShare (<https://doi.org/10.25387/g3.14043623>). Supplementary File S1 contains blast scores for both cotton analyses of MCScanX and OrthoFinder. Supplementary File S2 contains alignments, model selection, gene trees, and a summary file of all phylogenetic trees for over 17,000 singleton orthogroups identified by pSONIC.

Results and discussion

pSONIC identifies single-copy orthogroups with high resolution

To show the utility of pSONIC, we created a genome-wide list of orthologs for genomes from four species in the cotton tribe (*Gossypieae*); specifically, allopolyploid *G. hirsutum* (Saski et al. 2017), two model progenitors of the polyploid [*Gossypium raimondii* (Paterson et al. 2012) and *Gossypium arboreum* (Du et al. 2018)], and an outgroup, *Gossypioides kirkii* (Udall et al. 2019). All protein sequences and gff files were downloaded from CottonGen (Yu et al. 2014) and only the primary isoforms of proteins located on the annotated chromosomes of each species were used in this analysis. All original files used are provided in the GitHub repository as a test data set, and BLAST files to run MCScanX can be found in Supplementary File S1. While there is a history of complicated polyploidization events in the family (Malvaceae) to which cotton belongs (Conover et al. 2019), only one

Table 1. Summary statistics of OrthoFinder vs pSONIC

	Split tetraploid into subgenomes		Unsplit tetraploid	
	OrthoFinder	pSONIC	OrthoFinder	pSONIC
Total groups of orthologs	28,036	31,963	28,268	31,967
Total singleton groups	12,294	17,197	11,155 ^a	17,258 ^a
Tether groups ^b	21,624	31,016	19,558	31,051
Species-specific groups	53	1,517	50	1,654

^aThe number of groups in which all diploid species contributed one gene and the tetraploid species contributed two genes are shown. There were an additional 2,624 gene groups produced by OrthoFinder and 1,718 gene groups produced by pSONIC that were composed of a single sequence from all four species, including *G. hirsutum*.

^bTether Groups refer to those groups in which all diploid species have one or zero genes (or tandemly duplicated sets of genes) and the tetraploid species has two or fewer genes (or tandemly duplicated sets of genes).

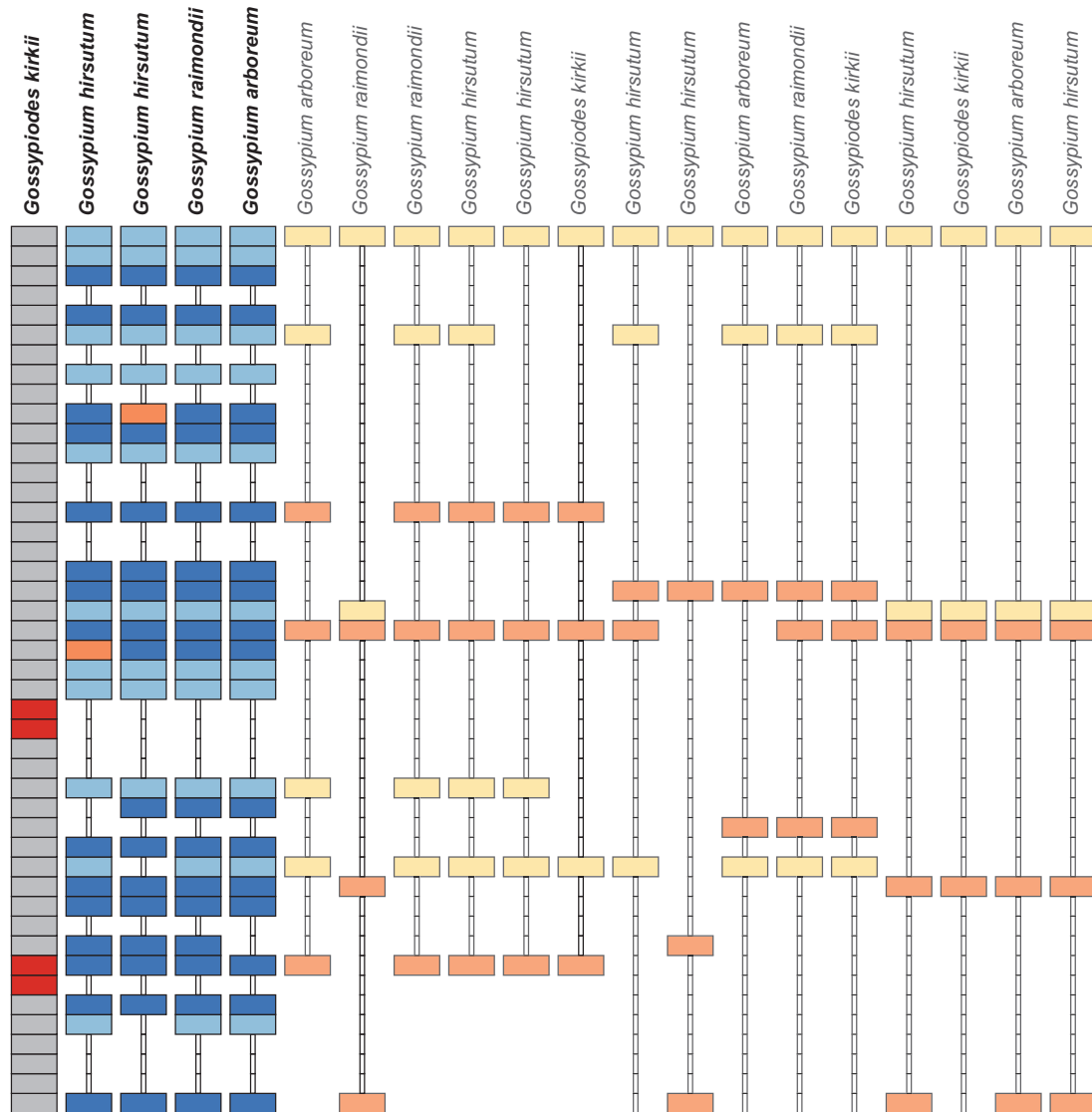


Figure 1 Syntenic blocks inferred by MCScanX mapped onto a single chromosomal region make for complicated multi-species inference of syntenic orthology. A sample of collinear blocks identified by MCScanX (one per column) is shown aligned to a segment of chromosome KI24 in *Gs. kirkii* (dark grey). Due to ancient whole-genome duplication events, many syntenic blocks may map onto the same chromosomal region of a reference genome. Genes that are tandemly duplicated in the reference genome are shown in red. We classify each gene pair in each collinear block into one of three groups: Pass (dark blue) if both genes are in the same tether set; Not Pass (orange) if only one of the two genes is in a tether set, but the other gene is absent; and No Score (light blue/yellow) if neither gene is in a tether set. Light blue genes are included in the list of edges because the collinear group they belong to had more than two “Pass” scores, and more Pass scores than “Not Pass” scores (groups indicated by species names above in bold).

neopolyploidy event is included among the species chosen, making this an ideal system to demonstrate the utility and flexibility of pSONIC.

We first decided to split the subgenomes of allopolyploid *G. hirsutum* into its respective subgenomes, treating them as separate “species.” From this split input, OrthoFinder produced 28,036

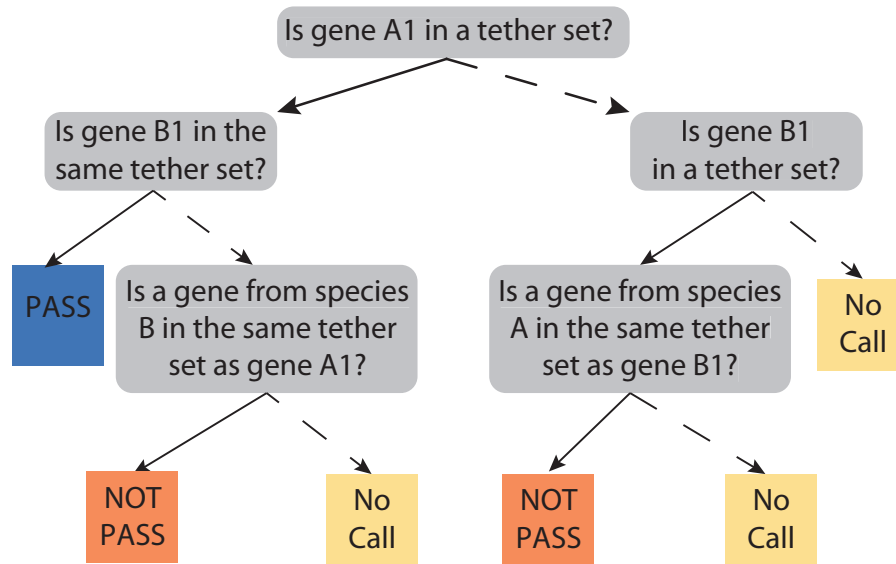


Figure 2 Decision Tree for Scoring Gene Pairs. Consider the first gene pair along a collinear block consisting of genes A1 and B1 from species A and B, respectively. pSONIC scores this gene pair based on a set of questions. Starting from the top-most question, if the answer is “yes,” follow the solid line; if the answer is “no,” follow the dashed line. Briefly, if both genes A1 and B1 are in the same tether set, they are classified as “Pass,” and if they are in different tether sets, they are classified as “Not Pass.” If neither gene is found in any tether set, they are classified as “No Call.” Finally, if the tether set that contains one of the genes (e.g., A1) also contains a gene from the other species (e.g., species B) that is not the gene pair in question (i.e., B1), then that gene pair is classified as “Not Pass”; however, if that tether set does not contain any genes from the other species (e.g., species B), then the gene pair is classified as “No Call.” Importantly, the above tree results in the exact same output regardless of which gene in the pair is considered A1. In the case of scoring a collinear block between two regions of the same tetraploid genome, species A and species B are the same, and the same decision tree is used.

orthogroups, 21,624 of which were classified as “tethers,” and 12,294 that contained exactly one gene sequence from each species (i.e., single-copy orthogroups). MCScanX initially identified 20,392 collinear blocks between the five species, but only 1833 passed the filtering criteria of pSONIC, highlighting the complex history of polyploidy in this tribe. After trimming and splitting these blocks, pSONIC assembled the remaining 238,452 edges into 31,963 groups of orthologs (Table 1). Of these, 17,197 contained exactly one gene from each species and 31,016 groups contained at most one gene set (i.e., singleton gene or one tandemly duplicated set of genes). The total decrease in the number of genes placed into orthogroups by pSONIC relative to OrthoFinder (Table 2) can be partially explained by OrthoFinder incorrectly placing multiple sets of orthologs into the same orthogroup [including incorrectly placed genes due to variable rates of sequence evolution (Emms and Kelly 2019)], and pSONIC’s inability to accurately place orthologs that are not syntenic (either due to genome assembly error or transposition via TEs) or genes involved in small-scale (<5 genes) rearrangements. However, the 40% increase in singleton groups compared to OrthoFinder demonstrates a remarkable improvement in resolution of gene composition and demonstrates the usefulness of pSONIC for analyses containing only diploid species.

To evaluate the quality of the orthologous relationships inferred by pSONIC, we quantified the extent to which single-copy gene groups reflected the phylogenetic history for these four well-differentiated species. We aligned CDS sequences using MAFFT v 7.407 (Katoh and Standley 2013), selected models of evolution using jModelTest v2.1.10 (Darriba et al. 2012), inferred gene trees using PhyML v20130103 (Guindon and Gascuel 2003), and compared tree topology for each of the single-copy genes identified by pSONIC to the known species relationships. Of the 17,197 single-copy genes, we found that 17,057 (99.2%) exhibited a tree topology consistent with the species tree. We also used *Gs. kirkii* to test root placement on the 17,057 topologically consistent gene

trees and found that the root was between the A and D lineages in 15,950 (93.5%) gene trees (Supplementary File S2). Together, these phylogenetic results indicate that the gene sets inferred by pSONIC are highly likely to be true orthologs.

Efficacy of the ploidy-aware algorithm

We also ran pSONIC while treating *G. hirsutum* as a single species instead of treating each subgenome as separate species to show the utility of the ploidy-aware algorithm. Interestingly, OrthoFinder placed fewer genes from all species into orthogroups, including 5122 fewer genes from *G. hirsutum*, and identified fewer singleton and tether groups than when the tetraploid genome was split *a priori* (Table 1). However, the poorer performance of OrthoFinder had a negligible effect on the number of genes from each species placed in orthogroups by pSONIC. Specifically, 40 more genes from *G. hirsutum* were placed into orthogroups in our ploidy-aware algorithm, and only 21, 16, and 2 fewer genes from *G. arboreum*, *G. raimondii*, and *Gs. kirkii* were included, respectively (Table 2). pSONIC was able to identify 54.7% more (17,258 vs 11,155) singleton orthologous groups (i.e., groups in which the tetraploid had two genes and all diploids had one gene) and 58.7% more (31,051 vs 19,558) tether groups (i.e., groups in which the tetraploid had two or fewer genes or tandemly duplicated gene sets, while each diploid had at most one gene or tandemly duplicated gene set) than OrthoFinder (Table 1).

When we compare the syntenic orthologous groups produced by the ploidy-aware algorithm to splitting the polyploid *a priori*, the results are largely identical. The two approaches produced 31,101 groups with identical gene membership (Supplementary File S2). The ploidy-aware method identified 27 groups in which no genes were placed in the *a priori* split groups, while the *a priori* split method produced 52 groups in which no genes were placed in the ploidy-aware groups. There was a small proportion (~2.5%) of groups in which gene membership overlapped but was not identical across the two methods. The 810 groups recovered from

the *a priori* split method that overlapped non-identically with 839 groups recovered from the ploidy-aware method formed 691 combined gene groups. Of these 691 overlapping gene groups, we found 570 (82.5%) in which the two methods directly conflicted about which genes from a given species were to be included, and 121 (17.5%) groups that did not disagree with respect to the genes from any given species, but included genes from individual species that were recovered by one method but not the other. In sum, the ploidy-aware algorithm agreed with the *a priori* ploidy determined set of genes in over 98.2% of cases, indicating that *a priori* splitting of polyploid subgenomes is not strictly necessary.

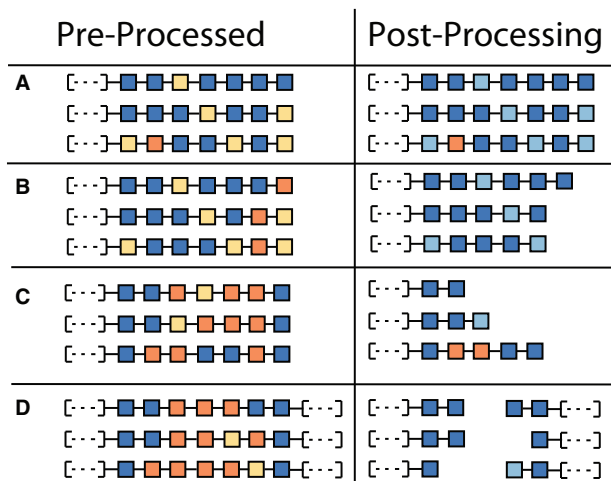


Figure 3 Syntenic block trimming using tethered genes improves quality of syntenic orthology inferences. For collinear blocks that have at least two “Pass” scores and more “Pass” scores than “Not Pass,” pSONIC trims the edges of the blocks to ensure proper cutoff placement of the block ends. (A) If the end of the collinear block contains a “Pass” score, or if no “Not Pass” gene pairs are more distal than the first “Pass” gene pair, then all gene pairs are retained and used as edges in the graph construction step of pSONIC. (B) If the end-most gene pair received a “Not Pass” score, then it is removed from the collinear block. Likewise, if no gene pair received a “Pass” score before the endmost “Not Pass” gene pair, then all gene pairs up to and including that “Not Pass” gene pair is removed from the collinear block. (C) For the first six gene pairs that receive either a “Pass” or “Not Pass” score, if the number of “Not Pass” scores is three or more, the endmost gene pair is removed from the collinear block. This process is repeated until the number of “Pass” gene pairs outnumber the “Not Pass” gene pairs. As depicted in the third row, some “Not Pass” gene pairs could still pass after this filter is applied. (D) If there is an internal segment of the collinear block that contains three or more “Not Pass” scores without any intervening “Pass” scores, the block is split into two, and the ends of the new blocks are trimmed using processes described in (B) and (C). Each collinear block must pass all filters to be used in downstream steps.

Output files

pSONIC produces several output files that describe the orthogroups, including the number of genes from each species included in each orthogroup, how many gene sets (*i.e.*, sets of tandemly duplicated genes) from each species are included in each orthogroup, statistics from every collinear group (*e.g.*, block size, how many “Pass” vs “No Pass” scores, etc.), how the ends of every collinear block were trimmed and/or split, and which collinear groups were used in the final step of creating the final set of orthologs. Details about these individual files are explained in full in the README file in the GitHub repository.

Scalability

pSONIC can be run on any number of genomes, with the trivial case being two. The runtime for pSONIC increases linearly with the number of gene pairs placed into syntenic blocks by MCScanX and has little correlation with the output size of OrthoFinder. Because MCScanX scales approximately quadratically with the number of chromosomes in the analysis, we recommend users remove scaffolds with small numbers of genes to avoid intractable runtimes. pSONIC also scales linearly with the number of collinear blocks that pass the second step; however, this will vary between analyses depending on the sample size, the number of chromosomes in the analysis, and the number of chromosomal rearrangements and polyploidy events that separate the samples, so this is difficult to estimate and will likely vary greatly. Because pSONIC was designed with closely related species in mind, we caution that pSONIC’s performance may decline with the inclusion of distantly related species (*e.g.*, from different families or orders). To demonstrate the utility of pSONIC to other clades outside of the Gossypieae, we have included a test data set in the GitHub repository that includes six species in the Triticeae, including one allohexaploid, two allotetraploids, and three diploid relatives.

Acknowledgments

The authors thank the Iowa State University Research/IT Unit for computational support. They also thank two anonymous reviewers for helpful comments on the manuscript.

Funding

This work was supported by funding from National Science Foundation-Plant Genome Research Program (award 1829176 to J.S. and J.F.W.) and Cotton Inc. (award IRT1134 to J.F.W. and J.L.C.). This work utilized resources from the University of

Table 2. Performance of OrthoFinder and pSONIC when splitting tetraploid genomes into subgenomes

	Analysis with splitting <i>G. hirsutum</i> into subgenomes					Analysis without splitting <i>G. hirsutum</i>			
	<i>G. arboreum</i>	<i>G. raimondii</i>	<i>G. hirsutum</i> (At)	<i>G. hirsutum</i> (Dt)	<i>Gs. kirkii</i>	<i>G. arboreum</i>	<i>G. raimondii</i>	<i>G. hirsutum</i>	<i>Gs. kirkii</i>
Total genes in genome	37,972	37,223	32,295	33,341	36,669	37,972	37,223	65,636	36,669
Genes included in OrthoFinder (% of total genes)	33,452 (88.1%)	34,344 (92.3%)	30,118 (93.3%)	31,527 (94.6%)	26,747 (72.9%)	33,401 (88.0%)	34,271 (92.1%)	56,523 (86.1%) (85.0% At 87.2% Dt)	26,671 (72.7%)
Genes included in pSONIC (% of total genes)	31,319 (82.5%)	32,793 (88.1%)	28,514 (88.3%)	30,069 (90.2%)	27,657 (75.4%)	31,298 (82.4%)	32,777 (88.1%)	58,623 (89.3%) (88.1% At 90.5%Dt)	27,655 (75.4%)

Colorado Boulder Research Computing Group, which is supported by the National Science Foundation (awards ACI-1532235 and ACI-1532236), the University of Colorado Boulder, and Colorado State University.

Conflicts of interest

None declared.

Literature cited

- Conover JL, Karimi N, Stenz N, Ané C, Grover CE, et al. 2019. A Malvaceae mystery: a mallow maelstrom of genome multiplications and maybe misleading methods? *J Integr Plant Biol.* 61: 12–31.
- Darriba D, Taboada GL, Doallo R, Posada D. 2012. jModelTest 2: more models, new heuristics and parallel computing. *Nat Methods.* 9: 772.
- Dehal P, Boore JL. 2005. Two rounds of whole genome duplication in the ancestral vertebrate. *PLoS Biol.* 3:e314.
- Du X, Huang G, He S, Yang Z, Sun G, et al. 2018. Resequencing of 243 diploid cotton accessions based on an updated A genome identifies the genetic basis of key agronomic traits. *Nat Genet.* 50: 796–802.
- Emms DM, Kelly S. 2015. OrthoFinder: solving fundamental biases in whole genome comparisons dramatically improves orthogroup inference accuracy. *Genome Biol.* 16:157.
- Emms DM, Kelly S. 2019. OrthoFinder: phylogenetic orthology inference for comparative genomics. *Genome Biol.* 20:238.
- Emms DM, Kelly S. 2020. Benchmarking orthogroup inference accuracy: revisiting orthobench. *Genome Biol Evol.* 12:2258–2266.
- Guindon S, Gascuel O. 2003. A simple, fast, and accurate algorithm to estimate large phylogenies by maximum likelihood. *Syst Biol.* 52:696–704.
- Jiao Y, Wickett NJ, Ayyampalayam S, Chanderbali AS, Landherr L, et al. 2011. Ancestral polyploidy in seed plants and angiosperms. *Nature.* 473:97–100.
- Katoh K, Standley DM. 2013. MAFFT multiple sequence alignment software version 7: improvements in performance and usability. *Mol Biol Evol.* 30:772–780.
- Li L, Stoeckert CJ Jr, Roos DS. 2003. OrthoMCL: identification of ortholog groups for eukaryotic genomes. *Genome Res.* 13: 2178–2189.
- Li Z, Tiley GP, Galuska SR, Reardon CR, Kidder TI, et al. 2018. Multiple large-scale gene and genome duplications during the evolution of hexapods. *Proc Natl Acad Sci U S A.* 115:4713–4718.
- Lovell JT, Jenkins J, Lowry DB, Mamidi S, Sreedasyam A, et al. 2018. The genomic landscape of molecular responses to natural drought stress in *Panicum hallii*. *Nat Commun.* 9:5213.
- Lovell JT, MacQueen AH, Mamidi S, Bonnette J, Jenkins J, et al. 2021. Genomic mechanisms of climate adaptation in polyploid bioenergy switchgrass. *Nature.* 590:438–444.
- Lyons E, Pedersen B, Kane J, Alam M, Ming R, et al. 2008. Finding and comparing syntenic regions among Arabidopsis and the outgroups papaya, poplar, and grape: CoGe with rosids. *Plant Physiol.* 148:1772–1781.
- Mamidi S, Healey A, Huang P, Grimwood J, Jenkins J, et al. 2020. A genome resource for green millet *Setaria viridis* enables discovery of agronomically valuable loci. *Nat Biotechnol.* 38:1203–1210.
- O'Brien KP, Remm M, Sonnhammer ELL. 2005. Inparanoid: a comprehensive database of eukaryotic orthologs. *Nucleic Acids Res.* 33: D476–D480.
- One Thousand Plant Transcriptomes Initiative. 2019. One thousand plant transcriptomes and the phylogenomics of green plants. *Nature.* 574: 679–685.
- Paterson AH, Wendel JF, Gundlach H, Guo H, Jenkins J, et al. 2012. Repeated polyploidization of *Gossypium* genomes and the evolution of spinnable cotton fibres. *Nature.* 492:423–427.
- Saski CA, Scheffler BE, Hulse-Kemp AM, Liu B, Song Q, et al. 2017. Sub genome anchored physical frameworks of the allotetraploid Upland cotton (*Gossypium hirsutum* L.) genome, and an approach toward reference-grade assemblies of polyploids. *Sci Rep.* 7: 15274.
- Trachana K, Larsson TA, Powell S, Chen W-H, Doerks T, et al. 2011. Orthology prediction methods: a quality assessment using curated protein families. *Bioessays.* 33:769–780.
- Udall JA, Long E, Ramaraj T, Conover JL, Yuan D, et al. 2019. The genome sequence of *Gossypioides kirkii* illustrates a descending dysploidy in plants. *Front Plant Sci.* 10:1541.
- Van de Peer Y, Mizrachi E, Marchal K. 2017. The evolutionary significance of polyploidy. *Nat Rev Genet.* 18:411–424.
- Wang Y, Tang H, Debarry JD, Tan X, Li J, et al. 2012. MCScanX: a toolkit for detection and evolutionary analysis of gene synteny and collinearity. *Nucleic Acids Res.* 40:e49.
- Wendel JF. 2015. The wondrous cycles of polyploidy in plants. *Am J Bot.* 102:1753–1756.
- Yu J, Jung S, Cheng C-H, Ficklin SP, Lee T, et al. 2014. CottonGen: a genomics, genetics and breeding database for cotton research. *Nucleic Acids Res.* 42:D1229–D1236.

Communicating editor: P. L. Morrell