

# Derivation and Validation of a Risk Prediction Model for Vancomycin-Associated Acute Kidney Injury in Chinese Population

This article was published in the following Dove Press journal:  
*Therapeutics and Clinical Risk Management*

Nana Xu<sup>1,2</sup>  
Qiao Zhang<sup>1,2</sup>  
Guolan Wu<sup>1,2</sup>  
Duo Lv<sup>1,2</sup>  
Yunliang Zheng<sup>1,2</sup>

<sup>1</sup>Research Center of Clinical Pharmacy, The First Affiliated Hospital, Zhejiang University School of Medicine, Hangzhou, Zhejiang, People's Republic of China;  
<sup>2</sup>Zhejiang Provincial Key Laboratory for Drug Evaluation and Clinical Research, The First Affiliated Hospital, Zhejiang University School of Medicine, Hangzhou, Zhejiang, People's Republic of China

**Background:** Vancomycin is the standard therapy for methicillin-resistant *Staphylococcus aureus* (MRSA) infection; however, nephrotoxicity happened with a high incidence of 15%~40%. Weighting the risk before receiving vancomycin treatment facilitates timely prevention of nephrotoxicity, but no standardized strategy exists for this purpose.

**Methods:** A retrospective cohort study was performed. A total of 524 hospitalized patients treated with vancomycin were included in this study. They were divided into derivation cohort (n=341) and externally validation cohort (n=183) according to their admission time. Using univariate and multivariable logistic regression, we identified potential predictors of vancomycin-associated acute kidney injury (AKI) and developed a risk score by plotting nomogram. The predictive performance of this novel risk score was assessed and validated by discrimination and calibration. Besides, the risk score was also compared with existing prediction models according to integrated discrimination index (IDI) and net reclassification index (NRI).

**Results:** The incidence of AKI was 16.1% (55/341) in the derivation cohort and 16.4% (30/183) in the validation cohort. Three factors (vancomycin serum trough concentration, piperacillin/tazobactam and furosemide) were determined as predictors for vancomycin-associated AKI. The established three-item risk score showed a comparable discrimination in both derivation cohort (AUC=0.793, 95% CI: 0.732–0.855) and validation cohort (AUC=0.788, 95% CI: 0.698–0.877). The risk score also demonstrated a good calibration in the derivation cohort ( $\chi^2=6.079$ ,  $P=0.638>0.05$ ) and validation cohort ( $\chi^2=5.665$ ,  $P=0.686>0.05$ ). Compared with prediction by  $C_{\min}$  alone, this risk score significantly improved reclassification accuracy (IDI=0.050, 95% CI: 0.024–0.076,  $P<0.001$ , NRI=0.166, 95% CI: 0.044–0.289,  $P=0.007$ ).

**Conclusion:** The established model in this study is a simplified three-item risk score, which provides a robust tool for the prediction of AKI after receiving vancomycin treatment.

**Keywords:** vancomycin, acute kidney injury, prediction model

## Introduction

Methicillin-resistant *Staphylococcus aureus* (MRSA) has undergone a rapid epidemiologic expansion to become a major cause of hospital and community-acquired infections worldwide.<sup>1</sup> Glycopeptide vancomycin has been the mainstay of treatment for four decades. However, increased nephrotoxicity remains the most common adverse event after vancomycin administration with an average incidence of 15%. And it reaches up to 40% in critically-ill population.<sup>2</sup> Once acute kidney injury (AKI) occurs, vancomycin treatment has to be modified or even

Correspondence: Yunliang Zheng  
The First Affiliated Hospital, Zhejiang University School of Medicine, 79# Qingchun Road, Hangzhou, Zhejiang 310003, People's Republic of China  
Email ylzhang1984@zju.edu.cn

discontinued. Besides, it also leads to greater incidence of end-stage kidney disease, prolonged hospitalization, poorer prognosis and even higher mortality.<sup>3</sup>

Risk factors of vancomycin-associated nephrotoxicity have been extensively studied. Higher vancomycin daily dosage, longer duration of therapy, and elevated plasma concentrations of vancomycin are widely known predisposing factors.<sup>4-7</sup> The most recent guidelines recommended that clinicians should monitor vancomycin nephrotoxicity by calculating the AUC/MIC ratio.<sup>8</sup> Some other conditions have also been proposed as risk factors, like renal dysfunction, admission to ICU and concomitant nephrotoxic agents.<sup>6</sup> For instance, ICU residence increased the incidence of AKI from 9.3% to 13.3%.<sup>6,9</sup> Concurrent piperacillin/tazobactam significantly added the risk of AKI with a hazard ratio of 4.27.<sup>10</sup>

By integrating multiple predisposing factors, risk prediction models can be developed to help clinicians estimate the probability or risk of AKI after vancomycin administration, thus to make informed clinical decisions. As an effective strategy to forecast future event, risk prediction models have been extensively applied to cardiovascular events,<sup>11</sup> type 2 diabetes, diabetic retinopathy,<sup>12</sup> cancer,<sup>13</sup> etc. However, in terms of vancomycin-associated nephrotoxicity, its application is limited.

After comprehensive literature searching, only two prediction models were published for prognosis of vancomycin-associated nephrotoxicity. One was established by logistic regression (LR) and presented as a mathematical formula.<sup>14</sup> It was proposed for elderly patients and could not be applied in general patients. The other model was built by a decision tree (DT) method to evaluate the risk of AKI in Japanese patients.<sup>15,16</sup> DT model is nonparametric and weak in clinical interpretation. Besides, neither of two models were validated externally. A novel model with stronger applicability and generality in Chinese population remains to be explored.

Our study aims to explore potential predisposing factors of vancomycin-associated AKI and establish a risk prediction model in Chinese population. We hope to provide an effective strategy for early recognition and prompt intervention of AKI in patients treated with vancomycin.

## Method

### Study Setting and Design

This was a retrospective cohort study. Following the TRIPOD statement (Transparent Reporting of a multivariable prediction model for Individual Prognosis or Diagnosis) in 2015,<sup>17</sup> the

study was designed for model development and validation. This study was implemented in The First Affiliated Hospital, Zhejiang University School of Medicine. The protocol was approved by the Ethics Committee of The First Affiliated Hospital, Zhejiang University School of Medicine with the approval letter (No.20191540). We strictly conformed to the ethical standard in Declaration of Helsinki during the study. All the information was gathered anonymously and used harmlessly. And the informed consent was exempted by the ethics committee.

### Data Source

All the data in this study were obtained from hospital information system (HIS), including electronic medical record (EMR), laboratory information system (LIS) and nursing information system (NIS). In detail, general information such as age, gender, and clinical features (blood pressure, heart rate and the history of diseases) were derived from admission record in the EMR. Heights and weights were exported from the NIS. Comorbidities were judged from admission and discharge diagnosis recorded in the EMR. Concomitant medications were obtained from the electronic prescription system. Data about laboratory examinations, like serum concentration of vancomycin, serum creatinine (Scr) and others, originated from the LIS. Two researchers (Xu and Zhang) were trained to gather the information, which were firstly collected by one researcher (Xu) and then checked by the other (Zhang).

### Study Population

Patients who were admitted to The First Affiliated Hospital, Zhejiang University School of Medicine from January 1, 2016 to October 11, 2019 and received vancomycin treatment for  $\geq 48$ h during the period of hospitalization were eligible. Patients were excluded 1) if their ages were below 18; 2) if they already suffered from renal diseases at the start of vancomycin, because renal diseases interfered the judgment of the main outcome-AKI. And renal diseases were diagnosed by clinicians according to International Classification of Diseases-10 (ICD-10), including uremia or dialysis, kidney transplant, kidney failure, chronic kidney disease and acute renal injury and they were detailed in the [Appendix](#); 3) if estimated creatinine clearance  $\leq 45$ mL/min, which was calculated by Cock Croft-Gault formula according to baseline Scr, age, weight and sex; 4) if patients already had a rising Scr before or right at the time of vancomycin start; 5) if vancomycin was orally instead of

intravenously administrated; (6) if important information, like vancomycin trough concentration, baseline and subsequent Scr were missing.

Patients in this study were divided into two cohorts according to their admission time: derivation cohort (from January 1, 2016 to December 31, 2018) and validation cohort (from January 1, 2019 to October 11, 2019). The Model was established in the derivation cohort and independently validated in the validation cohort. The inclusion and exclusion criteria were the same in the two cohorts. And data were also collected by the same investigators, typically using the same predictors and outcome definitions and measurements. Details about patients' selection are shown in Figure 1.

## Study Outcomes

The primary outcome of this study was the occurrence of AKI during the period of vancomycin treatment. And AKI was defined according to Kidney Disease Improving Global Outcome (KDIGO) Clinical Practice Guidelines.<sup>18</sup> That is, patients were diagnosed with AKI if the Scr increased by

26.5 $\mu$ mol/L within 48h, or Scr rose to 1.5 times of the baseline value within 7 days. Additionally, the AKI criterion judged by urine volume in the KDIGO guideline was omitted, because urine volume per hour could not be obtained. Baseline Scr in this study was measured the day before vancomycin administration. If it was not available, the one measured 3 days before administration served as a substitute.

## Variable Classification and Definition

We collected five types of variables for variables screening: demographic information, vancomycin regimen, comorbidities, concomitant medications and laboratory tests, which could put some effect on vancomycin-associated AKI. Among these, variables associated with vancomycin therapy like dosage, frequency and duration were collected and daily dosage was calculated according to dosage and frequency. If dosage was adjusted during the treatment, daily dosage was averaged for analysis.

Patients' comorbidities were diagnosed by the clinicians based on ICD-10 and recorded in the EMR.

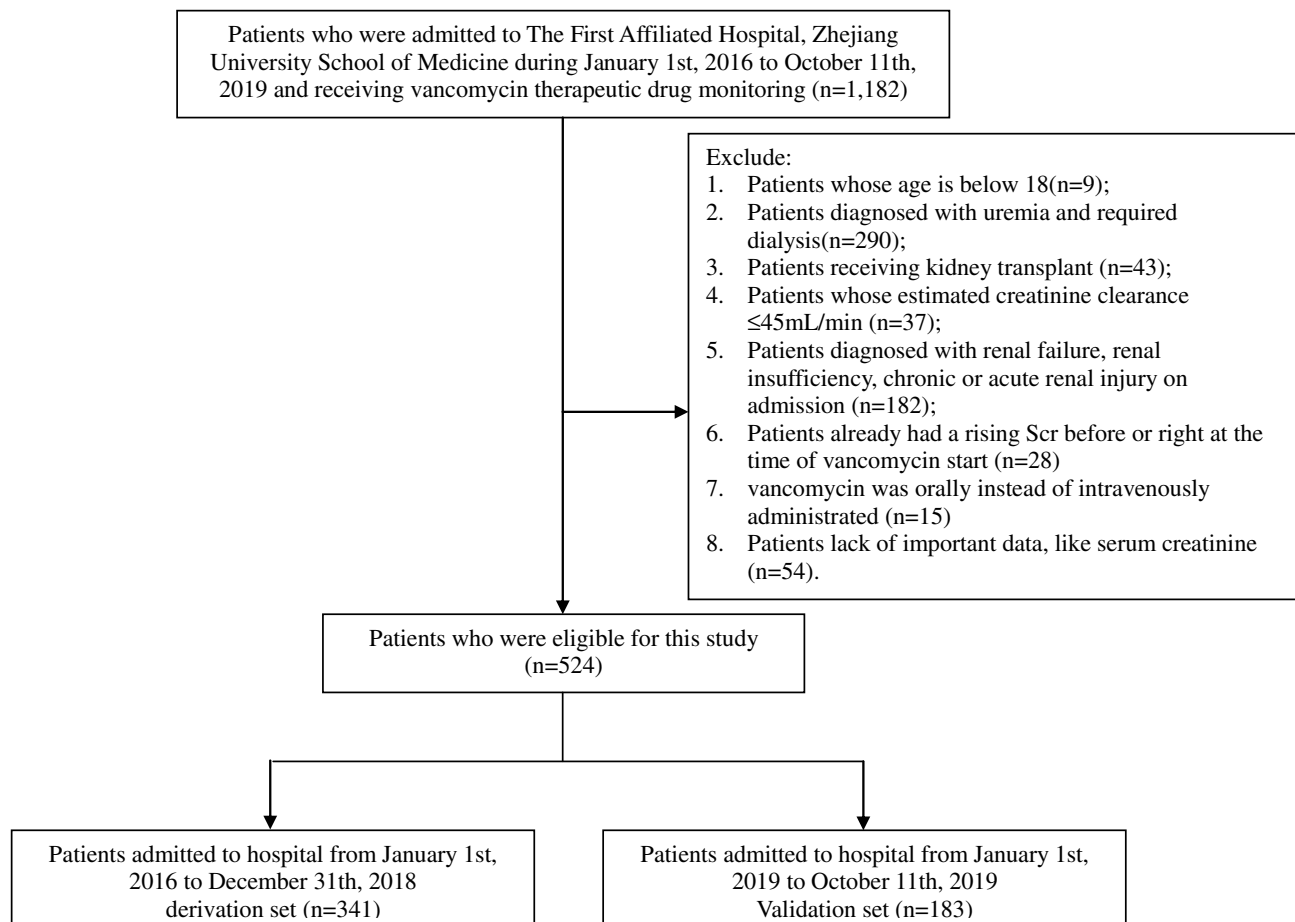


Figure 1 Flowing chart of population enrollment.

Comorbidities analyzed in this study included hypertension, diabetes, heart failure, arrhythmia, atrial fibrillation, coronary atherosclerotic heart disease, hepatic insufficiency, viral hepatitis, lung disease, shock, trauma and cancer. And other comorbidities with a lower occurrence ( $\leq 5\%$ ) were excluded for analysis.

As for concomitant medications, some well-known nephrotoxic agents, such as aminoglycosides, non-steroidal-anti-inflammatory drugs (NSAIDs), diuretics, antiviral agents and contrast agents were recorded if they were used together with vancomycin. Other concurrent drugs like antibiotics,  $\beta$ -blockers, angiotensin-II receptor antagonists, immunosuppressive agents and antifungal agents were also collected. Co-medications were not included for analysis if less than 5% patients took these agents. All the agents were prescribed in electronic prescription system and taken under the supervision of a nurse. These agents were classified according to Drug Classification Code of the First Affiliated Hospital, Zhejiang University School of Medicine, which was compiled referring to Anatomical Therapeutic Chemical (ATC) classification system. Details about drugs and classifications in this study were shown in [Appendix](#).

Baseline laboratory tests referred to the values measured the day before vancomycin administration, including Scr, vancomycin serum concentrations, total protein, albumin, aspartate aminotransferase (AST), alanine aminotransferase (ALT), hemoglobin and so on ([Appendix](#)). All the blood samples were collected by nurse according to medical orders and measured by the laboratory in one day. As for vancomycin trough concentrations, samples were collected in half an hour before vancomycin administration. On the condition that serum trough concentrations were measured for several days, only the initial one was selected for analysis. As all the patients were given vancomycin by intermittent medication, trough concentration measurement for continuous medication was not considered.

## Statistical Analysis

We use IBM SPSS<sup>®</sup> Statistics, version 22.0 and R version 3.6.2 to perform the statistical analysis and model development. Numerical variables were presented with mean and standard deviation (SD). Comparison between two groups was performed via Student's *t*-test or Wilcoxon rank-sum test. Categorical variables were described by frequency and percentage. Comparison was performed via Chi-square or Fisher exact test. Difference was considered significant if *P* value was below 0.05.

In the derivation set, in total of 94 variables were screened via univariate regression. If  $P < 0.1$ , this variable would progress to multivariable logistic regression with backward method (in 0.05 and out 0.10). And independent predictors were determined when  $P < 0.05$  in multivariable regression. Then, they were integrated to be an initial risk prediction model. This initial model was presented as a mathematical formula:

$$\text{logit}(P) = \beta + \beta_1 x_1 + \beta_2 x_2 + \dots + \beta_n x_n$$

*P* represents the probability of AKI occurrence.  $X_1, X_2, \dots, X_n$  represent predictive variables we have selected.  $\beta_1, \beta_2, \dots, \beta_n$  refer to regression coefficients of corresponding variables.

Besides, we plotted a nomogram with R to visualize our initial model. By the nomogram, each predictor value was assigned one point from 0 to 100 based on the magnitude of association of each predictor with AKI. Then we added the points of three predictors together to calculate the total point or risk score, which corresponded to the probability of the outcome. And all the patients were stratified into 4 groups by quartile of risk scores: very low (score  $< 25$ ), low (score 25–50), moderate (score 50–75), and high risk (score  $> 75$ ). The actual incidence of AKI in the four groups stratified by risk score quartile was compared in both internal and external cohort.

The established model was internally validated by bootstrap method ( $N_{\text{samples}} = 1000$ ) and externally in the validation cohort. Discrimination and calibration were reported to evaluate model predictive performance. And discrimination indicated the ability of a model to distinguish patients who would develop AKI from those who would not, which was a comprehensive reflection of sensitivity and specificity. Discrimination was measured by the area under the receiver operating characteristic (ROC) curve (AUC). AUC ranged from 0 to 1, and the higher AUC, the better discrimination. Besides, sensitivity and specificity at the optimal cutoff point with a maximum Youden's index (Youden's index = sensitivity + specificity - 1)<sup>19</sup> were also reported. Model calibration demonstrated the consistency between the observed incidences and the predicted risks. Calibration was measured by two methods: calibration plot and Hosmer-Lemeshow goodness-of-fit test with a higher *P* value indicating a better calibration.

Our model was compared with the published model,<sup>15</sup> prediction by  $C_{\text{min}}$  alone and other models. Net reclassification improvement (IRI), integrated discrimination improvement (IDI) and Akaike Information Criterion

(AIC) were calculated to quantitatively compare predictive accuracy with  $P<0.05$  showing a significant improvement or a lower AIC showing a priority of model selection.

As for missing data, glomerular filtration rate (GFR) was missed for about 54.9%. This variable was removed from our analysis. Height and weight were missed for about 29.3% and 28.3%, separately. They were filled with multiple imputation method. Systolic blood pressure (SBP), diastolic blood pressure (DBP) and HR (heart rate) were missed for less than 0.4%. ALT was missing for about 0.6%. Drinking and smoking were missing for about 0.4%. Those data with missing rates below 1% were filled with average. Especially, some important data, like vancomycin trough concentration, baseline and subsequent Scr were complete because individuals with missing data were excluded. Besides, 53% patients had their Scr measured daily, 94.9% patients had Scr measured at least four times and all the patients had at least twice during vancomycin treatment.

## Results

### Baseline Characteristics and Outcomes

Three hundred and forty-one patients were included in the derivation cohort and AKI occurred in 55 (16.1%) patients. In the external validation cohort, 183 patients were enrolled and the incidence of AKI was 16.4% (30/183). As is shown in Table 1, baseline characteristics in the two cohorts including age, sex, BMI and blood pressure and so on, were mostly similar, while patients from neurosurgery ward accounted for the largest proportion in derivation cohort (31.8%) and patients in validation cohort mainly came from hepatobiliary pancreatic surgery ward (46.4%). Therefore, percentage of patients suffering from liver diseases in the validation cohort was higher than that in the derivation cohort (57.9% vs. 23.0%,  $P<0.001$ ).

### AKI Predictors and Model Establishment

Twelve potential predictors with  $P<0.1$  were selected by univariate analysis and listed in Table S1. According to multivariable logistic regression, 4 factors were found to be independently associated with the AKI outcome:  $C_{\min}$ , concomitant piperacillin/tazobactam, furosemide, and dosage adjustment ( $P<0.05$ ). And three variables were eventually integrated to predict the occurrence of AKI in the final model (shown in Table 2). Vancomycin dosage adjustment (OR=2.286, 95% CI: 1.169–4.470,  $P=0.016$ ) was excluded

**Table 1** Baseline Characteristics in the Derivation and Validation Cohorts

Variables	Derivation Set (n=341)	Validation Set (n=183)	P value
<b>Basic information</b>			
Age (y)	56.3±14.5	53.8±14.3	0.065
Female, n(%)	122 (35.6)	58 (31.7)	0.732
Height (cm)	164.9±7.8	166.1±7.7	0.173
Weight (kg)	61.3±11.7	64.4±11.5	0.015
BMI(kg/m <sup>2</sup> )	22.6±3.7	23.2±3.4	0.081
Smoking, n(%)	122 (35.6)	71 (39.7)	0.357
Drinking, n(%)	92 (26.8)	52 (28.9)	0.615
SBP (mmHg)	129±23	127±22	0.496
DBP (mmHg)	75±15	75±12	0.803
Heart rate (bet/min)	90±20	83±16	<0.001
Allergy, n(%)	32 (9.3)	20 (10.9)	0.573
<b>Comorbidities</b>			
Hypertension, n(%)	108 (31.7)	54 (29.5)	0.592
Diabetes, n(%)	54 (15.7)	23 (12.5)	0.326
Heart disease, n(%)	83 (24.2)	42 (23.0)	0.749
Heart failure, n(%)	22 (6.5)	10 (5.5)	0.664
Atrial fibrillation, n(%)	20 (5.8)	11 (6.0)	0.933
Arrhythmia, n(%)	27 (7.9)	17 (9.3)	0.576
Coronary atherosclerotic heart disease, n(%)	21 (6.1)	7 (3.8)	0.264
Liver disease, n(%)	79 (23.0)	106 (57.9)	<0.001
Hepatitis, n(%)	42 (12.2)	64 (35.0)	<0.001
Hepatic insufficiency, n(%)	30 (8.7)	50 (27.3)	<0.001
Cardiovascular disease, n(%)	107 (31.2)	56 (30.6)	0.888
Cerevascular disease, n(%)	92 (26.8)	27 (14.8)	0.002
Perivascular disease, n(%)	34 (9.9)	36 (19.7)	0.002
Lung disease, n(%)	158 (46.1)	89 (48.6)	0.574
Anemia, n(%)	15 (4.4)	14 (7.7)	0.117
Shock, n(%)	29 (8.5)	15 (8.2)	0.919
Trauma, n(%)	76 (22.2)	22 (12.0)	0.004
Cancer, n(%)	44 (12.8)	42 (23.0)	0.003
<b>Department</b>			
Neurosurgery ward, n(%)	109 (31.8)	36 (19.7)	<0.001
Intensive care unit, n(%)	98 (28.6)	28 (15.3)	
Infection ward, n(%)	34 (9.9)	7 (3.8)	
Cardiothoracic surgery ward, n(%)	26 (7.6)	14 (7.7)	
Hepatobiliary pancreatic surgery ward, n(%)	21 (6.1)	85 (46.4)	
Orthopedics ward, n(%)	16 (4.7)	6 (3.3)	
Other surgery ward, n(%)	10 (2.9)	5 (2.7)	
Others, n(%)	29 (8.5)	2 (1.1)	
Hospital stay(d)	35±33	32±23	0.146
ICU, n(%)	125 (36.4)	29 (15.8%)	<0.001
<b>Operation</b>			
Cardiac surgery, n(%)	41 (12)	18 (9.8)	
Non-cardiac surgery, n(%)	190 (55.4)	70 (38.3)	

(Continued)



**Table I (Continued).**

Variables	Derivation Set (n=341)	Validation Set (n=183)	P value
Non-surgery, n(%)	112 (32.7)	95 (51.9)	
Vancomycin treatment			
Duration (d)	10.7±7.0	9.3±5.7	0.020
Daily dosage (mg/d)	1813±379	1776±350	0.277
Dosage adjustment, n(%)	99 (29.0)	53 (29.0)	0.963
Trough concentration			
C <sub>min</sub> (ug/mL)	11.4±7.2	11.8±8.7	0.599
C <sub>min</sub> >10ug/mL, n(%)	168 (49.0)	88 (48.1)	0.845
C <sub>min</sub> >15ug/mL, n(%)	77 (22.4)	45 (24.6)	0.579
C <sub>min</sub> >20ug/mL, n(%)	37 (10.8)	21 (11.5)	0.810
Combined medication			
Daptomycin, n(%)	11 (3.8)	8 (4.4)	0.746
Tyggacil, n(%)	41 (12)	13 (7.1)	0.081
Teicoplanin, n(%)	9 (2.6)	23 (12.6)	<0.001
Linezolid, n(%)	82 (23.9)	38 (20.8)	0.413
Penicillins, n(%)	9 (2.6)	17 (9.3)	0.001
Cephalosporin, n(%)	99 (28.9)	34 (18.6)	0.010
Carbapenems, n(%)	125 (36.4)	59 (32.2)	0.336
Imipenem cilastatin, n(%)	54 (15.7)	17 (9.3)	0.039
Cefoperazone sulbactam, n(%)	104 (30.3)	108 (59.0)	<0.001
Piperacillin tazobactam, n(%)	114 (33.4)	45 (24.6)	0.040
Fluoroquinolones, n(%)	47 (13.7)	25 (13.7)	0.989
Aminoglycosides, n(%)	11 (3.2)	8 (4.4)	0.495
Metromidazole, n(%)	6 (1.7)	5 (2.7)	0.453
Erythromycin, n(%)	12 (3.5)	5 (2.7)	0.636
Furosemide, n(%)	201 (58.9)	129 (70.5)	0.009
Spirolactone, n(%)	40 (11.7)	30 (16.4)	0.128
Hydrochlorothiazide, n(%)	20 (5.9)	23 (12.6)	0.011
β-blockers, n(%)	37 (10.8)	21 (11.5)	0.810
Angiotensin II receptor antagonists, n(%)	11 (3.2)	13 (7.1)	0.041
NSAID, n(%)	118 (34.6)	75 (41.0)	0.136
Contrast, n(%)	55 (16)	54 (29.5)	<0.001
Anti-viral, n(%)	32 (9.3)	74 (40.4)	<0.001
Anti-fungal, n(%)	80 (23.3)	96 (52.5)	<0.001
Immunosuppressive agents, n(%)	15 (4.4)	76 (41.5)	<0.001
Laboratory test			
Total protein (g/L)	59.1±10.4	56.2±9.5	0.002
Albumin(g/L)	34.6±6.6	34.4±5.6	0.756
AST(U/L)	43.7±78.9	197.1±566.6	<0.001
ALT(U/L)	52.1±92.7	293.4±1816.6	0.077
Creatinine(μmol/L)	67.2±24.4	64.9±22.1	0.287
Fasting glucose(mmol/L)	7.9±3.6	8.3±3.2	0.146
Leukocyte(10E9/L)	10.6±5.8	10.3±6.5	0.567
Neutrophil(10E9/L)	9.1±6.9	8.6±6.1	0.466
Lymphocyte(10E9/L)	1.06±0.81	0.86±0.69	0.006
Monocyte(10E9/L)	0.62±0.52	0.61±0.48	0.830

(Continued)

**Table I (Continued).**

Variables	Derivation Set (n=341)	Validation Set (n=183)	P value
Platelet(10E9/L)	179.2±104.2	136.3±113.7	<0.001
RBC(10E12/L)	3.68±0.87	3.04±0.79	<0.001
Hemoglobin (g/L)	110.7±26.4	92.0±24.0	<0.001
AKI, n(%)	55 (16.1)	30 (16.4)	0.760

**Abbreviations:** ICU, intensive care unit; NSAID, nonsteroidal antiinflammatory drugs; ALT, alanine aminotransferase; AST, aspartate aminotransferase; RBC, red blood cell; AKI, acute kidney injury.

from our prediction model, because dosage adjustment might occur after AKI.

The final logistic regression model was exhibited as following:

$$\text{Logit}(P) = -4.412 + 0.119 * C_{\min} + 0.768 * \text{Piperacillin tazobactam} + 1.284 * \text{Furosemide}$$

Additionally, an alternative model was built by adding two variables (cardiac surgery and baseline Scr) into the three-item model, considering that these two variables were recognized as important risk factors for AKI.<sup>20,21</sup>

The alternative model was shown below:

$$\text{Logit}(P) = -4.835 + 0.118 * C_{\min} + 1.260 * \text{Furosemide} + 0.807 * \text{Piperacillin tazobactam} + 0.006 * \text{Baseline Scr} + 0.133 * \text{Cardiac surgery}$$

We transformed the multivariable logistic regression model into a three-item AKI risk score (C<sub>min</sub>, furosemide and piperacillin/tazobactam) by assigning points to each predictive variable based on a nomogram (Figure 2). According to the nomogram, separate point was assigned when dichotomous variables (furosemide and piperacillin/tazobactam) equal 1 or 0. And one point was assigned to each value of the continuous variable (C<sub>min</sub>) from 0 to 60μg/mL. By adding points of three predictors, we calculated the total point (risk score) for each patient. According to the risk score, all the patients in the derivation cohort were separated into 10 groups by decile. The frequency and incidence of AKI in each group were calculated and shown in Figure 2, demonstrating that the incidence of AKI increased with the growth of risk score. Similarly, the nomogram for the alternative model was presented in Figure S1.

### Model Evaluation

Our model showed a comparable discrimination in both derivation and validation cohort. AUC of our model was

**Table 2** Predictors Included in the Multivariable Logistic Regression Model

Predictors	$\beta$ Coefficient	OR (95% CI)	P value
C <sub>min</sub>	0.119	1.126 (1.079–1.176)	<0.001
Piperacillin/ tazobactam	0.768	2.156 (1.116–4.164)	0.022
Furosemide	1.283	3.609 (1.630–7.991)	0.002

**Abbreviations:** OR, odds ratio; CI, confidence interval.

0.793 (95% CI: 0.732–0.855) (Figure 3), and sensitivity and specificity were respectively 83.6% and 62.6% at the optimal cutoff point with a maximum of Youden's index of 0.462 in the derivation cohort. AUC in internal and external validation were 0.786 (95% CI: 0.783–0.788) and 0.788 (95% CI: 0.698–0.877), respectively (Figure 3). Besides, sensitivity and specificity were 80.0% and 60.1% in the validation cohort.

The established model also indicated a good calibration according to goodness-of-fit test and calibration plot. In the derivation cohort, and in internal and external validation, goodness-of-fit test showed  $\chi^2=6.079$  ( $P=0.638>0.05$ ),  $\chi^2=5.074$  ( $P=0.742>0.05$ ) and  $\chi^2=5.665$  ( $P=0.686>0.05$ ), respectively, suggesting a consistency between the predicted probabilities and the actually observed incidences. This result was confirmed by calibration plot (Figure 4).

All the patients in the derivation and validation cohorts were stratified into four groups by risk score quartiles: very low risk (score<25), low risk (score 25–50), moderate risk (score 50–75) and high risk (score>75). Actual incidence of vancomycin-associated AKI in each group was presented in Figure 5. It showed that predicted risk was consistent with the actual incidence of AKI in both derivation and validation cohorts. However, in moderate and high-risk groups, actual incidences of AKI in the validation cohort were a bit lower than that in the derivation cohort.

## Comparison with Existing Models

Our model was compared with the alternative model, Imai's model and prediction by C<sub>min</sub> alone in terms of NRI, IDI and AIC. In the derivation cohort, by referring to prediction by C<sub>min</sub> alone, NRIs (95% CIs) of our model, the alternative model and Imai's model were 0.166 (0.044–0.289), 0.155 (0.021–0.288) and 0.052 (–0.060–0.165), separately. And I(95% CIs) were 0.050 (0.024–0.076), 0.048 (0.019–0.077) and 0.022 (–0.022–0.066), separately. As for AIC, they were calculated to be 252.614, 255.429, 263.052 and 267.494 by our model, the alternative model, Imai's model and

prediction by C<sub>min</sub> alone. The results in the validation cohort were similar with those in the derivation cohort (see in Table 3), suggesting that our three-item model showed the best predictive accuracy of AKI in both derivation and validation cohort.

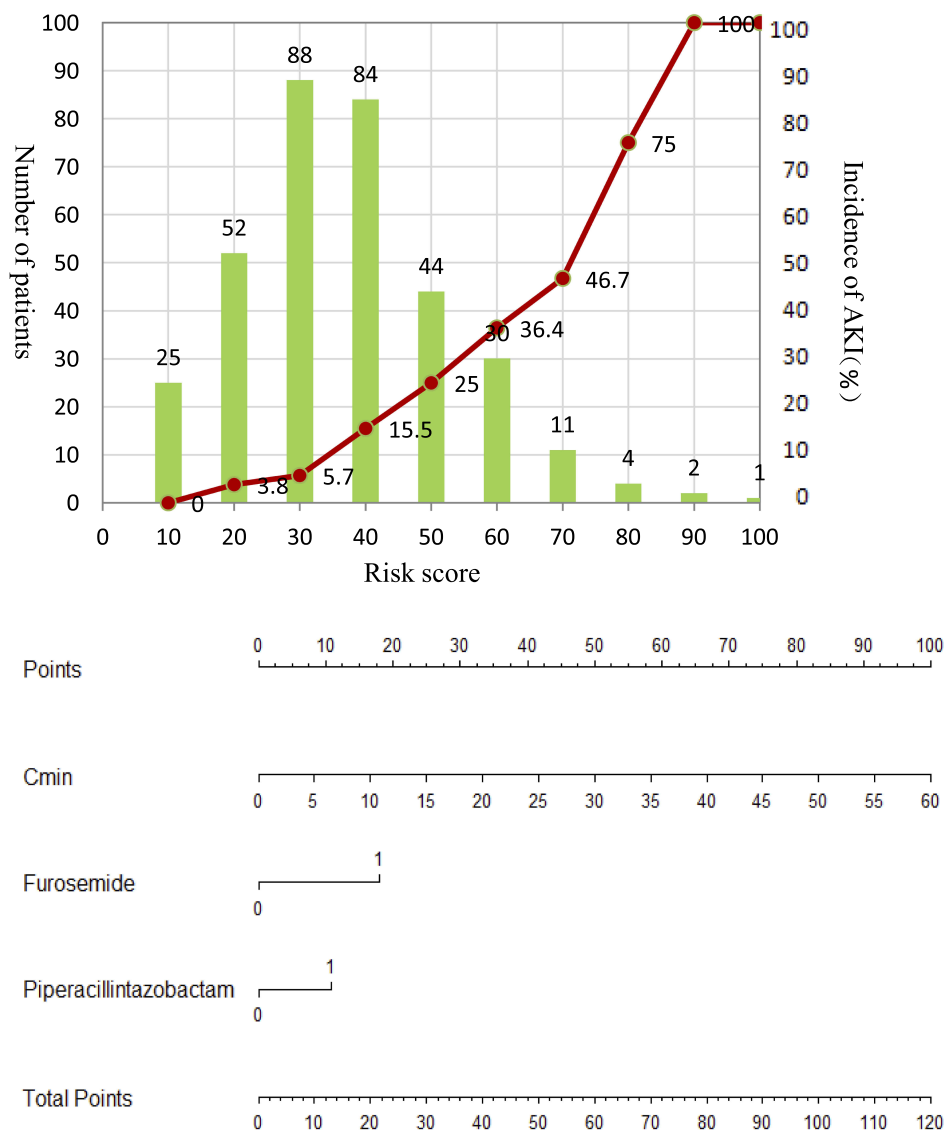
## Discussion

In this study, we confirmed the role of serum trough concentration and concomitant piperacillin/tazobactam in vancomycin-associated AKI, which had been previously reported, and featured the potential causality of concomitant furosemide with AKI. Then we established a risk score by integrating these three predictors by multivariable logistic regression and nomogram. Finally, this novel risk score was internally and externally validated and was compared with the existing models. Discussions were made from four aspects: outcomes and predictors, comparison with the existing models, clinical applications and strengths and limitations.

## Outcomes and Predictors

Establishing the causality between vancomycin and AKI is challenging. In this study, we confirmed their association mainly according to time sequence. That is, AKIs that happened before vancomycin administration were excluded. Besides, possible confounding factors like cardiac surgery, combination of some other nephrotoxic drugs, ICU admission and so on were also taken full consideration to determine the role of vancomycin in AKI.

In our risk score, vancomycin serum trough concentration acted as an essential predictor for AKI, which has been stated in many studies. A study from Dong reported that serum trough level of vancomycin was an independent factor for the development of nephrotoxicity.<sup>22</sup> Burgess et al found that higher trough concentration significantly increased the risk of vancomycin-associated nephrotoxicity.<sup>23</sup> However, the causality between high vancomycin level and AKI remained to be further revealed. Due to the fact that serum vancomycin was mainly excreted by kidney, renal injury from any reasons could lead to a high vancomycin level. In turn, vancomycin accumulation resulted in aggravating kidney injury.<sup>24</sup> Due to the interaction of vancomycin accumulation and kidney injury,<sup>2</sup> steady trough concentration may change, especially increase afterwards. As a result, initial vancomycin trough concentration was selected as a predictor in this study. Besides, a model developed based on an earlier serum concentration could contribute to prompt interventions.



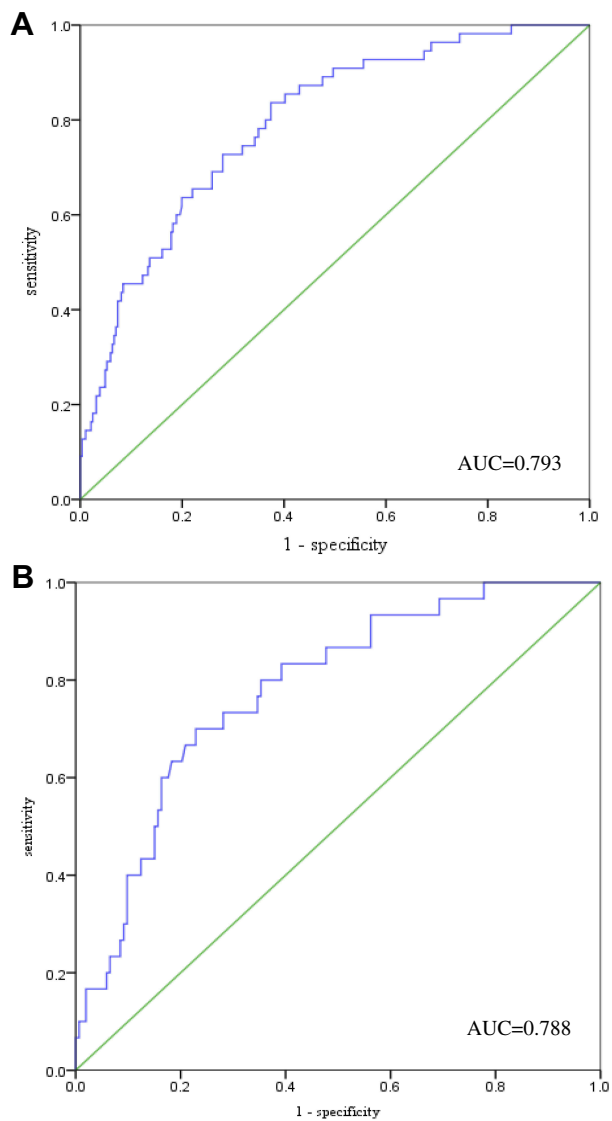
**Figure 2** The AKI risk score nomogram for clinical application and AKI incidence by score decile.

Our study also showed that concurrent furosemide increased the risk of vancomycin-associated AKI (OR=3.609, 95% CI: 1.630–7.991). According to Huang et al,<sup>25</sup> the combination of diuretics (furosemide ≥40 mg/d) and vancomycin was an independent risk factor of nephrotoxicity in elderly critically-ill patients. Although some studies hold that diuretic was also a kind of nephrotoxic agents, co-medication of vancomycin and furosemide remained common in clinical practice. As showing in the present study, 63.3% of patients in the derivation cohort took furosemide along with vancomycin and the percentage

was even higher in the validation cohort (70.5%). Therefore, our study reminded that the use of furosemide should be cautious when combined with vancomycin in case of AKI.

A lot of studies reported that piperacillin/tazobactam had an additive effect on vancomycin-associated nephrotoxicity.<sup>23,26–29</sup> Consistent with this result, our study further confirmed the association between AKI and concurrent use of vancomycin and piperacillin/tazobactam. And we integrated it into our risk score model for vancomycin-associated AKI to achieve an improved model performance, compared with prediction by C<sub>min</sub> alone.

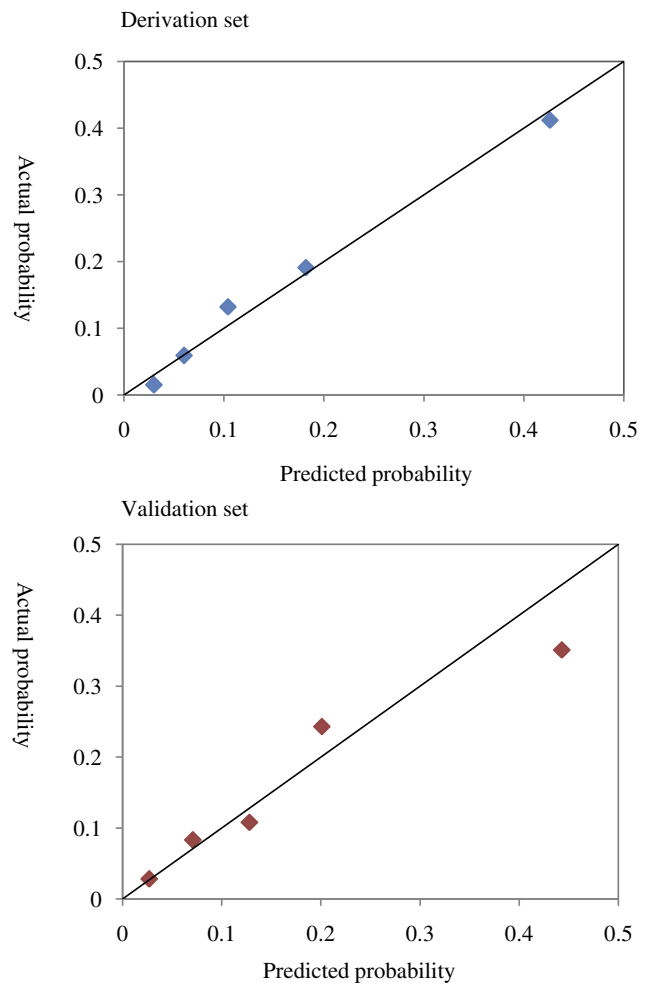




**Figure 3** The ROC curve in the derivation (A) and external validation sets (B).

## Comparison with Existing Models

After comprehensive literature retrieval, only two prediction models about vancomycin-associated nephrotoxicity have been published. One model by Pan in 2017 was proposed for elderly patients who received vancomycin therapy.<sup>14</sup> This model was not validated in general patients, and could not be applied extensively. Another model by Imai in 2019 was a decision tree model, which was developed in Japanese patients.<sup>15,16</sup> And only categorical variables were utilized in DT algorithm. In addition, neither of the two models was validated by independent external data, though the predictive performance proved good in the training data. Different from these two models, our risk score was developed in Chinese adult patients and validated in an

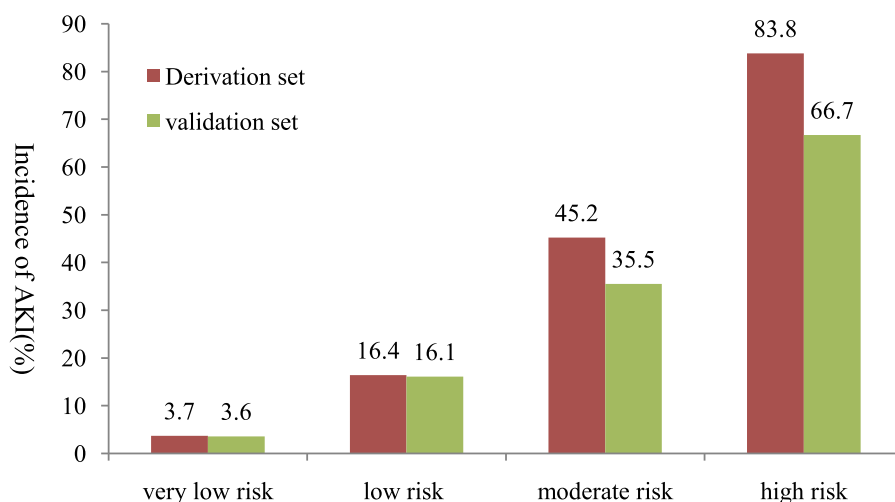


**Figure 4** Calibration plot in the derivation and validation sets.

external data. The predictive accuracy of our model was improved according to the calculated NRI, IDI and AIC, compared with Imai's model and prediction by  $C_{\min}$  alone.

## Clinical Application of the Risk Score

Our risk score predicted the occurrence of vancomycin-associated AKI by integrating three variables:  $C_{\min}$ , furosemide and piperacillin/tazobactam. According to our risk score, when  $C_{\min}$  of vancomycin was above 45 $\mu\text{g}/\text{mL}$  or 30 $\mu\text{g}/\text{mL}$ , the risk of AKI was classified to be high (average probability of 75%) or moderate (average probability of 40%), no matter furosemide and/or piperacillin/tazobactam were combined or not. Based on our risk score, when  $C_{\min}$  was 10–20 $\mu\text{g}/\text{mL}$ , the risk of AKI would still be high if furosemide and piperacillin/tazobactam were used together, though  $C_{\min}$  between 10 to 20 $\mu\text{g}/\text{mL}$  was widely recommended in clinical practice.<sup>7</sup> But the risk would be reduced to low and very low if none of the two agents were taken.



Stratification	Very low risk (score<25)	Low risk (score 25-50)	Moderate risk (score 50-75)	High risk (score≥75)
Derivation set, n/N (%)	5/134 (3.7)	26/159 (16.4)	19/42 (45.2)	5/6 (83.8)
Validation set, n/N (%)	2/56 (3.6)	15/93 (16.1)	11/31 (35.5)	2/3 (66.7)

**Figure 5** Incidence of AKI after treatment with vancomycin in both derivation and validation sets stratified by score quartiles: score <25 (very low risk), score 25–50 quartile (low risk), score 50–75 (moderate risk), and score ≥75 (high risk).

Thus, co-medication of these two agents should be avoided when vancomycin had to be administered. In turn, if furosemide and/or piperacillin/tazobactam were necessary in clinical practice, a suggestion about  $C_{min}$  could also be made by our risk score.

Clinicians could make early recognition and prompt intervention about vancomycin-associated AKI if the risk was

calculated to be high by our risk score. For example, some antioxidants and renal protectants could be used in advance to prevent the occurrence or aggravation of vancomycin-associated AKI. But whether the routine use of the AKI risk score in the hospitalized patients substantially attenuates AKI risk or even improves patients outcome by better decision making remains to be prospectively ascertained.

**Table 3** Discriminative, Reclassification Ability and AIC of Our Established Risk Score in the Derivation and Validation Cohort in Comparison with Existing AKI Prediction Models in Patients Treated with Vancomycin

	AUC(95% CI)	AIC	NRI		IDI	
			Index(95% CI)	P value	Index(95% CI)	P value
<b>Derivation set</b>						
Our model	0.793(0.732–0.855)	252.614	0.166(0.044–0.289)	0.007	0.050(0.024–0.076)	<0.001
Alternative model	0.798(0.738–0.858)	255.429	0.155(0.021–0.288)	0.023	0.048(0.019–0.077)	0.001
Imai’s model	0.770(0.702–0.838)	263.052	0.052(–0.060–0.165)	0.362	0.022(–0.022–0.066)	0.328
$C_{min}$	0.733(0.654–0.812)	267.494	Ref	Ref	Ref	Ref
<b>Validation set</b>						
Our model	0.788(0.698–0.877)	\	0.161(0.008–0.314)	0.040	0.144 (0.066–0.222)	<0.001
Alternative model	0.786(0.701–0.870)	\	0.134(–0.008–0.276)	0.065	0.048(0.026–0.071)	<0.001
Imai’s model	0.742(0.644–0.839)	\	0.073(–0.001–0.146)	0.053	0.012(–0.051–0.076)	0.708
$C_{min}$	0.739(0.645–0.833)	\	Ref	Ref	Ref	Ref

**Abbreviations:** NRI, net reclassification improvement; IDI, integrated discrimination improvement; AIC, Akaike Information Criterion; AUC, area under curve; CI, confidence interval.

## Strengths and Limitations

Our study had a number of strengths. We derived a simplified risk score with only three variables which were easily available in patients receiving vancomycin treatment. Compared with mathematical formula or non-parametric DT model, our risk score achieved better application and stronger interpretability in aiding decision making on AKI prevention for clinicians. At variance with previous model designed to predict vancomycin-associated AKI, our model was firstly externally validated and showed comparable predictive accuracy compared with that in the training data.

However, some limitations also existed in our study. Firstly, the discrimination of our risk score just ranged from moderate to good. And this was retrospective study, and some significant predictors, like cystatin and genetic factors, were not available to improve model predictive accuracy. Besides, the role of furosemide dosage was not further illuminated, though concomitant furosemide proved to be an important risk factor. Furthermore, our study excluded patients with a preexisting kidney injury, given that abnormal renal function might influence the determination of AKI outcome. But prediction for AKI risk would be more desirable in those patients. Limited by this, our data failed to indicate the association between baseline kidney function and AKI. Considering these shortcomings, further studies focusing on a more general population, including those with renal dysfunction, were still a matter of urgency. Whether or not our risk score applied to AKI prediction in those patients with renal diseases remained to be revealed. Besides, a well-designed prospective study was warranted to confirm the effect of furosemide on vancomycin-associated AKI, especially the role of furosemide dosage.

## Conclusion

In conclusion, we developed a simple, accurate and robust risk score model to predict the probability of vancomycin-associated AKI in Chinese patients. This risk score could help clinicians make informed decision about co-medication and dosage adjustment of vancomycin to reduce the risk of AKI.

## Acknowledgments

We would like to thank our co-worker Youlei Wang for the instructive suggestions about the method part. We also

acknowledged to some students, like Tingting Pan and Chencheng Xu for the help in data collection.

## Funding

This study was supported by Medical Health Science and Technology Project of Zhejiang Provincial Health Commission [2019RC034], Zhejiang Provincial Natural Science Foundation of China [LY19H280011] and National Natural Science Foundation of China [81703615].

## Disclosure

All authors declared no potential conflicts of interest.

## References

1. Boucher H, Miller LG, Razonable RR. Serious infections caused by methicillin-resistant *Staphylococcus aureus*. *Clin Infect Dis*. 2010;51 (Suppl 2):S183–S197. doi:10.1086/653519
2. Elyasi S, Khalili H, Dashti-Khavidaki S, et al. Vancomycin-induced nephrotoxicity: mechanism, incidence, risk factors and special populations. A literature review. *Eur J Clin Pharmacol*. 2012;68:1243–1255. doi:10.1007/s00228-012-1259-9
3. Predecki M, Blacker E, Sadeghi-Alavijeh O, et al. Improving outcomes in patients with acute kidney injury: the impact of hospital based automated AKI alerts. *Postgrad Med J*. 2016;92:9–13. doi:10.1136/postgradmedj-2015-133496
4. Liu C, Bayer A, Cosgrove SE, et al. Clinical practice guidelines by the infectious diseases society of america for the treatment of methicillin-resistant *Staphylococcus aureus* infections in adults and children. *Clin Infect Dis*. 2011;52:e18–e55.
5. Bosso JA, Nappi J, Rudisill C, et al. Relationship between vancomycin trough concentrations and nephrotoxicity: a prospective multi-center trial. *Antimicrob Agents Ch*. 2011;55:5475–5479.
6. Park SJ, Lim NR, Park HJ, et al. Evaluation of risk factors for vancomycin-induced nephrotoxicity. *Int J Clin Pharm*. 2018;40:1328–1334. doi:10.1007/s11096-018-0634-8
7. Ye ZK, Chen YL, Chen K, et al. Therapeutic drug monitoring of vancomycin: a guideline of the division of therapeutic drug monitoring, Chinese pharmacological society. *J Antimicrob Chemother*. 2016;71:3020–3025. doi:10.1093/jac/dkw254
8. Rybak MJ, Le J, Lodise TP, et al. Therapeutic monitoring of vancomycin for serious methicillin-resistant *Staphylococcus aureus* infections: a revised consensus guideline and review by the American Society of Health-System Pharmacists, the infectious Diseases Society of America, the Pediatric Infectious Diseases Society, and the Society of Infectious Diseases Pharmacists. *Am J Health Syst Ph*. 2020;77(11):835–864.
9. Inage S, Nakamura S, Isoe Y, et al. Acute kidney injury in non-intensive care unit and intensive care unit patients treated with vancomycin and piperacillin-tazobactam. *J Nippon Med Sch*. 2019; JNMS-2020\_87.
10. Navalkhele B, Pogue JM, Karino S, et al. Risk of acute kidney injury in patients on concomitant vancomycin and piperacillin-tazobactam compared to those on vancomycin and cefepime. *Clin Infect Dis*. 2017;64:116–123. doi:10.1093/cid/ciw709
11. Costa F, van Klaveren D, James S, et al. Derivation and validation of the predicting bleeding complications in patients undergoing stent implantation and subsequent dual antiplatelet therapy (PRECISE-DAPT) score: a pooled analysis of individual-patient data-sets from clinical trials. *Lancet*. 2017;389:1025–1034. doi:10.1016/S0140-6736(17)30397-5

12. Gholipour K, Asghari-Jafarabadi M, Iezadi S, et al. Modelling the prevalence of diabetes mellitus risk factors based on artificial neural network and multiple regression. *East Mediterr Health J.* 2018;24(08):770–777. doi:10.26719/emhj.18.012
13. Cintolo-Gonzalez JA, Braun D, Blackford AL, et al. Breast cancer risk models: a comprehensive overview of existing models, validation, and clinical applications. *Breast Cancer Res Treat.* 2017;164:263–284. doi:10.1007/s10549-017-4247-z
14. Pan C, Wen A, Li X, et al. Development and validation of a risk prediction model of vancomycin-associated nephrotoxicity in elderly patients: a pilot study. *Clin Transl Sci.* 2019.
15. Imai S, Yamada T, Kasashi K, et al. Construction of a risk prediction model of vancomycin-associated nephrotoxicity to be used at the time of initial therapeutic drug monitoring: a data mining analysis using a decision tree model. *J Eval Clin Pract.* 2019;25:163–170. doi:10.1111/jep.13039
16. Imai S, Yamada T, Kasashi K, et al. Usefulness of a decision tree model for the analysis of adverse drug reactions: evaluation of a risk prediction model of vancomycin-associated nephrotoxicity constructed using a data mining procedure. *J Eval Clin Pract.* 2017;23:1240–1246. doi:10.1111/jep.12767
17. Collins GS, Reitsma JB, Altman DG, et al. Transparent Reporting of a multivariable prediction model for Individual Prognosis or Diagnosis (TRIPOD): the TRIPOD statement. *Ann Intern Med.* 2015;162:55–63. doi:10.7326/M14-0697
18. Inker LA, Astor BC, Fox CH, et al. KDOQI US commentary on the 2012 KDIGO clinical practice guideline for the evaluation and management of CKD. *Am J Kidney Dis.* 2014;63:713–735. doi:10.1053/j.ajkd.2014.01.416
19. Fluss R, Faraggi D, Reiser B. Estimation of the Youden index and its associated cutoff point. *Biom J.* 2005;47:458–472. doi:10.1002/bimj.200410135
20. Wang Y, Bellomo R. Cardiac surgery-associated acute kidney injury: risk factors, pathophysiology and treatment. *Nat Rev Nephrol.* 2017;13:697–711. doi:10.1038/nrneph.2017.119
21. Jeon N, Staley B, Klinker KP, et al. Acute kidney injury risk associated with piperacillin/tazobactam compared with cefepime during vancomycin therapy in hospitalised patients: a cohort study stratified by baseline kidney function. *Int J Antimicrob Ag.* 2017;50:63–67.
22. Dong M-H, Wang JW, Wu Y, et al. Evaluation of body weight-based vancomycin therapy and the incidence of nephrotoxicity: a retrospective study in the northwest of China. *Int J Infect Dis.* 2015;37:125–128. doi:10.1016/j.ijid.2015.06.025
23. Burgess LD, Drew RH. Comparison of the incidence of vancomycin-induced nephrotoxicity in hospitalized patients with and without concomitant piperacillin-tazobactam. *Pharmacotherapy.* 2014;34:670–676. doi:10.1002/phar.1442
24. Perazella MA. Drug-induced acute kidney injury: diverse mechanisms of tubular injury. *Curr Opin Crit Care.* 2019;25:550–557. doi:10.1097/MCC.0000000000000653
25. Huang M, Wu H, Zhou J, et al. Efficacy of vancomycin on gram-positive bacterial infection in elderly critical patients and risk factors associated with nephrotoxicity. *Arch Iran Med.* 2018;21:349–355.
26. Peyko V, Smalley S, Cohen H. Prospective comparison of acute kidney injury during treatment with the combination of piperacillin-tazobactam and vancomycin versus the combination of cefepime or meropenem and vancomycin. *J Pharm Pract.* 2017;30(2):209–213. doi:10.1177/0897190016628960
27. Chen X-Y, Xu R-X, Zhou X, et al. Acute kidney injury associated with concomitant vancomycin and piperacillin/tazobactam administration: a systematic review and meta-analysis. *Int Urol Nephrol.* 2018;50(11):2019–2026. doi:10.1007/s11255-018-1870-5
28. Hammond DA, Smith MN, Li C, et al. Systematic review and meta-analysis of acute kidney injury Associated with concomitant vancomycin and piperacillin/tazobactam. *Clin Infect Dis.* 2017;64(5):666–674. doi:10.1093/cid/ciw811
29. Bellos I, Karageorgiou V, Pergialiotis V, et al. Acute kidney injury following the concurrent administration of antipseudomonal beta-lactams and vancomycin: a network meta-analysis. *Clin Microbiol Infect.* 2020;20:30164–30166.

## Therapeutics and Clinical Risk Management

Dovepress

### Publish your work in this journal

Therapeutics and Clinical Risk Management is an international, peer-reviewed journal of clinical therapeutics and risk management, focusing on concise rapid reporting of clinical studies in all therapeutic areas, outcomes, safety, and programs for the effective, safe, and sustained use of medicines. This journal is indexed on PubMed Central, CAS,

EMBase, Scopus and the Elsevier Bibliographic databases. The manuscript management system is completely online and includes a very quick and fair peer-review system, which is all easy to use. Visit <http://www.dovepress.com/testimonials.php> to read real quotes from published authors.

Submit your manuscript here: <https://www.dovepress.com/therapeutics-and-clinical-risk-management-journal>