


RESEARCH ARTICLE

Open Access



Definitive-intent uniform megavoltage fractionated radiotherapy protocol for presumed canine intracranial gliomas: retrospective analysis of survival and prognostic factors in 38 cases (2013–2019)

M. Debreuque^{1,2*} , P. De Fornel³, I. David⁴, F. Delisle³, M. N. Ducerveau⁵, P. Devauchelle³ and J. L. Thibaud¹

Abstract

Background: Radiotherapy (RT) is currently considered the treatment of choice for presumed canine intracranial gliomas. However, variable therapeutic responses are described, due to heterogeneous populations and different radiation methods or protocols. Only one study dedicated to intracranial suspected glioma highlighted prognostic criteria. Determination or confirmation of specific clinical and imaging prognostic factors may guide the therapeutic management of these tumours. The objectives were to provide data on long-term clinical outcome (including quality of life, QoL) and to determine specific prognostic factors associated with survival time. We report a single-institution retrospective study, including all dogs with suspected symptomatic primary solitary intracranial glioma, treated with a complete uniform fractionated megavoltage radiation protocol of 15x3Gy over 5 weeks, between January 2013 and February 2019. Thirty-eight client-owned dogs were included. Medical records were retrospectively evaluated for median overall survival time (MST), clinical and imaging responses. Prognostic factors on survival were researched in terms of signalment, clinical presentation, tumour imaging characteristics and response following RT. Finally, the RT's impact on the dogs' clinical signs and QoL were evaluated by the owners.

Results: The disease-specific MST was 698 days (95% CI: 598–1135). Survival at 1 and 2 years were respectively $74.2 \pm 7.4\%$ and $49.0 \pm 9.8\%$. Initial clinical signs were related to survival, as well as tumour characteristics such as cystic-pattern, mass effect and Tumour/Brain volume ratio. No significant adverse effect or radiotoxicity was observed.

Conclusions: RT appears as a safe and effective treatment for canine intracranial gliomas, allowing long-term tumour control, improvement of life's quality and management of associated clinical signs. The initial clinical signs and MRI characteristics (Tumour/Brain volume ratio, cyst-like lesion and mass effect) may help predict the prognosis.

Keywords: Brain tumour, Glioma, MRI, IMRT, 3D-Conformal radiotherapy, Fractionated radiotherapy, Megavoltage, Outcome, Prognosis, Quality of life

* Correspondence: maud.debreuque@envt.fr

¹Service de Neurologie, MICEN VET, Créteil, France

²Université de Toulouse, ENVT, Toulouse, France

Full list of author information is available at the end of the article



© The Author(s). 2020 **Open Access** This article is licensed under a Creative Commons Attribution 4.0 International License, which permits use, sharing, adaptation, distribution and reproduction in any medium or format, as long as you give appropriate credit to the original author(s) and the source, provide a link to the Creative Commons licence, and indicate if changes were made. The images or other third party material in this article are included in the article's Creative Commons licence, unless indicated otherwise in a credit line to the material. If material is not included in the article's Creative Commons licence and your intended use is not permitted by statutory regulation or exceeds the permitted use, you will need to obtain permission directly from the copyright holder. To view a copy of this licence, visit <http://creativecommons.org/licenses/by/4.0/>. The Creative Commons Public Domain Dedication waiver (<http://creativecommons.org/publicdomain/zero/1.0/>) applies to the data made available in this article, unless otherwise stated in a credit line to the data.

Background

Gliomas are the second most frequent primary brain neoplasm in dogs, accounting for approximately 35% of all the central nervous system (CNS) primary tumours [1, 2]. They represent a pleomorphic group arising from glial cells and mainly includes astrocytomas and oligodendrogliomas [3, 4]. Most gliomas occur in adult dogs with median age of 8 years [1, 2]. Brachycephalic breeds such as Boxer, Boston terriers, French and English Bulldogs seem to be at risk [1, 2]. Histology is the gold standard for definitive diagnosis of tumour's type and grade, but remains rare because of practical, financial and safety considerations. Routinely, the presumptive antemortem diagnosis of intracranial tumour is based on signalment data and compatible magnetic resonance imaging (MRI) (imaging modality of choice), or Computed Tomography (CT) characteristics.

Several treatments options exist: symptomatic treatment (glucocorticoids and anticonvulsants), cytotoxic chemotherapy, surgery, radiotherapy (RT) and more recently immunotherapy [5, 6] or even entotherapy [7] (image-guided intratumoural chemotherapy treatment). Currently, RT is considered the treatment of choice for intracranial tumours in dogs [8–11]. Its objective is to induce tumour cell death or inhibit further cell division, while minimizing damage to any normal tissue surrounding or in the irradiated volume. The majority of studies on irradiation of brain neoplasms includes all types of tumours, most cases being meningiomas [9, 12–20] and only one recent case study is exclusively dedicated to gliomas [10].

As reported in the largest studies on external fractionated megavoltage RT for animals with intracranial gliomas, the median overall survival time (MST) ranges from 226 to 430 days [9–11, 13] and disease-specific survival reaches 772 days [11]. These discrepancies may be due to heterogeneous populations of dogs and tumour types/grade, multiple radiation protocols and various evaluation criteria. According to recent publications, only initial clinical signs and relative tumour volume appear to be prognostic criteria [10, 13]. Hence, dogs with severe neurological signs (non-ambulatory state, dysphagia) [13] or depressed mentation [10, 13] have significantly lower survival time than dogs with no or mild clinical signs, and dogs with relative tumour volume under 5% of the total calvarial volume, live significantly longer [10]. However, these results are not systematically observed, and controversies persist on statistically significant criteria specific for gliomas [11, 14, 19, 20]. Furthermore, studies failed to demonstrate the prognostic significance of tumoural MRI features (pre-radiation MRI characteristics or tumour progression after RT) [14, 19, 20].

The aim of the present study was to provide data on long-term clinical outcome (including quality of life,

QoL) in dogs with suspected primary solitary intracranial gliomas, solely treated with a uniformly fractionated megavoltage radiation protocol. The other objective was to determine glioma-specific prognostic factors (epidemiological, clinical and image-based) associated with survival time.

Results

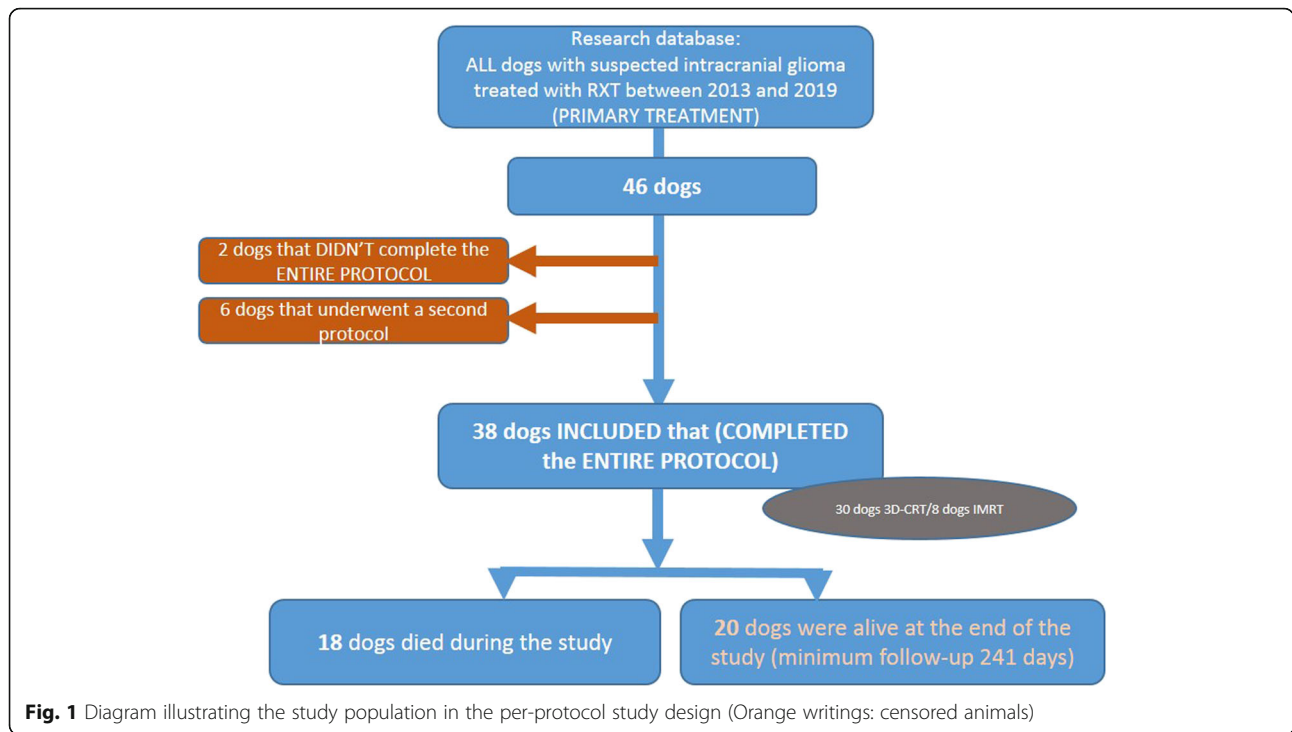
Of the 46 dogs presented for radiation therapy for suspected symptomatic intracranial glioma, to the authors' institution, 38 dogs met the inclusion criteria for the study. Two dogs were excluded because of treatment discontinuation due to neurological deterioration and MRI confirmation of tumour progression. Six dogs that underwent a second radiation protocol, because of local or metastatic recurrence, were also excluded (Fig. 1).

Dogs and tumour characteristics

Thirty-eight symptomatic dogs were considered in the study: 14 intact males, 3 neutered males, 5 intact females and 16 neutered females, with a median age of 8.2 years (mean 8.1, range 4.5–12.5 years) and a median weight of 13.1 kg (mean 18.1, range 3.7–37 kg). All dogs were pure breeds. The cohort included 20 French bulldogs, 3 boxers, 3 English bulldogs, 2 Cane Corso dogs, 2 Maltese dogs and 1 each of 8 other breeds, which represented 27 brachycephalic dogs (71%), and 11 non-brachycephalic dogs (29%).

None of the dogs had evidence of life-compromising disease or unexpected metastases based on whole-body CT (Computed Tomography) scans. The main presenting complaints at the first clinical examination included seizures (35/38), behavioral changes (8/38), circling (6/38), altered mentation (5/38), proprioceptive deficits (3/38) and ataxia (2/38). Thirty-five dogs were presented with a history of seizures (92.1%) and 23 of them (23/35, 65.7%) showed seizures as their only sign of neurologic disease. Seizure frequency was detailed in 33 dogs, 16 dogs had clusters seizures and two had demonstrated status epilepticus (SE). During the first neurological examination, abnormalities were graded as absent in 23 dogs (seizures only), mild/moderate in seven dogs and severe in eight of 38 dogs. Neurologic signs were consistent with focal disease and the tumour location confirmed by MRI studies.

Thirty-seven tumours were supratentorial, and a single one was infratentorial. Specific localization was frontal for 15 cases, parietal/temporal for 20 cases, occipital for two cases and caudal fossa for one case (brain stem). The 37 dogs with supratentorial tumour had signs consistent with forebrain disease (circling, seizure, behavioral changes, altered mentation or proprioceptive deficits). The dog with infratentorial tumour showed



ataxia and proprioceptive deficits. All MRI details are reported in Table 1.

Treatment

Treatment with 15 × 3 Gy was planned for all dogs. The first radiation session occurred in a median of 10 days after the diagnostic MRI, and 5 days [Range 3–10] after the planning CT simulation. Thirty of the 38 dogs (78.9%) were treated with 3D-CRT (3-dimensional conformal radiation therapy) and 8/38 (21.1%) with IMRT (Intensity-modulated radiation therapy). A median of three fields was used for 3D-CRT (Range 3–5) and five for IMRT. No treatment interruption was reported.

All irradiated dogs received between 0.5 mg and 1 mg/kg/q24 of methylprednisolone, for between 1.5 and 6 months, gradually tapered after the first MRI-recheck. No direct life-threatening secondary steroid effects were noticed, even if some dogs showed mild polyuria-polydipsia, typical pot-belly appearance and diffuse truncal alopecia.

All the patients, which presented with seizures, received anticonvulsant treatment, either in monotherapy (24/35) or in a combination therapy (11/35): Phenobarbital (24/35), Imepitoin (5/35), Potassium bromide (4/35) or Levetiracetam (13/35). They were maintained during the entire duration of the follow-up period and adapted to the seizure frequency and anticonvulsants serum levels for Phenobarbital and Potassium Bromide.

All animals were followed for at least 49 days to a maximum of 1492 days, and at least 241 days until 1492 days

for alive dogs at the end of study. The median duration of follow up was 561 days. At the end of the study, 18/38 dogs (47.3%) were dead, 20 dogs (52.7%) were alive (Fig. 1).

Clinical follow-up and outcome

The majority of dogs having completed the RT, were re-evaluated (clinical and MRI control) for the first time, approximately 3 months after the last session of irradiation, then every 2 to 6 months. Twenty dogs had at least a second follow-up MRI. Ten dogs had more than three follow-up MRIs.

A significant majority of dogs showed initial neurologic signs improvement within the 5 weeks of the RT (proportion of dogs with improved neurologic signs = 0.86 (95% CI: 0.76–0.97, *p* value < 0.001). In detail, 34/38 dogs showed improved neurologic signs after protocol completion, corresponding to 19 dogs with only seizures as initial signs, and 15 dogs with neurologic signs with/without seizures. One dog showed deterioration due to increased seizure frequency and three dogs were judged as stable. Further improvement was noted after the sessions for 14 dogs, mainly due to improved behavior at home, and according to neurological examinations performed in the clinic (proportion = 0.41 [0.26–0.55], *p* value = 0.85). During the follow-up period, an improvement or normalization of neurological status was observed in all but one seizing dog (see below).

Thirty-three dogs initially presented with seizures had follow-up characterization of the seizures (frequency and occurrence of cluster seizures/SE). Thirty dogs (30/33,

Table 1 MRI image-based criteria used for statistical analysis. Results of univariable statistical analysis (KM and Log-rank tests for cross classified variables, Cox regression model and LRT test for continuous variables). MRI-cystic pattern, tumour location and mass effect have a significant effect on survival ($p < .05$)

MRI Image-based criteria	Results [Range]				P value
Tumor location	37 supratentorial/ 1 infratentorial				0.081
	Frontal/olfactory :15/38	Parietal/temporal :20/38	Occipital : 2/38	Caudal Fossa : 1/38	
T1-WI+ LD (mm)	15,5 mm, [10,1-28,5]				0.37
T2 surface (mm2)	285,5 mm2, [104-972]				0.31
Margins characteristics on T2-WI	Smooth: 29/38	Poorly defined: 6/38		Irregular: 3/38	0.95
T2 hyperintensity homogeneity	Homogenous 12/38		Inhomogeneous 26/38		0.09
Cyst-like lesion(s)	13/38				0.015
Edema	Absent:21/38	Present : 17/38 (moderate: 15/38 or severe: 2/38)			0.87
Contrast enhancement	Absent: 9/38	Partial: 27/38		Complete: 2/38	0.4
	Homogeneous ring enhancement : 3/27	Inhomogeneous ring enhancement: 2/27		Diffuse heterogeneous enhancement: 22/27	
Disappearance of cortical sulci	Absent: 13/38	Present: 25/38 (Focal: 20/38, Diffuse: 5/38)			0.16
Synrigomyelia	Present 6/38		Absent 32/38		0.28
Mass effect	Moderate: 25/38		Severe: 13/38		0.018
Gradient echo void	None: 25/38	Single: 7/38	Multifocal: 6/38	Diffuse: 0/38	0.79
T1 LD variations	Median :100 %, [-15-100]				0.49
T2 LD variations	73%, [-56-100]				0.
RECIST criteria	CR: 15/34		PR/ST: 19/34		0.30
Tumour Volume (mm3)	4.5 [0.8-18.1]				0.55
Pre-RT Tumour/ Brain Volume Ratio	0.046 [0.012-0.21]				0.12
Post-RT/Pre-RT Tumour volume Ratio	0,16 [0.014-0.63]				0.17

90.9%) showed reduction of frequency and/or intensity (disappearance of cluster seizures /SE) of seizures (Additional file 1). This corresponded to a significant majority of dogs with reduced seizure (proportion = 0.91 95%CI: 0.82–1.00, p value < 0.001). Seizures increased in frequency during RT for one dog, despite absence of peritumoural edema and decrease of tumour size on three consecutive repeat MRI scans over a 10 month’s period. The seizures stopped with aggressive anticonvulsant treatment and the dog was still alive 706 days after the first session without further seizure.

All the dogs that died during the study, showed subacute deterioration of neurologic signs occurring 2 to 42 days before death or euthanasia. For the majority, neurologic signs corresponded to worsening or recurrence of initial clinical signs. For five dogs, new neurologic signs were also observed. Seven dogs underwent follow-up MRI

in proximity to clinical deterioration, showing local recurrence and/or suspected metastatic disease (see below).

Image-based follow-up

At the first recheck, 34 diagnostic control MRI examinations were available for assessment according the RECI ST categorization: 21 with initial contrast enhancing tumour (21/34, 61.8%) and 13 without enhancing tumour or presenting non-measurable enhancement (13/34, 38.2%). For dogs with enhancing tumour, response to treatment was Complete Response (CR) in 13/21 (61.9%), Partial Response (PR) in 5/21 (23.8%), and Stable Disease (SD) in 3/21 (14.3%). Progressive disease was not observed. The mean decrease of tumour size was 75% between the diagnosis and the first recheck (decrease of T1-WI+ LD). Taking into account the 13 others non-enhancing tumours, overall 15 cases were

classified as CR (15/34, 44.1%) and 19 cases were classified as PR/SD (19/34, 55.9%). All dogs had minimal to marked shrinkage of the mass and a reduction of the mass effect. Additional images show different responses to radiotherapy in an additional file (Additional file 2).

During follow-up, seven dogs that had completed the RT and had normalization of initial clinical signs, presented with clinical signs consistent with brain and/or cervical spinal cord disease, by a median of 229 days after the last session. Local tumour progression and new lesions localized in the brain or in the cervical spinal cord were observed on follow-up MRI in two dogs and five dogs respectively. In those five cases, the initial lesion was stable (1/5), or had shown complete (2/5) or partial (2/5) response. Neurologic signs were consistent with forebrain disease (altered mental status, circling, seizures, 3/5) and/or cervical pain (2/5). These new lesions were considered as metastatic disease. In one dog, neoplastic cells were found on CSF analysis and necropsy revealed metastases of an anaplastic oligodendroglioma in another dog. This dog was the only confirmed histologic diagnosis in our study.

Survival analysis and prognostic factors

The median overall survival time (MST) was 698 days (95% CI: 598–1135) (Fig. 2). The estimated survival probability at 1 and 2 years was $74.2 \pm 7.4\%$ and $49.0 \pm 9.8\%$, respectively.

Univariate analysis

Based on univariate analysis, initial neurological signs, MRI-cystic pattern and mass effect showed a significant

influence on survival at the level of 5% (Tables 1 and 2). Statistical survival at 1 year and 2 years according to these significant prognostic factors are summarized in Table 3 and KM survival curves are provided in Fig. 3.

Dogs without neurological deficit observed at diagnostic consultation, or only presenting seizures, had a MST of 1135 days (95%CI: 984-inf), a 2-years probability of survival (S2y) equal to $71.0 \pm 11.7\%$ compared to a MST of 494 days (95%CI: 310-inf) and $S2y = 18.6 \pm 11.6\%$ for dogs having initial neurological signs whatever their severity.

Considering significant MRI characteristics, dogs without cystic tumour had a MST of 984 days (95%CI: 666-inf) and a S2y equal to $59.2 \pm 11.6\%$ compared to MST of 494 days (95%CI: 309-inf) and a S2y equal to $21.0 \pm 17.0\%$ for dogs with cystic tumour. Considering mass effect, dogs with moderate mass effect had a better S2y and a better survival compared with dogs with severe mass effect: 61.4 ± 11.9 versus $26.9 \pm 15.1\%$, and 984 days (95%CI: 620-inf) versus 666 (95%CI: 310-inf) respectively.

Multivariate analysis

Additional significant variables in the univariate analysis at the level of 20%, which were then included in the multivariate Cox model, were the cortical sulci disappearance, tumour location, edema, T2 hyperintensity homogeneity, Tumour volume, Tumour/Brain Volume ratio and Post-RT/Pre-RT Tumour volume ratio. After step by step selection of variables, neurologic deficits-based scale and Tumour/Brain Volume ratio were the only variables remaining significantly associated with

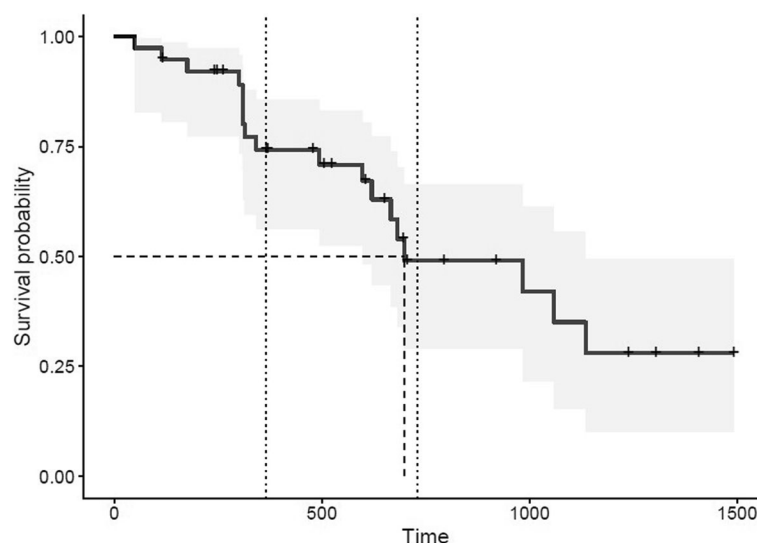


Fig. 2 Kaplan-Meier cumulative survival plot for dogs with suspected symptomatic gliomas that had completed the entire RT protocol (per-protocol design, gray zone representing 95% CI). Ticks indicate censored observations. Vertical dotted lines representing 1 and 2 years survival, dashed lines representing median survival time

Table 2 Epidemiological and clinical criteria used for statistical analysis on 38 dogs that had completed the entire RT protocol. Results of univariable statistical analysis on survival (Log-rank tests). Neurologic deficit based scale was adjusted to “presence” or “absence” of clinical signs to allow a significant effect on survival

Clinical, epidemiological and treatment criteria (Unit)	Repartition (Number of dogs) or Median [range] for continuous variables	P value
Brachycephalic breed	Brachycephalic dogs (27), non-brachycephalic (11)	0.70
French Bulldog	French Bulldog (22) , non-French Bulldog (16)	0.27
Weight (Kg)	23/38: Weight < 15 kg; 10/38: 15< Weight<30 kg; 5/38: Weight > 30 kg Median Weight 13.1 kg [3.7-37]	0.49
Age (years)	Median Age 8.2 years [4.5-12.5] 18/38 Age < 8 years; 20/38 Age> 8 years.	0.24
Neurologic deficit-based scale (diagnostic consultation)	Absence (23) / Presence (15): Mild/Moderate (7); severe (8)	0.002
Seizures	35/38 (92.1%)	0.664
Duration of clinical signs before diagnosis (days)	Median duration 14 days [1-305]	0.41
Radiotherapy type	3D-CRT (30), IMRT (8)	0.08

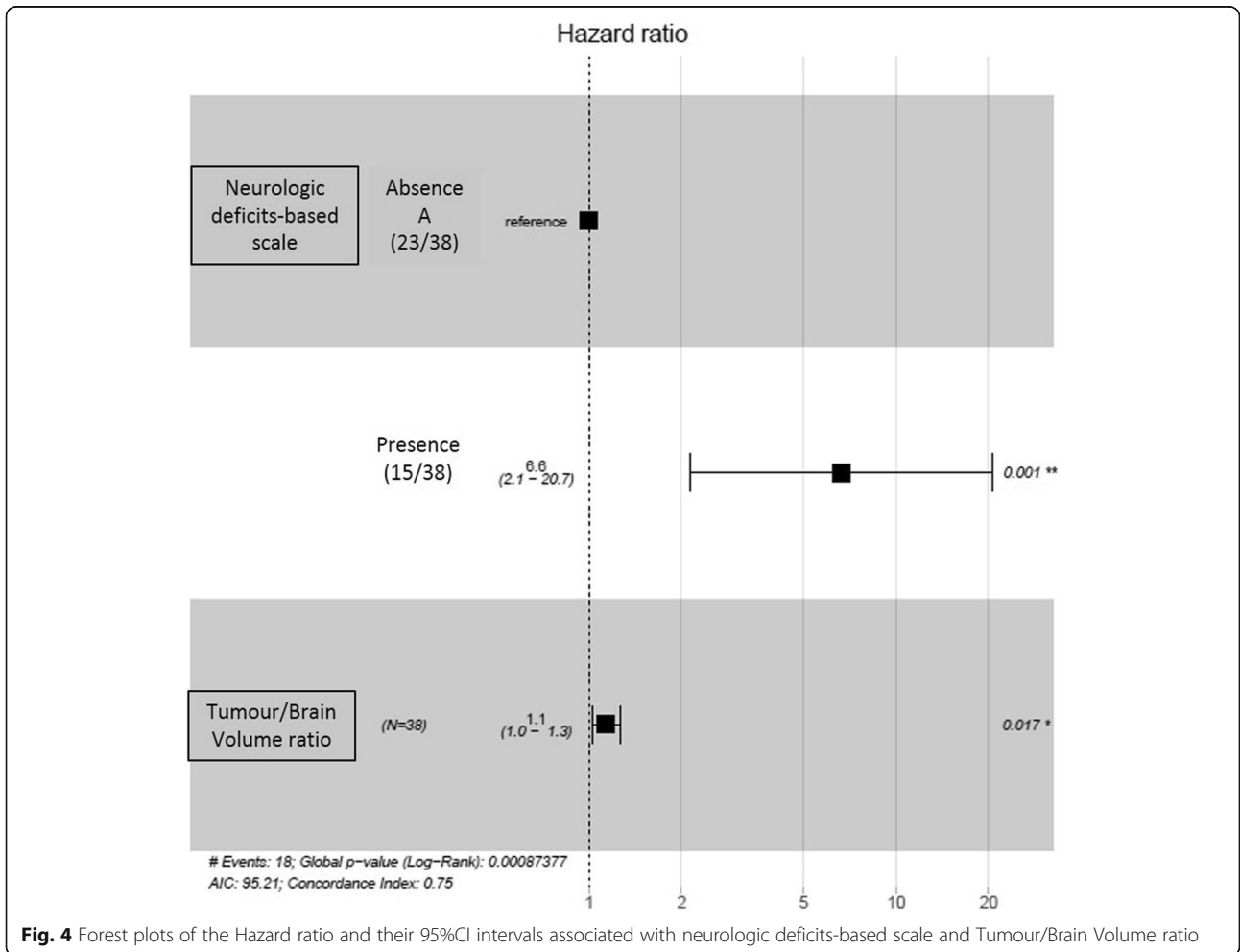
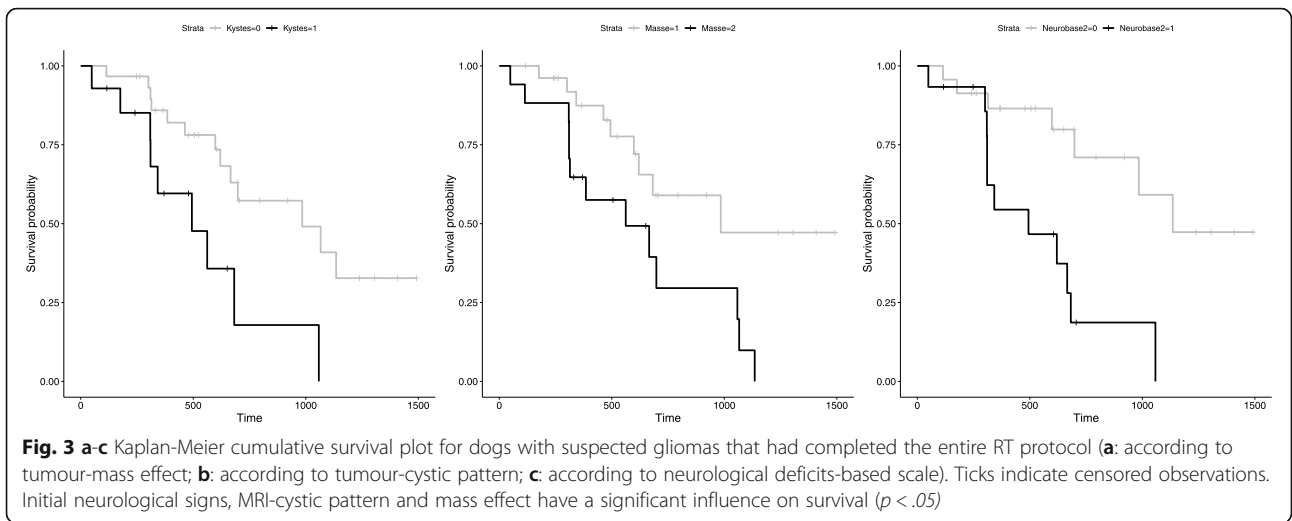
survival (Fig. 4). The regression coefficient estimated for neurologic deficit based scale was 1.89 ± 0.58 (p value Wald test = 0.001) corresponding to a Hazard ratio of 6.6, while the regression coefficient estimated for the Tumour/Brain Volume ratio was 0.13 ± 0.05 (p value Wald test = 0.02) indicating that a 1% increase in the tumour/Brain Volume ratio is associated with an increase of risk of death by 14%.

Evaluation of dogs’ quality of life (QoL) based on owner’s opinion

Owner questionnaire was available for 24 owners. Four owners reported a mild weakness of their dog during the first week of radiation, which disappeared at the second week of treatment. Owners’ perception of QoL was assessed with a Likert 10-value scale (1-Could not be worse and 10-could not be better). The median QoL

Table 3 1 and 2 year(s) survival percentages according to statistically significant criteria based on results of univariate analysis (Log-rank tests, $p < .05$; standard error: s.e)

Significant criteria in univariate analysis		1 year survival (±s.e)	2 years survival (±s.e)
Neurologic deficit	absence	86.5 % (±7.2)	71.0 % (±11.7)
	Mild/Moderate/severe	54.4% (±13.8)	18.6 % (±11.6)
Cyst-like lesion	Absence	82.9 % (± 7.8)	59.2 % (±11.6)
	presence	55.9 % (±14.9)	21.0 % (±17.0)
Mass effect	Moderate	86.2% (±7.4)	61.4% (±11.9)
	Severe	53.8% (±13.8)	26.9% (±15.1)



score before diagnosis was 6 (range 3 to 7). After the radiation therapy, the median QoL was 9 (range 5 to 10). Twenty-three responders stated that the QoL of their dog was stable or had improved with the radiation therapy, which corresponded to a significant improvement of QoL score after radiation therapy (one sided Wilcoxon signed rank test $z = -7.96$, p value < 0.001). Improvement was observed within the first 3 weeks of radiation for the majority of cases (21/24). Among those 21 dogs, 11 (52.3%) were classified as PR (4/11) or SD (7/11) and 19 were receiving corticosteroids treatment for at least 1 week before the first RT session, supposing improvement could already be noticed.

Discussion

The present study retrospectively described the outcome in 38 dogs treated with a complete uniformly fractionated megavoltage radiation protocol of 15x3Gy. To the author's knowledge, it is one of the largest studies on external RT as the sole treatment of presumed canine symptomatic intracranial glioma. MST was 698 days for dogs that underwent the entire protocol, with 74.2% of animals surviving more than 1 year and 49.0% more than 2 years. Previous studies evaluating intra-axial tumours, have determined MST following several treatments. In symptomatic protocols (corticosteroids and anticonvulsants) MST doesn't exceed 3.5 months (35–94 days) [10, 21–23] and surgery doesn't offer a significant gain in terms of survival [24] compared to symptomatic treatment protocols. Although chemotherapy is often an essential part of the therapy for human patients with intracranial gliomas [25], its benefits remain unclear in veterinary medicine [10, 21, 22]. A recent meta-analysis concerning brain tumour treatment [26], reported a median overall survival time of 226 days for RT-treated intra-axial tumours (range median of 60 to 437 days), based on 127 dogs. Data analysis and interpretation were complicated by the use of different RT methods (orthovoltage, Cobalt radiotherapy, hypo to hyperfractionated). When considering only largest recent studies on megavoltage RT-treated canine intracranial intra-axial tumours, MST variates between 226 and 430 days [9–11, 13]. Disease-specific survival for intracranial intra-axial tumour is available in only one study, and reached 772 days [11]. Then, based on our results, a protocol of 15 fractions of 3 Gy over 5 weeks seems to offer an interesting therapeutic alternative associated with an apparent benefit for life expectancy, compared with symptomatic treatment, without evidence of deleterious life-threatening early/early delayed radiation toxicosis. This protocol was also associated with significant improvement of clinical signs, better control of seizure and lack of evident adverse reactions. This is in accordance with a recent study [27] that demonstrated a significant

benefit of external megavoltage radiotherapy on seizure freedom period, compared with symptomatic treatment, on dogs with intracranial tumours.

Because of variability in RT protocols', study designs' and populations, comparison with other publications is problematic. Nevertheless, several particularities of our study may have influenced the survival. The majority of actual megavoltage RT protocols applies between 10 to 20 fractions of 2 to 4 Gy, over 3 to 5 weeks, on consecutive or alternate days, making our protocol theoretically comparable in terms of Biologically effective dose (BED, Additional file 3) or toxicity [28]. This protracted protocol with alternate sessions allowed us to space out general anesthesia on fragile dogs with potential high anesthetic risks. Unlike previous reports [10, 11], we applied it homogeneously to a large number of dogs (previous populations studied do not exceed 22 dogs), without taking into account the tumour characteristics (size, imaging grade or location). Moreover, because of a long study period and because all deaths were, potentially, attributable to the tumour/tumour's treatment, we were able to include animals with longer follow-up and determine a MST comparable to disease-specific survival, that may have influenced the final survival results. Finally, the prolonged use of corticosteroids may also contribute to the results, by reducing perilesional edema and potential secondary radiotoxicity [29]. The impact of a prolonged corticosteroid therapy would need to be proved in a large comparative prospective study on intracranial gliomas. Based on statistical results, the RT delivery method (3D-CRT or IMRT) did not influence survival. This result is in accordance with a recent study evaluating IMRT on primary brain tumours [30] showing comparable survival time and clinical toxicity compared to previously published data on 3D-CRT.

According to the owner's perception, the QoL of the dogs was significantly improved. Improvement was usually noted during the first 3 weeks of the protocol for most dogs, even for dogs without significant tumour reduction at the first follow-up MRI or those with prior symptomatic treatment. Based on these findings, despite the theoretical prominent delayed effect of radiotherapy on neoplastic cells, an early beneficial effect may exist, and clinical improvement could be expected even during the course of the protocol. This information could be crucial in the owner's decision to treat, generally in relation with the initial clinical status of their dog. This finding has been already reported [10, 11, 14, 16], and the exact mechanism of this assumed early effect, independent of the tumour-reduction mass effect, is not clearly understood. Actions on microscopic brain infiltration or on peri-tumoural edema or inflammation may be suspected. Serial follow-up MRIs during radiation therapy may reveal early changes, supporting this theory.

In our study, initial clinical signs were statistically related to survival. Two recent publications on canine megavoltage RT, one dedicated to gliomas [10] and one concerning all types of intracranial tumours [13], are in accordance with this observation, even if this finding remains controversial [11, 14, 20] in others studies which consider all types of intracranial tumours. After adjustment for the other variables, the initial neurological sign remains significantly linked with survival. Only dogs presenting with seizures as the initial complaint, will live statistically longer than dogs presenting with other signs, regardless of their severity.

In accordance with the literature, among image-based MRI criteria, the relative tumour-volume [10, 13] was the strongest significant factor associated with survival. In our study, cyst-like lesions and mass effect were significantly associated with poorer outcome in the first-step univariate analysis. MRI cyst-like lesions can mainly be due to necrotic areas or fluid production by the tumour itself [31] and are normally suspected, based on their T1/T2 signals and margins characteristics. We decided not to differentiate necrosis areas with true cystic areas because MRI doesn't seem to be sensitive enough to allow the specific distinction [31]. Necrosis is a typical feature of histologically high-grade glial tumour [4, 32, 33]. Therefore, MRI cystic-like lesion could reflect the histological grade tumour, and might be associated with survival. However, no statistical association has been demonstrated between MRI cystic-like component and tumour histologic grade [33, 34]. Moreover, to the authors' knowledge, association between MRI cyst-like lesions and survival has never been studied. Our results may suggest the inclusion of this MRI criterion in future studies.

Unlike previous published data concerning RT-treated meningiomas [16] or all types of intracranial tumours [14], severe mass effect was statistically related to a poor prognosis in our study. This may reflect that, although the tumour size was not statistically significant, the mass effect, resulting from a combination of location, volume, edema, hemorrhage and infiltration characteristics, has to be considered. After step by step adjustment of variables, these variables were not statistically significant in the multivariable analysis and so cannot be considered strong prognostic factors.

Contrast enhancement has been described as a significant criterion associated with high-grade gliomas [4, 34] that can reflect neovascularization, vasodilatation or alteration of the blood-brain-barrier, all features associated with aggressive tumours [35]. In our study, contrast enhancement (presence and characteristics) was not associated with survival, illustrating that other factors might be important to predict histological grade on MRI or, less probably, that histological grade might not be

associated with survival in treated dogs. As a consequence, in a context where predictability of glial tumour type or grade is indeed considered moderate with CT, or even with high field MRI [33, 34, 36], only the objectively measured Tumour / Brain Volume ratio may be useful to predict the prognosis without histological analysis.

Several imaging-based brain tumour response criteria have been described and used in veterinary medicine [37], according to human literature and experience. They allow an objective evaluation of therapeutic response and can constitute an important part in the study of clinical management of brain tumours in veterinary patients. Nonetheless, no consensus has been established. In our study, we decided to choose the RECIST criteria implemented by clinical assessment and taking into account the lesion's T2-WI hyperintensity (excluding suspected peri-tumoural edema). This can allow specific assessment of non-enhancing tumour, which can be observed in canine glial tumours. However, according to statistical analysis, we did not highlight any link between RECIST criteria and survival, not even between TILD variation and survival, as suspected in a previous study [19]. Therefore, categorization of the response as CR rather than PR or SD might not preclude a long survival time. RECIST criteria may help homogenize therapeutic response assessment in future studies, but its association with survival might not be significant.

Our statistical conclusions are limited by relatively small sample sizes in classification subgroups and small numbers of non-censored dogs as time progresses are associated with larger standard errors. Furthermore, we decided to base our study on a per-protocol design. In order to avoid biases due to study design and selected inclusion criteria, we compared our survival results to an intent-to-treat study design; furthermore, we investigated the Progression Free Survival (PFS). These survival analyses has been performed using Kaplan-Meier curve analysis on a population including the 46 dogs concerned by our protocol during the study period, as mentioned in the results: 38 dogs initially included, two dogs that haven't completed the entire protocol and six dogs that underwent a second radiation protocol. The results were similar in terms of MST, PFS and survival percentages at 6 months, 1 and 2 years (Additional file 4).

In this study, seven dogs had evidence of progressive disease during the follow-up period, including two dogs with local recurrence and five dogs with meningeal or parenchymal intracranial or spinal cord, multifocal suspected metastasis without evidence of local recurrence. The occurrence of metastatic intracranial glioma is not clearly defined in canine medicine, even more in irradiated animals [10]. In our study, only two dogs had cytological or histological confirmation of the diagnosis of

metastatic disease. This finding could be of interest for further studies describing the occurrence of secondary metastatic disease of intracranial gliomas. It might suggest that chemotherapy might be an additional treatment to RT to limit dissemination.

Limitations of this study can be discussed. One is the lack of histopathological analysis to confirm the diagnosis of glioma and their histological grade. However, MRI have been demonstrated to be a sensitive and specific tool to detect neoplastic lesions and diagnose tumour type (extra/intra-axial), particularly gliomas [31, 38], especially when clinical information and epidemiological data are considered [38–40]. However, vascular disease may lead to false diagnosis and cerebrovascular strokes may be misdiagnosed as gliomas [38, 40]. In order to decrease this risk of misdiagnosis, several measures were taken:

- Clinical and epidemiological information for each dog were available for the reviewers.
- The presence of mass effect was an inclusion criterion, which is considered discriminant between ischemic infarct and neoplastic disease [40–42].
- The DWI and signal analysis on ADC Map were incorporated in the MRI characteristics. Although definitive diagnosis cannot be done in Humans or animals based on DWI [43, 44], it may help in the differentiation between gliomas and acute infarction with low ADC and high DWI signal [8, 40]. These MR lesions were therefore excluded.

The retrospective nature of the study did not enable collection and completion of the questionnaires in an anonymous way and at the same time point during the follow-up period. Furthermore, lack of necropsy did not allow the exact cause of death to be established, nor the detection of tumour recurrence or late radionecrosis, in dogs with neurologic worsening.

Conclusion

In conclusion, external megavoltage radiation therapy with fractionated protocol (15 × 3 Gy, for 5 weeks), for dogs with primary suspected intracranial glial tumours, provides a long-term tumour control with a reasonably low risk of symptomatic complications and a significant early and persistent improvement in the dogs' quality of life. In our study, the initial neurologic deficits and the Tumour/Brain Volume ratio are statistically related to survival as in previous studies. Our results also suggest that MRI cyst-like lesions and mass effect may be of prognostic interest.

Methods

Study design

Retrospective observational study.

Dogs and tumour characteristics

The database of the neurology service of the authors' institution was searched for dogs with presumptive symptomatic intra-axial brain tumours that had been treated with fractionated radiation therapy as a primary treatment modality (between January 2013 and February 2019). The protocol had to be entirely completed. All dogs had full clinical and neurologic examinations performed before the radiation protocol. The presumptive diagnosis of intracranial glioma was made on signalment, history, neurological symptoms and compatible MRI characteristics, based on veterinary neurologist and human radiologist interpretations. MRI features consistent with glial tumour included the identification of a solitary intra-axial lesion exerting a mass effect and characterized by an altered T2 signal [8, 39, 41, 45] with variable contrast enhancement (ranging from none to variably intense, non-uniform or ring-like enhancement) and possible perilesional edema. In order to streamline our data and homogenize final information with prior studies, we decided to consider, inclusion and exclusions criteria, descriptions indices and clinical grading previously described.

The clinical-imaging exclusion criteria were inspired by Dolera [10], and implemented as followed:

- Previous chemotherapy or surgical treatment of the tumour;
- Lesion localization close to a vascular territory of a main cerebral artery or a perforating artery with sharp demarcation [42], strong hyperintensity in the diffusion image and hypointensity on ADC (Apparent Diffusion Coefficient) map [40] suggesting a vascular origin [40, 42, 46];
- Fever/other symptoms or blood abnormalities correlated with inflammation, presence of any predisposing factor to infection, image characteristics of an abscess (T2-Weighted images (T2-WI) hypointense peripheral rim or peripheral concentric “onion skin like” hypointense rim, thick strong peripheral rim contrast enhancement [47] or a granuloma (dural contact, T2-WI hypointensity) [48] and concurrent findings of meningitis [48, 49]; these aspects were considered indicative of inflammatory diseases [38];
- Well defined rounded structure, isolated or in continuity with ventricles and cisterns with thin, smooth non-enhancing walls and content resembling cerebrospinal fluid (CSF) or fat, that did not display contrast enhancement, were considered congenital intracranial cysts (arachnoid or dermoid cysts) [50].

Data from the medical records were reviewed, including breed, age, sex, weight, neurological status and

seizure history at the time of presentation, additional treatments and survival time. For evaluation of prognostic factors, the initial clinical signs were classified by a board-certified neurologist, according to a neurological scale based on their severity and the presence or absence of seizures [11, 20, 51] (Table 4).

All dogs had a complete whole-body CT scan (16-row multidetector helical CT unit GE Healthcare), before and after administration in a cephalic vein of 2 mL/kg body weight of sodium and meglumine ioxotalamate IV, ventilation being manually controlled in all dogs, and scans made at the end of inspiration to evaluate potential co-morbidity, that could modify the therapeutic decision and outcome.

All MRIs were conducted using a 1.5-T MRI scanner (1.5-T GE Healthcare) and performed prior to the beginning of radiation protocol. Imaging sequences were obtained in 3 mm transverse T2-WI, T2 fluid-attenuated inversion recovery (T2-FLAIR-WI), transverse diffusion-weighted echo planar pulse sequence (DWI, b-value 1000 s/mm²), T2*-weighted gradient record echo (T2*-WI) or Susceptibility Weighted images (3D gradient Echo, SWAN sequence), and 0.8 mm 3D-T1-weighted images (T1-WI), before and after intravenous injection of a contrast medium (T1-WI +). For post-contrast images, Gadolinamide (Dotarem; Guerbet, France) 0.05 mmol/mL was administered intravenously at the dose of 0.2 mL/kg.

With regard to tumour characteristics, images were reviewed and 14 descriptive criteria were considered (Table 5). Tumour volume (GTV volume), Tumour/Brain volume ratio and Post-RT/Pre-RT Tumour volume ratio were computed for each dog, when possible, and added to the tumour characteristics reported in the Table 5. Finally, the grade and all the tumour criteria were then evaluated for their influence on prognosis.

Treatment

All dogs were treated with external beam megavoltage RT. Radiation protocol for all dogs consisted of 15 sessions of 3 Gray (Gy), over 5 weeks, on a Monday-Wednesday-Friday schedule to a total dose of 45 Gy. Radiation was delivered with a 6-MV linear accelerator (Clinac iX, Varian, Palo Alto, California) equipped with

a 5-mm leaf-width multi-leaf-collimator, using 3D-CRT or IMRT. Additional details on the radiotherapy protocol description are summarized in an additional file (Additional file 3).

All irradiated dogs received approximately, 0.5 mg/kg/q24, methylprednisolone sodium succinate during the RT protocol until, at least, the first follow-up. Twenty-one dogs were already treated with corticosteroids before the first RT session, 17 dogs had corticosteroid treatment started on first day of protocol. When seizures were reported, anticonvulsant treatment was recorded.

Clinical and image-based follow up

Clinical and neurological examinations were performed at least once a week during the irradiation period and at the last session of the protocol. If dog presented seizures before RT, seizure characteristics (frequency and occurrence of cluster seizures/ SE) were recorded at the end of RT in order to allow determination of clinical improvement (Additional file 1). After the treatment period, dogs were re-evaluated (clinical and MRI control) for the first time, approximately 3 months after the last session, then every 2 to 6 months. Changes of neurological signs and corticosteroid therapy were carefully recorded allowing detection of potential early/early delayed radiation toxicity between last session and first recheck. Change of neurological status was then retrospectively evaluated as “stable”, “improved” or “deteriorated” at the last radiation session and at the first post-radiation consultation, based on follow-up informations, gathered from medical records. Specific response evaluation criteria were established to assess regression after irradiation, and observed on the first follow-up MRI. The MRI evaluation was performed inspired by the revised Response Evaluation Criteria in Solid Tumour (RECIST) categorization implemented with clinical status [52]. In case of enhancing lesions, it was based on a one-dimensional tumour measurement of enhancing lesions on transverse T1-WI+ or, in case of non-enhancing lesion, it was based on a two-dimensional tumour measurement on transverse T2-WI [37, 52]. The categorical assignment criteria are reported in an additional file (Additional file 5). For dogs that were not re-evaluated by ourselves, referring veterinarians and

Table 4 The neurologic deficit-based scale considers neurological abnormalities observed during the neurological examination performed at the diagnostic consultation [11, 20, 51]

Neurologic deficits-based scale	
0: Absence	no neurological deficit (only seizures)
1: Mild/Moderate	mild deficits (head tilt or proprioceptive deficits with normal mentation and ambulatory state)/moderate deficits (overt neurological signs in an ambulatory animal with normal mentation state such as paresis, ataxia, cranial nerve deficits)
2: Severe	severe neurologic deficits (non ambulatory state or depressed mentation)

Table 5 Pre-radiation MRI characteristics used for tumour description and statistical analysis [11, 14, 16, 19]

MRI Imaging characteristics	Description (Unit)
Location	Frontal-Olfactory/Parietal-temporal/Diencephalic-internal capsule/ Caudal fossa/Occipital.
T1-WI Longest diameter (T1 LD)	Initial longest diameter across the contrast-enhancing lesion in a transverse plane on T1-weighted images (mm)
T2-WI surface	Product of the longest perpendicular diameters across the well-defined T2-hyperintense lesion observed on T2 transverse sequence. Diffuse T2 hyperintensity of the surrounding white matter corresponding to suspected vasogenic edema, was excluded (mm ²).
Tumour Volume	Corresponding to the GTV volume (mm ³)
Tumour / Brain Volume ratio	Corresponding to the GTV Volume / Brain Volume ratio.
Post-RT Tumour / Pre-RT Tumour Volume ratio	Corresponding to the post-RT Tumour Volume / pre-RT tumour volume ratio
Margins (on T2-weighted images)	Smooth/Poorly defined/irregular
T2 hyperintensity homogeneity	Homogeneous / inhomogeneous
Cyst-like lesions (Hyperintense on T2-WI, hypointense on T2FLAIR-WI and T1-WI)	Present / Absent
Edema	Absent /Moderate /Severe
Contrast enhancement	Absent/partial/Complete
Partial contrast enhancement	Ring homogeneous / Ring inhomogeneous/ diffuse heterogeneous
Cortical sulci disappearance	Absent/Focal/Generalised
Syringomyelia	Absent/Present
Mass effect	Subjectively based on midline shift, ventricular compression and loss of parenchymal architecture: Moderate /Severe
Herniation	subtentorial/ Foramen magnum / Sub-falcine
Gradient echo signal void	Absent/Single/Multifocal/diffuse

owners were interviewed by phone by one of the authors. Death was attributed to the tumour or to the RT, if intracranial neurological signs were reported.

Radiation toxicities were graded according to the Veterinary Radiation Therapy Oncology Group criteria [29, 53] (Additional file 6).

Evaluation of dogs’ QoL based on owner’s opinion

Information regarding owner’s perception of the benefits of RT was obtained using a standardized questionnaire (Additional file 7). The questionnaire was distributed to the owners after completion of the radiation protocol: at their first re-evaluation, sent by e-mail or fulfilled by telephone with one of the authors, between 2 months and 4 years after the radiation therapy. The goal was to determine owner’s perception of the change in clinical sign and quality of life (QoL) of their dogs before, during, just after RT and during the follow-up period, and evaluate their opinion about their decision to treat.

Statistical analysis

To test if a majority of dogs showed improvement of their clinical status, the proportion of animal showing improvement for each of the clinical criterion was compared to 0.5 using one-side z-test.

Data were encoded in Excel and analyzed with R (version3.5.3, Vienna, Austria). Animals that didn’t complete the entire RT protocol were excluded from the statistical analysis. All deaths were considered events. Dogs lost to follow-up and dogs alive at the time of reporting were censored. Survival time or time until censoring were defined from the first session of the RT protocol.

In a first step of the analysis, population survival probabilities were calculated using Kaplan–Meier (KM) approach. Log-rank tests were also used to assess in univariate analysis the effect of each cross classified epidemiological, clinical, and imaging variables, as well as radiation therapy type (3D CRT/IMRT) on survival curve. For some factors which survival did not significantly differ, we recodified and gathered classes, keeping biological meaning, in order to reanalyze their statistical significance. Cox proportional hazard model and likelihood ratio test were used in univariate analysis to assess the effect of continuous variables (significant *p* value < .05). In addition, in a second step of the analysis, multivariate analysis was performed using Cox proportional hazard model. All factors with *p* value lower than 0.2 in the first step of the analysis, were included in the saturated Cox model. Variables were then selected by step by step descending procedure using the likelihood ratio

test as selection criterion to obtain the reduced Cox model. The proportional hazards assumption was checked using the Schoenfeld residuals for each variable included in Cox models. R Survival package was used for the analysis (*A Package for Survival Analysis in R*. R package version 3.1–12, <https://CRAN.R-project.org/package=survival>).

Improvement in the QoL was tested by comparing QoL during and after RT using one sided Wilcoxon signed rank test.

Supplementary information

Supplementary information accompanies this paper at <https://doi.org/10.1186/s12917-020-02614-x>.

Additional file 1. Clinical improvement at the end of the RT protocol for 30 dogs initially presenting seizures.

Additional file 2: Figure a. Right frontal glioma. A, B: Pre-treatment T2-WI (A), T1-WI + (B). C,D: Two months post-RT. T2-WI (C), T1-WI + (D). These images show complete response with disappearance of contrast-enhancement. **Figure b.** Right piriform glioma. A,B: Pre-treatment T2-WI (A), T1-WI+ (B). Absence of contrast enhancement. C,D: 2 months post-RT. T2-WI (C), T1-WI+ (D). These images show PR/SD with decreased T2-WI hyperintensity, according to RECIST criteria for non-enhancing tumour. **Figure c:** Left piriform glioma. A,B: Pre-treatment T2-WI (A), T1-WI+ (B). C,D: Four months post-RT. T2-WI (C), T1-WI + (D). These images show partial response with persistent diffuse contrast enhancement (dotted arrow).

Additional file 3. Radiotherapy protocol description.

Additional file 4. Intent-to-treat study design: Overall and Progression-Free survival analyses.

Additional file 5 RECIST criteria implemented with clinical evaluation [20, 37, 52]: MRI enhancing lesions are defined as enhancing lesions visualized on transverse T1-WI+ (the minimum size was 10 mm). MRI non-enhancing tumours are designed as well delimited T2-hyperintensity (suspected vasogenic edema, corresponding to diffuse T2 hyperintensity of the surrounding white matter, was excluded), visualized on transverse T2-WI. For enhancing tumours, the longest diameter (LD) across the contrast-enhancing lesion on transverse T1-WI+ was measured and reported as the baseline diameter (*T1-WI+ LD*). Non-enhancing tumour' surface were calculated as the product of the longest perpendicular diameters (*T2 surface*, mm²).

Additional file 6. Radiation toxicities, definitions and grades of radiation toxicities used in the study (according to the Veterinary Radiation Therapy Oncology Group) [29, 53].

Additional file 7. Owner questionnaire.

Abbreviations

3D-CRT: 3-dimensional conformal radiation therapy; ADC: Apparent Diffusion Coefficient; BED: Biologically effective dose; CNS: Central nervous system; CR: Complete response; CSF: Cerebrospinal fluid; CT: Computed tomography; CI: Confidence interval; DWI: Diffusion-weighted images; GTV: Gross volume tumour; Gy: Gray; IMRT: Intensity-modulated radiation therapy; IV: Intravenous; KM: Kaplan-Meier; MRI: Magnetic Resonance Imaging; MST: Median overall survival time; PD: Progressive disease; PR: Partial response; PTV: Planning target volume; QoL: Quality of life; RECIST: Response Evaluation Criteria in Solid Tumour; RT: Radiotherapy; S2y: 2-years probability of survival; ST: Stable disease; T1LD: T1-WI longest diameter; T2-WI: T2 weighted images; T1-WI: T1 weighted images; T1-WI+: T1 weighted images post-contrast; T2-FLAIR-WI: T2 fluid-attenuated inversion recovery weighted images; T2*-WI: T2* weighted images

Acknowledgments

The authors thank all the colleagues of MICEN VET referral center and particularly Joelle Giboin (radiation therapy assistance) and Romain Francois (technical assistance for MRI) for their flawless implication and the care of our patients. They also want to thank Marie-Anne Colle (ONIRIS, Nantes, France) for her help concerning the histological analysis, Catherine Sarrade for their supervision in planning treatments, Alexis Bilmont and Alexandre Leroux for their support and help in the drafting process.

Authors' contributions

MD and JLT collected the clinical data, reviewed the MRI images and drafted the manuscript. ID performed the statistical analysis. FD, PDF and PD participated in the collection of the radiotherapy informations. MND participated in the images' review. All authors read, corrected and approved the final manuscript.

Funding

No funding source to declare.

Availability of data and materials

The datasets used and/or analyzed during the current study are available from the corresponding author on reasonable request.

Ethics approval and consent to participate

Not applicable (retrospective study).

Consent for publication

Not applicable.

Competing interests

The authors declared no potential conflicts of interest with respect to the research, authorship, and/or publication of this article.

Author details

¹Service de Neurologie, MICEN VET, Créteil, France. ²Université de Toulouse, ENVT, Toulouse, France. ³Service d'Oncologie et Radiothérapie, MICEN VET, Créteil, France. ⁴GenPhySE, INRAE, Université de Toulouse, INPT, ENVT, Castanet Tolosan, France. ⁵Hôpital Européen de Paris La Roseraie, Aubervilliers, France.

Received: 28 July 2020 Accepted: 7 October 2020

Published online: 31 October 2020

References

- Song RB, Vite CH, Bradley CW, Cross JR. Postmortem evaluation of 435 cases of intracranial neoplasia in dogs and relationship of neoplasm with breed, age, and body weight. *J Vet Intern Med.* 2013;27:1143–52.
- Snyder JM, Shofer FS, Van Winkle TJ, Massicotte C. Canine intracranial primary neoplasia: 173 cases (1986–2003). *J Vet Intern Med.* 2006;20:669–75.
- Withrow SJ, Vail DM, Page RL. Withrow and MacEwens's small animal clinical oncology. 6th ed. St Louis: Elsevier; 2019.
- Koehler JW, Miller AD, Miller RC, Porter B, Aldape K, Beck J, Brat D, Cornax I, Corps K, Frank C, Giannini C, Horbinski C, Huse JT, O'Sullivan G, Rissi DR, Simpson M, Woolard K, Shih JH, Mazcko C, Gilbert M, LeBlanc AK. A revised diagnostic classification of canine Glioma: towards validation of the canine Glioma patient as a naturally occurring preclinical model for human Glioma. *J Neuropathol Exp Neurol.* 2018;0:1–16.
- Olin MR, Ampudias-Mesias E, Pennell CA, Sarver A, Chen CC, Moertel C, Hunt M, Pluhar GE. Treatment combining CD200 immune checkpoint inhibitor and tumour-lysate vaccination after surgery for pet dogs with high-grade Glioma. *Cancers.* 2019;11:1–11.
- Maclellan JD, Arnold SA, Dave AC, Hunt MA, Pluhar GE. Association of magnetic resonance imaging-based preoperative tumour volume with postsurgical survival time in dogs with primary intracranial glioma. *J Am Vet Med Assoc.* 2018;252:98–102.
- Hicks J, Platt S, Stewart G, Senneca C, Holmes S, Kent M, Howerth E, Kaplan J, Kaplan E. Intratumoural temozolomide in spontaneous canine gliomas: feasibility of a novel therapy using implanted microcylinders. *Vet Med Sci.* 2019;5:5–18.
- Dickinson PJ. Advances in diagnostic and treatment modalities for intracranial tumours. *J Vet Intern Med.* 2014;28:1165–85.

9. Brearley MJ, Jeffery ND, Phillips SM, Dennis R. Hypofractionated radiation therapy of brain masses in dogs: a retrospective analysis of survival of 83 cases (1991-1996). *J Vet Intern Med.* 1999;13:408–12.
10. Dolera M, Malfassi L, Bianchi C, Carrara N, Finesso S, Marcarini S, Mazza G, Pavesi S, Sala M, Urso G. Frameless stereotactic radiotherapy alone and combined with temozolomide for presumed canine gliomas. *Vet Comp Oncol.* 2017;0:1–12.
11. Rohrer Bley C, Sumova A, Roos M, Kaser-Hotz B. Irradiation of brain tumours in dogs with neurologic disease. *J Vet Intern Med.* 2005;19:849–54.
12. Dolera M, Malfassi L, Pavesi S, Marcarini S, Sala M, Mazza G, Carrara N, Finesso S, Urso G. Stereotactic volume modulated arc radiotherapy in canine Meningiomas: imaging-based and clinical neurological posttreatment evaluation. *J Am Anim Hosp Assoc.* 2018;54:77–84.
13. Schwarz P, Meier V, Soukup A, Drees R, Besserer J, Beckman K, Roos M, Rohrer BC. Comparative evaluation of a novel, moderately hypofractionated radiation protocol in 56 dogs with symptomatic intracranial neoplasia. *J Vet Intern Med.* 2018;32:2013–20.
14. Spugnini EP, Thrall DE, Price GS, Sharp NJ, Munana K, Page RL. Primary irradiation of canine intracranial masses. *Vet Radiol Ultrasound.* 2000;41:377–80.
15. Mariani CL, Schubert TA, House RA, Wong MA, Hopkins AL, Barnes Heller HL, Milner RJ, Lester DM, Lurie DM, Rajon DA, Friedman WA, Bova FJ. Frameless stereotactic radiosurgery for the treatment of primary intracranial tumours in dogs. *Vet Comp Oncol.* 2015;13:409–23.
16. Keyerleber MA, McEntee MC, Farrelly J, Thompson MS, Scrivani PV, Dewey CW. Three-dimensional conformal radiation therapy alone or in combination with surgery for treatment of canine intracranial meningiomas. *Vet Comp Oncol.* 2015;13:385–97.
17. Griffin LR, Nolan MW, Selmic LE, Randall E, Custis J, LaRue S. Stereotactic radiation therapy for treatment of canine intracranial meningiomas. *Vet Comp Oncol.* 2016;14:158–70.
18. Burkard Moon A, Barnes Heller H, Forrest L. Image-guided stereotactic radiotherapy in 4 dogs with intracranial neoplasia. *Can Vet J.* 2016;6:57:19–22.
19. Zwingenberger AL, Pollard RE, Taylor SL, Chen RX, Nunley J, Kent MS. Perfusion and volume response of canine brain tumours to stereotactic radiosurgery and radiotherapy. *J Vet Intern Med.* 2016;30:827–35.
20. Treggiari E, Maddox TW, Goncalves R, Benoit J, Buchholz J. Blackwood Laura. Retrospective comparison of three-dimensional conformal radiation therapy vs. prednisolone alone in 30 cases of canine intracranial brain tumours. *Vet Radiol Ultrasound.* 2017;58:106–16.
21. Moirano SJ, Dewey CW, Wright KZ, Cohen PW. Survival times in dogs with presumptive intracranial gliomas treated with oral lomustine: a comparative retrospective study (2008-2017). *Vet Comp Oncol.* 2018;16:459–66.
22. VanMeerven S, Verhoeven PS, DeVos J, Gielen IMVL, Polis I, Van Ham LML. Comparison between symptomatic treatment and Lomustine supplementation in 71 dogs with intracranial, space-occupying lesions. *Vet Comp Oncol.* 2012;12:67–77.
23. Rossmeisl JH, Jones JC, Zimmerman KL, Robertson JL. Survival time following hospital discharge in dogs with palliatively treated primary brain tumours. *J Am Vet Med Assoc.* 2013;242:193–8.
24. Suñol A, Mascort J, Font C, Bastante AR, Pumarola M, Feliu-Pascal AL. Long-term follow-up of surgical resection alone for primary intracranial rostromedial tumours in dogs: 29 cases (2002-2013). *Open Vet J.* 2017;7:375–83.
25. Weller M, Wick W, Aldape K, et al. Glioma. *Nat Rev Dis Primers.* 2015;1:1–18.
26. Hu H, Barker A, Harcourt-Brown T, Jeffery N. Systematic review of brain tumour treatment in dogs. *J Vet Intern Med.* 2015;29:1456–63.
27. Monforte Monteiro SR, Rossmeisl JH, Russell J, Holmes MA, Wessmann A, Morris J, Dobson JM, Vanhaesebrouck AE. Effect of radiotherapy on freedom from seizures in dogs with brain tumours. *J Vet Intern Med.* 2020;34:1–7.
28. Rohrer Bley C, Meier V, Schwarz P, Roos M, Besserer J. A complication probability planning study to predict the safety of a new protocol for intracranial tumour radiotherapy in dogs. *Vet Comp Oncol.* 2017;15(4):1295–308.
29. Greene-Schloesser D, Robbins ME, Peiffer AM, Shaw EG, Wheeler KT, Chan MD. Radiation induced brain injury: a review. *Front Oncol.* 2012;2:1–18.
30. Van Asselt N, Christensen N, Meier V, Rohrer-Bley C, Laliberte S, Poirier V, Desai N, Chen Y, Turek M. Definitive-intent intensity-modulated radiation therapy provides similar outcomes to those previously published for definitive-intent three-dimensional conformal radiation therapy in dogs with primary brain tumours: a multi-institutional retrospective study. *Vet Radiol Ultrasound.* 2020;1:1–9.
31. Rodenas S, Pumarola M, Gaitero L, Zamora A, Anor S. Magnetic resonance imaging findings in 40 dogs with histologically confirmed intracranial tumours. *Vet J.* 2011;187:85–91.
32. Lipsitz D, Higgins RJ, Kortz GG, Dickinson PJ, Bollen AW, Naydan DK, Lecouteur RA. Glioblastoma multiforme: clinical findings, magnetic resonance imaging, and pathology in five dogs. *Vet Pathol.* 2003;40:659–69.
33. Bentley RT, Ober CP, Anderson KL, Feeney DA, Naughton JF, Ohlfest JR, O'Sullivan MG, Miller MA, Constable PD, Pluhar GE. Canine intracranial gliomas: relationship between magnetic resonance imaging criteria and tumour type and grade. *Vet J.* 2013;198:463–71.
34. Young BD, Levine JM, Porter BF, Chen-Allen AV, Rossmeisl JH, Platt SR, Kent M, Fosgate GT, Schatzberg SJ. Magnetic resonance imaging features of intracranial astrocytomas and oligodendrogliomas in dogs. *Vet Radiol Ultrasound.* 2011;52:132–41.
35. Brunner Singh J, Oevermann A, Lang J, Vandeveld M, Doherr M, Henke D, Gorgas D. Contrast media enhancement of intracranial lesions in magnetic resonance imaging does not reflect histopathologic findings consistently. *Vet Radiol Ultrasound.* 2011;52:619–26.
36. Stadler KL, Ruth JD, Pancotto TE, Were SR, Rossmeisl JH. Computed tomography and magnetic resonance imaging are equivalent in mensuration and similarly inaccurate in grade and type predictability of canine intracranial Gliomas. *Front Vet Sci.* 2017;4:1–7.
37. Rossmeisl JH, Garcia PA, Daniel GB, Bourland JD, Debinski W, Dervisis N, Klahn S. Invited review – neuroimaging response assessment criteria for brain tumours in veterinary patients. *Vet Radiol Ultrasound.* 2014;55:115–32.
38. Wolff CA, Holmes SP, Young BD, Chen AV, Kent M, Platt SR, Savage MY, Schatzberg SJ, Fosgate GT, Levine JM. Magnetic resonance imaging for the differentiation of neoplastic, inflammatory, and cerebrovascular brain disease in dogs. *J Vet Intern Med.* 2012;26:589–97.
39. Bentley RT. Magnetic resonance imaging diagnosis of brain tumours in dogs. *Vet J.* 2015;205:204–16.
40. Cervera V, Mai W, Vite CH, Johnson V, Dayrell-Hart B, Seiler G. Comparative magnetic resonance imaging findings between gliomas and presumed cerebrovascular accidents in dogs. *Vet Radiol Ultrasound.* 2011;52:33–40.
41. Young BD, Fosgate GT, Holmes SP, Wolff CA, Chen-Allen AV, Kent M, Platt SR, Savage MY, Schatzberg SJ, Levine JM. Evaluation of standard magnetic resonance characteristics used to differentiate neoplastic, inflammatory, and vascular brain lesions in dogs. *Vet Radiol Ultrasound.* 2014;55:399–406.
42. Garosi L. Cerebrovascular disease in dogs and cats. *Vet Clin Small Anim.* 2010;40:65–79.
43. Sutherland-Smith J, King R, Faissler D, Ruthazer R, Sato A. Magnetic resonance imaging apparent diffusion coefficients for histologically confirmed intracranial lesions in dogs. *Vet Radiol Ultrasound.* 2011;52:142–8.
44. Sheerin F, Pretorius PM, Briley D, Meagher T. Differential diagnosis of restricted diffusion confined to the cerebral cortex. *Clin Radiol.* 2008;63:1245–53.
45. Wisner ER, Dickinson PJ, Higgins RJ. Magnetic resonance imaging features of canine intracranial neoplasia. *Vet Radiol Ultrasound.* 2011;1:52–61.
46. Garosi L, McConnell JF, Platt SR, Barone G, De Lahunta A, Schatzberg SJ. Clinical and topographic magnetic resonance characteristics of suspected brain infarction in 40 dogs. *J Vet Intern Med.* 2006;20:311–21.
47. Wilfried M. Diagnostic MRI in dogs and cats. 1st ed. Boca Raton: Taylor and Francis Group; 2018.
48. Diangelo L, Cohen-Gadol A, Gan Heng H, Miller MA, Hague DW, Rossmeisl JH, Bentley RT. Glioma mimics: magnetic resonance imaging characteristics of granulomas in dogs. *Front Vet Sci.* 2019;6:1–10.
49. Coates JR, Jeffery ND. Perspectives in meningoencephalomyelitis of unknown origin. *Vet Clin Small Anim.* 2014;44:1157–85.
50. Platt S, Hicks J, Matiassek L. Intracranial intraarachnoid diverticula and cyst-like abnormalities of the brain. *Vet Clin Small Anim.* 2016;46:253–63.
51. Heidner GL, Kornegay JN, Page RL, Dodge RK, Thrall DE. Analysis of survival in a retrospective study of 86 dogs with brain tumours. *J Vet Intern Med.* 1991;5:219–26.
52. Nguyen SM, Thamm DH, Vail DM, London CA. Response evaluation criteria for solid tumours in dogs (v1.0): a Veterinary Cooperative Oncology Group (VCOG) consensus document. *Vet Comp Oncol.* 2015;13:176–83.
53. Ladue T, Klein MK. Toxicity criteria of the veterinary radiation therapy oncology group. *Vet Radiol Ultrasound.* 2001;42:475–6.

Publisher's Note

Springer Nature remains neutral with regard to jurisdictional claims in published maps and institutional affiliations.