

CORRIGENDUM

Corrigendum to ‘First-line nivolumab plus ipilimumab with 2 cycles of chemotherapy versus chemotherapy alone (4 cycles) in advanced non-small cell lung cancer: CheckMate 9LA 2-year update’



[ESMO Open Volume 6, Issue 5, October 2021, 100273]

M. Reck^{1*}, T.-E. Ciuleanu², M. Cobo³, M. Schenker⁴, B. Zurawski⁵, J. Menezes⁶, E. Richardet⁷, J. Bennaoui⁸, E. Felip⁹, O. Juan-Vidal¹⁰, A. Alexandru¹¹, H. Sakai¹², A. Lingua¹³, F. Reyes¹⁴, P.-J. Souquet¹⁵, P. De Marchi^{16†}, C. Martin¹⁷, M. Pérol¹⁸, A. Scherpereel¹⁹, S. Lu²⁰, L. Paz-Ares²¹, D. P. Carbone²², A. Memaj²³, S. Marimuthu²³, X. Zhang²³, P. Tran²³ & T. John²⁴

¹Department of Thoracic Oncology, Airway Research Center North, German Center for Lung Research, LungClinic, Grosshansdorf, Germany; ²Department of Oncology, Institutul Oncologic Prof Dr Ion Chiricuta and UMF Iuliu Hatieganu, Cluj-Napoca, Romania; ³Department of Medical Oncology, Unidad de Gestión Clínica Intercentros de Oncología Médica, Hospitales Universitarios Regional y Virgen de la Victoria, IBIMA, Málaga, Spain; ⁴Department of Oncology, SF Nectarie Oncology Center, Craiova, Romania; ⁵Department of Clinical Oncology, Ambulatorium Chemioterapii, Bydgoszcz, Poland; ⁶Department of Oncology, Hospital Nossa Senhora da Conceição, Porto Alegre, Brazil; ⁷Department of Clinical Oncology, Instituto Oncológico de Córdoba, Córdoba, Argentina; ⁸Department of Thoracic Oncology, University Hospital of Nantes and INSERM, CRCINA, Nantes, France; ⁹Department of Medical Oncology, Vall d’Hebron University Hospital, Vall d’Hebron Institute of Oncology, Barcelona; ¹⁰Department of Medical Oncology, Hospital Universitario La Fe, Valencia, Spain; ¹¹Department of Oncology, Institute of Oncology Prof Dr Alexandru Trestioreanu Bucha, Bucharest, Romania; ¹²Department of Thoracic Oncology, Saitama Cancer Center, Saitama, Japan; ¹³Department of Medical Oncology, Instituto Medico Rio Cuarto, SA, Córdoba, Argentina; ¹⁴Department of Medical Oncology, Fundación Arturo López Pérez, Santiago, Metropolitana, Chile; ¹⁵Department of Pneumology, Hôpital Lyon Sud, Lyon, Pierre Bénite, France; ¹⁶Department of Oncology, Barretos Cancer Hospital, Barretos, Brazil; ¹⁷Department of Thoracic Oncology, Instituto Alexander Fleming, Buenos Aires, Argentina; ¹⁸Department of Thoracic Oncology, Léon Bérard Cancer Center, Lyon; ¹⁹Department of Pulmonary and Thoracic Oncology, University of Lille, CHU Lille, INSERM U1189, OncoThAI, Lille, France; ²⁰Department of Medical Oncology, Shanghai Lung Cancer Center, Shanghai Chest Hospital, Shanghai JiaoTong University, Shanghai, China; ²¹Department of Medical Oncology, Hospital Universitario 12 de Octubre, CNIO-H12o Lung Cancer Clinical Research Unit, Universidad Complutense & CiberOnc, Madrid, Spain; ²²Department of Medical Oncology, The Ohio State University Comprehensive Cancer Center, Columbus; ²³Bristol Myers Squibb, Princeton, USA; ²⁴Department of Medical Oncology, Austin Hospital, Heidelberg, Australia

The authors regret that at the time the article was published there were some minor errors which have now been corrected.

In **Figure 4** (Grade 3/4 TRAE onset by treatment cycle), the numbers of patients at risk in the chemotherapy arm between cycles 21-22 and 31-32 were corrected as per the below.

DOI of original article: <https://doi.org/10.1016/j.esmoop.2021.100273>

*Correspondence to: Prof. Martin Reck, Department of Thoracic Oncology, Airway Research Center North, German Center for Lung Research, LungClinic, Wöhrendamm 80, 22927 Grosshansdorf, Germany. Tel: +04102/601-2101
E-mail: m.reck@lungenclinic.de (M. Reck).

†Affiliation at the time of the study.

2059-7029/© 2021 The Author(s). Published by Elsevier Ltd on behalf of European Society for Medical Oncology. This is an open access article under the CC BY-NC-ND license (<http://creativecommons.org/licenses/by-nc-nd/4.0/>).

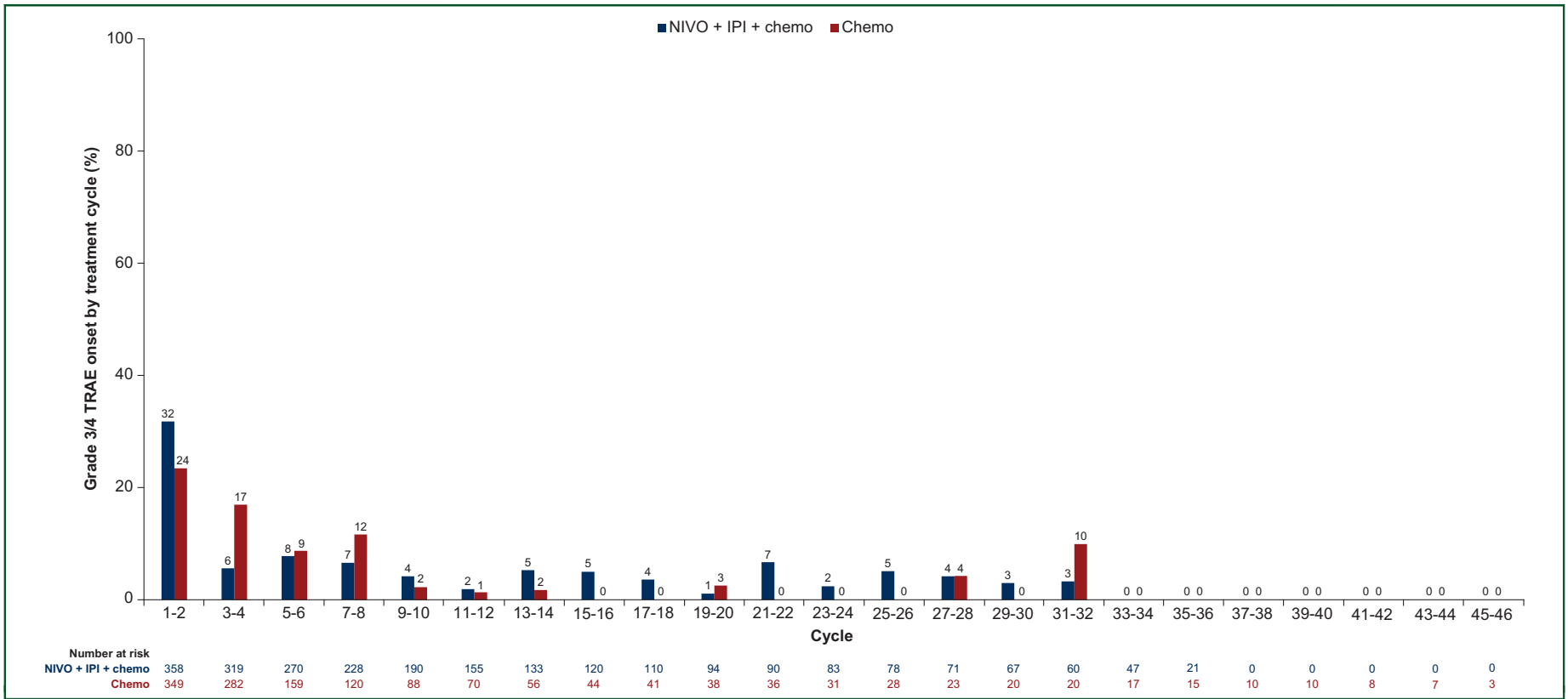


Figure 4. Grade 3/4 TRAE onset by treatment cycle. Chemo, chemotherapy; IPI, ipilimumab; NIVO, nivolumab; TRAE, treatment-related adverse event. Includes events reported between first dose and 30 days after last dose of study therapy. Overlapping TRAEs with same preferred term per patient were clustered and reported as unique TRAE. Patient is considered at risk in a pooled two-cycle reporting interval if exposed to any study drug in that interval. Patient is counted once in each TRAE grade category for each pooled two-cycle reporting interval with TRAE incidence.

In [Supplementary Figure S12](#) (Grade 1/2 TRAE onset by treatment cycle), the numbers of patients at risk in the chemotherapy arm between cycles 21-22 and 31-32 were corrected and a revised [Supplementary Data](#) file provided. The authors would like to apologize for any inconvenience caused.