

RESEARCH ARTICLE

Open Access



Improved haemodynamic stability and cerebral tissue oxygenation after induction of anaesthesia with sufentanil compared to remifentanil: a randomised controlled trial

Marieke Poterman^{1*} , Alain F. Kalmar^{1,2}, Pieter L. Buisman¹, Michel M. R. F. Struys¹ and Thomas W. L. Scheeren¹

Abstract

Background: Balanced anaesthesia with propofol and remifentanil, compared to sufentanil, often decreases mean arterial pressure (MAP), heart rate (HR) and cardiac index (CI), raising concerns on tissue-oxygenation. This distinct haemodynamic suppression might be attenuated by atropine. This double blinded RCT, investigates if induction with propofol-sufentanil results in higher CI and tissue-oxygenation than with propofol-remifentanil and if atropine has more pronounced beneficial effects on CI and tissue-oxygenation in a remifentanil-based anaesthesia.

Methods: In seventy patients scheduled for coronary bypass grafting (CABG), anaesthesia was induced and maintained with propofol target controlled infusion (TCI) with a target effect-site concentration (Cet) of $2.0 \mu\text{g ml}^{-1}$ and either sufentanil (TCI Cet 0.48 ng ml^{-1}) or remifentanil (TCI Cet 8 ng ml^{-1}). If HR dropped below 60 bpm, methylatropine (1 mg) was administered intravenously. Relative changes (Δ) in MAP, HR, stroke volume (SV), CI and cerebral (SctO₂) and peripheral (SptO₂) tissue-oxygenation during induction of anaesthesia and after atropine administration were analysed.

Results: The sufentanil group compared to the remifentanil group showed significantly less decrease in MAP ($\Delta = -23 \pm 13$ vs. -36 ± 13 mmHg), HR ($\Delta = -5 \pm 7$ vs. -10 ± 10 bpm), SV ($\Delta = -23 \pm 18$ vs. -35 ± 19 ml) and CI ($\Delta = -0.8$ (-1.5 to -0.5) vs. -1.5 (-2.0 to -1.1) $\text{l min}^{-1} \text{ m}^{-2}$), while SctO₂ ($\Delta = 9 \pm 5$ vs. $6 \pm 4\%$) showed more increase with no difference in ΔSptO_2 ($\Delta = 8 \pm 7$ vs. $8 \pm 8\%$). Atropine caused higher ΔHR (13 (9 to 19) vs. 10 ± 6 bpm) and ΔCI (0.4 ± 0.4 vs. 0.2 ± 0.3 $\text{l min}^{-1} \text{ m}^{-2}$) in sufentanil vs. remifentanil-based anaesthesia, with no difference in ΔMAP , ΔSV and ΔSctO_2 and ΔSptO_2 .

Conclusion: Induction of anaesthesia with propofol and sufentanil results in improved haemodynamic stability and higher SctO₂ compared to propofol and remifentanil in patients having CABG. Administration of atropine might be useful to counteract or prevent the haemodynamic suppression associated with these opioids.

Trial registration: [Clinicaltrials.gov](https://clinicaltrials.gov) on June 7, 2013 (trial ID: [NCT01871935](https://clinicaltrials.gov/ct2/show/study/NCT01871935)).

Keywords: Induction of anaesthesia, Sufentanil, Remifentanil, Atropine, Haemodynamics, Tissue oxygenation

* Correspondence: mpoterman@gmail.com

¹Department of Anaesthesiology, University Medical Center Groningen, Hanzeplein 1, PO Box 30 001, 9700, RB, Groningen, The Netherlands
Full list of author information is available at the end of the article



© The Author(s). 2020 **Open Access** This article is licensed under a Creative Commons Attribution 4.0 International License, which permits use, sharing, adaptation, distribution and reproduction in any medium or format, as long as you give appropriate credit to the original author(s) and the source, provide a link to the Creative Commons licence, and indicate if changes were made. The images or other third party material in this article are included in the article's Creative Commons licence, unless indicated otherwise in a credit line to the material. If material is not included in the article's Creative Commons licence and your intended use is not permitted by statutory regulation or exceeds the permitted use, you will need to obtain permission directly from the copyright holder. To view a copy of this licence, visit <http://creativecommons.org/licenses/by/4.0/>. The Creative Commons Public Domain Dedication waiver (<http://creativecommons.org/publicdomain/zero/1.0/>) applies to the data made available in this article, unless otherwise stated in a credit line to the data.

Background

Balanced general anaesthesia with a combination of propofol and remifentanyl, as compared to propofol with other opioids like sufentanil, provides some beneficial pharmacological properties, such as a fast and reliable induction and reversal of anaesthesia, swift postoperative recovery and avoidance of postoperative nausea and vomiting [1, 2]. However, vasodilation and cardiac depression caused by this type of anaesthesia often induces a decrease in mean arterial pressure (MAP), heart rate (HR) and cardiac index (CI), raising concerns on maintaining an adequate tissue oxygenation [3–5].

Haemodynamic suppression is often observed after induction of general anaesthesia with any combination of hypnotics and opioids. Because of the distinct pharmacodynamic differences of remifentanyl compared to other opioids such as sufentanil or fentanyl, different haemodynamic side effects may occur with differential effects on tissue oxygenation [6–8]. In addition to a strong suppressive effect on the heart rate, remifentanyl dose-dependently depresses the sinus and AV node function, and significantly prolongates the sinus node recovery time, sino-atrial conduction time and Wenckebach cycle length, resulting in an inhibition of both the intra-atrial conduction and sinus node automaticity [7, 8]. This distinct effect of remifentanyl on cardiac conduction might have a particularly significant negative impact on the cardiac index compared to sufentanil.

Perioperative maintenance of adequate tissue oxygenation has been associated with less postoperative complications, such as reduction in surgical wound infections and length of hospital stay, and is specifically important for high-risk surgical patients, including patients scheduled for coronary artery bypass grafting surgery [9–11].

Beneficial effects of atropine, not only on MAP and HR, but also on CI during propofol-remifentanyl anaesthesia in patients undergoing non-cardiac surgery have been reported [12]. However, this may not be equally valid during anaesthesia with propofol combined with other opioids, such as sufentanil, and in patients undergoing cardiac surgery. Positive inotropic agents such as dopamine, dobutamine or ephedrine are in general preferably used in cardiac surgery. However, the prominent effect of remifentanyl on the cardiac conduction suggests that it has a direct parasympathomimetic effect, thereby making a beneficial effect of atropine more likely. In these circumstances, atropine may not only mitigate bradycardia and increase the arterial blood pressure, but also increase CI and tissue oxygenation.

We therefore hypothesised that induction of anaesthesia with propofol and sufentanil results in different haemodynamic suppression and tissue oxygenation values compared to anaesthesia with propofol and remifentanyl in calculated equipotent dosages. Also, we expected that

atropine will have different effects on the haemodynamic suppression and tissue oxygenation in both groups.

Methods

Ethical approval for this study was provided by the Ethical Committee of University Medical Center Groningen, Groningen, The Netherlands. After registration at [ClinicalTrials.gov](https://clinicaltrials.gov) (Ref: NCT01871935), all patients ≥ 18 years scheduled for elective off-pump performed Coronary Artery Bypass Grafting (CABG) surgery between 17 June 2013 and 1 October 2013 were assessed for eligibility for this interventional, prospective randomised controlled trial according to the CONSORT group statement (Fig. 1) [13]. Patients undergoing emergency surgery or with a contraindication for atropine administration, such as severe aortic valve stenosis, were excluded. In addition, morbidly obese patients (body mass index $> 35 \text{ kg m}^{-2}$) were excluded, since anaesthesia with target controlled infusion (described below) in this patient category is not reliable [14]. There was no selection made based on age, gender, co-morbidity or ethnic background. Following written informed consent, all included patients were randomly assigned to the sufentanil or remifentanyl group using the sealed opaque envelope technique. Randomisation was unblinded only after finishing the full data collection. The complete study adhered to CONSORT guidelines [13].

Study protocol

Based on theoretical drug interaction pharmacodynamic models [15], for propofol/sufentanil and propofol/remifentanyl, equipotent opioid targeted effect site concentrations (Cet) were calculated to be 0.48 ng ml^{-1} (Gepts model) and 8 ng ml^{-1} (Minto model) respectively.

Before induction of anaesthesia, adequate pre-oxygenation of the patient's lungs was performed via a face mask. Anaesthesia was induced as follows: according to randomisation, a syringe pump with sufentanil (target-controlled infusion (TCI), targeted effect site concentration (Cet) 0.48 ng ml^{-1} , Gepts model) or dose of remifentanyl (TCI Cet 8 ng ml^{-1} , Minto model) was started, followed in both cases by a syringe pump containing propofol (TCI Cet $2.0 \text{ } \mu\text{g ml}^{-1}$, Schnider model) [16–18].

Doses were left unchanged throughout the study period. Maximal reproducibility of the anaesthetic pharmacological condition was pursued by using these propofol and opioids effect site concentrations to obtain a tolerance of laryngoscopy in 95% of patients as predicted by a hierarchical interaction model [3, 19, 20]. After loss of consciousness and achievement of a bispectral index value between 40 and 60, rocuronium (0.6 mg kg^{-1}) was administered and the patient's trachea was intubated. Mechanical ventilation was started in the volume control mode (tidal volume: 8 ml kg^{-1}) with an $\text{O}_2/$

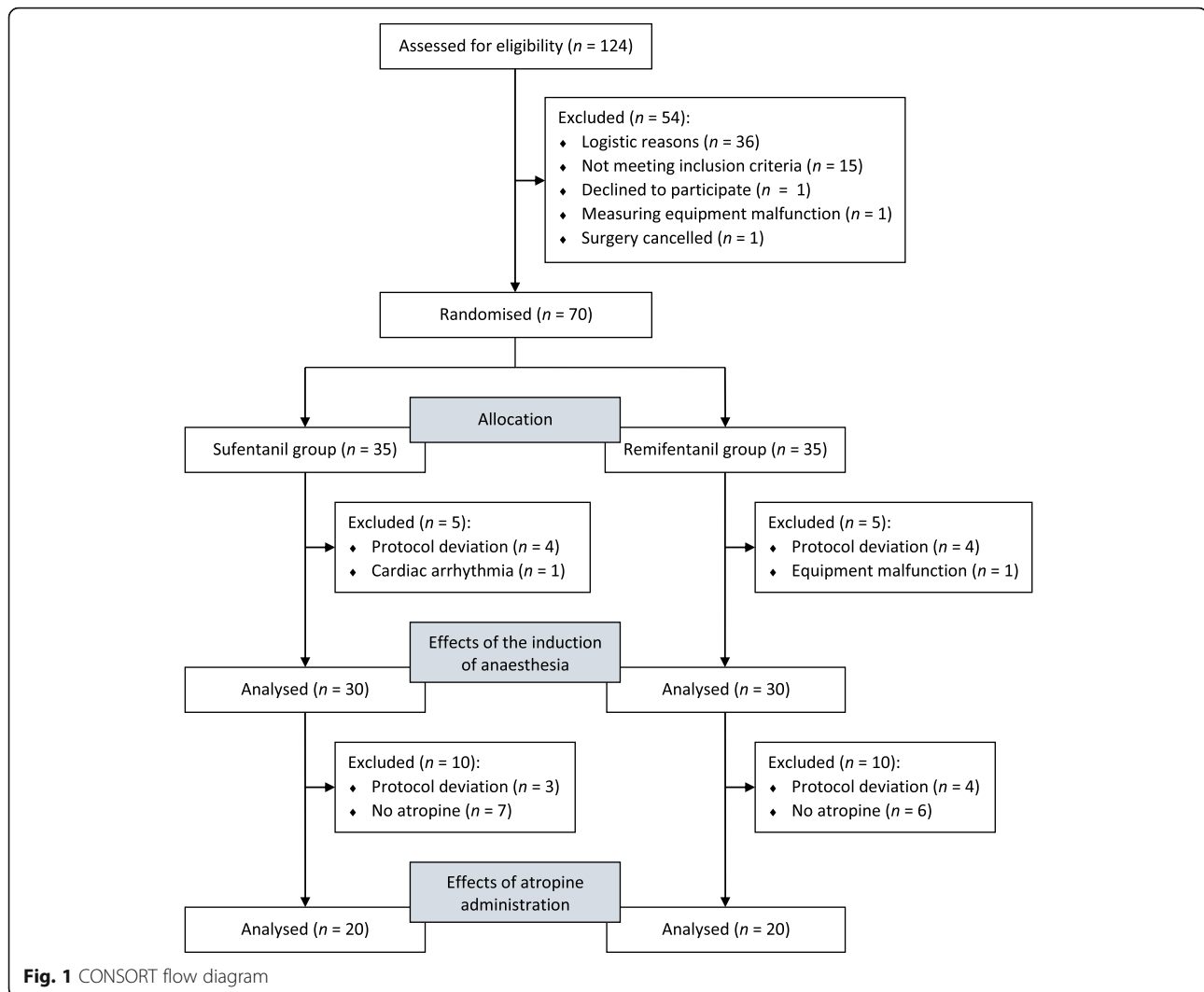


Fig. 1 CONSORT flow diagram

air mixture (F_iO_2 0.4) and a positive end-expiratory pressure of 5 cmH₂O. The respiratory rate was adjusted to keep end-tidal carbon dioxide partial pressure between 4.5 kPa (34 mmHg) and 5.5 kPa (42 mmHg).

If the HR dropped below 60 beats per minute (bpm), methylatropine (1 mg) was administered intravenously. In those cases where the patient had a baseline HR < 60 bpm prior to the induction of anaesthesia, methylatropine (1 mg) was administered when HR dropped more than 10% below the awake HR value.

If the MAP dropped below 80% of the baseline value, without the above-mentioned indications for administration of atropine or from 3 min after the administration of atropine, other appropriate measures (e.g. fluid or vasopressor administration) were taken.

Haemodynamic monitoring

Upon arrival in the operating theatre standard monitoring equipment was connected to the patient: ECG, pulse

oximetry and non-invasive blood pressure monitoring (Philips IntelliVue MX800, Philips, Eindhoven, The Netherlands) and routine physiological measurements and monitoring was started. Subsequently two large peripheral intravenous cannulas and an invasive arterial catheter were inserted for invasive blood pressure monitoring, as is usual practice in cardiothoracic anaesthesia.

In addition, a FloTrac sensor (Edwards Lifesciences, Irvine, United States) was connected to the arterial line and subsequently to the Vigileo monitor (Edwards Lifesciences). The FloTrac-Vigileo system analysis the arterial pressure waveform for calculation of the stroke volume (SV) and CI [21]. Two INVOS™ Cerebral Oximeter (Medtronic, Minneapolis, United States) sensors were placed on the patients' forehead to record cerebral tissue oxygenation (SctO₂) [22] and an InSpectra™ (Hutchinson Technology Inc., Hutchinson, United States) probe was positioned on the thenar eminence to measure the peripheral tissue oxygenation (SptO₂) [23].

Both devices rely on near-infrared spectroscopy technology [24]. Briefly, the sensors positioned on the patient's skin emit light in several device-specific wavelengths from the near infrared spectrum. Based on the ratio of oxygenated and deoxygenated haemoglobin in the underlying tissue, these light signals are partially absorbed and partially reflected to the sensors [25]. Changes relative to baseline tissue oxygenation are significantly correlated with oxygen delivery and perfusion deficits [26].

Data registration and analysis

All data from routine physiological measurements and from the additional study devices were recorded continuously (sampling rate of 1 Hz) on the central hospital server using a cardiothoracic specific data management system (Carola, University Medical Center Groningen, Groningen, The Netherlands).

The electronic data were imported into Microsoft Excel 2016® (Microsoft, Redmond, United States) for synchronization and analysis. After graphical representation, absent values caused by artifacts were corrected by interpolation during a visual inspection of the data plots. Subsequently, we calculated the rate pressure product (RPP) by multiplying the systolic arterial pressure and heart rate. RPP is a surrogate measure of myocardial oxygen uptake [27, 28].

Additionally, a 30 s running median with 15 s steps was calculated for all studied variables. The evolution of the absolute values and of the changes relative to baseline was plotted from 1 min before the induction of anaesthesia until 6 min afterwards, and from 1 min before the administration of atropine until 4 min afterwards. This covers the time to achieve relative steady state for all study variables.

Statistical analysis

The primary outcome measure was the change in CI around the moment of atropine administration. Secondary outcome measures were the changes in MAP, SctO₂ and SptO₂. The sample size calculation was based on the primary endpoint, CI. A mean difference in CI of 10% between sufentanil and remifentanil was considered clinically relevant. We expected the standard deviation to be 10% in both groups. A type I error probability of 0.05 and a power of 0.95 delivers a total sample size of 54 [29]. A supplemental 25% of patients were included in each group to anticipate invalid data recordings and patients not meeting the criteria for atropine administration, making a total of 70 patients (35 patients in each group).

Statistical analysis was performed in SPSS version 23 (IBM Corporation, Armonk, United States). Categorical variables are given as number of patients and analysed

with the Chi-square test or the Fisher's exact test. Continuous data are expressed as mean ± SD or median (IQR), depending on the Kolmogorov-Smirnov tested normality. Differences between groups were tested on absolute values during the induction of anaesthesia and during atropine administration, Time = 0 min (T₀), and at the moment of steady state (after the time to peak of propofol, sufentanil and remifentanil or atropine [30, 31], Time = 6 min (T₆) for the induction of anaesthesia and Time = 4 min (T₄) for the administration of atropine, and on relative changes (Δ = value (T₆ or T₄) – value (T₀)). To compare continuous variables of the different groups, the unpaired student *t*-test was used for parametric variables, and the Mann-Whitney *U* test for non-parametric variables. Comparison of the values of the haemodynamic variables from the same group between T₀ and T₆ (for the induction of anaesthesia) or T₄ (for the administration of atropine) was performed using a paired *t*-test and Wilcoxon signed rank test for parametric and non-parametric variables, respectively. Two-tailed tests were performed and statistical significance was defined as *P* < 0.05 (after Bonferroni correction for multiple comparisons) in all cases.

Results

A total of 70 patients were included in this double blind, randomised controlled trial and subsequently allocated to the sufentanil or remifentanil group (Fig. 1). From these, we had to exclude 10 patients before the analysis of the haemodynamic effects of the induction of anaesthesia due to deviation from the study protocol (*n* = 8), cardiac arrhythmia (*n* = 1) or measuring equipment malfunction (*n* = 1). An additional 20 patients were excluded from the analysis of the effects of atropine administration by reason of study protocol deviation (*n* = 7) and not meeting the criteria for atropine administration (*n* = 13). Protocol deviations comprises usage of a different dose of hypnotics and/or opioids than described in the protocol, additions to anaesthesia (e.g. volatile anaesthesia) or the use of additional haemodynamic support (fluid or vasopressor administration) during the measurement periods (from 1 min before induction of anaesthesia or administration of atropine until respectively 6 or 4 min thereafter). Table 1 shows the baseline characteristics of the patients per analysis in both groups. American Society of Anaesthesiologists classification of Physical Health was not included in this table, because all patients belong to American Society of Anaesthesiologists class III. There were no significant between-group differences for both analyses.

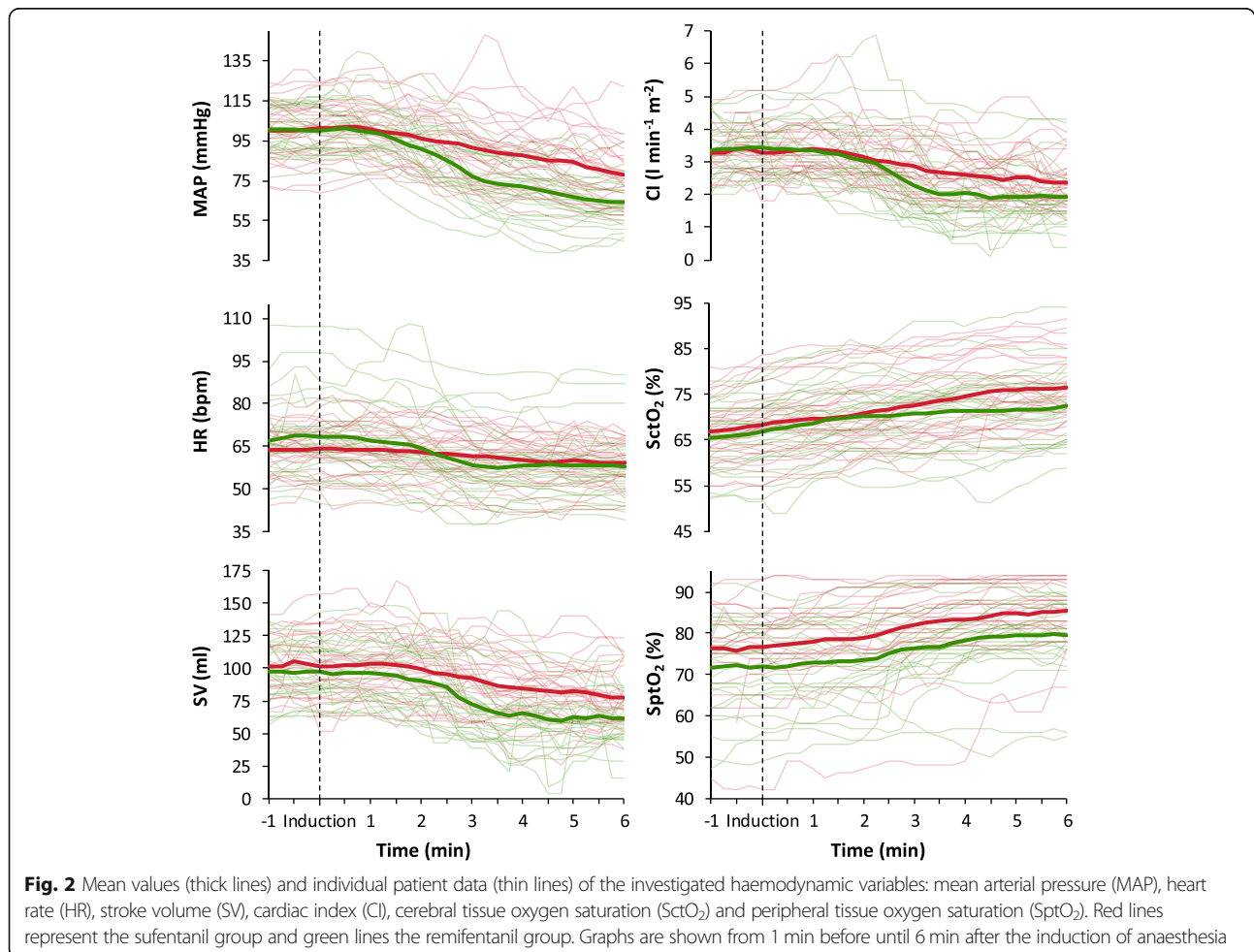
Haemodynamic effects after the induction of anaesthesia

The course over time of the investigated variables after the induction of anaesthesia is shown in Figs. 2 and 3.

Table 1 Baseline characteristics of the patients per analysis in the sufentanil and remifentanil group

	Induction of anaesthesia		Atropine administration	
	Sufentanil (n = 30)	Remifentanil (n = 30)	Sufentanil (n = 20)	Remifentanil (n = 20)
Age (years)	64 ± 8	67 ± 8	66 ± 9	70 ± 7
Sex, male	23	23	18	16
Height (cm)	174 ± 10	174 ± 11	175 ± 8	175 ± 11
Weight (kg)	81 ± 16	78 ± 11	82 ± 14	83 ± 11
BMI (kg m ⁻²)	27 ± 4	26 ± 3	27 ± 4	27 ± 3
Medical history				
Arterial hypertension	20	21	13	15
Peripheral vascular disease	4	2	4	0
Diabetes mellitus	11	7	8	5
Chronic obstructive pulmonary disease	8	8	6	4
Relevant medication				
Beta blocking agents	27	29	18	18
Angiotensin receptor blockers	7	4	6	1
Angiotensin-converting enzyme inhibitors	14	19	9	13

Continuous variables are reported as mean ± SD and categorical data as numbers



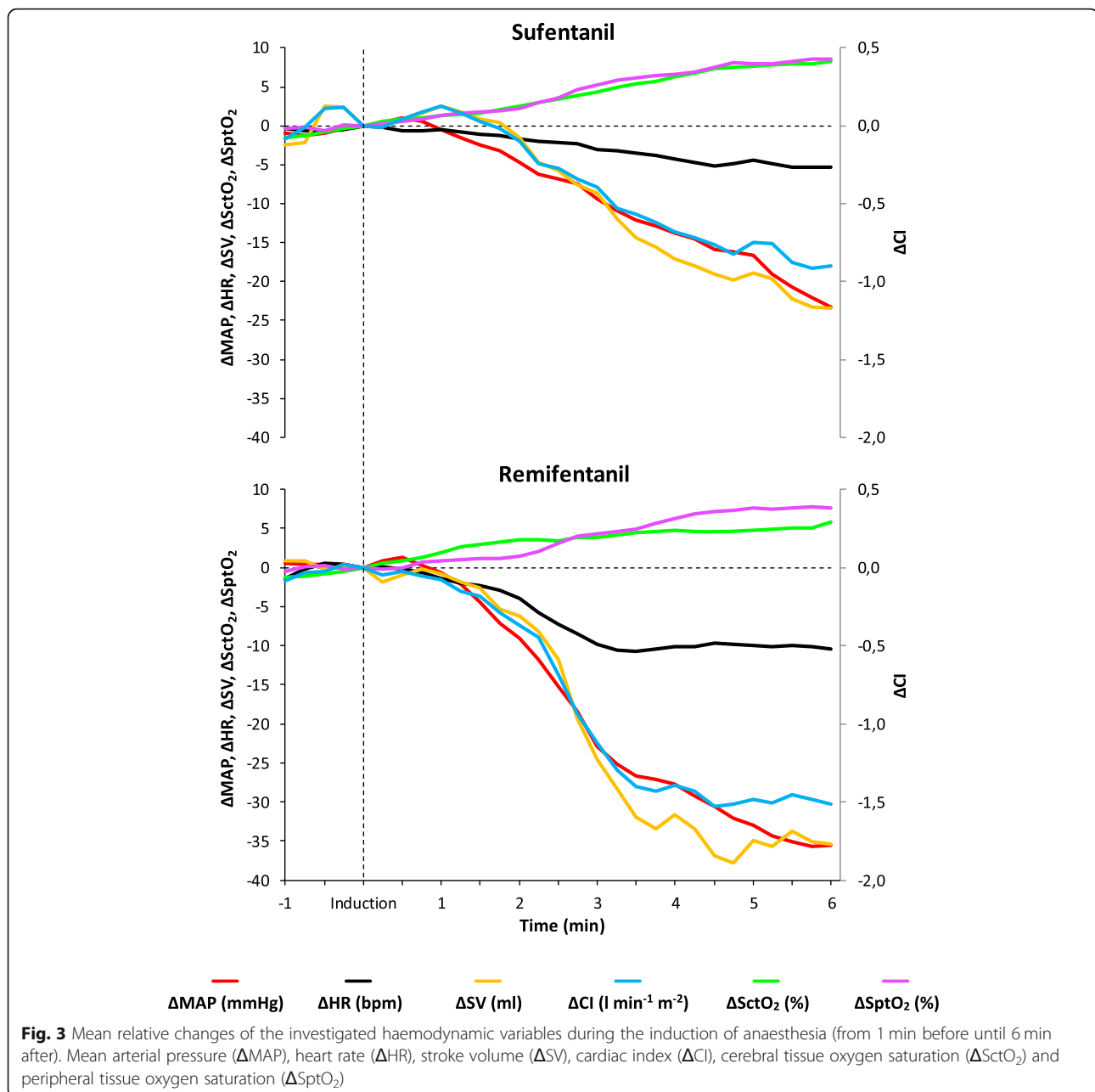


Table 2 shows all haemodynamic data. Both in the sufentanil group and in the remifentanil group MAP, HR, SV, CI, and RPP were significantly decreased 6 min after induction (T_6) as compared to baseline (T_0). In contrast, SctO₂ and SptO₂ were significantly increased between T_0 and T_6 . Between-groups comparison (sufentanil vs. remifentanil) of the mean relative changes showed less decrease in: MAP ($\Delta = -23 \pm 13$ vs. -36 ± 13 mmHg; $P < 0.001$), HR ($\Delta = -5 \pm 7$ vs. -10 ± 10 bpm; $P = 0.025$), SV ($\Delta = -23 \pm 18$ vs. -35 ± 19 ml; $P = 0.017$), CI ($\Delta = -0.8$ (-1.5 to -0.5) vs. -1.5 (-2.0 to -1.1) l min⁻¹ m⁻²; $P = 0.002$) and RPP ($\Delta = -3077 \pm 2010$ vs.

-5002 ± 2369 mmHg bpm; $P = 0.001$) and a larger increase in SctO₂ ($\Delta = 9 \pm 5$ vs. 6 ± 4 %; $P = 0.040$) in the sufentanil group compared to the remifentanil group. The mean relative changes in SptO₂ ($\Delta = 8 \pm 7$ vs. 8 ± 8 %; $P = 0.641$) did not differ significantly between groups.

Haemodynamic effects after the administration of atropine

Seventy-seven percent of the patients in the sufentanil group and 80 % in the remifentanil group received atropine. The course of the investigated

Table 2 Haemodynamic data in the sufentanil and remifentanil group after the induction of anaesthesia

		T ₀	T ₆	Δ	P - value*
MAP (mmHg)	Sufentanil	101 ± 15	78 ± 15	-23 ± 13	< 0.001
	Remifentanil	100 ± 11	65 ± 11	-36 ± 13	< 0.001
HR (bpm)	Sufentanil	64 ± 9	59 ± 8	-5 ± 7	< 0.001
	Remifentanil	68 ± 14	58 ± 12	-10 ± 10	0.001
SV (ml)	Sufentanil	101 ± 25	78 ± 21	-23 ± 18	< 0.001
	Remifentanil	97 ± 21	62 ± 21	-35 ± 19	< 0.001
CI (l min ⁻¹ m ⁻²)	Sufentanil	3.2 (2.7 to 3.9)	2.3 (1.8 to 2.8)	-0.8 (-1.5 to -0.5)	< 0.001
	Remifentanil	3.5 (2.7 to 3.9)	1.8 (1.4 to 2.3)	-1.5 (-2.0 to -1.1)	< 0.001
RPP (mmHg bpm)	Sufentanil	10,004 ± 2200	6928 ± 1893	-3077 ± 2010	< 0.001
	Remifentanil	10,730 ± 2444	5728 ± 1845	-5002 ± 2369	< 0.001
SctO ₂ (%)	Sufentanil	68 ± 8	77 ± 7	9 ± 5	< 0.001
	Remifentanil	67 ± 7	73 ± 8	6 ± 4	< 0.001
SptO ₂ (%)	Sufentanil	77 ± 10	85 ± 7	8 ± 7	< 0.001
	Remifentanil	72 ± 11	80 ± 9	8 ± 8	< 0.001

Variables are reported as mean ± SD or median (IQR), according to data distribution

Δ: value (T₆) - value (T₀); MAP Mean Arterial Pressure; HR Heart Rate; SV Stroke Volume; CO Cardiac Output; SctO₂ Cerebral Tissue Oxygen Saturation; SptO₂ Peripheral Tissue Oxygen Saturation

* (T₆ vs. T₀), paired *t*-test or Wilcoxon signed rank test

variables after the administration of atropine is shown in Figs. 4 and 5. Table 3 shows all haemodynamic data. In both groups HR, CI, and RPP were significantly increased compared to baseline (T₀). SctO₂ significantly decreased compared to baseline (T₀) in the remifentanil group, but not in the sufentanil group. Between-groups comparison (sufentanil vs. remifentanil) of the mean relative changes showed more increase in: HR (Δ = 13 (9 to 19) vs. 9 (6 to 14) bpm; *P* = 0.016), CI (Δ = 0.4 ± 0.4 vs. 0.2 ± 0.3 l min⁻¹ m⁻²; *P* = 0.023) and RPP (Δ = 1584 ± 1413 vs. 810 ± 917 mmHg bpm; *P* = 0.027) in the sufentanil group after atropine administration. MAP, SV and tissue oxygenation values were equal in both groups during measurements. Maximum RPP during the measurement period was 12,556 mmHg bpm.

Discussion

This prospective double-blind randomised controlled trial demonstrates that induction of anaesthesia with propofol and sufentanil results in less haemodynamic suppression than induction of anaesthesia with propofol and a calculated equivalent dosage of remifentanil, combined with more pronounced positive effect on SctO₂ values in the sufentanil group. Administration of atropine reversed bradycardia and thus maintained haemodynamics and tissue oxygenation with no (clinically) relevant between-groups differences.

After the induction of anaesthesia with comparable doses of opioids, remifentanil did not only cause a more evident decrease in HR, but also in SV. Remifentanil is well known for its direct bradycardic effects, especially compared to other opioids, but not for the negative effect on SV [6, 12]. As a result of a decreased HR, an increase in SV would typically be expected, due to a longer diastolic filling time. This more pronounced decrease in SV in the remifentanil group might be explained by a stronger direct negative inotropic effect of remifentanil, different changes in cardiac preload, or pharmacokinetic differences between both opioids. A larger decrease in HR and SV in the remifentanil group however resulted in a much larger decrease in MAP and CI, and thereby overall more haemodynamic suppression than in the sufentanil group. Furthermore, patients in the remifentanil group demonstrated lower SctO₂ values. During induction of anaesthesia, a raised inspired oxygen fraction combined with general vasodilation results in an overall increased tissue oxygenation [12]. Despite this, the more pronounced haemodynamic suppression in the remifentanil group led to lower SctO₂ values than in the sufentanil group. This difference could only be demonstrated in terms of absolute SptO₂ values, but not in the mean relative values. Also, anaesthesia with more stable haemodynamics, like with sufentanil, will clinically lead to less use of vasoactive medication, e.g. norepinephrine, and thereby less additional haemodynamic suppression and possibly higher tissue oxygenation values [5].

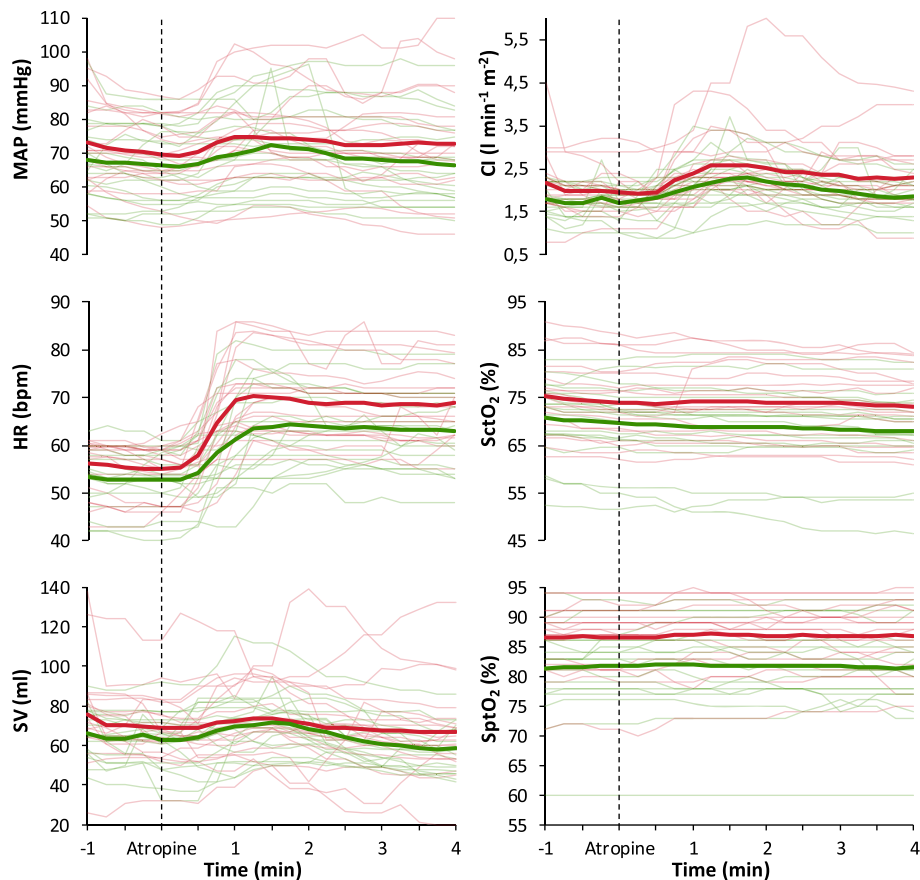
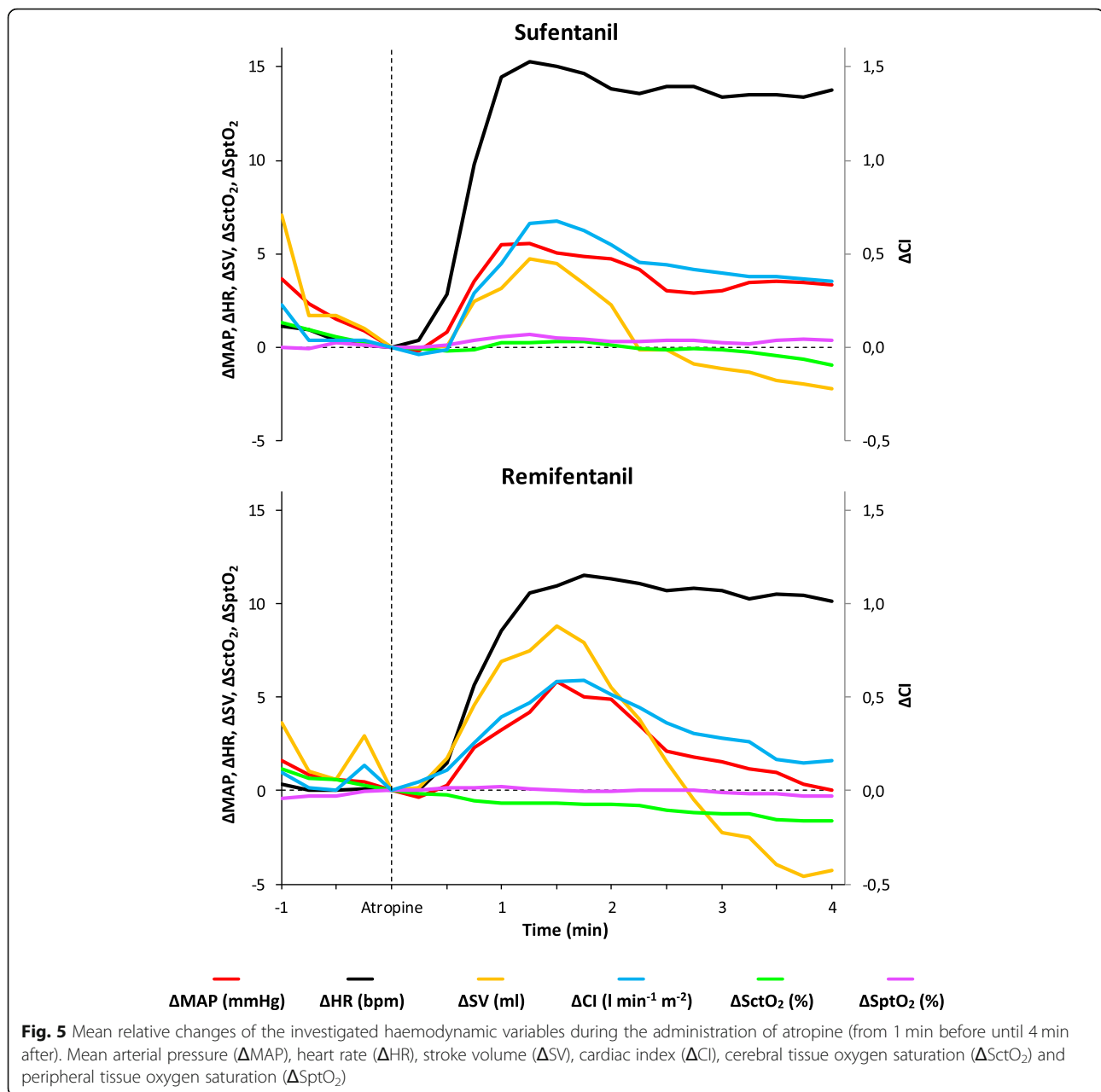


Fig. 4 Mean values (thick lines) and individual patient data (thin lines) of the investigated haemodynamic variables: mean arterial pressure (MAP), heart rate (HR), stroke volume (SV), cardiac index (CI), cerebral tissue oxygen saturation (SctO₂) and peripheral tissue oxygen saturation (SptO₂). Red lines represent the sufentanil group and green lines the remifentanil group. Graphs are shown from 1 min before until 4 min after the administration of atropine

Contrary to our hypothesis, administration of atropine did not result in better attenuation of the haemodynamic suppression caused by remifentanil or higher tissue oxygenation values compared to anaesthesia with sufentanil. Although only demonstrated in absolute values, the sufentanil group showed higher HR and remarkably higher CI values than the remifentanil group. Compared to other opioids, remifentanil evokes a dose dependent prolongation of the cardiac conduction times (by influencing the sinus and atrioventricular node and intra-atrial conduction), inhibition of sinoatrial automaticity and vagally mediated inotropic effects [7, 32]. In accordance with previous observations, we expected more distinct positive effects of atropine on the haemodynamic variables and tissue oxygenation during remifentanil based anaesthesia [12]. However, in our previous study from non-cardiac surgery, none of the patients were on beta-blocking agents, as opposed to the 90% in both of the groups of the

current study, which exclusively included patients with ischemic heart disease. Our results show that, not only in patients with extreme bradycardia, atropine significantly improves cardiac index and blood pressure in many cases, which may in clinical practice often obviate the necessity for further interventions such as starting a syringe pump with vasopressive medication. Unfortunately, the methodology of this study did not permit to show any outcome improvement. This was, however not the purpose of the study; the objective was to demonstrate that atropine (especially in remifentanil-based anaesthesia) can induce a significant increase in blood pressure and cardiac output (CO), allegedly by counteracting the parasympathicomimetic effects of the opiates.

Administering atropine in patients undergoing CABG could lead to certain objections, since all of the patients suffer from coronary artery disease. An unwanted increase in HR can result in an increase



in the RPP, which is a measure of the internal workload of the heart and a direct indication of the myocardial oxygen demand. However, maximum RPP during the measurement period after the atropine administration was 12,556 mmHg bpm. This value corresponds with a low internal workload and thus indicates a low myocardial oxygen consumption, probably owing to the patients being under anaesthesia [26, 27]. Also, none of the closely monitored patients showed signs of cardiac ischemia. Other contraindications for the use of atropine, like severe aortic valve stenosis, were covered in the exclusion criteria.

There are certain study limitations that need to be addressed. Firstly, equipotent doses of the used opiates are so far not reliably determined in the literature and consequently, we were limited to calculated equipotent doses based on interaction models. Although we consider that these values sufficiently reliably represent clinical reality, different observations may occur depending on opiate doses. Secondly, we used the FloTrac-Vigileo system for the recording of the course of the SV and CI after the induction of anaesthesia and after atropine administration. These variables are calculated via arterial pressure waveform analysis, which leads to a certain inevitable

Table 3 Haemodynamic data in the sufentanil and remifentanil group after atropine administration

		T ₀	T ₄	Δ	P - value*
MAP (mmHg)	Sufentanil	69 (63 to 81)	72 (67 to 80)	4 (-2 to 9)	0.101
	Remifentanil	67 (56 to 78)	64 (57 to 77)	1 (-2 to 6)	0.942
HR (bpm)	Sufentanil	57 (49 to 59)	70 (63 to 74)	13 (9 to 19)	< 0.001
	Remifentanil	53 (50 to 58)	64 (56 to 70)	9 (6 to 14)	< 0.001
SV (ml)	Sufentanil	69 ± 17	67 ± 23	-3 ± 10	0.253
	Remifentanil	63 ± 14	59 ± 12	-4 ± 11	0.110
CI (l min ⁻¹ m ⁻²)	Sufentanil	2.0 ± 0.5	2.3 ± 0.8	0.4 ± 0.4	0.001
	Remifentanil	1.7 ± 0.3	1.9 ± 0.4	0.2 ± 0.3	0.032
RPP (mmHg bpm)	Sufentanil	5590 ± 918	7173 ± 1589	1584 ± 1413	< 0.001
	Remifentanil	5204 ± 1053	6014 ± 1590	810 ± 917	0.001
SctO ₂ (%)	Sufentanil	73 (68 to 79)	73 (65 to 78)	-2 (-3 to 1)	0.120
	Remifentanil	72 (66 to 75)	69 (65 to 74)	-2 (-2 to -1)	0.005
SptO ₂ (%)	Sufentanil	88 (81 to 91)	88 (83 to 91)	1 (-1 to 2)	0.582
	Remifentanil	83 (78 to 86)	81 (77 to 86)	0 (-1 to 0)	0.471

Variables are reported as mean ± SD or median (IQR), according to data distribution

Δ: value (T₄) - value (T₀); MAP Mean Arterial Pressure; HR Heart Rate; SV Stroke Volume; CO Cardiac Output; SctO₂ Cerebral Tissue Oxygen Saturation; SptO₂ Peripheral Tissue Oxygen Saturation

* (T₄ vs. T₀), paired *t*-test or Wilcoxon signed rank test

inaccuracy. Previous studies show varying outcomes in agreement and trending ability when FloTrac-Vigileo calculated CO is compared with CO derived from the widely accepted reference method, i.e. thermodilution [19]. Consequently, to minimize measurement bias, we used relative (Δ) values instead of absolute values for the comparisons [33, 34].

Also, tissue oxygenation values based on near-infrared spectroscopy and measured during haemodynamic changes, like after induction of anaesthesia, should be interpreted with caution. Reduced skin blood flow and oxygenation, caused by vasoconstrictive medication, hyperventilation and hypoxia, has shown to influence measurement values to some extent [35, 36]. These results however could not be reproduced when norepinephrine was administered to treat postspinal hypotension [37]. Moreover, reduction in SctO₂ after vasoconstrictive medication has previously been correlated with a decrease in oxygen saturation measured at the level of the jugular venous bulb [38]. As a consequence, we have to assume that the changes in SctO₂ and SptO₂ we demonstrated are at least partially caused by changes in skin perfusion. Nevertheless, our data showed a much more evident increase in tissue oxygenation after induction of anaesthesia (6–9% increase), than reported as influence by a change in skin oxygen saturation (2–3% change) [35, 36].

Lastly, for the analysis of the effects of atropine on haemodynamics and tissue oxygenation we used a fixed dose of 1 mg. This could partially account for the (inter-individual) differences in the response of haemodynamic variables to the administration of atropine.

Conclusions

Induction of anaesthesia with propofol and sufentanil results in improved haemodynamic stability and higher cerebral tissue oxygenation compared to propofol and remifentanil in CABG patients. Administration of atropine might be useful to counteract or prevent the bradycardic action and thus haemodynamic suppression associated with these opioids.

Abbreviations

bpm: Beats per minute; CABG: Coronary artery bypass grafting; Cet: Effect-site concentration; CI: Cardiac index; CO: Cardiac output; HR: Heart rate; MAP: Mean arterial pressure; RCT: Randomised controlled trial; RPP: Rate pressure product; SctO₂: Cerebral tissue-oxygenation; SptO₂: Peripheral tissue-oxygenation; SV: Stroke volume; T₀: Time = 0 min; T₄: Time = 4 min; T₆: Time = 6 min; TCI: Target controlled infusion

Acknowledgements

Not applicable.

Authors' contributions

MP, AFK and TWLS were responsible for the study design. MP and PLB managed the inclusion of the participants. Together with TWLS they conducted all measurements. MP and PLB were responsible for data collection and analysis. MP and AFK interpreted the data and wrote the first draft of the manuscript. TWLS and MMRFS made substantial contributions to the final version of the manuscript and all revisions. All authors read and approved the final manuscript.

Funding

This study was solely supported by departmental funding.

Availability of data and materials

The datasets used and/or analysed during the current study are available from the corresponding author on reasonable request.

Ethics approval and consent to participate

Ethical approval for this study was provided by the Ethical Committee of University Medical Center Groningen, Groningen, The Netherlands (Reference: METc 2013/076). Written informed consents were obtained from all participants before inclusion.

Consent for publication

Not applicable.

Competing interests

MMRFS: His research group/department received (*over the last 3 years*) research grants and consultancy fees from The Medicines Company (Parsippany, NJ, USA), Masimo (Irvine, CA, USA), Fresenius (Bad Homburg, Germany), Dräger (Lübeck, Germany), Paion (Aachen, Germany), Medtronic (Dublin, Ireland). He receives royalties on intellectual property from Demed Medical (Temse, Belgium) and the Ghent University (Gent, Belgium). He is an editorial board member and Director for the British Journal of Anaesthesia and associated editor for Anesthesiology.

TWLS: his research group received research grants and honoraria from Edwards Lifesciences (Irvine, CA, USA) and Masimo Inc. (Irvine, CA, USA) for consulting and lecturing and from Pulsion Medical Systems SE (Feldkirchen, Germany) for lecturing.

The other authors declare no conflicts of interest.

Author details

¹Department of Anaesthesiology, University Medical Center Groningen, Hanzeplein 1, PO Box 30 001, 9700, RB, Groningen, The Netherlands.

²Department of Anaesthesiology, AZ Maria Middelaars Gent Buitenring Sint-Denijs 30, 9000 Ghent, Belgium.

Received: 15 May 2020 Accepted: 24 September 2020

Published online: 07 October 2020

References

- Beers R, Camporesi E. Remifentanyl update: clinical science and utility. *CNS Drugs*. 2004;18:1085–104.
- Hogue CW, Bowdle TA, O'Leary C, Duncalf D, Miguel R, Pitts M, Streisand J, Kirvassilis G, Jamerson B, McNeal S, Batenhorst R. A multicenter evaluation of total intravenous anesthesia with remifentanyl and propofol for elective inpatient surgery. *Anesth Analg*. 1996;83:279–85.
- Vos JJ, Poterman M, Hannivoort LN, Renardel De Lavalette VW, Struys MM, Scheeren TW, Kalmar AF. Hemodynamics and tissue oxygenation during balanced anesthesia with a high antinociceptive contribution: an observational study. *Perioper Med*. 2014;3:9.
- Elliott P, O'Hare R, Bill KM, Phillips AS, Gibson FM, Mirakhor RK. Severe cardiovascular depression with remifentanyl. *Anesth Analg*. 2000;91:58–61.
- Poterman M, Vos JJ, Vereecke HE, Struys MM, Vanoverschelde H, Scheeren TW, Kalmar AF. Differential effects of phenylephrine and norepinephrine on peripheral tissue oxygenation during general anaesthesia: a randomised controlled trial. *Eur J Anaesthesiol*. 2015;32:571–80.
- Wilhelm W, Biedler A, Huppert A, Kreuzer S, Bücheler O, Ziegenfuss T, Larsen R. Comparison of the effects of remifentanyl or fentanyl on anaesthetic induction characteristics of propofol, thiopental or etomidate. *Eur J Anaesthesiol*. 2002;19:350–6.
- Fujii K, Iranami H, Nakamura Y, Hatano Y. High-dose remifentanyl suppresses sinoatrial conduction and sinus node automaticity in pediatric patients under propofol-based anesthesia. *Anesth Analg*. 2011;112:1169–73.
- Del Blanco Narciso BB, Jimeno Fernandez C, Almendral Garrote J, Anadon Baselga MJ, Zaballos GM. Effects of remifentanyl on the cardiac conduction system. Our experience in the study of remifentanyl electrophysiological properties. *Curr Pharm Des*. 2014;20:5489–96.
- Jhanji S, Lee C, Watson D, Hinds C, Pearce RM. Microvascular flow and tissue oxygenation after major abdominal surgery: association with post-operative complications. *Intensive Care Med*. 2009;35:671–7.
- Belda FJ, Aguilera L, García de la Asunción J, Alberti J, Vicente R, Ferrándiz L, Rodríguez R, Company R, Sessler DI, Aguilar G, Botello SG, Ortí R. Supplemental perioperative oxygen and the risk of surgical wound infection: a randomized controlled trial. *JAMA*. 2005;294:2035–42.
- Pearse RM, Harrison DA, James P, Watson D, Hinds C, Rhodes A, Grounds RM, Bennett ED. Identification and characterisation of the high-risk surgical population in the United Kingdom. *Crit Care*. 2006;10:R81.
- Poterman M, Scheeren TWL, van der Velde MI, Buisman PL, Allaert S, Struys MMRF, Kalmar AF. Prophylactic atropine administration attenuates the negative haemodynamic effects of induction of anaesthesia with propofol and high-dose remifentanyl: a randomised controlled trial. *Eur J Anaesthesiol*. 2017;34:695–701.
- Schulz KF, Altman DG, Moher D, CONSORT Group. CONSORT 2010 Statement: updated guidelines for reporting parallel group randomised trials. *BMC Med*. 2010;8:18.
- La Colla L, Albertin A, La Colla G, Porta A, Aldegheri G, Di Candia D, Gigli F. Predictive performance of the 'Minto' remifentanyl pharmacokinetic parameter set in morbidly obese patients ensuing from a new method for calculating lean body mass. *Clin Pharmacokinet*. 2010;49:131–9.
- Hannivoort LN, Vereecke HEM, Proost JH, Heyse BEK, Eleveld DJ, Bouillon TW, Struys MMRF, Luginbühl M. Probability to tolerate laryngoscopy and noxious stimulation response index as general indicators of the anaesthetic potency of sevoflurane, propofol, and remifentanyl. *Br J Anaesth*. 2016;116:624–31.
- Gepts E, Shafer SL, Camu F, Stanski DR, Woestenborghs R, Van Peer A, Heykants JJ. Linearity of pharmacokinetics and model estimation of sufentanyl. *Anesthesiology*. 1995;83:1194–204.
- Minto CF, Schnider TW, Shafer SL. Pharmacokinetics and pharmacodynamics of remifentanyl. II Model application. *Anesthesiology*. 1997;86:24–33.
- Schnider TW, Minto CF, Shafer SL, Gambus PL, Andresen C, Goodale DB, Young EJ. The influence of age on propofol pharmacodynamics. *Anesthesiology*. 1999;90:1502–16.
- Bouillon TW, Bruhn J, Radulescu L, Andresen C, Shafer TJ, Cohane C, Shafer SL. Pharmacodynamic interaction between propofol and remifentanyl regarding hypnosis, tolerance of laryngoscopy, bispectral index, and electroencephalographic approximate entropy. *Anesthesiology*. 2004;100:1353–72.
- Bouillon TW. Hypnotic and opioid anesthetic drug interaction on the CNS, focus on response surface modelling. In: Schüttler J, Schwilden H, editors. *Modern Anesthetics. Handbook of Experimental Pharmacology*. Berlin: Springer; 2008. p. 471–87.
- Schlöglhofer T, Gilly H, Schima H. Semi-invasive measurement of cardiac output based on pulse contour: a review and analysis. *Can J Anaesth*. 2014;61:452–79.
- Fischer GW. Recent advances in application of cerebral oximetry in adult cardiovascular surgery. *Semin Cardiothorac Vasc Anesth*. 2008;12:60–9.
- Santora RJ, Moore FA. Monitoring trauma and intensive care unit resuscitation with tissue hemoglobin oxygen saturation. *Crit Care*. 2009;13: S10.
- Scheeren TWL, Schober P, Schwarte LA. Monitoring tissue oxygenation by near infrared spectroscopy (NIRS): background and current applications. *J Clin Monit Comput*. 2012;26:279–87.
- Scheeren TWL, Kuizenga MH, Maurer H, Struys M, Heringlake M. Electroencephalography and brain oxygenation monitoring in the perioperative period. *Anesth Analg*. 2019;128(2):265–77.
- Putnam B, Bricker S, Fedorka P, Zelada J, Shebrain S, Omari B, Bongard F. The correlation of near-infrared spectroscopy with changes in oxygen delivery in a controlled model of altered perfusion. *Am Surg*. 2007;73:1017–22.
- Fletcher GF, Balady GJ, Amsterdam EA, Chaitman B, Eckel R, Fleg J, Froelicher VF, Leon AS, Piña IL, Rodney R, Simons-Morton DA, Williams MA, Bazzarre T. Exercise standards for testing and training: a statement for healthcare professionals from the American Heart Association. *Circulation*. 2001;104:1694–740.
- Gobel FL, Norstrom LA, Nelson RR, Jorgensen CR, Wang Y. The rate-pressure product as an index of myocardial oxygen consumption during exercise in patients with angina pectoris. *Circulation*. 1978;57:549–56.
- Faul F, Erdfelder E, Buchner A, Lang AG. Statistical power analysis using G*power 3.1: tests for correlation and regression analyses. *Behav Res Methods*. 2009;41:1149–60.
- Servin FS, Billard V. Remifentanyl and Other Opioids. In Schüttler J, Schwilden, editors. *Modern Anesthetics. Handbook of Experimental Pharmacology*. Berlin: Springer-Verlag; 2008. p. 283–312.
- Al-Rifai Z, Pharm M, Mulvey D. Principles of total intravenous anaesthesia: basic pharmacokinetics and model descriptions. *BJA Educ*. 2016;16:92–7.
- Fattorini F, Romano R, Ciccaglioni A, Pascarella MA, Rocco A, Mariani V, Pietropaoli P. Effects of remifentanyl on human heart electrical system. A transesophageal pacing electrophysiological study. *Minerva Anestesiol*. 2003;69:673–9.

33. Critchley LA, Lee A, Ho AM. A critical review of the ability of continuous cardiac output monitors to measure trends in cardiac output. *Anesth Analg*. 2010;111:1180–92.
34. Saugel B, Wagner JY, Scheeren TW. Cardiac output monitoring: less invasiveness, less accuracy? *J Clin Monit Comput*. 2016;30:753–5.
35. Sørensen H, Secher NH, Siebenmann C, Nielsen HB, Kohl-Bareis M, Lundby C, Rasmussen P. Cutaneous vasoconstriction affects near-infrared spectroscopy determined cerebral oxygen saturation during administration of norepinephrine. *Anesthesiology*. 2012;117:263–70.
36. Sørensen H, Rasmussen P, Sato K, Persson S, Olesen ND, Nielsen HB, Olsen NV, Ogoh S, Secher NH. External carotid artery flow maintains near infrared spectroscopy-determined frontal lobe oxygenation during ephedrine administration. *Br J Anaesth*. 2014;113:452–8.
37. Lecoq JP, Brichant JF, Lamy ML, Joris JL. Norepinephrine and ephedrine do not counteract the increase in cutaneous microcirculation induced by spinal anaesthesia. *Br J Anaesth*. 2010;105:214–9.
38. Cho SY, Kim SJ, Jeong CW, Jeong CY, Chung SS, Lee J, Yoo KY. Under general anesthesia arginine vasopressin prevents hypotension but impairs cerebral oxygenation during arthroscopic shoulder surgery in the beach chair position. *Anesth Analg*. 2013;117:1436–43.

Publisher's Note

Springer Nature remains neutral with regard to jurisdictional claims in published maps and institutional affiliations.

Ready to submit your research? Choose BMC and benefit from:

- fast, convenient online submission
- thorough peer review by experienced researchers in your field
- rapid publication on acceptance
- support for research data, including large and complex data types
- gold Open Access which fosters wider collaboration and increased citations
- maximum visibility for your research: over 100M website views per year

At BMC, research is always in progress.

Learn more biomedcentral.com/submissions

