

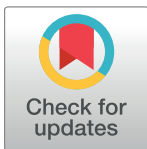
RESEARCH ARTICLE

Molecular machinery of auxin synthesis, secretion, and perception in the unicellular chlorophyte alga *Chlorella sorokiniana* UTEX 1230

Maya Khasin¹, Rebecca R. Cahoon², Kenneth W. Nickerson¹, Wayne R. Riekhof^{1*}

1 School of Biological Sciences, University of Nebraska–Lincoln, Lincoln, NE, United States of America, **2** Department of Biochemistry, University of Nebraska–Lincoln, Lincoln, NE, United States of America

* wriekhof2@unl.edu



OPEN ACCESS

Citation: Khasin M, Cahoon RR, Nickerson KW, Riekhof WR (2018) Molecular machinery of auxin synthesis, secretion, and perception in the unicellular chlorophyte alga *Chlorella sorokiniana* UTEX 1230. PLoS ONE 13(12): e0205227. <https://doi.org/10.1371/journal.pone.0205227>

Editor: Abidur Rahman, Iwate University, JAPAN

Received: August 11, 2017

Accepted: September 22, 2018

Published: December 10, 2018

Copyright: © 2018 Khasin et al. This is an open access article distributed under the terms of the [Creative Commons Attribution License](https://creativecommons.org/licenses/by/4.0/), which permits unrestricted use, distribution, and reproduction in any medium, provided the original author and source are credited.

Data Availability Statement: All sequence data and gene identifiers used in this study are available at NCBI under BioProject PRJNA343632.

Funding: This work was supported by National Science Foundation award number EPS-1004094 (to W.R.R.), a seed grant from the Nebraska Center for Energy Sciences Research (to W.R.R.) and by laboratory startup funding from the University of Nebraska - Lincoln College of Arts and Sciences and School of Biological Sciences (to W.R.R.). The funders had no role in study design, data collection

Abstract

Indole-3-acetic acid is a ubiquitous small molecule found in all domains of life. It is the predominant and most active auxin in seed plants, where it coordinates a variety of complex growth and development processes. The potential origin of auxin signaling in algae remains a matter of some controversy. In order to clarify the evolutionary context of algal auxin signaling, we undertook a genomic survey to assess whether auxin acts as a signaling molecule in the emerging model chlorophyte *Chlorella sorokiniana* UTEX 1230. *C. sorokiniana* produces the auxin indole-3-acetic acid (IAA), which was present in both the cell pellet and in the supernatant at a concentration of ~ 1 nM, and its genome encodes orthologs of genes related to auxin synthesis, transport, and signaling in higher plants. Candidate orthologs for the canonical AUX/IAA signaling pathway were not found; however, auxin-binding protein 1 (ABP1), an alternate auxin receptor, is present and highly conserved at essential auxin binding and zinc coordinating residues. Additionally, candidate orthologs for PIN proteins, responsible for intercellular, vectorial auxin transport in higher plants, were not found, but PILs (PIN-Like) proteins, a recently discovered family that mediates intracellular auxin transport, were identified. The distribution of auxin related gene in this unicellular chlorophyte demonstrates that a core suite of auxin signaling components was present early in the evolution of plants. Understanding the simplified auxin signaling pathways in chlorophytes will aid in understanding phytohormone signaling and crosstalk in seed plants, and in understanding the diversification and integration of developmental signals during the evolution of multicellular plants.

Introduction

Auxin is a phytohormone that contributes to the execution of nearly all complex growth and development processes in seed plants, including gravitropism, phototropism, and cell expansion and differentiation. Indole-3-acetic acid (IAA) is the most potent and best-studied auxin in higher plants, and in *Arabidopsis thaliana* it is predominantly synthesized from tryptophan via the two-step TAA/YUC pathway: Tryptophan Aminotransferase of Arabidopsis 1 (TAA) converts tryptophan to indole-3-pyruvic acid (IPyA), and YUC, a family of flavin-dependent

and analysis, decision to publish, or preparation of the manuscript.

Competing interests: The authors have declared that no competing interests exist.

monooxygenases, converts IPyA to indole-3-acetic acid (IAA)[1]. Tryptophan-independent auxin biosynthesis has also been reported to proceed via a cytosolic indole synthase, but the enzymology of this pathway remains largely undefined [2].

Polar auxin transport regulates intracellular auxin concentrations, and proceeds through plant tissues via PIN proteins [3], whereas intracellular auxin transport between organelles proceeds through PILs (PIN-like proteins)[4]. In its protonated state, auxin can freely diffuse into the cell, where the more neutral pH cytoplasmic results in its deprotonation; therefore, the intracellular concentration of auxin is mediated primarily by efflux proteins of the ATP binding cassette family (specifically, ABCB4) and an auxin-specific amino acid permease like protein, AUX1 [5][6].

Three protein types acting in sequence mediate auxin perception in seed plants: TRANSPORT INHIBITOR RESPONSE 1/AUXIN SIGNALING F-BOX PROTEINS (TIR1/AFB), subunits of a SCF-type E3 ubiquitin ligase and Auxin/INDOLE ACETIC ACID (Aux/IAA) transcriptional repressors. Auxin coordinates the interaction between TIR1/AFB and Aux/IAA proteins, targeting Aux/IAA proteins for 26S proteasome mediated degradation, which in turn derepresses the transcription of auxin response factors (ARFs) (reviewed by Wang and Estelle 2014). An additional auxin sensing pathway is mediated by ABP1, a cupin domain containing protein which effects rapid, nontranscriptional auxin responses including ion fluxes at the plasma membrane [7][8].

Molecular studies of plant hormone signaling in algae have revealed a surprisingly sophisticated repertoire of plant hormone signaling orthologs [9]. The detection of auxin in the cells and tissues of charophytes and chlorophytes has been widely reported, however, the specific roles and mechanisms of auxin signaling in these algae remain obscure and a matter of dispute [10][11][12]. We now describe the molecular foundation for development of a new unicellular model for phytohormone signaling in algae. We analyzed the genome sequence of *Chlorella sorokiniana* UTEX 1230 to identify putative orthologs for auxin-active genes, and analyzed their evolutionary relationships with orthologs from other sequenced algae and plants. We thus identified candidate genes that mediate the synthesis, transport, and perception of IAA by this organism. Of particular note, *C. sorokiniana* encodes an ortholog for auxin-binding protein 1 (ABP1) in which the auxin binding residues, as well as the zinc coordinating residues essential for auxin binding, as identified in corn [13], are conserved. The functionality of this suite of genes is supported by our detection of IAA within the cell pellet and its secretion into the culture medium. This indicates a functional IAA biosynthesis and efflux pathway, with molecular mechanisms analogous to those of higher plants [14]. The observation of IAA secretion also raises the possibility that this molecule serves as an extracellular signal, allowing coordination of cellular processes across a population of cells, or within the context of a biofilm. Though a homozygous null mutation in ABP1 was previously thought to be embryo lethal in Arabidopsis, subsequent studies have demonstrated that a homozygous null ABP1 mutant is not embryo lethal and that the previously described lethal phenotype was an artifact of the tDNA insertion, which disrupted the neighboring gene, an essential mitochondrial transcription factor [4]. However, despite the viability of homozygous null ABP1 mutants in Arabidopsis, ABP1 remains the only candidate auxin receptor identified by this study in the absence of canonical TIR1/AFB components. This indicates that ABP1 could function as a primitive auxin receptor prior in evolutionary time to the recruitment of more specialized proteins to the auxin signaling pathway.

Materials and methods

Genomic data availability

All sequence data and gene identifiers used in this study are available at NCBI under BioProject PRJNA343632

Phylogenetic analyses

We used an *in silico* approach in order to identify putative orthologs for auxin signaling in *Chlorella* and in other chlorophytes. Putative auxin signaling orthologs and outgroups were selected from representative chlorophytes, charophytes, and plants, including seed plants, ferns, and mosses. Reciprocal BLAST searches on the genome revealed candidate genes, which were aligned with Clustal Omega (except for ABP1, which was aligned with Expresso) [15] and verified by phylogenetic analysis using MEGA 6.06 using the LG+I substitution model [16]. Outgroups for these analyses were selected based on the similarity of primary protein sequences and similar domain structure, enzymatic functions, or transport functions.

ABP1. ABP1 was identified in the genome via reciprocal BLAST search with the *Z. mays* ortholog of ABP1 [13]. The outgroup, GLP1, was selected due to its structural similarity as a comparatively short (145 AA) protein with a cupin domain [17].

AUX1. AUX1 is an amino acid permease like transporter specific for auxin transport [18]. The outgroup, ANT1, is an aromatic amino acid transporter in plants [19]. Amino acid permeases tend to be highly conserved, and the substrates of AUX1 and ANT1 are of similar structure (small aromatic amino acids or amino acid-derived molecules).

ABCB4. ABCB4 is an ATP binding cassette transporter [7][8]. The outgroup is annotated in *Arabidopsis* as a *p*-coumaric acid transporter, and was chosen because it transports a small, aromatic molecule (as is IAA) and contains a highly conserved ATP-binding cassette domain [20].

PILS. PILS (PIN-like proteins) are recently discovered auxin transport proteins which are similar in structure and function, but phylogenetically distinct from the PIN polar auxin transporters in plants [6]. In order to identify the distinct lineages of PIN and PILS proteins, PILS proteins from representative plants and algae were aligned, with PIN proteins as the outgroup [5].

IBR5. Identified in *Arabidopsis* as a mutant with altered indole-3-butyric acid responses [21], IBR5 is a MAP kinase phosphatase which is conserved across vascular and nonvascular plants and algae. MKP2 was chosen as an outgroup because both proteins contain MAP kinase phosphatase domains that are involved in complex plant hormone signaling networks [22].

Structural modeling

CsABP1 was structurally aligned to the PDB structure of *Zea mays* ABP1 bound with naphthaleneacetic acid (NAA), PDB accession 1LRH using SWISSMODEL on default settings [23]. This alignment was further investigated in PyMol v. 3.2, which was used to investigate the conservation of the auxin binding and zinc coordinating residues in CsABP1.

IAA measurements

A *C. sorokiniana* UTEX 1230 culture was obtained from the University of Texas Culture Collection of Algae. Initial cultures were grown to saturation and 50 mL cultures were inoculated at a starting cell density of 5×10^6 cells/mL in Bold's Basal Medium [24]. After two days of growth with either constant illumination or a 16h light: 8h dark photoperiod, cells were harvested. The supernatant was taken to dryness in a rotary evaporator (Büchi Rotavapor R-215, New Castle, DE) and the residue dissolved in 1 mL methanol. Cell pellets were extracted with a solution of 80% acetonitrile/1% glacial acetic acid, which was evaporated under N₂ (N-Evap 112 Nitrogen Evaporator, Organomotion Associates Inc., Berlin, MA) and dissolved in 1 mL methanol. IAA was quantified via LC/MS/MS as described in [25]. In place of a deuterated standard, we used a standard curve of IAA ranging from 1 pM to 1 μ M.

Results and discussion

Conservation of tryptophan dependent IAA biosynthesis, transport, and signal transduction pathways in *Chlorella sorokiniana*

A detailed survey of the *C. sorokiniana* genome sequence revealed the presence of numerous orthologs to higher plant IAA biosynthetic enzymes, transporters, and signal transduction components, as indicated in Fig 1, with specific gene designations detailed in Table 1.

In contrast to higher plants, a tryptophan specific transaminase was not identified with high confidence, however three putative general amino acid transaminases were identified (Table 1). This finding of a limited number of general amino acid transaminases agrees with prior knowledge that most microbial transaminases are relatively nonspecific in their activity. It also suggests that the transaminases proliferated and became more specified in their function

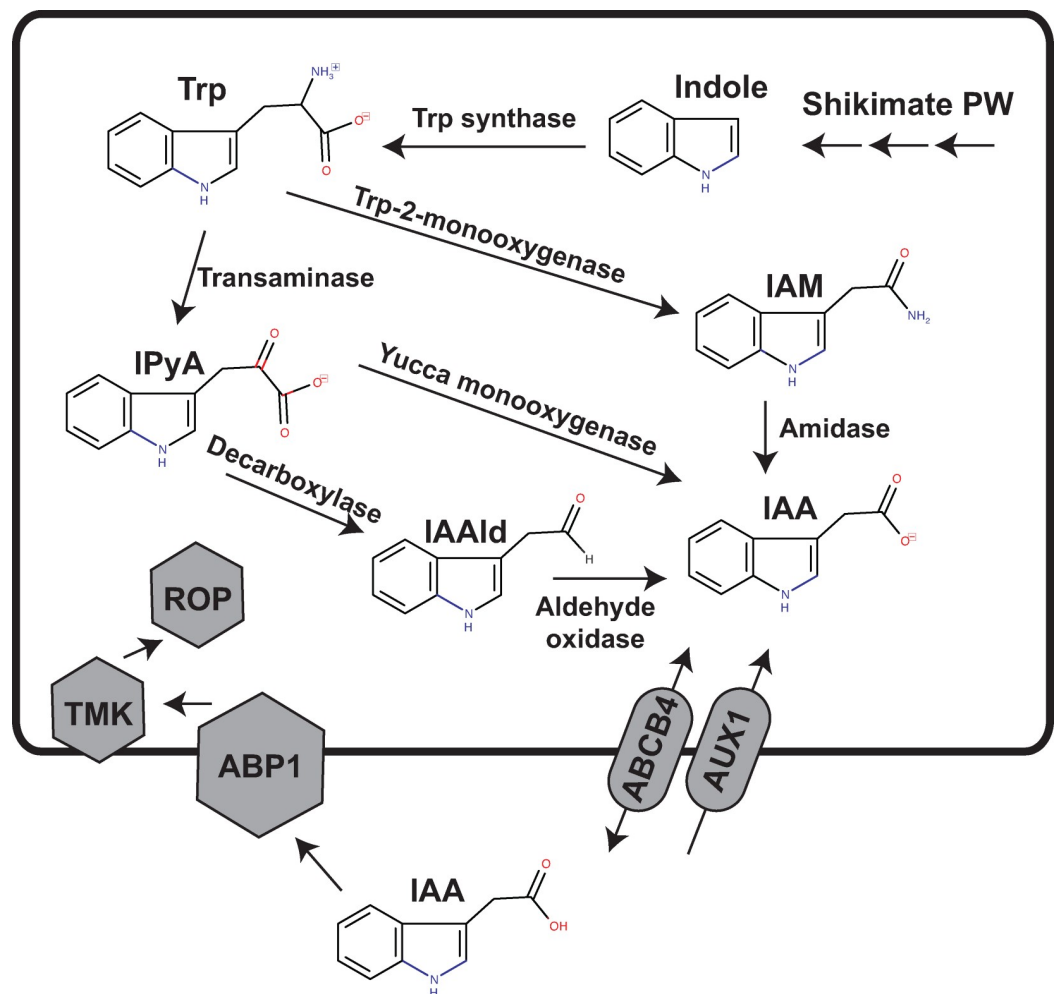


Fig 1. A model for auxin biosynthesis, transport, and signaling in *Chlorella*. Putative pathways of IAA biosynthesis in *C. sorokiniana* include (1.) the indole-3-pyruvic acid (IPyA) pathway: A tryptophan transaminase first converts Trp to IPyA and flavin monoxygenase (*Yucca*) converts IPyA to indole-3-acetic acid (IAA); (2.) The indole-3-acetamide (IAM) pathway: Primarily a pathway in phytopathogenic bacteria, IAM has been detected in all plants tested; furthermore, plants encode an amidase that converts IAM to IAA; (3.) The indole-3-acetaldehyde (IAAld) pathway. In the IAAld pathway, IPyA is converted to IAAld by a decarboxylase, and indole-3-acetaldehyde oxidase converts IAAld to IAA. Efflux and import functions are associated with the presence of specific transporters and the ABP1 receptor and associated downstream signaling components are present, as specified in Table 1.

<https://doi.org/10.1371/journal.pone.0205227.g001>

Table 1. The *Chlorella sorokiniana* genome encodes putative orthologs for the biosynthesis, transport, sensing, and signal transduction of auxin.

Functional category	Gene name	<i>Arabidopsis</i> accession	<i>Chlorella</i> accession	Percent identity	Expect	Specific function
Receptor	ABP1	AT4G02980	sca021.g104100.t1*	39	9e-35	Receptor
Amino acid transaminases	TAA1	AT1G70560	sca134.g100350.t1 [◇] sca110.g101700.t1 [◇] sca003.g105450.t7 [◇]	25	7e-04	<i>C. sorokiniana</i> general transaminases
Biosynthesis	YUC	AT2G33230 (YUC7)	sca096.g103150.t1*	27	3e-14	Indole-3-pyruvate monooxygenase
	AMI1	AT1G08980	sca003.g101900.t1*	39	3e-75	Indole-3-acetamide hydrolase
	AAO1	AT5G20960	sca130.g100900.t1	29	4e-119	Indole-3-acetaldehyde oxidase
Transport	PILS	AT1G71090 (PILS2)	sca099.g100650.t1*	32	2e-21	PIN-like intracellular auxin transporters
	ABCB4	AT2G47000	sca090.g105800.t1*	39	0.0	Auxin-specific ABC-type transporters
	AUX1	AT2G38120	sca028.g105050.t1*	34	1e-21	Aromatic amino acid permease like auxin transporter
Signal transduction	TMK1	AT1G66150	sca128.g101450.t1	26	2e-35	Activates Rho-like GTPase signaling
	ROP2	AT1G20090	sca139.g104200.t1	32	4e-22	Rho-like GTPase signaling

Arabidopsis queries were used to identify BLASTP hits in the draft *C. sorokiniana* genome. Reciprocal hits are denoted with an asterisk (*). Three newly discovered putative transaminases, not specific to tryptophan, are denoted by the diamond ([◇]). AtYUC and the putative CsYUC genes, denoted with a bullet ([•]), are not perfectly reciprocal hits, even though AtYUC queries return CsYUC and CsYUC queries against *Arabidopsis* return AtYUC among the top 10 hits.

<https://doi.org/10.1371/journal.pone.0205227.t001>

throughout higher plant evolution. Similarly, *C. sorokiniana* encodes genes for the formation of IAA by three different routes (Fig 1 and Table 1): CsAMI1 for indole-3-acetamide hydrolase [26], CsYUC for indole-3-pyruvate monooxygenase [27], and CsAAO1 for indole-3-acetaldehyde oxidase. The amino acid sequence of CsYUC is closest to *Arabidopsis* YUC5 and YUC7, which are expressed in roots [27], though no reciprocal BLAST hit was found. *Arabidopsis* TAA does not return a transaminase specific for tryptophan: the three putative orthologs listed in Table 1 are hits for the general amino acid transaminase family, as suggested by their expect values. However, most microorganisms have a limited number of amino acid transaminases able to interact with multiple amino acids. For instance, *E. coli* has four major transaminases, each of which can interact with 3–6 amino acids [28]. Similarly, *S. cerevisiae* has four multisubstrate transaminases which participate in fusel alcohol formation via the Ehrlich pathway with two of these transaminases: Aro8p and Aro9p, neither of which have specific orthologs in *C. sorokiniana*, being broad substrate specificity transaminases for the aromatic amino acids [29]. *Arabidopsis* encodes eleven YUC family flavin containing monooxygenases whose expression is tissue dependent, reiterating the theme of proliferation and recruitment of enzymes to specific pathways and locations throughout the course of plant evolution. It does not contain any PIN orthologs.

Conservation of IAA transporters

Arabidopsis contains at least four classes of auxin transporters (Fig 1 and Table 1): PIN proteins, which are efflux transporters that mediate polar auxin transport [5]; PILS (PIN-like) transporters, which control intracellular auxin gradients [6]; ATP binding cassette (ABCB) transporters whose directionality depends on the concentration of auxin [7], and AUX1/Like-AUX1 (LAX) transporters [18], which are plasma membrane-localized auxin permeases that resemble aromatic amino acid permeases. *C. sorokiniana* encodes at least one putative ortholog for three of the four families of transporters: PILS, AUX1, and ABCB type transporters (Figs 2, 3 and 4 and Table 1).

The redundancy of auxin related genes in the *Arabidopsis* genome suggests a multitude of functions that can be finely modulated and thus, it is possible that the single auxin related genes

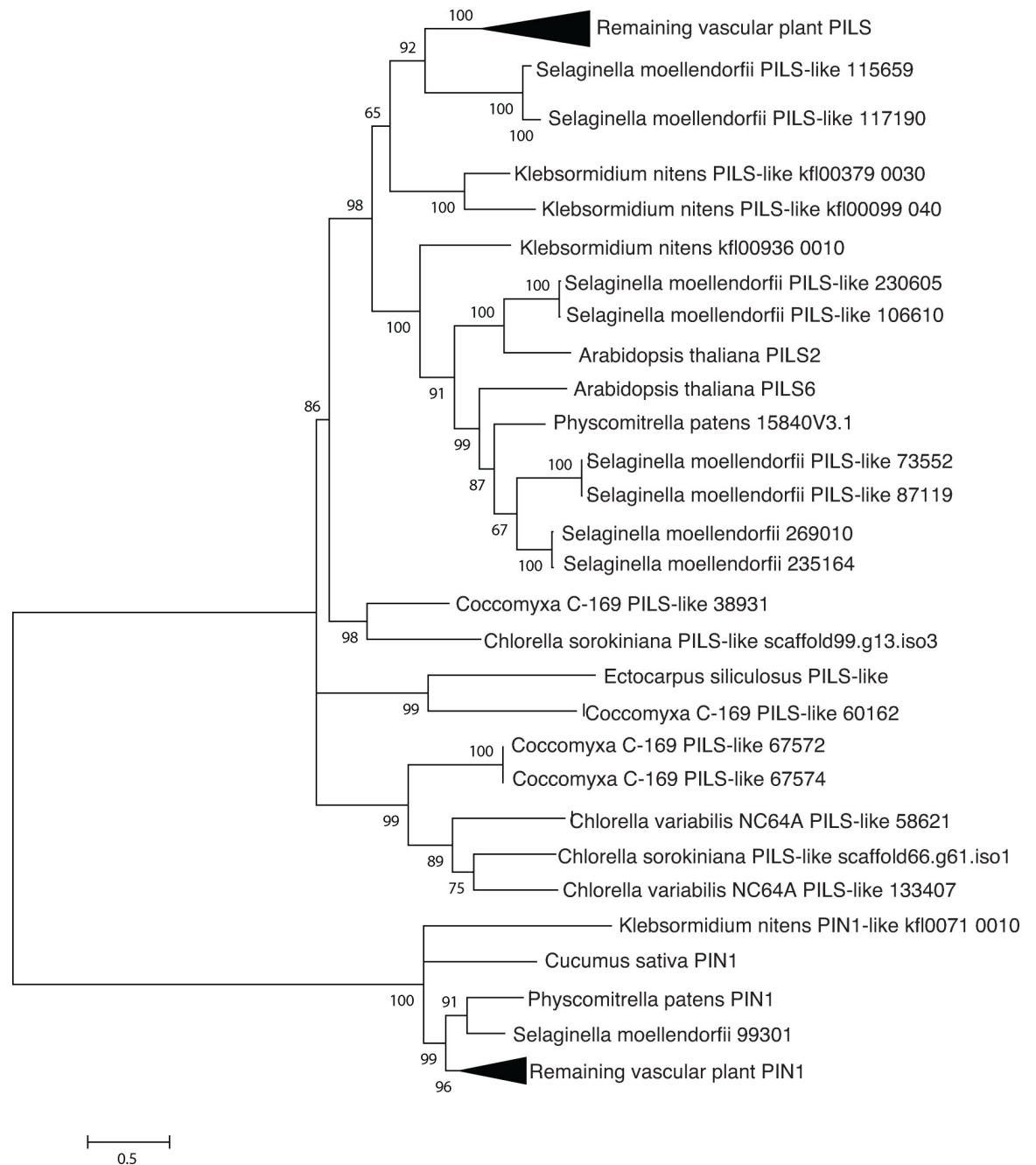


Fig 2. Phylogenetic analysis indicates sequence conservation of PILS. PILS (PIN-like) transporters, similar to but distinct from PIN proteins, mediate intracellular auxin transport. Putative orthologs and outgroups were identified by reciprocal BLAST searches, aligned with Clustal Omega and analyzed using the LG+I substitution model in MEGA 6.06.

<https://doi.org/10.1371/journal.pone.0205227.g002>

in *C. sorokiniana* control a range of physiological processes. The presence of PILS-like intracellular orthologs and the absence of PIN orthologs, which mediate extracellular polar auxin transport, are consistent with a unicellular lifestyle. Though PILS are intracellular in plants, both Multiloc2 and TargetP predict that it may localize to the secretory pathway, with Multiloc2 predicting ER or Golgi localization. These suggest a potential role for CsPIL in intercellular

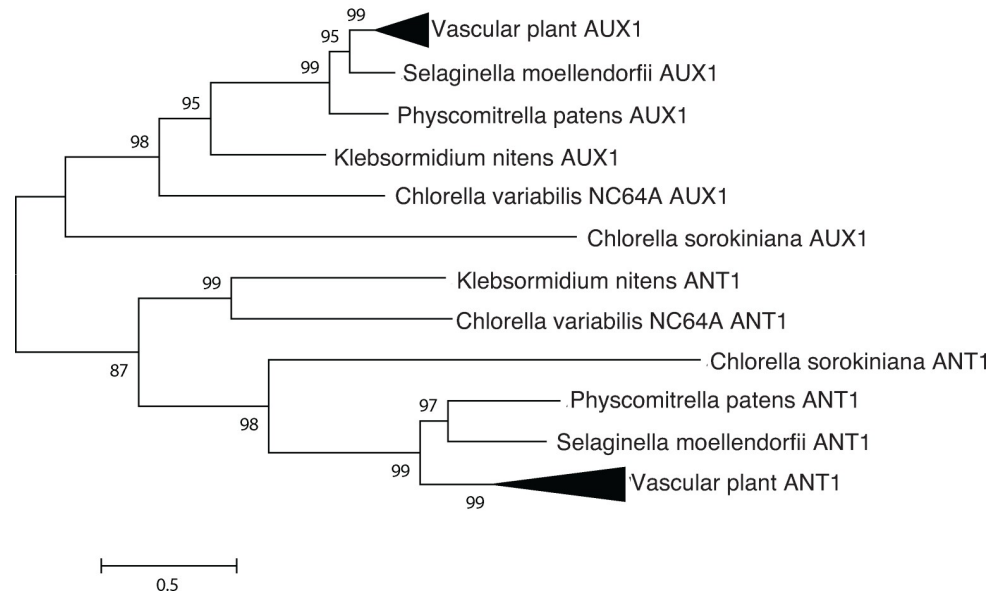


Fig 3. Phylogenetic analysis indicates sequence conservation of AUX1. AUX1, an AAP-like transporter specific for auxin transport, is compared with ANT1, an aromatic amino acid transporter in plants. Putative orthologs and outgroups were identified by reciprocal BLAST searches, aligned with Clustal Omega and analyzed using the LG+I substitution model in MEGA 6.06.

<https://doi.org/10.1371/journal.pone.0205227.g003>

signaling. The later appearance of PIN proteins in plants and in algae with differentiated organs is consistent with their participation in activities related to a multicellular lifestyle.

ABP1 mediated signal transduction

In higher plants, auxin is perceived by at least two types of receptors: the SCF/TIR1/AFB co-receptors, responsible for transcriptional responses to auxin, and ABP1, a cupin domain containing protein whose signaling primarily effects rapid, nontranscriptional auxin responses

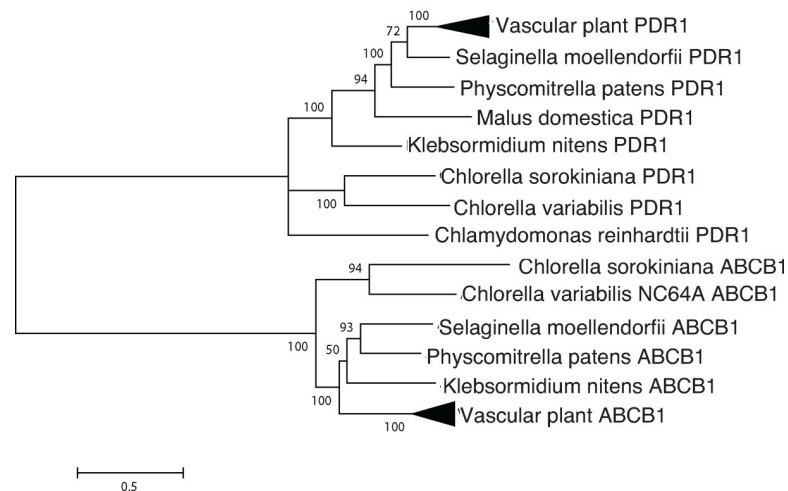


Fig 4. Phylogenetic analysis indicates sequence conservation of ABCB4. An ABCB transporter, is compared with a *p*-coumaric acid transporter which also transports a small organic molecule. Putative orthologs and outgroups were identified by reciprocal BLAST searches, aligned with Clustal Omega and analyzed using the LG+I substitution model in MEGA 6.06.

<https://doi.org/10.1371/journal.pone.0205227.g004>

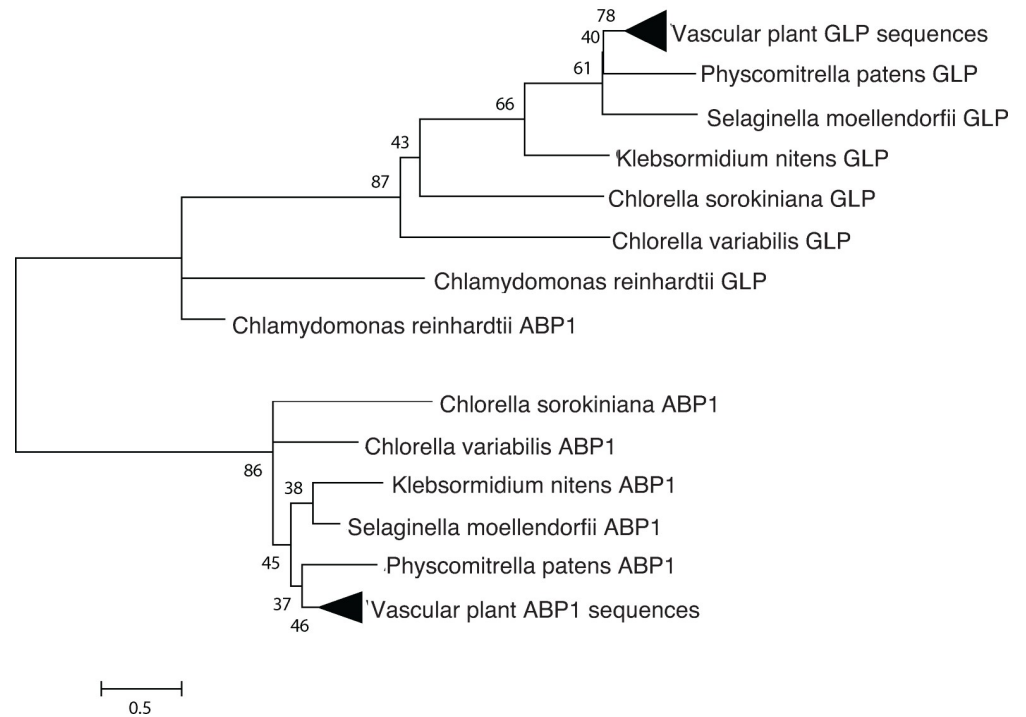


Fig 5. Phylogenetic analysis indicates sequence conservation of ABP1. ABP1, a putative IAA receptor, compared with GLP1, a similarly short (145 AA) cupin domain protein. Putative ABP1 ortholog and outgroups were identified by reciprocal BLAST searches, aligned with Expresso and analyzed using the LG+I substitution model in MEGA 6.06.

<https://doi.org/10.1371/journal.pone.0205227.g005>

such as cell expansion and ion fluxes at the plasma membrane [3]. Using *Arabidopsis* auxin sensing components as queries in BLAST searches, we determined that *C. sorokiniana* does not contain orthologs to the SCF/TIR1/AFB co-receptors nor to the auxin responsive transcription factors (ARF). However, it does contain a highly conserved ortholog to ABP1 (Table 1 and Fig 5).

ABP1 is a putative auxin receptor first discovered in cell fractions from maize coleoptiles [30]. It was characterized as an auxin receptor in the early 1990s, and the protein structure was solved in 2001. Woo et al. (2001) crystallized ABP1 with and without the synthetic auxin naphthaleneacetic acid (NAA) [13]. The structure determined that the auxin binding region features a cluster of hydrophobic amino acids that bind the aromatic ring(s) of auxin, as well as three histidines and a glutamic acid which coordinate a zinc ion which interacts with the carboxylate moiety of IAA. We identify ABP1 as the putative auxin receptor in *Chlorella* species. Structure-based sequence alignment by Expresso [15] followed by pairwise structural alignment by SWISSMODEL [23] (Fig 6) revealed 42% identity and a high degree of structural similarity between *Z. mays* ABP1 and *C. sorokiniana* ABP1.

The auxin binding pocket is almost completely conserved, except for a phenylalanine to methionine substitution and a glutamic acid to serine substitution. Additionally, the histidines and glutamic acid residues coordinating the zinc atom were completely conserved (Fig 6). This high degree of conservation in key residues suggests a functional role for the ABP1 ortholog in *Chlorella*. In *Arabidopsis*, auxin-bound ABP1 is essential for the activation of Rho-dependent GTPases (ROPs), mediated by plasma membrane associated transmembrane kinases (TMKs) [31]. *C. sorokiniana* encodes both ROP and TMK orthologs for this signaling pathway (Table 1 and Fig 1). Additionally, *C. sorokiniana* encodes an

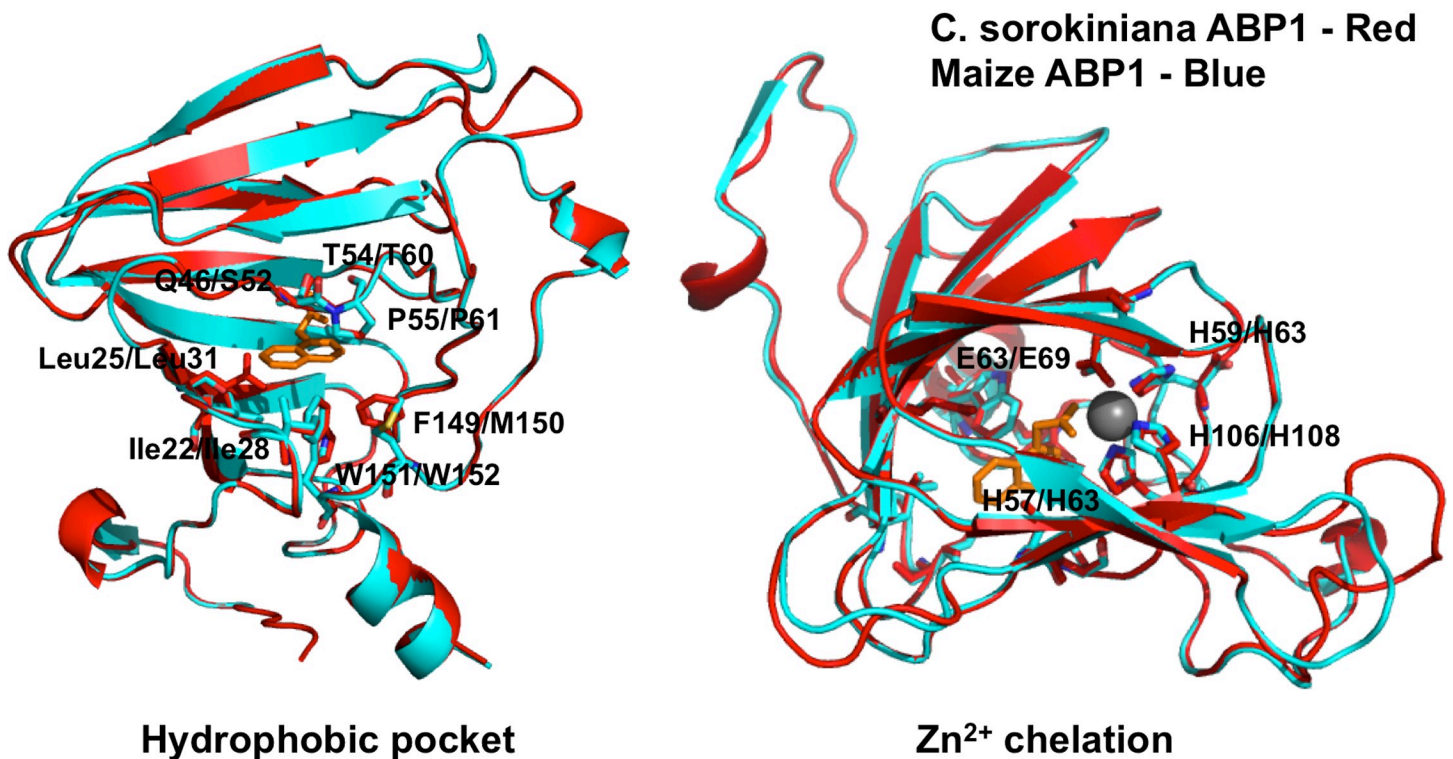


Fig 6. Multiple sequence and structural alignment reveal a high degree of structural conservation between *Z. mays* ABP1 and *C. sorokiniana* ABP1. A SWISSMODEL structural alignment on automated mode aligned CsABP1 with the ZmaABP1 crystal structure co-crystallized with the synthetic auxin naphthalenetic acid (NAA). The resulting model revealed almost complete conservation of the auxin binding pocket (A), and complete conservation of the histidines and glutamic acid residues that coordinate the zinc atom (B) that stabilizes the carboxylate moiety of IAA/NAA. The red structure represents *Zea mays*, and the blue structure represents *Chlorella sorokiniana*. *Z. mays* residues are indicated first, with *C. sorokiniana* residues following the slash.

<https://doi.org/10.1371/journal.pone.0205227.g006>

ortholog for IBR5 (Fig 7), a recently identified TIR-interacting indole butyric acid receptor, but putative functions and interactions for IBR5 in *C. sorokiniana* remain undefined [21].

The presence of ABP1 and IBR5 and the absence of AUX/IAA signaling components suggests that non-AUX/IAA mediated signaling pathways in plants may have originated in algae, and that their function broadened and diversified as plants colonized land.

Synthesis and secretion of IAA into the culture medium

Under the conditions tested, *C. sorokiniana* produces (per 50 ml culture) approximately 2 ng of IAA in the cell pellet and secretes 9 ng into the culture supernatant, resulting in a supernatant concentration of approximately 1 nM (Fig 8).

In *Arabidopsis*, the TIR1/AFB receptors perceive IAA at a K_d of 84 nM [32], and purified *Z. mays* ABP1 has a K_d of 100 nM for IAA [33]. However, *C. sorokiniana* has been reported to grow as a biofilm in biofuel and waste remediation biotechnology, and we have observed biofilm growth in glass Erlenmeyer growth flasks, in agreement with prior reports [34,35]. In a biofilm context, the concentration of IAA in the extracellular matrix between cells would be at least 2 orders of magnitude higher than that observed in our bulk planktonic cultures, placing the in situ IAA concentration well within the physiologically relevant range when compared to IAA concentrations in higher plant tissues.

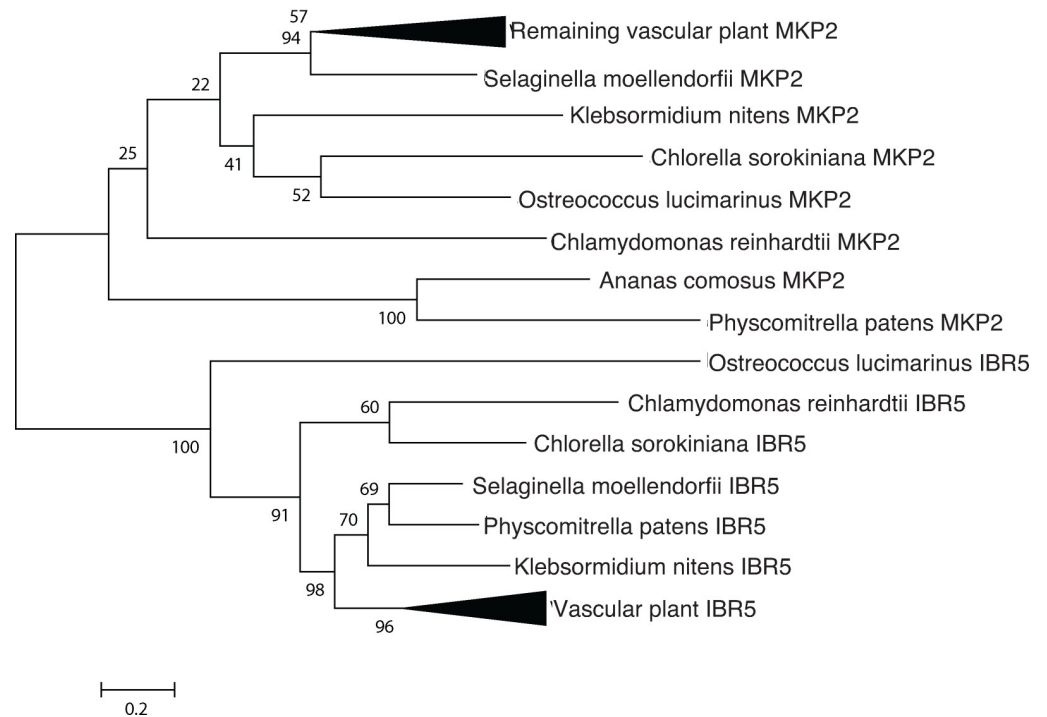


Fig 7. Phylogenetic analysis indicates sequence conservation, suggesting bona fide IAA signaling orthologs in *Chlorella*. IBR5, identified as a MAP Kinase Phosphatase with roles in auxin signaling, is compared with MKP2, which also contains a MAP kinase phosphatase domain and participates in other phytohormone signaling pathways. Putative auxin signaling orthologs and outgroups were identified by reciprocal BLAST searches, aligned with Clustal Omega (except for ABPI, aligned with Expresso) and analyzed using the LG+I substitution model in MEGA 6.06.

<https://doi.org/10.1371/journal.pone.0205227.g007>

Conclusions

The conservation of many auxin synthesis, transport, and signaling related orthologs in *Chlorella sorokiniana* and other unicellular algae demonstrates that a core set of genes required for auxin signaling were present in unicellular chlorophytes, and the production and secretion of IAA into the medium shows that the synthesis and secretion pathways are operative. However, it must be emphasized that the specific function(s) of IAA in algae are currently poorly defined, and while our work provides a foundation upon which new studies can be built, we can currently only speculate as to the functions of auxin synthesis, secretion, and signaling in unicellular chlorophytes.

A number of possible functions for auxin as an inter- or intracellular signaling molecule are conceivable. First, given our demonstration that IAA is a secreted molecule, one possibility is that IAA signaling evolved as a population-density dependent mediator of quorum sensing in algae, analogous to bacterial and fungal quorum sensing molecules. Another possibility is that IAA acts as a regulator of biofilm initiation and development, whereby the molecule is constitutively secreted and maintained at a high concentration in biofilms, and at a much lower concentration when cells are not adhered to a substrate. Still another possibility is that IAA acts as an interspecies signaling molecule, allowing algae to communicate with members of mixed biofilm communities.

From the perspective of the evolution of multicellularity and pattern formation in the green plant lineage, this work provides compelling evidence that the molecular machinery necessary for auxin signaling was present in the unicellular ancestors of higher plants, and was thus

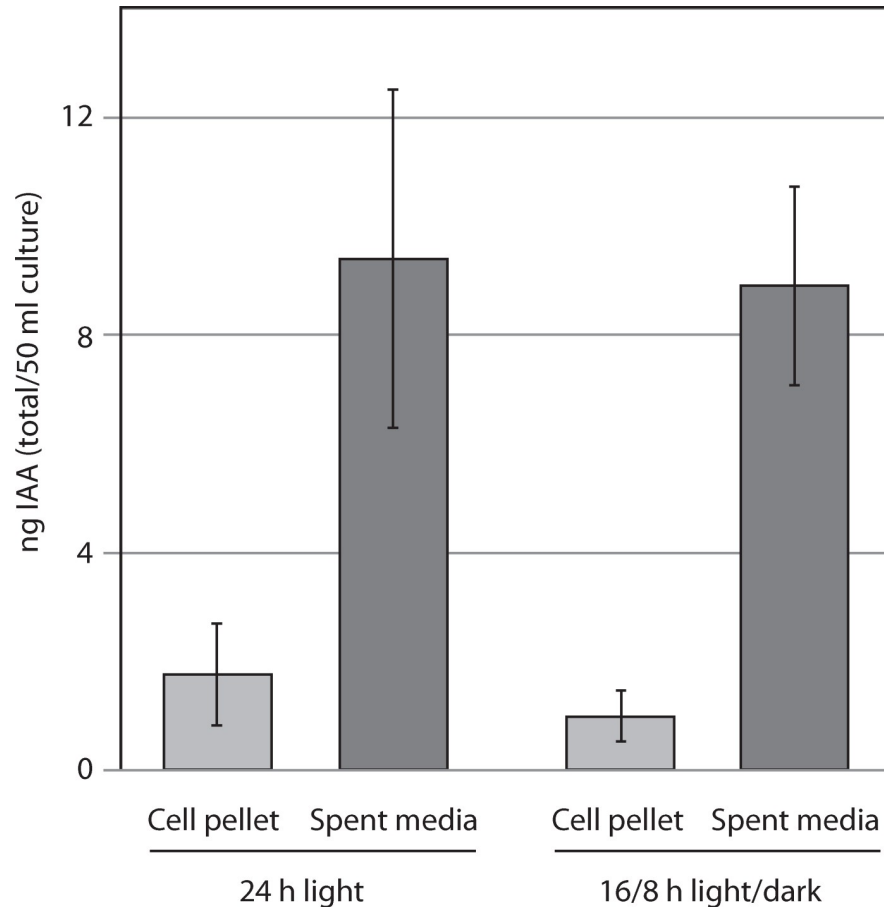


Fig 8. IAA production in *Chlorella sorokiniana*. *Chlorella sorokiniana* produces IAA within the cell pellet and secretes it into the culture medium. For each 50 ml culture, approximately 2 ng is retained within the cell pellet, while 8–9 ng is secreted into the culture medium.

<https://doi.org/10.1371/journal.pone.0205227.g008>

available for elaboration and specification of auxin signaling pathways during the evolution of land plants.

Author Contributions

Conceptualization: Maya Khasin, Kenneth W. Nickerson, Wayne R. Riekhof.

Data curation: Maya Khasin, Rebecca R. Cahoon.

Formal analysis: Maya Khasin, Rebecca R. Cahoon, Kenneth W. Nickerson, Wayne R. Riekhof.

Funding acquisition: Kenneth W. Nickerson, Wayne R. Riekhof.

Methodology: Rebecca R. Cahoon.

Project administration: Wayne R. Riekhof.

Resources: Wayne R. Riekhof.

Supervision: Kenneth W. Nickerson, Wayne R. Riekhof.

Validation: Maya Khasin, Rebecca R. Cahoon.

Visualization: Maya Khasin.

Writing – original draft: Maya Khasin, Kenneth W. Nickerson, Wayne R. Riekhof.

Writing – review & editing: Maya Khasin, Rebecca R. Cahoon, Kenneth W. Nickerson, Wayne R. Riekhof.

References

1. Kriechbaumer V, Botchway SW, Hawes C. Localization and interactions between Arabidopsis auxin biosynthetic enzymes in the TAA/YUC-dependent pathway. *J Exp Bot*. 2016; 67: 4195–4207. <https://doi.org/10.1093/jxb/erw195> PMID: 27208541
2. Wang B, Chu J, Yu T, Xu Q, Sun X, Yuan J, et al. Tryptophan-independent auxin biosynthesis contributes to early embryogenesis in Arabidopsis. *Proc Natl Acad Sci*. 2015; 112: 4821–4826. <https://doi.org/10.1073/pnas.1503998112> PMID: 25831515
3. Bilou I, Xu J, Wildwater M, Willemsen V, Paponov I, Friml J, et al. The PIN auxin efflux facilitator network controls growth and patterning in Arabidopsis roots. *Nature*. 2005; 433: 39–44. <https://doi.org/10.1038/nature03184> PMID: 15635403
4. Barbez E, Kubeš M, Rolčik J, Béziat C, Pěňčík A, Wang B, et al. A novel putative auxin carrier family regulates intracellular auxin homeostasis in plants. *Nature*. 2012; 485: 119–122. <https://doi.org/10.1038/nature11001> PMID: 22504182
5. Kubeš M, Yang H, Richter GL, Cheng Y, Młodzińska E, Wang X, et al. The Arabidopsis concentration-dependent influx/efflux transporter ABCB4 regulates cellular auxin levels in the root epidermis. *Plant J*. 2012; 69: 640–654. <https://doi.org/10.1111/j.1365-313X.2011.04818.x> PMID: 21992190
6. Yang H, Murphy AS. Functional expression and characterization of Arabidopsis ABCB, AUX1 and PIN auxin transporters in *Schizosaccharomyces pombe*. *Plant J*. 2009; 59: 179–191. <https://doi.org/10.1111/j.1365-313X.2009.03856.x> PMID: 19309458
7. Wang R, Estelle M. Diversity and specificity: Auxin perception and signaling through the TIR1/AFB pathway. *Curr Opin Plant Biol*. Elsevier Ltd; 2014; 21: 51–58. <https://doi.org/10.1016/j.pbi.2014.06.006> PMID: 25032902
8. Gao Y., Zhang Y., Zhang D., Dai X., Estelle M and Z. Auxin binding protein 1 (ABP1) is not required for either auxin signaling or Arabidopsis development. *Proc Natl Acad Sci USA*. 2015; 112: 2275–2280. <https://doi.org/10.1073/pnas.1500365112> PMID: 25646447
9. Lu Y, Xu J. Phytohormones in microalgae: A new opportunity for microalgal biotechnology? *Trends Plant Sci*. Elsevier Ltd; 2015; 20: 273–282. <https://doi.org/10.1016/j.tplants.2015.01.006> PMID: 25697753
10. Lau S, Shao N, Bock R, Jürgens G, De Smet I. Auxin signaling in algal lineages: fact or myth? *Trends Plant Sci*. 2009; 14: 182–188. <https://doi.org/10.1016/j.tplants.2009.01.004> PMID: 19285905
11. Yue J, Hu X, Huang J. Origin of plant auxin biosynthesis. *Trends Plant Sci*. Elsevier Ltd; 2014; 19: 764–770. <https://doi.org/10.1016/j.tplants.2014.07.004> PMID: 25129418
12. Turnaev II, Gunbin K V., Afonnikov DA. Plant auxin biosynthesis did not originate in charophytes. *Trends Plant Sci*. Elsevier Ltd; 2015; 20: 463–465. <https://doi.org/10.1016/j.tplants.2015.06.004> PMID: 26186977
13. Woo EJ, Marshall J, Bauly J, Chen JG, Venis M, Napier RM, et al. Crystal structure of auxin-binding protein 1 in complex with auxin. *EMBO J*. 2002; 21: 2877–2885. <https://doi.org/10.1093/emboj/cdf291> PMID: 12065401
14. Zhao Y. Auxin biosynthesis: A simple two-step pathway converts tryptophan to indole-3-Acetic acid in plants. *Mol Plant*. 2012; 5: 334–338. <https://doi.org/10.1093/mp/ssf104> PMID: 22155950
15. Armougom F, Moretti S, Poirot O, Audic S, Dumas P, Schaeli B, et al. Expresso: Automatic incorporation of structural information in multiple sequence alignments using 3D-Coffee. *Nucleic Acids Res*. 2006; 34: 604–608. <https://doi.org/10.1093/nar/gkl092> PMID: 16845081
16. Tamura K, Dudley J, Nei M, Kumar S. MEGA4: Molecular Evolutionary Genetics Analysis (MEGA) software version 4.0. *Mol Biol Evol*. 2007; 24: 1596–1599. <https://doi.org/10.1093/molbev/msm092> PMID: 17488738
17. Wang X, Zhang H, Gao Y, Sun G, Zhang W, Qiu L. A comprehensive analysis of the cupin gene family in soybean (*Glycine max*). *PLoS One*. 2014; 9. <https://doi.org/10.1371/journal.pone.0110092> PMID: 25360675

18. Yang Y, Hammes UZ, Taylor CG, Schachtman DP, Nielsen E, Chen L, et al. High-Affinity Auxin Transport by the AUX1 Influx Carrier Protein. *Plant Physiol.* 2006; 125: 1123–1127. <https://doi.org/10.1104/pp.125.4.1813>
19. Chen L, Ortiz-Lopez A, Jung A, Bush DR. ANT1, an aromatic and neutral amino acid transporter in *Arabidopsis*. *Plant Physiol.* 2001; 125: 1813–20. <https://doi.org/10.1104/pp.125.4.1813> PMID: 11299361
20. Cerutti T, Delatorre CA. Nitrogen and phosphorus interaction and cytokinin: Responses of the primary root of *Arabidopsis thaliana* and the *pdr1* mutant. *Plant Sci. Elsevier Ireland Ltd;* 2013; 198: 91–97. <https://doi.org/10.1016/j.plantsci.2012.10.007> PMID: 23199690
21. Strader LC, Monroe-Augustus M, Bartel B. The IBR5 phosphatase promotes *Arabidopsis* auxin responses through a novel mechanism distinct from TIR1-mediated repressor degradation. *BMC Plant Biol.* 2008; 8: 41. <https://doi.org/10.1186/1471-2229-8-41> PMID: 18423007
22. Jin SL, Ellis BE. *Arabidopsis* MAPK phosphatase 2 (MKP2) positively regulates oxidative stress tolerance and inactivates the MPK3 and MPK6 MAPKs. *J Biol Chem.* 2007; 282: 25020–25029. <https://doi.org/10.1074/jbc.M701888200> PMID: 17586809
23. Schwede T, Kopp J, Guex N, Peitsch MC. SWISS-MODEL: An automated protein homology-modeling server. *Nucleic Acids Res.* 2003; 31: 3381–3385. <https://doi.org/10.1093/nar/gkg520> PMID: 12824332
24. Allen MM. Simple conditions for growth of unicellular blue-green algae on plates. *J Phycol. Wiley Online Library;* 1968; 4: 1–4.
25. Pan X, Welti R, Wang X. Quantitative analysis of major plant hormones in crude plant extracts by high-performance liquid chromatography-mass spectrometry. *Nat Protoc.* 2010; 5: 986–992. <https://doi.org/10.1038/nprot.2010.37> PMID: 20448544
26. Mano Y, Nemoto K, Suzuki M, Seki H, Fujii I, Muranaka T. The AMI1 gene family: Indole-3-acetamide hydrolase functions in auxin biosynthesis in plants. *J Exp Bot.* 2010; 61: 25–32. <https://doi.org/10.1093/jxb/erp292> PMID: 19887500
27. Won C, Shen X, Mashiguchi K, Zheng Z, Dai X, Cheng Y, et al. Conversion of tryptophan to indole-3-acetic acid by tryptophan aminotransferases in *Arabidopsis* and YUCCAs in *Arabidopsis*. *Proc Natl Acad Sci.* 2011; 108: 18518–18523. <https://doi.org/10.1073/pnas.1108436108> PMID: 22025721
28. Moat AG, Foster JW, Spector MP. Fermentation pathways. *Microb Physiol Fourth Ed.* John Wiley & Sons, Inc.; 2002; 412–433.
29. Hazelwood LA, Daran J-M, van Maris AJA, Pronk JT, Dickinson JR. The Ehrlich pathway for fusel alcohol production: a century of research on *Saccharomyces cerevisiae* metabolism. *Appl Environ Microbiol. Am Soc Microbiol;* 2008; 74: 2259–2266.
30. Dohrmann U, Hertel R, Kowalik H. Properties of auxin binding sites in different subcellular fractions from maize coleoptiles. *Planta.* 1978; 140: 97–106. <https://doi.org/10.1007/BF00384907> PMID: 24414464
31. Xu T, Dai N, Chen J, Nagawa S, Cao M, Li H, et al. Cell surface ABP1-TMK auxin-sensing complex activates ROP GTPase signaling. *Science.* 2014; 343: 1025–8. <https://doi.org/10.1126/science.1245125> PMID: 24578577
32. Dharmasiri N, Dharmasiri S, Estelle M. The F-box protein TIR1 is an auxin receptor. *Nature.* 2005; 435: 441–5. <https://doi.org/10.1038/nature03543> PMID: 15917797
33. Hesse T, Feldwisch J, Balshüsemann D, Bauw G, Puype M, Vandekerckhove J, et al. Molecular cloning and structural analysis of a gene from *Zea mays* (L.) coding for a putative receptor for the plant hormone auxin. *EMBO J.* 1989; 8: 2453–61. [https://doi.org/10.1016/0168-9525\(89\)90163-7](https://doi.org/10.1016/0168-9525(89)90163-7) PMID: 2555179
34. Berner F, Heimann K, Sheehan M. Microalgal biofilms for biomass production. *J Appl Phycol.* 2015; 27: 1793–1804. <https://doi.org/10.1007/s10811-014-0489-x>
35. Blanken W, Janssen M, Cuaresma M, Libor Z, Bhajji T, Wijffels RH. Biofilm growth of *Chlorella sorokiniana* in a rotating biological contactor based photobioreactor. *Biotechnol Bioeng.* 2014; 111: 2436–2445. <https://doi.org/10.1002/bit.25301> PMID: 24895246