

# SCIENTIFIC REPORTS



OPEN

## Contact gating at GHz frequency in graphene

Q. Wilmart<sup>1</sup>, A. Inhofer<sup>1</sup>, M. Boukhicha<sup>1</sup>, W. Yang<sup>1</sup>, M. Rosticher<sup>2</sup>, P. Morfin<sup>1</sup>, N. Garroum<sup>3</sup>, G. Fève<sup>1</sup>, J.-M. Berroir<sup>1</sup> & B. Plaçais<sup>1</sup>

Received: 03 November 2015

Accepted: 12 January 2016

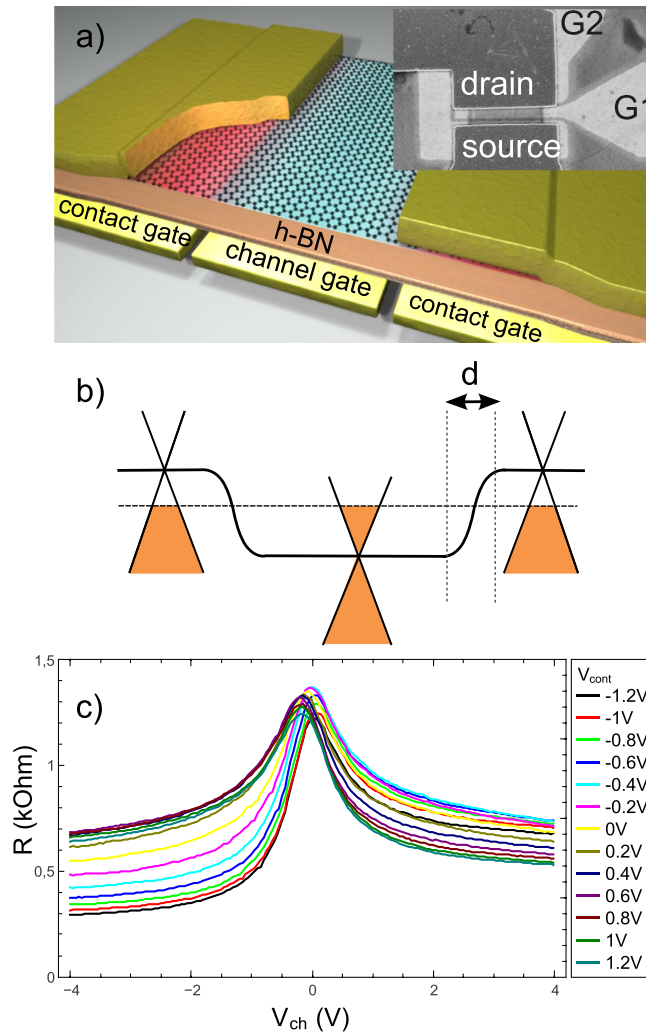
Published: 16 February 2016

The paradigm of graphene transistors is based on the gate modulation of the channel carrier density by means of a local channel gate. This standard architecture is subject to the scaling limit of the channel length and further restrictions due to access and contact resistances impeding the device performance. We propose a novel design, overcoming these issues by implementing additional local gates underneath the contact region which allow a full control of the Klein barrier taking place at the contact edge. In particular, our work demonstrates the GHz operation of transistors driven by independent contact gates. We benchmark the standard channel and novel contact gating and report for the later dynamical transconductance levels at the state of the art. Our finding may find applications in electronics and optoelectronics whenever there is need to control independently the Fermi level and the electrostatic potential of electronic sources or to get rid of cumbersome local channel gates.

In general, contacts behave as passive elements impeding the performance of electronic devices. In high mobility graphene transistors the contact resistance competes with the channel resistance already for channel lengths in the hundred nanometer range<sup>1</sup>. A standard route to minimize this spurious contribution is to match contact doping with channel doping using an overall back gate. Introduced in silicon and carbon nanotube Schottky barrier transistors<sup>2,3</sup>, back gating proves particularly efficient in graphene<sup>4–6</sup> and other 2D materials<sup>7</sup>, thanks to the weak screening at 2D. Going one step further, one can think of turning contacts to active elements by controlling independently and dynamically their electric and chemical potentials using individual contact gates; the non linear element is then the Klein tunneling barrier that develops at the contact edge due to the work function mismatch between metal and graphene<sup>8</sup>. Such a contact gating is challenging as it requires a set of local gates to engineer the doping profile all along the graphene sheet with the Fermi wave length resolution. In the present work we have realized dual gate Klein barrier transistors (KBTs) achieving these conditions using a nano-patterned bottom gate array, thin hexagonal boron nitride (hBN) dielectric, and palladium (Pd) contacts. The contact gate controls the doping of contacted graphene locally, including its polarity, which allows operating the KBT in a fully tunable bipolar regime. Its low bias DC properties are accurately mapped using a ballistic Klein tunneling junction model<sup>9</sup> from which we extract the relevant contact parameters. Its dynamical response is investigated at GHz frequency, where contact gating is benchmarked against conventional channel gating. The realization of gated contacts opens the way to new types of devices such as (channel) gate-free transistors for microwave or photo-detectors<sup>10,11</sup>, tunable nanosecond electron sources for quantum electronics<sup>12,13</sup> or spintronics<sup>14</sup>, as well as new architectures based on Dirac Fermion optics<sup>15–17</sup>.

A graphene contact is a composite element made of two junctions in series: a vertical metal-graphene junction and an in-plane contact junction. The former stems from the momentum mismatch between zone-center metallic and zone-edge graphene electrons and the latter results from doping gradients at the contact edge. According to Giovanetti *et al.*<sup>8</sup>, a charge transfer takes place at the metal-graphene junction as a result of work function imbalance  $\Delta W$  between graphene and metal; its equilibrium density is governed by  $\Delta W$  and the screening energy  $\epsilon_c$  of graphene (see Eq. (3) below). However the electrostatic problem is not fully closed in general as the doping may be further controlled by remote electrostatic influence from the back side of the contact. Therefore Eq. (3)

<sup>1</sup>Laboratoire Pierre Aigrain, Ecole Normale Supérieure-PSL Research University, CNRS, Université Pierre et Marie Curie-Sorbonne Universités, Université Paris Diderot-Sorbonne Paris Cité, 24 rue Lhomond, 75231 Paris Cedex 05, France. <sup>2</sup>Département de Physique, Ecole Normale Supérieure-PSL Research University, CNRS, Université Pierre et Marie Curie-Sorbonne Universités, Université Paris Diderot-Sorbonne Paris Cité, 24 rue Lhomond, 75231 Paris Cedex 05, France. <sup>3</sup>Laboratoire de Physique Statistique, Ecole Normale Supérieure-PSL Research University, CNRS, Université Pierre et Marie Curie-Sorbonne Universités, Université Paris Diderot-Sorbonne Paris Cité, 24 rue Lhomond, 75231 Paris Cedex 05, France. Correspondence and requests for materials should be addressed to B.P. (email: bernard.placais@lpa.ens.fr)

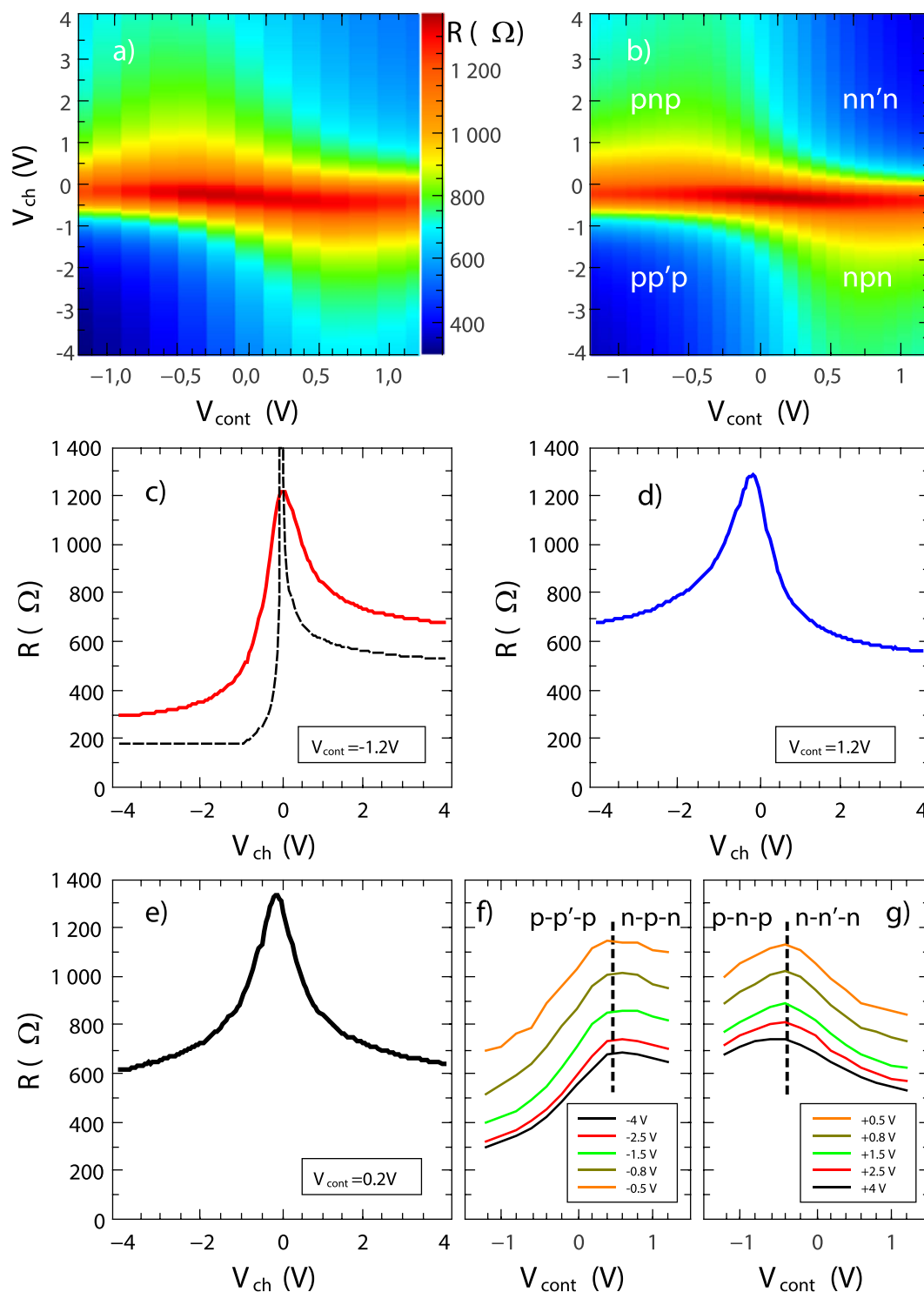


**Figure 1.** Panel (a): artist view of the contact-gated graphene transistor achieving independent channel and contact gating. Inset: SEM image of the transistor; here G1 and G2 stand for channel and contact gates respectively. The scale is given by the channel width and length of  $1.1 \mu\text{m}$  and  $0.2 \mu\text{m}$  respectively. Panel (b): sketch of the doping profile of the device. Panel (c): Dependence of the resistance transfer function by the contact-gate voltage. Characteristic features of independent contact and channel gating are prominent: *i.e.* a strong modulation in the p and n doped regimes and the absence of modulation of the Dirac peak position.

incorporates contact back gating by the voltage  $V_{cont}$ , which fully sets the Fermi energy of the graphene area located beneath the metal. In-plane junctions have been investigated theoretically (see e.g. ref. 9) and experimentally<sup>1,4,6</sup>. As a difference with gate defined channel junctions<sup>18–20</sup>, contact junctions are generally sharp and ballistic; their resistance is determined by the junction length  $d$  and the doping (polarity and concentration) on both sides. With  $k_F d / 2\pi \sim 1$ , where  $k_F$  is the electronic wave number in the least doped side, sharp p-n junctions have a high transparency  $T \gtrsim 0.5$ <sup>9</sup>. In this work we demonstrate a Klein barrier transistor, equipped with a bottom channel gate (bias  $V_{ch}$ ) and two interconnected source and drain contact gates (bias  $V_{cont}$ ) as sketched in Fig. 1a. The independent dual gate control of Klein barriers is highlighted in the low-bias resistance curve  $R(V_{ch})$ , where  $R$  is strongly modulated by  $V_{cont}$  at large channel p- and n-doping (Fig. 1b) while remaining independent of  $V_{cont}$  at channel neutrality. At finite bias, the dual-gate KBT shows a large RF transconductance ( $g_m^{RF}$  per unit width  $W$ ) upon channel ( $g_{m,ch}^{RF}$ ) and contact ( $g_{m,cont}^{RF}$ ) gating, both values approaching the state of the art for RF field effect transistors ( $g_m / V_{ds} \sim 250 \text{ S}\cdot\text{m}^{-1}\text{V}^{-1}$ ).

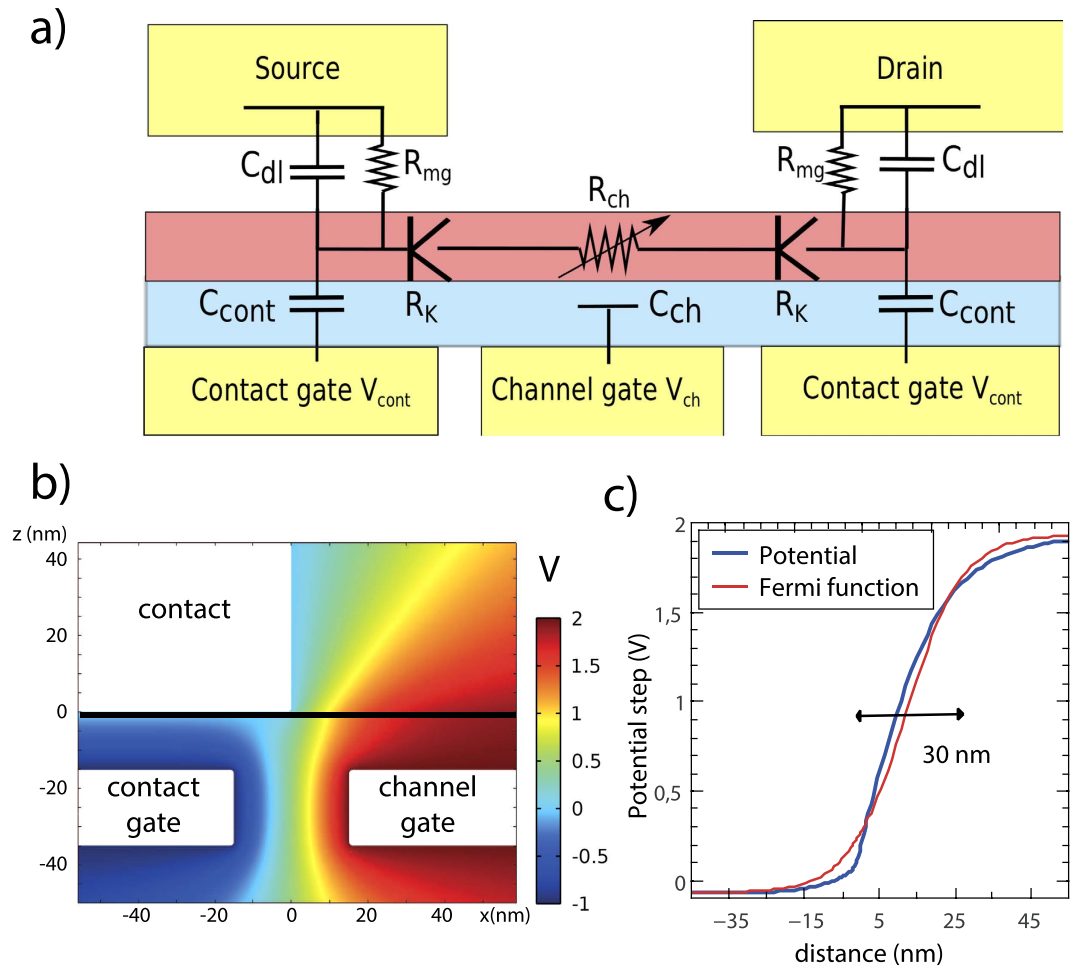
## Methods

Following ref. 21 we use h-BN flakes as a mobility preserving back-gate dielectric (dielectric constant  $\kappa \simeq 4.2$ ). A 16 nm-thin h-BN flake is deposited on a 20 nm-thick tungsten film that is nanostructured with 30 nm gaps to realize a back gate array as shown in Fig. 1a (inset). The 30 nanometer long intergate trenches are achieved by e-beam lithography and dry etching. Tungsten was used here as a refractory metal preserving the gate pattern resolution during annealing processes. In addition, the h-BN dielectrics shows superior dynamical properties, as compared with conventional thin oxides, due to the absence of spurious charge traps. The exfoliated graphene and



**Figure 2. DC operation of the contact gated transistor.** Panel (a): color map of the device resistance as a function of contact and channel gate voltages. Panel (b): Corresponding simulation using the fitting model and parameters described in the text. Panels (c–e): Typical resistance transfer curves for a subset of contact gate voltages. The asymmetry of curves in panels (c,d) reflects the p and n doping of the contact; the symmetry of curve in panel (e) suggests a neutral contact. The dotted line in panel (c) represents the transfer curve expected from a fully ballistic device. Panels (f,g): Device resistance as a function of contact gate voltage for channel gate voltages  $V_{ch} = -4\text{ V} \rightarrow -0.5\text{ V}$  and  $V_{ch} = +4\text{ V} \rightarrow +0.5\text{ V}$  (from bottom to top) respectively.

h-BN flakes are transferred with a dry technique<sup>22</sup>. Palladium contacts are deposited and aligned with the trenches to set independent channel and contact gating (inset of Fig. 1a). The channel length and width are

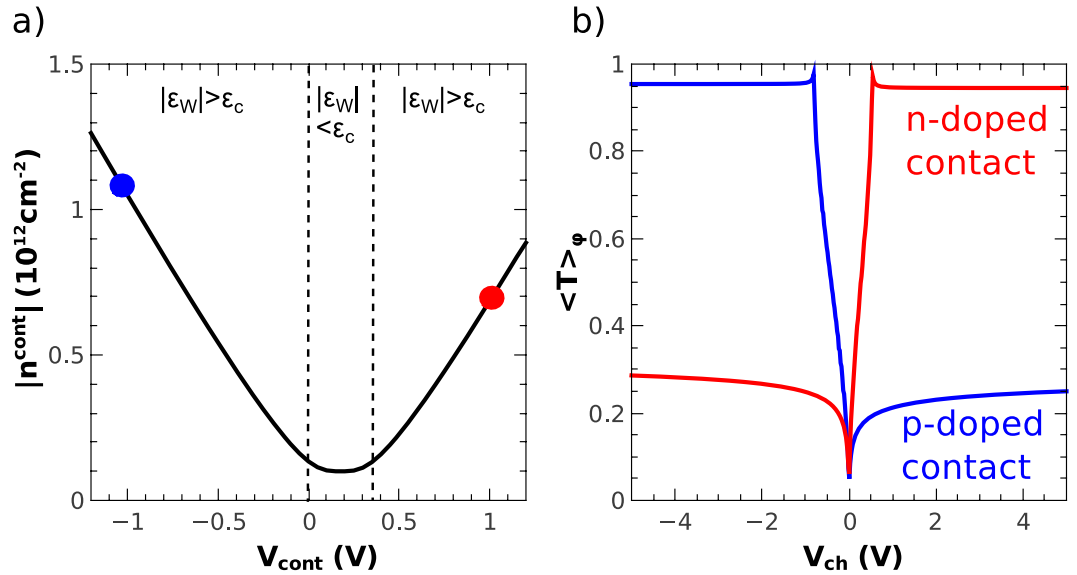


**Figure 3.** Panel (a) Equivalent circuit diagram of the sample. The contact area is represented by a resistance  $R_{mg}$  in parallel with an electrical double layer capacitance  $C_{dl}$  that stand for electrochemical balance. The doping of graphene underneath the contact is modulated through the capacitance  $C_{cont}$ . The “K” symbol represents the Klein tunneling junction between contact area and channel area with its associated resistance  $R_K(V_{ch}, V_{cont})$ .  $R_{ch} = \frac{L}{Wne\mu}$  is the diffusive resistance of the channel modulated by the channel gate through  $C_{ch}$ . Panel (b) Electrical potential map of the device at the contact junction from finite element simulation for 2 typical channel and contact gate voltages,  $V_{cont} = -1$  V and  $V_{ch} = +2$  V, the contact being at  $V_{source} = 0$  V. Dimensions are labeled in nanometers, the graphene layer being located at  $z = 0$ . Panel (c) Horizontal cut of the potential through the junction together with a Fermi like function. The 10–90% extension is  $d \simeq 30$  nm.

$L = 0.2 \mu\text{m}$  and  $W = 1.1 \mu\text{m}$ . Other samples have been fabricated using CVD graphene showing similar behaviors, with however a lower contrast due to longer and more diffusive channels ( $L = 0.5 \mu\text{m}$ ); for simplicity we restrict ourselves to the data obtained on the exfoliated sample. The nanoscale packing of three electrodes (a metallic contact and two gates) provides a vectorial control of the local electric field at the contact edge (Fig. 3b): the two normal components,  $E_{\perp} \lesssim 0.5$  V/nm limited by the h-BN dielectric strength<sup>23</sup>, controlling the doping density on both sides of the junctions, whereas the in-plane component,  $E_{\parallel} \sim \pm 0.2$  V/nm limited by the inter-gate spacing, controls the junction steepness. In our working conditions we have  $k_F^{cont} d / 2\pi \lesssim 1$ . The transistor is embedded in a three port coplanar wave guide (CPW) (Fig. 5a) used for DC and RF characterization; the transfer curves and scattering parameters are measured identically for contact and/or channel gating. Experiments are carried out in a 40 GHz variable temperature probe station, with a measuring window limited to 3 GHz by the finite resistivity ( $\sim 300 \Omega$  square) of the thin tungsten metallizations. The experimental data below refer to room temperature measurements, but we have checked that device properties are preserved, and eventually enriched by Fabry-Pérot oscillations, at cryogenic temperatures<sup>1,24,25</sup>.

### DC Results

Figure 1c shows the resistance transfer curve  $R(V_{ch})$  for contact gate voltages  $V_{cont} = -1.2 \rightarrow 1.2$  V. As seen in the figure, contact gating efficiently modulates the device resistance away from charge neutrality point (CNP),  $R(V_{ch})$  being modulated by a factor 2.3 for  $V_{ch} < 0$  and 1.3 for  $V_{ch} > 0$ . By contrast, the CNP conductance remains unchanged indicating a mobility limited conductance ( $\mu \simeq 6000 \text{ cm}^2 \text{ V}^{-1} \text{ s}^{-1}$  as explained below). Note that, in contrast with previous investigations using a combination of back and top gates<sup>6</sup>, the CNP-peak position is not



**Figure 4.** Panel (a) Carrier density  $n^{cont}$  of the contacted graphene as a function of the voltage applied on the contact gate  $V_{cont}$ . The dotted lines delimitate the screened ( $\epsilon_W > \epsilon_c$ ) regime and the unscreened ( $\epsilon_W < \epsilon_c$ ) regime where the contact gate is poorly efficient. The  $n^{cont}$  minimum is reached at  $V_{cont} = 0.2$  V accordingly to the effective work function mismatch. Panel (b) Averaged transmission of the contact junction  $\langle T \rangle_\theta(V_{ch})$  with diffusive lead for two characteristic doping of the contacted graphene indicated by the dots of panel a) ( $n = -1.1$  and  $n = 0.7 \times 10^{12} \text{ cm}^{-2}$ ).

shifted by the contact gate. The independence of the channel and contact gating not only facilitates the control of contact junctions at DC but also paves the way for new RF operation. For a quantitative analysis of the combined effects of channel and contact gating we consider below the full set of resistance transfer curves.

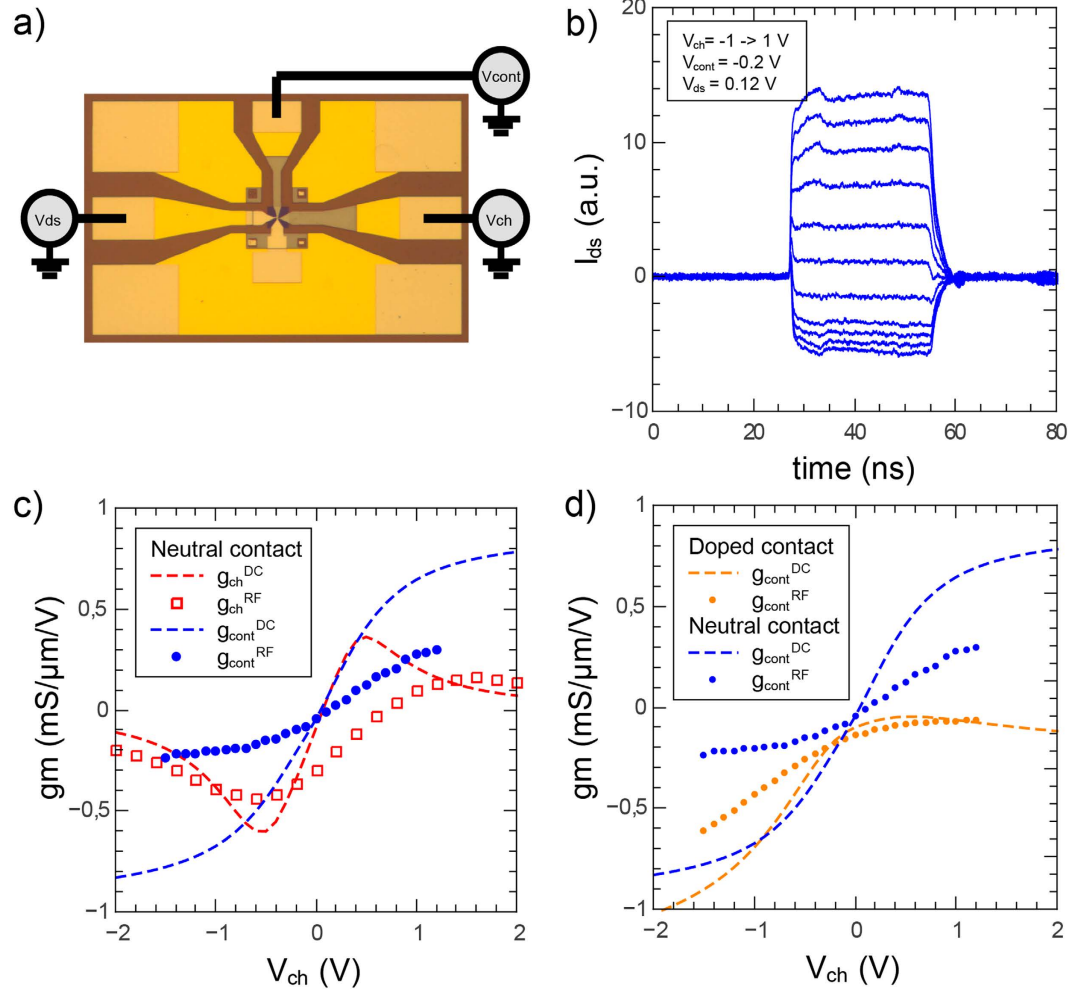
A color plot representation of the  $R(V_{ch}, V_{cont})$  is presented in Fig. 2a. As seen in the figure, the experimental data map the four polarities of channel and contact doping. Figure 2c–e show vertical cuts  $R(V_{ch})$  for three representative values of the contact gate voltage: at negative  $V_{cont} = -1.2$  V (panel-c) the curve is most asymmetric, indicating a strengthening of the pristine p-doping of Pd contacts. The asymmetry is opposite, although less pronounced, for  $V_{cont} = +1.2$  V (panel-d) suggesting the reversal from p- to n-doping of the contacts. At  $V_{cont} = 0.2$  V (panel-e) the curve is symmetric and corresponds to neutral contacts. The resistance minimum,  $R(-4 \text{ V}, -1.2 \text{ V}) = 300 \Omega$ , is achieved for p-type contacts and channel doping; it deviates from the ballistic case (dotted line in Fig. 2c and calculations below) by a small amount,  $\approx 110 \Omega$ , attributed to the metal-graphene resistance ( $R_{mg} \approx 55$  Ohms per contact). Our overall contact resistance compares favorably with the best achievements of  $100 \Omega \cdot \mu\text{m}^{4,26}$ . The asymmetry between p-doped and n-doped regimes,  $\Delta R(V_{ch} = \pm 4 \text{ V}, V_{cont} = -1.2 \text{ V}) \approx 400$  Ohms, is itself consistent with the ballistic junction model below. Figure 2f,g are  $R(V_{cont})$  cuts for p- and n- channel doping for contact junction dominated regimes. The curves show a maximum and an asymmetry which are typical of ordinary transfer curves, confirming our ability to drive the contact doping through neutrality. These curves are more direct evidence of contact doping reversal than the conventional ones obtained with remote back gates where polarity reversal is signaled by a smeared second peak<sup>6,26</sup>. The positions of the maxima are independent of  $R(V_{ch})$  (given a channel polarity) confirming the small electrostatic coupling between contact and channel gates, the  $R(V_{cont})$  curves being mainly shifted upward on decreasing channel doping due the finite carrier mobility contribution of the channel. The main features of the  $R(V_{ch}, V_{cont})$  data are well reproduced in the plot of Fig. 2b, obtained using the simple model detailed below.

### Model

To describe the contact properties we use an electrostatic model for the contact doping from ref. 8 and a Fermi-function potential model for the contact junction resistance from ref. 9. In the electrostatic model the metal-graphene contact is described by a tunnel resistance  $R_{mg}$  in parallel with a metal-graphene capacitance  $C_{dl}$  (per unit area), the later accounting for the charge double layer formed at the metal-graphene interface as a result of work function mismatch  $\Delta W$ . Whereas a metallic contact sets the electrochemical potential of the contacted graphene, both the electrostatic  $V_{gr}$  and the chemical  $E_F^{cont}$  potentials can vary. Writing the electrochemical equality (1) and the electrostatic relationship (2),

$$\Delta W = - E_F^{cont} + eV_{gr} \tag{1}$$

$$-e \frac{E_F^{cont} |E_F^{cont}|}{\pi \hbar^2 v_F^2} = C_{cont}(V_{gr} - V_{cont}) + C_{dl}V_{gr}, \tag{2}$$



**Figure 5. High frequency operation of the contact gated transistor.** Panel (a): Optical image of the 3-port coplanar wave guide (CPW) used in the experiment. CPW dimensions are  $600 \times 400 \mu\text{m}$ ; the transistor (inset of Fig. 1a) is embedded in the central part of the CPW (not visible in the figure). Panel (b): drain current temporal trace under contact-gate pulses of amplitude  $\lesssim 90\text{mV}$  for  $V_{ds} = 120\text{mV}$ ,  $V_{ch} = -1 \rightarrow 1\text{V}$ ,  $V_{cont} = -0.2\text{V}$ . Panel (c): benchmarking of channel and contact gating as measured by the DC and RF transconductances (per unit width and DC drain-source bias voltage). The comparison is carried out in neutral contact conditions  $V_{cont} = 0\text{V}$ . Panel (d): effect of contact doping at  $V_{cont} = -0.9\text{V}$  (orange dots) on the contact gate transconductance by comparison to the neutral case  $V_{cont} = 0$  (blue dots).

one obtains the expression for the chemical potential of contacted graphene (3). In addition we plot in Fig. 4a the corresponding carrier density  $|n_{cont}| = (E_F^{cont})^2 / (\pi\hbar^2 v_F^2)$  which takes into account the quantum capacitance effects<sup>27</sup> and the screening by the contacting metal<sup>8</sup>.

$$\begin{aligned}
 E_F^{cont} &= \text{sgn}(\epsilon_W) \times \epsilon_c \left( 1 - \sqrt{1 + 2 \frac{|\epsilon_W|}{\epsilon_c}} \right) \\
 \epsilon_W &= \Delta W + eV_{cont} \frac{C_{cont}}{C_{cont} + C_{dl}} \\
 \epsilon_c &= \frac{\pi\hbar^2 v_F^2}{2e^2} (C_{dl} + C_{cont}).
 \end{aligned} \tag{3}$$

The doping polarity is determined by the sign of the effective electrochemical potential mismatch  $\epsilon_W$ , which is tuned by the local bottom gate voltage  $V_{cont}$  according to the capacitance level arm ratio  $C_{cont}/C_{dl}$ . Ab-initio calculations<sup>8</sup> predict small double layer thickness ( $\sim 0.3\text{--}0.5\text{nm}$ ) and accordingly large  $C_{dl} \sim 15\text{--}30\text{fF}/\mu\text{m}^2$ . However the metal graphene coupling is process dependent and experiments show large scatter in the contact resistance presumably due to doping variations. In addition, our measurements show that, for a given sample, the contact coupling eventually depends also on thermal cycling. The term  $\epsilon_c$  defines the screening energy scale of the gated contact assembly; at low doping ( $\epsilon_W \ll \epsilon_c$ ), the screening by graphene is weak and the contact gate controls the

electrostatic potential of graphene while the gate charge is taken over by the contact itself. At large doping ( $\epsilon_w \gg \epsilon_c$ ) the charge is carried by the graphene itself that screens the contacting metal. Eq. (3) accounts for the crossover between the two regimes and is plotted in Fig. 4a. In the channel, the doping is determined by  $V_{ch}$  according to the usual parallel plate capacitor model.

The resistance is calculated using the lumped electrical elements description in Fig. 3a, where the contact junction is represented by a “K” symbol (by reference to Klein tunneling junctions). Several models have been proposed to calculate the transmission  $T(\theta)$  of a potential step as function of the incident angle  $\theta$  of carriers to the junction normal<sup>9,28,29</sup>. We assume ballistic junctions and rely on the Fermi-function model of ref. 9 where the potential step is described the function  $V(x) \propto (1 + e^{-x/w})^{-1}$  (this step shape is sketched in Fig. 1b) where  $w$  is the step length scale. As a benefit it provides analytic expressions for  $T(\theta)$  for arbitrary junction length<sup>9</sup>. The transmission is given by

$$T(\theta) = 1 - \frac{\sinh(\pi w k^{+-}) \sinh(\pi w k^{-+})}{\sinh(\pi w k^{++}) \sinh(\pi w k^{--})},$$

where  $k^{\alpha\beta} = k_F^{cont} (1 + \alpha \cos \theta) + k_F^{ch} (1 + \beta \cos \phi)$  with  $k_F^{cont, ch} = \sqrt{\pi n^{cont, ch}}$  using the Snell-Descartes relation:  $k_F^{cont} \sin \phi = -k_F^{ch} \sin \theta$ . Using numerical simulation tools (Fig. 3b), we have checked that the potential step at a contact edge in Fig. 3c does mimic a Fermi function step with a 10–90% extension  $4w \simeq d \simeq 30$  nm. In this simulation we have neglected graphene screening, an assumption that is valid at low carrier density, and strictly relevant at p-n contact junctions. The resistance  $R_K$  in Fig. 3a is then calculated using  $R_K^{-1}(V_{cont}, V_{ch}) = \frac{4e^2}{h} \frac{W k_F^{cont}}{\pi} \langle T \rangle_\theta$ , where  $\langle T \rangle_\theta(V_{cont}, V_{ch})$  is the angular average of the junction transmission appropriate for diffusive leads (also plotted in Fig. 4b in two representative cases) and  $k_F^{cont}$  the Fermi momentum of contacted graphene<sup>9</sup>. Restricting ourself to linear conductance and assuming drain-source symmetry and incoherent transport in the channel, the drain and source junction resistances simply add up. Finally we add a channel resistance  $R_{ch}$  in Fig. 3a, which is calculated taking an energy independent mobility  $\mu = Const$ . Based on this simple model we can reproduce in Fig. 2b the main features of the experimental plot  $R(V_{ch}, V_{cont})$  in Fig. 2a. In the simulation we have imposed  $C_{ch} = C_{cont} = 2.3$  fF/ $\mu\text{m}^2$  and the junction length  $d = 30$  nm from device geometry. The fitting parameters are  $R_{mg} = 55$  Ohm,  $\mu = 6000$  cm<sup>2</sup>V<sup>-1</sup>s<sup>-1</sup>,  $C_{dl} = 4.5$  fF/ $\mu\text{m}^2$  ( $\epsilon_c = 58$  meV) and  $\Delta W = 50$  meV. From these numbers we deduce the investigated contact doping range  $E_F^{cont} = -135 \rightarrow 117$  meV. Note that the value of the mobility is consistent with a ballistic length  $l_B = \mu E_F / e v_F \sim 60$  nm (at  $E_F \sim 0.1$  eV) that is larger than the junction length. In addition we have accounted for a gaussian broadening of the density corresponding to an experimental minimum sheet carrier concentration of  $n_0 \simeq 2.5 \times 10^{11}$  cm<sup>-2</sup>. The above fitting process involves a priori five adjustable parameters,  $\Delta W$ ,  $C_{dl}$ ,  $R_{mg}$ ,  $\mu$  and  $n_0$ . The last two ones are determined as usual by the  $R(V_{ch})$  dependence at DP while the three others control  $R(V_{ch})$  away from DP. They can be determined thanks to the additional  $V_{cont}$  dependence controlling the asymmetry of the  $R(V_{ch})$  curves from which we deduce the contact parameters  $\Delta W$ ,  $C_{dl}$ . As mentioned above, we finally deduce  $R_{mg}$  from the (constant) symmetric part of the  $R(V_{ch})$  curves. We found a work function mismatch between Pd and graphene of  $\Delta W = 50$  meV while the tabulated value is on the order of 1.1 eV<sup>8</sup>. However, according to Giovannetti *et al.* we should take into account a metal-graphene chemical interaction, that depends on the metal-graphene distance and scales down the work function mismatch. For a typical distance of 0.3 nm the correction is large,  $\sim 0.9$  eV<sup>8</sup>, so that one expects  $\Delta W_{th} \sim 200$  meV some factor above the measured value. This discrepancy can be attributed to a process induced chemical doping. A superiority of our dual gate transistor is that it provides a direct estimate of this effective work function mismatch as well as the screening energy.

## RF Results

Based on the understanding of the DC properties of our dual gate KBT, we proceed by investigating its dynamical properties. Especially, we show here that the performance of the transistor, driven from its contact gate, can be as good as when it is driven from the usual channel gate. Here we are restricted to the 0.1–3 GHz frequency range, due to the combined effects of the gate resistance ( $\simeq 1.5$  k $\Omega$ ) and stray capacitance ( $\simeq 50$  fF). In this window the transconductance data  $g_m$  in Fig. 5b,c are frequency independent. We have selected representative gate biasing conditions for both channel- and contact-gating excitations. The sample is biased with a drain-source voltage  $V_{ds} < 0.3$  V to achieve a finite  $g_m$  while preserving linear conditions  $g_m \propto V_{ds}$ . At higher biases, velocity saturation effects arise which are beyond the scope of the present work. In Fig. 5c we compare the RF transconductance for a channel gate excitation  $g_{ch}^{RF}$  (red squares) with that of a contact gate excitation  $g_{cont}^{RF}$  (blue dots). This benchmarking is performed in the case of neutral contacts ( $V_{cont} = 0$  V) where the device is most symmetric. We first note that channel and contact gating are equally efficient with a transconductance level  $g_m / V_{ds} / W \simeq 0.25$  mS/ $\mu\text{m}/\text{V}$  that matches the current state of the art<sup>21,30,31</sup>. For a more quantitative account of the dynamics of contact gating we have also plotted in Fig. 5c the DC transconductances  $g_{ch}^{DC}$  and  $g_{cont}^{DC}$  (dashed lines). The drop from DC to RF (Fig. 4c,d) is more pronounced for contact gating, presumably due to a larger gate source capacitance. In Fig. 5d we analyze the influence of contact doping on the contact-gate transconductance; we observe that  $g_{cont}^{RF}$  is strongly enhanced when contacted graphene is driven deep in the hole doping range ( $V_{cont} = -0.9$  V) reaching a value as large as 0.6 mS/ $\mu\text{m}/\text{V}$ . These transconductance levels are very promising for applications in RF transistors that would however require low-resistance contact gates.

Finally, we show in Fig. 4b the response of the dual gate KBT under pulsed contact gating. As seen in the figure the sign of output current is reversed upon changing the channel doping polarity (at fixed contact doping) in agreement with the transconductance measurements for similar bias conditions (panel c). A technical but

important feature is the fact that the output current pulse is a faithful replica of the contact gate pulse. We have realized similar devices where hBN is replaced by a thin aluminium oxide layer, where the situation is very different with the drain current drooping at the nanosecond scale after a gate voltage step. We attribute this effect to the relaxation of spurious charges at the graphene-oxide interface. Our hBN devices are devoid of trapped charges and therefore highly suitable for pulsed electronic applications.

## Conclusions

In conclusion we have demonstrated contact gating both at DC and RF, in a dual gate Klein barrier transistor using graphene on boron nitride with a set of local bottom gates. Our device operates in the fully bipolar regime with transport properties that are accurately mapped with a ballistic Klein tunneling junction model. Active contact gating is demonstrated at RF frequency, and compares favorably with conventional channel gating. This finding opens new routes for graphene electronics and optoelectronics by using low resistance bottom gates and/or separate contact gates to tune independently the drain and source doping.

## References

1. Wu, Y. *et al.* Quantum Behavior of Graphene Transistors near the Scaling Limit. *Nano Lett.* **12**, 1417 (2012).
2. Sze, S. M. & Kwok, K. N. *Physics of Semiconductors devices*. Wiley ed. Third edition, P. 181 (2007).
3. Heinze, S. *et al.* Carbon Nanotubes as Schottky Barrier Transistors. *Phys. Rev. Lett.* **89**, 106801 (2002).
4. Xia, F., Perebeinos, V., Lin, Y. M., Wu, Y. & Avouris, P. The origins and limits of metallic-graphene junction resistance. *Nature Nanotechnology* **6**, 179 (2011).
5. Berdebes, D., Low, T., Xia, F. & Appenzeller, J. Substrate Gating of Contact Resistance in Graphene Transistors. *IEEE Trans. Electron Devices* **58**, 3925 (2011).
6. Knoch, J., Chen, Z. & Appenzeller, J. Properties of Metallic-Graphene Contacts. *IEEE Trans. on Nanotechnology* **11**, 513 (2012).
7. Liu, W., Sarkar, D., Kang, J., Cao, W. & Banerjee, K. Impact of Contact on the Operation and Performance of Back-Gated Monolayer MoS<sub>2</sub> Field-Effect-Transistors. *ACS Nano* **9**, 7904 (2015).
8. Giovannetti, G. *et al.* Doping graphene with metal contacts. *Phys. Rev. Lett.* **101**, 026803 (2008).
9. Cayssol, J., Huard, B. & Goldhaber-Gordon, D. Contact resistance and shot noise in graphene transistors. *Phys. Rev. B* **79**, 075428 (2009).
10. Xia, F., Mueller, T., Lin, Y. M., Valdes-Garcia, A. & Avouris, P. Ultrafast graphene photodetector *Nature Nanotech.* **4**, 839 (2009).
11. Yu, Y. J. *et al.* Tuning the Graphene Work Function by Electric Field Effect. *Nano Lett.* **9**, 3430 (2009).
12. Bocquillon, E. *et al.* Coherence and Indistinguishability of Single Electrons Emitted by Independent Sources. *Science* **339**, 6123 (2013).
13. Dubois, J. *et al.* Minimal-excitation states for electron quantum optics using levitons *Nature* **502**, 7473 (2013).
14. Seneor, P. *et al.* Spintronics with graphene. *MRS Bulletin* **37**, 1245 (2012).
15. Katnelson, M. I., Novoselov, K. S. & Geim, A. K. Chiral tunnelling and the Klein paradox in graphene. *Nat. Phys.* **2**, 620 (2006).
16. Lee, G. H., Park, G. H. & Lee, H. J. Observation of negative refraction of Dirac fermions in graphene. *Nat. Phys.* **11**, 925–929 (2015).
17. Wilmart, Q. *et al.* Klein-tunneling transistor with ballistic graphene. *2D Materials* **1**, 011006 (2014).
18. Huard, B. *et al.* Transport measurements across a tunable potential barrier in graphene. *Phys. Rev. Lett.* **98**, 236803 (2007).
19. Stander, N., Huard, B. & Goldhaber-Gordon, D. Evidence for Klein Tunneling in Graphene p-n Junctions *Phys. Rev. Lett.* **102**, 026807 (2009).
20. Rickhaus, P. *et al.* Ballistic interferences in suspended graphene *Nature Communications* **4**, 2342 (2013).
21. Meric, I. *et al.* High-frequency performance of graphene field effect transistors with saturating IV-characteristics. *IEEE International Electron Devices Meeting*, 978-1-4577-0505-2 (2011).
22. Castellanos-Gomez, A. *et al.* Deterministic transfer of two-dimensional materials by all-dry viscoelastic stamping *2D Materials* **1**, 011002 (2014).
23. Hattori, Y., Taniguchi, T., Watanabe, K. & Nagashio, K. Layer-by-Layer Dielectric Breakdown of Hexagonal Boron Nitride. *ACS Nano* **9**, 916 (2015).
24. Gorbachev, R. V., Mayorov, A. S., Savchenko, A. S., Horsell, D. W. & Guinea, F. Conductance of p-n-p Graphene Structures with Air-Bridge Top Gates *Nano Lett.* **8**, 1995 (2008).
25. Young, A. F. & Kim, P. Quantum interference and Klein tunnelling in graphene heterojunctions. *Nat. Phys.* **5**, 222 (2009).
26. Zhong, H. *et al.* Realization of low contact resistance close to theoretical limit in graphene transistors. *Nano Research* **8**, 1669 (2015).
27. Pallecchi, E. *et al.* Transport scattering time probed through rf admittance of a graphene capacitor. *Phys. Rev. B* **83**, 125408 (2011).
28. Cheianov, V. V. & Falko, V. Selective transmission of Dirac electrons and ballistic magnetoresistance of n-p junctions in graphene. *Phys. Rev. B* **74**, 041403(R) (2006).
29. Sonin, E. B. Charge transport and shot noise in a ballistic graphene sheet. *Phys. Rev. B* **77**, 233408 (2008).
30. Lin, Y. M. *et al.* 100-GHz Transistors from Wafer-Scale Epitaxial Graphene. *Science* **327**, 662 (2010).
31. Pallecchi, E. *et al.* Graphene microwave transistors on sapphire substrates. *Appl. Phys. Lett.* **99**, 113502 (2011).

## Acknowledgements

The research leading to these results have received partial funding from the European union Seventh Framework programme under grant N:604391 Graphene Flagship, and from the ANR-14-CE08-018-05 “GoBN”. The work of Q.W. was supported by a DGA-MRIS scholarship. We thank thank L. Becerra for providing the tungsten films, P.J. Hakonen and G.S. Paraoanu for fruitful discussions.

## Author Contributions

J.-M.B., G.F. and B.P. conceived the experiment and developed the models. Q.W., M.R. and P.M. participated to sample fabrication. A.I., M.B. and W.Y. participated to the data analysis. N.G. has provided the numerical simulation. Q.W. and M.R. participated to the measurements. Q.W. and B.P. wrote the manuscript with contributions from the coauthors.

## Additional Information

**Competing financial interests:** The authors declare no competing financial interests.

**How to cite this article:** Wilmart, Q. *et al.* Contact gating at GHz frequency in graphene. *Sci. Rep.* **6**, 21085; doi: 10.1038/srep21085 (2016).





This work is licensed under a Creative Commons Attribution 4.0 International License. The images or other third party material in this article are included in the article's Creative Commons license, unless indicated otherwise in the credit line; if the material is not included under the Creative Commons license, users will need to obtain permission from the license holder to reproduce the material. To view a copy of this license, visit <http://creativecommons.org/licenses/by/4.0/>