



HHS Public Access

Author manuscript

BMC Nutr. Author manuscript; available in PMC 2016 August 15.

Published in final edited form as:

BMC Nutr. 2015 ; 1: . doi:10.1186/s40795-015-0012-z.

Dietary diallyl disulfide supplementation attenuates ethanol-mediated pulmonary vitamin D speciate depletion in C57Bl/6 mice

Michael L. McCaskill^{1,*}, Henry T. Hottor¹, Muna Sapkota², and Todd A. Wyatt^{4,3,2}

¹Global Environmental Health Science, School of Public Health and Tropical Medicine, Tulane University, 1440 Canal St. Ste 2100, New Orleans, LA 70112, USA

²Department of Environmental, Agricultural, and Occupational Health, College of Public Health, University of Nebraska Medical Center, Omaha, NE 68198-5990, USA

³Department of Medicine, Pulmonary, Critical Care, Sleep and Allergy Division, University of Nebraska Medical Center, Omaha, NE 68198-5990, USA

⁴Veterans Administration Nebraska Western Iowa Healthcare system, Omaha, NE 68105, USA.

Abstract

Background—Slightly more than 5 % of the United States population heavily consumes ethanol, i.e., more than 14 drinks for men and 7 drinks for women a week. Chronic ethanol consumption can result in increased liver disease, reduced recovery from burn injury, and more frequent and severe respiratory infections. Chronic ethanol over-consumption also leads to vitamin D dysmetabolism and depletion. Vitamin D is a fat-soluble pro-hormone that regulates musculoskeletal health, cellular proliferation/differentiation, and innate and adaptive immune response.

Methods—In this study, C57BL/6 mice were fed 20 % ethanol in their water *ad libitum* for 7 weeks. Some mice were fed either a standard chow or a modified diet containing 0.15 µg/day of diallyl disulfide (DADS). Whole blood, lung tissue, and bronchial alveolar lavage fluid (BALF) were collected at sacrifice and analyzed for 25(OH) D₃, 1,25 (OH)₂D₃, vitamin D receptor VDR, CYP2E1, and CYP27B1 levels.

Open Access This article is distributed under the terms of the Creative Commons Attribution 4.0 International License (<http://creativecommons.org/licenses/by/4.0/>), which permits unrestricted use, distribution, and reproduction in any medium, provided you give appropriate credit to the original author(s) and the source, provide a link to the Creative Commons license, and indicate if changes were made. The Creative Commons Public Domain Dedication waiver (<http://creativecommons.org/publicdomain/zero/1.0/>) applies to the data made available in this article, unless otherwise stated.

*Correspondence: mmccaski@tulane.edu.

Competing interests

The authors declare that they have no competing interests.

Authors' contributions

MM designed the research concept and protocol development, participated in all research activities, and composed, edited, and reviewed the manuscripts. HH and MS executed ELISA's in vitro and in vivo treatment and propagation, supported protocol design, and reviewed drafts of the manuscript. TW contributed to in vivo protocol design and data acquisition by providing assistance to protein analysis interpretation and provided intellectual assistance for manuscript critiques and review. All authors read and approved the final manuscript.

Results—Ethanol reduced 25(OH) D₃ and 1,25 (OH)₂D₃ in lung tissue and BALF on average 31 %. The largest ethanol-mediated reduction was in the 1,25 (OH)₂D₃ (42 %) measured in the BALF. Dietary supplementation of DADS restored BALF and lung tissue protein of 25(OH) D₃ and 1,25(OH)₂D₃ to control levels. Chronic ethanol consumption also resulted in tissue increases of vitamin D response (VDR) protein, Cyp2E1, and reductions in vitamin D-activating enzyme CYP27B1. All three of these effects were attenuated by dietary supplementation of DADS.

Conclusions—In conclusion, the pulmonary metabolic disturbances mediated by chronic ethanol consumption as measured by 1,25(OH)₂D₃ protein levels, epithelial lining fluid, and lung tissue can be ameliorated by dietary supplementation of DADS in C57BL/6 mice.

Background

In the United States of America, approximately 52 % of the population consume at least 12 drinks a year [1]. Slightly more than 5 % of the United States population heavily consumes ethanol, i.e., more than 14 drinks for men and 7 drinks for women a week [1]. This level of chronic consumption results in well-documented liver maladies [2, 3], as well as less obvious health-related ramifications, such as reduced success in treatment of severe burn cases [4] and more frequent incidence of severe respiratory infections [5–7].

Chronic ethanol over-consumption has been shown to interfere with the activity of several essential vitamins and nutrients, e.g., vitamin D, C, E, and folic acid. However, disruptions in vitamin D activity, via the vitamin D response element (VDRE), may have the widest range of deleterious effects [8, 9]. Chronic ethanol consumption can also have an effect on lung function. A study of ethanol consumption in young adults detailed that people who consumed more than 28 drinks per week had significantly more upper respiratory tract infections (URTIs) [10]. Chronic ethanol over-consumption has been associated with increased risk of community-acquired pneumonia [11] and increased risk of developing more severe acute respiratory distress syndrome (RR 1.59) in surgery and in hospital patient populations [12]. The lungs are particularly vulnerable to ethanol over-consumption due to the propensity of ethanol cross from the blood via the alveolar capillary bed into the alveolar spaces. Some of this unmetabolized ethanol is exhaled, however, a portion of it condenses and coats the pulmonary epithelium [13]. As an inducible metabolic pathway for ethanol metabolism, CYP2E1 creates increased amounts of oxidative stress [14] and acetaldehyde, which inhibits retinoic X receptor (RXR). The RXR is a co-activator with vitamin D response (VDR) to induce VDRE (23,46,47). We believe that extended exposure of the pulmonary epithelium to ethanol can affect VDR levels.

Vitamin D is a fat-soluble vitamin naturally present in a few foods, e.g., fatty fish, liver oils, added to others, e.g., dairy products, and available as a dietary supplement. Vitamin D is produced endogenously when ultraviolet B energy interacts with human dermal layers, which initiates in situ vitamin D₃ synthesis from seven dehydrocholesterol [15, 16]. Because most humans can synthesize adequate levels of vitamin D from sun exposure, vitamin D is often considered to be a pro-hormone as opposed to a true vitamin [17]. In the circulatory system, vitamin D₃ binds to the vitamin D-binding protein, travels to the liver, and undergoes the first of two necessary metabolic conversions. The first of two hydroxylation

steps converts the vitamin D₃ into 25-hydroxyvitamin D (25(OH)D₃) by several phase one metabolizing enzymes such as 25 hydroxylase and CYP2R1. This version of vitamin D is still biologically inactive and is further metabolized into the active form 1,25-dihydroxyvitamin D (1,25(OH)₂D₃) by CYP27B1 [18]. The second of these conversions was historically thought to only occur in the kidney, but it is now widely accepted that monocytes, macrophages, and bronchial epithelial cells also can initiate CYP27B1-mediated conversions of vitamin D in their respective cellular roles [19–21]. Active vitamin D (1,25(OH)₂D₃) can cross membranes and act within the cell by binding to VDRs in the nucleus of effector cells and epithelia. VDRs are ligand-activated transcription factors that interact with VDRE on vitamin D-regulated genes [22, 23]. Most tissues have VDRs, including airway epithelium [22]. 1,25(OH)₂D₃ binding to the VDR also stimulates the activity of 1,25(OH)₂D₃-degrading enzyme CYP24A1 and downregulates 1,25(OH)₂D₃-activating enzyme, CYP27B1 [9]. This is an important feedback mechanism allowing 1,25(OH)₂D₃ to self-regulate circulating and tissue vitamin D levels [15]. 1,25(OH)₂D₃ also regulates extra-calcemic effects, such as controlling genes to regulate cellular proliferation and apoptosis; both of which are associated with a host of metabolic growth disorders including cancer and adaptive/innate immune response [24]. Vitamin D metabolic disturbances leading to low systemic and tissue levels of 25(OH)D₃ have been associated with low levels of lung tissue antimicrobial cathelicidin/LL37, upper respiratory tract infections, and even septicemia [23, 25].

Diallyl disulfide (DADS), a lipophilic organosulfur compound found in garlic (*Allium sativum*), has been found to have chemopreventive properties in in vivo and in vitro studies [26–28]. Animal models have shown that consumption of diallyl (di and tri) sulfide can induce expression of nuclear excision DNA repair enzymes and reduce deleterious effects caused by the redox cycling of estrogen mimic diethylstilbestrol [29–31]. The chemopreventive properties of organosulfur compounds such as DADS have been partially attributed to their ability to modulate CYP2E1-mediated bioactivation of carcinogenic chemicals [32]. CYP2E1 preferentially catalyzes the oxidation of the sulfur atom to form the sulfoxide and the sulfone (DASO and DASO₂). This final metabolism of DASO₂ leads to the autocatalytic destruction of CYP2E1, which is primarily responsible for the chemoprotective effects of organosulfur compounds such as DADS in vivo [33].

Although DADS and other sulfur-containing compounds found in garlic and onions have shown to have efficacy in inhibiting DNA damage and attenuating chemically induced tumors in in vitro and in vivo laboratory models [34–36], human epidemiological studies have not been as conclusive [37, 38]. It is not entirely understood how chronic ethanol over-consumption can lead to severe pulmonary-related morbidity [39] and mortality [12]. However, published works by Drs. Jaqueline Kent [9] and Kartik Shankar [40] detail an ethanol-mediated reduction in renal levels of vitamin D-converting enzyme CYP27B1 and increases in renal levels of vitamin D-deactivating enzyme CYP24A1. Although the pulmonary parenchyma is functionally divergent from renal tissue, based on these studies and others, we believe that the deleterious health endpoints associated with the alcoholic lung involve ethanol's propensity to disturb vitamin D presence in the lungs via these converting enzymes. Thus, we hypothesized that the recovery of the presence of vitamin D in an alcoholic lung environment would be beneficial. To this date, there have been no large-

scale epidemiological studies evaluating chronic ethanol exposure and pulmonary vitamin D levels. We aimed to address this gap in knowledge by designing this study to investigate chronic ethanol consumption and the resulting induction of CYP2E1 effect on pulmonary vitamin D species. With the aims of this study, we also intended to investigate whether this modulation could be attenuated with dietary consumption of a naturally occurring organosulfur compound, diallyl disulfide.

Methods

In vivo model

There are three in vivo experiments presented in this manuscript. Study A utilized C57BL/6 mice (female; $N=7$) and were purchased from the National Cancer Institute (Frederick, MD, USA) at 7–8 weeks of age and housed under standard conditions. Mice were acclimated at the University of Nebraska Medical Center AAALAC-certified facility for 1 week prior to treatment exposure. C57BL/6 mice were fed 20 % ethanol (Sigma-Aldrich, St. Louis, MO, USA) in their water via the Cook method [41] for 7 weeks including a week of increasing ethanol concentrations in their water. Mice were monitored daily and weighed weekly with no significant changes in weight observed between the two groups. For the last 6 weeks of the protocol, the ethanol-fed mice were divided into two groups fed either a (1) standard PicoLab 5058 chow or a (2) modified PicoLab 5058 diet containing 0.05 $\mu\text{g}/1\text{ g}$ DADS ($\sim 0.15\text{ }\mu\text{g}/\text{mouse}/\text{day}$). Data from this study is presented in Figs. 1 and 5.

Study B utilized the same methodology as study A ($N=7$) with the addition of three treatment groups: (3) 0.083 $\mu\text{g}/\text{g}$ cholecalciferol (0.25 $\mu\text{g}/\text{mouse}/\text{day}$), (4) 0.05 $\mu\text{g}/1\text{ g}$ DADS ($\sim 0.15\text{ }\mu\text{g}/\text{mouse}/\text{day}$) and cholecalciferol, (5) cholecalciferol and 20 % ethanol. DADS- and cholecalciferol-supplemented rodent chows were formulated from the same standard chow by Land O' Lakes Purina Feed (All Points Cooperative, Sumner, NE, USA). Standard rodent chow or DADS-supplemented feed was available *ad libitum*, according to the treatment group. Data from this study generated Figs. 2 and 4.

Study C utilized the same methodology as study A ($N=7$) with a total of four treatment groups: (1) control, (2) ethanol (20 %), (3) DADS 0.05 $\mu\text{g}/1\text{ g}$ DADS ($\sim 0.15\text{ }\mu\text{g}/\text{mouse}/\text{day}$), and (4) ethanol (20 %) and 0.05 $\mu\text{g}/1\text{ g}$ DADS ($\sim 0.15\text{ }\mu\text{g}/\text{mouse}/\text{day}$). DADS-supplemented rodent chow was formulated from the same standard chow by Land O' Lakes Purina Feed (All Points Cooperative, Sumner, NE, USA). Standard rodent chow or DADS-supplemented feed was available *ad libitum*, according to the treatment group. Food and water consumption was documented daily. All experimental protocols were approved by the IACUC of the University of Nebraska Medical Center.

Mouse tracheal epithelial cell—Mouse tracheal epithelial cells were harvested from treated mice according to the methods published in [42], but briefly, tracheas were dissected and immediately placed in chilled F-12 Nutrient Ham Mixture (Invitrogen Corp.). Tracheas were then placed in pronase (1.5 mg/mL; Roche Diagnostic, Mannheim, Germany) and F-12 Nutrient mixture solution and allowed to dissociate overnight at 4 °C. The dissociated were spun in a centrifuge at 5000g and reconstituted in PBS and stored at 4 °C to be analyzed within 24 h.

Gene expression PCR array—A PCR array (Stratagene) custom gene kit was utilized to quantify the expression of CYP2E1, CYP24A1, VDR, and CYP27B1 in study group A. RT2 Real-Time SYBR Green PCR Master Mix was used for the RT2 Profiler™ PCR Array. 1225 µl of 2× SuperArray PCR master mix, 98 µl of the diluted first strand cDNA synthesis reaction product, and 1127 µl of deionized H₂O were mixed. In the gene-specific 96-well plate, 25 µl of this mixture was placed in wells along with tenfold serial dilutions of this mixture. A “no reverse template control” of 1 µl of a 1:100 dilution of the total RNA and PCR master mix were also added to the 96-well plate. The thermocycler was programmed to increase temperatures to 95 °C for 10 min followed by a reduction of temperature to 60 °C for 1 min for 40 cycles. After 40 cycles, the threshold of fluorescence and the cycle at which a sample crossed the threshold was established and utilized to determine a relative genetic modulation as compared to the control treatment group.

Ethanol exposure—Mice in the ethanol group were given 5 % ethanol (wt/vol) to drink *ad libitum* and scaled up over 1 week (Meadows-Cook model) to 20 % ethanol (wt/vol) for 7 weeks [41, 43, 44]. Mice in the matched control group were given water from the same source without ethanol. Although this ethanol exposure model has been reported to result in an average blood ethanol concentration (BAC) level of 149 ± 47 mg/dL in the ethanol-fed mice [45], chronic ethanol consumption in this study resulted in BAC of 121 ± 42 mg/dL (data not shown).

A percentage of orally consumed ethanol diffuses from the bronchial circulation into the lumen of the airways, where some of the ethanol is then expelled during expiration. The remainder of the ethanol in the lumen condenses onto the mucosal/epithelial layer of the large airways. This can lead to localized high levels of ethanol exposure [13]. Due to this localized exposure to ethanol, we assayed lung tissue and bronchial alveolar lavage fluid to determine the effect of chronic ethanol exposure on inactive and active vitamin D availability in the lungs of ethanol-fed mice.

25(OH)D₃ quantification

Lung tissue—To determine the level of 25(OH)D₃ protein in the lung tissue of chronic ethanol-fed and dietary-supplemented DADS-exposed mice, lung tissue was collected at the time of sacrifice. Tissue was snap frozen in liquid nitrogen and stored at –80 °C. At the time of analysis, the tissue was thawed and ~1 g per treatment group was homogenized in lysis buffer as described in [46]. Homogenized samples (25 µl) were then used to complete the enzyme-linked immunosorbent assay (ELISA) via the immunodiagnosics systems 25(OH)D₃ (IDS Inc, Scottsdale, AZ, USA).

Blood sera—Blood from C57Bl/6 mice was collected twice: prior to ethanol exposure and at the end of the 7-week ethanol treatment. Whole blood was collected, and serum was isolated using BD Vacutainer tubes (BD Biomedical, Franklin Lakes, NJ, USA). The sera from the mice were stored at –80 °C and analyzed for 25(OH)D₃ by the University of Nebraska Medical Center clinical analytical laboratory.

1,25(OH)₂D₃ quantification

Lung tissue—To determine the level of 1,25(OH)₂D₃ present in the lung tissue of chronic ethanol-fed and dietary-supplemented DADS-exposed mice, lung tissue was collected at the time of sacrifice. The tissue was flash frozen in liquid nitrogen at the time of harvest and stored at –80 °C. At the time of analysis, the tissue was thawed, and ~1 g per treatment group was homogenized in lysis buffer as previously described [46]. A sample of 250 µl of homogenized tissue per animal was assayed for 1,25(OH)₂D₃ by ELISA (IDS Scottsdale, AZ, USA).

Bronchial alveolar lavage fluid

Bronchoalveolar lavage fluid (BALF) was collected as previously described [47]. Just after completion of the ethanol exposure period, mice were euthanized by intra-peritoneal injection of pentobarbital (Nembutal; Abbott Labs, Chicago, IL, USA). Each trachea was then exposed and a cannula inserted just below the larynx. Sterile phosphate buffered saline (PBS; Gibco, Grand Island, NY, USA) was instilled (1.0 ml) into the lungs and recovered by aspiration. The 1.0 ml PBS instillation procedure was repeated three times for a total of ~3.0 ml kept separately according to the round of instillation. The first pool of the 1.0 ml of PBS was separated from the second pool and combined to recover a volume of 1.8 ml. The BALF was centrifuged at 250 *g* to collect cells. The supernatant from the first fraction of BALF fluid recovered was used to test for 1,25(OH)₂D₃.

Phase 1 metabolizing enzyme assay

CYP27B1/CYP2E1—To determine the level of phase 1 proteins CYP27B1 and CYP2E1 in the lung tissue of chronic ethanol-fed and dietary-supplemented DADS-exposed mice, lung tissue was collected at the time of sacrifice. The tissue was flash frozen in liquid nitrogen at the time of harvest and stored at –80 °C. At the time of analysis, the tissue was thawed and ~1 g per treatment group was homogenized in lysis buffer as described [46]. CYP27B1 and CYP2E1 protein ELISA kits (USCN Life Sciences, Hubei, PRC) were used to quantify lung tissue levels of these enzymes of interest.

Statistical analysis

Using GraphPad Prism v5.0, statistical significance of $p < 0.05$ in the experimental murine groups ($N = 7-8$) was determined by using Student's *t* test or one-way ANOVA for multiple group statistical comparisons.

Results

Blood serum levels of 25(OH) vitamin D₃ in ethanol- and DADS-fed mice

The serum levels of 25(OH)D₃ in ethanol-fed C57BL/6 mice, when normalized to total protein, were statistically unchanged. However, a statistically significant 31 % reduction in 25(OH)D₃ was observed in the lung tissue of ethanol-fed mice as compared to the non-ethanol-fed controls (Fig. 1).

Lung tissue and BALF levels of 1,25(OH)₂ vitamin D₃ in 8-week ethanol and DADS-fed mice

When compared to the control group, 8-week ethanol-fed mice displayed statistically significant reductions of 51 and 42 % in lung tissue and BALF 1,25(OH)₂D₃ levels, respectively. Daily dietary supplementation of DADS (~18 µg/day) restored 1,25(OH)₂D₃ in the lung tissue and BALF to within statistical indifference of control levels (Fig. 2).

Chronic ethanol over-consumption modulates vitamin D receptor protein levels

An increase of vitamin D receptor presence (49 %) was quantified in the lung tissue of ethanol-exposed mice as compared to the non-ethanol-exposed control group. The dietary supplementation of DADS completely ablated the ethanol-induced increase in vitamin D receptor protein levels, resulting in an ethanol and DADS co-exposure vitamin D receptor profile that is statistically indifferent to the control group (Fig. 3).

Chronic ethanol consumption and daily dietary DADS supplementation modulate vitamin D-activating phase 1 metabolizing enzyme Cyp27B1 and inducible phase 1 metabolizing enzyme Cyp2E1

Cyp27B1, the primary vitamin D-activating enzyme, was reduced in the lung tissue ethanol-exposed mice by 35 % as compared to the non-ethanol-exposed controls. The dietary co-exposure of ethanol and DADS resulted in a 65 % recovery of lung tissue levels of Cyp27B1. Also observed was an ethanol-mediated increase of 35 % in CYP2E1 lung tissue protein levels as compared to the non-ethanol-exposed control group. The dietary co-exposure of ethanol and DADS resulted in CYP2E1 lung tissue levels statistically indistinguishable from the control group (Fig. 4).

Gene expression in tracheal epithelial cells of ethanol and diallyl disulfide-fed mice

Gene expression was quantified in tracheal epithelial cells of 7-week ethanol and diallyl disulfide (DADS)-fed mice. A statistically significant ethanol-mediated three-fold upregulation of gene expression was observed in calcidiol-converting enzyme CYP27B1 gene expression. This upregulation was attenuated by DADS co-exposure (Fig. 5a). A non-statistical ethanol-mediated sevenfold upregulation of ethanol-induced VDR gene expression was observed, and the co-exposure of DADS attenuated this upregulation (Fig. 5b). A statistically significant increase in CYP2E1 gene expression was observed in the ethanol-fed mice that was ablated by co-exposure to DADS (Fig. 5c). A slight non-statistically significant reduction in CYP24A1 gene expression was observed in the tracheal epithelial cells of chronic ethanol and diallyl disulfide-fed mice (Fig. 5d).

Discussion

The association between pulmonary infections and chronic ethanol over-consumption has been well established in the medical community. Pulmonary infections have been known to occur more frequently and lead to a higher rate of mortality in people who chronically over-consume ethanol [11, 48]. Also, recent publications have presented laboratory and epidemiological data describing the role chronic alcohol over-consumption has on systemic vitamin D activation [40] and in immune and inflammatory responses [12]. The objectives of this study were to investigate the proposed mechanisms by which ethanol over-consumption

reduces active vitamin D availability in lung tissue and the pulmonary epithelium lining environment (ELE). As observed in this study, chronic ethanol over-consumption did not statistically change blood serum levels of inactive vitamin D (25(OH)D₃), but lung tissue levels of 25(OH)D₃ were statistically lower than the control group. These seemingly incongruent results may be attributed to an abundance of dietary vitamin D precursor provided in standard rodent chow (>4000 IU, human equivalency dose) and a two compartment blood-pulmonary model acting under the influence of ethanol-induced metabolic disturbance. As ethanol is consumed and metabolized by liver enzymes, the upper airways are exposed to high amounts of ethanol for the duration of the hepatic metabolic process [13, 49]. Some extra-hepatic organs can generate and utilize phase I and II metabolic enzymes to modify xenobiotics and endogenous compounds. Often the extra-hepatic phase I metabolizing enzyme activity is utilized to activate hormones *in situ* such as vitamin D. However, under atypically high exposure conditions extra-hepatic enzymes can be temporarily inadequate to eliminate certain xenobiotics effectively. This transient state of increased exposure can result in increased xenobiotic resident times and potential organ or systemic damage. The prolonged exposure of ethanol to the bronchial/alveolar ELE of the upper airways results in reduced levels of inactive and active vitamin D in the surrounding parenchyma and ELE of ethanol-exposed mice. The bronchial ELE is the most likely location for upper respiratory infection as it is where the infectious agent meets the immune response of the lung [50]. Using BALF for a discrete assessment of vitamin D homeostasis in the pulmonary ELE, we observed a statistically significant reduction of ELE levels of 1,25(OH)₂D₃. As detailed in several published works [51, 52], insufficient levels of 25(OH)D₃, and in turn 1,25(OH)₂D₃, can lead to an improper functioning immune response. Chronic ethanol abusers have been reported to have difficulty resisting infections, particularly in hospitals. We speculate that ethanol-mediated active vitamin D depletion could have wide-ranging effects on inflammation and innate immune response, which could partially explain statistically higher nosocomial infection incidence and mortality in hospitalized ethanol abusers [52, 53].

The mechanism behind ethanol-induced, vitamin D deficiency-mediated infection susceptibility is likely associated with an innate response. If the ELE has insufficient levels of 1,25(OH)₂D₃, the TLR2/1-mediated immune response could be severely impacted, resulting in decreased infectious agent clearance and increased infection severity [54–56]. We observed in our study that (Fig. 2b) chronic ethanol consumption is effective in reducing pulmonary levels of 1,25(OH)₂D₃ at physiologically relevant dietary vitamin D₃ levels. It may be possible that this observation is mediated by the alveolar or bronchial epithelial cells in the pulmonary system. Our laboratory is actively investigating these potential cellular drivers of ethanol-mediated reductions in pulmonary levels of 1,25(OH)₂D₃.

According to our observations and supported by previously published work [9] ethanol at least partially exerts its 1,25(OH)₂D₃-depleting effect via the inhibition of CYP27B1. CYP27B1 is the primary metabolizing enzyme that converts inactive vitamin D into active vitamin D—1,25(OH)₂D₃. The observed statistically significant reduction in pulmonary levels of CYP27B1 juxtaposed against the increase in pulmonary levels of CYP2E1 in chronic ethanol over-consuming mice leads us to postulate that the metabolic fate of these enzymes may be intertwined. Interestingly enough as the protein levels of CYP27B1 were

lower in the ethanol-exposed group (Fig. 4a), gene expression of CYP27B1 was modulated up threefold (Fig. 5a). We believe that the reduction of CYP27B1 in the lung tissue of chronically ethanol-fed mice and comparatively lower 1,25(OH)₂D₃ observed in the lung tissue and BALF of ethanol-fed mice resulted in a physiological, genetic response to initiate CYP27B1 gene expression to maintain active vitamin D homeostasis. We believe similar mechanisms are influencing the observed VDR gene (Fig. 5b) and protein (Fig. 3) upregulation observed in the chronically ethanol-fed group. As pulmonary levels of 1,25(OH)₂D₃ are reduced by chronic ethanol consumption, to maintain homeostasis, VDR gene expression is upregulated along with the increase of VDR presence. VDR upregulation in response to depleted vitamin D levels has been detailed in other published work and appears to be a normal homeostatic response [57]. As mentioned previously, dietary supplementation of DADS reversed the observed ethanol-mediated gene expression effects.

When ethanol-induced CYP2E1 presence was inhibited by the dietary supplementation of DADS, pulmonary active vitamin D—1,25(OH)₂D₃, and CYP27B1 proteins levels recovered. This observation also leads us to infer that it is possible that CYP2E1-mediated ethanol metabolism and/or metabolic intermediates are negative regulators of CYP27B1 function leading to reduced 1,25(OH)₂D₃ levels. This theory is supported by published work [58] as well as the observed lack of efficacy of DADS supplementation in attenuating ethanol-mediated reductions in lung tissue 25(OH)D₃ as compared to the observed efficacy of DADS in recovering lung tissue levels of 1,25(OH)₂D₃.

Conclusions

The literature is replete with articles describing ethanol's ability to induce CYP2E1 [14, 59, 60]. However, we have confirmed that this induction can be attenuated in the lung tissue of ethanol-fed mice by dietary consumption of DADS (~0.18 µg/day). The ability of DADS to attenuate the ethanol-induced reduction of 1,25(OH)₂D₃ in tissue and BALF could lie in its capacity to inhibit CYP2E1 activity and ultimately, the genesis of CYP2E1-mediated reactive oxidative metabolites, such as malondialdehyde, 4-hydroxynonenal, and hydroxyethyl radical [61, 62]. Future research is warranted to evaluate this possibility.

Not only is proper 1,25(OH)₂D₃ function essential for effective defensin and cathelicidin/LL-37 activity in infection resistance [21, 63, 64] but also 1,25(OH)₂D₃ is critical to macrophage maturation, phagocytic ability, and general immune response [54, 65]. Understanding the mechanisms driving ethanol-induced pulmonary vitamin D dysmetabolism could not only help alleviate the high morbidity and mortality associated with respiratory infection rates in chronic ethanol over-consumers [52, 53] but also possibly provide general prophylaxis options for immunocompromised patients in hospital settings.

Acknowledgements

MM would like to thank all of the basic and clinical scientists in the Division of Pulmonary, Critical Care, Sleep and Allergy at the University of Nebraska Medical Center for the research support provided in making this and other similar manuscripts possible.

This work was supported with resources and the use of facilities at the Omaha VA Medical Center, Omaha, NE (Department of Veterans Affairs [VA merit Review 101 BX000728] to TAW). This work was also supported by NIH-NIAAA (3R01AA017993)

References

1. Pleis JR, Ward BW, Lucas JW. Summary health statistics for U.S. adults: National Health Interview Survey, 2009. *Vital Health Stat* 10. 2010; 249:1–207. [PubMed: 21905346]
2. Schuppan D, Afdhal NH. Liver cirrhosis. *Lancet*. 2008; 371(9615):838–51. [PubMed: 18328931]
3. Carithers, RL.; McClain, C. Alcoholic liver disease. In: Feldman, M.; Friedman, LS.; Brandt, LJ., editors. *Feldman: Sleisinger and Fortran's gastrointestinal and liver disease*. 9th ed.. Saunders Elsevier; Philadelphia, Pa: 2010.
4. Napolitano LM, Koruda MJ, Zimmerman K, McCowan K, Chang J, Meyer AA. Chronic ethanol intake and burn injury: evidence for synergistic alteration in the gut and immune integrity. *J Trauma*. 1995; 38(2):198–207. [PubMed: 7869435]
5. Lebowitz MD. Respiratory symptoms and diseases related to alcohol consumption. *Am Rev Respir Dis*. 1981; 123:16–9. [PubMed: 7458081]
6. Capps JA, Coleman GH. Influence of alcohol on prognosis of pneumonia in cook county hospital. *JAMA*. 1923; 80:750–2.
7. Jong GM, Hsiue TR, Chen CR. Rapidly fatal outcome of bacteremic klebsiella pneumoniae pneumonia in alcoholics. *Chest*. 1995; 107:214–7. [PubMed: 7813281]
8. Leevy CM. Clinical diagnosis, evaluation and treatment of liver disease in alcoholics. *Fed Proc*. 1967; 26(5):1474–81. [PubMed: 4383131]
9. Kent JC, Devlin RD, Gutteridge DH, Retallack RW. Effect of alcohol on renal vitamin D metabolism in chickens. *Biochem Biophys Res Commun*. 1979; 89(1):155–61. [PubMed: 475805]
10. Engs RC, Aldo-Benson M. The association of alcohol consumption with self-reported illness in university students. *Psychol Rep*. 1995; 76(3 Pt 1):727–36. [PubMed: 7568584]
11. Fernandez-Sola J, Junque A, Estruch R, Monforte R, Torres A, Urbano-Marquez A. High alcohol intake as a risk and prognostic factor for community-acquired pneumonia. *Arch Intern Med*. 1995; 155(15):1649–54. [PubMed: 7618989]
12. Moss M, Bucher B, Moore FA, Moore EE, Parsons PE. The role of chronic alcohol abuse in the development of acute respiratory distress syndrome in adults. *JAMA*. 1996; 275(1):50–4. [PubMed: 8531287]
13. Sisson JH. Alcohol and airways function in health and disease. *Alcohol*. 2007; 41(5):293–307. [PubMed: 17764883]
14. Bardag-Gorce F, French BA, Nan L, Song H, Nguyen SK, Yong H, et al. CYP2E1 induced by ethanol causes oxidative stress, proteasome inhibition and cytokeratin aggregates (Mallory body-like) formation. *Exp Mol Pathol*. 2006; 81(3):191–201. [PubMed: 17034788]
15. Holick MF. Vitamin D, deficiency. *N Engl J Med*. 2007; 357(3):266–81. [PubMed: 17634462]
16. Janssens W, Lehouck A, Carremans C, Bouillon R, Mathieu C, Decramer M. Vitamin D beyond bones in chronic obstructive pulmonary disease: time to act. *Am J Respir Crit Care Med*. 2009; 179(8):630–6. [PubMed: 19164701]
17. Omdahl JL, DeLuca HF. Regulation of vitamin D metabolism and function. *Physiol Rev*. 1973; 53(2):327–72. [PubMed: 4267263]
18. Jacobs ET, Van Pelt C, Forster RE, Zaidi W, Hibler EA, Galligan MA, et al. CYP24A1 and CYP27B1 polymorphisms modulate vitamin D metabolism in colon cancer cells. *Cancer Res*. 2013; 73(8):2563–73. [PubMed: 23423976]
19. Agerberth B, Grunewald J, Castanos-Velez E, Olsson B, Jörnvall H, Wigzell H, et al. Antibacterial components in bronchoalveolar lavage fluid from healthy individuals and sarcoidosis patients. *Am J Respir Crit Care Med*. 1999; 160(1):283–90. [PubMed: 10390413]
20. Bals R, Goldman MJ, Wilson JM. Mouse beta-defensin 1 is a salt-sensitive antimicrobial peptide present in epithelia of the lung and urogenital tract. *Infect Immun*. 1998; 66(3):1225–32. [PubMed: 9488417]

21. Hansdottir S, Monick MM, Hinde SL, Lovan N, Look DC, Hunninghake GW. Respiratory epithelial cells convert inactive vitamin D to its active form: potential effects on host defense. *J Immunol.* 2008; 181(10):7090–9. [PubMed: 18981129]
22. Berger U, Wilson P, McClelland RA, Colston K, Haussler MR, Pike JW, et al. Immunocytochemical detection of 1,25-dihydroxyvitamin D receptors in normal human tissues. *J Clin Endocrinol Metab.* 1988; 67(3):607–13. [PubMed: 2842365]
23. Hughes DA, Norton R. Vitamin D and respiratory health. *Clin Exp Immunol.* 2009; 158(1):20–5. [PubMed: 19737226]
24. Baeke F, van Etten E, Gysemans C, Overbergh L, Mathieu C. Vitamin D signaling in immune-mediated disorders: evolving insights and therapeutic opportunities. *Mol Aspects Med.* 2008; 29(6):376–87. [PubMed: 18621414]
25. Grant WB, Cross HS, Garland CF, Gorham ED, Moan J, Peterlik M, et al. Estimated benefit of increased vitamin D status in reducing the economic burden of disease in western Europe. *Prog Biophys Mol Biol.* 2009; 99(2–3):104–13. [PubMed: 19268496]
26. Wargovich MJ. Diallyl sulfide, a flavor component of garlic (*Allium sativum*), inhibits dimethylhydrazine-induced colon cancer. *Carcinogenesis.* 1987; 8(3):487–9. [PubMed: 3815744]
27. Wu CC, Chung JG, Tsai SJ, Yang JH, Sheen LY. Differential effects of allyl sulfides from garlic essential oil on cell cycle regulation in human liver tumor cells. *Food Chem Toxicol.* 2004; 42(12):1937–47. [PubMed: 15500931]
28. Sheen LY, Lii CK, Sheu SF, Meng RH, Tsai SJ. Effect of the active principle of garlic—diallyl sulfide—on cell viability, detoxification capability and the antioxidation system of primary rat hepatocytes. *Food Chem Toxicol.* 1996; 34(10):971–8. [PubMed: 9012772]
29. Green M, Newell O, Aboyade-Cole A, Darling-Reed S, Thomas RD. Diallyl sulfide induces the expression of estrogen metabolizing genes in the presence and/or absence of diethylstilbestrol in the breast of female ACI rats. *Toxicol Lett.* 2007; 168(1):7–12. [PubMed: 17129689]
30. Thomas RD, Green MR, Wilson C, Sadrud-Din S. Diallyl sulfide inhibits the oxidation and reduction reactions of stilbene estrogens catalyzed by microsomes, mitochondria and nuclei isolated from breast tissue of female ACI rats. *Carcinogenesis.* 2004; 25(5):787–91. [PubMed: 12949044]
31. Thomas RD, Roy D. Mitochondrial enzyme-catalyzed oxidation and reduction reactions of stilbene estrogen. *Carcinogenesis.* 1995; 16(4):891–5. [PubMed: 7728971]
32. Taubert D, Glockner R, Muller D, Schomig E. The garlic ingredient diallyl sulfide inhibits cytochrome P450 2E1 dependent bioactivation of acrylamide to glycidamide. *Toxicol Lett.* 2006; 164(1):1–5. [PubMed: 16337756]
33. Jin L, Baillie TA. Metabolism of the chemoprotective agent diallyl sulfide to glutathione conjugates in rats. *Chem Res Toxicol.* 1997; 10(3):318–27. [PubMed: 9084912]
34. Sapkota M, Hottor TK, DeVasure JM, Wyatt TA, McCaskill ML. Protective role of CYP2E1 inhibitor diallyl disulfide (DADS) on alcohol-induced malondialdehyde-deoxyguanosine (M1dG) adduct formation. *Alcohol Clin Exp Res.* 2014; 38(6):1550–8. [PubMed: 24891074]
35. Green M, Wilson C, Newell O, Sadrud-Din S, Thomas R. Diallyl sulfide inhibits diethylstilbesterol-induced DNA adducts in the breast of female ACI rats. *Food Chem Toxicol.* 2005; 43(9):1323–31. [PubMed: 15989972]
36. Yi L, Ji XX, Lin M, Tan H, Tang Y, Wen L, et al. Diallyl disulfide induces apoptosis in human leukemia HL-60 cells through activation of JNK mediated by reactive oxygen. *Pharmazie.* 2010; 65(9):693–8. [PubMed: 21038848]
37. Galeone C, Pelucchi C, Levi F, Negri E, Franceschi S, Talamini R, et al. Onion and garlic use and human cancer. *Am J Clin Nutr.* 2006; 84(5):1027–32. [PubMed: 17093154]
38. Kim JY, Kwon O. Garlic intake and cancer risk: an analysis using the food and drug administration’s evidence-based review system for the scientific evaluation of health claims. *Am J Clin Nutr.* 2009; 89(1):257–64. [PubMed: 19056580]
39. Moazed F, Calfee CS. Environmental risk factors for acute respiratory distress syndrome. *Clin Chest Med.* 2014; 35(4):625–37. [PubMed: 25453414]
40. Shankar K, Liu X, Singhal R, Chen JR, Nagarajan S, Badger TM, et al. Chronic ethanol consumption leads to disruption of vitamin D3 homeostasis associated with induction of renal 1,25

- dihydroxyvitamin D3-24-hydroxylase (CYP24A1). *Endocrinology*. 2008; 149(4):1748–56. [PubMed: 18162528]
41. Song K, Coleman RA, Zhu X, Alber C, Ballas ZK, Waldschmidt TJ, et al. Chronic ethanol consumption by mice results in activated splenic T cells. *J Leukoc Biol*. 2002; 72(6):1109–16. [PubMed: 12488491]
 42. Navarrette CR, Sisson JH, Nance E, Allen-Gipson D, Hanes J, Wyatt TA. Particulate matter in cigarette smoke increases ciliary axoneme beating through mechanical stimulation. *J Aerosol Med Pulm Drug Deliv*. 2012; 25(3):159–68. [PubMed: 22280523]
 43. Spitzer JH, Meadows GG. Modulation of perforin, granzyme A, and granzyme B in murine natural killer (NK), IL2 stimulated NK, and lymphokine-activated killer cells by alcohol consumption. *Cell Immunol*. 1999; 194(2):205–12. [PubMed: 10383823]
 44. Wyatt TA, Spurzem JR, May K, Sisson JH. Regulation of ciliary beat frequency by both PKA and PKG in bovine airway epithelial cells. *Am J Physiol*. 1998; 275(4 Pt 1):L827–35. [PubMed: 9755116]
 45. Elliott MK, Sisson JH, West WW, Wyatt TA. Differential in vivo effects of whole cigarette smoke exposure versus cigarette smoke extract on mouse ciliated tracheal epithelium. *Exp Lung Res*. 2006; 32(3–4):99–118. [PubMed: 16754475]
 46. Elliott MK, Sisson JH, Wyatt TA. Effects of cigarette smoke and alcohol on ciliated tracheal epithelium and inflammatory cell recruitment. *Am J Respir Cell Mol Biol*. 2007; 36(4):452–9. [PubMed: 17079783]
 47. McCaskill ML, Romberger DJ, DeVasure J, Boten J, Sisson JH, Bailey KL, et al. Alcohol exposure alters mouse lung inflammation in response to inhaled dust. *Nutrients*. 2012; 4(7):695–710. [PubMed: 22852058]
 48. Zhang P, Bagby GJ, Happel KI, Raasch CE, Nelson S. Alcohol abuse, immunosuppression, and pulmonary infection. *Curr Drug Abuse Rev*. 2008; 1(1):56–67. [PubMed: 19630706]
 49. Wang Y, Walter G, Herting E, Agerberth B, Johansson J. Antibacterial activities of the cathelicidins prophenin (residues 62 to 79) and LL-37 in the presence of a lung surfactant preparation. *Antimicrob Agents Chemother*. 2004; 48(6):2097–100. [PubMed: 15155206]
 50. Guilbert TW, Denlinger LC. Role of infection in the development and exacerbation of asthma. *Expert Rev Respir Med*. 2010; 4(1):71–83. [PubMed: 20305826]
 51. Gombart AF, Borregaard N, Koeffler HP. Human cathelicidin antimicrobial peptide (CAMP) gene is a direct target of the vitamin D receptor and is strongly up-regulated in myeloid cells by 1,25-dihydroxyvitamin D3. *FASEB J*. 2005; 19(9):1067–77. [PubMed: 15985530]
 52. White M, Mankan A, Lawless MW, O'Dwyer MJ, McManus R, Ryan T. Mortality in humans with pneumonia and sepsis is related to an uncompensated anti-inflammatory response to infection. *Arch Intern Med*. 2008; 168(13):1468–9. [PubMed: 18625929]
 53. Gombart AF. The vitamin D-antimicrobial peptide pathway and its role in protection against infection. *Future Microbiol*. 2009; 4(9):1151–65. [PubMed: 19895218]
 54. Wientroub S, Winter CC, Wahl SM, Wahl LM. Effect of vitamin D deficiency on macrophage and lymphocyte function in the rat. *Calcif Tissue Int*. 1989; 44(2):125–30. [PubMed: 2492888]
 55. DeLuca HF. Overview of general physiologic features and functions of vitamin D. *Am J Clin Nutr*. 2004; 80(6 Suppl):1689S–96. [PubMed: 15585789]
 56. Puerta-Guardo H, De la Cruz H, Hernández De la Cruz SI, Rosales VH, Ludert JE, del Angel RM. The 1 α ,25-dihydroxy-vitamin D3 reduces dengue virus infection in human myelomonocyte (U937) and hepatic (huh-7) cell lines and cytokine production in the infected monocytes. *Antiviral Res*. 2012; 94(1):57–61. [PubMed: 22387385]
 57. Lam NN, Triliana R, Sawyer RK, Atkins GJ, Morris HA, O'Loughlin PD, et al. Vitamin D receptor overexpression in osteoblasts and osteocytes prevents bone loss during vitamin D-deficiency. *J Steroid Biochem Mol Biol*. 2014; 144(Pt A):128–31. [PubMed: 24434283]
 58. Terelius Y, Norsten-Hoog C, Cronholm T, Ingelman-Sundberg M. Acetaldehyde as a substrate for ethanol-inducible cytochrome P450 (CYP2E1). *Biochem Biophys Res Commun*. 1991; 179(1):689–94. [PubMed: 1822117]
 59. Jaeschke H, Gores GJ, Cederbaum AI, Hinson JA, Pessayre D, Lemasters JJ. Mechanisms of hepatotoxicity. *Toxicol Sci*. 2002; 65(2):166–76. [PubMed: 11812920]

60. Wang T, Shankar K, Bucci TJ, Warbritton A, Mehendale HM. Diallyl sulfide inhibition of CYP2E1 does not rescue diabetic rats from thioacetamide-induced mortality. *Toxicol Appl Pharmacol.* 2001; 173(1):27–37. [PubMed: 11350212]
61. Niemela O, Parkkila S, Pasanen M, Viitala K, Villanueva JA, Halsted CH. Induction of cytochrome P450 enzymes and generation of protein-aldehyde adducts are associated with sex-dependent sensitivity to alcohol-induced liver disease in micropigs. *Hepatology.* 1999; 30(4):1011–7. [PubMed: 10498654]
62. Niemela O, Parkkila S, Yla-Herttuala S, Villanueva J, Ruebner B, Halsted CH. Sequential acetaldehyde production, lipid peroxidation, and fibrogenesis in micropig model of alcohol-induced liver disease. *Hepatology.* 1995; 22(4 Pt 1):1208–14. [PubMed: 7557872]
63. Aloia JF, Talwar SA, Pollack S, Yeh J. A randomized controlled trial of vitamin D3 supplementation in African American women. *Arch Intern Med.* 2005; 165(14):1618–23. [PubMed: 16043680]
64. Lee H, Andalibi A, Webster P, Moon SK, Teufert K, Kang SH, et al. Antimicrobial activity of innate immune molecules against *Streptococcus pneumoniae*, *Moraxella catarrhalis* and nontypeable *Haemophilus influenzae*. *BMC Infect Dis.* 2004; 4(1):12. [PubMed: 15125783]
65. Janssens W, Bouillon R, Claes B, Carremans C, Lehouck A, Buysschaert I, et al. Vitamin D deficiency is highly prevalent in COPD and correlates with variants in the vitamin D-binding gene. *Thorax.* 2010; 65(3):215–20. [PubMed: 19996341]

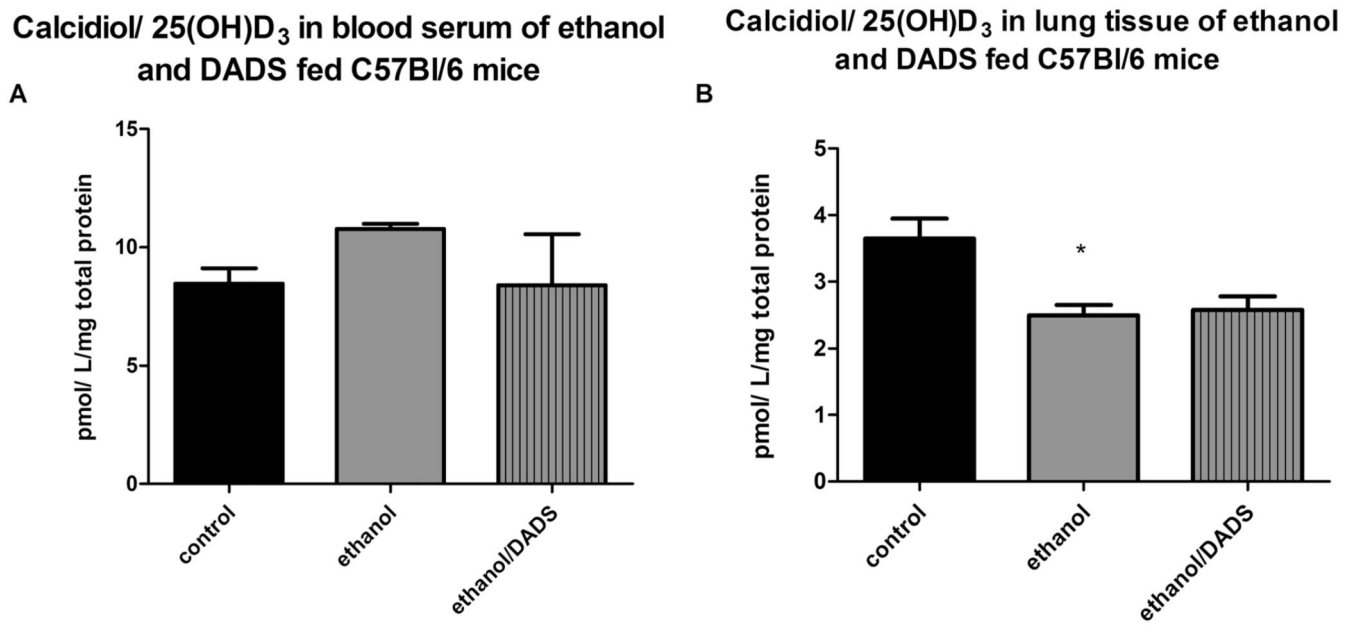


Fig. 1. 25(OH)D₃ blood serum and lung tissue levels in 8-week ethanol- and diallyl disulfide (DADS)-fed mice. **a** Ethanol exposure resulted in statistically unchanged levels of calcidiol in the serum. **b** Lung tissue levels of calcidiol were reduced by ~50 % in the ethanol-exposed mice ($N=7$). * $p < 0.05$ ethanol compared to the control

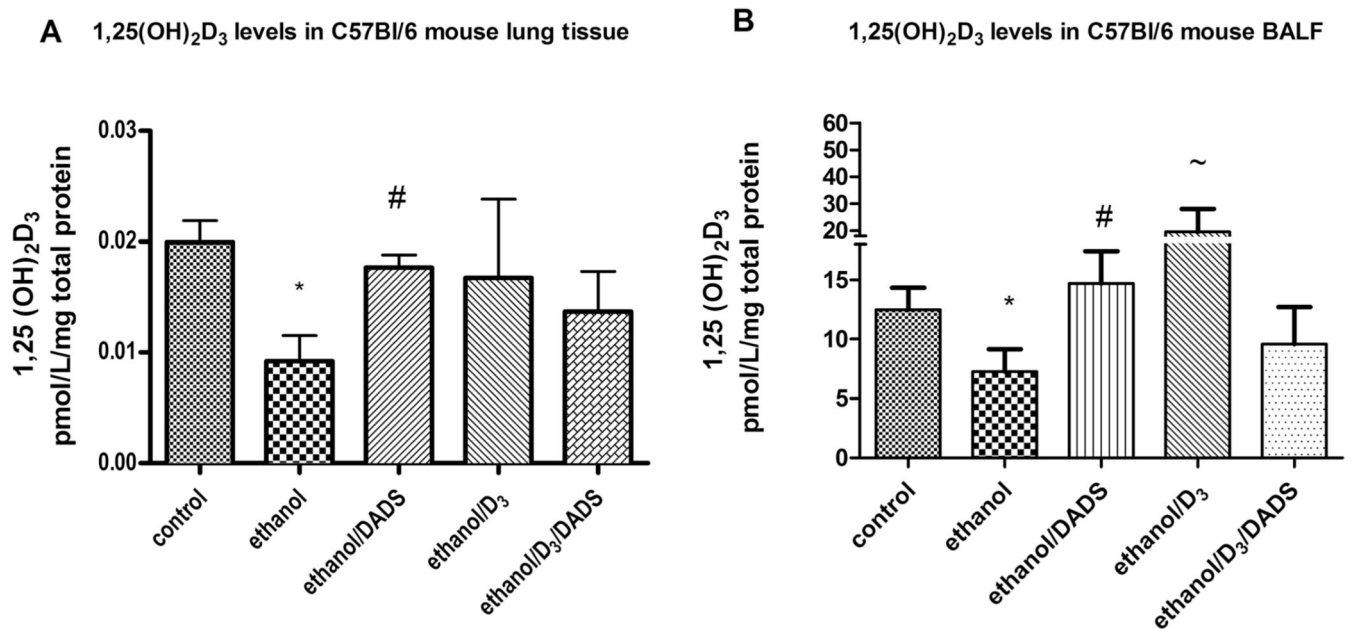


Fig. 2.

1,25(OH)₂D₃ levels in lung tissue and BALF of ethanol- and DADS-fed mice. Levels of 1,25(OH)₂D₃ in lung tissue and BALF of ethanol, 25(OH)D₃, and DADS-fed mice. **a** Chronic dietary ethanol exposure reduced lung tissue levels of 1,25(OH)₂D₃ by ~50 %, and dietary consumption of DADS recovered 1,25(OH)₂D₃ by ~85 %. **b** Chronic dietary ethanol reduced BALF 1,25(OH)₂D₃ levels by ~46 %, and the co-exposure of dietary DADS recovered 1,25(OH)₂D₃ to control levels. Dietary exposure to higher concentrations of vitamin D₃/cholecalciferol (0.25 µg/day) induces the production of 1,25(OH)₂D₃ to more than three times control levels. Ethanol consumption in the higher vitamin D₃ reduced 1,25(OH)₂D₃ by ~50 %. *N* = 7 **p* < 0.05 compared to control, #*p* < 0.05 compared to ethanol, ~*p* < 0.05 compared to D₃ group using one-way ANOVA

Vitamin D Receptor (VDR) levels in the lung tissue of ethanol and DADS fed mice

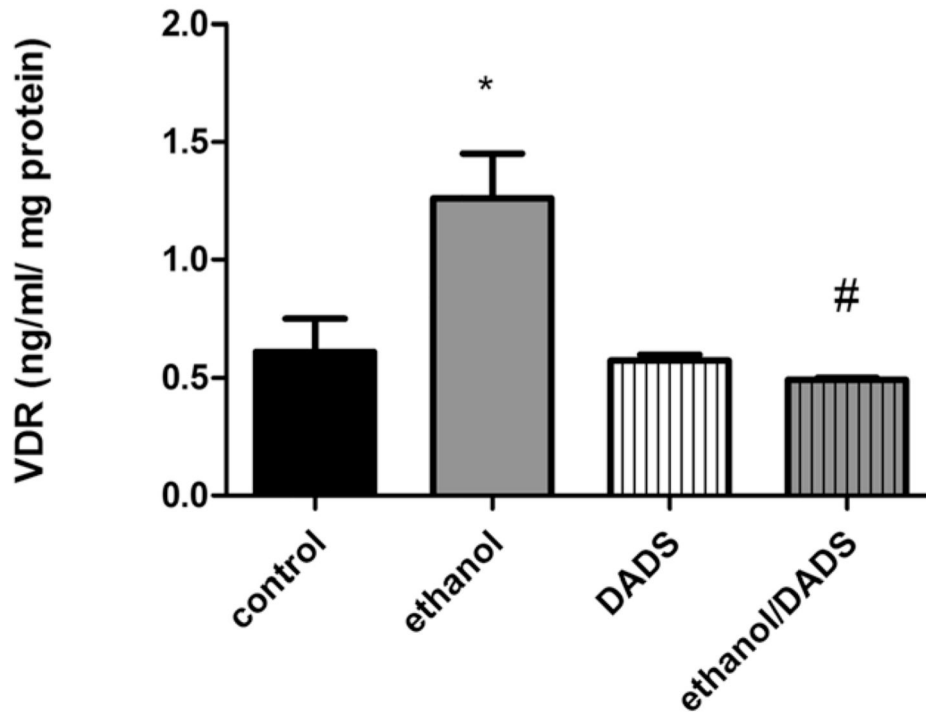
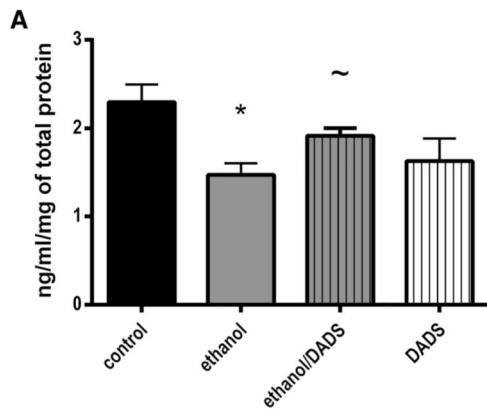


Fig. 3.

Vitamin D receptor (VDR) levels in 8-week ethanol- and DADS-fed mice. VDR levels were ~49 % higher in the lung tissue of 8-week ethanol-fed mice. The dietary supplementation of DADS completely ablated this ethanol-induced response ($N=7$). * $p < 0.05$ compared to control, # $p < 0.05$ compared to ethanol group

CYP27B1 protein levels in the lung tissue of ethanol and DADS-fed C57Bl/6 mice



CYP2E1 protein levels in the lung tissue of ethanol and DADS-fed C57Bl/6 mice

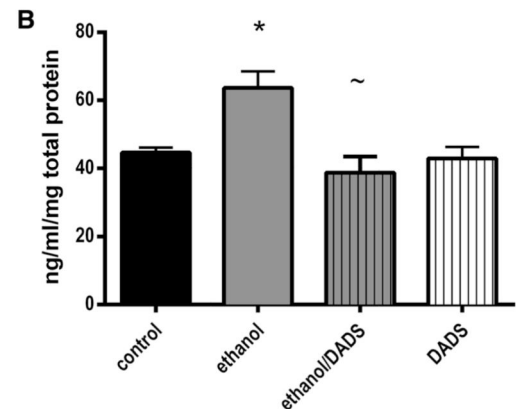


Fig. 4.

CYP27B1 and CYP2E1 enzyme levels in lung tissue of ethanol-fed mice with dietary supplementation of DADS. **a** CYP27B1 levels in ethanol-fed mice were ~35 % less than the levels in the ethanol group compared to the control. The dietary supplementation of DADS recovered this ethanol-induced reduction by 65 %. **b** CYP2E1 levels in ethanol-fed mice were statistically significantly increased by ~32 %. This upregulation of CYP2E1 protein was completely ablated by the dietary supplementation of DADS ($N=7$). * $p < 0.05$ compared to control, ~ $p < 0.05$ compared to ethanol group

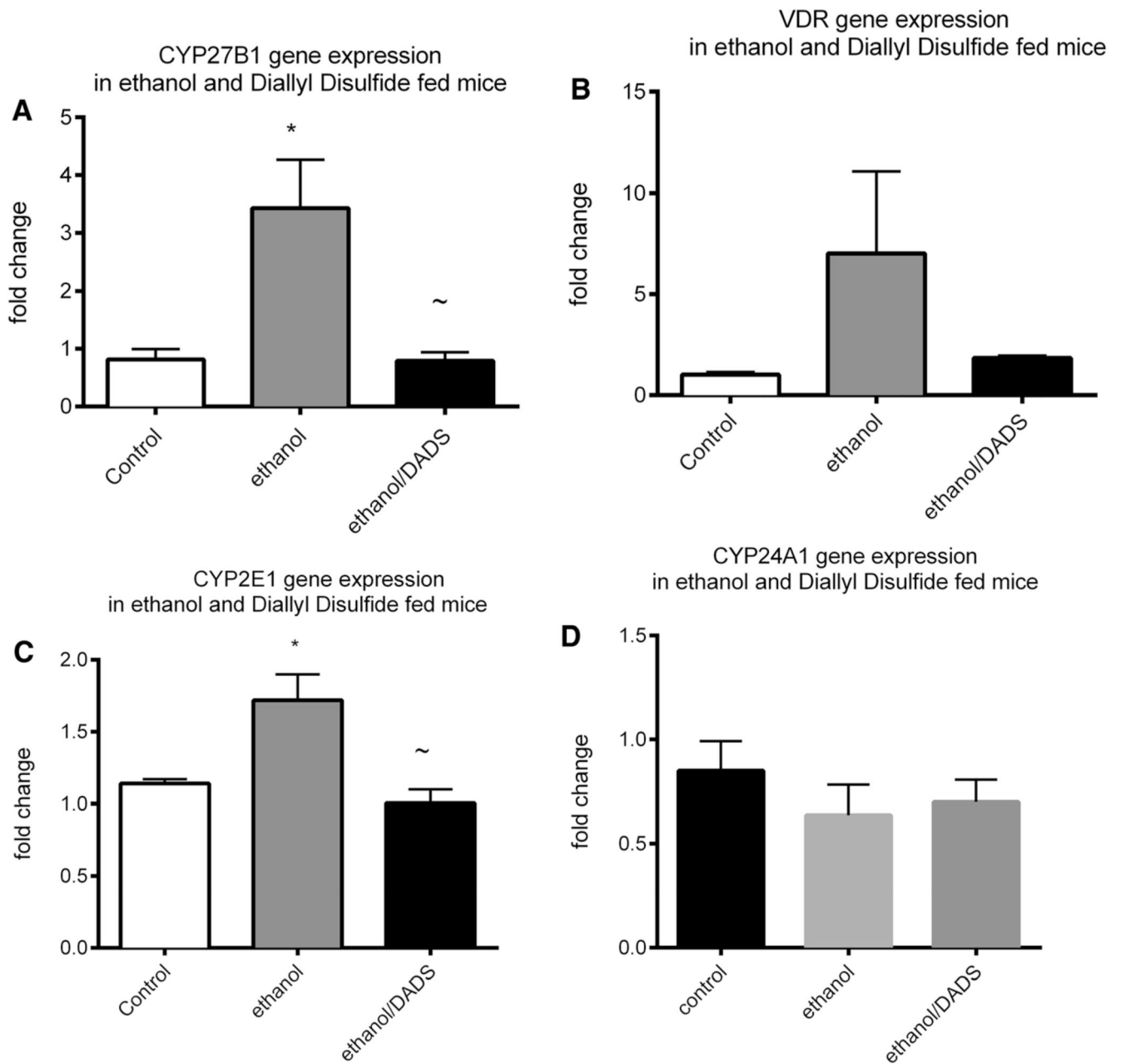


Fig. 5. Gene expression in tracheal epithelial cells of ethanol and diallyl disulfide-fed mice. Gene expression was quantified in tracheal epithelial cells of 6-week ethanol- and diallyl disulfide (DADS)-fed mice. **a** An ethanol-mediated threefold upregulation of gene expression was observed in calcidiol-converting enzyme CYP27B1 gene expression. This upregulation was attenuated by DADS co-exposure. **b** A non-statistical ethanol-mediated sevenfold upregulation of ethanol-induced VDR gene expression was observed, and the co-exposure of DADS attenuated this upregulation. **c** A statistically significant increase in gene expression was observed in acetaldehyde-producing CYP2E1 in ethanol-fed mice that was ablated by co-exposure to DADS. **d** A slight non-statistically significant reduction in CYP24A1 gene

expression was observed in the tracheal epithelial cells of chronic ethanol and diallyl disulfide-fed mice ($N=7$; $*p < 0.05$ as compared to the control group, $\sim p < 0.05$ as compared to the ethanol group)

Author Manuscript

Author Manuscript

Author Manuscript

Author Manuscript