



OPEN

Author Correction: Deep learning of ECG waveforms for diagnosis of heart failure with a reduced left ventricular ejection fraction

JungMin Choi, Sungjae Lee, Mineok Chang, Yeha Lee, Gyu Chul Oh & Hae-Young Lee

Correction to: *Scientific Reports* <https://doi.org/10.1038/s41598-022-18640-8>, published online 20 August 2022

The original version of this Article contained an error in Figure 5, where the label of the orange-colored line in panel (b) was incorrectly given as "DeepECG HFrEF (-) among EF < 40%". The original Figure 5 and accompanying legend appear below.

The original Article has been corrected.

Published online: 13 October 2022

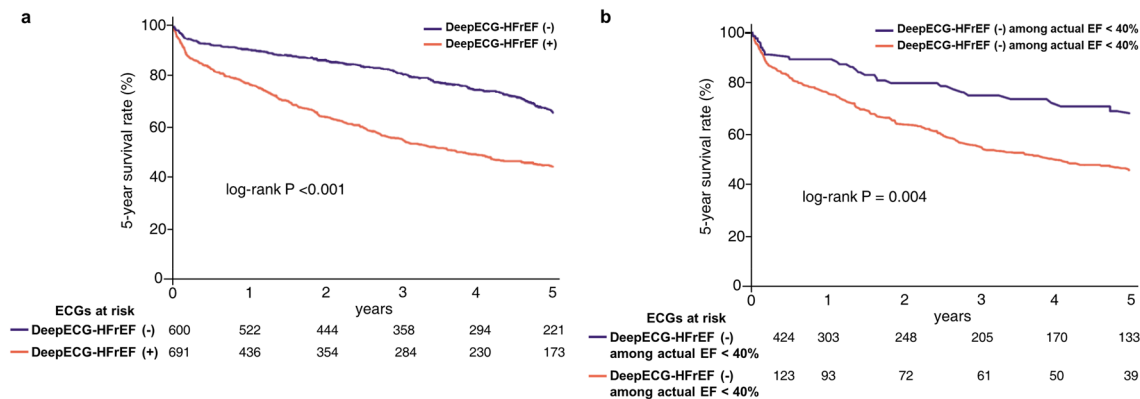



Figure 5. (a) Kaplan–Meier curve for mortality at 5-year follow up according to the DeepECG-HFrEF (Total ECGs = 1291) (b) Kaplan–Meier curve for mortality at 5-year follow up according to the DeepECG-HFrEF among patients with actual EF < 40%—The patients classified as DeepECG-HFrEF positive showed worse 5-year survival. ECG electrocardiogram; EF ejection fraction.

 **Open Access** This article is licensed under a Creative Commons Attribution 4.0 International License, which permits use, sharing, adaptation, distribution and reproduction in any medium or format, as long as you give appropriate credit to the original author(s) and the source, provide a link to the Creative Commons licence, and indicate if changes were made. The images or other third party material in this article are included in the article’s Creative Commons licence, unless indicated otherwise in a credit line to the material. If material is not included in the article’s Creative Commons licence and your intended use is not permitted by statutory regulation or exceeds the permitted use, you will need to obtain permission directly from the copyright holder. To view a copy of this licence, visit <http://creativecommons.org/licenses/by/4.0/>.

© The Author(s) 2022