

## Research Article

# p38 MAPK Endogenous Inhibition Improves Neurological Deficits in Global Cerebral Ischemia/Reperfusion Mice

Kun Hou <sup>1,2</sup>, Zhi-cheng Xiao <sup>2,3</sup> and Hai-Long Dai <sup>1</sup>

<sup>1</sup>Key Laboratory of Cardiovascular Disease of Yunnan Province, Clinical Medicine Center for Cardiovascular Disease of Yunnan Province, Department of Cardiology, Yan'an Affiliated Hospital of Kunming Medical University, Kunming 650500, China

<sup>2</sup>Yunnan Key Laboratory of Stem Cell and Regenerative Medicine, Institute of Molecular and Clinical Medicine, Kunming Medical University, Kunming 650500, China

<sup>3</sup>Department of Anatomy and Developmental Biology, Monash University, Clayton 3800, Australia

Correspondence should be addressed to Zhi-cheng Xiao; [zhicheng.xiao@monash.edu](mailto:zhicheng.xiao@monash.edu) and Hai-Long Dai; [dhlkm@qq.com](mailto:dhlkm@qq.com)

Received 3 November 2021; Revised 2 May 2022; Accepted 31 May 2022; Published 29 June 2022

Academic Editor: Gabriele Sansevero

Copyright © 2022 Kun Hou et al. This is an open access article distributed under the Creative Commons Attribution License, which permits unrestricted use, distribution, and reproduction in any medium, provided the original work is properly cited.

Cerebral ischemia/reperfusion (I/R) injury is a complex pathophysiological process that can lead to neurological function damage and the formation of cerebral infarction. The p38 MAPK pathway has attracted considerable attention in cerebral I/R injury (IRI), but little research has been carried out on its direct role *in vivo*. In this study, to observe the effects of p38 MAPK endogenous inhibition on cerebral IRI, p38 heterozygous knockdown (p38<sup>KI/+</sup>) mice were used. We hypothesized that p38 signaling might be involved in I/R injury and neurological damage reduction and that neurological behavioral deficits improve when p38 MAPK is inhibited. First, we examined the neurological damage and neurological behavioral deficit effects of I/R injury in WT mice. Cerebral I/R injury was induced by the bilateral common carotid artery occlusion (BCCAO) method. The cerebral infarction area and volume were assessed and analyzed by 2,3,5-triphenyltetrazolium chloride (TTC) staining. p38 MAPK and caspase-3 were detected by western blotting. Neuronal apoptosis was measured using TUNEL staining. Neurological deficits were detected by behavioral testing. Furthermore, to assess whether these neuroprotective effects occurred when p38 MAPK was inhibited, p38 heterozygous knockdown (p38<sup>KI/+</sup>) mice were used. We found that p38 MAPK endogenous inhibition rescued hippocampal cell apoptosis, reduced ischemic penumbra, and improved neurological behavioral deficits. These findings showed that p38 MAPK endogenous inhibition had a neuroprotective effect on IRI and that p38 MAPK may be a potential therapeutic target for cerebral IRI.

## 1. Introduction

Ischemic stroke is a serious threat to human life, it is the third leading cause of human death, and nearly 87% of strokes are caused by ischemia, but there are few effective treatments [1, 2]. Cerebral ischemia-reperfusion injury (IRI) refers to brain cells that are damaged after cerebral ischemia and very commonly occurs in cerebral infarction, shock, and suffocation caused by low blood-brain perfusion in clinical practice. IRI is generally thought to be another significant clinical problem in the treatment of cerebral damage, and the recovery of blood reperfusion cannot only lead to the recovery of tissue and organ function; in contrast, the phenomenon that further increases

the weight of ischemic injury is not yet completely understood [3].

Global cerebral ischemia has been reported to induce forebrain or whole-brain transient ischemia which can induce neuron loss in the hippocampal CA1 region [4]. With the increase in the occurrence rate of ischemic cerebrovascular disease, animal models have recently become a widespread concern. The bilateral common carotid artery occlusion (BCCAO) modeling method can be used to study transient global ischemia, has also been proposed as a model of vascular dementia, and has been widely used in recent years [5]. Cerebral IRI is a more complex mechanism involved in the pathophysiological process, and neuronal apoptosis is one of the most common forms of injury and

the process of apoptosis by gene regulation. It may also be linked to multiple behavioral and psychiatric changes and has usually been seen following stroke [6]. Although IRI has received considerable critical attention and has some progress in comprehending the mechanisms, there has been little established targeted therapy to safely and significantly lessen its effects [7]. There is a need to develop new prevention and treatment strategies for cerebral IRI.

Mitogen-activated protein kinase (MAPK) signal transduction pathways, such as the p38 pathway and the c-Jun N-terminal kinase (JNK), have been focused on cerebral ischemia/reperfusion. Mitogen-activated protein kinase p38 (p38 MAPK) is a key factor in various physiological processes such as cell growth, propagation, differentiation, death, and intercellular function. The p38 MAPK pathway has attracted considerable attention in IRI, but little research has been carried out on its direct role in vivo. In this study, to observe the effects of p38 MAPK endogenous inhibition on cerebral IRI, we hypothesized that p38 MAPK endogenous inhibition can reduce neurological deficits, neuronal apoptosis, and infarct volume in a cerebral IRI mouse model. To test this hypothesis, we examined the effects of BCCAO on neuronal degeneration, infarction area, hippocampal volume, neurological deficits, and the expression of p38 MAPK and caspase-3 in the hippocampus in wild-type mice and p38 heterozygous knockdown (p38<sup>KI/+</sup>) mice.

## 2. Materials and Methods

**2.1. Animals and Experimental Procedures.** C57BL/6 wild-type mice and p38<sup>KI/+</sup> mice were obtained from the Institute of Molecular and Cell Biology (Biopolis Drive, Proteos, Singapore). Transgenic animal models were used for the experiment as previously described [8]. Generation of the p38<sup>KI/+</sup> mice is by mutation and inactivation of phosphorylation of the Thr180 and Tyr182 sites, which were on the C57BL/6 background. They are fed with sterilized food and water. The animals were housed under controlled conditions: temperature (20–24°C) and humidity (50–60%), kept on a 12 h light/dark cycle. Adult male mice (8–10 weeks old) weighing 24 ± 2 g were used.

Healthy 9-week-old male C57BL/6 WT mice ( $n = 82$ ) and male p38<sup>KI/+</sup> mice ( $n = 18$ ) were selected and randomly divided into three experimental groups: (1) sham group ( $n = 14$ ): control C57BL/6 mice were exposed to only bilateral common carotid arteries (wild-type (WT) sham group); (2) WT & I/R group ( $n = 68$ ): ischemia/reperfusion in C57BL/6 mice; (3) p38<sup>KI/+</sup> & I/R group ( $n = 18$ ): ischemia/reperfusion in p38<sup>KI/+</sup> mice. All experimental procedures were reviewed and approved by the Ethics Committee of Kunming Medical University. In this study, all efforts were made to reduce the total number of animals used and minimize experimental animal suffering by following this principle. All experimental procedures were conducted following our Institutional Guidelines for Animal Research and the Guide of NIH (NIH Publication No. 85–23, revised 2011).

**2.2. Surgery for Induction of Ischemia and Reperfusion.** I/R-induced cerebral ischemia and reperfusion injury were induced in mice by bilateral common carotid artery occlusion (BCCAO), as previously methods described [9, 10]. Adult male mice weighing 25 ± 3 g were used. Briefly, mice were anaesthetized with intraperitoneal administration of pentobarbital sodium (1.0%, 80 mg/kg). Then, both vertebral arteries of mice were occluded permanently by electrocautery, both carotid arteries were isolated, and it was made to expose the common carotid arteries by a ventral midline incision. The vagus nerves were carefully separated. Two 3–0 sutures were hobbled in the common carotid arteries with temporarily termination of the blood circulation. At 20 min after occlusion, the sutures were removed, and the blood circulation was restarted. The same was done for the sham-operated control group except the occlusion of the two carotids. To be ready to react quickly and efficiently to surgery recovery for the mice, we used an electric heater (maintained at 36.5–37.5°C) after the operation.

**2.3. Western Blot Analysis.** Western blot experiments were performed as previously described in our lab [8]. The hippocampus was rapidly separated, and homogenates were lysed in RIPA buffer (Merck Millipore). Lysates from hippocampi were dissolved and then boiled in sample buffer (Bio-Rad) at 95°C for 5 minutes. Equal amounts of lysates were loaded on SDS-PAGE gels and transferred to PVDF membranes (Merck Millipore). The PVDF membranes were blocked in TBS-T containing 5% fat-free milk for 1 h. After blocking, the blots were incubated with the primary antibodies overnight at 4°C. This study used the following primary antibodies, including rabbit anti-p-p38 (1:1000, Cell Signaling Technology), rabbit anti-c-caspase-3 (1:1000, Cell Signaling Technology), rabbit anti-p38 (1:1000, Anbo), rabbit anti-caspase-3 (1:1000, Abcam), and  $\beta$ -actin (1:2000, Sigma). After washing, secondary antibodies were incubated for one hour at room temperature. The blots were processed and analyzed quantitatively using Image Lab-5.2.1 software (Bio-Rad).

**2.4. Brain Infarct Area and Infarct Volume Measurements.** The cerebral infarction area and volume were analyzed by using the 2,3,5-triphenyl tetrazolium chloride (TTC) staining method. At 24 h after ischemia and reperfusion, the animals were anesthetized and brain tissue was obtained. To detect the infarct area, the brains were sliced into 2 mm thick coronal sections and then incubated with TTC (Sigma-Aldrich) solution (2%) at 37°C for 10 min in the dark. The infarct area was calculated using the following formula: reduced area = [(contralateral – ipsilateral)/contralateral] 100%. IPP (Ver. 6.0) software was used for infarct volume analysis [11].

Each brain slice was photographed, and the bilateral areas were analyzed with IPP (Ver. 6.0) software. The reduced brain area of each brain slice, which was in the ipsilateral hemisphere compared with the contralateral side, was calculated by the formula. To clarify the difference in brain size, the ratio of hemisphere area, which is the brain contralateral hemisphere, was determined. Infarct volume was

calculated as  $V = t \times (A_1 + A_2 + \dots + A_n) / 2 - t \times (A_1 + A_n) / 2 \text{ m}^3$ , where  $A_1$  to  $A_n$ : it presented each slice area from 1 to  $n \text{ mm}^2$ . The infarct volume was calculated by formula = (infarct volume  $\times$  contralateral volume) / ipsilateral volume. This method was modified from previous publications and is described below for references [11, 12].

**2.5. TUNEL Staining.** Apoptotic cells in the brain were detected by the TUNEL staining method. The brain was sectioned at  $16 \mu\text{m}$  thickness (Leica DM2500) and stained with a TUNEL assay kit (Roche) in a dark humidified chamber for 1 h at  $37^\circ\text{C}$ . After the TUNEL reaction mixture, it was to make a wash for 10 min three times using PBS buffer. Then, the sections were stained with diaminobenzidine (DAB) (Cell Signaling) substrate solution. Finally, it was viewed and analyzed. The positive apoptotic cells showed a brown stain within the cytoplasm. Concerning each experiment, nonspecific labeling was examined by omitting TdT. The cell numbers of TUNEL-positive neurons and total neurons were analyzed by counting six random areas of sections in the hippocampal CA1 layer. The sections were examined under a Leica fluorescence microscope (400x magnification). Neuronal damage was evaluated and calculated, and the percentage of TUNEL-positive neurons/the number of total neurons was utilized to quantify neuronal damage [13, 14].

## 2.6. Behavioral Testing Procedures

**2.6.1. Neurological Severity Score (NSS).** Double-blind trials, control groups, and experimental groups were not identified by the researchers, only after all data were recorded. The experimental protocol was previously described [15–17]. Motor coordination was evaluated by using a modified NSS that contains balance, motor, and reflexes. A scale of 0–18 was used to assess neurological function. One point was classified as an animal not performing the behavioral test or lack of a reflex. A higher score may indicate more severe injury.

**2.6.2. Neurological Deficit Score (NDS).** After the animal wakes up from the model experiment of global cerebral ischemia/reperfusion, neurological deficit score experiments were performed according to the behavioral symptoms [18, 19]. Mouse in experiments group one by one score and total scores were assessed using the single-blind method, namely, the total mouse brain stroke index. Briefly, the animals were placed on a smooth tabletop, behavioral scoring by the presence or absence of the following symptoms: vertical hair, to reduce or slow motion, enhanced alertness of the ear and ptosis of the eyelids were evaluated assigning a score (0 or 1). Subsequently, Alice head bent or bent, closure of eyes, circle the body, hind legs open and convulsion or clonic were evaluated assigning a score (0 or 3). Limb weakness was evaluated assigning a score (0 or 6). Total points range from 0 to 25 score, total score  $< 10$  indicates mild ischemia, and total score  $\geq 10$  indicates severe ischemia.

**2.6.3. The Observation of Neurobehavioral Function.** All animals were trained in walking 3 days before the operation and 1 hour before ischemia. The basal values were measured and measured continuously after ischemia times. Walking test:

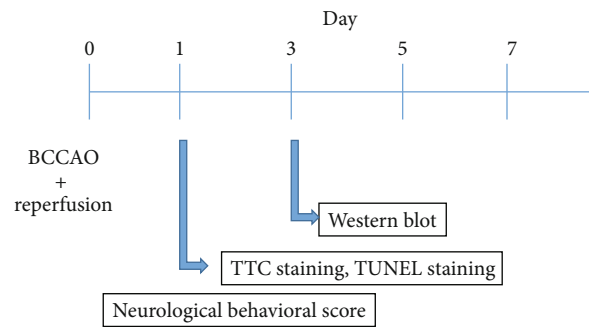


FIGURE 1: Basic depiction of the experimental design. Global cerebral ischemia/reperfusion treatment at the age of about eight-week-old male mice. In this study, three experimental groups were analyzed: sham group, WT & I/R group, and  $p38^{KI/+}$  & I/R group. TTC staining, western blot analysis, TUNEL staining, and neurological score were performed and analyzed.

the mouse was observed in the width 1.0 cm and length 30 cm of wood in the walking situation; record the passage of time required [20] (simulated and improved protocol from Research Center for Craniocerebral Injury, University of Virginia, United States).

**2.7. Statistical Analysis.** All data are presented as the mean  $\pm$  standard deviation (SD). Statistical comparisons between two groups were performed using the independent two-sample  $t$ -test. The data from multiple groups were analyzed using one-way analysis of variance (ANOVA) or Bonferroni's multiple comparison test. A value of  $p < 0.05$  was considered statistically significant. Statistical analysis was performed with SPSS 17.0 (SPSS Inc.).

## 3. Results

**3.1. Cerebral IIR Caused Activation of p38 MAPK, "Core" Infarction, and Ischemic Penumbra.** Basic depiction of the experimental design is in Figure 1. In the experiment, there was some time point (1, 3, 5, and 7 d) identified in C57BL/6 after BCCAO and reperfusion. We found that the expressions of p38 phosphorylation and p38 protein were time-dependent. The level of p-p38 protein in the hippocampus in I/R mice was initially increased and decreased later after cerebral ischemia/reperfusion at 1 d, 3 d, 5 d, and 7 d in the WT & I/R group (Figures 2(a) and 2(b)), and the level of p-p38 protein was significantly higher than in the sham group after 3 days of BCCAO and reperfusion (Figures 2(c) and 2(d),  $p < 0.05$ ).

TTC staining is one of the indicators of cerebral ischemic infarction; TTC staining after cerebral ischemia/reperfusion showed more severe injury and forms "core" infarction and ischemic penumbra at 1 d than 3 d and 5 d infarction (Figure 3(c),  $p < 0.05$ ). These results demonstrate that ischemia/reperfusion caused activation of p38 MAPK, "core" infarction, and ischemic penumbra.

In this paper, we found that p38 MAPK is activated and forms "core" infarction and ischemic penumbra in I/R mice, and these results suggest that BCCAO and reperfusion induce neurological function injury.

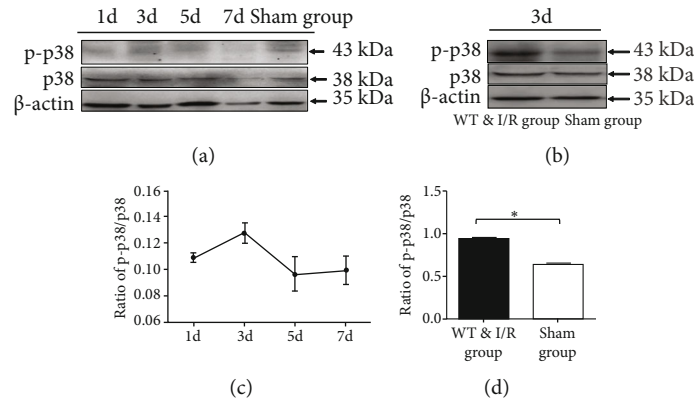


FIGURE 2: The expressions of p38 phosphorylation and p38 protein are time-dependent. (a) Original blots show the expression of p-p38 in the hippocampus after cerebral ischemia/reperfusion at 1 d, 3 d, 5 d, and 7 d in the WT & I/R group, compared to the sham group. (b) The bar graph shows the quantification of p-p38 MAPK phosphorylation in the hippocampus at 1 d, 3 d, 5 d, and 7 d after cerebral ischemia/reperfusion. (c, d) The expression of p-p38 in the hippocampus at 3 days after cerebral ischemia/reperfusion in WT & I/R and sham groups ( $n = 4$ ,  $*p < 0.05$ , sham vs. I/R group). Data are represented as mean with SD. The comparisons were performed by Student's  $t$ -test.  $*p < 0.05$  versus the control group. Values are mean  $\pm$  SD.  $*p < 0.05$  by one-way ANOVA.

**3.2. p38 MAPK Inhibition Rescues Hippocampal Cell Apoptosis in  $p38^{KI/+}$  & I/R Mice.** In this paper, we hypothesized that p38 MAPK inhibition rescues hippocampal cell apoptosis, p38 MAPK, and caspase-3 detected by western blotting in WT mice and  $p38^{KI/+}$  & I/R mice after IRI. To confirm that phosphorylation of p38 MAPK critically during ischemia reflected activation, we examined the phosphorylation level of p38 MAPK in the hippocampus. The WT &  $p38^{KI/+}$  mice were anaesthetized and subjected to I/R injury mouse model. p38 MAPK and caspase-3 were detected by western blotting. The level of p38 MAPK phosphorylation was analyzed in the hippocampal lysates at 1-day postsurgery. We observed that p-p38 MAPK in the hippocampal lysates was significantly increased in the WT & I/R mice (Figure 4,  $p < 0.05$ ). In contrast, compared with WT & I/R mice, the level of p-p38 was significantly decreased in  $p38^{KI/+}$  & I/R mice (Figure 4,  $p < 0.05$ ). The level of cleaved-caspase-3 relative to caspase-3 was a remarkable reduction in the  $p38^{KI/+}$  & I/R group, compared with that in the WT & I/R mouse group (Figure 5,  $p < 0.05$ ). TUNEL staining is a common method for detecting DNA fragmentation and widely used to study apoptosis in tissues. The TUNEL-positive cells (%) were increased in the ischemic hippocampal CA1 region in WT & I/R mice (Figures 6(a) and 6(b)). However, the TUNEL-positive cells (%) were less in the ischemic hippocampal CA1 region in  $p38^{KI/+}$  & I/R (Figures 6(b) and 6(c)). Apoptotic index of TUNEL staining in hippocampal CA1 area in WT & I/R mice is significantly higher than that in  $p38^{KI/+}$  & I/R mice (Figure 6(d),  $p < 0.05$ ). These results showed that p38 MAPK inhibition rescues hippocampal cell apoptosis. p38 MAPK inhibition rescues hippocampal cell apoptosis and reduces ischemic penumbra in  $p38^{KI/+}$  & I/R mice.

In this paper, upregulation of the expression of phosphorylated p38 MAPK, the cleared of caspase-3 and TUNEL-positive cells, in the hippocampus subregion after reperfusion in WT & I/R mice, the level of phosphorylated p38 MAPK, and the cleared of caspase-3 and the TUNEL-

positive cells were markedly decreased after ischemia in  $p38^{KI/+}$  mice.

**3.3. p38 MAPK Inhibition Can Reduce Ischemic Penumbra and Improve the Neurological Behavioral Deficit.** In this study, we hypothesized that p38 MAPK inhibition reduces brain injury and improves neurological function after cerebral ischemia and reperfusion. TTC staining and neurological behavior were used to evaluate WT mice and  $p38^{KI/+}$  & I/R mice after IRI. TTC staining was used to evaluate the improvement of neurological deficits associated with reduced infarct size. In the  $p38^{KI/+}$  & I/R group, the TTC staining results showed cerebral ischemia “core” infarction and ischemic penumbra was reduced and ischemic infarction volume markedly decreased than in the WT & I/R group (Figure 7(d),  $p < 0.05$ ). These results showed that p38 MAPK endogenous inhibition improved neurological deficits.

Neurological severity scores (NSS) and neurological deficit scores (NDS scores) were used to determine motor coordination, balance, motion, and reflection. A series of neurological function scores were performed; it has consistently been found that behavioral function was improved in the  $p38^{KI/+}$  & I/R groups, compared to the WT & I/R group (Figures 8(a)–8(c),  $p < 0.05$ ). In this study, p38 MAPK inhibition has the potential to rescue and improve neurological function in a mouse model of I/R. These results demonstrated that p38 MAPK inhibition attenuated ischemic brain injury and improved neurological behavioral deficits.

## 4. Discussion

Ischemic cerebrovascular disease is one of the main neurodegenerative disorders and causes of death and disability. Reperfusion is currently the most effective way to restore blood supply to the ischemic part of the brain. However, cerebral ischemia-reperfusion is also very likely to cause injury to brain tissue, which is known as ischemia-reperfusion injury (IRI). IRI is a physiological and



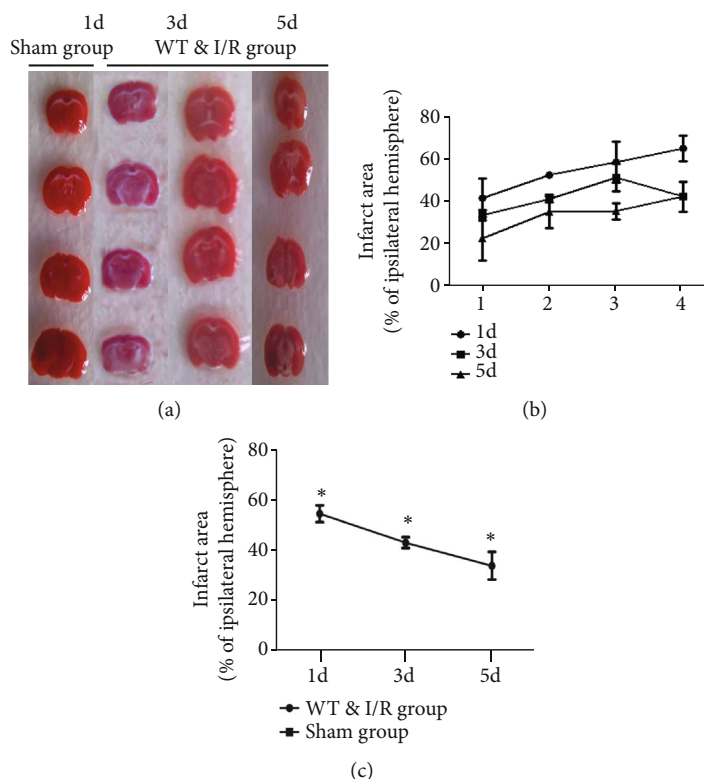


FIGURE 3: TTC staining was performed at 1 d, 3 d, and 5 d after cerebral ischemia/reperfusion. (a) TTC staining sections graph at 1 d, 3 d, and 5 d cerebral ischemia/reperfusion compared with the sham group. The white color indicates the infarct area. (b) The bar graph is a representation of the quantitative infarct area with TTC staining at 1 d, 3 d, and 5 d. (c) The bar graph represents quantitative infarct volume from the TTC staining at 1 d, 3 d, and 5 d cerebral ischemia-reperfusion, compared with the sham group,  $n = 3$  per group,  $*p < 0.05$ , sham vs. I/R group.  $*p < 0.05$  by one-way ANOVA.

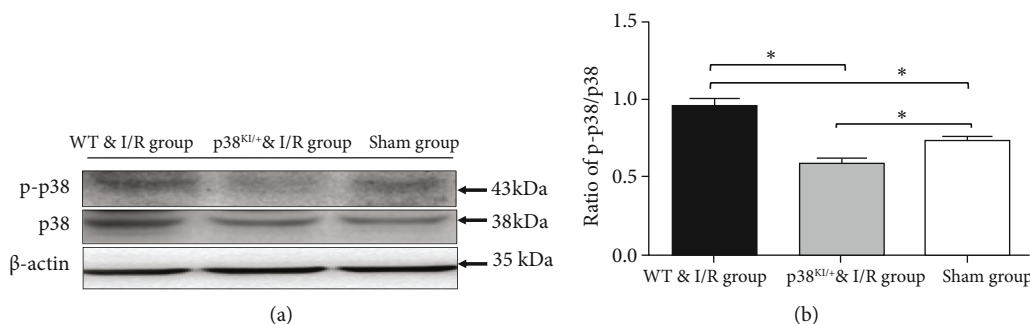


FIGURE 4: p38 MAPK knockdown reduced p38 MAPK activation in hippocampal CA1 pyramidal cells. (a) Representative images of western blotting in WT and  $p38^{KI/+}$  mice after BCCAO at 8 weeks of age. (b) Quantification of p-p38 (p38 MAPK phosphorylation) in WT mice in the sham group, the WT & I/R group, and the  $p38^{KI/+}$  & I/R group;  $n = 3$  mice per experimental group;  $*p < 0.05$ , sham group vs. I/R group;  $*p < 0.05$ ,  $p38^{KI/+}$  & I/R group vs. I/R group.  $*p < 0.05$  by one-way ANOVA.

pathological process involving multiple mechanisms. Global cerebral ischemia has contributed to the study of the chronic cerebral hypoperfusion effect on cognitive dysfunction and neurodegenerative processes [21–24]. The bilateral common carotid artery occlusion (BCCAO) modeling method can be used to study transient global ischemia [5]. Apoptosis is one of the major results of cerebral IRI and may be induced to generate oxygen free radicals, leading to the process of cell death [25, 26]. Some studies have demonstrated that it leads to a proper reduction in blood flow, causing the cell subtle morphological, biochemical, and behavioral changes and so

on [27–30]. BCCAO mice have been found to exhibit long-lasting functional deficits after validation behavioral tests, such as the elevated zero maze (EZM) and the open field test (OF) [31, 32].

The p38 pathway may play important roles in various stages of cerebral ischemia and is involved in some biological responses, such as cell proliferation and apoptosis [33–36]. In the experiment, we found that the expression of p38 phosphorylation and p38 protein was time-dependent. Some studies have shown that the activation of p38 MAPK in furtherance of neuronal death after brain ischemic [37, 38]. In

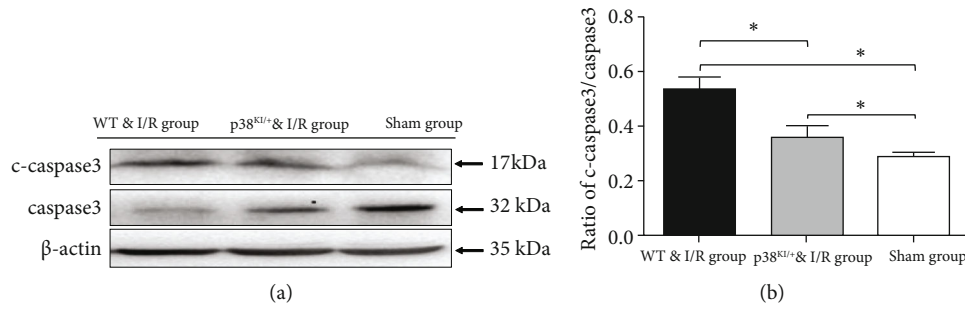


FIGURE 5: p38 MAPK knockdown reduced the expression of c-caspase-3 in hippocampus CA1 pyramidal cells. (a) Representative images of western blotting in WT and p38<sup>Kl/+</sup> mice after ischemia/reperfusion surgery at 9 weeks of age. (b) Quantification of c-caspase-3 activation expression (cleaved-caspase-3/caspase-3) in the hippocampus, mice in the sham group, the WT & I/R group, and the p38<sup>Kl/+</sup> & I/R group.  $n = 3$  per group; \* $p < 0.05$ , sham group vs. I/R group; \* $p < 0.05$ , p38<sup>Kl/+</sup> & I/R group vs. I/R group. \* $p < 0.05$  by one-way ANOVA.

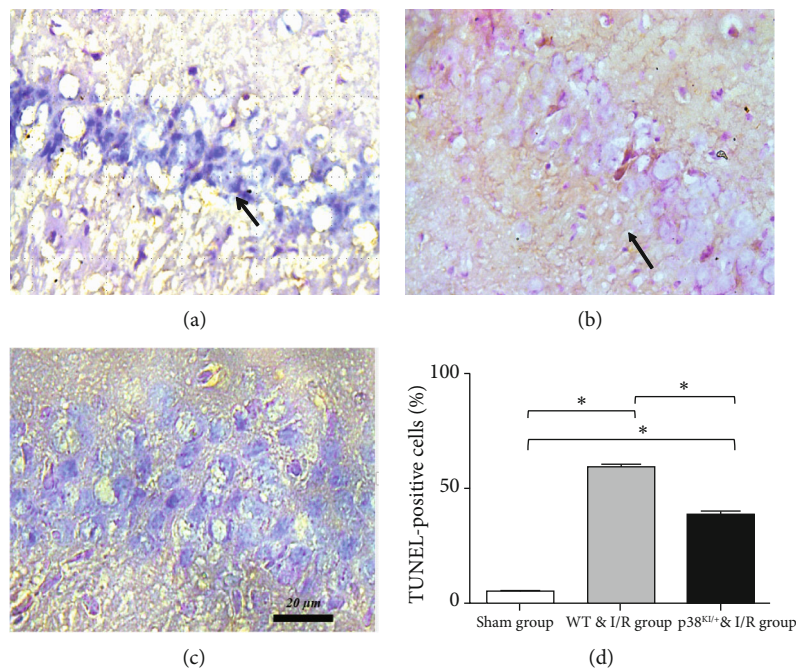


FIGURE 6: p38 MAPK knockdown rescues apoptosis and DNA damage after cerebral ischemia and reperfusion. (a) TUNEL staining photomicrographs at 3 days after cerebral ischemia/reperfusion in the WT & I/R group. (b) TUNEL staining photomicrographs at 3 d after cerebral ischemia and reperfusion in the p38<sup>Kl/+</sup> & I/R group. (c) TUNEL staining photomicrographs in the sham group by TUNEL staining. (d) Apoptotic TUNEL-positive cells (%) of TUNEL staining in hippocampal CA1; the p38<sup>Kl/+</sup> & I/R group was lower than the WT & I/R group, respectively ( $n = 3$  per group; \* $p < 0.05$ , sham group vs. I/R group; \* $p < 0.05$ , p38<sup>Kl/+</sup> & I/R vs. I/R group.). The slice thickness is 16  $\mu\text{m}$  under a  $\times 400$  microscope image (red brown indicates Klenow- or TUNEL-positive cells by black arrows; blue depicts nucleus; scale bars 20  $\mu\text{m}$ ). \* $p < 0.05$  by one-way ANOVA.

our study, we found that p38 MAPK is activated in the hippocampus of I/R mice. It has been demonstrated that activation of p38 MAPK could defend brain endothelial cells against apoptosis in stroke [39] and protect neurons from ischemic stimulation [40, 41]. In our study, we used the BCCAO modeling method and found that global brain ischemia induces sensory, motor, and neurological behavioral function injury and forms a “core” infarction.

In our study, we hypothesized that p38 MAPK inhibition rescues hippocampal cell apoptosis, p38 MAPK, and caspase-3 detected by western blotting in WT mice and p38<sup>Kl/+</sup> & I/R mice after IRI. We observed that p-p38 MAPK

in hippocampal lysates led to a significant increase in the I/R mice compared to WT mice. In contrast, there was a significant decrease in p38<sup>Kl/+</sup> & I/R mice in comparison to WT & I/R mice. In a previous study, p38 MAPK might regulate caspase-3 activation, and it was revealed that p38 MAPK can be directly phosphorylated, causing the inhibition of caspase-3 activity and leading to apoptosis via direct molecular interaction [42]. It has been demonstrated that caspase-3 activation ultimately leads to cell death [43]. We found that the protein level of cleaved-caspase-3 relative to caspase-3 was remarkably reduced in the p38<sup>Kl/+</sup> & I/R group compared with the WT & I/R mouse group. TUNEL

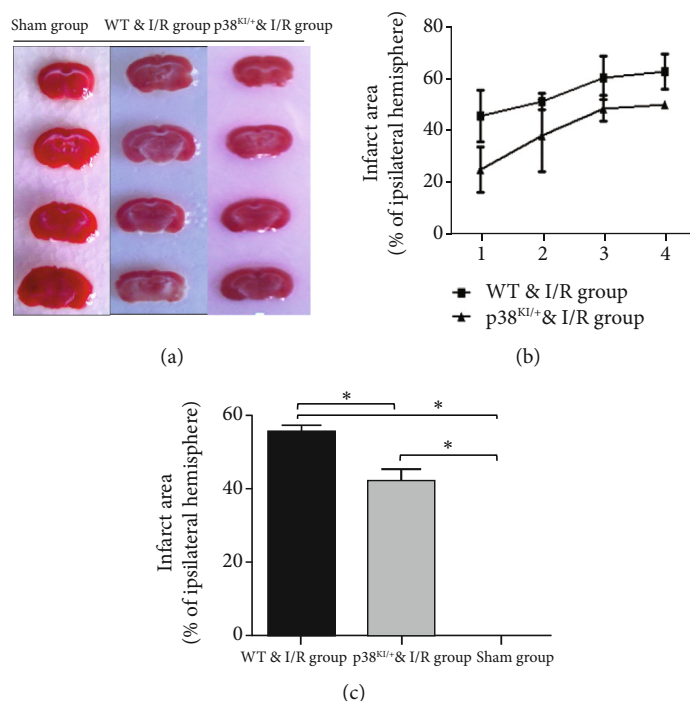


FIGURE 7: p38 MAPK knockdown rescues brain injury after cerebral ischemia and reperfusion. (a) TTC staining sections graph at 1 d cerebral ischemia-reperfusion in the sham group, the p38<sup>KI/+</sup> & I/R group, and the WT & I/R group. The white color of sections means the infarct area. (b) The bar graph indicates quantitative infarct area with the TTC staining at 1 d in the sham group, the p38<sup>KI/+</sup> & I/R group, and the WT & I/R group. (c) Quantitative infarct volume with the TTC staining at 1 d cerebral ischemia-reperfusion in the sham group, the p38<sup>KI/+</sup> & I/R group, and the WT & I/R group;  $n = 3$  per group;  $*p < 0.05$ , sham group vs. I/R group;  $*p < 0.05$ , p38<sup>KI/+</sup> & I/R group vs. I/R group.  $*p < 0.05$  by one-way ANOVA.

staining was utilized for the quantification of neuronal damage [13, 14]. In this study, the expression of phosphorylated p38 MAPK, the cleared of caspase-3, and the number of TUNEL-positive cells increased in the hippocampal subregion after reperfusion in WT & I/R mice, and the levels of phosphorylated p38 MAPK, the cleared of caspase-3, and the number of TUNEL-positive cells were markedly decreased in p38<sup>KI/+</sup> & I/R mice. These results showed that p38 MAPK endogenous inhibition rescues hippocampal cell apoptosis.

In this study, we hypothesized that p38 MAPK inhibits brain injury and improves neurological function after cerebral ischemia and reperfusion. TTC staining and neurological behavior were evaluated in WT mice and p38<sup>KI/+</sup> & I/R mice after IRI. In mice with BCCAO-induced brain ischemia-reperfusion damage, TTC staining was used to evaluate brain injury [44, 45]. In the p38<sup>KI/+</sup> & I/R groups, the TTC staining results showed cerebral ischemia “core” infarction and ischemic penumbra diminution, and the ischemic infarction volume was markedly decreased compared with that in the WT group after cerebral ischemia-reperfusion. NSS and NDS scores were used to determine motor coordination, balance, motion, and reflection function [18, 19]. Neurological scores were used to induce cerebral injury by the BCCAO method. The effect of OKLE (O. kilimandscharicum leaf extract) on motor coordination was evaluated using modified neurological severity scores (NSS) [45], which are a combination of balance, motor, and reflexes. A score of 0-15 was used to score neurological

function, and one score was awarded to animals for not performing the test or lack of a reflex. Thus, a higher score indicates more injury [46]. In the p38<sup>KI/+</sup> & I/R groups, a series of neurological function scores were calculated, and behavioral function was consistently improved compared with that in the WT & I/R group. These results demonstrate that p38 MAPK inhibition attenuated ischemic brain injury and improved neurological behavioral deficits. In our study, we found that cerebral ischemia “core” infarction, ischemic penumbra was diminished, ischemic infarction volume markedly decreased, and behavioral function was improved in the p38<sup>KI/+</sup> & I/R groups, compared to WT & I/R mice. These results suggest that p38 MAPK endogenous inhibition can reduce ischemic brain injury and improve neurological behavioral deficits.

Previous studies have confirmed the efficacy of p38 inhibitors by the downregulating of p38 MAPK, which is reported to have neuroprotective effects that can reduce the extent of cerebral ischemia, reduce the loss of neurons [37, 47, 48], and improve LV function [49]. However, the current study of the protective effects of this pathway in cerebral ischemia is unclear. In other studies, it has been reported that SB203580 was irrelevant to p38 MAP kinase activity [50]. It is noteworthy that the activation of p38 expression in large mammal animal models, for example, pigs and dogs, was not as pronounced as in rodents [51]. In our lab, we studied the inhibitory effect of phosphorylation of p38 MAPK with SB203580 and did not find

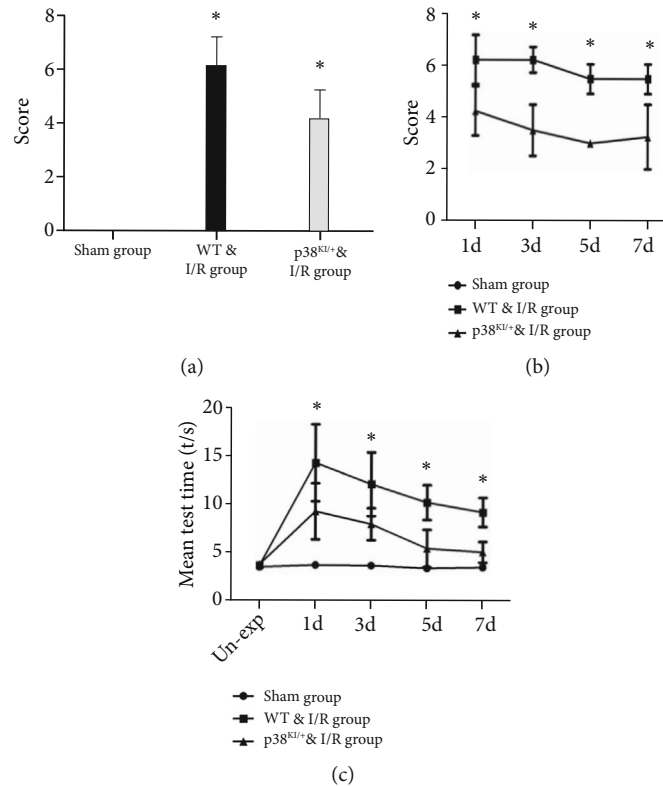


FIGURE 8: p38 MAPK knockdown improved neurobehavioral function. (a) Neurological severity score at 45 min after reperfusion in the mice of the p38<sup>KI/+</sup> & I/R group, the WT & I/R group, and the sham group;  $n = 3$  per group;  $*p < 0.05$ , p38<sup>KI/+</sup> & I/R vs. I/R group. (b) Neurological deficit score at 1 d, 3 d, 5 d, and 7 d after reperfusion in the mice of the p38<sup>KI/+</sup> & I/R group, the WT & I/R group, and the sham group; compared with the sham group,  $n = 3$  per group,  $*p < 0.05$ , p38<sup>KI/+</sup> & I/R vs. I/R group. (c) The Virginia score after reperfusion was 1 day, 3 days, 5 days, and 7 days in the p38<sup>KI/+</sup> & I/R group, the WT & I/R group, and the sham group; mean test time reflects neurobehavioral function.  $n = 3$  per group;  $*p < 0.05$ , sham group vs. I/R group;  $*p < 0.05$ , p38<sup>KI/+</sup> & I/R vs. I/R group. Un-exp represents to have no experiment.  $*p < 0.05$  by one-way ANOVA.

a more obvious reduction in WT mice (data not shown). Some inconsistencies may also be present in large animal models [52]. For these inconsistencies, there is a possible explanation, that is, they are different kinds of signal transduction pathways.

p39 is a regulator of Cdk5 (cycle-dependent kinase 5) in neurons; it exists in synapses, which can regulate neurite growth and may play a role in synaptogenesis [53–55]. Cdk5 controls multiple cellular events in postmitotic neurons and participates in neuronal diseases, including stroke and neurodegenerative diseases [56–59]. In this study, our research only focuses the effects of p38 MAPK in IRI in the brain. In the future, the role of p39 MAPK and other signal pathways in IRI should be studied. In our study, it was used to verify that the p38 MAPK pathway is involved in brain IRI and p38 MAPK endogenous inhibition had a neuroprotective effect by using a p38 heterozygous knockdown (p38<sup>KI/+</sup>) mouse model. Some studies have shown that p38 MAPK inhibition has neuroprotective effects by inhibiting the inflammatory response and autophagy in cerebral ischemia [60, 61]. Furthermore, we intend to further study the other neuroprotective mechanisms of p38 MAPK inhibition.

There are few reports regarding the p38 MAPK pathway with the direct effect in vivo in cerebral ischemia using trans-

genic animals. In this study, we demonstrate for the first time that the p38 MAPK pathway is involved in brain IRI based on p38 MAPK endogenous inhibition. Using a p38 heterozygous knockdown mouse (p38<sup>KI/+</sup>) model, our group found that p38 MAPK endogenous inhibition has the potential to rescue and improve neurological function in a mouse model of ischemia and reperfusion. In this study, it suggests novel aspects on the p38 MAPK signal pathway in global ischemia.

Currently, strategies for drug therapy and new treatments are also being studied. It is reported that *Biochanin A* can reduce brain I/R-induced injury by inhibiting p38 MAPK signal transduction, thereby serving as an effective neuroprotective agent [62]. In clinical treatment, tissue plasminogen activator (tPA) can effectively treat stroke only for a small number of stroke patients, and mechanical thrombectomy surgery and thrombolysis therapy are affected by diverse thrombus composition in stroke patients [63–65]. Gene therapy for stroke is a promising and new treatment method for patients who are ineffective in drug treatment and unable to undergo surgery. It has been shown that gene therapy can help self-repair vision after cerebral ischemia injury; it proves that gene therapy is an effective and promising treatment for cerebral ischemia injury in a mouse model [66].



In our study, p38 MAPK endogenous inhibition had a neuroprotective effect in a transgenic mouse model of IRI. Overall, p38 MAPK endogenous inhibition is a new therapeutic strategy and it could be indicated that p38 MAPK is a possible therapeutic target for the treatment of ischemic disease.

## 5. Conclusion

In conclusion, our data showed that p38 MAPK endogenous inhibition has the potential to rescue and improve neurological function in a mouse model of ischemia and reperfusion. This study suggested that p38 MAPK may be a possible therapeutic target for IRI. However, in the future, the role of p39 MAPK and other signal pathways in IRI should be studied.

## Data Availability

According to reasonable requirements, the supporting data of this study could be obtained from the corresponding author.

## Conflicts of Interest

The authors declare that they have no known competing financial interests or personal relationships that could have appeared to influence the work reported in this paper.

## Authors' Contributions

Kun Hou and Hai-Long Dai performed the experiments and wrote the paper; Kun Hou analyzed the data. Hai-Long Dai and Zhi-cheng Xiao conceived and designed the experiments.

## Acknowledgments

This work was supported by the National Natural Science Foundation of China (82060018, 81700438), the Yunnan Fundamental Research Projects (202101AS070043, 202102AA310003-7), the Health Talent Program of Yunnan (D-2019019, 2020-SW(guo)-01), and the Health Research Project of Yunnan (2017NS333, 2018NS205).

## Supplementary Materials

Information table concerning compounds, antibody sources, and figures of the number of animals used and the mortality rate after I/R. (*Supplementary Materials*)

## References

- [1] Z. Guo, G. Cao, H. Yang et al., "A combination of four active compounds alleviates cerebral ischemia-reperfusion injury in correlation with inhibition of autophagy and modulation of AMPK/mTOR and JNK pathways," *Journal of Neuroscience Research*, vol. 92, no. 10, pp. 1295–1306, 2015.
- [2] A. D. Lopez, C. D. Mathers, M. Ezzati, D. T. Jamison, and C. J. Murray, "Global and regional burden of disease and risk factors, 2001: systematic analysis of population health data," *The Lancet*, vol. 367, no. 9524, pp. 1747–1757, 2006.
- [3] P. H. Chan, "Role of oxidants in ischemic brain damage," *Stroke*, vol. 27, no. 6, pp. 1124–1129, 1996.
- [4] K. M. Noh, H. Yokota, T. Mashiko, P. E. Castillo, R. S. Zukin, and M. V. Bennett, "Blockade of calcium-permeable AMPA receptors protects hippocampal neurons against global ischemia-induced death," *Proceedings of the National Academy of Sciences of the United States of America*, vol. 102, no. 34, pp. 12230–12235, 2005.
- [5] G. Soria, R. Tudela, A. Márquez-Martín et al., "The ins and outs of the BCCAO model for chronic hypoperfusion: a multimodal and longitudinal MRI approach," *PLoS One*, vol. 8, no. 9, pp. 1–18, 2013.
- [6] T. S. Klarić, E. J. Jaehne, S. A. Koblar, B. T. Baune, and M. D. Lewis, "Alterations in anxiety and social behaviour in Npas4 deficient mice following photochemically-induced focal cortical stroke," *Behavioural Brain Research*, vol. 316, pp. 29–37, 2017.
- [7] R. Desilva, J. Dunning, A. Trull, and A. Vuylsteke, "A review of ischaemia-reperfusion injury in the cardiorespiratory system," *Annals of Cardiac Anaesthesia*, vol. 6, pp. 126–131, 2003.
- [8] H. L. Dai, W. Y. Hu, L. H. Jiang, L. Li, X. F. Gaung, and Z. C. Xiao, "p38 MAPK inhibition improves synaptic plasticity and memory in angiotensin II-dependent hypertensive mice," *Scientific Reports*, vol. 6, no. 27600, pp. 1–10, 2016.
- [9] H. Norio, W. Hiroshi, A. Nobuhide, M. Kurasawa, J. Itoh, and Y. Tanaka, "Cerebral ischemia model with conscious mice: Involvement of NMDA receptor activation and derangement of learning and memory ability," *Journal of Pharmacological Methods*, vol. 23, no. 4, pp. 311–327, 1990.
- [10] K. S. Bora, S. Arora, and R. Shri, "Role of *Ocimum basilicum* L. in prevention of ischemia and reperfusion-induced cerebral damage, and motor dysfunctions in mice brain," *Journal of Ethnopharmacology*, vol. 137, no. 3, pp. 1360–1365, 2011.
- [11] X. Zhang, P. K. Yeung, G. M. McAlonan, S. S. Chung, and S. K. Chung, "Transgenic mice over-expressing endothelial endothelin-1 show cognitive deficit with blood-brain barrier breakdown after transient ischemia with long-term reperfusion," *Neurobiology of Learning and Memory*, vol. 101, pp. 46–54, 2013.
- [12] G. Pentón-Rol, J. Marín-Prida, G. Pardo-Andreu et al., "C-Phycocyanin is neuroprotective against global cerebral ischemia/reperfusion injury in gerbils," *Brain Research Bulletin*, vol. 86, no. 1-2, pp. 42–52, 2011.
- [13] K. Chu, B. Yin, J. Wang et al., "Inhibition of P2X7 receptor ameliorates transient global cerebral ischemia/reperfusion injury via modulating inflammatory responses in the rat hippocampus," *Journal of Neuroinflammation*, vol. 9, no. 1, pp. 1–10, 2012.
- [14] T. Sugawara, M. Fujimura, Y. Moritafujimura, M. Kawase, and P. H. Chan, "Mitochondrial release of cytochrome c corresponds to the selective vulnerability of hippocampal CA1 neurons in rats after transient global cerebral ischemia," *Journal of Neuroscience*, vol. 19, no. 22, pp. RC39–RC36, 1999.
- [15] J. Chen, Y. Li, L. Wang et al., "Therapeutic benefit of intravenous administration of bone marrow stromal cells after cerebral ischemia in rats," *Stroke*, vol. 32, no. 4, pp. 1005–1011, 2001.
- [16] G. A. Rosenberg, S. Mun-Bryce, M. Wesley, and M. Kornfeld, "Collagenase-induced intracerebral hemorrhage in rats," *Stroke*, vol. 21, no. 5, pp. 801–807, 1990.

- [17] Z. H. Liu, N. Y. Chen, P. H. Tu et al., "DHA attenuates cerebral edema following traumatic brain injury via the reduction in blood-brain barrier permeability," *International Journal of Molecular Sciences*, vol. 21, no. 6291, pp. 1–18, 2020.
- [18] R. G. Geocadin, R. Ghodadra, T. Kimura et al., "A novel quantitative EEG injury measure of global cerebral ischemia," *Clinical Neurophysiology*, vol. 111, no. 10, pp. 1779–1787, 2000.
- [19] W. R. Schäbitz, F. Li, K. Irie, B. W. Sandage Jr., K. W. Locke, and M. Fisher, "Synergistic effects of a combination of low-dose basic fibroblast growth factor and citicoline after temporary experimental focal ischemia," *Stroke*, vol. 30, no. 2, pp. 427–432, 1999.
- [20] B. K. Siesj, "Pathophysiology and treatment of focal cerebral ischemia," *Journal of Neurosurgery*, vol. 77, no. 3, pp. 337–354, 1992.
- [21] E. Farkas, P. G. M. Luiten, and F. Bari, "Permanent, bilateral common carotid artery occlusion in the rat: a model for chronic cerebral hypoperfusion-related neurodegenerative diseases," *Brain Research Reviews*, vol. 54, no. 1, pp. 162–180, 2007.
- [22] A. Peskine, C. Picq, and P. Pradat-Diehl, "Cerebral anoxia and disability," *Brain Injury*, vol. 18, no. 12, pp. 1243–1254, 2004.
- [23] H. Shakil and S. Saleem, "Genetic deletion of prostacyclin IP receptor exacerbates transient global cerebral ischemia in aging mice," *Brain Sciences*, vol. 3, no. 4, pp. 1095–1108, 2013.
- [24] J. Yager and A. E. Andersen, "Anorexia nervosa," *New England Journal of Medicine*, vol. 353, no. 14, pp. 1481–1488, 2005.
- [25] M. P. Mattson, W. Duan, W. A. Pedersen, and C. Culmsee, "Neurodegenerative disorders and ischemic brain diseases," *Apoptosis*, vol. 6, no. 1/2, pp. 69–81, 2001.
- [26] J. L. Zweier and M. A. H. Talukder, "The role of oxidants and free radicals in reperfusion injury," *Cardiovascular Research*, vol. 70, no. 2, pp. 181–190, 2006.
- [27] G. Kalesnykas, T. Tuulos, H. Uusitalo, and J. Jolkkonen, "Neurodegeneration and cellular stress in the retina and optic nerve in rat cerebral ischemia and hypoperfusion models," *Neuroscience*, vol. 155, no. 3, pp. 937–947, 2008.
- [28] L. Mester, A. Szabo, T. Atlasz et al., "Protection against chronic hypoperfusion-induced retinal neurodegeneration by PARP inhibition via activation of PI-3-kinase Akt pathway and suppression of JNK and p38 MAP kinases," *Neurotoxicity Research*, vol. 16, no. 1, pp. 68–76, 2009.
- [29] N. N. Osborne, R. J. Casson, J. P. M. Wood, G. Chidlow, M. Graham, and J. Melena, "Retinal ischemia: mechanisms of damage and potential therapeutic strategies," *Progress in Retinal and Eye Research*, vol. 23, no. 1, pp. 91–147, 2004.
- [30] D. Werling, D. Reglodi, W. A. Banks et al., "Ocular delivery of PACAP1-27 protects the retina from ischemic damage in rodents," *Investigative Ophthalmology and Visual Science*, vol. 57, no. 15, pp. 6683–6691, 2016.
- [31] M. A. Mori, E. Meyer, L. M. Soares, H. Milani, F. S. Guimarães, and R. de Oliveira, "Cannabidiol reduces neuroinflammation and promotes neuroplasticity and functional recovery after brain ischemia," *Progress in Neuro-Psychopharmacology and Biological Psychiatry*, vol. 75, pp. 94–105, 2017.
- [32] L. M. Soares, J. De Vry, H. W. M. Steinbusch, H. Milani, J. Prickaerts, and R. M. Weffort de Oliveira, "Rolipram improves cognition, reduces anxiety- and despair-like behaviors and impacts hippocampal neuroplasticity after transient global cerebral ischemia," *Neuroscience*, vol. 326, pp. 69–83, 2016.
- [33] R. Korhonen, T. Hömmö, T. Keränen et al., "Attenuation of TNF production and experimentally induced inflammation by PDE4 inhibitor rolipram is mediated by MAPK phosphatase-1," *British Journal of Pharmacology*, vol. 169, no. 7, pp. 1525–1536, 2013.
- [34] R. K. Pathak, G. Taj, D. Pandey, S. Arora, and A. Kumar, "Modeling of the MAPK machinery activation in response to various abiotic and biotic stresses in plants by a system biology approach," *Bioinformatics*, vol. 9, no. 9, pp. 443–449, 2013.
- [35] N. Kato, M. Matsumoto, M. Kogawa et al., "Critical role of p38 MAPK for regeneration of the sciatic nerve following crush injury in vivo," *Journal of Neuroinflammation*, vol. 10, no. 1, pp. 1–13, 2013.
- [36] T. Zarubin and J. Han, "Activation and signaling of the p38 MAP kinase pathway," *Cell Research*, vol. 15, no. 1, pp. 11–18, 2005.
- [37] F. C. Barone, E. A. Irving, A. M. Ray et al., "Inhibition of p38 mitogen-activated protein kinase provides neuroprotection in cerebral focal ischemia," *Medicinal Research Reviews*, vol. 21, no. 2, pp. 129–145, 2001.
- [38] D. C. Wu, W. Ye, X. M. Che, and G. Y. Yang, "Activation of mitogen-activated protein kinases after permanent cerebral artery occlusion in mouse brain," *Journal of Cerebral Blood Flow and Metabolism*, vol. 20, no. 9, pp. 1320–1330, 2000.
- [39] W. Pfeilschifter, B. Czech, B. P. Hoffmann et al., "Pyrrolidine dithiocarbamate activates p38 MAPK and protects brain endothelial cells from apoptosis: a mechanism for the protective effect in stroke," *Neurochemical Research*, vol. 35, no. 9, pp. 1391–1401, 2010.
- [40] F. Lennmyr, A. Ericsson, P. Gerwins, H. Ahlström, and A. Terént, "Increased brain injury and vascular leakage after pretreatment with p38-inhibitor SB203580 in transient ischemia," *Acta Neurologica Scandinavica*, vol. 108, no. 5, pp. 339–345, 2003.
- [41] M. Nishimura, T. Sugino, K. Nozaki et al., "Activation of p38 kinase in the gerbil hippocampus showing ischemic tolerance," *Journal of Cerebral Blood Flow & Metabolism*, vol. 23, no. 9, pp. 1052–1059, 2003.
- [42] M. Alvarado-Kristensson, F. Melander, K. Leandersson, L. Rönstrand, C. Wernstedt, and T. Andersson, "p38-MAPK signals survival by phosphorylation of caspase-8 and caspase-3 in human neutrophils," *Journal of Experimental Medicine*, vol. 199, no. 4, pp. 449–458, 2004.
- [43] E. A. Slee, C. Adrain, and S. J. Martin, "Executioner caspase-3, -6, and -7 perform distinct, non-redundant roles during the demolition phase of apoptosis," *Journal of Biological Chemistry*, vol. 276, no. 10, pp. 7320–7326, 2001.
- [44] E. C. de Brito Toscano, B. C. Silva, E. C. G. Victoria et al., "Platelet-activating factor receptor (PAFR) plays a crucial role in experimental global cerebral ischemia and reperfusion," *Brain Research Bulletin*, vol. 124, pp. 55–61, 2016.
- [45] H. Kaur, A. Kumar, A. S. Jaggi, and N. Singh, "Pharmacologic investigations on the role of Sirt-1 in neuroprotective mechanism of postconditioning in mice," *Journal of Surgical Research*, vol. 197, no. 1, pp. 191–200, 2015.
- [46] V. Singh, P. Krishan, N. Singh, A. Kumar, and R. Shri, "Amelioration of ischemia-reperfusion induced functional and biochemical deficit in mice by *Ocimum kilimandscharicum* leaf extract," *Biomedicine & Pharmacotherapy*, vol. 85, pp. 556–563, 2017.

- [47] F. Gao, T. L. Yue, D. W. Shi et al., "p38 MAPK inhibition reduces myocardial reperfusion injury via inhibition of endothelial adhesion molecule expression and blockade of PMN accumulation," *Cardiovascular Research*, vol. 53, no. 2, pp. 414–422, 2002.
- [48] T. Sugino, K. Nozaki, Y. Takagi et al., "Activation of mitogen-activated protein kinases after transient forebrain ischemia in gerbil hippocampus," *Journal of Neuroscience*, vol. 20, no. 12, pp. 4506–4514, 2000.
- [49] F. See, W. Thomas, K. Way et al., "p38 mitogen-activated protein kinase inhibition improves cardiac function and attenuates left ventricular remodeling following myocardial infarction in the rat," *Journal of the American College of Cardiology*, vol. 44, no. 8, pp. 1679–1689, 2004.
- [50] F. V. Lali, A. E. Hunt, S. J. Turner, and B. M. Foxwell, "The pyridinyl imidazole inhibitor SB203580 blocks phosphoinositide-dependent protein kinase activity, protein kinase B phosphorylation, and retinoblastoma hyperphosphorylation in interleukin-2-stimulated T cells independently of p38 mitogen-activated protein kinase," *Journal of Biological Chemistry*, vol. 275, no. 10, pp. 7395–7402, 2000.
- [51] R. A. Kaiser, J. M. Lyons, J. Y. Duffy et al., "Inhibition of p38 reduces myocardial infarction injury in the mouse but not pig after ischemia-reperfusion," *Ajp Heart & Circulatory Physiology*, vol. 289, no. 6, pp. 2747–2751, 2005.
- [52] S. Kumphune, S. Chattipakorn, and N. Chattipakorn, "Role of p38 inhibition in cardiac ischemia/reperfusion injury," *European Journal of Clinical Pharmacology*, vol. 68, no. 5, pp. 513–524, 2012.
- [53] D. Tang, J. Yeung, K. Y. Lee et al., "An isoform of the neuronal cyclin-dependent kinase 5 (Cdk5) activator," *The Journal of Biological Chemistry*, vol. 270, no. 45, pp. 26897–26903, 1995.
- [54] W. Xiong, R. Pestell, and M. R. Rosner, "Role of cyclins in neuronal differentiation of immortalized hippocampal cells," *Molecular and Cellular Biology*, vol. 17, no. 11, pp. 6585–6597, 1997.
- [55] S. Humbert, L. M. Lanier, and L. H. Tsai, "Synaptic localization of p39, a neuronal activator of cdk5," *Neuroreport*, vol. 11, no. 10, pp. 2213–2216, 2000.
- [56] Z. H. Cheung and N. Y. Ip, "Cdk5: a multifaceted kinase in neurodegenerative diseases," *Trends in Cell Biology*, vol. 22, no. 3, pp. 169–175, 2012.
- [57] S. Jessberger, F. H. Gage, A. J. Eisch, and D. C. Lagace, "Making a neuron: cdk5 in embryonic and adult neurogenesis," *Trends in Neurosciences*, vol. 32, no. 11, pp. 575–582, 2009.
- [58] X. Tan, Y. Chen, J. Li et al., "The inhibition of Cdk5 activity after hypoxia/ischemia injury reduces infarct size and promotes functional recovery in neonatal rats," *Neuroscience*, vol. 290, pp. 552–560, 2015.
- [59] A. S. Wong, R. H. Lee, A. Y. Cheung et al., "Cdk5-mediated phosphorylation of endophilin B1 is required for induced autophagy in models of Parkinson's disease," *Nature Cell Biology*, vol. 13, no. 5, pp. 568–579, 2011.
- [60] W. Wang, L. Tang, Y. Li, and Y. Wang, "Biochanin A protects against focal cerebral ischemia/reperfusion in rats via inhibition of p38-mediated inflammatory responses," *Journal of the Neurological Sciences*, vol. 348, no. 1–2, pp. 121–125, 2015.
- [61] L. Zhang, W. X. Niu, Z. J. He et al., "Autophagy suppression by exercise pretreatment and p38 inhibition is neuroprotective in cerebral ischemia," *Brain Research*, vol. 1587, pp. 127–132, 2014.
- [62] M. M. Guo, S. B. Qu, H. L. Lu et al., "Biochanin A alleviates cerebral ischemia/reperfusion injury by suppressing endoplasmic reticulum stress-induced apoptosis and p38MAPK signaling pathway in vivo and in vitro," *Frontiers in Endocrinology*, vol. 12, no. 646720, pp. 1–11, 2021.
- [63] G. A. Donnan, S. M. Davis, M. W. Parsons, H. Ma, H. M. Dewey, and D. W. Howells, "How to make better use of thrombolytic therapy in acute ischemic stroke," *Nature Reviews Neurology*, vol. 7, no. 7, pp. 400–409, 2011.
- [64] T. Shichita, T. Ago, M. Kamouchi, T. Kitazono, A. Yoshimura, and H. Ooboshi, "Novel therapeutic strategies targeting innate immune responses and early inflammation after stroke," *Journal of Neurochemistry*, vol. 123, no. s2, pp. 29–38, 2012.
- [65] M. Abbasi, J. Arturo Larco, M. O. Mereuta et al., "Diverse thrombus composition in thrombectomy stroke patients with longer time to recanalization," *Thrombosis Research*, vol. 209, pp. 99–104, 2022.
- [66] Y. Tang, Q. Wu, M. Gao et al., "Restoration of visual function and cortical connectivity after ischemic injury through neuroD1-mediated gene therapy," *Frontiers in Cell and Developmental Biology*, vol. 9, no. 720078, pp. 1–17, 2021.