

## Research Article

# The Effects of Acupuncture at Real or Sham Acupoints on the Intrinsic Brain Activity in Mild Cognitive Impairment Patients

Baohui Jia,<sup>1,2,3</sup> Zhishun Liu,<sup>1</sup> Baoquan Min,<sup>2</sup> Zhenchang Wang,<sup>4</sup>  
Aihong Zhou,<sup>2</sup> Yong Li,<sup>4</sup> Haifa Qiao,<sup>3,5</sup> and Jianping Jia<sup>2</sup>

<sup>1</sup>Department of Acupuncture, Guang'anmen Hospital, China Academy of Chinese Medical Sciences, Beijing 100053, China

<sup>2</sup>Department of Neurology, Xuanwu Hospital of Capital Medical University, Beijing 100053, China

<sup>3</sup>Department of Biomedical Sciences, Florida State University College of Medicine, Tallahassee, FL 32306, USA

<sup>4</sup>Department of Radiology, Tongren Hospital of Capital Medical University, Beijing 100730, China

<sup>5</sup>Institute of Acupuncture and Moxibustion, China Academy of Chinese Medical Sciences, Beijing 100700, China

Correspondence should be addressed to Haifa Qiao; [haifa.qiao@med.fsu.edu](mailto:haifa.qiao@med.fsu.edu) and Jianping Jia; [jiajp@vip.126.com](mailto:jiajp@vip.126.com)

Received 12 September 2014; Accepted 14 November 2014

Academic Editor: Gerhard Litscher

Copyright © 2015 Baohui Jia et al. This is an open access article distributed under the Creative Commons Attribution License, which permits unrestricted use, distribution, and reproduction in any medium, provided the original work is properly cited.

Accumulating neuroimaging studies in humans have shown that acupuncture can modulate a widely distributed brain network in mild cognitive impairment (MCI) and Alzheimer's disease (AD) patients. Acupuncture at different acupoints could exert different modulatory effects on the brain network. However, whether acupuncture at real or sham acupoints can produce different effects on the brain network in MCI or AD patients remains unclear. Using resting-state fMRI, we reported that acupuncture at Taixi (KI3) induced amplitude of low-frequency fluctuation (ALFF) change of different brain regions in MCI patients from those shown in the healthy controls. In MCI patients, acupuncture at KI3 increased or decreased ALFF in the different regions from those activated by acupuncture in the healthy controls. Acupuncture at the sham acupoint in MCI patients activated the different brain regions from those in healthy controls. Therefore, we concluded that acupuncture displays more significant effect on neuronal activities of the above brain regions in MCI patients than that in healthy controls. Acupuncture at KI3 exhibits different effects on the neuronal activities of the brain regions from acupuncture at sham acupoint, although the difference is only shown at several regions due to the close distance between the above points.

## 1. Introduction

Mild cognitive impairment (MCI) is defined as a slight impairment in cognitive function (typically memory) with otherwise normal function in the performance of activities of daily living. It is now widely accepted that MCI is a transitional phase between normal function and Alzheimer's disease (AD), during which cognitive impairment is progressing [1, 2]. Most recent findings suggest that sensitive neuroimaging and network analysis may play a special role in understanding the pathophysiological mechanism of MCI and AD. Several resting-state fMRI studies have investigated the neuronal integrity in the brain of the AD or MCI patients by different methods. Using resting functional magnetic resonance imaging (fMRI), Biswal et al. [3] were

the first to demonstrate that spontaneous low-frequency fluctuations (LFFs; <0.08 Hz) of the blood oxygen level dependent (BOLD) signal during rest were of physiological importance. It suggested that regional spontaneous BOLD fluctuations likely reflect spontaneous neuronal activity [3–5]. Recently, this technique has been used to investigate the intrinsic or spontaneous brain activity in subjects with AD or MCI [6–15].

Previous studies have identified that acupuncture, as a therapy of traditional Chinese medicine (TCM), remains promising to treat neurological diseases including chronic pain, drug addiction, stroke, and dementia [16–18]. Now neuroimaging, in particular fMRI, is a versatile tool which has been applied to investigate the mechanisms of acupuncture. Accumulating neuroimaging studies in humans have shown

that acupuncture can modulate a widely distributed brain network [19–29]. Acupuncture could activate the temporal lobe (such as hippocampus, insula), some regions of the parietal lobe, and cerebellum in AD patients [30]. These regions are consistent with impaired brain areas in AD patients, which are closely correlated with the cognitive function (memory, reason, language, executive, etc.). This study also provides the preliminary neurophysiological evidence for the potential effect of acupuncture on AD [31]. On the other hand, acupuncture at different acupoints could exert different modulatory effects on the brain network [20]. However, whether acupuncture at real or sham acupoints can produce different effects on the brain network in MCI or AD patients still remains elusive.

Here we used resting-state fMRI to investigate the effects of acupuncture at KI3 or sham acupoint which is 25 mm above Taixi (KI3) on brain regions in MCI patients. Our analyses established that acupuncture at KI3 or sham acupoint could produce effects on some brain regions which are components of default cognitive network in MCI patients, and the statistical difference was only exhibited in several regions.

## 2. Materials and Methods

**2.1. Participants.** Twenty-three right-handed subjects participated in this study. 8 MCI patients (2 males and 6 females, average age:  $74.1 \pm 7.8$  years) and 15 elder healthy controls (8 males and 7 females, mean age:  $73.7 \pm 7.3$  years) were recruited from Xuanwu Hospital affiliated to Capital Medical University, Beijing. All the patients received medical interview, physical examination, blood tests, brain magnetic resonance imaging (MRI), and neuropsychological assessment, including Mini-Mental State Examination (MMSE) [32], Alzheimer's Disease Assessment Scale-cognitive subscale (ADAS-cog) and clinical dementia rating (CDR) [33], modified Hachinski ischemic scale (HIS) [34], activity of daily living scales (ADL), and Hamilton depression scale (HDS), and met the following criteria: (a) impaired memory performance on a normalized objective verbal memory delayed-recall test; (b) normal or near-normal performance on global cognitive tests; (c) MMSE score  $>24$ ; (d) intact activities of daily living; (e) global rating of 0.5 on the CDR scale, with a score of at least 0.5 on the memory domain; and (f) absence of dementia. The controls were identified as healthy through a regular health examination, MMSE, a clinical memory scale (CMS), HDS, and MRI and met the following criteria: (a) no neurological or psychiatric disorders such as stroke, depression, and epilepsy; (b) no neurological deficiencies such as visual or hearing loss; (c) no abnormal findings such as infarction or focal lesion in conventional brain MR imaging; (d) no cognitive complaints; (e) MMSE score of 28 or higher; (f) CDR score of 0. Participants with contraindications for MRI such as pacemaker, cardiac defibrillator, implanted material with electric or magnetic system, vascular clips or mechanical heart valve, cochlear implant, or claustrophobia were excluded. In addition, patients with a history of stroke, trauma, psychiatric disorders, drug/alcohol

abuse, severe hypertension, diabetes, anemia, systematic diseases, and intellectual disability were also not included. Informed consent was obtained from each subject or his (her) guardian. This study was approved by the Medical Research Ethics Committee of Xuan Wu Hospital.

**2.2. Data Acquisition.** Data acquisition was performed on a GE 1.5-T Magnetom Sonata system using a standard head coil. Foam padding and headphones were used to limit head motion and reduce scanner noise. Structural images were acquired using a sagittal magnetization-prepared rapid gradient echo (MPRAGE) three-dimensional T1-weighted sequence (repetition time (TR) = 1970 ms, echo time (TE) = 3.9 ms, inversion time (TI) = 1100 ms, flip angle (FA) =  $20^\circ$ , and field of view (FOV) =  $220 \times 220$ ). Subjects were instructed to keep their body frozen and eyes closed but not think of anything and fall asleep in particular during rest fMRI scanning. Functional images were collected by using an echo-planar imaging (EPI) sequence sensitive to BOLD contrast (TR = 2000 ms, TE = 30 ms, FA =  $90^\circ$ , and FOV =  $220 \times 220$ ). Whole-brain volumes were acquired with 24 contiguous 5-mm thick transverse slices, with a 1 mm gap and in-plane resolution =  $64 \times 64$ , 180 volumes. Through a simple questionnaire after the scan, we knew that all the subjects were awake with their eyes closed during the fMRI scanning session.

**2.3. Data Preprocessing.** Image preprocessing was carried out using the Statistical Parametric Mapping (SPM5) package (<http://www.fil.ion.ucl.ac.uk/spm>). The first five volumes were discarded to allow for T1 equilibration effects and the adaptation of the subjects to the circumstances, and then all functional images were corrected for different intravolume acquisition times between slices using the sinc interpolation and for the intervolume geometrical displacement due to head movement using a six-parameter (rigid body) spatial transformation [35]. After the corrections, the images were normalized into the stereotaxic space [36] using an optimum 12-parameter affine transformation and nonlinear deformations [37] and then resampled to 3 mm isotropic voxels. Finally, all normalized data were further temporally band-pass-filtered (0.01–0.08 Hz) to reduce the effects of low-frequency drift and high-frequency physiological noises. One male healthy control (male) was excluded because of excessive movement ( $>2$  mm of translation or  $2^\circ$  of rotation in any direction).

The functional datasets of all patients and healthy controls were preprocessed using the following main steps. (a) Slice timing: the differences of slice acquisition times of each individual were corrected using slice timing. (b) Realignment: the temporal processed volumes of each subject were realigned to the first volume to remove the head motion. All participants had less than 3 mm of translation in  $x$ -,  $y$ -, or  $z$ -axis and  $3^\circ$  of rotation in each axis. (c) Spatial normalization: the realigned volumes were spatially standardized into the MNI (Montreal Neurological Institute) space by normalizing with the EPI template via their corresponding mean image. Then, all the normalized images were resliced by  $3.0 \times 3.0 \times 3.0$  mm<sup>3</sup>

TABLE 1: Characteristics of the MCI patients and normal controls.

Characteristics	MCI ( $n = 7$ )	Controls ( $n = 15$ )	$P$ value
Age (years)	$74.1 \pm 7.8$	$70.2 \pm 7.1$	0.571
Education (years)	$12.5 \pm 3.1$	$11.4 \pm 4.2$	0.787
MMSE	$27.0 \pm 2.3$	$29.2 \pm 1.3$	$P < 0.001$
ADAS-cog	$6.7 \pm 2.9$	$2.5 \pm 1.7$	$P < 0.001$

MMSE: Mini-Mental State Examination (max = 30); ADAS: Alzheimer's Disease Assessment Scale.

voxels. (d) Smoothing: Analysis of Functional Neuroimages (AFNI) software (<http://afni.nimh.nih.gov>) was used to filter linear drift. The normalized functional series were smoothed with a Gaussian kernel of 6 mm full width at half-maximum (FWHM).

**2.4. Acupuncture.** In this study, we selected KI3 which is one of the most frequently used acupoints for the treatment of impaired memory and locates in the depression between the tip of the medial malleolus and Achilles' tendon [38], as a real acupoint, and a point which is 25 mm directly above KI3 as a sham control. The acupuncture needles ( $0.25 \times 40$  mm, Suzhou Hwato Medical Instruments, China) were inserted bilaterally, vertically to a depth of about 20 mm and rotated right then left, at a frequency of 2 Hz for 60 s. During fMRI scanning, the needles were kept in the points.

**2.5. Statistical Analysis.** Using global assessment of random effect, the data of each group was linked and then analyzed statistically. One-sample  $t$ -test was used between resting state (baseline) and resting state with acupuncture at true or sham acupoints in each group. Two-sample  $t$ -test was performed between different groups ( $P < 0.01$  (multiple correction)). The connected voxels greater than 30 were considered to be activated brain regions. The mean activated image was transformed to Talairach axis and superimposed three-dimension Talairach template in AFNI software [36] for the final localization of the activated region.

### 3. Results

**3.1. Demographic and Neuropsychological Characteristics.** Demographic and neuropsychological characteristics were shown in Table 1. There were no significant differences between groups in gender, age, and years of education. ADS-cog score in MCI is significantly different compared with that in control, whereas no significant difference was found in MMSE score between groups.

**3.2. Amplitude of Low-Frequency Fluctuation (ALFF) Analysis within Group.** Firstly we performed one-sample  $t$ -test to explore the ALFF patterns within group on the individual ALFF maps for each group. As shown in Figure 1, visual inspection indicated that frontal, parietal, and temporal lobes exhibited the increased ALFF values which are parallel with the distribution of default brain networks within each group.

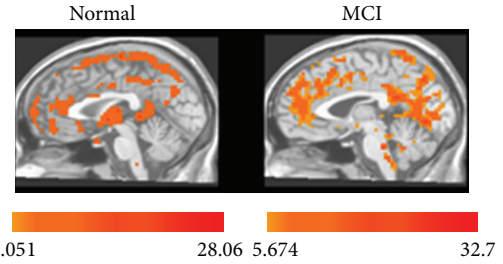


FIGURE 1: Mean ALFF maps in normal controls and MCI patients in the resting state. Color bar represents  $t$  value which increases with the darker color. The number under the color bar is the range of  $t$  value.

Narrowly, the increased regions include prefrontal lobe, posterior cingulate cortex, and precuneus. Figure 2 and Table 2 showed the two-sample unpaired  $t$ -test of ALFF between the MCI patients and the healthy controls. In the resting state, ALFF value in MCI group was decreased significantly in the left medial frontal gyrus and was significantly increased in the right inferior temporal gyrus and posterior cingulate, comparing to the healthy group.

**3.3. ALFF Analysis within Each Group in the Resting State Combined with Acupuncture at the Real Point.** Secondly, we explored the activated regions by acupuncture at real or sham acupoint in each group. As shown in Figures 3(a) and 3(b), regardless of acupuncture at real or sham acupoint, prefrontal, parietal, and temporal lobes displayed increased ALFF values within either MCI group or healthy controls in the resting state.

**3.4. ALFF Analysis between Groups in the Resting State Combined with Acupuncture at the Real or Sham Acupoint.** Subsequently we used two-sample unpaired  $t$ -test to analyze the difference between groups in the real or sham acupoint. As shown in Figure 4 and Table 3, in MCI patients, the regions showing decreased ALFF are postcentral gyrus, right medial frontal gyrus, cerebellar tonsil culmen, brainstem culmen, and left cuneus displaying increased ALFF in the resting state combined with acupuncture at the real point, comparing to the healthy controls. As shown in Figure 5 and Table 4, in MCI patients, acupuncture at sham acupoint caused tiny difference in the regions showing decreased ALFF between groups and only the left medial frontal gyrus and right superior frontal gyrus decreased ALFF value comparing to the healthy controls, suggesting that, in resting state, acupuncture at real and sham acupoints could activate different brain regions in both MCI and healthy groups.

**3.5. ALFF Analysis between Resting State with and without Acupuncture at the Real Acupoint in MCI Patients.** To explore the effect of acupuncture at the real acupoint on the ALFF in MCI patients, we performed the two-sample paired  $t$ -test to compare the ALFF between resting state without and with acupuncture. As shown in Figure 6 and Table 5, in MCI patients, acupuncture at KI3 in

TABLE 2: The brain areas that show significant difference in ALFF compared with the MCI patients with normal controls in the resting state.

Volume	Anatomical area	BA	H	<i>x</i>	<i>y</i>	<i>z</i>	Peak <i>t</i> value	Peak <i>P</i> value
3672	Medial frontal gyrus	BA6	L	4.5	22.5	68.5	-6.144	$5.0 \times 10^{-4}$
1539	Inferior temporal gyrus		R	-58.5	13.5	-21.5	5.1157	$2.6 \times 10^{-4}$
1242	Posterior cingulate		R	-22.5	58.5	20.5	5.0297	$2.9 \times 10^{-4}$

BA: Brodmann area; H: hemisphere; *x*: *x*-axis; *y*: *y*-axis; *z*: *z*-axis; L: left; and R: right.

TABLE 3: The brain areas that show significant difference in ALFF in MCI patients compared with normal controls in the resting state combined with acupuncture at KI3.

Volume	Anatomical area	BA	H	<i>x</i>	<i>y</i>	<i>z</i>	Peak <i>t</i> value	Peak <i>P</i> value
1107	Culmen		R	10.5	-40.5	-12.5	4.3581	$9.3 \times 10^{-4}$
972	Medial frontal gyrus anterior cingulate	10	R	10.5	37.5	-12.5	4.0723	$1.6 \times 10^{-3}$
918	Paracentral lobule		L	-4.5	-22.5	77.5	-5.436	$1.5 \times 10^{-4}$
891	Cerebellar tonsil Culmen		R	19.5	-34.5	-27.5	6.7392	$2.1 \times 10^{-5}$
675	Cuneus	23 18	L	-13.5	-73.5	8.5	4.7565	$4.7 \times 10^{-4}$

BA: Brodmann area; H: hemisphere; *x*: *x*-axis; *y*: *y*-axis; *z*: *z*-axis; L: left; and R: right.

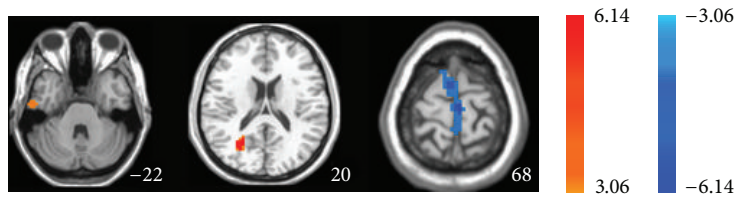


FIGURE 2: Unpaired *t*-test shows statistical difference map of ALFF between MCI patients and normal controls in the resting state.

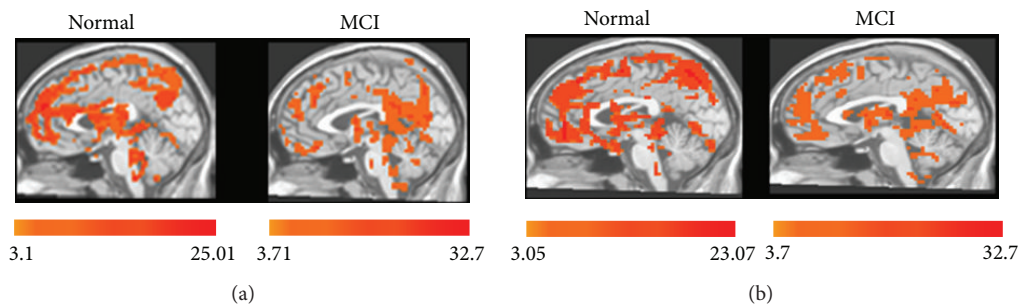


FIGURE 3: Mean ALFF maps in the resting state combined with acupuncture at real or sham acupoint in normal controls and MCI patients. (a) Mean ALFF maps within normal controls and MCI patients in the resting state combined with acupuncture at KI3. (b) Mean ALFF maps within normal controls and MCI patients in the resting state combined with acupuncture at sham acupoint.

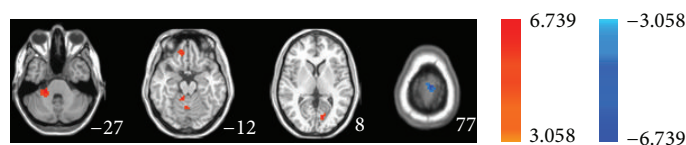


FIGURE 4: Unpaired *t*-test exhibits statistical difference map of ALFF between MCI patients and normal controls in resting state combined with acupuncture at KI3.



TABLE 4: The brain areas that show significant difference in ALFF in MCI patients compared with normal controls in the resting state combined with acupuncture at sham acupoint.

Volume	Anatomical area	BA	H	<i>x</i>	<i>y</i>	<i>z</i>	Peak <i>t</i> value	Peak <i>P</i> value
1053	Medial frontal gyrus	6	L	-4.5	-25.5	74.5	-4.1004	$1.5 \times 10^{-3}$
972	Superior frontal gyrus	6	R	1.5	-4.5	68.5	-4.1896	$1.3 \times 10^{-3}$
	Medial frontal gyrus							

BA: Brodmann area; H: hemisphere; *x*: *x*-axis; *y*: *y*-axis; *z*: *z*-axis; L: left; and R: right.

TABLE 5: The brain areas of ALFF signal change significantly in MCI patients with acupuncture at KI3 compared with no acupuncture in the resting state.

Volume	Anatomical area	BA	H	<i>x</i>	<i>y</i>	<i>z</i>	Peak <i>t</i> value	Peak <i>P</i> value
1134	Parahippocampal gyrus	28	L	-13.5	-13.5	-9.5	5.644	$1.3 \times 10^{-3}$
972	Middle frontal gyrus		R	28.5	7.5	32.5	6.9909	$4.2 \times 10^{-4}$
891	Cingulate gyrus		L	-25.5	1.5	29.5	7.117	$3.9 \times 10^{-4}$
702	Cingulate gyrus	6	L	-25.5	-10.5	38.5	7.0511	$4.1 \times 10^{-4}$
	Middle frontal gyrus							
621	Subthalamic nucleus (thalamus)		R	10.5	-16.5	-3.5	9.6493	$7.1 \times 10^{-5}$

BA: Brodmann area; H: hemisphere; *x*: *x*-axis; *y*: *y*-axis; *z*: *z*-axis; L: left; and R: right.

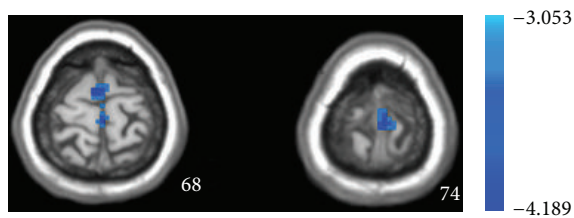


FIGURE 5: Unpaired *t*-test shows significant difference map of ALFF between MCI patients and normal controls in resting state combined with acupuncture at sham acupoint.

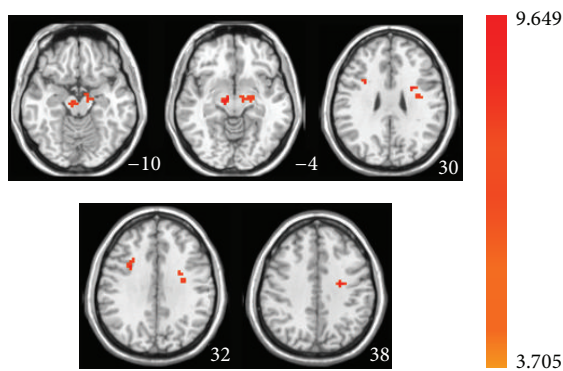


FIGURE 6: Two-sample paired *t*-test shows statistical difference map of ALFF in MCI patients between acupuncture at KI3 and no acupuncture in the resting state.

the resting state increased ALFF in the left parahippocampal gyrus, cingulate gyrus, middle frontal gyrus, right middle frontal gyrus, and subthalamic gyrus. In the healthy controls, acupuncture at the KI3 in the resting state increased ALFF in the right parahippocampal gyrus and reduced it in the right paracentral lobule and cuneus (see Figure S1 and

Table S1 of the Supplementary Material available online at <http://dx.doi.org/10.1155/2015/529675>).

3.6. *ALFF Analysis between Resting State with and without Acupuncture at the Sham Acupoint in MCI Patients.* Figure 7 and Table 6 showed the effect of acupuncture at the sham acupoint on the ALFF between resting states without and with acupuncture in MCI patients. Comparing to the resting state without acupuncture, acupuncture at the sham acupoint in the resting state enhanced ALFF in the left precentral gyrus, both right and left medial frontal gyrus, and decreased in the right superior temporal gyrus. In healthy controls, acupuncture at the sham acupoint in the resting state reduced the ALFF in the right cuneus, paracentral lobule but activated it in the right medial frontal gyrus, left anterior cingulate, and parahippocampal gyrus (Figure S2 and Table S2) comparing to the resting state without acupuncture. These data suggest that comparing to the resting state without acupuncture, acupuncture at the sham acupoint in MCI patients activated the different brain regions from those in healthy controls.

3.7. *ALFF Analysis between Acupuncture at the Real and the Sham Acupoints in the Resting State.* Here a question was raised: what is the difference between acupuncture at the real and the sham acupoints? To answer this question, we conducted a two-sample paired *t*-test. As shown in Figure 8 and Table 7, in MCI patients, acupuncture at the KI3 increased ALFF in the right superior temporal gyrus, cingulate gyrus and decreased it in the middle front gyrus comparing to acupuncture at the sham acupoint in the resting state. In healthy controls, acupuncture at the real acupoint only decreased the ALFF in the left anterior cingulate comparing to acupuncture at the sham acupoint in the resting state (Figure S3 and Table S3). These data suggest that in the resting state acupuncture at KI3 can produce different

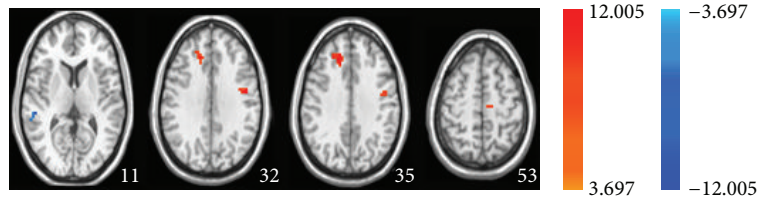


FIGURE 7: Two-sample paired  $t$ -test displays statistical difference map of ALFF in MCI patients between acupuncture at sham point and no acupuncture in the resting state.

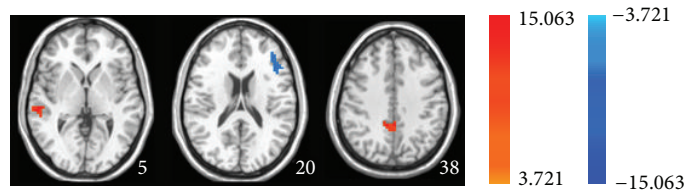


FIGURE 8: Two-sample paired  $t$ -test exhibits statistical difference map of ALFF in MCI patients between acupuncture at KI3 acupuncture and acupuncture at sham acupoint in the resting state.

effects on certain brain regions from acupuncture at the sham acupoint, especially in MCI patients.

#### 4. Discussion

In the current study, we performed fMRI to detect the effects of acupuncture at KI3 and the sham acupoints on the resting-state brain activity in MCI patients and healthy controls and discovered that during the resting state brain activities in MCI patients were different from those of healthy subjects. In resting state combined with acupuncture, although acupuncture at KI3 or sham acupoint could not induce significant ALFF value change within either MCI group or healthy control, acupuncture at the real acupoint induced ALFF change of different brain regions in MCI patients from those shown in the healthy controls; acupuncture at sham acupoint also caused difference in MCI patients comparing to the healthy controls, suggesting that, in resting state, acupuncture at KI3 and sham acupoints could activate different brain regions in both MCI and healthy groups. We also found that, in MCI patients, acupuncture at KI3 in the resting state increased or decreased ALFF in the different regions from those activated by acupuncture in the healthy controls. In resting state, acupuncture at the sham acupoint in MCI patients activated the different brain regions from those in healthy controls. Acupuncture at the KI3 can produce different effects on a few of brain regions in the resting state from acupuncture at the sham acupoint, especially in MCI patients.

The frontal and temporal regions were considered as important components of human default-mode networks [28–30] and have been shown to exhibit AD- and MCI-related structural and functional abnormalities [29]. By measuring the amplitude of the spontaneous activities (ALFF), several researchers have shown altered baseline brain activity in children with attention deficit hyperactivity disorder [39] and trauma survivors shortly after traumatic events [40]. Two

recent resting fMRI studies also utilized ALFF to investigate the brain's spontaneous activity under eyes-open and eyes-closed conditions and found that the activities within the visual cortex and default-mode regions were significantly different between the two conditions [41, 42]. These recent studies indicate that the ALFF is physiologically meaningful for measuring intrinsic or spontaneous neuronal activity of the brain. In the present study, we found that in the resting state the ALFF of medial frontal gyrus decreased, but inferior temporal gyrus and posterior cingulate increased, suggesting that the default model network was changed in MCI patients. The increase in inferior temporal gyrus is consistent with previous studies which showed increased temporal activation in MCI and at-risk subjects relative to healthy controls [29, 43–46], but in our study the fact that the increase in the posterior cingulate is different from the previous report [15] maybe contributed to the different diagnosis criteria. The decreased ALFF in the medial frontal gyrus implies that the activities of neurons in this region were reduced in the early stage of MCI, and the excitability of its project fibers to the posterior regions was downregulated; the activities of the inferior temporal gyrus and posterior cingulate are compensatorily increased to keep the excitability of network and reinforce the relationship between the front gyrus and medium/posterior brain regions. However, in patients with AD, the neuronal activities are reduced due to the disruption of the compensatory increase in the posterior cingulate in resting state and thereby the brain regions associated with cognitive function like parahippocampus are affected [47].

It is generally agreed that acupuncture plays a homeostatic role and may have a greater effect on patients with a pathological imbalance compared to the healthy controls [48, 49]. Hence, imaging its effect on the brain networks in patients may further help to elucidate the mechanisms by which acupuncture achieves its therapeutic effects. KI3 is one of the most important acupoints for dementia. Previous studies demonstrated that acupuncture at KI3 with a depth

TABLE 6: The brain areas of ALFF signal change significantly in MCI patients with acupuncture at sham acupoint compared with no acupuncture in the resting state.

Volume	Anatomical area	BA	H	<i>x</i>	<i>y</i>	<i>z</i>	Peak <i>t</i> value	Peak <i>P</i> value
864	Superior temporal gyrus	41	R	49.5	-31.5	11.5	-6.4773	$6.5 \times 10^{-4}$
864	Precentral gyrus	6	L	-46.5	-7.5	32.5	10.425	$4.4 \times 10^{-5}$
648	Medial frontal gyrus		R	13.5	34.5	35.5	12.005	$2.0 \times 10^{-5}$
594	Medial frontal gyrus	6	L	-10.5	-19.5	53.5	6.0288	$9.5 \times 10^{-4}$

BA: Brodmann area; H: hemisphere; *x*: *x*-axis; *y*: *y*-axis; *z*: *z*-axis; L: left; and R: right.

TABLE 7: The brain areas of ALFF signal change significantly in MCI patients with acupuncture at KI3 compared with acupuncture at sham acupoint in the resting state.

Volume	Anatomical area	BA	H	<i>x</i>	<i>y</i>	<i>z</i>	Peak <i>t</i> value	Peak <i>P</i> value
1593	Middle frontal gyrus	46	L	-43.5	19.5	20.5	-6.3792	$7.0 \times 10^{-4}$
864	Superior temporal gyrus	22	R	55.5	-28.5	5.5	15.064	$5.4 \times 10^{-6}$
594	Cingulate gyrus	31	R	7.5	-43.5	38.5	8.1928	$1.8 \times 10^{-4}$

BA: Brodmann area; H: hemisphere; *x*: *x*-axis; *y*: *y*-axis; *z*: *z*-axis; L: left; and R: right.

of 1-2 cm enhanced the correlations related to the temporal regions in the poststimulus resting brain in MCI patients [31]. In the present study, we also found that acupuncture at KI3 could change more ALFF in MCI patients than that in healthy subjects. In MCI patients, acupuncture at KI3 increased ALFF in left parahippocampus, cingulate, and middle temporal gyrus of both sides and decreased it in precuneus. Those brain regions are components of the default model network. In MCI patients, acupuncture enhances the neuronal activity in the brain regions associated with cognitive function like parahippocampal gyrus and inhibits compensatory increase of activity in temporal regions like precuneus. The enhancement or inhibition of neuronal activities in above brain regions maintains the physiological homeostasis of default model network [7]. Interestingly, in healthy subjects, acupuncture did not significantly change neuronal activities in resting state. We speculated that in the healthy subjects the homeostasis of the neuronal activities in different brain regions is maintained well. In another study regarding the effect of acupuncture on ALFF in AD patients, we also found that acupuncture did not significantly affect the neuronal activities of the default network in rest state (data not shown). The efficiency of acupuncture on the default network may be reduced by the loss of neurons of brain regions associated with cognitive function. These data also give a hint that the early stage may be a “window of opportunity” to prevent dementia aggravation by acupuncture.

In the current study, we did not find the specific regularity from the difference between resting states with and without acupuncture at real or sham acupoint. Acupuncture, as a mechanic stimulation, may activate or inhibit one or one more brain region directly or may evoke or inhibit one brain region which affects other regions. This may be why we can see that the increase or decrease of neuronal activities induced by acupuncture at KI3 in some regions is similar to those induced by acupuncture at sham acupoint.

Specific effect of acupoints is an interesting issue which is helpful for the elucidation of the mechanism response for acupuncture. To verify the hypothesis that a specific region

can be activated by acupuncture at an acupoint, we compared the activated brain regions by acupuncture at KI3 or sham acupoint and found that although acupuncture at either KI3 or sham acupoint can induce the increase or decrease of ALFF in the same brain region, but in some brain regions, a few of brain regions show different effects between acupuncture at KI3 and sham acupoint. Our results support the hypothesis that different acupoints can produce the different effects on some brain regions. Similar anatomical characteristics of KI3 and sham acupoint may be the reason that only few brain regions show different effects. To further elucidate the specific effect of acupoint, future studies should be directed to examine the effects of real and sham acupoints where anatomical characteristics are different significantly.

In general, we concluded that acupuncture at KI3 and sham acupoint improved the neuronal activities of the certain cognitive-related regions including medial frontal gyrus, inferior temporal gyrus, and posterior cingulate, which are components of default network. Acupuncture displays more significant effect on neuronal activities of the above brain regions in MCI patients than that in healthy controls. In MCI patients, acupuncture at KI3 presents different effects on the neuronal activities in middle frontal gyrus, superior temporal gyrus, and cingulate gyrus from those of acupuncture at sham acupoint and also exhibits different effects on a few of brain regions.

## Conflict of Interests

No conflict of interests, financial or otherwise, is declared by the authors.

## Authors' Contribution

Baohui Jia and Jianping Jia designed the conception; Baohui Jia, Zhishun Liu, Baoquan Min, and Aihong Zhou conducted the trials; Zhenchang Wang and Yong Li analyzed data; Baohui Jia and Haifa Qiao interpreted the results and

prepared figures; Haifa Qiao and Baohui Jia drafted the paper; Haifa Qiao, Baohui Jia, and Jianping Jia edited and revised the paper; and Baohui Jia, Zhishun Liu, Baoquan Min, Zhenchang Wang, Aihong Zhou, Yong Li, Haifa Qiao, and Jianping Jia approved the final version of the paper.

## Acknowledgments

This work was supported by the National Natural Science Foundation of China grant (no. 81273831) and Intramural Program of Institute of Acupuncture and Moxibustion (no. ZZ12006) to Haifa Qiao. The authors thank Dr. Yufeng Zang for data analysis.

## References

- [1] R. C. Petersen, "Mild cognitive impairment as a diagnostic entity," *Journal of Internal Medicine*, vol. 256, no. 3, pp. 183–194, 2004.
- [2] R. C. Petersen, G. E. Smith, S. C. Waring, R. J. Ivnik, E. G. Tangalos, and E. Kokmen, "Mild cognitive impairment: clinical characterization and outcome," *Archives of Neurology*, vol. 56, no. 3, pp. 303–308, 1999.
- [3] B. Biswal, F. Z. Yetkin, V. M. Haughton, and J. S. Hyde, "Functional connectivity in the motor cortex of resting human brain using echo-planar MRI," *Magnetic Resonance in Medicine*, vol. 34, no. 4, pp. 537–541, 1995.
- [4] P. Fransson, "Spontaneous low-frequency BOLD signal fluctuations: an fMRI investigation of the resting-state default mode of brain function hypothesis," *Human Brain Mapping*, vol. 26, no. 1, pp. 15–29, 2005.
- [5] V. Kiviniemi, J. Jauhainen, O. Tervonen et al., "Slow vasomotor fluctuation in fMRI of anesthetized child brain," *Magnetic Resonance in Medicine*, vol. 44, pp. 373–378, 2000.
- [6] F. Bai, Z. Zhang, H. Yu et al., "Default-mode network activity distinguishes amnesic type mild cognitive impairment from healthy aging: a combined structural and resting-state functional MRI study," *Neuroscience Letters*, vol. 438, no. 1, pp. 111–115, 2008.
- [7] M. D. Greicius, G. Srivastava, A. L. Reiss, and V. Menon, "Default-mode network activity distinguishes Alzheimer's disease from healthy aging: evidence from functional MRI," *Proceedings of the National Academy of Sciences of the United States of America*, vol. 101, no. 13, pp. 4637–4642, 2004.
- [8] Y. He, L. Wang, Y. Zang et al., "Regional coherence changes in the early stages of Alzheimer's disease: a combined structural and resting-state functional MRI study," *NeuroImage*, vol. 35, no. 2, pp. 488–500, 2007.
- [9] S.-J. Li, Z. Li, G. Wu, M.-J. Zhang, M. Franczak, and P. G. Antuono, "Alzheimer disease: evaluation of a functional MR imaging index as a marker," *Radiology*, vol. 225, no. 1, pp. 253–259, 2002.
- [10] V. Maxim, L. Şendur, J. Fadili et al., "Fractional Gaussian noise, functional MRI and Alzheimer's disease," *NeuroImage*, vol. 25, no. 1, pp. 141–158, 2005.
- [11] C. Sorg, V. Riedl, M. Mühlau et al., "Selective changes of resting-state networks in individuals at risk for Alzheimer's disease," *Proceedings of the National Academy of Sciences of the United States of America*, vol. 104, no. 47, pp. 18760–18765, 2007.
- [12] L. Wang, Y. Zang, Y. He et al., "Changes in hippocampal connectivity in the early stages of Alzheimer's disease: evidence from resting state fMRI," *NeuroImage*, vol. 31, no. 2, pp. 496–504, 2006.
- [13] K. Wang, M. Liang, L. Wang et al., "Altered functional connectivity in early Alzheimer's disease: a resting-state fMRI study," *Human Brain Mapping*, vol. 28, no. 10, pp. 967–978, 2007.
- [14] H.-Y. Zhang, S.-J. Wang, J. Xing et al., "Detection of PCC functional connectivity characteristics in resting-state fMRI in mild Alzheimer's disease," *Behavioural Brain Research*, vol. 197, no. 1, pp. 103–108, 2009.
- [15] Z. Wang, C. Yan, C. Zhao et al., "Spatial patterns of intrinsic brain activity in mild cognitive impairment and Alzheimer's disease: a resting-state functional MRI study," *Human Brain Mapping*, vol. 32, no. 10, pp. 1720–1740, 2011.
- [16] L. Lu, Y. Liu, W. Zhu, J. Shi, W. Ling, and T. R. Kosten, "Traditional medicine in the treatment of drug addiction," *The American Journal of Drug and Alcohol Abuse*, vol. 35, no. 1, pp. 1–11, 2009.
- [17] G. Li and E. S. Yang, "An fMRI study of acupuncture-induced brain activation of aphasia stroke patients," *Complementary Therapies in Medicine*, vol. 19, no. 1, pp. S49–S59, 2011.
- [18] X.-Y. Zhong, X.-X. Su, J. Liu, and G.-Q. Zhu, "Clinical effects of acupuncture combined with nimodipine for treatment of vascular dementia in 30 cases," *Journal of Traditional Chinese Medicine*, vol. 29, no. 3, pp. 174–176, 2009.
- [19] Y. Feng, L. Bai, Y. Ren et al., "Investigation of the large-scale functional brain networks modulated by acupuncture," *Magnetic Resonance Imaging*, vol. 29, no. 7, pp. 958–965, 2011.
- [20] C. Zhong, L. Bai, R. Dai et al., "Modulatory effects of acupuncture on resting-state networks: a functional MRI study combining independent component analysis and multivariate granger causality analysis," *Journal of Magnetic Resonance Imaging*, vol. 35, no. 3, pp. 572–581, 2012.
- [21] L. Bai, W. Qin, J. Tian et al., "Acupuncture modulates spontaneous activities in the anticorrelated resting brain networks," *Brain Research*, vol. 1279, pp. 37–49, 2009.
- [22] L. Bai, W. Qin, J. Tian, J. Dai, and W. Yang, "Detection of dynamic brain networks modulated by acupuncture using a graph theory model," *Progress in Natural Science*, vol. 19, no. 7, pp. 827–835, 2009.
- [23] R. P. Dhond, C. Yeh, K. Park, N. Kettner, and V. Napadow, "Acupuncture modulates resting state connectivity in default and sensorimotor brain networks," *Pain*, vol. 136, no. 3, pp. 407–418, 2008.
- [24] B. Yan, K. Li, J. Xu et al., "Acupoint-specific fMRI patterns in human brain," *Neuroscience Letters*, vol. 383, no. 3, pp. 236–240, 2005.
- [25] L. Bai, J. Tian, C. Zhong et al., "Acupuncture modulates temporal neural responses in wide brain networks: evidence from fMRI study," *Molecular Pain*, vol. 6, article 73, 2010.
- [26] K. K. Hui, J. Liu, N. Makris et al., "Acupuncture modulates the limbic system and subcortical gray structures of the human brain: evidence from fMRI studies in normal subjects," *Human Brain Mapping*, vol. 9, pp. 13–25, 2000.
- [27] M. T. Wu, J. C. Hsieh, J. Xiong et al., "Central nervous pathway for acupuncture stimulation: localization of processing with functional MR imaging of the brain—Preliminary experience," *Radiology*, vol. 212, no. 1, pp. 133–141, 1999.
- [28] G. Zhang, H. Yin, Y.-L. Zhou et al., "Capturing amplitude changes of low-frequency fluctuations in functional magnetic resonance imaging signal: a pilot acupuncture study on NeiGuan (PC6)," *Journal of Alternative and Complementary Medicine*, vol. 18, no. 4, pp. 387–393, 2012.



- [29] Z. Wang, B. Nie, D. Li et al., "Effect of acupuncture in mild cognitive impairment and Alzheimer disease: a functional MRI study," *PLoS ONE*, vol. 7, no. 8, Article ID e42730, 2012.
- [30] Y. Zhou and J. Jia, "Effect of acupuncture given at the HT 7, ST 36, ST 40 and KI 3 acupoints on various parts of the brains of Alzheimer's disease patients," *Acupuncture & Electro-Therapeutics Research*, vol. 33, no. 1-2, pp. 9–17, 2008.
- [31] Y. Feng, L. Bai, Y. Ren et al., "fMRI connectivity analysis of acupuncture effects on the whole brain network in mild cognitive impairment patients," *Magnetic Resonance Imaging*, vol. 30, no. 5, pp. 672–682, 2012.
- [32] M. F. Folstein, S. E. Folstein, and P. R. McHugh, "'Mini-mental state': A practical method for grading the cognitive state of patients for the clinician," *Journal of Psychiatric Research*, vol. 12, pp. 189–198, 1975.
- [33] L. Berg, "Clinical Dementia Rating (CDR)," *Psychopharmacology Bulletin*, vol. 24, no. 4, pp. 637–639, 1988.
- [34] W. G. Rosen, R. D. Terry, P. A. Fuld, R. Katzman, and A. Peck, "Pathological verification of ischemic score in differentiation of dementias," *Annals of Neurology*, vol. 7, no. 5, pp. 486–488, 1980.
- [35] K. J. Friston, J. Ashburner, C. D. Frith, J.-B. Poline, J. D. Heather, and R. S. J. Frackowiak, "Spatial registration and normalization of images," *Human Brain Mapping*, vol. 3, no. 3, pp. 165–189, 1995.
- [36] J. Talairach and P. Tournoux, *Co-Planar Stereotaxic Atlas of the Human Brain*, Thieme Medical Publishers, New York, NY, USA, 1st edition, 1988.
- [37] J. Ashburner and K. J. Friston, "Nonlinear spatial normalization using basis functions," *Human Brain Mapping*, vol. 7, pp. 254–266, 1999.
- [38] X. N. Cheng, *Chinese Acupuncture and Moxibustion*, Foreign Language Press, Beijing, China, 1999.
- [39] Y. F. Zang, Y. He, C. Z. Zhu et al., "Altered baseline brain activity in children with ADHD revealed by resting-state functional MRI," *Brain & Development*, vol. 29, no. 2, pp. 83–91, 2007.
- [40] S. Lui, X. Huang, L. Chen et al., "High-field MRI reveals an acute impact on brain function in survivors of the magnitude 8.0 earthquake in China," *Proceedings of the National Academy of Sciences of the United States of America*, vol. 106, no. 36, pp. 15412–15417, 2009.
- [41] C. Yan, D. Liu, Y. He et al., "Spontaneous brain activity in the default mode network is sensitive to different resting-state conditions with limited cognitive load," *PLoS ONE*, vol. 4, no. 5, Article ID e5743, 2009.
- [42] H. Yang, X.-Y. Long, Y. Yang et al., "Amplitude of low frequency fluctuation within visual areas revealed by resting-state functional MRI," *NeuroImage*, vol. 36, no. 1, pp. 144–152, 2007.
- [43] S. Y. Bookheimer, M. H. Strojwas, M. S. Cohen et al., "Patterns of brain activation in people at risk for Alzheimer's disease," *The New England Journal of Medicine*, vol. 343, no. 7, pp. 450–456, 2000.
- [44] B. C. Dickerson, D. H. Salat, J. F. Bates et al., "Medial temporal lobe function and structure in mild cognitive impairment," *Annals of Neurology*, vol. 56, no. 1, pp. 27–35, 2004.
- [45] B. C. Dickerson and R. A. Sperling, "Functional abnormalities of the medial temporal lobe memory system in mild cognitive impairment and Alzheimer's disease: insights from functional MRI studies," *Neuropsychologia*, vol. 46, no. 6, pp. 1624–1635, 2008.
- [46] A. Hämäläinen, M. Pihlajamäki, H. Tanila et al., "Increased fMRI responses during encoding in mild cognitive impairment," *Neurobiology of Aging*, vol. 28, no. 12, pp. 1889–1903, 2007.
- [47] W. Jagust, R. Thisted, M. D. Devous Sr. et al., "SPECT perfusion imaging in the diagnosis of Alzheimer's disease: a clinical-pathologic study," *Neurology*, vol. 56, no. 7, pp. 950–956, 2001.
- [48] L. Zhu, *New Acupuncture*, People's Press, Beijing, China, 1954.
- [49] T. J. Kaptchuk, "Acupuncture: theory, efficacy, and practice," *Annals of Internal Medicine*, vol. 136, no. 5, pp. 374–383, 2002.