

Robotic-assisted simple prostatectomy with complete urethrovesical reconstruction

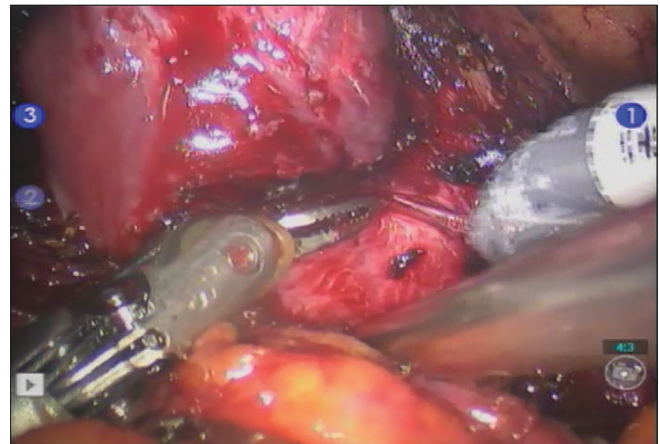
Deepak Dubey, A. K. Hemal¹

Department of Urology, Manipal Hospital, Airport Road, Bangalore, India, ¹Wake Forest University School of Medicine, Winston-Salem, North Carolina, USA

SURGICAL TECHNIQUE

Minimally invasive treatment options for large prostatic adenomas include Holmium laser prostatectomy and laparoscopic simple prostatectomy. We describe a technique of robotic simple prostatectomy with complete urethrovesical reconstruction.

A five-port technique is used. After docking the da Vinci robot the retropubic space is entered and the fat over the prostatovesical junction is cleaned to identify the bladder neck. An incision is made over the prostatic capsule at the level of the bladder neck. A plane is created between the prostate capsule and adenoma. Under direct vision, the entire prostatic adenoma is shelled from the prostatic fossa. The hand-stimulated endo-wrist movements of the robotic arms in the capsular plane allow for haemostatic and meticulous dissection and prevent avulsion of the prostatic capsule. The three-dimensional vision coupled with magnification allows



Video: Robotic simple prostatectomy

See video on www.indianjurol.com

For correspondence: Dr. Deepak Dubey, Department of Urology, Manipal Hospital, Airport Road, Bangalore – 560 037, E-mail: drdeepakdubey@gmail.com

Access this article online

Quick Response Code:



Website:
www.indianjurol.com

DOI:
10.4103/0970-1591.98479

for a precise apical dissection, thereby avoiding injury to the external sphincter. A complete urethrovesical anastomosis is performed using a 3-0 barbed vicryl suture. A catheter is left postoperatively for three days and removed following an MCU. Complete urethrovesical reconstruction is possible with excellent vision and assisted suturing using the da Vinci robot. This maneuver completely obliterates the prostatic cavity and has the potential for better haemostasis and early catheter removal.

2nd prize in the best video category in Urological society of India conference, Bangalore 2012

Three patients with large prostatic adenomas have undergone robotic simple prostatectomy with complete urethrovesical reconstruction. The mean operative time was 220 min with a mean blood loss of 160 ml. None of the patients required bladder irrigation postoperatively. A micturating cystourethrogram was performed on postoperative Day 3 which demonstrated excellent healing. The mean hospital stay was 3.5 days.

Robotic simple prostatectomy with complete urethrovesical reconstruction is a minimally invasive technique for large prostatic adenomas which provides excellent outcomes.

How to cite this article: Dubey D, Hemal AK. Robotic-assisted simple prostatectomy with complete urethrovesical reconstruction. Indian J Urol 2012;28:231-2.