

RESEARCH ARTICLE

Yarrow supercritical extract exerts antitumoral properties by targeting lipid metabolism in pancreatic cancer

Lamia Mouhid¹*, Marta Gómez de Cedrón¹*, Elena García-Carrascosa¹, Guillermo Reglero^{1,2}, Tiziana Fornari², Ana Ramírez de Molina¹*

1 Molecular Oncology and Nutritional Genomics of Cancer, IMDEA-Food Institute, CEI UAM + CSIC, Madrid, Spain, **2** Production and Characterization of Novel Foods Department, Institute of Food Science Research CIAL, CEI UAM + CSIC, Madrid, Spain

* These authors contributed equally to this work.

* ana.ramirez@imdea.org (ARDM); marta.gomezdecedron@imdea.org (MGDC)



OPEN ACCESS

Citation: Mouhid L, Gómez de Cedrón M, García-Carrascosa E, Reglero G, Fornari T, Ramírez de Molina A (2019) Yarrow supercritical extract exerts antitumoral properties by targeting lipid metabolism in pancreatic cancer. *PLoS ONE* 14(3): e0214294. <https://doi.org/10.1371/journal.pone.0214294>

Editor: Olga A. Sukocheva, Flinders University of South Australia, AUSTRALIA

Received: September 27, 2018

Accepted: March 11, 2019

Published: March 26, 2019

Copyright: © 2019 Mouhid et al. This is an open access article distributed under the terms of the [Creative Commons Attribution License](https://creativecommons.org/licenses/by/4.0/), which permits unrestricted use, distribution, and reproduction in any medium, provided the original author and source are credited.

Data Availability Statement: All relevant data are within the manuscript and its Supporting Information files.

Funding: This work was supported by Ministerio de Economía y Competitividad del Gobierno de España (MINECO, Plan Nacional I+D+i AGL2013-48943-C2 and AGL2016-76736-C3), Gobierno regional de la Comunidad de Madrid (P2013/ABI-2728, ALIBIRD-CM) and EU Structural Funds. The funders had no role in study design, data collection

Abstract

Metabolic reprogramming is considered a hallmark of cancer. Currently, the altered lipid metabolism in cancer is a topic of interest due to the prominent role of lipids regulating the progression of various types of tumors. Lipids and lipid-derived molecules have been shown to activate growth regulatory pathways and to promote malignancy in pancreatic cancer. In a previous work, we have described the antitumoral properties of Yarrow (*Achillea Millefolium*) CO₂ supercritical extract (Yarrow SFE) in pancreatic cancer. Herein, we aim to investigate the underlying molecular mechanisms by which Yarrow SFE induces cytotoxicity in pancreatic cancer cells. Yarrow SFE downregulates SREBF1 and downstream molecular targets of this transcription factor, such as fatty acid synthase (FASN) and stearyl-CoA desaturase (SCD). Importantly, we demonstrate the *in vivo* effect of Yarrow SFE diminishing the tumor growth in a xenograft mouse model of pancreatic cancer. Our data suggest that Yarrow SFE can be proposed as a complementary adjuvant or nutritional supplement in pancreatic cancer therapy.

Introduction

Pancreatic cancer is the second leading cause of cancer-related deaths worldwide. It is an aggressive malignancy with poor prognosis: the overall 5-year survival rate is less than 5%. Risk factors described to be linked with its development are obesity and chronic pancreatitis, but also tobacco smoking, heavy alcohol intake, unbalanced diets, or high red meat intake [1,2]. Given the absence of indicators of illness, it is often diagnosed at metastatic late stages. Although surgery remains the main beneficial treatment followed by chemotherapy and radiation, current therapies do not improve patient's survival. Therefore, the development of effective therapeutic strategies targeting molecular alterations associated with pancreatic tumor growth and the resistance to apoptosis are needed to improve their survival.

and analysis, decision to publish, or preparation of the manuscript.

Competing interests: The authors have declared that no competing interests exist.

Abbreviations: SFE, Supercritical Fluid Extraction; SREBF, Sterol Regulatory Element Binding Transcription Factor; FASN, Fatty Acid Synthase; SCD, Stearoyl-CoA Desaturase; 5-fu, 5-fluorouracil.

In the last years, there has been a growing interest in the use of phytochemicals and dietary-derived compounds for prevention or for cancer treatment [3,4]. Thus, some of them have shown antitumoral properties *in vitro* and *in vivo* [4–6]. In this regard, there are some phytochemicals derived from natural sources, such as taxol and camptothecin, which are extensively used in clinics to treat several tumors [7,8]. Nevertheless, pancreatic cancer remains one of the most resistant tumor [9]. Current chemotherapy is based on the use of gemcitabine, 5-fluorouracil, irinotecan and/or oxaliplatin but new complementary approaches are required.

On the other hand, metabolic reprogramming is well-recognized as a hallmark of cancer [10] and thus, there is an increased interest for targeting its altered metabolism. Tumors display high rates of cell proliferation and they can acquire malignancy associated to stemness and invasive properties. Moreover, highly proliferative cells hold an exacerbated glucose uptake sustaining aerobic glycolysis (Warburg effect) for anabolic processes [11–13]. In addition, increased glutamine uptake and glutaminolysis support carbon and nitrogen backbones for anabolic purposes. Nitrogen, in addition to its role in protein and nucleotide biosynthesis, is crucial for the synthesis of glutathione and essential to maintain the redox homeostasis [12–14].

Cancer cells are also characterized by having an increased *de novo* fatty acid synthesis which contributes to the carcinogenic process and cancer cell survival. Metabolic fatty acid (FA) enzymes are essential for neoplastic growth as well as for the signaling of key tumorigenic pathways. During tumor development, lipid associated alterations include an increase in lipogenic enzymes expression such as fatty acid synthase (FASN), acetyl carboxylase (ACC), stearoyl-CoA desaturase (SCD), ATP citrate lyase (ACLY), and an increase in the synthesis and uptake of cholesterol. As a result, tumor cells can control membrane fluidity, which has an impact on intracellular oncogenic signaling pathways, and sharpens resistance to chemotherapeutics. In addition, the increased storage of lipid and cholesterol molecules into lipid droplets allows tumor cells to gain independence from the extracellular nutrient availability [15,16].

In this context, many authors have described alterations in expression of lipid metabolic genes, and their link with the development and prognosis in cancer [17,18]. Thus, targeting specific enzymes involved in fatty acid and cholesterol synthesis, or affecting genes involved in their transcriptional regulation could be a novel approach for cancer treatment [19,20].

Recently we have described the antitumoral properties of *Achillea Millefolium* derived extract, commonly known as Yarrow, obtained by Supercritical Fluid Technology (SFE), in pancreatic cancer cell lines [21]. Yarrow SFE diminishes cell viability of pancreatic cancer cells in a dose dependent manner, induces apoptosis and inhibits anchorage independent cell growth. Moreover, Yarrow SFE synergizes with 5-fluorouracil (5-Fu) which is currently used in the clinics in pancreatic cancer treatment [22]. Herein, we identify Sterol Regulatory Element-Binding Transcription Factor 1 (SREBF1) as a molecular target of Yarrow SFE which is implicated, at least partially, in the antitumoral activities observed. Importantly, downstream molecular targets of SREBF1, such as FASN and SCD, are also diminished both at the transcriptional and post-transcriptional levels. These alterations would affect intracellular lipid homeostasis which also correlate with the inhibition of invasiveness properties of pancreatic cancer cells.

Importantly, we also demonstrate the *in vivo* effect of Yarrow SFE diminishing the tumor growth in a xenograft model of pancreatic cancer. Based on these results, Yarrow supercritical extract could be proposed as a complementary adjuvant in pancreatic cancer therapy.

Methods

Yarrow extract

Yarrow SFE was obtained by CO₂ supercritical fluid extraction (Thar Technology, model SF2000). Briefly, a CO₂ flux of 70 g/min, 140 bar and 40°C for 180 minutes was applied to 400

g of dried and grounded Yarrow in a 2L cylinder. The resulting extract was collected with absolute ethanol, and the dissolvent was removed using a rotavapor at low temperature (30°C).

The extract contains volatile oils which comprises monoterpenes such as eudesmol (11.19%) and borneol (16.28%) as major compounds, and sesquiterpenes as caryophyllene (4.90%), α -cadinol (8.22%), α -bisabolol (2.73%), among others [21].

Cell culture

Pancreatic cancer cells MIA PaCa-2 and PANC-1 were purchased from American Type Culture Collection (Manassas, VA) and were cultured in DMEM media (2 mM glutamine) and 10% fetal bovine serum (LONZA Iberica, S.A) in 5% CO₂ atmosphere at 37°C and 95% humidity. 5×10^6 cells were seeded in M6 multiwell plates for microarray assays and in a p60 culture dishes to isolate proteins for WB analysis and mRNA for qPCR.

RNA isolation and gene expression assay

MIA Paca-2 and PANC-1 cells were plated and after an overnight incubation, cells were treated with 30 and 70 μ g/mL of Yarrow extract for 48 hours. Non-treated cells were kept as controls. Total RNA was isolated from each condition with RNeasy Mini Kit (Qiagen Iberica) following manufacturer's instructions. RNA quality and quantity were checked by UV spectroscopy (Nanodrop 2000 Spectrophotometer, Thermo Scientific, Waltham).

RNA extracted from MIA PaCa-2 was subsequently used for a comparative microarray gene expression analysis between non-treated and 30 and 70 μ g/mL Yarrow treated cells. The analysis was performed at the Genomic Service Facilities at the National Center of Biotechnology (CNB-Madrid, Spain). RNA integrity was first determined using a 2100 Bioanalyzer (Agilent Technologies, Santa Clara, CA). RNAs were then reverse transcribed and fluorescently tagged using the one color Low Input Quick Amp Labeling Kit (Agilent Technologies), according to manufacturer's instructions. The complementary RNAs were hybridized in an Agilent Sure Print G3 Human 8x60 K (Whole Human Genome Microarray Kit) platform, using the one-color gene expression system as described by the manufacturer (Agilent Technologies).

Quantitative real-time polymerase chain reaction (qPCR)

Same amounts for each RNAs samples were reverse transcribed by a high Capacity cDNA Archive Kit (applied Biosystems) for 2 hours at 37°C. To determine gene expression, Real-time-qPCRs were performed on the 7900HT-Real-Time PCR System (Applied Biosystems, Foster City, CA) using the TaqMan gene expression assays. The probe sets were Hs01005622, Hs01682761, Hs01088691, Hs00607129, Hs 1597989, Hs99999901_s1 for FASN, SCD, SREBF1, HSPA-5, ASS1 and 18s, respectively. For the isoforms SREBP1-a and SREBP1-c, the primers used to quantify their expression were hSREBP-1a (Fw: GGAGGGGTAGGGCCAACGG CCT; Rv: CATGTCTTCGAAAGTGCAATCC) and hSREBP-1c (Fw: TCAGCGAGGCGGCTTTGG AGCAG; Rv: CATGTCTTCGATGTCGGTCAG). The relative expression quantity for each gene (RQ) was determined following the $2^{-\Delta\Delta Ct}$ Livak method [23].

RQ Manager Software and Expression Suite Software (Applied Biosystems) were used to calculate the relative expression of each gene.

Intracellular cholesterol and neutral lipid content

To determine the total intracellular cholesterol, the assay was carried out following the instructions of Cholesterol Detection Kit (cell-based) (BioVision Inc, San Francisco, USA). Briefly,

cells were cultured with 50 and 70 $\mu\text{g}/\text{mL}$ Yarrow for 48 hours before to be extracted with 200 μL of chloroform: Isopropanol: NP-40 (7:11:0.1) in a micro-homogenizer. The lipid fraction was collected and mingled with a cholesterol enzyme mix (which includes cholesterol esterase), and the absorbance of the resultant colorimetric assay was measured at 570 nm.

Quantification of neutral lipid content was done by mean of Bodipy staining. As a brief description, cells were treated with 2 μM BODIPY staining solution (BODIPY 493/503, Invitrogen) in PBS for 15 min at 37°C and fixed with 4% paraformaldehyde (PFA). Images were obtained with a Leica DM IL microscope, 40X Plan Fluotar objective and registered using Leica Application Suite (LAS).

Immunoblot analysis

After 48 hours incubation with Yarrow SFE, cells were washed and detached using trypsin. Protein lysates were obtained with Laemmli buffer (60 mM Tris-HCl, 10% glycerol 2% SDS) and centrifuged at 5000 rpm for 5 minutes. After quantification (BCA-Piercing), denaturalized protein samples were separated through a 4–15% Mini-Protean TGX Precast Protein Gel (BioRad) and transferred onto a nitrocellulose membrane using Trans-Blot Turbo Transfer System (BioRad). Membranes were incubated in 5% non-fat dried milk PBS (1% Tween-20) at room temperature for 1 hour and then incubated overnight with primary antibodies against FASN (Cell Signaling) and SCD (kindly provided by Dr Demoulin [24]). α -tubulin (Sigma-Aldrich) was used as a loading control.

Invasion through matrigel

To evaluate the effect of Yarrow SFE on invasiveness, MIA PaCa-2 cells were treated for 48 hours with different doses of Yarrow SFE. After discarding dead cells, a total of 2.2×10^4 alive ones were then maintained in 1% FBS DMEM (without extract) and seeded onto Matrigel-coated Transwell chambers (8.0 μm pore) (Corning Life Sciences). In the lower chamber, 700 μL of DMEM with 10% FBS were added as a chemo attractant. 48 hours later, inserts were washed twice with PBS and fixed with 4% paraformaldehyde prior to crystal violet staining. Cells that have invaded through Matrigel in four random fields were counted using a light microscope at $\times 10$ magnification.

Animals and tumor xenograft model

All procedures were approved by the Animal Care and Use Committee of the Consejo Superior de Investigaciones Científicas (CSIC, Spain), and by the authority of the Comunidad de Madrid (PROEX112/17). Male Hsd: Athymic Nude-Foxn1nu nude mice (7 weeks old, weighing 26–31 g) were purchased from Envigo RMS (Spain). Mice were kept in a temperature and humidity-controlled environment, with 12 hours light/dark-cycle and had access to water and standard chow (Safe, D40 RMM. Proteins 15.2%, Fat: 3.2%, Minerals Ash: 4.4%, Fiber: 4.1%) *ad libitum*.

The xenograft model was obtained by injecting subcutaneously into the back loin 1.5×10^6 MIA PaCa-2 cells diluted in DMEM: Matrigel (50:50). After 15 days, 8 animals received Yarrow SFE extract (1000 mg/Kg), diluted in corn oil (Sigma-Aldrich) in 150 μL as final volume. The treatment was administrated using an orogastric silicon-tube, three times per week for 15 days. Intra-gastric administration of an equal volume of corn oil alone was given to 8 control animals.

Human endpoints were established if tumors had reached 1.6 cm^3 or more, or if there had been signs of ulceration, or mice had lost 20% or more of body weight, or if mice had presented piloerection, stereotyped or aggressive behaviors, pain indicative postures, lack of

activity and tremors or convulsions. Animals were daily monitored, assessing the room temperature and humidity, and their health by checking their behavior and general appearance. Body weight was measured weekly. The antitumor effect of Yarrow was monitored by estimating tumor volume (mm^3) and calculated as $(W^2 \times L) \times 0.52$, where W is tumor width (in mm) and L is tumor length (in mm).

Finally, animals were euthanized by cervical dislocation.

Immunohistochemistry

Immunohistochemistry was performed following standard protocols. Mouse monoclonal antibody against Ki-67 (IR626, DAKO) was used on tissue paraffin sections ($4\mu\text{m}$). Images were obtained through the Axio Scan Z1 (Zeiss). The quantification of Ki-67 positive cells was done with ZEN Lite 2.3 software (Zeiss).

Statistical analysis

Microarray gene expression data were obtained and analyzed using FIESTA software (version 1.0, <http://bioinfo.gp.cnb.csic.es/tools/FIESTA>; Centro Nacional de Biotecnología, Madrid, Spain). Statistical analyses were determined by the Limma package (linear models for microarray data) (Smyth, 2004), using a p -value < 0.05 as limit of significance. Overexpression and repression were considered from a minimum change of 2-fold of the non-treated cells (control).

RT-qPCR results were analyzed by using two-way ANOVA (Bonferroni post hoc test). Western Blot results were quantified by Image J and statistically analyzed by one-way ANOVA (Bonferroni post hoc test). One-way ANOVA was also used to determine differences in invasion and 3D-culture. Results of *in vivo* experiments were analyzed with t-student statistical analysis. Statistical differences were considered significant when p -value was < 0.05 .

All the statistical analysis was performed with GraphPad Prim 6 statistical software.

Results

Yarrow SFE downregulates the expression of the lipid metabolism-master regulator SREBF1

In a previous work we have described that Yarrow SFE inhibits cell viability of MIA PaCa-2 and PANC-1 pancreatic cancer cell lines, with an induction of apoptotic cell death [22].

In order to identify the molecular targets implicated on the mechanism of action of Yarrow SFE, a comparative gene expression microarray (G2519F-026652 Human Gene Expression v2 4x44K Microarray) was performed (link to raw data: <https://www.ncbi.nlm.nih.gov/geo/query/acc.cgi?acc=GSE124043>). MIA PaCa-2 cells were treated with two different doses of Yarrow (IC_{50} : $31,45 \pm 8,56 \mu\text{g}/\text{mL}$ and $2 \times \text{IC}_{50}$) for 48 hours. Genes whose expression was significantly altered at both concentrations (p -value < 0.05), with a minimum of 2-fold change overexpression or repression, compared to control non-treated cells (DMSO), are listed in **Table 1**.

SREBF1 (Sterol Regulatory Element Binding Transcription Factor), ASS1 (Argininosuccinate Synthase) and HSPA-5 (Homo Sapiens Heat Shock protein 5) were selected for further validation by RT-qPCR due to their known association with tumor processes and with pancreatic cancer development. As shown in **Fig 1**, Yarrow SFE significantly diminished the expression levels of SREBF1 in a 25% and 48% after 30 and 70 $\mu\text{g}/\text{m}$ treatments respectively, compared to control cells (DMSO).

Table 1. Microarray data of differentially expressed genes after treatment of MIA PaCa-2 pancreatic cancer cell line with 30 and 70 µg/mL Yarrow for 48 hours. Data represent the value of the most significant probe for three independent experiments for each condition. Genes with a statistical significant difference (p-value < 0,05) and more than 2-fold absolute change variation compared to control (DMSO) are shown.

Yarrow (µg/mL)	Genes	Fold Change	P-value (Limma)	Systematic Name	Description	Cancer Ref.	Pancreatic Cancer Ref.
30	ASS1	-3,62	0,033	NM_000050	Homo sapiens argininosuccinate synthase 1, transcript variant 1	[25–27]	[28–30]
70		-4,38	0,0477				
30	CHD5	2,84	0,0036	NM_015557	Homo sapiens chromodomain helicase DNA binding protein 5	[31–33]	[34]
70		2,40	0,0026				
30	CREBZF	2,82	0,0017	NM_001039618	Homo sapiens CREB/ATF bZIP transcription factor, transcript variant 1	[35,36]	
70		2,08	0,0214				
30	CSTF3	2,08	0,0355	NM_001033505	Homo sapiens cleavage stimulation factor, transcript variant 2	[37,38]	
70		2,08	0,0269				
30	DHRS3	-2,78	0,0178	NM_004753	Homo sapiens dehydrogenase /reductase (SDR family) member 3	[39,40]	
70		-2,52	0,0435				
30	HLA-G	-2,80	0,0415	NM_002127	Homo sapiens major histocompatibility complex, class I, G	[41–43]	[44,45]
70		-3,58	0,0280				
30	HSPA5	-2,44	0,0406	NM_005347	Homo sapiens heat shock 70kDa protein 5 glucose-regulated protein,78kDa	[46–49]	[50–52]
70		-2,51	0,0444				
30	ICAM5	-2,05	0,0145	NM_003259	Homo sapiens intercellular adhesion molecule 5, telencephalin	[53,54]	
70		-2,02	0,0196				
30	ING3	2,44	0,0035	NM_019071	Homo sapiens inhibitor of growth family, member 3 transcript variant 1	[55,56]	
70		2,03	0,0152				
30	MEF2D	-2,98	0,0144	NM_005920	Homo sapiens myocyte enhancer factor 2D, transcript variant 1	[57–59]	
70		-2,18	0,0155				
30	PALM	-3,21	0,0028	NM_002579	Homo sapiens paralemmin, transcript variant 1	[60,61]	
70		-2,09	0,0271				
30	RAB11FIP1	-2,06	0,0334	NM_001002814	Homo sapiens RAB11 family interacting protein 1 (class I), transcript variant 3	[62]	
70		-2,11	0,0448				
30	SERPINA3	-3,01	0,0078	NM_001085	Homo sapiens serpin peptidase inhibitor, clade A (alpha-1 antitrypsin), member 3	[63,64]	
70		-2,27	0,0061				
30	SHC1	-2,21	0,0237	NM_003029	Homo sapiens SHC (Src homology 2 domain containing) transforming protein 1, transcript variant 2	[65]	[66]
70		-2,01	0,0359				
30	SKAP2	-2,61	0,0149	ENST00000345317	Src kinase associated phosphoprotein 2	[67,68]	[69]
70		-2,08	0,0346				
30	SREBF1	-2,75	0,0004	NM_001005291	Homo sapiens sterol regulatory element binding transcription factor 1, transcript variant 1	[70–74]	[75,76]
70		-2,05	0,0064				
30	TRIM44	-2,13	0,0351	NM_017583	Homo sapiens tripartite motif containing 44	[77–79]	
70		-2,07	0,0371				

<https://doi.org/10.1371/journal.pone.0214294.t001>

Sterol regulatory element binding proteins (SREBP) are master transcriptional regulators of the synthesis and uptake of lipids and cholesterol [80]. In mammals, there are two isoforms of SREBP proteins, SREBP1 and SREBP2. SREBP1 is mainly implicated in the expression of genes for *de novo* synthesis of fatty acids, meanwhile SREBP2 is dedicated to the regulation of genes involved in the synthesis and uptake of cholesterol. Nevertheless, SREBP1 and 2 significantly overlap in the regulation of lipid homeostasis [81,82].

SREBP1 has been found highly upregulated in several cancers. In humans, it includes, in turn, two isoforms: SREBP1c which regulates FA metabolism, and SREBP1a which is implicated in both fatty acid (FA) and cholesterol metabolism [81].

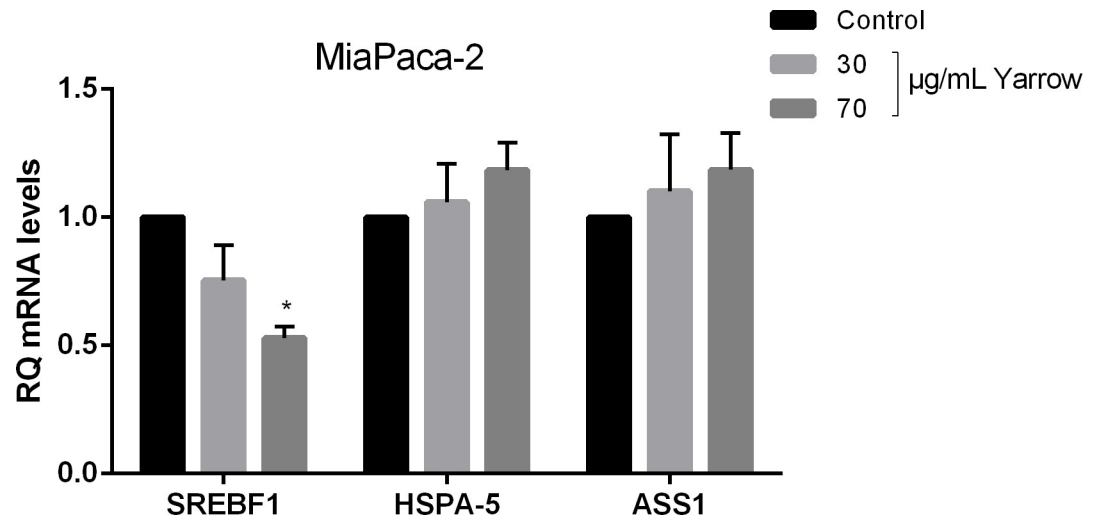


Fig 1. Microarray validation. mRNA relative expression in human pancreatic cancer-derived cells (MIA PaCa-2) treated with two different concentrations of Yarrow extract (30 and 70 µg/mL) in comparison with non-treated cells (subtracting the endogenous control 18S ribosomal RNA). Data represent the mean \pm S.E.M of three independent experiments each one performed in triplicate. Asterisks indicate statistical differences in treated cells in comparison with the control (DMSO) * $p < 0.05$.

<https://doi.org/10.1371/journal.pone.0214294.g001>

As individual functions of SREBPs are overlapped, we wanted to determine the effect of Yarrow SFE on the expression of the two SREBP1 isoforms. As shown in Fig 2A, RT-qPCR analysis showed that Yarrow SFE diminished the expression of SREBF1a and 1c similarly in a dose-dependent manner.

On the other hand, the altered cholesterol homeostasis is frequently linked to the tumorigenic process and malignancy of tumors [83]. Considering that SREBP1a and SREBP2 share around 45% of homology at the protein level, we wonder if Yarrow SFE extract could affect the expression of SREBF2 in a similar manner it does with SREBF1. Treatments with Yarrow SFE did not show a significant affectation of the expression levels of SREBF2 neither in MIA PaCa-2 (Fig 2B) nor in PANC-1 (Fig 2C). Indeed, when we analyzed the intracellular cholesterol content, we did not find differences between Yarrow SFE treatments compared to control cells (S1 Fig), certainly due to the non-alteration of SREBP2 expression.

These results suggest that SREBP2 can maintain the cholesterol homeostasis in spite of the downregulation of SREBP1, where Yarrow SFE specifically targets the expression of SREBF1 transcription factor.

Importantly, as the activity of SREBP1 is low in normal tissues and aberrantly increased in cancer pathogenesis [84], its inhibition has been considered a promising strategy for cancer treatment [75,82].

Yarrow SFE downregulates FASN and SCD downstream molecular targets of SREBP1

Multiple studies have revealed that oncogenic pathways such as PI3K/Akt signaling, which regulates glucose metabolism, and oncogenic Myc, which regulates glutamine metabolism, end up with the upregulation of SREBP1 to promote fatty acid synthesis [84–86].

Thus, SREBP1 connects oncogenic upregulation of glycolysis and/or glutaminolysis to lipogenesis [11], by inducing the expression of Fatty Acid Synthase (FASN) and the Stearoyl-CoA desaturase (SCD), among others. As we did not have observed any significant difference

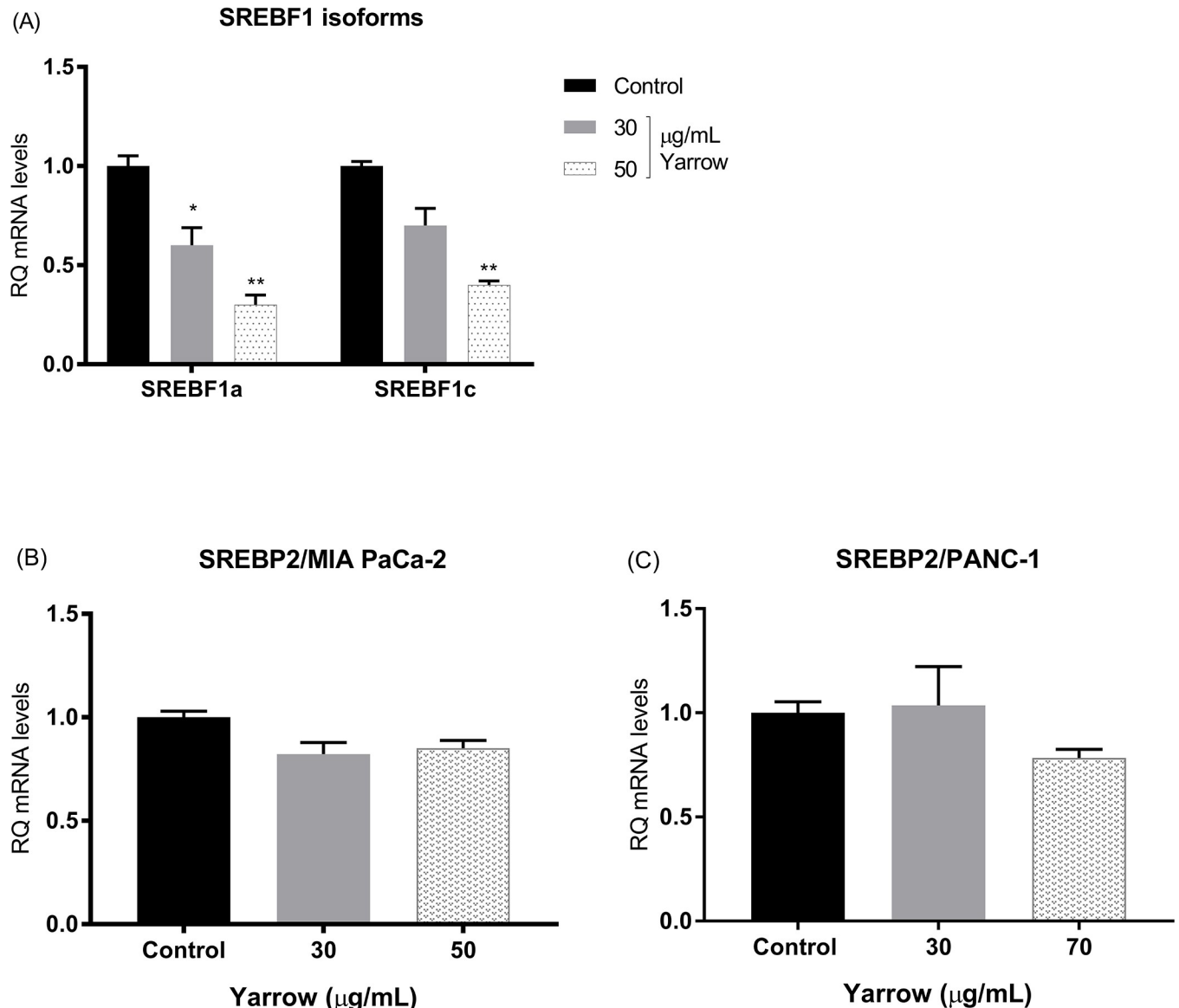


Fig 2. Yarrow SFE inhibits the expression of SREBP1 but not the expression of SREBP2. (A) Expression levels of SREBF1a and SREBF1c isoforms, (B) and levels of SREBF2 mRNA relative expression in human pancreatic cancer-derived MIA PaCa-2 (C) and PANC-1 cells treated 48 hours with different concentrations of Yarrow SFE. Data represent the mean \pm S.E.M of three independent experiments each one performed in triplicate. Asterisks indicate statistical differences in treated cells in comparison with control (DMSO) and * $p < 0.05$; ** $p < 0.01$.

<https://doi.org/10.1371/journal.pone.0214294.g002>

regardless cholesterol levels, we wonder if lipogenic genes regulated by SREBP1, such as FASN and SCD, could be altered. Yarrow SFE treatments of MIA PaCa-2 cells for 48 hours downregulated the expression levels of FASN and SCD enzymes, both at the transcriptional (Fig 3A) and at the post-transcriptional levels (Fig 4A).

We obtained similar results after Yarrow SFE treatment in PANC-1, a pancreatic cancer cell line which has been described to be more chemo and radio-resistant, compared to MIA PaCa-2 cells [87,88]. Fig 3B shows a significant downregulation of the mRNA expression levels of SREBP1, FASN and SCD in PANC-1 pancreatic cancer cell line, and Fig 4B shows a tendency towards a reduction in the protein expression levels of FASN and SCD.

The effect of Yarrow SFE on SREBF1 downregulation seems to be highly specific, as similar results were obtained in other cancer types, such as in SW-620, a colon cancer cell line (S2 Fig).

Yarrow SFE diminishes intracellular lipid content and cell invasion

Tumor cell invasion is an important read-out of the aggressiveness and metastatic potential of cancer cells. In this regard, it has been described a link between FASN downregulation and the reduction of invasion in cancer [84,89]. Thus, next we aimed to investigate the ability of Yarrow SFE to affect the invasion capabilities of MIA PaCa-2 cells through Matrigel-coated chambers. After 48 hours of exposition to Yarrow SFE extract, cells which still alive were placed onto a Matrigel chamber and those invading the matrix towards the lower chamber were monitored. Yarrow SFE treatment significantly reduced the number of cells that passed through Matrigel in a dose-dependent manner, with a reduction of the invading cells of a 50% and 80% after treatment with 30 and 70 $\mu\text{g}/\text{mL}$ of the extract, respectively, compared to control non-treated cells (DMSO) (Fig 5A). To further assess the impact of Yarrow SFE in intracellular lipid metabolism, we used the Bodipy fluorophore, a specific dye for cellular neutral lipid droplets content. As shown in Fig 5B, MiaPaca-2 treated cells with Yarrow SFE were less prone to neutral lipid droplets accumulation compared to control non-treated cells (DMSO). These results suggest that alterations in lipid homeostasis impact on signaling pathways implicated in invasion.

Yarrow-SFE inhibits the growth of pancreatic tumor xenografts in athymic nude mice

As we have previously shown *in vitro*, antitumoral effects of Yarrow SFE on pancreatic cancer cells reduce cell viability, inhibit tridimensional cell growth, and induce apoptosis [22]. As here we found an inhibition of invasion and a reduced expression of molecular targets implicated in FA and cholesterol homeostasis, we aimed to investigate whether Yarrow SFE could inhibit *in vivo* the tumor growth of pancreatic cancer cells using a xenograft mouse model.

With this purpose, we injected 1.5×10^6 of MIA PaCa-2 cells subcutaneously in nude mice. Tumor volume was measured three times per week from the day of inoculation. When tumors reached an average volume of 100 mm^3 , mice were treated with 1000 mg/kg Yarrow 3 times per week. As shown in Fig 6A, tumor growth was reduced in Yarrow SFE treated animals compared to control animals (corn oil) being statistically significant after 10 days of treatment.

Tumor weights at the end of the experiment showed significant reduced values in Yarrow SFE treated mice compared to control animals (Fig 6B). Importantly, we did not find differences regardless body weights nor liver weights (Fig 6C and 6D).

At the end of the experiment, Yarrow SFE treated mice presented a tumor volume reduction of 28.69% ($P < 0.05$) compared to the control ones (corn oil). Ki-67 staining showed a decrease in the number of Ki-67 positive cells in the tumors of Yarrow SFE treated mice compared to control ones, indicating a reduction in proliferation of tumor cells (Fig 7A). Importantly, the expression levels of SREBF1 in the tumors of Yarrow SFE treated animals was also significantly reduced compared to control animals (Fig 7B).

Discussion

Pancreatic cancer remains one of the most uncontrollable and devastating malignant tumors due to its late diagnosis and chemo-refractory profile.

The altered metabolism in tumoral cells has been highlighted in the last years, being an important part of the metabolic reprogramming found in cancer. Lipids, in addition to their

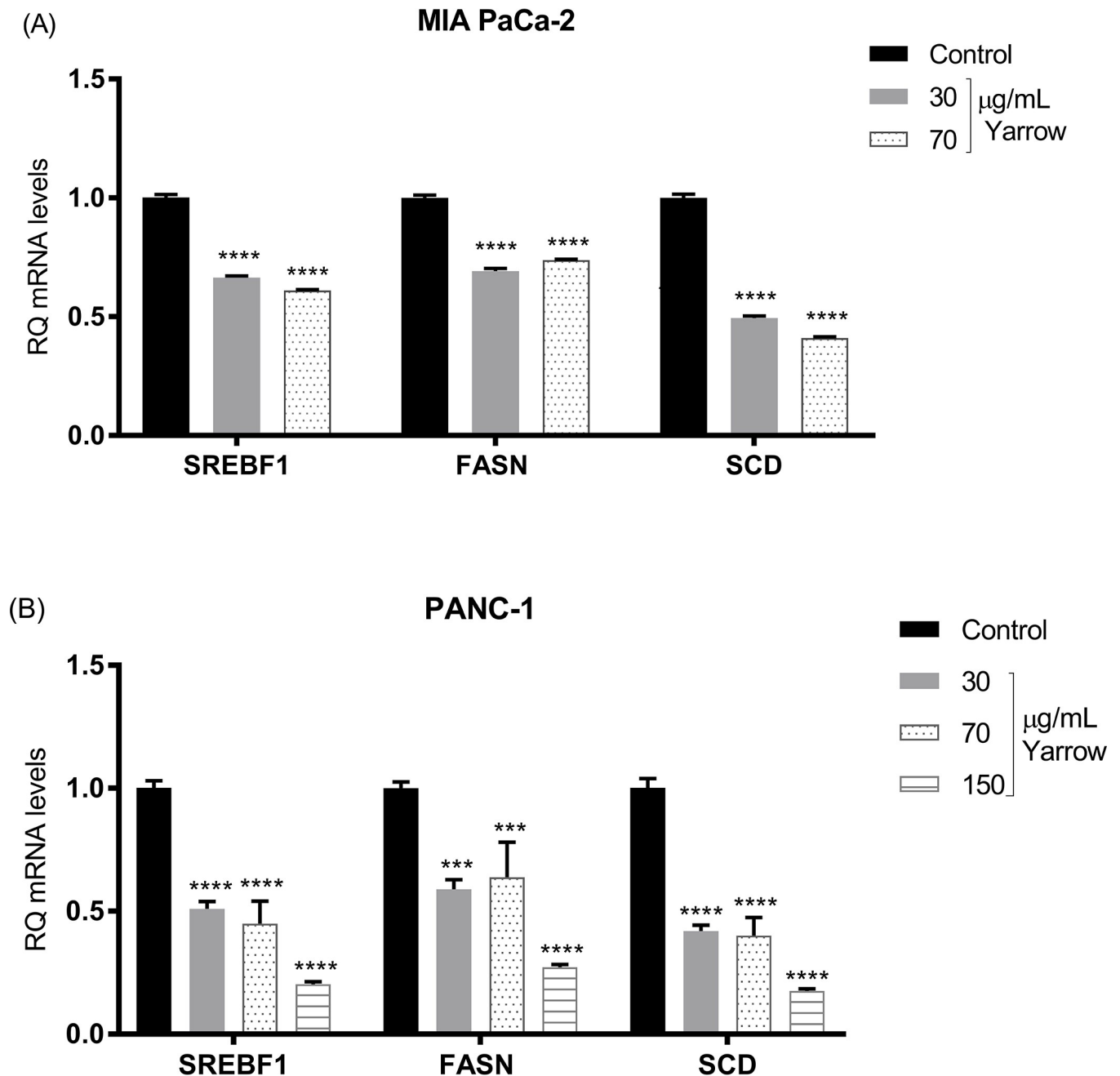


Fig 3. Yarrow SFE inhibits the expression levels of SREBP1 molecular targets FASN and SCD in MIA PaCa-2 and PANC-1 pancreatic cancer cells. (A) mRNA relative expression in human pancreatic cancer-derived MIA PaCa-2 and (B) PANC-1 cells treated 48 hours with different concentrations of Yarrow extract. Data represent the mean \pm S.E.M of three independent experiments each one performed in triplicate. Asterisks indicate statistical differences in treated cells compared to control (DMSO) and *** $p < 0.001$; **** $p < 0.0001$.

<https://doi.org/10.1371/journal.pone.0214294.g003>

role as fuels for ATP production, they play a key role as components of plasmatic and organelles membranes, affecting their plasticity, and are also important as cell signaling molecules. Lipid metabolism alterations have been related to an increase in tumor progression and malignancy. In this regard, SREBP proteins, which are master regulators of lipid metabolism, together with FASN and SCD have been found to be upregulated in several neoplasia.

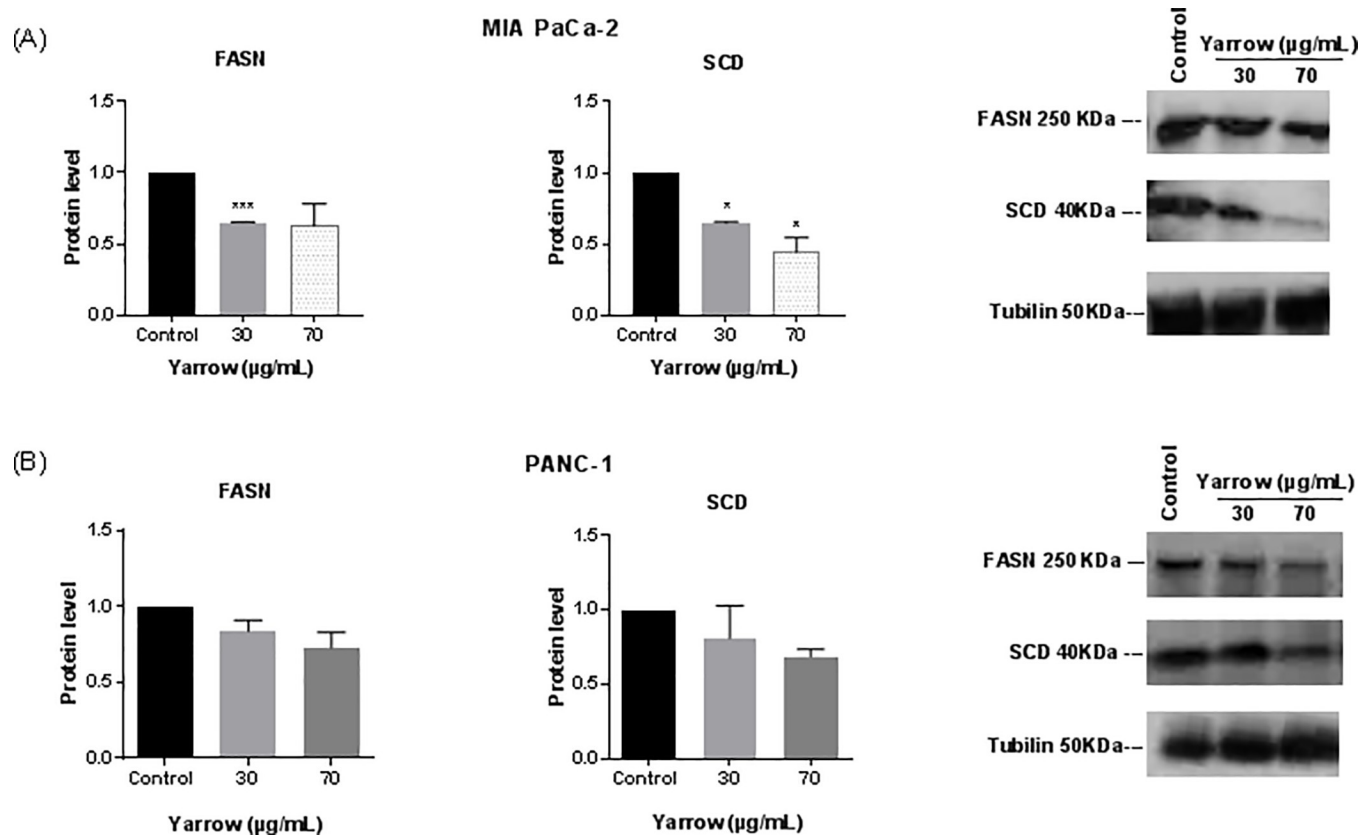


Fig 4. Yarrow SFE extract diminishes FASN and SCD protein levels in MIA PaCa-2 and PANC-1 pancreatic cancer cells. (A) Western blot protein analysis and quantification of FASN and SCD in MIA PaCa-2 and (B) in PANC-1 cell lines treated with Yarrow SFE extracts for 48 hours. Bar data represents the mean \pm S.E.M of three independent experiments each one performed in duplicate, and bands are representative of one experiment. Asterisks indicate statistical differences in treated compared to non-treated cells * p <0.05; *** p <0.001.

<https://doi.org/10.1371/journal.pone.0214294.g004>

Regardless pancreatic cancer, alterations in lipid metabolism have been also described, such as the increase of *de novo* lipogenesis, which supports tumor growth and malignancy [75,84] and correlates with poorer prognosis in clinics [90].

In this scenario, new approaches to target the altered lipid metabolism in cancer are required to improve cancer patient's survival. Plant-derived products are a source of bioactive compounds with a reduced toxicity that have great potential in the treatment of chronic diseases conditions including obesity, metabolic syndrome, type 2 diabetes, cardiovascular diseases and cancer [91,92]. Conventional strategies of pharmaceutical industries are focused on isolating pure components as a treatment approach, but plant derived extracts are of great interest because they are composed by several bioactive phytochemicals, as well as because they can act synergistically and target several genes.

In this context, we recently have investigated the antitumoral properties of Yarrow SFE extract (obtained by supercritical fluid extraction -SFE-). Yarrow SFE diminished cell viability of pancreatic cancer cell lines by induction of apoptosis. Moreover, it reduced the ability of these cells to grow and to form colonies in Matrigel. Importantly, Yarrow SFE extract synergized with the antimetabolite 5-fluororacil which is currently used in clinics to treat pancreatic tumors, making the treatment more effective [22].

Herein, by microarray gene expression analysis of MIA PaCa-2 cells treated with Yarrow SFE (at 30 and 70 μ g/mL), we identify SREBF1 transcription factor as a direct molecular target

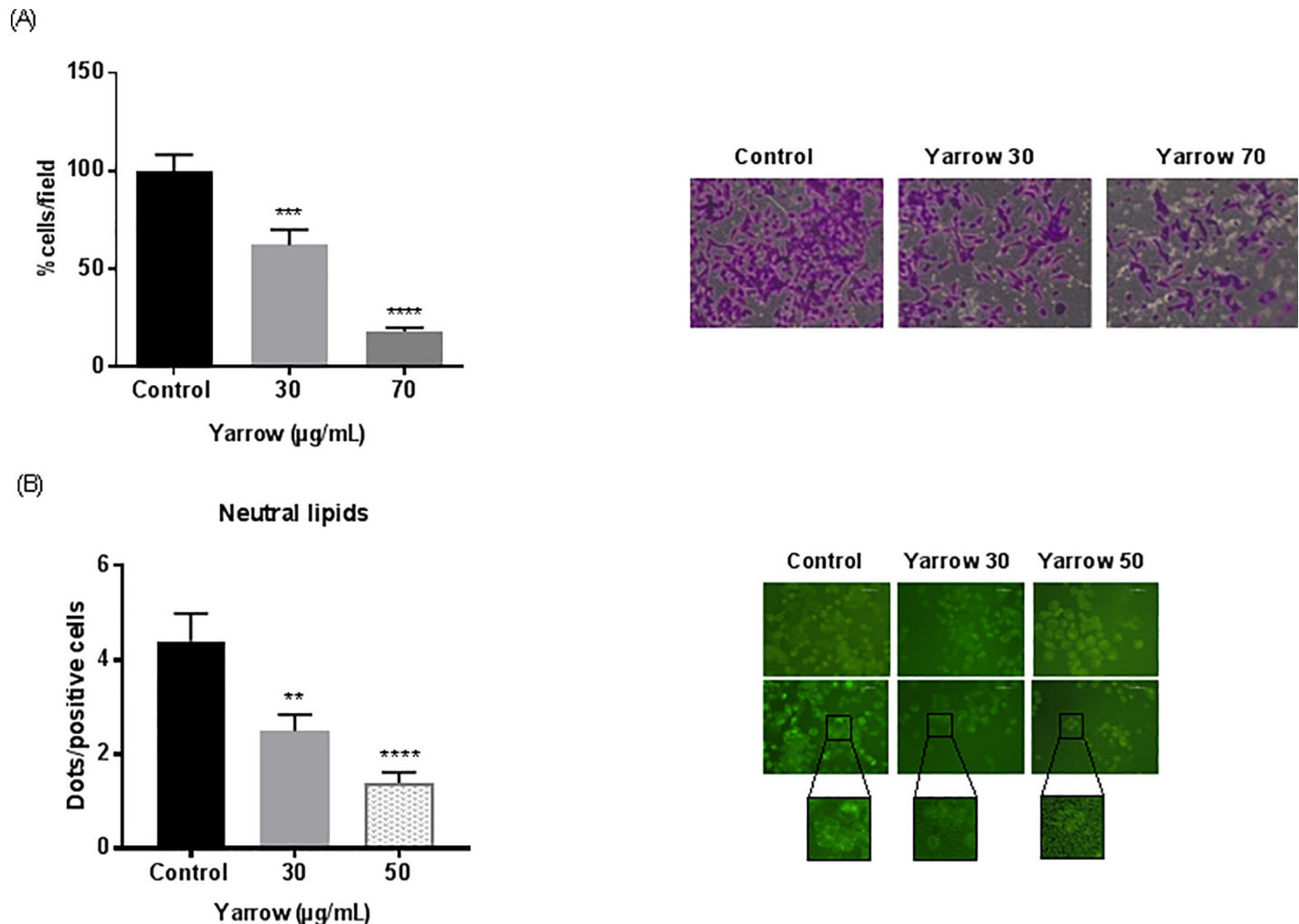


Fig 5. Yarrow SFE extract reduces MIA PaCa-2 cell invasion and intracellular neutral lipid content. (A) Quantification of cells invading through Matrigel-coated chambers after 48h of treatment with Yarrow SFE compared to non-treated control cells (DMSO). Data represent mean \pm S.E.M of three independent experiments each one performed in duplicate. (B) Representative immunofluorescence images of the fluorophore Bodipy distribution in MIA PaCa-2 treated cells with Yarrow SFE and non-treated cells, carried out twice. Asterisks indicate statistical differences between Yarrow SFE treated cells compared to non-treated cells (** $p < 0.01$; *** $p < 0.001$; **** $p < 0.001$).

<https://doi.org/10.1371/journal.pone.0214294.g005>

of the extract. The same tendency is found in another pancreatic cancer cell line, PANC-1, which has been reported to be a more aggressive [93]. Yarrow SFE targets similarly SREBF1a and SREBF1c isoforms, but does not significantly downregulate the expression of SREBF2.

SREBP1c binds to the promoter of genes such as FASN (Fatty Acid Synthase), SCD (Stearoyl-CoA Desaturase) or ACC (Acetyl-CoA carboxylase) [94–96], which are essential players for *de novo* synthesis of fatty acids or lipogenesis.

In pancreatic cancer, it has been shown that SREBP1 expression is significantly higher in tumoral tissue compared to adjacent normal tissue. In addition, the aberrant expression of this gene predicts worst prognosis [75]. SREBP1 levels are also increased in other types of cancer, such as prostate, liver, or endometrial tumors, conferring them higher invasion and metastatic capacities [70,73,74]. Thus, SREBP1 has been proposed by several authors as a potential therapeutic target in cancer treatment [82]. In pancreatic cancer cells (PANC-1, P \times PC3 and SW1990), SREBP1 silencing reduced proliferation and colony formation. Moreover, SREBF1

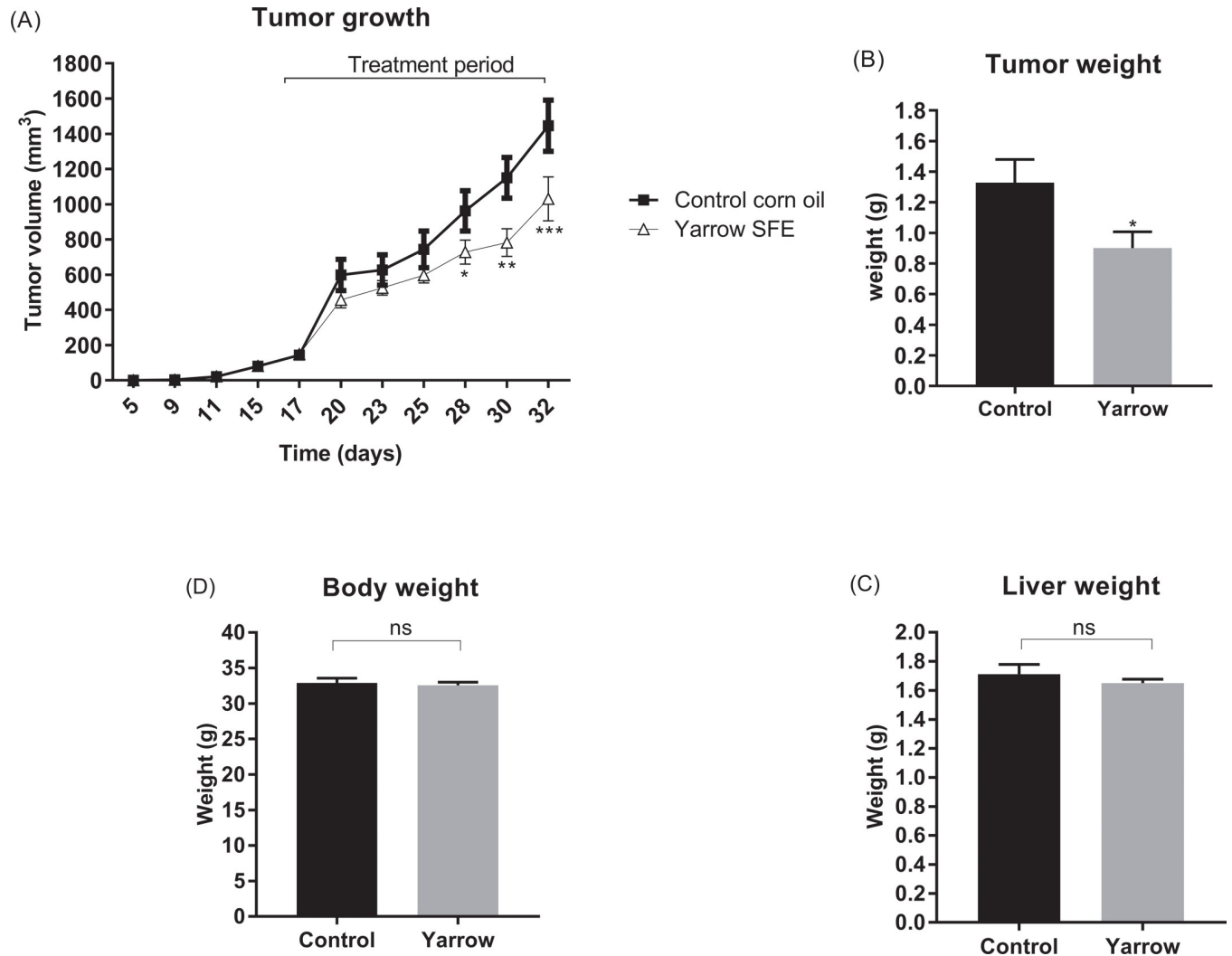


Fig 6. Yarrow SFE diminishes the growth of MIA PaCa-2 tumor xenograft in nude mice. (A) Tumor volume evolution of MIA PaCa-2 xenografts treated with Yarrow SFE extract compared to non-treated control mice (corn oil). (B) Tumor weight, (C) Liver weight and (D) Total body weight quantification at the end of the experiment. Data represents the mean \pm S.E.M for 8 treated animals and 8 controls. Asterisks indicate statistical differences in treated with respect to non-treated mice * $p < 0.05$; ** $p < 0.01$; *** $p < 0.001$.

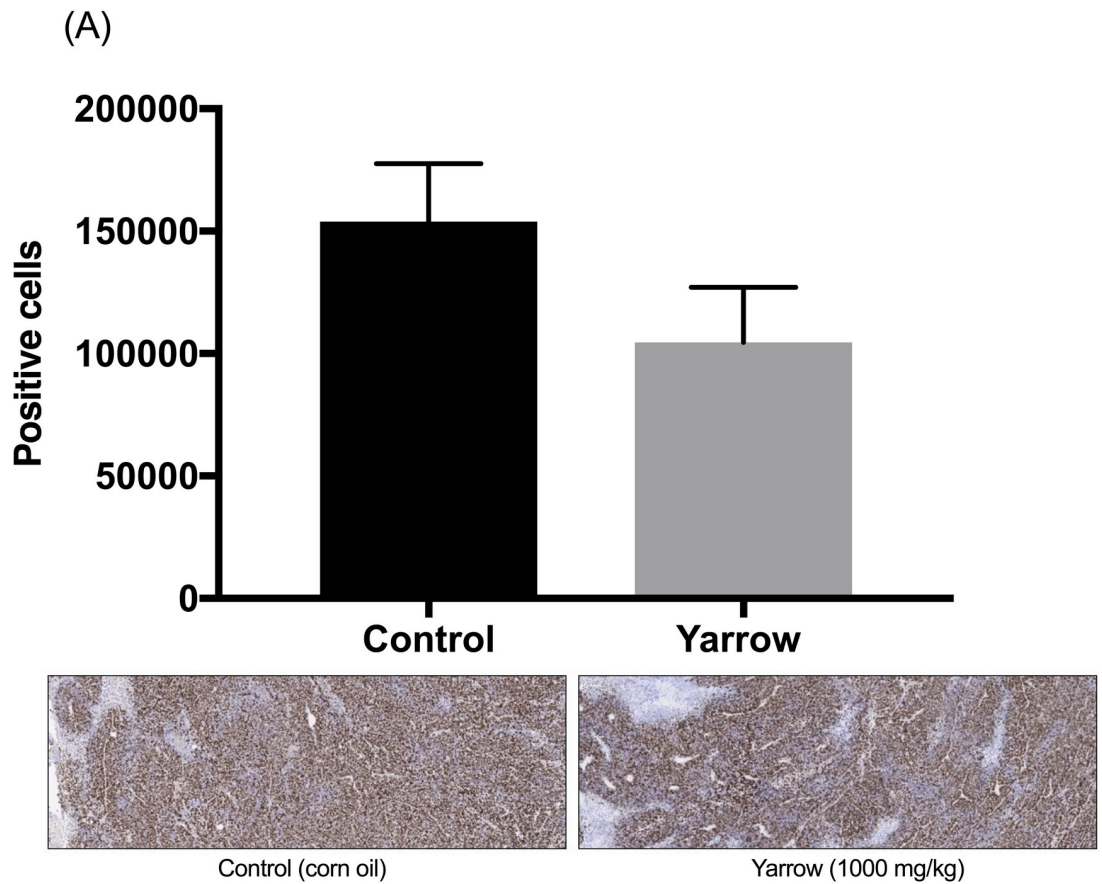
<https://doi.org/10.1371/journal.pone.0214294.g006>

silencing diminished the expression of key growth- and apoptosis-regulating genes such as FASN, SCD, TP53, ACC, that results in the decrease of intracellular lipid content and apoptosis [97]. These results are similar to ours after Yarrow SFE treatments, where there is a reduction of SREBF1 expression levels together with an inhibition of invasion and induction of apoptosis (caspase activation). In addition, we have previously shown that Yarrow SFE is more selective against cancer cell lines than normal cells [22]. As cancer cells present higher expression of SREBF1 than normal cells [75], the observed effect of Yarrow SFE on SREBF1 could explain the specificity against tumor cells, being normal cells more protected.

In patients, together with SREBP1, FASN and SCD are also considered worse prognosis markers. These genes are also diminished in MIA PaCa-2 cells after Yarrow SFE treatments.

In the same way, FASN has been shown to be upregulated in several cancers [16,84], including pancreatic cancer [98,99]. High serum levels of FASN are associated with aggressiveness [98,100] and resistance to the chemotherapeutic gemcitabine [101,102].

Xenograft Tumors/Ki-67



(B) Xenograft Tumors/SREBF1

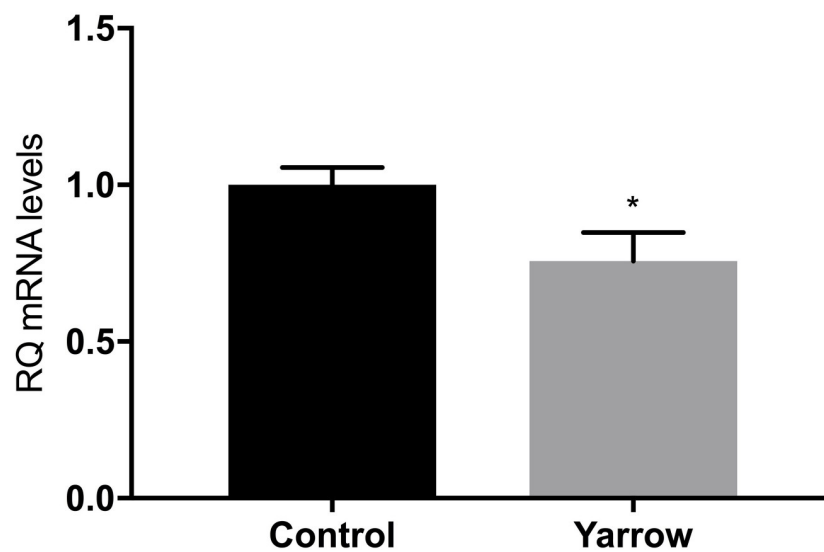


Fig 7. Yarrow SFE diminishes pancreatic cancer cell proliferation in tumor xenografts and SREBF1 expression. (A) Representative images of Ki-67 immunostaining and Ki-67 quantification at the end of the experiment. (B) SREBF1 expression levels in tumors of Yarrow SFE treated mice compared to non-treated control mice (corn oil). Data represent the mean \pm S.E.M of five animals for the immunostaining and 8 animals for qPCR. Asterisks indicate statistical differences in treated animals comparing with the control (corn oil) and * $p < 0.05$.

<https://doi.org/10.1371/journal.pone.0214294.g007>

Conversely, FASN inhibition have been shown to decrease tumor growth and to drive apoptotic cell death. These cytotoxic and cytostatic effects have been validated in ovarian, prostate and pancreatic cancers [98,103,104]. In addition, FASN pharmacological blockage also synergizes with 5-fluororacil [105] to enhance apoptosis activation [76,106]. In this sense, our results match with previous ones, where Yarrow SFE extract could act as a FASN inhibitor.

Finally, regarding SCD, which catalyzes the rate limiting step in the production of monounsaturated fatty acids (MUFAs), whose levels are directly associated with replication rates in cancer cells [107]. High levels of SCD have been described to increase cell proliferation and survival in pancreatic tumors [107,108], and its inhibition has been shown to brake tumor growth in lung, colorectal, osteosarcoma and breast tumors [65–67]. Thus, being considered as a target for chemotherapy, SCD therapeutic inhibition affects tumor growth in several xenograft models (prostate, kidney, gastric or ovarian tumor [68,69]).

In the context of the use of phytochemicals for cancer treatment through a metabolic approach, genistein and ginkgolic acid have already been demonstrated to induce cytotoxicity by downregulating of SREBP1 [71,109]. Promising results have been obtained by luteolin, which also targets FASN [76].

Herein, we demonstrate that Yarrow SFE inhibits SREBF1, FASN and SCD leading to less accumulation of lipid droplets which also correlates with the inhibition of cell invasion. Further studies are needed to better understand how Yarrow SFE could disrupt cell metabolism and/or cell bioenergy through metabolomic approaches and cell bioenergetics flux analysis.

Importantly, we demonstrate the *in vivo* effect of Yarrow SFE inhibiting the tumor growth of xenografts models, which seems to be mediated, at least partially, by the downregulation of SREBP1.

In this sense, our data suggest that Yarrow SFE can be proposed as a complementary adjuvant or nutritional complement in pancreatic cancer therapy.

Conclusions

Yarrow SFE decreases pancreatic cancer cell proliferation and invasion. We identify SREBF1 together with FASN and SCD, as molecular targets of Yarrow SFE. We also demonstrate the *in vivo* effect of Yarrow SFE, which brakes tumor growth in a xenograft mouse model of pancreatic cancer, together with SREBF1 downregulation in the injected tumors. Our data suggest that Yarrow SFE can be proposed as a complementary adjuvant or nutritional supplement in pancreatic cancer therapy.

Supporting information

S1 Fig. Intracellular cholesterol levels. Relative intracellular cholesterol levels in human pancreatic cancer-derived MIA PaCa-2 (A) cells treated 48 hours two with different concentrations of Yarrow SFE extract. Data represent the mean \pm S.E.M of three independent experiments each one performed in triplicate. (TIF)

S2 Fig. Yarrow inhibits the expression of SREBF1 in SW620 colon cancer cells. Line. mRNA relative expression of SREBF1 in SW620 cells treated 48 hours with different

concentrations of Yarrow extract compared to non-treated control cells (DMSO). Data represent the mean \pm S.E.M of three independent experiment each one performed in triplicate. Asterisks indicate statistical differences in treated cells with respect to the control (non-treated cells) and * $p < 0.05$ ** $p < 0.01$; *** $p < 0.001$.
(TIF)

Acknowledgments

We thank Dr. Jean-Baptiste Demoulin for having provided us the anti-SCD1 antibody.

Author Contributions

Conceptualization: Lamia Mouhid, Marta Gómez de Cedrón, Guillermo Reglero, Tiziana Fornari, Ana Ramírez de Molina.

Formal analysis: Lamia Mouhid.

Investigation: Lamia Mouhid, Marta Gómez de Cedrón.

Methodology: Lamia Mouhid, Marta Gómez de Cedrón.

Resources: Elena García-Carrascosa.

Supervision: Marta Gómez de Cedrón, Ana Ramírez de Molina.

Writing – original draft: Lamia Mouhid, Marta Gómez de Cedrón.

References

1. Michaud DS. Epidemiology of Pancreatic Cancer. Springer; 2017. pp. 471–487.
2. Gordon-Dseagu VL, Devesa S, Goggins M, Stolzenberg-Solomon R. No Title. Pancreat cancer Incid trends Recent patterns overall by Histol type among US men women by racial/ethnic Gr Evid from Surveillance, Epidemiol End Results Progr. 2017;
3. Surh Y-J. Cancer chemoprevention with dietary phytochemicals. *Nat Rev Cancer*. 2003; 3: 768–780. <https://doi.org/10.1038/nrc1189> PMID: 14570043
4. Mouhid L, Corzo-Martínez M, Torres C, Vázquez L, Reglero G, Fornari T, et al. Improving In Vivo Efficacy of Bioactive Molecules: An Overview of Potentially Antitumor Phytochemicals and Currently Available Lipid-Based Delivery Systems. *J Oncol*. 2017;2017.
5. Kotecha R, Takami A, Espinoza JL. Dietary phytochemicals and cancer chemoprevention: a review of the clinical evidence. *Oncotarget*. 2016; 7: 52517–52529. <https://doi.org/10.18632/oncotarget.9593> PMID: 27232756
6. Gonzalez-Vallinas M, Gonzalez-Castejon M, Rodriguez-Casado A, de Molina AR. Dietary phytochemicals in cancer prevention and therapy: a complementary approach with promising perspectives. *Nutr Rev*. 2013; 71: 585–599. <https://doi.org/10.1111/nure.12051> PMID: 24032363
7. Cragg GM, Newman DJ. Plants as a source of anti-cancer agents. *J Ethnopharmacol*. 2005; 100: 72–79. <https://doi.org/10.1016/j.jep.2005.05.011> PMID: 16009521
8. Ouyang L, Luo Y, Tian M, Zhang S, Lu R, Wang J, et al. Plant natural products: from traditional compounds to new emerging drugs in cancer therapy. *Cell Prolif*. 2014; 47: 506–515. <https://doi.org/10.1111/cpr.12143> PMID: 25377084
9. Hidalgo M. Pancreatic cancer. *N Engl J Med*. 2010; 362: 1605–1617. <https://doi.org/10.1056/NEJMra0901557> PMID: 20427809
10. Hanahan D, Weinberg RA. Hallmarks of cancer: the next generation. *Cell*. 2011; 144: 646–674. <https://doi.org/10.1016/j.cell.2011.02.013> PMID: 21376230
11. DeBerardinis RJ, Lum JJ, Hatzivassiliou G, Thompson CB. The biology of cancer: metabolic reprogramming fuels cell growth and proliferation. *Cell Metab*. 2008; 7: 11–20. <https://doi.org/10.1016/j.cmet.2007.10.002> PMID: 18177721
12. Hensley CT, Wasti AT, DeBerardinis RJ. Glutamine and cancer: cell biology, physiology, and clinical opportunities. *J Clin Invest*. 2013; 123: 3678–3684. <https://doi.org/10.1172/JCI69600> PMID: 23999442

13. Blum R, Kloog Y. Metabolism addiction in pancreatic cancer. *Cell Death Dis.* 2014; 5: e1065. <https://doi.org/10.1038/cddis.2014.38> PMID: 24556680
14. Wise DR, Thompson CB. Glutamine addiction: a new therapeutic target in cancer. *Trends Biochem Sci.* 2010; 35: 427–433. <https://doi.org/10.1016/j.tibs.2010.05.003> PMID: 20570523
15. Medes G, Thomas A, Weinhouse S. Metabolism of neoplastic tissue. IV. A study of lipid synthesis in neoplastic tissue slices in vitro. *Cancer Res.* 1953; 13: 27–29. PMID: 13032945
16. Currie E, Schulze A, Zechner R, Walther TC, Farese R V. Cellular fatty acid metabolism and cancer. *Cell Metab.* 2013; 18: 153–161. <https://doi.org/10.1016/j.cmet.2013.05.017> PMID: 23791484
17. Vargas T, Moreno-Rubio J, Herranz J, Cejas P, Molina S, Gonzalez-Vallinas M, et al. ColoLipidGene: signature of lipid metabolism-related genes to predict prognosis in stage-II colon cancer patients. *Oncotarget.* 2015; 6: 7348–7363. <https://doi.org/10.18632/oncotarget.3130> PMID: 25749516
18. Fan TWM, Lane AN, Higashi RM, Farag MA, Gao H, Bousamra M, et al. Altered regulation of metabolic pathways in human lung cancer discerned by ¹³C stable isotope-resolved metabolomics (SIRM). *Mol Cancer.* 2009; 8: 41. <https://doi.org/10.1186/1476-4598-8-41> PMID: 19558692
19. Beloribi-Djefafia S, Vasseur S, Guillaumond F. Lipid metabolic reprogramming in cancer cells. *Oncogenesis.* 2016; 5: e189. <https://doi.org/10.1038/oncsis.2015.49> PMID: 26807644
20. Peck B, Schulze A. Lipid desaturation—the next step in targeting lipogenesis in cancer? *FEBS J.* 2016; 283: 2767–2778. <https://doi.org/10.1111/febs.13681> PMID: 26881388
21. García-Risco MR, Mouhid L, Salas-Pérez L, López-Padilla A, Santoyo S, Jaime L, et al. Biological Activities of Asteraceae (*Achillea millefolium* and *Calendula officinalis*) and Lamiaceae (*Melissa officinalis* and *Origanum majorana*) Plant Extracts. *Plant Foods Hum Nutr.* 2017; 72: 96–102. <https://doi.org/10.1007/s11130-016-0596-8> PMID: 28101823
22. Mouhid L, de Cedrón MG, Vargas T, García-Carrascosa E, Muñoz NH, García-Risco MR, et al. Identification of antitumoral agents against human pancreatic cancer cells from Asteraceae and Lamiaceae plant extracts. 2018; *BMC Comple.* <https://doi.org/10.1186/s12906-018-2322-6> PMID: 30223811
23. Livak KJ, Schmittgen TD. Analysis of relative gene expression data using real-time quantitative PCR and the 2⁻ΔΔCT method. *methods.* 2001; 25: 402–408. <https://doi.org/10.1006/meth.2001.1262> PMID: 11846609
24. Demoulin JB, Ericsson J, Kallin A, Rorsman C, Ronnstrand L, Heldin CH. Platelet-derived growth factor stimulates membrane lipid synthesis through activation of phosphatidylinositol 3-kinase and sterol regulatory element-binding proteins. *J Biol Chem.* 2004; 279: 35392–35402. <https://doi.org/10.1074/jbc.M405924200> PMID: 15213220
25. Kim RH, Coates JM, Bowles TL, McNerney GP, Sutcliffe J, Jung JU, et al. Arginine deiminase as a novel therapy for prostate cancer induces autophagy and caspase-independent apoptosis. *Cancer Res.* 2009; 69: 700–708. <https://doi.org/10.1158/0008-5472.CAN-08-3157> PMID: 19147587
26. Phillips MM, Sheaff MT, Szlosarek PW. Targeting arginine-dependent cancers with arginine-degrading enzymes: opportunities and challenges. *Cancer Res Treat.* 2013; 45: 251–262. <https://doi.org/10.4143/crt.2013.45.4.251> PMID: 24453997
27. Sullivan LB, Gui DY, Heiden MG Vander. Altered metabolite levels in cancer: implications for tumour biology and cancer therapy. *Nat Rev Cancer.* 2016; 16: 680–693. <https://doi.org/10.1038/nrc.2016.85> PMID: 27658530
28. Bowles TL, Kim R, Galante J, Parsons CM, Virudachalam S, Kung H, et al. Pancreatic cancer cell lines deficient in argininosuccinate synthetase are sensitive to arginine deprivation by arginine deiminase. *Int J cancer.* 2008; 123: 1950–1955. <https://doi.org/10.1002/ijc.23723> PMID: 18661517
29. Liu J, Ma J, Wu Z, Li W, Zhang D, Han L, et al. Arginine deiminase augments the chemosensitivity of argininosuccinate synthetase-deficient pancreatic cancer cells to gemcitabine via inhibition of NF-κB signaling. *BMC Cancer.* 2014; 14: 1. <https://doi.org/10.1186/1471-2407-14-1>
30. Qiu F, Huang J, Sui M. Targeting arginine metabolism pathway to treat arginine-dependent cancers. *Cancer Lett.* 2015; 364: 1–7. <https://doi.org/10.1016/j.canlet.2015.04.020> PMID: 25917076
31. Kolla V, Zhuang T, Higashi M, Naraparaju K, Brodeur GM. Role of CHD5 in human cancers: 10 years later. *Cancer Res.* 2014; 74: 652–658. <https://doi.org/10.1158/0008-5472.CAN-13-3056> PMID: 24419087
32. Bagchi A, Papazoglu C, Wu Y, Capurso D, Brodt M, Francis D, et al. CHD5 is a tumor suppressor at human 1p36. *Cell.* 2007; 128: 459–475. <https://doi.org/10.1016/j.cell.2006.11.052> PMID: 17289567
33. Zhao R, Yan Q, Lv J, Huang H, Zheng W, Zhang B, et al. CHD5, a tumor suppressor that is epigenetically silenced in lung cancer. *Lung cancer.* 2012; 76: 324–331. <https://doi.org/10.1016/j.lungcan.2011.11.019> PMID: 22186629
34. Hall WA, Petrova A V, Colbert LE, Hardy CW, Fisher SB, Saka B, et al. Low CHD5 expression activates the DNA damage response and predicts poor outcome in patients undergoing adjuvant therapy

- for resected pancreatic cancer. *Oncogene*. 2014; 33: 5450–5456. <https://doi.org/10.1038/onc.2013.488> PMID: 24276239
35. Zhang R, Thamm DH, Misra V. The effect of Zhangfei/CREBZF on cell growth, differentiation, apoptosis, migration, and the unfolded protein response in several canine osteosarcoma cell lines. *BMC Vet Res*. 2015; 11: 1. <https://doi.org/10.1186/s12917-014-0312-6> PMID: 25582057
 36. López-Mateo I, Villaronga MÁ, Llanos S, Belandia B. The transcription factor CREBZF is a novel positive regulator of p53. *Cell Cycle*. 2012; 11: 3887–3895. <https://doi.org/10.4161/cc.22133> PMID: 22983008
 37. Rozenblatt-Rosen O, Nagaïke T, Francis JM, Kaneko S, Glatt KA, Hughes CM, et al. The tumor suppressor Cdc73 functionally associates with CPSF and CstF 3' mRNA processing factors. *Proc Natl Acad Sci U S A*. 2009; 106: 755–760. <https://doi.org/10.1073/pnas.0812023106> PMID: 19136632
 38. Rather MI, Nagashri MN, Swamy SS, Gopinath KS, Kumar A. Oncogenic microRNA-155 down-regulates tumor suppressor CDC73 and promotes oral squamous cell carcinoma cell proliferation: implications for cancer therapeutics. *J Biol Chem*. 2013; 288: 608–618. <https://doi.org/10.1074/jbc.M112.425736> PMID: 23166327
 39. Kirschner RD, Rother K, Müller GA, Engeland K. The retinal dehydrogenase/reductase retSDR1/DHRS3 gene is activated by p53 and p63 but not by mutants derived from tumors or EEC/ADULT malformation syndromes. *Cell Cycle*. 2010; 9: 2177–2188. <https://doi.org/10.4161/cc.9.11.11844> PMID: 20543567
 40. Deisenroth C, Itahana Y, Tollini L, Jin A, Zhang Y. p53-Inducible DHRS3 is an endoplasmic reticulum protein associated with lipid droplet accumulation. *J Biol Chem*. 2011; 286: 28343–28356. <https://doi.org/10.1074/jbc.M111.254227> PMID: 21659514
 41. Yan W-H. HLA-G expression in cancers: potential role in diagnosis, prognosis and therapy. *Endocrine, Metab Immune Disord Targets (Formerly Curr Drug Targets-Immune, Endocr Metab Disord)*. 2011; 11: 76–89.
 42. Cao M, Yie S, Liu J, Ye SR, Xia D, Gao E. Plasma soluble HLA-G is a potential biomarker for diagnosis of colorectal, gastric, esophageal and lung cancer. *Tissue Antigens*. 2011; 78: 120–128. <https://doi.org/10.1111/j.1399-0039.2011.01716.x> PMID: 21726203
 43. Nazemalhosseini-Mojarad E, Kuppen PJ, Zali MR. Human Leukocyte antigen-G (HLA-G) and gastrointestinal malignancy. *Gastroenterol Hepatol from bed to bench*. 2014; 7: 79–81.
 44. Hansel DE, Rahman A, Wilentz RE, Shih I, McMaster MT, Yeo CJ, et al. HLA-G upregulation in pre-malignant and malignant lesions of the gastrointestinal tract. *Int J Gastrointest Cancer*. 2005; 35: 15–23. PMID: 15722570
 45. Xu Y-F, Lu Y, Cheng H, Jiang J, Xu J, Long J, et al. High expression of human leukocyte antigen-G is associated with a poor prognosis in patients with PDAC. *Curr Mol Med*. 2015; 15: 360–367. PMID: 25829020
 46. Lee AS. GRP78 induction in cancer: therapeutic and prognostic implications. *Cancer Res*. 2007; 67: 3496–3499. 67/8/3496 [pii] <https://doi.org/10.1158/0008-5472.CAN-07-0325> PMID: 17440054
 47. Yang Z, Zhuang L, Szatmary P, Wen L, Sun H, Lu Y, et al. Upregulation of heat shock proteins (HSPA12A, HSP90B1, HSPA4, HSPA5 and HSPA6) in tumour tissues is associated with poor outcomes from HBV-related early-stage hepatocellular carcinoma. *Int J Med Sci*. 2015; 12: 256–263. <https://doi.org/10.7150/ijms.10735> PMID: 25798051
 48. Aguirre-Ghiso JA. Models, mechanisms and clinical evidence for cancer dormancy. *Nat Rev Cancer*. 2007; 7: 834–846. <https://doi.org/10.1038/nrc2256> PMID: 17957189
 49. Uckun FM, Qazi S, Ozer Z, Garner AL, Pitt J, Ma H, et al. Inducing apoptosis in chemotherapy-resistant B-lineage acute lymphoblastic leukaemia cells by targeting HSPA5, a master regulator of the anti-apoptotic unfolded protein response signalling network. *Br J Haematol*. 2011; 153: 741–752. <https://doi.org/10.1111/j.1365-2141.2011.08671.x> PMID: 21517817
 50. Zhe-Yu N, Qiao-Fei L, Meng-Yi W, Li Z, Lu-Tian Y, Quan L, et al. Changes in the Expression of Glucose-regulated Protein 78 in the Occurrence and Progression of Pancreatic Cancer in Mouse Models. *Zhongguo yi xue ke xue yuan xue bao/Acta Acad Med Sin*. 2015; 37: 259–263. <https://doi.org/10.3881/j.issn.1000-503X.2015.03.002> PMID: 26149133
 51. Yuan XP, Dong M, Li X, Zhou JP. GRP78 promotes the invasion of pancreatic cancer cells by FAK and JNK. *Mol Cell Biochem*. 2015; 398: 55–62. <https://doi.org/10.1007/s11010-014-2204-2> PMID: 25218495
 52. Djidja M-C, Claude E, Snel MF, Scriven P, Francese S, Carolan V, et al. MALDI-ion mobility separation-mass spectrometry imaging of glucose-regulated protein 78 kDa (Grp78) in human formalin-fixed, paraffin-embedded pancreatic adenocarcinoma tissue sections. *J Proteome Res*. 2009; 8: 4876–4884. <https://doi.org/10.1021/pr900522m> PMID: 19673544

53. Kammerer S, Roth RB, Reneland R, Marnellos G, Hoyal CR, Markward NJ, et al. Large-scale association study identifies ICAM gene region as breast and prostate cancer susceptibility locus. *Cancer Res.* 2004; 64: 8906–8910. 64/24/8906 [pii] <https://doi.org/10.1158/0008-5472.CAN-04-1788> PMID: [15604251](https://pubmed.ncbi.nlm.nih.gov/15604251/)
54. Maruya SI, Myers JN, Weber RS, Rosenthal DI, Lotan R, El-Naggar AK. ICAM-5 (telencephalin) gene expression in head and neck squamous carcinoma tumorigenesis and perineural invasion! *Oral Oncol.* 2005; 41: 580–588. <https://doi.org/10.1016/j.oraloncology.2005.01.002> PMID: [15975520](https://pubmed.ncbi.nlm.nih.gov/15975520/)
55. Gunduz M, Beder LB, Gunduz E, Nagatsuka H, Fukushima K, Pehlivan D, et al. Downregulation of ING3 mRNA expression predicts poor prognosis in head and neck cancer. *Cancer Sci.* 2008; 99: 531–538. <https://doi.org/10.1111/j.1349-7006.2007.00708.x> PMID: [18081876](https://pubmed.ncbi.nlm.nih.gov/18081876/)
56. Doyon Y, Cayrou C, Ullah M, Landry A-J, Côté V, Selleck W, et al. ING tumor suppressor proteins are critical regulators of chromatin acetylation required for genome expression and perpetuation. *Mol Cell.* 2006; 21: 51–64. <https://doi.org/10.1016/j.molcel.2005.12.007> PMID: [16387653](https://pubmed.ncbi.nlm.nih.gov/16387653/)
57. Zhang M, Truscott J, Davie J. Loss of MEF2D expression inhibits differentiation and contributes to oncogenesis in rhabdomyosarcoma cells. *Mol Cancer.* 2013; 12: 1. <https://doi.org/10.1186/1476-4598-12-1>
58. Ma L, Liu J, Liu L, Duan G, Wang Q, Xu Y, et al. Overexpression of the transcription factor MEF2D in hepatocellular carcinoma sustains malignant character by suppressing G2-M transition genes. *Cancer Res.* 2014; 74: 1452–1462. <https://doi.org/10.1158/0008-5472.CAN-13-2171> PMID: [24390737](https://pubmed.ncbi.nlm.nih.gov/24390737/)
59. Song L, Li D, Zhao Y, Gu Y, Zhao D, Li X, et al. miR-218 suppressed the growth of lung carcinoma by reducing MEF2D expression. *Tumor Biol.* 2016; 37: 2891–2900.
60. Turk CM, Fagan-Solis KD, Williams KE, Gozgit JM, Smith-Schneider S, Marconi SA, et al. Paralemm-1 is over-expressed in estrogen-receptor positive breast cancers. *Cancer Cell Int.* 2012; 12: 1. <https://doi.org/10.1186/1475-2867-12-1>
61. Albrecht I, Bieri R, Leu A, Granacher P, Hagmann J, Kilimann MW, et al. Paralemm-1 is expressed in lymphatic endothelial cells and modulates cell migration, cell maturation and tumor lymphangiogenesis. *Angiogenesis.* 2013; 16: 795–807. <https://doi.org/10.1007/s10456-013-9356-7> PMID: [23709172](https://pubmed.ncbi.nlm.nih.gov/23709172/)
62. Subramani D, Alahari SK. Integrin-mediated function of Rab GTPases in cancer progression. *Mol Cancer.* 2010; 9: 1. <https://doi.org/10.1186/1476-4598-9-1>
63. Kloth JN, Gorter A, Fleuren GJ, Oosting J, Uljee S, Haar N Ter, et al. Elevated expression of SerpinA1 and SerpinA3 in HLA-positive cervical carcinoma. *J Pathol.* 2008; 215: 222–230. <https://doi.org/10.1002/path.2347> PMID: [18438953](https://pubmed.ncbi.nlm.nih.gov/18438953/)
64. Dimberg J, Ström K, Löfgren S, Zar N, Hugander A, Matussek A. Expression of the serine protease inhibitor serpinA3 in human colorectal adenocarcinomas. *Oncol Lett.* 2011; 2: 413–418. <https://doi.org/10.3892/ol.2011.280> PMID: [22866096](https://pubmed.ncbi.nlm.nih.gov/22866096/)
65. Choi KY, Cho YJ, Kim JS, Ahn Y-H, Hong SH. SHC1 sensitizes cancer cells to the 8-Cl-cAMP treatment. *Biochem Biophys Res Commun.* 2015; 463: 673–678. <https://doi.org/10.1016/j.bbrc.2015.05.123> PMID: [26043699](https://pubmed.ncbi.nlm.nih.gov/26043699/)
66. Hamada S, Masamune A, Miura S, Satoh K, Shimosegawa T. MiR-365 induces gemcitabine resistance in pancreatic cancer cells by targeting the adaptor protein SHC1 and pro-apoptotic regulator BAX. *Cell Signal.* 2014; 26: 179–185. <https://doi.org/10.1016/j.cellsig.2013.11.003> PMID: [24216611](https://pubmed.ncbi.nlm.nih.gov/24216611/)
67. Kuranami S, Yokobori T, Mogi A, Altan B, Yajima T, Onozato R, et al. Src kinase-associated phosphoprotein2 expression is associated with poor prognosis in non-small cell lung cancer. *Anticancer Res.* 2015; 35: 2411–2415. 35/4/2411 [pii] PMID: [25862907](https://pubmed.ncbi.nlm.nih.gov/25862907/)
68. Tanaka M, Shimamura S, Kuriyama S, Maeda D, Goto A, Aiba N. SKAP2 Promotes Podosome Formation to Facilitate Tumor-Associated Macrophage Infiltration and Metastatic Progression. *Cancer Res.* 2016; 76: 358–369. <https://doi.org/10.1158/0008-5472.CAN-15-1879> PMID: [26577701](https://pubmed.ncbi.nlm.nih.gov/26577701/)
69. Harada T, Chelala C, Bhakta V, Chaplin T, Caulee K, Baril P, et al. Genome-wide DNA copy number analysis in pancreatic cancer using high-density single nucleotide polymorphism arrays. *Oncogene.* 2008; 27: 1951–1960. <https://doi.org/10.1038/sj.onc.1210832> PMID: [17952125](https://pubmed.ncbi.nlm.nih.gov/17952125/)
70. Huang WC, Li X, Liu J, Lin J, Chung LW. Activation of androgen receptor, lipogenesis, and oxidative stress converged by SREBP-1 is responsible for regulating growth and progression of prostate cancer cells. *Mol Cancer Res.* 2012; 10: 133–142. <https://doi.org/10.1158/1541-7786.MCR-11-0206> PMID: [22064655](https://pubmed.ncbi.nlm.nih.gov/22064655/)
71. Eberhard Y, Gronda M, Hurren R, Datti A, MacLean N, Ketela T, et al. Inhibition of SREBP1 sensitizes cells to death ligands. *Oncotarget.* 2011; 2: 186–196. <https://doi.org/10.18632/oncotarget.239> PMID: [21406729](https://pubmed.ncbi.nlm.nih.gov/21406729/)

72. Lin L, Zheng X, Qiu C, Dongol S, Lv Q, Jiang J, et al. SIRT1 promotes endometrial tumor growth by targeting SREBP1 and lipogenesis. *Oncol Rep*. 2014; 32: 2831–2835. <https://doi.org/10.3892/or.2014.3521> PMID: 25270091
73. Li W, Tai Y, Zhou J, Gu W, Bai Z, Zhou T, et al. Repression of endometrial tumor growth by targeting SREBP1 and lipogenesis. *Cell cycle*. 2012; 11: 2348–2358. <https://doi.org/10.4161/cc.20811> PMID: 22672904
74. Li C, Yang W, Zhang J, Zheng X, Yao Y, Tu K, et al. SREBP-1 has a prognostic role and contributes to invasion and metastasis in human hepatocellular carcinoma. *Int J Mol Sci*. 2014; 15: 7124–7138. <https://doi.org/10.3390/ijms15057124> PMID: 24776759
75. Sun Y, He W, Luo M, Zhou Y, Chang G, Ren W, et al. SREBP1 regulates tumorigenesis and prognosis of pancreatic cancer through targeting lipid metabolism. *Tumor Biol*. 2015; 1–9. <https://doi.org/10.1007/s13277-015-3047-5> PMID: 25589463
76. Li J, Gu D, Lee SSY, Song B, Bandyopadhyay S, Chen S, et al. Abrogating cholesterol esterification suppresses growth and metastasis of pancreatic cancer. *Oncogene*. 2016;
77. Xing Y, Meng Q, Chen X, Zhao Y, Liu W, Hu J, et al. TRIM44 promotes proliferation and metastasis in nonsmall cell lung cancer via mTOR signaling pathway. *Oncotarget*. 2016; <https://doi.org/10.18632/oncotarget.8586> PMID: 27058415
78. Kashimoto K, Komatsu S, Ichikawa D, Arita T, Konishi H, Nagata H, et al. Overexpression of TRIM44 contributes to malignant outcome in gastric carcinoma. *Cancer Sci*. 2012; 103: 2021–2026. <https://doi.org/10.1111/j.1349-7006.2012.02407.x> PMID: 22862969
79. Ong CA, Shannon NB, Ross-Innes CS, O'Donovan M, Rueda OM, Hu DE, et al. Amplification of TRIM44: pairing a prognostic target with potential therapeutic strategy. *J Natl Cancer Inst*. 2014; 106: 10.1093/jnci/dju050. <https://doi.org/10.1093/jnci/dju050> PMID: 24777112
80. Horton JD, Goldstein JL, Brown MS. SREBPs: activators of the complete program of cholesterol and fatty acid synthesis in the liver. *J Clin Invest*. 2002; 109: 1125–1131. <https://doi.org/10.1172/JCI15593> PMID: 11994399
81. Eberlé D, Hegarty B, Bossard P, Ferré P, Foufelle F. SREBP transcription factors: master regulators of lipid homeostasis. *Biochimie*. 2004; 86: 839–848. <https://doi.org/10.1016/j.biochi.2004.09.018> PMID: 15589694
82. Guo D, Bell EH, Mischel P, Chakravarti A. Targeting SREBP-1-driven lipid metabolism to treat cancer. *Curr Pharm Des*. 2014; 20: 2619–2626. PMID: 23859617
83. Cruz PM, Mo H, McConathy WJ, Sabnis N, Lacko AG. The role of cholesterol metabolism and cholesterol transport in carcinogenesis: a review of scientific findings, relevant to future cancer therapeutics. *Front Pharmacol*. 2013; 4: 119. <https://doi.org/10.3389/fphar.2013.00119> PMID: 24093019
84. Menendez JA, Lupu R. Fatty acid synthase and the lipogenic phenotype in cancer pathogenesis. *Nat Rev*. 2007; 7: 763.
85. Fleischmann M, Iynedjian PB. Regulation of sterol regulatory-element binding protein 1 gene expression in liver: role of insulin and protein kinase B/cAkt. *Biochem J*. 2000; 349: 13–17. PMID: 10861205
86. Dang C V. Rethinking the Warburg effect with Myc micromanaging glutamine metabolism. *Cancer Res*. 2010; 70: 859–862. <https://doi.org/10.1158/0008-5472.CAN-09-3556> PMID: 20086171
87. Yang Y, Liu H, Li Z, Zhao Z, Yip-Schneider M, Fan Q, et al. Role of fatty acid synthase in gemcitabine and radiation resistance of pancreatic cancers. *Int J Biochem Mol Biol*. 2011; 2: 89–98. PMID: 21331354
88. Asanuma K, Moriai R, Yajima T, Yagihashi A, Yamada M, Kobayashi D, et al. Survivin as a radioresistance factor in pancreatic cancer. *Cancer Sci*. 2000; 91: 1204–1209.
89. Long XH, Mao JH, Peng AF, Zhou Y, Huang SH, Liu ZL. Tumor suppressive microRNA-424 inhibits osteosarcoma cell migration and invasion via targeting fatty acid synthase. *Exp Ther Med*. 2013; 5: 1048–1052. <https://doi.org/10.3892/etm.2013.959> PMID: 23599729
90. Walter K, Hong SM, Nyhan S, Canto M, Fedarko N, Klein A, et al. Serum fatty acid synthase as a marker of pancreatic neoplasia. *Cancer Epidemiol Biomarkers Prev*. 2009; 18: 2380–2385. <https://doi.org/10.1158/1055-9965.EPI-09-0144> PMID: 19723916
91. Zhang Y-J, Gan R-Y, Li S, Zhou Y, Li A-N, Xu D-P, et al. Antioxidant phytochemicals for the prevention and treatment of chronic diseases. *Molecules*. 2015; 20: 21138–21156. <https://doi.org/10.3390/molecules201219753> PMID: 26633317
92. Zhang A, Sun H, Wang X. Recent advances in natural products from plants for treatment of liver diseases. *Eur J Med Chem*. 2013; 63: 570–577. <https://doi.org/10.1016/j.ejmech.2012.12.062> PMID: 23567947

93. Yin T, Wei H, Gou S, Shi P, Yang Z, Zhao G, et al. Cancer stem-like cells enriched in panc-1 spheres possess increased migration ability and resistance to gemcitabine. *Int J Mol Sci.* 2011; 12: 1595–1604. <https://doi.org/10.3390/ijms12031595> PMID: 21673909
94. Choi WI, Jeon BN, Park H, Yoo JY, Kim YS, Koh DI, et al. Proto-oncogene FBI-1 (Pokemon) and SREBP-1 synergistically activate transcription of fatty-acid synthase gene (FASN). *J Biol Chem.* 2008; 283: 29341–29354. <https://doi.org/10.1074/jbc.M802477200> PMID: 18682402
95. Griffiths B, Lewis CA, Bensaad K, Ros S, Zhang Q, Ferber EC, et al. Sterol regulatory element binding protein-dependent regulation of lipid synthesis supports cell survival and tumor growth. *Cancer Metab.* 2013; 1: 3. <https://doi.org/10.1186/2049-3002-1-3> PMID: 24280005
96. Oh SY, Park SK, Kim JW, Ahn YH, Park SW, Kim KS. Acetyl-CoA carboxylase beta gene is regulated by sterol regulatory element-binding protein-1 in liver. *J Biol Chem.* 2003; 278: 28410–28417. <https://doi.org/10.1074/jbc.M300553200> PMID: 12764144
97. Sekar S, Gopalakrishnan V, Taghibiglou C. Sterol regulatory element-binding protein 1 inhibitors decrease pancreatic cancer cell viability and proliferation. *Biochem Biophys Res Commun.* 2017; 488: 136–140. <https://doi.org/10.1016/j.bbrc.2017.05.023> PMID: 28483521
98. Swierczynski J, Hebanowska A, Sledzinski T. Role of abnormal lipid metabolism in development, progression, diagnosis and therapy of pancreatic cancer. *World J Gastroenterol.* 2014; 20: 2279–2303. <https://doi.org/10.3748/wjg.v20.i9.2279> PMID: 24605027
99. Falasca M, Kim M, Casari I. Pancreatic cancer: current research and future directions. *Biochim Biophys Acta (BBA)-Reviews Cancer.* 2016; 1865: 123–132.
100. Yabushita S, Fukamachi K, Kikuchi F, Ozaki M, Miyata K, Sukata T, et al. Twenty-one proteins up-regulated in human H-ras oncogene transgenic rat pancreas cancers are up-regulated in human pancreas cancer. *Pancreas.* 2013; 42: 1034–1039. <https://doi.org/10.1097/MPA.0b013e3182883624> PMID: 23648844
101. Yang Y, Liu H, Li Z, Zhao Z, Yip-Schneider M, Fan Q, et al. Role of fatty acid synthase in gemcitabine and radiation resistance of pancreatic cancers. *Int J Biochem Mol Biol.* 2011; 2: 89–98. PMID: 21331354
102. Wu X, Qin L, Fako V, Zhang J-T. Molecular mechanisms of fatty acid synthase (FASN)-mediated resistance to anti-cancer treatments. *Adv Biol Regul.* 2014; 54: 214–221. <https://doi.org/10.1016/j.jbior.2013.09.004> PMID: 24080588
103. Kridel SJ, Lowther WT, IV CWP. Fatty acid synthase inhibitors: new directions for oncology. *Expert Opin Investig Drugs.* 2007; 16: 1817–1829. <https://doi.org/10.1517/13543784.16.11.1817> PMID: 17970640
104. Li JN, Gorospe M, Chrest FJ, Kumaravel TS, Evans MK, Han WF, et al. Pharmacological inhibition of fatty acid synthase activity produces both cytostatic and cytotoxic effects modulated by p53. *Cancer Res.* 2001; 61: 1493–1499. PMID: 11245456
105. Vazquez-Martin A, Ropero S, Brunet J, Colomer R, Menendez JA. Inhibition of Fatty Acid Synthase (FASN) synergistically enhances the efficacy of 5-fluorouracil in breast carcinoma cells. *Oncol Rep.* 2007; 18: 973–980. PMID: 17786362
106. Zecchin KG, Rossato FA, Raposo HF, Melo DR, Alberici LC, Oliveira HCF, et al. Inhibition of fatty acid synthase in melanoma cells activates the intrinsic pathway of apoptosis. *Lab Invest.* 2011; 91: 232–240. <https://doi.org/10.1038/labinvest.2010.157> PMID: 20805790
107. Igal RA. Stearoyl-CoA desaturase-1: a novel key player in the mechanisms of cell proliferation, programmed cell death and transformation to cancer. *Carcinogenesis.* 2010; 31: 1509–1515. <https://doi.org/10.1093/carcin/bgq131> PMID: 20595235
108. Macáček J, Vecka M, Žák A, Urbánek M, Krechler T, Petruželka L, et al. Plasma fatty acid composition in patients with pancreatic cancer: correlations to clinical parameters. *Nutr Cancer.* 2012; 64: 946–955. <https://doi.org/10.1080/01635581.2012.716138> PMID: 23061902
109. Nie L-Y, Lu Q-T, Li W-H, Yang N, Dongol S, Zhang X, et al. Sterol regulatory element-binding protein 1 is required for ovarian tumor growth. *Oncol Rep.* 2013; 30: 1346–1354. <https://doi.org/10.3892/or.2013.2575> PMID: 23818099