

## OCT-guided Percutaneous Coronary Intervention in Bifurcation Lesions

Luca Longobardo,<sup>1,2</sup> Alessio Mattesini,<sup>2</sup> Serafina Valente<sup>2</sup> and Carlo Di Mario<sup>2</sup>

1. Department of Clinical and Experimental Medicine, University of Messina, Messina, Italy;

2. Interventional Structural Cardiology Division, Department of Heart, Lung and Vessels, Careggi University Hospital, Florence, Italy

### Abstract

Coronary artery bifurcation lesions remain challenging despite significant advancements in stent technology and development of specific bifurcation stenting approaches. Optical coherence tomography (OCT) is the intracoronary imaging technique with the highest resolution and can generate automatically contoured lumen areas across the variable geometry of bifurcation lesions. Knowledge of plaque severity and composition facilitates planning of the best strategy for percutaneous coronary intervention (PCI) and stenting. In particular, the provisional stent strategy preferred in this context can be modified when there is high risk of side-branch compromise at the ostium after main vessel stenting. OCT is unique because it allows the identification of the site of guide wire crossing, an important determinant of the final result. OCT can also be used to assess the procedural success of new dedicated bifurcation stent technologies and for the evaluation at follow-up of potential predictors of stent thrombosis, including stent malapposition, stent under-expansion and stent-edge dissection. Finally, the development of 3D OCT allows a better evaluation of coronary anatomy – particularly of side branch ostium that is difficult to visualise by 2D OCT – further improving the value of this technique in guiding PCI in these patients.

### Keywords

Bifurcation lesions, imaging, optical coherence tomography, percutaneous coronary intervention, stenting

**Disclosure:** The authors have no conflicts of interest to declare.

**Received:** 23 May 2018 **Accepted:** 4 October 2018 **Citation:** *Interventional Cardiology Review* 2019;14(1):5–9. **DOI:** <https://doi.org/10.15420/icr.2018.17.2>

**Correspondence:** Carlo Di Mario, Interventional Structural Cardiology Division, Department of Heart, Lung and Vessels, Careggi University Hospital, Largo Brambilla 3, 50134 Florence, Italy. E: [carlo.dimario@unifi.it](mailto:carlo.dimario@unifi.it)

**Open Access:** This work is open access under the CC-BY-NC 4.0 License which allows users to copy, redistribute and make derivative works for non-commercial purposes, provided the original work is cited correctly.

Coronary artery bifurcation lesions are treated in 15–20 % of percutaneous coronary intervention (PCI) procedures and are still plagued by worse outcomes.<sup>1</sup> This is in spite of recent significant advancements in stent technology in general and in bifurcation stenting techniques in particular. Conventional angiography provides only limited information about bifurcation anatomy, plaque distribution and stent apposition and expansion.

As for all complex lesions, intravascular ultrasound (IVUS) has shown advantages over conventional angiographic guidance. Optical coherence tomography (OCT) has a resolution 10 times higher than that of IVUS and is able to provide valuable information at each step of PCI. This includes the measurement of coronary lumen in the mother vessel and daughter branches, the detection of plaque location, the planning of the most convenient stenting approach and the evaluation of stent expansion and strut apposition.<sup>2</sup>

### Optical Coherence Tomography Imaging and Analysis

OCT examination of bifurcation lesions should be performed in both the main vessel (MV) and the side branch (SB). Predilatation is often required to allow lesion crossing and effective blood clearance during the examination.

Automatic pullbacks are performed (usually at 20 mm/s) during contrast injection at a rate of 3 ml/s (right coronary) to 4–5 ml/s (left

coronary) – ideally using a power injector. Full replacement of blood with clear crystalloid contrast is fundamental to clear the blood from the vessel to obtain diagnostic images, which can be challenging in large vessels. Optimal sitting of the guiding catheter should be checked before starting the pullback.

A 6 Fr catheter is normally sufficient for optimal imaging, allowing the use of 6 Fr guiding catheters as standard. The OCT catheter is inserted distal to the lesion or stent to be examined, and the pullback continued until either the guiding catheter is reached or the maximal pullback length is completed.

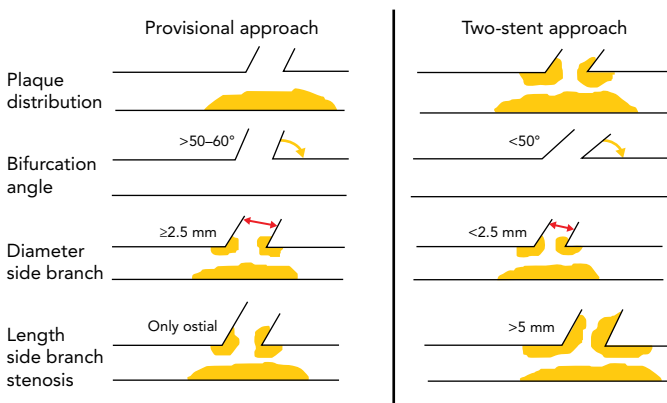
A longitudinal cross section of the entire vessel length is automatically generated and the cross sections of interest can be scrolled. Moreover, the real-time co-registration of OCT images with angiography facilitates combined angiographic and intracoronary high-resolution imaging of coronary arteries directly at the catheter laboratory, where the exact localisation of the acquired OCT frame can be displayed side-by-side on the angiogram. This allows a more precise identification of the carina and side-branches. Because of the clear interface between the lumen and wall, current software provides automatic detection of the lumen area and the percentage of area of stenosis, comparing user-defined reference and stenotic segments. Most OCT users value the possibility to detect in approximately 70 % of distal reference segments the media and obtain a manual measurement of the media-to-media diameter.

**Table 1: Strengths and Limitations of 2D Optical Coherence Tomography**

Strengths	Limitations
<ul style="list-style-type: none"> <li>• High resolution (axial 10–20 μm, lateral 20–40 μm).</li> <li>• Reliable evaluation of coronary anatomy, lumen area and lesion severity.</li> <li>• Detailed assessment of plaque composition and distribution.</li> <li>• Improved planning of the appropriate revascularisation strategy.</li> <li>• Valuable guide for SB rewiring.</li> <li>• Accurate detection of stent under-expansion, stent strut malapposition and stent edge dissection.</li> </ul>	<ul style="list-style-type: none"> <li>• Low tissue penetration (approximately 2 mm)</li> <li>• The need for contrast injection.</li> <li>• Risk of SB dissection (if vessel is small).</li> <li>• Difficult evaluation of large vessels (improved by 3D OCT).</li> <li>• Difficult evaluation of SB ostium (improved by 3D OCT).</li> <li>• The need for specific training.</li> <li>• High cost.</li> </ul>

OCT = optical coherence tomography; SB = side branch.

**Figure 1: Bifurcation Characteristics Guiding the Interventional Approach**



The left panel summarises the elements that suggest a provisional approach, including an eccentrically distributed plaque placed opposite to the carina, a bifurcation angle  $\geq 50\text{--}60^\circ$ , a diameter of the distal side branch reference segment  $\geq 2.5$  mm and evidence of ostial SB stenosis. The right panel summarises the elements that contribute to side branch ostium stenosis after bifurcation main vessel stenting, suggesting the use of the two-stent approach.

The recent Optical Coherence Tomography Compared With Intravascular Ultrasound And Angiography To Guide Coronary Stent Implantation: A Multicenter Randomized Trial In Percutaneous Coronary Intervention (ILUMIEN III: OPTIMIZE PCI) study obtained superior results compared with the previous OCT/IVUS head-to-head comparisons.<sup>3</sup> The study employed a specific OCT-guided stent optimisation algorithm based on measurement of the external elastic lamina in the proximal and distal reference segments, designed to achieve larger stent dimensions and more complete lesion coverage. However, the low-depth penetration of light through lipid-rich plaque often results in an inability of OCT to visualise the true vessel size (delineated by the external elastic lamina) at the lesion site, which is why the use of the media-to-media diameter is widespread.

While the main goal of the OCT examination is the identification of proximal and distal reference in the main vessel and the length of the lesion, OCT examination of the SB may be helpful if there are doubts about plaque burden both in terms of severity and length, which are the two main determinants of the need for a two-stent technique. Because each OCT round requires 10–15 ml of contrast, in general the assessment should be performed once before stenting and after

optimisation of the stent results based on the diameter measurements obtained with the pre-stent OCT. The repetition of the OCT pullback in the SB after stenting can be avoided when the SB is small or only a provisional approach with no SB stent has been used. On the contrary, in the case of two-stent implantation, the evaluation of SB ostium is of particular importance, often difficult with angiography or OCT examination of the MV alone. 3D OCT reconstruction can, in part, overcome some of the limitations of 2D OCT, allowing a better view of SB ostium and with immediate detection and colour coding of the malapposed struts.<sup>4</sup> The strengths and limitations of 2D OCT are summarised in *Table 1*.

**Optical Coherence Tomography-guided Decision Making**

**Coronary Bifurcation Anatomy, Lesion Severity and Choice of Revascularisation Strategy**

OCT provides an accurate evaluation of all the segments of the vessel involved in the bifurcation, including the proximal and distal MV and the SB, with the difficulties related to the assessment of SB ostium discussed in the previous section.

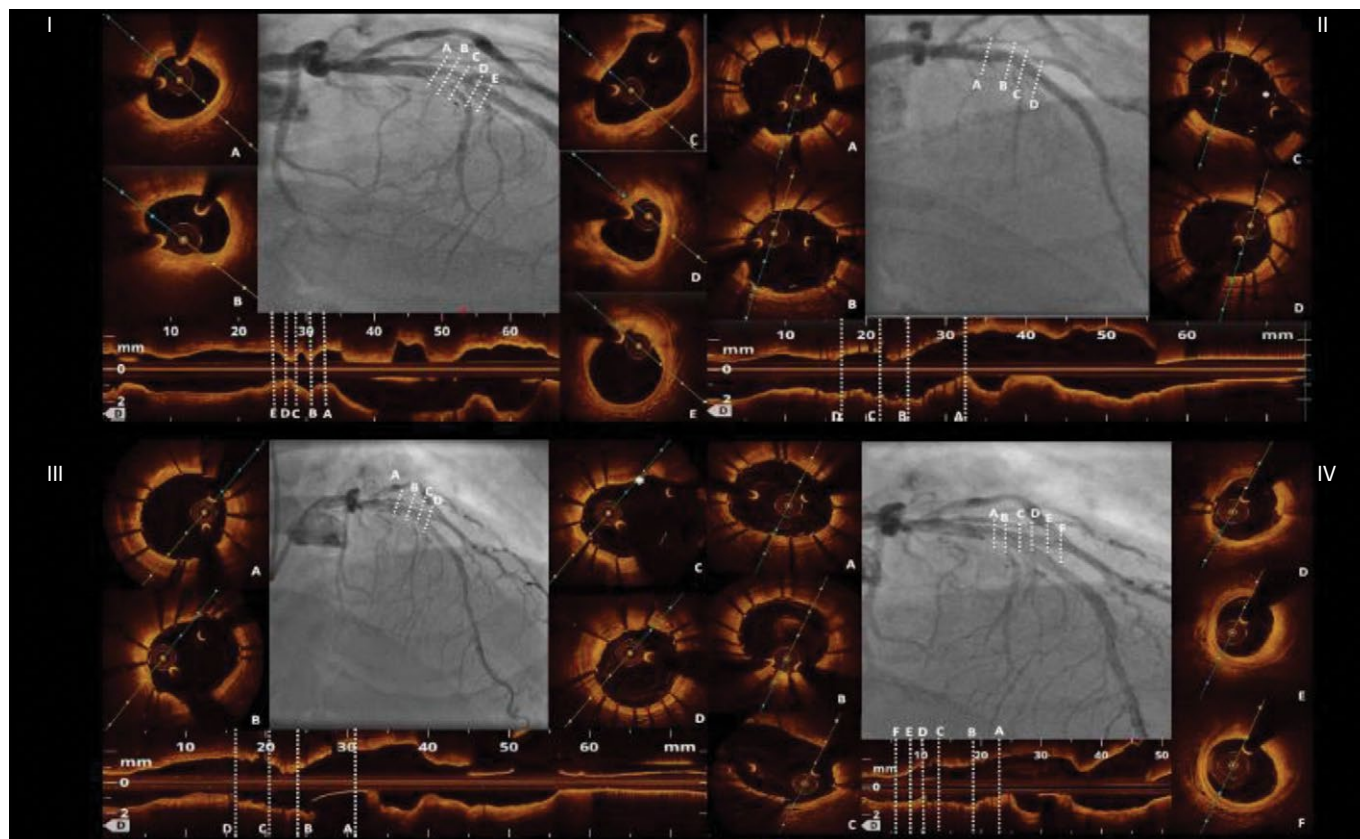
Careful evaluation of bifurcation anatomy and plaque distribution is of great importance because it influences the main decision in the revascularisation strategy: is a single stent likely to maintain good flow in the side-branch as well (provisional single stent) or should a two stent strategy should be the preferred approach from the outset? OCT can identify plaque severity in the main vessel and, when this is distributed eccentrically opposite to the carina, the chances of SB occlusion are small.

The other four elements important for the decision (SB ostial stenosis, bifurcation angle, length of the proximal SB disease, diameter of the distal SB reference segment) can be explored only in part from a MV OCT run. However, in general, the combination of OCT and angiographic information are sufficient for an informed decision (*Figure 1*). Highly significant correlation between the measurements of coronary lumen performed by OCT and IVUS has been reported, with slight, predictable, overestimation of lumen areas by IVUS.<sup>5,6</sup>

Watanabe et al. demonstrated that a bifurcation angle  $< 50^\circ$  and a length from the proximal branching point to the carina tip of  $< 1.70$  mm had a significant prognostic power in predicting SB obstruction after MV stenting.<sup>7</sup> Furthermore, high lipid content in the MV lesion and contralateral location of lipid in the bifurcation area – particularly in the proximal wall opposite to the flow divider that is the area with a higher risk of developing vulnerable plaques and vessel rupture – have been shown to contribute to SB ostium stenosis after MV provisional stenting.<sup>8</sup> In this context, OCT is able to provide important information about plaque composition and vulnerability compared with IVUS and angiography, being able to effectively detect lipid content of the plaque.

This should be taken into account by the operator when choosing between a single- versus two-stent revascularisation strategy. Indeed, when the risk of SB closure is low, a provisional SB stent implantation strategy should be considered the standard approach for treatment of bifurcation lesions.<sup>9</sup> However, when the aforementioned parameters suggest a high risk of SB ostium stenosis or when an ostial stenosis of  $\geq 50\%$  extending  $> 2.5$  mm from the carina is detected, a two-stent technique should be preferred.<sup>10,11</sup>

Figure 2: Use of OCT at Different Stages of Assessment



Panel I. OCT baseline lesion assessment. A: Proximal lumen reference; B, C: Quality characterisation of plaque composition showing fibro lipidic plaque with mild calcifications; D: MLA: 2.80 mm<sup>2</sup>; E: Distal lumen reference. Panel II. OCT assessment post stent deployment. A: Proximal stent edge; B: Pre-bifurcation cross section; C: Cross section at the bifurcation site with jailed wire into the side branch (\*); D: Distal stent edge. Panel III. OCT-guided side branch rewiring and kissing balloon optimisation. A: Better stent expansion at the proximal edge and (B) proximally to the bifurcation site; C: Stent cells are well opened at the bifurcation site after rewiring and kissing balloon dilatation (\* indicates the only malapposed strut); D: Cross section after the bifurcation site showing good stent apposition and expansion without stent deformation after kissing balloon optimisation. Panel IV. OCT assessment of the side branch after stent implantation. A, B: Cross sections show optimal stent implantation proximally to the bifurcation; C: Widely opened side branch ostium without significant stent malapposition; D: No evidence of dissection at the side branch ostium with MLD of 2.6 mm; E, F: Distally to the side branch ostium there is evidence of fibro-lipidic plaque without significant stenosis of the lumen. OCT = optical coherence tomography; MLA = minimal lumen area; MLD = minimal lumen diameter.

Moreover, OCT detects calcium effectively, and can provide information about its thickness and area, along with identifying plaques associated with poor stent expansion that should prompt consideration for pre-stent lesion preparation with techniques such as rotational atherectomy, orbital atherectomy, or cutting or scoring balloons.<sup>12</sup>

### Stent Choice, Implantation and Side Branch Rewiring

Selecting the correct stent size is particularly relevant in bifurcation lesions because stent oversizing in the MV can determine SB distortion and narrowing because of carina shifting.<sup>7</sup> Stents should be sized according to the distal MV reference diameter (Figure 2) and permanent drug-eluting stents should be the stents of choice.<sup>10,13</sup> As mentioned, OCT provides reliable measurement of the coronary lumen, improving the selection of the correct stent size, as well as the correct balloon size for the proximal MV stent dilatation, considered a standard step in bifurcation treatment.<sup>10</sup>

One of the most unique roles played by OCT in the treatment of bifurcation lesions is to guide and optimise SB rewiring. Indeed, wire recrossing to the SB is necessary when a two-stent strategy is chosen or when there is an impaired SB flow after stenting the MV – frequently this step of the procedure can prove challenging. OCT allows a careful evaluation of wire positions after stent rewiring to ensure optimal SB recrossing and to exclude accidental rewiring outside the stent (Figure 3). It has been widely demonstrated that a distal stent cell for recrossing

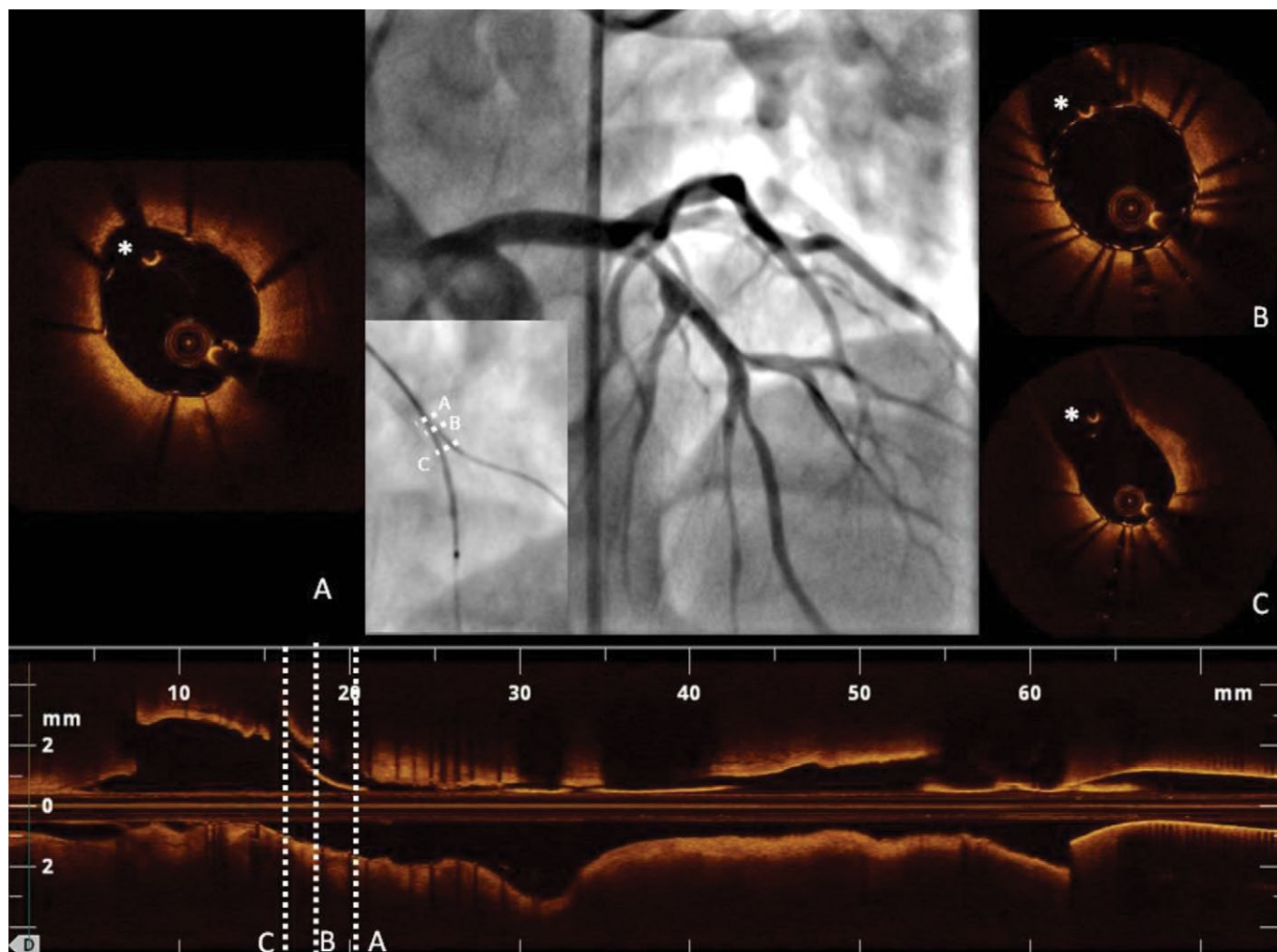
reduces the extent of the metallic carina and favours appropriate stent expansion and stent strut apposition at the ostium of the SB.<sup>14,15</sup> In this context, 3D-OCT provides more valuable information than 2D. It allows improved assessment of the SB ostium and rewiring position into the SB and a good detection of the configuration of overhanging stent in front of the SB ostium, reducing the incidence of incomplete stent apposition compared with 2D.<sup>4,15,16</sup>

OCT has also been used to evaluate the effectiveness of new devices dedicated to bifurcation lesions. The efficacy of the Tryton dedicated side branch stent (Tryton Medical) was tested in small populations<sup>17,18</sup> then more widely in the Prospective, Single Blind, Randomized Controlled Study to Evaluate the Safety and Effectiveness of the Tryton Side Branch Stent Used With DES in the Treatment of De Novo Bifurcation Lesions in the MB and SB in Native Coronaries (TRYTON) trial,<sup>19</sup> which failed to demonstrate superiority of this new stent above conventional provisional stenting. Similarly, OCT was used to evaluate the STENTYS stent (STENTYS SA), a provisional, self-expanding nitinol drug-eluting or bare-metal stent reported to have a good success rate along with a low rate of major adverse cardiac events.<sup>20</sup>

### Evaluation of Stent Implantation After Percutaneous Coronary Intervention

After the implantation of one or more stents in the bifurcation, OCT is definitely the technique of choice for the assessment of the final

Figure 3: Example of OCT Assessment of Side-branch Rewiring After Stent Implantation



A: The guidewire is advanced distal to the bifurcation carina; B: The stent crossing site is located at the level of a very distal cell (C) with the wire correctly positioned in the side branch. \*indicates the guidewire. OCT = optical coherence tomography.

treatment results (Figure 2). Indeed, stent under-expansion, stent strut malapposition, and stent-edge dissection are particularly common in bifurcation lesions and, while often missed by angiography,<sup>21</sup> can be accurately detected with the high-resolution images provided by OCT. These findings seem to be related with an increased stent thrombosis and stent restenosis risk.<sup>21</sup>

Stent under-expansion, defined as an in-stent minimum lumen area <70 % of the average reference lumen area<sup>22</sup> or as a minimal stent area of the proximal and/or distal segment <90 % of the proximal and/or distal reference lumen area respectively<sup>23</sup>, has been correlated with a increased risk of all-cause mortality, myocardial infarction and target lesion revascularisation in several trials that used OCT for the assessment of PCI results. These include the Clinical Impact of OCT Findings During PCI II (CLI-OPCI II)<sup>22</sup> and the ILUMIEN III: OPTIMIZE

PCI<sup>3</sup> studies. The same trials reported a high incidence of stent strut malapposition and stent edge dissection,<sup>3,22</sup> although the clinical importance of these findings is debated.<sup>3,21–23</sup> However, evidence of suboptimal stent implantation provided by OCT can prompt the interventionalist to improve the stent placement, guiding the choice of the proper balloon size for post-dilatation and reducing the risk of poor outcomes for the patient.

### Conclusion

OCT is a fundamental tool in the interventional cardiologist's arsenal for the treatment of complex coronary lesions such as bifurcation lesions. Indeed, OCT provides valuable additional information compared with angiography and IVUS that can guide the operator at each step of the PCI – from the planning of the appropriate revascularisation strategy to the assessment of final results. ■

1. Al Suwaidi J, Berger PB, Rihal CS, et al. Immediate and longterm outcome of intracoronary stent implantation for true bifurcation lesions. *J Am Coll Cardiol* 2000;35:929–36. [https://doi.org/10.1016/S0735-1097\(99\)00648-8](https://doi.org/10.1016/S0735-1097(99)00648-8); PMID: 10732890.
2. Di Mario C, Iakovou I, van der Giessen WJ, et al. Optical coherence tomography for guidance in bifurcation lesion treatment. *EuroIntervention* 2010;6(Suppl J):99–106. <https://doi.org/10.4244/EIJV6SUPJA16>; PMID: 21930500.
3. Ali ZA, Maehara A, Généreux P, et al. Optical coherence

- tomography compared with intravascular ultrasound and with angiography to guide coronary stent implantation (ILUMIEN III: OPTIMIZE PCI): a randomised controlled trial. *Lancet* 2016;388:2618–28. [https://doi.org/10.1016/S0140-6736\(16\)31922-5](https://doi.org/10.1016/S0140-6736(16)31922-5); PMID: 27806900.
4. Nagoshi R, Okamura T, Murasato Y, et al. Feasibility and usefulness of three-dimensional optical coherence tomography guidance for optimal side branch treatment in coronary bifurcation stenting. *Int J Cardiol* 2018;250:270–4. <https://doi.org/10.1016/j.ijcard.2017.09.197>; PMID: 29030141.

5. Okamura T, Onuma Y, Garcia-Garcia HM, et al. First-in-man evaluation of intravascular optical frequency domain imaging (OFDI) of Terumo: A comparison with intravascular ultrasound and quantitative coronary angiography. *EuroIntervention* 2011;6:1037–45. <https://doi.org/10.4244/EIJV6I9A182>; PMID: 21518674.
6. Gonzalo N, Serruys PW, Garcia-Garcia HM, et al. Quantitative ex vivo and in vivo comparison of lumen dimensions measured by optical coherence tomography and intravascular ultrasound in human coronary arteries. *Rev*

- Esp Cardiol* 2009;62:615–24. [https://doi.org/10.1016/S0300-8932\(09\)71328-4](https://doi.org/10.1016/S0300-8932(09)71328-4); PMID: 19480757.
7. Watanabe M, Uemura S, Sugawara Y, et al. Side branch complication after a single-stent crossover technique: prediction with frequency domain optical coherence tomography. *Coron Artery Dis* 2014;25:321–9. <https://doi.org/10.1097/MCA.000000000000091>; PMID: 24769514.
  8. Kini AS, Vengrenyuk Y, Pena J, et al. Plaque morphology predictors of side branch occlusion after provisional stenting in coronary bifurcation lesion: Results of optical coherence tomography bifurcation study (ORBID). *Catheter Cardiovasc Interv* 2017;89:259–68. <https://doi.org/10.1002/ccd.26524>; PMID: 27029714.
  9. Chen SL, Santoso T, Zhang JJ, et al. A randomized clinical study comparing double kissing crush with provisional stenting for treatment of coronary bifurcation lesions: results from the DKCRUSH-II (Double Kissing Crush versus Provisional Stenting Technique for Treatment of Coronary Bifurcation Lesions) trial. *J Am Coll Cardiol* 2011;57:914–20. <https://doi.org/10.1016/j.jacc.2010.10.023>; PMID: 21329837.
  10. Lassen JF, Holm NR, Banning A, et al. Percutaneous coronary intervention for coronary bifurcation disease: 11th consensus document from the European Bifurcation Club. *EuroIntervention* 2016;12:38–46. <https://doi.org/10.4244/EIJV12I1A7>; PMID: 27173860.
  11. Foin N, Mattesini A, Ghione M, et al. Tools & techniques clinical: Optimising stenting strategy in bifurcation lesions with insights from *in vitro* bifurcation models. *EuroIntervention* 2013;9:885–7. <https://doi.org/10.4244/EIJV9I7A144>; PMID: 24280162.
  12. Kubo T, Shimamura K, Ino Y, et al. Superficial calcium fracture after PCI as assessed by OCT. *JACC Cardiovasc Imaging* 2015;10:1228–9. <https://doi.org/10.1016/j.jcmg.2014.11.012>; PMID: 25797130.
  13. Mattesini A, Secco GG, Dall'Ara G, et al. ABSORB biodegradable stents versus second-generation metal stents: A comparison study of 100 complex lesions treated under OCT guidance. *JACC Cardiovasc Interv* 2014;7:741–50. <https://doi.org/10.1016/j.jcin.2014.01.165>; PMID: 25060016.
  14. Alegria-Barrero E, Foin N, Chan PH, et al. Optical coherence tomography for guidance of distal cell recrossing in bifurcation stenting: choosing the right cell matters. *EuroIntervention* 2012;8:205–13. <https://doi.org/10.4244/EIJV8I2A34>; PMID: 22581489.
  15. Fujimura T, Okamura T, Tateishi H, et al. Serial changes in the side-branch ostial area after main-vessel stenting with kissing balloon inflation for coronary bifurcation lesions, assessed by 3D optical coherence tomography. *Eur Heart J Cardiovasc Imaging* 2018;19:1117–25. <https://doi.org/10.1093/ehjci/jex213>; PMID: 29069325.
  16. Koiwaya H, Takemoto M, Ogata K, et al. The impact of three-dimensional optical coherence tomography and kissing-balloon inflation for stent implantation to bifurcation lesions. *J Cardiol Cases* 2016;13:133–6. <https://doi.org/10.1016/j.jccase.2015.12.003>
  17. Tyczynski P, Ferrante G, Kukreja N, et al. Optical coherence tomography assessment of a new dedicated bifurcation stent. *EuroIntervention* 2009;5:544–51. <https://doi.org/10.4244/EIJV5I5A89>; PMID: 20142174.
  18. Ferrante G, Kaplan AV, Di Mario C. Assessment with optical coherence tomography of a new strategy for bifurcational lesion treatment: The tryton side-branch stent. *Catheter Cardiovasc Interv* 2009;73:69–72. <https://doi.org/10.1002/ccd.21803>; PMID: 19089962.
  19. Genereux P, Kumsars I, Lesiak M, et al. A randomized trial of a dedicated bifurcation stent versus provisional stenting in the treatment of coronary bifurcation lesions. *J Am Coll Cardiol* 2015;65:533–43. <https://doi.org/10.1016/j.jacc.2014.11.031>; PMID: 25677311.
  20. Verheye S, Grube E, Ramcharitar S, et al. First-in-man (FIM) study of the Stentys bifurcation stent – 30 days results. *EuroIntervention* 2009;4:566–71. <https://doi.org/10.4244/EIJV4I5A96>; PMID: 19378675.
  21. Burzotta F, Talarico GP, Trani C, et al. Frequency-domain optical coherence tomography findings in patients with bifurcated lesions undergoing provisional stenting. *Eur Heart J Cardiovasc Imag* 2014;15:547–55. <https://doi.org/10.1093/ehjci/jet231>; PMID: 24255135.
  22. Prati F, Romagnoli E, Burzotta F, et al. Clinical impact of OCT findings during PCI: The CLI-OPCI II study. *JACC Cardiovasc Imaging* 2015;8:1297–305. <https://doi.org/10.1016/j.jcmg.2015.08.013>; PMID: 26563859.
  23. Santos MC, Lin T, Barlis P. In-stent restenosis associated with stent malapposition: seven year optical coherence tomography findings. *Int J Cardiol* 2011;147:149–51. <https://doi.org/10.1016/j.ijcard.2010.02.068>; PMID: 20227776.