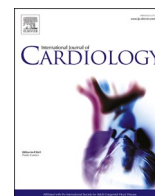




Since January 2020 Elsevier has created a COVID-19 resource centre with free information in English and Mandarin on the novel coronavirus COVID-19. The COVID-19 resource centre is hosted on Elsevier Connect, the company's public news and information website.

Elsevier hereby grants permission to make all its COVID-19-related research that is available on the COVID-19 resource centre - including this research content - immediately available in PubMed Central and other publicly funded repositories, such as the WHO COVID database with rights for unrestricted research re-use and analyses in any form or by any means with acknowledgement of the original source. These permissions are granted for free by Elsevier for as long as the COVID-19 resource centre remains active.



## Worldwide differences of hospitalization for ST-segment elevation myocardial infarction during COVID-19: A systematic review and meta-analysis<sup>☆</sup>

Francesco Sofi<sup>a</sup>, Monica Dinu<sup>a</sup>, GianPaolo Reboldi<sup>b,c</sup>, Fabrizio Stracchi<sup>b</sup>, Roberto F.E. Pedretti<sup>d</sup>, Serafina Valente<sup>e</sup>, GianFranco Gensini<sup>d</sup>, C. Michael Gibson<sup>f,1</sup>, Giuseppe Ambrosio<sup>c,g,\*</sup>

<sup>a</sup> Department of Experimental and Clinical Medicine, University of Florence, Florence, Italy

<sup>b</sup> Department of Medicine, University of Perugia School of Medicine, Perugia, Italy

<sup>c</sup> Center for Clinical and Translational Research–CERICLET, University of Perugia School of Medicine, Perugia, Italy

<sup>d</sup> IRCCS MultiMedica, Milan, Italy

<sup>e</sup> Cardiology, Siena University Hospital, Siena, Italy

<sup>f</sup> Bain Institute for Clinical Research, Harvard Medical School, Boston, MS, United States of America

<sup>g</sup> Division of Cardiology, University of Perugia School of Medicine, Perugia, Italy

### ARTICLE INFO

#### Keywords:

COVID-19

Myocardial infarction

Acute coronary syndromes

STEMI

Healthcare organization

Sars-Cov-2

### ABSTRACT

**Background:** Discrepant data were reported about hospital admissions for ST-segment elevation myocardial infarction (STEMI) during COVID-19 pandemic. We reviewed studies reporting STEMI hospitalizations during COVID-19 pandemic, investigating whether differences in COVID-19 epidemiology or public health-related factors could explain discrepant findings in different countries.

**Methods:** Search through MedLine, Embase, Scopus, Web-of-Science, Cochrane Register of Controlled Trials, of studies comparing STEMI admissions during COVID-19 pandemic with a reference period, without language restrictions, as registered in PROSPERO International Prospective Register of Systematic Reviews. Preferred Reporting Items for Systematic Reviews and Meta-analysis (PRISMA) guidelines were followed. Data independently extracted by multiple investigators were pooled using a random-effects model. Health-related metrics were from publicly-available sources.

**Results:** We included 79 articles (111,557 STEMI cases, from 57 countries). During peak COVID-19 pandemic, overall incidence rate-ratio (IRR) of STEMI hospitalizations over reference period decreased (0.80; 95% CI 0.76–0.84;  $p < 0.05$ ). Although wide variations and significant heterogeneity were detected among studies ( $I^2 = 89%$ ;  $p < 0.0001$ ), no significant differences were observed by report methodology (survey vs registry), or observation/reference period. However, large differences emerged at country level not explained by COVID-related epidemiological data, nor by public health strategies. Instead, IRRs for STEMI admissions were inversely related to hospital bed availability in each country ( $p < 0.05$ ).

**Conclusions:** During COVID-19 pandemic hospitalization for STEMI significantly decreased, although to a smaller extent than initially reported. Large variability emerged across countries, unrelated to COVID-related epidemiology or social containment measures. Disparities in healthcare organization likely contributed, indicating that proper organization of emergency medicine should be preserved during pandemics.

<sup>☆</sup> All authors take responsibility for all aspects of the reliability and freedom from bias of the data presented and their discussed interpretation. Authors report no conflicts of interest potentially related to this work. Partly supported by Italian Ministry of Health “Ricerca Corrente” funds to IRCCS MultiMedica, #01:02:00 “Diagnostica e terapia delle sindromi coronariche acute”, and #3.11 RCR 2020- 23670065 “Clinical and Imaging Biomarkers Associated With Plasma and Cellular Determinants of Cardiovascular Disease at the Time of Covid-19.”

\* Corresponding author at: University of Perugia School of Medicine, Ospedale S. Maria della Misericordia, Piazzale Menghini, 06156 Perugia, Italy.

E-mail address: [giuseppe.ambrosio@unipg.it](mailto:giuseppe.ambrosio@unipg.it) (G. Ambrosio).

<sup>1</sup> Both authors share senior authorship.

<https://doi.org/10.1016/j.ijcard.2021.10.156>

Received 4 September 2021; Received in revised form 4 October 2021; Accepted 29 October 2021

Available online 2 November 2021

0167-5273/© 2021 The Authors.

Published by Elsevier B.V. This is an open access article under the CC BY-NC-ND license

(<http://creativecommons.org/licenses/by-nc-nd/4.0/>).

## 1. Introduction

Coronavirus disease (COVID)-19 syndrome is having a tremendous health impact worldwide. Being caused by a novel strain of virus (SARS-CoV-2), many issues still need to be better understood about this disease. Among them, it would be important to analyze the impact of COVID-19 on acute coronary syndromes (ACS). Several features of SARS-CoV-2 infection would lead to predict that COVID-19 might be associated with increased incidence of ACS, including: a) large-series observations [1–5], and a huge autopsy-confirmed study [6], showing a several-fold increase in the incidence of acute myocardial infarction synchronous with outbreaks of respiratory virus infections; b) evidence of intravascular coagulation, platelet activation, and arterial thrombosis in COVID-19 patients [7–11]; c) demonstration of prothrombotic autoantibodies in the serum of COVID-19 patients [12]; d) evidence of SARS-CoV-2 localization in the endothelium, and vasculitis [10,13].

However, despite these premises, early reports described a sharp decrease in hospital admissions for ST-segment elevation myocardial infarction (STEMI) during COVID-19 pandemic, around 50% or more compared to historical series [14–18], stirring much interest and concern, even among lay press [19,20]. In contrast, other studies indicated only modest (<5%) or no decrease [21–26], or even substantial increase [27–35] in STEMI admissions during COVID-19 pandemic.

Being able to more accurately estimate the true effect of COVID-19 pandemic on STEMI hospitalizations across countries, and the potential role on it of differences in COVID-19 epidemiology and public health-related parameters, is a relevant and timely topic. On the one hand, it might shed light on the pathophysiology of ACS in the context of SARS-CoV-2 infection; even more importantly, understanding how a pandemic impacts STEMI hospitalizations could translate into better organization of delivery of care for this life-threatening condition, and spur optimal preparedness for possible future pandemics. Accordingly, the purpose of this study was to thoroughly review all available information with respect to the incidence of STEMI hospitalizations during COVID-19 pandemic, worldwide, and meta-analyze differences from previous years. Possible factors underlying discrepant results were also evaluated.

## 2. Methods

The study was conducted following the Preferred Reporting Items for Systematic Reviews and Meta-analysis (PRISMA) guidelines; the protocol was registered in PROSPERO International Prospective Register of Systematic Reviews (ID: CRD42020188198). Ethics Committee approval was not required as the study does not involve human participants, being based on meta-analysis of aggregated published data.

### 2.1. Search strategy and selection of studies

A systematic search of major bibliographic databases [MedLine, Embase, Scopus, Web of Science, Cochrane Central Register of Controlled Trials (CENTRAL)] was performed independently by two researchers (F.S., M.D.) up to November 17th, 2020, without language restrictions. Comprehensive search criteria were used to identify articles addressing the impact of COVID-19 outbreak on admission for STEMI. The following terms were used for search: “*covid*”, “*covid-19*”, “*sars-cov*”, “*sars-cov-2*”, “*coronavirus*”, AND “*ST-segment elevation myocardial infarction*”, or “*STEMI*”, or “*cardiovascular disease*”, or “*acute coronary syndrome*”, or “*myocardial infarction\**” (Supplementary Table 1), following PICOS (Population, Intervention, Comparison, Outcome, Study) design format (Supplementary Table 2). Reference lists of eligible studies were also screened for additional studies. As many reports were not published as full papers, research letters on the topic were also screened. Online translation tools and language skills of colleagues were used for articles published in languages other than English.

Two investigators (F.S., M.D.) independently screened the database

search for titles and abstracts. Studies that reported number of STEMI hospitalizations during the COVID-19 outbreak and number of STEMI hospitalizations during a reference period were considered eligible. Decision to include the studies was based on title, abstract (when available), and full-text screening.

### 2.2. Data extraction

Two investigators (M.D., F.S.) independently extracted relevant information from each eligible study using a standardized data extraction form. Disagreements were resolved by consensus, or by a third investigator (G.A.) if consensus could not be reached. Extracted data included: first author, year of publication, country of study, enrollment sites, number of days during observation period and during reference period, number of cases during observation and reference period, incidence rate (IR) per-day during observation period and during reference period, incidence rate ratio (IRR) with their 95% CIs. When multiple reference periods were reported, we chose the same period of different years as reference; in case of multiple-year comparison, the entire period was taken as reference.

### 2.3. Assessment of methodological quality

Two investigators (F.S., M.D.) independently assessed the methodological quality of each study using the STROBE checklist for observational studies [36]. The total number of items on the STROBE checklist was 22. If an item was not applicable due to study design, it was scored as ‘not applicable’. Disagreements were resolved by consensus, or by a third investigator (G.A.) if consensus could not be reached.

### 2.4. Public health-related metrics

To estimate the overall health impact of COVID-19 epidemic, for each country we retrieved (relative to the date of observation of each study) [37–41]: a) number of SARS-CoV-2 positive cases; b) number of COVID-19 deaths; c) SARS-CoV-2 reproduction rate (to estimate time-course and severity of the epidemic); d) “stringency index” of lockdown measures (based on rigorously defined parameters, measured in a comparable way across countries); e) population density; f) gross domestic product/per capita; g) cardiovascular death rate; h) health development index; i) number of hospital beds/1000 inhabitants (see also Supplement).

### 2.5. Statistical analysis

Publication data were analyzed using Review Manager (RevMan 5.3 for Macintosh; Copenhagen, Denmark). For each study, results were reported as IR, and IRR of IR during observation period over IR during reference period. A random-effects model (DerSimonian and Laird method), which accounts for inter-study variation and provides a more conservative effect than the fixed-effect model, was used. Pooled results were reported as IRRs, and presented with 95% confidence intervals (CIs) with 2-sided *P* values. A *P* value < 0.05 was considered significant.

The studies were also grouped per country. Statistical heterogeneity among studies was estimated using the Chi-square Cochran’s *Q*-test with *I*<sup>2</sup> statistic, which provides an estimate of the amount of variance due to heterogeneity rather than sampling error. Where *I*<sup>2</sup> exceeded 50%, heterogeneity was considered substantial.

Subgroup analyses were performed to explore the source of the heterogeneity, according to several characteristics of each study [Enrolment (hospitals vs. registries); timing of observation period (February-April vs. January-May); length of observation period (<53 vs ≥53 days); reference period: inter-year (same period in different years) vs. intra-year (different period of same year, or different periods of different years); study quality (high; medium; low)]; public health-related metrics. The possibility of publication bias was explored by

visual inspection of funnel plot of the effect size against the inverse of the standard error. Meta-regression models were formed to explore and identify potential effect modifiers among public-health metrics. To control for false-positive findings (type I error), when performing meta-regression with multiple covariates, we used a test based on random permutations to calculate and report multiplicity-adjusted *p*-values (See Supplementary Material).

### 3. Results

#### 3.1. Literature search

The search strategy yielded 18,366 references. After duplicate removal, and title and abstract screening, 216 articles were selected, of which 79 were included in the analysis after full text assessment (Supplementary Fig. 1; References in Supplement).

#### 3.2. Characteristics of studies

Overall, studies reported data from 57 countries (Fig. 1; Supplementary Table 3). Of the 79 available articles, 5 reported a drastic, >50% decrease in STEMI hospitalizations; in contrast, 6 articles reported no or modest decrease (0% to 5%), and 9 actually described an increase in STEMI hospitalizations compared with the reference period (Supplementary Table 3).

For 69 reports, data were collected through “ad hoc” surveys of selected hospitals, whereas 10 studies reported data obtained from already ongoing registries or health-insurance funds. Fifty-five studies chose a narrower observation timing (Mid-February–April 2020), whereas 24 included January and/or May 2020, observation period ranging from 7 to 152 days (mean 53 days). Regarding the reference period, different selection methods were found: a) same period of year 2019; b) a period immediately preceding observation period; c) average

of same period of previous years. Mean duration of reference period was 147 days.

Overall analysis includes a total of 48,396 STEMI cases during observation period, and 63,161 cases during reference period. Based on STROBE checklist, quality was high in 43 studies (54.4%), moderate in 8 studies (10.1%) and low in 28 studies (35.4%) (Supplementary Table 3).

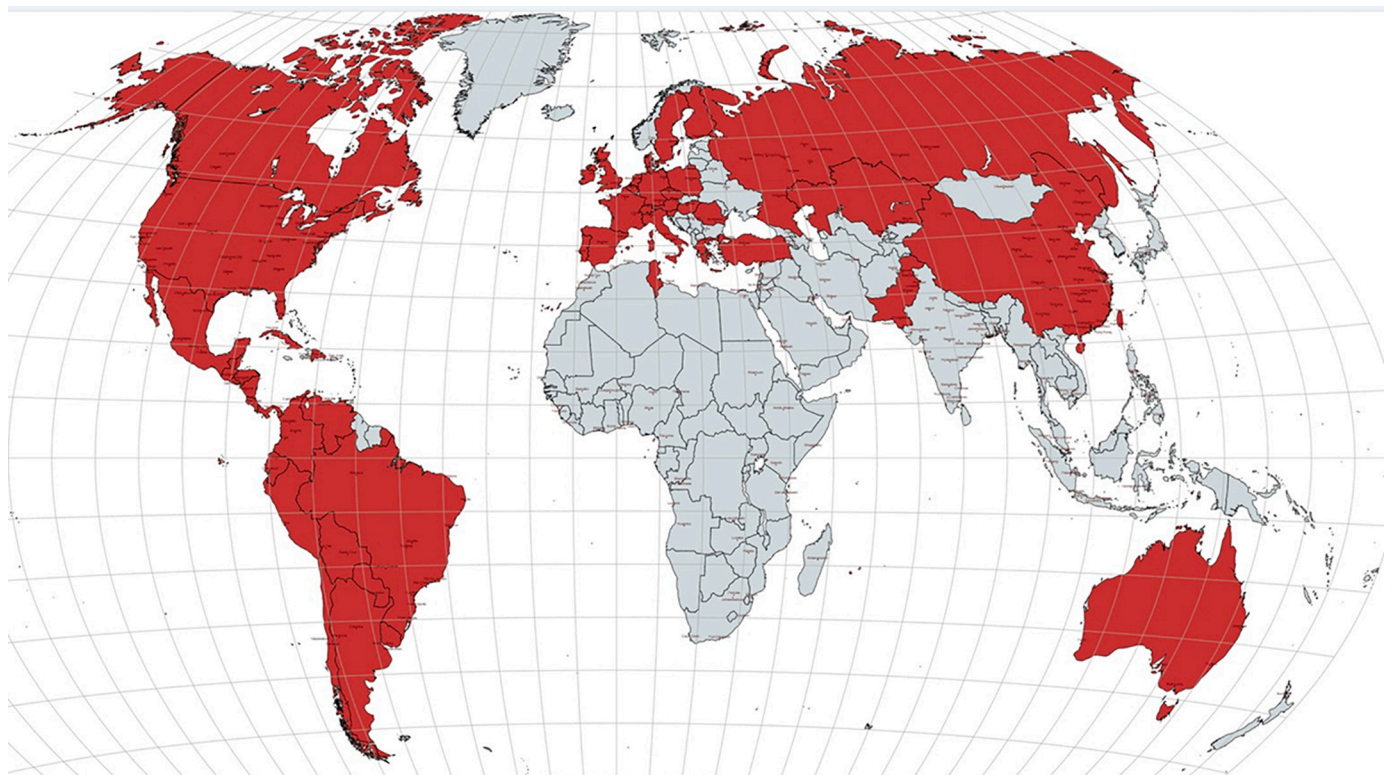
#### 3.3. Meta-analytic results

The IRR under a random-effects model reported a significant reduction in the number of hospitalizations for STEMI (0.80, 95% CI 0.76–0.84;  $p < 0.0001$ ) during peak COVID-19 epidemic compared with the reference period (Supplementary Fig. 2). However, substantial degree of heterogeneity was found ( $I^2 = 89%$ ;  $p < 0.0001$ ).

Country specific analyses are shown in Fig. 2a–c. Overall, around 20% reduction in STEMI hospitalizations was reported for Europe (0.81, 95% CI 0.76–0.86;  $p < 0.0001$ ), Asia-Pacific and Middle East (0.83, 95% CI 0.75–0.91), and North, Central, and South America (NCSA) region (0.76, 95% CI 0.66–0.86) (all  $p < 0.0001$ ). Latin America countries reported the largest decrease in STEMI hospitalizations (>50%), whereas France, Denmark, and South-East Asia reported no appreciable decrease. Country-wise, low or no heterogeneity ( $I^2 < 50%$ ) was observed for Germany, Spain, Austria, Greece, China.

#### 3.4. Subgroup analyses and publication bias

Stratifying studies on the basis of several variables to detect possible sources of heterogeneity, revealed no significant differences according to: type of reporting (“ad hoc” surveys or registries), observation or reference period, study quality; importantly, similar decrease in STEMI admissions was observed when 55 studies reporting narrower observation periods, bracketing Mid-February–April were analyzed (IRR 0.77, 0.72–0.81; Supplementary Table 4). Possible presence of publication



**Fig. 1.** Geographical distribution of papers reporting STEMI admission data during COVID-19 pandemic. World map highlighting (in red) all 57 countries for which STEMI admission data during COVID-19 pandemic peak were reported and utilized for this meta-analysis. (For interpretation of the references to colour in this figure legend, the reader is referred to the web version of this article.)



FIGURE 2a

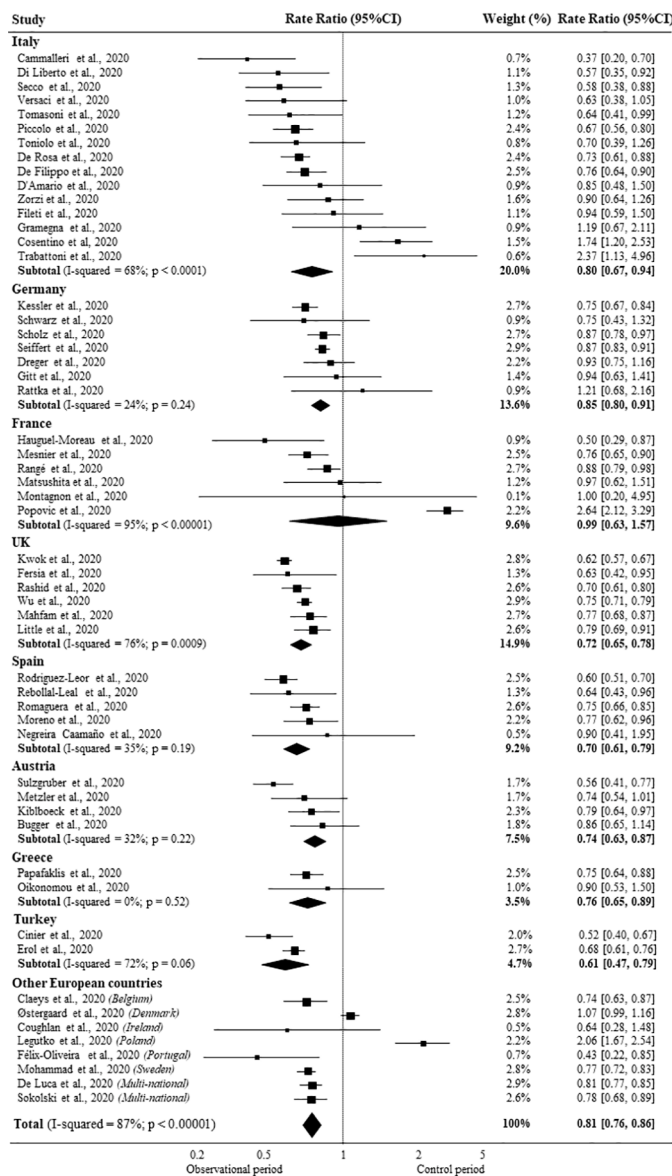


FIGURE 2b

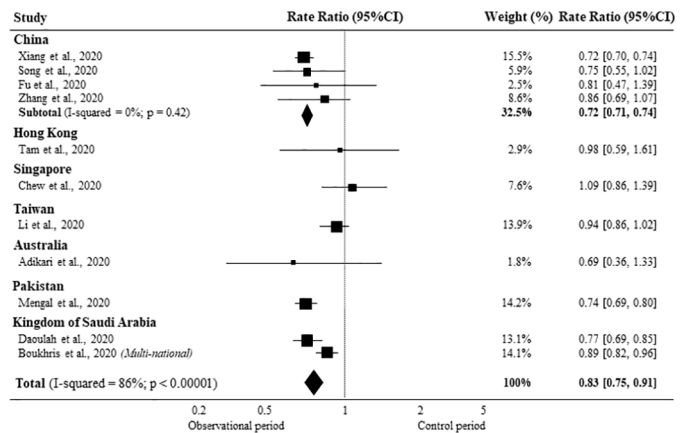


FIGURE 2c

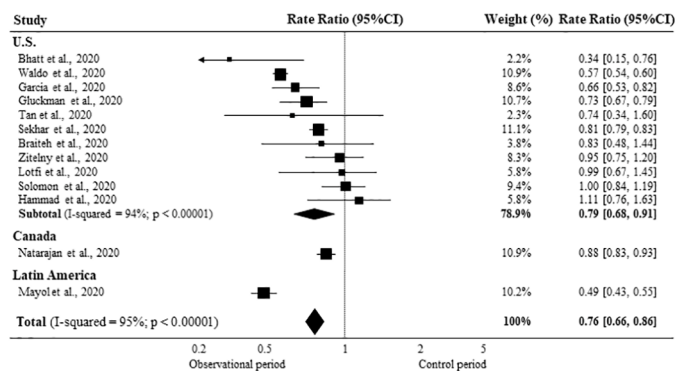


Fig. 2. Meta-analysis of all papers reporting STEMI admission data during COVID-19 pandemic, grouped by geographic areas. Each panel shows Forest plot of studies reporting STEMI hospitalizations during the COVID-19 peak compared to the control period in: European countries (2a); Asia-Pacific and Middle East (2b); North-Central-South America (NCSA) (2c).

Note: a) variability of results within the same geographical area; b) marked differences among different countries.

bias among studies was assessed through funnel plot estimate of effect size vs. standard error, which reported an asymmetrical visual examination (Supplementary Fig. 3).

### 3.5. Public health-related metrics

Possible effects of various public health metrics during peak COVID-19 pandemic on STEMI admissions in the various countries were also investigated. We found no statistical evidence supporting an effect of: SARS-CoV-2 positive cases or deaths, SARS-CoV-2 reproduction rate, “stringency index” of lockdown measures, population density, gross domestic product per capita, health development index, or cardiovascular death rate (Table 1a).

However, IRR was inversely and significantly related to hospital bed availability in the various countries (Table 1b; Fig. 3).

## 4. Discussion

This study documents that during the first peak of COVID-19 pandemic there has been a significant decrease in STEMI hospitalizations worldwide. However, the magnitude of decrease was of a lesser extent than initially described. Most importantly, substantial differences emerged among different studies and countries. Through a meta-analytical approach of a large number of reports, including >100,000 cases from 57 countries, and systematic assessment of various health-related metrics, a clearer picture emerges of an issue that has remarkable implications, both with respect to clinical medicine and to health care organization.

In the aftermath of the spread of SARS-CoV-2 infection, reports emerged of a dramatic decrease in hospital admissions for STEMI. These observations generated enormous interest in the medical community, and also in the lay press [19,20], yielding a number of reports which however widely differ with respect to the methodology employed to

**Table 1a**  
Public health variables in the various countries that did not contribute to the variance of IRR for STEMI explained by the meta-regression model.

Variable	IRR	95% CIs	Unadjusted <i>p</i> -value	Multiplicity adjusted <i>p</i> -value
Total SARS-Cov-2 positive cases	1.000	1.000–1.000	0.374	0.550
Total SARS-Cov-2 deaths	1.000	1.000–1.000	0.407	0.743
SARS-Cov-2 reproduction rate	0.839	0.691–1.018	0.063	0.075
Stringency index	1.001	0.995–1.007	0.140	0.802
Population density	1.000	1.000–1.000	0.597	0.696
Gross domestic product per capita	1.000	1.000–1.000	0.576	0.688
Cardiovascular death rate	1.000	0.999–1.001	0.607	0.942
Human development index	1.370	0.428–4.383	0.331	0.591

IRR: Incidence rate ratio; CI: Confidence interval.

**Table 1b**  
IRR for STEMI in Relation to Explanatory Variables in the various countries explained by the meta-regression model (see also Fig. 3).

Variable	IRR	95% CIs	Unadjusted <i>p</i> -value	Multiplicity adjusted <i>p</i> -value
Intercept	0.662	0.563–0.779	<0.001	<0.001
Hospital beds/1000 inhabitants	1.046	1.008–1.085	0.009	0.017

IRR: Incidence rate ratio; CI: Confidence interval.

Test of Moderators effect:  $F = 6.0450, p = 0.0165$ .

Proportion of heterogeneity accounted for: 12.89%.

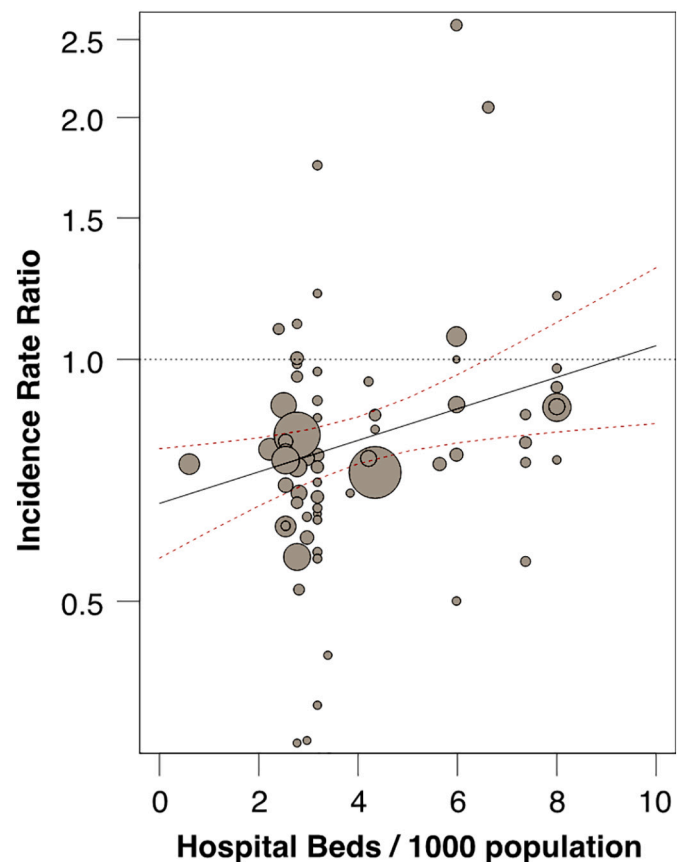
Test for Residual Heterogeneity:  $Q = 569.698, p < 0.0001$ .

collect information, ranging from solidly-structured national/multi-hospital registries, to quick surveys of a few hospitals, to even Twitter polls [42]. Perhaps not surprisingly, this approach yielded uncertainty, admission rates for STEMI ranging from an appalling >50% decrease [14–18], to modest changes or even a substantial increase [21–35].

Several factors may have contributed to the uncertainties about STEMI hospitalization data during COVID-19 pandemic. First, in the wake of the pandemic countless articles on COVID-19 appeared, raising concerns about lack of in-depth review; indeed, that in such a short time we retrieved as many as 79 reports, many of whom brief research letters, hints to this potential problem. Secondly, surveys launched “on the heat of the moment” might lack the depth and rigor found in solidly-structured, long-running registries. Thirdly, while registries have a stable referral base including most sites with certain characteristics, surveys only provide data on those hospitals that were asked, and agreed, to contribute. Fourthly, while the observation period was obviously centered around peak COVID-19, its width spanned differently across reports, while time periods chosen as reference could also differ. Finally, of even greater relevance, differences across countries in STEMI hospitalization might be traced to differences in the epidemiology of COVID-19 epidemic, lockdown measures, health organization policies.

In light of largely discrepant reports, these various factors indicate the need for a thorough, systematic assessment of the true impact of COVID-19 pandemic on STEMI hospitalizations. This information would have important implications in terms of understanding the consequences of SARS-CoV-2 infection not only at the level of individual patients, but also in terms of overall health care organization strategies, and ability to cope with farther-reaching consequences of a pandemic.

We specifically focused on STEMIs, for several reasons. First, it is a simple, unequivocal diagnosis, which can be easily reached “on the field”. Secondly, most countries had a centralized hub-and-spoke



**Fig. 3.** Impact of hospital bed availability per country on STEMI hospitalizations during COVID-19 pandemic.

Meta-regression of number of hospital beds/1000 inhabitants (X-axis) vs incidence rate ratio (IRR) of STEMI hospitalizations in each country during peak COVID-19 pandemic, relative to reference period (Y-axis). Circles represent individual studies; diameter is proportional to the inverse of the variance of the IRRs ( $p < 0.017$ ). See Table 2 for details.

Note the inverse relationship between bed availability and STEMI hospitalization, which stayed around historical levels in countries with greater bed availability, while it sharply decreased along with bed availability, suggesting an important role of health organization.

organization for STEMI management, which allows to keep track of cases, while changes in the organization of emergency medicine as a consequence of the pandemic are easily detectable. Finally, several long-running registries were already in place for STEMIs.

Through a large meta-analysis, we document a 20% decrease in STEMI hospitalizations during the first peak of COVID-19 pandemic, worldwide. While significant, this is a sobering finding compared to reports of dramatic, >50% decrease. At the same time, it curbs the relevance of reports showing instead no impact of COVID-19 on STEMI hospitalizations. Importantly, our meta-analysis may allay concerns attributable to data reporting. From our sub-analyses, around 20% decrease in STEMI hospitalizations was consistently seen regardless of data type (surveys vs. registries), timing of observation period (narrower or broader), or reference period. Furthermore, through STROBE approach we estimated the quality of reports to be high in 54.4% of publications; although it was moderate or low in 45.6% of publications, this did not have an impact on overall results.

At the same time, our analysis also shows some unexpected results. A major finding is the notable differences in STEMI admission rate in some countries. For example, >50% decrease was reported for Latin America; although this finding comes from a single report [15], it should not be dismissed lightly, as it is based on 1211 cases accrued from 79 hospitals in 19 countries. In contrast, other countries (e.g., France, Denmark,

Hong-Kong, Singapore, Taiwan) report no appreciable decrease in STEMI hospitalizations, which distinguishes them from their immediate neighboring countries, suggesting that differences in admissions could not be traced to geography or ethnicity. Furthermore, contrary to what might have been anticipated, COVID-related epidemiological metrics, and social policy parameters (e.g., lockdown measures), were not associated with different incidence of STEMI hospitalization across countries. Instead, different organization of emergency medicine programs and/or of hospital operation during the pandemic might have played a role.

For example, the hub-and-spoke organization dealing with STEMIs may have been subverted to address the exceptional hospital bed needs imposed by the COVID-19 pandemic. In some countries, many hospitals had been designated “COVID-only”, admitting only COVID-positive patients and shunting away all other patients, whereas other hospitals had been granted “COVID-free” status, thus admitting also patients usually referred to other hospitals. Consequently, data from either type of hospital may have shown disproportionately lower, or higher, admissions for STEMI than previously, just because of this change in admission strategy. This is reflected in the papers by Cosentino et al. [29], Trabattoni et al. [30] (from Italy), and Legutko et al. from Poland [35]; while reporting a large increase in STEMI admissions over the corresponding reference period (74%, 137%, and 106%, respectively), those authors specify that their emergency departments had been refitted to accept STEMIs from hospitals outside their network. Refitting, or conversely preclusion to accept STEMIs, may have occurred also in other hospitals, either way affecting historical comparison of STEMI admissions. Different implementation of this policy across countries, or variable sampling of such hospitals across reports, may have affected surveys.

In principle, it cannot be excluded that a real decrease in STEMI incidence occurred, as a consequence of in-home-bound subjects being less exposed to external triggers of acute coronary events (pollution, work-place stress), or achieving lower blood pressure or better medication compliance [43]. Conversely, it has been suggested that some STEMI patients simply did not present at the hospital. There has been much speculation about unintended consequences of “stay-at-home” orders which may have inadvertently resulted in patients not seeking medical care, or of COVID-19 health warnings making patients fearful of infection, thus avoiding hospital help [44,45]. Yet, our data indicate that COVID infection rate, or degree of lockdown measures did not influence STEMI hospitalization in the various countries.

Our data, instead, reveal that STEMI hospitalizations plummeted in countries with lower hospital bed availability, whereas they stayed around historical levels in countries with much greater bed availability, suggesting that hospital beds had been overwhelmed with COVID-19 patients, and/or that intensive/coronary care units had been converted into COVID intensive care beds. This interpretation is supported by recent data documenting -among possible causes for discrepant COVID-19 mortality across countries- that case-fatality rate associated with COVID-19 was negatively associated with number of hospital beds  $\times$  1000 inhabitants, similar to our findings [46,47]. Higher cases of out-of-hospital cardiac arrest during COVID-19 pandemic [48,49] lend further credence to the concerns about logistic hurdles (e.g., ambulance services overloaded with COVID-19 cases) being a factor behind reduced STEMI admission in some areas.

Collectively, these considerations indicate that public health strategies to cope with a pandemic, and overall health care organization, may be an issue of concern deserving further investigation.

## 5. Limitations

Our meta-analysis has limitations, inherent in data collected in the midst of a pandemic; however, through separate sub-analysis we could ascertain that findings from ad-hoc surveys were comparable to those obtained from solid registries. Also, differences in length or timing of

observation period did not affect the results, as most (55 out of 79) studies investigated a narrow time-window (Mid-February-April), which bracketed the first peak of COVID-19 pandemic. Finally, we analyzed bed availability data at country level, not at hospital level.

## 6. Conclusions

This large meta-analysis shows that STEMI hospitalizations decreased significantly during COVID-19 pandemic. However, the magnitude of the phenomenon was decidedly less than initially feared, and sometimes substantially different among countries. Proper functioning of hospital services, and of hub-and-spoke approach to STEMI, along with adequate public information, should be pursued to effectively deal with acute coronary events during a pandemic.

## Sources of funding

Supported in part by Italian Ministry of Health “Ricerca Corrente” funds to IRCCS MultiMedica, #01:02:00 “Diagnostica e terapia delle sindromi coronariche acute”, and #3.11 RCR 2020- 23670065 “Clinical and Imaging Biomarkers Associated With Plasma and Cellular Determinants of Cardiovascular Disease at the Time of Covid-19”.

## Author statement file

### Francesco Sofi

Substantial contributions to the design of the work;  
Drafting the work  
Final approval of the version to be published;  
Agreement to be accountable for all aspects of the work in ensuring that questions related to the accuracy or integrity of any part of the work are appropriately investigated and resolved.

### Monica Dinu

Substantial contributions to the acquisition of data for the work;  
Revising the work critically for important intellectual content;  
Final approval of the version to be published;  
Agreement to be accountable for all aspects of the work in ensuring that questions related to the accuracy or integrity of any part of the work are appropriately investigated and resolved.

### GianPaolo Reboldi

Substantial contributions to the analysis, or interpretation of data for the work;  
Drafting revising the work critically for important intellectual content;  
Final approval of the version to be published;  
Agreement to be accountable for all aspects of the work in ensuring that questions related to the accuracy or integrity of any part of the work are appropriately investigated and resolved.

### Fabrizio Stracci

Substantial contributions to the analysis of data for the work;  
Revising the work critically for important intellectual content;  
Final approval of the version to be published;  
Agreement to be accountable for all aspects of the work in ensuring that questions related to the accuracy or integrity of any part of the work are appropriately investigated and resolved.

### Roberto FE Pedretti

Substantial contributions to the interpretation of data for the work;

Revising the work critically for important intellectual content;  
Final approval of the version to be published;  
Agreement to be accountable for all aspects of the work in ensuring that questions related to the accuracy or integrity of any part of the work are appropriately investigated and resolved.

#### Serafina Valente

Substantial contributions to the interpretation of data for the work;  
Revising the work critically for important intellectual content;  
Final approval of the version to be published;  
Agreement to be accountable for all aspects of the work in ensuring that questions related to the accuracy or integrity of any part of the work are appropriately investigated and resolved.

#### GianFranco Gensini

Substantial contributions to the interpretation of data for the work;  
Revising the work critically for important intellectual content;  
Final approval of the version to be published;  
Agreement to be accountable for all aspects of the work in ensuring that questions related to the accuracy or integrity of any part of the work are appropriately investigated and resolved.

#### C Michael Gibson

Substantial contributions to the interpretation of data for the work;  
Revising the work critically for important intellectual content;  
Final approval of the version to be published;  
Agreement to be accountable for all aspects of the work in ensuring that questions related to the accuracy or integrity of any part of the work are appropriately investigated and resolved.

#### Giuseppe Ambrosio

Substantial contributions to the conception and design of the work, and interpretation of data.  
Drafting the work.  
Final approval of the version to be published;  
Agreement to be accountable for all aspects of the work in ensuring that questions related to the accuracy or integrity of any part of the work are appropriately investigated and resolved.

### Declaration of Competing Interest

All authors declare: no financial relationships with any organisations that might have an interest in the submitted work in the previous three years; no other relationships or activities that could appear to have influenced the submitted work.

### Appendix A. Supplementary data

Supplementary data to this article can be found online at <https://doi.org/10.1016/j.ijcard.2021.10.156>.

### References

- [1] J. Ohland, C. Warren-Gash, R. Blackburn, et al., Acute myocardial infarctions and stroke triggered by laboratory-confirmed respiratory infections in Denmark, 2010 to 2016, *Euro Surveill.* 25 (17) (2020) 1900199.
- [2] M. Barnes, A.E. Heywood, A. Mahimbo, B. Rahman, A.T. Newall, C.R. Macintyre, Acute myocardial infarction and influenza: a meta-analysis of case-control studies, *Heart* 101 (21) (2015) 1738–1747.
- [3] J.C. Kwong, K.L. Schwartz, M.A. Campitelli, et al., Acute myocardial infarction after laboratory-confirmed influenza infection, *N. Engl. J. Med.* 378 (4) (2018) 345–353.
- [4] R. Blackburn, H. Zhao, R. Pebody, A. Hayward, C. Warren-Gash, Laboratory-confirmed respiratory infections as predictors of hospital admission for myocardial infarction and stroke: time-series analysis of english data for 2004–2015, *Clin. Infect. Dis.* 67 (1) (2018) 8–17.
- [5] C. Warren-Gash, R. Blackburn, H. Whitaker, J. McMenamin, A.C. Hayward, Laboratory-confirmed respiratory infections as triggers for acute myocardial infarction and stroke: a self-controlled case series analysis of national linked datasets from Scotland, *Eur. Respir. J.* 51 (3) (2018) 1701794.
- [6] M. Madjid, C.C. Miller, V.V. Zarubaev, et al., Influenza epidemics and acute respiratory disease activity are associated with a surge in autopsy-confirmed coronary heart disease death: results from 8 years of autopsies in 34,892 subjects, *Eur. Heart J.* 28 (10) (2007) 1205–1210.
- [7] N. Tang, D. Li, X. Wang, Z. Sun, Abnormal coagulation parameters are associated with poor prognosis in patients with novel coronavirus pneumonia, *J. Thromb. Haemost.* 18 (4) (2020) 844–847.
- [8] L. Bowles, S. Platton, N. Yartey, et al., Lupus anticoagulant and abnormal coagulation tests in patients with Covid-19, *N. Engl. J. Med.* 383 (3) (2020) 288–290.
- [9] B. Bikdeli, M.V. Madhavan, D. Jimenez, et al., COVID-19 and thrombotic or thromboembolic disease: implications for prevention, antithrombotic therapy, and follow-up, *J. Am. Coll. Cardiol.* 75 (23) (2020) 2950–2973.
- [10] S.X. Gu, T. Tyagi, K. Jain, et al., Thrombocytopenia and endotheliopathy: crucial contributors to COVID-19 thromboinflammation, *Nat. Rev. Cardiol.* 18 (3) (2021) 194–209.
- [11] A. Blasco, M.J. Coronado, F. Hernández-Terciado, et al., Assessment of neutrophil extracellular traps in coronary thrombus of a case series of patients with COVID-19 and myocardial infarction, *JAMA Cardiol.* 29 (2020 Dec), e207308, <https://doi.org/10.1001/jamacardio.2020.7308>.
- [12] Y.Y. Zheng, Y.T. Ma, J.Y. Zhang, X. Xie, COVID-19 and the cardiovascular system, *Nat. Rev. Cardiol.* 17 (5) (2020) 259–260.
- [13] Z. Varga, A.J. Flammer, P. Steiger, et al., Endothelial cell infection and endotheliitis in COVID-19, *Case Rep. Lancet* 395 (10234) (2020) 1417–1418.
- [14] A.S. Bhatt, A. Moscone, E.E. McElrath, et al., Fewer hospitalizations for acute cardiovascular conditions during the COVID-19 pandemic, *J. Am. Coll. Cardiol.* 76 (3) (2020) 280–288.
- [15] J. Mayol, C. Artucio, I. Batista, et al., An international survey in Latin America on the practice of interventional cardiology during the COVID-19 pandemic, with a particular focus on myocardial infarction, *Neth. Heart J.* 28 (7–8) (2020) 424–430.
- [16] M. Hauguel-Moreau, R. Pillière, G. Prati, et al., Impact of Coronavirus Disease 2019 outbreak on acute coronary syndrome admissions: four weeks to reverse the trend, *J. Thromb. Thrombolysis* 51 (1) (2021) 31–32.
- [17] V. Cammalleri, S. Muscoli, D. Benedetto, et al., Who has seen patients with ST-segment-elevation myocardial infarction? First results from Italian real-world coronavirus disease 2019, *J. Am. Heart Assoc.* 9 (19) (2020), e017126, <https://doi.org/10.1161/JAHA.120.017126>.
- [18] A. Félix-Oliveira, Almeida M. de Sousa, J. Ferreira, et al., Caring for cardiac patients amidst the SARS-CoV-2 pandemic: the scrambled pieces of the puzzle, *Rev. Port. Cardiol.* 39 (5) (2020) 299–301.
- [19] H.M. Krumholz, Where Have All the Heart Attacks Gone? *The New York Times*, April 6, 2020.
- [20] S. Wood, The Mystery of the Missing STEMIs During the COVID-19 Pandemic. <https://www.tctmd.com/news>, April 02, 2020.
- [21] K. Matsushita, S. Hess, B. Marchandot, et al., Clinical features of patients with acute coronary syndrome during the COVID-19 pandemic, published online ahead of print, 2020 Nov 16, *J. Thromb. Thrombolysis* (2020) 1–10.
- [22] M.D. Solomon, E.J. McNulty, J.S. Rana, et al., The Covid-19 pandemic and the incidence of acute myocardial infarction, *N. Engl. J. Med.* 383 (7) (2020) 691–693.
- [23] C.C.F. Tam, K.S. Cheung, S. Lam, et al., Impact of coronavirus disease 2019 (COVID-19) outbreak on outcome of myocardial infarction in Hong Kong, China, *Catheter. Cardiovasc. Interv.* 97 (2) (2021) E194–E197.
- [24] E. Zitelny, N. Newman, D. Zhao, STEMI during the COVID-19 pandemic – an evaluation of incidence, *Cardiovasc. Pathol.* 48 (2020) 107232, <https://doi.org/10.1016/j.carpath.2020.107232>.
- [25] R. Montagnon, L. Rouffilange, G. Agard, P. Benner, N. Cazes, A. Renard, Impact of the COVID-19 pandemic on emergency department use: focus on patients requiring urgent revascularization, *J. Emerg. Med.* 60 (2) (2021) 229–236.
- [26] A.S. Lotfi, A. Capatina, A.D. Kugelmass, Assessment of ST-segment elevation myocardial infarction volume trends during the COVID-19 pandemic, *Am. J. Cardiol.* 131 (2020) 132–133.
- [27] M. Rattka, M. Baumhardt, J. Dreyhaupt, et al., 31 days of COVID-19—cardiac events during restriction of public life—a comparative study, *Clin. Res. Cardiol.* 109 (12) (2020) 1476–1482.
- [28] M. Gramegna, L. Baldetti, A. Beneduce, et al., ST-segment-elevation myocardial infarction during COVID-19 pandemic: insights from a regional public service healthcare hub, *Circ. Cardiovasc. Interv.* 13 (8) (2020), e009413.
- [29] N. Cosentino, A.L. Bartorelli, G. Marenzi, Time to treatment still matters in ST-elevation myocardial infarction: a call to maintain treatment effectiveness during the COVID-19 pandemic, *Eur. Heart J.* 6 (6) (2020) 408–409.
- [30] D. Trabattini, P. Montorsi, L. Merlino, Late STEMI and NSTEMI patients' emergency calling in COVID-19 outbreak, *Can. J. Cardiol.* 36 (7) (2020) 1161.e7–1161.e8, <https://doi.org/10.1016/j.cjca.2020.05.003>.
- [31] B. Popovic, J. Varlot, P.A. Metzendorf, H. Jeulin, F. Goehringer, E. Camenzind, Changes in characteristics and management among patients with ST-elevation myocardial infarction due to COVID-19 infection, published online ahead of print, 2020 Jul 15, *Catheter. Cardiovasc. Interv.* (2020), <https://doi.org/10.1002/ccd.29114>.



- [32] L. Østergaard, J.H. Butt, K. Kragholm, et al., Incidence of acute coronary syndrome during national lock-down: insights from nationwide data during the Coronavirus disease 2019 (COVID-19) pandemic, *Am. Heart J.* 232 (2021) 146–153.
- [33] N.W. Chew, C.-H. Sia, H.-L. Wee, et al., Impact of the COVID-19 pandemic on door-to-balloon time for primary percutaneous coronary intervention — results from the Singapore Western STEMI Network, *Circ. J.* 85 (2) (2021) 139–149.
- [34] T.A. Hammad, M. Parikh, N. Tashtish, et al., Impact of COVID-19 pandemic on ST-elevation myocardial infarction in a non-COVID-19 epicenter, Catheter. Cardiovasc. Interv. 97 (2) (2021) 208–214.
- [35] J. Legutko, L. Niewiara, S. Bartuś, et al., Decline in the number of coronary angiography and percutaneous coronary intervention procedures in patients with acute myocardial infarction in Poland during the coronavirus disease 2019 pandemic, *Kardiol. Pol.* 78 (6) (2020) 574–576.
- [36] E. von Elm, D.G. Altman, M. Egger, et al., The Strengthening the Reporting of Observational Studies in Epidemiology (STROBE) statement: guidelines for reporting observational studies, *J. Clin. Epidemiol.* 61 (4) (2008) 344–349, <https://doi.org/10.1016/j.jclinepi.2007.11.008>.
- [37] Our World in Data, available at <https://ourworldindata.org/>.
- [38] World Bank database, available at <https://datacatalog.worldbank.org/>.
- [39] Human Development Reports, Statistical Update Technical Notes, Available at, [http://hdr.undp.org/sites/default/files/hdr2018\\_technical\\_notes.pdf](http://hdr.undp.org/sites/default/files/hdr2018_technical_notes.pdf), 2018.
- [40] T. Hale, N. Angrist, R. Goldszmidt, et al., A global panel database of pandemic policies (Oxford COVID-19 Government Response Tracker), *Nat. Hum. Behav.* 5 (2021) 529–538.
- [41] S. Achilleos, A. Quattrocchi, J. Gabel, A. Heraclides, O. Kokotroni, C. Constantinou, et al., Excess all-cause mortality and COVID-19 related mortality: a temporal analysis in 22 countries, from January until August 2020, *Int. J. Epidemiol.* (2021 Jul 20), <https://doi.org/10.1093/ije/dyab123>.
- [42] S. Ashraf, S. Ilyas, M.C. Alraies, Acute coronary syndrome in the time of the COVID-19 pandemic, *Eur. Heart J.* 41 (2020) 2089–2091.
- [43] R. Tanner, P. MacDaragh Ryan, N.M. Caplice, COVID-19: where have all the STEMIs gone? *Can. J. Cardiol.* 36 (7) (2020) (1161.e9e1161.e10).
- [44] M. Katsoulis, M. Gomes, A.G. Lai, et al., Estimating the effect of reduced attendance at emergency departments for suspected cardiac conditions on cardiac mortality during the COVID-19 pandemic, *Circ. Cardiovasc. Qual. Outcomes* 14 (1) (2021), e007085.
- [45] G. Onder, P.P. Olimpieri, C. Celant, on behalf of AIFA Monitoring Registries Group, et al., Under-prescription of direct oral anticoagulants for treatment of non-valvular atrial fibrillation and venous thromboembolism in the COVID-19 lockdown period, *Eur. J. Prev. Cardiol.* (2021), <https://doi.org/10.1093/eurjpc/zwab096>.
- [46] G. Sorci, B. Faivre, S. Morand, Why does COVID-19 case fatality rate vary among countries?, in: *The Lancet Infectious Diseases*, 2021. Available at SSRN.
- [47] G. Sorci, B. Faivre, S. Morand, Explaining among-country variation in COVID-19 case fatality rate, *Sci Rep.* 10 (1) (2020 Nov 3) 18909, <https://doi.org/10.1038/s41598-020-75848-2> (PMID: 33144595; PMCID: PMC7609641).
- [48] E. Baldi, G.M. Sechi, C. Mare, et al., Lombardia CARE researchers. Out-of-hospital cardiac arrest during the Covid-19 outbreak in Italy, *N. Engl. J. Med.* 383 (5) (2020) 496–498.
- [49] P.H. Lai, E.A. Lancet, M.D. Weiden, et al., Characteristics associated with out-of-hospital cardiac arrests and resuscitations during the novel coronavirus disease 2019 pandemic in New York City, *JAMA Cardiol.* 5 (10) (2020) 1154–1163.