

REVIEW

Open Access

Insulin receptor signaling in the development of neuronal structure and function

Shu-Ling Chiu¹, Hollis T Cline^{2*}

Abstract

Sensory experience plays a crucial role in regulating neuronal shape and in developing synaptic contacts during brain formation. These features are required for a neuron to receive, integrate, and transmit signals within the neuronal network so that animals can adapt to the constant changing environment. Insulin receptor signaling, which has been extensively studied in peripheral organ systems such as liver, muscle and adipocyte, has recently been shown to play important roles in the central nervous system. Here we review the current understanding of the underlying mechanisms that regulate structural and functional aspects of circuit development, particularly with respect to the role of insulin receptor signaling in synaptic function and the development of dendritic arbor morphology. The potential link between insulin receptor signaling malfunction and neurological disorders will also be discussed.

Introduction

The human brain is made up of billions of neurons assembled into sophisticated circuits. Information received from sensory neurons is processed by neurons within distinct circuits to generate specific functional outputs, including cognitive decisions and behavior. A fascinating problem is how these huge numbers of neurons establish precise connections to assemble complex circuits during development. The neuron, the functional unit of the brain circuit, is a highly specialized cell composed of the cell body, the dendrite and the axon. The structure of the dendrite determines where and how an individual neuron can receive and integrate information from afferent neurons, whereas the morphology of the axon determines where processed information is sent to efferent neurons. Sites of contacts between the axon and dendrite, or synapses, mediate communication between neurons for proper information flow within the neuronal circuit. We will first review the current understanding of cellular and molecular mechanisms underlying synapse and dendrite development, then focus on recent evidence suggesting a function for insulin receptor signaling in circuit function and pathological brain diseases.

Synapse and dendrite development

Synapse development

The number of synaptic contacts and the efficacy of synaptic transmission in the brain are dynamic throughout development and adulthood [1-3]. These dynamics are crucial for neurons to optimize connections in brain circuits during development. Synaptic plasticity is also important to optimize neuronal function in adults, for example, to adapt to our changing environment and to allow memories to form. Synapse development is a series of distinct processes, including synapse formation, synapse maturation and synapse maintenance. The mechanisms that regulate each of these processes are just starting to be unraveled.

Synapse formation

Synapses are specialized junctions between neurons where the presynaptic axon terminal is packed with synaptic vesicles and vesicle release machinery and the postsynaptic dendritic specialization contains transmembrane neurotransmitter receptors, scaffold proteins and signaling machinery (Figure 1A; see [4] for detailed review). Time-lapse imaging in both *in vivo* and *in vitro* preparations revealed that the temporal sequence of synapse formation is quite rapid. The first step involves the contact between dendrites and axons, which likely occurs by adhesive mechanisms. Second, the presynaptic specialization assembles quickly at sites of contact [5,6]. In fact, it is thought that components of the presynaptic

* Correspondence: cline@scripps.edu

²Departments of Cell Biology and Chemical Physiology, The Scripps Research Institute, 10550 North Torrey Pines Road, La Jolla, CA 92037, USA

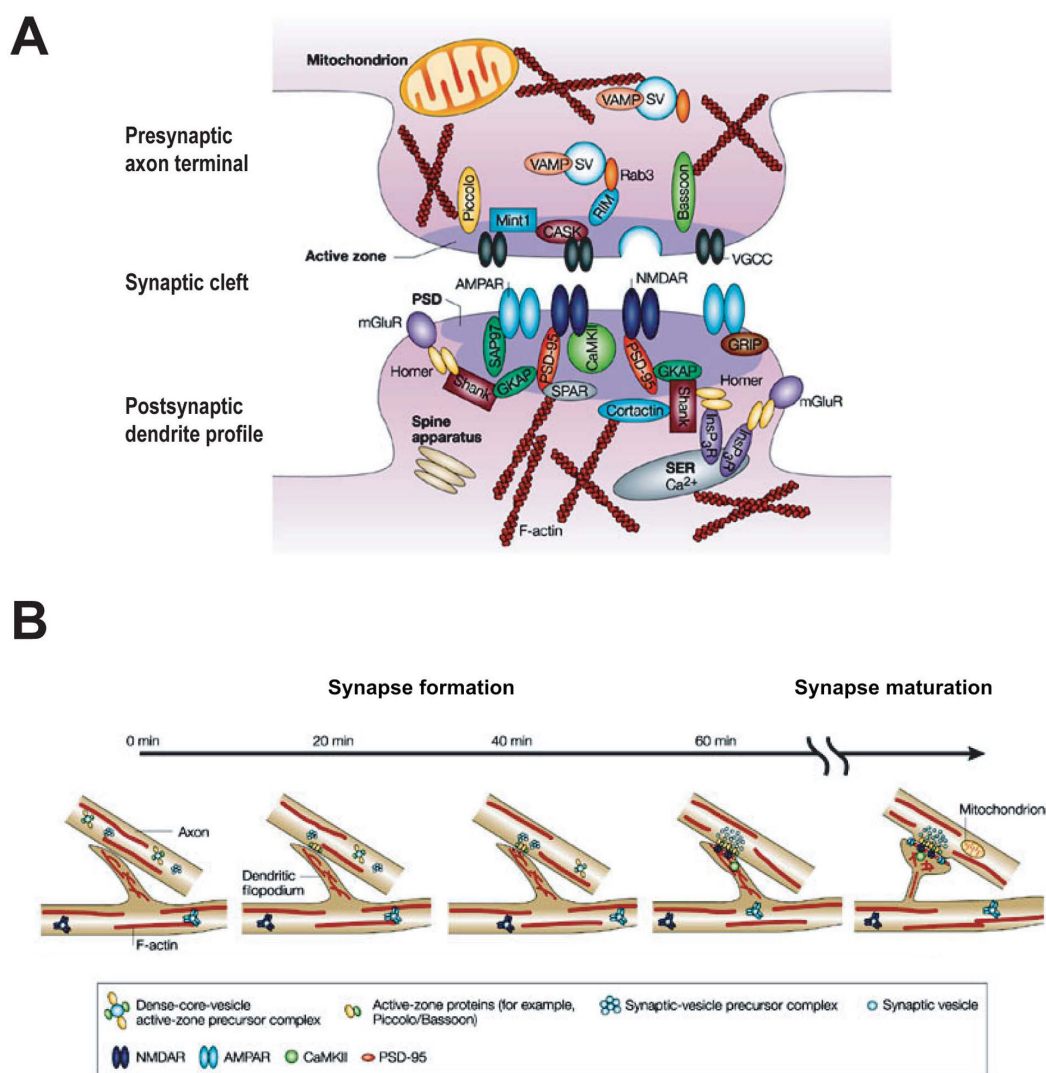


Figure 1 Schematic diagram of an excitatory synapse and the temporal sequence of synapse formation and maturation. (A) Synapses are specialized junctions between neurons composed of complex membrane and proteins. A synapse can be divided structurally into three parts: a presynaptic axon terminal packed with synaptic vesicles (SV) and release machinery, a synaptic cleft, and a postsynaptic dendritic counterpart filled with neurotransmitter receptors, scaffold proteins and signaling machinery. **(B)** Synapse formation is initiated by the contact between dendrites and axons, followed by the recruitment of presynaptic and postsynaptic specializations. Increases in synapse size and synaptic strength by accumulation of AMPA receptors at synapses are characteristics of synapse maturation. AMPAR, α -amino-3-hydroxy-5-methyl-4-isoxazole propionic acid receptor; CaMKII, Calcium calmodulin dependent kinase type II; CASK, calcium calmodulin-dependent serine kinase; GKAP, guanylate kinase-associated protein; GRIP, glutamate receptor-interacting protein; InsP₃R, inositol triphosphate receptor; mGluR, metabotropic glutamate receptor; NMDAR, N-methyl-D-aspartate receptor; PSD, postsynaptic density; PSD-95, postsynaptic density protein-95; RIM, Rab3-interacting molecule; SAP, synapse-associated protein; SER, smooth endoplasmic reticulum; SPAR, spine-associated Rap GTPase activating protein; VAMP, vesicle-associated membrane protein; VGCC, voltage-gated calcium channel. (Adapted and modified from [4]).

specialization are present in axons before synaptogenesis as packets of vesicle proteins and components of the active zone proteins [7,8]. Finally, the postsynaptic specialization, including the proteins postsynaptic density-95 (PSD-95), and neurotransmitter receptors, including N-methyl-D-aspartate (NMDA) receptors, are thought to arrive somewhat later during synapse formation (Figure 1B) [9]. Although the assembly of synapses is a

complex process, recent work has identified several molecules that are important in different steps of synapse formation [7,10]. For example, molecules that are present in gradients within target regions, such as ephrins, play an important role in directing axons and dendrites to the correct brain regions [11,12]. Adhesion molecules, such as cadherin, are thought to be important in establishing of the initial axodendritic contacts [13,14]. Some

transsynaptic molecules, such as neuroligin and neurexin, are crucial in bidirectional signaling and the recruitment of both pre- and postsynaptic proteins to new synapses [15,16]. In addition to molecular players, neuronal activity appears to be another key regulator in the formation of nascent synapses [17-20].

Synapse maturation

Synapse maturation is characterized by an increase in the morphological size and transmission strength of the synapse, which includes changes in both the presynaptic axon terminal and the postsynaptic dendrite. From the presynaptic point of view, a prominent ultrastructural feature of synaptic maturation is the increase in the number of synaptic vesicles per terminal [21-23], which likely contributes to the increase in probability of transmitter release in mature synapses [17]. Transmission at immature glutamatergic synapses is mainly mediated by NMDA receptors, which shift their kinetics by replacing NMDA receptor subunit 2B-containing receptors with NMDA receptor subunit 2A-containing receptors [24,25]. These immature synapses can be silent or have low synaptic strength at resting membrane potentials because of voltage-dependent magnesium blockade of the NMDA receptor. As the synapses mature, α -amino-3-hydroxy-5-methyl-4-isoxazole propionic acid (AMPA) receptors are recruited to the postsynaptic membrane, and in addition to NMDA receptors, provide fully functional glutamatergic synaptic transmission [26-29]. Neuronal activity reportedly induces synapse maturation by promoting the incorporation of NMDA receptor subunit 2A-containing NMDA receptors into synaptic sites. Furthermore, activity recruits AMPA receptors to the postsynaptic site to activate silent synapses and increase the strength of synaptic transmission (Figure 1B) [4,26,27].

Synapse maintenance or synapse elimination

The precise connectivity required for circuit function relies not only on the formation of new contacts but also the maintenance of the correct synapses. In fact, the density of synapses formed at early stages of development is far greater than the density retained at later stages, indicating that only selective synapses are stabilized and maintained during development [30]. The importance of synapse maintenance is well documented at the neuromuscular junction, where each muscle fiber is temporarily innervated by multiple motor axons but only one input becomes stabilized while others are eliminated [31,32]. A reduction in synapse density has also been demonstrated in various regions of the central nervous system (CNS) [33-37], suggesting synapse elimination could be a common process for refining the brain circuits during development. For instance, climbing fiber to Purkinje cell synapses in cerebellum undergo synapse elimination at early postnatal ages in mammals.

Although the detailed mechanisms regulating synapse elimination and maintenance remain largely unknown, neuronal activity appears to contribute to the maintenance of correct synapses while weaker synapses are usually eliminated [34,38,39]. Additionally, molecular players such as insulin-like growth factor (IGF)-2, complement protein 1q, major histocompatibility complex protein, protein kinase C γ , metabotropic glutamate receptor subtype 1, and glutamate receptor (GluR) delta 2 subunit reportedly regulate synapse maintenance or elimination [40-45].

Dendrite development

The architecture of the dendritic arbor contributes to the precise patterning of synaptic connections required for normal circuit function. Dendritic structure not only determines which axons are potential presynaptic partners, but also determines how the inputs are integrated. The marriage of single cell labeling and *in vivo* time-lapse imaging has made it possible to explore the cellular mechanisms underlying dendritic development [19,20,46,47]. Advances in microscopy, cell biology and molecular genetic methods have paved the way for significant advances in our understanding of the mechanisms behind the molecular and activity-dependent regulation of dendrite development.

Cellular mechanisms

Imaging optic tectal neurons *in vivo* in *Xenopus* tadpoles showed that dendritic arbor elaboration goes through distinct phases (Figure 2A) [19,48]. Many newly differentiated neurons first undergo axonogenesis with only little elaboration of the dendritic arbor. About one day after evidence of morphological differentiation, neurons go into a rapid dendritic arbor growth phase for a few days until they enter the third phase, characterized by a slower dendritic arbor growth rate and more stable dendritic arbors. During the rapid dendritic arbor growth period, one might think that the growth of the dendritic arbor can be easily achieved by continuously lengthening pre-existing dendrites and sprouting new dendritic branches; however, time-lapse imaging at intervals of minutes to hours reveals that dendritic growth is highly dynamic, consisting of not only branch addition and extension, but also retraction and loss of dendritic branches (Figure 2B) [18,49-52]. It is worth noting that these dynamics in dendritic morphogenesis persist in mature neurons when their overall structure is stable, although at a slower rate [20,53-55]. Therefore, it is very likely that mechanisms that regulate dendritic dynamics early during development may also play a role in dendritic plasticity later in life.

Molecular mechanisms

Mechanisms that regulate cytoskeleton architecture play a crucial role in shaping dendritic arbors because the

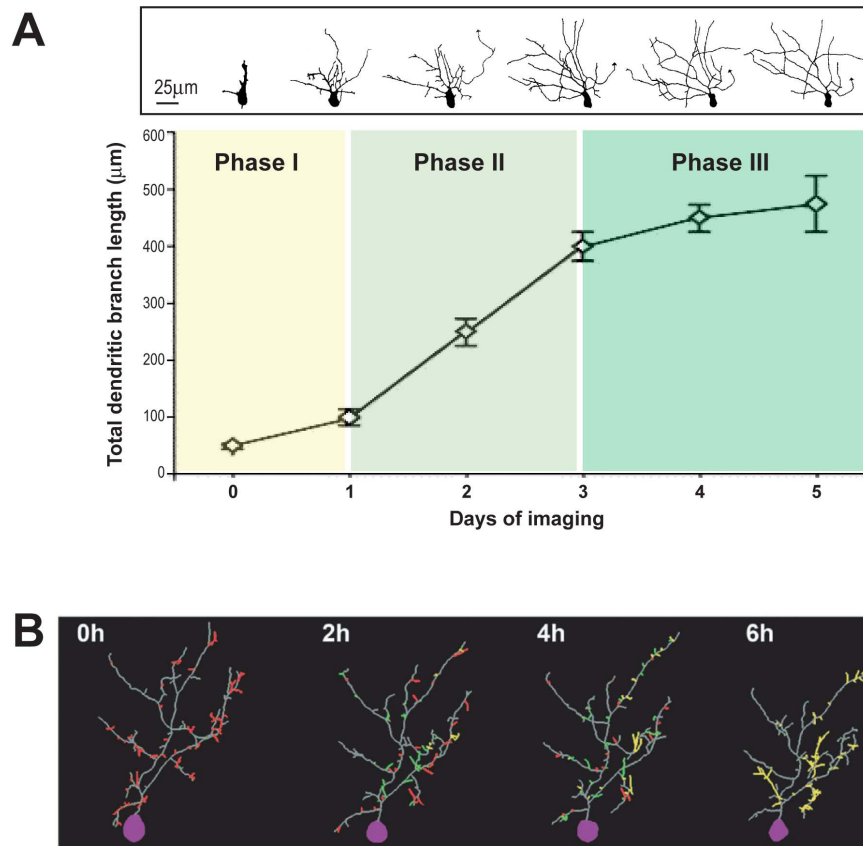


Figure 2 Dendritic arbor growth and dynamics. (A) Dendrite development can be divided into three phases: phase I, the cell differentiates and extends an axon with little elaboration of the dendritic arbor; phase II, the dendritic arbor grows rapidly; phase III, the dendritic arbor grows slowly and appears stable. Reconstruction of the same tectal neuron imaged *in vivo* daily for 5 days is shown on top. (Adapted and modified from [19,48].) (B) Dendritic growth is highly dynamic as revealed by time-lapse imaging at 2-hour intervals over a 6-hour imaging period. Stable branches, retracted branches, transient branches, and added branches are shown in gray, red, green and yellow, respectively. Cell bodies are shown in purple. (Adapted from [52].)

cytoskeleton provides the fundamental support of the dendritic structure. Filopodia are thin, highly motile actin-based protrusions and some of them are transformed into more stable microtubule-based dendritic branches. The Rho family of small GTPases, including Rac, RhoA, and Cdc42, regulate the rearrangement of cytoskeleton and participate in distinct aspects of dendrite morphogenesis [56,57]. For example, Rac and Cdc42 activity promote dendritic arbor dynamics by increasing the rate of actin polymerization, whereas increased RhoA activity inhibits dendritic arbor growth in *Xenopus* tectal neurons [57]. Consistently, several guanine exchange factors that activate Rac, such as Tiam1 [58] and STEF [14,59,60], have been shown to regulate neurite formation whereas Rho-specific guanine exchange factors, such as KIAA0380 [14], and Rho-specific GTPase activating proteins, such as p190 RhoGAP [61], which activate or inactivate Rho, respectively, have been shown to regulate neurite retraction [14,59,60] *in*

vitro. Interestingly, there is considerable crosstalk among these Rho GTPases. RhoA activity was increased by Rac activation and Cdc42 inhibition, whereas Rac was inhibited by activation of Rho in *Xenopus* tectal neurons *in vivo* [62]. This tight cross-regulation of Rho GTPases seems to work together to determine the structure of the dendritic tree. What controls the activity of Rho GTPases is a key question to understand the underlying mechanisms in dendritic morphogenesis.

In the *Xenopus* visual system visual activity promotes dendritic arbor growth through mechanisms that require both glutamate receptor activity and Rho GTPase activity in *Xenopus* tectal neurons [63]. Accordingly, the working hypothesis is that glutamate receptor activity promotes dendritic growth by elevating Rac and Cdc42 activities, leading to increased branch dynamics, and concurrently decreasing RhoA activity to relieve its inhibition on branch extension [63]. In addition to Rho GTPases, several other molecular mechanisms, including

signaling through neurotrophins [64,65], CPG15 [66] and calcium calmodulin dependent kinase type II [67], or local protein synthesis, mediated by cytoplasmic polyadenylation [47], have been shown to regulate dendritic arbor development in an activity-dependent manner. These data suggest that dendritic arbor growth is organized by signals from their surrounding environment.

Synaptic function and dendritic development

During circuit development, the increase in synapse number and synaptic strength occur concurrently with the elaboration of dendritic arbors, suggesting a coordinated regulation of synaptic function and dendritic development. Almost two decades ago, Vaughn first proposed the 'synaptotrophic hypothesis', which states that the stabilization of synapses might stabilize the dendritic branches and thereby explain the coordinated development of synapses and dendritic arbors [68]. Recent research has provided new supporting evidence for this hypothesis. Adhesion molecules, which play important roles in the initial assembly and stabilization of the synapses, regulate dendritic arbor development in mammals and flies [69,70]. Moreover, live imaging of synapse formation and dendrite growth in zebrafish showed that the presence of the synapses associated with the stabilization of terminal dendrites [71]. On the other hand, blockade of synaptic transmission or synapse maturation reduces dendritic arbor elaboration and blocks activity-dependent dendritic growth in *Xenopus* [18,50,52,63,72]. It is interesting to note that decreasing GABAergic transmission also changes the pattern of dendritic arbor growth and blocks visual experience-dependent structural plasticity [73]. These data suggest that synaptic contacts and synaptic transmission regulate the growth and elaboration of complex dendritic arbors in sculpting circuit function during development.

The insulin receptor

The insulin receptor is a receptor tyrosine kinase well studied with regard to its function in the regulation of peripheral glucose metabolism. Although expression of the insulin receptor in the brain was discovered decades ago [74,75], insulin receptor function in this classic 'insulin-insensitive' organ remains largely unknown. Recent studies in neuronal cell culture suggest that insulin receptor signaling regulates several neuronal functions, including spine density and neurite growth [76,77]; however, the role of insulin receptor signaling in controlling structure and function of CNS circuit development has not yet been widely explored *in vivo*.

Structure and signaling of the insulin receptor in peripheral tissues

The insulin receptor was first found as a homodimer, with extrinsic disulfide bonds to generate the functional

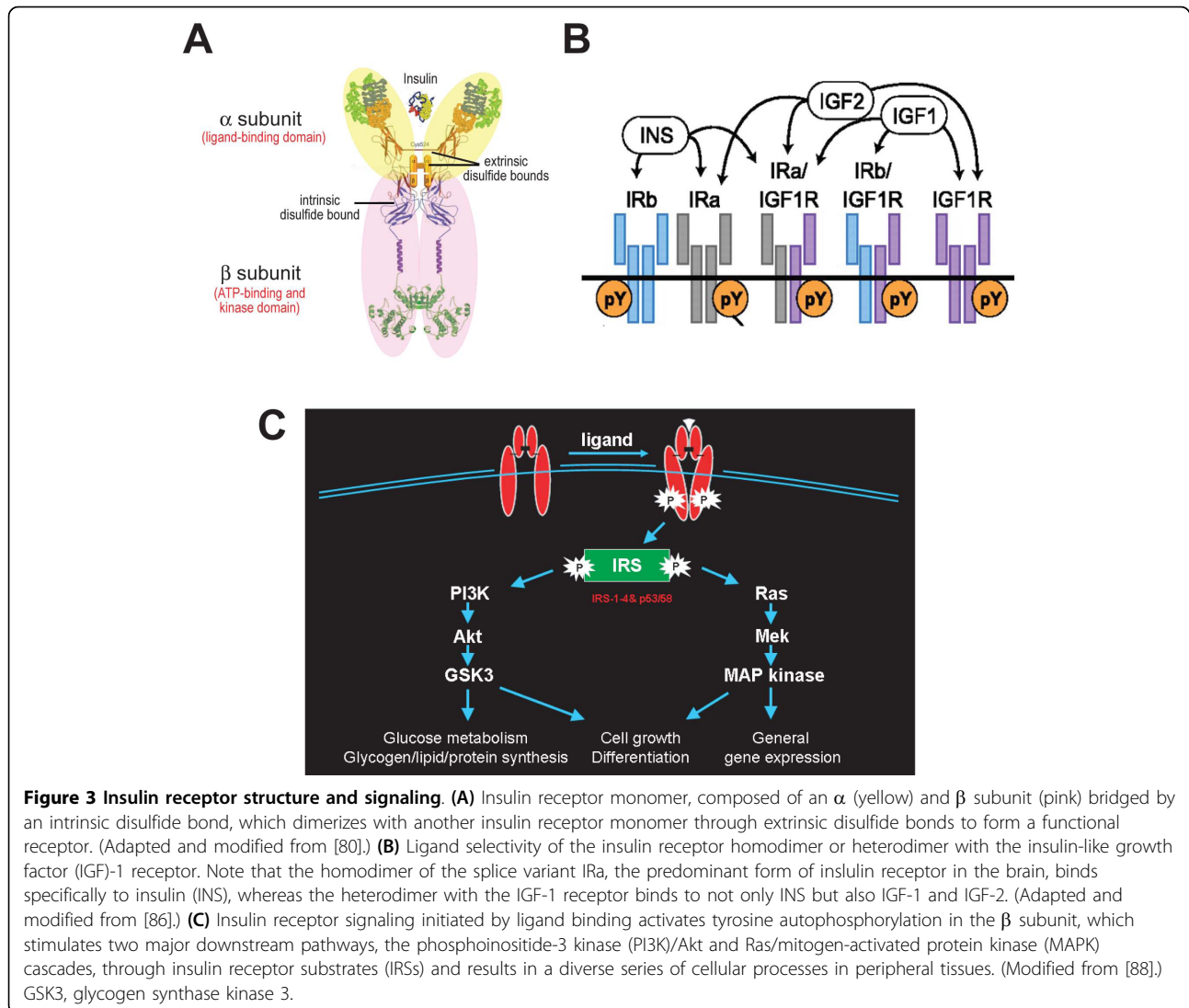
receptor. Each monomer of the insulin receptor is composed of one α and one β subunit bridged by an intrinsic disulfide bond [78,79]. The 135-kDa α subunit is the extracellular ligand binding portion, whereas the 95-kDa β subunit consists of an extracellular, a single transmembrane, and an intracellular kinase domain. Ligand binding to the α subunits activates the intrinsic kinase activity located in the β subunits and subsequently initiates a cascade of phosphorylation events that leads to different biological functions (Figure 3A) [80].

Crystal structures of the unphosphorylated and phosphorylated kinase domains of the insulin receptor have provided detailed information on how insulin receptor kinase activity is initiated. The kinase domain is composed of two lobes, the amino- and carboxy-terminal lobes, with an activation loop in between. In the unphosphorylated state, the activation loop traverses the cleft between two lobes such that both ATP binding and protein substrate-binding sites are blocked. More specifically, while residues in the beginning of the activation loop restrict the access of ATP to its binding sites on the insulin receptor, tyrosine 1162, one of the three phosphorylation sites in the activation loop, binds to the active site and competes with the kinase substrates [81]. Autophosphorylation of tyrosine 1158, 1162 and 1163 in the activation loop of the kinase domain causes rearrangement of the activation loop and reorientation of the amino- and carboxy-terminal lobes of the kinase, which is necessary for productive ATP binding. Tyrosine 1163 is the key phosphotyrosine in stabilizing the conformation of this phosphorylated activation loop, whereas tyrosine 1158 is accessible for interaction with downstream signaling proteins [81]. The knowledge of insulin receptor structure not only provides valuable understanding on how insulin receptor signaling is transduced but also allows functional analysis following the generation of various mutants of the putative ATP binding site or phosphorylation sites [82-85].

Unlike other receptor tyrosine kinases, most functions of the insulin receptor require accessory molecules known as insulin receptor substrates (IRSs) - for example IRS1-4- to engage multiple downstream signaling [86,87]. Two major cellular signaling pathways, phosphoinositide-3 kinase (PI3K)/Akt and the Ras/mitogen-activated protein kinase (MAPK) pathways, can be activated by the kinase activity of insulin receptor. These cascades regulate diverse cellular processes, such as gene expression, protein synthesis, and vesicle trafficking, which result in the regulation of glucose, lipid and protein metabolism, cell growth and differentiation (Figure 3C) [88,89].

Diversity of the insulin receptor

Although the insulin receptor is encoded by one single gene, various processes give rise to considerable



diversity in its protein structure and function. First, alternative splicing produces two isoforms of insulin receptor, IRa, an exon-11 lacking form, and IRb, an exon-11 containing form in a tissue-specific manner. Moreover, post-translational glycosylation contributes to different modifications of these receptors in different cell types or tissues [90]. Furthermore, assembly of hybrids between different isoforms and heterodimers with homologous IGF-1 receptor results in further diversity [91,92]. Although different ligand binding affinity and selectivity have been reported for insulin receptors, the physiological significance of the splice variance, post-translational modification and homo- or heterodimerization between different insulin receptors and IGF-1 receptor remain largely unknown (Figure 3B) [86,93]. Neurons have mainly the IRa isoform with less glycosylation compared to glial cells or peripheral tissues [94]. The different properties of neuronal insulin

receptors might suggest different roles of insulin receptors in the CNS. Interestingly, IRa binds insulin or IGF-2 with comparable affinity [95] and hybrids of IRa with the IGF-1 receptor binds IGF-1, IGF-2 and insulin with similar affinity [86,93]. Taken together, these data suggest that, in addition to insulin, IGF-1 and IGF-2 are potential ligands for the insulin receptor in the brain. The capability of neuronal insulin receptors to interact with various ligands suggests that insulin receptors may play versatile functions in the CNS.

In contrast to other species, *Xenopus laevis* has two insulin receptor genes, which we isolated from brain cDNA libraries. At the nucleotide level, these two *Xenopus* brain insulin receptors are highly similar to each other (93.6% identity) and are splice variants homologous to a human brain isoform of insulin receptor lacking exon-11 [96]. At the amino acid level, the corresponding peptides of these two *Xenopus* insulin

receptors, termed IR1 and IR2, share overall 95% identity and 97% similarity. Since only one insulin receptor gene has been reported in human or other vertebrates, the two copies of insulin receptor genes potentially result from the tetraploid nature of the *X. laevis* genome [97]. Alignment of the amino acid sequence of *IR1*, the more abundant *Xenopus* insulin receptor, with other species showed that the *Xenopus* insulin receptor shares overall identities of 70%, 69% and 69% with those of human, rat and mouse, respectively (Figure 4). Detailed alignments of different domains of insulin receptor further revealed that the kinase domain of the *Xenopus* insulin receptor shares the highest identity of 87 to 88% with that of human, rat and mouse compared to other regions (Figure 4). In addition, the potential ATP binding site and phosphorylation sites on the activation loop of the kinase domain [81] are remarkably identical to those of human, rat and mouse, suggesting that these amino acids may play a functional role in insulin receptor action and thus are well conserved in evolution. This also suggests that it is suitable to be mutated for studying insulin receptor function *in vivo*.

Expression pattern of insulin receptor in the brain

The insulin receptor is distributed in a widespread, but selective, pattern in the brain, including olfactory bulb, cerebral cortex, hypothalamus, hippocampus and cerebellum as reported in rodents [74,75,90]. The expression level of the insulin receptor is developmentally regulated, being higher at early stages and lower in the adult. At the cellular level, the insulin receptor is enriched in neurons compared to glia [74]. Subcellularly, the insulin receptor is a component of synapses, where it concentrates at the postsynaptic density (PSD) in cultured hippocampal neurons [98]. These data together suggest that the insulin receptor is in the right place at the right time to regulate the initial neuronal development by regulating synaptic function in the CNS.

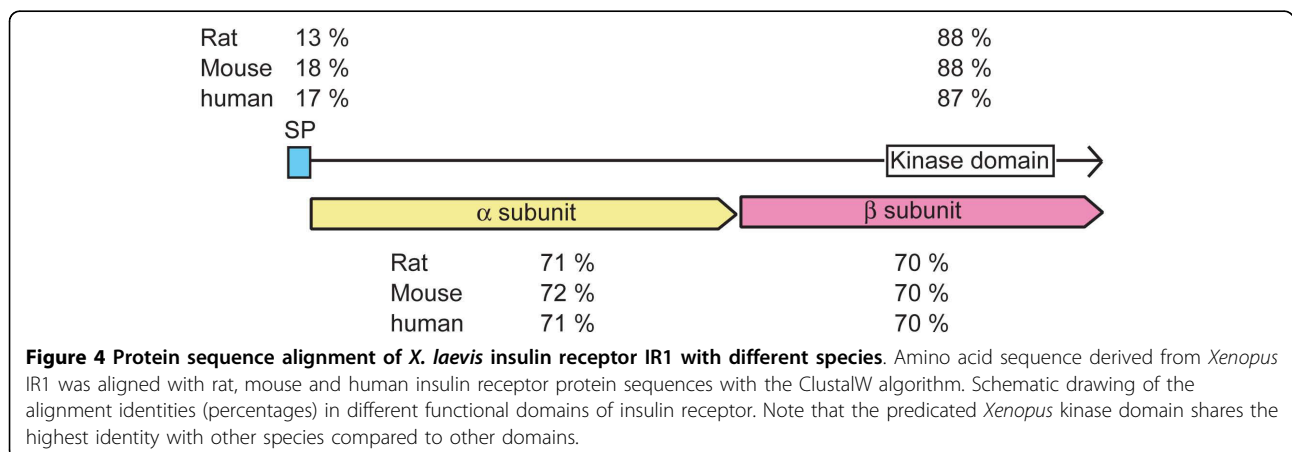
Although the IGF-1 receptor, which can dimerize with the insulin receptor and affect its ligand affinity and specificity, as mentioned previously, shows a similar distribution in the brain as the insulin receptor, it also exhibits a distinct expression pattern compared to the insulin receptor when examined in detail locally [99]. For example, both receptors are highly expressed in hippocampus; however, insulin receptor mRNA is more abundant in the CA1 region whereas IGF-1 receptor mRNA is greater in the CA3 region, implying that insulin/IGF-1 receptor signaling may play distinct roles in subregions of the hippocampus.

Function of insulin receptor in circuit development and plasticity

Brain insulin receptor signaling reportedly plays diverse roles in the CNS, including regulation of synaptic plasticity [100-106], dendritic outgrowth [77,107], and involvement in neuronal survival [108,109], life span [110-114], learning and memory [115-117], and neurological disorders [118-121]. A role for insulin receptor signaling in synaptic function and dendritic morphogenesis, therefore, makes it a potential regulator of circuit development and circuit function.

Synaptic function

Recent work suggests insulin receptor signaling is involved in postsynaptic neurotransmitter receptor trafficking. For excitatory receptors, insulin accelerates clathrin-dependent endocytosis of GluR2 subunit-containing AMPA receptors and contributes to long-term depression [100,102,122-124]. In contrast, insulin reportedly accelerates GluR1 subunit-containing AMPA receptor insertion into the membrane in a GluR1 subunit-dependent manner in cultured hippocampal neurons [104]. Therefore, the physiological significance of insulin receptor signaling in AMPA receptor-mediated transmission is somewhat controversial and needs to be further studied *in vivo*. Moreover, insulin promotes the delivery of NMDA



receptors to the cell surface by exocytosis in *Xenopus* oocytes expressing recombinant NMDA receptor [105]. For inhibitory receptors, insulin rapidly recruits type A γ -aminobutyric acid (GABA_A) receptors to the postsynaptic membrane in cultured hippocampal neurons [106]. These data suggest that insulin receptor signaling is capable of regulating both excitatory and inhibitory synaptic transmission in the CNS. In addition, brief incubation of insulin results in increased protein synthesis of PSD-95, a dendritic scaffolding protein that associates neurotransmitter receptors and cytoskeletal elements at synapses in hippocampal slices and synaptosomes [125], also suggesting that insulin receptor signaling can potentially regulate structural aspects of synaptic function, synaptogenesis and synapse maturation.

Recently, our laboratory provided direct *in vivo* evidence for the function of insulin receptor signaling in both the structure and function of brain circuit development in the visual system of live *Xenopus* tadpoles [84]. The retinotectal circuit of *Xenopus* (see schematic in Figure 5), in which tectal neurons receive direct visual input from the retinal ganglion cells in the eye [126], is a powerful experimental system to study both structural [47,52,63,73] and functional plasticity [17,36,47,73,127-130] *in vivo*. By taking advantage of the *Xenopus* visual circuit as an *in vivo* experimental system amenable to molecular manipulation, electrophysiology and a variety of imaging methods, we showed that the insulin receptor is required for optic tectal neurons to receive normal levels of visual input within the retinotectal circuit [84]. Reduced insulin receptor phosphorylation by ectopic expression of dominant negative insulin receptor (dnIR), which contains a point mutation to abolish insulin receptor binding to ATP, or decrease insulin receptor protein by morpholino-mediated knockdown in tectal neurons, severely decreases their glutamatergic synaptic input and reduces their responses to natural light stimuli (Figure 5). Few studies have made a direct comparison between the effects of protein knockdown and dominant negative interference with signaling. It is interesting to note that decreasing insulin receptor signaling either by expression of a dominant negative receptor or by morpholino-mediated knockdown leads to a comparable magnitude of functional impairment in visual system processing, suggesting that the presence of the protein itself does not play a role in visual system development independent of its kinase-dependent signaling.

Dendritic morphogenesis

Several molecules downstream of the insulin receptor, including both the Ras/MAPK and PI3K/Akt/mammalian target of rapamycin (mTOR) pathways, have been implicated in excitatory synaptic connectivity as well as dendritic structure [131,132]. IRSp53, a novel insulin

receptor substrate enriched in the brain, where it localizes to synapses as a component of the PSD [98], is particularly interesting. Structural analysis predicted that IRSp53 contains several protein-protein interaction domains, including an amino-terminal F-actin bundling domain [133,134], a central Cdc42/Rac interactive binding (CRIB) motif [135], a Src homology region 3 (SH3) domain [76,136,137], a proline rich SH3-binding domain [136], a proline-rich WW-binding motif [136], and a carboxy-terminal postsynaptic density-95/discs large/zona occidens-1 (PDZ) domain [76,138]. Biochemical studies showed that it directly interacts with PSD scaffold proteins, Shank and PSD-95 [76,137-139], small GTPases such as Rac and Cdc42 [77,139-141], and actin regulators such as WAVE2 and Mena [140,141]. These data together suggest a link between insulin receptor signaling and the structural stabilization of excitatory synaptic contacts through the association of synaptic scaffolding proteins and the cytoskeleton. In fact, these ideas were further supported by the findings that overexpression of IRSp53 can increase spine density in cultured hippocampal neurons [76] and induce filopodium formation and neurite outgrowth in N1E-115 neuroblastoma cells [77,142], whereas RNA interference knockdown of IRSp53 protein decreases spine density and alters spine morphogenesis [76]. Another line of evidence supporting the idea that insulin receptor plays a role in dendritic arbor development comes from transgenic mice lacking IGF-1, a potential ligand for insulin receptor and IGF-1 receptor heterodimer receptors in the brain. Pyramidal neurons from the IGF-1 null mice showed significant reduction in dendritic arbor length and complexity as well as spine density [107].

Experience-dependent dendritic plasticity

Activity shapes synaptic connectivity and dendritic morphogenesis in the CNS, particularly in sensory regions. Interestingly, insulin is released from neurons upon depolarization [143,144] and IRSp53 translocates to synapses in response to activity [145], suggesting that insulin receptor signaling may increase in an activity-dependent manner. Consistent with this idea, we have shown recently that insulin receptor signaling plays an important role in visual experience-dependent structural plasticity [84]. More specifically, enhanced visual stimulation normally induces tectal neurons to increase their rate of dendritic growth by increasing branch length extension and branch tip stabilization. In the absence of insulin receptor signaling, however, more branches shorten and more branches are lost during the period of visual stimulation.

Insulin receptor signaling and synaptic structure

As mentioned earlier, reduced insulin receptor protein and signaling in *Xenopus* visual system showed that insulin receptor signaling is required for optic tectal

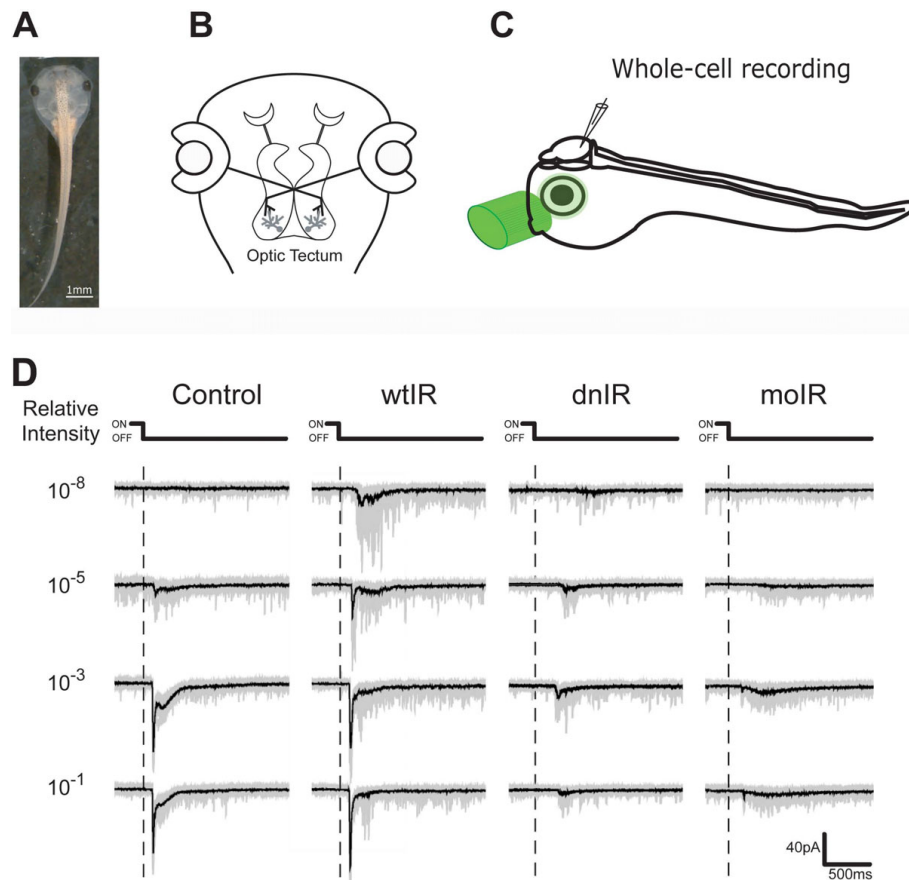


Figure 5 Recording of visual responses in an intact animal. **(A)** *X. laevis* tadpole. **(B)** Diagram of the *Xenopus* visual circuit. Optic tectal neurons receive direct visual input from retinal ganglion cells of the eye. **(C)** Experimental setup. Visual stimulation was delivered with a green LED pigtailed to an optic fiber that illuminates the entire eye for whole field stimulation. The tadpole brain was cut along the midline to expose the cell bodies. Visual responses from tectal neurons contralateral to the stimulated eye were recorded by whole-cell recording. **(D)** Visual responses of tectal neurons. Tectal neurons respond to transient light intensity change. The OFF responses induced by light off is normally bigger in amplitude and longer in duration than ON responses induced by light on. Superimposition of 20 consecutive responses (gray) and the averaged trace (black) are shown. Adapted from [84]. dnIR, dominant negative insulin receptor; moIR, morpholino-mediated knockdown of insulin receptor; wtIR, wild-type insulin receptor.

neurons to receive proper glutamatergic synaptic input and undergo activity-dependent dendritic arbor growth. To probe the role of insulin receptor signaling in developmental plasticity of the glutamatergic synapse, we examined the spontaneous AMPA receptor-mediated miniature excitatory postsynaptic currents (mEPSC) in dnIR-expressing neurons. We found that they have much lower mEPSC frequency but equivalent amplitude compared to controls, indicating that either presynaptic vesicle release probability or synapse number is reduced in dnIR-expressing neurons. Because the paired-pulsed ratio with retinal ganglion cell axon stimulation in dnIR-expressing neurons did not change, it is unlikely that the lower mEPSC frequency in dnIR-expressing neurons is due to low probability of release. To test whether synaptic contacts onto dnIR-expressing tectal neurons were changed in dnIR-expressing neurons, we

used electron microscopy to estimate synapse density on tectal neurons. This methodology gives both definite identification of synaptic contacts onto transfected neurons and ultrastructural information about both pre- and post-synaptic profiles [23]. We estimated synapse density by measuring the number of green fluorescent protein (GFP)-labeled synapses normalized to the total area of GFP-labeled dendritic profiles and found that dnIR-expressing dendrites had less than half of the synapse density of GFP-labeled neuron controls, although no changes in other ultrastructural features or synapse maturation were observed (Figures 6A-C) [84]. These observations, according to both electrophysiological and ultrastructural data, together with decreased dendritic plasticity in dnIR-expressing neurons, suggest that insulin receptor signaling maintains both synaptic contacts and the branches they sit on, which in turn

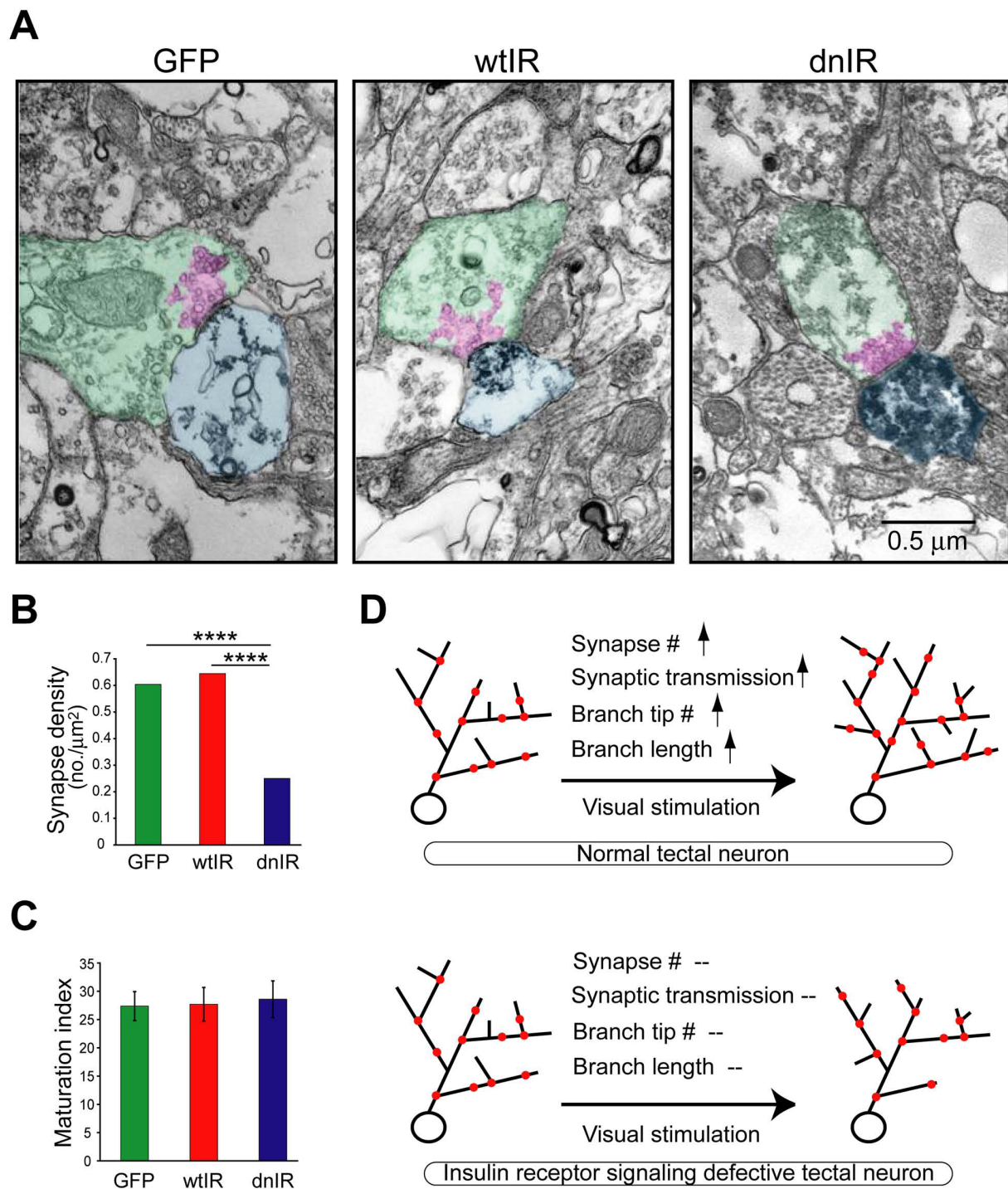


Figure 6 Insulin receptor signaling regulates synapse numbers. (A) Electron micrographs show ultrastructural morphology of synaptic terminals that contact green fluorescent protein (GFP)-, wild-type insulin receptor (wtIR)- and dominant negative insulin receptor (dnIR)-expressing dendrites. The postsynaptic area, presynaptic area and the clustered synaptic vesicle are highlighted in light blue, green, and pink, respectively. (B) dnIR-expressing dendrites receive significantly fewer synaptic contacts compared to GFP- and wtIR-transfected dendrites. (C) Synapses that contact GFP-, wtIR- and dnIR-expressing dendrites show comparable ultrastructural synaptic maturity, determined by the area occupied by clustered synaptic vesicles relative to the area of the presynaptic terminal. (D) Schematic cartoon showing that normal tectal neurons increase total synapse number and, therefore, synaptic transmission, branch stabilization and extension in response to enhanced visual stimulation, whereas tectal neurons expressing dnIR do not increase synapse number and fail to increase synaptic function and dendritic structural plasticity.

promotes dendritic branch elaboration with visual experience.

Our observations are consistent with the synaptotrophic hypothesis, which states that the formation and maintenance of synapses promote the stabilization of dendritic branches and that dendritic arbor growth correlates positively with the number and strength of synapses [18]. In the optic tectum of *Xenopus*, visual experience increases dendritic arbor growth rate, retinotectal synaptogenesis and retinotectal synaptic strength [17,52,63,128,146]. Similarly, in zebrafish, synapses appear to stabilize growing dendrites and promote further dendrite branch growth in tectal neurons [71]. Conversely, blocking synapse maturation by interfering with AMPA receptor trafficking into synapses reduces dendritic arbor elaboration and completely blocks the visual stimulation-induced increase in dendritic arbor growth [52]. Therefore, the visual stimulation-induced increase in synapse number and strength [17] appears to stabilize newly extended dendritic branches. The failure of neurons with decreased insulin receptor signaling to increase their growth rate in response to visual stimulation could be a result of their low synapse density. One potential mechanism by which a lower synapse density could affect experience-dependent structural plasticity is that these neurons do not form and maintain synapses on newly added branches, and they are consequently retracted. The alternative, but not mutually exclusive, mechanism is based on the fact that, in these experiments, we transfected single tectal neurons within an otherwise normal optic tectum. Therefore, while surrounding tectal cells, which have twice the synapse density of the dnIR-expressing neurons, respond to visual stimulation normally and can increase their synapses and promote dendritic growth, the single dnIR-expressing neuron, which responds to visual inputs very weakly, may not be able to compete with normal neighboring tectal neurons for retinal inputs. Consequently, this might lead to branch length retraction and branch loss in the insulin receptor signaling deficient neurons.

Unexpectedly, we found that dnIR-expressing neurons can still elaborate their dendrites over a period of several days even when synapse density is low during early development. A similar observation was reported with manipulation of levels of the neurotrophin brain-derived neurotrophic factor, which significantly changed synapse number but not dendritic arbor morphology [147]. In the case of insulin receptor signaling where experience-dependent structural plasticity is decreased when assayed over a period of 4 hours, these daily imaging data suggest that under conditions of decreased synaptic input, alternative mechanisms participate in dendritic arbor growth control.

Insulin receptor signaling and neurological diseases

Emergent evidence suggests an association of insulin receptor signaling with several neurological disorders. Although the role that the insulin receptor may play in these disorders is still a puzzle, enhanced brain insulin receptor signaling has been used to treat schizophrenia patients early in the mid-20th century [148,149] and insulin sensitizing drugs are now in clinical trials for the treatment of Alzheimer's disease [150-152], highlighting its importance in both neuronal developmental and degenerative diseases.

Neurodegenerative diseases

Reduced mRNA and protein levels have been reported in postmortem material from patients with neurodegenerative disorders, for example Alzheimer's disease [118,153] and Parkinson's disease [119], implying a role for insulin receptor signaling in neurodegenerative diseases. Among these, Alzheimer's disease is the best-studied neurodegenerative disease with respect to insulin receptor signaling.

Alzheimer's disease, the most common brain degeneration characterized clinically by progressive decline of memory and pathologically by loss of synapses, formation of neurofibrillary tangles and neuritic plaques, has been extensively studied with respect to insulin receptor signaling. Insulin receptor signaling inhibits a key event in the formation of neurofibrillary tangles by reducing tau protein phosphorylation [154,155]. Additionally, insulin receptor signaling prevents plaque formation by modulating amyloid β ($A\beta$) release [156] and degradation [157-160].

Although tangle formation and amyloid deposits are useful diagnostic markers, synapse loss is more robustly correlated with cognitive deficits than any other pathological lesion observable in Alzheimer's patients [161-164]. Progressive accumulation and toxicity of $A\beta$ oligomers is the leading hypothesis for etiology of Alzheimer's disease [163]. Interestingly, the $A\beta$ oligomer induces glutamatergic synapse loss [165,166], which in addition to cholinergic synapses seems to be most severely affected in Alzheimer's disease patients [167,168].

Furthermore, increasing evidence shows that $A\beta$ binds to the insulin receptor, decreases the relative amount of insulin receptor in the dendritic compartment, and causes neuronal oxidative stress and loss of spines [153,169-171]. Intracellularly, $A\beta$ is reported to block insulin receptor signaling by reducing Akt activation and eliminating its neuroprotective benefit [172,173]. Our data suggesting that insulin receptor signaling is required to maintain synapses are consistent with the model that $A\beta$ leads to loss of synapses by directly

interacting with the insulin receptor and interfering with insulin receptor signaling. Our data further support the idea that synapse loss resulting from reduced insulin receptor signaling will decrease experience-dependent structural plasticity and ultimately lead to deficits in circuit function, including information processing and integration. By contrast, reduced IGF-1 receptor function also reportedly decreases A β toxicity and ameliorates neuronal/synaptic loss in animal models of Alzheimer's disease [174,175]. The seemingly opposite outcomes from decreased insulin receptor and IGF-1 receptor signaling implies that either they initiate different pathways or they share the same signaling pathway but bi-directionally regulate A β toxicity and synaptic loss in Alzheimer's disease.

Neuronal developmental disorders

Several neuronal developmental disorders are thought to be associated with insulin receptor signaling malfunction. For instance, schizophrenia is a chronic neurodevelopmental disorder that affects approximately 1.1% of the US population, and decreased insulin receptor protein and activity and altered downstream signaling have been reported in post-mortem schizophrenia patients [121]. Although the underlying mechanism is poorly understood, insulin treatment of schizophrenic patients was initiated during the 1930s and reportedly gives effective clinical results, [148,149]. Surprisingly, schizophrenia and Alzheimer's disease share some early pathological hallmarks, such as impaired synaptic connectivity [176-178] and abnormal dendritic structure [179,180], that eventually result in impaired circuit function and aberrant cognitive behavior.

Another example is tuberous sclerosis (TSC), a genetic disorder resulting from mutation in one of the two tumor suppressor genes, *TSC1* or *TSC2*, that often give rise to multiple neurological deficits such as epilepsy, mental retardation and autism. Interestingly, loss of TSC function decreases synaptic transmission and alters spine morphology through the mTOR pathway, which overlaps with insulin receptor signaling [181]. One potential etiology for TSC-related neuronal deficits could be their ability to negatively regulate insulin receptor signaling in the brain as reported in the fly and in mammalian cell lines [182,183].

It is now recognized that molecules that regulate aging can also affect early neuronal development. For example, cyclin-dependent kinase 5, which plays roles in neuronal migration in the developing CNS, is also involved in the pathology of Alzheimer's disease [184]. Insulin receptor signaling, therefore, might participate at both ends of the story: early development as well as later neurodegenerative diseases.

Perspectives

Accumulating data support the idea that insulin receptor signaling plays a prominent role in both structural and functional aspects of circuit development. The detailed cellular and molecular mechanisms by which insulin receptor signaling control synaptic function and dendritic structure are still to be determined. Besides the role of insulin receptor signaling in circuit formation, insulin receptor signaling has been linked to several neurological disorders. Whether failures in synaptic function and dendritic structure caused by decreased insulin receptor signaling contribute to brain diseases later in life is an important issue to address.

Synapse formation or maintenance?

Precise synaptic connectivity is required for normal brain function, yet synaptic connectivity is dynamic as a result of constant synapse formation and elimination. Therefore, the reduced synapse number seen in dnIR-expressing neurons could be due to a function of insulin receptor signaling in synapse formation or synapse maintenance. If insulin receptor signaling promotes synapse formation, disrupting insulin receptor signaling should cause a shift in average maturity of the synapse population because dnIR expression would block new synapse formation but not maturation of existing synapses; however, postsynaptic AMPA/NMDA ratios or presynaptic maturation indexes were not different in dnIR-expressing neurons compared to controls. Furthermore, our ultrastructural observations indicate that the synapses onto dnIR-expressing neurons have similar maturation indices as controls. Finally, we find that the fraction of silent synapses is not altered in dnIR-expressing neurons compared to controls. These three pieces of evidence suggest that insulin receptor signaling is not required for synapse formation and is, therefore, more likely to regulate synapse connectivity through synapse maintenance. Collectively, these results indicate that synapse maturation and the balance of synapse formation and elimination could be separately regulated *in vivo*, and that insulin receptor signaling has an impact specifically on the synapse numbers by regulating synapse elimination. Moderate expression of PSD-95 has been used as an *in vivo* synaptic marker without significantly affecting synaptic density in *Xenopus* tadpoles and other vertebrates [147,185]. Therefore, it would be interesting to perform *in vivo* time-lapse imaging to monitor synapse dynamics by tracking fluorescently tagged PSD-95 puncta in optic tectal cell dendrites. Detailed analysis of synapse behaviors - for example, to determine numbers of added, stable and lost synapses in dnIR- or GFP-transfected neurons - would provide a direct test of the hypothesis and could elucidate the

cellular mechanism of insulin receptor signaling in regulating synapse connectivity.

Endogenous ligand and receptor composition

Insulin is thought to be the primary ligand for the insulin receptor; however, IGF-2 also reportedly binds the homodimer of the insulin receptor splice variant in the brain [95]. Moreover, the discovery that the insulin receptor and IGF-1 receptor heterodimerize expands the potential ligands for insulin receptor heterodimers in the brain to include insulin, IGF-2, IGF-1 and possibly others [86]. Several potential ligands - for example, mammalian insulin and nematode insulin and IGFs - have been reported to affect synaptic transmission and plasticity, dendrite structure, whole animal lifespan and behaviors in various model systems [101,105-107,186-189]. The identity of the primary ligand(s) that activate insulin receptor signaling and regulate synapse number, where the ligands are found in the brain and how are they regulated are all important questions requiring further exploration.

At the receptor level, it is important to investigate the composition of the receptor dimer since it determines the specificity and affinity of the ligand(s) and might initiate distinct downstream signaling pathways. Our strategy of using dnIR expression can potentially disrupt three types of receptor signaling according to the receptor composition: the insulin receptor homodimer; the insulin receptor-IGF-1 receptor heterodimer; and the IGF-1 receptor homodimer. It is interesting to note that when antisense morpholino oligonucleotides were used to specifically knockdown insulin receptor but not IGF-1 receptor, morpholino-transfected neurons show a similar deficit in visual responses recorded *in vivo* compared to dnIR-expressing neurons. This result indicates that the insulin receptor, instead of the IGF-1 receptor, plays major roles in visual circuit function. Nevertheless, whether the insulin receptor executes its function through the insulin receptor homodimer or the insulin receptor/IGF-1 receptor heterodimer is still an open question. Traditional co-immunoprecipitation of the insulin receptor dimers from brain lysate might help in deciphering the receptor composition if one can develop specific antibodies to differentiate these two structurally similar receptors. Alternatively, molecular tools - for example, morpholino or RNA interference - to specifically knockdown the insulin receptor, the IGF-1 receptor alone, or both together may provide further insight.

Molecular mechanisms

The decrease in insulin receptor signaling by dnIR expression affects visual responses in tectal neurons to the same extent as morpholino-mediated knockdown of

insulin receptor protein, indicating that kinase activity of the insulin receptor plays a major role in insulin receptor function. What are the downstream cascades activated by insulin receptor kinase activity in the CNS? Studies in peripheral tissues have demonstrated that MAPK or Akt are major pathways downstream of the insulin receptor [88]. Whether MAPK or Akt pathways underlie insulin receptor-mediated circuit development needs to be further explored. In addition to these general pathways, some molecules appear to be more specific to insulin receptor signaling, for example, IRSs [190]. As mentioned before, IRSp53 is a great candidate to execute insulin receptor function at excitatory synapses by regulating the actin cytoskeleton through a pathway that requires its coupling with activated Rho GTPase [77,140,141]. Whether this effect on actin cytoskeleton originates from insulin receptor signaling would be interesting to know. Recently, the phosphorylation sites of IRSp53 that specifically respond to insulin receptor signaling have been discovered [191]. Mutations of these sites would allow us to understand the interplay between the insulin receptor, IRSp53 and RhoGTPases in the structural aspects of circuit development.

Neurological disorders

Accumulating data suggest a potential link between insulin receptor signaling and several neurological disorders. As mentioned above, enhanced insulin receptor signaling has been one strategy for clinical treatments for patients with Alzheimer's disease [150-152] and schizophrenia [148,149], although the underlying mechanism is not clear. One common pathological hallmark for Alzheimer's disease and schizophrenia is the problem in circuit function as a result of reduced synaptic connectivity [176-178,192]. The discovery of a crucial role for the insulin receptor in synapse maintenance and circuit function suggests a cellular mechanism to illustrate how impaired insulin receptor signaling may contribute to neurological disorders. Nevertheless, improved treatments and additional research are needed to understand the detailed molecular mechanism by which the insulin receptor affects synapse loss or function of brain circuits. A transgenic model system in which insulin receptor levels or signaling could be controlled with spatial and temporal resolution would be beneficial in exploring the detailed mechanisms at the molecular level and the pathogenesis at the behavioral level. Since whole system knockouts of insulin receptor in mice are lethal [193], conditional knockouts will be required. In fact, neuron specific insulin receptor knockout mice that are viable have been developed and they show decreased phosphorylation of Akt and glycogen synthase kinase 3 beta. Interestingly, glycogen synthase kinase 3 beta is again highly associated with Alzheimer's disease [155,194] and

schizophrenia [195]. Further research on this type of transgenic system will provide insight into the physiological function of the insulin receptor in the development of the normal brain as well as the etiology of neurological diseases.

Abbreviations

A β : amyloid β ; AMPA: α -amino-3-hydroxy-5-methyl-4-isoxazole propionic acid; CNS: central nervous system; dnIR: dominant negative insulin receptor; GABA: γ -aminobutyric acid; GFP: green fluorescent protein; GluR: glutamate receptor; IGF: insulin-like growth factor; IR: insulin receptor; IRS: insulin receptor substrate; MAPK: mitogen-activated protein kinase; mEPSC: miniature excitatory postsynaptic currents; mTOR: mammalian target of rapamycin; NMDA: N-methyl-D-aspartate; PI3K: phosphoinositide-3 kinase; PSD: postsynaptic density; PSD-95: postsynaptic density protein-95; TSC: tuberous sclerosis.

Acknowledgements

The authors thank current and past members of the Cline Lab for insightful discussions, particularly Emiliano Rial Verde for encouraging the work. Supported by grants from the NIH (EY11261 and DP1OD000458 to HTC) and an Elizabeth Sloan Livingston Foundation Fellowship (S-LC).

Author details

¹Watson School of Biological Sciences and Cold Spring Harbor Laboratory, Cold Spring Harbor, NY 11724, USA. ²Departments of Cell Biology and Chemical Physiology, The Scripps Research Institute, 10550 North Torrey Pines Road, La Jolla, CA 92037, USA.

Authors' contributions

S-LC and HTC discussed the content and wrote the manuscript.

Competing interests

The authors declare that they have no competing interests.

Received: 14 December 2009 Accepted: 15 March 2010

Published: 15 March 2010

References

1. Trachtenberg JT, Chen BE, Knott GW, Feng G, Sanes JR, Welker E, Svoboda K: Long-term *in vivo* imaging of experience-dependent synaptic plasticity in adult cortex. *Nature* 2002, **420**:788-794.
2. Holtmaat A, Wilbrecht L, Knott GW, Welker E, Svoboda K: Experience-dependent and cell-type-specific spine growth in the neocortex. *Nature* 2006, **441**:979-983.
3. Chen C, Regehr WG: Developmental remodeling of the retinogeniculate synapse. *Neuron* 2000, **28**:955-966.
4. Li Z, Sheng M: Some assembly required: the development of neuronal synapses. *Nat Rev Mol Cell Biol* 2003, **4**:833-841.
5. Ahmari SE, Buchanan J, Smith SJ: Assembly of presynaptic active zones from cytoplasmic transport packets. *Nat Neurosci* 2000, **3**:445-451.
6. Bresler T, Shapira M, Boeckers T, Dresbach T, Futter M, Garner CC, Rosenblum K, Gundelfinger ED, Ziv NE: Postsynaptic density assembly is fundamentally different from presynaptic active zone assembly. *J Neurosci* 2004, **24**:1507-1520.
7. Jin Y, Garner CC: Molecular mechanisms of presynaptic differentiation. *Annu Rev Cell Dev Biol* 2008, **24**:237-262.
8. Ziv NE, Garner CC: Cellular and molecular mechanisms of presynaptic assembly. *Nat Rev Neurosci* 2004, **5**:385-399.
9. Gerrow K, Romorini S, Nabi SM, Colicos MA, Sala C, El-Husseini A: A preformed complex of postsynaptic proteins is involved in excitatory synapse development. *Neuron* 2006, **49**:547-562.
10. McAllister AK: Dynamic aspects of CNS synapse formation. *Annu Rev Neurosci* 2007, **30**:425-450.
11. Dufour A, Seibt J, Passante L, Depaepae V, Ciossek T, Frisen J, Kullander K, Flanagan JG, Polleux F, Vanderhaeghen P: Area specificity and topography of thalamocortical projections are controlled by ephrin/Eph genes. *Neuron* 2003, **39**:453-465.
12. O'Leary DD, Wilkinson DG: Eph receptors and ephrins in neural development. *Curr Opin Neurobiol* 1999, **9**:65-73.
13. Benson DL, Colman DR, Huntley GW: Molecules, maps and synapse specificity. *Nat Rev Neurosci* 2001, **2**:899-909.
14. Togashi H, Abe K, Mizoguchi A, Takaoka K, Chisaka O, Takeichi M: Cadherin regulates dendritic spine morphogenesis. *Neuron* 2002, **35**:77-89.
15. Scheiffele P: Cell-cell signaling during synapse formation in the CNS. *Annu Rev Neurosci* 2003, **26**:485-508.
16. Levinson JN, El-Husseini A: Building excitatory and inhibitory synapses: balancing neuroligin partnerships. *Neuron* 2005, **48**:171-174.
17. Aizenman CD, Cline HT: Enhanced visual activity *in vivo* forms nascent synapses in the developing retinotectal projection. *J Neurophysiol* 2007, **97**:2949-2957.
18. Cline H, Haas K: The regulation of dendritic arbor development and plasticity by glutamatergic synaptic input: a review of the synaptotrophic hypothesis. *J Physiol* 2008, **586**:1509-1517.
19. Cline HT: Dendritic arbor development and synaptogenesis. *Curr Opin Neurobiol* 2001, **11**:118-126.
20. Wong RO, Ghosh A: Activity-dependent regulation of dendritic growth and patterning. *Nat Rev Neurosci* 2002, **3**:803-812.
21. Blue ME, Parnavelas JG: The formation and maturation of synapses in the visual cortex of the rat. II. Quantitative analysis. *J Neurocytol* 1983, **12**:697-712.
22. Mohrmann R, Lessmann V, Gottmann K: Developmental maturation of synaptic vesicle cycling as a distinctive feature of central glutamatergic synapses. *Neuroscience* 2003, **117**:7-18.
23. Li J, Cline HT: The accumulation of dense core vesicles in developing optic tectal synapses in *Xenopus laevis* increases following visual deprivation. *J Comp Neurol* 2010.
24. Hestrin S: Developmental regulation of NMDA receptor-mediated synaptic currents at a central synapse. *Nature* 1992, **357**:686-689.
25. Shi J, Aamodt S, Constantine-Paton M: Temporal correlations between functional and molecular changes in NMDA receptors and GABA neurotransmission in the superior colliculus. *J Neurosci* 1997, **17**:6264-6276.
26. Isaac JT, Nicoll RA, Malenka RC: Evidence for silent synapses: implications for the expression of LTP. *Neuron* 1995, **15**:427-434.
27. Liao D, Hessler NA, Malinow R: Activation of postsynaptically silent synapses during pairing-induced LTP in CA1 region of hippocampal slice. *Nature* 1995, **375**:400-404.
28. Wu G, Malinow R, Cline HT: Maturation of a central glutamatergic synapse. *Science* 1996, **274**:972-976.
29. Washbourne P, Bennett JE, McAllister AK: Rapid recruitment of NMDA receptor transport packets to nascent synapses. *Nat Neurosci* 2002, **5**:751-759.
30. Luo L, O'Leary DD: Axon retraction and degeneration in development and disease. *Annu Rev Neurosci* 2005, **28**:127-156.
31. Walsh MK, Lichtman JW: *In vivo* time-lapse imaging of synaptic takeover associated with naturally occurring synapse elimination. *Neuron* 2003, **37**:67-73.
32. Nguyen QT, Lichtman JW: Mechanism of synapse disassembly at the developing neuromuscular junction. *Curr Opin Neurobiol* 1996, **6**:104-112.
33. Rakic P, Bourgeois JP, Eckenhoff MF, Zecevic N, Goldman-Rakic PS: Concurrent overproduction of synapses in diverse regions of the primate cerebral cortex. *Science* 1986, **232**:232-235.
34. Hashimoto K, Kano M: Functional differentiation of multiple climbing fiber inputs during synapse elimination in the developing cerebellum. *Neuron* 2003, **38**:785-796.
35. Nakamura H, O'Leary DD: Inaccuracies in initial growth and arborization of chick retinotectal axons followed by course corrections and axon remodeling to develop topographic order. *J Neurosci* 1989, **9**:3776-3795.
36. Tao HW, Poo MM: Activity-dependent matching of excitatory and inhibitory inputs during refinement of visual receptive fields. *Neuron* 2005, **45**:829-836.
37. Chen C, Regehr WG: Presynaptic modulation of the retinogeniculate synapse. *J Neurosci* 2003, **23**:3130-3135.
38. Colman H, Nabekura J, Lichtman JW: Alterations in synaptic strength preceding axon withdrawal. *Science* 1997, **275**:356-361.
39. Bosman LW, Takechi H, Hartmann J, Eilers J, Konnerth A: Homosynaptic long-term synaptic potentiation of the "winner" climbing fiber synapse in developing Purkinje cells. *J Neurosci* 2008, **28**:798-807.

40. Kano M, Hashimoto K, Chen C, Abeliovich A, Aiba A, Kurihara H, Watanabe M, Inoue Y, Tonegawa S: **Impaired synapse elimination during cerebellar development in PKC gamma mutant mice.** *Cell* 1995, **83**:1223-1231.
41. Kano M, Hashimoto K, Kurihara H, Watanabe M, Inoue Y, Aiba A, Tonegawa S: **Persistent multiple climbing fiber innervation of cerebellar Purkinje cells in mice lacking mGluR1.** *Neuron* 1997, **18**:71-79.
42. Kashiwabuchi N, Ikeda K, Araki K, Hirano T, Shibuki K, Takayama C, Inoue Y, Kutsuwada T, Yagi T, Kang Y, et al: **Impairment of motor coordination, Purkinje cell synapse formation, and cerebellar long-term depression in GluR delta 2 mutant mice.** *Cell* 1995, **81**:245-252.
43. Huh GS, Boulanger LM, Du H, Riquelme PA, Brotz TM, Shatz CJ: **Functional requirement for class I MHC in CNS development and plasticity.** *Science* 2000, **290**:2155-2159.
44. Ishii DN: **Relationship of insulin-like growth factor II gene expression in muscle to synaptogenesis.** *Proc Natl Acad Sci USA* 1989, **86**:2898-2902.
45. Stevens B, Allen NJ, Vazquez LE, Howell GR, Christopherson KS, Nouri N, Micheva KD, Mehalow AK, Huberman AD, Stafford B, Sher A, Litke AM, Lambris JD, Smith SJ, John SW, Barres BA: **The classical complement cascade mediates CNS synapse elimination.** *Cell* 2007, **131**:1164-1178.
46. Hua JY, Smith SJ: **Neural activity and the dynamics of central nervous system development.** *Nat Neurosci* 2004, **7**:327-332.
47. Bestman JE, Cline HT: **The RNA binding protein CPEB regulates dendrite morphogenesis and neuronal circuit assembly in vivo.** *Proc Natl Acad Sci USA* 2008, **105**:20494-20499.
48. Wu GY, Zou DJ, Rajan I, Cline H: **Dendritic dynamics in vivo change during neuronal maturation.** *J Neurosci* 1999, **19**:4472-4483.
49. Dailey ME, Smith SJ: **The dynamics of dendritic structure in developing hippocampal slices.** *J Neurosci* 1996, **16**:2983-2994.
50. Rajan I, Cline HT: **Glutamate receptor activity is required for normal development of tectal cell dendrites in vivo.** *J Neurosci* 1998, **18**:7836-7846.
51. Ewald RC, Van Keuren-Jensen KR, Aizenman CD, Cline HT: **Roles of NR2A and NR2B in the development of dendritic arbor morphology in vivo.** *J Neurosci* 2008, **28**:850-861.
52. Haas K, Li J, Cline HT: **AMPA receptors regulate experience-dependent dendritic arbor growth in vivo.** *Proc Natl Acad Sci USA* 2006, **103**:12127-12131.
53. Akaaboune M, Culican SM, Turney SG, Lichtman JW: **Rapid and reversible effects of activity on acetylcholine receptor density at the neuromuscular junction in vivo.** *Science* 1999, **286**:503-507.
54. Lee WC, Chen JL, Huang H, Leslie JH, Amitai Y, So PT, Nedivi E: **A dynamic zone defines interneuron remodeling in the adult neocortex.** *Proc Natl Acad Sci USA* 2008, **105**:19968-19973.
55. Lee WC, Huang H, Feng G, Sanes JR, Brown EN, So PT, Nedivi E: **Dynamic remodeling of dendritic arbors in GABAergic interneurons of adult visual cortex.** *PLoS Biol* 2006, **4**:e29.
56. Van Aelst L, Cline HT: **Rho GTPases and activity-dependent dendrite development.** *Curr Opin Neurobiol* 2004, **14**:297-304.
57. Li Z, Van Aelst L, Cline HT: **Rho GTPases regulate distinct aspects of dendritic arbor growth in Xenopus central neurons in vivo.** *Nature Neurosci* 2000, **3**:217-225.
58. Tolias KF, Bikoff JB, Burette A, Paradis S, Harrar D, Tavazoie S, Weinberg RJ, Greenberg ME: **The Rac1-GEF Tiam1 couples the NMDA receptor to the activity-dependent development of dendritic arbors and spines.** *Neuron* 2005, **45**:525-538.
59. Matsuo N, Hoshino M, Yoshizawa M, Nabeshima Y: **Characterization of STEF, a guanine nucleotide exchange factor for Rac1, required for neurite growth.** *J Biol Chem* 2002, **277**:2860-2868.
60. Brouns MR, Matheson SF, Settleman J: **p190 RhoGAP is the principal Src substrate in brain and regulates axon outgrowth, guidance and fasciculation.** *Nat Cell Biol* 2001, **3**:361-367.
61. Brouns MR, Matheson SF, Settleman J: **p190 RhoGAP is the principal Src substrate in brain and regulates axon outgrowth, guidance and fasciculation.** *Nat Cell Biol* 2001, **3**:361-367.
62. Li Z, Aizenman CD, Cline HT: **Regulation of Rho GTPases by crosstalk and neuronal activity in vivo.** *Neuron* 2002, **33**:741-750.
63. Sin WC, Haas K, Ruthazer ES, Cline HT: **Dendrite growth increased by visual activity requires NMDA receptor and Rho GTPases.** *Nature* 2002, **419**:475-480.
64. Balkowiec A, Katz DM: **Activity-dependent release of endogenous brain-derived neurotrophic factor from primary sensory neurons detected by ELISA in situ.** *J Neurosci* 2000, **20**:7417-7423.
65. Marshak S, Nikolakopoulou AM, Dirks R, Martens GJ, Cohen-Cory S: **Cell-autonomous TrkB signaling in presynaptic retinal ganglion cells mediates axon arbor growth and synapse maturation during the establishment of retinotectal synaptic connectivity.** *J Neurosci* 2007, **27**:2444-2456.
66. Nedivi E, GY W, Cline HT: **Promotion of dendritic growth by CPG15, an activity-induced signaling molecule.** *Science* 1998, **281**:1863-1866.
67. Wu G-Y, Cline HT: **Stabilization of dendritic arbor structure in vivo by CaMKII.** *Science* 1998, **279**:222-226.
68. Vaughn JE: **Fine structure of synaptogenesis in the vertebrate central nervous system.** *Synapse* 1989, **3**:255-285.
69. Shima Y, Kengaku M, Hirano T, Takeichi M, Uemura T: **Regulation of dendritic maintenance and growth by a mammalian 7-pass transmembrane cadherin.** *Dev Cell* 2004, **7**:205-216.
70. Ye B, Jan YN: **The cadherin superfamily and dendrite development.** *Trends Cell Biol* 2005, **15**:64-67.
71. Niell CM, Meyer MP, Smith SJ: **In vivo imaging of synapse formation on a growing dendritic arbor.** *Nat Neurosci* 2004, **7**:254-260.
72. Rajan I, Witte S, Cline HT: **NMDA receptor activity stabilizes presynaptic retinotectal axons and postsynaptic optic tectal cell dendrites in vivo.** *J Neurobiol* 1999, **38**:357-368.
73. Shen W, Da Silva JS, He H, Cline HT: **Type A GABA-receptor-dependent synaptic transmission sculpts dendritic arbor structure in Xenopus tadpoles in vivo.** *J Neurosci* 2009, **29**:5032-5043.
74. Unger J, McNeill TH, Moxley RT, White M, Moss A, Livingston JN: **Distribution of insulin receptor-like immunoreactivity in the rat forebrain.** *Neuroscience* 1989, **31**:143-157.
75. Havrankova J, Roth J, Brownstein M: **Insulin receptors are widely distributed in the central nervous system of the rat.** *Nature* 1978, **272**:827-829.
76. Choi J, Ko J, Racz B, Burette A, Lee JR, Kim S, Na M, Lee HW, Kim K, Weinberg RJ, Kim E: **Regulation of dendritic spine morphogenesis by insulin receptor substrate 53, a downstream effector of Rac1 and Cdc42 small GTPases.** *J Neurosci* 2005, **25**:869-879.
77. Govind S, Kozma R, Monfries C, Lim L, Ahmed S: **Cdc42Hs facilitates cytoskeletal reorganization and neurite outgrowth by localizing the 58-kD insulin receptor substrate to filamentous actin.** *J Cell Biol* 2001, **152**:579-594.
78. Cheatham B, Kahn CR: **Cysteine 647 in the insulin receptor is required for normal covalent interaction between alpha- and beta-subunits and signal transduction.** *J Biol Chem* 1992, **267**:7108-7115.
79. Seino S, Bell GI: **Alternative splicing of human insulin receptor messenger RNA.** *Biochem Biophys Res Commun* 1989, **159**:312-316.
80. De Meyts P, Whittaker J: **Structural biology of insulin and IGF1 receptors: implications for drug design.** *Nat Rev Drug Discov* 2002, **1**:769-783.
81. Hubbard SR, Wei L, Ellis L, Hendrickson WA: **Crystal structure of the tyrosine kinase domain of the human insulin receptor.** *Nature* 1994, **372**:746-754.
82. Ebina Y, Araki E, Taira M, Shimada F, Mori M, Craik CS, Siddle K, Pierce SB, Roth RA, Rutter WJ: **Replacement of lysine residue 1030 in the putative ATP-binding region of the insulin receptor abolishes insulin- and antibody-stimulated glucose uptake and receptor kinase activity.** *Proc Natl Acad Sci USA* 1987, **84**:704-708.
83. Kanezaki Y, Obata T, Matsushima R, Minami A, Yuasa T, Kishi K, Bando Y, Uehara H, Izumi K, Mitani T, Matsumoto M, Takeshita Y, Nakaya Y, Matsumoto T, Ebina Y: **K(ATP) channel knockout mice crossed with transgenic mice expressing a dominant-negative form of human insulin receptor have glucose intolerance but not diabetes.** *Endocr J* 2004, **51**:133-144.
84. Chiu SL, Chen CM, Cline HT: **Insulin receptor signaling regulates synapse number, dendritic plasticity, and circuit function in vivo.** *Neuron* 2008, **58**:708-719.
85. Jacob KK, Whittaker J, Stanley FM: **Insulin receptor tyrosine kinase activity and phosphorylation of tyrosines 1162 and 1163 are required for insulin-increased prolactin gene expression.** *Mol Cell Endocrinol* 2002, **186**:7-16.
86. White MF: **Insulin signaling in health and disease.** *Science* 2003, **302**:1710-1711.
87. Withers DJ: **Insulin receptor substrate proteins and neuroendocrine function.** *Biochem Soc Trans* 2001, **29**:525-529.

88. Saltiel AR, Kahn CR: **Insulin signalling and the regulation of glucose and lipid metabolism.** *Nature* 2001, **414**:799-806.
89. Schulingkamp RJ, Pagano TC, Hung D, Raffa RB: **Insulin receptors and insulin action in the brain: review and clinical implications.** *Neurosci Biobehav Rev* 2000, **24**:855-872.
90. Wozniak M, Rydzewski B, Baker SP, Raizada MK: **The cellular and physiological actions of insulin in the central nervous system.** *Neurochem Int* 1993, **22**:1-10.
91. Benyoucef S, Surinya KH, Hadaschik D, Siddle K: **Characterization of insulin/IGF hybrid receptors: contributions of the insulin receptor L2 and Fn1 domains and the alternatively spliced exon 11 sequence to ligand binding and receptor activation.** *Biochem J* 2007, **403**:603-613.
92. Slaaby R, Schaffer L, Lautrup-Larsen I, Andersen AS, Shaw AC, Mathiasen IS, Brandt J: **Hybrid receptors formed by insulin receptor (IR) and insulin-like growth factor I receptor (IGF-IR) have low insulin and high IGF-1 affinity irrespective of the IR splice variant.** *J Biol Chem* 2006, **281**:25869-25874.
93. Pandini G, Frasca F, Mineo R, Sciacca L, Vigneri R, Belfiore A: **Insulin/insulin-like growth factor I hybrid receptors have different biological characteristics depending on the insulin receptor isoform involved.** *J Biol Chem* 2002, **277**:39684-39695.
94. Heidenreich KA, Zahniser NR, Berhanu P, Brandenburg D, Olefsky JM: **Structural differences between insulin receptors in the brain and peripheral target tissues.** *J Biol Chem* 1983, **258**:8527-8530.
95. Frasca F, Pandini G, Scalia P, Sciacca L, Mineo R, Costantino A, Goldfine ID, Belfiore A, Vigneri R: **Insulin receptor isoform A, a newly recognized, high-affinity insulin-like growth factor II receptor in fetal and cancer cells.** *Mol Cell Biol* 1999, **19**:3278-3288.
96. Kenner KA, Kusari J, Heidenreich KA: **cDNA sequence analysis of the human brain insulin receptor.** *Biochem Biophys Res Commun* 1995, **217**:304-312.
97. Hughes MK, Hughes AL: **Evolution of duplicate genes in a tetraploid animal, *Xenopus laevis*.** *Mol Biol Evol* 1993, **10**:1360-1369.
98. Abbott MA, Wells DG, Fallon JR: **The insulin receptor tyrosine kinase substrate p58/53 and the insulin receptor are components of CNS synapses.** *J Neurosci* 1999, **19**:7300-7308.
99. Bondy CA, Bach MA, Lee W-H: **Mapping of brain insulin and insulin-like growth factor receptor gene expression by *in situ* hybridization.** *Neuroprotocols* 1992, **1**:240-249.
100. Beattie EC, Carroll RC, Yu X, Morishita W, Yasuda H, von Zastrow M, Malenka RC: **Regulation of AMPA receptor endocytosis by a signaling mechanism shared with LTD.** *Nat Neurosci* 2000, **3**:1291-1300.
101. Huang CC, You JL, Lee CC, Hsu KS: **Insulin induces a novel form of postsynaptic mossy fiber long-term depression in the hippocampus.** *Mol Cell Neurosci* 2003, **24**:831-841.
102. Lin JW, Ju W, Foster K, Lee SH, Ahmadian G, Wyszynski M, Wang YT, Sheng M: **Distinct molecular mechanisms and divergent endocytotic pathways of AMPA receptor internalization.** *Nat Neurosci* 2000, **3**:1282-1290.
103. Ma XH, Zhong P, Gu Z, Feng J, Yan Z: **Muscarinic potentiation of GABA(A) receptor currents is gated by insulin signaling in the prefrontal cortex.** *J Neurosci* 2003, **23**:1159-1168.
104. Passafaro M, Piech V, Sheng M: **Subunit-specific temporal and spatial patterns of AMPA receptor exocytosis in hippocampal neurons.** *Nat Neurosci* 2001, **4**:917-926.
105. Skeberdis VA, Lan J, Zheng X, Zukin RS, Bennett MV: **Insulin promotes rapid delivery of N-methyl-D-aspartate receptors to the cell surface by exocytosis.** *Proc Natl Acad Sci USA* 2001, **98**:3561-3566.
106. Wan Q, Xiong ZG, Man HY, Ackerley CA, Braunton J, Lu WY, Becker LE, MacDonald JF, Wang YT: **Recruitment of functional GABA(A) receptors to postsynaptic domains by insulin.** *Nature* 1997, **388**:686-690.
107. Cheng CM, Mervis RF, Niu SL, Salem N Jr, Witters LA, Tseng V, Reinhardt R, Bondy CA: **Insulin-like growth factor 1 is essential for normal dendritic growth.** *J Neurosci Res* 2003, **73**:1-9.
108. Mielke JG, Taghibiglou C, Wang YT: **Endogenous insulin signaling protects cultured neurons from oxygen-glucose deprivation-induced cell death.** *Neuroscience* 2006, **143**:165-173.
109. Valenciano AI, Corrochano S, de Pablo F, de la Villa P, de la Rosa EJ: **Proinsulin/insulin is synthesized locally and prevents caspase- and cathepsin-mediated cell death in the embryonic mouse retina.** *J Neurochem* 2006, **99**:524-536.
110. Kenyon C, Chang J, Gensch E, Rudner A, Tabtiang R: **A *C. elegans* mutant that lives twice as long as wild type.** *Nature* 1993, **366**:461-464.
111. Kappeler L, De Magalhaes Filho C, Dupont J, Leneuve P, Cervera P, Perin L, Loudes C, Blaise A, Klein R, Epelbaum J, Le Bouc Y, Holzenberger M: **Brain IGF-1 receptors control mammalian growth and lifespan through a neuroendocrine mechanism.** *PLoS Biol* 2008, **6**:e254.
112. Kimura KD, Tissenbaum HA, Liu Y, Ruvkun G: **daf-2, an insulin receptor-like gene that regulates longevity and diapause in *Caenorhabditis elegans*.** *Science* 1997, **277**:942-946.
113. Tatar M, Kopelman A, Epstein D, Tu MP, Yin CM, Garofalo RS: **A mutant *Drosophila* insulin receptor homolog that extends life-span and impairs neuroendocrine function.** *Science* 2001, **292**:107-110.
114. Wolkow CA, Kimura KD, Lee MS, Ruvkun G: **Regulation of *C. elegans* life-span by insulinlike signaling in the nervous system.** *Science* 2000, **290**:147-150.
115. Dou JT, Chen M, Dufour F, Alkon DL, Zhao WQ: **Insulin receptor signaling in long-term memory consolidation following spatial learning.** *Learn Mem* 2005, **12**:646-655.
116. Wickelgren I: **Tracking insulin to the mind.** *Science* 1998, **280**:517-519.
117. Zhao W, Chen H, Xu H, Moore E, Meiri N, Quon MJ, Alkon DL: **Brain insulin receptors and spatial memory. Correlated changes in gene expression, tyrosine phosphorylation, and signaling molecules in the hippocampus of water maze trained rats.** *J Biol Chem* 1999, **274**:34893-34902.
118. Steen E, Terry BM, Rivera EJ, Cannon JL, Neely TR, Tavares R, Xu XJ, Wands JR, de la Monte SM: **Impaired insulin and insulin-like growth factor expression and signaling mechanisms in Alzheimer's disease—is this type 3 diabetes?** *J Alzheimers Dis* 2005, **7**:63-80.
119. Moroo I, Yamada T, Makino H, Tooyama I, McGeer PL, McGeer EG, Hirayama K: **Loss of insulin receptor immunoreactivity from the substantia nigra pars compacta neurons in Parkinson's disease.** *Acta Neuropathol* 1994, **87**:343-348.
120. Takahashi M, Yamada T, Tooyama I, Moroo I, Kimura H, Yamamoto T, Okada H: **Insulin receptor mRNA in the substantia nigra in Parkinson's disease.** *Neurosci Lett* 1996, **204**:201-204.
121. Zhao Z, Ksiazek-Reding H, Riggio S, Haroutunian V, Pasinetti GM: **Insulin receptor deficits in schizophrenia and in cellular and animal models of insulin receptor dysfunction.** *Schizophr Res* 2006, **84**:1-14.
122. Man HY, Lin JW, Ju WH, Ahmadian G, Liu L, Becker LE, Sheng M, Wang YT: **Regulation of AMPA receptor-mediated synaptic transmission by clathrin-dependent receptor internalization.** *Neuron* 2000, **25**:649-662.
123. Zhou Q, Xiao M, Nicoll RA: **Contribution of cytoskeleton to the internalization of AMPA receptors.** *Proc Natl Acad Sci USA* 2001, **98**:1261-1266.
124. Wang Z, Meyer RL: **Fine retinotopic organization of optic terminal arbors in the tectum of normal goldfish.** *Vis Neurosci* 2000, **17**:723-735.
125. Lee CC, Huang CC, Wu MY, Hsu KS: **Insulin stimulates postsynaptic density-95 protein translation via the phosphoinositide 3-kinase-Akt-mammalian target of rapamycin signaling pathway.** *J Biol Chem* 2005, **280**:18543-18550.
126. Holt CE: **A single-cell analysis of early retinal ganglion cell differentiation in *Xenopus*: from soma to axon tip.** *J Neurosci* 1989, **9**:3123-3145.
127. Engert F, Tao HW, Zhang LI, Poo MM: **Moving visual stimuli rapidly induce direction sensitivity of developing tectal neurons.** *Nature* 2002, **419**:470-475.
128. Zhang LI, Tao HW, Poo M: **Visual input induces long-term potentiation of developing retinotectal synapses.** *Nat Neurosci* 2000, **3**:708-715.
129. Pratt KG, Aizenman CD: **Homeostatic regulation of intrinsic excitability and synaptic transmission in a developing visual circuit.** *J Neurosci* 2007, **27**:8268-8277.
130. Pratt KG, Dong W, Aizenman CD: **Development and spike timing-dependent plasticity of recurrent excitation in the *Xenopus* optic tectum.** *Nat Neurosci* 2008, **11**:467-475.
131. Wu GY, Deisseroth K, Tsien RW: **Spaced stimuli stabilize MAPK pathway activation and its effects on dendritic morphology.** *Nat Neurosci* 2001, **4**:151-158.
132. Dunah AW, Hueske E, Wyszynski M, Hoogenraad CC, Jaworski J, Pak DT, Simonetta A, Liu G, Sheng M: **LAR receptor protein tyrosine phosphatases in the development and maintenance of excitatory synapses.** *Nat Neurosci* 2005, **8**:458-467.
133. Millard TH, Bompard G, Heung MY, Dafforn TR, Scott DJ, Machesky LM, Futterer K: **Structural basis of filopodia formation induced by the IRSp53/MIM homology domain of human IRSp53.** *EMBO J* 2005, **24**:240-250.

134. Yamagishi A, Masuda M, Ohki T, Onishi H, Mochizuki N: **A novel actin bundling/filopodium-forming domain conserved in insulin receptor tyrosine kinase substrate p53 and missing in metastasis protein.** *J Biol Chem* 2004, **279**:14929-14936.
135. Alvarez CE, Sutcliffe JG, Thomas EA: **Novel isoform of insulin receptor substrate p53/p58 is generated by alternative splicing in the CRIB/SH3-binding region.** *J Biol Chem* 2002, **277**:24728-24734.
136. Yeh TC, Li W, Keller GA, Roth RA: **Disruption of a putative SH3 domain and the proline-rich motifs in the 53-kDa substrate of the insulin receptor kinase does not alter its subcellular localization or ability to serve as a substrate.** *J Cell Biochem* 1998, **68**:139-150.
137. Bockmann J, Kreutz MR, Gundelfinger ED, Bockers TM: **ProSAP/Shank postsynaptic density proteins interact with insulin receptor tyrosine kinase substrate IRSp53.** *J Neurochem* 2002, **83**:1013-1017.
138. Soltau M, Berhorster K, Kindler S, Buck F, Richter D, Kreienkamp HJ: **Insulin receptor substrate of 53 kDa links postsynaptic shank to PSD-95.** *J Neurochem* 2004, **90**:659-665.
139. Soltau M, Richter D, Kreienkamp HJ: **The insulin receptor substrate IRSp53 links postsynaptic shank1 to the small G-protein cdc42.** *Mol Cell Neurosci* 2002, **21**:575-583.
140. Miki H, Yamaguchi H, Suetsugu S, Takenawa T: **IRSp53 is an essential intermediate between Rac and WAVE in the regulation of membrane ruffling.** *Nature* 2000, **408**:732-735.
141. Krugmann S, Jordens I, Gevaert K, Driessens M, Vandekerckhove J, Hall A: **Cdc42 induces filopodia by promoting the formation of an IRSp53:Mena complex.** *Curr Biol* 2001, **11**:1645-1655.
142. Miki H, Takenawa T: **WAVE2 serves a functional partner of IRSp53 by regulating its interaction with Rac.** *Biochem Biophys Res Commun* 2002, **293**:93-99.
143. Clarke DW, Mudd L, Boyd FT Jr, Fields M, Raizada MK: **Insulin is released from rat brain neuronal cells in culture.** *J Neurochem* 1986, **47**:831-836.
144. Wei LT, Matsumoto H, Rhoads DE: **Release of immunoreactive insulin from rat brain synaptosomes under depolarizing conditions.** *J Neurochem* 1990, **54**:1661-1665.
145. Hori K, Yasuda H, Konno D, Maruoka H, Tsumoto T, Sobue K: **NMDA receptor-dependent synaptic translocation of insulin receptor substrate p53 via protein kinase C signaling.** *J Neurosci* 2005, **25**:2670-2681.
146. Mu Y, Poo MM: **Spike timing-dependent LTP/LTD mediates visual experience-dependent plasticity in a developing retinotectal system.** *Neuron* 2006, **50**:115-125.
147. Sanchez AL, Matthews BJ, Meynard MM, Hu B, Javed S, Cohen Cory S: **BDNF increases synapse density in dendrites of developing tectal neurons in vivo.** *Development* 2006, **133**:2477-2486.
148. Casson FR: **The treatment of schizophrenia by insulin shock.** *Med World* 1952, **76**:456-459.
149. Doroshov DB: **Performing a cure for schizophrenia: insulin coma therapy on the wards.** *J Hist Med Allied Sci* 2007, **62**:213-243.
150. Landreth G: **Therapeutic use of agonists of the nuclear receptor PPARgamma in Alzheimer's disease.** *Curr Alzheimer Res* 2007, **4**:159-164.
151. Revill P, Moral MA, Prous JR: **Impaired insulin signaling and the pathogenesis of Alzheimer's disease.** *Drugs Today (Barc)* 2006, **42**:785-790.
152. Watson GS, Craft S: **The role of insulin resistance in the pathogenesis of Alzheimer's disease: implications for treatment.** *CNS Drugs* 2003, **17**:27-45.
153. Zhao WQ, De Felice FG, Fernandez S, Chen H, Lambert MP, Quon MJ, Krafft GA, Klein WL: **Amyloid beta oligomers induce impairment of neuronal insulin receptors.** *Faseb J* 2008, **22**:246-60.
154. Hong M, Lee VM: **Insulin and insulin-like growth factor-1 regulate tau phosphorylation in cultured human neurons.** *J Biol Chem* 1997, **272**:19547-19553.
155. Schubert M, Gautam D, Surjo D, Ueki K, Baudler S, Schubert D, Kondo T, Alber J, Galldik N, Kustermann E, Arndt S, Jacobs AH, Krone W, Kahn CR, Bruning JC: **Role for neuronal insulin resistance in neurodegenerative diseases.** *Proc Natl Acad Sci USA* 2004, **101**:3100-3105.
156. Gasparini L, Gouras GK, Wang R, Gross RS, Beal MF, Greengard P, Xu H: **Stimulation of beta-amyloid precursor protein trafficking by insulin reduces intraneuronal beta-amyloid and requires mitogen-activated protein kinase signaling.** *J Neurosci* 2001, **21**:2561-2570.
157. Zhao L, Teter B, Morihara T, Lim GP, Ambegaokar SS, Ubeda OJ, Frautschy SA, Cole GM: **Insulin-degrading enzyme as a downstream target of insulin receptor signaling cascade: implications for Alzheimer's disease intervention.** *J Neurosci* 2004, **24**:11120-11126.
158. Vekrellis K, Ye Z, Qiu WQ, Walsh D, Hartley D, Chesneau V, Rosner MR, Selkoe DJ: **Neurons regulate extracellular levels of amyloid beta-protein via proteolysis by insulin-degrading enzyme.** *J Neurosci* 2000, **20**:1657-1665.
159. Qiu WQ, Walsh DM, Ye Z, Vekrellis K, Zhang J, Podlisny MB, Rosner MR, Safavi A, Hersh LB, Selkoe DJ: **Insulin-degrading enzyme regulates extracellular levels of amyloid beta-protein by degradation.** *J Biol Chem* 1998, **273**:32730-32738.
160. Farris W, Mansourian S, Chang Y, Lindsley L, Eckman EA, Froesch MP, Eckman CB, Tanzi RE, Selkoe DJ, Guenette S: **Insulin-degrading enzyme regulates the levels of insulin, amyloid beta-protein, and the beta-amyloid precursor protein intracellular domain in vivo.** *Proc Natl Acad Sci USA* 2003, **100**:4162-4167.
161. Terry RD, Masliah E, Salmon DP, Butters N, DeTeresa R, Hill R, Hansen LA, Katzman R: **Physical basis of cognitive alterations in Alzheimer's disease: synapse loss is the major correlate of cognitive impairment.** *Ann Neurol* 1991, **30**:572-580.
162. Sze CI, Troncoso JC, Kawas C, Mouton P, Price DL, Martin LJ: **Loss of the presynaptic vesicle protein synaptophysin in hippocampus correlates with cognitive decline in Alzheimer disease.** *J Neuropathol Exp Neurol* 1997, **56**:933-944.
163. Selkoe DJ: **Alzheimer's disease is a synaptic failure.** *Science* 2002, **298**:789-791.
164. DeKosky ST, Scheff SW: **Synapse loss in frontal cortex biopsies in Alzheimer's disease: correlation with cognitive severity.** *Ann Neurol* 1990, **27**:457-464.
165. Shankar GM, Bloodgood BL, Townsend M, Walsh DM, Selkoe DJ, Sabatini BL: **Natural oligomers of the Alzheimer amyloid-beta protein induce reversible synapse loss by modulating an NMDA-type glutamate receptor-dependent signaling pathway.** *J Neurosci* 2007, **27**:2866-2875.
166. Lacor PN, Buniel MC, Furlow PW, Clemente AS, Velasco PT, Wood M, Viola KL, Klein WL: **Abeta oligomer-induced aberrations in synapse composition, shape, and density provide a molecular basis for loss of connectivity in Alzheimer's disease.** *J Neurosci* 2007, **27**:796-807.
167. Bell KF, Ducatenzeiler A, Ribeiro-da-Silva A, Duff K, Bennett DA, Cuellar AC: **The amyloid pathology progresses in a neurotransmitter-specific manner.** *Neurobiol Aging* 2006, **27**:1644-1657.
168. Bell KF, de Kort GJ, Steggerda S, Shigemoto R, Ribeiro-da-Silva A, Cuellar AC: **Structural involvement of the glutamatergic presynaptic boutons in a transgenic mouse model expressing early onset amyloid pathology.** *Neurosci Lett* 2003, **353**:143-147.
169. Townsend M, Mehta T, Selkoe DJ: **Soluble Abeta inhibits specific signal transduction cascades common to the insulin receptor pathway.** *J Biol Chem* 2007, **282**:33305-33312.
170. Xie L, Helmerhorst E, Taddei K, Plewright B, Van Bronswijk W, Martins R: **Alzheimer's beta-amyloid peptides compete for insulin binding to the insulin receptor.** *J Neurosci* 2002, **22**:RC221.
171. De Felice FG, Vieira MN, Bomfim TR, Decker H, Velasco PT, Lambert MP, Viola KL, Zhao WQ, Ferreira ST, Klein WL: **Protection of synapses against Alzheimer's-linked toxins: insulin signaling prevents the pathogenic binding of Abeta oligomers.** *Proc Natl Acad Sci USA* 2009, **106**:1971-1976.
172. Liao FF, Xu H: **Insulin signaling in sporadic Alzheimer's disease.** *Sci Signal* 2009, **2**:pe36.
173. Lee HK, Kumar P, Fu Q, Rosen KM, Querfurth HW: **The insulin/Akt signaling pathway is targeted by intracellular beta-amyloid.** *Mol Biol Cell* 2009, **20**:1533-1544.
174. Cohen E, Bieschke J, Perciavalle RM, Kelly JW, Dillin A: **Opposing activities protect against age-onset proteotoxicity.** *Science* 2006, **313**:1604-1610.
175. Cohen E, Paulsson JF, Blinder P, Burstyn-Cohen T, Du D, Estepa G, Adame A, Pham HM, Holzenberger M, Kelly JW, Masliah E, Dillin A: **Reduced IGF-1 signaling delays age-associated proteotoxicity in mice.** *Cell* 2009, **139**:1157-1169.
176. Garey LJ, Ong WY, Patel TS, Kanani M, Davis A, Mortimer AM, Barnes TR, Hirsch SR: **Reduced dendritic spine density on cerebral cortical pyramidal neurons in schizophrenia.** *J Neurol Neurosurg Psychiatry* 1998, **65**:446-453.
177. Masliah E, Crews L, Hansen L: **Synaptic remodeling during aging and in Alzheimer's disease.** *J Alzheimers Dis* 2006, **9**:91-99.
178. Scheff SW, Price DA: **Alzheimer's disease-related alterations in synaptic density: neocortex and hippocampus.** *J Alzheimers Dis* 2006, **9**:101-115.
179. Einstein G, Buranosky R, Crain BJ: **Dendritic pathology of granule cells in Alzheimer's disease is unrelated to neuritic plaques.** *J Neurosci* 1994, **14**:5077-5088.

180. Kalus P, Muller TJ, Zuschratter W, Senitz D: **The dendritic architecture of prefrontal pyramidal neurons in schizophrenic patients.** *Neuroreport* 2000, **11**:3621-3625.
181. Tavazoie SF, Alvarez VA, Ridenour DA, Kwiatkowski DJ, Sabatini BL: **Regulation of neuronal morphology and function by the tumor suppressors Tsc1 and Tsc2.** *Nat Neurosci* 2005, **8**:1727-1734.
182. Garami A, Zwartkruis FJ, Nobukuni T, Joaquin M, Rocco M, Stocker H, Kozma SC, Hafen E, Bos JL, Thomas G: **Insulin activation of Rheb, a mediator of mTOR/S6K/4E-BP signaling, is inhibited by TSC1 and 2.** *Mol Cell* 2003, **11**:1457-1466.
183. Potter CJ, Huang H, Xu T: ***Drosophila* Tsc1 functions with Tsc2 to antagonize insulin signaling in regulating cell growth, cell proliferation, and organ size.** *Cell* 2001, **105**:357-368.
184. Dhavan R, Tsai LH: **A decade of CDK5.** *Nat Rev Mol Cell Biol* 2001, **2**:749-759.
185. Kelsch W, Mosley CP, Lin CW, Lois C: **Distinct mammalian precursors are committed to generate neurons with defined dendritic projection patterns.** *PLoS Biol* 2007, **5**:e300.
186. Ch'ng Q, Sieburth D, Kaplan JM: **Profiling synaptic proteins identifies regulators of insulin secretion and lifespan.** *PLoS Genet* 2008, **4**:e1000283.
187. Kodama E, Kuhara A, Mohri-Shiomi A, Kimura KD, Okumura M, Tomioka M, Iino Y, Mori I: **Insulin-like signaling and the neural circuit for integrative behavior in *C. elegans*.** *Genes Dev* 2006, **20**:2955-2960.
188. Sieburth D, Ch'ng Q, Dybbs M, Tavazoie M, Kennedy S, Wang D, Dupuy D, Rual JF, Hill DE, Vidal M, Ruvkun G, Kaplan JM: **Systematic analysis of genes required for synapse structure and function.** *Nature* 2005, **436**:510-517.
189. Tomioka M, Adachi T, Suzuki H, Kunitomo H, Schafer WR, Iino Y: **The insulin/PI 3-kinase pathway regulates salt chemotaxis learning in *Caenorhabditis elegans*.** *Neuron* 2006, **51**:613-625.
190. White MF, Yenush L: **The IRS-signaling system: a network of docking proteins that mediate insulin and cytokine action.** *Curr Top Microbiol Immunol* 1998, **228**:179-208.
191. Heung MY, Visegrady B, Futterer K, Machesky LM: **Identification of the insulin-responsive tyrosine phosphorylation sites on IRSp53.** *Eur J Cell Biol* 2008, **87**:699-708.
192. Kolomeets NS, Orlovskaya DD, Uranova NA: **Decreased numerical density of CA3 hippocampal mossy fiber synapses in schizophrenia.** *Synapse* 2007, **61**:615-621.
193. Kitamura T, Kahn CR, Accili D: **Insulin receptor knockout mice.** *Annu Rev Physiol* 2003, **65**:313-332.
194. Kaytor MD, Orr HT: **The GSK3 beta signaling cascade and neurodegenerative disease.** *Curr Opin Neurobiol* 2002, **12**:275-278.
195. Lovestone S, Killick R, Di Forti M, Murray R: **Schizophrenia as a GSK-3 dysregulation disorder.** *Trends Neurosci* 2007, **30**:142-149.

doi:10.1186/1749-8104-5-7

Cite this article as: Chiu and Cline: Insulin receptor signaling in the development of neuronal structure and function. *Neural Development* 2010 5:7.

Submit your next manuscript to BioMed Central and take full advantage of:

- Convenient online submission
- Thorough peer review
- No space constraints or color figure charges
- Immediate publication on acceptance
- Inclusion in PubMed, CAS, Scopus and Google Scholar
- Research which is freely available for redistribution

Submit your manuscript at
www.biomedcentral.com/submit

