



OPEN

The regional impact of the COVID-19 lockdown on the air quality in Ji'nan, China

Kun Li^{1,2,4}, Ruiqiang Ni^{1,2,4}, Tenglong Jiang³, Yaozhen Tian^{1,2}, Xinwen Zhang¹, Chuanrong Li^{1,2}✉ & Chunying Xie¹

A number of strict lockdown measures were implemented in the areas most affected by COVID-19 in China, including Ji'nan city, from 24 January to 7 February 2020. Due to these forced restrictions, the pollution levels in cities across the country drastically decreased within just a few days. Since traffic pollution and industrial emissions are important factors affecting regional air quality, congestion has a significant impact on the environment. Therefore, using the aid of air quality data for six pollutants (PM₁₀, PM_{2.5}, SO₂, NO₂, CO and O₃) from 11 monitoring stations (located in urban, suburban and urban-industrial regions) across Ji'nan, we employed the air quality index (AQI) to investigate the spatial pattern of air quality in the pre-COVID-19 (pre-COVID) and COVID-19-related lockdown (COVID lockdown) periods. The results showed that air quality significantly improved during the COVID lockdown period. Among the selected pollutants, compared to the corresponding pre-COVID levels, the greatest reduction was observed for the concentration of NO₂ (54.02%), while the smallest reduction was observed for the concentration of SO₂ (27.92%). The PM_{2.5} (38.73%), PM₁₀ (44.92%) and CO (30.60%) levels also decreased during the COVID lockdown period; only the O₃ concentration increased (37.42%) during this period. Overall, air quality improved by approximate improvements of 37.33% during the COVID lockdown period. Approximately 35.48%, 37.01% and 43.43% in the AQI were observed in urban, suburban and urban-industrial regions, respectively. Therefore, the AQI exhibited remarkable regional differences in Ji'nan. This study demonstrates the contributions of the transportation sector and local emissions to improving air quality in typical urban areas, and these research results can provide guidance for the further monitoring of air pollution in northern Chinese cities.

In the past 10 years, air pollution has become a major environmental problem in northern China. From 2013 to 2017, the Chinese government implemented the Air Pollution Prevention and Control Action Plan (APPCAP) to improve the quality of the ecological environment through the adoption of a number of control measures, and air quality has steadily improved in recent years¹. For example, in 2014–2018, decreasing levels of carbon monoxide (CO), nitrogen dioxide (NO₂), sulfur dioxide (SO₂), and inhalable and fine inhalable particulate matter (PM₁₀ and PM_{2.5}, respectively) were observed at 87%, 63%, 93%, 78% and 89%, respectively, of air quality monitoring stations². Specifically, these measures had a significant impact on reducing PM_{2.5} concentrations. However, many people in China are still exposed to polluted air³, which kills nearly 1 million people per year in China⁴. The APPCAP is unlikely to result in further major reductions in annual deaths attributable to PM_{2.5} pollution, and thus, more ambitious measures are needed to reduce the health effects of air pollution by 2030.

In late December 2019, pneumonia caused by a new type of coronavirus was first discovered in Wuhan, Hubei Province, China. The pathogen has been identified as Coronavirus 2 Severe Acute Respiratory Syndrome (SARS-CoV-2), which the World Health Organization (WHO) officially called Coronavirus Disease 2019 (COVID-19)⁵. To date, many studies have confirmed that COVID-19 can be transmitted through the air^{6–9}. Thus, control measures could be employed to prevent further COVID-19 infection¹⁰. To curb the rapid spread of COVID-19, the Chinese government initiated the highest level of emergency response in the national public health emergency response system and implemented a series of strict self-isolation, social distancing, traffic restriction, roadblock

¹Forestry College of Shandong Agricultural University, Tai'an 271018, Shandong, People's Republic of China. ²Mountain Tai Forest Ecosystem Research Station of State Forestry Administration/Key Laboratory of State Forestry Administration for Silviculture of the Lower Yellow River, Tai'an 271018, Shandong, China. ³Jinan Eco-environmental Monitoring Center of Shandong Province, Ji'nan 250014, Shandong, China. ⁴These authors contributed equally: Kun Li and Ruiqiang Ni. ✉email: chrliid@126.com

and prevention and control measures^{11–14}. These controls also limited pollutant emissions and improved air quality to a certain extent, for instance, by reducing the concentration of nitrous oxides (NO_x) by 77.3% and that of particulate matter (PM) by 200%¹⁵. However, previous studies have confirmed that even a substantial reduction in traffic emissions coincident with only a small reduction in industrial emissions will not help prevent serious air pollution in China¹⁶. For example, the opposite result was confirmed in Hubei, where pollution incidents often occurred due to the regional transmission of upstream air pollutants during the strictest lockdown period¹⁷.

Air pollutants comprise a mixture of chemical substances, including carbon oxides (CO_x), NO_x, ozone (O₃), sulfur oxides (SO_x) and (PM), which can increase respiratory infections^{5,18}. In addition, these ambient air pollutants help promote the spread of COVID-19^{5,19,20}, mainly by overexpression of angiotensin-converting enzyme 2 in respiratory cells²¹. Specifically, northern, one of the most densely populated areas in the world, has experienced heavy fog for the past 20 years²². Consequently, it was predicted that COVID-19 would spread at an accelerated rate in this environment. To prevent the rapid spread of COVID-19, strict restrictions (lockdowns), such as factory restrictions and traffic restrictions, have been implemented in various regions²³. These measures helped reduce most pollutant emissions, indicating that lockdowns can play a key role as a potential solution for reducing future air pollution²⁴. During these lockdowns, once the interfering factors were removed, a significant relationship between air pollution and COVID-19 infection was observed²⁰; notably, significant declines in NO_x, PM, SO_x, and CO and a significant increase in O₃ were observed during COVID-19-related lockdowns^{5,13,25,26}. However, there were obvious differences among different geographical environments. Many studies have shown that restrictions result in both direct and indirect contributions to air quality at the regional and global levels²⁷, such as in urban, suburban, and rural areas and in mining regions^{24,28}. COVID-19 has clearly had a multiscale effect on air quality. Nevertheless, thus far, it remains unclear how COVID-19 affects air quality at the urban scales and whether different regions have similar pollution characteristics. Most studies have focused on the characteristics of pollutant concentration changes in global or national regions with large spatial scales, but different regional economic structures have led to different decreases in air pollutant emissions and different magnitudes of air pollutant concentration changes during the epidemic control period, while relatively little attention has been paid to the characteristics of spatial pollutant concentration changes in cities where spatial scales require greater refinement.

Ji'nan city, is located in the transition zone between the mountainous area and the northern plain, and the topography is generally high in the south and low in the north, with a shallow basin shape. As the capital of Shandong Province, the economic development in Ji'nan ranks second in Shandong province, accounting for 13.3% of the Province's GDP in 2019²⁹. At the same time, Ji'nan is also one of the 15 subprovincial cities in China, serving as an important economic and transportation hub connecting the northern business district, the southern Yangtze River Delta business district, and the eastern and central parts of the Shandong Peninsula³⁰.

Recently, the air quality in Ji'nan has received considerable attention³¹. However, the air pollution problem has long been a vital factor limiting the development of Ji'nan city and surrounding regions. The special topography of Ji'nan city is not conducive to the diffusion of pollutants. The COVID-19 pandemic offers a unique opportunity to assess exactly how reducing local emissions can affect the air quality in megacities³². Our study aimed to analyse and assess the characteristics and shifts of air quality in different regions of Ji'nan city during the epidemic control period.

To determine the main changes in the concentrations of PM₁₀, PM_{2.5}, NO₂, SO₂, CO and O₃ and in the air quality index (AQI), in this study, we systematically analysed continuous 24 h data for particulate and gaseous pollutants at seven urban sites, three urban-industrial sites and one suburban site in Ji'nan. The average of each of these parameters was calculated from January 15–23, 2020, and in the lockout period from January 24 to February 7, 2020. The objective was to evaluate the relative change (%) and the average concentration difference (µg/m³) both in each pollutant and in the AQI between the two time periods (before the lockdown and during the lockdown) and among the three regions (urban, suburban and urban-industrial areas). Our results will provide a reference for assessing and formulating scientific emission reduction policies to improve the air quality of Ji'nan City and surrounding regions in the future.

Results and discussion

Overall characteristics of air pollutants. The results of previous studies indicated that local pollution is highly important in determining the emissions of air pollutant. Therefore, in this study, we estimated the changes in pollution and the AQI between the pre-COVID and COVID lockdown periods and among the different regions in Ji'nan. A comparison of the different pollutant concentrations analysed in this study shows that the concentrations of almost all pollutants decreased during the COVID lockdown period; only the concentration of O₃ increased continuously as the COVID lockdown period progressed (Fig. 1).

During the observation period, the daily average mass concentrations of PM₁₀, PM_{2.5}, SO₂, NO₂, CO, and O₃ in Ji'nan were 137.09 µg/m³, 101.35 µg/m³, 22.70 µg/m³, 39.77 µg/m³, 1.28 mg/m³, and 71.84 µg/m³, respectively (Fig. 2). The mass concentrations of PM₁₀ and PM_{2.5} exceeded the daily average Grade I values (50 µg/m³ and 35 µg/m³) of the Ambient Air Quality Standard of China (CAAQS, GB 3095-2012) during the whole observation period. In contrast, the mass concentrations of NO₂, SO₂, CO and O₃ were substantially lower than the daily average Grade I values (80 µg/m³, 50 µg/m³, 4 mg/m³ and 100 µg/m³, respectively) of the CAAQS each day. During the pre-COVID period, the daily average mass concentrations of PM₁₀, PM_{2.5}, SO₂, NO₂, CO, and O₃ in Ji'nan were 177.03 µg/m³, 125.94 µg/m³, 26.39 µg/m³, 54.52 µg/m³, 1.59 mg/m³, and 60.72 µg/m³, respectively. The mass concentrations of all these pollutants, except NO₂, CO and O₃, exceeded the daily average Grade I values of the CAAQS. The mass concentration trends during the COVID lockdown period were consistent with those during the pre-COVID period, but there were significant differences in the concentrations between the periods.

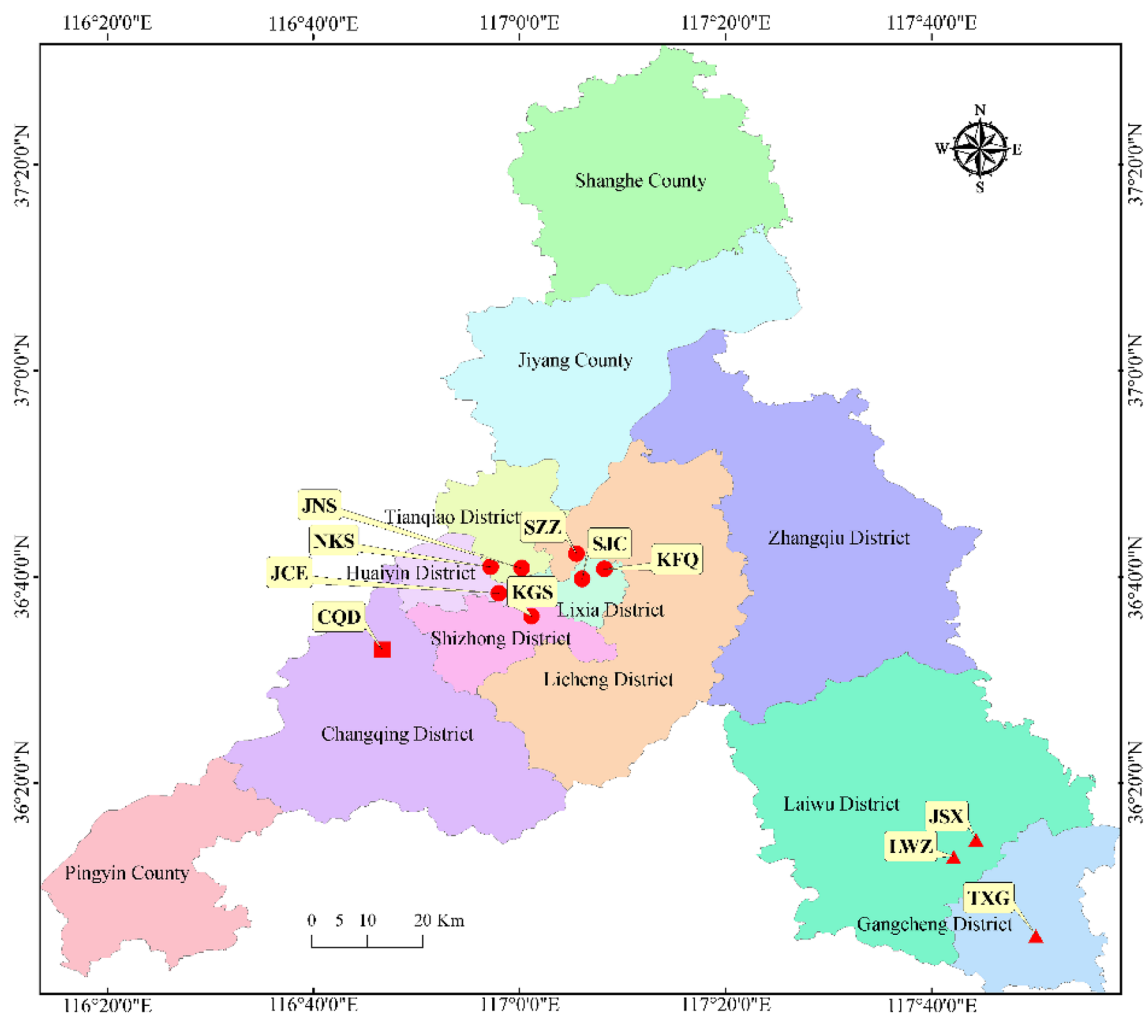


Figure 1. Spatial distributions of the different observation sites and industrial enterprises above a designated size threshold in Ji'nan city. JCE, machine tool factory No. 2; LSX, technical college; JNS, Ji'nan fourth building group; KFQ, economic development zone; KGS, Kegansuo; LWZ, Laiwu memorial hall; NKS, Agricultural Scientific Institute; SZZ, Seed warehouse of Shandong Province; SJC, Ji'nan monitoring station; TXG, Taixing company; CQD, Changqing school. Red circles, red triangles and red squares represent stations in urban, urban-industrial and suburban regions, respectively. The map of Observation site was completed by the geostatistical analysis module of ArcGIS (version 10.3, <https://developers.arcgis.com/>).

In summary, the air quality in Ji'nan was generally good from January 24 to February 7, 2020, mainly due to the strict prevention and control measures for COVID-19.

Effects of regional differences and lockdown on air pollutants. Our results reveal that the PM_{10} , $PM_{2.5}$, NO_2 , SO_2 , CO and O_3 concentrations in the urban, suburban and urban-industrial regions differed significantly between the COVID lockdown and pre-COVID periods (Figs. 3, 4).

NO_x , one of the most important pollutants and a major health hazard, was studied in different countries across the world during COVID-19-related lockdowns. In all three regions studied herein, the highest rate of reduction in NO_2 concentrations was observed during the COVID lockdown period (Fig. 4), with the NO_2 levels in the COVID lockdown period being 54.02% on average lower than those during the pre-COVID period (53.07% in urban area, 48.31% in the suburban areas and 55.74% in the urban-industrial area) (Fig. 4); this reduction is greater than that reported at other sites by 26–42%¹¹ and 14–38%¹⁸ but lower than that (50–62%) in Barcelona and Madrid in Spain³³. As shown in Fig. 3E, the NO_2 concentrations in the urban, suburban and urban-industrial areas were significantly higher in the pre-COVID period than in the COVID lockdown period, with the pre-COVID the NO_2 levels in the urban area being 13.46% and 27.63% higher than those in the suburban and urban-industrial areas, respectively. During the COVID-19 lockdown period, the NO_2 levels in urban areas were 4.69% and 31.75% higher than those in the suburban and urban-industrial areas, respectively. Blocking and controlling the air pollution associated with COVID-19 has helped reduce ground NO_2 levels³⁴ and this effect might be correlated with the tropospheric NO_2 column density²⁷. Among all sources of NO_2 , automobile emissions and power generation are the most important⁵. A systematic review confirmed that a short-term increase in the NO_2 concentration in urban areas correlates to an increase in the number of pneumonia hospitalizations^{5,35}.

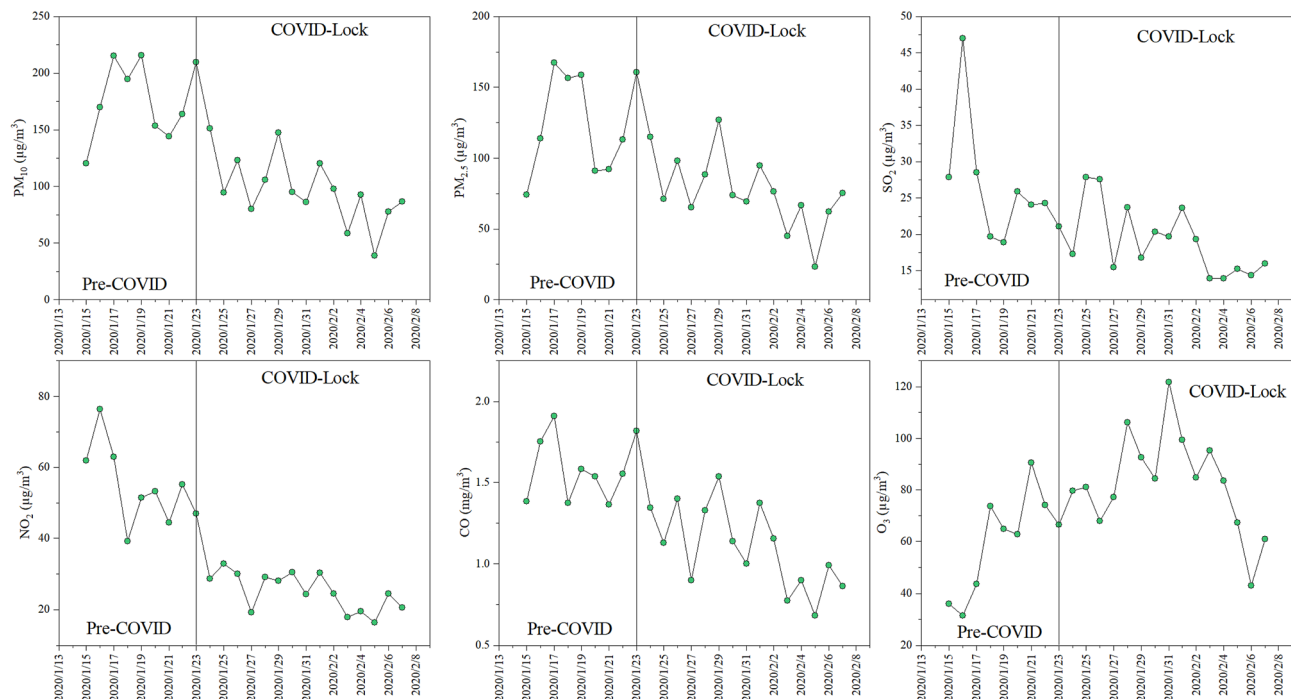


Figure 2. Temporal variations in the mass concentrations of air pollutants (PM_{10} , $PM_{2.5}$, NO_2 , SO_2 , CO and O_3) at the urban site in Ji'nan during the observation period.

The trends in the CO concentration were similar to those in the NO_2 level. During the COVID-lockdown period, the average CO mass concentrations in the urban, suburban and urban industrial areas were 1.08 mg/m^3 , 1.16 mg/m^3 and 1.14 mg/m^3 , respectively, which decreased by 27.78%, 29.46% and 36.61%, respectively, compared with those during the pre-COVID period. The highest levels of PM_{10} were also observed during the pre-COVID period in the urban, suburban, and urban-industrial areas in Ji'nan (Fig. 4). The reductions in $PM_{2.5}$ and CO emissions in urban and urban-industrial areas are generally higher than those in suburban areas²⁵, supporting our findings. Notably, $PM_{2.5}$ and CO are generated mainly by construction activities and from road dust, natural soil dust and dust from urban-industrial activities³⁶. In contrast, the differences in the PM_{10} concentrations among the three regions were not significant during either the pre-COVID period or the COVID-lockdown period (Fig. 3A), which suggests that particles in Ji'nan are strongly diffused. However, the COVID lockdown period had a significant effect on the PM_{10} concentrations, with 42.86%, 44.26% and 50.60% differences in the PM_{10} concentration between the pre-COVID and COVID lockdown periods in the urban, suburban and urban-industrial areas, respectively (average of 44.92%, Fig. 4). The main reasons for the decreases in the concentration of PM were the severe restrictions on vehicle traffic, the cessation of industrial activities, and the stopping of construction projects, which are important sources of floating dust in the urban air³⁷. Despite the overall consistency among the observed changes in all regions for the different air pollutants (except O_3), at the regional level, some differences were statistically significant, while others were not due to the variability among stations, with the differences being more pronounced at the urban, suburban and urban-industrial stations.

O_3 is a secondary pollutant involved in different atmospheric reaction mechanisms and acts as both a source and sink. Generally, the impact of lockdowns on O_3 was mixed, with its levels generally falling within $\pm 20\%$ ³⁸, but total O_3 levels remained relatively stable¹⁸. In this study, by comparing the regional mean concentrations throughout the COVID-19 period, we found that O_3 concentrations were higher during the COVID lockdown period than during the pre-COVID period, especially in the urban regions (Fig. 3). Furthermore, the mean O_3 concentration at all stations during the COVID lockdown period was 37.42% higher than that during the pre-COVID period (46.84% in the urban areas, 18.27% in the suburban area, and 19.84% in the urban-industrial areas) (Fig. 4); this finding is consistent with the outcomes of other studies, which reported that O_3 concentrations increased by (on average) 20% during lockdowns³⁹, potentially due, in part, to atmospheric reactivity³⁷. The higher lockdown O_3 concentrations can be attributed to the following three reasons: (1) low PM concentrations can result in more sunlight passing through the atmosphere, encouraging increased photochemical activities and thus higher O_3 production⁴⁰; (2) a reduction in NO_x emissions increases O_3 formation⁴¹; and (3) lower $PM_{2.5}$ concentrations means their role as a sink for hydroperoxy radicals (HO_2) is less effective, which would increase peroxy radical-mediated O_3 production⁴². During the pre-COVID period, the O_3 levels were not significantly different among the region, and the same results were observed during the COVID lockdown period. However, in the urban and urban-industrial areas, the O_3 levels during the COVID lockdown period were significantly higher than those in the pre-COVID period ($p < 0.001$ and $p < 0.01$, respectively) (Fig. 3F). Such increases in O_3 are in line with a 17.56% O_3 increase in industrial locations in Delhi, India, with minor O_3 increases of up to 0.78% during the lockdown period⁴³.

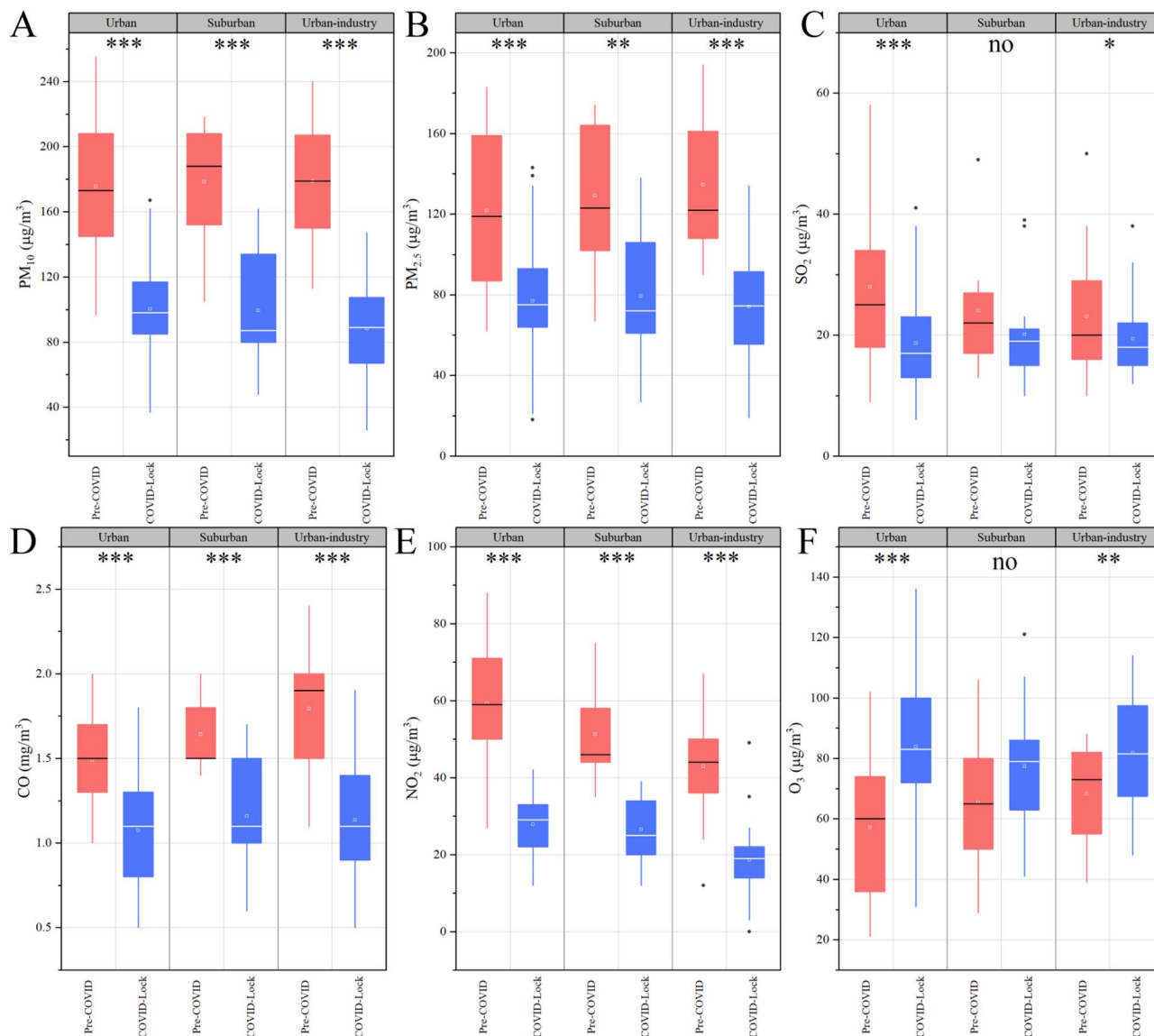


Figure 3. Mean concentrations (\pm SD, mg/m^3) of PM₁₀, PM_{2.5}, NO₂, SO₂, CO and O₃ during the pre-COVID and COVID lockdown periods in 2020; the values were determined by combining the urban, suburban and urban-industrial areas at the regional scale. *, ** and *** represent significant differences between the pre-COVID and COVID lockdown periods in the same region (Duncan test, *p=0.05; **p=0.01; ***p=0.001), with nonsignificant results being excluded.

Relationships between different pollutants and region in different research stages. As particles scatter and absorb sunlight, air pollution reduces the amount of sunlight reaching the Earth. It has been confirmed that reducing PM emissions had the greatest influence on the improvement of air quality during COVID-related lockdowns, but secondary formation was enhanced after these lockdowns ended¹³. These changes affect the distributions of other pollutants. Specifically, PM_{2.5} is best explained by emissions from the transportation and industrial sectors⁴⁴. Some studies have confirmed that PM_{2.5} could trigger COVID-19 spread and increase lethality^{45,46}. Therefore, we estimated the relationships of PM_{2.5} with the AQI and the PM₁₀, NO₂, SO₂, CO and O₃ concentrations in the air of Ji'nan during the pre-COVID and COVID lockdown periods (Fig. 5). We found that the lockdown affected the relationship between PM_{2.5} and NO₂, which were relatively weakly or not correlated ($r = -0.15$, urban; $r = 0.052$, urban-industrial; $r = -0.35$, suburban) in the pre-COVID period but significantly correlated ($r = 0.60$, urban; $r = 0.75$, urban-industrial; $r = 0.70$, suburban) during the COVID lockdown period. This finding is consistent with the results of Mahato et al.⁴³. This clearly means that greater control of regional transport activity is a key factor in reducing pollutant levels as regional transport is completely restricted during the lockdown^{43,47}, and there were restrictions on human activities, transportation, and factories during the lockdown period. The increase in the PM_{2.5} concentration may also be due to the incineration of straw and the use of coal-fired power plants in the neighbouring upwind states, leading to the transport of pollutants to urban areas³⁷, and may be linked to the distance from coast⁴⁸. Moreover, air temperature is an important parameter that affects

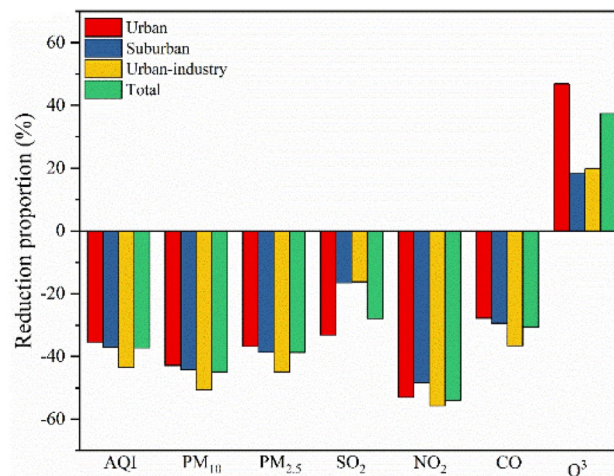


Figure 4. General reductions in the concentrations of major air pollutants.

the dispersion of air pollutants. An increase in air temperature due to a rise in solar radiation also allows more sunlight to pass through the atmosphere, encouraging increased photochemical activities and thus enhancing O₃ production⁴⁰. In this study, we found that the average temperatures during the pre-COVID period and COVID lockdown were 2.75 °C and 2.91 °C, respectively. This also indirectly confirms the influence of meteorological conditions on air quality during the lockdown period.

COVID-19-related lockdowns can improve the air quality index. Figure 6 shows the change in the AQI and the corresponding dominant distribution characteristics during the analysis period. Nations have implemented various containment measures during the COVID-19 pandemic that have resulted in both positive and negative environmental impacts⁴⁹. Nevertheless, a significant improvement in the AQI was observed in the COVID lockdown period in this study. This improvement was caused by a reduction in emissions from the transportation and industry sectors^{44,50}. During the pre-COVID period, the AQI was generally poor and moderate in all regions, while during the COVID lockdown period, the AQI was generally good, ranging from satisfactory to moderate (Figs. 6A, 7B). Although there was still considerable room for improvement during the COVID lockdown period, the urban-industrial regions had the best air quality in Ji'nan; indeed, only urban-industrial regions obtained an AQI lower than 100 (Fig. 6C). In areas affected by the transportation and industrial sectors, air quality improved by nearly 60%⁴³, especially up to 75% in Tehran⁵¹. In this study, a 37.33% reduction in the AQI was observed during the COVID lockdown period compared to the pre-lockdown period (Fig. 6D). Approximate reductions of 35.48%, 37.01% and 43.43% were observed in the urban, suburban and urban-industrial regions, respectively, and there was a significant difference in the AQI between the COVID lockdown and pre-COVID periods (Fig. 6C). Thus, the high AQIs at the different sites during the implementation of government intervention measures may have been influenced primarily by heavy pollution from industrial sources⁵². Therefore, the AQI showed remarkable regional differences due to industrial emissions in Ji'nan, where the COVID-19-related lockdown prevented these emissions.

Principal component analysis (PCA). To identify the effects of the different regions and lockdown measures on the air pollutant concentrations, an ordination diagram of air pollutants based on PCA was created using Canoco 5.0, as shown in Fig. 7. In this figure, features with narrow included angles are positively correlated, features at wide angles are negatively correlated, and features at a right angle to one another are not correlated; additionally, the neighbourhood distance between factors is similarly used to calculate the corresponding area and congestion period. Figure 7A illustrates two main patterns of the influence of the COVID lockdown on air pollutants. The first two axes explained approximately 80.6% of the total variance (63.6% by PC1 and 17.0% by PC2) in the pollutant concentrations during the COVID lockdown period (Fig. 7A). The lockdown of the city and the shutdown of industrial regions prevented the spread and emission of pollution. At the regional scale (Fig. 7B), the first two axes explain 73.7% of the total variance (55.7% by PC1 and 18.0% by PC2) in the COVID lockdown period; these results indicated that regions changed the distance pattern and accelerated the movement of pollutant patterns. In urban regions, SO₂ and NO₂ were the main pollutants, while in suburban and urban-industrial regions, PM_{2.5} was the main pollutant. Previous studies have confirmed that the primary anthropogenic sources of PM, CO, NO₂, and SO₂ are the burning of fossil fuels in vehicles and the regional transport of these pollutants due to stubble burning in upwind areas; a combination of both of these sources can also occur^{37,53}. In this study, the air pollutants exhibited clear patterns during the pre-COVID and COVID lockdown periods in Fig. 7B. The monitoring stations can be clearly separated during the pre-COVID and COVID lockdown periods, but during the COVID lockdown period, stations cannot be distinctly separated at the regional scale. PM_{2.5} and SO₂ were the main urban-industrial and urban pollutants, respectively. Overall, the concentrations of PM_{2.5}, PM₁₀, CO, NO₂, SO₂ and AQI were positively related to the COVID lockdown period, whereas the O₃ concentration showed a negative association with the COVID lockdown period. Numerous studies suggest that the lockdown

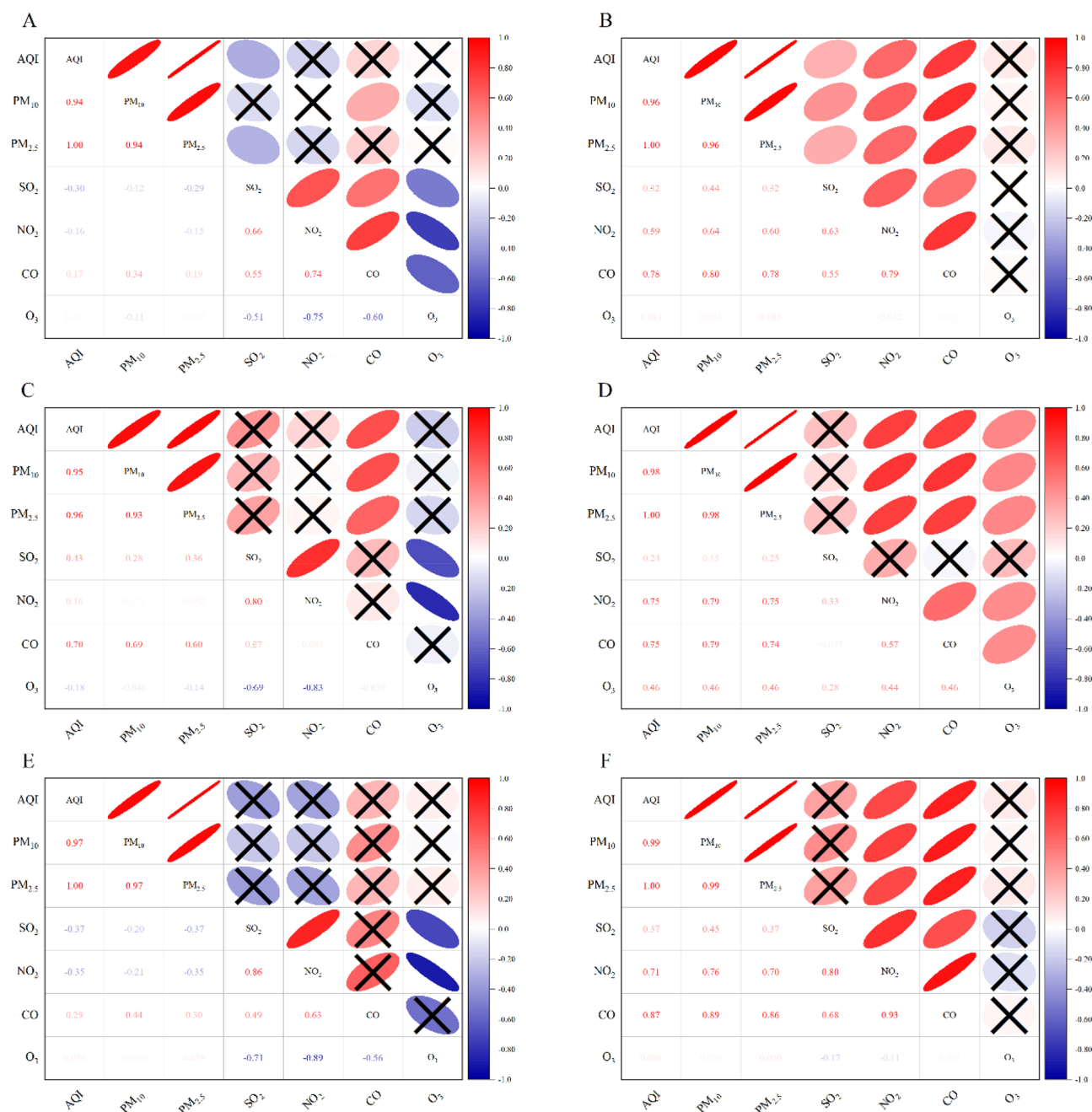


Figure 5. Pearson correlation between various pollutants during different phases and at the different regional sites during the study period. (A,C,E) represent the urban, urban-industrial and suburban areas in the pre-COVID period, respectively, while (B,D,F) represent the urban, urban-industrial and suburban areas in the COVID lockdown period, respectively. × represents a nonsignificant correlation at the 0.05 level.

measures related to COVID-19 pandemic caused significant decreases in the concentrations of PM_{2.5}, NO₂, PM₁₀, SO₂ and CO globally while O₃ concentration increased^{54,55}. In our study, the results are quite in accord with these conclusions.

Conclusion and suggestions for intervention

During the COVID lockdown period, human activities were greatly reduced, causing significant reductions in industrial operations and traffic activities, which further led to emissions reductions. In this study, we used the city of Ji'nan as a case study to investigate the effects of the COVID lockdown on air quality. We found that different air pollutants reacted significantly differently to the restrictions.

1. The air quality in Ji'nan improved considerably during the COVID lockdown, with the NO₂ exhibiting the greatest reduction among all six standard pollutants (excepting O₃).

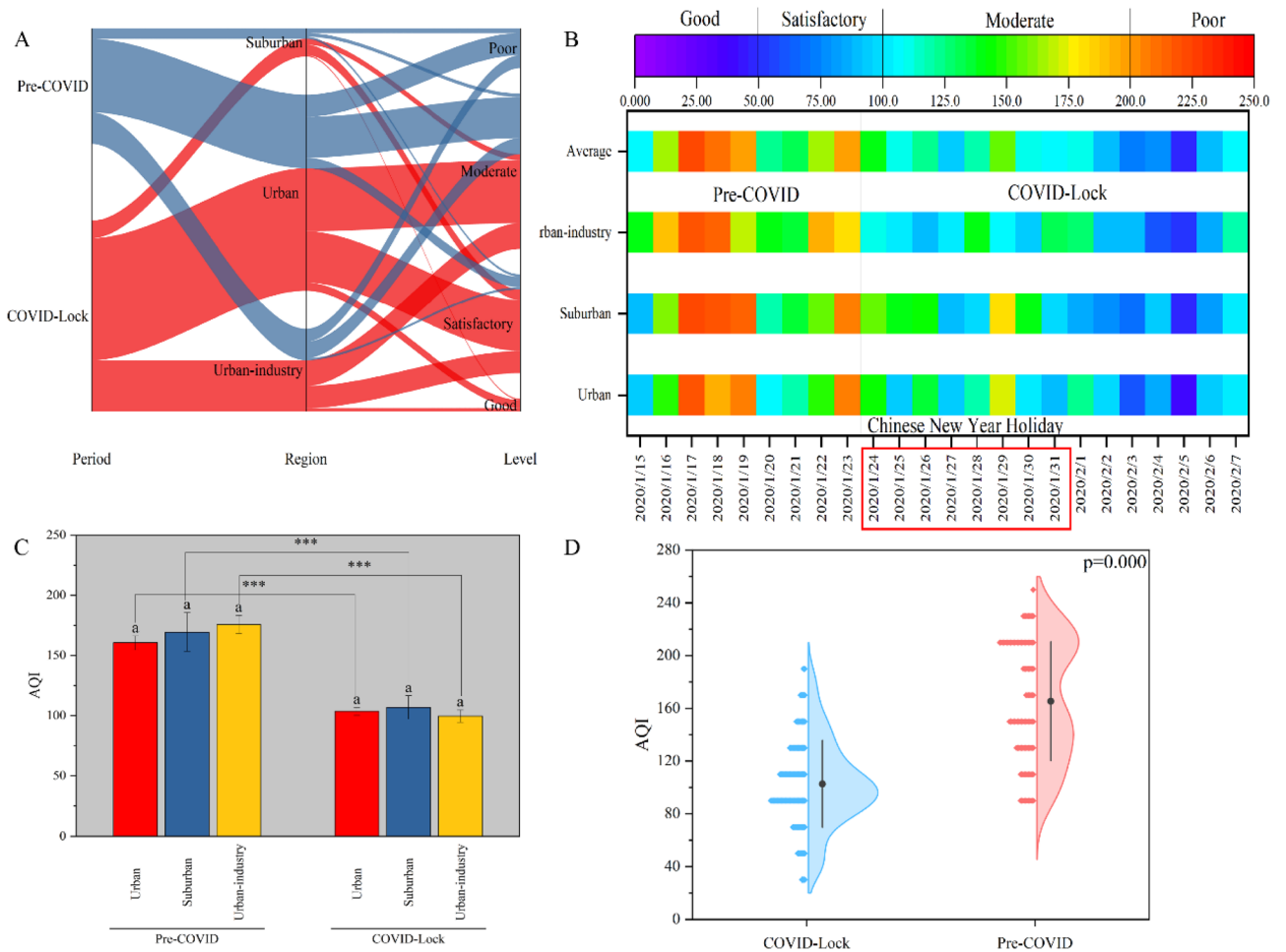


Figure 6. AQI values determined from data collected at the Ji'nan monitoring stations from 15 January to 7 February. **(A)** The parallel plot shows how the AQI level differs among the urban, suburban, urban-industrial areas. **(B)** AQI values determined as time series; **(C)** comparison of the AQI levels among different regions during the pre-COVID and lockdown period; **(D)** comparison of AQI between the pre-COVID and lockdown periods.

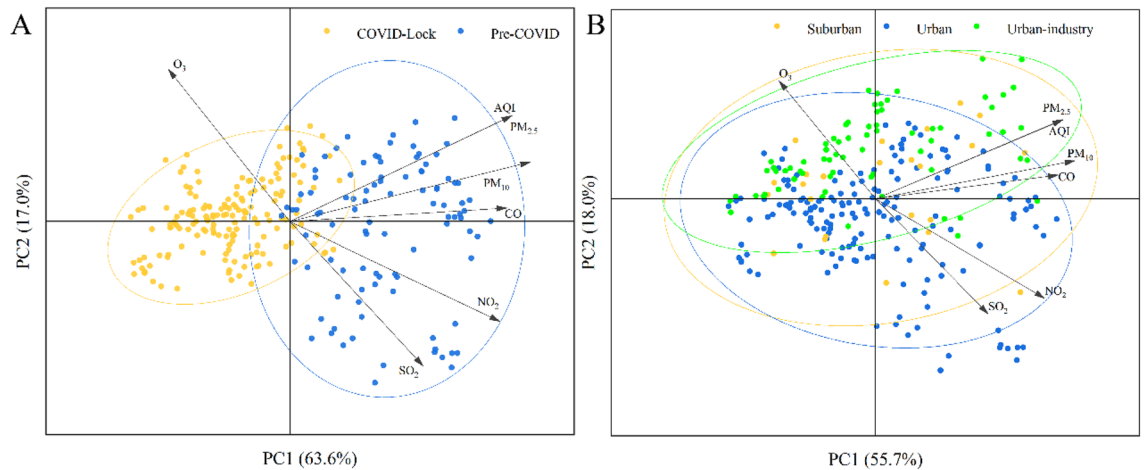


Figure 7. Principal component analysis (PCA) of air pollutants during the pre-COVID and COVID lockdown periods **(A)** and in urban, suburban and urban-industrial areas **(B)**.

AQI	PM ₁₀ (24-h average µg/m ³)	PM _{2.5} (24-h average µg/m ³)	SO ₂ (24-h average µg/m ³)	NO ₂ (24-h average µg/m ³)	CO (24-h average mg/m ³)	O ₃ (8-h average µg/m ³)
0	0	0	0	0	0	0
50	50	35	50	40	2	100
100	150	75	150	80	4	160
150	250	115	475	180	14	215
200	350	150	800	280	24	265
300	420	250	1600	565	36	800
400	500	350	2100	750	48	–
500	600	500	2620	940	60	–

Table 1. Pollutant concentration limits.

- The Pearson correlation differed in different periods; i.e., PM_{2.5} was not correlated with NO₂ during the pre-COVID period but was significantly correlated with NO₂ during the COVID lockdown period.
- The regional blocking of air pollution can have a substantial impact on urban industrial areas.
- The implementation of lockdown measures had a more significant effect on the pollutant concentrations than the region.

Suggestions for intervention. Our analysis has several limitations. Due to a lack of data, we were unable to study the impacts of all the elements of the crisis in the context of the city-scale response. Therefore, it is not clear which elements of the national emergency measures were most effective in reducing air pollution.

Moreover, lockdowns limit emissions and the spread of air pollutants over only a short period; in the long run, we should focus on how to build an ecological city. Pollution management systems should be implemented at different scales, blocking off the sources and transmission paths of different pollutants. Additionally, the Chinese government is carrying out projects to protect and restore the ecologies of full-array ecosystems (mountains, rivers, forests, farmlands, lakes, and grasslands) and systematically resolving ecological environmental problems. The ecological protection and restoration of entire ecosystems are important for constructing an ecological civilization and constitute effective measures for promoting green development; thus, corresponding steps are needed to promote ecological, environmental and economic development.

Materials and methods

Observation sites. Ji'nan is located in northern China and includes eleven observation sites covering the urban area (JNS, NKS, JCE, KGS, SZZ, SJC and KFQ), urban-industrial area (JSX, LWZ and TXG), and suburban area (CQD) (Fig. 1). Urban land is mainly located in the city centre, which is the area with the highest population density, while the urban-industrial area is located in the industrial zone, and the suburban area is in the southern mountainous region. Due to the improved ecological environment and air quality, ecotourism has become popular in the suburbs. The selected observation points represent different locations and environments and may reflect different air quality levels in Ji'nan.

Air pollution data. Air pollution data were collected from the Ji'nan Environmental Monitoring Center of Shandong Province, which monitored and analysed the air quality (data were obtained from Tenglong Jiang). Daily concentrations were measured for six air pollutants: particles with a diameter ≤ 2.5 µm (PM_{2.5}) and particles with a diameter ≤ 10 µm (PM₁₀), sulfur dioxide (SO₂), carbon monoxide (CO), nitrogen dioxide (NO₂), and ozone (O₃).

AQI calculation. The air quality index (AQI) is a dimensionless index that is calculated according to the Chinese ambient air quality standard (GB3095-2012), and the calculation includes the above six pollutants. The subindex of each pollutant is first calculated according to the fractional concentration and is labelled IAQI_p⁵².

$$AQI_i = \frac{IN_{HI} - IN_{LO}}{B_{HI} - B_{LO}} \times (C_i - B_{LO}) + IN_{LO} \quad (1)$$

where C_i is the mass concentration of pollutant i , B_{HI} and B_{LO} are breakpoint concentrations greater and smaller than C_i in Table 1, and IN_{HI} and IN_{LO} are the air quality subindices corresponding to the B_{HI} and B_{LO} values. The overall AQI is the maximum AQI_i, and the corresponding pollutant is the dominant pollutant. A high AQI indicates that serious and concentrated air pollution not only affects the outdoor activities of humans but also damages their health.

Observation period division. Our field observations were conducted from 15 January 2020 to 7 February 2020. Based on a local investigation in Ji'nan, we identified several important dates, such as 24 January (Chinese New Year's Eve) and 24 January (the first day of the strictest lockdown in Shandong Province). The novel coronavirus was not confirmed as an epidemic in Shandong Province. Industrial operations and traffic continued to be normal in most regions in China during this period. In Shandong Province, we identified a pre-COVID period (15 January to 23 January 2020) and COVID lockdown period (24 January to 7 February 2020).

Statistical analysis. In this paper, a comparative analysis was conducted to analyse the effects of the COVID-19 lockdown on the atmospheric environment at various monitoring stations. A preliminary analysis of the experimental data received from each monitoring station was performed to identify abnormal data and organize the data in a table based on 1-h averages. First, it is important to use time series to study the trends of the six pollutants. To compare the results obtained on different days, mean and standard deviation values were used. Second, in the COVID-19 lockdown period (including in the urban area), the statistical significance of the changes in the average daily concentrations of the six pollutants and the AQI was assessed. Contaminants were individually evaluated to identify possible autocorrelation in the sample data. The normality of the data was analysed, and transforms were performed as needed to satisfy the model assumptions. A bivariate Pearson correlation analysis of the pollutants and meteorological factors was also performed with a significance level of $\alpha = 0.05$. Data analysis was conducted in SPSS 26.0 (SPSS Inc. IBM Corporation, Armonk, NY, USA). The map of Observation site (Fig. 1) was completed by the geostatistical analysis module of ArcGIS (version 10.3, <https://developers.arcgis.com/>). Plots were created in Origin 2020. Principal component analyses (PCAs) were performed separately for each of the periods and regions (two periods and three regions) by using Canoco 5.0.

Received: 24 November 2021; Accepted: 5 July 2022

Published online: 15 July 2022

References

- Guo, H. *et al.* Spatial and temporal variations of air quality and six air pollutants in China during 2015–2017. *Sci. Rep.* **9**, 1–11. <https://doi.org/10.1038/s41598-019-50655-6> (2019).
- Fan, H., Zhao, C. & Yang, Y. A comprehensive analysis of the spatio-temporal variation of urban air pollution in China during 2014–2018. *Atmos. Environ.* **220**, 117066. <https://doi.org/10.1016/j.atmosenv.2019.117066> (2020).
- Shen, F. *et al.* Temporal variations of six ambient criteria air pollutants from 2015 to 2018, their spatial distributions, health risks and relationships with socioeconomic factors during 2018 in China. *Environ. Int.* **137**, 105556. <https://doi.org/10.1016/j.envint.2020.105556> (2020).
- Yue, H., He, C., Huang, Q., Yin, D. & Bryan, B. A. Stronger policy required to substantially reduce deaths from PM_{2.5} pollution in China. *Nat. Commun.* **11**, 1462. <https://doi.org/10.1038/s41467-020-15319-4> (2020).
- Zhang, X. *et al.* Associations between air pollution and COVID-19 epidemic during quarantine period in China. *Environ. Pollut.* **268**, 115897. <https://doi.org/10.1016/j.envpol.2020.115897> (2021).
- Zhang, Z., Xue, T. & Jin, X. Effects of meteorological conditions and air pollution on COVID-19 transmission: Evidence from 219 Chinese cities. *Sci. Total Environ.* **741**, 140244. <https://doi.org/10.1016/j.scitotenv.2020.140244> (2020).
- Yao, M., Zhang, L., Ma, J. & Zhou, L. On airborne transmission and control of SARS-Cov-2. *Sci. Total Environ.* **731**, 139178. <https://doi.org/10.1016/j.scitotenv.2020.139178> (2020).
- Yao, Y. *et al.* Association of particulate matter pollution and case fatality rate of COVID-19 in 49 Chinese cities. *Sci. Total Environ.* **741**, 140396. <https://doi.org/10.1016/j.scitotenv.2020.140396> (2020).
- Naqvi, H. R. *et al.* Improved air quality and associated mortalities in India under COVID-19 lockdown. *Environ. Pollut.* **268**, 115691. <https://doi.org/10.1016/j.envpol.2020.115691> (2021).
- ChinaStateCouncil. *The a New Coronavirus Disease (Covid-19) Prevention and Control* (2020).
- Wang, Z. *et al.* Impacts of COVID-19 lockdown, Spring Festival and meteorology on the NO₂ variations in early 2020 over China based on in-situ observations, satellite retrievals and model simulations. *Atmos. Environ.* **244**, 117972. <https://doi.org/10.1016/j.atmosenv.2020.117972> (2021).
- Wang, S. *et al.* Responses of decline in air pollution and recovery associated with COVID-19 lockdown in the Pearl River Delta. *Sci. Total Environ.* **756**, 143868. <https://doi.org/10.1016/j.scitotenv.2020.143868> (2021).
- Zheng, H. *et al.* Significant changes in the chemical compositions and sources of PM_{2.5} in Wuhan since the city lockdown as COVID-19. *Sci. Total Environ.* **739**, 140000. <https://doi.org/10.1016/j.scitotenv.2020.140000> (2020).
- Bao, R. & Zhang, A. Does lockdown reduce air pollution? Evidence from 44 cities in northern China. *Sci. Total Environ.* **731**, 139052. <https://doi.org/10.1016/j.scitotenv.2020.139052> (2020).
- Mousazadeh, M., Paital, B., Naghdali, Z., Hashemi, M. & Emamjomeh, M. M. Positive environmental effects of the coronavirus 2020 episode: A review. *Environ. Dev. Sustain.* **23**(9), 12738–12760 (2021).
- Wang, P., Chen, K., Zhu, S., Wang, P. & Zhang, H. Severe air pollution events not avoided by reduced anthropogenic activities during COVID-19 outbreak. *Resour. Conserv. Recycl.* **158**, 104814. <https://doi.org/10.1016/j.resconrec.2020.104814> (2020).
- Shen, L. *et al.* Importance of meteorology in air pollution events during the city lockdown for COVID-19 in Hubei Province, Central China. *Sci. Total Environ.* **754**, 142227. <https://doi.org/10.1016/j.scitotenv.2020.142227> (2021).
- Wyche, K. P. *et al.* Changes in ambient air quality and atmospheric composition and reactivity in the South East of the UK as a result of the COVID-19 lockdown. *Sci. Total Environ.* **755**, 142526. <https://doi.org/10.1016/j.scitotenv.2020.142526> (2021).
- Zambrano-Monserrate, M. A., Ruano, M. A. & Sanchez-Alcalde, L. Indirect effects of COVID-19 on the environment. *Sci. Total Environ.* **728**, 138813. <https://doi.org/10.1016/j.scitotenv.2020.138813> (2020).
- Zhu, Y., Xie, J., Huang, F. & Cao, L. Association between short-term exposure to air pollution and COVID-19 infection: Evidence from China. *Sci. Total Environ.* **727**, 138704. <https://doi.org/10.1016/j.scitotenv.2020.138704> (2020).
- Paital, B. & Agrawal, P. K. Air pollution by NO₂ and PM_{2.5} explains COVID-19 infection severity by overexpression of angiotensin-converting enzyme 2 in respiratory cells: A review. *Environ. Chem. Lett.* **19**, 25–42 (2021).
- Tian, D. Y. *et al.* Characteristic and spatiotemporal variation of air pollution in Northern China based on correlation analysis and clustering analysis of five air pollutants. *J. Gerontol. Ser. A Biol. Med. Sci.* <https://doi.org/10.1029/2019jd031931> (2020).
- Briz-Redon, A., Belenguer-Sapina, C. & Serrano-Aroca, A. Changes in air pollution during COVID-19 lockdown in Spain: A multi-city study. *J. Environ. Sci.* **101**, 16–26. <https://doi.org/10.1016/j.jes.2020.07.029> (2021).
- Ranjan, A. K., Patra, A. K. & Gorai, A. K. Effect of lockdown due to SARS COVID-19 on aerosol optical depth (AOD) over urban and mining regions in India. *Sci. Total Environ.* **745**, 141024. <https://doi.org/10.1016/j.scitotenv.2020.141024> (2020).
- Yuan, Q. *et al.* Spatiotemporal variations and reduction of air pollutants during the COVID-19 pandemic in a megacity of Yangtze River Delta in China. *Sci. Total Environ.* **751**, 141820. <https://doi.org/10.1016/j.scitotenv.2020.141820> (2021).
- Zoran, M. A., Savastru, R. S., Savastru, D. M. & Tautan, M. N. Assessing the relationship between surface levels of PM_{2.5} and PM₁₀ particulate matter impact on COVID-19 in Milan, Italy. *Sci. Total Environ.* **738**, 139825. <https://doi.org/10.1016/j.scitotenv.2020.139825> (2020).
- Roy, S., Saha, M., Dhar, B., Pandit, S. & Nasrin, R. Geospatial analysis of COVID-19 lockdown effects on air quality in the South and Southeast Asian region. *Sci. Total Environ.* **756**, 144009. <https://doi.org/10.1016/j.scitotenv.2020.144009> (2021).
- Kanniah, K. D., Kamarul Zaman, N. A. F., Kaskaoutis, D. G. & Latif, M. T. COVID-19's impact on the atmospheric environment in the Southeast Asia region. *Sci. Total Environ.* **736**, 139658. <https://doi.org/10.1016/j.scitotenv.2020.139658> (2020).

29. Statistics, S. P. B. o. *Shandong Statistical Yearbook*, <http://tjj.shandong.gov.cn/tjnj/nj> 2020/zk/indexch.htm (2020).
30. Cheng, M. *et al.* Source apportionment of PM_{2.5} and visibility in Jinan, China. *J. Environ. Sci.* **102**, 207–215. <https://doi.org/10.1016/j.jes.2020.09.012> (2021).
31. Wang, G. *et al.* Variations in characteristics and transport pathways of PM_{2.5} during heavy pollution episodes in 2013–2019 in Jinan, a central city in the north China Plain. *Environ. Pollut.* **284**, 117450. <https://doi.org/10.1016/j.envpol.2021.117450> (2021).
32. Li, L. *et al.* Air quality changes during the COVID-19 lockdown over the Yangtze River Delta Region: An insight into the impact of human activity pattern changes on air pollution variation. *Sci. Total Environ.* **732**, 139282. <https://doi.org/10.1016/j.scitotenv.2020.139282> (2020).
33. Baldasano, J. M. COVID-19 lockdown effects on air quality by NO₂ in the cities of Barcelona and Madrid (Spain). *Sci. Total Environ.* **741**, 140353. <https://doi.org/10.1016/j.scitotenv.2020.140353> (2020).
34. Huang, G. & Sun, K. Non-negligible impacts of clean air regulations on the reduction of tropospheric NO₂ over East China during the COVID-19 pandemic observed by OMI and TROPOMI. *Sci. Total Environ.* **745**, 141023. <https://doi.org/10.1016/j.scitotenv.2020.141023> (2020).
35. Nhung, N. T. T. *et al.* Short-term association between ambient air pollution and pneumonia in children: A systematic review and meta-analysis of time-series and case-crossover studies. *Environ. Pollut.* **230**, 1000–1008. <https://doi.org/10.1016/j.envpol.2017.07.063> (2017).
36. Guo, X. R. *et al.* Estimation and prediction of pollutant emissions from agricultural and construction diesel machinery in the Beijing-Tianjin-Hebei (BTH) region, China. *Environ. Pollut.* **260**, 113973. <https://doi.org/10.1016/j.envpol.2020.113973> (2020).
37. Mor, S. *et al.* Impact of COVID-19 lockdown on air quality in Chandigarh, India: Understanding the emission sources during controlled anthropogenic activities. *Chemosphere* **263**, 127978. <https://doi.org/10.1016/j.chemosphere.2020.127978> (2021).
38. Chen, L. A., Chien, L. C., Li, Y. & Lin, G. Nonuniform impacts of COVID-19 lockdown on air quality over the United States. *Sci. Total Environ.* **745**, 141105. <https://doi.org/10.1016/j.scitotenv.2020.141105> (2020).
39. Ropkins, K. & Tate, J. E. Early observations on the impact of the COVID-19 lockdown on air quality trends across the UK. *Sci. Total Environ.* **754**, 142374. <https://doi.org/10.1016/j.scitotenv.2020.142374> (2021).
40. Sharma, S. *et al.* Effect of restricted emissions during COVID-19 on air quality in India. *Sci. Total Environ.* **728**, 138878. <https://doi.org/10.1016/j.scitotenv.2020.138878> (2020).
41. Sicard, P. *et al.* Amplified ozone pollution in cities during the COVID-19 lockdown. *Sci. Total Environ.* **735**, 139542. <https://doi.org/10.1016/j.scitotenv.2020.139542> (2020).
42. Li, K. *et al.* Anthropogenic drivers of 2013–2017 trends in summer surface ozone in China. *Proc. Natl. Acad. Sci.* **116**, 422–427 (2019).
43. Mahato, S., Pal, S. & Ghosh, K. G. Effect of lockdown amid COVID-19 pandemic on air quality of the megacity Delhi, India. *Sci. Total Environ.* **730**, 139086. <https://doi.org/10.1016/j.scitotenv.2020.139086> (2020).
44. Wang, Y. *et al.* Changes in air quality related to the control of coronavirus in China: Implications for traffic and industrial emissions. *Sci. Total Environ.* **731**, 139133. <https://doi.org/10.1016/j.scitotenv.2020.139133> (2020).
45. Copat, C., Cristaldi, A., Fiore, M., Grasso, A. & Ferrante, M. The role of air pollution (PM and NO₂) in COVID-19 spread and lethality: A systematic review. *Environ. Res.* **191**, 110129 (2020).
46. Co Mu Nian, S., Dongo, D., Milani, C. & Palestini, P. Air pollution and COVID-19: The role of particulate matter in the spread and increase of COVID-19's morbidity and mortality. *Int. J. Environ. Res. Public Health* **17**, 4487 (2020).
47. Mor, S. *et al.* Impact of COVID-19 lockdown on air quality in Chandigarh, India: Understanding the emission sources during controlled anthropogenic activities. *Chemosphere* **263**, 14. <https://doi.org/10.1016/j.chemosphere.2020.127978> (2021).
48. Nigam, R., Pandya, K., Luis, A. J., Sengupta, R. & Kotha, M. Positive effects of COVID-19 lockdown on air quality of industrial cities (Ankleshwar and Vapi) of Western India. *Sci. Rep.* **11**, 1–12 (2021).
49. Mkm, A., Gg, B. & Aw, C. The impact of COVID 19 on air pollution levels and other environmental indicators—A case study of Egypt—ScienceDirect. *J. Environ. Manag.* **277**, 111496 (2020).
50. Chowdhury, R. B. *et al.* Environmental externalities of the COVID-19 lockdown: Insights for sustainability planning in the Anthropocene. *Sci. Total Environ.* **783**, 147015. <https://doi.org/10.1016/j.scitotenv.2021.147015> (2021).
51. Rad, A. K., Shariati, M. & Zarei, M. The impact of COVID-19 on air pollution in Iran in the first and second waves with emphasis on the city of Tehran. *J. Air Pollut. Health* **5**, 181–192 (2021).
52. Lian, X. *et al.* Impact of city lockdown on the air quality of COVID-19-hit of Wuhan city. *Sci. Total Environ.* **742**, 140556. <https://doi.org/10.1016/j.scitotenv.2020.140556> (2020).
53. Sembhi, H. *et al.* Post-monsoon air quality degradation across Northern India: Assessing the impact of policy-related shifts in timing and amount of crop residue burnt. *Environ. Res. Lett.* **15**, 104067. <https://doi.org/10.1088/1748-9326/aba714> (2020).
54. Addas, A. & Maghrabi, A. The impact of COVID-19 lockdowns on air quality—A global review. *Sustainability* **13**, 10212. <https://doi.org/10.3390/su131810212> (2021).
55. Faridi, S. *et al.* The effect of COVID-19 pandemic on human mobility and ambient air quality around the world: A systematic review. *Urban Clim.* **38**, 100888. <https://doi.org/10.1016/j.uclim.2021.100888> (2021).

Acknowledgements

This work was supported by the Agricultural Science and Technology Fund for the Forestry Sci-tech Innovation Project of Shandong Province (No. LYCX07-2018-37).

Author contributions

K.L.: software, validation, formal analysis, investigation, writing-original draft, visualization. R.N.: data curation, writing-review and editing, methodology. T.J.: data curation, supervision. Y.T.: software, resources. X.Z.: resources. C.L.: conceptualization, writing-review and editing, methodology. C.X.: formal analysis, software.

Funding

Funding was provided by the Agricultural Science and Technology Fund of the Forestry Sci-tech Innovation Project of Shandong Province (no. LYCX07-2018-37).

Competing interests

The authors declare no competing interests.

Additional information

Correspondence and requests for materials should be addressed to C.L.

Reprints and permissions information is available at www.nature.com/reprints.

Publisher's note Springer Nature remains neutral with regard to jurisdictional claims in published maps and institutional affiliations.



Open Access This article is licensed under a Creative Commons Attribution 4.0 International License, which permits use, sharing, adaptation, distribution and reproduction in any medium or format, as long as you give appropriate credit to the original author(s) and the source, provide a link to the Creative Commons licence, and indicate if changes were made. The images or other third party material in this article are included in the article's Creative Commons licence, unless indicated otherwise in a credit line to the material. If material is not included in the article's Creative Commons licence and your intended use is not permitted by statutory regulation or exceeds the permitted use, you will need to obtain permission directly from the copyright holder. To view a copy of this licence, visit <http://creativecommons.org/licenses/by/4.0/>.

© The Author(s) 2022