

Neth Heart J (2019) 27:636  
<https://doi.org/10.1007/s12471-019-1283-9>

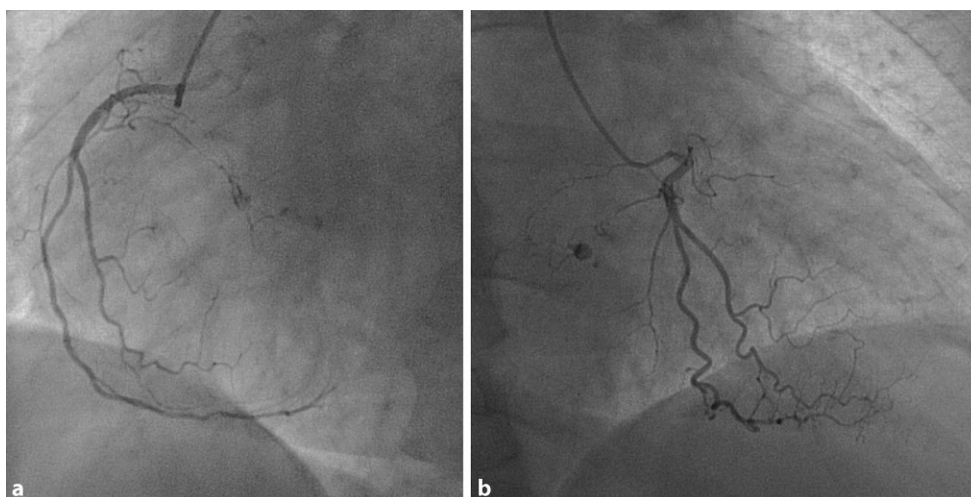


## Little devil takes your breath away

M. A. C. Koole · J. A. Winkelman · A. Kaya · M. A. Beijk

Published online: 10 May 2019  
© The Author(s) 2019

**Fig. 1** Coronary angiography of the right coronary artery. **a** Left anterior oblique view. **b** Right anterior oblique view



A 67-year-old female patient was referred with progressive dyspnoea on exertion. Coronary angiography was performed (Fig. 1a, b).

What is your diagnosis?

---

**Electronic supplementary material** The online version of this article (<https://doi.org/10.1007/s12471-019-1283-9>) contains supplementary material, which is available to authorized users.

---

M. A. C. Koole  
Department of Cardiology, Red Cross Hospital, Beverwijk,  
The Netherlands

J. A. Winkelman · A. Kaya  
Department of Cardiothoracic Surgery, Amsterdam UMC,  
University of Amsterdam, Amsterdam, The Netherlands

M. A. C. Koole · M. A. Beijk (✉)  
Department of Cardiology, Amsterdam UMC, University of  
Amsterdam, Amsterdam, The Netherlands  
[m.a.beijk@amc.uva.nl](mailto:m.a.beijk@amc.uva.nl)

### Answer

You will find the answer elsewhere in this issue.

**Conflict of interest** M.A.C. Koole, J.A. Winkelman, A. Kaya and M.A. Beijk declare that they have no competing interests.

**Open Access** This article is distributed under the terms of the Creative Commons Attribution 4.0 International License (<http://creativecommons.org/licenses/by/4.0/>), which permits unrestricted use, distribution, and reproduction in any medium, provided you give appropriate credit to the original author(s) and the source, provide a link to the Creative Commons license, and indicate if changes were made.

