




Cite this: *RSC Adv.*, 2019, 9, 8204

Catalytic ozonation process using a MgO nano-catalyst to degrade methotrexate from aqueous solutions and cytotoxicity studies in human lung epithelial cells (A549) after treatment

Abdolazim Alinejad,^{ab} Hamed Akbari,^a Mansour Ghaderpoori,^c Ali Khani Jeihooni^b and Amir Adibzadeh ^{*a}

Pharmaceutical compounds which enter the environment are classified as emerging pollutants. Among different drug compounds, anti-cancer drugs like methotrexate are of more concern due to their mutagenic, carcinogenic, and genotoxic properties. Therefore, the main objective of this study was to use catalytic ozonation processes (COPs) as novel advanced oxidation processes to degrade methotrexate from aqueous solutions. The calcination method was used to obtain a nitrate magnesium oxide nano-catalyst. The main variables considering the effect of single ozonation processes (SOPs) and COPs on the target pollutant were initial methotrexate concentration, contact time, solution pH, and MgO dosage. The BET results indicated that the surface area of the MgO nano-catalyst was 140.031 m² g⁻¹. Based on the BJH plot, the size of the MgO nano-catalyst and average pore volume were 44.5 nm and 0.4454 cm³ g⁻¹, respectively. The weight percent of Mg and O was 61.09% and 38.91%, respectively. In acidic and alkaline pH, the degradation rate of methotrexate showed a higher increase in SOPs and COPs than at neutral pH. The degradation rate of methotrexate decreased with increasing concentration. By increasing the contact time, the degradation rate of methotrexate of both SOPs and COPs increased. Actually, the methotrexate degradation in COPs was faster than in SOPs. When using *tert*-butanol as a scavenger, the reduced removal efficiency in SOPs and COPs was 32% and 31%, respectively.

Received 14th January 2019
Accepted 12th February 2019

DOI: 10.1039/c9ra00320g

rsc.li/rsc-advances

Introduction

Drug or pharmaceutical compounds which enter the environment are classified as emerging pollutants. Recently, various studies have been reported on the presence of these compounds in surface waters and ground waters.¹ Among different drug compounds, anti-cancer drugs are of more concern due to their mutagenic, carcinogenic, and genotoxic properties. Also, these compounds usually have low biodegradability.² Methotrexate is one of the most important drugs used in chemotherapeutic applications. Methotrexate is an analogue of folic acid and can inhibit the enzyme dihydrofolate reductase.^{2,3} It is used in chemotherapy at both high and low doses in the treatment of some autoimmune diseases, such as rheumatoid arthritis, adult psoriasis, or ectopic pregnancy.^{4,5} Findings showed that with intravenous administration, more than 85% of the injected

dose was excreted unchanged within 24 hours *via* the urine.^{6,7} As a result, it can enter municipal wastewater through hospital wastewater,⁸ and even concentrations of it in drinking water are detected.^{3,9} According to studies, methotrexate is partially eliminated by conventional wastewater treatment processes.^{4,10} These drug compounds, depending on their concentration, can have different effects on human health.³ So far, various processes have been investigated to remove or degrade drug compounds from effluents.^{11,12} Processes considered to remove methotrexate are UV-TiO₂,¹³ UV-H₂O₂/UV-Fe²⁺-H₂O₂/UV-TiO₂,¹⁴ sonolysis-ozonolysis,¹⁵ electro-synthesized ferrate(vi) ion,¹⁶ and single ozonation processes (SOPs).³ As several studies have shown, advanced oxidation processes (AOPs) are some of the most important processes for the removal or the degradation of pharmaceutical compounds from various types of wastewater.^{17–19} AOPs are suitable processes for treating compounds that are refractory to biodegradation treatment like antibiotics.^{11,20}

One of the most important innovations in AOPs is the use of a solid as a catalyst: catalytic ozonation processes (COPs). Actually, SOPs have a relatively low efficiency in the degradation of refractory organic pollutants. The most important problems

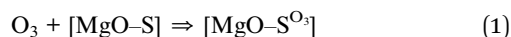
^aHealth Research Center, Lifestyle Institute, Baqiyatallah University of Medical Sciences, Tehran, Iran. E-mail: rsr.adibzadeh@bmsu.ac.ir; Fax: +98-2182482483

^bDepartment of Public Health, Fasa University of Medical Sciences, Fasa, Iran

^cNutrition Health Research Center, Lorestan University of Medical Sciences, Khorramabad, Iran



in SOPs are low solubility and low stability of O_3 in water and slow reaction with some organic compounds.²¹ In COPs, the presence of metal oxides can increase the production of active radicals to degrade refractory compounds (eqn (1)–(3)):²²



The use of COPs eliminates or mitigates the disadvantages of SOPs. The advantages of COPs are a simple operation, low cost, proper mineralization, environment-friendly, non-toxic, highly stable, easy to produce, and short time.²³ Due to high surface area and low recovery and production costs, metal oxides have a high potential for application in water and wastewater treatment.²⁴ COPs represent a new technology for the removal or the degradation of organic pollutants in water and wastewater and include two process types: homogeneous and heterogeneous. Heterogeneous COP has attracted a great deal of attention recently due to its high efficiency in the degradation and mineralization of organic pollutants with low adverse effects.²⁵ The heterogeneous COP is an attractive oxidation process which involves a solid catalyst in combination with O_3 that can improve the efficiency of O_3 in the breaking down of refractory organic compounds by radical reactions.²⁶ A review of the literature suggests that the use of magnesium oxide (MgO) as a catalyst is significantly associated with the ozonation process and has a useful effect on the degradation of pollutants that are refractory to biodegradation such as antibiotics.^{27,28} The catalyst is also widely used in conventional wastewater treatment, and for industrial and pharmaceutical sewages, dyes and phenolic materials. MgO, due to its adsorption properties, is also a promising substance as an adsorbent.²⁹ MgO is a material with a wide application range.²⁴ MgO is heterogeneous which means it has high catalytic potential for the degradation of refractory pollutants, such as drugs.^{23,28} The high-power degradation is one of the most important features of this catalyst.³⁰ MgO is a cheap catalyst with electromagnetic absorption characteristics at high wavelengths near those of visible light, and under sunlight in the range of 200 to 400 nm wavelength can be exhibit. MgO nano-catalysts exhibit their highest absorption in the wavelength range 385 nm to 360 nm.^{31,32} Metal oxides due to their high surface area and low recovery and production costs have a high potential for application in water and wastewater treatment. MgO, among the large family of metal oxides, is a widely used material.²⁴ MgO is considered as one of the metallic semiconductors which degrade refractory compounds such as drugs by ultraviolet radiation, although it is applied to a lesser extent than TiO_2 . MgO has a bonded cavity (2/3 eV) similar to TiO_2 .³¹ Based on a literature review, so far, for different pollutants like dyes, formaldehyde, catechol, and VOCs, heterogeneous COPs has been used, but no reports have yet been published of the removal or degradation of methotrexate. For this reason, MgO has been selected as

a solid catalyst for the removal or the degradation of methotrexate. Therefore, the main objective of this study was to use COPs as novel AOPs to degrade methotrexate from aqueous solutions.

Experimental

Chemicals

Chemicals needed in this research included methotrexate (purity > 99%), magnesium nitrate ($Mg(NO_3)_2$), sulfuric acid (H_2SO_4), sodium hydroxide (NaOH) and *tert*-butanol ($C_4H_{10}O$). All materials were obtained as high analytical grade from Merck and Sigma-Aldrich Chemicals Company.

Preparation of MgO nano-catalyst and experimental procedures and analytical methods

To prepare the magnesium oxide nano-catalyst (MgO), the procedure of Moussavi *et al.*³⁰ was used. In this procedure, the calcination method was used to obtain nitrate magnesium oxide nano-catalyst. In this way, MgO was obtained from natural mineral magnesite from Iran. Initially, magnesium ore became fine particles by crushing. After the initial crushing, the crushed particles were washed with distilled water and then dried. To eliminate impurities in the crushed particles, they were placed in an acid solution for 5 h. After soaking in acid solution, the crushed particles were dried at 100 °C for 24 h. Then, the dried crushed particles were calcined at 700 °C for 2 h in a furnace. Ultimately, the prepared MgO nano-catalyst was manually powdered. After preparation, the final product for next use was placed in a polyethylene container. The detailed characterizations of the MgO were conducted with field emission scanning electron microscopy (SEM; Sigma model VP-500, Zeiss), Fourier transform infrared (FTIR) spectroscopy (Spectrum Two model, PerkinElmer), X-ray diffraction (XRD; X'pert Pro model, Panalytical), and energy dispersive X-ray spectroscopy (EDX). Brunauer–Emmett–Teller (BET; Belsorp Mini model, Microtrac Bel Corp.) surface area and total pore volumes of the nano-catalyst were determined *via* nitrogen adsorption isotherms at 77 K. All the experiments with the methotrexate drug were performed after catalyst confirmation. The methotrexate structural formula and its

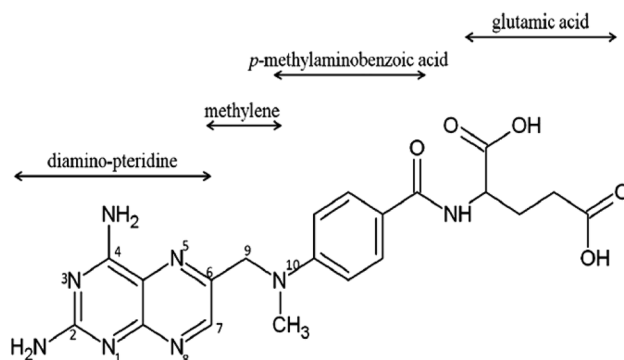


Fig. 1 The methotrexate (crystalline powder and orange-brown) structural formula and its properties.¹⁶

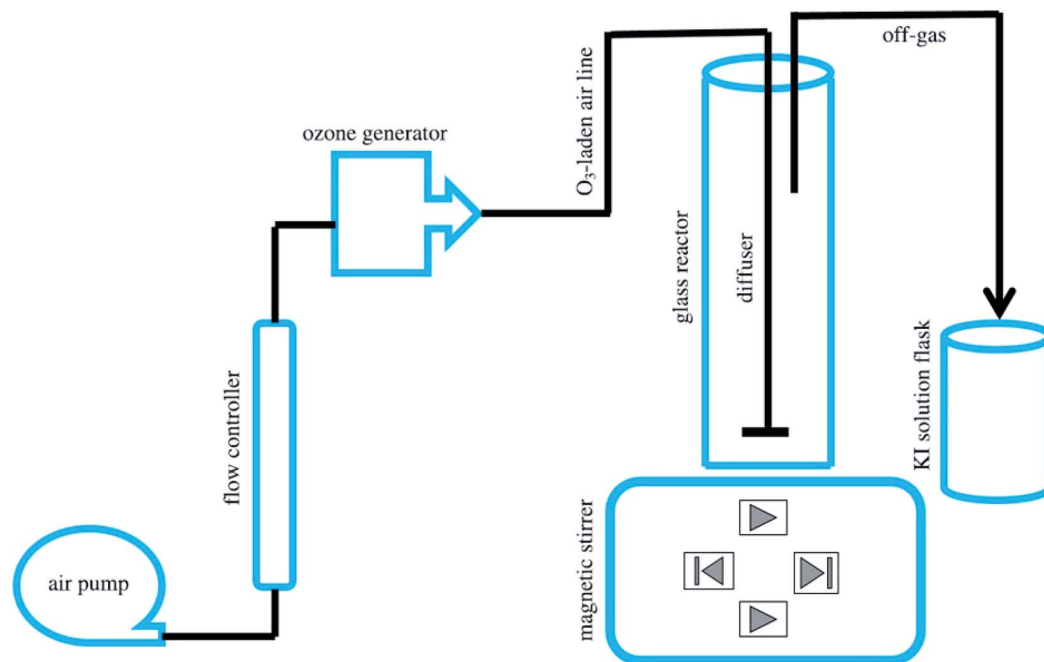


Fig. 2 A view of the pilot used.

properties are shown in Fig. 1. Its molecular formula is $C_{20}H_{22}N_8O_5$ and its molecular weight is $454.447 \text{ g mol}^{-1}$. Also, its solubility in water is 2600 mg l^{-1} . All experiments were carried out in batch conditions. Fig. 2 shows a view of the pilot used. The pilot used and its components were similar to those of the Moussavi *et al.* study.²⁸ Main parts of the pilot used included an (A) air pump, (B) ozone generator and (C) supply system, a flow controller, an ozonation reactor, glass reactor, magnet, diffuser, catalyst particles, ozone bubbler, magnetic stirrer, a destruction system of off-gas O_3 , and solution flask of potassium iodide (KI). Ozone is formed by an ozonator and it can be passed through the glass diffuser to the reactor. The reactions of SOPs and COPs were performed in a 250 ml Pyrex glass reactor. To create fine bubbles, a magnetic stirrer was used. A stock solution of methotrexate (500 mg l^{-1}) was prepared weekly in high-quality distilled water and stored at standard temperature ($4 \text{ }^\circ\text{C}$). The main variables considered for the effect of SOPs and COPs on target pollutant were initial methotrexate concentration (5 to 30 mg l^{-1}), contact time (5 to 60 min), solution pH (4 to 10), and MgO dosage (0.1 to 0.5 g l^{-1}). Also, the methotrexate mineralization was determined using TOC (total organic carbon).³³ To determine the methotrexate concentration, high-performance liquid chromatography (HPLC) was used. An HPLC system (Shimadzu Corp., Kyoto, Japan) consisting of a quaternary pump (LC-10ATvp), UV-visible detector (SPD-M10Avp), vacuum degasser and system controller (SCL-10Avp) was used. A manual injector with a $10 \text{ } \mu\text{l}$ sample loop was used for loading the sample. A Class VP-LC workstation was used to acquire and process chromatographic data. An RP cyano analytical column ($150 \times 4.6 \text{ mm}$, $5 \text{ } \mu\text{m}$; MZ-Analysentechnik GmbH, Germany) was used. Also, the influence of a scavenger on the performance of

COPs in methotrexate oxidation was studied. *tert*-Butanol (0.5 g l^{-1}) was used as the scavenger. To study the mechanism dominating the interaction of COPs with MgO in methotrexate oxidation, the *tert*-butanol method was used.²⁸

Cell cultures

In the present work, the effect of MTX, SOP (O_3) and COP (MgO + O_3) extracts on the A549 cell line was investigated by MTT assay. Cell cultures were conducted with A549 cells derived from type II like human lung epithelial carcinoma in sterile plastic flasks. In this study, the A549 cells were purchased from the National Center for Cell Bank Science, Pasteur Institute of Iran (Tehran) (NCBI Code: C137). The flasks were maintained in low-glucose medium (DMEM) that contained 10 mg ml^{-1} of 1% penicillin/streptomycin, 10% fetal calf serum, and 200 mM of 2% L-glutamine. Then, they were exposed to 5% atmospheric carbon dioxide at $37 \text{ }^\circ\text{C}$. After maintaining the A549 cell cultures (1×10^4 cells per ml) in plates for 24 h, they were treated with MTX, SOP, and COP extracts at a concentration of $150 \text{ } \mu\text{l}$ for 12 h, 24 h, or 36 h. Fig. 10 shows contrast-phase microscopy images of A549 cells exposed to extracts.³⁴

Cytotoxicity assay by MTT method

The MTT (3-(4,5-dimethylthiazol-2-yl)-2,5-diphenyl tetrazolium) assay was performed to determine the number of viable cells present. The A549 cell line was cultured in a 96-well plate, and then MTT was added to each well and incubated for 4 h. After removing the supernatant, the dark blue formazan crystals were dissolved in DMSO. The absorbance of the suspension was measured at 570 nm . The measured values were reported as

a percentage of the control.³⁵ The toxicity and viability were calculated using eqn (4) and (5), respectively:

$$\text{Toxicity}\% = \left(1 - \frac{\text{mean OD of sample}}{\text{mean OD of control}}\right) \times 100 \quad (4)$$

$$\text{Viability}\% = 100 - \text{toxicity}\% \quad (5)$$

Results and discussion

MgO characterization

Different experiments were performed to determine the characteristics of the synthesized MgO. The SEM image of the MgO nano-catalyst is shown in Fig. 3A. The XRD pattern of the synthesized MgO is presented in Fig. 3B and indicates the crystalline particles of MgO in the powder. The results of the synthesis of MgO nano-crystals are consistent with the results of other researchers.^{22,36} BET test results are presented in Table 1. The BET results indicated the surface area of MgO nano-catalyst was $140 \text{ m}^2 \text{ g}^{-1}$. Based on the BJH plot, the size of MgO nano-catalyst particles was 44.5 nm. The Debye–Scherrer equation was also used to estimate the size of MgO nano-crystals more accurately.²³ Based on this equation, a size of MgO nano-crystals of 42.5 nm was obtained. In the Moussavi *et al.* study, the size of the synthesized MgO was in the range of 38 nm to 44 nm, with an average specific surface area of $153.7 \text{ m}^2 \text{ g}^{-1}$.³⁷ In the Kermani *et al.* study, the size of the synthesized MgO was 43 nm, with an average specific surface area of $137 \text{ m}^2 \text{ g}^{-1}$.³⁸ Also, an average pore volume of MgO, based on BET, was $0.4454 \text{ cm}^3 \text{ g}^{-1}$. The constituent elements of synthesized MgO were determined with EDX analysis, as shown in Fig. 4. The weight percent of Mg and O was 61.09% and 38.91%, respectively. As seen in Fig. 4, the prepared nano-catalyst was composed mainly of MgO. Fig. 5 shows the FTIR spectrum ($4000\text{--}400 \text{ cm}^{-1}$) of the MgO nano-catalyst. In this spectrum, several different peaks are seen. The 3700 cm^{-1} band was associated with the O–H bonds and phenolic functional groups.³⁹ The bands at 2000 cm^{-1} to 2500 cm^{-1} were related to CO_2 from the atmosphere. Also, the range between

Table 1 Some properties of MgO from adsorption–desorption experiments (based on N_2) at 77 K

Sample	SA_{BET} ($\text{m}^2 \text{ g}^{-1}$)	Total pore volume ($\text{m}^3 \text{ g}^{-1}$)	Mean pore diameter (nm)
MgO	140	0.3124	44.5

1000 and 1500 cm^{-1} shows bands due to the MgO framework.^{11,28,39}

Influence of pH on the process

The solution pH is an influential parameter in the degradation of organic matter during SOPs and COPs. Actually, due to the amphoteric behavior of most semiconductor oxides, the solution pH is one of the important parameters in these reactions.⁴⁰ The solution pH affects the state of degradation materials, O_3 decomposition, and the properties of the surface catalyst.^{41,42} To better consider the effect of solution pH on the degradation of methotrexate using a metal catalyst, its effect on SOPs and COPs was investigated. The removal efficiency of methotrexate by the combined process was considered in the pH range of 4 to 10. The results of the effect of solution pH on the degradation of methotrexate are shown in Fig. 6. As shown in Fig. 6, the solution pH plays an important role in the photo-catalytic reactions. In acidic and alkaline pH, the degradation of methotrexate showed a higher increase in the SOPs and COPs than neutral pH. The degradation of methotrexate from the solution increased for a pH of 7 and reached a maximum of 87% at a pH near 8, which is 23% higher than that at a pH of 4. When pH increases to alkaline pH, the degradation rate of O_3 accelerates, resulting in the production of more reactive radicals.^{22,38} The main reason for increasing the degradation rate of methotrexate in acidic pH can be attributed to the very slow O_3 degradation in such conditions and O_3 is the main radical of the reaction with the pollutants which reacts selectively. In COPs with MgO nano-crystals, the degradation of methotrexate increases with increasing pH. The main reason is that O_3 acts as an electrophile agent and can attack the centers of high electron density of methotrexate. As mentioned earlier, at pH higher than pK_a , it

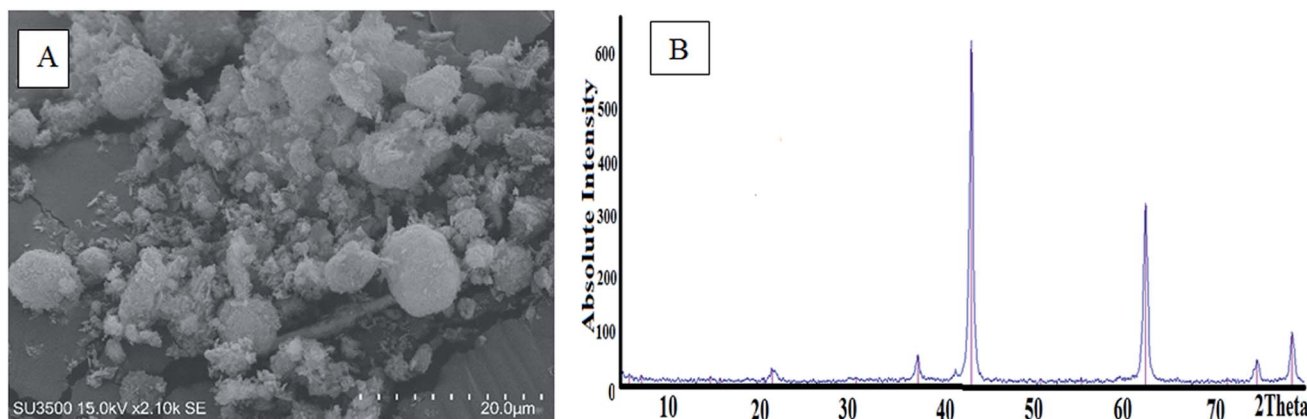


Fig. 3 SEM image (A) and XRD pattern (B) of the synthesized MgO nano-catalyst.

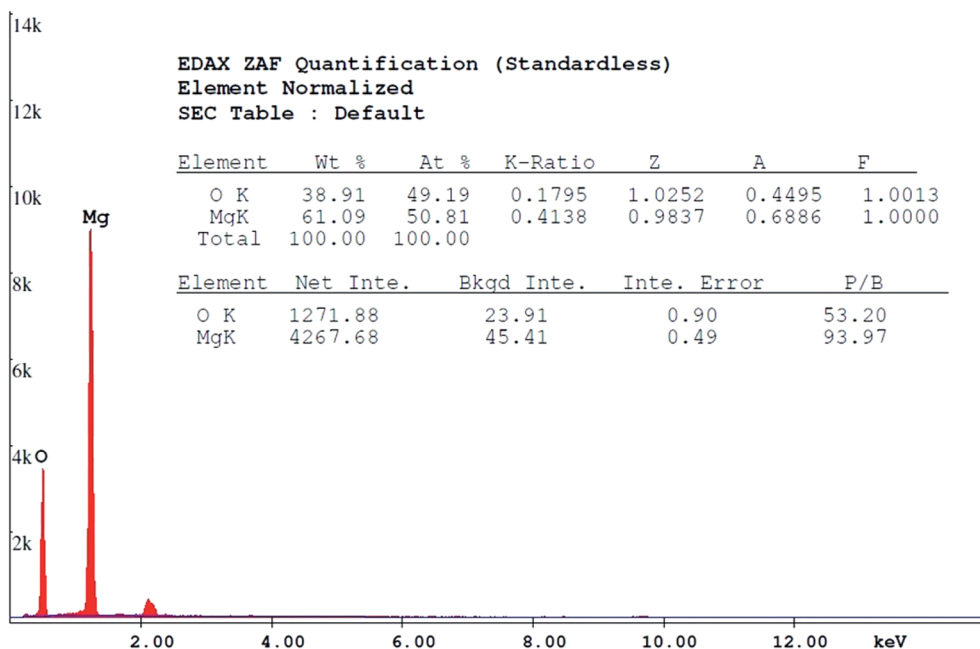


Fig. 4 EDX spectrum of the synthesized MgO nano-catalyst.

contaminates the anionic material, and thus the O_3 reacts with it.⁴³ The pH of zero point of charge (pH_{zpc}) for MgO was obtained as nearly 10.5. Based on pH_{zpc} , the surface charges on MgO at pH higher and lower than pH_{zpc} are negative and positive, respectively. Another reason for the increasing degradation rate of methotrexate in alkaline pH in COPs is the increase in the production of $\cdot OH$ radicals in comparison with SOPs. Also, in fact, increasing the solution pH increases both the transfer of O_3 gas and its degradation rate in COPs. For the study and determination of the COPs mechanism, determining the pH_{zpc} is very important. The role of pH_{zpc} in the performance of metal catalysts is in three ways: (1) if the solution pH is less than pH_{zpc} , the surface charge of the catalyst is positive, (2) if the solution pH is more than pH_{zpc} , the surface charge of the catalyst is negative, and (3) if the solution pH is equal pH_{zpc} , the surface charge of the catalyst is neutral.⁴⁴ In this study, the best pH for the degradation of methotrexate was found to be

near 8. The findings of this study showed that the degradation rate of methotrexate was higher in alkaline conditions. In alkaline pH, the concentration of $\cdot OH$, which has a better oxidation power than O_3 , increased. So, it is expected that in alkaline conditions, due to the dominance of indirect oxidation, the degradation rate of methotrexate is higher than that in acidic conditions (direct oxidation). In fact, increasing the solution pH will increase the transfer of O_3 gas and its degradation rate in the heterogeneous COPs. These reactions lead to the formation of highly reactive $\cdot OH$ radicals and other radicals such as OH , HO_2 , and HO_3 which ultimately lead to an increase in the degradation rate of the pollutants.⁴⁵

Influence of initial methotrexate concentration, and catalyst dosage

Of other variables that affect the degradation of methotrexate is its initial concentration. Actually, methotrexate is found in

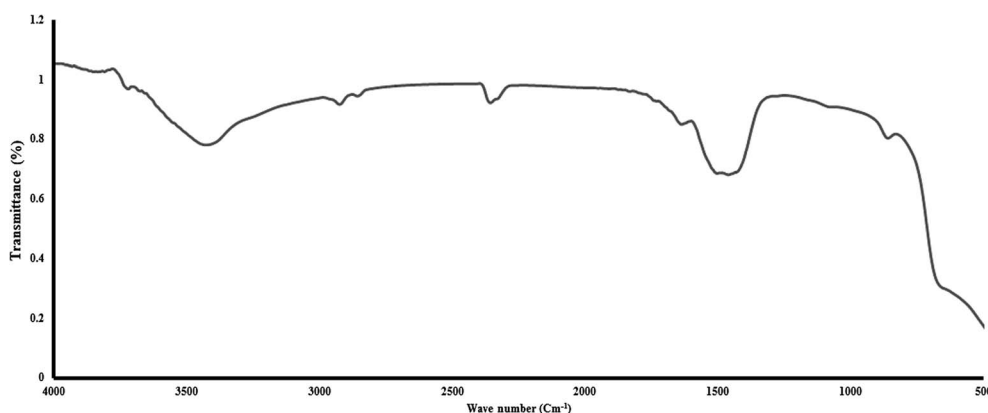


Fig. 5 FTIR spectrum of the synthesized MgO nano-catalyst.

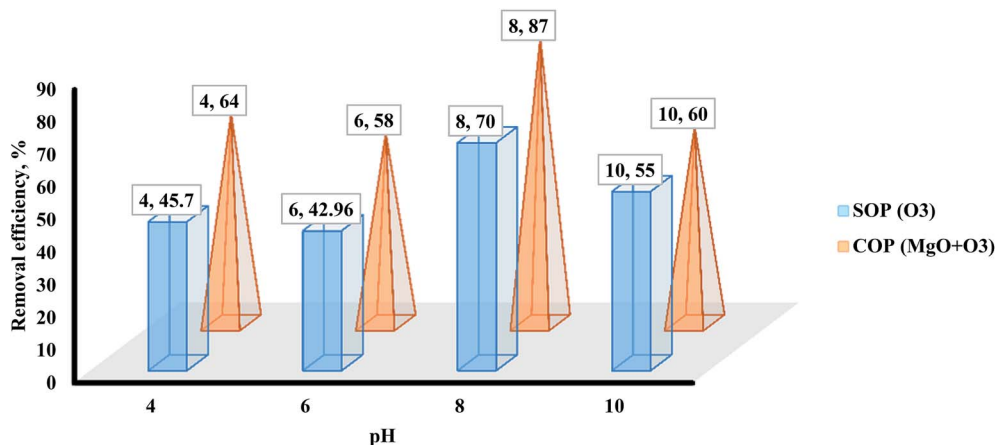


Fig. 6 The effect of the solution pH on methotrexate degradation by SOPs and COPs.

different concentrations in various wastewaters. Pharmaceutical wastewaters often have different concentrations of drugs. Therefore, different concentrations of methotrexate were investigated. The initial concentration of methotrexate was considered in the range of 5–30 mg l⁻¹. The effect of the initial concentration of target pollutant on the methotrexate degradation by SOPs and COPs is shown in Fig. 7. Based on Fig. 7, the degradation rate of methotrexate decreased with increasing concentration (from 5 to 30 mg l⁻¹). By increasing the concentration, the methotrexate molecules increase in the environment, but because of the low ·OH radical production from O₃ depletion, its degradation occurred more slowly at higher concentrations. As can be seen from Fig. 7, the degradation rate of methotrexate decreased with increasing concentration. The reduction in the degradation rate of methotrexate due to an increase in concentration can be attributed to the competition of the reaction with ·OH radicals at higher concentrations.⁴⁶ By increasing the initial concentration, the removal efficiency decreases and there is an inverse correlation between the methotrexate concentration and the degradation rate. At higher

concentrations, available sites for methotrexate adsorption are reduced which ultimately leads to a reduction in the degradation rate. Also, active sites on MgO are occupied by methotrexate molecules with a negative charge. One of the main reasons for the reduction in the degradation rate of methotrexate is the production of intermediates which are formed during the degradation. These intermediates can occupy active sites on the catalyst and, finally, reduce the reaction sites for methotrexate.²⁵ One of the other variables that affect the degradation rate of methotrexate is the required catalyst (MgO₃) dosage. Actually, one of the main parameters in the continuation of the COPs is determining the required catalyst content. According to a review, catalyst dosage can increase surface area and active sites for more O₃ degradation. Also, the characterization of the catalyst will play a vital role in COPs.⁴⁷ To determine the optimal dose of MgO, the COP was performed with different concentrations of nano-crystal (0.1–0.5 g l⁻¹). At first, by increasing the MgO dose, the degradation rate of methotrexate in the COP increased. In these conditions, the main reason for the increased degradation of methotrexate can be

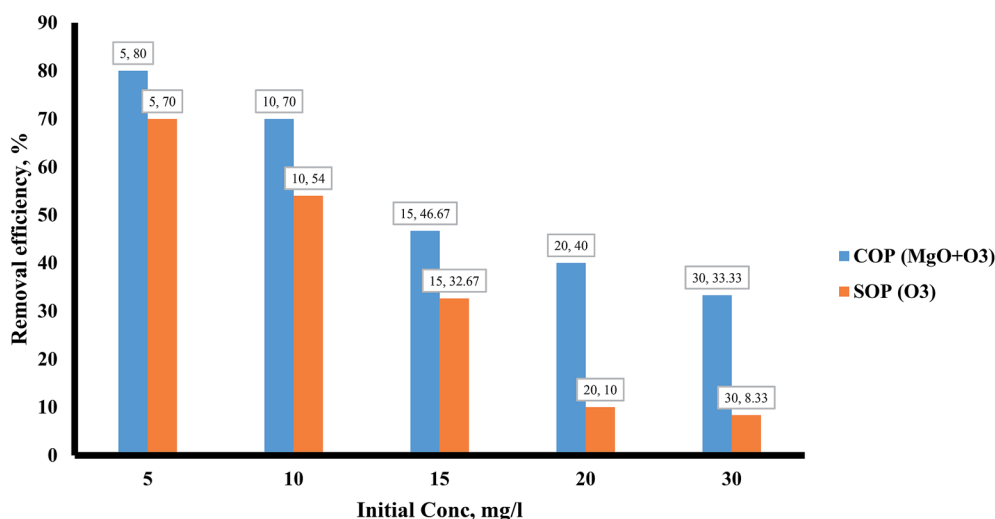
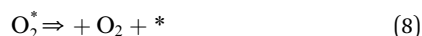
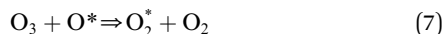


Fig. 7 The effect of initial concentration on methotrexate degradation by SOPs and COPs.

attributed to the increasing active sites and levels on the surface of the catalyst for more O_3 and drug. The maximum removal efficiency was observed at MgO dose of 0.4 g l^{-1} . Further increases in MgO dosage do not have a significant effect on the degradation of methotrexate. The optimal dose of MgO nano-crystal has been reported by Kermani *et al.*, in the removal of metronidazole with COPs, and by Moussavi *et al.*, in the removal of the reactive red 198 azo dye with COPs, with values of 0.25 g l^{-1} and 5 g l^{-1} , respectively.^{22,38} Also, the results of these studies showed that at higher doses than optimal, the amount of removal of the target pollutants is reduced. Depending on the type of pollutant, the optimum dose can also be different. The reaction mechanism of the degradation of O_3 on metal oxides has been reported as follows:⁴⁸



There are various reports that the use of metal oxides as a catalyst can enhance the efficiency of SOPs for the degradation of environmental pollutants.^{49,50} In the application of any type of catalyst in the degradation of pollutants, the adsorption process will be unavoidable. Catalytic adsorption capacity is one of the important factors that can affect the efficiency of COPs. For this, the adsorption capacity of MgO nano-crystal was considered. The results showed that the adsorption of methotrexate on MgO was very low and can be ignored. The findings of Kermani *et al.* on the removal of metronidazole by COPs in the presence of MgO nanoparticles showed that the adsorption rate of the drug was less than 1%.³⁸ By increasing the contact time, the degradation rate of methotrexate in both SOPs and COPs was increased. Actually, the methotrexate degradation in COPs was faster than in SOPs. It was also observed that in a shorter time, the degradation of methotrexate in COPs was much higher than that in SOPs. These results can be attributed to the synergistic properties of COPs. In previous studies, such synergistic properties have also been observed.^{11,51,52} The

reactions which occurred in the presence of a catalyst and lead to the synergistic properties of COPs can be expressed as follows: as the catalyst dose increases, the available surface area and active sites increase, so more O_3 will be adsorbed in places. The net result of these interactions would be to increase the production of $\cdot OH$ radicals and surface reactions.^{11,51}

Influence of scavenger and mineralization on the degradation of methotrexate

One of the important problems with SOPs and COPs is the negative effects of interfering factors through radical consumption and the consequent reduction of the removal efficiency of these processes. The presence of a scavenger in SOPs and COPs prevents proper formation of $\cdot OH$ radicals. In the absence of a scavenger and in usual conditions, O_3 molecules can adsorb on the surface of metal oxide (MgO) and react with $\cdot OH$ on the catalyst surface. In the presence of a scavenger, because of interfering agents on the catalyst surface, O_3 molecules cannot react with $\cdot OH$ surface groups. Subsequent reactions, as a result, for the production of active radicals will be disrupted and the degradation rate of the pollutants will be reduced.^{47,53} Fig. 8 shows the effect of *tert*-butanol on the degradation of methotrexate in SOPs and COPs. The study findings showed that the use of *tert*-butanol as a scavenger reduced the degradation rate of methotrexate. Reduced removal efficiency in SOPs (single O_3) and COPs ($O_3 + MgO$) was 32% and 31%, respectively. Based on the findings of this study, it can be said that the main mechanism involved in the degradation of methotrexate is an indirect reaction with $\cdot OH$ radicals. Reduction of drug degradation rate when adding *tert*-butanol confirms the predominance of the indirect oxidation system in the process. Other researchers have reported similar results.^{47,52} *tert*-Butanol, as a powerful scavenger, with the formation of a stronger bond with functional groups on the MgO surface, prevents the proper performance of the oxidation.⁵⁴ In aquatic environments, the degradation rate of O_3 molecules because of the presence of $\cdot OH$ scavengers can considerably decrease. *tert*-Butanol is an alcohol and can function in AOPs as a scavenger; therefore, it can greatly reduce the degradation rate of methotrexate molecules. This phenomenon can be justified in that the

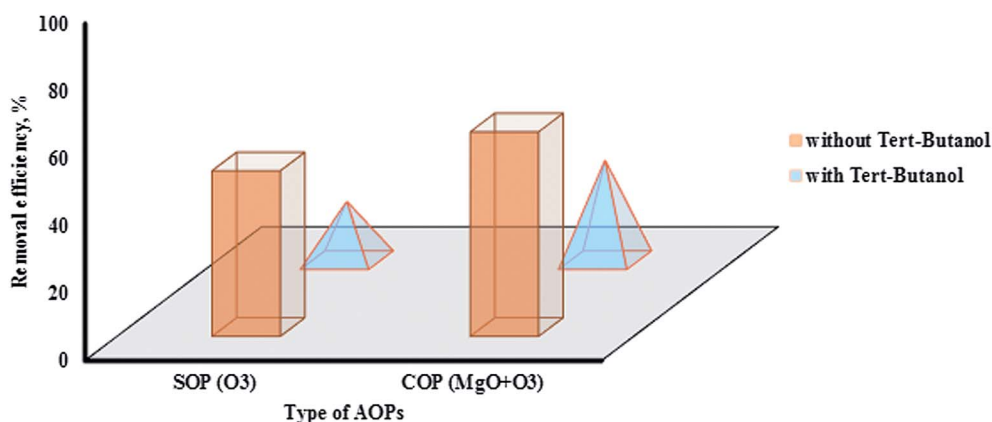


Fig. 8 The effect of *tert*-butanol on degradation and mineralization of methotrexate in SOPs and COPs.

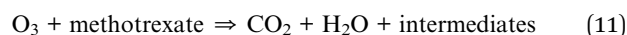
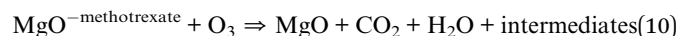
reaction rate between O_3 and *tert*-butanol is higher than that between O_3 and methotrexate molecules. It ultimately leads to a reduction in production of $\cdot OH$ radicals. The reaction rate of O_3 and *tert*-butanol and of O_3 and methotrexate molecules (as a pollutant) is 5×10^8 mol per second and 0.3 mol per second, respectively. While for SOPs in the presence of oxidant agents, reduction of the effectiveness of the process will be negligible.^{52,55} So, it can be concluded that degradation reactions of methotrexate occurred more at the MgO surface. TOC measurement for the degradation of methotrexate indicates mineralization of the target pollutant in SOPs and COPs. Fig. 9 shows the effect of mineralization of methotrexate in SOP and COP based on TOC. Highest mineralization in the degradation of methotrexate was related to COP ($O_3 + MgO$). The mineralization in SOP and COP was 20% and 45%, respectively. Therefore, COPs in comparison with SOPs can have high power in the mineralization of environmental pollutants.

Effect of reaction time and kinetics of methotrexate degradation in catalyst ozonation processes

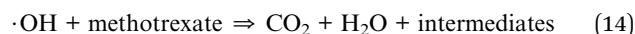
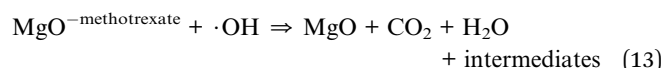
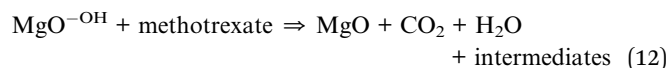
The results of kinetics of reactions showed that the reaction rate of SOPs increased from 0.0345 min^{-1} to 0.0965 min^{-1} for COPs. It can be concluded that the addition of MgO nanocrystals increased the degradation rate of methotrexate in COPs by about 2.79 times compared to SOPs. Based on the ozonation theory and the results of this study, in the COP of methotrexate in the presence of MgO nanocrystals, molecules of O_3 and methotrexate were adsorbed in the MgO surface and then the pollutant was oxidized using O_3 . Adsorption by the MgO nanocrystals increased the probability of reaction between O_3 molecules and methotrexate; as a result, the degradation rate of methotrexate increased. In addition to the direct reactions of methotrexate with O_3 molecules, the indirect reactions of the radicals produced at the MgO surface and in the solution can also be involved in the mechanism of methotrexate degradation. The degradation of pollutants in the ozonation process consists of two main paths: direct (using O_3 molecules) and indirect (using other radicals generated by O_3) oxidation. The

indirect oxidation system has high efficiency due to the presence of $\cdot OH$ radicals and high oxidation of these radicals compared to O_3 molecules.³⁸ According to the findings of Moussavi *et al.*²⁷ and Kermani *et al.*,³⁷ the three suggested pathways are as follows (direct and indirect reactions):

Direct reactions:



Indirect reactions:



$\cdot OH$ radicals react with organic matter in the ozonation process due to their reactivity and oxidation potential. For determining the best kinetic model of the degradation of methotrexate, first-order reaction (FOR) and second-order reaction (SOR) were examined. Kinetic constants for degradation and mineralization of methotrexate in SOPs and COPs are shown in Table 2. Based on Table 2, the best kinetic model describing the data obtained in SOPs and COPs was FOR. The model of FOR had the highest coefficient of determination (R^2 or R -square).

Cytotoxicity analysis

In this study, the effect of MTX, SOP, and COP extracts after treatment on the cell viability of A549 cells determined by MTT assay for a concentration of 150 μl with different contact times

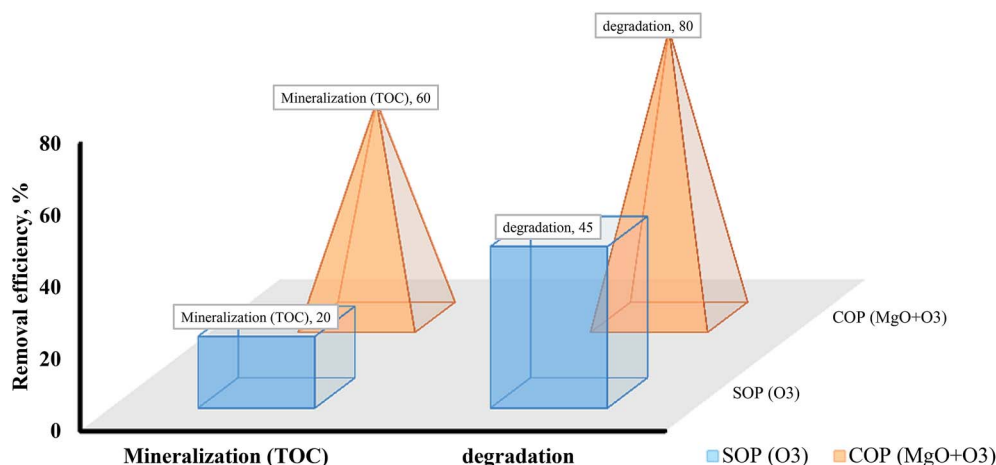


Fig. 9 The effect of mineralization of methotrexate in SOPs and COPs based on TOC.

Table 2 Kinetic constants for degradation and mineralization of methotrexate in catalyst ozonation processes

Type of process	First-order reaction	Second-order reaction
SOP (O ₃)	0.87	0.76
COP (MgO + O ₃)	0.95	0.85

of 12, 24, or 36 h was investigated. The results are shown in Fig. 10 and 11. The cytotoxicity results are presented as the percentage decrease in viable cells with respect to negative controls. A wide range of cytotoxicity values was obtained for the three extracts (MTX, SOP, and COP) ranging from 8% to 92% for 12 h, 24 h, or 36 h. As shown in Fig. 11, all three types of extract (MTX, SOP, and COP) inhibit cell proliferation and decrease cell viability. In accordance with other studies, the cell viability for MTX extract for the different contact times significantly decreased in comparison with the control cells ($P_{\text{value}} < 0.05$). Generally, the greatest survival percentage of

cells in each of the three types of extract was observed for the COP extract at an incubation time of 12 h (92%), whereas the lowest was observed for the MTX extract at an incubation time of 48 h (25.6%). Statistical analysis revealed a significant difference between the MTX extract and SOP and COP samples in terms of the percentage of viable cells when in contact with A549 cell line. The findings indicated that the cytotoxicity effect strengthens with an increase of the drug concentration and contact time.¹⁴ MTX is found to be more toxic with a viability of 25.6% and 8% for 12 h and 36 h of incubation, respectively. More toxicity, in this case, is due to the free existence and direct contact of the drug with the cells. Cytotoxicity assay done on A549 cell line revealed that the COP extract exhibited an average of 53% and 44% of cell death for 24 h and 36 h of incubation, respectively. MTX belongs to a group of drugs with high-risk side effects. It is a mutagen and a teratogen anticancer drug which belongs to the subgroup of the antimetabolites and acts by blocking enzyme activity and disrupting DNA synthesis.⁵⁶ In an *in vitro* study on A549 cell line culture, the cytotoxicity of MTX extract and SOP and COP

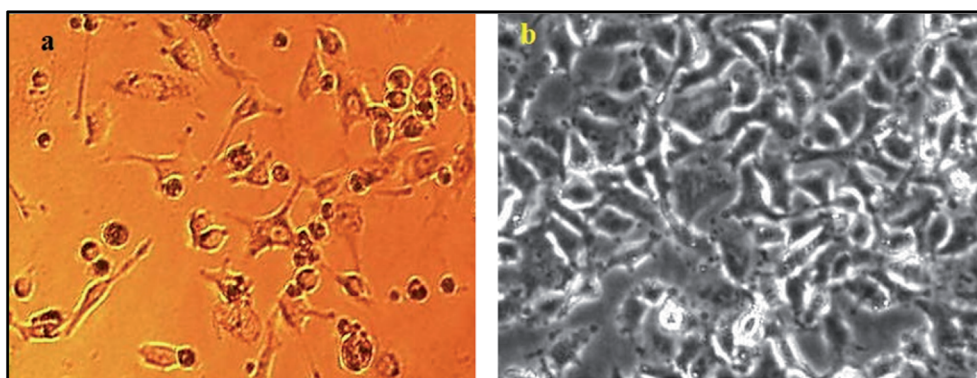


Fig. 10 Contrast phase microscopy observations of extract-exposed A549 cells. (a) Non-exposed cells. (b) A549 cells treated with MTX, SOP (O₃) and COP (MgO + O₃) extracts.

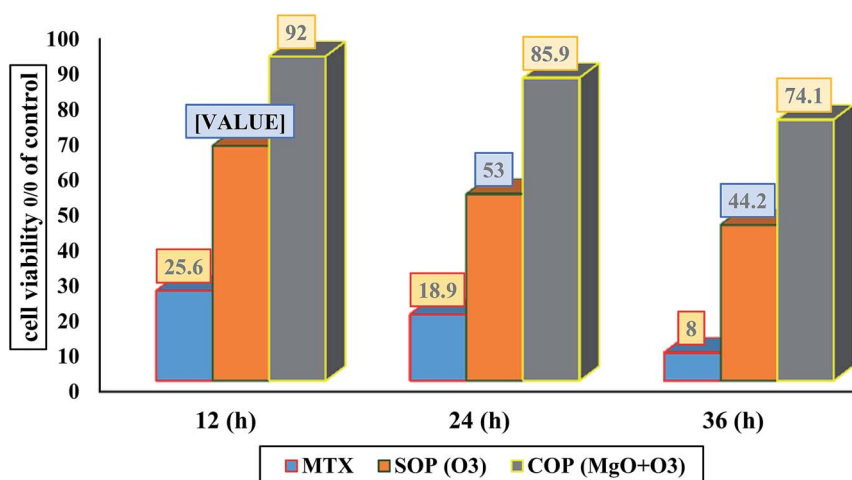


Fig. 11 Effect of exposure to MTX, SOP (O₃) and COP (MgO + O₃) extracts on cell viability of A549 cells by MTT assay for a concentration of 150 µl with different contact times of 12, 24, or 36 h.

samples was investigated. The effect of these extracts and their combination on viability (MTT test) and apoptosis of the cells was assessed.

Conclusions

The present study considered the effects of SOPs and COPs on the removal and the degradation of methotrexate from aqueous solutions. The main variables considered were initial methotrexate concentration, contact time, solution pH, and MgO dosage. All the experiments with the methotrexate drug were performed after catalyst confirmation. The results of the variation of pH showed that with increasing solution pH, the degradation of methotrexate increased. As the results show, at all pH values investigated, COP has a better performance than SOP, and, as pH rises, the removal of methotrexate increased. The degradation rate of methotrexate decreased with increasing concentration. At higher concentrations, available sites for methotrexate adsorption are reduced which ultimately leads to a reduction in the degradation rate. Also, active sites on MgO are occupied by methotrexate molecules with a negative charge. By increasing the MgO dose, the degradation rate of methotrexate by COPs increased. In these conditions, the main reason for the increased degradation of methotrexate can be attributed to an increase in active sites and levels on the surface of the catalyst for more O₃ and drug. It can be concluded that the addition of MgO nanocrystals increased the degradation rate of methotrexate in COPs by about 2.79 times compared to SOPs. In addition to the direct reactions of methotrexate with O₃ molecules, the indirect reactions of the radicals produced at the MgO surface and in solution can also be involved in the mechanism of methotrexate degradation. High mineralization with this method can greatly reduce the environmental risks associated with the discharge of effluents containing methotrexate. In accordance with other studies, the cell viability on exposure to MTX extract for different contact times significantly decreased in comparison with the control cells ($P_{\text{value}} < 0.05$). The results of this study showed that the COP using MgO nanocrystals can be used as a pretreatment or a complete treatment for pharmaceutical wastewater or aqueous solutions containing methotrexate.

Conflicts of interest

There are no conflicts to declare.

Acknowledgements

The authors of this article acknowledge the Baqiyatallah University of Medical Sciences for providing instrumental support for this project.

References

- 1 B. Roig, B. Marquet, I. Delpla, V. Bessonneau, A. Sellier, C. Leder, O. Thomas, R. Bolek and K. Kummerer, *Water Res.*, 2014, **57**, 67–75.
- 2 I. J. Buerge, H. Buser, T. Poiger and M. D. Müller, *Environ. Sci. Technol.*, 2006, **40**, 7242–7250.
- 3 A. C. Garcia, A. Broséus, R. Vincent, S. Barbeau, B. Prévost and M. Sauvé, *Chemosphere*, 2010, **79**, 1056–1063.
- 4 G. Aherne, *Int. J. Environ. Anal. Chem.*, 1985, **21**, 79–88.
- 5 C. Catastini, J. Mullot, S. Boukari, P. Mazellier, Y. Levi, P. Cervantes and J. Ormsby, *Eur. J. Water Qual.*, 2008, **39**, 171–180.
- 6 S. Castiglioni, R. Bagnati, D. Calamari, R. Fanelli and E. Zuccato, *J. Chromatogr. A*, 2005, **1092**, 206–215.
- 7 S. Castiglioni, R. Bagnati, R. Fanelli, F. Pomati, D. Calamari and E. Zuccato, *Environ. Sci. Technol.*, 2006, **40**, 357–363.
- 8 J. Yin, B. Shao, J. Zhang and K. Li, *Bull. Environ. Contam. Toxicol.*, 2010, **84**, 39.
- 9 G. Aherne, J. English and V. Marks, *Ecotoxicol. Environ. Saf.*, 1985, **9**, 79–83.
- 10 V. Matamoros, M. Hijosa and J. M. Bayona, *Chemosphere*, 2009, **75**, 200–205.
- 11 A. Abdoli, R. Shokuhi, M. A. Seid and G. Asgari, *Journal of Sabzevar University of Medical Sciences*, 2016, **21**(1), 84–94.
- 12 Y. Lin, S. Wu, X. Li, X. Wu, C. Yang, G. Zeng, Y. Peng, Q. Zhou and L. Lu, *Appl. Catal., B*, 2018, **227**, 557–570.
- 13 W. Lai, M. Hsu and A. Lin, *Water Res.*, 2017, **112**, 157–166.
- 14 C. A. Lutterbeck, E. Baginska, E. Machado and K. Kümmerer, *Chemosphere*, 2015, **141**, 290–296.
- 15 C. A. Somensi, E. L. Simionatto, J. B. Dalmarco, P. Gaspareto and C. M. Radetski, *J. Environ. Sci. Health, Part A: Environ. Sci. Eng.*, 2012, **47**, 1543–1550.
- 16 S. Barişçi, Ö. Türkay, E. Ulusoy, and A. Dimoglo, *International Chemical Congress of Pacific Basin Societies*, 2015.
- 17 Y. Lin, S. Wu, C. Yang, M. Chen and X. Li, *Appl. Catal., B*, 2019, **245**, 71–86.
- 18 S. Wu, H. He, X. Li, C. Yang, G. Zeng, B. Wu, S. He and L. Lu, *Chem. Eng. J.*, 2018, **341**, 126–136.
- 19 S. Wu, H. Li, X. Li, H. He and C. Yang, *Chem. Eng. J.*, 2018, **353**, 533–541.
- 20 I. Michael, E. Hapeshi, C. Michael, A. Varela, S. Kyriakou, C. Manaia and D. Fatta-Kassinos, *Water Res.*, 2012, **46**, 5621–5634.
- 21 G. Moussavi, R. Khosravi and N. R. Omran, *Appl. Catal., A*, 2012, **445**, 42–49.
- 22 G. Moussavi and M. Mahmoudi, *Chem. Eng. J.*, 2009a, **152**, 1–7.
- 23 J. Nawrocki and B. Kasprzyk-Hordern, *Appl. Catal., B*, 2010, **99**, 27–42.
- 24 Y. Haldorai and J. Shim, *Appl. Surf. Sci.*, 2014, **292**, 447–453.
- 25 X. Liu, Z. Zhou, G. Jing and J. Fang, *Sep. Purif. Technol.*, 2013, **115**, 129–135.
- 26 F. J. Beltrán, F. J. Rivas and R. Montero-de-Espinosa, *J. Chem. Technol. Biotechnol.*, 2003, **78**, 1225–1233.
- 27 G. Moussavi, A. Aghapour and K. Yaghmaeian, *Journal of Health and Hygiene*, 2017, **8**, 7–19.
- 28 G. Moussavi, A. Aghapour and K. Yaghmaeian, *Chem. Eng. J.*, 2014, **249**, 302–310.
- 29 T. Yamamoto, S. I. Kim, J. Chaichanawong, E. U. Apiluck and T. Ohmori, *Appl. Catal., B*, 2009, **88**, 455–461.

- 30 G. Moussavi and R. Alizadeh, *Appl. Catal., B*, 2010, **97**, 160–167.
- 31 S. Golmohammadi, M. Ahmadpour, A. Mohammadi, A. Alinejad, N. Mirzaei, M. Ghaderpoori and A. Ghaderpoori, *Environ. Health Eng. Manage. J.*, 2016, **3**, 107–113.
- 32 M. Moonsiri, P. Rangsunvigit and S. Chavadej, *Chem. Eng. J.*, 2004, **97**, 241–248.
- 33 A. D. Eaton, L. S. Clesceri, and E. W. Rice, *Standard Methods for the Examination of Water and Wastewater*, American Water Works Association, 2012.
- 34 A. Mohseni Bandpi, A. Eslami, A. Shahsavani, F. Khodaghohi, A. Aliaghaei and A. Alinejad, *Toxin Rev.*, 2017, **36**, 116–124.
- 35 A. Mohseni Bandpi, A. Eslami, A. Shahsavani, F. Khodaghohi and A. Alinejad, *Sci. Total Environ.*, 2017, **593**, 182–190.
- 36 B. Nagappa and G. Chandrappa, *Microporous Mesoporous Mater.*, 2007, **106**, 212–218.
- 37 G. Moussavi and M. Mahmoudi, *J. Hazard. Mater.*, 2009b, **168**, 806–812.
- 38 M. Kermani, F. Bahrami Asl, M. Farzadkia, A. Esrafil, A. Salahshur, H. Arfaeinia and A. Dehgani, *Journal of Urmia University of Medical Sciences*, 2013, **24**, 839–850.
- 39 G. Socrates, *Infrared and Raman characteristic group frequencies: tables and charts*, John Wiley & Sons, 2001.
- 40 M. Ghaderpoori and M. H. Dehgani, *Desalin. Water Treat.*, 2016, **57**, 15208–15212.
- 41 A. A. Mohammadi, A. Alinejad, B. Kamarehie, S. Javan, A. Ghaderpoury, M. Ahmadpour and M. Ghaderpoori, *Int. J. Environ. Sci. Technol.*, 2017, 1–10.
- 42 Q. Sun, Y. Wang, L. Li, J. Bing, Y. Wang and H. Yan, *J. Hazard. Mater.*, 2015, **286**, 276–284.
- 43 M. H. Khan and J. Y. Jung, *Chemosphere*, 2008, **72**, 690–696.
- 44 B. Lan, R. Huang, L. Li, H. Yan, G. Liao, X. Wang and Q. Zhang, *Chem. Eng. J.*, 2013, **219**, 346–354.
- 45 H. Valdes, F. Murillo, J. Manoli and C. Zaror, *J. Hazard. Mater.*, 2008, **153**, 1036–1042.
- 46 Y. Jiang, C. Pétrier and T. D. Waite, *Ultrason. Sonochem.*, 2002, **9**, 163–168.
- 47 G. Asgari, H. Almasi, J. Fardmal, F. Ghanbari, Z. Daraie and S. Akbari, *J. Mazandaran Univ. Med. Sci.*, 2015, **24**, 252–262.
- 48 H. C. Wang, S. H. Chang, P. C. Hung, J. F. Hwang and M. B. Chang, *J. Hazard. Mater.*, 2009, **164**, 1452–1459.
- 49 F. J. Beltrán, F. J. Rivas and R. Montero-de-Espinosa, *Water Res.*, 2005, **39**, 3553–3564.
- 50 B. Kasprzyk-Hordern, M. Ziótek and J. Nawrocki, *Appl. Catal., B*, 2003, **46**, 639–669.
- 51 G. Moussavi, A. Khavanin and R. Alizadeh, *J. Hazard. Mater.*, 2009, **171**, 175–181.
- 52 A. Rahmani, J. Mehralipour, A. Shabanlo and S. Majidi, *Journal of Qazvin University of Medical Sciences*, 2015, **19**, 55–64.
- 53 G. V. Buxton, C. L. Greenstock, W. P. Helman and A. B. Ross, *J. Phys. Chem. Ref. Data*, 1988, **17**, 513–886.
- 54 G. Moussavi, A. Alahabadi, K. Yaghmaeian and M. Eskandari, *Chem. Eng. J.*, 2013, **217**, 119–128.
- 55 J. Staehelin and J. Hoigne, *Environ. Sci. Technol.*, 1982, **16**, 676–681.
- 56 R. Panonnummal and M. Sabitha, *Int. J. Biol. Macromol.*, 2018, **110**, 245–258.