



International Journal of Clinical and Health Psychology

www.elsevier.es/ijchp



COVID-19: Impact of diagnosis threat and suggestibility on subjective cognitive complaints



Daniella Winter, Yoram Braw*

Department of Psychology, Ariel University, Ariel, Israel

Received 16 February 2021; accepted 17 May 2021

Available online 24 May 2021

KEYWORDS

COVID-19
Post COVID-19 Neurological Syndrome (PCNS)
Diagnosis threat
Cognitive complaints
Experiment

Abstract Background/Objective: A subset of recovered COVID-19 patients report persistent neurological symptoms. These include non-specific symptoms (e.g., headaches and fatigue) which were found to be affected by psychological processes in other disorders (e.g., post-concussion syndrome, PCS, after mild traumatic brain injury). The current study assessed the impact of diagnosis threat (i.e., information regarding the long-term neurological impact of COVID-19) and suggestibility on endorsed symptoms of both recovered patients and healthy controls. **Method:** Recovered patients ($n = 90$) and healthy controls ($n = 210$) described their cognitive functioning after being randomly assigned to: (a) *Experimental group*: These participants read an article that explored long-term neurological symptoms among COVID-19 survivors. (b) *Control group*: These participants read an article providing general information regarding the disease. **Results:** Recovered patients, but not healthy controls, endorsed more symptoms in the experimental condition compared to the control condition. Moreover, suggestibility was correlated with endorsement of symptoms. **Conclusions:** Post COVID-19 neurological symptoms may, at least partially, be affected by non-neurological factors such as diagnosis threat. Information regarding long-term effects of COVID-19 may skew reported symptoms with highly suggestible individuals particularly susceptible to these effects. Further research, however, is needed to validate and elaborate upon these initial findings.

© 2021 Asociación Española de Psicología Conductual. Published by Elsevier España, S.L.U. This is an open access article under the CC BY-NC-ND license (<http://creativecommons.org/licenses/by-nc-nd/4.0/>).

PALABRAS CLAVE

COVID-19;
Síndrome neurológico post COVID-19;
Amenaza de diagnóstico;

COVID-19: impacto de la amenaza de diagnóstico y la suggestibilidad en las quejas cognitivas subjetivas

Resumen Antecedentes/Objetivo: Pacientes con COVID-19 recuperados informan síntomas neurológicos persistentes (e.g., dolor de cabeza y fatiga) que se vieron afectados por procesos psicológicos en otros trastornos (e.g., Síndrome postconmoción cerebral después de una lesión cerebral traumática leve). Se evaluó el impacto de la amenaza del diagnóstico (i.e., información

* Corresponding author. Department of Psychology, Ariel University, Ariel, Israel (40700). P.O.B. 3. Phone: 972-9076555
E-mail address: yoramb@ariel.ac.il (Y. Braw).

Quejas cognitivas;
Experimento

sobre el impacto neurológico a largo plazo del COVID-19) y la sugestión sobre los síntomas respaldados tanto de pacientes recuperados como de controles sanos. *Método:* Pacientes recuperados ($n = 90$) y controles sanos ($n = 210$) informaron sobre su funcionamiento cognitivo después de haber sido asignados al azar a: (a) condición que exploró los síntomas neurológicos a largo plazo entre los sobrevivientes de COVID-19; (b) condición de control que proporciona información general sobre la enfermedad. *Resultados:* Pacientes recuperados, pero no los controles sanos, aprobaron más síntomas en la condición experimental que en la control. La sugestión se asoció con una mayor aprobación de síntomas. *Conclusiones:* Los síntomas neurológicos posteriores al COVID-19 pueden verse afectados, al menos parcialmente, por factores no neurológicos como la amenaza del diagnóstico. La información sobre los efectos a largo plazo de COVID-19 puede sesgar los síntomas informados en individuos altamente sugestionables. Se necesitan más investigaciones para validar y desarrollar estos hallazgos iniciales.

© 2021 Asociación Española de Psicología Conductual. Published by Elsevier España, S.L.U. This is an open access article under the CC BY-NC-ND license (<http://creativecommons.org/licenses/by-nc-nd/4.0/>).

The Coronavirus Disease 2019 (COVID-19) outbreak constitutes a public health crisis at the international level (Lai, Shih, Ko, Tang, & Hsueh, 2020). Its symptoms include, among others, neurological deficits which may persist over time (Montalvan et al., 2020). For example, a subset of patients report symptoms such as dizziness, headaches, fatigue, and anosmia well after their initial recovery phase (Goërtz et al., 2020). This long-term cognitive dysfunction, a phenomenon termed Post COVID-19 Neurological Syndrome (PCNS), has drawn increased attention from researchers (Ritchie, Chan, & Watermeyer, 2020; Wijeratne & Crewther, 2020). As well as specific symptoms (e.g., anosmia), PCNS is associated with non-specific symptoms such as headaches, fatigue, and attentional impairment (Chen et al., 2021). These symptoms are common to many neuropsychiatric disorders and are also prevalent in the healthy population (Voormolen et al., 2019). Importantly, they are affected by non-neurological factors such as negative expectations regarding disease outcome and recovery. More specifically, 'diagnosis threat' refers to the impact of negative expectations on complaints regarding cognitive functioning and actual performance in neuropsychological tests (Suhr & Gunstad, 2002). For example, exposure to diagnosis threat significantly decreased memory performance of individuals with acquired brain injury (Fresson et al., 2019), a factor that was suggested to influence the persistence of symptoms in a minority of patients (i.e., post-concussion syndrome, PCS; Polinder et al., 2018).

We have limited understanding of PCNS at present and the factors that may contribute to its persistence. However, as diagnosis threat impacts the reporting of non-specific neurological symptoms in other disorders, there is value in assessing whether it may also impact such reports by recovered COVID-19 patients. Therefore, we randomized recovered COVID-19 patients and healthy controls to either diagnosis threat condition (i.e., participants received information regarding the neurological symptoms associated with PCNS) or control condition (i.e., participants received general information regarding COVID-19) as part of the current study. They then reported symptoms of cognitive dysfunction. As well as manipulating diagnosis threat, we also assessed the participants' suggestibility. The latter is defined as a communication process resulting in the acceptance of a proposition despite the absence of logically adequate

grounds for its acceptance (Gudjonsson, 1987). Importantly, suggestibility may be a key factor in explaining the effect of diagnosis threat. For example, highly suggestible participants experienced a greater decrease in performance following instructions that likely activated diagnosis threat (Carter-Allison et al., 2016). Relatedly, these individuals may be especially prone to report higher levels of cognitive dysfunction, particularly in contexts that reinforce their beliefs in these impairments (Delis & Wetter, 2007). We hypothesized that: (a) Participants, particularly recovered COVID-19 patients, will report greater cognitive dysfunction in the diagnosis threat condition compared to the control condition. (b) Suggestibility will be significantly correlated with reported cognitive dysfunction. (c) Suggestibility will moderate the relationship between diagnosis threat and reported cognitive dysfunction.

Method

Participants

Adult (i.e., ≥ 18 years old) native Hebrew speakers participated in the study ($N = 337$). The participants were recruited via social media forums devoted to COVID-19 and through Ariel University's experimental bulletin board. The latter were undergraduate students who received course credit for participating in the study. Those who were still ill were excluded ($n = 13$) and data of 24 additional participants who did not complete the survey or responded incorrectly to the manipulation check (see *procedure* subsection) were not analyzed (final $N = 300$, $n = 90$ recovered patients, $n = 210$ healthy controls). See CONSORT diagram (Figure 1).

Materials

Cognitive failures questionnaire (CFQ). A self-report scale that ranks cognitive failures in daily life, such as attention lapses and memory problems (Broadbent et al., 1982; Wilhelm et al., 2010). It consists of 25 items which indicate how often the participant noted a certain problem, with scores ranging from 0 (*never*) to 4 (*very often*). Total score served as its outcome measure (0–100). The CFQ has good internal consistency (internal consistency coefficient,

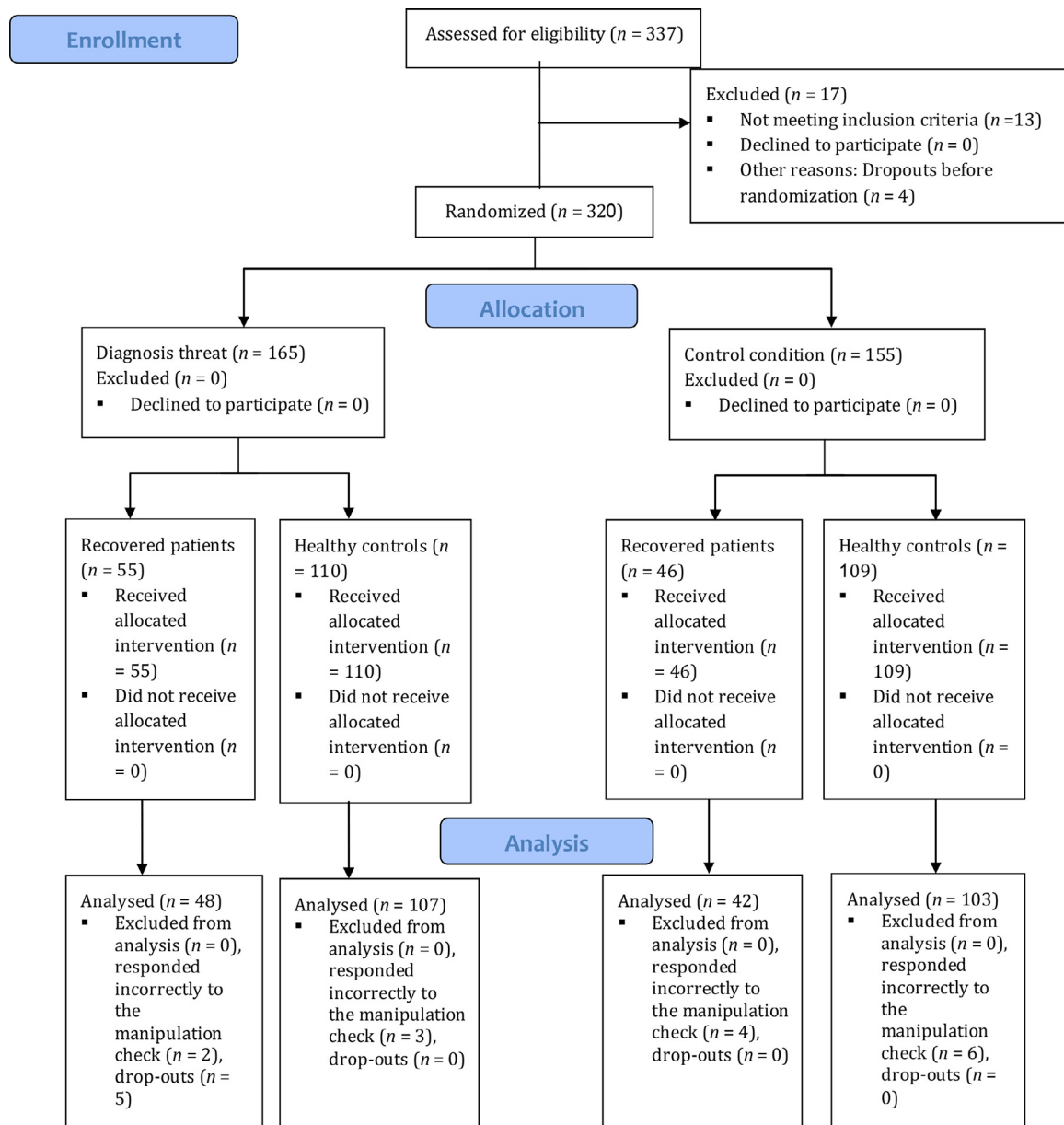


Figure 1 Consort flow diagram.

ICC = .89; Broadbent et al., 1982) and test-retest reliability (Bridger et al., 2013). Correspondingly, Cronbach's α in the current study was .92. Regarding validity, the CFQ is significantly correlated with other measures of subjective cognitive complaints (e.g., $r = .62$ with Reason's absent-mindedness questionnaire; Broadbent et al., 1982) and was described as a validated measure of real-world daily cognitive lapses which provides wider coverage than similar measures (Carrigan & Barkus, 2016).

Short suggestibility scale (SSS). A 21-item scale used to measure internalization and acceptance of messages. The SSS is a shorter version of the 95-item Multidimensional Iowa Suggestibility Scale (MISS; Kotov et al., 2004). Its items are related to consumer and psychological suggestibility, persuasiveness, peer conformity, and physiological reactivity (e.g., "I get a lot of good practical advice from magazines or TV"). Each item is rated from 1 (*not at all or very slightly*) to 5 (*a lot*). Total score

served as the outcome measure (21–105). The scale had high internal reliability ($r_s = .86-.89$) and was deemed reliable based on two different samples ($n = 712$ and $n = 638$; Kotov et al., 2004). Correspondingly, Cronbach's α in the current study was .91. The SSS is strongly correlated with the MISS (Kotov et al., 2004; Nitzan et al., 2015) and shows the expected associations with relevant variables among both healthy participants and clinical populations (e.g., overweight and obesity; Ray, Zachmann, Caudill, & Boggiano, 2020).

Procedure

The study was conducted using the Qualtrics survey software (for a related study using the platform, see Nelson et al., 2020). Participants provided general demographic data. They were then requested to read an article and were notified that they will be later questioned regarding its content

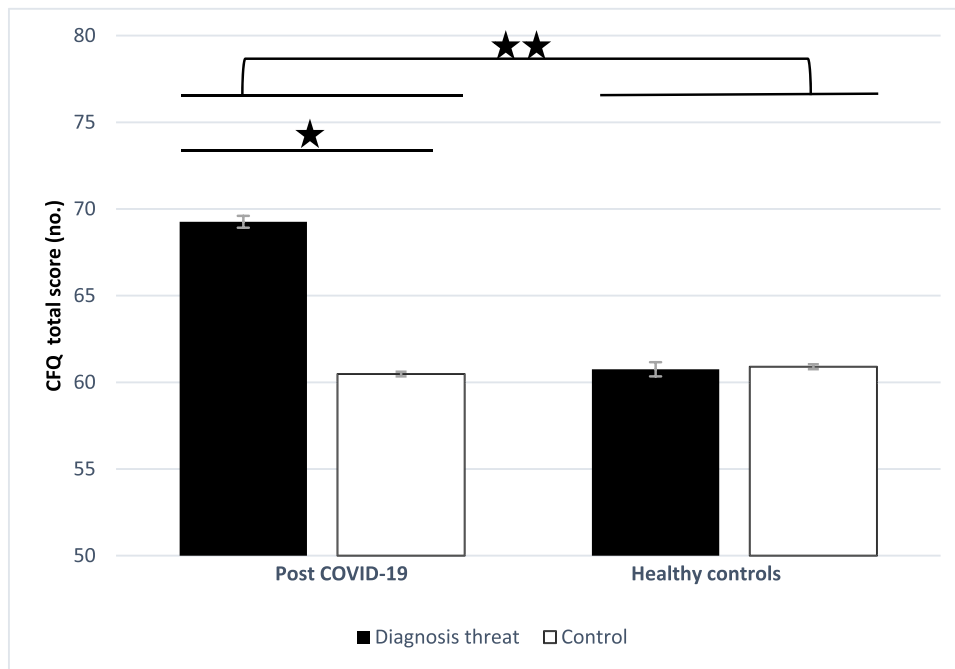


Figure 2 Group differences in CFQ total score

Note. * $p < .05$; ** $p < .01$

CFQ = Cognitive failures questionnaire.

Bars represent standard error of the mean.

(i.e., a manipulation check). Afterwards, the participants were randomly assigned to one of two conditions, regardless of their current COVID-19 status (recovered patients vs. healthy controls): (a) Diagnosis threat: The article presented information regarding neurological symptoms following recovery from COVID-19. (b) Control: The article described factors that influence official policies regarding length of quarantines (see Appendix A). The articles were extracted from the online edition of “Israel Hayom”, a widely distributed Israeli daily newspaper. Both articles had the same headline and contained an identical number of words. The manipulation check consisted of two questions pertaining to the article. Participants were requested to read the article again if responding incorrectly. Any errors in the second administration of the manipulation check led to the exclusion of the participant's data. Participants then completed the CFQ, SSS, and medical questionnaires. The latter collected relevant medical data, including information related to COVID-19, and were based on recent publications (e.g., Menni et al., 2020). The study was approved by the Institutional Review Board (IRB) committee with all participants consenting to participate in the study.

Results

Analyses of variance (ANOVAs) with a between-subjects factor of diagnosis threat (PCNS article or control article) and group (recovered COVID-19 patients or controls) was performed on cognitive complaints (CFQ total score). It indicated significant group and diagnosis threat main effects which were qualified by a significant group \times diagnosis threat interaction

[$F(1, 296) = 4.68, p = .031, \eta^2_p = 0.16, 95\% \text{ CI } [0.80, 8.29]$; $F(1, 296) = 4.69, p = .031, \eta^2_p = 0.14, 95\% \text{ CI } [0.06, 7.55]$; $F(1, 296) = 4.93, p = .027, \eta^2_p = 0.17, 95\% \text{ CI } [60.93, 64.80]$; respectively]. Among recovered COVID-19 patients, those in the diagnosis threat condition reported a larger cognitive impairment than those in the control condition, $t(86) = -2.46, p = .016, d = 0.52, 95\% \text{ CI } [-16.40, -1.15]$. In contrast, this difference was not significant among healthy controls, $t(206) = 0.07, p = .939$. See Figure 2. As the recovered COVID-19 patients and healthy controls differed in several variables (see Table 1), the analysis was repeated using these variables as covariates, either grouped together or in separate analyses. The findings of these analyses were like those of the original analyses and are therefore not presented.

A Pearson product-moment correlation analysis between the extent of cognitive complaints (CFQ total score) and suggestibility (SSS total score) revealed a significant positive correlation, $r = .40, p < .001$. Hayes' PROCESS module for SPSS (Hayes, 2018) was performed for each of 5000 bootstrapped samples. The combined effect of *diagnosis threat* and *suggestibility* on cognitive complaints (CFQ total score) was significant ($R^2 = .18, r = .42, F(3, 296) = 21.67, p < .001$). *Diagnosis threat* in isolation from suggestibility was not a significant predictor ($b = 1.83, t = 1.12, p = .261$). Suggestibility, however, in isolation from diagnosis threat remained significantly correlated with cognitive complaints ($b = 0.32, t = 3.52, p < .001, 95\% \text{ CI } [0.14, 0.50]$). The interaction was also significant, indicating that *suggestibility* moderates the effect of diagnosis threat on the participants' cognitive complaints ($R^2 = .01, b = 0.29, t = 2.33, p = .02, 95\% \text{ CI } [0.04, 0.55]$). Diagnosis threat was associated with the extent of cognitive complaints (i.e., CFQ total scores) among highly suggestible individuals (CFQ total score = 68.00

Table 1 Descriptive statistics and statistical analyses of demographic variables and suggestibility.

	Recovered COVID-19 patients			Healthy controls			Primary analyses	Post-hoc analyses
	Diagnosis threat ^A		Number	Diagnosis threat ^C		Control ^D		
	Mean ± SD	36/9		Mean ± SD	Number			
Parametric data								
Age (Years)	38.60 ± 1.61	36/9	38.84 ± 1.76	32/6	27.88 ± 1.05	77/29	Parametric analyses	A / B > C / D
Education (years)	15.26 ± 0.47	34/11	15.16 ± 0.53	33/5	12.95 ± 0.31	97/9	$F(3, 296) = 23.22, p < .0001$	A / B > C / D
SSS total score (no.)	43.15 ± 11.01		36.69 ± 9.23		48.14 ± 12.41		$F(3, 291) = 10.03, p < .0001$	C / D > B Differences with A
							$F(3, 296) = 9.94, p < .0001$	n.s.
Nonparametric data							Nonparametric analyses	
Gender (female / male)							$\chi^2(3) = 2.73, p = 0.43$	A / B > C / D ^a
Birth country (Israel / other)							$\chi^2(3) = 9.73, p < .021$	

Note.

^a Differences refer to Israel / other proportion.

SSS = Short suggestibility scale.

± 0.13; $b = 5.64, SE = 2.31, p = .015, 95\% CI [1.08, 10.19]$). In contrast, the effect was not significant among those with average (CFQ total score = $61.92 \pm 0.09; b = 1.83, SE = 1.62, p = .261$) or low suggestibility levels (CFQ total score = $55.84 \pm 0.13; b = -1.97, SE = 2.30, p = .391$). See [figure 3](#).

Exploratory analyses

Though not in the focus of the current study, we examined the contribution of the following demographic and disease-related variables: (a) Age: Pearson product-moment correlation analysis between suggestibility (SSS total score) and age revealed a significant inverse correlation, $r = -.36, p < .001$ (i.e., older participants tended to be less suggestible). However, entering age as a covariate in the analyses did not meaningfully alter the study's findings (not presented). (b) Gender: An independent-samples t -test revealed that women reported more cognitive impairment than men, $t(298) = -3.27, p < .001, d = 0.41, 95\% CI [-10.40, -2.42]$. Note, however, that the groups did not differ significantly in gender distribution and entering gender as an independent variable in the analyses did not alter the study's findings (not presented). (c) Duration of COVID-19 disease: Suggestibility (SSS total score) and duration of COVID-19 disease were not significantly correlated ($r = -.09, p = .401$). Correspondingly, use of disease duration as a covariate did not alter the study's findings (not presented).

Finally, cognitive complaints (CFQ total score) were analyzed using analysis of variance (ANOVA) with between-subjects factors of gender, education level (≤ 12 years, 13–15 years, ≥ 16 years) and suggestibility (low, average, and high; i.e., the sample was divided according to participants' SSS total scores). The analysis revealed no significant gender, education level, or suggestibility main effects [$F(1, 298) = 1.66, p = .20; F(2, 297) = 0.94, p = .51; F(2, 297) = 1.16, p = .254$; respectively]. Correspondingly, the suggestibility \times gender, suggestibility \times education level, and gender \times education level interactions were not significant [$F(2, 297) = 0.82, p = .66; F(4, 295) = 2.06, p = .81; F(2, 297) = 0.54, p = .82$; respectively]. The gender \times education \times suggestibility interaction was also not significant [$F(4, 295) = 1.60, p = .19$].

General remarks

Analyses were conducted using the IBM Statistical Package for Social Sciences (SPSS) version 26.0 with a two-tailed $p < .05$ considered statistically significant in all analyses. Variables were assumed to be normally distributed after examining histograms (in accordance with [Ghasemi & Zahediasl, 2012](#)).

Discussion

The current study contributes to the literature on diagnosis threat and suggestibility by focusing on the current COVID-19 pandemic. As expected, recovered COVID-19 patients reported more cognitive dysfunction than healthy controls, corresponding to recent studies ([Goertz et al., 2020](#)). The study's key finding, however, was the effect of diagnosis threat; exposure to information regarding PCNS increased self-reported symptoms of cognitive dysfunction, but only

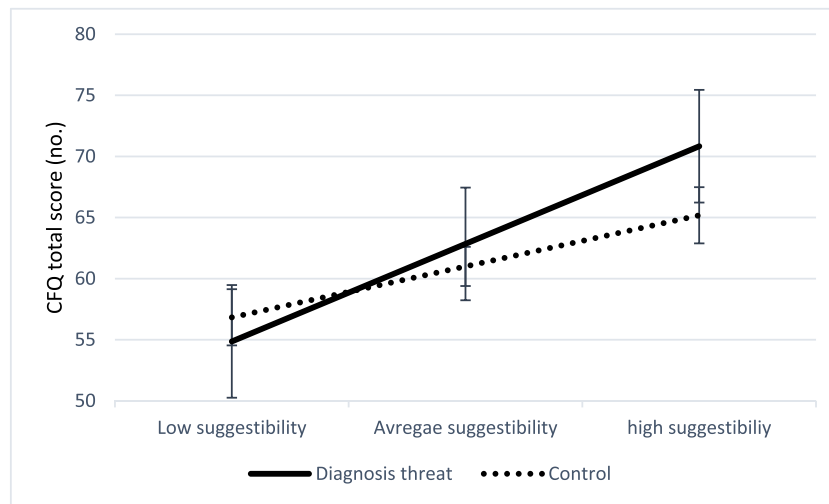


Fig. 3 Suggestibility differences in CFQ total score for diagnosis threat condition ($n = 155$) and control condition ($n = 144$)
Note.

CFQ = Cognitive failures questionnaire.

Bars represent standard error of the mean.

among recovered COVID-19 patients. Diagnosis threat appears to be a specific manifestation of negative response expectancies (Kirsch, 1999), overlapping with the nocebo effect. The latter refers to the effects of negative expectations or anticipated future outcomes on state of health, with studies repeatedly indicating its widespread impact (Colloca & Barsky, 2020). Though speculative at present, the effect may stem from priming of memories related to everyday cognitive lapses, common in the general population (Voormolen et al., 2019). This possibility is in line with the expectation as etiology theory according to which PCS results from the linking of everyday complaints to a previous injury (i.e., a concussion) and thereby fueling expectations about recovery (Broshek et al., 2015). Furthermore, the current study implicates suggestibility in the susceptibility to the impact of diagnosis threat (Carter-Allison et al., 2016). More specifically, highly suggestible recovered COVID-19 patients were found to be particularly prone to the effects of diagnosis threat in their reporting of cognitive dysfunction. Self-reports of everyday cognitive functioning, a key element in the medical interview, may therefore be prone to the effect of diagnosis threat and related non-neurological factors (e.g., clinician driven iatrogenic processes; Niesten et al., 2020).

Limitations of the current study include: (a) COVID-19 patients were mostly recruited through social media forums devoted to the disease. Therefore, the sample may not be representative of the general COVID-19 recovering patient population (e.g., participants in the current study may be more anxious or experience more symptoms). (b) The study included undergraduate students which were mostly healthy, likely contributing to baseline differences between the recovered COVID-19 patients and healthy controls. Readers are therefore advised to focus on the comparisons between the patient groups (diagnosis threat vs. control condition) which represent a more rigorous research design (i.e., randomized controlled trial). (c) As noted by an anonymous reviewer, additional variables that may have impacted the findings were not assessed. For example, disease duration and its consequences, psychological variables (e.g.,

affective symptoms and patient resilience which was recently suggested as predictor of adaptive response to the COVID-19 pandemic and lockdown; Kocjan, Kavčič, & Avsec, 2021) and environmental factors (e.g., exposure to stress significantly increases suggestibility; Morgan III et al., 2020). Since the current study was constructed as a preliminary investigation, these variables – apart from disease duration which likely did not impact the findings – were not assessed. Consequently, it is advisable to include them in future studies.

The findings of the current study should be viewed as preliminary and await validation. Researchers are encouraged to include non-recovered patients and increase the sample size to enable more elaborate analyses and exploration of relevant variables. The effects of neuropathology on self-reported cognitive functioning, a link that was suggested in recent studies (Sun et al., 2021), is in this regard an important path that researchers can follow. This is in line with studies linking subjective cognitive complaints to neurological biomarkers (Cantero, Iglesias, Van Leemput, & Atienza, 2016; Liang et al., 2020; Llado-Saz et al., 2015). Researchers are also encouraged to assess whether cognitive complaints are manifested in objective tests and real-life functioning, as well as explore recovered COVID-19 patients' mental health during the disease and after recovery (Bueno-Notivol, 2021), including variables that predict resilience in unusual circumstances (e.g., positive mental health; Brailovskaia & Margraf, 2020). Relatedly, misinformation regarding COVID-19 has been the focus of increased concern (Merckelbach et al., 2018; Pennycook, McPhetres, Zhang, Lu, & Rand, 2020). Individuals may not accurately distinguish between scientific and pseudoscientific information, leading to serious medical complications (Pulido, Ruiz-Eugenio, Redondo-Sama, & Villarejo-Carballido, 2020), which stresses the need to further research. Exploration of demographic variables is also of importance. For example, age was correlated with suggestibility in the current study. Similarly, older adults show greater reduction in suggestibility when exposed to misleading information compared to younger adults (Huff

& Umanath, 2018). Additionally, females reported more cognitive impairment than males in the current study, similar to earlier findings regarding general symptom endorsement in the context of COVID-19 (Fiorenzato et al., 2021). This likely did not confound the current study's conclusions, as the use of age as a covariate in the analyses did not alter the study's findings. Correspondingly, the groups did not differ significantly in gender distribution and gender did not alter the findings when entered as an independent variable. Nevertheless, this stresses the need for further research of these key demographic variables. Concepts related to suggestibility may also be the focus of research. For example, the 'being a patient effect' refers to the influence of group membership (i.e., knowledge that they are patients) on self-perception and cognitive functioning (Schwarz et al., 2018) and it would be of interest to investigate it with regard to COVID-19. Finally, strategies for using information in a beneficial manner should be investigated (e.g., offering psychoeducation on coping skills to manage patient expectations; Evers et al., 2021; Manai et al., 2019).

In summary, the current study demonstrates that information regarding COVID-19 may have clinical implications and, in certain cases, can increase subjective neurological complaints due to the deleterious effects of diagnosis threat. Moreover, highly suggestible recovered COVID-19 patients

may be particularly vulnerable to such an effect. It is advised that such factors be considered when assessing cognitive complaints of post COVID-19 patients (see, also, Evers et al., 2021). However, the current study's findings should be viewed as preliminary and await further research.

Acknowledgments

The research reported in this paper was completed as part of the first author's (D.W.) thesis (Rehabilitation Psychology, Ariel University, Ariel, Israel). We thank Mr. Tomer Elbaum for his aid in performing the statistical analyses.

Declarations of interest

None.

Funding

This research did not receive any specific grant from funding agencies in the public, commercial, or not-for-profit sectors.

Appendix

ARTICLE 1 (diagnosis threat condition):

WINNING THE BATTLE AGAINST COVID-19

Does COVID-19 cause brain dysfunction?

A research published in the journal *Brain* raises concerns that the virus causes cognitive impairment among some patients – “There is a need for neurological evaluations of recovered patients.”

Will the COVID-19 pandemic lead to a dramatic increase in individuals with brain dysfunction? This warning was issued in the brain research journal *Brain*, and it is based on very troubling findings that were gathered by researchers from the University College of London, adding to a disconcerting prior report from the University's Institute of Neurology.

According to the reports, patients with mild symptoms returned home and then developed a host of brain pathologies that included; strokes, damage to the nervous system, delirium, Guillain-Barre syndrome, sclerosis-like manifestations (known as ADEM), and other brain infections.

It should be noted that a similar phenomenon occurred in the 1920s after the severe Spanish influenza pandemic that erupted in 1918. As at present, a massive outbreak of encephalitis, termed lethargica, was evident among many recovered patients a few years after the pandemic. “My concern is that we currently have at least 10 million recovering patients who could be suffering from cognitive deficits that will impair their ability to work and perform day-to-day activities” said Adrian Owen, a neurology expert from the University of Western Ontario, to the Reuters news agency.

Concerns regarding these findings were also noted by the brain institute of the University College of London.

ARTICLE 2 (control condition):

WINNING THE BATTLE AGAINST COVID-19

Quarantine will be shortened for recovered COVID-19 patients.

According to a new procedure by the Ministry of Health, quarantines will last only 20 days – as was first published in *Israel Hayom* • Other patients will be considered as recovered after 10 days have passed since being tested.

As first published in *Israel Hayom*, the Ministry of Health announced a new procedure for defining severely and critically ill patients. These patients will be defined as recovered after 20 days have passed since first being diagnosed and without the need for a negative swab test. These patients will only be defined as recovered if they do not experience symptoms such as fever and coughs. A patient who is still hospitalized will be able to end their quarantine based on a medical report issued by an infectious disease specialist but will not be mandated to perform a swab test.

Residents of nursing homes and sheltered housing who were seriously ill will be able to shorten their quarantine's duration by undergoing two swab tests ten days after being diagnosed. The same procedure will apply for dialysis patients. According to the guidelines published today (Monday) by the head of the Public Health Services, Dr. Sharon Elroi Price, a verified patient will be defined as recovered when 10 days have passed since being tested positive, and if they had not experienced symptoms in the preceding three days. The guidelines are not only intended for mildly symptomatic patients who remained at home, but also for mildly and moderately ill patients who have been hospitalized for the duration of their disease, as well as for those who have been hospitalized for other reasons and were then diagnosed with COVID-19.

(Continued)

ARTICLE 1 (diagnosis threat condition):	ARTICLE 2 (control condition):
<p>Researcher Ross Patterson, one of the researchers which published the warning regarding the appearance of ADEM inflammation, says that "In the past, one adult was diagnosed with it circa ones a month. It is a disease that is common among children. But since the appearance of COVID-19, we have had a case like this at least once a week."</p> <p>"In fact, COVID-19 is a new disease, and we don't know enough about its effects on the brain."</p>	<p>Another novelty of the new guidelines is that an individual can be defined as recovered from COVID-19 based on the results of a serology test, thus exempting them from quarantine if they had been in contact with a patient or returned from a red country^a. The option of undergoing a serology test will not be offered to everyone, but rather only to household members of a verified patient or to those residing in geriatric institutions, as part of the <i>Father and Mother Protection</i> program.</p>
<p>Note.</p> <p>^aForeign countries are labeled green, yellow, or red by the Israeli Ministry of Health, based on the prevalence of COVID-19 in each country. The articles are composed of an identical number of words in their original Hebrew versions.</p>	

References

- Brailovskaia, J., & Margraf, J. (2020). Predicting adaptive and maladaptive responses to the Coronavirus (COVID-19) outbreak: A prospective longitudinal study. *International Journal of Clinical and Health Psychology, 20*(3), 183-191. <https://doi.org/10.1016/j.ijchp.2020.06.002>.
- Bridger, R. S., Johnsen, S. A., & Brasher, K. (2013). Psychometric properties of the Cognitive Failures Questionnaire. *Ergonomics, 56*(10), 1515-1524. <https://doi.org/10.1080/00140139.2013.821172>.
- Broadbent, D. E., Cooper, P. F., FitzGerald, P., & Parkes, K. R. (1982). The Cognitive Failures Questionnaire (CFQ) and its correlates. *British Journal of Clinical Psychology, 21*(1), 1-16. <https://doi.org/10.1111/j.2044-8260.1982.tb01421.x>.
- Broshek, D. K., De Marco, A. P., & Freeman, J. R. (2015). A review of post-concussion syndrome and psychological factors associated with concussion. *Brain Injury, 29*(2), 228-237. <https://doi.org/10.3109/02699052.2014.974674>.
- Bueno-Notivol, J., Gracia-García, P., Olaya, B., Lasheras, I., López-Antón, R., & Santabàrbara, J. (2021). Prevalence of depression during the COVID-19 outbreak: A meta-analysis of community-based studies. *International journal of clinical and health psychology, 21*(1).
- Cantero, J. L., Iglesias, J. E., Van Leemput, K., & Atienza, M. (2016). Regional Hippocampal Atrophy and Higher Levels of Plasma Amyloid-Beta Are Associated With Subjective Memory Complaints in Nondemented Elderly Subjects. *Journals of Gerontology Seires A: Biological Sciences and Medical Sciences, 71*(9), 1210-1215. <https://doi.org/10.1093/gerona/glw022>.
- Carrigan, N., & Barkus, E. (2016). A systematic review of cognitive failures in daily life: Healthy populations. *Neuroscience Biobehavioral Review, 63*, 29-42. <https://doi.org/10.1016/j.neubiorev.2016.01.010>.
- Carter-Allison, S. N., Potter, S., & Rimes, K. (2016). Diagnosis Threat and Injury Beliefs After Mild Traumatic Brain Injury. *Archives of Clinical Neuropsychology, 31*(7), 727-737. <https://doi.org/10.1093/arclin/acw062>.
- Chen, X., Laurent, S., Onur, O. A., Kleineberg, N. N., Fink, G. R., Schweitzer, F., & Warnke, C. (2021). A systematic review of neurological symptoms and complications of COVID-19. *Journal of Neurology, 268*, 392-402. <https://doi.org/10.1007/s00415-020-10067-3>.
- Colloca, L., & Barsky, A. J. (2020). Placebo and Nocebo Effects. *The New England Journal of Medicine, 382*(6), 554-561. <https://doi.org/10.1056/nejmra1907805>.
- Delis, D. C., & Wetter, S. R. (2007). Cogniform Disorder and Cogniform Condition: proposed diagnoses for excessive cognitive symptoms. *Archives of Clinical Neuropsychology, 22*(5), 589-604. <https://doi.org/10.1016/j.acn.2007.04.001>.
- Evers, A. W. M., Colloca, L., Blease, C., Gaab, J., Jensen, K. B., Atlas, L. Y., Beedie, C. J., Benedetti, F., Bingel, U., Buchel, C., Bussemaker, J., Colagiuri, B., Crum, A. J., Finniss, D. G., Geers, A. L., Howick, J., Klingler, R., Meeuwis, S. H., Meissner, K., Napadow, V., Petrie, K. J., Rief, W., Smeets, I., Wager, T. D., Wanigasekera, V., Vase, L., Kelley, J. M., Kirsch, I., & Consortium of Placebo, E. (2021). What Should Clinicians Tell Patients about Placebo and Nocebo Effects? Practical Considerations Based on Expert Consensus. *Psychotherapy and Psychosomatics, 90*(1), 49-56. <https://doi.org/10.1159/000510738>.
- Fiorenzato, E., Zabberoni, S., Costa, A., & Cona, G. (2021). Cognitive and mental health changes and their vulnerability factors related to COVID-19 lockdown in Italy. *PLoS ONE, 16*(1), e0246204.
- Fresson, M., Dardenne, B., & Meulemans, T. (2019). Influence of diagnosis threat and illness cognitions on the cognitive performance of people with acquired brain injury. *Neuropsychological Rehabilitation, 29*(10), 1637-1654. <https://doi.org/10.1080/09602011.2018.1439756>.
- Ghasemi, A., & Zahediasl, S. (2012). Normality tests for statistical analysis: A guide for non-statisticians. *International Journal of Endocrinology and Metabolism, 10*(2), 486-489. <https://doi.org/10.5812/ijem.3505>.
- Goërtz, Y. M., Van Herck, M., Delbressine, J. M., Vaes, A. W., Meys, R., Machado, F. V., & Spruit, M. A. (2020). Persistent symptoms 3 months after a SARS-CoV-2 infection: the post-COVID-19 syndrome? *ERJ Open Research, 6*(4). <https://doi.org/10.1183/23120541.00542-2020>.
- Gudjonsson, G. H. (1987). Historical background to suggestibility: How interrogative suggestibility differs from other types of suggestibility. *Personality and Individual Differences, 8*, 347-355.
- Hayes, A. F. (2018). Partial, conditional, and moderated moderated mediation: Quantification, inference, and interpretation. *Communication Monographs, 85*(1), 4-40. <https://doi.org/10.1080/03637751.2017.1352100>.
- Huff, M. J., & Umanath, S. (2018). Evaluating Suggestibility to Additive and Contradictory Misinformation Following Explicit Error Detection in Younger and Older Adults. *Journal of Experimental Psychology-Applied, 24*(2), 180-195. <https://doi.org/10.1037/xap0000138>.
- Kirsch, I. E. (1999). *How expectancies shape experience*. (pp. xiv-431). American Psychological Association. .
- Kotov, R. I., Bellman, S. B., & Watson, D. B. (2004). Short Suggestibility Scale. In.
- Kocjan, G. Z., Kavčič, T., & Avsec, A. (2021). Resilience matters: Explaining the association between personality and psychological functioning during the COVID-19 pandemic. *International Journal of Clinical and Health Psychology, 21*(1), 100198. <https://doi.org/10.1016/j.ijchp.2020.08.002>.

- Lai, C. C., Shih, T. P., Ko, W. C., Tang, H. J., & Hsueh, P. R. (2020). Severe acute respiratory syndrome coronavirus 2 (SARS-CoV-2) and corona virus disease-2019 (COVID-19): the epidemic and the challenges. *International Journal of Antimicrobial Agents*, 55, (3) 105924. <https://doi.org/10.1016/j.ijantimicag.2020.105924>
<https://doi.org/10.1016%2Fj.ijantimicag.2020.105924>.
- Liang, L., Zhao, L., Wei, Y., Mai, W., Duan, G., Su, J., ... Kong, J. (2020). Structural and Functional Hippocampal Changes in Subjective Cognitive Decline From the Community. *Frontiers in Aging Neuroscience*, 12, 64. <https://doi.org/10.3389/fnagi.2020.00064>.
- Llado-Saz, S., Atienza, M., & Cantero, J. L. (2015). Increased levels of plasma amyloid-beta are related to cortical thinning and cognitive decline in cognitively normal elderly subjects. *Neurobiology of Aging*, 36(10), 2791-2797. <https://doi.org/10.1016/j.neurobiolaging.2015.06.023>.
- Manai, M., van, Middendorp, H., Veldhuijzen, D. S., Huizinga, T. W. J., & Evers, A. W. M. (2019). How to prevent, minimize, or extinguish nocebo effects in pain: a narrative review on mechanisms, predictors, and interventions. *Pain Reports*, 4 (3), e699. <https://doi.org/10.1097/PR9.0000000000000699>.
- Menni, C., Valdes, A. M., Freidin, M. B., Sudre, C. H., Nguyen, L. H., Drew, D. A., Ganesh, S., Varsavsky, T., Cardoso, M. J., El-Sayed Moustafa, J. S., Visconti, A., Hysi, P., Bowyer, R. C. E., Mangino, M., Falchi, M., Wolf, J., Ourselein, S., Chan, A. T., Steves, C. J., & Spector, T. D. (2020). Real-time tracking of self-reported symptoms to predict potential COVID-19. *Nature Medicine*, 26(7), 1037-1040. <https://doi.org/10.1038/s41591-020-0916-2>.
- Merckelbach, H., Dalsklev, M., an Helvoort, D., Boskovic, I., & Otgaar, H. (2018). Symptom Self-Reports Are Susceptible to Misinformation. *Psychology of Consciousness: Theory, Research, and Practice*, 5(4). <https://doi.org/10.1037/cns0000159>.
- Montalvan, V., Lee, J., Bueso, T., De Toledo, J., & Rivas, K. (2020). Neurological manifestations of COVID-19 and other coronavirus infections: A systematic review. *Clinical Neurology and Neurosurgery*, 194, 105921. <https://doi.org/10.1016/j.clineuro.2020.105921>.
- Morgan, C. A., III, Dule, J., & Rabinowitz, Y. G. (2020). The impact of interrogation stress on compliance and suggestibility in US military special operations personnel. *Ethics, Medicine and Public Health*, 14, 100499.
- Nelson, B. W., Pettitt, A., Flannery, J. E., & Allen, N. B. (2020). Rapid assessment of psychological and epidemiological correlates of COVID-19 concern, financial strain, and health-related behavior change in a large online sample. *PLoS ONE*, 15,(11) e0241990. <https://doi.org/10.1371/journal.pone.0241990>.
- Nielsen, I. J. M., Merckelbach, H., Dandachi-FitzGerald, B., & Jelicic, M. (2020). The iatrogenic power of labeling medically unexplained symptoms: A critical review and meta-analysis of "diagnosis threat" in mild head injury. *Psychology of Consciousness: Theory, Research, and Practice*. <https://doi.org/10.1037/cns0000224>.
- Nitzan, U., Chalamish, Y., Krieger, I., Erez, H. B., Braw, Y., & Lichtenberg, P. (2015). Suggestibility as a predictor of response to antidepressants: A preliminary prospective trial. *Journal of Affective Disorders*, 185, 8-11. <https://doi.org/10.1016/j.jad.2015.06.028>.
- Pennycook, G., McPhetres, J., Zhang, Y., Lu, J. G., & Rand, D. G. (2020). Fighting COVID-19 misinformation on social media: Experimental evidence for a scalable accuracy-nudge intervention. *Psychological Science*, 31(7), 770-780. <https://doi.org/10.1177/0956797620939054>.
- Polinder, S., Cnossen, M. C., Real, R. G. L., Covic, A., Gorbunova, A., Voormolen, D. C., Master, C. L., Haagsma, J. A., Diaz-Arrastia, R., & von Steinbuechel, N. (2018). A Multidimensional Approach to Post-concussion Symptoms in Mild Traumatic Brain Injury. *Frontiers in Neural Circuits*, 9, 1113. <https://doi.org/10.3389/fneur.2018.01113>.
- Pulido, C. M., Ruiz-Eugenio, L., Redondo-Sama, G., & Villarejo-Carballido, B. (2020). A new application of social impact in social media for overcoming fake news in health. *International journal of environmental research and public health*, 17,(7) 2430. <https://doi.org/10.3390/ijerph17072430>.
- Ray, M. K., Zachmann, A. E., Caudill, C. V., & Boggiano, M. M. (2020). Relationship between trait suggestibility and eating-related behaviors in overweight and obesity. *Eating Behaviors*, 37, 101380. <https://doi.org/10.1016/j.eatbeh.2020.101380>.
- Ritchie, K., Chan, D., & Watermeyer, T. (2020). The cognitive consequences of the COVID-19 epidemic: collateral damage? *Brain Commun*, 2,(2) fcaa069. <https://doi.org/10.1093/braincomms/fcaa069>.
- Schwarz, K. A., Pfister, R., & Büchel, C. (2018). The being a patient effect: negative expectations based on group labeling and corresponding treatment affect patient performance. *Psychology, Health & Medicine*, 23(1), 99-105. <https://doi.org/10.1080/13548506.2017.1332375>.
- Suhr, J. A., & Gunstad, J. (2002). "Diagnosis Threat": The effect of negative expectations on cognitive performance in head injury. *Journal of Clinical and Experimental Neuropsychology*, 24(4), 448-457. <https://doi.org/10.1076/jcen.24.4.448.1039>.
- Sun, B., Tang, N., Peluso, M. J., Iyer, N. S., Torres, L., Donatelli, J. L., Munter, S. E., Nixon, C. C., Rutishauser, R. L., Rodriguez-Barraquer, I., Greenhouse, B., Kelly, J. D., Martin, J. N., Deeks, S. G., Henrich, T. J., & Pulliam, L. (2021). Characterization and Biomarker Analyses of Post-COVID-19 Complications and Neurological Manifestations. *Cells*, 10(2). <https://doi.org/10.3390/cells10020386>.
- Voormolen, D. C., Cnossen, M. C., Polinder, S., Gravesteijn, B. Y., Von Steinbuechel, N., Real, R. G. L., & Haagsma, J. A. (2019). Prevalence of post-concussion-like symptoms in the general population in Italy, The Netherlands and the United Kingdom. *Brain Injury*, 33(8), 1078-1086. <https://doi.org/10.1080/02699052.2019.1607557>.
- Wijeratne, T., & Crewther, S. (2020). Post-COVID 19 Neurological Syndrome (PCNS); a novel syndrome with challenges for the global neurology community. *Journal of the Neurological Sciences*, 419, 117179. <https://doi.org/10.1016/j.jns.2020.117179>.
- Wilhelm, O., Witthoft, M., & Schipolowski, S. (2010). Self-Reported Cognitive Failures: Competing Measurement Models and Self-Report Correlates. *Journal of Individual Differences*, 31(1), 1-14. <https://doi.org/10.1027/1614-0001/a000001>.