

RESEARCH ARTICLE

Open Access

Treatment of upper urinary tract stones with extracorporeal shock wave lithotripsy (ESWL) Sonolith vision

Kogenta Nakamura^{1*}, Motoi Tobiume¹, Masahiro Narushima², Takahiko Yoshizawa¹, Genya Nishikawa¹, Yoshiharu Kato¹, Remi Katsuda¹, Kenji Zennami¹, Shigeyuki Aoki¹, Yoshiaki Yamada¹, Nobuaki Honda¹ and Makoto Sumitomo¹

Abstract

Background: The aim was to retrospectively assess the results of treatment of upper urinary tract stones with the Sonolith vision manufactured by EDAP, and purchased in 2004.

Methods: The subjects were 226 Japanese patients who underwent extracorporeal shock wave lithotripsy (ESWL) alone as an initial treatment and could be followed up for at least 3 months, selected from 277 candidate patients who underwent this therapy between 2004 and 2006. Treatment effect was evaluated by kidney, ureter, and bladder X-ray or renal ultrasonography at 1 and 3 months after treatment. A stone-free status or status of stone fragmentation to 4 mm or smaller was considered to indicate effective treatment.

Results: At 3 months after treatment, the stone-free rate was 69.4% and the efficacy rate was 77.4% for renal stones, while these rates were 91.5 and 93.3%, respectively for ureteral stones. Assessment of treatment effect classified by the location of stones revealed a stone-free rate of 94.6% and an efficacy rate of 94.6% for lower ureteral stones (4.0 mm or smaller, 1 subject; 4.1-10.0 mm, 31 subjects; 10.1-20.0 mm, 5 subjects: number of treatment sessions, 1 or 2 sessions [mean: 1.03 sessions]). Complications of this therapy included renal subcapsular hematoma and pyelonephritis in 1 case each.

Conclusions: ESWL with the Sonolith vision manufactured by EDAP produced a treatment effect equivalent to those achieved with other models of ESWL equipment. ESWL seems to be an effective first-line treatment also in patients who have lower ureteral stones 10 mm or larger but do not wish to undergo TUL, if measures such as suitable positioning of the patient during treatment are taken.

Background

Extracorporeal shock wave lithotripsy (ESWL) was introduced in clinical practice by Chaussy *et al.* in the 1980 s [1]. Its usefulness is widely recognized, and it has become the most common treatment for upper urinary tract stones. ESWL has been performed more frequently than TUL for stone treatment in Japan compared with that in Europe and the United States (2008 General Meeting, Seminar of the Japanese Urological Association), which may be largely attributable to its simplicity

and/or the National Health Insurance System in Japan. Our hospital introduced the Sonolith vision (manufactured by EDAP) in March 2004 in place of the old equipment, and has been performing ESWL on patients with upper urinary tract stones. Here we report the favorable results of treatment of lower ureteral stones in cases where lithotripsy was difficult, which were achieved by putting the patient in a suitable position.

Methods

The present study was reviewed and approved by the Ethics Committee of Aichi Medical University School of Medicine (No. 11-015). The subjects were 226 Japanese patients who underwent ESWL alone and could be

* Correspondence: kogenaka@aichi-med-u.ac.jp

¹Department of Urology, Aichi Medical University School of Medicine
Nagakute, Aichi 480-1195, Japan

Full list of author information is available at the end of the article

followed up for at least 3 months, selected from 277 candidate patients who underwent this therapy as the initial treatment between March 1, 2004 and December 31, 2006. The subjects included 169 male and 57 female aged from 17 to 86 years (mean: 50.5 years). The stones were on the left side in 128 subjects and on the right side in 98. The locations and sizes of the stones are shown in Table 1.

Treatment was performed during a hospital stay of three days and two nights, and the subjects were only fasted before operation. Preoperative medication included diclofenac suppository, Atarax-P, atropine sulfate (i.m.), and glycerin enema (60 mL). When subjects complained of severe pain during operation, pentazocine (i.m.) was additionally administered. Renal stones were treated at a maximum energy level of 80%, while ureteral stones were treated at a level of 100%. Both renal and ureteral stones were treated with up to 3000 shock waves. Treatment effect was evaluated by kidney, ureter, and bladder (KUB) X-ray or intravenous pyelography at 1 and 3 months after operation, and was classified as stone-free status (absence of residual stones), effective (presence of residual stones 4 mm or smaller), inadequate (status other than the above), or ineffective (no stone fragmentation even after 2 treatment sessions of ESWL).

Treatment was completed if an effective or better response was demonstrated by KUB on the day after the operation. If stone fragmentation was found to be inadequate, a second ESWL session was performed after about 1 to 4 weeks. If any stone fragmentation was achieved, third and subsequent ESWL sessions were performed. Subjects with an inadequate or no response (ineffective) to ESWL underwent transurethral ureterolithotripsy (TUL) or percutaneous nephrolithotripsy (PNL). Subjects with urinary tract infection or with stones 20 mm or larger underwent placement of a double-J stent. During the procedure, subjects with renal or upper ureteral stones were placed in the ipsilateral supine position, those with middle ureteral stones in the ipsilateral prone position, and those with lower ureteral

stones in the contralateral prone position (Figure 1). Subjects with X-ray-negative stones underwent intravenous pyelography (IVP) and ureteral catheter insertion in combination with ESWL.

Results

Of the 226 cases, 30 cases underwent placement of a ureteral stent and 14 cases underwent IVP. When the stones were classified by location, middle renal stones were the most frequent (52 cases) among subjects with renal stones, while upper ureteral stones (113 cases) were the most frequent among subjects with ureteral stones. When the stones were classified by size, those 10.1 - 20.0 mm were the most frequent (43 cases) of renal stones, while those 4.1 - 10.0 mm were the most frequent (119 cases) of ureteral stones. One to 10 treatment sessions (mean: 1.62 sessions) were performed. Renal stones were treated with a mean of 1.8 sessions, of which middle renal stones of 20.1 mm or larger were treated with the largest number of sessions (mean: 3.9 sessions). Ureteral stones were treated with a mean of 1.44 sessions, of which middle ureteral stones of 10.1 - 20.0 mm or larger were treated with the largest number of sessions (mean: 3.6 sessions) (Table 2). One month after operation, the stone-free rate was 48.4% and the efficacy rate was 64.5% for renal stones, while these rates were 70.7 and 80.5%, respectively for ureteral stones. Three months after operation, the stone-free rate was 69.4% and the efficacy rate was 77.4% for renal stones, while these rates were 91.5 and 93.3%, respectively for ureteral stones. When the treatment effect was analyzed by the location of stones, a stone-free rate of 94.6% and an efficacy rate of 94.6% were achieved in subjects with lower ureteral stones (≤ 4.0 mm, 1 subject; 4.1 - 10.0 mm, 31 subjects; 10.1 - 20.0 mm, 5 subjects) with one or two ESWL treatment sessions (mean: 1.03 sessions) at three months after operation (Table 3). All five subjects with stones 10 mm or larger achieved a complete stone-free status.

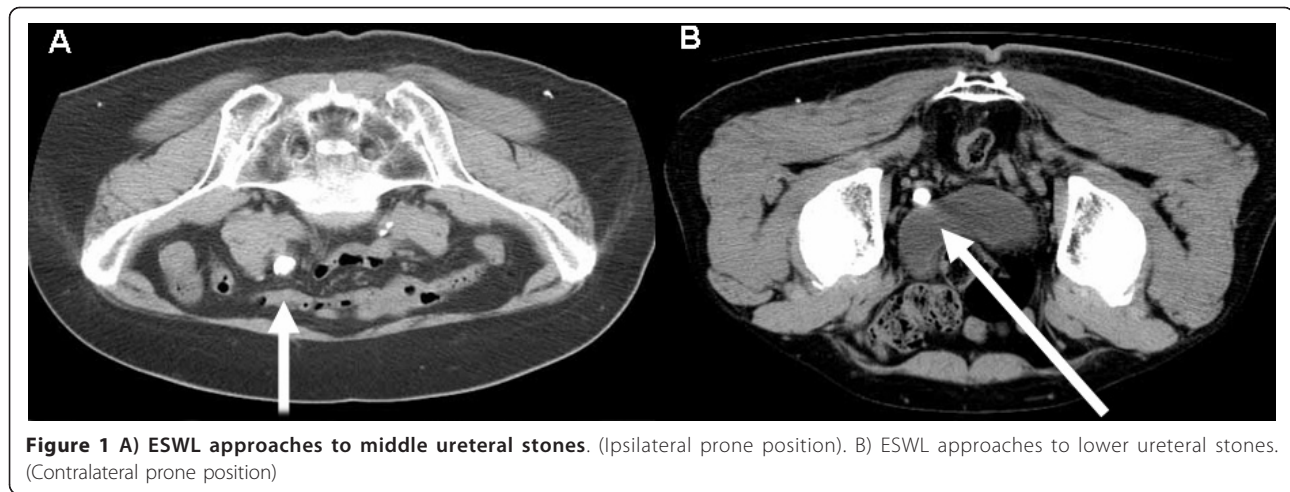
Fourteen subjects with X-ray-negative stones underwent intravenous pyelography (IVP) and ureteral catheter insertion in combination with ESWL. These patients had a stone-free status with only ESWL therapy.

Of the 25 cases in whom ESWL was ineffective, 8 cases were confirmed to be stone free three or more months after operation, while 7 cases with residual stones were followed up because hydronephrosis improved. Of the subjects with upper ureteral stones in whom ESWL was ineffective, 7 cases underwent TUL and 2 cases underwent PNL. One case with concomitant ureteral stenosis underwent holmium laser incision following stone fragmentation with TUL.

The chemical composition of stones could be determined in 128 cases. Calcium oxalate stones were the

Table 1 Location and size of stones

	≤ 4.0 mm	4.1-10.0 mm	10.1-20.0 mm	≥ 20.1 mm	Total (n)
Middle renal		5	36	11	52
Lower renal		2	7	1	10
Upper ureteral		77	35	1	113
Middle ureteral		11	3		14
Lower ureteral	1	31	5		37
Total (n)	1	126	86	13	226



most frequent (68 cases), followed by mixed calcium oxalate and calcium phosphate stones (49 cases), and stones containing calcium were present in 126 cases.

All subjects experienced postoperative gross hematuria as a complication. One case developed renal subcapsular hematoma which improved with conservative treatment. One case developed fever of 38°C or higher, which resolved with antibiotic therapy. Fifteen subjects required pentazocine for pain during the operative procedure.

Table 2 Location and size stones and number of treatment

		Number of treatment sessions						Mean (session)
		1	2	3	4	6	10	
Middle renal	4.1-10.0 mm	4	1					1.2
	10.1-20.0 mm	20	9	3	4			1.8
	≥ 20.1 mm	1	1	4	3	1	1	3.9
Lower renal	4.1-10.0 mm	2						1
	10.1-20.0 mm	3	3			1		2.1
	≥ 20.1 mm	1						1
Upper ureteral	4.1-10.0 mm	66	9	2				1.2
	10.1-20.0 mm	28	5	2				1.3
	≥ 20.1 mm	1						1
Middle ureteral	4.1-10.0 mm	10		1				1.2
	10.1-20.0 mm		1	1	1			3.6
Lower ureteral	4.1-10.0 mm	1						1
	10.1-20.0 mm	31						1
	≥ 20.1 mm	4	1					1.2
Total(n)		172	30	13	7	3	1	1.62

Discussion

Since Chaussy *et al.* [1] reported the application of ESWL with an HM-3 lithotripter manufactured by Dornier Co., Ltd. in clinical practice in the 1980 s, various models of ESWL equipment have been developed and improved. Shock wave generators have been developed, starting with the underwater spark gap type, followed by the electromagnetic conversion type and the piezoelectric element type. ESWL is now the first-line treatment for upper urinary tract stones.

Our hospital introduced the Sonolith vision (manufactured by EDAP) on March 1, 2004. This model belongs to third generation ESWL equipment. It uses electrical conduction electrodes as the shock wave generator, which generates shock waves in a highly electrical-conductive fluid. It provides accurate electrical discharge with high reproducibility, thus producing stable and constant energy. The use of a hydrophone pressure detector allows real-time display of the effective pressure of shock waves on a monitor. The generator is a shallow oval shape, and the output power can be adjusted to 100 different levels. The diameter of the shock-wave head is as large as 22 cm, and the consumptive electrodes can be used in four to five patients. This equipment has a focal depth of 130 mm and a focal size of 3 × 28 mm. The focal point is adjusted using an X-ray C-arm.

In 226 Japanese cases with renal or ureteral stones who were treated with ESWL in our hospital, the stone-free rate was 85.4% and the efficacy rate was 88.9%, showing similar results to those obtained by other researchers [2-5]. (Table 4).

With regard to lower ureteral stones, Hochreiter *et al.* [6] treated distal ureteral stones with the HM-3 lithotripter manufactured by Dornier in 518 patients, and reported a stone-free rate of 97.3% and efficacy rate of 99.4%. Park *et al.* [7], however, reported that the stone-free rate was 55.6% for lower ureteral stones of 10 mm

Table 3 Treatment results by location

Site	No of pts	1 month		3 months	
		Stone-free rate	Efficacy rate	Stone-free rate	Efficacy rate
Middle renal	52	53.80%	69.20%	71.20%	78.80%
Lower renal	10	20.00%	40.00%	60.00%	70.00%
Total (renal)	62	48.40%	64.50%	69.40%	77.40%
Upper ureteral	113	73.50%	83.20%	89.40%	92.00%
Middle ureteral	14	64.30%	71.40%	100%	100%
Lower ureteral	37	64.90%	75.70%	94.60%	94.60%
Total (ureteral)	164	70.70%	80.50%	91.50%	93.30%

or larger. Pardalidis *et al.* [8] also reported that treatment was not so effective, with a stone-free rate of 84.6%. Ghalayini *et al.* [10] compared laser TUL with ESWL, and reported that laser TUL was significantly more effective than ESWL, with a stone-free rate of 97.5% vs. 81.5% three months after operation. Wu *et al.* [11] compared holmium yttrium-aluminum-garnet (YAG) laser TUL with ESWL in patients with upper ureteral stones, and reported that there was no significant difference in the treatment effect on stones 10 mm or smaller, with a stone-free rate of 91.1% for TUL vs. 85.3% for ESWL, while there was a significant difference in the treatment effect on stones 10 mm or larger, with a stone-free rate of 76.8% for TUL vs. 35.2% for ESWL. They stated that laser TUL was superior to ESWL for the treatment of stones 10 mm or larger. In our study, however, all subjects with stones 10 mm or larger achieved a stone-free status. This may be attributable to our new measures: we usually place patients in the contralateral prone position to potentiate the treatment effect on lower ureteral stones, in accordance with the report by Köse *et al.* [12], and before ultrasonography we also apply jelly in a thin layer to the skin surface and to the area on the treatment table around the spot in contact with the skin to avoid exposure to air, thereby reducing minute air bubbles generated from the skin surface and minimizing attenuation of shock waves. ESWL seems to be an effective first-line treatment also in subjects who have lower ureteral stones 10 mm or larger but do not wish to undergo TUL, but it is sometimes difficult to treat stones greater than 10 mm by

ESWL monotherapy. So, it is necessary to perform ESWL and TUL combination therapy. In contrast, these subjects with X-ray-negative stones underwent intravenous pyelography (IVP) and ureteral catheter insertion in combination with ESWL. These patients of ours had a stone-free status with only ESWL therapy.

Madbouly *et al.* [13] recently reported that the treatment effect of ESWL with the Lithostar Multiline performed under general anesthesia was significantly greater when shock waves were delivered at a slow rate (60/min) than at a rapid rate (120/min), with an efficacy rate of 98.7% vs. 90.0%. Pace *et al.* [14] and Peterson *et al.* [15] also reported similar results. Thus, ESWL treatment should be performed at a slow rate in the future.

Complications of ESWL include renal subcapsular hematoma, the incidence of which has been reported to be between 0.078% and 0.6% [1,16], and has also been reported to increase up to 32% as a result of performance of postoperative routine CT and MRI [17]. Risk factors for renal subcapsular hematoma are reported to be 1) hypertension, 2) coagulopathy, and 3) previous ESWL therapy [18]. In our study, renal subcapsular hematoma occurred in one subject. This subject had a history of hypertension, which may have caused this complication.

Conclusions

ESWL with the Sonolith vision manufactured by EDAP produced a treatment effect equivalent to those achieved with other models of ESWL equipment. ESWL seems to be an effective first-line treatment also in patients who

Table 4 Treatment results by model

	White <i>et al.</i>	Johnson <i>et al.</i>	Egilmez <i>et al.</i>	Nomikos <i>et al.</i>	Our institute
Manufacturer	Dornier	Dornier	Siemens	EDAP	EDAP
Model	Delta lithotripter	Delta S lithotripter	Lithostar	Sonolith vision	Sonolith vision
No. of cases	5735	270	2670	309	226
Location of Stone	kidney/ureter	kidney/ureter	kidney/ureter	kidney	kidney/ureter
Stone-free rate (%)	58.5	73.3	79	75	85.4
Efficacy rate (%)	85.1	85.6			88.9

have lower ureteral stones 10 mm or larger but do not wish to undergo TUL, if measures such as suitable positioning of patients during treatment are taken.

Acknowledgements

Written consent was obtained from the patient and his family prior to publication of this manuscript.

Author details

¹Department of Urology, Aichi Medical University School of Medicine Nagakute, Aichi 480-1195, Japan. ²Department of Urology, Meitetsu Hospital Nagoya, Aichi 451-8511, Japan.

Authors' contributions

KN and MT drafted the report, cared for the patient and approved the final version of the manuscript. MN, TY, GN, YK, RK, KZ, SA, YY and NH cared for the patient and approved the final version of the manuscript. MS approved the final version of the manuscript.

Competing interests

The authors declare that they have no competing interests.

Received: 5 April 2011 Accepted: 12 December 2011

Published: 12 December 2011

References

1. Chaussy C, Schuller J, Schmiedt E, Brandl H, Jocham D, Liedl B: **Extracorporeal shock-wave lithotripsy (ESWL) for treatment of urolithiasis.** *Urology* 1984, **23**:59-66.
2. White W, Klen F: **Five-year clinical experience with the Dornier Delta lithotripter.** *Urology* 2006, **68**:28-32.
3. Johnson DB, Lowry PS, Schluckebier JA, Kryger JV, Nakada SY: **University of Wisconsin experience using the Doli S lithotripter.** *Urology* 2003, **62**:410-415.
4. Egilmez T, Tekin MI, Gonen M, Kilinc F, Goren R, Ozkardes H: **Efficacy and safety of a new-generation shockwave lithotripsy machine in the treatment of single renal or ureteral stones: Experience with 2670 patients.** *J Endourol* 2007, **21**:23-27.
5. Nomikos MS, Sowter SJ, Tolley DA: **Outcomes using a fourth-generation lithotripter: a new benchmark for comparison.** *BJU Int* 2007, **100**:1356-1360.
6. Hochreiter WW, Danuser H, Perrig M, Studer UE: **Extracorporeal shock wave lithotripsy for distal ureteral calculi: What a powerful machine can achieve.** *J Urol* 2007, **169**:878-880.
7. Park H, Park M, Park T: **Two-year experience with ureteral stones: Extracorporeal shockwave lithotripsy v ureteroscopic manipulation.** *J Endourol* 1998, **12**:501-504.
8. Pardalidis NP, Kosmaoglou EV, Kapotis CG: **Endoscopy vs. extracorporeal shockwave lithotripsy in the treatment of distal ureteral stone: ten years' experience.** *J Endourol* 1999, **13**:161-164.
9. Pearle MS, Nadler R, Bercowsky E, Chen C, Dunn M, Figenshau RS, Hoenig DM, McDougall EM, Mutz J, Nakada SY, Shalhav AL, Sundaram C, Wolf JS Jr, Clayman RV: **Prospective randomized trial comparing shock wave lithotripsy and ureteroscopy for management of distal ureteral calculi.** *J Urol* 2001, **166**:1255-1260.
10. Ghalayini IF, Al-Ghazou MA, khader YS: **Extracorporeal shockwave lithotripsy versus ureteroscopy for distal ureteric calculi: Efficacy and patient satisfaction.** *Int Braz J Urol* 2006, **32**:656-664.
11. Wu CF, Chen CS, Lin WY, Shee JJ, Chen Y, Huang WS: **Therapeutic options for proximal ureter stone: Extracorporeal shock wave lithotripsy versus semirigid ureterorenoscope with Holmium: Yttrium-aluminum-garnet laser lithotripsy.** *Urology* 2005, **65**:1075-1079.
12. Köse AC, Demirbas M: **The modified prone position: a new approach for treating prevesical stones with extracorporeal shock wave lithotripsy.** *BJU Int* 2004, **93**:369-373.
13. Madbouly K, El-Tiraifi AM, Seida M, El-Faqih SR, Atassi R, Talic RF: **Slow versus fast shock wave lithotripsy rate for urolithiasis: A prospective randomized study.** *J Urol* 2005, **173**:127-130.
14. Pace KT, Ghiculete D, Harju M: **Shock wave lithotripsy at 60 or 120 shocks per minute: A randomized, double-blind trial.** *J Urol* 2005, **174**:595-599.
15. Paterson RF, Lifshitz DA, Lingeman JE, Evan AP, Connors BA, Fineberg NS, Williams JC Jr, McAteer JA: **Stones fragmentation during shock wave lithotripsy is improved by slowing the shock wave rate: Study with a new animal model.** *J Urol* 2002, **168**:2211-2215.
16. Newman LH, Saltzman B: **Identifying risk factors in development of clinically significant post-shock-wave lithotripsy subcapsular hematomas.** *Urology* 1991, **38**:35-38.
17. Knapp PM, Kulb TB, Lingeman JE, Newman DM, Mertz JH, Mosbaugh PG, Steele RE: **Extra corporeal shock wave lithotripsy-induced perirenal hematomas.** *J Urol* 1998, **139**:700-703.
18. Collado Serra A, Huguet Pérez J, Monreal García de Vicuña F, Rousaud Barón A, Izquierdo de la Torre F, Vicente Rodríguez J: **Renal hematoma as a complication of extracorporeal shock wave lithotripsy.** *Scand J Urol Nephrol* 1999, **33**:171-175.

Pre-publication history

The pre-publication history for this paper can be accessed here:
<http://www.biomedcentral.com/1471-2490/11/26/prepub>

doi:10.1186/1471-2490-11-26

Cite this article as: Nakamura et al.: Treatment of upper urinary tract stones with extracorporeal shock wave lithotripsy (ESWL) Sonolith vision. *BMC Urology* 2011 **11**:26.

Submit your next manuscript to BioMed Central and take full advantage of:

- Convenient online submission
- Thorough peer review
- No space constraints or color figure charges
- Immediate publication on acceptance
- Inclusion in PubMed, CAS, Scopus and Google Scholar
- Research which is freely available for redistribution

Submit your manuscript at
www.biomedcentral.com/submit

