

The oral bioavailability, excretion and cytochrome P450 inhibition properties of epiberberine: an in vivo and in vitro evaluation

Ning Chen¹
Xiao-yan Yang^{1,2}
Chang-e Guo¹
Xin-ning Bi¹
Jian-hua Chen¹
Hong-ying Chen¹
Hong-pin Li¹
Hong-ying Lin¹
Yu-jie Zhang¹

¹School of Chinese Materia Medica, Beijing University of Chinese Medicine, Beijing, ²Nanjing Sanhome Pharmaceutical Co., Ltd., Nanjing, China

Abstract: Epiberberine (EPI) is a novel and potentially effective therapeutic and preventive agent for diabetes and cardiovascular disease. To evaluate its potential value for drug development, a specific, sensitive and robust high-performance liquid chromatography-tandem mass spectrometry assay for the determination of EPI in rat biological samples was established. This assay was used to study the pharmacokinetics, bioavailability and excretion of EPI in rats after oral administration. In addition, a cocktail method was used to compare the inhibition characteristics of EPI on cytochrome P450 (CYP450) isoforms in human liver microsomes (HLMs) and rat liver microsomes (RLMs). The results demonstrated that EPI was rapidly absorbed and metabolized after oral administration (10, 54 or 81 mg/kg) in rats, with T_{max} of 0.37–0.42 h and $T_{1/2}$ of 0.49–2.73 h. The C_{max} and area under the curve values for EPI increased proportionally with the dose, and the oral absolute bioavailability was 14.46%. EPI was excreted mainly in bile and feces, and after its oral administration to rats, EPI was eliminated predominantly by the kidneys. A comparison of the current half-maximal inhibitory concentration and K_i values revealed that EPI demonstrated an obvious inhibitory effect on CYP2C9 and CYP2D6. Furthermore, its effect was stronger in HLM than in RLM, more likely to be a result of noncompetitive inhibition.

Keywords: epiberberine, bioavailability, excretion kinetics, CYP inhibition type

Introduction

Epiberberine (EPI; Figure 1), one of the main active protoberberine alkaloids, is found in “Rhizoma Coptidis” (Huanglian).¹ Rhizoma Coptidis is a famous Chinese herb, which has been widely used in folk medicine for more than 2000 years. Modern pharmacological studies suggest that EPI has broad biological activity, including antihyperlipidemic^{2–6} and antihyperglycemic^{7–11} effects as well as anti-inflammatory,^{12,13} anti-Alzheimer and antioxidant effects,¹⁴ and inhibits urease activity.¹⁵ In addition, EPI interacts with the human organic cation transporters (OCTs) 1, 2 and 3¹⁶ and the cytochrome P450 (CYP450) enzyme.¹⁷ When considering binding affinity to DNA and aldose reductase inhibitory activity, EPI is more active than other coptis alkaloids including berberine, coptisine, palmatine and jatrorrhizine.¹⁸ More importantly, the results for acute and subchronic toxicity in mice and rats indicate EPI is a safe compound and its toxicity is lower compared with that of the other coptis alkaloids.^{19,20} This evidence suggests that EPI holds promise as a therapeutic and preventive agent for cardiovascular disease, metabolic syndrome, Alzheimer’s disease and oxidative stress-related disease, diabetic complications, diabetes mellitus and other diseases. Until now, although EPI has been confirmed to carry enviable pharmacological activity,

Correspondence: Yu-jie Zhang
Department of Chinese Materia Medica,
Beijing University of Chinese Medicine,
Sunshine South Street, Liangxiang,
Fangshan District, Beijing 102488, China
Tel +86 10 8473 8618
Fax +86 10 8473 8611
Email zhyj227@126.com

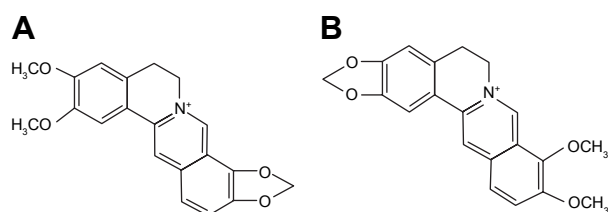


Figure 1 Chemical structure of EPI (A) and berberine (B).

Abbreviation: EPI, epiberberine.

few studies have been conducted to investigate absorption, distribution, metabolism and excretion (ADME) as well as its pharmacokinetic characterizations for drug development. The evaluation of the EPI inhibitory effects on CYP450 isoforms has been focused on continuously; however, the results are not sufficiently comprehensive, and further research is needed.

Therefore, the purpose of this study was to establish a sensitive and robust high-performance liquid chromatography-tandem mass spectrometry (HPLC-MS/MS) assay to measure EPI concentrations in biological samples. The results of the assay were then used to confirm the following pharmacokinetic properties: 1) the plasma pharmacokinetics; 2) the biliary, urinary and fecal excretion; 3) the relative inhibition of CYP450 isoforms in the mixed human liver microsome (HLM) and rat liver microsome (RLM) systems; and 4) the inhibition type.

Materials and methods

Chemicals and reagents

EPI (purity >98%) was purchased from Chengdu Pharmaceutical Co., Ltd. (Chengdu, China). Berberine (the internal standard [IS], purity \geq 98%) was obtained from the National Institute for Control of Pharmaceutical and Biological Products. HLM and RLM were procured from Huizhi Kangtai Tech (iPhase Pharmaceutical Services, Beijing, China). α -Metoprolol, dapson, phenacetin, chlorzoxazone and tolbutamide were Sigma (Sigma-Aldrich Chemical Co., St. Louis, USA) products purchased

from Beijing Bayer Biology Biotechnology Co., Ltd. 4-Hydroxytoluene sulfonylurea was obtained from Beijing Leon Technology Co., Ltd. α -Hydroxymetoprolol was procured from TRC Co., Ltd (Toronto, Canada). Methanol, acetonitrile and formic acid (HPLC grade) were supplied by Thermo Fisher Technologies Inc. (Pittsburgh, MA, USA). The distilled deionized water used in all experiments was purified by a Milli-Q water purification system (Merck Millipore Co., Darmstadt, Germany). In addition, the remainder of the reagents and chemicals were analytically pure and were purchased from domestic markets.

Animals and experimental design

Male Sprague Dawley rats, weighing 200 ± 20 g, were purchased from the Laboratory Animal Centre of Vital River (Beijing, China) and given an animal feed production certificate number (SCXK, 2012-0001). The rats were maintained in a breeding room under controlled temperature (25°C), humidity ($55\% \pm 5\%$) and lighting (12-hour light, 12-hour dark). About 12 h prior to each experiment, the rats were fasted with free access to water. The animal experiments were performed according to the Guide for the Care and Use of Laboratory Animals prepared by the Institute of Laboratory Animal Resources. Ethical approvals for the animal experiments were obtained from the animal ethics committee of Beijing University of Chinese Medicine.

Pharmacokinetic studies

A total of 24 rats were randomly divided into two groups: group 1 ($n=18$) and group 2 ($n=6$). In addition, rats in group 1 were orally administered at doses of 10, 54 and 81 mg/kg (six rats per dose), while rats in group 2 were intravenously injected at a dose of 10 mg/kg. Blood samples (each 0.3 mL) were collected from the postorbital venous plexuses of each rat into heparinized tubes at various time points after oral administration and intravenous dosing (group 1 and group 2, respectively Table 1). After centrifugation at $15,000 \times g$ for 10 min, the plasma samples were obtained. Then, a 100 μL plasma

Table 1 Protocol for the pharmacokinetic and excretion study of EPI in rats

Groups	Samples	n	Routes	Dose (mg/kg)	Collection times (h)
1	Plasma	18	Oral	10, 54, 81	0.083, 0.25, 0.3, 0.33, 0.37, 0.42, 0.58, 1, 2, 4, 8, 12, 16, 24
2	Plasma	6	Intravenous	10	0.033, 0.083, 0.13, 0.17, 0.25, 0.5, 1, 2, 4, 6, 480, 12, 24
3	Urine, feces	12	Oral	54, 81	-3-0, 0-3, 3-6, 6-9, 9-12, 12-24, 24-36, 36-48, 48-60, 60-72
4	Bile	12	Oral	54, 81	0-3, 3-6, 6-9, 9-12, 12-24
5	Urine, feces	6	Intravenous	10	0-24
6	Bile	6	Intravenous	10	0-24
7	Blank bile	6	Oral	Blank solvent	-3-0
8	Blank bile	6	Intravenous	Blank solvent	-3-0

Abbreviation: EPI, epiberberine.

aliquot (containing 0.5 µg/mL of berberine as the IS) was deproteinated by the addition of two volumes of acetonitrile. After vortex mixing for 1 min, the mixture was centrifuged at 15,000× *g* for 10 min. A 10 µL aliquot of the supernatant was injected into the HPLC-MS/MS instrument for analysis.

Excretion study

A total of 48 rats were randomly divided into eight groups (n=6). Each rat was administered 54 or 81 mg/kg of EPI through oral administration or intravenous injection at a dose of 10 mg/kg. The rats were then placed into separate metabolic cages designed for the separation and collection of urine and feces. The control groups received solvent via oral administration or intravenous injection. Urine and feces were collected before and after dosing at various time points (group 3 and group 5; Table 1). Bile samples were also collected by biliary cannulation before and after dosing using the same routes and doses as described earlier (group 4, group 6, group 7 and group 8; Table 1).

For quantitative analysis, the urinary, fecal and biliary samples were prepared as follows. The urinary and biliary samples were spiked with 10 µL of berberine solution (IS, 5 µg/mL), methanol was added (1:3, v/v) and they were vortex mixed and centrifuged at 15,000× *g* for 15 min. The fecal samples (0.5 g) were dried at 80°C for 2 h, spiked with 10 µL of berberine (IS, 5 µg/mL) and 2 mL methanol, vortex mixed for 10 s and soaked for 1 h. The samples were then extracted via ultrasonication for 30 min and centrifuged at 15,000× *g* for 15 min. The supernatant (10 µL) was injected into the HPLC-MS/MS system for analysis.

In vitro assay of CYP450 activity in RLM or HLM

The incubation mixture (total volume, 200 µL) used in our previous study²¹ contained 0.6 mg/mL RLM or HLM, 20 mM glucose-6-phosphate, 2 U/L of glucose-6-phosphate dehydrogenase, 0.1 mM potassium phosphate buffer (pH 7.4), 1 mM NADPN₂, 20 mM MgCl₂ and specific substrates in the absence or presence of various concentrations of EPI. The substrates such as tolbutamide (CYP2C9), metoprolol (CYP2D6), phenacetin (CYP1A2), chlorzoxazone (CYP2E1) and dapsone (CYP3A4) were used at final concentrations of 10 µM (55 µM for dapsone). EPI was dissolved in methanol, and the final concentration of methanol in the solution was less than 0.5% (v/v). After a 5-minute preincubation at 37°C, nicotinamide adenine dinucleotide phosphate (NADPH) was added to the mixture to initiate the reaction. The reactions were quenched by adding 100 µL of acetonitrile and 20 µL of schisandrol A (31.5 µg/mL) as an IS. The

mixture was centrifuged at 15,000× *g* for 10 min, and an aliquot of supernatant was transferred to an auto-injector vial for HPLC analysis.

Determination of enzyme inhibition kinetics

To evaluate the order of inhibition kinetics and calculate the inhibition parameters, various concentrations of EPI were added to reaction mixtures containing various concentrations of tolbutamide (for CYP2C9) or metoprolol (for CYP2D6; Table 2). After a 120-minute incubation at 37°C, the reactions were quenched by adding 100 µL acetonitrile with phenacetin (100 µM) as an IS. The mixture was centrifuged at 15,000× *g* for 10 min, and an aliquot of supernatant was transferred to an auto-injector vial for the analysis of substrate metabolites (4-hydroxytolbutamide and α-hydroxymetoprolol) by HPLC or HPLC-MS/MS. Dixon and Lineweaver plots²² were adapted to determine the inhibition type, and a second plot of the slope from the Lineweaver–Burk plot versus EPI concentration was utilized to calculate the inhibitory constant (*K_i*) values.

Apparatus and chromatographic conditions

LC-MS/MS was used to quantify the EPI in the rat bio-samples. The EPI concentrations were determined using a Thermo Fisher Scientific TSQ Quantum triple quadrupole system (Thermo Fisher Scientific, Waltham, MA, USA) equipped with an electrospray ionization source in selected reaction monitoring (SRM) mode. Following optimization of the setting parameters, the instrument was operated in positive mode with an ion spray voltage of 3,400 V. The capillary temperature was set at 300°C. The SRM transitions were *m/z* 336.1→320.2 for EPI and berberine (IS; Figure S1). The analytes were chromatographically separated by an Agilent Eclipse XDB-C18 column (150×4.6 mm, 5 µm; Agilent Technologies, Santa Clara, CA, USA) using an acetonitrile and 0.1% formic acid aqueous solution (30:70, v/v) as a mobile phase at a flow rate of 1 mL/min.

A specific CYP450 cocktail assay for the simultaneous measurement of five substances (tolbutamide, metoprolol,

Table 2 A series of concentrations of EPI and a series of concentrations of specific substrates of CYP450 isoforms for Dixon and Lineweaver–Burk plots

Isoforms	Concentration of EPI (µM)	Substrates	Concentration of substrates (µM)
CYP2C9	2.5, 5, 10 and 20	Tolbutamide	12.5, 25, 50 and 100
CYP2D6	2.5, 5, 10 and 20	Metoprolol	5, 10, 20 and 40

Abbreviations: CYP450, cytochrome P450; EPI, epiberberine.

phenacetin, chlorzoxazone and dapsone) in microsomes was achieved on the column, as described earlier, using a previously validated HPLC method.²¹

4-Hydroxytolbutamide and phenacetin (IS) in HLM were analyzed using reversed-phase HPLC consisting of a mobile phase flow (1 mL/min) of 25% acetonitrile and 75% of 0.1% formic acid in water at 40°C. The eluent was monitored at 230 nm using a ultraviolet (UV) detector.

α -Hydroxymetoprolol and phenacetin (IS) in HLM and RLM were analyzed via the previously described HPLC-MS/MS system and the same type column. The mobile phase consisted of a mixture of acetonitrile and diammonium hydrogen phosphate buffer (pH 3.4; 25:75, v/v, %) with a flow rate of 1.0 mL/min at 30°C. Following optimization of the setting parameters, the instrument was operated in positive mode with an ion spray voltage of 2,700 V. The capillary temperature was set at 200°C. The SRM transitions were m/z 284.1→116.2 for α -hydroxymetoprolol and m/z 180.1→138.3 for phenacetin (IS; [Figure S2](#)).

Data analysis

A noncompartmental analysis utilizing WinNonlin 5.2 software (Pharsight, St Louis, MO, USA) was employed to calculate the pharmacokinetic parameters. The parameters are presented as mean \pm standard deviation (SD). The cumulative excretion percentage was calculated via the following formula:

$$\text{Cumulative excretion percentage (\%)} = \frac{\text{Cumulative excretion amount}}{\text{Dose}} \times 100\%.$$

Results

Method validation

[Figures S3 and S4](#) show typical chromatograms of plasma, urine, feces and bile samples, including blank samples, each blank spiked with EPI and IS, and samples of plasma,

urine, feces and bile after oral administration. The developed method was determined to be selective, and no endogenous interference or other impurities were observed. The retention time of EPI and IS was 4.61 and 7.54 min, respectively.

Representative chromatograms of α -hydroxymetoprolol and 4-hydroxytolbutamide in microsomes are presented in [Figures S5 and S6](#), including blank, blank spiked with reference substances and IS and microsome samples following incubation. The developed method was determined to be selective, and no endogenous interference or other impurities were observed.

The linearity results for EPI in rat samples and α -hydroxymetoprolol and 4-hydroxytolbutamide in microsomes are summarized in [Tables S1 and S2](#). The detection limit was sufficient for the study requirements.

The precision and accuracy were determined by five replicate analyses of quality control samples at high, medium and low concentrations. The precision of the assay method, including intraday and inter-day precision (relative standard deviation [RSD]), was <15%. The accuracy is presented as the relative error within $\pm 15\%$. The analyses revealed that the samples were stable when stored at -20°C for 7 days or 4°C in plastic auto-sampler vials for 8 h.

The results of extraction recoveries and matrix effects for EPI in rat samples and α -hydroxymetoprolol and 4-hydroxytolbutamide in microsomes are summarized in [Tables 3 and 4](#).

Pharmacokinetics and oral bioavailability of EPI in rats

The mean concentration–time curves for EPI in rat plasma following oral and intravenous administration are shown in [Figures 2 and 3](#), respectively. Selected pharmacokinetic parameters are presented in [Table 5](#). [Table 5](#) summarizes that for three oral doses of EPI, the parameters for the mean time to peak concentration (T_{max}), half-life ($T_{1/2}$) and residence time (mean residence time, MRT) were 0.37–0.42, 0.49–2.73 and 0.38–4.39 h, respectively.

Table 3 Extraction recovery and matrix effect for EPI in rat blood, urine, feces and bile ($\bar{x} \pm s$, n=5)

Items	EPI concentration added ($\mu\text{g/mL}$)	Blood (%)	Urine (%)	Feces (%)	Bile (%)
Extraction recoveries	0.078	87.40 \pm 9.94	87.83 \pm 1.28	106.67 \pm 3.09	85.79 \pm 4.34
	0.312	90.30 \pm 7.97	97.27 \pm 1.23	101.55 \pm 4.67	86.34 \pm 3.12
	1.25	92.57 \pm 3.25	101.64 \pm 2.78	93.12 \pm 5.50	88.83 \pm 1.04
Matrix effects	0.078	81.52 \pm 6.83	92.15 \pm 2.60	106.67 \pm 2.90	96.61 \pm 3.23
	0.312	90.39 \pm 3.07	108.53 \pm 0.87	101.55 \pm 4.67	98.94 \pm 1.54
	1.25	95.53 \pm 1.40	100.09 \pm 1.99	93.12 \pm 5.50	105.01 \pm 1.50

Abbreviation: EPI, epiberberine.

Table 4 Extraction recovery of α -hydroxymetoprololin and 4-hydroxytolbutamide in RLM and HLM (n=5)

Compounds	RLM			HLM		
	Concentration ($\mu\text{mol/L}$)	Recovery (%)	RSD (%)	Concentration ($\mu\text{mol/L}$)	Recovery (%)	RSD (%)
α -Hydroxymetoprololin	1.130	97.29	1.90	0.5515	101.34	1.72
	0.276	105.45	2.67	0.138	98.22	1.53
	0.069	109.89	1.81	0.0345	110.71	2.67
4-Hydroxytolbutamide	–	–	–	1.09	98.10	1.72
	–	–	–	0.2727	95.32	2.13
	–	–	–	0.0675	104.21	2.65

Abbreviations: HLM, human liver microsome; RLM, rat liver microsome; RSD, relative standard deviation.

Urinary, fecal and biliary excretion kinetics of EPI in rats

The cumulative excretion rates of EPI in rat urine and feces within 72 h and bile within 24 h following 54 or 81 mg/kg oral administration are illustrated in Figure 4. The total cumulative excretion percentages of EPI within 72 h at 54 and 81 mg/kg were 17.03% and 3.84% in urine and 25.04% and 16.83% in feces, respectively. The cumulative percentages of EPI excreted in bile at two dosages were 34.51% and 53.42% within 24 h. In addition, Figure 4 shows that the oral administration of lower doses results in a higher cumulative percentage of EPI in urine and feces.

The effect of EPI on CYP450 in RLM and HLM

The cocktail method was used to simultaneously determine the substrate content of CYP2D6, CYP3A4, CYP1A2, CYP2E1 and CYP2C9 for evaluating the activity of CYP isoforms at different concentrations of EPI in RLM and HLM. The half-maximal inhibitory concentration (IC_{50}) values (Table 6) were estimated from the inhibition curves as shown in Figure S7.

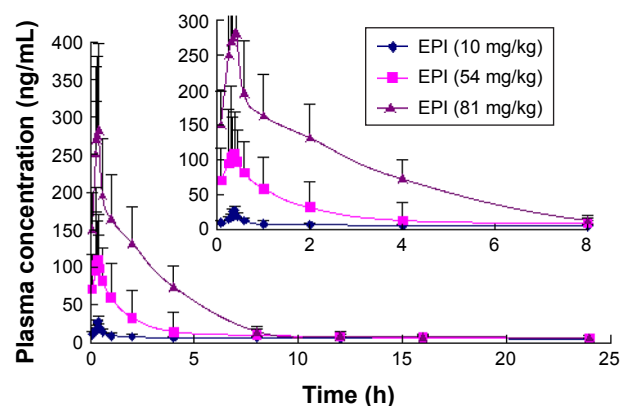


Figure 2 Mean plasma concentration–time curves of EPI after oral administration in rats (n=6).

Abbreviation: EPI, epiberberine.

The results suggest that EPI has no obvious inhibitory effect on CYP3A4, CYP1A2, CYP2E1 and CYP2C9 but exhibits significant inhibition of CYP2D6 in RLM, with an IC_{50} value of 19.45 μM . However, in HLM, EPI significantly inhibited CYP2D6, CYP2C9, CYP3A4 and CYP2E1 but not CYP1A2, and the IC_{50} values were 11.86, 8.18, 81.50 and 66.28 μM .

To further characterize the inhibition of CYP2D6 and CYP2C9 by EPI, enzyme inhibition kinetic experiments were conducted. Based on nonlinear regression analysis of the inhibition data and the Dixon plots as shown in Figures 5–7, EPI exhibited uncompetitive inhibition against CYP2D6 activity in RLM, with K_i values of 55.26 μM (Figure 5). However, in HLM, EPI exhibited uncompetitive inhibition against the activity of CYP2D6 and CYP2C9 with K_i values of 25.44 μM (Figure 6) and 5.64 μM (Figure 7).

Discussion

The LC-MS/MS methods for the bioanalysis of EPI have been previously reported.^{23,24} However, gradient elution chromatography was applied to determine multicomponents of Chinese medicines including EPI. The analysis times for one run were 20.0 and 22.0 min. It is the time-consuming analysis for pure EPI. The method with isocratic elution in

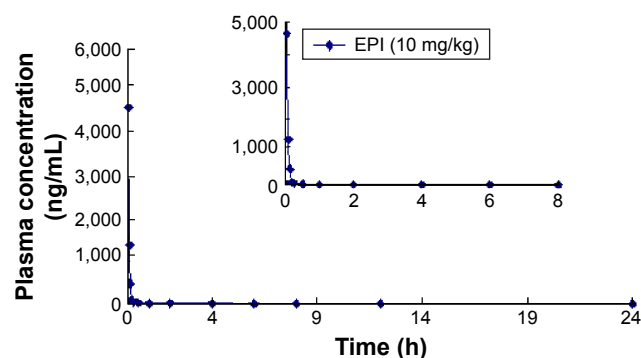


Figure 3 Mean plasma concentration–time curves of EPI after intravenous injection in rats (n=6).

Abbreviation: EPI, epiberberine.

Table 5 Pharmacokinetic parameters of EPI after oral and intravenous administration to rats and oral bioavailability ($\bar{x} \pm s, n=6$)

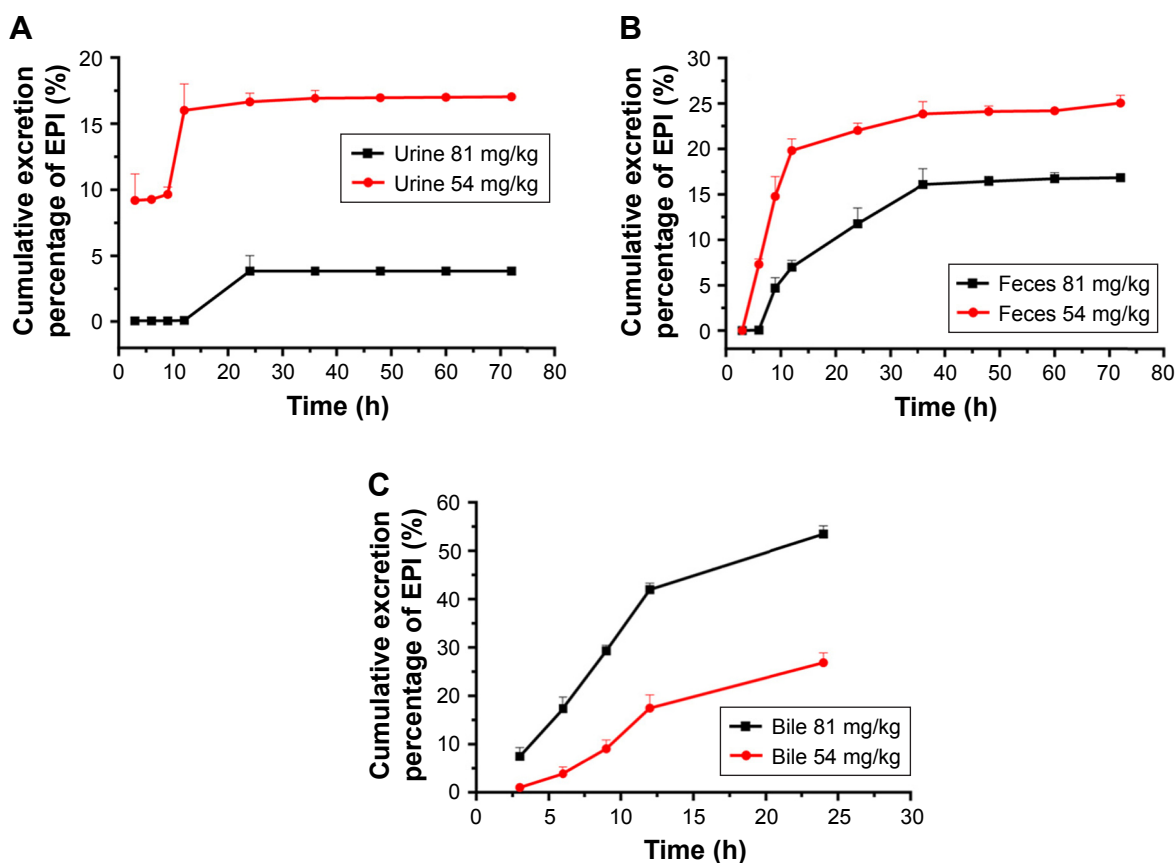
Parameters	Dosage			
	Oral (10 mg/kg)	Oral (54 mg/kg)	Oral (81 mg/kg)	Intravenous (10 mg/kg)
T_{max} (h)	0.37±0.12	0.38±0.15	0.42±0.17	–
C_{max} (ng/mL)	28.09±8.53	109.00±25.37	281.81±49.32	–
$T_{1/2}$ (h)	0.49±0.16	0.53±0.12	2.73±1.94	0.3935±0.13
AUC_{0-t} (h·ng/mL)	62.68±20.67	336.93±59.32	826.17±408.38	523.82±29.48
V_z (L)	–	–	–	0.010±0.020
CL (L/h·kg)	–	–	–	0.019±0.005
MRT_{0-t} (h)	3.87±1.34	4.13±2.01	4.39±1.78	0.38±0.32
F (%)	11.81	12.03	19.54	–
\bar{F}	14.46±4.4			–

Abbreviations: AUC, area under the curve; C_{max} , peak drug concentration in plasma; CL, clearance; EPI, epiberberine; F , bioavailability; MRT, mean residence time; $T_{1/2}$, half-life; T_{max} , the time to reach peak drug concentration in plasma; V_z , apparent volume of distribution.

this study, which consumed only 8.0 min to complete one run analysis, greatly reduced the sample analysis time and promoted analysis efficiency.

In the current experiments, we used LC-MS/MS to measure the pharmacokinetics of EPI following its oral and intravenous administration in rats. The area under the

curve (AUC_{0-t}) and C_{max} of EPI displayed significant dose dependence. In addition, EPI exhibited the properties of rapid absorption and moderate elimination with a T_{max} of 0.37–0.42 h, a $T_{1/2}$ of 0.49–0.53 (2.73) h and an MRT of 3.87–4.39 h at different doses, respectively. The result showed that the $T_{1/2}$ (2.73 h) of EPI at intragastric (ig) (81 mg/kg) dose is much longer than that at doses of ig (10 mg/kg) and ig (54 mg/kg). The possible reason may relate to physicochemical property of EPI. According to the preliminary study of our laboratory, the equilibrium solubility of EPI was 0.981 ± 0.017 mg/mL in pH 7.4 phosphate-buffered saline. The apparent oil–water partition coefficient ($\log P$) of EPI was 0.080 ± 0.032 (< 1.00) in pH 7.4 *n*-octanol–buffer system. In addition, the apparent permeability coefficients (P_{app}) of EPI in duodenum, jejunum, ileum and colon were 0.17×10^{-5} , 0.17×10^{-5} , 0.19×10^{-5} and 0.15×10^{-5} cm/s, respectively. Based on the abovementioned results, it is concluded that EPI belongs to the class of poor solubility and permeability compounds. This might lead to accumulation and retention in the gastrointestinal tract due to poor dissolution and uneven dispersion, which can then slow down the elimination rate after oral administration at a high dose. Furthermore, the pharmacokinetic parameters of EPI were

**Figure 4** Mean cumulative excretion percentage–time profiles of EPI in rat urine (A), feces (B) and bile (C) following oral administration ($n=6$).

Abbreviation: EPI, epiberberine.

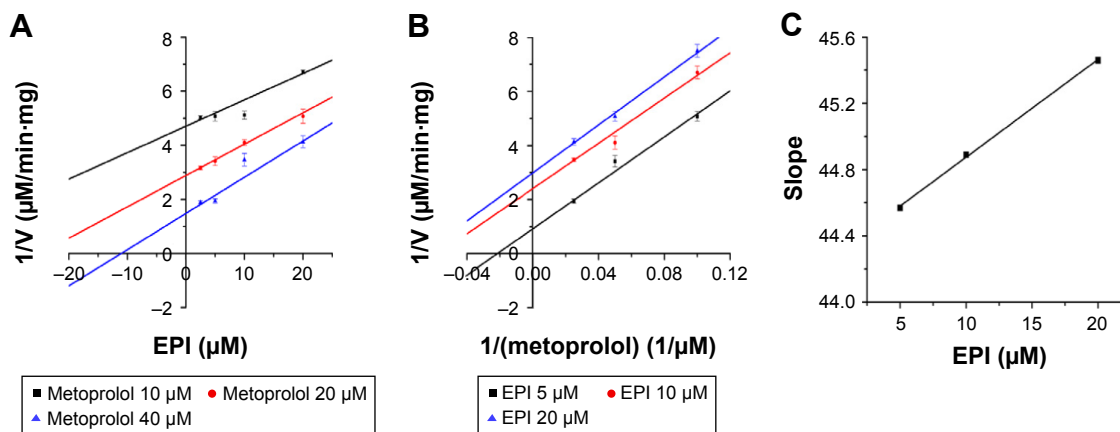
Table 6 IC₅₀ values for EPI on CYP450 isoforms in liver microsomes

Isoform	IC ₅₀ values (μM)	
	RLM	HLM
CYP1A2	>100	>100
CYP2C9	>100	8.18
CYP2D6	19.45	11.86
CYP2E1	>100	66.28
CYP3A4	>100	81.50

Abbreviations: CYP450, cytochrome P450; EPI, epiberberine; HLM, human liver microsomes; IC₅₀, half-maximal inhibitory concentration; RLM, rat liver microsomes.

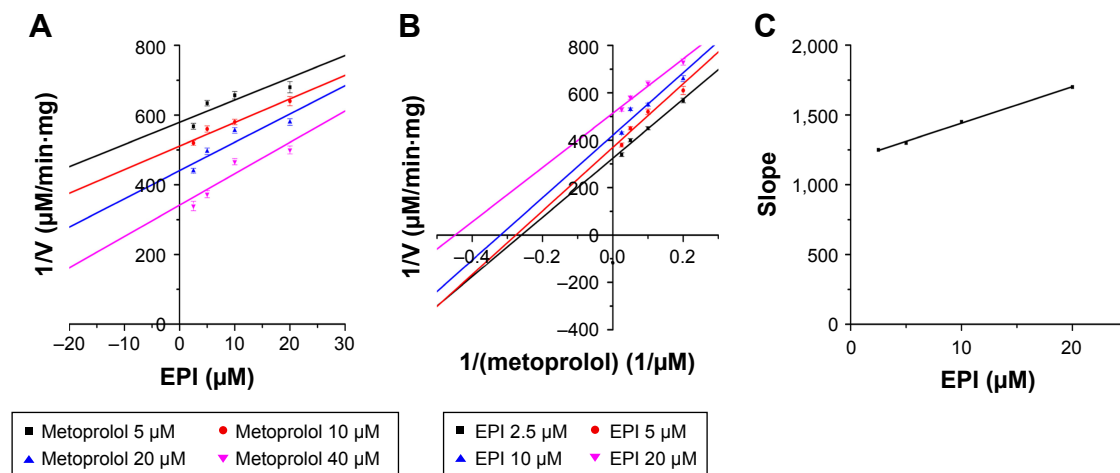
similar to those of berberine. However, the oral bioavailability of EPI (14.46%) was much higher than that of berberine (<1%).^{25,26} These results illuminate that EPI possesses better biopharmaceutical properties and is more suitable for future drug development.

We determined the fecal and biliary excretion of EPI accounts for at least 60% of the dosage administered within 24 h, while urinary excretion comprises only 16% and is even less at high dosages. This result indicated that the major route of elimination of EPI is biliary excretion, which

**Figure 5** Inhibition kinetic analysis of EPI toward CYP2D6-catalyzed metoprolol hydroxylation in RLM.

Notes: (A) Dixon plot of inhibition effect of EPI toward CYP2D6-catalyzed α -hydroxymetoprolol formation. (B) Lineweaver–Burk plot of inhibitory effect of EPI toward CYP2D6-catalyzed α -hydroxymetoprolol formation. (C) Secondary plot of slopes from Lineweaver–Burk plot versus EPI concentrations.

Abbreviations: EPI, epiberberine; RLM, rat liver microsomes.

**Figure 6** Inhibition kinetic analysis of EPI toward CYP2D6-catalyzed metoprolol hydroxylation in HLM.

Notes: (A) Dixon plot of inhibition effect of EPI toward CYP2D6-catalyzed α -hydroxymetoprolol formation. (B) Lineweaver–Burk plot of inhibitory effect of EPI toward CYP2D6-catalyzed α -hydroxymetoprolol formation. (C) Secondary plot of slopes from Lineweaver–Burk plot versus EPI concentrations.

Abbreviations: EPI, epiberberine; HLM, human liver microsomes.

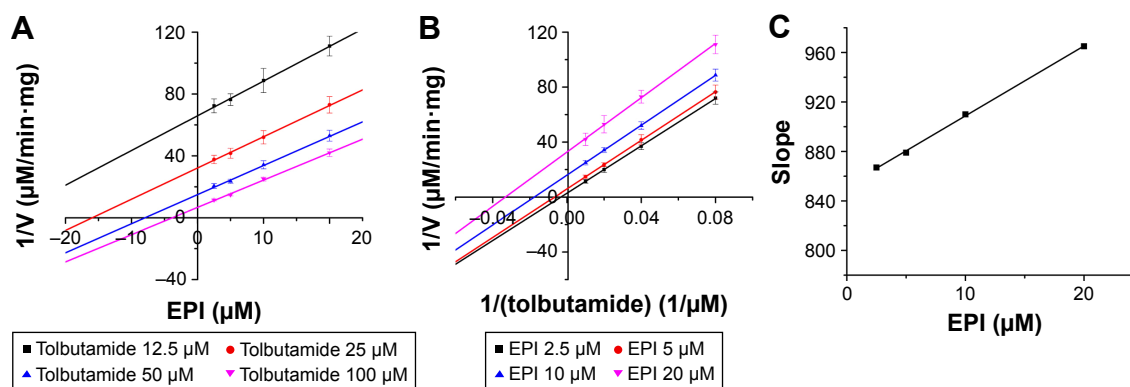


Figure 7 Inhibition kinetic analysis of EPI toward CYP2C9-catalyzed tolbutamide hydroxylation in HLM.

Notes: (A) Dixon plot of inhibition effect of EPI toward CYP2C9-catalyzed 4-hydroxytolbutamide formation. (B) Lineweaver–Burk plot of inhibitory effect of EPI toward CYP2C9-catalyzed 4-hydroxytolbutamide formation. (C) Secondary plot of slopes from Lineweaver–Burk plot versus EPI concentrations.

Abbreviations: EPI, epiberberine; HLM, human liver microsomes.

is different from the result of a previous study indicating the renal elimination of berberine as the main excretory pathway.²⁷ Previous studies have indicated that coptis alkaloids were the substrates and inhibitors of some drug transporters, such as P-glycoprotein²⁸ and OCTs.²⁹ This phenomenon could be attributed to differences between compounds in terms of lipophilicity or interaction with transporters.³⁰

Statistically, more than 90% of the drug–drug interactions were mediated by the CYP450 enzyme, of which ~70% were caused by enzyme inhibition and about 23% were induced by enzymes.^{31,32} Therefore, it is key to elucidate the mechanism of EPI inhibition on CYP450 isoforms and identification of the inhibition type. Our study showed that EPI had obvious inhibitory effects on CYP2C9 and CYP2D6, similar to previous results.³³ A comparison of the current IC_{50} and K_i values showed that the inhibitory effect of EPI on CYP2D6 and CYP2C9 was stronger in HLM than that in RLM and the inhibition was entirely noncompetitive. In addition, the C_{max} of EPI in rat was reported to be 109.0 ng/mL (0.32 μ M) at medium dose and the C_{max}/K_i was calculated to be 0.013 and 0.057 for CYP2D6 and CYP2C9, respectively. These in vitro–in vivo extrapolation (IV-IVE) results indicated low possibility of in vivo inhibition. However, many factors, such as processing of herbs and environmental complexity, might influence the IV-IVE results that could possibly strengthen the in vivo inhibition effect.³⁴ Based on the results of this study and previous results for HLM, combining EPI or Rhizoma Coptidis with CYP2D6 or CYP2C9 substrates might result in clinical metabolism-mediated EPI–drug interactions.

Conclusion

As a coptis alkaloid, EPI has a shorter $T_{1/2}$ and higher oral bioavailability in rats than its isomer berberine. EPI is

excreted primarily through bile and feces and eliminated predominantly by the kidneys; in addition, EPI may exit via enterohepatic circulation. In RLM and HLM, EPI showed different degrees of CYP enzyme inhibition.

Acknowledgments

This work was financially supported by the National Nature Science Foundation of China (81673680, 81274177). We thank Dr Ma for revising the article critically for important intellectual content.

Disclosure

The authors report no conflicts of interest in this work.

References

- Jiang XF, Wang LJ, Li XG, Zhao ZQ, Zhu JY. Isolation of jatrorrhizine and epiberberine in *Coptis Chinensis* and their *in vitro* hypoglycemic effect. *Guizhou Agric Sci*. 2011;39(9):44–46.
- Ma H, Hu YR, Zou ZY, Feng M, Ye XL, Li XG. Antihyperglycemia and antihyperlipidemia effect of protoberberine alkaloids from *Rhizoma Coptidis* in HepG2 Cell and diabetic KK-Ay mice. *Drug Dev Res*. 2016;77(4):163–170.
- Zou ZY, Hu YR, Ma H, Feng M, Li XG, Ye XL. Epiberberine reduces serum cholesterol in diet-induced dyslipidemia Syrian golden hamsters via network pathways involving cholesterol metabolism. *Eur J Pharmacol*. 2016;774:1–9.
- Choi JS, Kim JH, Ali MY, et al. Anti-adipogenic effect of epiberberine is mediated by regulation of the Raf/MEK1/2/ERK1/2 and AMPK α /Akt pathways. *Arch Pharm Res*. 2015;38(12):2153–2162.
- He K, Kou SM, Zou ZY, et al. Hypolipidemic effects of alkaloids from *Rhizoma Coptidis* in diet-induced hyperlipidemic hamsters. *Planta Med*. 2016;82(8):690–697.
- Kou S, Han B, Wang Y, et al. Synergistic cholesterol-lowering effects of main alkaloids from *Rhizoma Coptidis* in HepG2 cells and hypercholesterolemia hamsters. *Life Sci*. 2016;151:50–60.
- Jung HA, Yoon NY, Bae HJ, Min BS, Choi JS. Inhibitory activities of the alkaloids from *Coptidis Rhizoma* against aldose reductase. *Arch Pharm Res*. 2008;31(11):1405–1412.
- Wang JL, Fang DC. Effect of epiberberine on alpha-adrenoceptors. *Acta Pharm Sin*. 1990;25(4):289–292.

9. Choi JS, Ali MY, Jung HA, Oh SH, Choi RJ, Kim EJ. Protein tyrosine phosphatase 1B inhibitory activity of alkaloids from *Rhizoma Coptidis* and their molecular docking studies. *J Ethnopharmacol*. 2015; 171(1):28–36.
10. Ge AH, Bai Y, Li J, et al. An activity-integrated strategy involving ultra-high-performance liquid chromatography/quadrupole-time-of-flight mass spectrometry and fraction collector for rapid screening and characterization of the α -glucosidase inhibitors in *Coptis chinensis* Franch. (Huanglian). *J Pharm Biomed Anal*. 2014;100:79–87.
11. Chen HY, Ye XL, Cui XL, et al. Cytotoxicity and antihyperglycemic effect of minor constituents from *Rhizoma Coptidis* in HepG2 cells. *Fitoterapia*. 2012;83(1):67–73.
12. Kwon OJ, Kim MY, Shin SH, et al. Antioxidant and anti-inflammatory effects of *Rhei Rhizoma* and *Coptidis Rhizoma* mixture on Reflux Esophagitis in rats. *Evid Based Complement Alternat Med*. 2016; 2016(6):1–13.
13. Li JY, Wang XB, Luo JG, Kong YL. Seasonal variation of alkaloid contents and anti-inflammatory activity of *Rhizoma Coptidis* based on fingerprints combined with chemometrics methods. *J Chromatogr Sci*. 2015;53(7):1131–1139.
14. Jung HA, Min BS, Yokozawa T, Lee JH, Kim YS, Choi JS. Anti-Alzheimer and antioxidant activities of *Coptidis Rhizoma* alkaloids. *Biol Pharm Bull*. 2009;32(8):1433–1438.
15. Tan L, Li C, Chen H, et al. Epiberberine, a natural protoberberine alkaloid, inhibits urease of *Helicobacter pylori* and jack bean: susceptibility and mechanism. *Eur J Pharm Sci*. 2017;110:77–86.
16. Li L, Sun S, Weng Y, et al. Interaction of six protoberberine alkaloids with human organic cation transporters 1, 2 and 3. *Xenobiotica*. 2016;46(2):175–183.
17. Han YL, Yu HL, Li D, et al. In vitro inhibition of Huanglian [*Rhizoma coptidis* (L.)] and its six active alkaloids on six cytochrome P450 isoforms in human liver microsomes. *Phytother Res*. 2011;25(11):1660–1665.
18. Zhang L, Liu H, Shao Y, et al. Selective lighting up of epiberberine alkaloid fluorescence by fluorophore-switching aptamer and stoichiometric targeting of human telomeric DNA G-quadruplex multimer. *Anal Chem*. 2015;87(1):730–737.
19. Yi J, Ye X, Wang D, et al. Safety evaluation of main alkaloids from *Rhizoma Coptidis*. *J Ethnopharmacol*. 2013;145(1):303–310.
20. Luo JY, Yan D, Yang MH. Study of the anti-MRSA activity of *Rhizoma coptidis* by chemical fingerprinting and broth microdilution methods. *Chin J Nat Med*. 2014;12(5):393–400.
21. Wei LY, Zhang YJ, Wei BH, et al. Effect of comparability of *Coptis chinensis* and *Scutellaria baicalensis* on five sub enzymatic activities of liver microsomes in rats. *Chin J Chin Mater Med*. 2013;38(9): 1426–1429.
22. Guo S, Liu Y, Lin Z, Tai S, Yin S, Liu G. Effects of eleutheroside B and eleutheroside E on activity of cytochrome P450 in rat liver microsomes. *BMC Complement Altern Med*. 2014;14(1):1–7.
23. Wu Y, Liu RJ, Gu P, et al. Highly sensitive method for simultaneous determination of nine alkaloids of Shuanghua Baihe tablets in human plasma by LC-MS/MS and its application. *J Chromatogr*. 2015;1007: 81–92.
24. Cheng ML, Liu RJ, Wu Y, et al. LC-MS/MS determination and urinary excretion study of seven alkaloids in healthy Chinese volunteers after oral administration of Shuanghua Baihe tablets. *J Pharm Biomed Anal*. 2015;118:89–95.
25. Liu YT, Hao HP, Xie HG, et al. Extensive intestinal first-pass elimination and predominant hepatic distribution of berberine explain its low plasma levels in rats. *Drug Metab Dispos*. 2010;38(10):1779–1784.
26. Kheir MM, Wang Y, Hua L, et al. Acute toxicity of berberine and its correlation with the blood concentration in mice. *Food Chem Toxicol*. 2010;48(4):1105–1110.
27. Ma JY, Feng R, Tan XS, et al. Excretion of berberine and its metabolites in oral administration in rats. *J Pharm Sci*. 2013;102(11):4181–4192.
28. Pan GY, Wang GJ, Liu XD, Fawcett JP, Xie YY. The involvement of P-glycoprotein in berberine absorption. *Pharmacol Toxicol*. 2002; 91(4):193–197.
29. Sun S, Wang K, Lei H, et al. Inhibition of organic cation transporter 2 and 3 may be involved in the mechanism of the antidepressant-like action of berberine. *Prog Neuropsychopharmacol Biol Psychiatry*. 2014; 49(1437):1–6.
30. Yu S, Yu Y, Liu L, et al. Increased plasma exposures of five protoberberine alkaloids from *Coptidis Rhizoma* in streptozotocin-induced diabetic rats: is P-GP involved? *Planta Med*. 2010;76(9): 876–881.
31. Pergolizzi JV Jr, Labhsetwar SA, Puenpatom RA, Joo S, Ben-Joseph RH, Summers KH. Prevalence of exposure to potential CYP450 pharmacokinetic drug-drug interactions among patients with chronic low back pain taking opioids. *Pain Pract*. 2011;11(3):230–239.
32. Liu Y, Flynn TJ, Xia M, Wiesenfeld PL, Ferguson MS. Evaluation of CYP3A4 inhibition and hepatotoxicity using DMSO-treated human hepatoma HuH-7 cells. *Cell Biol Toxicol*. 2015;31(4–5):221–230.
33. Yang XY, Ye J, Sun GX, et al. Identification of metabolites of epiberberine in rat liver microsomes and its inhibiting effects on CYP2D6. *Chin J Chin Mater Med*. 2014;39(19):3855–3859.
34. Lu H, Fang ZZ, Cao YF, et al. Isoliquiritigenin showed strong inhibitory effects towards multiple UDP-glucuronosyltransferase (UGT) isoform-catalyzed 4-methylumbelliferone (4-MU) glucuronidation. *Fitoterapia*. 2013;84(1):208–212.

Drug Design, Development and Therapy

Publish your work in this journal

Drug Design, Development and Therapy is an international, peer-reviewed open-access journal that spans the spectrum of drug design and development through to clinical applications. Clinical outcomes, patient safety, and programs for the development and effective, safe, and sustained use of medicines are the features of the journal, which

Submit your manuscript here: <http://www.dovepress.com/drug-design-development-and-therapy-journal>

Dovepress

has also been accepted for indexing on PubMed Central. The manuscript management system is completely online and includes a very quick and fair peer-review system, which is all easy to use. Visit <http://www.dovepress.com/testimonials.php> to read real quotes from published authors.