

# Correspondence: Strongly-driven Re + CO<sub>2</sub> redox reaction at high-pressure and high-temperature

D. Santamaria-Perez<sup>1,2</sup>, C. McGuire<sup>1</sup>, A. Makhlu<sup>1</sup>, A. Kavner<sup>1</sup>, R. Chuliá-Jordan<sup>2</sup>, J.L. Jorda<sup>3</sup>, F. Rey<sup>3</sup>, J. Pellicer-Porres<sup>2</sup>, D. Martinez-García<sup>2</sup>, P. Rodriguez-Hernández<sup>4</sup> & A. Muñoz<sup>4</sup>

*Nature Communications* 7:13647 doi: 10.1038/ncomms13647 (2016); Published 29 Nov 2016

The discovery of non-molecular carbon dioxide phases under high pressure and temperature conditions with carbon tetrahedrally coordinated by oxygen atoms<sup>1–3</sup> has shown that the high-density phase diagram of this important substance presents remarkable analogies with those of other group IV oxides. These results have triggered a variety of experimental studies aiming to explore the high-pressure high-temperature phase diagram of the CO<sub>2</sub>–SiO<sub>2</sub> system, with a goal to find potentially stable compounds. Thus, although these oxides were traditionally perceived as being incompatible due to distinctive chemical behaviour, recent high-pressure high-temperature experiments have radically altered this view<sup>4,5</sup>.

In a recent paper, Santoro *et al.*<sup>5</sup> reported the formation of a Si<sub>0.4</sub>C<sub>0.6</sub>O<sub>2</sub> solid solution with a cristobalite-type structure after heating a mixture of a CO<sub>2</sub>-filled microporous silica polymorph, silicalite and CO<sub>2</sub> in excess of 4,000 K while compressed at 16–22 GPa. We argue here that the authors could have misidentified this phase since the metallic rhenium observed in their X-ray diffraction patterns would have reacted with CO<sub>2</sub> at 1,600 K to form β-ReO<sub>2</sub> rhenium oxide.

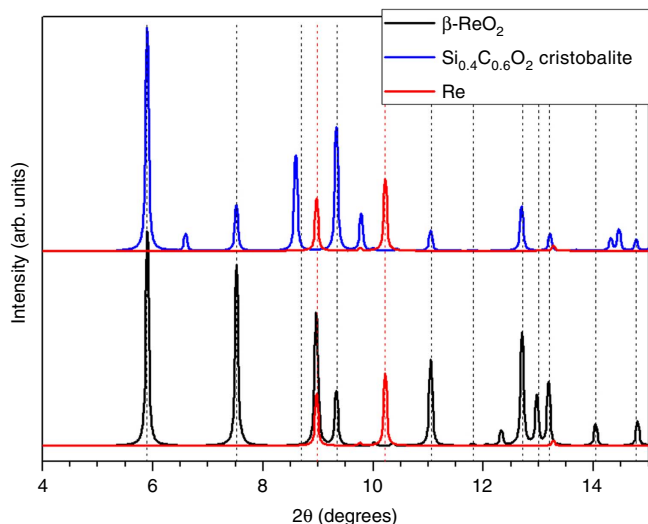
In ref. 5, the authors synthesized the crystalline Si<sub>0.4</sub>C<sub>0.6</sub>O<sub>2</sub> solid solution at pressures corresponding to a compromise between the respective stabilities of 3- and 4-fold coordination in CO<sub>2</sub> ( $P > 40$  GPa) and 4- and 6-fold coordination in SiO<sub>2</sub> ( $P > 7$  GPa), and temperatures where both pure SiO<sub>2</sub> and CO<sub>2</sub> are liquid. For these experiments, the SiO<sub>2</sub>:CO<sub>2</sub> mixture located in sample chamber ~80 μm in diameter was heated with a CO<sub>2</sub> laser ( $\lambda = 10.6$  μm) with a beam focal spot of ~30–40 μm, and the resulting compound was sampled using synchrotron X-ray radiation with a nominal 2 μm spot size. Figure 2 of their paper shows the X-ray diffraction pattern at 7 GPa and room temperature, where the most intense diffraction peaks correspond to the new phase and Re from the gasket. Peaks of the new phase were indexed using a tetragonal unit cell and the systematic absences were consistent with the P4<sub>1</sub>2<sub>1</sub>2 space group, leading the authors to assign the α-cristobalite structure. The reported X-ray diffraction intensities do not correspond to randomly oriented powder so only peak positions and not relative

intensities were used to infer the structure. The average formula of Si<sub>0.4</sub>C<sub>0.6</sub>O<sub>2</sub> was consistent with X-ray diffraction and Raman spectroscopy results. This solid solution based on [CO<sub>4</sub>] tetrahedra was stable after quenching P-T down to ambient conditions.

We have recently studied the high-pressure chemistry of the CO<sub>2</sub>–SiO<sub>2</sub> system up to 50 GPa and 2,400 K using double-sided laser heating in diamond-anvil cells, while characterizing the samples *in situ* by means of synchrotron-based X-ray diffraction. We performed eight independent runs of samples consisting of gas-loaded CO<sub>2</sub>, a CO<sub>2</sub>-filled zeolite (ITQ-29 (ref. 6) or silicalite-1F (ref. 7)) and a metallic heater, which acts as absorber of the diode pumped 1.064 μm laser. Heaters were pre-compressed pellets or thin coarse-grained disks of one of the following metals: Pt, Re or Au. After every heating run, we characterized the sample at high pressures and ambient temperatures performing a two-dimensional X-ray diffraction map of the pressure chamber traversing the laser-created hotspot.

Our results show that no chemical reaction occurs in the sample chamber at these high pressures and temperatures when gold or platinum were used as internal thermal couplers, neither between CO<sub>2</sub> and SiO<sub>2</sub>, nor between these materials and the metallic heater. In these experiments, CO<sub>2</sub>-filled silica progressively amorphizes with pressure at ambient temperature, but crystalline Bragg peaks endures up to 24 GPa. Upon heating, at 1,300 K, the zeolites have transformed into the thermodynamically stable phase of SiO<sub>2</sub> at the corresponding pressure, quartz for  $P < 8$  GPa and stishovite for  $P > 8$  GPa. Therefore, the supposed advantage of using zeolites to maximize surface chemical reactivity due to the large effective interaction area between the framework SiO<sub>2</sub> and the confined CO<sub>2</sub> is restricted to temperatures below 1,300 K. Our data show a progressive transformation from the zeolite, silicalite or ITQ-29 to stishovite above 16 GPa with increasing temperature. No other phase was identified in the scanned 300–1,300 K temperature gradient. CO<sub>2</sub>-I, -II, -III, -IV and -V phases were observed at different P-T conditions, the latter one being metastable during most of the downstroke pressure process.

<sup>1</sup>Earth, Planetary and Space Sciences Department, University of California Los Angeles, Los Angeles, California 951567, USA. <sup>2</sup>MALTA-Departamento de Física Aplicada-ICMUV, Universitat de València, 46100 Valencia, Spain. <sup>3</sup>Instituto de Tecnología Química, Universitat Politècnica de València-CSIC, 46022 Valencia, Spain. <sup>4</sup>MALTA-Departamento de Física, Instituto Univ. de Materiales y Nanotecnología, Universidad de La Laguna, 38207 La Laguna, Tenerife, Spain. Correspondence and requests for materials should be addressed to D.S.-P. (email: David.Santamaria@uv.es).

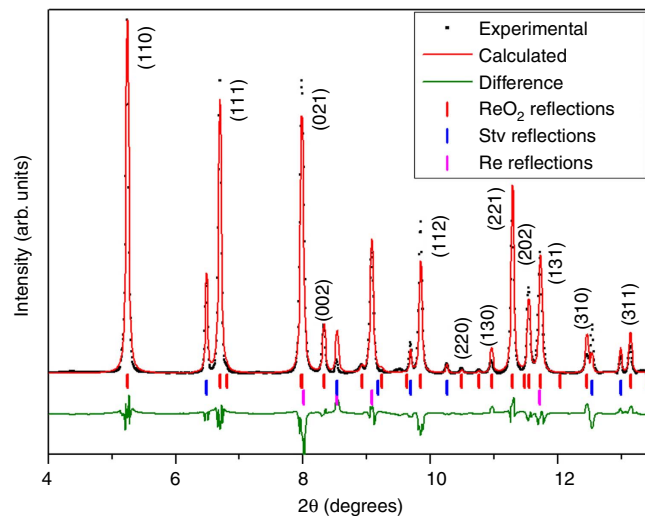


**Figure 1 | Calculated X-ray diffraction profiles of both the cristobalite  $\text{Si}_{0.4}\text{C}_{0.6}\text{O}_2$  solid solution and the  $\text{ReO}_2$  phases.** Patterns were calculated to correspond to a pressure of 7 GPa, and  $\lambda = 0.3738 \text{ \AA}$ . The calculated diffraction pattern for  $\alpha$ -cristobalite  $\text{Si}_{0.4}\text{C}_{0.6}\text{O}_2$  is depicted in blue (lattice dimensions from ref. 5) and the calculated pattern for Pbcn  $\beta$ - $\text{ReO}_2$  is represented in black ( $a = 4.7735 \text{ \AA}$ ,  $b = 5.6047 \text{ \AA}$  and  $c = 4.5755 \text{ \AA}$ ). Calculated Re peaks are shown in red. Vertical dashed lines correspond to the positions of the X-ray diffraction peaks observed at 7 GPa by Santoro *et al.* (data obtained from a digitized version of Fig. 2 of ref. 5).

When Re was used as a heater, a new phase was synthesized at pressures of 8 and 24 GPa and temperatures of 1,500–1,600 K. A more in-depth manuscript on the reactivity of transition metals and  $\text{CO}_2$  has been recently published<sup>8</sup>. This new phase coexists with stishovite, and it is present up to 48 GPa and also during the entire decompression process down to ambient conditions. Bragg peaks of the new phase are located at  $d$ -spacings similar to those of the cristobalite-structured  $\text{Si}_{0.4}\text{C}_{0.6}\text{O}_2$  compound reported by Santoro *et al.*<sup>5</sup> This is illustrated in Fig. 1, where the theoretically calculated X-ray diffraction patterns of Santoro's hypothesized  $\alpha$ -cristobalite  $\text{Si}_{0.4}\text{C}_{0.6}\text{O}_2$  and the new phase we observed are depicted together. However, a careful indexing of 16 peaks suggests they are better fit by an orthorhombic structure instead of the tetragonal space group of the reported cristobalite structure. The diffraction peaks of our recovered sample were indexed using an orthorhombic cell with lattice parameters:  $a = 4.809(2)$ ,  $b = 5.640(7)$  and  $c = 4.599(2) \text{ \AA}$ , and a unit-cell volume of  $124.75(12) \text{ \AA}^3$ . This structure is consistent with the Pbcn structure for  $\beta$ - $\text{ReO}_2$  reported by Magneli<sup>9</sup>.

The Rietveld refinement of X-ray diffraction pattern of our recovered sample shows that the Bragg peak intensities, systematic absences and unit-cell dimensions all show excellent agreement with those predicted theoretically for the Pbcn  $\beta$ - $\text{ReO}_2$  structure (Fig. 2)<sup>8</sup>.

An additional experiment confirming the chemical reactivity between  $\text{CO}_2$  and Re was performed at 15 GPa, using only Re metal loaded in a diamond-anvil cell sample chamber with  $\text{CO}_2$ . This reaction is accompanied by a significant drop in pressure. Additionally, Raman spectra of experiments where only these two materials were loaded in the sample show, at 21 GPa and room temperature, a broad band centred at  $1,671 \text{ cm}^{-1}$ , which corresponds to vibrations in the graphene planes and is often called the 'G band'. Therefore, we hypothesize that both we and Santoro *et al.* are observing the reaction:  $\text{Re} + \text{CO}_2 = \text{ReO}_2 + \text{C}$  (reduced).



**Figure 2 | Rietveld refinement of the X-ray diffraction pattern at ambient conditions.** This X-ray diffraction pattern corresponds to the recovered  $\text{CO}_2:\text{SiO}_2:\text{Re}$  sample after heating to 2,000 K and compressing to 48 GPa ( $\lambda = 0.3344 \text{ \AA}$ ). Reflections correspond to  $\beta$ - $\text{ReO}_2$ , Re and  $\text{SiO}_2$  stishovite. Experimental data are depicted as scattered black squares, and calculated and full difference X-ray diffraction profiles are represented as red and green lines, respectively. Refined lattice parameters are in the text, refined atomic coordinates are Re (4c: 0, 0.113(1), 0.25) and O (8d: 0.237(3), 0.362(2), 0.397(2)).

Our experiments reproduced the pressure conditions but fall short of achieving the high temperature conditions of Santoro *et al.*<sup>5</sup> in the  $\text{SiO}_2:\text{CO}_2$  system (2,200 K versus 4,000 K). However, a close inspection of the published X-ray diffraction pattern of the hypothetically synthesized cristobalite  $\text{Si}_{0.4}\text{C}_{0.6}\text{O}_2$  solid solution shows that the positions and intensities of the Bragg peaks can be explained by  $\beta$ - $\text{ReO}_2$  structure. Note that the authors only performed a LeBail fitting of the pattern and that not all the peak positions were accurately fitted (see Figs 1 and 2a in ref. 5). For instance, the peak at  $13.01^\circ$  cannot be explained using the  $\alpha$ -cristobalite model, whereas it corresponds to the (202) reflection of  $\beta$ - $\text{ReO}_2$ . Moreover, theoretically predicted reflections of significant intensity by a  $\alpha$ -cristobalite model, such as (110) at  $6.60^\circ$ , (112) at  $9.79^\circ$ , (203) at  $14.32^\circ$  and (004) at  $14.47^\circ$ , were not observed, or the (102) at  $8.60^\circ$ , which is considerably shifted. In summary, the formation of rhenium oxide in their experiments is strongly supported by the observation of Re gasket peaks in their experimental X-ray diffraction pattern. We also note that as a high Z material, even a small amount of  $\text{ReO}_2$  may generate significant intensities on an X-ray diffraction pattern.

Our results demonstrate a strongly driven carbon dioxide reduction reaction in the presence of Re metal at high pressures and temperatures. It is important to stress that the experimental results reported here do not explain the Raman spectrum reported by Santoro *et al.*<sup>5</sup> for the  $\text{Si}_{0.4}\text{C}_{0.6}\text{O}_2$  solid solution after temperature quenching.  $\beta$ - $\text{ReO}_2$  Raman scattering is largely different<sup>8</sup>. The present results, however, raise substantial doubts on the phase assignment of the high-pressure high-temperature silicon carbon oxide phase.

## References

1. Yoo, C. S. *et al.* Crystal structure of carbon dioxide at high pressure: "superhard" polymeric carbon dioxide. *Phys. Rev. Lett.* **83**, 5527–5530 (1999).
2. Santoro, M. *et al.* Partially collapsed cristobalite structure in the non molecular phase V in  $\text{CO}_2$ . *Proc. Natl Acad. Sci.* **109**, 5176–5179 (2012).
3. Datchi, F., Mallick, B., Salamat, A. & Ninet, S. Structure of polymeric carbon dioxide  $\text{CO}_2$ -V. *Phys. Rev. Lett.* **108**, 125701 (2012).

- Santoro, M. *et al.* Silicon carbonate phase formed from carbon dioxide and silica under pressure. *Proc. Natl Acad. Sci.* **108**, 7689–7692 (2011).
- Santoro, M. *et al.* Carbon enters silica forming a cristobalite-type CO<sub>2</sub>SiO<sub>2</sub> solid solution. *Nat. Commun.* **5**, 3761 (2014).
- Corma, A., Rey, F., Rius, J., Sabater, M. J. & Valencia, S. Supramolecular self-assembled molecules as organic directing agent for synthesis of zeolites. *Nature* **431**, 287–290 (2004).
- Guth, J.-L., Kessler, H. & Wey, R. in *Studies in Surface Science and Catalysis* Vol. 28 (eds Murakami, Y., Iijima, A. & Ward, J. W.) 121 (Kodansha-Elsevier, 1986).
- Santamaria-Perez, D. *et al.* Exploring the chemical reactivity between carbon dioxide and three transition metals (Au, Pt, and Re) at high-pressure high-temperature conditions. *Inorg. Chem.* **55**, 10793–10799 (2016).
- Magneli, A. Studies on rhenium oxides. *Acta Chem. Scand.* **11**, 28–33 (1957).

## Acknowledgements

This work was supported by the Marie Curie Action PEOF-GA-2013-622439. Financial support from Spanish government MEC under Grant No. MAT2013-46649-C4-1/3-P is also acknowledged. Supercomputer time has been provided by the Red Española de Supercomputación (RES) and the MALTA cluster. A.K. acknowledges grant support from NSF-EAR 1522560. Portions of this work were performed at GeoSoilEnviroCARS (Sector 13), Advanced Photon Source (APS), Argonne National Laboratory. GeoSoilEnviroCARS is supported by the National Science Foundation—Earth Sciences (EAR-1128799) and Department of Energy – GeoSciences (DE-FG02-94ER14466). This research used resources of the Advanced Photon Source, a U.S. Department of Energy (DOE) Office of Science User Facility operated for the DOE Office of Science by Argonne National Laboratory under Contract No. DE-AC02-06CH11357. Use of the COMPRES-GSECARS gas loading system was supported by COMPRES under NSF Cooperative Agreement EAR 11-57758. D.S.-P. also acknowledges the Ramon y Cajal fellowship programme for financial support.

## Author contributions

D.S.P., C.McG., A.M. and A.K. carried out the synchrotron-based X-ray diffraction under pressure experiments; D.S.P. and R.C.J. analysed the crystal structures and diffraction patterns; F.R. and J.L.J. synthesized pure SiO<sub>2</sub> zeolites; J.P.P. and D.M.G. carried our Raman measurements; A.M. and P.R.H. conducted the DFT calculations; D.S.P. wrote the manuscript but all authors discussed the experimental and theoretical results.

## Additional information

**Competing financial interests:** The authors declare no competing financial interests.

**Reprints and permission** information is available online at <http://npg.nature.com/reprintsandpermissions/>

**How to cite this article:** Santamaria-Perez, D. *et al.* Correspondence: Strongly-driven Re + CO<sub>2</sub> redox reaction at high-pressure and high-temperature. *Nat. Commun.* **7**, 13647 doi: 10.1038/ncomms13647 (2016).

**Publisher's note:** Springer Nature remains neutral with regard to jurisdictional claims in published maps and institutional affiliations.



This work is licensed under a Creative Commons Attribution 4.0 International License. The images or other third party material in this article are included in the article's Creative Commons license, unless indicated otherwise in the credit line; if the material is not included under the Creative Commons license, users will need to obtain permission from the license holder to reproduce the material. To view a copy of this license, visit <http://creativecommons.org/licenses/by/4.0/>

© The Author(s) 2016