

Sex differences in long-term outcomes of coronary patients treated with drug-eluting stents at a tertiary medical center

Nicolas W Shammam

Gail A Shammam

Michael Jerin

Peter Sharis

Midwest Cardiovascular Research
Foundation, Davenport, IA, USA

Background: Limited data exist on contemporary sex-related differences in long-term outcomes of coronary patients receiving drug-eluting stents. In this study we evaluate differences for males (M) and females (F) in 2-year target lesion failure (TLF) in an unselected consecutive series of patients treated with everolimus-eluting stents (EES) and paclitaxel-eluting stents (PES) at a tertiary medical center.

Methods: Data on 348 consecutive patients (M 221, F 127) stented with EES and PES were retrospectively analyzed. The primary end point of the study was to compare sex-related outcomes in TLF, defined as the combined end point of cardiac death, nonfatal myocardial infarction, and target lesion revascularization (TLR). Secondary end points included TLR, target vessel failure, target vessel revascularization, acute stent thrombosis as defined by the Academic Research Consortium, and cardiac death. The cineangiograms of the first consecutive 162 patients (M 105, F 57) were independently reviewed by a cardiologist blinded to clinical outcome, and SYNTAX scoring was performed. Follow-up was achieved using medical records and/or phone calls and was censored at 2 years. Descriptive analysis was performed on all variables. Univariate analysis compared the M and F cohorts. Multivariate analysis using Cox regression was performed to determine independent predictors of TLF with time, including sex as an independent variable in the model.

Results: M had more prior percutaneous coronary interventions and restenotic lesions and a higher prevalence of smoking. They also had longer length of disease and received more stents than F. F were older and had a higher prevalence of prior stroke. Angiographic complexity was not statistically different between the two groups, as judged by SYNTAX scoring (M 20.8 ± 13.8 , F 19.7 ± 13.9 , $P=0.650$). At 2-year follow-up, TLF was 27.4% and 24.8% ($P=0.614$) with no statistical difference between TLR (23.3% versus [vs] 21.6%), cardiac death (2.8% vs 3.2%), and definite and probable stent thrombosis (2.3% vs 0.0%) in M and F, respectively. Cox regression analysis using backward elimination showed that the number of stents per patient was the only independent predictor of TLF with time (hazard ratio 1.201, 95% confidence interval 1.126–1.280, $P=0.001$).

Conclusion: In this cohort of patients receiving EES and PES, M and F did not have statistically different outcomes at 2-year follow-up, consistent with recent reports in the current era of percutaneous coronary interventions.

Keywords: coronary stent, drug-eluting stent, outcome, target lesion revascularization, sex, woman, man, stent thrombosis

Correspondence: Nicolas W Shammam
Research Director, Midwest
Cardiovascular Research Foundation,
1622 E Lombard Street, Davenport,
IA 52803, USA
Tel +1 563 324 2992
Fax +1 563 449 8446
Email shammam@mchsi.com

Introduction

Prior to the era of drug-eluting stents (DES), several reports indicated that female sex is an independent predictor of adverse events after percutaneous coronary interventions (PCIs).^{1–3} This difference between males (M) and females (F) in long-term outcomes

seem to have diminished recently. Several reports suggest that female sex, after adjusting for various clinical and procedural variables, does not appear to independently predict adverse late outcome after PCI.^{4–16} To the contrary, other reports have continued to indicate that female sex predicts an increased risk of major adverse events and target lesion revascularization (TLR), even in the era of modern PCIs.^{17–19}

In this report we examine our own data for differences between M and F in target lesion failure (TLF) in an unselected consecutive series of patients treated with everolimus-eluting stents (EES) and paclitaxel-eluting stents (PES) and followed for at least 2 years at our medical center, the Genesis Medical Center, Davenport, IA, USA.

Methods

Unselected consecutive patients treated with the PES Taxus® Liberte® (Boston Scientific, Natick, MA, USA) (n=159) and the EES Xience V® (or Promus®) (Abbott Laboratories, Abbott Park, IL, USA) (n=189) were retrospectively recruited from a single center from October 2008 to September 2009. An earlier manuscript has been published from this data by our group.²⁰ As we have previously described, “Patients who received mixed stents during the index procedure or bypass graft treatment were excluded. The choice of the drug eluting stent was

left to an individual operator.” All patients were treated using a femoral approach. Intravascular ultrasound was not used to verify stent apposition and expansion. The majority of patients received unfractionated heparin (82.5%) and the remaining bivalirudin (17.5%) during PCI. The use of glycoprotein IIb/IIIa inhibitors (eptifibatide and abciximab) was in <5% of patients. Demographics, clinical, procedural, and angiographic variables are shown in Tables 1 and 2. Angiographic variables (including ejection fraction from left ventriculography) were obtained by an independent blinded review of the angiograms to patients’ clinical variables and outcomes. Treated length included the entire stented segment rather than just lesion length. SYNTAX scoring was conducted on the first 162 patients (M 105, F 57) (46% of patients and consecutively) with statistically near identical results. Therefore, scoring the remaining patients would not likely have altered this conclusion.

Complete follow up on all patients was achieved at 2 years from index procedure using phone calls, medical records or both. The Institutional Review Board at our medical center approved the protocol. A verbal consent was obtained from patients by a phone call after they have been mailed a letter describing the protocol. A standardized script was used to obtain history from patients. “Patients who died during the follow up period had their death certificates retrieved to verify the cause of death.”²⁰

Table 1 Demographic and clinical variables

Variable	n	Female	n	Male	P-value
Age (years)*	127	68.6±12.5	219	65.0±11.1	0.007
Body mass index (kg/m ²)*	125	30.4±7	220	31.0±6.6	0.469
NYHA class for failure on presentation (%)	126		220		NA
No dyspnea		79.4		80.9	
Class I: dyspnea with high level of activity		5.6		7.7	
Class II: dyspnea with regular level of activity		11.9		8.2	
Class III: dyspnea with minimal level of activity		1.6		2.3	
Class IV: dyspnea at rest		1.6		0.9	
Prior percutaneous coronary intervention (%)	127	59.8	220	76.4	0.001
Prior coronary artery bypass surgery (%)	127	21.3	220	23.1	0.790
Previous myocardial infarction (%)	127	34.6	221	37.1	0.728
Family history of premature CAD (%)	126	42.9	216	39.8	0.549
Renal failure (creatinine ≥2.0 at baseline) (%)	125	8	219	7.8	1.000
Chronic lung disease (%)	127	14.2	221	14.5	1.000
Peripheral vascular disease (%)	127	11	221	14.5	0.413
Hypertension (%)	127	81.1	221	82.4	0.774
Cerebrovascular disease (%)	126	7.1	221	1.8	0.017
Hyperlipidemia (%)	127	94.3	221	89.1	0.240
Smoking history (%)	127	48.8	220	71.4	0.001
Diabetes mellitus (%)	127	36.2	220	37.7	0.818
Clopidogrel at 1-year follow-up (%)	105	85.7	192	84.4	0.866
Aspirin at 2-year follow-up (%)	103	96.1	179	94.7	0.777

Note: *Data are shown as mean ± SD.

Abbreviations: CAD, coronary artery disease; NA, not applicable; NYHA, New York Heart Association.

Table 2 Procedural and angiographic variables

Variable	Female n=127	Male n=221	P-value
Vessels treated (n)	398	488	
Stents per vessel (n)*	1.8±1.2	2.1±1.4	0.009
Stent type (%)			0.314
Everolimus	50.4	56.6	
Paclitaxel	49.6	43.4	
Lesion location (%)			
Ostial lesion	10.9	6.7	0.013
Bifurcating nonleft main	27.2	32	0.093
Left main	3.9	7.3	0.641
Ejection fraction (%)*	54±13	48±15	0.001
Vessels with restenotic lesions (%)	17.5	30.1	0.001
SYNTAX scoring (n=105 for males and n=57 for females)*	19.7±13.9	20.8±13.8	0.650
Treated length per vessel treated (mm)	26.7	31.7	0.018
Diameter of index vessel (mm)*	2.9±0.50	3.0±0.50	0.005

Note: *Data are shown as mean ± SD.

The primary outcome of the study was differences between M and F in TLF, defined as cardiac death, nonfatal myocardial infarction (MI) related to target vessel, and TLR. Differences in secondary outcomes (target vessel revascularization [TVR], target vessel failure, acute stent thrombosis as defined by the Academic Research Consortium,²¹ nonfatal MI, and cardiac death) were prespecified as secondary end points.

Statistical analysis

Descriptive analysis was performed on all variables. Student's *t*-test was used for continuous variables and chi-square testing for dichotomous variables. Univariate analysis compared the demographic, clinical, angiographic, and outcome variables between M and F. TLF survival analysis (Kaplan–Meier) was performed for both subgroups. Cox regression analysis used backward elimination modeling for age, New York Heart Association classification, renal failure, history of prior angioplasty, ejection fraction, smoking history, number of stents per patient, total lesion length treated per patient, and patients with treated aorto-ostial, bifurcating, or restenotic lesions. SPSS version 11 (IBM, Armonk, NY, USA) software was used to conduct the analysis.

Results

Table 1 illustrates descriptive and clinical variables. M had a higher prevalence of smoking and prior PCIs. F were older and had higher prevalence of prior stroke. Procedural and angiographic variables are shown in Table 2. M had lower ejection fraction, larger coronaries, longer treated lesion length, and more restenotic lesions on presentation and

received more stents per patient. Both M and F received an equal proportion of EES and PES. SYNTAX scoring was statistically not different between M and F (M 20.8±13.8, F 19.7±13.9, $P=0.650$). Unfractionated heparin was the predominant antithrombin used in the laboratory in 82.5% of patients. The rest of the patients received bivalirudin (17.5%), with no statistical difference between M and F (M =37 [16.7%], F =24 [18.9%]). The majority of both M and F were still on dual antiplatelet agents at 1-year follow-up and on aspirin at 2 years. The reasons for the index angiogram are listed in Table 3 and appear not to be different for M and F. The majority of patients were symptomatic with either acute coronary syndromes or chest pain/dyspnea with abnormal functional testing. Less than 20% of patients had no symptoms and were treated for an abnormal functional test or as part of a staged procedure. Despite the complex disease treated, angiographic success, defined as obtaining a residual stenosis of <30%, was achieved in all cases.

At 2-year follow-up, the primary end point of TLF was 24.8% and 27.4% in both F and M, respectively ($P=0.614$) (Table 4), with no statistical difference in the secondary end points between target vessel failure (31.5% versus [vs] 35.9%, $P=0.414$), TLR (21.6% vs 23.3%, $P=0.789$), cardiac death (3.2% vs 2.8%, $P=1.00$), definite and probable stent thrombosis (M 2.3% vs F 0.0%), and nonfatal MI (3.2% vs 5.0%, $P=0.715$). Cox regression analysis using backward elimination showed that the number of stents per patient was the only independent predictor of TLF with time (hazard ratio 1.201, 95% confidence interval [CI] 1.126–1.280, $P=0.001$). TLF was not statistically different between M and F (hazard ratio 0.815, 95% CI 0.460–1.444, $P=0.483$) (Figure 1).

Discussion

Studies prior to the widespread use of DES suggested that F had a higher in-hospital mortality and poorer outcome, late after PCI, than M.^{1–3} Recent data suggest, however,

Table 3 Reasons for the index angiogram

Reason	Female n=127 (%)	Male n=221 (%)
Unstable angina/NSTEMI	52	53.8
STEMI	5.5	2.7
Chest pain with abnormal functional test	19.7	13.6
Abnormal functional test, asymptomatic	4.7	8.1
Staged procedure	13.4	17.6
Unexplained dyspnea	0.8	1.4
Cardiomyopathy	0.8	0.9
Others	3.1	1.9

Abbreviations: NSTEMI, non-ST segment elevation myocardial infarction; STEMI, ST segment elevation myocardial infarction.

Table 4 Two-year primary and secondary outcomes

Outcome	Female n=127	Male n=221	P-value
Target lesion failure (%)	24.8	27.4	0.614
Target vessel failure (%)	31.5	35.9	0.414
Target lesion revascularization (%)	21.6	23.3	0.789
Target vessel revascularization (%)	27.6	32.4	0.397
Stent thrombosis (%)			NA
None	97.6	96.3	
Definite	0	1.8	
Probable	0	0.5	
Possible	2.4	1.4	
Nonfatal myocardial infarction (%)	3.2	5.0	0.715
Cardiac death (%)	3.2	2.8	1.000

Abbreviation: NA, not applicable.

that long-term clinical outcomes and post-PCI mortality are unlikely to be different between the sexes.¹⁻¹⁶ The Rapamycin-eluting Stent Evaluated at Rotterdam Cardiology Hospital (RESEARCH) and Taxus Stent Evaluated at Rotterdam Cardiology Hospital (T-SEARCH) studies showed no differences in 3-year outcomes between M and F using rapamycin and paclitaxel DES.⁵ Solinas et al,¹⁰ in a pooled analysis from four randomized trials of sirolimus-eluting versus bare metal stents, analyzed clinical outcomes based on sex. Using multivariate analysis, female sex was not a predictor of clinical outcomes regardless of stent type and despite more comorbidities found in F than in M (older with more frequent presence of diabetes, hypertension, and congestive heart failure). Furthermore, a report from the Blue Cross Blue Shield of Michigan Cardiovascular Consortium PCI registry indicated no difference in mortality between M and F post-PCI.⁶ Our data are consistent with these reports showing that in multivariate analysis, female sex is not a predictor of TLF at 2-year follow-up, despite older age and higher rate of strokes on presentation.

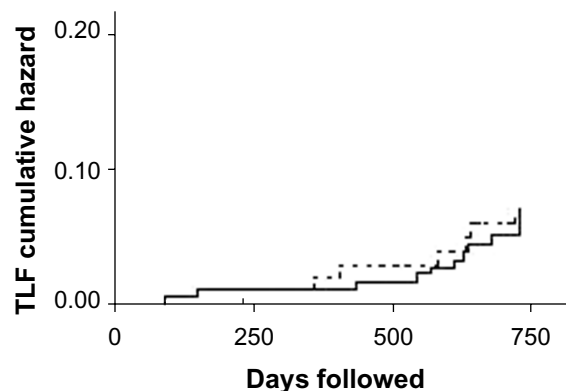


Figure 1 Hazard ratio of target lesion failure (TLF) at 2-year follow-up in males (interrupted line) and females (solid line) who received drug-eluting stents at a tertiary medical center.

A higher rate of TLF was seen in both M and F in our study than was reported by several registries or randomized trials.^{22,23} In SPIRIT IV,²¹ TLF was 4.2% and 6.8% for EES and PES, respectively. Furthermore, in Second-generation Everolimus-eluting and Paclitaxel-eluting Stents in Real-life Practice (COMPARE),²³ the primary composite end point of all-cause mortality, MI, and TVR at 1 year occurred in 6% in EES and 9% in PES. Published data from real-world registries^{24,25} also showed a low TLR. In the Percutaneous Coronary Intervention with Second-generation Paclitaxel-eluting Stents Versus Everolimus-eluting Stents in United States Contemporary Practice (REWARDS TLX) multicenter registry,²⁴ the primary composite end point of all-cause death, Q-wave MI, TVR, and stent thrombosis at 1 year was 7.8% for EES and 10.8% for PES. This is in contrast to our data where TLF and TLR were clinically significantly higher than reported in the literature.

The etiology of higher TLF in our data is unclear, but it is likely related to a higher complexity of disease,²⁶ including a larger percentage of bifurcating lesions, ostial disease, and left main disease. Also, the number of stents used, as a reflection of the length of disease treated per patient, is considerably high in both sexes, and more so in M than in F. These lesion subsets correlate with higher TLR and adverse event rates. When adjusting for these complex angiographic variables, sex was not a predictor of TLF. Unadjusted TLF occurred in 32.3% for PES versus 21.5% for EES ($P=0.027$). However, we have noted no differences in the use of EES versus PES within each sex category (Table 2).

Conclusion

Our data confirm that PCI is safe and effective in women and that differences between the older studies and those that are more recent reside mostly in adjusting for several variables that are independent of the sex category and that correlate with poorer outcomes after PCI. These factors include age (F present to PCI at an older age than M), time to presentation (F tend to recognize fewer heart attack symptoms),²⁷ comorbid factors such as diabetes, and anatomic differences (F have smaller coronary arteries than M, a risk factor for TLR).

One of the limitations of this study is its relatively small size and its retrospective design. An unselected consecutive cohort of patients treated with EES and PES has reduced selection bias. Also, there was no statistical difference on cross-analysis between the choice of the DES and sex category. Another limitation of the study is that the two cohorts are not matched on several variables. Logistic

regression analysis was performed, however, to model for these differences and determine the role of sex category as an independent predictor for TLF. Finally, our data are consistent with recently published data on DES showing outcomes were not different statistically between sexes in the current era of post-PCI.

Disclosure

The Midwest Cardiovascular Research Foundation (MCRF) has received research and educational grants from Medtronic, Abbott, and Boston Scientific. This paper was supported in part by the Nicolas and Gail Research Fund at MCRF and was presented in part, in abstract form at Cardiovascular Research Technologies 2013, Washington DC, USA.

References

- Kelsey SF, James M, Holubkov AL, et al. Results of percutaneous transluminal coronary angioplasty in women. 1985–1986 National Heart, Lung, and Blood Institute's Coronary Angioplasty Registry. *Circulation*. 1993;87:720–727.
- Malenka DJ, O'Connor GT, Quinon H, et al. Differences in outcomes between women and men associated with percutaneous transluminal coronary angioplasty. A regional prospective study of 13,061 procedures. Northern New England Cardiovascular Disease Study Group. *Circulation*. 1996;94(Suppl 9):II99–II104.
- Glaser R, Selzer F, Jacobs AK, et al. Effect of gender on prognosis following percutaneous coronary intervention for stable angina pectoris and acute coronary syndromes. *Am J Cardiol*. 2006;98:1446–1450.
- Narins CR, Ling FS, Fischl M, et al. In-hospital mortality among women undergoing contemporary elective percutaneous coronary intervention: a reexamination of the gender gap. *Clin Cardiol*. 2006;29:254–258.
- Onuma Y, Kukreja N, Daemen J, et al; Interventional Cardiologists of Thoraxcenter. Impact of sex on 3-year outcome after percutaneous coronary intervention using bare-metal and drug-eluting stents in previously untreated coronary artery disease: insights from the RESEARCH (Rapamycin-Eluting Stent Evaluated at Rotterdam Cardiology Hospital) and T-SEARCH (Taxus-Stent Evaluated at Rotterdam Cardiology Hospital) Registries. *JACC Cardiovasc Interv*. 2009;2:603–610.
- Duvernoy CS, Smith DE, Manohar P, et al. Gender differences in adverse outcomes after contemporary percutaneous coronary intervention: an analysis from the Blue Cross Blue Shield of Michigan Cardiovascular Consortium (BMC2) percutaneous coronary intervention registry. *Am Heart J*. 2010;159:677–683.
- Tillmanns H, Waas W, Voss R, et al. Gender differences in the outcome of cardiac interventions. *Herz*. 2005;30:375–389.
- Ben-Ami T, Gilutz H, Porath A, et al. No gender difference in the clinical management and outcome of unstable angina. *Isr Med Assoc J*. 2005;7:228–232.
- Sheiban I, La Spina C, Cavallero E, et al. Sex-related differences in patients undergoing percutaneous unprotected left main stenting. *EuroIntervention*. 2010;5:795–800.
- Solinas E, Nikolsky E, Lansky AJ, et al. Gender-specific outcomes after sirolimus-eluting stent implantation. *J Am Coll Cardiol*. 2007;50:2111–2116.
- Presbitero P, Belli G, Zavalloni D, et al. “Gender paradox” in outcome after percutaneous coronary intervention with paclitaxel eluting stents. *EuroIntervention*. 2008;4:345–350.
- Thompson CA, Kaplan AV, Friedman BJ, et al. Gender-based differences of percutaneous coronary intervention in the drug-eluting stent era. *Catheter Cardiovasc Interv*. 2006;67:25–31.
- Suessenbacher A, Doerler J, Alber H, et al. Gender-related outcome following percutaneous coronary intervention for ST-elevation myocardial infarction: data from the Austrian acute PCI registry. *EuroIntervention*. 2008;4:271–276.
- Lansky AJ, Costa RA, Mooney M, et al; TAXUS-IV Investigators. Gender-based outcomes after paclitaxel-eluting stent implantation in patients with coronary artery disease. *J Am Coll Cardiol*. 2005;45:1180–1185.
- Kovacic JC, Mehran R, Karajgikar R, et al. Female gender and mortality after percutaneous coronary intervention: results from a large registry. *Catheter Cardiovasc Interv*. 2012;80:514–521.
- Buja P, D'Amico G, Facchin M, et al. Gender-related differences of diabetic patients undergoing percutaneous coronary intervention with drug-eluting stents: a real-life multicenter experience. *Int J Cardiol*. 2013;168(1):139–143.
- Ogita M, Miyauchi K, Dohi T, et al. Gender-based outcomes among patients with diabetes mellitus after percutaneous coronary intervention in the drug-eluting stent era. *Int Heart J*. 2011;52:348–352.
- Tuomainen PO, Ylitalo A, Niemelä M, et al. Gender-based analysis of the 3-year outcome of bioactive stents versus paclitaxel-eluting stents in patients with acute myocardial infarction: an insight from the TITAX-AMI trial. *J Invasive Cardiol*. 2012;24:104–108.
- Niccoli G, Sgueglia GA, Cosentino N, et al. Impact of gender on clinical outcomes after mTOR-inhibitor drug-eluting stent implantation in patients with first manifestation of ischaemic heart disease. *Eur J Prev Cardiol*. 2012;19:914–926.
- Shammas NW, Shammas GA, Sharis P, Jerin M. Age differences in long-term outcomes of coronary patients treated with drug eluting stents at a tertiary medical center. *J Aging Res*. 2013;2013:471026.
- US Food and Drug Administration. Circulatory System Devices Panel. Notice of Meeting. Available from: <http://www.fda.gov/ohrms/dockets/ac/cdrh06.html#circulatory>. Accessed June 26, 2014.
- Stone GW, Rizvi A, Newman W, et al. Everolimus-eluting versus paclitaxel-eluting stents in coronary artery disease. *N Engl J Med*. 2010;362:1663–1674.
- Kedhi E, Joesoef KS, McFadden E. Second-generation Everolimus-eluting and Paclitaxel-eluting Stents in Real-life Practice (COMPARE): a randomized trial. *Lancet*. 2010;375(9710):201–209.
- Waksman R, Ghali M, Goodroe R, et al. Percutaneous Coronary Intervention with Second-generation Paclitaxel-eluting Stents Versus Everolimus-eluting Stents in United States Contemporary Practice (REWARDS TLX trial). *Am J Cardiol*. 2012;110(8):1119–1124.
- Mahmoudi M, Delhaye C, Wakabayashi K, et al. Outcomes after unrestricted use of everolimus-eluting stent compared to paclitaxel- and sirolimus-eluting stents. *Am J Cardiol*. 2011;107:1757–1762.
- Brodie BR, Stuckey T, Downey W, et al; STENT (Strategic Transcatheter Evaluation of New Therapies) Group. Outcomes and complications with off-label use of drug-eluting stents: results from the STENT (Strategic Transcatheter Evaluation of New Therapies) Group. *JACC Cardiovasc Interv*. 2008;1:405–414.
- Flink LE, Sciacca RR, Bier ML, et al. Women at risk for cardiovascular disease lack knowledge of heart attack symptoms. *Clin Cardiol*. 2013;36:133–138.

Vascular Health and Risk Management

Dovepress

Publish your work in this journal

Vascular Health and Risk Management is an international, peer-reviewed journal of therapeutics and risk management, focusing on concise rapid reporting of clinical studies on the processes involved in the maintenance of vascular health; the monitoring, prevention and treatment of vascular disease and its sequelae; and the involvement of

metabolic disorders, particularly diabetes. This journal is indexed on PubMed Central and MedLine. The manuscript management system is completely online and includes a very quick and fair peer-review system, which is all easy to use. Visit <http://www.dovepress.com/testimonials.php> to read real quotes from published authors.

Submit your manuscript here: <http://www.dovepress.com/vascular-health-and-risk-management-journal>