


ORIGINAL RESEARCH

Genetic variants at the *RTP4/MASP1* locus are associated with fatigue in Scandinavian patients with primary Sjögren's syndrome

Katrine Brække Norheim,^{1,2} Juliana Imgenberg-Kreuz,^{1,3} Andrei Alexsson,³ Svein Joar Auglænd Johnsen,¹ Kjetil Bårdsen,¹ Johan Gorgas Brun,^{2,4} Rezvan Kiani Dehkordi,³ Elke Theander,⁵ Thomas Mandl,⁵ Roland Jonsson,² Wan-Fai Ng,^{6,7} Christopher J Lessard,⁸ Astrid Rasmussen,⁹ Kathy Sivilis,¹⁰ Lars Ronnblom,³ Roald Omdal ^{1,2}

To cite: Norheim KB, Imgenberg-Kreuz J, Alexsson A, et al. Genetic variants at the *RTP4/MASP1* locus are associated with fatigue in Scandinavian patients with primary Sjögren's syndrome. *RMD Open* 2021;**7**:e001832. doi:10.1136/rmdopen-2021-001832

► Additional supplemental material is published online only. To view, please visit the journal online (<http://dx.doi.org/10.1136/rmdopen-2021-001832>).

KBN and JI-K contributed equally.

Received 19 July 2021
Accepted 19 November 2021



© Author(s) (or their employer(s)) 2021. Re-use permitted under CC BY-NC. No commercial re-use. See rights and permissions. Published by BMJ.

For numbered affiliations see end of article.

Correspondence to
Professor Roald Omdal;
roald.omdal@sus.no

ABSTRACT

Objectives Fatigue is common and severe in primary Sjögren's syndrome (pSS). The aim of this study was to identify genetic determinants of fatigue in pSS through a genome-wide association study.

Methods Patients with pSS from Norway, Sweden, UK and USA with fatigue and genotype data available were included. After genotype imputation and quality control, 682 patients and 4 966 157 genetic markers were available. Association analysis in each cohort using linear regression with fatigue as a continuous variable and meta-analyses between the cohorts were performed.

Results Meta-analysis of the Norwegian and Swedish cohorts identified five polymorphisms within the same linkage disequilibrium block at the receptor transporter protein 4 (*RTP4*)/*MASP1* locus associated with fatigue with genome-wide significance (GWS) ($p < 5 \times 10^{-8}$). Patients homozygous for the major allele scored 25 mm higher on the fatigue Visual Analogue Scale than patients homozygous for the minor allele. There were no variants associated with fatigue with GWS in meta-analyses of the US/UK cohorts, or all four cohorts. *RTP4* expression in pSS B cells was upregulated and positively correlated with the type I interferon score. Expression quantitative trait loci effects in whole blood for fatigue-associated variants at *RTP4/MASP1* and levels of *RTP4* and *MASP1* expression were identified.

Conclusion Genetic variations at *RTP4/MASP1* are associated with fatigue in Scandinavian pSS patients. *RTP4* encodes a Golgi chaperone that influences opioid pain receptor function and *MASP1* is involved in complement activation. These results add evidence for genetic influence over fatigue in pSS.

INTRODUCTION

Primary Sjögren's syndrome (pSS) is a chronic systemic autoimmune disease. Fatigue, described as 'an overwhelming sense of tiredness, lack of energy and feeling of

Key messages

What is already known about this subject?

- Fatigue is a common phenomenon in chronic inflammatory diseases including primary Sjögren's syndrome (pSS).
- Genetic and epigenetic studies indicate a genetic component of fatigue.

What does this study add?

- Our study demonstrates that genetic variants are associated with fatigue in pSS and specifically that the major allele of the indel rs60344347 at the receptor transporter protein 4 (*RTP4*)/*MASP1* locus was associated with higher fatigue in Scandinavian patients with pSS.
- *RTP4* encodes a protein involved in pain perception and may represent a functional link between pain and fatigue.

How might this impact on clinical practice or further developments?

- Insight into genetic susceptibility to fatigue encourages a better understanding of the phenomenon, which may facilitate improved patient education, possibilities for precision medicine and eventually development of targeted treatment.

exhaustion', affects 70%–80% of pSS patients and causes a marked reduction of quality of life.^{1–3} The exact mechanisms leading to fatigue are unknown. Activation of innate immunity and proinflammatory cytokines are recognised as important factors.^{4,5} Evolutionarily, fatigue can be considered to be a part of sickness behaviour, a protective behaviour that increases the chances of survival during acute sickness.⁶ This behaviour turns inexpedient in states of chronic inflammation.

Fatigue seems to persist in the individual pSS patient.^{3,7} This persistence, as well as the observation that patients with similar disease activity often report large differences in fatigue severity, could indicate that genetic variation influences fatigue. Polymorphisms in genes encoding tumour necrosis factor- α , interleukin (IL) 1 β , IL4 and IL6 have been associated with fatigue in various conditions.^{8,9} We have previously reported that genes involved in regulation of innate and adaptive immunity are differentially methylated in pSS subjects with high vs low fatigue.¹⁰ Our hypothesis is that specific genes contribute to regulation of fatigue and that genetic variation can influence fatigue severity. Consequently, we sought to identify genetic variants implicated in fatigue in pSS through a Genome-Wide Association Study (GWAS).

MATERIALS AND METHODS

Patient and public involvement statement

Patients were not involved in the planning or conduction of the study.

Subjects

The patients were part of a larger GWAS of pSS,¹¹ and the 690 patients with both genotype and fatigue data available were included in this study (online supplemental figure S1). All patients fulfilled the American-European Consensus Group (AECG) criteria for pSS,¹² but because the study was performed prior to the publication of the EULAR primary Sjögren's syndrome disease activity index (ESSDAI)¹³ in 2010, validated disease activity measures were not available. Untreated hypothyreosis was an exclusion criterion. Patients were recruited from Norway (n=227) (Bergen (n=135), Stavanger (n=92)), Sweden (n=140) (Malmö (n=82), Uppsala (n=58)), UK (n=128) (UK Primary Sjögren's Syndrome Registry) and USA (n=195) (Oklahoma Medical Research Foundation, OMRF). After genotyping quality control (QC) 682 patients remained for further analyses (table 1).

Measures of fatigue

The patients included in the study were evaluated for fatigue with two instruments; the fatigue Visual Analogue Scale (fVAS; all patients from Norway, UK, USA, Uppsala, and n=24 patients from Malmö) and the fatigue item of the EULAR Sjögren's Syndrome Patient Reported Index

(ESSPRI; n=58 patients from Malmö).^{14,15} The fVAS is a 100 mm horizontal line with vertical anchors. The Norwegian, Swedish and UK edition queried about fatigue during the last week using the wording 'No fatigue' at the left anchor (0 mm) and 'Fatigue as bad as it can be' at the right anchor (100 mm). The USA fVAS edition queried about fatigue during the last 3 days with the question 'How would you rate your energy level?' and the wordings 'Plenty of energy' and 'No energy' at the left and right anchor, respectively. The ESSPRI fatigue item is a Likert scale (0–10) with the question 'How severe has your fatigue been the last two weeks?'. Patient ESSPRI fatigue scores were multiplied by 10 to achieve the same range (0–100) as the fVAS. Both instruments were assessed simultaneously in 58 patients showing high correlation (Spearman's $r=0.87$, $p<0.0001$) (online supplemental figure S2).

Genotyping, QC and imputation

The Swedish and Norwegian cohorts were genotyped using the Illumina OmniExpressExome array at the SNP&SEQ Technology Platform, National Genomics Infrastructure, Science for Life Laboratory, Uppsala, Sweden. The UK and USA cohorts were genotyped on the Illumina Omni1-Quad array at the Clinical Genomics Core of the OMRF as previously described.¹¹ Genotype calling was performed using GenomeStudio (Illumina). QC was carried out within the PLINKV.1.9 software framework.¹⁶ Only probes present on both genotyping arrays were included in the analysis. Variants with a genotype call rate $<95\%$, Hardy-Weinberg equilibrium $p<1\times 10^{-4}$ and/or minor allele frequency (MAF) $<5\%$ were excluded. Samples with $<97\%$ call rate or excessively increased heterozygosity were excluded, and only samples from unrelated individuals were kept. Principal component analysis (PCA) was performed using Eigensoft (V.6.0.2) to account for population stratification. First, study samples were projected to a combined reference panel (1000 Genomes and Human Genome Diversity Project)^{17,18} and only samples clustering together with the European population were kept (online supplemental figure S3A). Second, to increase cohort homogeneity, an unsupervised PCA was performed where samples <5 SD from the corresponding cohort mean in the first three dimensions were kept (online supplemental figure S3B). After QC,

Table 1 Clinical characteristics of patients with primary Sjögren's syndrome included in the association analyses after genotyping quality control

	Total (n=682)	Norway (n=225)	Sweden (n=138)	UK (n=128)	USA (n=191)
Age, years (mean \pm SD)	58.8 \pm 12.8	58.0 \pm 12.1	55.2 \pm 12.3	67.2 \pm 10.8	56.9 \pm 13.0
Females, n (%)	638 (93.5)	206 (91.2)	127 (92.0)	123 (96.1)	182 (95.3)
Anti-SSA antibodies (%)	74	72	76	88	66
Anti-SSB antibodies (%)	50	40	52	70	46
fVAS, mm (mean \pm SD)	56.5 \pm 27.2	61.1 \pm 27.7	59.9 \pm 24.5	54.2 \pm 28.2	50.2 \pm 26.5

fVAS, fatigue Visual Analogue Scale; SSA, Sjögren's syndrome-related antigen A; SSB, Sjögren's syndrome-related antigen B.

682 samples and 451 031 genetic markers were available for imputation.

Prephasing using SHAPEIT2 and genotype imputation using IMPUTE2 with the 1000 Genomes phase 3 integrated haplotypes as reference panel were performed.¹⁹ After QC (IMPUTE2 info score ≥ 0.5 and MAF $\geq 5\%$) a total of 4966 157 markers were available for GWAS.

Statistical and bioinformatics analysis

The combined genotyped and imputed dataset was used in all analyses. First, association analyses in each of the four cohorts were performed separately using a linear regression model as implemented in SNPTEST V.2.5.2 with fatigue as continuous variable (0–100), and including sex and the five first principal components as covariates. Results are presented with beta-value and SE referring to the regression coefficient of the association analysis. Beta-values represent the effect size of the minor allele on the level of fatigue as determined by fVAS (mm). Then meta-analysis of the Norwegian and Swedish cohorts, and the UK and USA cohorts, respectively, was performed in PLINK V.1.9 using a fixed effect weighted z-score approach. Finally, a meta-analysis including all four cohorts was conducted. Genome-wide significance (GWS) was defined as $p < 5 \times 10^{-8}$, and suggestive significance as $p < 1 \times 10^{-5}$. Results were plotted using R Bioconductor (<https://bioconductor.org/>) and LocusZoom (<http://locuszoom.org/>). For annotation and functional characterisation HaploReg V.4.1 (<http://pubs.broadinstitute.org>), Human Protein Atlas (<http://proteatlas.org/>) and blood expression quantitative trait loci (eQTL) Browser (<http://genenetwork.nl/bloodeqtlbrowser/>) were queried.

Receptor transporter protein 4 gene and protein expression analyses

Transcriptome data of peripheral CD19⁺ B cells were available from 16 pSS patients (Uppsala, Sweden) and 20 matched healthy controls.²⁰ As previously described, mRNA expression was analysed within the Cufflinks/Cuffdiff pipeline, and type I interferon (IFN) scores were calculated based on mRNA expression levels of *IFI35*, *IFITM1*, *IRF7*, *MX1* and *STAT1*.²¹ Correlations were analysed using Spearman's rank test, and continuous variables using Mann-Whitney U test applying $p < 0.05$ as significance cut-off. Receptor transporter protein 4 (RTP4) concentration in plasma was measured by ELISA in 92 pSS patients (Stavanger, Norway). All samples were analysed in duplicate and ELISA plates were read on a Synergy H1 microplate reader. Linear regression was performed with fVAS as the dependent variable and RTP4 protein level as the constant.

RESULTS

Fatigue

All four cohorts reported a high level of fatigue as defined as mean fVAS > 50 . However, fatigue scores differed between the cohorts with significantly lower

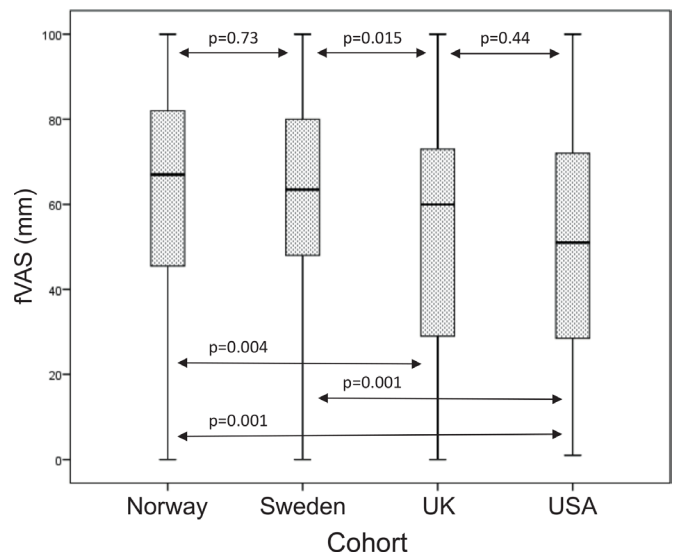


Figure 1 Boxplot of fVAS scores (in mm) in the Norwegian, Swedish, UK and USA cohorts of patients with primary Sjögren's syndrome. Boxes represent median and IQR, whiskers indicate total range with $p < 0.05$ defining significance. fVAS, fatigue Visual Analogue Scale.

fVAS in the UK and USA cohorts compared with the Swedish and Norwegian cohorts (table 1, figure 1 and online supplemental figure S4). Fatigue scores did not correlate significantly with age ($r_s = -0.06$, $p = 0.12$) (online supplemental figure S5) or haemoglobin-levels (tested in the Norwegian and Swedish cohort only, results not shown) and did not differ significantly between patients positive for Sjögren's syndrome-related antigen A (SSA) autoantibodies compared with patients negative for SSA (tested in the Norwegian and Swedish cohorts, $p = 0.34$) (online supplemental table S1).

Genome-wide association analysis

Separate analyses in each of the four cohorts

To identify genetic determinants of fatigue in pSS, we used the genome-wide imputed dataset of 4966 157 autosomal genetic markers (MAF $\geq 5\%$). First, we performed association analyses in each of the four cohorts separately (Norway, Sweden, UK, USA). In the Norwegian cohort this analysis revealed 45 variants at six independent loci reaching suggestive significance ($p < 1 \times 10^{-5}$), with the most significant signal for an intronic single nucleotide polymorphism (SNP) at the Chromodomain helicase DNA binding protein 6 gene (rs1969700, $p = 8.5 \times 10^{-7}$, beta (SE) = 12.89 (2.55)) (online supplemental table S2). The analysis in the Swedish cohort found 95 variants ($p < 1 \times 10^{-5}$) at eight independent loci. One intronic variant at the Rho GTPase activating protein 26 (*ARHGAP26*) gene exceeded GWS (rs10039856, $p = 9.4 \times 10^{-9}$, beta (SE) = -32.84 (5.29)) (online supplemental table S3). In addition, strong associations were observed for variants upstream of the *RTP4* gene and the Mannan binding lectin serine peptidase 1 (*MASPI*) gene (top variant rs60344347, $p = 1.1 \times 10^{-6}$, Beta (SE) = -14.96 (2.94)).

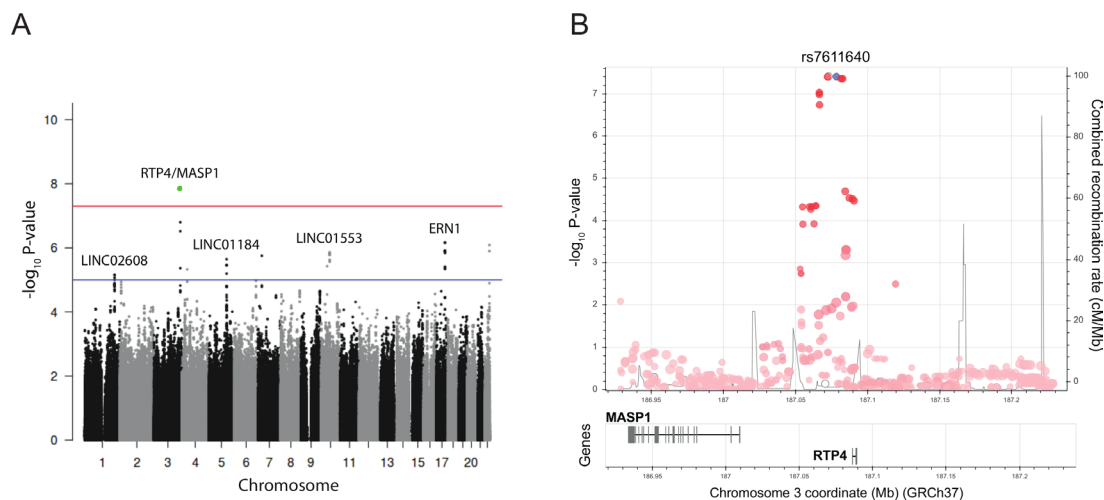


Figure 2 GWAS meta-analysis results of the Scandinavian cohorts. (A) Manhattan plot illustrating the $-\log_{10}$ p value of all genetic variants analysed in the GWAS meta-analysis of the Norwegian and Swedish cohorts against their chromosomal position. The red horizontal line represents the genome-wide significance threshold ($p < 5 \times 10^{-8}$), the blue line represents the suggestive significance threshold of $p < 1 \times 10^{-5}$. (B) LD link plot with the association p-values on the $-\log_{10}$ scale of all analysed variants in a 150 kb window around the top associated variant (indel rs60344347) identified in the meta-analysis of the Norwegian and Swedish cohorts plotted against their chromosomal position using the top biallelic SNP (rs7611640) as query variant (indicated in blue) for the regional LD structure in the European reference population, where light red means low LD and dark red corresponds to full LD ($R^2 = 1$) with the query variant. GWAS, genome-wide association study; LD, linkage disequilibrium; RTP4, receptor transporter protein 4

Association analysis of the UK cohort found 88 variants at twelve independent loci ($p < 1 \times 10^{-5}$), with the top SNP at tumour suppressor candidate 3 gene (rs12679528, $p = 1.2 \times 10^{-7}$, Beta (SE) = 17.95 (3.21)) (online supplemental table S4). The separate analysis in the US cohort identified 25 suggestive variants at eight independent loci, with the top signal at the Xin actin binding repeat containing 2 gene (rs7605830, $p = 2.6 \times 10^{-6}$, beta (SE) = -28.18 (5.76)) (online supplemental table S5).

Meta-analyses

Since mean and distribution of fatigue scores were similar in Norway and Sweden with significantly higher fatigue than in the UK and US cohorts, we hypothesised that patients from the two Scandinavian countries may share a common genetic predisposition to fatigue (table 1, figure 1, online supplemental figure S4). We, therefore, performed separate meta-analyses of Norway/Sweden and UK/USA, respectively. The meta-analysis in the Norwegian and Swedish cohorts revealed five polymorphisms (one insertion/deletion (indel) and four SNPs) within the same linkage disequilibrium (LD) block (R^2 between 0.94–1.0 to top variant rs60344347) located between *RTP4* and *MASP1* on chromosome 3 that exceeded GWS (figure 2A,B). The minor allele of these variants was associated with less fatigue with a regression coefficient of the top variant rs60344347 ($p = 3.9 \times 10^{-8}$) of beta (SE) = -12.5 (3.08) (table 2). This implicates that compared with an individual being homozygote for the minor allele, on average a heterozygote individual will have a 12.5 mm higher fVAS score, and correspondingly, an individual homozygote for the major allele (risk allele) has a 25 mm higher fVAS score (table 2, online

supplemental figure S6). Suggestive significance was exceeded by three additional SNPs within the *RTP4/MASP1* region and 45 variants located at twelve other independent loci (figure 2A,B, online supplemental table S6). Of these, SNPs at endoplasmic reticulum to nucleus signalling 1 (*ERN1*) with top variant rs75160892 ($p = 9.1 \times 10^{-7}$) were the second most significantly associated region after *RTP4/MASP1*.

The meta-analysis of the UK and USA cohorts found no associations exceeding GWS. However, 34 variants at six loci reached suggestive significance, including the PR/SET domain 1 (*PRDM1*) gene (top SNP rs12175002, $p = 1.0 \times 10^{-6}$) (online supplemental table S7). No association was found between fatigue and polymorphisms in the *RTP4/MASP1* locus in the UK and USA cohorts (online supplemental table S8). Finally, we performed a meta-analysis including all four cohorts and observed two suggestive associations with fatigue; an intronic variant at the LIM homeobox 1 locus (*LHX1/LHX1-DT*) on chromosome 17 (rs10048170, $p = 9.6 \times 10^{-7}$) and at the *LOC102723654* on chromosome 5 (rs4509075, $p = 3.0 \times 10^{-6}$) (online supplemental table S9).

RTP4 gene expression and protein expression

Several genetic variants exceeding GWA were identified at the *RTP4/MASP1* locus in the meta-analysis of the Scandinavian cohorts. We, therefore, aimed to further characterise potential functions of *RTP4/MASP1* and the fatigue-associated variants by investigating gene and protein expression data. *RTP4* has a low tissue specificity and is widely expressed in various tissues and cell types. *MASP1* expression is specifically seen in liver, brain, female tissues and muscular tissues. We queried public databases

Table 2 Genetic variants associated with the level of fatigue in patients with primary Sjögren's syndrome exceeding genome-wide significance in the meta-analysis of the Norwegian and Swedish cohorts

Chr	Variant	Locus	Major/minor allele	Norway				Sweden				Meta-analysis Norway-Sweden				
				MAF	P value	Beta*	SE	MAF	P value	Beta*	SE	P value	Beta*	SE	Q†	I‡
3	rs60344347	RTP4/MASPI	CCTCT/C	0.17	1.47×10 ⁻²	-8.77	3.57	1.07×10 ⁻⁶	-14.96	2.93	3.88×10 ⁻⁸	-12.46	3.08	0.18	44.13	
3	rs7611640	RTP4/MASPI	G/A	0.17	1.48×10 ⁻²	-8.77	3.57	1.08×10 ⁻⁶	-14.96	2.93	3.92×10 ⁻⁸	-12.46	3.07	0.18	44.12	
3	rs1985269	RTP4/MASPI	C/T	0.17	1.48×10 ⁻²	-8.75	3.57	1.08×10 ⁻⁶	-14.95	2.93	3.97×10 ⁻⁸	-12.45	3.08	0.18	44.28	
3	rs73182503	RTP4/MASPI	A/G	0.17	1.62×10 ⁻²	-8.67	3.58	1.09×10 ⁻⁶	-14.95	2.94	4.41×10 ⁻⁸	-12.43	3.12	0.17	45.75	
3	rs7626469	RTP4/MASPI	C/G	0.17	1.62×10 ⁻²	-8.67	3.58	1.09×10 ⁻⁶	-14.96	2.94	4.41×10 ⁻⁸	-12.43	3.13	0.17	45.76	

*The beta-value refers to the regression coefficient of the association analysis and represents the effect size of the minor allele on the level of fatigue as determined as fVAS (mm).

†Cochrane's Q statistic p value.

‡I² heterogeneity index.

fVAS, fatigue Visual Analogue Scale; MAF, minor allele frequency; MASPI, mannan binding lectin serine peptidase 1; RTP4, receptor transporter protein 4.

eQTL effects of the genetic risk variants identified in the Scandinavian pSS cohorts. eQTLs were reported for the fatigue-associated variant rs7611640 and for two further variants within the same LD block ($R^2=0.79$ to rs6797770, and $R^2=0.78$ to rs1518868) and whole blood gene expression levels of *RTP4* and *MASPI* (table 3).²² The minor allele of the genetic variant rs7611640 was associated with decreased whole blood mRNA expression in both *RTP4* ($p=1.4\times 10^{-10}$) and *MASPI* ($p=2.4\times 10^{-3}$).

Analysis of gene expression based on RNA-sequencing in pSS patients (n=16) and healthy controls (n=20) from our previous studies revealed upregulation of *RTP4* expression in pSS B cells compared with controls ($p<5\times 10^{-5}$, fold change=3.4) (figure 3A), while *MASPI* expression was generally low in B cells from both patients and controls (data not shown).^{20 21} In addition, we found a positive correlation of *RTP4* gene expression with type I IFN scores in pSS B cells ($r_s=0.59$, $p=0.02$) (figure 3B). While eQTLs between variants at the *RTP4/MASPI* locus and gene expression levels of *RTP4* and *MASPI* have been reported in public databases (table 3), eQTLs could not be directly studied in our own dataset as the number of patients with both GWAS and RNA-sequencing data was insufficient. Investigation of a potential association between fatigue and *RTP4* protein expression in plasma samples from 92 patients with pSS did not reveal a significant result ($R^2=0.003$, $p=0.6$) (data not shown).

DISCUSSION

The main result of this study is the association between fatigue levels and the *RTP4/MASPI* locus on chromosome 3 with five variants exceeding GWS in the meta-analysis of the Norwegian and Swedish pSS cohorts. The major allele of the top variant showed a strong association with elevated levels of fatigue. The associated variants at this locus were in high LD to each other, located upstream of the *RTP4* and *MASPI* coding regions.

RTP4 encodes the RTP4, a Golgi chaperone involved in the organisation of $\gamma\delta$ opioid pain receptors. The RTP4 protein enables proper assembly and routing of the receptors to the cell surface and interferes with signaling.²³ Pain can be considered a 'danger signal' analogue to how pathogens can induce sickness behaviour during infections.^{5 24 25} Fatigue is a dominant feature in the sickness behaviour response, and the observation of the major allele associated with more fatigue severity may therefore be advantageous. Another aspect of sickness behaviour response is mental depression. Some studies indicate the involvement of *RTP4* in severe depression and suicidal behaviour during IFN- α treatment of hepatitis C infections.^{26 27} These results were extended in a mouse model mimicking IFN- α -related depression; concomitant stimulation with IFN- α and a toll-like receptor (TLR) 3 agonist was necessary to achieve upregulation of IFN-inducible genes, of which *RTP4* reached maximum levels within 24 hours.²⁸ Many patients with pSS or other autoimmune diseases have an 'IFN signature' on the gene expression

Table 3 *Cis*-eQTL effects between genetic variants associated with the level of fatigue in PSS and whole blood gene expression levels at the *RTP4/MASP1* locus

SNP	SNP position	Major/minor allele	eQTL gene	eQTL Z-score	P value*
rs7611640	3:188561096	G/A	<i>RTP4</i>	-6.41	1.4×10 ⁻¹⁰
			<i>MASP1</i>	-3.04	2.4×10 ⁻³
rs6797770	3:188567203	T/C	<i>RTP4</i>	-7.2	5.9×10 ⁻¹³
			<i>MASP1</i>	-3.64	2.8×10 ⁻⁴
rs1518868	3:188572262	T/C	<i>RTP4</i>	-7.33	2.4×10 ⁻¹³
			<i>MASP1</i>	-3.56	3.7×10 ⁻⁴

*P value for the eQTL between the SNP and whole blood mRNA expression of *RTP4*, respectively, *MASP1*, according to Westra *et al.*¹⁸ eQTL, expression quantitative trait locus; *MASP1*, mannan binding lectin serine peptidase 1; PSS, primary Sjögren's syndrome; *RTP4*, receptor transporter protein 4.

level indicating the activation of this pathway.^{29,30} eQTLs between the fatigue-associated variants at the *RTP4/MASP1* locus and gene expression levels of *RTP4* and *MASP1* have been reported.²² Both are IFN-induced genes, and the minor allele, that is, the variant associated with less fatigue, showed reduced mRNA expression of *RTP4* and *MASP1* in whole blood. *MASP1* encodes a serine protease important for the lectin pathway of complement activation, again strengthening the link between inflammation and fatigue.³¹ *MASP1* cleaves C2 and gives rise to a number of highly active complement components. Complement factor B has been associated with fatigue in a proteomics study of cerebrospinal fluid (CSF) in pSS.³² To further characterise a possible functional impact of genetic variants in pSS-related fatigue, we assessed gene and protein expression levels of *RTP4* in pSS patients. Increased mRNA expression of *RTP4* in patients compared with controls was found in peripheral B cells, supporting the hypothesis of a putative functional role for *RTP4* in fatigue. However, no correlation between fatigue severity and *RTP4* protein expression in plasma was observed. It is unknown whether *RTP4* protein expression in plasma reflects intracellular and CSF *RTP4* levels and activity, and whether complex regulatory mechanisms are involved. Additional studies to further dissect the functional molecular impact of *RTP4* and *MASP1* in pSS-related fatigue are therefore needed.

Further, the meta-analysis of the Norwegian and Swedish cohorts identified three SNPs within the *RTP4/MASP1* locus and 45 variants at eleven other loci reaching suggestive significance ($p < 1 \times 10^{-5}$). This included *ERN1* which encodes the Serine/threonine-protein kinase/endoribonuclease inositol-requiring enzyme 1 (IRE1a), a transmembrane resident endoplasmic reticulum protein important for sensing cellular stress signals. There is a complex interaction between IRE1a and the stress-inducible variant of HSP90a³³ which has been associated to severe fatigue in pSS.³⁴ A possible mechanism for HSP90 signalling of fatigue is binding of HSP90α to TLR4 on microglia inducing fatigue through increased IL-1β production.^{34,35} The exact role of *ERN1* and its possible influence on regulatory pathways for fatigue remain to be elucidated.

While the meta-analysis of the UK and USA cohort did not identify any association exceeding GWS, six loci reached suggestive significance, among others variants at the *PRDM1* locus with rs12175002 as the top SNP. *PRDM1* encodes a transcription factor expressed by T and B cells involved in downregulation of immune responses and repression on IFN-β gene expression. The function of *PRDM1* fits well with the hypothesis that downregulating mechanisms of inflammation may be associated with fatigue. Genetic variants at *PRDM1* have previously been associated with Crohn's disease and systemic lupus erythematosus.^{36,37}

Many animal and human studies have documented the importance of proinflammatory cytokines for generation of fatigue, especially IL-1β, and treatment with IL-1 blocking agents has alleviated fatigue in patients with rheumatoid arthritis, diabetes type 2, pSS as well as in cancer.^{32,34,38-42} There were no direct associations with SNPs in genes coding for cytokines in our data, but as discussed above the pathways of the immune system are complex and it is difficult to pinpoint one specific cytokine or molecule, rather a number of signalling pathways interact and generate fatigue.³²

Several other studies aiming to explore the genetics of fatigue in various conditions have been conducted.⁴³⁻⁴⁶ Although the top associated variants differ considerably between studies, the general trend points to association with genes involved in regulation of innate immunity, in line with the sickness behaviour theory.

There are some limitations to this study. The number of cases is relatively small, however, the 682 individuals included after rigorous QC constitute the largest cohort in any reported GWAS of fatigue in inflammatory disease to date. In this study we did not perform any genetic analyses of sub-phenotypes of pSS as we believe this would reduce the power to detect genetic associations. Fatigue is a universal phenomenon observed across a wide range of inflammatory, neurodegenerative, cancer and other diseases, without good evidence that some diseases or conditions have more, or less, fatigue than the others.²⁵ In the current study, 505 patients were SSA positive and 177 were SSA negative, both groups too small to perform GWAS with reasonable power to detect genetic

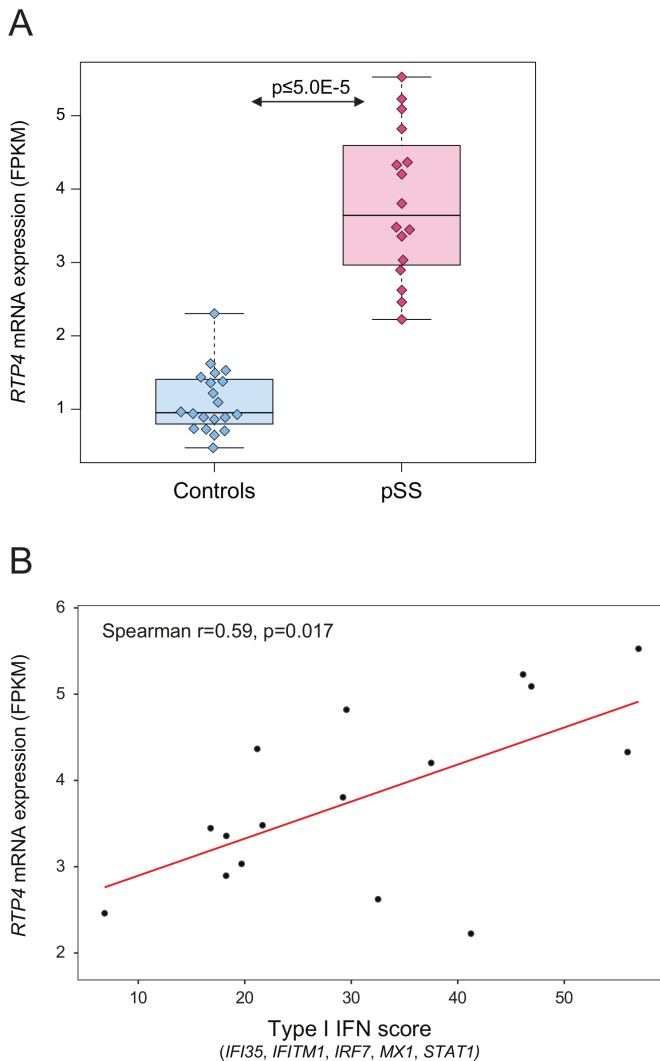


Figure 3 RTP4 mRNA expression (in fragments per kilobase of exon model per million reads mapped (FPKM)) in CD19+ Bcells. (A) Boxplot of RTP4 gene expression in n=16 pSS patients and n=20 healthy controls from Uppsala, Sweden. Boxes represent median and IQR, whiskers indicate total range. (B) Spearman's rank correlation coefficient (r) between RTP4 gene expression and type I IFN score in n=16 pSS patients with $p < 0.05$ defining significance. FPKM fragments per kilobase of exon per million reads. fVAS, fatigue Visual Analogue scale; IFN, interferon; pSS, primary Sjögren's syndrome; RTP4, receptor transporter protein 4.

associations specific for one of the subphenotypes. However, comparing fatigue levels in the 367 subjects in the Scandinavian cohorts stratified for SSA/SSB status we found no difference in fatigue levels between SSA positive or negative, nor between SSA/SSB positive or negative patients.

Depression scores were not available for all patients and could not be included as a covariate in the regression analyses. However, in inflammatory conditions, depression and fatigue probably share some signalling pathways, making it potentially erroneous to adjust for depression.^{47 48}

Disease activity measures were not available as the data were collected prior to the publication of ESSDAI.¹³ We cannot exclude the possibility that correction for disease activity could have had an impact on the results. However, across diseases, influence of disease activity measures on fatigue scores appears to be a phenomenon associated with the use of disease-specific fatigue instruments that comprise elements of disease activity or other disease features, not solely those related to fatigue. This association is seldom observed in studies using generic and uni-dimensional fatigue instruments, like we employed in our study.^{49 50}

The results from the Norwegian/Swedish meta-analysis were not replicated in the UK/USA meta-analysis. The lack of replication may indicate spurious results from the Scandinavian meta-analysis, however, we find discrepancies in use of fatigue instruments and accordingly distribution of fatigue between the different cohorts a more plausible explanation. Variation in measurement procedures and socio-cultural influenced differences in perception of fatigue can act as contributing factors. The fVAS version used in Norway and Sweden has the same wording and was applied in the same manner at all sites. The questionnaire that was used in USA differs both in wording and timeframe (last 3 days vs 1 week), and mean as well as distribution of fatigue levels were different from the other cohorts. The words 'Fatigue as bad as it can be' at the right end of the fVAS was used in the Norwegian, Swedish and UK cohorts, while the words 'No energy' was used in the USA cohort. It is not possible to estimate what this semantic difference means to the individual patients answering the question, but it is doubtless that it might influence the scoring. In addition, the centres in UK used a similar fVAS as in Norway and Sweden, but sent out the form by mail, while in Norway and Sweden the patients answered when visiting the rheumatology clinic.

In addition, underlying genetic heterogeneity may play a role. However, the MAF of associated variants at the *RTP4/MASPI* locus was intermediate in patients from the UK (MAF 0.21) and USA (MAF 0.20) compared with the Norwegian cohort (MAF 0.17) and the Swedish cohort (MAF 0.23). The strengths of the current study are inclusion of patients according to well-defined classification criteria and generic and robust measures of unidimensional fatigue.

In conclusion, the results of this GWAS point to genetic variants that may contribute to fatigue in pSS. The top associated variants, *RTP4/MASPI*, *ERN1* and *PRDM1*, are located at genes related to relevant functions and phenotypes that fit well into the concept of sickness behaviour with fatigue as a major element.

Author affiliations

¹Clinical Immunology Unit, Department of Internal Medicine, Stavanger University Hospital, Stavanger, Norway

²Department of Clinical Science, University of Bergen, Bergen, Norway

³Rheumatology and Science for Life Laboratory, Department of Medical Sciences, Uppsala University, Uppsala, Sweden

⁴Department of Rheumatology, Haukeland University Hospital, Bergen, Norway

⁵Department of Clinical Science, Lund University, Lund, Sweden

⁶Newcastle Upon Tyne Hospitals NHS Foundation Trust, Newcastle Upon Tyne, UK

⁷Translational and Clinical Research Institute, Newcastle University, Newcastle upon Tyne, UK

⁸Genes and Human Disease Research Program, Oklahoma Medical Research Foundation, Oklahoma City, Oklahoma, USA

⁹Arthritis and Clinical Immunology Research Program, Oklahoma Medical Research Foundation, Oklahoma City, Oklahoma, USA

¹⁰Translational Sciences, Rheumatology, Janssen Pharmaceutical Companies of Johnson and Johnson, New York, New York, USA

Acknowledgements The authors thank Pascal Pucholt for excellent technical assistance.

Contributors KBN and RO conceived the study. KBN, LR, RO, RKD, SJAJ, ET, TM, RJ and W-FN collected patient samples and clinical data. KBN, JI-K, AA and KB analysed the data. KBN, JI-K and RO wrote the manuscript. All authors critically evaluated the manuscript and accepted the final version. RO is the guarantor for this study.

Funding The study was supported by grants from Western Norway Regional Health Authority (Helse vest) (grants 912043, 911807, 911783), the Swedish Research Council (Dnr 2018-02399, Dnr 2016-01982), King Gustav the V:th 80-year foundation, the Swedish Rheumatism association, the Erik, Karin och Gösta Selanders foundation, Uppsala University, and the Swedish Society of Medicine. The UKPSSR was supported by the Medical Research Council (G0800629) and the British Sjögren's Syndrome Association. The OMRF Sjögren's Syndrome Cohort has been supported by the National Institutes of Health [grants R01AR050782 (KS), P50AR0608040 (KS), U19AI 082714 (KS), U01DE017593 (KS, AR), R01DE018209 (KS, AR) and R01AR065953 (CJL)]. Additional funding was obtained from the Phileona Foundation (KS, CJL) and the Oklahoma Medical Research Foundation (KS, CJL, AR).

Disclaimer The contents are the sole responsibility of the authors and do not necessarily represent the official views of the NIH.

Competing interests None declared.

Patient consent for publication Not applicable.

Ethics approval This study involves human participants and was approved by Regional Ethics Committee West, NorwayID: REK 2010/1455 Participants gave informed consent to participate in the study before taking part.

Provenance and peer review Not commissioned; externally peer reviewed.

Data availability statement Data are available on reasonable request. Genotype data are available on request from the authors on a collaborative basis.

Open access This is an open access article distributed in accordance with the Creative Commons Attribution Non Commercial (CC BY-NC 4.0) license, which permits others to distribute, remix, adapt, build upon this work non-commercially, and license their derivative works on different terms, provided the original work is properly cited, appropriate credit is given, any changes made indicated, and the use is non-commercial. See: <http://creativecommons.org/licenses/by-nc/4.0/>.

ORCID ID

Roald Omdal <http://orcid.org/0000-0002-6051-4658>

REFERENCES

- Krupp LB, Pollina DA. Mechanisms and management of fatigue in progressive neurological disorders. *Curr Opin Neurol* 1996;9:456–60.
- Arends S, Meiners PM, Moerman RV, *et al*. Physical fatigue characterises patient experience of primary Sjögren's syndrome. *Clin Exp Rheumatol* 2017;35:255–61.
- Haldorsen K, Bjelland I, Bolstad AI, *et al*. A five-year prospective study of fatigue in primary Sjögren's syndrome. *Arthritis Res Ther* 2011;13:R167.
- Dantzer R, Heijnen CJ, Kavelaars A, *et al*. The neuroimmune basis of fatigue. *Trends Neurosci* 2014;37:39–46.
- Omdal R. The biological basis of chronic fatigue: neuroinflammation and innate immunity. *Curr Opin Neurol* 2020;33:391–6.
- Hart BL. Biological basis of the behavior of sick animals. *Neurosci Biobehav Rev* 1988;12:123–37.
- Mengshoel AM, Norheim KB, Omdal R. Primary Sjögren's syndrome: fatigue is an ever-present, fluctuating, and uncontrollable lack of energy. *Arthritis Care Res* 2014;66:1227–32.
- Wang T, Yin J, Miller AH, *et al*. A systematic review of the association between fatigue and genetic polymorphisms. *Brain Behav Immun* 2017;62:230–44.
- Landmark-Høyvik H, Reinertsen KV, Loge JH, *et al*. The genetics and epigenetics of fatigue. *Pm R* 2010;2:456–65.
- Brække Norheim K, Imgenberg-Kreuz J, Jonsdottir K, *et al*. Epigenome-Wide DNA methylation patterns associated with fatigue in primary Sjögren's syndrome. *Rheumatology* 2016;55:1074–82.
- Lessard CJ, Li H, Adrianto I, *et al*. Variants at multiple loci implicated in both innate and adaptive immune responses are associated with Sjögren's syndrome. *Nat Genet* 2013;45:1284–92.
- Vitali C, Bombardieri S, Jonsson R, *et al*. Classification criteria for Sjögren's syndrome: a revised version of the European criteria proposed by the American-European consensus group. *Ann Rheum Dis* 2002;61:554–8.
- Seror R, Ravaut P, Bowman SJ, *et al*. EULAR Sjögren's syndrome disease activity index: development of a consensus systemic disease activity index for primary Sjögren's syndrome. *Ann Rheum Dis* 2010;69:1103–9.
- Wolfe F. Fatigue assessments in rheumatoid arthritis: comparative performance of visual analog scales and longer fatigue questionnaires in 7760 patients. *J Rheumatol* 2004;31:1896–902.
- Seror R, Theander E, Brun JG, *et al*. Validation of EULAR primary Sjögren's syndrome disease activity (ESSDAI) and patient indexes (ESSPRI). *Ann Rheum Dis* 2015;74:859–66.
- Purcell S, Neale B, Todd-Brown K, *et al*. PLINK: a tool set for whole-genome association and population-based linkage analyses. *Am J Hum Genet* 2007;81:559–75.
- 1000 Genomes Project Consortium, Auton A, Brooks LD, *et al*. A global reference for human genetic variation. *Nature* 2015;526:68–74.
- Cavalli-Sforza LL. The human genome diversity project: past, present and future. *Nat Rev Genet* 2005;6:333–40.
- Wang C, Zhan X, Bragg-Gresham J, *et al*. Ancestry estimation and control of population stratification for sequence-based association studies. *Nat Genet* 2014;46:409–15.
- Imgenberg-Kreuz J, Sandling JK, Almlöf JC, *et al*. Genome-Wide DNA methylation analysis in multiple tissues in primary Sjögren's syndrome reveals regulatory effects at interferon-induced genes. *Ann Rheum Dis* 2016;75:2029–36.
- Imgenberg-Kreuz J, Sandling JK, Björk A, *et al*. Transcription profiling of peripheral B cells in antibody-positive primary Sjögren's syndrome reveals upregulated expression of CX3CR1 and a type I and type II interferon signature. *Scand J Immunol* 2018;87:e12662.
- Westra H-J, Peters MJ, Esko T, *et al*. Systematic identification of trans eQTLs as putative drivers of known disease associations. *Nat Genet* 2013;45:1238–43.
- Décaillot FM, Rozenfeld R, Gupta A, *et al*. Cell surface targeting of mu-delta opioid receptor heterodimers by RTP4. *Proc Natl Acad Sci U S A* 2008;105:16045–50.
- Inoue K, Tsuda M. Microglia in neuropathic pain: cellular and molecular mechanisms and therapeutic potential. *Nat Rev Neurosci* 2018;19:138–52.
- Norheim KB, Jonsson G, Omdal R. Biological mechanisms of chronic fatigue. *Rheumatology* 2011;50:1009–18.
- Hoyo-Becerra C, Huebener A, Trippler M, *et al*. Concomitant interferon alpha stimulation and TLR3 activation induces neuronal expression of depression-related genes that are elevated in the brain of suicidal persons. *PLoS One* 2013;8:e83149.
- Schlaak JF, Trippler M, Hoyo-Becerra C, *et al*. Selective hyper-responsiveness of the interferon system in major depressive disorders and depression induced by interferon therapy. *PLoS One* 2012;7:e38668.
- Hoyo-Becerra C, Liu Z, Yao J, *et al*. Rapid regulation of Depression-Associated genes in a new mouse model mimicking Interferon- α -Related depression in hepatitis C virus infection. *Mol Neurobiol* 2015;52:318–29.
- Rönblom L. The importance of the type I interferon system in autoimmunity. *Clin Exp Rheumatol* 2016;34:21–4.
- Bodewes ILA, Björk A, Versnel MA, *et al*. Innate immunity and interferons in the pathogenesis of Sjögren's syndrome. *Rheumatology* 2019:key360.
- Takahashi M, Iwaki D, Kanno K, *et al*. Mannose-binding lectin (MBL)-associated serine protease (MASP)-1 contributes to activation of the lectin complement pathway. *J Immunol* 2008;180:6132–8.
- Larsen E, Brede C, Hjelle A, *et al*. Fatigue in primary Sjögren's syndrome: a proteomic pilot study of cerebrospinal fluid. *SAGE Open Med* 2019;7:205031211985039.
- Marcu MG, Doyle M, Bertolotti A, *et al*. Heat shock protein 90 modulates the unfolded protein response by stabilizing IRE1 α . *Mol Cell Biol* 2002;22:8506–13.
- Bårdsen K, Nilsen MM, Kvaløy JT, *et al*. Heat shock proteins and chronic fatigue in primary Sjögren's syndrome. *Innate Immun* 2016;22:162–7.

- 35 Ohara K, Shimizu K, Matsuura S, *et al.* Toll-Like receptor 4 signaling in trigeminal ganglion neurons contributes tongue-referred pain associated with tooth pulp inflammation. *J Neuroinflammation* 2013;10:139.
- 36 Franke A, McGovern DPB, Barrett JC, *et al.* Genome-Wide meta-analysis increases to 71 the number of confirmed Crohn's disease susceptibility loci. *Nat Genet* 2010;42:1118–25.
- 37 Gateva V, Sandling JK, Hom G, *et al.* A large-scale replication study identifies TNIP1, PRDM1, Jazf1, UHRF1BP1 and IL10 as risk loci for systemic lupus erythematosus. *Nat Genet* 2009;41:1228–33.
- 38 Omdal R, Gunnarsson R. The effect of interleukin-1 blockade on fatigue in rheumatoid arthritis--a pilot study. *Rheumatol Int* 2005;25:481–4.
- 39 Harboe E, Tjensvoll AB, Vefring HK, *et al.* Fatigue in primary Sjögren's syndrome--a link to sickness behaviour in animals? *Brain Behav Immun* 2009;23:1104–8.
- 40 Cavelti-Weder C, Furrer R, Keller C, *et al.* Inhibition of IL-1beta improves fatigue in type 2 diabetes. *Diabetes Care* 2011;34:e158.
- 41 Hong DS, Janku F, Naing A, *et al.* Xilonix, a novel true human antibody targeting the inflammatory cytokine interleukin-1 alpha, in non-small cell lung cancer. *Invest New Drugs* 2015;33:621–31.
- 42 Norheim KB, Harboe E, Gøransson LG, *et al.* Interleukin-1 Inhibition and Fatigue in Primary Sjögren's Syndrome – A Double Blind, Randomised Clinical Trial. *PLoS One* 2017;7:e30123.
- 43 Reinertsen KV, Grenaker Alnæs GI, Landmark-Høyvik H, *et al.* Fatigued breast cancer survivors and gene polymorphisms in the inflammatory pathway. *Brain Behav Immun* 2011;25:1376–83.
- 44 Wang XS, Williams LA, Krishnan S, *et al.* Serum sTNF-R1, IL-6, and the development of fatigue in patients with gastrointestinal cancer undergoing chemoradiation therapy. *Brain Behav Immun* 2012;26:699–705.
- 45 Becker K, Kohen R, Lee R, *et al.* Poststroke fatigue: hints to a biological mechanism. *J Stroke Cerebrovasc Dis* 2015;24:618–21.
- 46 Louati K, Berenbaum F. Fatigue in chronic inflammation - a link to pain pathways. *Arthritis Res Ther* 2015;17:254.
- 47 Lee C-H, Giuliani F. The role of inflammation in depression and fatigue. *Front Immunol* 2019;10:1696.
- 48 van Hoogmoed D, Fransen J, Bleijenberg G, *et al.* Physical and psychosocial correlates of severe fatigue in rheumatoid arthritis. *Rheumatology* 2010;49:1294–302.
- 49 Skoie IM, Dalen I, Ternowitz T, *et al.* Fatigue in psoriasis: a controlled study. *Br J Dermatol* 2017;177:505–12.
- 50 Grimstad T, Norheim KB, Isaksen K, *et al.* Fatigue in newly diagnosed inflammatory bowel disease. *J Crohns Colitis* 2015;9:725–30.