

Nine new species of the spider family Araneidae (Arachnida, Araneae) from Xishuangbanna, Yunnan, China

Xiaoqi Mi¹, Shuqiang Li²

¹ College of Agriculture and Forestry Engineering and Planning, Guizhou Provincial Key Laboratory of Biodiversity Conservation and Utilization in the Fanjing Mountain Region, Tongren University, Tongren 554300, Guizhou, China ²Institute of Zoology, Chinese Academy of Sciences, Beijing 100101, China

Corresponding author: Shuqiang Li (lisq@ioz.ac.cn)

Academic editor: Zhiyuan Yao | Received 22 August 2021 | Accepted 25 October 2021 | Published 19 November 2021

<http://zoobank.org/DE29D6A5-E9BA-4FB4-92C2-6985AE680753>

Citation: Mi X, Li S (2021) Nine new species of the spider family Araneidae (Arachnida, Araneae) from Xishuangbanna, Yunnan, China. ZooKeys 1072: 49–81. <https://doi.org/10.3897/zookeys.1072.73345>

Abstract

Nine new species of the orb-weaver spider family Araneidae Clerck, 1757 from Menglun Town, Xishuangbanna, Yunnan, China are described: *Acusilas tongi* sp. nov. (♂♀), *Chorizopes yui* sp. nov. (♂♀), *Chorizopesoides guoi* sp. nov. (♂♀), *Deione cheni* sp. nov. (♀), *D. yangi* sp. nov. (♂♀), *Hypsosinga pulla* sp. nov. (♂♀), *Mangora baii* sp. nov. (♂♀), *M. cephalo* sp. nov. (♂♀) and *Milonia gemella* sp. nov. (♂♀). The genus *Milonia* Thorell, 1890 is recorded from China for the first time. The previous description of *Chorizopesoides wulingensis* (Yin, Wang & Xie, 1994) from Libo County, Guizhou by Mi and Wang (2018) refers to *Chorizopesoides annasestakovae* sp. nov. (♂♀). Diagnostic photos of the habitus and copulatory organs of the new species are provided.

Keywords

Morphology, new record, orb-weaver spider, taxonomy

Introduction

The spider family Araneidae Clerck, 1757 is the third largest family in Araneae, with a total of 3067 species in 177 genera worldwide (WSC 2021). In China, 402 species in 50 genera have been recorded (Li 2020, Yao and Li 2021, Li et al. 2021).

Xishuangbanna Tropical Botanical Garden (XTBG) in Menglun Town lies in Mengla County, Yunnan Province, southwest China. A total of 782 spider species have

been recorded from this area through an “All Species Inventory” (Li 2020). The number of Araneidae species of this region continually increases due to ongoing research, e.g. – a taxonomic revision of the orb-weaver genus *Eriovixia* Archer, 1951 from this area indicated 13 species, 7 new to science by Mi and Li (2021). This paper is the second paper of our work on Araneidae from the region. Nine new species of the genera *Acusilas* Simon, 1895, *Chorizopes* O. Pickard-Cambridge, 1871, *Chorizopesoides* Mi & Wang, 2018, *Deione* Thorell, 1898, *Hypsosinga* Ausserer, 1871, *Mangora* O. Pickard-Cambridge, 1889 and *Milonia* Thorell, 1890 are described.

Materials and methods

All specimens were collected by beating shrubs, fogging, or hand collecting and are preserved in 75% ethanol. Type specimens of new species are deposited in the Institute of Zoology, Chinese Academy of Sciences (IZCAS) in Beijing. The type specimens of *Chorizopesoides annasestakovae* sp. nov. and comparative material of *Deione lingulata* Han, Zhu & Levi, 2009 are deposited in Tongren University (TRU). The specimens were examined with an Olympus SZ51 stereomicroscope. The epigyna were cleared in trypsin enzyme solution for examination and imaging. The left male palps were dissected in ethanol for examination, description, and imaging. Photos of the habitus and copulatory organs were taken with a Kuy Nice CCD mounted on an Olympus BX53 compound microscope. Compound focus images were generated using Helicon Focus v. 6.7.1.

All measurements are given in millimeters. Leg measurements are given as: total length (femur, patella + tibia, metatarsus, tarsus). References to figures in the cited papers are listed in lowercase (fig. or figs); figures in this paper are noted with an initial capital (Fig. or Figs). Abbreviations used in the text and figures are as follows: ALE anterior lateral eye; AME anterior median eye; BE broken embolus; C conductor; CD copulatory duct; CO copulatory opening; E embolus; ET embolic thorn; FD fertilization duct; MA median apophysis; MOA median ocular area; MP median plate; PLE posterior lateral eye; PME posterior median eye; SA subterminal apophysis; Sc scape; Sp spermatheca; TA terminal apophysis; TE tegular extension.

Taxonomy

Family Araneidae Clerck, 1757

Genus *Acusilas* Simon, 1895

Acusilas Simon, 1895: 785; Schmidt and Scharff 2008: 7.

Type species. *Acusilas coccineus* Simon, 1895 from Indonesia

Comments. Nine *Acusilas* species from Asia and one species from Africa are known.

***Acusilas tongi* sp. nov.**

<http://zoobank.org/9ED4228E-0711-4E28-A95F-8C4FC129B2EC>

Figs 1, 2, 20A

Type material. **Holotype.** ♂ (IZCAS-Ar42503), CHINA: Yunnan, Xishuangbanna, Mengla County, Menglun Township, Menglun Nature Reserve, primary tropical seasonal rainforest (21°57.43'N, 101°12.28'E, ca 792 m), 19–25. XI.2006, G. Zheng leg. **Paratypes:** 1♂ (IZCAS-Ar42504), rubber plantation (approx. 20 years old) (21°54.47'N, 101°15.98'E, ca 570 m), 5–12. XI.2006, G. Zheng leg.; 1♀ (IZCAS-Ar42505), rubber plantation (approx. 20 years old) (21°54.65'N, 101°16.26'E, ca 570 m), 5–12. XII.2006, G. Zheng leg.; 1♀ (IZCAS-Ar42506), secondary tropical seasonal moist forest (21°54.61'N, 101°17.01'E, ca 630 m), 28. VII.2007, G. Zheng leg.; 1♂ (IZCAS-Ar42507), low evergreen forest along G213 roadside (21°53.79'N, 101°17.15'E, ca 590 m), 27. XI.2009, G. Tang leg.; 1♀ (IZCAS-Ar42508), Xishuangbanna Tropical Botanical Garden, grapefruit plantation (21°54.07'N, 101°16.36'E, ca 540 m), 22. VII.2018, X. Mi leg.; 1♂ (IZCAS-Ar42509), Xishuangbanna Tropical Botanical Garden, Yulinjiegou scenic spot (21°55.13'N, 101°16.08'E, ca 550 m), 29. VII.2018, X. Mi leg.; 1♀ (IZCAS-Ar42510), Teak plantation (21°54.03'N, 101°16.39'E, ca 550 m), 10. VIII.2018, Z. Bai et al. leg.; 1♂ (IZCAS-Ar42511), site 5 around the dump (21°54.37'N, 101°16.07'E, ca 620 m), 6. V.2019, Y. Tong leg.

Etymology. The species is named after Dr. Yanfeng Tong (Shenyang Normal University), one of the collectors of the type specimens; noun (name) in genitive case.

Diagnosis. The new species resembles *A. malaccensis* in habitus but can be distinguished by the: 1) interrupted stripes on the female abdomen vs. uninterrupted (Murphy and Murphy, 1983: fig. 16); 2) spermatheca ovoid vs. globular (Murphy and Murphy, 1983: fig. 12).

Description. **Male** (holotype, Figs 1A, B, 2D, E, 20A). Total length 2.15. Carapace 1.15 long, 0.90 wide. Abdomen 1.05 long, 1.15 wide. Clypeus 0.08 high. Eye sizes and interdistances: AME 0.13, ALE 0.05, PME 0.10, PLE 0.08, AME-AME 0.08, AME-ALE 0.03, PME-PME 0.10, PME-PLE 0.08, MOA length 0.28, anterior width 0.28, posterior width 0.28. Leg measurements: I 2.75 (0.90, 0.95, 0.50, 0.40), II 2.55 (0.80, 0.85, 0.50, 0.40), III 1.65 (0.55, 0.55, 0.30, 0.25), IV 2.25 (0.75, 0.75, 0.40, 0.35). Carapace pear-shaped, yellowish brown, cervical groove obvious, posterior eyes surrounded with black. Chelicerae yellowish brown, four promarginal teeth, lacking retromarginal teeth. Endites, labium yellow. Sternum yellow, with sparse, dark setae. Legs yellowish brown without annulations. Abdomen blunt anteriorly, pointed posteriorly, about 1.1 times wider than long, dorsum grayish yellow with irregular dark patches; venter grayish yellow with darker spots forming inconspicuous stripes. Spinnerets yellow.

Palp (Figs 1A–C, 20A): median apophysis prominent, about 4/5 length of cymbium; embolus about two times length of cymbium, runs anti-clockwise, curved about 180° from its origin, with two thorns at base (embolic thorn, stipes extended), distal end pointed toward tip of median apophysis.

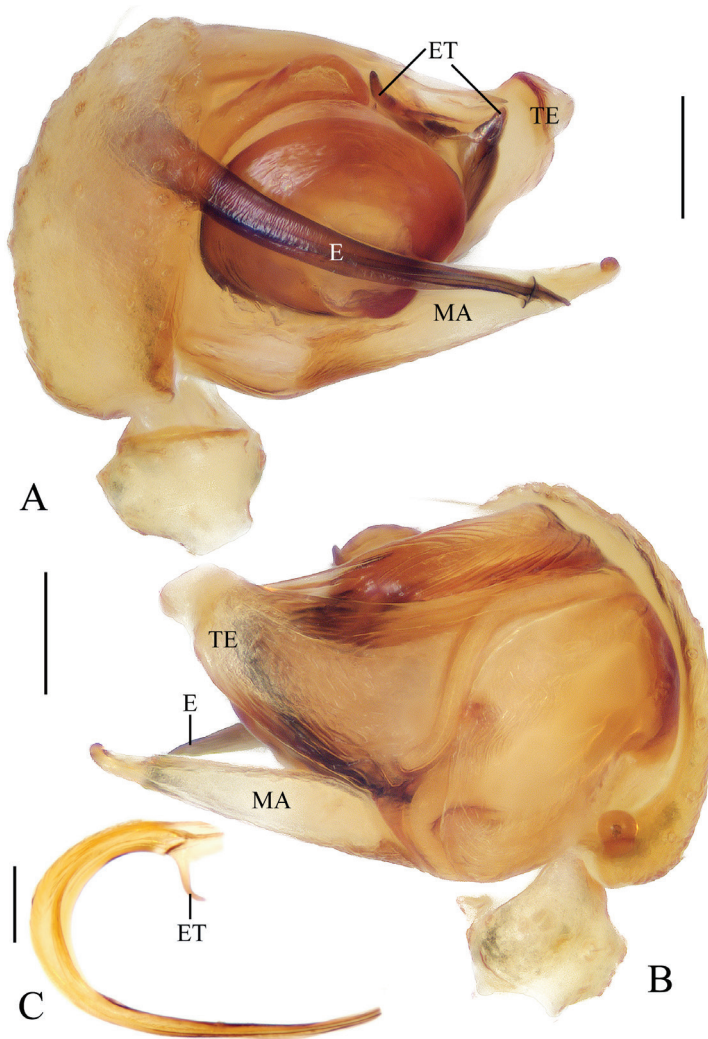


Figure 1. *Acusilas tongi* sp. nov., male palp **A, B** holotype **C** broken embolus **A** prolateral view **B** retrolateral view **C** broken embolus in female paratype's epigyne. Scale bars: 0.1mm

Female (paratype IZCAS-Ar42505, Fig. 2A–C, F–H). Total length 8.20. Carapace 4.20 long, 3.20 wide. Abdomen 5.10 long, 4.40 wide. Clypeus 0.15 high. Eye sizes and interdistances: AME 0.18, ALE 0.13, PME 0.18, PLE 0.15, AME-AME 0.22, AME-ALE 0.10, PME-PME 0.25, PME-PLE 0.18, MOA length 0.55, anterior width 0.55, posterior width 0.55. Leg measurements: I 12.00 (3.60, 4.50, 2.70, 1.20), II 11.30 (3.50, 4.00, 2.60, 1.20), III 7.30 (2.50, 2.60, 1.30, 0.90), IV 11.10 (3.50, 4.00, 2.50, 1.10). Carapace pear-shaped, yellow, cervical groove obvious, posterior eyes surrounded with black. Chelicerae yellow, four promarginal teeth, three retromarginal teeth. Endites and labium yellow. Sternum yellow, with sparse, dark setae. Legs: femur, patella, and basal 1/4 of tibia yellow, remaining 3/4 of tibia, metatarsus, and tarsus

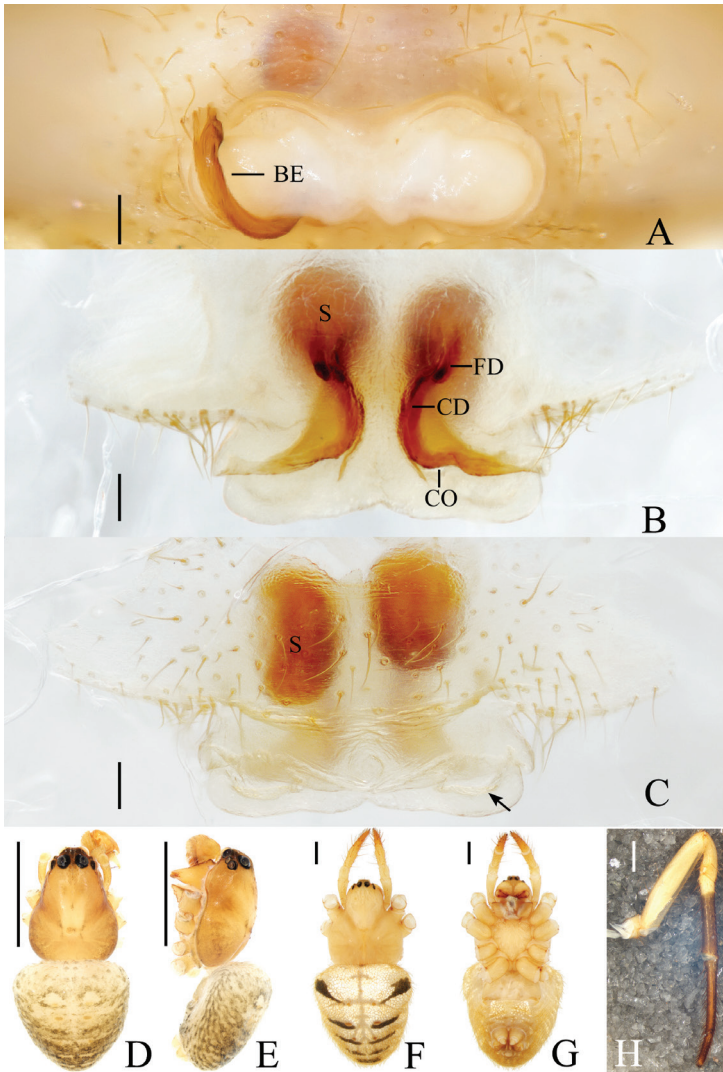


Figure 2. *Acusilas tongi* sp. nov. **A–C, F–H** female paratype IZCAS-Ar42505 **D, E** holotype **A** epigyne, ventral view **B** *ibid.*, posterior view **C** *ibid.*, anterior view **D** habitus, dorsal view **E** *ibid.*, lateral view **F** *ibid.*, dorsal view **G** *ibid.*, ventral view **H** left leg I, prolateral view. Scale bars: 0.1mm (**A–C**); 1mm (**D–H**)

dark brown. Abdomen triangular in dorsal view, slightly longer than wide, yellow with nine transverse black stripes; venter yellow with dozens of white spots medially.

Epigyne (Fig. 2A–C): wider than long, with narrow rim anteriorly and laterally, concave anteriorly; posterior lip hooked (see arrow in Fig. 2C); copulatory openings narrow, located posteriorly; copulatory ducts shorter than spermatheca; spermathecae oval.

Variation. Total length: ♂♂ 1.75–2.25; ♀♀ 8.2–10.80.

Distribution. China (Yunnan).

Genus *Chorizopes* O. Pickard-Cambridge, 1871

Chorizoopes O. Pickard-Cambridge, 1871: 738; Tikader 1982: 157; Kallal and Hormiga 2019: 473

Type species. *Chorizoopes frontalis* O. Pickard-Cambridge, 1871 from Sri Lanka

Comments. A total of 29 species of *Chorizopes* are known from China, India, Pakistan, Sri Lanka, Myanmar, Korea, Japan, and Madagascar. Illustrations indicate that the following species may belong to other genera: *C. calciopae* (Simon, 1895), *C. kastoni* Gajbe & Gajbe, 2004, *C. khandaricus* Gajbe, 2005, *C. khedaensis* Reddy & Patel, 1993, *C. pateli* Reddy & Patel, 1993, *C. quadrituberculata* Roy, Sen, Saha & Raychaudhuri, 2014, *C. rajanpurensis* Mukhtar & Tahir, 2013, *C. tikaderi* Sadana & Kaur, 1974.

Chorizopes yui sp. nov.

<http://zoobank.org/18204F0A-7C55-4B53-BFC7-3074E9C74E6B>

Figs 3, 4

Type material. *Holotype.* ♂ (IZCAS-Ar42512), CHINA: Yunnan, Xishuangbanna, Mengla County, Menglun Township, Menglun Nature Reserve, high plantations near G213 roadside (21°54.12'N, 101°16.93'E, ca 590 m), 24.XI.2009, G. Tang leg. *Paratypes:* 1♂ (IZCAS-Ar42513), *Anogeissus acuminata* plantation (approx. 20 years old) (21°53.99'N, 101°16.81'E, ca 610 m), 19.VIII.2007, G. Zheng leg.; 2♀ (IZCAS-Ar42514–42515), garbage dump, secondary tropical forest (21°54.38'N, 101°16.82'E, ca 620 m), 23.XI.2009, G. Tang leg.; 1♂ (IZCAS-Ar42516), Lüshilin Forest Park, limestone tropical seasonal rainforest (21°54.56'N, 101°16.86'E, ca 610 m), 29.XI.2009, G. Tang leg.; 1♀ (IZCAS-Ar42517), secondary tropical forest, bamboo plantation along G213 roadside (21°53.82'N, 101°16.99'E, ca 610 m), 3.VIII.2018, Z. Bai leg.; 1♂ (IZCAS-Ar42518), Xishuangbanna Tropical Botanical Garden, site 1 around the dump (21°53.28'N, 101°16.75'E, ca 630 m), 25.IV.2019, Z. Bai leg.; 1♀ (IZCAS-Ar42519), Xishuangbanna Tropical Botanical Garden, Baihuayuan (21°55.60'N, 101°14.87'E, ca 540 m), 3.V.2019 night, C. Wang leg.

Etymology. The species is named after Dr. Hao Yu, one of the collectors of the type specimens; noun (name) in genitive case.

Diagnosis. The new species can be distinguished from congeneric species by the: 1) yellowish white abdomen with a dark rhomboid patch; 2) triangular copulatory openings; 3) translucent, thread-like terminal apophysis; 4) fan-shaped median apophysis in prolateral view.

Description. Male (holotype, Figs 3A, B, D, 4D, E). Total length 3.60. Carapace 1.60 long, 1.00 wide. Abdomen 2.00 long, 1.20 wide. Clypeus 0.10 high. Eye sizes and interdistances: AME 0.13, ALE 0.08, PME 0.10, PLE 0.09, AME-AME 0.13, AME-ALE 0.45, PME-PME 0.18, PME-PLE 0.35, MOA length 0.33, anterior width 0.35, posterior width 0.35. Leg measurements: I 3.65 (1.05, 1.30, 0.80, 0.50), II

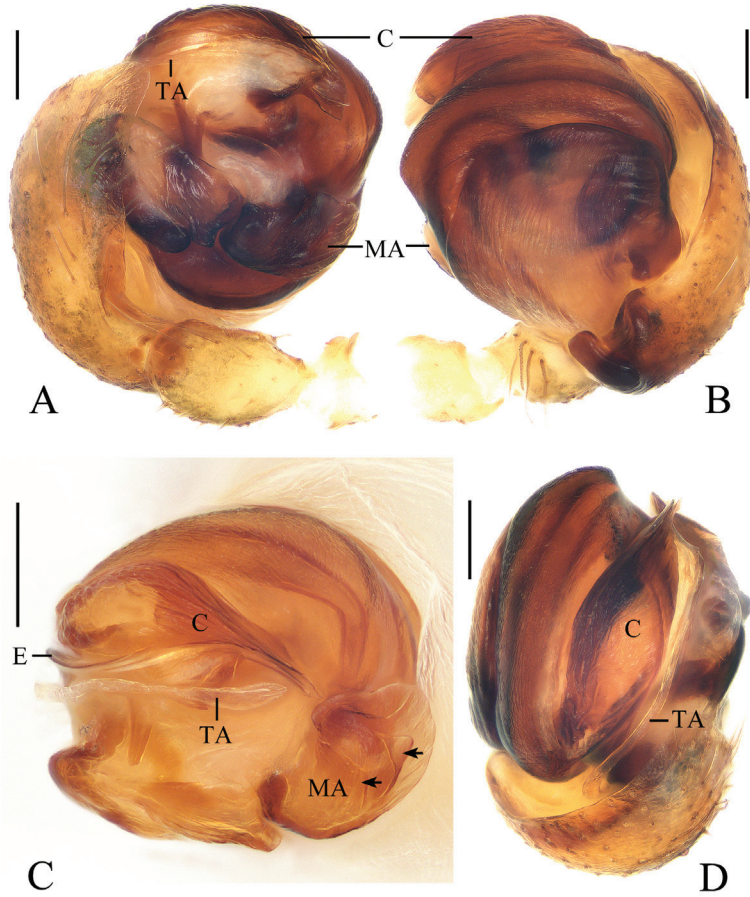


Figure 3. *Chorizopes yui* sp. nov., male palp **A, B, D** holotype **C** male paratype IZCAS-Ar42513. **A** prolateral view **B** retrolateral view **C** expanded in lactic acid **D** apical view. Scale bars: 0.1mm

3.75 (1.05, 1.45, 0.75, 0.50), III 2.25 (0.60, 0.75, 0.45, 0.45), IV 4.15 (1.15, 1.50, 0.90, 0.60). Carapace oval, brown, elevated, cervical groove inconspicuous. Chelicerae brown, seven promarginal teeth. Endites yellow, labium triangular, brown. Sternum triangular, yellowish brown, with pale setae. Legs yellow with brown annulations. Abdomen cylindrical, with pair of lateral tubercles and two vertically arranged tubercles posteriorly, grayish yellow with dark rhomboid patch; venter grayish yellow with large, white patch medially. Spinnerets yellowish brown.

Palp (Fig. 3): paracymbium flattened; median apophysis fan-shaped in prolateral view, with two lamellar spurs (see arrows in Fig. 3C); embolus length about equal to bulb diameter, curved, slightly flattened; conductor about 4/5 length of bulb diameter in prolateral view; terminal apophysis translucent, slender, curved, length almost equal to that of embolus.

Female (paratype IZCAS-Ar42514, Fig. 4A–C, F, G). Total length 6.50. Carapace 2.10 long, 1.40 wide. Abdomen 4.70 long, 2.60 wide. Clypeus 0.13 high. Eye sizes

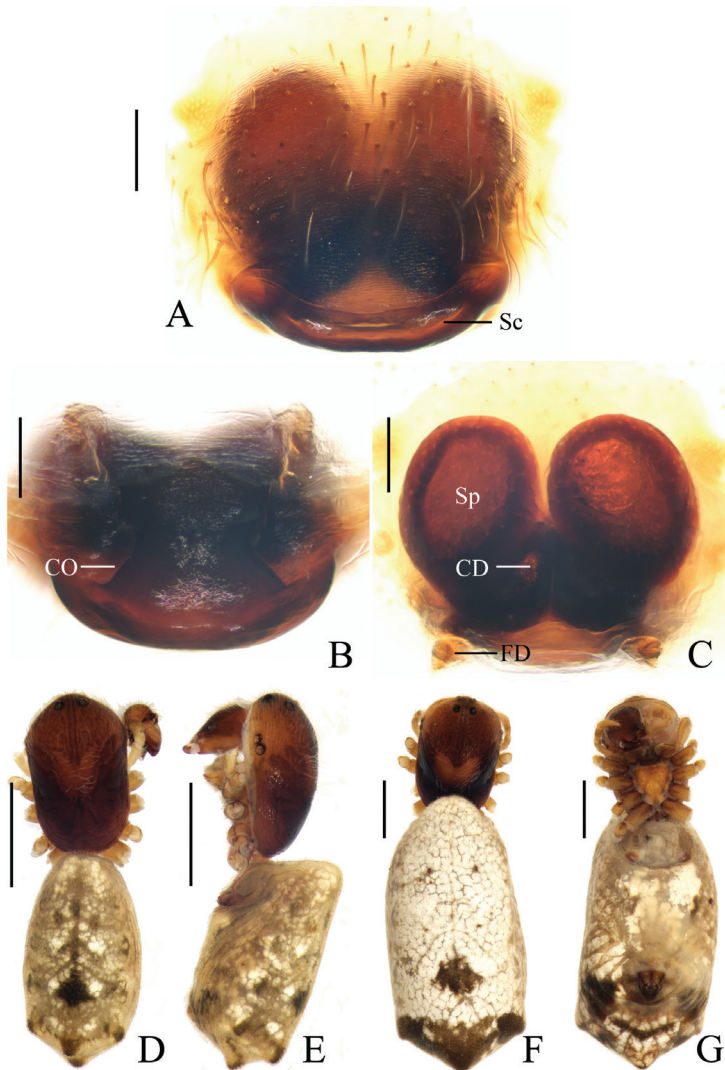


Figure 4. *Chorizopes yui* sp. nov. **A–C, F, G** female paratype IZCAS-Ar42514 **D, E** holotype **A** epigyne, ventral view **B** *ibid.*, posterior view **C** vulva, dorsal view **D** habitus, dorsal view **E** *ibid.*, lateral view **F** *ibid.*, dorsal view **G** *ibid.*, ventral view. Scale bars: 0.1mm (**A–C**); 1mm (**D–G**)

and interdistances: AME 0.13, ALE 0.08, PME 0.09, PLE 0.10, AME-AME 0.20, AME-ALE 0.53, PME-PME 0.25, PME-PLE 0.73, MOA length 0.40, anterior width 0.43, posterior width 0.43. Leg measurements: I 4.70 (1.35, 1.70, 1.05, 0.60), II 4.60 (1.35, 1.65, 1.00, 0.60), III 3.15 (0.85, 1.10, 0.60, 0.60), IV 5.70 (1.60, 2.15, 1.25, 0.70). Habitus like in male, coloration of abdomen slightly paler.

Epigyne (Fig. 4A–C): about 1.1 times wider than long; scape about four times wider than long, strongly rebordered; copulatory openings triangular, located posteriorly; copulatory ducts short, twisted; spermathecae ovoid, touching each other.

Variation. Total length: ♂♂ 2.90–3.60; ♀♀ 6.00–6.50.

Distribution. China (Yunnan).

Genus *Chorizopesoides* Mi & Wang, 2018

Chorizopesoides: Mi and Wang 2018: 82

Type species *Chorizopes wulingensis* Yin, Wang and Xie, 1994 from Hunan, China

Comments. The only two species that have been described in this genus were both recorded from China (WSC 2021).

Chorizopesoides guoi sp. nov.

<http://zoobank.org/18783528-2199-4DDB-9168-3FED612331CA>

Figs 5, 6, 20B

Type material. Holotype. ♂ (IZCAS-Ar42520), CHINA: Yunnan, Xishuangbanna, Mengla County, Menglun Town, Menglun Nature Reserve, primary tropical seasonal rainforest (21°55.04'N, 101°16.50'E, ca 560 m), 22.VII.2007, G. Zheng leg.

Paratypes: 2♂3♀ (IZCAS-Ar42521–42525), same data as holotype; 1♀ (IZCAS-Ar42526), primary tropical seasonal rainforest (21°57.43'N, 101°12.28'E, ca 792 m), 1–15.VI.2007, G. Zheng leg.; 1♂1♀ (IZCAS-Ar42527–42528), secondary tropical seasonal moist forest (21°54.72'N, 101°16.94'E, ca 650 m), 27.VII.2007, G. Zheng leg.; 3♂2♀ (IZCAS-Ar42529–42533), secondary tropical seasonal moist forest (21°54.61'N, 101°17.01'E, ca 630 m), 28.VII.2007, G. Zheng leg.

Other material examined. 1♀ (IZCAS-Ar42534), Xishuangbanna Tropical Botanical Garden, eastern part (21°54.07'N, 101°16.36'E, ca 540 m), 16.VII.2018, X. Mi leg.; 1♀ (IZCAS-Ar42535), Xishuangbanna Tropical Botanical Garden, vine garden (21°55.76'N, 101°15.73'E, ca 490 m), 17.VII.2018, night, X. Mi leg.; 1♀ (IZCAS-Ar42536), G213 roadside near 68 km (21°53.82'N, 101°16.79'E, ca 620 m), 27.VII.2018, X. Mi leg.

Comparative material. *Chorizopesoides wulingensis*, **Holotype** ♀, CHINA: Hunan, Sangzhi County, Nanmuping, 17.XIII.1984, J.F. Wang leg. (Fig. 7)

Etymology. The species is named after Professor Guo Zheng, one of the collectors of the type specimens; noun (name) in genitive case.

Diagnosis. The new species resembles *C. wulingensis* and *C. annasestakovae* sp. nov. in appearance, but females can be distinguished from both by the: 1) copulatory ducts spirally coiled vs. circular (Fig. 7C; Mi and Wang, 2018: fig. 3E); 2) pale abdomen with distinct black stripes vs. dark brown abdomen with indistinct stripes; 3) pale cephalon behind eyes vs. dark cephalon with two small, pale spots (Fig. 7D) or without spots (Mi and Wang, 2018: fig. 1C). From *C. wulingensis* by the: 1) scape shorter than half a spermatheca diameter vs. longer than half a spermatheca diameter (Fig. 7); 2) median plate narrower than a spermatheca diameter vs. wider than a sper-

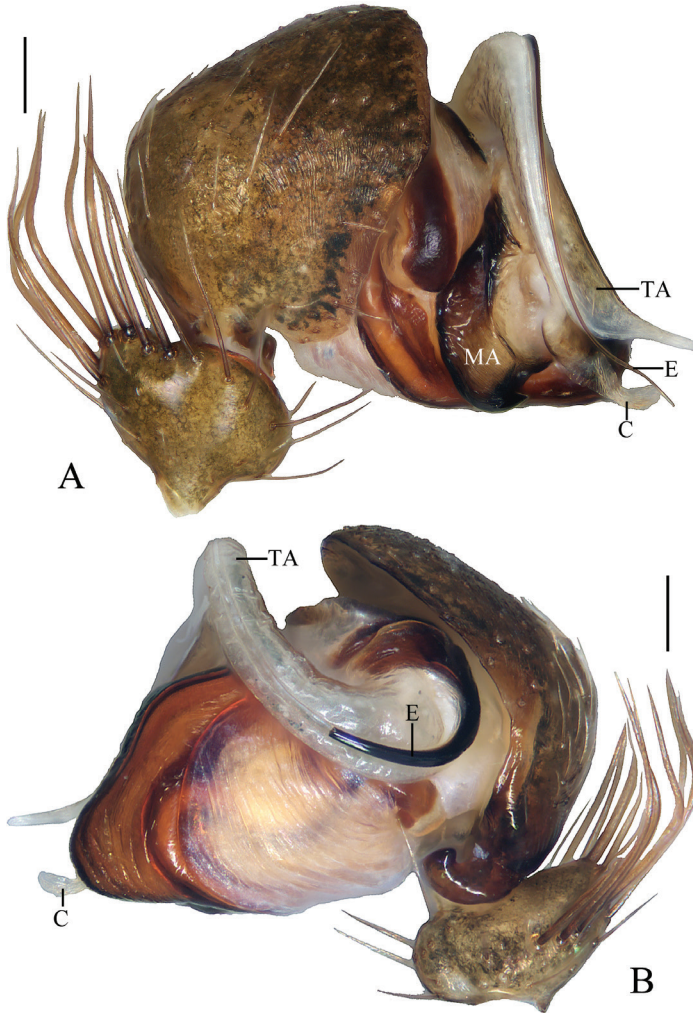


Figure 5. *Chorizopesoides guoi* sp. nov., holotype, male palp **A** prolateral view **B** retrolateral view (embolus broken). Scale bars: 0.1mm

matheca diameter (Fig. 7); it can be distinguished from *C. annastakovae* sp. nov. by the: 1) scape not concave vs. concave (Mi and Wang, 2018: fig. 3D–E); 2) shape of the epigyne wider than long vs. as long as wide; 3) palpal tibia wider than long with a cluster of macrosetae vs. as long as tibia width without conspicuous macrosetae (Mi and Wang, 2018: fig. 3A, C); 4) tegulum triangularly elongated (retrolateral view) vs. not so elongated and rounder (Mi and Wang, 2018: fig. 3C); 5) median apophysis slender, two times longer than wide vs. shorter and higher (Mi and Wang, 2018: fig. 3A); 6) tip of the embolus extending beyond the edge of the tegulum (apical view) vs. shorter embolus, not reaching the edge of the tegulum (Mi and Wang, 2018: fig. 3B).

Description. Male (holotype, Figs 5A, B, 6D, E, 20B). Total length 2.90. Carapace 1.60 long, 0.95 wide. Abdomen 1.65 long, 1.40 wide. Clypeus 0.18 high. Eye

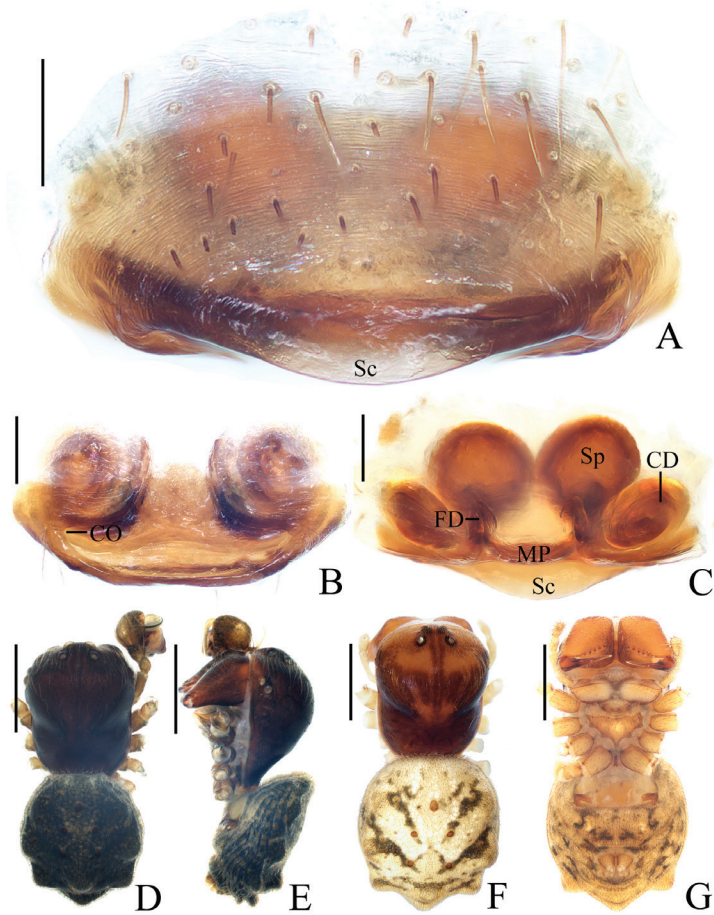


Figure 6. *Chorizopesoides guoi* sp. nov. **A–C, E, F** female paratype IZCAS-Ar42521 **D, E** holotype **A** epigyne, ventral view **B** ibid., posterior view **C** vulva, dorsal view **D** habitus, dorsal view **E** ibid., lateral view **F** habitus, dorsal view **G** ibid., ventral view. Scale bars: 0.1mm (**A–C**); 1mm (**D–G**)

sizes and interdistances: AME 0.13, ALE 0.08, PME 0.10, PLE 0.08, AME-AME 0.13, AME-ALE 0.40, PME-PME 0.25, PME-PLE 0.43, MOA length 0.30, anterior width 0.33, posterior width 0.43. Leg measurements: I 3.41 (0.95, 1.13, 0.80, 0.53), II 3.46 (0.90, 1.15, 0.88, 0.53), III 2.40 (0.70, 0.80, 0.50, 0.40), IV 3.29 (0.95, 1.13, 0.73, 0.48). Carapace rectangular, dark brown, with sparse, pale setae, cervical groove obvious. Chelicerae dark brown, five promarginal teeth. Endites wider than long, dark brown basally, paler distally, labium wider than long, triangular, dark brown. Sternum triangular, dark brown, paler medially. Legs yellow with brown annulations. Abdomen about 1.2 times longer than wide, with three pairs of lateral tubercles and three vertical caudal tubercles, dorsum grayish black with lots of brown sigilla; venter grayish black. Spinnerets yellowish brown.

Palp (Figs 5, 20B): tibia with a cluster of macrosetae (approx. 12) distal-dorsally, macrosetae about 1.5 times length of tibia; median apophysis about 1/2 length of bulb

diameter in apical view, distal end pointed; embolus extremely long, slender, more than two times length of bulb diameter; terminal apophysis membranous, equal in length to embolus; conductor membranous, shorter than median apophysis in prolateral view.

Female (paratype IZCAS-Ar42521, Fig. 6A–C, E, F). Total length 3.55. Carapace 1.75 long, 1.40 wide. Abdomen 2.00 long, 1.75 wide. Clypeus 0.15 high. Eye sizes and interdistances: AME 0.13, ALE 0.08, PME 0.10, PLE 0.08, AME-AME 0.15, AME-ALE 0.45, PME-PME 0.25, PME-PLE 0.48, MOA length 0.30, anterior width 0.30, posterior width 0.40. Leg measurements: I 3.31 (0.90, 1.10, 0.78, 0.53), II 3.19 (0.88, 1.08, 0.75, 0.48), III 2.46 (0.70, 0.83, 0.48, 0.45), IV 3.45 (1.00, 1.25, 0.75, 0.45). Habitus as in male, coloration much paler.

Epigyne (Fig. 6A–C): about two times wider than long, scape shorter than half a spermatheca diameter; copulatory openings concave, located at lateral side of posterior surface; copulatory ducts long, coiled 720°; spermathecae globular, touching each other.

Variation. Total length: ♂♂ 2.55–3.05; ♀♀ 3.25–4.85.

Distribution. China (Yunnan).

***Chorizopesoides annasestakovae* sp. nov.**

<http://zoobank.org/DDE89FA3-8775-4EC0-ABDC-05C59F23E69F>

Chorizopesoides wulingensis Mi & Wang, 2018: 82, figs 1A–D, 2A–C, 3A–E (misidentified).

Type material. Holotype. ♂ (TRU), CHINA: Guizhou, Qiannan, Libo County, Dotang Township, Yaosuo Village, Bizuo (25°16.84'N, 108°4.47'E, ca 601 m), 7–8. VIII.2013, X. Mi & M. Liao leg. (MXQ20130807). **Paratype** 1♀ (TRU), same data as holotype.

Etymology. The specific name comes from Dr. Anna Šestáková, who confirmed the new species; noun (name) in genitive case.

Diagnosis. See *Chorizopesoides guoi* sp. nov.

Description. See Mi and Wang (2018).

Distribution. China (Guizhou).

Comments. Compared to the holotype of *C. wulingensis*, the previous description of *C. wulingensis* from Libo County, Guizhou by Mi and Wang (2018) refers to *C. annasestakovae* sp. nov.

Genus *Deione* Thorell, 1898

Deione Thorell, 1898: 365; *Deione* Han et al. 2009: 56; Mi et al. 2010: 35.

Type species *Deione thoracica* Thorell, 1898 from Myanmar

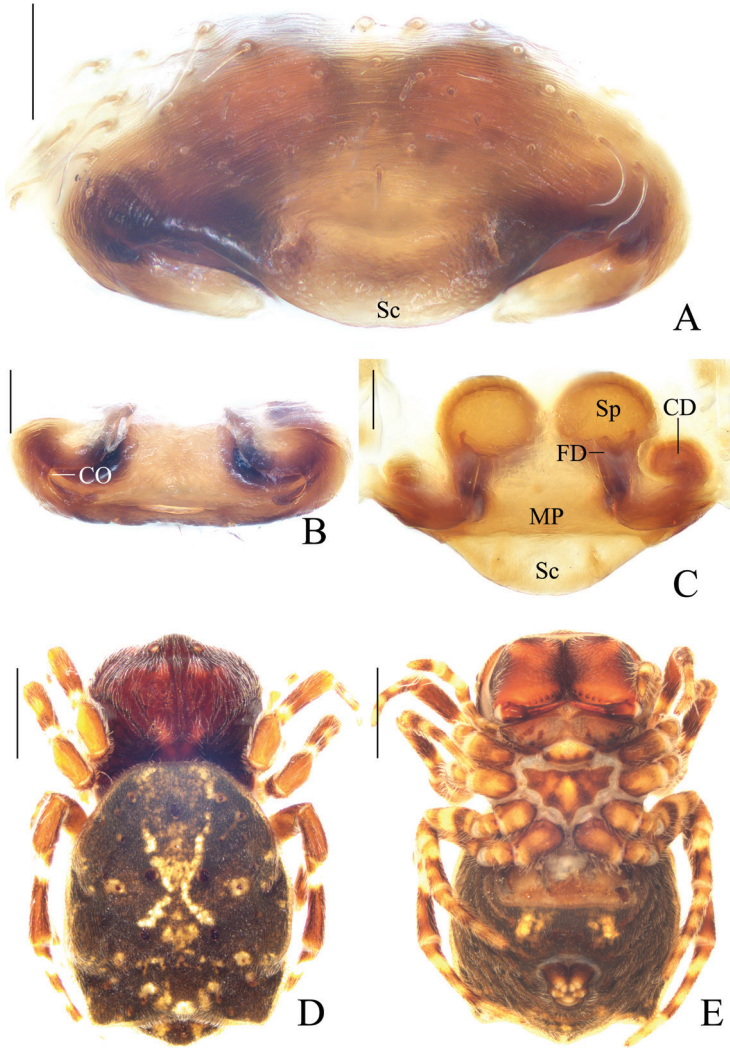


Figure 7. *Chorizopesoides wulingensis*, holotype **A** epigyne, ventral view **B** ibid., posterior view **C** vulva, dorsal view **D** habitus, dorsal view **E** ibid., ventral view. Scale bars: 0.1mm (**A–C**); 1mm (**D, E**)

***Deione cheni* sp. nov.**

<http://zoobank.org/13408A71-9FA3-4B2F-BAA6-1919E989F767>

Fig 8

Type material. Holotype. ♀ (IZCAS-Ar42537), CHINA: Yunnan, Xishuangbanna, Mengla County, Menglun Town, Menglun Nature Reserve, secondary tropical seasonal moist forest (21°54.72'N, 101°16.94'E, ca 650 m), 16–31.V.2007, G. Zheng

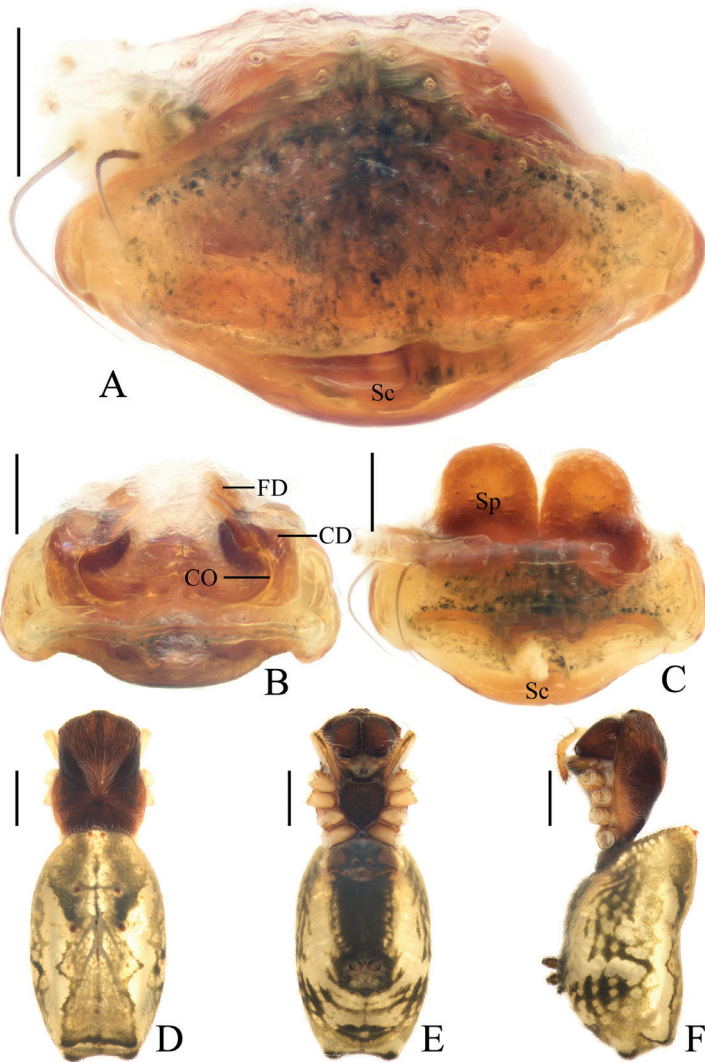


Figure 8. *Deione cheni* sp. nov., holotype **A** epigyne, ventral view **B** ibid., posterior view **C** ibid., anterior view **D** habitus, dorsal view **E** ibid., ventral view **F** ibid., lateral view. Scale bars: 0.1mm (**A–C**); 1mm (**D–F**)

leg. **Paratypes:** 1♀ (IZCAS-Ar42538), Xishuangbanna Tropical Botanical Garden, site 3 around the dump (21°54.34'N, 101°16.79'E, ca 620 m), 2.V.2019, Y. Tong leg.; 2♀ (IZCAS-Ar42539–42540), Xishuangbanna Tropical Botanical Garden, low bamboo plantation (21°53.89'N, 101°16.72'E, ca 570 m), 12.V.2019, Z. Bai leg.

Etymology. The species is named after Mr. Zhigang Chen, one of the collectors of the type specimens; noun (name) in genitive case.

Diagnosis. The new species resembles congeneric species in habitus, but it can be distinguished by the: 1) rhomboid epigyne in ventral view; 2) short, ventrally directed scape.

Description. Female (holotype, Fig. 8). Total length 6.30. Carapace 2.50 long, 1.70 wide. Abdomen 4.20 long, 2.50 wide. Clypeus 0.13 high. Eye sizes and interdistances: AME 0.15, ALE 0.10, PME 0.15, PLE 0.10, AME-AME 0.15, AME-ALE 0.53, PME-PME 0.20, PME-PLE 0.58, MOA length 0.43, anterior width 0.35, posterior width 0.45. Leg measurements: I 5.00 (1.50, 1.75, 1.15, 0.60), II 4.95 (1.50, 1.75, 1.15, 0.55), III 3.45 (1.05, 1.25, 0.65, 0.50), IV 4.90 (1.45, 1.80, 1.10, 0.55). Carapace rectangular, dark brown, with dense, pale setae. Chelicerae dark brown, 5 promarginal teeth, 3 retromarginal teeth. Endites dark brown basally, yellow distally, labium triangular, dark brown. Sternum heart-shaped, dark brown. Legs yellow with brown annulations. Abdomen oval, about 1.7 times longer than wide, with two pairs of long setae anteriorly, two pairs of vertically arranged lateral tubercles posteriorly, dorsum yellow with big grayish brown patch, patch with two pairs of constrictions laterally; venter yellow with big grayish black patch medially. Spinnerets grayish yellow, at posterior 1/3 of the abdomen.

Epigyne (Fig. 8A–C): rhomboid, about 1.8 times wider than long, with very short, ventrally directed scape; copulatory openings arcuate; copulatory ducts shorter than a spermatheca length; spermathecae elliptical, touching each other.

Variation. Total length: ♀♀ 4.90–6.30.

Distribution. China (Yunnan).

***Deione yangi* sp. nov.**

<http://zoobank.org/9FDA3B40-D368-413A-907F-2049B62DD19B>

Figs 9, 10, 20C

Type material. Holotype. ♀ (IZCAS-Ar42541), CHINA: Yunnan, Xishuangbanna, Mengla County, Menglun Town, Menglun Nature Reserve, primary tropical seasonal rainforest (21°57.67'N, 101°11.89'E, ca 790 m), 19–26.IV.2007, G. Zheng leg.

Paratypes: 1♀ (IZCAS-Ar42542), primary tropical seasonal rainforest (21°57.59'N, 101°12.21'E, ca 822 m, ca 730 m), 8.VIII.2007, G. Zheng leg.; 1♂ (IZCAS-Ar42543), Xishuangbanna Tropical Botanical Garden, Edible Botanical Garden (21°54.95'N, 101°16.18'E, ca 610 m), 28.VII.2018, X. Mi leg.

Comparative material. *Deione lingulata*, 5♂3♀, CHINA: Hainan, Wuzhishan City, Shuiman Township, Wuzhishan National Natural Reserve (18°54.17'N, 109°41.14'E, ca 870 m), 10.VIII.2020, X. Mi leg. (Figs 11, 20D)

Etymology. The species is named after Mr. Yuanfa Yang (Tongren, Guizhou), one of the collectors of the type specimens; noun (name) in genitive case.

Diagnosis. The new species resembles *D. lingulata* in habitus and copulatory organs but differs in the: 1) thin terminal apophysis, distally the width about equal to the nearest part of embolus vs. terminal apophysis thick, distally about four times wider than the nearest part of the embolus (Han et al. 2009: figs. 12, 13; Fig. 11); 2) median apophysis elliptical in prolateral view vs. triangular (Han et al. 2009: fig. 12;

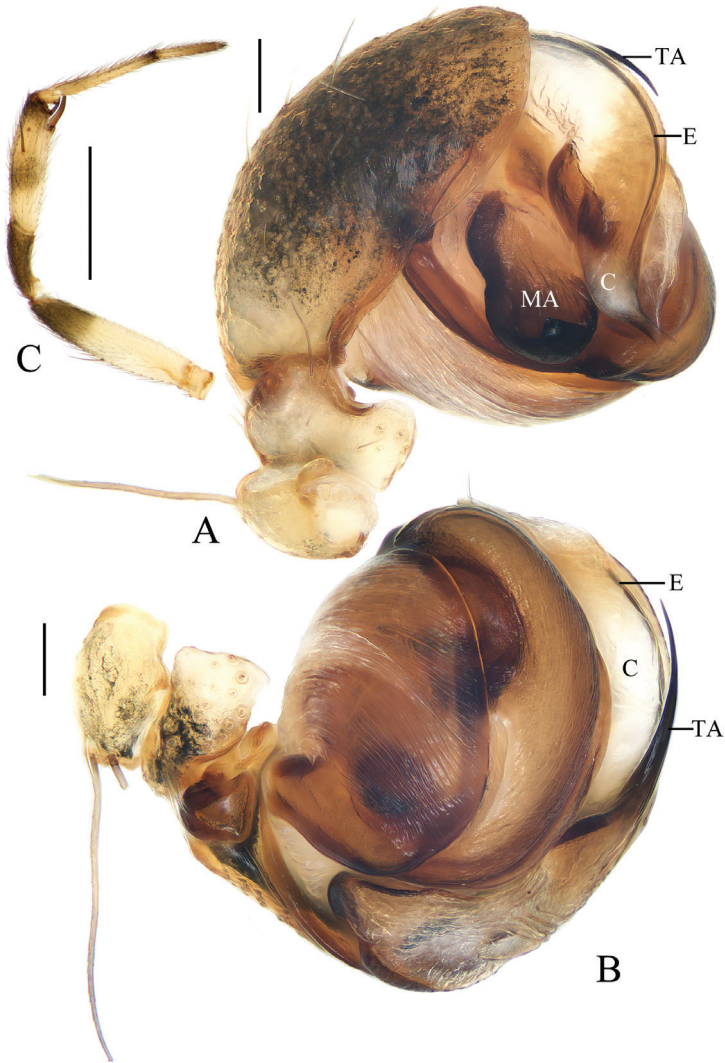


Figure 9. *Deione yangi* sp. nov., male paratype IZCAS-Ar42543, palp **A** prolateral view **B** retrolateral view **C** left leg II, prolateral view. Scale bars: 0.1mm (**A, B**); 1mm (**C**)

Fig. 11A); 3) scape triangular vs. almost rectangular (Han et al. 2009: figs. 8, 9); and 4) spermathecae touching vs. less than their diameter apart (Han et al. 2009).

Description. Female (holotype, Fig. 10A–C, F, G). Total length 6.20. Carapace 2.70 long, 2.00 wide. Abdomen 3.90 long, 2.40 wide. Clypeus 0.10 high. Eye sizes and interdistances: AME 0.18, ALE 0.13, PME 0.15, PLE 0.13, AME-AME 0.15, AME-ALE 0.50, PME-PME 0.20, PME-PLE 0.53, MOA length 0.48, anterior width 0.45, posterior width 0.45. Leg measurements: I 7.70 (2.20, 2.70, 1.90, 0.90), II 6.90 (2.00, 2.40, 1.70, 0.80), III 4.60 (1.50, 1.60, 0.90, 0.60), IV 6.50 (1.90, 2.30, 1.60, 0.70). Carapace almost rectangular, brown, with pale setae, cervical groove obvious. Chelicerae brown, five promarginal teeth, four retromarginal teeth in left chelicera, and

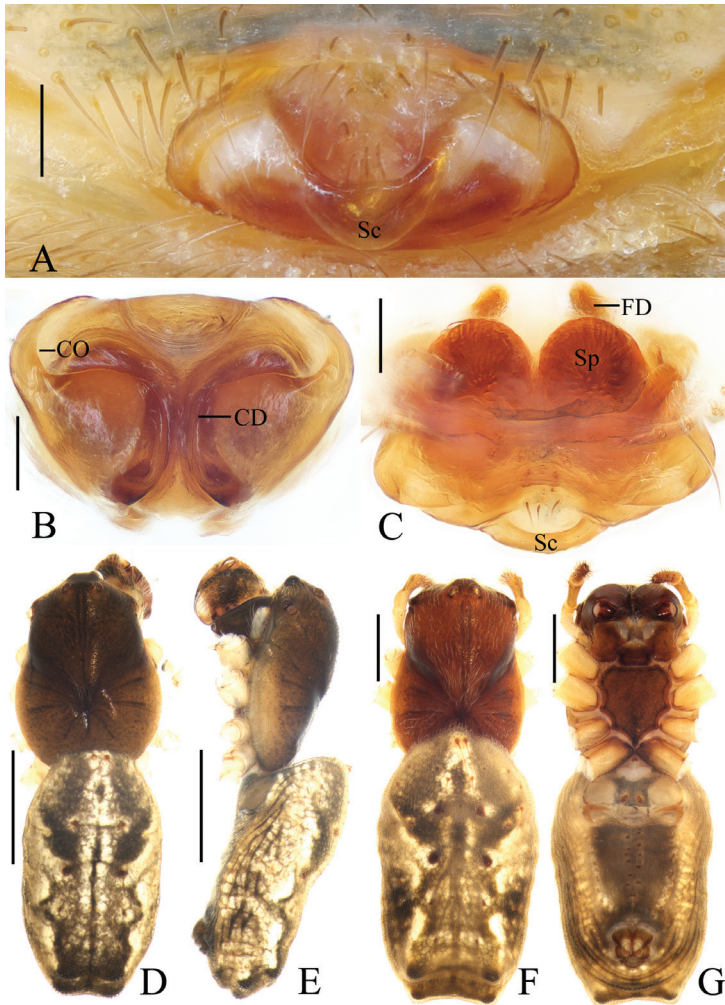


Figure 10. *Deione yangi* sp. nov. **A–C, F, G** holotype **D, E** male paratype IZCAS-Ar42543 **A** epigyne, ventral view **B** *ibid.*, posterior view **C** vulva, anterior view **D** habitus, dorsal view **E** *ibid.*, lateral view **F** *ibid.*, dorsal view **G** *ibid.*, ventral view. Scale bars: 0.1mm (**A–C**); 1mm (**D–G**)

five in right. Endites almost rectangular, brown, paler distally, labium triangular, dark brown, paler distally. Sternum heart-shaped, brown. Legs yellow with brown annulations. Abdomen oval, about 1.6 times longer than wide, with two pairs of long setae anteriorly, two pairs of vertically arranged lateral tubercles posteriorly, dorsum grayish brown with yellow patches anteriorly and laterally; venter yellow, big gray patch medially. Spinnerets grayish yellow, at posterior 1/4 of the abdomen.

Epigyne (Fig. 10A–C): about 1.8 times wider than long; scape triangular; copulatory openings arcuate, situated laterally in posterior view; copulatory ducts longer than spermatheca, arcuate in posterior view; spermathecae globular, touching each other.

Male (paratype IZCAS-Ar42543, Figs 9, 10D, E, 20C). Total length 3.75. Carapace 1.70 long, 1.35 wide. Abdomen 2.15 long, 1.30 wide. Clypeus 0.10 high. Eye

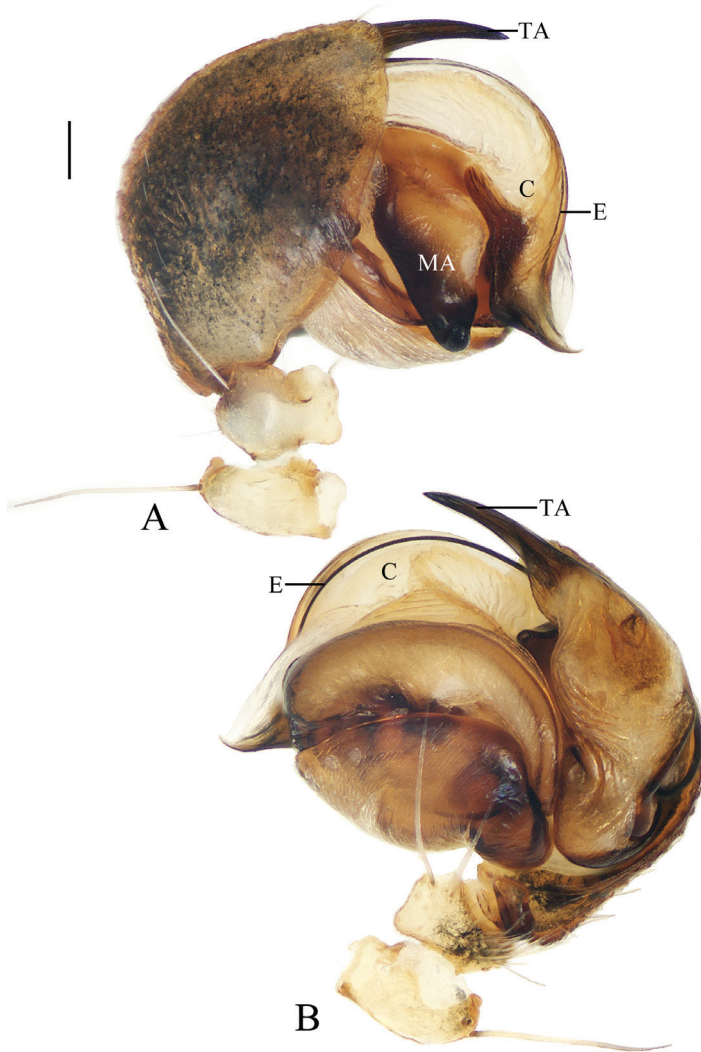


Figure 11. *Deione lingulata*, male palp **A** prolateral view **B** retrolateral view. Scale bars: 0.1mm

sizes and interdistances: AME 0.15, ALE 0.10, PME 0.13, PLE 0.10, AME-AME 0.10, AME-ALE 0.23, PME-PME 0.15, PME-PLE 0.28, MOA length 0.38, anterior width 0.35, posterior width 0.38. Leg measurements: I 4.25 (1.25, 1.60, 0.95, 0.45), II 4.35 (1.45, 1.50, 0.95, 0.45), III 2.75 (0.90, 0.95, 0.55, 0.35), IV 3.85 (1.15, 1.45, 0.85, 0.40). Habitus similar to that of female, but tibia II expanded, with 3 macrosetae and chelicerae with 3 retromarginal teeth.

Palp (Figs 9A, B, 20C): median apophysis elliptical in prolateral view, pointed distally; embolus slender, longer than bulb diameter; conductor as wide as bulb, membranous; terminal apophysis spinose, slightly curved.

Variation. Total length: ♀♀ 6.20–6.50.

Distribution. China (Yunnan).

Genus *Hyposinga* Ausserer, 1871

Hyposinga Ausserer, 1871: 823; Yin et al. 1997: 306; Yin et al. 2012: 689.

Type species. *Singa sanguinea* C.L. Koch, 1844 from Germany

***Hyposinga pulla* sp. nov.**

<http://zoobank.org/6155FE2D-7491-4983-8BFA-A763F57926F4>

Figs 12, 13, 21A

Type material. *Holotype* ♂ (IZCAS-Ar42544), CHINA: Yunnan, Xishuangbanna, Mengla County, Menglun Town, Menglun Nature Reserve, G213 roadside, Mannanxing (21°53.49'N, 101°17.11'E, ca 560 m), 9.VIII.2018, C. Wang leg. *Paratypes*: 1♀ (IZCAS-Ar42545), same data as holotype; 2♂ (IZCAS-Ar42546–42547), along G213 roadside (21°53.55'N, 101°16.39'E, ca 540 m), 3.VIII.2018, C. Wang leg.

Etymology. The specific name comes from the Latin word “pulla”, meaning “dark, blackish”, referring to the dark markings at the eye region; adjective.

Diagnosis. The new species resembles *H. pygmaea* (Sundevall, 1831) in habitus but can be distinguished by the: 1) enlarged copulatory ducts vs. not enlarged (Yin et al. 1997: fig. 215d); 2) spermathecae touching vs. separated from each other (Yin et al. 1997: fig. 215d); 3) embolus length less than half a bulb diameter vs. longer than a bulb diameter (Yin et al. 1997: fig. 215e).

Description. **Male** (holotype, Figs 12, 13C, D, 21A). Total length 2.40. Carapace 1.10 long, 0.95 wide. Abdomen 1.45 long, 0.90 wide. Clypeus 0.18 high. Eye sizes and interdistances: AME 0.06, ALE 0.04, PME 0.05, PLE 0.04, AME-AME 0.05, AME-ALE 0.03, PME-PME 0.05, PME-PLE 0.05, MOA length 0.15, anterior width 0.15, posterior width 0.15. Leg measurements: I 4.00 (1.30, 1.35, 0.90, 0.45), II 3.60 (1.15, 1.20, 0.85, 0.40), III 2.45 (0.80, 0.75, 0.55, 0.35), IV 3.75 (1.25, 1.20, 0.90, 0.40). Carapace pear shaped, yellow with black patch in eye region, cervical groove inconspicuous, fovea transverse. Chelicerae yellow, three promarginal teeth, two retro-marginal teeth. Endites yellow, labium triangular, yellow. Sternum yellow, with sparse, dark setae. Legs grayish brown, without annulations. Abdomen elliptical, about 1.6 times longer than wide, covered with pale setae, dorsum black-brown; venter grayish brown with big black patch medially. Spinnerets brownish black.

Palp (Figs 12, 21A): with two patellar bristles; median apophysis hooked; embolus shorter than half bulb diameter, covered by terminal and subterminal apophyses in prolateral view; conductor thick; terminal apophysis membranous, bifurcated distally; subterminal apophysis membranous, width almost same as width of terminal apophysis; tegulum extended near conductor.

Female (paratype IZCAS-Ar42545, Fig. 13A, B, E, F). Total length 2.75. Carapace 1.00 long, 0.90 wide. Abdomen 2.00 long, 1.45 wide. Clypeus 0.13 high. Eye sizes and interdistances: AME 0.06, ALE 0.04, PME 0.05, PLE 0.04, AME-AME 0.05, AME-ALE 0.05, PME-PME 0.05, PME-PLE 0.05, MOA length 0.15, anterior

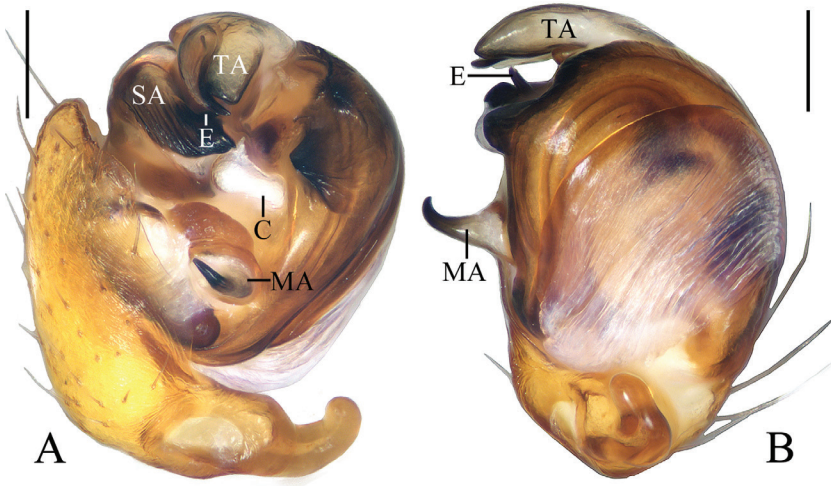


Figure 12. *Hyposinga pulla* sp. nov., holotype, male palp **A** prolateral view **B** ventral view. Scale bars: 0.1mm

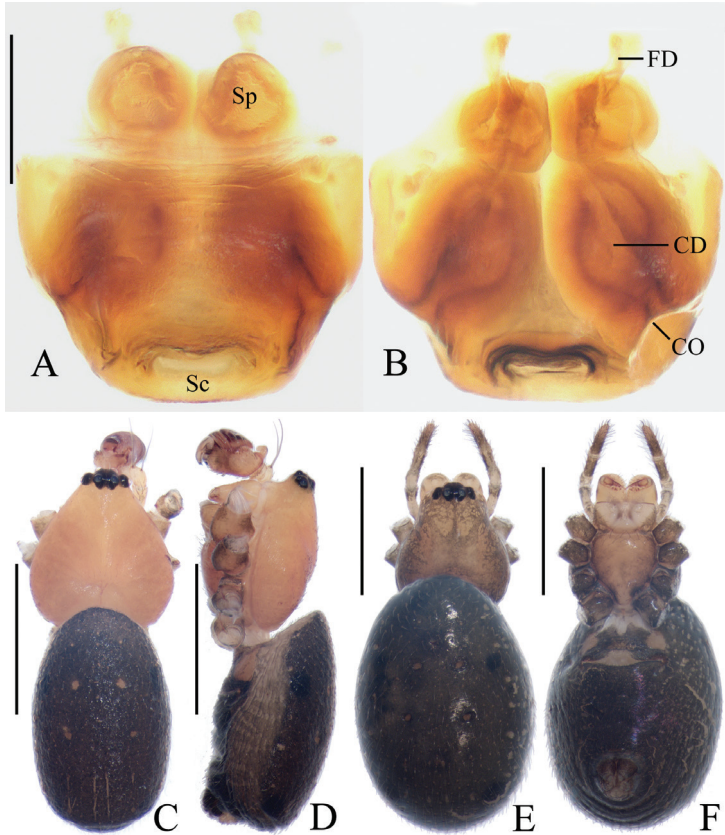


Figure 13. *Hyposinga pulla* sp. nov. **A, B, E, F** female paratype IZCAS-Ar42545 **C, D** holotype **A** epigyne, anterior view **B** ibid., posterior view **C** habitus, dorsal view **D** ibid., lateral view **E** ibid., dorsal view **F** ibid., ventral view. Scale bars: 0.1mm (A, B); 1mm (C–F)

width 0.15, posterior width 0.18. Leg measurements: I 3.10 (0.95, 1.05, 0.70, 0.40), II 2.85 (0.90, 0.95, 0.65, 0.35), III 2.00 (0.65, 0.60, 0.45, 0.30), IV 3.00 (1.00, 0.95, 0.70, 0.35). Habitus similar to that of male; carapace a little darker.

Epigyne (Fig. 13A, B): pentagonal in anterior view, about 1.4 times wider than long; copulatory openings laterally situated; copulatory ducts large, wider than spermatheca diameter at its widest part; spermathecae globular, touching each other.

Variation. Total length: ♂♂ 2.40–2.55.

Distribution. China (Yunnan).

Genus *Mangora* O. Pickard-Cambridge, 1889

Mangora O. Pickard-Cambridge, 1889: 14; Yin et al. 1997: 329; Yin et al. 2012: 711.

Type species *Mangora picta* O. Pickard-Cambridge, 1889 from Guatemala

Comments. Unlike the typical *Mangora* species, the two new species in this region both lack trichobothria on the tibia of leg III, but they have some common characters with *Mangora*, such as the cephalic region of the carapace is about half the maximum width of the thoracic region, the palp with one patellar bristle, and the abdomen oval; thus, we place the two species in *Mangora*, and phylogenetic analysis will focus on the placement of the two new species.

Mangora bairi sp. nov.

<http://zoobank.org/9A48184E-E930-4177-B798-24A4B8A7C89D>

Figs 14, 15, 21B

Type material. Holotype. ♂ (IZCAS-Ar42548) CHINA: Yunnan, Xishuangbanna, Mengla County, Menglun Town, Menglun Nature Reserve, secondary forest near mountain top (21°57.92'N, 101°12.05'E, ca 820 m), 2.VI.2013, Z. Zhao & Z. Chen leg.

Paratypes: 1♀ (IZCAS-Ar42549), secondary tropical seasonal rainforest (21°55.43'N, 101°16.44'E, ca 600 m), 19–25.XI.2006, G. Zheng leg.; 1♀ (IZCAS-Ar42550), secondary tropical seasonal moist forest (21°54.72'N, 101°16.94'E, ca 650 m), 19–25.XI.2006, G. Zheng leg.; 1♀ (IZCAS-Ar42551), secondary tropical seasonal rainforest (21°55.43'N, 101°16.44'E, ca 600 m), 5–12.XII.2006, G. Zheng leg.; 1♀ (IZCAS-Ar42552), secondary tropical seasonal rainforest (21°55.43'N, 101°16.44'E, ca 600 m), 19–26.V.2007, G. Zheng leg.; 1♂ (IZCAS-Ar42638), G213 roadside, secondary forest (21°54.46'N, 101°16.76'E, ca 640 m), 20.XI.2009, G. Tang leg.; 1♂ (IZCAS-Ar42562), secondary forest near mountain top (21°57.96'N, 101°12.19'E, ca 787 m), 31.V.2013, Z. Zhao & Z. Chen leg.; 1♂ (IZCAS-Ar42639), secondary tropical forest, around garbage dump (21°54.17'N, 101°16.87'E, ca 609 m), 31.VII.2018, Z. Bai leg.

Etymology. The species is named after Mr. Zilong Bai, one of the collectors of the type specimens; noun (name) in genitive case.

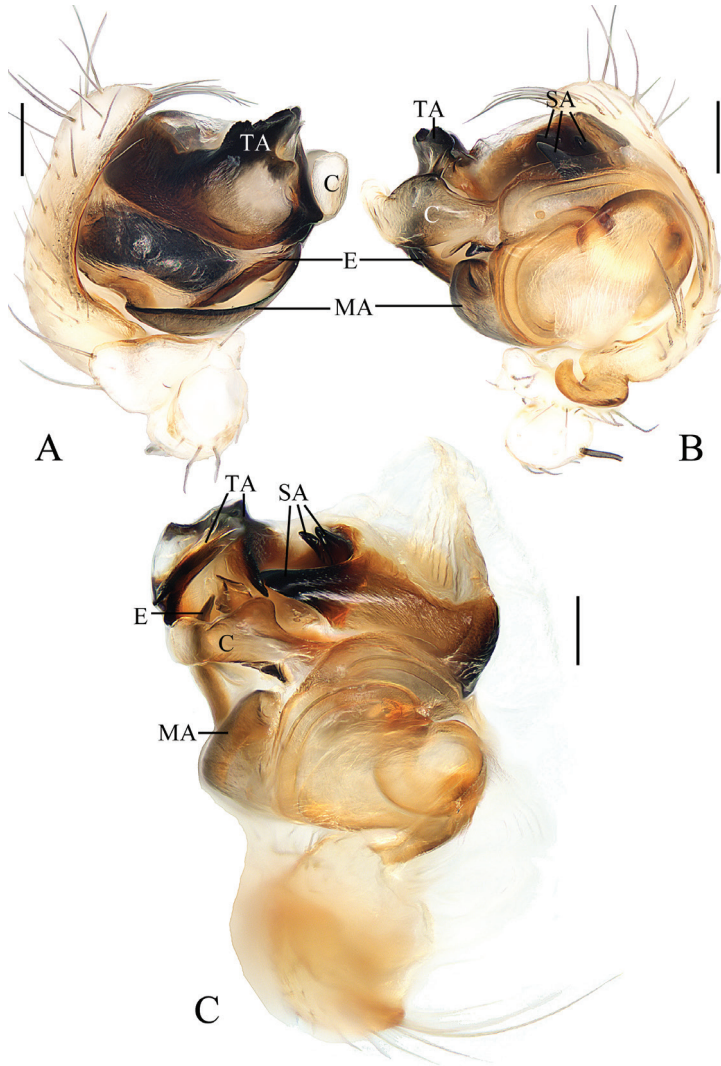


Figure 14. *Mangora baii* sp. nov., male palp **A, B** holotype **C** male paratype IZCAS-Ar42638 **A** prolateral view **B** ventral view **C** expanded in lactic acid. Scale bars: 0.1mm

Diagnosis. The new species differs from congeners by the following combination of characters: 1) the abdomen has two transverse patches and one longitudinal patch; 2) the scape is distally widened; 3) the conductor is long, membranous, and basally trifurcated.

Description. Male (holotype, Figs 14A, B, 15C, D, 21B). Total length 2.60. Carapace 1.40 long, 1.10 wide. Abdomen 1.55 long, 1.00 wide. Clypeus 0.08 high. Eye sizes and interdistances: AME 0.10, ALE 0.05, PME 0.08, PLE 0.05, AME-AME 0.08, AME-ALE 0.03, PME-PME 0.03, PME-PL 0.10, MOA length 0.30, anterior width 0.30, posterior width 0.20. Leg measurements: I 5.00 (1.35, 1.75, 1.30, 0.60), II 4.40 (1.30, 1.40, 1.15, 0.55), III 2.95 (0.90, 0.95, 0.70, 0.40), IV 4.20 (1.30, 1.35,



Figure 15. *Mangora baii* sp. nov. **A, B, E, F** female paratype IZCAS-Ar42551 **C, D** holotype **A** epigyne, ventral view **B** ibid., posterior view **C** habitus, dorsal view **D** ibid., lateral view **E** ibid., dorsal view **F** ibid., ventral view. Scale bars: 0.1mm (**A, B**); 1mm (**C-F**)

1.05, 0.50). Carapace pear shaped, grayish yellow with black eye region, cervical groove slightly obvious, fovea longitudinal. Chelicerae yellow, four promarginal and three retromarginal teeth. Endites grayish yellow, with a protuberance on anterior lateral margin, labium grayish brown, paler distally. Sternum heart-shaped, grayish yellow. Legs yellow without annulations, femur II with furrow basally, tibia II with 13 macrosetae. Abdomen oval, about 1.55 times longer than wide, with long, grayish brown setae, dorsum grayish yellow with two transverse and one longitudinal grayish brown patch; venter grayish yellow, big grayish brown patch medially. Spinnerets grayish yellow.

Palp (Figs 14, 21B): with one patellar bristle; cymbium tip with cluster of long macrosetae, median apophysis about a bulb diameter width, lamellar; embolus tapered and slightly curved; conductor length about equal to bulb diameter, membranous, basally trifurcated; terminal apophysis extremely large, almost triangular in apical view; subterminal apophysis with 3 protuberances.

Female (paratype IZCAS-Ar42551, Fig. 15A, B, E, F). Total length 3.85. Carapace 1.75 long, 1.20 wide. Abdomen 2.65 long, 2.30 wide. Clypeus 0.05 high. Eye sizes and interdistances: AME 0.13, ALE 0.10, PME 0.13, PLE 0.10, AME-AME 0.08, AME-ALE 0.05, PME-PME 0.03, PME-PLE 0.10, MOA length 0.35, anterior width 0.30, posterior width 0.25. Leg measurements: I 6.10 (1.75, 2.10, 1.55, 0.70), II 5.15 (1.50, 1.75, 1.25, 0.65), III 3.50 (1.10, 1.15, 0.75, 0.50), IV 5.15 (1.55, 1.75, 1.25, 0.60). Habitus similar to that of male but endites without protuberances.

Epigyne (Fig. 15A, B): wider than long, with distally widened scape; copulatory openings narrow, situated at anterior base of lateral lobes; copulatory ducts slightly curved; spermathecae globular, touching each other.

Variation. Total length: ♂♂ 2.45–2.60; ♀♀ 3.10–3.85.

Distribution. China (Yunnan).

***Mangora cephal* sp. nov.**

<http://zoobank.org/580FDD3B-F09F-48B5-BB94-A59A9A8B6483>

Figs 16, 17, 21C

Type material. Holotype. ♂ (IZCAS-Ar42553), CHINA: Yunnan, Xishuangbanna, Mengla County, Menglun Town, Menglun Nature Reserve, secondary tropical montane evergreen broad-leaf forest (21°57.53'N, 101°12.30'E, ca 860 m), 19–25.XI.2006, G. Zheng leg. **Paratypes:** 1♀ (IZCAS-Ar42554), rubber plantation (approx. 20 years old) (21°54.65'N, 101°16.26'E, ca 570 m), 16–24.IX.2006, G. Zheng leg.; 1♂ (IZCAS-Ar42555), rubber plantation (approx. 20 years old) (21°54.67'N, 101°16.26'E, ca 570 m), 5–12.X.2006, G. Zheng leg.; 1♀ (IZCAS-Ar42556), rubber plantation (approx. 20 years old) (21°54.46'N, 101°15.98'E, ca 570 m), 5–12.X.2006, G. Zheng leg.; 1♀ (IZCAS-Ar42557), rubber plantation (approx. 20 years old) (21°54.68'N, 101°16.32'E, ca 590 m), 5–12.X.2006, G. Zheng leg.; 1♀ (IZCAS-Ar42558), rubber plantation (approx. 20 years old) (21°54.46'N, 101°15.98'E, ca 570 m), 19–25.X.2006, G. Zheng leg.; 1♀ (IZCAS-Ar42559), rubber plantation (approx. 20 years old) (21°54.67'N, 101°16.26'E, ca 570 m), 19–26.V.2007, G. Zheng leg.; 1♂ (IZCAS-Ar42560), rubber plantation (approx. 20 years old) (21°54.463'N, 101°15.978'E, 569 m), 5–12.XII.2006, G. Zheng leg.; 1♂ (IZCAS-Ar42561), *Paramichelia baillonii* plantation (approx. 20 years old) (21°54.77'N, 101°16.04'E, ca 560 m), 19–25.XII.2006, G. Zheng leg.

Etymology. The specific name is derived from the Greek word “cephalos”, meaning “head”, referring to the brown cephalic region of the females; noun in apposition.

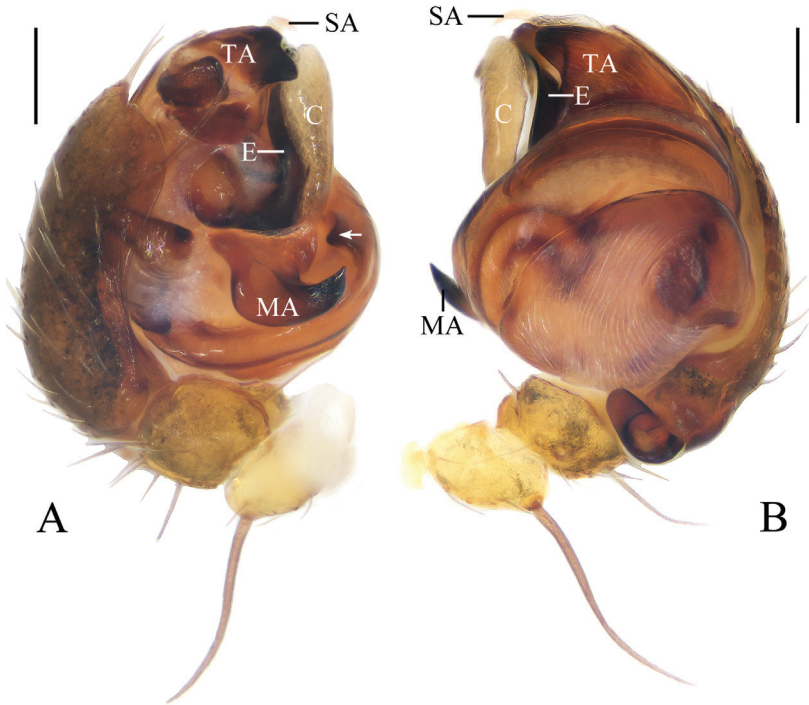


Figure 16. *Mangora cephalo* sp. nov., holotype, male palp **A** prolateral view **B** retrolateral view. Scale bars: 0.1mm

Diagnosis. The new species differs from congeneric species by the following combination of characters: 1) a somewhat rectangular scape; 2) a slender, translucent subterminal apophysis; 3) a tegular protuberance near the base of the median apophysis; and 4) an abdomen with an arcuate brown patch anteriorly and four transverse brown patches medially and posteriorly.

Description. Male (holotype, Figs 16, 17D, E, 21C). Total length 2.40. Carapace 1.20 long, 0.90 wide. Abdomen 1.20 long, 1.00 wide. Clypeus 0.10 high. Eye sizes and interdistances: AME 0.10, ALE 0.05, PME 0.08, PLE 0.05, AME-AME 0.08, AME-ALE 0.05, PME-PME 0.03, PME-PLE 0.08, MOA length 0.23, anterior width 0.25, posterior width 0.20. Leg measurements: I 3.90 (1.20, 1.25, 1.00, 0.45), II 3.30 (1.00, 1.00, 0.90, 0.40), III 2.20 (0.70, 0.70, 0.50, 0.30), IV 3.40 (1.05, 1.05, 0.90, 0.40). Carapace pear shaped, dark brown, cervical groove inconspicuous, fovea longitudinal. Chelicerae dark brown, four promarginal teeth, two retromarginal teeth. Endites and labium dark brown, paler distally. Sternum dark brown with indistinct, darker radial patches. Legs yellow without annulations, femur II with a furrow basally, tibia II with seven macrosetae. Abdomen elliptical, about 1.2 times longer than wide, dorsum yellow with arcuate brown patch anteriorly, four transverse brown patches medially and posteriorly; venter grayish yellow laterally, brown medially. Spinnerets grayish yellow.

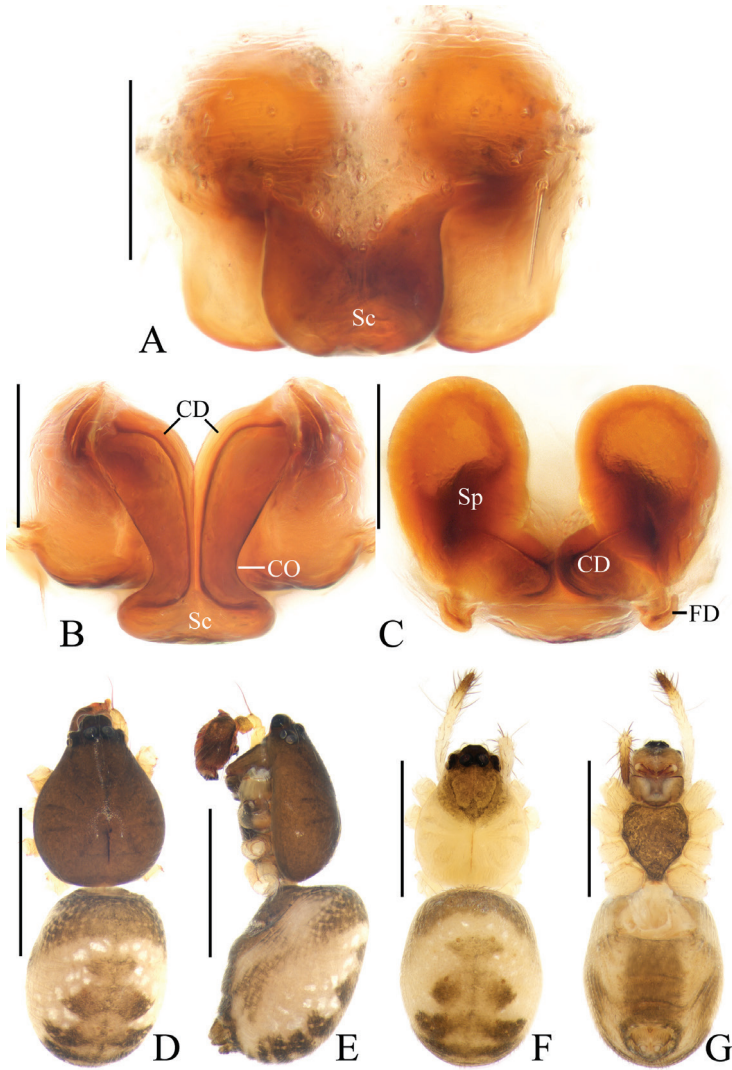


Figure 17. *Mangora cephalo* sp. nov. **A–C, F, G** female paratype IZCAS-Ar42559, **D, E** holotype **A** epigyne, ventral view **B** ibid., posterior view **C** vulva, dorsal view **D** habitus, dorsal view **E** ibid., lateral view **F** ibid., dorsal view **G** ibid., ventral view. Scale bars: 0.1mm (**A–C**); 1mm (**D–G**)

Palp (Figs 16, 21C): with one patellar bristle; tegulum with a protuberance near base of median apophysis (see arrow in Fig. 16A); median apophysis hooked; embolus thick, slightly curved; conductor membranous, as long as embolus in prolateral view; terminal apophysis prominent, pointed distally; subterminal apophysis slender, translucent.

Female (paratype IZCAS-Ar42559, Figs 17A–C, F, G). Total length 2.45. Carapace 1.10 long, 0.85 wide. Abdomen 1.60 long, 1.10 wide. Clypeus 0.03 high. Eye sizes and interdistances: AME 0.10, ALE 0.05, PME 0.08, PLE 0.05, AME-AME 0.08, AME-ALE 0.05, PME-PME 0.05, PME-PLE 0.08, MOA length 0.23, anterior

width 0.23, posterior width 0.20. Leg measurements: I 4.10 (1.25, 1.30, 1.05, 0.50), II 3.65 (1.15, 1.20, 0.90, 0.40), III 2.30 (0.75, 0.70, 0.50, 0.35), IV 3.50 (1.05, 1.10, 0.90, 0.45). Habitus similar to that of male but thoracic region yellow.

Epigyne (Fig. 17A–C) about 1.1 times wider than long; with rectangular scape; copulatory openings wide, covered by lateral part of scape in ventral view; copulatory ducts long, slightly curved, covered by posterior plate in posterior view; spermathecae ovoid, separated from each other.

Variation. Total length: ♂♂ 2.10–2.40; ♀♀ 2.10–2.60.

Distribution. China (Yunnan).

Genus *Milonia* Thorell, 1890

Milonia Thorell, 1890: 180.

Type species *Milonia brevipes* Thorell, 1890 from Sumatra

Comments. This is a poorly understood genus; all seven species were described more than 100 years ago. Among them, two are known from juveniles, five are known from a single-sex, and no high-quality illustrations of the genitalia were provided in the published literature. We place the new species in this genus based on the following characters: large chelicerae, cylindrical abdomen in female, relatively stout legs, spinnerets of the female situated at the middle part of the ventral abdomen.

Milonia gemella sp. nov.

<http://zoobank.org/E7B60026-AE2F-4931-9A75-F1FA4E6E23EA>

Figs 18, 19, 21D

Type material. *Holotype.* ♂ (IZCAS-Ar42562), CHINA: Yunnan, Xishuangbanna, Mengla County, Menglun Town, Menglun Nature Reserve, G213 roadside, secondary forest (21°54.46'N, 101°16.76'E, ca 640 m), 20.XI.2009, G. Tang leg. *Paratypes:* 1 ♀ (IZCAS-Ar42563), primary tropical seasonal rainforest (21°57.53'N, 101°12.38'E, ca 899 m), 4–11.V.2007, G. Zheng leg.; 1 ♀ (IZCAS-Ar42564), secondary tropical forest, around garbage dump (21°54.17'N, 101°16.87'E, ca 609 m), 31.VII.2018, Z. Bai leg.; 1 ♀ (IZCAS-Ar42565), Xishuangbanna Tropical Botanical Garden, site 1 around the dump (21°54.28'N, 101°16.75'E, ca 630 m), 25.IV.2019, Z. Bai leg.

Etymology. The specific name is from the Latin word “gemella”, meaning “twin born”, referring to the two white spots on the abdomen ventrally; adjective.

Diagnosis. The new species can be distinguished from congeneric species by the following combination of characters: 1) dorsal abdomen with two pairs of small grayish brown spots medially and a large dark brown spot posteriorly; 2) triangular scape; and 3) prominent and bifurcated terminal apophysis.

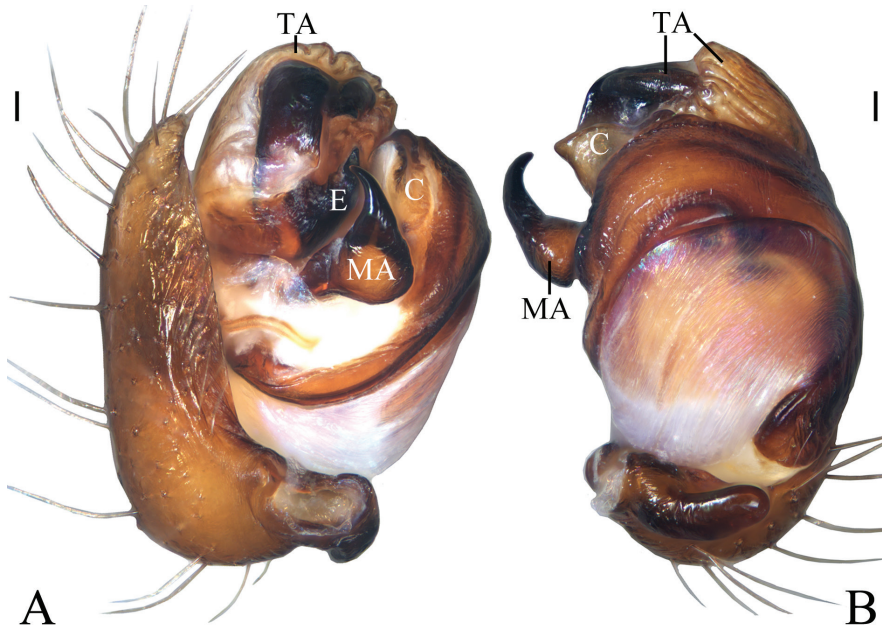


Figure 18. *Milonia gemella* sp. nov., holotype, male palp **A** prolateral view **B** ventral view. Scale bars: 0.1mm

Description. Male (holotype, Figs 18, 19D, E, 21D). Total length 6.30. Carapace 2.90 long, 1.80 wide. Abdomen 3.40 long, 2.10 wide. Clypeus 0.13 high. Eye sizes and interdistances: AME 0.15, ALE 0.10, PME 0.13, PLE 0.10, AME-AME 0.23, AME-ALE 0.28, PME-PME 0.05, PME-PLE 0.38, MOA length 0.38, anterior width 0.40, posterior width 0.28. Leg measurements: I 7.30 (2.10, 2.75, 1.55, 0.90), II 6.75 (1.90, 2.40, 1.60, 0.85), III 4.00 (1.25, 1.40, 0.75, 0.60), IV 5.30 (1.65, 2.00, 1.05, 0.60). Carapace elliptical, brown, with pale setae, cervical groove obvious. Chelicerae brown, four promarginal teeth, three retromarginal teeth. Endites brown, paler distally, labium triangular, brown, paler distally. Sternum pentagonal, dark brown with pale setae. Legs brown, without annulations. Abdomen elliptical, about 1.6 times longer than wide, covered with dark setae, dorsum yellow with two pairs of grayish brown spots medially, big black spot posteriorly; venter yellowish brown with pair of white spots. Spinnerets yellowish brown, at posterior 1/3 of the abdomen.

Palp (Figs 18, 21D): with two patellar bristles; median apophysis stout at base, with a slender, curved spur; embolus broad at base, abruptly tapered to a fine tip; conductor broad at base, tapering to a narrow tip; terminal apophysis extremely large, strongly sclerotized, bifurcated distally, one long, narrow branch, one shorter, wider branch (see arrows in Fig. 21D).

Female (paratype IZCAS-Ar42564, Fig. 19A–C, F, G). Total length 9.40. Carapace 3.60 long, 2.40 wide. Abdomen 6.10 long, 3.10 wide. Clypeus 0.23 high. Eye siz-

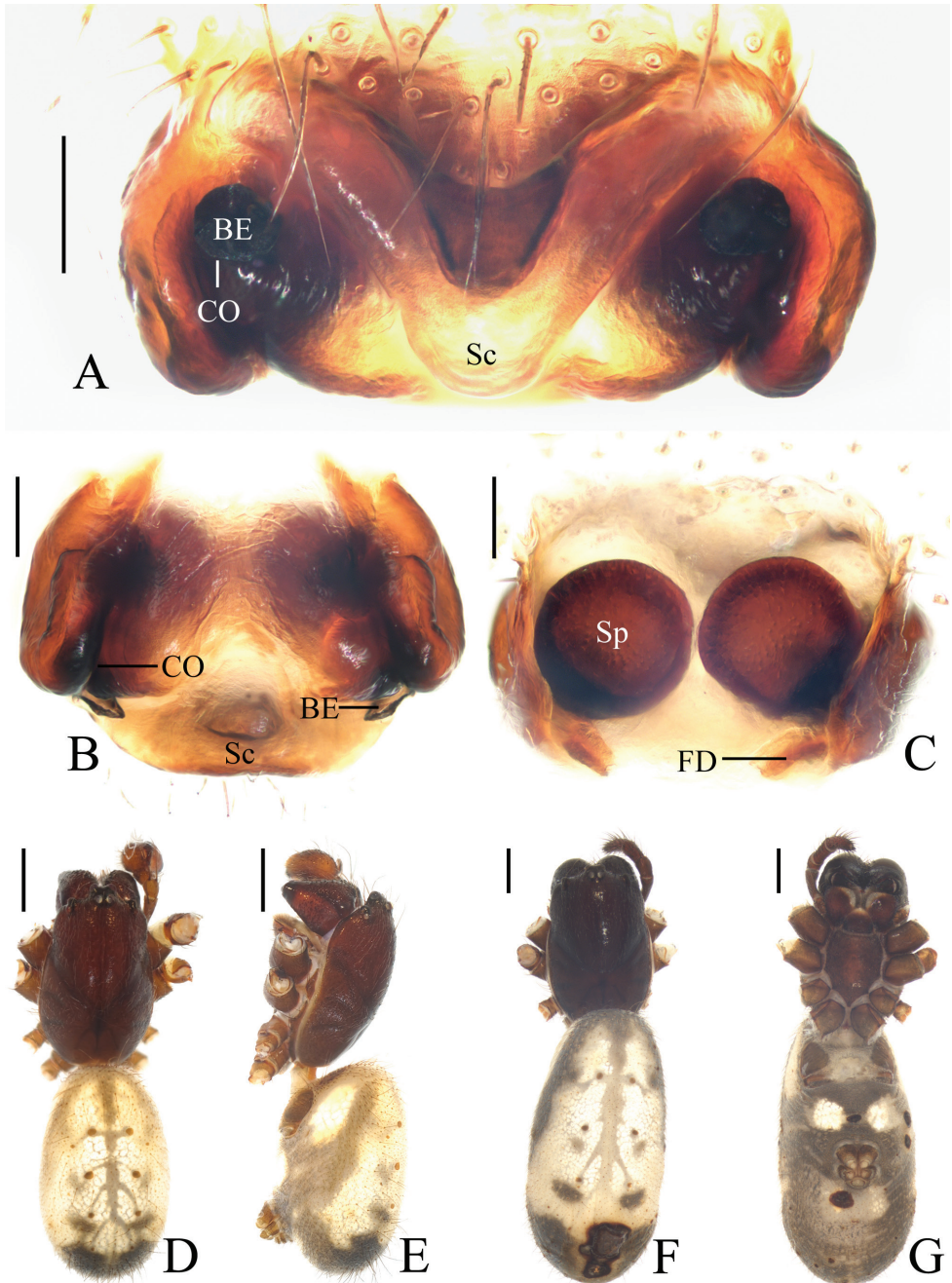


Figure 19. *Milonia gemella* sp. nov. **A–C, F, G** female paratype IZCAS-Ar42564 **D, E** holotype **A** epigyne, ventral view **B** ibid., posterior view **C** vulva, dorsal view **D** habitus, dorsal view **E** ibid., lateral view **F** ibid., dorsal view **G** ibid., ventral view. Scale bars: 0.1 mm (**A–C**); 1mm (**D–G**)

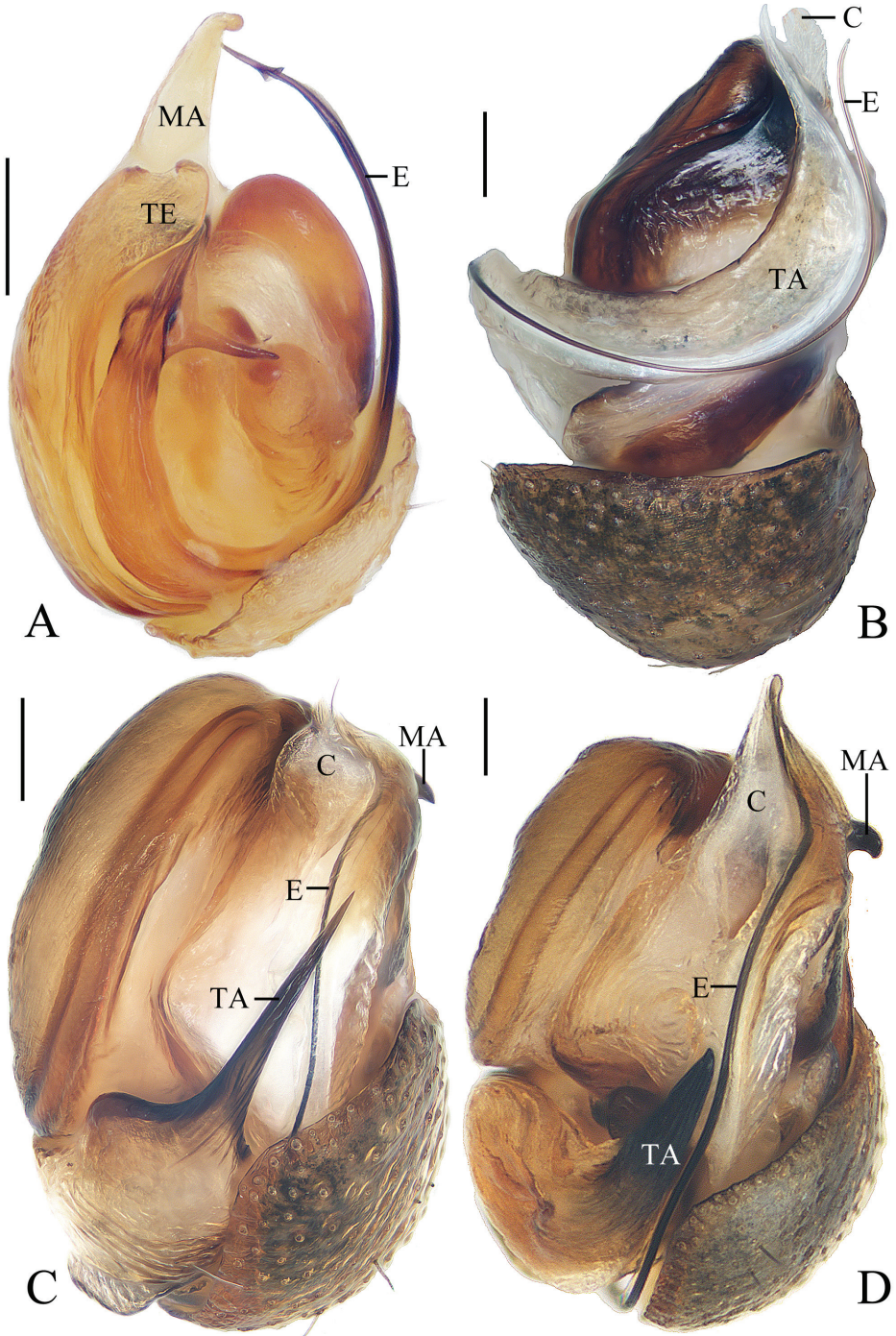


Figure 20. Male palps, apical view **A** *Acusilas tongi* sp. nov. **B** *Chorizopesoides guoi* sp. nov. **C** *Deione yangi* sp. nov. **D** *Deione lingulata*. Scale bars: 0.1

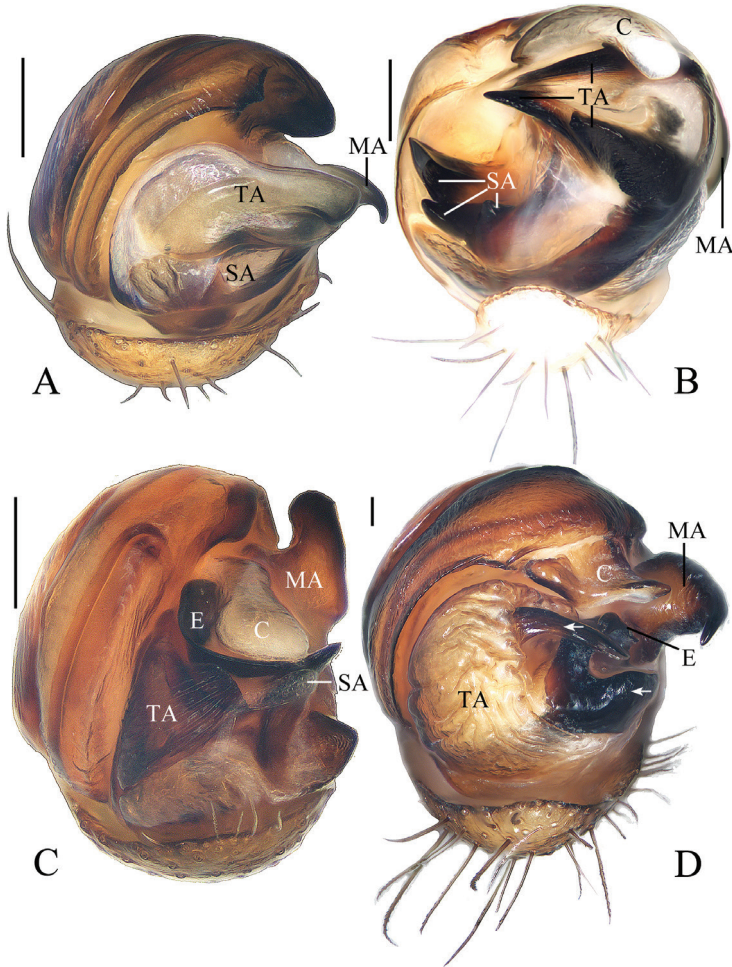


Figure 21. Male palps, apical view **A** *Hyposinga pulla* sp. nov. **B** *Mangora baii* sp. nov. **C** *Mangora cephalata* sp. nov. **D** *Milonia gemella* sp. nov. Scale bars: 0.1mm

es and interdistances: AME 0.18, ALE 0.10, PME 0.13, PLE 0.10, AME-AME 0.15, AME-ALE 0.45, PME-PME 0.05, PME-PLE 0.63, MOA length 0.45, anterior width 0.45, posterior width 0.28. Leg measurements: I 8.45 (2.40, 3.05, 2.05, 0.95), II 7.55 (2.10, 2.85, 1.75, 0.85), III 4.20 (1.00, 1.75, 0.85, 0.60), IV 6.40 (1.95, 2.50, 1.25, 0.70). Habitus similar to that of male but abdomen about two times longer than wide.

Epigyne (Fig. 19A–C) about two times wider than long; short, triangular scape, flanked by round copulatory openings; copulatory ducts shorter than a spermatheca diameter; spermathecae globular, touching each other.

Variation. Total length: ♀♀ 9.20–9.40.

Distribution. China (Yunnan).

Acknowledgments

The manuscript benefited greatly from comments by Zhiyuan Yao, Akio Tanikawa, Yuri Marusik, Anna Šestáková. Sarah Crews checked the English. Theo Blick checked etymologies of the new taxa. Guo Tang, Guo Zheng, Yanfeng Tong, Hao Yu, Cheng Wang, Jiahui Gan, Zhigang Chen, Zilong Bai, Yuanfa Yang, and Hong Liu helped with fieldwork. This research was supported by the National Natural Science Foundation of China (NSFC-31660609), the Science and Technology Project Foundation of Guizhou Province ([2020]1Z014), and the Key Laboratory Project of Guizhou Province ([2020]2003).

References

- Ausserer A (1871) Neue Radspinnen. Verhandlungen der Kaiserlich-Königlichen Zoologisch-Botanischen Gesellschaft in Wien 21: 815–832.
- Han GX, Zhu MS, Levi HW (2009) On two rare south-east Asian araneid genera: *Deione* and *Talhythbia* (Araneae: Araneidae). Zootaxa 2297: 55–63. <https://doi.org/10.11646/zootaxa.2297.1.5>
- Kallal RJ & Hormiga G (2019) Evolution of the male palp morphology of the orb-weaver hunting spider *Chorizopes* (Araneae: Araneidae) revisited on a new phylogeny of Araneidae, and description of a third species from Madagascar. Invertebrate Systematics 33(3): 473–487. <https://doi.org/10.1071/IS18061>
- Li S (2020) Spider taxonomy for an advanced China. Zoological Systematics 45(2): 73–77. <https://doi.org/10.11865/zs.202011>
- Li J, Yan X, Lin Y, Li S, Chen H (2021) Challenging Wallacean and Linnean shortfalls: *Ectosticta* spiders (Araneae, Hypochilidae) from China. Zoological Research 42(6): 791–794. <https://doi.org/10.24272/j.issn.2095-8137.2021.212>
- Mi X, Li S (2021) On nine species of the spider genus *Eriovixia* (Araneae, Araneidae) from Xishuangbanna, China. ZooKeys 1034: 199–236. <https://doi.org/10.3897/zookeys.1034.60411>
- Mi X, Peng X & Yin C (2010) Two new species of the rare orbweaving spider genus *Deione* (Araneae: Araneidae) from China. Zootaxa 2491: 34–40. <https://doi.org/10.11646/zootaxa.2491.1.2>
- Mi X, Wang C (2018) *Chorizopesoides*, a new genus of orb-weaver spider from China (Araneae: Araneidae). Oriental Insects 52(1): 79–87. <https://doi.org/10.1080/00305316.2017.1347843>
- Murphy J, Murphy F (1983) The orb weaver genus *Acusilas* (Araneae, Araneidae). Bulletin of the British Arachnological Society 6: 115–123.
- Pickard-Cambridge O (1871) On some new genera and species of Araneida. Proceedings of the Zoological Society of London 38(3, 1870): 728–747. [pl. 44]
- Pickard-Cambridge O (1889) Arachnida. Araneida. In: Biologia Centrali-Americana, Zoology. London 1, 1–56.

- Schmidt JB, Scharff N (2008) A taxonomic revision of the orb-weaving spider genus *Acusilas* Simon, 1895 (Araneae, Araneidae). *Insect Systematics & Evolution* 39(1): 1–38. <https://doi.org/10.1163/187631208788784147>
- Simon E (1895) *Histoire naturelle des araignées*. Deuxième édition, tome premier. Roret, Paris, 761–1084.
- Thorell T (1873) Remarks on synonyms of European spiders. Part IV. C. J. Lundström, Uppsala, 375–645.
- Tikader BK (1982) Part 1. Family Araneidae (= Argiopidae). Typical orb-weavers. In: *The fauna of India. Spiders: Araneae*. Vol. II. Zoological Survey of India, Calcutta, 293 pp.
- Thorell T (1890) Studi sui ragni Malesi e Papuani. IV, 1. *Annali del Museo Civico di Storia Naturale di Genova* 28: 5–421.
- Thorell T (1898) Viaggio di Leonardo Fea in Birmania e regioni vicine. LXXX. Secondo saggio sui Ragni birmani. II. Retitelariae et Orbitelariae. *Annali del Museo Civico di Storia Naturale di Genova* 39: 271–378.
- WSC (2021) World Spider Catalog, version 22.5. Natural History Museum Bern. <https://doi.org/10.24436/2> [accessed on 2021-8-20]
- Yao Z, Wang X, Li S (2021) Tip of the iceberg: species diversity of *Pholcus* spiders (Araneae, Pholcidae) in Changbai Mountains, Northeast China. *Zoological Research* 42(3): 267–271. <https://doi.org/10.24272/j.issn.2095-8137.2020.214>
- Yin CM, Wang JF, Zhu MS, Xie LP, Peng XJ, Bao YH (1997) *Fauna Sinica: Arachnida: Araneae: Araneidae*. Science Press, Beijing, 460 pp.
- Yin CM, Peng XJ, Yan HM, Bao YH, Xu X, Tang G, Zhou QS, Liu P (2012) *Fauna Hunan: Araneae in Hunan, China*. Hunan Science and Technology Press, Changsha, 1590 pp.