


RESEARCH

Open Access



Mineralization of the herbicide swep by a two-strain consortium and characterization of a new amidase for hydrolyzing swep

Long Zhang^{1,2} , Ping Hang¹, Xiyi Zhou¹, Chen Dai¹, Ziyi He¹ and Jiandong Jiang^{1,3*}

Abstract

Background: Swep is an excellent carbamate herbicide that kills weeds by interfering with metabolic processes and inhibiting cell division at the growth point. Due to the large amount of use, swep residues in soil and water not only cause environmental pollution but also accumulate through the food chain, ultimately pose a threat to human health. This herbicide is degraded in soil mainly by microbial activity, but no studies on the biotransformation of swep have been reported.

Results: In this study, a consortium consisting of two bacterial strains, *Comamonas* sp. SWP-3 and *Alicyclophilus* sp. PH-34, was enriched from a contaminated soil sample and shown to be capable of mineralizing swep. Swep was first transformed by *Comamonas* sp. SWP-3 to the intermediate 3,4-dichloroaniline (3,4-DCA), after which 3,4-DCA was mineralized by *Alicyclophilus* sp. PH-34. An amidase gene, designated as *ppa*, responsible for the transformation of swep into 3,4-DCA was cloned from strain SWP-3. The expressed Ppa protein efficiently hydrolyzed swep and a number of other structural analogues, such as propanil, chlorpropham and propham. Ppa shared less than 50% identity with previously reported arylamidases and displayed maximal activity at 30 °C and pH 8.6. Gly449 and Val266 were confirmed by sequential error prone PCR to be the key catalytic sites for Ppa in the conversion of swep.

Conclusions: These results provide additional microbial resources for the potential remediation of swep-contaminated sites and add new insights into the catalytic mechanism of amidase in the hydrolysis of swep.

Keywords: *Comamonas* sp. SWP-3, *Alicyclophilus* sp. PH-34, Consortium, Swep, 3,4-Dichloroaniline, Degradation

Introduction

Carbamate pesticides are a new class of broad-spectrum pesticides that function as insecticides, acaricides and herbicides [1]. These compounds are highly selective, efficient and widely used in agriculture, forestry and animal husbandry. Over 1000 types of carbamate pesticides have been developed, and their use has exceeded that of organophosphorus pesticides, with the sales of carbamate herbicides being only second to pyrethroid pesticides [1].

However, the extensive use of carbamate herbicides leads to the presence of carbamate herbicide residues in the environment, threatening ecosystems and human health [2–4]. Since the 1970s, the use of carbamate herbicides has increased every year.

Among these compounds, swep (methyl *N*-(3,4-dichlorophenyl) carbamate) is an excellent herbicide that kills weeds by interfering with metabolic processes and inhibiting cell division at the growth point [5, 6]. Due to the large amount of swep used (1–1.5 kg of 25% wettable powder per 667 m²), swep residues in soil and water not only cause environmental pollution but also accumulate through the food chain, ultimately pose a threat to human health [7]. Swep was reported to be highly toxic to

*Correspondence: jiang_jjd@njau.edu.cn

¹ Department of Microbiology, Key Lab of Microbiology for Agricultural Environment, Ministry of Agriculture, College of Life Sciences, Nanjing Agricultural University, Nanjing 210095, China

Full list of author information is available at the end of the article



© The Author(s) 2020. This article is licensed under a Creative Commons Attribution 4.0 International License, which permits use, sharing, adaptation, distribution and reproduction in any medium or format, as long as you give appropriate credit to the original author(s) and the source, provide a link to the Creative Commons licence, and indicate if changes were made. The images or other third party material in this article are included in the article's Creative Commons licence, unless indicated otherwise in a credit line to the material. If material is not included in the article's Creative Commons licence and your intended use is not permitted by statutory regulation or exceeds the permitted use, you will need to obtain permission directly from the copyright holder. To view a copy of this licence, visit <http://creativecommons.org/licenses/by/4.0/>. The Creative Commons Public Domain Dedication waiver (<http://creativecommons.org/publicdomain/zero/1.0/>) applies to the data made available in this article, unless otherwise stated in a credit line to the data.

fish [8], and in rats the mortality rate reached 50% when the orally administered concentration of swep reached 522 mg/kg. Furthermore, the mortality of carp after 48 h was more than 50% when the concentration of swep exceeded 2.6 mg/L [8]. Swep can be absorbed through the human respiratory tract, digestive tract and skin, subsequently inhibiting the activity of acetylcholinesterase, causing clinical manifestations that are similar to those of organophosphorus pesticides [8]. 3,4-Dichloroaniline (3,4-DCA) was reported to be the primary metabolite of swep and also showed toxic effects on mammals and fish, as well as on the human immune system [9, 10]. The environmental fates of swep and its metabolite 3,4-DCA has attracted much attention.

Microbial biodegradation is the primary pathway for the removal of organic pollutants from environments [11–14]. Numerous bacterial strains, such as species with in the genus of *Variovorax* [15, 16], *Sphingomonas* sp. strain Y57 [17] and *Achromobacter* sp. strain ANB-1 [18], have been isolated and characterized from various habitats that are capable of mineralizing 3,4-DCA. Eleven genes that responsible for the aniline derivative oxygenation (*dcaQTA1A2BR*) and catechol ortho-cleavage catabolism (*ccdRCFDE*) have been also widely reported [16, 18]. However, to date, no studies on the biotransformation of swep have been reported and enzymes involving in the degradation of swep have also not been characterized previously.

In this study, the mineralization of swep by a consortium consisting of *Comamonas* sp. SWP-3 and *Alicyclophilus* sp. PH-34 was investigated. A new amidase (Ppa) capable of transforming swep to 3,4-DCA was characterized, and the key amino acid residues in Ppa required for catalysis were investigated. The results of this study will add new insights into the biodegradation of carbamate herbicides.

Materials and methods

Chemical compounds and medium

J&K Chemical Co., Ltd. (Shanghai, China) was the source for obtaining of all chemical compounds (purity \geq 98%). TaKaRa Biotechnology Co., Ltd. (Dalian, China) provided all of the molecular biology reagents. Using mediums were derived from Zhang et al. [19] and Hang et al. [20].

Bacterial strains, plasmids and culture conditions

Using primers, bacterial strains and plasmids are shown in Additional file 1: Table S1 and Table 1, respectively. The concentrations of used antibiotics were carried out as previously described [21].

Strain isolation and characterization

The swep-contaminated soil was obtained from a pesticide factory in Nantong, China. 100 g of the soil was added into 1 L of mineral salt medium (MSM) containing 30 mg/L swep and incubated at 30 °C for 7 days. The

Table 1 Strains and plasmids used in this study

Strains and plasmids	Characteristics	Source or reference(s)
Strains		
<i>E. coli</i> DH5a	F ⁻ <i>recA1 endA1 thi-1 supE44 relA1 deoR</i> Δ (<i>lacZYA-argF</i>)U169 Φ 80 <i>dlacZ</i> Δ M15	Invitrogen
<i>E. coli</i> BL21(DE3)	F ⁻ <i>ompT hsdS_B(r_Bm_B) dcm gal</i> λ (DE3)	Invitrogen
<i>Comamonas</i> sp. SWP-3	Wild type, Str ^r , capable of degrading various herbicides	This study
<i>Comamonas</i> sp. SWP-3 M	The <i>ppa</i> gene-knockout mutant of strain SWP-3 with <i>ppa</i> gene, Str ^r	This study
<i>Comamonas</i> sp. SWP-3C	Mutant of strain SWP-3 with <i>ppa</i> gene restored, Str ^r	This study
<i>Alicyclophilus</i> sp. PH-34	Wild type, Amp ^r , capable of degrading various aniline derivatives	This study
Plasmids		
pMD19-T	TA cloning vector; Amp ^r	TaKaRa
pEX18-Gm	Suicide vector; Gm ^r	TaKaRa
pBBR1MCS-2	Broad host-range vector; kanamycin ^r (Km ^r)	Lab store
pRK2013	Conjugation helper plasmid	Lab store
pET-29a (+)	Expression vector; Km ^r	Invitrogen
pMCS2-ppa	pBBR1MCS-2 containing the <i>ppa</i> gene; Km ^r	This study
pET-ppa	pET-29a (+) containing the <i>ppa</i> gene; Km ^r	This study
pEX18-ppa	pEX18-Gm containing the <i>ppa</i> gene; Gm ^r	This study
pMD19-ppa	pMD19-T containing the <i>ppa</i> gene; Amp ^r	This study
pMD19-ppa-T1	pMD19-T containing the <i>ppa-T1</i> gene; Amp ^r	This study
pMD19-ppa-T2	pMD19-T containing the <i>ppa-T2</i> gene; Amp ^r	This study

enrichment culture (15 mL) was subsequently inoculated into 100 mL of fresh MSM (containing 30 mg/L of swep) and cultured as previously described [21]. Enrichment solution with stable swep degradation activity was diluted and spread onto Luria–Bertani (LB) agar plates containing 30 mg/L of swep and incubated at 30 °C for 5 days. Different forms of individual colonies on the plates were picked and inoculated into 1/4 R2A medium (supplemented with 30 mg/L of swep or 3,4-DCA) and then checked for their degradation abilities after 5 days. Instead, a strain (designated SWP-3) showed significantly swep-transforming ability and another strain (designated PH-34) possessed the capability of catabolizing 3,4-DCA were isolated using swep or 3,4-DCA as the substrates. The isolates were identified as previously described [20, 21].

Synergistic catabolism of swep by the two-strain consortium

Strains SWP-3 and PH-34 were individually cultured in LB broth, and the cells were collected and washed twice with sterilized MSM medium. The OD₆₀₀ of each strain resuspended in MSM medium was adjusted to 1.0, after which equal volumes of each strain were mixed. For synergistic degradation, the mixture was inoculated into 100 mL of MSM medium (containing 30 mg/L of swep or 3,4-DCA) at a final OD₆₀₀ of 0.2 and then was incubated at 30 °C with shaking at 160 rpm on a rotary shaker. For individual degradation assays, strain SWP-3 or PH-34 was inoculated into 100 mL of MSM medium (containing 30 mg/L of swep or 3,4-DCA) at final OD₆₀₀ values of 0.2 and incubated under the same conditions. Samples were withdrawn periodically, and the concentrations of swep/3,4-DCA were determined by HPLC. Spectrophotometer (UV-2450, SHIMADZU, Japan) was used to determine the cell growth at OD₆₀₀. All of these experiments were replicated three times.

Substrate spectra of strain SWP-3 and strain PH-34

The degradation capacity of strain SWP-3 for other structural analogues of swep (such as linuron, diuron, carbofuran, carbaryl, diflufenuron, propanil, prophan and chlorprophan) were studied. Strain SWP-3 (0.4 mL, OD₆₀₀ = 1.0) was inoculated into 20 mL of MSM medium containing 30 mg/L of various of substrates. The cultures were incubated at 30 °C, 160 rpm for 5 days, after which the concentrations of the substrates were detected by HPLC. To investigate the degradation substrates by strain PH-34, aniline derivatives, including *m*-chloroaniline, *m*-methylaniline, *p*-methylaniline, 3-bromoaniline, 3-chloro-4-methylaniline, 3-chloro-4-methoxybenzenamine,

4-bromoaniline, 4-bromo-3-chloroaniline, *p*-chloroaniline and 4-isopropylaniline were tested as described above.

Chemical analysis

The analysis of swep, its metabolite 3,4-DCA and analogues of swep and 3,4-DCA, were performed by HPLC, the details for which are described as before [18, 21].

Cloning of the swep hydrolase gene

Genomic DNA was extracted and purified from strain SWP-3 using a commercial genomic DNA extraction kit (Solarbio Science and Technology Company) according to the manufacturers' instructions and was subsequently partially digested with *Sau3A*I. The shotgun method was used to clone the hydrolase gene and performed as described previously [21]. The transformants were plated onto LB agar containing 100 mg/L ampicillin and 0.5 mM 4-acetaminophenol (a structural analogue of swep) and then incubated at 37 °C for 12 h. Brown colonies potentially harboring the target amidase were selected for exhibiting the capacity to transform 4-acetaminophenol into the brown product 4-aminophenol [22]. Positive clones were further tested for their ability to hydrolyze swep by HPLC, and then sequenced immediately. Analyzing the sequence results was performed as previously described methods [21].

Gene expression and purification of Ppa

A suspected swep hydrolase gene (designated *ppa*) was cloned and Ppa was expressed as an *N*-terminal fusion to a hexa-histidine tag (His-6) to facilitate purification. The primers used to amplify the *ppa* gene are listed in Additional file 1: Table S1. PCR product was connected with pET-29a (+), and then transformed into *E. coli* BL21. The purification procedure of Ppa is described in Additional file 1 in detail.

Enzymatic characterization of Ppa

A standard enzymatic assay was performed in 3 mL of Tris–HCl buffer (100 mM, pH 8.0) containing 10 mg/L swep. The reaction was initiated by adding the purified Ppa to a final concentration of 0.16 µg/mL and was incubated at 30 °C for 30 min before being stopped by adding 3 mL of dichloromethane. The determination of thermal stability, optimal reaction temperature, optimum pH and the effects of different metal ions are described in Additional file 1 in detail.

To determine the substrate spectrum of Ppa and estimate its kinetic values to different substrates, a detailed procedure for which is also included in Additional file 1.

Genetic disruption and complementation

To disrupt the *ppa* gene by gene targeting, two DNA fragments (approximately 730 bp flanking each end of *ppa*) were generated by PCR using the primer pairs PP1-F/PP1-R and PP2-F/PP2-R (Additional file 1: Table S1). Subsequently, the two fragments were joined using the primer pair PP1-F/PP2-R (Additional file 1: Table S1) by overlap extension PCR. The resulting product was then cloned into the XbaI and BamHI sites of the plasmid pEX18-Gm (Takara) to yield pEX18-*ppa*, which was then conjugated into strain SWP-3 from *E. coli* DH5 α with the help of the plasmid pRK2013. The transconjugants were selected on LB plates supplemented with streptomycin (Str) and gentamicin (Gm). The mutant SWP-3 M with the disrupted *ppa* gene was checked by PCR. For the complementation of the disrupted *ppa* gene, the *ppa* gene was amplified with the primer pair PPA1-F/PPA1-R (Additional file 1: Table S1) and ligated into the corresponding sites of the broad-host-range plasmid pBBR1-MCS2 [23], yielding pBBR1-*ppa*. The plasmid pBBR1-*ppa* was then mobilized into the *ppa*-disrupted mutant through electroporation to generate the complemented strain SWP-3C. The swep degradation abilities of strains SWP-3, SWP-3M and SWP-3C were assessed as described above.

RT-qPCR

Strain SWP-3 was pre-cultured in MSM medium with different substrates (0.3 mM of swep, propanil, chlorpropham, prophan, glucose or 4-acetaminophenol) at 30 °C for 12 h, after which total RNA was extracted as the way described before [18]. The RT-qPCR procedure is described in Additional file 1 in detail.

Identification of the key catalytic residues of Ppa for swep hydrolysis

To generate the Ppa variants with no hydrolytic activity against swep, sequential error prone PCR was performed. Unlike high-fidelity PCR, dCTP (2 or 8 mM), dTTP (2 or 8 mM), Mg²⁺ (5, 6, or 7.5 mM) and Mn²⁺ (0.05, 0.2, or 0.6 mM) were added to the PCR system (50 μ L) to improve the possibility of error. An XbaI site was incorporated into the primers (Additional file 1: Table S1) to facilitate directional cloning of the amplified PCR product into pMD-19T. The plasmid pMD19T-*ppa* was used as the template and was used at a 10-fold dilution compared to the normal amount used for PCR amplification of *ppa*. The resulting product (*ppa*-T) was then cloned into the XbaI site of the plasmid pMD-19T to yield pMD-19T-*ppa*-T. Subsequently, pMD19T-*ppa* and pMD-19T-*ppa*-T were transformed into competent *E. coli* DH5 α cells, which were plated onto LB plates containing 100 mg/L ampicillin (Amp) and 0.5 mM

4-acetaminophenol to construct a variant library of Ppa. Clones showing no ability to form brown halos compared to the wild-type strain were screened. Clones showing the ability to hydrolyze swep were selected for further testing via enzymatic assays.

Results

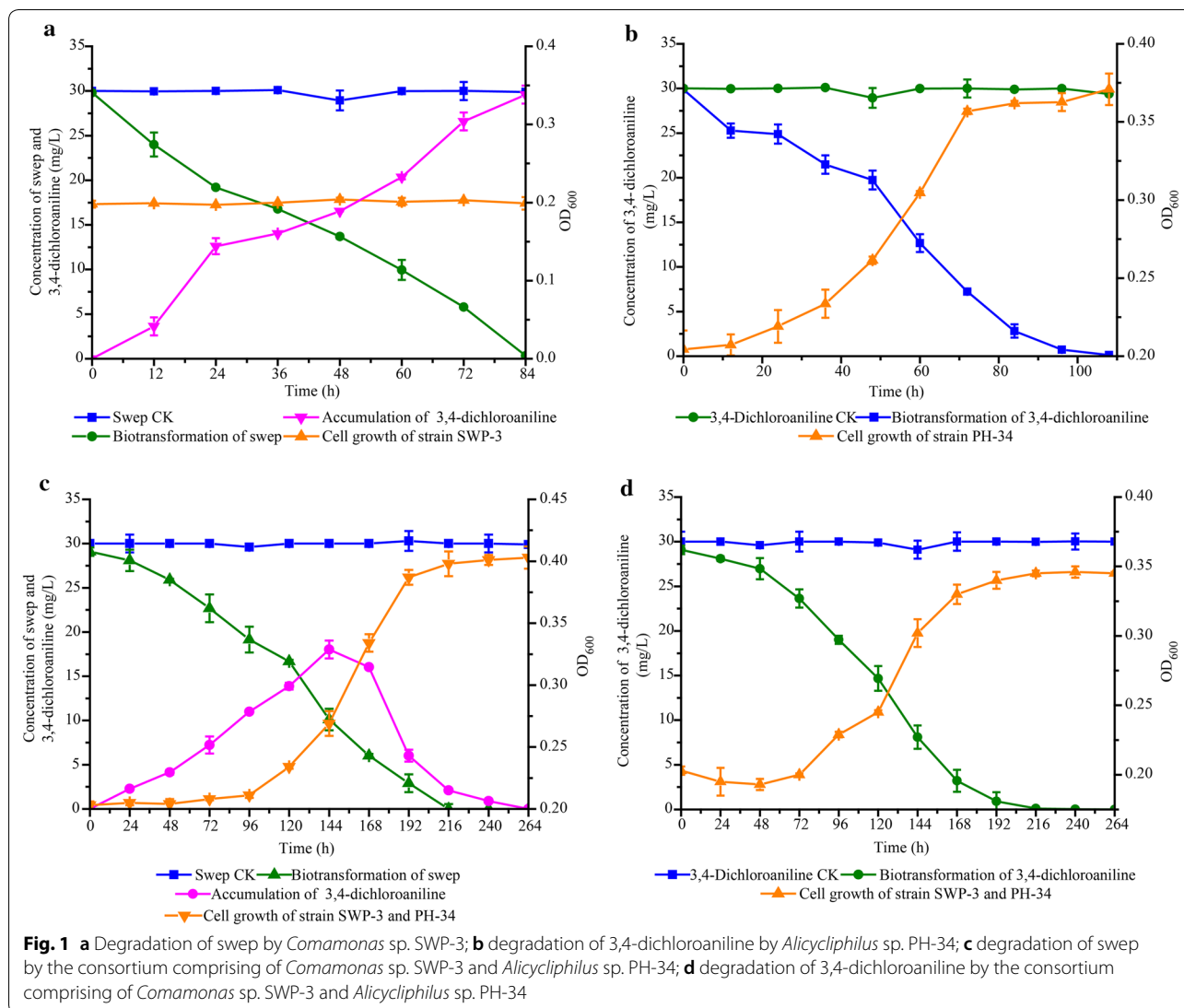
Isolation and identification of strains involved in swep degradation

Isolation of a pure culture that can mineralize swep from the enrichment culture failed. Instead, bacterial strains that capable of hydrolyzing swep to 3,4-DCA (namely strain SWP-3, deposited in CCTCC under the number CCTCC AB 2019366) or mineralizing 3,4-DCA (namely strain PH-34, deposited in CCTCC under the number CCTCC AB 2019367) were isolated. Both the SWP-3 and PH-34 strains are non-spore-forming, motile with terminal flagella and rod-shaped (0.8–0.9 \times 1.7–1.8 μ m and 0.7–0.8 \times 1.3–1.4 μ m, respectively) (Additional file 1: Fig. S1). Phylogenetic analysis based on the 16S rRNA gene sequences showed that strain SWP-3 clustered within the *Comamonas* species and formed a subclade with *Comamonas terrigena* NBRC 13299^T (99.8% identity) (Additional file 1: Fig. S2), while strain PH-34 clustered within the *Alicyclophilus* genus and formed a subclade with *Alicyclophilus denitrificans* K601^T (100% identity) (Additional file 1: Fig. S3). Thus, strains SWP-3 and PH-34 were preliminarily identified as *Comamonas* sp. and *Alicyclophilus* sp., respectively.

The substrate spectra of strains SWP-3 and PH-34 were investigated. In addition to swep, strain SWP-3 could also metabolize propanil, chlorpropham and prophan. However, PH-34 could degrade aniline compounds such as *m*-chloroaniline, *m*-methylaniline, 4-bromo-3-chloroaniline and *p*-chloroaniline.

Synergistic biodegradation of swep by the two-strain consortium

When swep was degraded by strain SWP-3 alone, 30 mg/L of swep was efficiently removed in 84 h, with one intermediate product observed that accumulated without further transformation, even after 110 h of incubation (Fig. 1a). No growth of strain SWP-3 was observed, showing that it could not use swep as a sole carbon source for growth. When strain PH-34 was incubated with 30 mg/L of 3,4-DCA as the sole carbon source, the compound was completely degraded within 5 days, and the cell density of strain PH-34 increased significantly (Fig. 1b). When swep was degraded by the consortium consisting of both the SWP-3 and PH-34 strains, 30 mg/L of swep was completely degraded, and the intermediate 3,4-DCA initially appeared (within 144 h) before disappearing at 264 h. Cell growth of the consortium was observed (Fig. 1c). For



the degradation of 3,4-DCA by the consortium, 30 mg/L of 3,4-DCA was completely degraded in 216 h (Fig. 1d) (the inoculum of strain PH-34 in the synergistic biodegradation test was half of that used in the individual biodegradation test). Cell growth was also observed in this assay, primarily due to the growth of strain PH-34 (Fig. 1c, d).

Cloning of the amidase gene *ppa*

A positive clone which can degrade 4-acetaminophenol (producing a brown color) was obtained from about 18,000 transformants, and the inserted fragment (4919 bp) was sequenced. Based on the ORF analysis and BLASTp results, one ORF encoding a protein with moderate identity to amidases was identified. The transformant harboring the gene also showed the ability to transform swep. Therefore, this ORF, namely *ppa*

was the swep hydrolase gene. Sequence analysis showed that the *ppa* gene is 1488 bp in length and encodes a protein with 495 amino acid residues. Ppa showed the highest identity to acylamidase (*Rhodococcus* sp. TA37; K9NBS6.1) (33.5%) and the putative amidase AF_1954 (*Archaeoglobus fulgidus* sp. DSM 4304; O28325.1) (32.9%) (available from the NCBI Swissprot protein database).

Based on the selection for a double-crossover event, a *ppa*-disrupted SWP-3 M mutant was obtained. Compared with the wild type strain SWP-3 (Additional file 1: Fig. S4A), the cell suspension assay showed that the mutant strain SWP-3M strain lost the capacity to transform swep (Additional file 1: Fig. S4C), whereas the *ppa*-complemented strain SWP-3C (harboring the plasmid pBBR1-*ppa*) was restored for the ability to transform

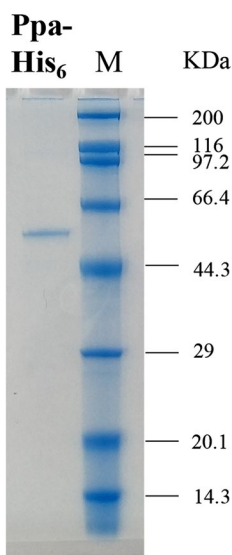


Fig. 2 SDS-PAGE of the recombinant Ppa purified from *E. coli* BL21 (DE3) (pET-ppa) by Ni²⁺-NTA. Ppa-His₆ the purified recombinant Ppa; M low molecular protein marker

sweep (Additional file 1: Fig. S4B). These results showed that *ppa* is the only gene responsible for sweep hydrolysis in strain SWP-3.

The gene *ppa* was constitutively transcribed, which was not notably enhanced by its substrates (sweep, propanil, chlorpropham, propham and 4-acetaminophenol) compared to glucose (Additional file 1: Fig. S5), this was in accordance with the corresponding accumulation of their products (data not shown).

The catalytic characteristics of Ppa

Recombinant Ppa was successfully expressed and purified. The purified enzyme appeared as a single band with an approximately molecular mass of 55 kDa in the SDS-PAGE analysis (Fig. 2). Ppa was further confirmed to catalyze the hydrolysis of sweep to 3,4-DCA (Fig. 3) as well as the hydrolysis of some other herbicides, such as propanil, chlorpropham and propham (Additional file 1: Figs. S6, S7, S8). The kinetics values of Ppa for sweep, propanil, chlorpropham and propham are summarized in Table 2. Propanil appeared to be the best substrate for Ppa, with K_m and k_{cat} values of 1.51 μ M and 219.90 s⁻¹, respectively.

The effects of different factors on Ppa activity have been well investigated. Ppa showed maximal activity at 30 °C, and retained over 70% of its relative activity at 25–55 °C (Additional file 1: Fig. S9A). Ppa retained the highest activity at pH 8.6 and showed relatively high activity at pH values ranging from 7.0 to 10.0 (Additional file 1: Fig.

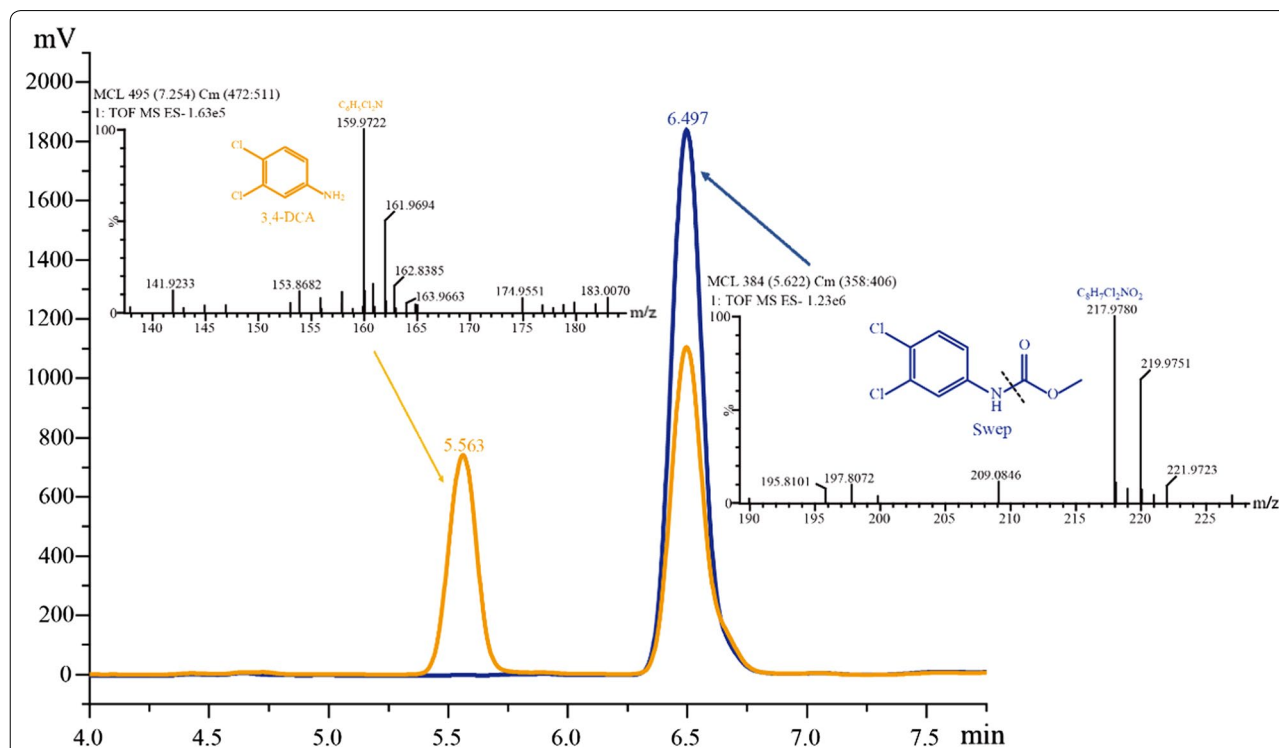
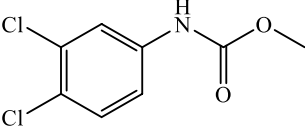
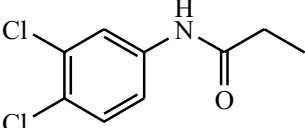
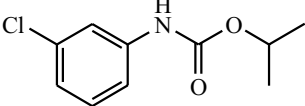
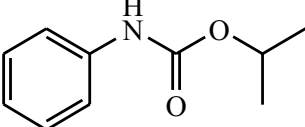


Fig. 3 LC-MS analyses of the metabolite produced during sweep degradation by recombinant Ppa purified from *E. coli* BL21 (DE3) (pET-ppa). The HPLC profiles of sweep [Rt (min) = 6.497] and the metabolite 3,4-DCA [Rt (min) = 5.563] are indicated. The mass spectra of sweep {m/z = 217.9780 [M - H]⁻} (right) and 3,4-DCA {m/z = 159.9722 [M - H]⁻} (left) are also shown

Table 2 Kinetic constants of Ppa for swep, propanil, chlorpropham and propham

Formula	K_m (μM)	k_{cat} (s^{-1})	Catalytic efficiency k_{cat}/K_m ($\mu\text{M}^{-1} \text{s}^{-1}$)
 Swep	10.40 ± 1.20	14.58 ± 2.50	1.40
 Propanil	1.51 ± 0.30	219.90 ± 8.56	145.63
 Chlorpropham	55.22 ± 5.23	0.99 ± 0.11	0.02
 Propham	140.90 ± 11.32	0.73 ± 0.04	0.01

Values are the means ± standard deviations from three experiments

S9B). In addition, Al^{3+} , Mn^{2+} , Co^{2+} , Cu^{2+} , Fe^{3+} , Cd^{2+} and Zn^{2+} were observed to significantly inhibit Ppa activity, and Ni^{2+} , Mg^{2+} and Ca^{2+} inhibited approximately 20–30% of Ppa activity at a concentration of 1 mM (Additional file 1: Fig. S9C).

Identification the key catalytic residues for Ppa in the conversion of swep

By performing sequential error prone PCR, two clones that could not form brown halos around colonies were obtained from approximately 15,000 transformants. HPLC analysis revealed that these two clones lost the ability to degrade swep. The corresponding mutated genes *ppa-T1* and *ppa-T2* were then sequenced in triplicate. Compared with the wild-type Ppa protein, the Ppa-T1 and Ppa-T2 mutant enzymes had individual amino acid residue mutations of Gly449Asp and Val266Glu, respectively. These results show that Gly449 and Val266 are key catalytic residues for Ppa in the conversion of swep. Alignment of the amino acid sequences of Ppa and other 5 biochemically characterized amidases (Mah, PamH, BbdA, TccA and LibA) (Fig. 4) revealed high conservation

of the Gly/Ser-rich motif (GGSS[GS]G) and that Gly449 is a conserved residue in these enzymes.

Discussion

In this study, a swep-mineralizing consortium was obtained from an enrichment culture. Although strain SWP-3 could not grow when swep was used as the sole carbon source, it could survive in the enrichment culture, suggesting that strain SWP-3 might have used some small aliphatic metabolites produced from other strains in the enrichment culture that could mineralize 3,4-DCA. This hypothesis was confirmed by the isolation of a 3,4-DCA-mineralizing strain (*Alicyclophilus* sp. PH-34), which could use 3,4-DCA as a sole carbon and energy source for growth. More interestingly, though species within the various genus (such as *Variovorax*, *Sphingomonas* and *Achromobacter*) are capable of mineralizing 3,4-DCA, no species have been reported possessing the 3,4-DCA degradation ability within the genus of *Alicyclophilus*. Degradation of xenobiotics by the microbial are complicated and rarely completely degraded by a single strain [18]. Most of them need to be completely degraded by the synergistic action of microbial consortium. The consortium tends to have more

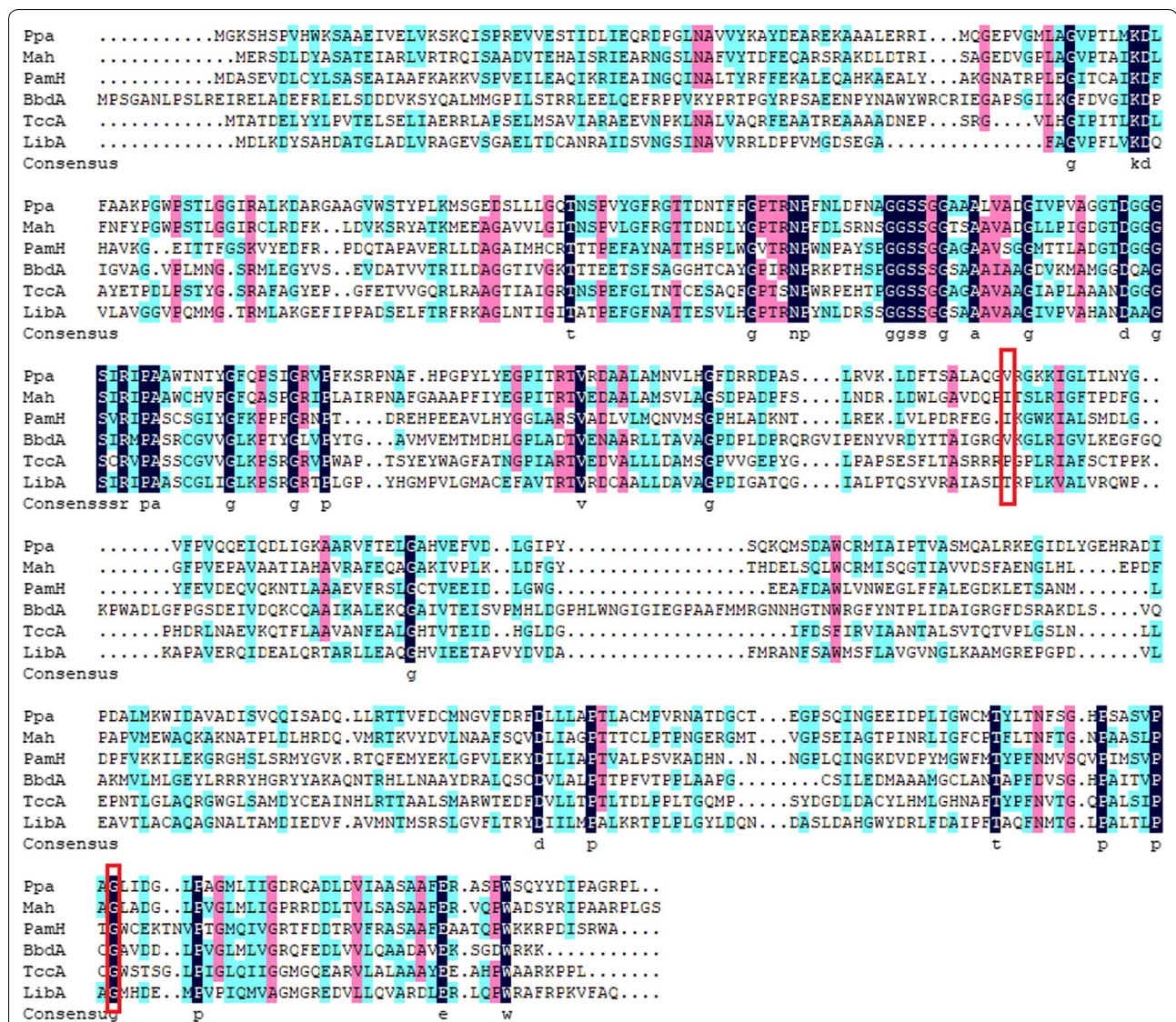
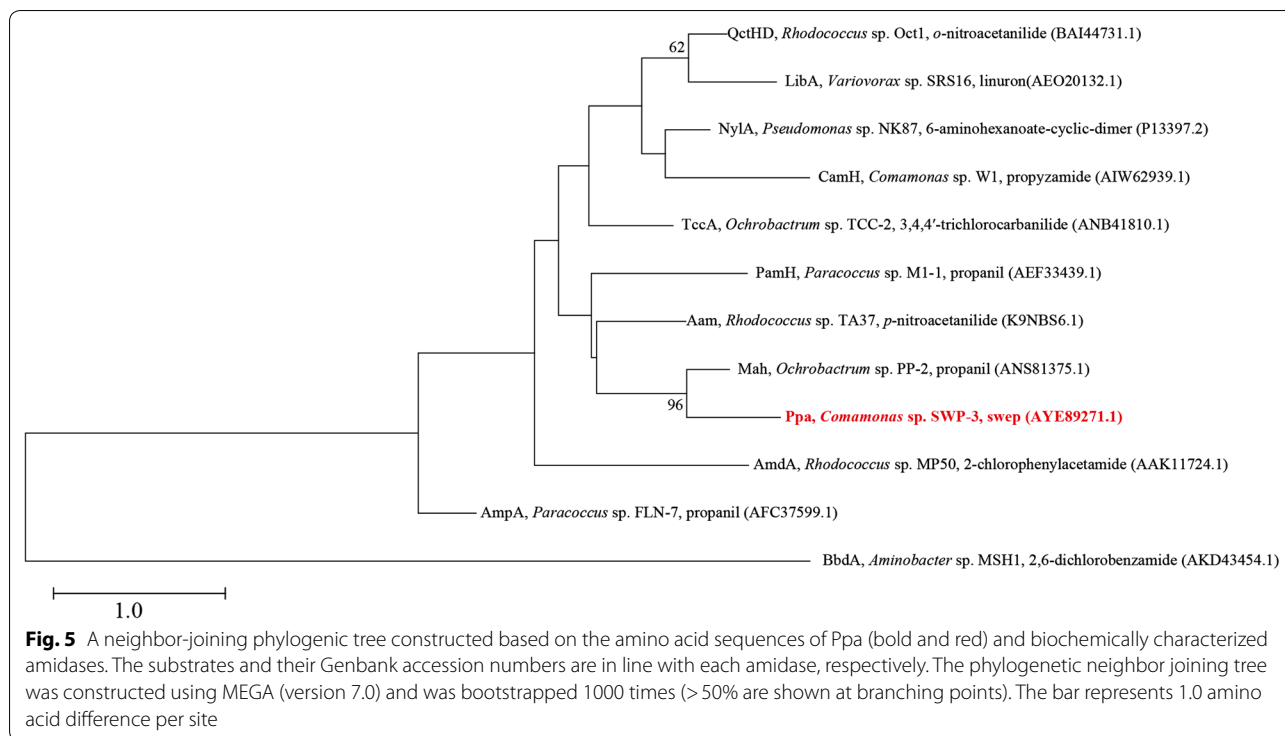


Fig. 4 Alignment of amino acid sequences of Ppa and other 5 biochemically characterized amidases from GenBank. Identical amino acid residues are marked in black; similar residues are marked in pink. The amino acid residue sites of Ppa that were mutant by error-PCR are marked by red boxes

degradative functions and higher degradation efficiency than single strains [24–26]. Thus, in this study, the consortium comprising strains SWP-3 and PH-34 could efficiently and completely mineralize swep, providing a good candidate for the bioremediation of swep-contaminated sites.

The identified Ppa enzyme shares low amino acid identities (28.9 to 33.5%, Swissprot protein database) with other biochemically characterized amidases. Ppa also showed relatively low identity (27 to 50%, on amino acid level) with amidases reported to be able to degrade xenobiotics. For example, Ppa exhibited the highest identity (49.8%) with Mah (the propanil hydrolase, ANS81375.1) [18]; a 34.6% identity with PamH

(propanil hydrolase, AEF33439.1) [27]; a 30.5% identity with TccA (trilocarban hydrolase, ANB41810.1) [28]; a 30% identity with BbdA (2,6-dichlorobenzamide hydrolase, AKD43454.1) [29]; a 28.3% identity with LibA (linuron hydrolase, AEO20132.1) [16]; and a 28% identity with CamH (propylamide hydrolase, AIW62939.1) [30]. The neighbor-joining phylogenetic tree based on the amino acid sequence of Ppa and the functionally characterized amidases (capable of degrading xenobiotics) and combine with the high conservation of the Gly/Ser-rich motif (GGSS[GS]G) and the catalytic triad (Ser–Ser–Lys) (Fig. 4) indicated that Ppa is an arylamidase in the amidase signature (as) enzymes family (Fig. 5).



Amidases play key roles in the initial degradation of a wide range of amide xenobiotics [21, 22, 31–34]. To date, diverse amidases involved in the biotransformation of xenobiotics have been reported in many different genera. AmpA/PamH, DmhA and Mah (all for the hydrolysis of propanil) were identified from the genera *Paracoccus* [22, 27], *Sphingomonas* [35] and *Ochrobactrum* [21], respectively. LibA and TccA2 were identified from *Variovorax* [16] and *Diaphorobacter* [18] and are responsible for the initial degradation of linuron. BbdA was identified from *Aminobacter* and initiates the degradation of 2,6-dichlorobenzamide [36]. TccA was identified from *Ochrobactrum* and is involved in the hydrolysis of triclocarban [28]. To the best of our knowledge, no amidases have been reported that initiate the degradation of swep. In this study, Ppa was identified as the functional enzyme involved in swep-transformation and was also shown to hydrolyze some other carbamate herbicides (propham and chlorpropham) and the amide herbicide (propanil). The discovery of the amidase Ppa provides a good candidate for the study of the catalytic mechanism of amidases.

Conclusion

In this study, a consortium consisting of two bacterial strains, *Comamonas* sp. SWP-3 and *Alicyclophilus* sp. PH-34, was enriched from a contaminated soil sample and shown to be capable of mineralizing swep. A novel swep-transforming amidase gene, *ppa*, has been cloned from

Comamonas sp. SWP-3, and the enzyme, Ppa, has been well characterized. This is the first detail report on the biodegradation of swep. These results showed that a bacterial consortium can contain catabolically synergistic species for swep mineralization and our findings provide additional microbial resources for the potential remediation of swep-contaminated sites and add new insights into the catalytic mechanism of amidase in the hydrolysis of swep.

Nucleotide sequence accession number

The 16S rRNA and *ppa* gene sequences of strain SWP-3 were deposited at DDBJ/ENA/GenBank under the accession numbers of MH819768 and MH822147, respectively. The 16S rRNA gene sequence of strain PH-34 was deposited at DDBJ/ENA/GenBank under accession number of MH819769.

Supplementary information

Supplementary information accompanies this paper at <https://doi.org/10.1186/s12934-020-1276-9>.

Additional file 1: Figure S1. The transmission electron micrographs of strains SWP-3 and PH-34. **Figures S2, S3.** The phylogenetic relationship of strains SWP-3 and PH-34, respectively. **Figure S4.** Degradation curve of swep by the wild type strain, complement strain and the mutant strain. **Figure S5.** RT-qPCR analysis of the transcription of *ppa*. **Figures S6, S7, S8.** HPLC-MS analysis of propanil, chlorpropham and propham hydrolyzed by Ppa, respectively. **Figure S9.** Effects of temperature, pH value and metal ions on the activities of the purified recombinant Ppa. **Table S1.** Primers that were used in this study.

Authors' contributions

LZ and PH conceived and designed the experiments. LZ, PH, XZ, CD and ZH performed the experiments and analyzed the data. LZ and JJ wrote the paper. All authors read and approved the final manuscript.

Funding

This work was supported by Grants from the National Natural Science Foundation of China (31670111, 31870087 and 31900077), the grant of National Key R&D Program of China (2018YFA0901200) and the China Postdoctoral Science Foundation (2018M630566).

Availability of data and materials

All materials described within this manuscript, and engineered strains are available on request.

Ethics approval and consent to participate

Our manuscript does not report data collected from humans or animals.

Consent for publication

Our manuscript does not contain any individual person's data in any form.

Competing interests

The authors declare that they have no competing interests.

Author details

¹ Department of Microbiology, Key Lab of Microbiology for Agricultural Environment, Ministry of Agriculture, College of Life Sciences, Nanjing Agricultural University, Nanjing 210095, China. ² College of Life Sciences, Huaibei Normal University, Huaibei 235000, China. ³ Jiangsu Provincial Key Lab for Organic Solid Waste Utilization, Nanjing Agricultural University, Nanjing 210095, China.

Received: 29 June 2019 Accepted: 2 January 2020

Published online: 07 January 2020

References

- Wei JC, Wei B, Yang W, He CW, Su HX, Wan JB, Li P, Wang YT. Trace determination of carbamate pesticides in medicinal plants by a fluorescent technique. *Food Chem Toxicol*. 2018;119:430–7.
- Fabbri D, Crime A, Davezza M, Medana C, Baiocchi C, Prevot AB, Pramauro E. Surfactant-assisted removal of swep residues from soil and photocatalytic treatment of the washing wastes. *Appl Catal B*. 2009;92:318–25.
- Trivedi VD, Majhi P, Phale PS. Kinetic and spectroscopic characterization of 1-naphthol 2-hydroxylase from *Pseudomonas* sp. strain C5. *Appl Biochem Biotechnol*. 2014;172:3964–77.
- Zhu SJ, Qiu JG, Wang H, Wang X, Jin W, Zhang YK, Zhang CF, Hu G, He J, Hong Q. Cloning and expression of the carbaryl hydrolase gene *mcbA* and the identification of a key amino acid necessary for carbaryl hydrolysis. *J Hazard Mater*. 2018;344:1126–35.
- Gao LM, Xu YQ, Wang GC, Wu CX, Chen BK. Analysis method of swep by HPLC. *Pest Sci Adm*. 2016;37:51–3.
- Bartha R, Pramer D. Transformation of the herbicide methyl-*N*-(3,4-dichlorophenyl)-carbamate (Swep) in soil. *Bull Environ Contam Toxicol*. 1969;4:240–5.
- Yun MS, Chen WJ, Deng F, Yogo Y. Propanil and swep inhibit 4-coumarate:CoA ligase activity in vitro. *Pest Manag Sci*. 2007;63:815–20.
- Barón M, Chueca A, López Gorgé J. In vitro and in vivo analyses of the mechanism of action of SWEP. *Pestic Biochem Phys*. 1986;26:343–52.
- Pothuluri J, Hinson J, Cerniglia C. Propanil: toxicological characteristics, metabolism, and biodegradation potential in soil. *J Environ Qual*. 1991;20:330–47.
- Salazar KD, Ustyugova IV, Brundage KM, Barnett JB, Schafer R. A review of the immunotoxicity of the pesticide 3,4-dichloropropionanilide. *J Toxicol Environ Health Part B*. 2008;11:630–45.
- Arora PK, Mohanta TK, Srivastava A, Bae H, Singh VP. Metabolic pathway for degradation of 2-chloro-4-aminophenol by *Arthrobacter* sp. SPG. *Microb Cell Fact*. 2014;13:164.
- Zhang J, Zhao MJ, Yu D, Yin JG, Zhang H, Huang X. Biochemical characterization of an enantioselective esterase from *Brevundimonas* sp. LY-2. *Microb Cell Fact*. 2017;16:112.
- Zhang H, Li MY, Li J, Wang GL, Liu Y. Purification and properties of a novel quizalofop-p-ethyl-hydrolyzing esterase involved in quizalofop-p-ethyl degradation by *Pseudomonas* sp. J-2. *Microb Cell Fact*. 2017;16:80.
- Huang X, He J, Yan X, Hong Q, Chen K, He Q, Zhang L, Liu XW, Chuang SC, Li SP, Jiang JD. Microbial catabolism of chemical herbicides: microbial resources, metabolic pathways and catabolic genes. *Pestic Biochem Physiol*. 2017;143:272–97.
- Dejonghe W, Berteloot E, Goris J, Boon N, Crul K, Maertens S, Höfte M, De Vos P, Verstraete W, Top EM. Synergistic degradation of linuron by a bacterial consortium and isolation of a single linuron-degrading *Variovorax* strain. *Appl Environ Microbiol*. 2003;69:1532–41.
- Bers K, Leroy B, Breugelmans P, Albers P, Lavigne R, Sørensen SR, Aamand J, De Mot R, Wattiez R, Springael D. A novel hydrolase identified by genomic-proteomic analysis of phenylurea herbicide mineralization by *Variovorax* sp. strain SRS16. *Appl Environ Microbiol*. 2011;77:8754–64.
- Zhang J, Sun JQ, Yuan QY, Li C, Yan X, Hong Q, Li SP. Characterization of the propanil biodegradation pathway in *Sphingomonas* sp. Y57 and cloning of the propanil hydrolase gene *prpH*. *J Hazard Mater*. 2011;196:412–9.
- Zhang L, Hang P, Hu Q, Chen XL, Zhou XY, Chen K, Jiang JD. Degradation of phenylurea herbicides by a novel bacterial consortium containing synergistically catabolic species and functionally complementary hydrolases. *J Agric Food Chem*. 2018;66:12479–89.
- Zhang L, Song M, Cao Q, Wu S, Zhao Y, Huang JW, Chen K, Li SP, Xia ZY, Jiang JD. *Camelimonas fluminis* sp. nov., a cyhalothrin-degrading bacterium isolated from river water. *Int J Syst Evol Microbiol*. 2015;65:3109–14.
- Hang P, Zhang L, Zhou XY, Hu Q, Jiang JD. *Rhizobium album* sp. nov., isolated from a propanil-contaminated soil. *Antonie Van Leeuwenhoek*. 2019;112:319–27.
- Zhang L, Hu Q, Hang P, Zhou XY, Jiang JD. Characterization of an arylamidase from a newly isolated propanil-transforming strain of *Ochrobactrum* sp. PP-2. *Ecotoxicol Environ Saf*. 2019;167:122–9.
- Zhang J, Yin JG, Hang BJ, Cai S, He J, Zhou SG, Li SP. Cloning of a novel arylamidase gene from *Paracoccus* sp strain FLN-7 that hydrolyzes amide pesticides. *Appl Environ Microbiol*. 2012;78:4848–55.
- Kovach ME, Elzer PH, Hill DS, Robertson GT, Farris MA, Roop RM, Peterson KM. Four new derivatives of the broad-host-range cloning vector pBBR1MCS, carrying different antibiotic-resistance cassettes. *Gene*. 1995;166:175–6.
- McCarty NS, Ledesma-Amaro R. Synthetic biology tools to engineer microbial communities for biotechnology. *Trends Biotechnol*. 2018;37:181–97.
- Liu XW, Chen K, Chuang SC, Xu XH, Jiang JD. Shift in bacterial community structure drives different atrazine-degrading efficiencies. *Front Microbiol*. 2019;10:88.
- Xu XH, Zarecki R, Medina S, Ofaim S, Liu XW, Chen C, Hu SH, Brom D, Gat D, Porob S, Eizenberg H, Ronen Z, Jiang JD, Freilich S. Modeling microbial communities from atrazine contaminated soils promotes the development of biostimulation solutions. *ISME J*. 2019;13:494–508.
- Shen WL, Chen HH, Jia KZ, Ni J, Yan X, Li SP. Cloning and characterization of a novel amidase from *Paracoccus* sp. M-1, showing aryl acylamidase and acyl transferase activities. *Appl Microbiol Biotechnol*. 2012;94:1007–18.
- Yun H, Liang B, Qiu JG, Zhang L, Zhao YK, Jiang JD, Wang AJ. Functional characterization of a novel amidase involved in biotransformation of triclocarban and its dehalogenated congeners in *Ochrobactrum* sp. TCC-2. *Environ Sci Technol*. 2016;51:291–300.
- Albers CN, Jacobsen OS, Aamand J. Using 2,6-dichlorobenzamide (BAM) degrading *Aminobacter* sp. MSH1 in flow through biofilters—initial adhesion and BAM degradation potentials. *Appl Microbiol Biotechnol*. 2014;98:957–67.
- Zhao BP, Hua XD, Wang F, Dong WL, Li ZK, Yang Y, Cui ZL, Wang MH. Biodegradation of propyzamide by *Comamonas testosteroni* W1 and cloning of the propyzamide hydrolase gene *camH*. *Bioresour Technol*. 2015;179:144–9.
- Fukuta Y, Koizumi S, Komeda H, Asano Y. A new aryl acylamidase from *Rhodococcus* sp. strain Oct1 acting on ω -lactams: its characterization and gene expression in *Escherichia coli*. *Enzym Microb Technol*. 2010;46:237–45.

32. Ko HJ, Lee EW, Bang WG, Lee CK, Kim KH, Choi IG. Molecular characterization of a novel bacterial aryl acylamidase belonging to the amidase signature enzyme family. *Mol Cells*. 2010;29:485–92.
33. Lavrov KV, Zalunin IA, Kotlova EK, Yanenko AS. A new acylamidase from *Rhodococcus erythropolis* TA37 can hydrolyze *N*-substituted amides. *Biochemistry*. 2010;75:1006–13.
34. Li Y, Chen Q, Wang CH, Cai S, He J, Huang X, Li SP. Degradation of acetochlor by consortium of two bacterial strains and cloning of a novel amidase gene involved in acetochlor-degrading pathway. *Bioresour Technol*. 2013;148:628–31.
35. Chen Q, Chen K, Ni HY, Zhuang W, Wang HM, Zhu JC, He Q, He J. A novel amidohydrolase (DmhA) from *Sphingomonas* sp. that can hydrolyze the organophosphorus pesticide dimethoate to dimethoate carboxylic acid and methylamine. *Biotechnol Lett*. 2016;38:703–10.
36. T'Syen J, Tassoni R, Hansen L, Sorensen SJ, Leroy B, Sekhar A, Wattiez R, De Mot R, Springael D. Identification of the amidase BbdA that initiates biodegradation of the groundwater micropollutant 2,6-dichlorobenzamide (BAM) in *Aminobacter* sp. MSH1. *Environ Sci Technol*. 2015;49:11703–13.

Publisher's Note

Springer Nature remains neutral with regard to jurisdictional claims in published maps and institutional affiliations.

Ready to submit your research? Choose BMC and benefit from:

- fast, convenient online submission
- thorough peer review by experienced researchers in your field
- rapid publication on acceptance
- support for research data, including large and complex data types
- gold Open Access which fosters wider collaboration and increased citations
- maximum visibility for your research: over 100M website views per year

At BMC, research is always in progress.

Learn more biomedcentral.com/submissions

