



WHO Grade IV Gliofibroma: A Grading Label Denoting Malignancy for an Otherwise Commonly Misinterpreted Neoplasm

Paola A. Escalante Abril
Miguel Fdo. Salazar
Nubia L. López García
Mónica N. Madrazo Moya
Yadir U. Zamora Guerra
Yadira Gandhi Mata Mendoza
Erick Gómez Apo
Laura G. Chávez Macías

Pathology Unit, Neuropathology Service,
Mexico General Hospital, Mexico City, Mexico

Received: March 2, 2015

Revised: May 10, 2015

Accepted: May 20, 2015

Corresponding Author

Miguel Fdo. Salazar, MD
Hospital General de México "Dr. Eduardo Liceaga",
Unidad de Patología, Servicio de Neuropatología,
Dr. Balmis 148, Col. Doctores, Delegación
Cuauhtémoc, C.P. 06726, México D.F.
Tel: +52-55-01-55-2789-2000
E-mail: k7nigricans@hotmail.com

We report a 50-year-old woman with no relevant clinical history who presented with headache and loss of memory. Magnetic resonance imaging showed a left parieto-temporal mass with annular enhancement after contrast media administration, rendering a radiological diagnosis of high-grade astrocytic neoplasm. Tumour sampling was performed but the patient ultimately died as a result of disease. Microscopically, the lesion had areas of glioblastoma mixed with a benign mesenchymal constituent; the former showed hypercellularity, endothelial proliferation, high mitotic activity and necrosis, while the latter showed fascicles of long spindle cells surrounded by collagen and reticulin fibers. With approximately 40 previously reported cases, gliofibroma is a rare neoplasm defined as either glio-desmoplastic or glial/benign mesenchymal. As shown in our case, its prognosis is apparently determined by the degree of anaplasia of the glial component.

Key Words: Gliofibroma; Bimorphic neoplasm; Desmoplastic glioma; Adult population; Tumour suppressor protein 53

Analogous to the mixed epithelial/mesenchymal tumours seen in Müllerian derivatives, some glial neoplasms can display a bimorphic appearance due to an accompanying mesodermal component. While gliosarcoma is probably the best-known paragon of this group, the existence of non-malignant mesenchymal constituents, different from the so-called Scherer's tertiary structures, is rare but feasible. Here, we describe a peculiar case of a high-grade astrocytic neoplasm (glioblastoma) blending with an innocuous spindle-cell component.

CASE REPORT

A 50-year-old female presented with headache and loss of memory over the previous six months. Magnetic resonance imaging scans showed a left parieto-temporal mass (70.82 × 48.56 × 43.97 mm) with significant perilesional oedema and post-contrast annular enhancement (Fig. 1A, B). Despite prompt tu-

mour sampling and analysis, the patient ultimately expired one month after the surgery. Necropsy was not authorized.

Histologically, the lesion showed areas unequivocally consistent with glioblastoma due to their microvascular proliferation, palisading necrosis, hypercellularity, pleomorphism, and high mitotic activity (Fig. 1C, D). These areas intermingled with cytologically bland, long spindle-cell fascicles (Fig. 1E, F) enveloped by sturdy collagen and fine reticulin fibers (Fig. 2A–D). As expected, immunoperoxidase-coupled reactions showed strong and diffuse expression of glial fibrillary acidic protein in the glioblastoma areas (Fig. 3A), while the spindled part of the neoplasm was exclusively positive for vimentin (Fig. 3B). Ki-67 expression was variable, with positivity as high as 50% in the astroglial regions (Fig. 3C) but with immunolabeling of less than 1% in the mesenchymal portion. Likewise, expression of p53 was largely diffuse in the gliomatous parts, albeit focally in some fusiform cells (Fig. 3D, E). No reaction was detected for epidermal growth

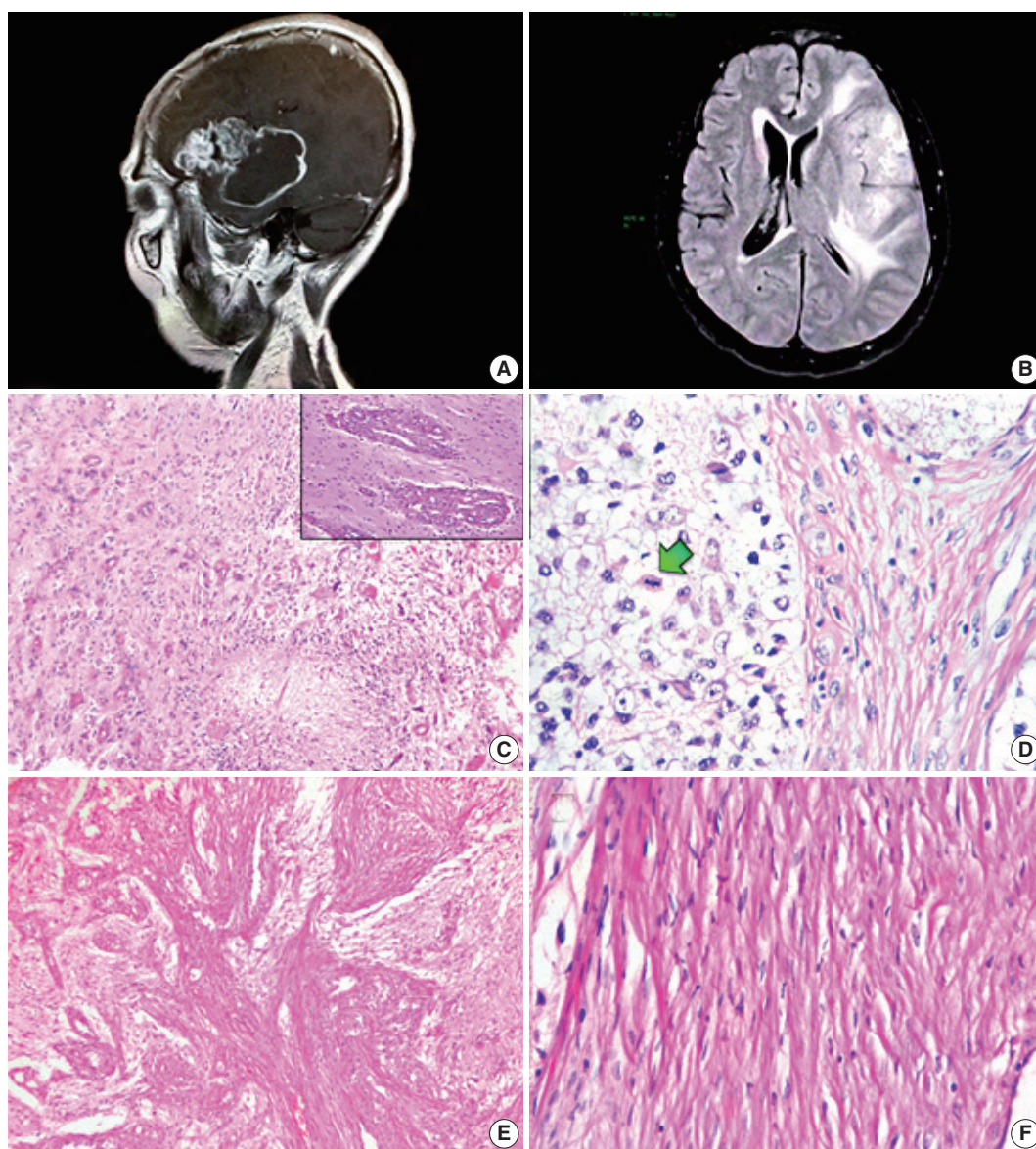


Fig. 1. Magnetic resonance imaging scans and biphasic histological features. (A) Post-contrast, T1-weighted sagittal section. A heterogeneous tumour with an enhancing peripheral rim is shown. (B) Fluid-attenuated inversion recovery sequence. Considerable outlying oedema can be seen. (C) Glioblastomatous component with palisading necrosis and microvascular proliferation (upper right inset). (D) Boundary zone with neoplastic cells of gemistocytic appearance (left) next to apparently atypical spindle cells (right). Mitoses are noticeable exclusively in neoplastic glial cells (arrow). (E) Mesenchymal component with solid fascicular tissue intermingled with loose astrocytic areas. (F) High-magnification photomicrograph of the cytologically bland mesenchymal constituent.

factor receptor in either element.

The lesion was diagnosed as gliofibroma (mixed astrocytic neoplasm with a low-grade mesenchymal constituent), with special note of its poor prognosis based on the degree of anaplasia of the glial component, suggestive of glioblastoma. This note was written prior to the patient's demise.

All procedures performed in this study were in accordance with the ethical standards of the institutional and/or national research

committee and with the 1964 Helsinki Declaration and its later amendments or comparable ethical standards. Informed consent was obtained from the patient's legal guardian, and the anonymity of the patient was preserved.

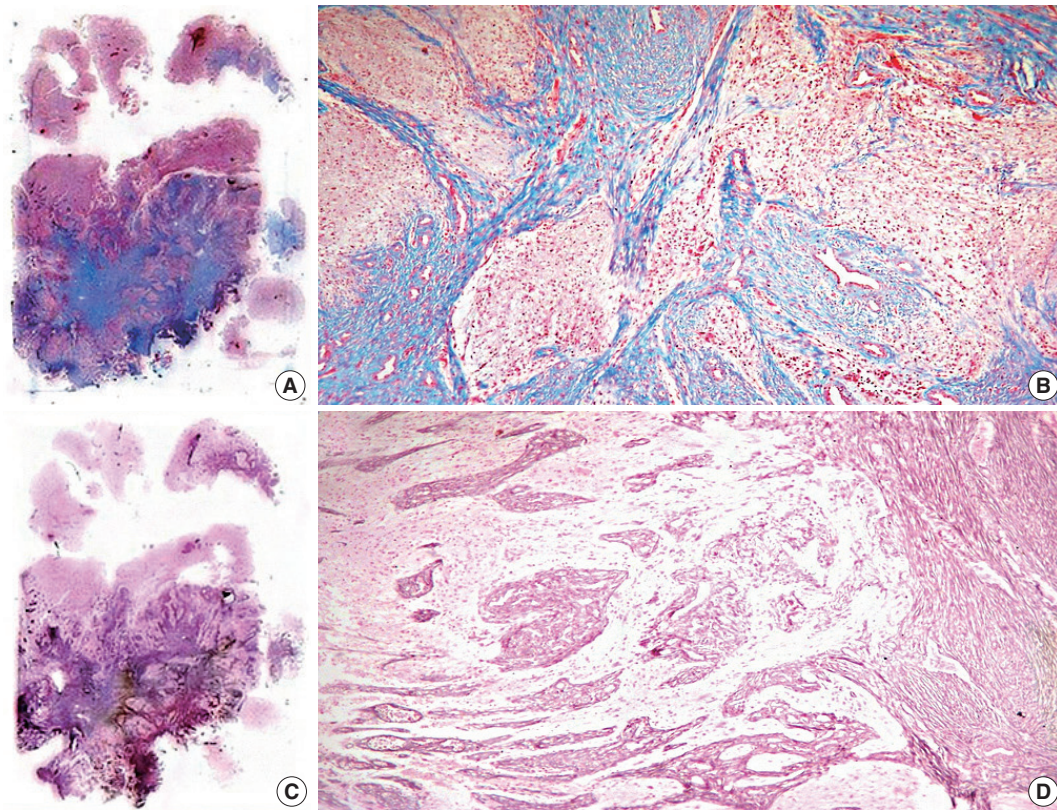


Fig. 2. Histochemical stains of whole-mount sections. (A, B) Collagen-rich tissue seen with Masson's trichrome. (C, D) Reticulin pattern showed with reticular fiber stain.

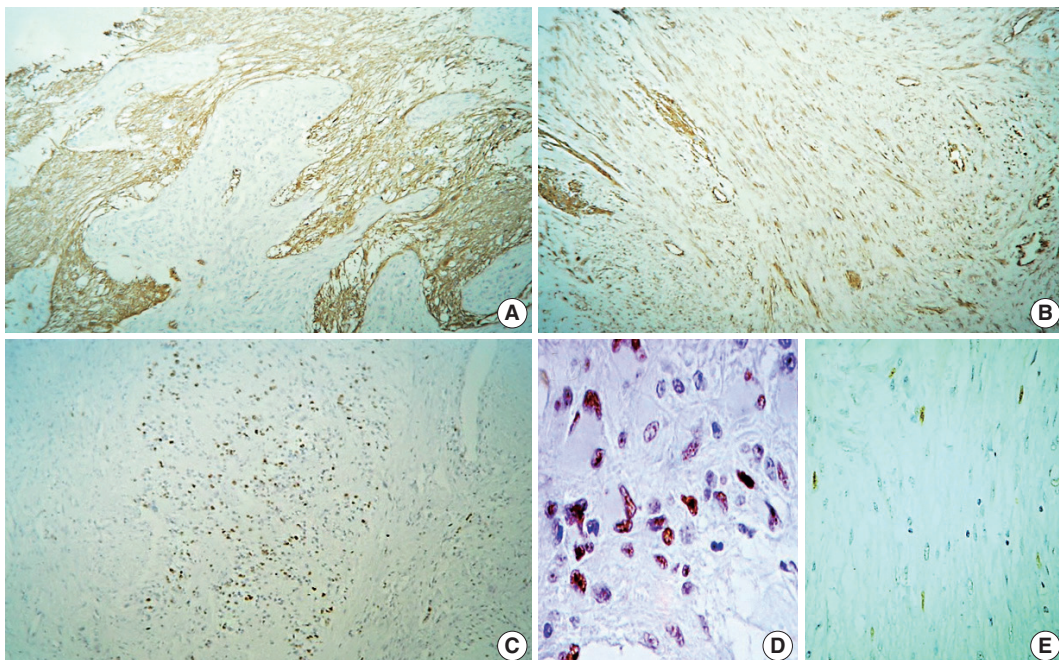


Fig. 3. Immunohistochemistry panel. (A) Glial fibrillary acidic protein. (B) Vimentin. (C) Ki-67. (D) p53 (glial portion) with diffuse immunolabeling. (E) p53 (mesenchymal portion) with very focally positive immunoreactivity.

Table 1. High-grade gliofibroma cases

Case No.	Reference	Age/ Sex	Location	Grade according to the described features of the glial component	Outcome (follow-up)
1	Friede (1978) ¹	3.9 yr/F	Lower medulla oblongata	Dedifferentiation of the glial component	Died (3 mo)
2	Snipes <i>et al.</i> (1991) ⁸	2 mo/F	Right thalamus and floor of the fourth ventricle	Anaplastic astrocytoma, WHO grade III (mitoses up to 5 per 10-HPF)	Died (16 mo)
3	Vazquez <i>et al.</i> (1991) ⁵	11 mo/F	Right temporal lobe	Anaplastic astrocytoma, WHO grade III (pleomorphism and numerous MFs)	Alive (2 yr)
4	Schober <i>et al.</i> (1992) ⁹	18 yr/M	Right frontal lobe	Anaplastic astrocytoma, WHO grade III (foci of pleomorphism, sparse and abnormal MFs)	Alive (7 days)
5	Cerda-Nicolas and Kepes (1993) ¹⁰	4 yr/F	Fourth ventricle, extending to the prepontine cistern and left temporal lobe	Anaplastic astrocytoma, WHO grade III	No data
6	Cerda-Nicolas and Kepes (1993) ¹⁰	9 yr/F	Left parietal lobe	Anaplastic astrocytoma, WHO grade III (pleomorphism and occasional MFs)	Alive (5.5 mo)
7	Caldemeyer <i>et al.</i> (1995) ¹¹	8 yr/M	Right temporal lobe	Anaplastic astrocytoma, WHO grade III (numerous MFs)	No data
8	Sharma <i>et al.</i> (1998) ⁴	54 yr/F	Right parietal lobe	Anaplastic astrocytoma, WHO grade III (pleomorphism, MFs and 10.5% of PI)	Died (6 mo)
9	Kim <i>et al.</i> (2003) ¹²	25 yr/M	Left parietal lobe	Anaplastic astrocytoma, WHO grade III (up to 35.8% of PI)	Alive (2 mo)
10	Gargano <i>et al.</i> (2014) ²	10.7 yr/F	Left fronto-parietal lobe	Anaplastic astrocytoma, WHO grade III (mild to moderate pleomorphism with up to 10% of PI)	Alive (2 yr)
Subtotal (10 cases)				Mortality rate (cases with available data) (5/8) = 62.5%	
11	Bastos Leite <i>et al.</i> (2002) ¹³	47 yr/F	Left parietal lobe	Glioblastoma, WHO grade IV (nuclear atypia, endothelial proliferation, necrosis and mitoses)	Died (1 yr)
12	Present case	50 yr/F	Left parieto-temporal lobe	Glioblastoma, WHO grade IV (microvascular proliferation, palisading necrosis and up to 50% of PI)	Died (1 mo)
Subtotal (2 cases)				Mortality rate (2/2) = 100.0%	
Total (12 cases)				Overall mortality rate (cases with available data) (7/10) = 70.0%	

F, female; WHO, World Health Organization; HPF, high-power fields; M, male; MFs, mitotic figures; PI, proliferation index (MIB-1, Ki-67).

DISCUSSION

The term gliofibroma was first introduced by Friede in 1978¹ to describe an unusual neoplasm featuring astroglial cells within collagen bundles. Since then, nearly 40 cases of gliofibroma have been reported in the worldwide literature, the vast majority occurring in the paediatric population.² Only 11 cases have been recorded in adults, with age ranging from 19 to 54 years.^{3,4} More importantly, some cases described in both, children and adults, bear morphological traits indicative of biologically aggressive lesions (Table 1). The prognostic value of these features in gliofibromas has been widely debated, as some non-lethal tumours have a high-grade glial component while other are recurrent lesions despite their low-grade glial associate.^{5,6} Moreover, as accurately demonstrated by Suarez *et al.*,⁷ the overall mortality for these lesions is approximately 23%. However, when considering the lethality of the high-grade-only subset, this value increases to 70% or even 100% in cases with an accompanying gli-

oblastoma component (Table 1).⁸⁻¹³

In their work, Schober *et al.*⁹ were the first to tentatively assign a World Health Organization (WHO) grade to their diagnosis, while Cerda-Nicolas and Kepes¹⁰ preferred to add a descriptive modifier (anaplastic). In a similar way, Sharma *et al.*⁴ proposed to dichotomize these lesions into low-grade (benign) or high-grade (malignant/anaplastic) based on the Ki-67 proliferation index. In spite of these grading attempts, Snipes *et al.*⁸ seminally pointed out that prognosis seems to be more related to location rather than to any morphological or immunohistochemical feature, though the degree of anaplasia and the mitotic index might be worthy of consideration. On the other hand, the case documented by Altamirano *et al.*¹⁴ highlights the issue of whether atypia can exist in the fibroma portion of the neoplasm. This is exceedingly difficult to assert, as the boundaries of either a gliosarcoma or sarcoglioma are unavoidably blurred. In the aforementioned case, increased immunolabeling for Ki-67 was noted in the nuclei of the mesenchymal part, though it was rated

in less than 5% of the overall tumour. The authors interpreted the mass as a proliferative activity of uncertain relevance. Though our case displays focal nuclear enlargement and vacuolization (Fig. 1D), we did not observe an increment in mesenchymal Ki-67 expression and did not find any areas suggestive of a true sarcomatous component. Nonetheless, this presumed “atypia” might not reliably worsen the prognosis, as in our case it was based on histology (glioblastoma) while in Altamirano’s group was determined by location (thalamus/mesencephalon). p53 immunostaining in our case was also of conjectural significance, indicating not only a possible secondary glioblastoma, but also a common origin of both the glial and mesenchymal elements, similar to the demonstration of Biernat regarding gliosarcomas,¹⁵ and thus possibly representing a true benign mesodermal differentiation as formerly hypothesised by Snipes *et al.*⁸ Furthermore, p53 immunolabeling has been previously tested in nine gliofibroma cases with no positive result.^{2,4,6,12,16-18} Interestingly, Goyal *et al.*¹⁹ also applied this immunohistochemical marker in three other cases but never mentioned the final outcome. This lack of p53 expression is shared by the so-called desmoplastic infantile astrocytoma and may hint, at least in these aforementioned cases, at a different developmental pathway from that of diffuse or anaplastic astrocytomas and glioblastomas.

Three more issues briefly deserve our attention. (1) As previously mentioned, the first report of gliofibroma clearly detailed a desmoplastic astrocytoma (Friede-type gliofibroma);¹ nonetheless, this designation was subsequently applied to similar lesions consisting of both glial and mesenchymal derivatives (authentic glioma/fibroma),¹⁰ as in the present case. It is worth mentioning that the glial constituent can range from innocuous to evidently malignant, while the latter is a consistently benign fusocellular component. (2) In the bimorphic subset, it has not been fully corroborated whether the two populations are distinct cell lineages or if the fusiform cells are glia capable of differentiating into fibroblasts, myofibroblasts, Schwann cells or histiocytes.^{2,20} (3) Recently, some desmoplastic lesions displaying a non-astrocytic glial phenotype with immunohistochemical properties more akin to ependymoma (as in the case described by Gargano *et al.*²) have also been diagnosed as gliofibromas. Thus, as pointed out by Suárez *et al.*,⁷ a controversial dilemma of “splitting versus lumping” currently prevails in the conceptual and classification schemes regarding these kinds of tumours. Nevertheless, it seems to be more of an academic and histopathological predicament rather than one of clinical concern or prognostic relevance.

As shown in our case and previously advised by other authors, gliofibroma prognosis is greatly influenced by the degree of an-

aplasia of the glial component. Hence, we suggest adding a grade (WHO I–IV) or descriptive (low-grade, high-grade, anaplastic, malignant/glioblastomatoid) modifier to the diagnosis of gliofibroma.

It had been previously claimed that necrosis and prominent vascular proliferation are not usual features of gliofibromas.¹⁶ Thus, we document the second case of gliofibroma with a glioblastomatous component¹³ (though this is the first case involving a mixture of glioma and fibroma) as well as the third case occurring in Latin American population.^{2,14}

Conflicts of Interest

No potential conflict of interest relevant to this article was reported.

REFERENCES

1. Friede RL. Gliofibroma: a peculiar neoplasia of collagen forming glia-like cells. *J Neuropathol Exp Neurol* 1978; 37: 300-13.
2. Gargano P, Zuccaro G, Lubieniecki F. Intracranial gliofibroma: a case report and review of the literature. *Case Rep Pathol* 2014; 2014: 165025.
3. Prayson RA. Disseminated spinal cord astrocytoma with features of gliofibroma: a review of the literature. *Clin Neuropathol* 2013; 32: 298-302.
4. Sharma MC, Gaikwad S, Mehta VS, Dhar J, Sarkar C. Gliofibroma: mixed glial and mesenchymal tumour: report of three cases. *Clin Neurol Neurosurg* 1998; 100: 153-9.
5. Vazquez M, Miller DC, Epstein F, Allen JC, Budzilovich GN. Gliofibroma: renaming the pediatric “gliofibroma”: a neoplasm composed of Schwann cells and astrocytes. *Mod Pathol* 1991; 4: 519-23.
6. Deb P, Sarkar C, Garg A, Singh VP, Kale SS, Sharma MC. Intracranial gliofibroma mimicking a meningioma: a case report and review of literature. *Clin Neurol Neurosurg* 2006; 108: 178-86.
7. Suarez CR, Raj AB, Bertolone SJ, Coventry S. Carboplatinum and vincristine chemotherapy for central nervous system gliofibroma: case report and review of the literature. *J Pediatr Hematol Oncol* 2004; 26: 756-60.
8. Snipes GJ, Steinberg GK, Lane B, Horoupian DS. Gliofibroma: case report. *J Neurosurg* 1991; 75: 642-6.
9. Schober R, Bayindir C, Canbolat A, Ulrich H, Wechsler W. Gliofibroma: immunohistochemical analysis. *Acta Neuropathol* 1992; 83: 207-10.
10. Cerda-Nicolas M, Kepes JJ. Gliofibromas (including malignant forms), and gliosarcomas: a comparative study and review of the

- literature. *Acta Neuropathol* 1993; 85: 349-61.
11. Caldemeyer KS, Zimmerman RA, Azzarelli B, Smith RR, Moran CC. Gliofibroma: CT and MRI. *Neuroradiology* 1995; 37: 481-5.
 12. Kim Y, Suh YL, Sung C, Hong SC. Gliofibroma: a case report and review of the literature. *J Korean Med Sci* 2003; 18: 625-9.
 13. Bastos Leite AJ, Palmeira de Sousa C, Honavar M. Malignant gliofibroma (desmoplastic glioblastoma) in an adult: case report. *J Neuroradiol* 2002; 29: 215-8.
 14. Altamirano E, Jones MC, Drut R. Gliofibroma. Comunicación de un caso pediátrico y revisión de la bibliografía. *Patol Rev Latinoam* 2011; 49: 221-5.
 15. Biernat W, Aguzzi A, Sure U, Grant JW, Kleihues P, Hegi ME. Identical mutations of the p53 tumor suppressor gene in the gliomatous and the sarcomatous components of gliosarcomas suggest a common origin from glial cells. *J Neuropathol Exp Neurol* 1995; 54: 651-6.
 16. Prayson RA. Gliofibroma: a distinct entity or a subtype of desmoplastic astrocytoma? *Hum Pathol* 1996; 27: 610-3.
 17. Kim NR, Suh YL, Shin HJ, Park IS. Gliofibroma with extensive calcified deposits. *Clin Neuropathol* 2003; 22: 14-22.
 18. Matsumura A, Takano S, Nagata M, Anno I, Nose T. Cervical intramedullary gliofibroma in a child: a case report and review of the literature. *Pediatr Neurosurg* 2002; 36: 105-10.
 19. Goyal S, Puri T, Gunabushanam G, *et al.* Gliofibroma: a report of three cases and review of literature. *Acta Oncol* 2007; 46: 1202-4.
 20. Erguvan-Onal R, Ateş O, Onal C, Aydin NE, Koçak A. Gliofibroma: an incompletely characterized tumor. *Tumori* 2004; 90: 157-60.