

RESEARCH ARTICLE

Open Access



Luteal blood flow as a predictive factor for methotrexate treatment outcomes in women with unruptured tubal pregnancy

Li Wang, Meili Pei, Ting Yang, Juan Zhao and Xiaofeng Yang*

Abstract

Background: Blood flow in the corpus luteum is associated with luteal function. However, the impact of luteal blood flow on methotrexate (MTX) treatment in women with unruptured tubal pregnancy has not been reported. The aim of the present study was to observe the impact of luteal blood flow on the therapeutic effect of MTX in women with unruptured tubal pregnancy.

Methods: A prospective observational study recruited 129 women with unruptured tubal pregnancy in the First Affiliated Hospital of Xi'an Jiaotong University from September 2016 to June 2018. One hundred and fifteen women were treated successfully with MTX, and women were divided into 2 groups according to luteal blood flow: the poor luteal blood flow group and the abundant luteal blood flow group. The therapeutic effects were compared between the two groups.

Results: Women in the abundant luteal blood flow group had a significantly higher serum β -human chorionic gonadotropin (β -hCG) level 4 days, 1 week and 2 weeks after MTX treatment compared with women in the poor luteal blood flow group ($P < 0.05$). The average diameter of the ectopic mass 1 week, 2 weeks and 3 weeks after MTX treatment in women with abundant luteal blood flow was significantly larger ($P < 0.05$), and the time of serum β -hCG clearance and ectopic mass disappearance were significantly longer compared with those in women in the poor luteal blood flow group ($P < 0.05$).

Conclusions: Luteal blood flow might be a predictive factor for MTX treatment outcomes in women with unruptured tubal pregnancy, and those with abundant luteal blood flow need a longer recovery time.

Keywords: Luteal blood flow, Methotrexate, Unruptured tubal pregnancy, Predictive factor

Background

Ectopic pregnancy (EP) occurs when blastocysts are implanted outside the uterine cavity, and EP may result in severe complications, including rupture of the fallopian tube, hemorrhagic shock, and even death [1, 2]. It has been reported that the incidence of EP represents 1–2% of all pregnancies and is the main reason of death in the first trimester of pregnancy [3]. Fallopian tubes are the most common site

for blastocyst implantation [4]. At present, most EPs can be diagnosed in the early stage because of the improvement and popularization of transvaginal ultrasound (TVUS) [5]. Once a definitive diagnosis of EP has been made, the patient should be monitored closely and treated with surgical, medical or expectant management. The selection of the therapeutic plan depends on the serum human chorionic gonadotropin (hCG) level, size of the ectopic mass and foetal cardiac activity (FCA). Methotrexate (MTX) is widely used as a first-line treatment for women diagnosed with unruptured EP with a low serum hCG concentration, a small

* Correspondence: yxf73@163.com

Department of Gynecology and Obstetrics, The First Affiliated Hospital of Xi'an Jiaotong University, Xi'an, Shaanxi, People's Republic of China



© The Author(s). 2020 **Open Access** This article is licensed under a Creative Commons Attribution 4.0 International License, which permits use, sharing, adaptation, distribution and reproduction in any medium or format, as long as you give appropriate credit to the original author(s) and the source, provide a link to the Creative Commons licence, and indicate if changes were made. The images or other third party material in this article are included in the article's Creative Commons licence, unless indicated otherwise in a credit line to the material. If material is not included in the article's Creative Commons licence and your intended use is not permitted by statutory regulation or exceeds the permitted use, you will need to obtain permission directly from the copyright holder. To view a copy of this licence, visit <http://creativecommons.org/licenses/by/4.0/>. The Creative Commons Public Domain Dedication waiver (<http://creativecommons.org/publicdomain/zero/1.0/>) applies to the data made available in this article, unless otherwise stated in a credit line to the data.

ectopic mass and stable haemodynamics. In appropriately selected women, the success rates of single-dose MTX for tubal EP treatment ranged from 65 to 95%, and 3 to 27% of the patients needed a second dose [6].

The blood flow in the corpus luteum can be detected by transvaginal colour-pulsed Doppler ultrasonography. The luteal blood flow increases gradually after ovulation, and the corpus luteum is filled with blood [7]. Previous studies have found that insufficiency of the corpus luteum during pregnancy was associated with infertility and spontaneous abortion in the first trimester of pregnancy [8, 9]. In addition, blood flow in the corpus luteum is closely related to luteal function. Some drug treatments could improve corpus luteum function by increasing its blood supply [10]. However, to the best of our knowledge, the impact of luteal blood flow on MTX treatment in women with unruptured tubal pregnancy has not been reported. Our research aims to observe the impact of luteal blood flow on MTX treatment outcomes in women with unruptured tubal pregnancy.

Methods

Study design and participants

A total of 129 women with unruptured tubal pregnancy in the First Affiliated Hospital of Xi'an Jiaotong University from September 2016 to June 2018 were recruited for this prospective observational study. The women had a median age of 32.8 years with an age range of 21–39 years. The diagnosis of tubal EP was based on the serum β -hCG level, lack of intrauterine gestational sac and existence of an ectopic mass on the side of the ovary, which was checked with TVUS. All participants provided written informed consent according to procedures approved by the Ethics Committee of The First Affiliated Hospital of Medical College of Xi'an Jiaotong University.

The inclusion criteria included women who were diagnosed with tubal EP and had a β -hCG level lower than 3000 mIU/mL before treatment without FCA and an ectopic

pregnancy size < 4 cm. The exclusion criteria included EP at other locations and contraindications for MTX treatment, including renal and hepatic disease, active pulmonary disease, immunodeficiency and peptic ulcer [11]. Demographic data such as age, body mass index (BMI), number of pregnancies and deliveries, pregnancy method, risk factors for EP, duration of pregnancy, and clinical symptoms such as abdominal pain and vaginal bleeding were recorded. The serum β -hCG and progesterone concentrations were detected in our hospital laboratory by chemiluminescence methods. Women were checked by TVUS before treatment, and findings such as the size of the ectopic mass, yolk sac and free fluid in the Douglas cavity were recorded.

All ultrasound scans were performed using a Voluson E8 (GE Medical Systems, USA) ultrasound system with a vaginal probe frequency of 4–9 MHz. Blood flow was identified in the peripheral area of the corpus luteum, and women were divided into 2 groups according to the corpus luteal blood flow patterns: the poor luteal blood flow group and the abundant luteal blood flow group (Fig. 1).

Three-dimensional power Doppler ultrasound is generally superior to colour Doppler imaging for detecting low-velocity flows and visualizing small vessels. To further detect the index of the luteal blood flow, the ultrasound instrument was switched to 3D mode with power Doppler. The vascularization indices were determined using the VOCAL (virtual organ computer-aided analysis) imaging program to measure the volume, vascularization index (VI), flow index (FI), and vascularization flow index (VFI) of the corpus luteum before treatment.

Outcome measures

All women received intramuscular MTX at a dose of 50 mg/m² of body-surface area [12]. The side effects of MTX were assessed and recorded. According to the protocol, the serum β -hCG level was measured 4 days after MTX treatment, and then serum β -hCG measurements were

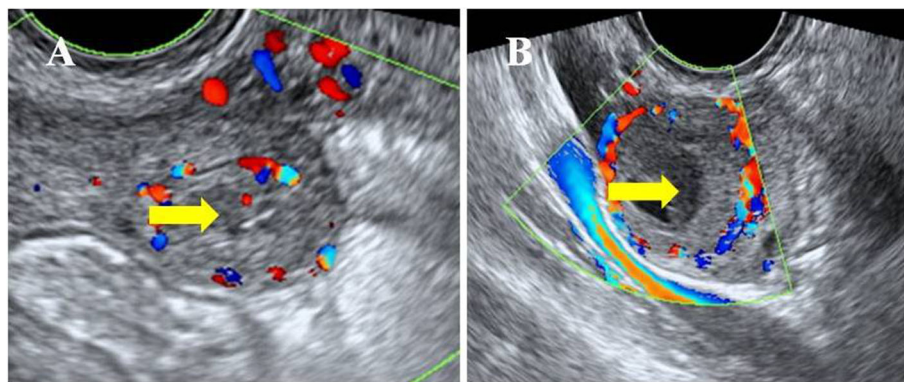


Fig. 1 Luteal blood flow verified by TVUS. The arrow indicates the corpus luteum. **a** Poor blood flow: linear or stellate blood flow around the corpus luteum. **b** Abundant blood flow: hemicycle or annular blood flow around the corpus luteum

performed weekly after MTX treatment until β -hCG was no longer detectable. In addition, the size of the ectopic mass was monitored through TVUS weekly after treatment until it disappeared. If the β -hCG level failed to decline by at least 15% between days 4 and 7, then a second dose of MTX was given [6]. Whenever haemodynamic instability and/or clinical symptoms of tubal rupture (i.e., increased abdominal pain in combination with a decline in the haemoglobin level and signs of pelvic haemorrhage) occurred, surgical intervention was performed.

The primary outcome was the decline in serum β -hCG to an undetectable level. Secondary outcomes included the serum β -hCG clearance time, reduction and clearance time of the ectopic mass, and the side effects of MTX treatment (i.e., nausea, vomiting, diarrhoea, and elevation of the transaminase level).

Statistical analysis

The success rates of MTX for tubal ectopic pregnancy ranged from 60 to 90% according to previous studies [6]. To achieve 80% power with a 2-sided alpha of 0.05, we needed to recruit 116 women in the study. Considering a loss to follow-up of 5–10%, we set an overall recruitment goal of 129 women. Statistical analyses were performed using SPSS version 20.0 (IBM, Armonk, NY, USA). The Kolmogorov–Smirnov test was used to check for normal distribution prior to statistical tests. Normally

distributed continuous variables were represented as mean \pm standard deviation, and skewed data were represented as median (25, 75% quartile range). The non-parametric Mann–Whitney *U* test was used to analyze the continuous variables. Differences in dichotomous outcomes between the two groups were represented as number and percentage (%), which were compared by chi-square test or Fisher’s exact test when the expected frequencies fell below five. *P* < 0.05 was considered statistically significant.

Results

A total of 129 women were assessed for MTX treatment, and of these, we excluded 3 women who underwent surgical intervention, 5 women who underwent expectant management, 2 women who were lost to follow-up, and 4 women who declined to participate. Finally, 115 women were included in the study, and these women were divided into 2 groups according to the luteal blood flow. Fifty-six women were successfully treated with MTX in the poor luteal blood flow group, and 59 women were successfully treated with MTX in the abundant luteal blood flow group (Fig. 2).

Table 1 illustrates the baseline characteristics of the women in the two groups. No significant difference was found when comparing maternal age, BMI, number of pregnancies and deliveries, pregnancy method, risk

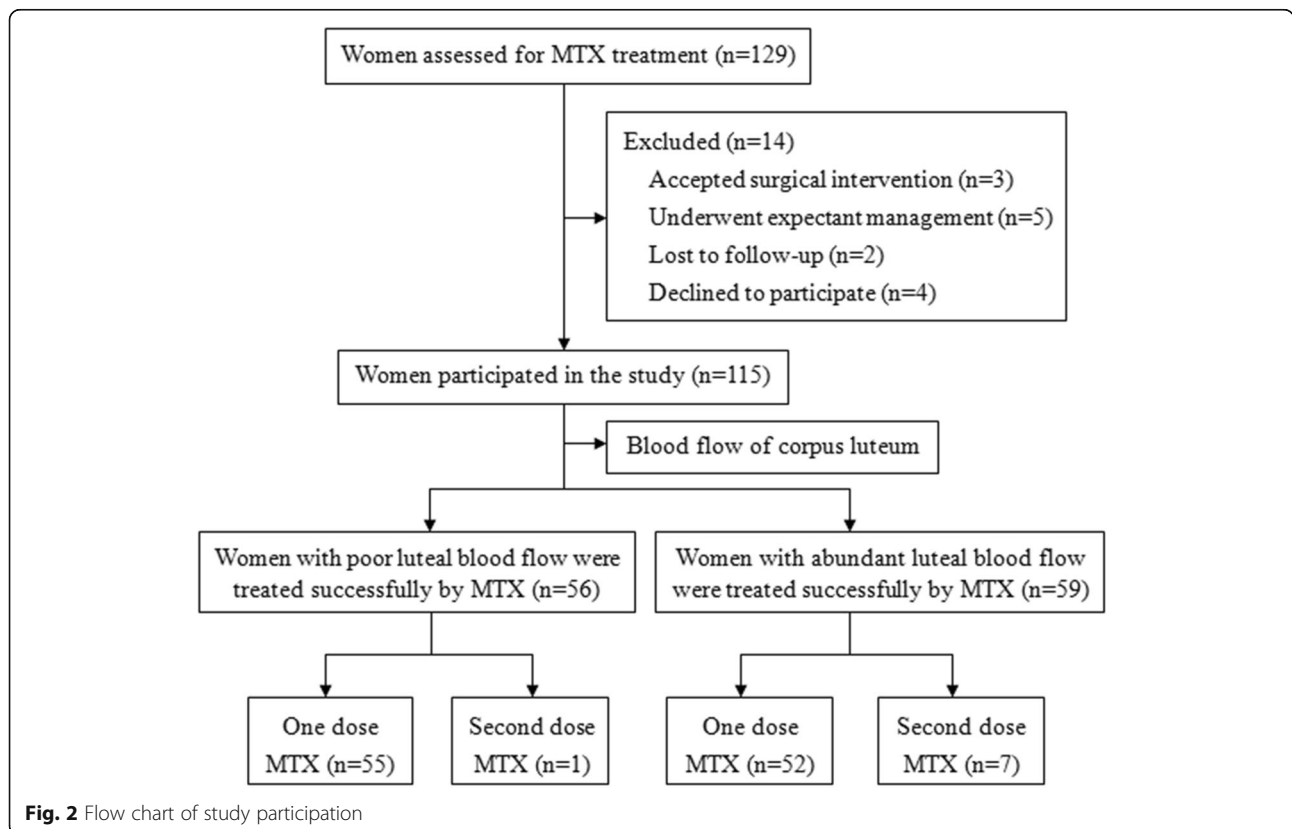


Fig. 2 Flow chart of study participation

Table 1 Baseline characteristics of women in the two groups

Characteristics	Poor blood flow group (n = 56)	Abundant blood flow group (n = 59)	P-value ^a
Maternal age (years)	32.4 ± 7.9	33.1 ± 9.3	0.413
BMI (kg/m ²)	22.5 ± 4.9	23.2 ± 5.0	0.769
Number of pregnancies	2.2 ± 0.8	2.2 ± 0.7	0.802
Number of deliveries	1.0 ± 0.4	0.9 ± 0.5	0.613
Pregnancy method			0.866
Natural conception	49 (87.5)	51 (86.4)	
ART	7 (12.5)	8 (13.6)	
Risk factors of EP			
Previous EP	3 (5.4)	5 (8.5)	0.511
Pregnant with IUD	4 (7.1)	3 (5.1)	0.645
Duration of pregnancy (days)	46.6 ± 7.1	48.3 ± 8.2	0.598
Clinical symptoms			
Abdominal pain	47 (83.9)	48 (81.4)	0.716
Vaginal bleeding	51 (91.1)	54 (91.5)	0.931
Pretreatment β-hCG (mIU/mL)	1365.6(769.2–2824.5)	1403.2(813.1–2902.5)	0.497
Pretreatment progesterone (nmol/L)	26.7(15.8–46.9)	42.3(23.7–71.5)	0.041
Ultrasound findings			
Average diameter of ectopic mass (cm)	2.1(1.3–3.2)	2.3(1.6–3.5)	0.764
Yolk sac	11 (19.6)	14 (23.7)	0.928
Free fluid in Douglas cavity	44 (78.6)	46 (78.0)	0.937

Values are presented as mean ± SD, median (quartile range) or number (percentage)

BMI Body mass index, ART Assisted reproductive technology, EP Ectopic pregnancy, IUD Intrauterine device

^a Mann-Whitney U test, Chi-square test or Fisher's exact test

factors of ectopic pregnancy, duration of pregnancy, clinical symptoms, serum β-hCG level before treatment, or ultrasound findings ($P > 0.05$). However, the serum progesterone level before treatment was significantly higher in women with abundant luteal blood flow than in those with poor luteal blood flow ($P = 0.041$).

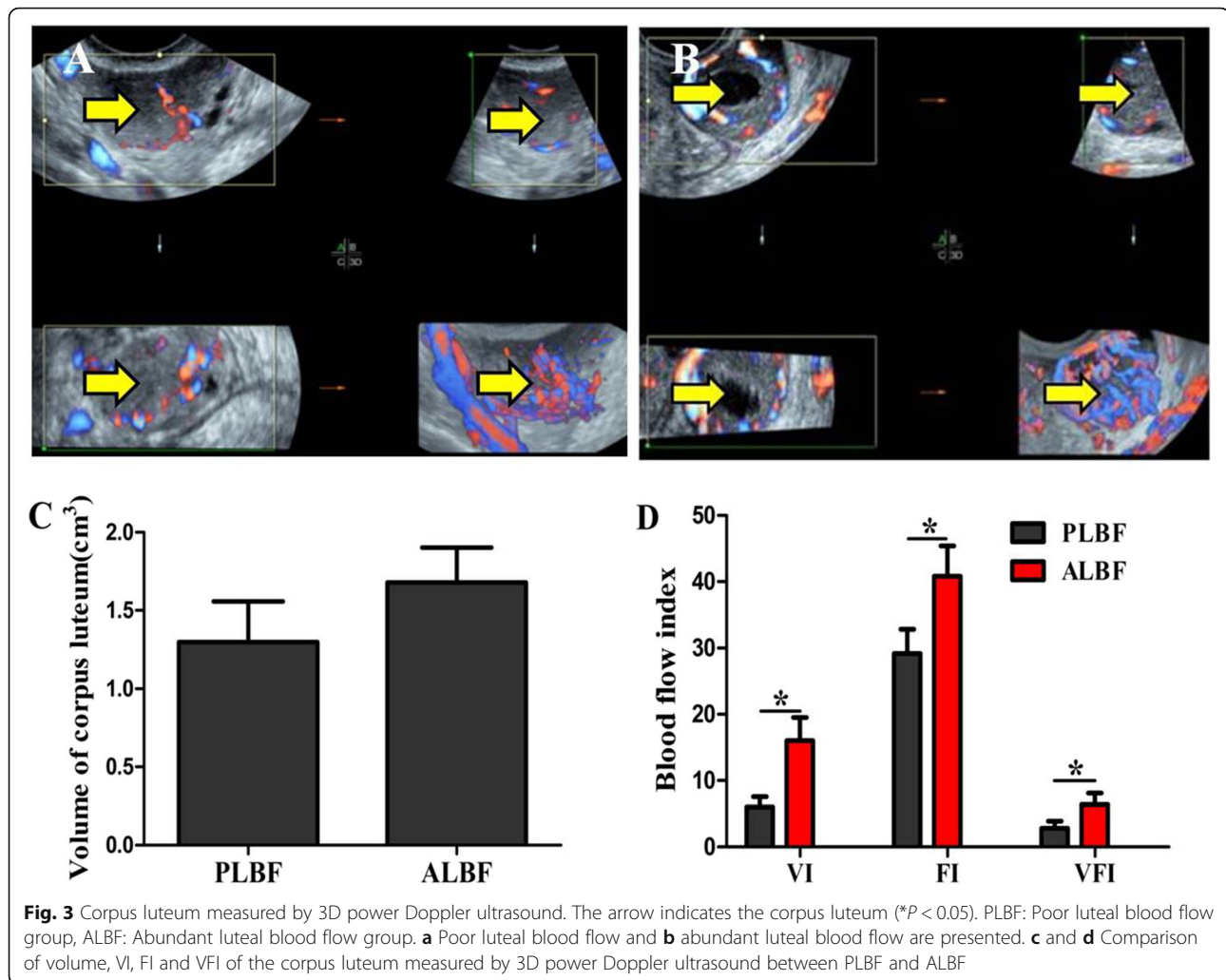
No significant difference was found when comparing the volume of the corpus luteum ($P = 0.058$); however, the VI ($P = 0.019$), FI ($P = 0.042$) and VFI ($P = 0.031$) of the corpus luteum were significantly higher in women with abundant luteal blood flow than in women with poor luteal blood flow (Fig. 3).

The serum β-hCG level 4 days, 1 week and 2 weeks after MTX treatment in women with abundant luteal blood flow were significantly higher than those in women in the poor luteal blood flow group ($P < 0.05$). Moreover, the time of serum β-hCG clearance in women with abundant luteal blood flow was significantly longer ($P = 0.029$). The average diameter of the ectopic mass 1 week, 2 weeks and 3 weeks after MTX treatment in women with abundant luteal blood flow was significantly larger ($P < 0.05$), and the time required for ectopic mass disappearance was significantly longer ($P = 0.043$) compared with that in women in the poor luteal blood flow group (Fig. 4).

In women with poor luteal blood flow, 55 women (98.2%) received one dose of MTX treatment, and 1 woman (1.8%) received a second dose of MTX treatment because her serum β-hCG level did not decline by 15% between days 4 and 7. However, in women with abundant luteal blood flow, 52 women (88.1%) received one dose of MTX treatment, and 7 women (11.9%) received a second dose of MTX treatment. There was a significant difference in the dose of MTX used in the two groups ($P = 0.034$). Eight women with poor luteal blood flow reported side effects versus 11 in the abundant luteal blood flow group, and the laboratory results showed a minor rise in alanine aminotransferase (ALT) and aspartate transaminase (AST) levels, which ranged from 45 to 64 U/L. These side effects were mild and disappeared within 2 weeks after MTX treatment. No significant difference was found when comparing the side effects of MTX between the two groups ($P = 0.529$) (Table 2).

Discussion

Since the first application by Tanaka et al. [13], MTX has become the primary treatment for unruptured EP [14]. The successful treatment of EP depends on several factors, including the serum hCG level, route of MTX administration, size of the ectopic mass and FCA [15–17]. However,



the effect of luteal blood flow during pregnancy on MTX treatment in women with EP has not been previously reported. Transvaginal colour Doppler ultrasound is a useful and noninvasive technique for the detection of blood flow around the corpus luteum [18]. Previous studies reported that luteal blood flow was associated with luteal vascularization and luteal function [19, 20], which is essential for the support of early pregnancy. Therefore, we speculate that the blood supply of the corpus luteum may be related to the treatment outcomes of unruptured tubal pregnancy.

The present study observed 115 women with unruptured tubal pregnancy who were treated successfully with MTX. Women in the study were divided into 2 groups according to their luteal blood flow. Our data revealed that women with abundant luteal blood flow had a significantly higher serum β -hCG level 4 days, 1 week and 2 weeks after MTX treatment compared with women with poor luteal blood flow. Moreover, the average diameter of the ectopic mass 1 week, 2 weeks and 3 weeks after MTX treatment in women with abundant luteal blood flow was significantly larger, and the time required for

serum β -hCG clearance and ectopic mass disappearance were significantly longer in comparison with that in women with poor luteal blood flow. These findings illustrated that luteal blood flow impacted the therapeutic outcomes in women with unruptured tubal pregnancy, and those with abundant luteal blood flow needed a second dose of MTX treatment and a longer recovery time.

Previous studies confirmed that the crucial role of angiogenesis in corpus luteum is maintenance of luteal function [21]. Ovulation is triggered through a peak of luteinizing hormone (LH) in blood, which is secreted and released by hypothalamus. The pressure in the follicular cavity decreases after ovulation, and the avascular granulosa cell layer is invaded by the vascular endothelial cells of the theca cell layer, and then the blood flow in the corpus luteum increase rapidly [22]. In fact, vascularization and abundant blood flow in the corpus luteum are important for the development of the corpus luteum and progesterone secretion, which play an important role in the improvement of endometrial receptivity, embryo implantation and successful pregnancy.

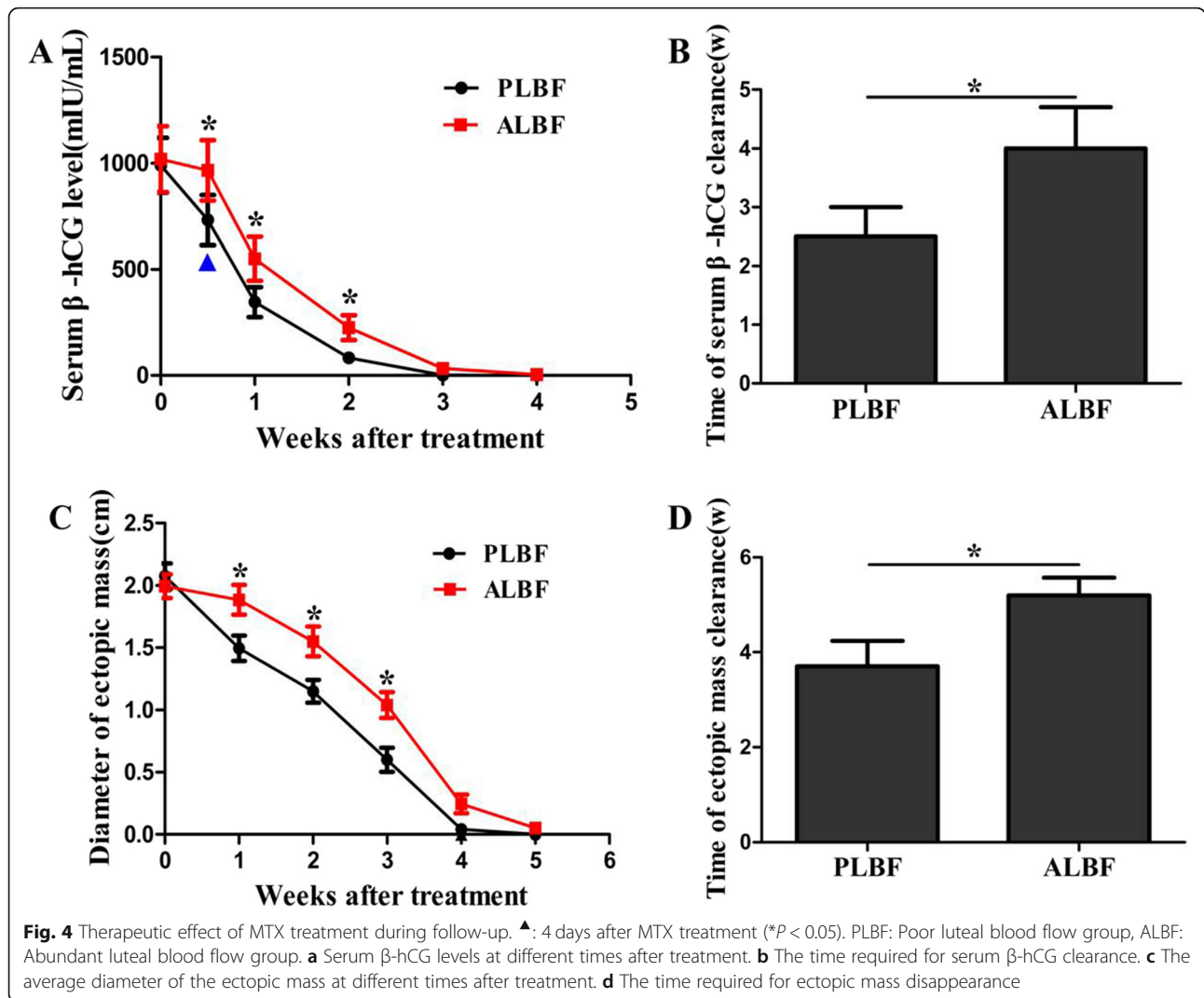


Table 2 Dose and side effects of MTX treatment

Variable	Poor blood flow group (n = 56)	Abundant blood flow group (n = 59)	P-value ^a
Success rate of MTX treatment			0.034
One dose	55 (98.2)	52 (88.1)	
Second dose ^b	1 (1.8)	7 (11.9)	
Side effects of MTX	8 (14.3)	11 (18.6)	0.529
Clinical symptoms			
Nausea	3 (5.4)	5 (8.5)	
Diarrhoea	2 (3.6)	2 (3.4)	
Laboratory results			
Rise of ALT	2 (3.6)	3 (5.1)	
Rise of AST	1 (1.8)	1 (1.7)	

Values are presented as number (percentage)

ALT alanine aminotransferase, AST aspartate transaminase

^aChi-square test or Fisher's exact test

^bSecond dose was given if serum β-hCG level did not decline 15% between days 4 and 7

Blood vessels are maintained in the corpus luteum until 10 weeks of gestation. The function of the corpus luteum is mainly used for the secretion of progesterone and its release into the blood. Previous studies displayed that the removal of the corpus luteum in the first trimester of pregnancy leads to a decline in blood progesterone level, which further causes miscarriages [21]. Multiple studies have confirmed that the blood supply of the corpus luteum is correlated with the serum progesterone level, and the blood supply of the corpus luteum is decreased in women with luteal phase defects compared with that in women with normal luteal function [10, 18, 20]. Progesterone maintains embryonic development during pregnancy in a variety of ways, such as by increasing the excitatory threshold of uterine smooth muscle, inhibiting uterine contraction, participating in the maintenance of the maternal-foetal microenvironment, and promoting maternal-foetal tolerance [23–26]. The data in our study demonstrated that the serum progesterone level before treatment and the VI, FI and VFI of the corpus luteum were significantly higher in women with abundant luteal blood flow than those in women in the poor luteal blood flow group. These findings indicated that luteal blood flow was an important factor in regulating progesterone levels and affected luteal function and pregnancy outcomes. Low blood supply to the corpus luteum was associated with luteal function defects, which is consistent with previous reports [20].

This study has some limitations. Corpus luteum function is affected by factors other than the corpus luteal blood flow according to this study design. In addition, if an ectopic pregnancy had already been aborted due to falling β -hCG levels, this may not have had any effect on intervention with MTX. Therefore, the repeatability of the results of this study needs to be confirmed after excluding other factors that affect luteal function and therapeutic effect.

Conclusions

In conclusion, the present study showed the impact of luteal blood flow during pregnancy on MTX treatment in women with unruptured tubal pregnancy. Those with abundant luteal blood flow needed a second dose of MTX treatment and a longer recovery time. The blood supply of the corpus luteum may be an important clinical factor for assessing the prognosis of women with EP.

Abbreviations

EP: Ectopic pregnancy; TVUS: Transvaginal ultrasound; hCG: Human chorionic gonadotropin; FCA: Fetal cardiac activity; MTX: Methotrexate; VI: Vascularization index; FI: Flow index; VFI: Vascularization flow index; BMI: Body mass index; ART: Assisted reproductive technology; IUD: Intrauterine device; PLBF: Poor luteal blood flow group; ALBF: Abundant luteal blood flow; ALT: Alanine aminotransferase; AST: Aspartate transaminase

Acknowledgements

We would like to thank all the women who participated in this study.

Authors' contributions

LW, XFY conceived the study; JZ, TY collated data; MLP analyzed data. All authors have been involved in revising the manuscript critically, and they have given final approval of the version to be published.

Funding

This study was supported by the Clinical Research Project of the First Affiliated Hospital of Xi'an Jiaotong University, China (No.XJTU1AF-CRF-2016-T-14); Health Research Project of Shaanxi Province (No.2018D054); Basic research program of natural science of Shaanxi province (No. 2019JM-569). The funding bodies were not involved in the design of the study, data collection, analysis, interpretation, or writing of the manuscript.

Availability of data and materials

The datasets used and/or analyzed during the current study are available from the corresponding authors on reasonable request.

Ethics approval and consent to participate

This study was approved by the Ethics Committee of The First Affiliated Hospital of Medical College of Xi'an Jiaotong University (No: XJTU1AF2017LSK-2016-218). All participants were gave written informed consent.

Consent for publication

Not applicable.

Competing interests

The authors declare that they have no competing interests.

Received: 21 October 2019 Accepted: 18 March 2020

Published online: 30 March 2020

References

- Farquhar CM. Ectopic pregnancy. *Lancet*. 2005;366(9485):583–91.
- Marion LL, Meeks GR. Ectopic pregnancy: history, incidence, epidemiology, and risk factors. *Clin Obstet Gynecol*. 2012;55(2):376–86.
- Barnhart KT. Ectopic pregnancy. *N Engl J Med*. 2009;361(4):379–87.
- Bouyer J, Coste J, Fernandez H, Pouly JL, Job-Spira N. Sites of ectopic pregnancy: a 10 year population-based study of 1800 cases. *Hum Reprod*. 2002;17(12):3224–30.
- Knez J, Day A, Jurkovic D. Ultrasound imaging in the management of bleeding and pain in early pregnancy. *Best Pract Res Clin Obstet Gynaecol*. 2014;28(5):621–36.
- Kirk E, Condous G, Bourne T. The non-surgical management of ectopic pregnancy. *Ultrasound Obstet Gynecol*. 2006;27(1):91–100.
- Sugino N, Matsuoka A, Taniguchi K, Tamura H. Angiogenesis in the human corpus luteum. *Reprod Med Biol*. 2008;7(2):91–103.
- Hussain M, El-Hakim S, Cahill DJ. Progesterone supplementation in women with otherwise unexplained recurrent miscarriages. *J Hum Reprod Sci*. 2012;5(3):248–51.
- Abdelazim IA, Belal MM, Makhlof HH. Relation between single serum progesterone assay and viability of the first trimester pregnancy. *J Turk Ger Gynecol Assoc*. 2013;14(2):68–71.
- Takasaki A, Tamura H, Taniguchi K, Asada H, Taketani T, Matsuoka A, et al. Luteal blood flow and luteal function. *J Ovarian Res*. 2009;2(1):1–6.
- Committee on Practice Bulletins—Gynecology. ACOG Practice Bulletin No. 191 summary: tubal ectopic pregnancy. *Obstet Gynecol*. 2018;131(2):409–11.
- Marret H, Fauconnier A, Dubernard G, Misme H, Lagarce L, Lesavre M, et al. Overview and guidelines of off-label use of methotrexate in ectopic pregnancy: report by CNGOF. *Eur J Obstet Gynecol Reprod Biol*. 2016;205(3):105–9.
- Tanaka T, Hayashi H, Kutsuzawa T, Fujimoto S, Ichinoe K. Treatment of interstitial ectopic pregnancy with methotrexate: report of a successful case. *Fertil Steril*. 1982;37(6):851–2.
- Yang C, Cai J, Geng YH, Gao Y. Multiple-dose and double-dose versus single-dose administration of methotrexate for the treatment of ectopic pregnancy: a systematic review and meta-analysis. *Reprod BioMed Online*. 2017;34(4):383–91.
- Mashiach R, Kislev I, Gilboa D, Mazaki-Tovi S, Seidman DS, Goldenberg M, et al. Significant increase in serum hCG levels following methotrexate therapy is associated with lower treatment success rates in ectopic pregnancy patients. *Eur J Obstet Gynecol Reprod Biol*. 2018;231(26):188–91.

16. Nazac A, Gervaise A, Bouyer J, De Tayrac R, Capella-Allouc S, Fernandez H. Predictors of success in methotrexate treatment of women with unruptured tubal pregnancies. *Ultrasound Obstet Gynecol.* 2003;21(2):181–5.
17. Krissi H, Peled Y, Eitan R, Bishara A, Goldchmit C, Ben-Haroush A. Single-dose methotrexate injection for treatment of ectopic pregnancy in women with relatively low levels of human chorionic gonadotropin. *Int J Gynaecol Obstet.* 2013;121(2):141–3.
18. Ottander U, Solensten NG, Bergh A, Olofsson JI. Intraovarian blood flow measured with color Doppler ultrasonography inversely correlates with vascular density in the human corpus luteum of the menstrual cycle. *Fertil Steril.* 2004;81(1):154–9.
19. Lüttgenau J, Bollwein H. Evaluation of bovine luteal blood flow by using color Doppler ultrasonography. *Reprod Biol.* 2014;14(2):103–9.
20. Tamura H, Takasaki A, Taniguchi K, Matsuoka A, Shimamura K, Sugino N. Changes in blood-flow impedance of the human corpus luteum throughout the luteal phase and during early pregnancy. *Fertil Steril.* 2008; 90(6):2334–9.
21. Sugino N, Suzuki T, Sakata A, Miwa I, Asada H, Taketani T, et al. Angiogenesis in the human corpus luteum: changes in expression of angiopoietins in the corpus luteum throughout the menstrual cycle and in early pregnancy. *J Clin Endocrinol Metab.* 2005;90(11):6141–8.
22. Hazzard TM, Stouffer RL. Angiogenesis in ovarian follicular and luteal development. *Baillieres Best Pract Res Clin Obstet Gynaecol.* 2000;14(6):883–900.
23. Arck P, Hansen PJ, Mulac Jericevic B, Piccinni MP, Szekeres-Bartho J. Progesterone during pregnancy: endocrine-immune cross talk in mammalian species and the role of stress. *Am J Reprod Immunol.* 2007; 58(3):268–79.
24. Di Renzo GC, Giardina I, Clerici G, Mattei A, Alajmi AH, Gerli S. The role of progesterone in maternal and fetal medicine. *Gynecol Endocrinol.* 2012; 28(11):925–32.
25. Szekeres-Bartho J. Progesterone-mediated immunomodulation in pregnancy: its relevance to leukocyte immunotherapy of recurrent miscarriage. *Immunotherapy.* 2009;1(5):873–82.
26. Raghupathy R, Al-Mutawa E, Al-Azemi M, Makhseed M, Azizieh F, Szekeres-Bartho J. Progesterone-induced blocking factor (PIBF) modulates cytokine production by lymphocytes from women with recurrent miscarriage or preterm delivery. *J Reprod Immunol.* 2009;80(1–2):91–9.

Publisher's Note

Springer Nature remains neutral with regard to jurisdictional claims in published maps and institutional affiliations.

Ready to submit your research? Choose BMC and benefit from:

- fast, convenient online submission
- thorough peer review by experienced researchers in your field
- rapid publication on acceptance
- support for research data, including large and complex data types
- gold Open Access which fosters wider collaboration and increased citations
- maximum visibility for your research: over 100M website views per year

At BMC, research is always in progress.

Learn more biomedcentral.com/submissions

