



Rapid and Selective Absorption of Plant Defense Compounds From the Gut of a Sequestering Insect

Zhi-Ling Yang^{1††}, Fabian Seitz^{1†}, Veit Grabe², Sandor Nietzsche³, Adrian Richter⁴, Michael Reichelt⁵, Rolf Beutel⁴ and Franziska Beran^{1*}

OPEN ACCESS

Edited by:

Chaoyang Zhao,
University of California,
United States

Reviewed by:

Wen Xie,
Institute of Vegetables and Flowers,
Chinese Academy of Agricultural
Sciences (CAS), China
Qi Su,
Yangtze University, China

*Correspondence:

Franziska Beran
fberan@ice.mpg.de

†Present address:

Zhi-Ling Yang,
Key Laboratory of Tropical Forest
Ecology, Xishuangbanna Tropical
Botanical Garden, Chinese Academy
of Sciences, Mengla, China

†These authors have contributed
equally to this work

Specialty section:

This article was submitted to
Invertebrate Physiology,
a section of the journal
Frontiers in Physiology

Received: 31 December 2021

Accepted: 31 January 2022

Published: 03 March 2022

Citation:

Yang Z-L, Seitz F, Grabe V,
Nietzsche S, Richter A, Reichelt M,
Beutel R and Beran F (2022) Rapid
and Selective Absorption of Plant
Defense Compounds From the Gut
of a Sequestering Insect.
Front. Physiol. 13:846732.
doi: 10.3389/fphys.2022.846732

¹Research Group Sequestration and Detoxification in Insects, Department of Insect Symbiosis, Max Planck Institute for Chemical Ecology, Jena, Germany, ²Department of Evolutionary Neuroethology, Max Planck Institute for Chemical Ecology, Jena, Germany, ³Elektronenmikroskopisches Zentrum, Universitätsklinikum Jena, Jena, Germany, ⁴Institut für Zoologie und Evolutionsforschung, Friedrich-Schiller-Universität Jena, Jena, Germany, ⁵Department of Biochemistry, Max Planck Institute for Chemical Ecology, Jena, Germany

Many herbivorous insects exploit defense compounds produced by their host plants for protection against predators. Ingested plant defense compounds are absorbed *via* the gut epithelium and stored in the body, a physiological process that is currently not well understood. Here, we investigated the absorption of plant defense compounds from the gut in the horseradish flea beetle, *Phyllotreta armoraciae*, a specialist herbivore known to selectively sequester glucosinolates from its brassicaceous host plants. Feeding experiments using a mixture of glucosinolates and other glucosides not found in the host plants showed a rapid and selective uptake of glucosinolates in adult beetles. In addition, we provide evidence that this uptake mainly takes place in the foregut, whereas the endodermal midgut is the normal region of absorption. Absorption *via* the foregut epithelium is surprising as the apical membrane is covered by a chitinous intima. However, we could show that this cuticular layer differs in its structure and overall thickness between *P. armoraciae* and a non-sequestering leaf beetle. In *P. armoraciae*, we observed a thinner cuticle with a less dense chitinous matrix, which might facilitate glucosinolate absorption. Our results show that a selective and rapid uptake of glucosinolates from the anterior region of the gut contributes to the selective sequestration of glucosinolates in *P. armoraciae*.

Keywords: adaptation, cuticle, foregut, glucosinolate, plant defense, sequestration

INTRODUCTION

Herbivorous insects evolved diverse strategies to cope with defense compounds present in their host plants (Pentzold et al., 2014; Heidel-Fischer and Vogel, 2015; Rashid War et al., 2018). While some insects metabolize and excrete ingested plant defense compounds, others accumulate them in their body and thereby protect themselves against generalist natural enemies (Opitz and Müller, 2009; Heckel, 2014; Petschenka and Agrawal, 2016). The latter strategy, known as sequestration, requires physiological adaptations that enable the transport of ingested defense compounds from the gut to storage sites in the body cavity (Duffey, 1980; Kuhn

et al., 2004; Petschenka and Agrawal, 2016). However, the transport mechanisms for plant defense compounds in sequestering insects are not well understood (Erb and Robert, 2016; Petschenka and Agrawal, 2016).

The gut epithelium is the major selective barrier between the environment and the hemocoel, controlling which compounds can enter the body and which cannot (Huang et al., 2015; Denecke et al., 2018). The permeability of the gut epithelium toward plant defense compounds can thus be expected to differ between sequestering and non-sequestering insect species (Duffey, 1980). Such differences were observed for the toxic cardiac glycoside ouabain, which can be absorbed across the gut of the sequestering milkweed bug *Oncopeltus fasciatus*, but not in the case of two non-sequestering insect species (Scudder and Meredith, 1982). Why some insects can absorb cardiac glycosides while others cannot is unknown. The membrane lipid composition has been proposed to play a role as cardiac glycosides are presumably passively absorbed across the gut (Scudder and Meredith, 1982). Another way to prevent the passive absorption of less polar defense compounds, such as ouabain, is their active excretion from gut epithelial cells by efflux carriers (Agrawal et al., 2012).

Transport mechanisms for polar plant defense compounds that cannot passively diffuse across membranes have been investigated in the leaf beetle subfamily Chrysomelinae. Some of the species rely on their food plant to obtain defense compounds, while others synthesize defense compounds *de novo*. Physiological assays demonstrated that the gut epithelium of sequestering and non-sequestering beetle species is similarly permeable for compounds resembling both plant-derived and endogenously produced defense compounds. This showed that the absorption of compounds across the gut epithelium is not highly selective (Discher et al., 2009). After initial absorption or *de novo* synthesis, chrysomeline larvae selectively accumulate defense compounds in exocrine glands (Kuhn et al., 2004; Discher et al., 2009). Molecular studies indicate a selective import of defense compounds into these glands that is presumably mediated by sugar transporters (Strauss et al., 2013; Schmidt et al., 2019).

The horseradish flea beetle, *Phyllotreta armoraciae*, selectively sequesters glucosinolates, the characteristic defense compounds of its brassicaceous host plants (Yang et al., 2020). In plants, glucosinolates form a two-component defense against non-adapted herbivores and pathogens together with plant β -thioglucosidase enzymes (myrosinases; Hopkins et al., 2009; Jeschke et al., 2017; Jeschke and Burow, 2018; Chen et al., 2020; van den Bosch et al., 2020). This defense is activated upon tissue damage bringing glucosinolates into contact with myrosinases, which results in the formation of toxic glucosinolate hydrolysis products (Kissen et al., 2009; Wittstock et al., 2016). Both *P. armoraciae* larvae and adults are able to sequester high amounts of ingested glucosinolates in the hemolymph and additionally possess endogenous myrosinase activity, allowing them to exploit sequestered glucosinolates for their own purposes (Sporer et al., 2020; Yang et al., 2020).

To accumulate ingested glucosinolates in the hemolymph, *P. armoraciae* must be able to prevent hydrolysis by plant

myrosinases in the gut. A previous study suggests that *P. armoraciae* can prevent glucosinolate hydrolysis by at least two mechanisms: a rapid absorption of ingested glucosinolates across the gut epithelium and by inactivating plant myrosinases in the gut (Sporer et al., 2021). Rapid absorption of glucosinolates from the gut is likely mediated by membrane transporters. Previously, we identified a family of glucosinolate-specific membrane transporters in *P. armoraciae* (PaGTRs), which belong to the major facilitator superfamily (MFS), more specifically to the sugar porter family (Yang et al., 2021). Most PaGTR genes are specifically expressed in the Malpighian tubules, where several of them have been shown to mediate glucosinolate reabsorption. Interestingly, two PaGTRs, PaGTR2 and PaGTR3, are expressed in several other tissues including the foregut and hindgut, but not in the midgut. The presence of glucosinolate-specific transporters in the foregut suggests that this tissue plays a role in glucosinolate absorption; however, silencing PaGTR2 and PaGTR3 expression using RNA interference had no influence on the uptake of ingested glucosinolates (Yang et al., 2021). It thus remained unknown how and where *P. armoraciae* absorbs ingested glucosinolates from the gut.

The aim of this study is to determine whether the uptake of glucosinolates from the gut is selective and whether glucosinolates are absorbed across the foregut and/or across the midgut epithelium. We obtained evidence that *P. armoraciae* is able to absorb glucosinolates from the foregut, which usually does not play a role in the absorption of hydrophilic compounds. As the foregut is of ectodermal origin and therefore lined with a chitinous intima, we investigated its structure in *P. armoraciae* and also in a closely related sequestering leaf beetle (*Psylliodes chrysocephala*) and a non-sequestering species of the same family (*Phaedon cochleariae*). To identify candidate glucosinolate transporters in the foregut, we compared the expression of genes encoding putative MFS transporters in the foregut, midgut, hindgut, and Malpighian tubules. Our results lay the groundwork for molecular studies of glucosinolate transport across the gut epithelium in *P. armoraciae*.

MATERIALS AND METHODS

Insects and Plants

Phyllotreta armoraciae (*P. armoraciae* in the following) was reared on *Brassica juncea* cultivar “Bau Sin” or *Brassica rapa* cultivar “Yu Tsai Sum” (Known-You Seed Co., Ltd., Kaohsiung) plants in mesh cages in a controlled-environment chamber (24°C, 60% relative humidity, 14h light/10h dark period). Food plants were cultivated in a controlled-environment chamber (24°C, 55% relative humidity, 14h light/10h dark period). Adults were supplied with 3-week-old potted plants for feeding and egg laying. After 1 week, adults were supplied with new plants and plants with eggs were placed in a separate cage for larval development, which takes 2 to 3 weeks under these conditions. Three weeks later, the remaining plant material was discarded and the soil containing the pupae was kept in plastic containers (9l volume, Lock&Lock, Seoul, South Korea).

These containers were checked every 2–3 days for newly emerged beetles and the soil was moistened with water to prevent desiccation.

Psylliodes chrysocephala (*Ps. chrysocephala* in the following) was reared on *B. rapa* plants in mesh cages in a controlled-environment chamber (23°C, 75% relative humidity, 14h light/10h dark period). The rearing protocol is similar to that of *P. armoraciae*. As the larval development of *Ps. chrysocephala* takes longer compared to that of *P. armoraciae*, we removed the above-ground plant material after 4 weeks instead of 3 weeks.

Phaedon cochleariae (*Ph. cochleariae* in the following) was reared on Chinese cabbage, *Brassica rapa* ssp. *pekinensis*, bought in a local supermarket. All life stages were kept together in plastic containers in a controlled-environment chamber (15°C, 60% humidity, 16h light/8h dark period).

The myrosinase-deficient *Arabidopsis thaliana* *tgg1*×*tgg2* double knockout mutant was cultivated in a controlled-environment chamber under short day conditions (21°C, 55% relative humidity, 10h light/14h dark period).

Chemicals

2-Propenyl (2Prop) glucosinolate was purchased from Roth (Mannheim, Germany), 4-methylsulfinylbutyl (4MSOB) glucosinolate was purchased from PhytoPlan (Heidelberg, Germany), and 4-hydroxybenzyl (4OHBenz) glucosinolate was isolated from *Sinapis alba* seeds following Thies (1988). The phenolic glucoside salicin and the iridoid glucoside catalpol were purchased from Sigma-Aldrich (Steinheim, Germany); the cyanogenic glucoside linamarin was purchased from Biozol (Eching, Germany).

Selectivity of Glucoside Uptake

To determine whether ingested glucosides are selectively absorbed across the gut, we fed three-day-old adult *P. armoraciae* beetles (reared on *B. rapa*) with 101.2nl of an aqueous mixture of three glucosinolates and three non-host glucosides (see section Chemicals; each at 1.5mM) using a Nanoliter 2010 Injector (World Precision Instruments, Sarasota, FL, United States). To visualize the uptake into the gut and confirm that the gut tissue was not damaged during dissection, we added 0.2% (w/v) amaranth dye to the mixture. 4min after ingestion, we dissected the beetle into head, gut, and the remaining body. The dissected gut was washed twice in *ca.* 15ml of phosphate-buffered saline (PBS; pH 6.8) before sampling. As controls, we dissected beetles that had not been fed ($n=10$ per treatment, tissues of three beetles per replicate). Samples were immediately homogenized in 80% (v/v) methanol using a plastic pestle, frozen in liquid nitrogen, and stored at -20°C until extraction. Homogenized samples were vortexed for 30s and centrifuged (10min, $16,000\times g$, 4°C). The supernatant was transferred to a new reaction tube, dried using vacuum centrifugation, and re-dissolved in 60 μl ultrapure water. Samples were stored at -20°C until they were analyzed using liquid chromatography coupled with tandem mass spectrometry (LC-MS/MS). To determine the recovery rate of fed glucosides from beetle tissue extracts, we additionally extracted aliquots

of the glucoside mixture fed to the beetles as described above. The recovery rate was calculated by expressing the total detected amount of each glucoside in all extracted beetle tissues (gut, head, and remaining body) relative to the total detected amount of the same compound in control extract, which was set to 100%.

Comparison of the Glucosinolate Uptake Rate Across the Foregut and the Midgut

To investigate the glucosinolate uptake rate across the foregut, we first determined a time point at which the entire ingested plant tissue is localized in the foregut. To this end, we stopped beetle feeding at different time points, dissected the gut, and determined the localization of the ingested plant tissue under a stereo microscope. With this approach, we found ingested plant material to be localized exclusively in the foregut when beetles were dissected after feeding for 15s. To determine the glucosinolate uptake rate, we allowed newly emerged *P. armoraciae* beetles (reared on *B. juncea*) to feed for 15s on a detached *A. thaliana* *tgg1*×*tgg2* rosette leaf from a 6-week-old plant and then immediately separated the head capsule with the attached gut from the remaining body. The gut attached to the head was washed twice in *ca.* 15ml PBS buffer (pH 6.8). Afterward, the head capsule was discarded and the gut was transferred into a reaction tube. For each sample, tissues of three beetles were pooled ($n=10$). To determine the background of 4MSOB glucosinolate in beetles, we collected unfed beetles as control ($n=10$). Samples were frozen in liquid nitrogen and stored at -20°C until extraction.

To determine the glucosinolate uptake rate across the midgut, we injected 101.2nl of an *A. thaliana* *tgg1*×*tgg2* leaf extract directly into the anterior midgut of living beetles. The leaf extract was prepared by homogenizing a detached rosette leaf from a 6-week old *A. thaliana* *tgg1*×*tgg2* mutant plant using metal beads (5mm diameter, QIAGEN, Hilden, Germany) for 4min at 30Hz in a tissue lyzer (QIAGEN). After centrifugation (10min, $16,000\times g$, 4°C), we collected the supernatant and added 0.25% (w/v) amaranth dye to visualize the injection. To inject, we gently pulled the head with forceps to expose the anterior end of the midgut and injected the leaf extract using a Nanoliter 2010 Injector (World Precision Instruments). After 15s, we dissected the beetle as described above. For each sample, tissues of three beetles were pooled ($n=10$). Because we detected only traces of 4MSOB glucosinolate in unfed beetles, we did not include an additional negative control in this experiment. All samples were extracted as described above and stored at -20°C until analysis using LC-MS/MS. To determine the recovery rate of injected glucosinolates, we quantified the glucosinolate amount in an aliquot of the injected leaf extract using high performance liquid chromatography coupled with diode array detection (HPLC-DAD) as described in Yang et al. (2021). The recovery rate was calculated by quantifying the total detected amount of 4MSOB glucosinolate in gut and the remaining body extracts relative to the glucosinolate amount in the injected leaf extract, which was set to 100%. On average, we recovered between 26 and 55% of the injected 4MSOB glucosinolate from the tissue extracts.

LC-MS/MS Analysis

The levels of glucosinolates and non-host glucosides in tissue extracts were quantified using an Agilent 1200 HPLC system (Agilent, Santa Clara, CA, United States) coupled to an API5000 or an API3200 tandem mass spectrometer (AB SCIEX, Darmstadt, Germany). Glucosinolates were separated on an EC 250/4.6 NUCLEODUR Sphinx RP column (250 mm × 4.6 mm, 5 μm; Macherey-Nagel, Düren, Germany). The mobile phase consisted of 0.2% (v/v) formic acid in ultrapure water as solvent A and acetonitrile as solvent B, at a flow rate of 1 ml/min. The elution gradient was as follows: 0–1 min, 1.5% B; 1–6 min, 1.5–5% B; 6–8 min, 5–7% B; 8–18 min, 7–21% B; 18–23 min, 21–29% B; 23–23.1 min, 29–100% B; 23.1–24 min, 100% B; 24–24.1 min, 100–1.5% B; and 24.1–28 min, 1.5% B. The ionization source was set to negative mode. The ion spray voltage was maintained at –4,500 eV. Gas temperature was set to 700°C, nebulizing gas to 70 psi, drying gas to 60 psi, curtain gas to 20 psi, and collision gas to 10 psi. Non-host glucosides were separated on an Agilent XDB-C18 column (5 cm × 4.6 mm, 1.8 μm, Agilent, Waldbronn, Germany). The mobile phase consisted of 0.05% (v/v) formic acid in ultrapure water as solvent A and acetonitrile as solvent B, at a flow rate of 1.1 ml/min. The elution gradient was as follows: 0–0.5 min, 5% B; 0.5–2.5 min, 5–31% B; 2.5–2.52 min, 31–100% B; 2.25–3.5 min, 100% B; and 3.5–3.51 min, 100–5% B, 3.51–6 min, 5% B. The ion spray voltage was maintained at –4,200 eV. The turbo gas temperature was set to 630°C, nebulizing gas to 60 psi, curtain gas to 30 psi, and collision gas to 5 psi. For each compound, the transitions from precursor ion to product ion were monitored using multiple reaction monitoring (MRM; **Supplementary Table 1**). Compounds were quantified using external calibration curves. Analyst Software 1.6 Build 3773 (AB SCIEX) was used to acquire and process data.

Comparison of the Foregut Structure of Sequestering and Non-sequestering Leaf Beetle Species

To further investigate absorption *via* the foregut, we compared its morphological properties in *Ps. armoraciae* with those in another sequestering flea beetle (*Ps. chrysocephala*) and in the non-sequestering chrysomeline species *Ph. cochleariae*. To document the properties of the foregut, we used micro computed tomography (μCT), confocal laser scanning microscopy (CLSM), and transmission electron microscopy (TEM).

For μCT analysis, specimens (with legs removed) were fixed in Duboscq-Brasil fixative for 1 d, washed using 70% (v/v) ethanol, dehydrated with ethanol (70–100%), stained in 1% (w/v) iodine in ethanol for 4 d, and critical-point dried (EmiTech K850 Critical Point Dryer, Quorum Technologies Ltd., Ashford, England). Dried specimens were scanned using a Bruker Skyscan 2211 μCT scanner (Kontich, Belgium), equipped with a high-resolution X-ray sensitive CCD camera. Setting parameters are provided in **Supplementary Table 2**. Segmentation was done with Amira 6.0.1 software (Thermo Fisher Scientific, Hillsboro, United States).

For CLSM analysis, we placed dissected foregut tissue in glycerol. Fluorescent images were acquired using a Zeiss cLSM

880 (Oberkochen, Germany) equipped with a 10x/0.3 air objective (EC Plan-Neofluar, Zeiss) for overview images and a 40x/1.2 water objective (C-Apochromat, Zeiss) for detailed views. A 405 nm laser diode was used for excitation. Autofluorescence emission was detected between 410 nm and 695 nm. Overviews were acquired as tiled z-stacks with 10% overlap using the ZEN software (black 2.1, Zeiss).

For TEM analysis, we fixed specimens (with legs removed) in Karnovsky's fixative (4% formaldehyde and 2.5% glutaraldehyde in 0.1 M Na-cacodylate buffer; pH 7.4) for 24 h at room temperature. Afterward, specimens were washed in 0.1 M Na-cacodylate buffer and the head with the foregut was dissected in the same buffer. Post-fixation of the dissected tissue was performed using osmium tetroxide (1% OsO₄ in 0.1 M Na-cacodylate buffer) for 2 h. Afterward, samples were washed in 0.1 M Na-cacodylate buffer, dehydrated in ethanol (30% for 10 min and 50% for 5 min), stained using 2% uranyl acetate (in 50% ethanol) for 1 h in the dark, dehydrated in ethanol (50–100%), and finally in propylene oxide for 2 min. Samples were transferred into a series of mixtures of Araldite (Plano GmbH, Wetzlar, Germany) and propylene oxide (1:2; 1:1; and 2:1, at least 1 h for each step), and embedded in pure Araldite. The embedded samples were cut using Leica Ultracut S (Leica, Wetzlar, Germany), and scanned using a Zeiss EM 900 TEM with a resolution of 0.6 nm, operated at 80 kV. Photo documentation was done with a TRS slow scan CCD camera system (Moorenweis, Germany).

Tissue-Specific Expression of Putative MFS Transporter Genes

We previously annotated 222 putative MFS transporters in a gut- and Malpighian tubule-specific transcriptome of adult *P. armoraciae* beetles, and performed RNA-sequencing to investigate their expression in the foregut, midgut, hindgut, and Malpighian tubules, respectively, each with four replicates (Yang et al., 2021). To compare the expression of putative MFS transporter genes across these four tissues, we analyzed the dataset as follows. First, we excluded lowly expressed genes with mean TPM (transcripts per kilobase million) values below 1 in all four tissues (**Supplementary Data 1**). Genes with a mean TPM value below 1 in one tissue were considered as not expressed in the respective tissue. After sorting MFS transporter genes according to their TPM values within each tissue, we visualized gene expression in the foregut, midgut, hindgut, and Malpighian tubules using a heatmap generated in HemI (Deng et al., 2014).

Statistical Analysis

Statistical analyses were conducted in SigmaPlot 14.0 (Systat Software Inc., Erkrath, Germany) or in R 4.0.4 (R Core Team, 2021). The recovery of different glucosides fed to the beetles, and the sequestration of different glucosides relative to recovered amounts were compared using one-way ANOVA, followed by post-hoc multiple comparisons test. The sequestration of different glucosides relative to ingested glucosides were compared using generalized least squares method (Pinheiro et al., 2019). The overall gene expression levels of the expressed MFS genes in

foregut and midgut were compared using the 141 TPM values from each tissue by Mann–Whitney *U*-test. If necessary, data were transformed prior to analysis. For analyses using the generalized least squares method, varIdent variance structure was used to allow each group to have a different variance. Likelihood ratio tests were applied to obtain *p* values by comparing models with and without explanatory variables (Zuur et al., 2009). Significant differences between groups were revealed with factor level reductions (Crawley, 2013). Glucosinolate uptake rate across the foregut and midgut were compared by Mann–Whitney *U*-test. Information about data transformation, statistical methods, and results of the statistical analyses are summarized in **Supplementary Table 3**.

RESULTS

Phyllotreta armoraciae Selectively Absorbs Ingested Glucosinolates Across the Gut

To investigate whether *P. armoraciae* adults possess a selective uptake mechanism for glucosinolates, we fed beetles with an aqueous equimolar mixture of glucosinolates and non-host glucosides (**Figure 1A**), dissected them into head, gut, and the remaining body, and quantified the amounts of each glucoside in tissue extracts using LC–MS/MS. The total recovery rate differed significantly among the glucosides (ANOVA, $F=22.339$, $p<0.001$; **Figure 1B**), ranging from only 13% for catalpol to up to 64% for 4MSOB glucosinolate. We then compared how much of each glucoside was sequestered in the beetle body (without head and gut) and found that significantly more ingested glucosinolates had been sequestered than non-host glucosides (**Figure 1C**; generalized least squares, $F=96.645$, $p<0.001$). In addition, the relative distribution of the six glucosides in beetle tissues differed (body versus gut and head; ANOVA, $F=97.140$, $p<0.001$), with most glucosinolates found in the body (between 68 and 86%), and most non-host glucosides found in the head and gut (**Figure 1D**).

Glucosinolates Are Rapidly Absorbed Across the Foregut

To determine whether ingested glucosinolates are absorbed across the foregut epithelium, we separated the gut and the remaining body of beetles that had fed for 15 s on a leaf of the myrosinase-deficient *A. thaliana* *tgg1* × *tgg2* mutant. Afterward, we analyzed the distribution of ingested 4MSOB glucosinolate in tissue extracts using LC–MS/MS. At this time point, the ingested plant material was still localized in the foregut (**Figure 2A**), and 55% of the total detected glucosinolates were found in body extracts (**Figure 2B**).

To determine the glucosinolate uptake rate from the midgut, we injected an *A. thaliana* *tgg1* × *tgg2* mutant leaf extract directly into the anterior midgut (**Figure 2A**) and analyzed the distribution of 4MSOB glucosinolate in the gut and the remaining body 15 s later. In this experiment, only 7% of the total detected 4MSOB glucosinolate were sequestered in the body (**Figure 2B**).

Thus, the glucosinolate uptake rate from the midgut was significantly slower than that from the foregut under our experimental conditions (Mann–Whitney *U*-test, $U=0$, $p<0.001$).

Expression of MFS Transporter Genes in the Foregut

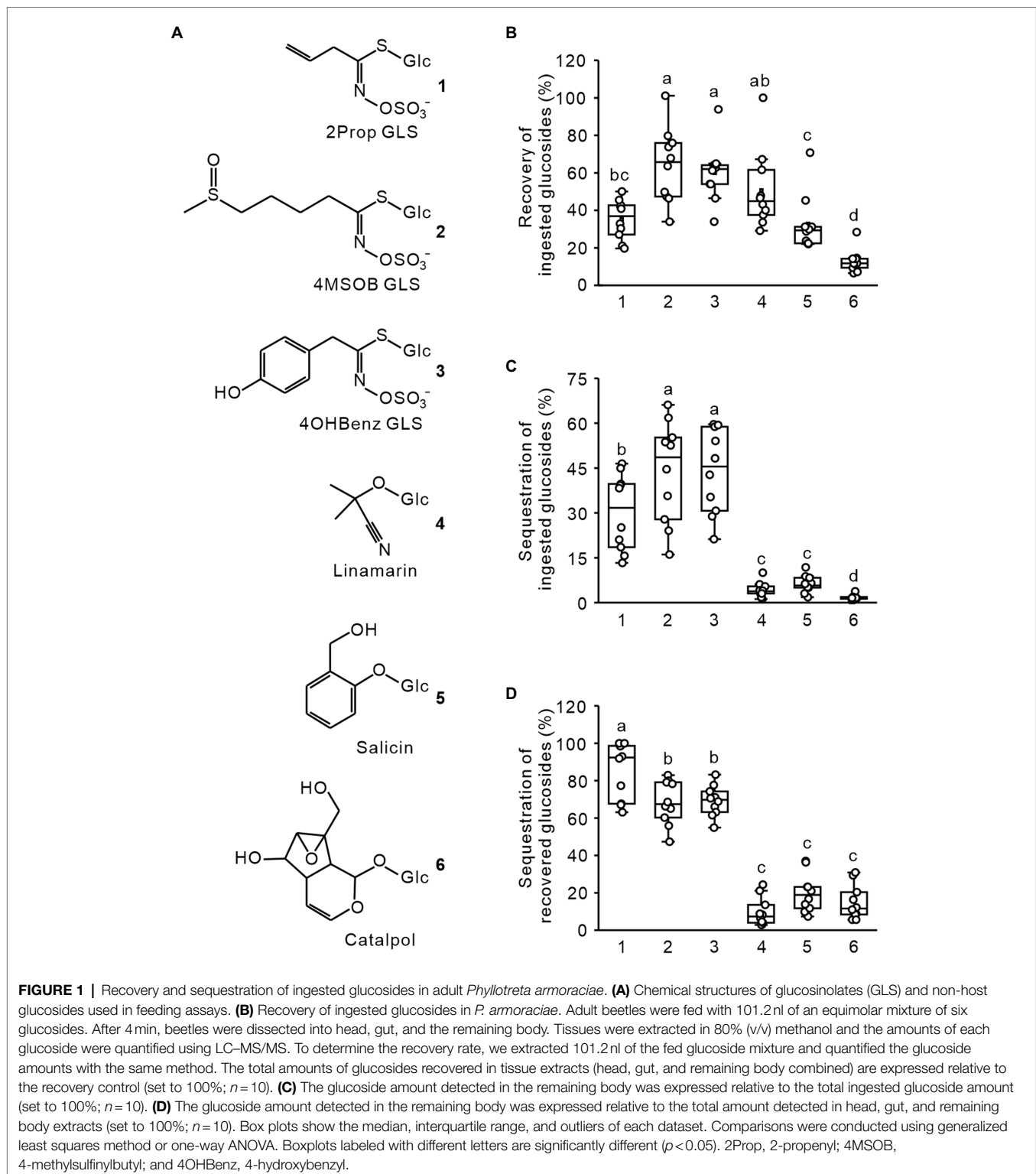
To identify candidate transporters involved in glucosinolate absorption across the foregut, we analyzed the expression of putative MFS transporter genes that were previously identified in a gut- and Malpighian tubule-specific transcriptome in the foregut, midgut, hindgut, and Malpighian tubules of adult *P. armoraciae* beetles. From a total of 141 expressed putative MFS transporter genes, 72 were expressed in the foregut, of which nine were expressed at least 2-fold higher in the foregut than in any other tissue (**Figure 3**; **Supplementary Data 1**). These nine genes comprised four members of the sugar porter family (2.A.1.1), including the previously identified glucosinolate-specific transporter *PaGTR3*, and the transporter gene with the highest expression level in the foregut, a member of the endosomal spinster family (2.A.1.49) and members of several other MFS transporter families (**Supplementary Data 1**). The overall expression level of MFS transporter genes in the foregut did not differ from that in the midgut (**Figure 3A**, Mann–Whitney *U*-test, $U=8922$, $p=0.136$).

The Foregut Structure of Sequestering and Non-sequestering Leaf Beetle Species Differs

3D reconstructions of the entire digestive system revealed distinct differences in the relative size of the foregut between *P. armoraciae*, the closely related glucosinolate-sequestering *Ps. chrysocephala*, and the non-sequestering *Ph. cochleariae*. In particular, the foregut of *Ps. chrysocephala* was very small compared to the foreguts of *P. armoraciae* and *Ph. cochleariae* (**Figure 4A**). We then visualized the chitinous intima covering the foregut epithelium using CLSM. Chitin autofluorescence appeared “mesh-like” in *P. armoraciae*, “brick-like” in *Ps. chrysocephala*, and as a more continuous layer in *Ph. cochleariae* (**Figures 4B,C**). Chitin is usually organized in microfibrils that are arranged in horizontal sheets (laminae) in the procuticle. In TEM analyses, chitin laminae were clearly visible in the procuticle of *Ph. cochleariae*, but not in the much thinner procuticles of *P. armoraciae* and *Ps. chrysocephala* (**Figure 5**).

DISCUSSION

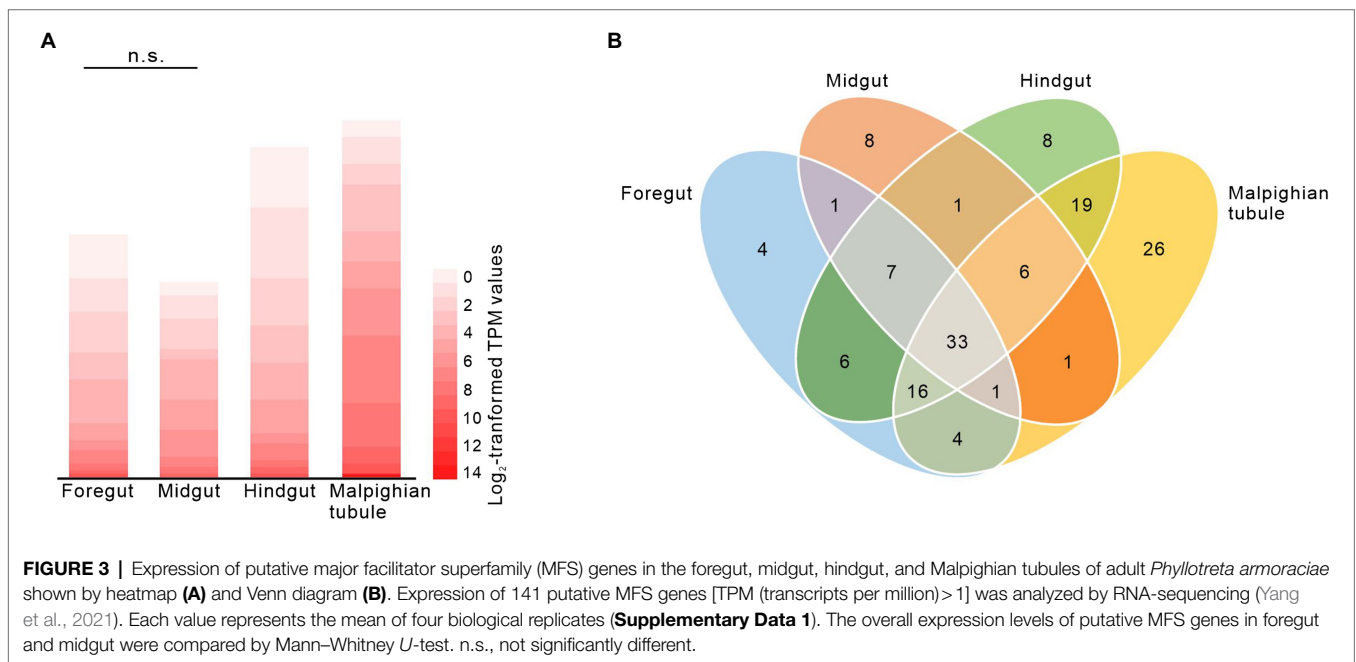
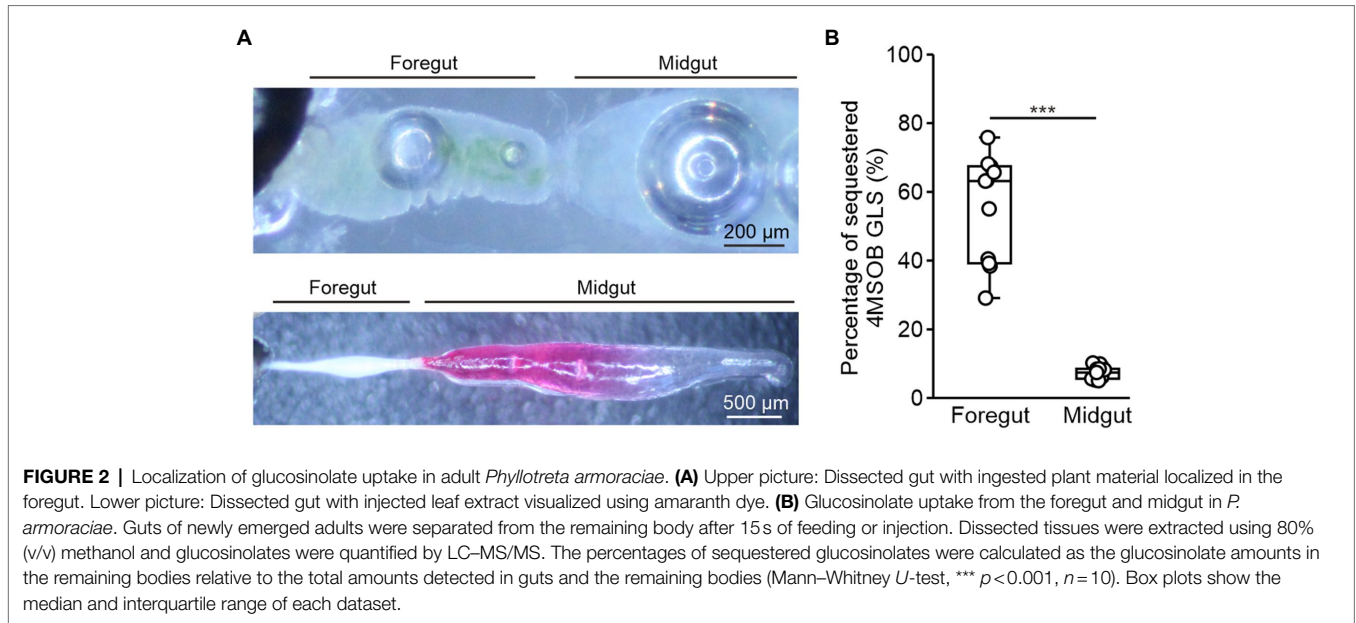
The horseradish flea beetle *P. armoraciae* partially prevents the hydrolysis of ingested glucosinolates by plant myrosinases and is able to accumulate large amounts of these defense compounds in the body, mainly in the hemolymph (Sporer et al., 2020; Yang et al., 2020; Sporer et al., 2021). Here, we demonstrate that uptake of glucosinolates from the gut lumen is rapid and selective. We also provide evidence that *P. armoraciae* is able to absorb glucosinolates across the foregut epithelium, a tissue



not previously reported to mediate uptake of hydrophilic compounds.

The major functions of the insect foregut are uptake, mechanical grinding, and temporary storage of food before its transfer through the proventriculus to the midgut, where

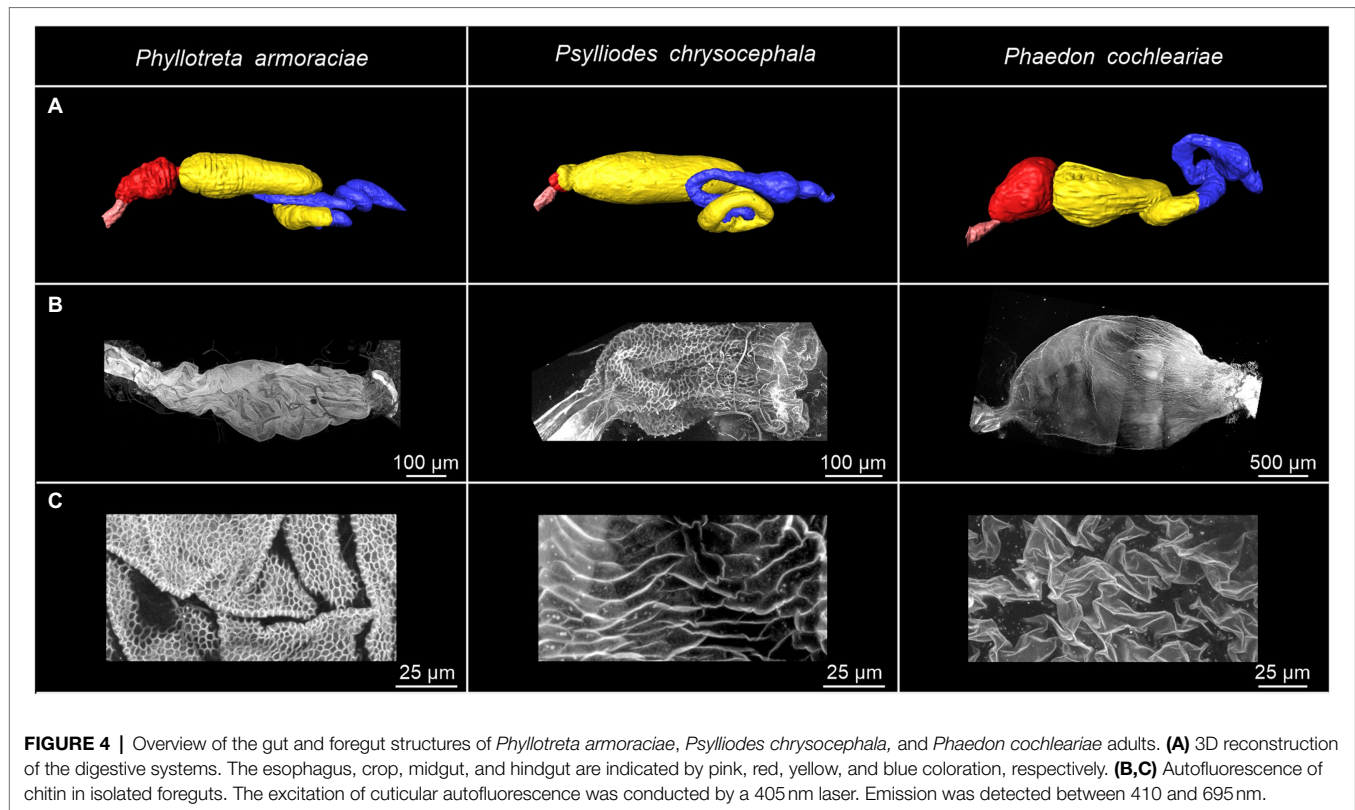
enzymatic digestion and nutrient absorption take place (Chapman, 2013; Denecke et al., 2018; Holtorf et al., 2019). Although the permeability of the foregut is generally considered to be very low (Maddrell and Gardiner, 1980), some insect species have been reported to absorb lipophilic compounds,



such as cholesterol from the crop (Hoffman and Downer, 1976; Joshi and Agarwal, 1977). In addition, lipophilic insecticides have been shown to be taken up into foregut tissue of the honeybee *Apis mellifera* (Conner et al., 1978). The foregut may even play a role in insecticide detoxification, as treatment of the cockroach *Periplaneta americana* with the neonicotinoid insecticide cyclozaprid resulted in an upregulation of 22 putative xenobiotic detoxification genes in foregut tissue (Zhang et al., 2018). Another study proposed that a sugar receptor that is strongly expressed in the foregut of larvae of the cotton bollworm *Helicoverpa armigera* (Noctuidae) is involved in regulating

feeding behavior (Xu et al., 2012). However, compared to the midgut, the foregut is a poorly studied part of the insect digestive system and has been largely excluded from studies of active uptake of hydrophilic compounds.

Adults of *P. armoraciae* were previously shown to absorb a major proportion of ingested glucosinolates within a few minutes from the gut, which demonstrates that glucosinolates are taken up in the anterior part of the digestive tract with an efficient and fast mechanism (Sporer et al., 2021). In this study, we detected ingested glucosinolates in the beetle body when the corresponding plant material was still in the foregut,



suggesting that these glucosinolates have been absorbed across the foregut epithelium within less than 1 min after oral uptake (Figure 2). Glucosinolate uptake from the midgut was significantly slower than that from the foregut under our experimental conditions (Figure 2), although we cannot exclude that the injection of a liquid plant extract into the midgut lumen has influenced the glucosinolate uptake rate. Together, our results show that glucosinolates can be absorbed from both the foregut and midgut and suggest that the foregut plays a key role in the uptake of glucosinolates in *P. armoraciae*. Studies with the turnip sawfly *Athalia rosae* also showed a rapid uptake of ingested glucosinolates, which might at least partly take place in the larval foregut (Abdalsamee et al., 2014). However, experimental evidence for this is still lacking. Currently, this phenomenon is insufficiently explored. More species should be investigated to assess the role of the foregut in sequestration of glucosinolates in other groups of insects.

Although both the foregut and the hindgut are lined with a thin cuticular layer, the hindgut intima is much more permeable than that of the foregut as far as known at present (Maddrell and Gardiner, 1980; Chapman, 2013). In the hindgut, water and ions are mainly absorbed from the rectum, which is characterized by a thin epithelium covered with a thin and unsclerotized cuticle (Chapman, 2013). Very little is presently known on the ultrastructure of the foregut of beetles and other insects. Our comparison of the foregut of *P. armoraciae* and two other chrysomelid beetles revealed very distinct differences between the two sequestering and the non-sequestering species, mainly in the structural organization

of the chitinous matrix and the overall thickness of the procuticle (Figure 5). These structural differences suggest that the expression level and/or activity of chitin synthases and chitin deacetylases, which influence the amount and structure of chitin in the cuticle (Arakane et al., 2005; Wu et al., 2019; Zhang et al., 2021a), may differ between these leaf beetle species. That the procuticular structure can influence the permeability of insect cuticle was shown in a recent study on migratory locusts (*Locusta migratoria*). Silencing the expression of two chitin deacetylase genes not only increased the susceptibility to infection with an entomopathogenic fungus but also increased the permeability of the cuticle for organophosphorus insecticides compared to a control group (Zhang et al., 2021b). Whether the observed structural differences of the foregut cuticle of sequestering and non-sequestering leaf beetles indeed influence the permeability for hydrophilic compounds like glucosinolates remains to be shown. Comparative studies with a broader sampling may help to reveal mechanisms facilitating the passage and to assess the significance of structural adaptations of the foregut in sequestering and non-sequestering leaf beetles.

P. armoraciae absorbed significantly more glucosinolates from the gut than non-host glucosides. This could reflect the substrate specificity of one or several membrane transporters that mediate glucoside absorption from the gut. Several glucosinolate-specific membrane transporters have already been identified in *P. armoraciae*, most of which are localized in the Malpighian tubules. There they prevent the excretion of glucosinolates by selectively reabsorbing them from the lumen of these excretory organs back into the epithelium (Yang et al., 2021). Two glucosinolate-specific transporters

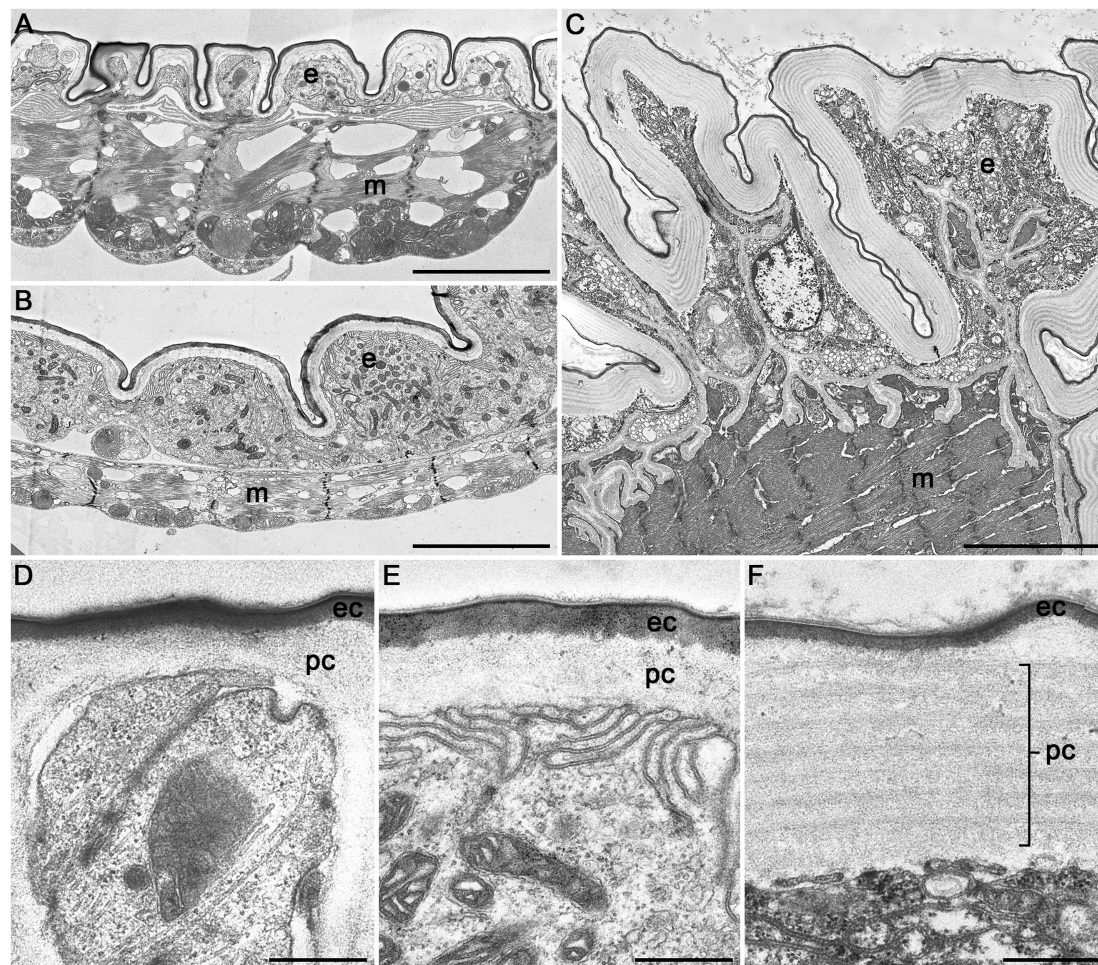


FIGURE 5 | Transmission electron microscopic images of cross sections of the crop of *Phyllotreta armoraciae* (A,D), *Psylliodes chrysocephala* (B,E), and *Phaedon cochleariae* (C,F). A notable difference in overall size is shown in (A–C) (same magnification). A continuous epithelial cell layer (e), muscle layer (m), procuticle (pc), and epicuticle (ec) are visible in all three species. Scale bars are 5 μ m (A–C) and 500 nm (D–F).

with a broad substrate specificity were also expressed in the foregut, but silencing their expression had no influence on glucosinolate uptake (Yang et al., 2021). As our study clearly suggests that glucosinolates are absorbed across the foregut epithelium, we propose that additional transporters in the foregut are responsible for glucosinolate uptake. Gene expression analyses were used to identify more candidates belonging to the MFS transporters, which will be tested in the future (Figure 3; Supplementary Data 1). In addition, transporters belonging to other families could also play a role in glucosinolate absorption in the foregut. We will thus extend the tissue-specific expression analysis to other membrane transporter families in future studies. For example, ATP binding cassette (ABC) transporter family could be involved in the export of glucosinolates from epithelial cells, as this family of membrane transporters is known to be involved in sequestration in other leaf beetle species (Strauss et al., 2013; Schmidt et al., 2019; Kowalski et al., 2020).

Although our study is mainly focused on transport, we additionally made interesting observations regarding the

metabolic fate of ingested glucosides in *P. armoraciae* (Figure 1B). For example, from the three tested glucosinolates, we recovered significantly less 2-propenyl glucosinolate in our extracts, which suggests that a higher proportion of this glucosinolate has been metabolized. In addition, we recovered significantly less salicin and catalpol compared to linamarin. The different recovery rates might reflect the substrate preferences of β -thioglucosidase (myrosinase) and β -O-glucosidase enzymes present in *P. armoraciae*. For instance, the previously identified myrosinase from *Phyllotreta striolata* showed β -thioglucosidase as well as β -O-glucosidase activity, although the highest enzyme activity was detected in assays with 2-propenyl glucosinolate as a substrate (Beran et al., 2014). Of course, we cannot rule out that other pathways contribute to glucoside metabolism in *P. armoraciae*.

In summary, our data revealed a rapid and selective glucosinolate uptake mechanism in *P. armoraciae*, which contributes to the selective accumulation of glucosinolates in this insect. We demonstrated an unusual glucosinolate uptake mechanism that involves very efficient absorption from the foregut rather

than from the midgut. This rapid uptake is reducing the exposure time of ingested glucosinolates to co-ingested plant myrosinases and insect digestive enzymes, and might thus help *P. armoraciae* to prevent glucosinolate hydrolysis.

DATA AVAILABILITY STATEMENT

The datasets presented in this study are available at the open access data repository of the Max Planck Society (Edmond) under <https://dx.doi.org/10.17617/3.8q>.

AUTHOR CONTRIBUTIONS

Z-LY and FB designed the experiments and wrote the manuscript. Z-LY, FS, VG, SN, and AR performed the experiments. Z-LY, FS, VG, SN, MR, and RB analyzed the data. All authors contributed to the article and approved the submitted version.

FUNDING

This project was funded by the Max Planck Society.

REFERENCES

- Abdalsamee, M. K., Giampà, M., Niehaus, K., and Müller, C. (2014). Rapid incorporation of glucosinolates as a strategy used by a herbivore to prevent activation by myrosinases. *Insect Biochem. Mol. Biol.* 52, 115–123. doi: 10.1016/j.ibmb.2014.07.002
- Agrawal, A. A., Petschenka, G., Bingham, R. A., Weber, M. G., and Rasmann, S. (2012). Toxic cardenolides: chemical ecology and coevolution of specialized plant-herbivore interactions. *New Phytol.* 194, 28–45. doi: 10.1111/j.1469-8137.2011.04049.x
- Arakane, Y., Muthukrishnan, S., Kramer, K., Specht, C., Tomoyasu, Y., Lorenzen, M., et al. (2005). The *Tribolium chitin synthase* genes *TcCHS1* and *TcCHS2* are specialized for synthesis of epidermal cuticle and midgut peritrophic matrix. *Insect Mol. Biol.* 14, 453–463. doi: 10.1111/j.1365-2583.2005.00576.x
- Beran, F., Pauchet, Y., Kunert, G., Reichelt, M., Wielsch, N., Vogel, H., et al. (2014). *Phyllotreta striolata* flea beetles use host plant defense compounds to create their own glucosinolate-myrosinase system. *Proc. Natl. Acad. Sci. U. S. A.* 111, 7349–7354. doi: 10.1073/pnas.1321781111
- Chapman, R. F. (2013). *The Insects: Structure and Function*. New York: Cambridge University Press.
- Chen, J., Ullah, C., Reichelt, M., Beran, F., Yang, Z.-L., Gershenson, J., et al. (2020). The phytopathogenic fungus *Sclerotinia sclerotiorum* detoxifies plant glucosinolate hydrolysis products via an isothiocyanate hydrolase. *Nat. Commun.* 11, 3090–3012. doi: 10.1038/s41467-020-16921-2
- Conner, W., Wilkinson, C., and Morse, R. (1978). Penetration of insecticides through the foregut of the honeybee (*Apis mellifera* L.). *Pestic. Biochem. Phys.* 9, 131–139. doi: 10.1016/0048-3575(78)90073-1
- Crawley, M. J. (2013). *The R Book*. Chichester: Wiley.
- Denecke, S., Swevers, L., Douris, V., and Vontas, J. (2018). How do oral insecticidal compounds cross the insect midgut epithelium? *Insect Biochem. Mol. Biol.* 103, 22–35. doi: 10.1016/j.ibmb.2018.10.005
- Deng, W., Wang, Y., Liu, Z., Cheng, H., and Xue, Y. (2014). HemI: a toolkit for illustrating heatmaps. *PLoS One* 9:e111988. doi: 10.1371/journal.pone.0111988
- Discher, S., Burse, A., Tolzin-Banasch, K., Heinemann, S. H., Pasteels, J. M., and Boland, W. (2009). A versatile transport network for sequestering and excreting plant glycosides in leaf beetles provides an evolutionary flexible defense strategy. *Chembiochem* 10, 2223–2229. doi: 10.1002/cbic.200900226

ACKNOWLEDGMENTS

We thank Hans Pohl and Anika Hopf for their help with sample preparation for μ CT and TEM analyses, respectively, Roy Kirsch for providing *Phaedon cochleariae* beetles, Alexander Schilling for help with beetle rearing, Jürgen Rybak for discussions, and the greenhouse team at the MPI for Chemical Ecology for plant cultivation.

SUPPLEMENTARY MATERIAL

The Supplementary Material for this article can be found online at: <https://www.frontiersin.org/articles/10.3389/fphys.2022.846732/full#supplementary-material>

Supplementary Data 1 | The major facilitator superfamily (MFS) gene expression analyzed by RNA-sequencing.

Supplementary Table 1 | Multiple reaction monitoring (MRM) transitions for compounds determined using LC-MS/MS.

Supplementary Table 2 | μ CT parameters.

Supplementary Table 3 | Methods and results of statistical analyses.

- Duffey, S. S. (1980). Sequestration of plant natural products by insects. *Annu. Rev. Entomol.* 25, 447–477. doi: 10.1146/annurev.en.25.010180.002311
- Erb, M., and Robert, C. A. (2016). Sequestration of plant secondary metabolites by insect herbivores: molecular mechanisms and ecological consequences. *Curr. Opin. Insect Sci.* 14, 8–11. doi: 10.1016/j.cois.2015.11.005
- Heckel, D. G. (2014). “Insect Detoxification and Sequestration Strategies.” in *Insect-Plant Interactions*. Vol. 47. eds. C. Voelckel and G. Jander (Chichester: John Wiley & Sons, Ltd.), 77–114.
- Heidel-Fischer, H. M., and Vogel, H. (2015). Molecular mechanisms of insect adaptation to plant secondary compounds. *Curr. Opin. Insect Sci.* 8, 8–14. doi: 10.1016/j.cois.2015.02.004
- Hoffman, A., and Downer, R. (1976). The crop as an organ of glyceride absorption in the American cockroach, *Periplaneta americana* L. *Can. J. Zool.* 54, 1165–1171. doi: 10.1139/z76-133
- Holtorf, M., Lenaerts, C., Cullen, D., and Broeck, J. V. (2019). Extracellular nutrient digestion and absorption in the insect gut. *Cell Tissue Res.* 377, 397–414. doi: 10.1007/s00441-019-03031-9
- Hopkins, R. J., van Dam, N. M., and van Loon, J. J. (2009). Role of glucosinolates in insect-plant relationships and multitrophic interactions. *Annu. Rev. Entomol.* 54, 57–83. doi: 10.1146/annurev.ento.54.110807.090623
- Huang, J.-H., Jing, X., and Douglas, A. E. (2015). The multi-tasking gut epithelium of insects. *Insect Biochem. Mol. Biol.* 67, 15–20. doi: 10.1016/j.ibmb.2015.05.004
- Jeschke, V., and Burow, M. (2018). “Glucosinolates.” in *eLS*. (Hoboken, NJ, USA: John Wiley & Sons, Ltd.) 1–8.
- Jeschke, V., Kearney, E. E., Schramm, K., Kunert, G., Shekhov, A., Gershenson, J., et al. (2017). How glucosinolates affect generalist lepidopteran larvae: growth, development and glucosinolate metabolism. *Front. Plant Sci.* 8:1995. doi: 10.3389/fpls.2017.01995
- Joshi, M., and Agarwal, H. C. (1977). Site of cholesterol absorption in some insects. *J. Insect Physiol.* 23, 403–404. doi: 10.1016/0022-1910(77)90280-3
- Kissen, R., Rossiter, J. T., and Bones, A. M. (2009). The ‘mustard oil bomb’: not so easy to assemble?! Localization, expression and distribution of the components of the myrosinase enzyme system. *Phytochem. Rev.* 8, 69–86. doi: 10.1007/s11101-008-9109-1
- Kowalski, P., Baum, M., Körten, M., Donath, A., and Dobler, S. (2020). ABCB transporters in a leaf beetle respond to sequestered plant toxins. *Proc. Royal Soc. B.* 287:20201311. doi: 10.1098/rspb.2020.1311

- Kuhn, J., Pettersson, E. M., Feld, B. K., Burse, A., Termonia, A., Pasteels, J. M., et al. (2004). Selective transport systems mediate sequestration of plant glucosides in leaf beetles: a molecular basis for adaptation and evolution. *Proc. Natl. Acad. Sci. U. S. A.* 101, 13808–13813. doi: 10.1073/pnas.0402576101
- Maddrell, S., and Gardiner, B. (1980). The permeability of the cuticular lining of the insect alimentary canal. *J. Exp. Biol.* 85, 227–237. doi: 10.1242/jeb.85.1.227
- Opitz, S. E. W., and Müller, C. (2009). Plant chemistry and insect sequestration. *Chemoecology* 19, 117–154. doi: 10.1007/s00049-009-0018-6
- Pentzold, S., Zagrobelny, M., Rook, F., and Bak, S. (2014). How insects overcome two-component plant chemical defence: plant β -glucosidases as the main target for herbivore adaptation. *Biol. Rev.* 89, 531–551. doi: 10.1111/brv.12066
- Petschenka, G., and Agrawal, A. A. (2016). How herbivores coopt plant defenses: natural selection, specialization, and sequestration. *Curr. Opin. Insect Sci.* 14, 17–24. doi: 10.1016/j.cois.2015.12.004
- Pinheiro, J., Bates, D., DebRoy, S., and Sarkar, D. R Core team (2019). Nlme: linear and nonlinear mixed effects models. R package version. 2007. 3, 1–89.
- R Core Team (2021). *R: A Language and Environment for Statistical Computing*. R Foundation for Statistical Computing, Vienna.
- Rashid War, A., Kumar Taggar, G., Hussain, B., Sachdeva Taggar, M., Nair, R. M., and Sharma, H. C. (2018). Plant defense against herbivory and insect adaptations. *AoB Plants*. doi: 10.1093/aobpla/ply037
- Schmidt, L., Wielsch, N., Wang, D., Boland, W., and Burse, A. (2019). Tissue-specific profiling of membrane proteins in the salicin sequestering juveniles of the herbivorous leaf beetle, *Chrysomela populi*. *Insect Biochem. Mol. Biol.* 109, 81–91. doi: 10.1016/j.ibmb.2019.03.009
- Scudder, G., and Meredith, J. (1982). The permeability of the midgut of three insects to cardiac glycosides. *J. Insect Physiol.* 28, 689–694. doi: 10.1016/0022-1910(82)90147-0
- Sporer, T., Körnig, J., and Beran, F. (2020). Ontogenetic differences in the chemical defence of flea beetles influence their predation risk. *Funct. Ecol.* 34, 1370–1379. doi: 10.1111/1365-2435.13548
- Sporer, T., Körnig, J., Wielsch, N., Gebauer-Jung, S., Reichelt, M., Hupfer, Y., et al. (2021). Hijacking the mustard-oil bomb: how a glucosinolate-sequestering flea beetle copes with plant myrosinases. *Front. Plant Sci.* 12:645030. doi: 10.3389/fpls.2021.645030
- Strauss, A. S., Peters, S., Boland, W., and Burse, A. (2013). ABC transporter functions as a pacemaker for sequestration of plant glucosides in leaf beetles. *eLife* 2:e01096. doi: 10.7554/eLife.01096
- Thies, W. (1988). Isolation of sinigrin and glucotropaeolin from cruciferous seeds. *Fat Sci. Technol.* 90, 311–314. doi: 10.1002/lipi.19880900806
- van den Bosch, T. J., Niemi, O., and Welte, C. U. (2020). Single gene enables plant pathogenic *Pectobacterium* to overcome host-specific chemical defence. *Mol. Plant Pathol.* 21, 349–359. doi: 10.1111/mpp.12900
- Wittstock, U., Kurzbach, E., Herfurth, A. -M., and Stauber, E. J. (2016). “Chapter Six - Glucosinolate Breakdown” in *Advances in Botanical Research*. ed. S. Kopriva (Academic Press), 125–169.
- Wu, J. J., Chen, Z. C., Wang, Y. W., Fu, K. Y., Guo, W. C., and Li, G. Q. (2019). Silencing *chitin deacetylase 2* impairs larval–pupal and pupal–adult molts in *Leptinotarsa decemlineata*. *Insect Mol. Biol.* 28, 52–64. doi: 10.1111/imb.12524
- Xu, W., Zhang, H.-J., and Anderson, A. (2012). A sugar gustatory receptor identified from the foregut of cotton bollworm *Helicoverpa armigera*. *J. Chem. Ecol.* 38, 1513–1520. doi: 10.1007/s10886-012-0221-8
- Yang, Z.-L., Kunert, G., Sporer, T., Körnig, J., and Beran, F. (2020). Glucosinolate abundance and composition in Brassicaceae influence sequestration in a specialist flea beetle. *J. Chem. Ecol.* 46, 186–197. doi: 10.1007/s10886-020-01144-y
- Yang, Z.-L., Nour-Eldin, H. H., Hänniger, S., Reichelt, M., Crocoll, C., Seitz, F., et al. (2021). Sugar transporters enable a leaf beetle to accumulate plant defense compounds. *Nat. Commun.* 12, 2658–2612. doi: 10.1038/s41467-021-22982-8
- Zhang, M., Ma, P. J., Zhang, T. T., Gao, Z. M., Zhao, P., Liu, X. J., et al. (2021a). Roles of LmCDA1 and LmCDA2 in cuticle formation in the foregut and hindgut of *Locusta migratoria*. *Insect Sci.* 28, 1314–1325. doi: 10.1111/1744-7917.12874
- Zhang, T., Ma, P., Zhou, J., He, Y., Liu, W., Liu, X., et al. (2021b). Group I CDAs are responsible for a selective CHC-independent cuticular barrier in *Locusta migratoria*. *Pestic. Biochem. Phys.* 175:104854. doi: 10.1016/j.pestbp.2021.104854
- Zhang, J. H., Zhang, S., Yang, Y. X., Zhang, Y. X., and Liu, Z. W. (2018). New insight into foregut functions of xenobiotic detoxification in the cockroach *Periplaneta americana*. *Insect Sci.* 25, 978–990. doi: 10.1111/1744-7917.12486
- Zuur, A. F., Ieno, E. N., Walker, N. J., Saveliev, A. A., and Smith, G. M. (2009). *Mixed Effects Models and Extensions in Ecology with R*. New York: Springer.

Conflict of Interest: The authors declare that the research was conducted in the absence of any commercial or financial relationships that could be construed as a potential conflict of interest.

Publisher’s Note: All claims expressed in this article are solely those of the authors and do not necessarily represent those of their affiliated organizations, or those of the publisher, the editors and the reviewers. Any product that may be evaluated in this article, or claim that may be made by its manufacturer, is not guaranteed or endorsed by the publisher.

Copyright © 2022 Yang, Seitz, Grabe, Nietzsche, Richter, Reichelt, Beutel and Beran. This is an open-access article distributed under the terms of the Creative Commons Attribution License (CC BY). The use, distribution or reproduction in other forums is permitted, provided the original author(s) and the copyright owner(s) are credited and that the original publication in this journal is cited, in accordance with accepted academic practice. No use, distribution or reproduction is permitted which does not comply with these terms.