


RESEARCH

Open Access



Sphingosine-1-phosphate and CRP as potential combination biomarkers in discrimination of COPD with community-acquired pneumonia and acute exacerbation of COPD

Chin-Wang Hsu^{1,2}, Chi-Won Suk³, Yuan-Pin Hsu^{1,2,4}, Jer-Hwa Chang^{3,5}, Chung-Te Liu^{4,6,7}, Shau-Ku Huang^{8,9,10,11} and Shih-Chang Hsu^{1,2*} 

Abstract

Background: Chronic obstructive pulmonary disease (COPD) is a significant public health concern. The patients with acute exacerbations of COPD (AECOPD) and pneumonia have similar clinical presentations. The use of conventional diagnostic markers, such as complete blood count with differential and C-reactive protein (CRP), is the current mainstream method for differentiating clinically relevant pneumonia from other mimics. However, those conventional methods have suboptimal sensitivity and specificity for patients with a clinical suspicion of infection. The limitations often cause the ambiguity of the initiation of antibiotic treatment. Recently, our pilot study suggested that the patients with pneumonia have significantly higher plasma Sphingosine-1-phosphate (S1P) levels than controls. The initial findings suggest that plasma S1P is a potential biomarker for predicting prognosis in pneumonia. The aim of this study was to evaluate the value of S1P and CRP for discriminating COPD with pneumonia and AECOPD in an Emergency Department (ED) setting.

Methods: Patients diagnosed with AECOPD or COPD with pneumonia were recruited from the Emergency Department of Wan Fang Hospital. The clinical data, demographics, and blood samples were collected upon ED admission. The concentration of plasma S1P was measured by ELISA.

Results: Thirty-nine patients with AECOPD and 78 with COPD plus pneumonia were enrolled in this observational study. The levels of blood S1P and CRP were significantly higher in patients with COPD plus CAP compared to those in AECOPD patients. The area under the receiver operator characteristic (ROC) curve for the S1P and CRP for distinguishing between patients with COPD plus CAP and AECOPD is 0.939 (95% CI: 0.894–0.984) and 0.886 (95% CI: 0.826–0.945), whereas the combination of S1P and CRP yielded a value of 0.994 (95% CI: 0.897–1.000). By comparing with CRP or S1P, combining CRP and S1P had significantly higher AUC value for differentiating between the COPD with pneumonia group and the AECOPD group.

*Correspondence: bradhsu1980@tmu.edu.tw

¹ Emergency Department, Wan Fang Hospital, Taipei Medical University, Taipei, Taiwan

Full list of author information is available at the end of the article



© The Author(s) 2022. **Open Access** This article is licensed under a Creative Commons Attribution 4.0 International License, which permits use, sharing, adaptation, distribution and reproduction in any medium or format, as long as you give appropriate credit to the original author(s) and the source, provide a link to the Creative Commons licence, and indicate if changes were made. The images or other third party material in this article are included in the article's Creative Commons licence, unless indicated otherwise in a credit line to the material. If material is not included in the article's Creative Commons licence and your intended use is not permitted by statutory regulation or exceeds the permitted use, you will need to obtain permission directly from the copyright holder. To view a copy of this licence, visit <http://creativecommons.org/licenses/by/4.0/>. The Creative Commons Public Domain Dedication waiver (<http://creativecommons.org/publicdomain/zero/1.0/>) applies to the data made available in this article, unless otherwise stated in a credit line to the data.

Conclusions: Our findings suggest that S1P is a potential diagnostic biomarker in distinguishing COPD with CAP from AECOPD. Additionally, the diagnostic ability of S1P can be improved when used in combination with CRP.

Keywords: Sphingosine-1-phosphate, C-reactive protein, Pneumonia, Chronic obstructive pulmonary disease

Background

Chronic obstructive pulmonary disease (COPD) is characterized by persistent respiratory symptoms and airflow limitation that is due to airway abnormalities. COPD is a leading and increasingly important cause of morbidity and mortality worldwide and is projected to be the 3rd leading cause of death by 2020 [1]. Frequent acute exacerbations of COPD (AECOPD) would increase the hospitalization and mortality rates [2]. AECOPD can be caused by bacterial infection, viral infection, allergen, and air pollution, and up to fifty percent of exacerbations are caused by bacterial infection [3]. Community-acquired pneumonia is one of the most frequent infectious causes of death worldwide [4]. Despite the advancement in treatment and diagnostic techniques, the 30-day mortality rate of pneumonia is as high as 12.1% for patients 65 years of age and older admitted to hospital [5]. Moreover, pneumonia is considered to be one of the major causes of AECOPD.

An AECOPD is a worsening of symptoms such as cough, dyspnea, and sputum production. During AECOPD, the airways resistance is rapidly increased (due to bronchospasm, mucosal edema, and sputum inspissation), which worsens expiratory flow limitation (EFL). EFL is a pathophysiological hallmark of AECOPD [6]. In addition, EFL leads to lung overinflation and further causes the gas exchange problem in the lung. Due to similar signs and symptoms, it is very challenging to differentiate bacterial and non-bacterial induced AECOPDs, especially in an Emergency Department (ED) setting. Moreover, the use of conventional diagnostic markers, such as complete blood count (CBC) with differential and C-reactive protein, is the current mainstream method for differentiating clinically relevant CAP from AECOPD. However, for patients with a clinical suspicion of infection, those conventional methods have suboptimal sensitivity and specificity [7, 8]. The limitations often cause the ambiguity of the initiation of antibiotic treatment. As a result, unnecessary use of antibiotics adversely affects patients' outcomes. Also, inappropriate antibiotic therapy increases antibiotic resistance in patients, which poses a public health problem. Current strategies to reduce antibiotic usage have included the development of biomarker-directed treatment algorithms. However, a recent study suggested that procalcitonin-guided therapy has not been effective in reducing antibiotic use [9]. Therefore, developing new diagnostic biomarkers for

pneumonia may be the answer to the problems, especially for the COPD population.

C-reactive protein (CRP) has been widely used in pneumonia management [10]. CRP is a well-established biomarker of inflammation but has been considered as a non-specific marker in the pneumonia diagnosis [11], although it might have some values in defining pneumonia severity [12, 13]. Moreover, several meta-analyses have suggested that CRP performs no better than the pneumonia-specific scores in prognostic prediction [14, 15]. Sphingosine-1-phosphate (S1P) is a bioactive sphingolipid and is involved in several physiological processes, including immune responses and endothelial barrier integrity [16–21]. Additionally, our previous study suggested that S1P is a potential diagnostic, prognostic biomarker for the initial screening of patients with pneumonia [22]. In the study, we demonstrate that plasma S1P levels are significantly elevated and inversely correlated with disease severity in patients with pneumonia. Therefore, in the present study, we evaluated the value of S1P and CRP for discriminating COPD with pneumonia and AECOPD in an ED setting.

Methods

Patients

We conducted a prospective, single-center, observational study in the Emergency Department of Taipei Municipal Wanfang Hospital (Taipei, Taiwan) between October 2016 and February 2020. All recruited patients who presented to the ED have AECOPDs with suspected pneumonia. Before enrollment, the patients were provided with written informed consent. The inclusion criteria were: age \geq 20 years with previously diagnosed COPD and suspected diagnosis of pneumonia as defined by the Infectious Disease Society of America (IDSA)/American Thoracic Society (ATS) Consensus Guideline or the patient with AECOPD. For the COPD diagnosis, we followed the GOLD guideline. The follow-up or the admitting pulmonologists provided the final diagnosis. The diagnosis criteria of pneumonia were based on the American Thoracic Society/Infectious Diseases Society of America Community-Acquired Pneumonia Guideline. The patient who had pneumonia in the previous 30 days, active tuberculosis, aspiration pneumonia, immune-deficiency (due to HIV infection, prior transplantation, immunosuppressive therapy, or neoplasm), or the pregnancy was excluded from our study.

The peripheral blood was collected from the patients presenting at the emergency department (ED) of Wan Fang Hospital. The following parameters were recorded for each participant: sex, age, body weight, body temperature, vital signs at the ED, and clinical characteristics of the disease. The laboratory testing includes baseline analyses and CRP. For the patients with pneumonia, the pneumonia severity index (PSI) [23] and CURB-65 [24] were also calculated.

Measurement of sphingosine-1-phosphate

The peripheral blood samples were stored in tubes containing EDTA. The samples were centrifuged at 2500×g for 10 min, and the upper plasma layers were collected. The samples were then frozen at - 80 °C for storage. A commercially available enzyme-linked immunosorbent assay (ELISA) kit (MyBiosource) was used for plasma S1P concentration measurements.

Statistical analysis

Statistical analysis was performed with the R 3.6.1 software (R Foundation for Statistical Computing, Vienna, Austria). Based on the previous study [25] and our initial pilot study, we assumed a 20 ng/ml difference in serum S1P with a standard deviation of 30 ng/ml. A sample size of 44 per group (88 total) will be sufficient to detect a between-group difference, assuming a power of 90%, alpha of 5%. The data were presented median and interquartile range or mean and standard deviation (SD). The categorical variables are expressed as counts or percentages. Youden indexes were used to determine the optimal cut-off value on a receiver operating characteristic (ROC) curve. In terms of areas under two ROC curves comparison, the empirical (nonparametric) methods were used [26]. The degree of association between variables was measured by the Spearman rank correlation test. In the comparison between groups, the Mann–Whitney U-test was used. Statistical tests were two-sided, and $p < 0.05$ was accepted as statistically significant.

Results

Characteristics of the Study Population

A total of 127 patients (AECOPD: 49 and COPD with pneumonia: 78) were recruited in this study. Based on the GOLD guidelines, the AECOPD severity of the patients in our population is defined as severe. The baseline characteristics of the patients are shown in Table 1. No difference was found between the two groups in age, gender, hospital mortality, and comorbidities. However, COPD patients with pneumonia had higher hospital admission rates and ICU admission rates. The pneumonia severity index and CURB-65 were used for pneumonia severity assessment.

Table 1 Demographic and baseline characteristics of patients and disease status

	AECOPD	COPD with CAP	p-value
Participants, n	49	78	–
Mean age (SD), year	72.6 (15.7)	76.3 (12.4)	0.15
Male/female (%), n	30/19 (61.2%)	46/32 (58.9%)	0.97
Admission (%), n	39 (79.6%)	75 (96.2%)	< 0.01
ICU admission (%), n	2 (4.1%)	14 (17.9%)	< 0.05
Hospital mortality (%), n	1 (2.0%)	5 (6.4%)	0.41
Comorbidities			
Hypertension (%), n	23 (46.9%)	35 (44.9%)	0.96
Diabetes mellitus (%), n	16 (32.7%)	20 (25.6%)	0.69
PSI			
≤ 90	–	18 (23.0%)	–
91–130	–	45 (57.7%)	–
> 130	–	15 (19.3%)	–
CURB-65			
0–1	–	42 (53.8%)	–
2	–	24 (30.8%)	–
3–5	–	12 (15.4%)	–

Biomarkers levels

Levels of S1P ranged from 1.1 to 173.7 ng/ml. S1P concentration was significantly higher in COPD with pneumonia group (Median: 28.8, IQR: 45.6–17.2) compared to AECOPD group (Median: 5.9, IQR: 13.0–2.7) ($p < 0.001$; Fig. 1a). Concentrations of CRP ranged from 0.1 to 23.6 mg/dl. The COPD patient with pneumonia (Median: 6.7, IQR: 23.6–2.4) presented significantly higher CRP levels than those in patient with AECOPD (Median: 0.9, IQR: 9.1–0.2) ($p < 0.001$; Fig. 1b). In the univariate logistic regression analysis, S1P concentration was predictive of pneumonia with odds ratio of 1.27 (95% CI: 1.17–1.41; $p < 0.0001$) and CRP levels was predictive of pneumonia with odds ratio of 1.59 (95% CI: 1.35–1.99, 1.43–3.51 $p < 0.0001$). In terms of the multivariate logistic regression analysis, S1P (OR: 2.00, 95% IC: $p < 0.005$) and CRP (OR: 2.68, 95% IC: 1.71–5.77, $p < 0.001$) were significant factors in differentiating between the COPD with pneumonia group and the AECOPD group. Moreover, there was significant correlations between the level of S1P and CRP ($\rho = 0.312$, $p < 0.001$). For the full panel of the univariate and multivariate logistic regression analysis, the results were shown in Table 2.

Diagnostic performance of the biomarkers

We assessed the discriminatory power of the biomarkers in differentiating between the COPD with pneumonia group and the AECOPD group by using ROC curve analysis. In the ROC analysis, the area under the curve in roc curve

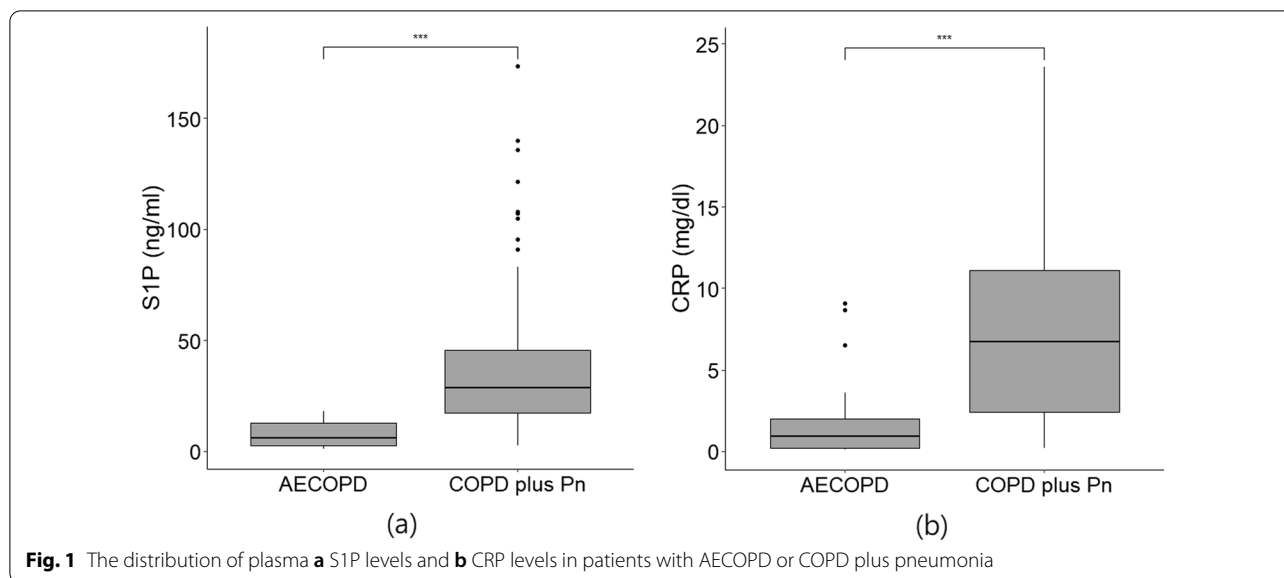
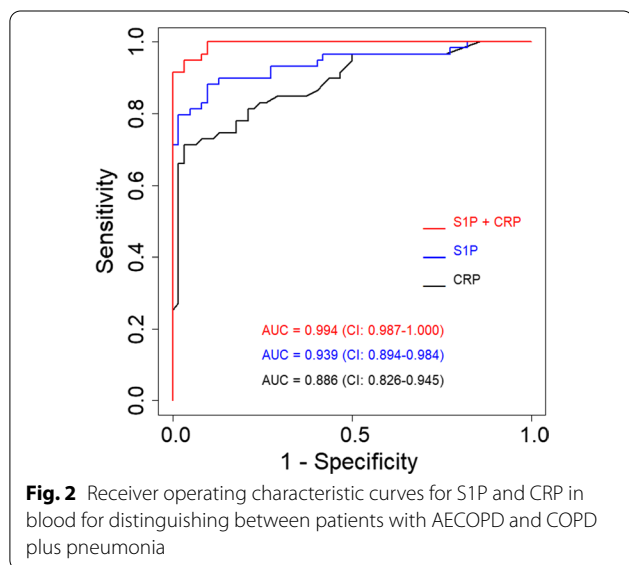


Table 2 Diagnostic performance of S1P level and CRP level for pneumonia in univariate and multivariate logistic regression analysis

Biomarkers	Univariate analysis			Multivariate analysis		
	OR	CI (95%)	p-value	OR	CI (95%)	p-value
S1P	1.27	1.17–1.41	>0.0001	2.00	1.43–3.51	>0.005
CRP	1.59	1.35–1.99	>0.0001	2.68	1.71–5.77	>0.001



was 0.939 (95% CI: 0.894–0.984) for S1P and 0.886 (95% CI: 0.826–0.945) for CRP (Fig. 2). For S1P, a cut-off value of 16.9 ng/ml yielded a sensitivity of 76.92% and specificity of 97.96%. For CRP, A cut-off value of 3.5 mg/dl yielded a sensitivity of 71.79% and specificity of 91.84% (Table 3). There

Table 3 Comparing different methods for predicting patient diagnosis status

	Sensitivity (%)	Specificity (%)	PPV (%)	NPV (%)
S1P > 16.9	76.92	97.96	98.36	72.73
CRP > 3.5	71.79	91.84	93.33	67.16
S1P > 16.9 or CRP > 3.5	98.72	89.80	93.90	97.78

PPV positive predictive value, NPV negative predictive value

were no statistically significant differences between S1P and CRP in separating the COPD with pneumonia group from the AECOPD group ($p=0.254$). By combining S1P and CRP, the area under the curve in ROC curve increased to 0.994 (95% CI: 0.897–1.000) (Fig. 2). By comparing with CRP or S1P, combining CRP and S1P had significantly higher AUC value for differentiating between the COPD with pneumonia group and the AECOPD group ($p < 0.001$ and $p < 0.005$, respectively).

Discussion

Since acute exacerbations and pneumonia present with similar signs and symptoms in the patient with COPD, it is challenging to distinguish them early in an emergency

room setting. The problem not only results in misdiagnosis but also inappropriate usage of antibiotics [27, 28]. The Global Initiative for Chronic Obstructive Lung Disease (GOLD) strategy documents suggest that antibiotics usage should be based on clinical signs of infection, blood CRP level, and blood procalcitonin level. However, in clinical use, the method is still suboptimal. Therefore, we tried to develop a new strategy for differentiating pneumonia from acute exacerbation in the COPD population. This study demonstrates that COPD patients with pneumonia presented significantly higher blood CRP level and higher blood S1P compared to patients with AECOPD. There was a weak correlation ($\rho=0.312$) between S1P and CRP concentrations, and both biomarkers have acceptable diagnostic accuracy (measured as AUC). Further, the multivariate logistic regression analysis suggested both S1P and CRP are independent predictors for COPD patients with pneumonia. Moreover, by combining the biomarkers, diagnostic accuracy was significantly increased with excellent sensitivity and specificity.

CRP is an acute-phase protein synthesized in the liver. The serum CRP concentration increases during infections, especially in bacterial infections. A previous study suggested CRP is the most selective biomarker in the diagnosis of AECOPD with insufficient specificity and sensitivity [29]. The following research demonstrated that, unlike procalcitonin, CRP is associated with airway bacterial presence and the treatment effect of antibiotics in AECOPD patients increases with higher values of CRP [30]. Current researches also included CRP as a biomarker for pneumonia in COPD patients, and they reported acceptable diagnostic accuracy (AUC from 0.63 to 0.84) [31, 32]. S1P has been suggested involved in acute lung injury and sepsis [33–35]. A previous study also indicated that lower serum-S1P levels are associated with severe sepsis and septic shock [25]. Moreover, our previous study demonstrated that blood S1P concentrations are inversely associated with pneumonia severity [22]. Therefore, when we use only S1P for discriminating between pneumonia and acute exacerbation in COPD patients, the patient with severe pneumonia would easily be missed. Due to severe bacterial infection status, the CRP level is usually very high in patients with severe pneumonia. As a result, by combining S1P and CRP, we obtained a significantly higher diagnostic accuracy for the diagnosis of pneumonia in a patient with COPD in the emergency room setting.

There are several studies trying to identify new biomarkers for distinguishing between pneumonia and AECOPD. Pizzini et al. demonstrated that the level of pteridine neopterin (NPT), a marker for immune system activation, is higher in pneumonia patients compared to

AECOPD patients. They further suggested utilizing CRP/NPT ratio in serum to discriminate pneumonia from AECOPD in COPD patients [36]. Bertrams et al. discovered a panel of genes in PBMCs that were differentially expressed between pneumonia and AECOPD patients and found several microRNAs, which separated pneumonia and AECOPD. They further identified HNF4A, MCC, and MUC1 as the most important discriminatory markers [37]. Recently, small extracellular vesicles (sEVs) were also suggested to be used as biomarkers for discriminating between CAP and AECOPD [38]. The sEVs are membrane-contained released from most cell types and can be found in blood [39]. In that study, the authors identified a panel of surface proteins of plasma sEVs as biomarkers for the differentiation of pneumonia and AECOPD. Here, in our study, we identified a new potential biomarker, S1P, for the diagnosis of pneumonia in COPD patients.

Our study has a few limitations. First, this is a single-center with a relatively small sample size study, and the patients were heterogeneous in terms of clinical severity of their AECOPD or pneumonia. Our research focus of the pilot study was to discover the biomarkers for distinguishing between pneumonia and AECOPD. The study lacks an independent validation cohort. Further studies with larger patient numbers and an independent validation cohort will be necessary to confirm our observations. Also, the information of the detailed treatment and clinical history was not obtained in the study. The S1P and CRP were measured only once at a single time point during screening. Thus, the information of reproducibility and concentration change during the time course of the biomarkers is missing. Furthermore, in terms of patient selection, the participants were recruited from the emergency room and usually had a more serious exacerbation episode. As a result, the results cannot be extrapolated to the COPD population as a whole.

Conclusions

The blood S1P was significantly higher in patients with COPD plus CAP than those in patients with AECOPD. The S1P also has a reasonable specificity and positive predictive value in the diagnosis of pneumonia in a patient with COPD. Thus, our findings suggest that S1P is a potential diagnostic biomarker for CAP, especially in distinguishing COPD with CAP from AE COPD. Moreover, the diagnostic ability can be improved when used in combination with CRP.

Abbreviations

COPD: Chronic obstructive pulmonary disease; AECOPD: Acute exacerbations of COPD; CRP: C-reactive protein; S1P: Sphingosine-1-phosphate; ED: Emergency Department.

Acknowledgements

Not applicable.

Authors' contributions

Concept and design: SCH, CWS, CWH; Clinical sample and data acquisition: SCH, JHC, YPH, CTL; Statistical analysis: SCH, CTL; Analysis and interpretation: SCH, JHC, YPH, CWH; Drafting the manuscript: SCH, SKH, CWH; Administrative, technical, or material support: SKH, CWH; Critical revision of the manuscript for important intellectual content: SCH, CWH. All authors read and approved the final manuscript.

Funding

This work was supported by the Taipei Medical University [grant number: 109-wf-swf-03 and 107-wf-swf-06], Taiwan and, in part, by National Health Research Institutes [EM110-PP-10], Taiwan.

Availability of data and materials

The datasets used and/or analyzed during the current study are available from the corresponding author on reasonable request.

Declarations**Ethics approval and consent to participate**

The study was conducted according to the guidelines of the Declaration of Helsinki and approved by Association of Taipei Medical University Joint Institutional Review Board (TMU-JIRB NO: N201602089).

Consent for publication

Not applicable.

Competing interests

The authors declare no conflict of interest.

Author details

¹Emergency Department, Wan Fang Hospital, Taipei Medical University, Taipei, Taiwan. ²Department of Emergency, School of Medicine, College of Medicine, Taipei Medical University, Taipei, Taiwan. ³Division of Pulmonary Medicine, Department of Internal Medicine, Wan Fang Hospital, Taipei Medical University, Taipei, Taiwan. ⁴Graduate Institute of Clinical Medicine, College of Medicine, Taipei Medical University, Taipei, Taiwan. ⁵School of Respiratory Therapy, College of Medicine, Taipei Medical University, Taipei, Taiwan. ⁶Division of Nephrology, Department of Internal Medicine, Wan Fang Hospital, Taipei Medical University, Taipei, Taiwan. ⁷Department of Internal Medicine, School of Medicine, College of Medicine, Taipei Medical University, Taipei, Taiwan. ⁸National Institute of Environmental Health Sciences, National Health Research Institutes, Zhunan, Taiwan. ⁹Lou-Hu Hospital, Shen-Zhen University, Shen-Zhen, China. ¹⁰Research Center for Environmental Medicine, Kaohsiung Medical University, Kaohsiung, Taiwan. ¹¹Johns Hopkins Asthma and Allergy Center, Johns Hopkins University School of Medicine, Baltimore, USA.

Received: 10 September 2021 Accepted: 12 March 2022

Published online: 20 March 2022

References

- Global Initiative for Chronic Obstructive Lung Disease. Global Strategy for the Diagnosis, Management, and Prevention of COPD 2017 Report. 2017. <http://goldcopd.org>.
- Wedzicha JA, Seemungal TA. COPD exacerbations: defining their cause and prevention. *Lancet*. 2007;370:786–96.
- Sethi S, Murphy TF. Infection in the pathogenesis and course of chronic obstructive pulmonary disease. *N Engl J Med*. 2008. <https://doi.org/10.1056/NEJMr0800353>.
- Lozano R, Naghavi M, Foreman K, Lim S, Shibuya K, Aboyans V, et al. Global and regional mortality from 235 causes of death for 20 age groups in 1990 and 2010: a systematic analysis for the Global Burden of Disease Study 2010. *Lancet*. 2012;380:2095–128.
- Metersky ML, Waterer G, Nsa W, Bratzler DW. Predictors of in-hospital vs postdischarge mortality in pneumonia. *Chest*. 2012;142:476–81. <https://doi.org/10.1378/chest.11-2393>.
- O'Donnell DE, Parker CM. COPD exacerbations. 3: Pathophysiology. *Thorax*. 2006;61:354.
- Hausfater P. Biomarkers and infection in the emergency unit. *Med Mal Infect*. 2014;44:139–45.
- Mitsuma SF, Mansour MK, Dekker JP, Kim J, Rahman MZ, Tweed-Kent A, et al. Promising new assays and technologies for the diagnosis and management of infectious diseases. *Clin Infect Dis*. 2013;56:996–1002.
- Lindenauer PK, Shieh M-S, Stefan MS, Fisher KA, Haessler SD, Pekow PS, et al. Hospital procalcitonin testing and antibiotic treatment of patients admitted for COPD Exacerbation. *Ann Am Thorac Soc*. 2017. 201702–133OC. <http://www.ncbi.nlm.nih.gov/pubmed/28795838>. Accessed 2 Sep 2017.
- Khan F, Owens MB, Restrepo M, Povoja P, Martin-Loeches I. Tools for outcome prediction in patients with community acquired pneumonia. *Expert Rev Clin Pharmacol*. 2017;10:201–11.
- Bolat kale M, Duger M, Ülfer G, Can Ç, Acara AC, Yiğitbaşı T, et al. A novel biochemical marker for community-acquired pneumonia: Ischemia-modified albumin. *Am J Emerg Med*. 2017;35:1121–5.
- Chalmers JD, Singanayagam A, Hill AT. C-reactive protein is an independent predictor of severity in community-acquired pneumonia. *Am J Med*. 2008;121:219–25.
- García Vázquez E, Martínez JA, Mensa J, Sánchez F, Marcos MA, deRoux A, et al. C-reactive protein levels in community-acquired pneumonia. *Eur Respir J*. 2003;21:702–5.
- Viasus D, DelRio-Pertuz G, Simonetti AF, Garcia-Vidal C, Acosta-Reyes J, Garavito A, et al. Biomarkers for predicting short-term mortality in community-acquired pneumonia: a systematic review and meta-analysis. *J Infect*. 2016;72:273–82.
- Viasus D, Simonetti A, Garcia-Vidal C, Carratalà J. Prediction of prognosis by markers in community-acquired pneumonia. *Expert Rev Anti Infect Therapy*. 2013;11:917–29. <https://doi.org/10.1586/14787210.2013.825442>.
- Pappu R, Schwab SR, Cornelissen I, Pereira JP, Regard JB, Xu Y, et al. Promotion of lymphocyte egress into blood and lymph by distinct sources of sphingosine-1-phosphate. *Science*. 2007;316:295–8. <https://doi.org/10.1126/science.1139221>.
- Rivera J, Proia RL, Olivera A. The alliance of sphingosine-1-phosphate and its receptors in immunity. *Nat Rev Immunol*. 2008;8:753–63. <https://doi.org/10.1038/nri2400>.
- Schuchardt M, Tölle M, Prüfer J, van der Giet M. Pharmacological relevance and potential of sphingosine 1-phosphate in the vascular system. *Br J Pharmacol*. 2011;163:1140–62.
- Xiong Y, Hla T. S1P control of endothelial integrity. *Curr Top Microbiol Immunol*. 2014;378:85–105.
- Florey O, Haskard DO. Sphingosine 1-phosphate enhances Fc receptor-mediated neutrophil activation and recruitment under flow conditions. *J Immunol*. 2009;183:2330–6.
- Ratajczak MZ, Borkowska S, Ratajczak J. An emerging link in stem cell mobilization between activation of the complement cascade and the chemotactic gradient of sphingosine-1-phosphate. *Prostaglandins Other Lipid Mediat*. 2013;104:122–9.
- Hsu SC, Chang JH, Hsu YP, Bai KJ, Huang SK, Hsu CW. Circulating sphingosine-1-phosphate as a prognostic biomarker for community-acquired pneumonia. *PLoS ONE*. 2019;14:1–13. <https://doi.org/10.1371/journal.pone.0216963>.
- Rule P, Identify TO, With LP, Pneumonia C-A, Fine MJ, Auble TE, et al. A prediction rule to identify low-risk patients with community-acquired pneumonia. *N Engl J Med*. 1997;336:243–50. Available from: <http://www.ncbi.nlm.nih.gov/pubmed/8995086>.
- Lim WS, van der Eerden MM, Laing R, Boersma WG, Karalus N, Town GI, et al. Defining community acquired pneumonia severity on presentation to hospital: an international derivation and validation study. *Thorax*. 2003;58:377–82.
- Winkler MS, Nierhaus A, Holzmann M, Mundersbach E, Bauer A, Robbe L, et al. Decreased serum concentrations of sphingosine-1-phosphate in sepsis. *Crit Care*. 2015. <https://doi.org/10.1186/s13054-015-1089-0>.
- DeLong ER, DeLong DM, Clarke-Pearson DL. Comparing the areas under two or more correlated receiver operating characteristic curves: a non-parametric approach. *Biometrics*. 1988;44:837.

27. Varol Y, Karakurt Z, Çirak AKK, Şahin HDD, Kıraklı C, Kömürçüoğlu B. Inappropriate utilization of antibiotics in COPD exacerbations. *Turk Thorac J*. 2020;21:397.
28. Finney LJJ, Padmanaban V, Todd S, Ahmed N, Elkin SL, Mallia P. Validity of the diagnosis of pneumonia in hospitalised patients with COPD. *ERJ Open Res*. 2019;5:00031–2019.
29. Hurst JR, Donaldson GC, Perera WR, Wilkinson TM, Bilello JA, Hagan GW, et al. Use of plasma biomarkers at exacerbation of chronic obstructive pulmonary disease. *Am J Respir Crit Care Med*. 2006;174:867–74.
30. Daniels JM, Schoorl M, Snijders D, Knol DL, Lutter R, Jansen HM, Boersma WG. Procalcitonin vs C-reactive protein as predictive markers of response to antibiotic therapy in acute exacerbations of COPD. *Chest*. 2010;138(5):1108–15. <https://doi.org/10.1378/chest.09-2927>.
31. Çolak A, Yılmaz C, Toprak B, Aktoğlu S. Procalcitonin and CRP as biomarkers in discrimination of community-acquired pneumonia and exacerbation of COPD. *J Med Biochem*. 2017;36:122–6.
32. Titova E, Christensen A, Henriksen AH, Steinshamn S, Åsberg A. Comparison of procalcitonin, C-reactive protein, white blood cell count and clinical status in diagnosing pneumonia in patients hospitalized with acute exacerbations of COPD: a prospective observational study. *Chronic Respir Dis*. 2018;16:147997231876976. <https://doi.org/10.1177/1479972318769762>.
33. Ebenezer DL, Fu P, Suryadevara V, Zhao Y, Natarajan V. Epigenetic regulation of pro-inflammatory cytokine secretion by sphingosine 1-phosphate (S1P) in acute lung injury: role of S1P lyase. *Adv Biol Regul*. 2017;63:156–66. <https://doi.org/10.1016/j.jbior.2016.09.007>.
34. Wadgaonkar R, Patel V, Grinkina N, Romano C, Liu J, Zhao Y, et al. Differential regulation of sphingosine kinases 1 and 2 in lung injury. *Am J Physiol Lung Cell Mol Physiol*. 2009;296:L603–13. <https://doi.org/10.1152/ajplung.90357.2008>.
35. Feng A, Rice AD, Zhang Y, Kelly GT, Zhou T, Wang T. S1PR1-associated molecular signature predicts survival in patients with sepsis. *Shock*. 2020;53(3):284–92. <https://doi.org/10.1097/SHK.0000000000001376>.
36. Pizzini A, Lunger F, Sahanic A, Nemati N, Fuchs D, Weiss G, Kurz K, Bellmann-Weiler R. Diagnostic and prognostic value of inflammatory parameters including neopterin in the setting of pneumonia, COPD, and acute exacerbations. *COPD J Chronic Obstr Pulm Dis*. 2017;14(3):298–303. <https://doi.org/10.1080/15412555.2016.1266317>.
37. Bertrams W, Griss K, Han M, Seidel K, Klemmer A, Sittka-Stark A, Hippenstiel S, Suttrop N, Finkernagel F, Wilhelm J, Greulich T, Vogelmeier CF, Vera J, Schmeck B. Transcriptional analysis identifies potential biomarkers and molecular regulators in pneumonia and COPD exacerbation. *Sci Rep*. 2020. <https://doi.org/10.1038/s41598-019-57108-0>.
38. Jung AL, Jørgensen MM, Bæk R, Griss K, Han M, Brinke KAD, et al. Surface proteome of plasma extracellular vesicles as biomarkers for pneumonia and acute exacerbation of chronic obstructive pulmonary disease. *J Infect Dis J Infect Dis*. 2020;221:325–35.
39. Yáñez-Mó M, Siljander PR, Andreu Z, Zavec AB, Borràs FE, Buzas EI, et al. Biological properties of extracellular vesicles and their physiological functions. *J Extracell vesicles*. 2015;4:1–60.

Publisher's Note

Springer Nature remains neutral with regard to jurisdictional claims in published maps and institutional affiliations.

Ready to submit your research? Choose BMC and benefit from:

- fast, convenient online submission
- thorough peer review by experienced researchers in your field
- rapid publication on acceptance
- support for research data, including large and complex data types
- gold Open Access which fosters wider collaboration and increased citations
- maximum visibility for your research: over 100M website views per year

At BMC, research is always in progress.

Learn more biomedcentral.com/submissions

