



# Caribbean *Bulimulus* revisited: physical moves and molecular traces (Mollusca, Gastropoda, Bulimulidae)

Abraham S.H. Breure

Naturalis Biodiversity Center, Leiden, Netherlands  
Royal Belgian Institute of Natural Sciences, Brussels, Belgium

## ABSTRACT

Twenty-five samples of *Bulimulus* species are studied, partly from localities within their known distribution range, partly based on interceptions where the material originates from localities where the species seem to be recently introduced and non-native. Molecular study of cytochrome oxidase 1 (CO1) reveals the origin of some of these introductions, but is less conclusive for others. Four different methods for species delimitation were applied, which did not result in unambiguous species hypotheses. For a rapid identification of morphologically indistinct species, a more comprehensive database of sequences is needed.

**Subjects** Biogeography, Molecular Biology, Taxonomy, Zoology

**Keywords** Orthalicoidea, Distribution, Central America, Ecuador, West Indies, Florida, Alien species, Phylogenetics

## INTRODUCTION

The genus *Bulimulus* is widespread in the Caribbean region, and on the mainland of Central America; also a number of species do occur in dispersed regions of South America (*Breure, 1974; Breure & Borrero, 2008; Linares & Vera, 2012; Cuezco, Miranda & Constanza Ovando, 2013; Ramírez, Paredes & Arenas, 2003; Simone, 2006; Thompson, 2011*). *Breure (1974)* presented a revision of the Caribbean species, with a key to species, based on external shell morphology only. One of the most common species, *Bulimulus guadalupensis* (Bruguière, 1789), was reported then mainly from the Windward Group and supposedly imported on Jamaica, and Hispaniola. Shortly afterwards it was reported as being introduced on Curaçao (*Breure, 1975*). This very variable species, however, did not show infraspecific differentiation using measurements of the shells (*Breure, 1974: 21*). Another Caribbean species, *B. diaphanus* (Pfeiffer, 1855), was divided into two subspecies ranging from Hispaniola to St. Croix, and from St. Martin to Iles des Saintes, respectively (*Breure, 1974*). Anatomical data of *Bulimulus* species are scarce (*Breure, 1978; Miquel, 1991*) and mainly concern the mainland species. Molecular data has become available during the past decades, the most extensive treatment of this genus by *Breure & Romero (2012)* provides seven sequences, of which five are from the Caribbean. In order to obtain more insight in phylogenetic relations and zoogeographical patterns, additional molecular data from *Bulimulus* species throughout the distribution range are needed. In recent years reports of introduced *Bulimulus* taxa throughout the Caribbean and in the USA have increased (D Robinson, pers. comm., 2014). The author

Submitted 3 February 2016

Accepted 2 March 2016

Published 29 March 2016

Corresponding author  
Abraham S.H. Breure,  
ashbreure@gmail.com

Academic editor  
James Reimer

Additional Information and  
Declarations can be found on  
page 14

DOI 10.7717/peerj.1836

© Copyright  
2016 Breure

Distributed under  
Creative Commons CC-BY 4.0

OPEN ACCESS

frequently received photographs of *Bulimulus* species for identification. Species of this genus—for which more than 100 names are available ([Breure, 1979](#))—typically possess few reliable external characters, and are thus difficult to recognise from a photograph alone. Most of the photographs were from material captured by the US Dept of Agriculture (USDA) at border sites, which were considered alien species, often with unclear provenance. Moreover, some Florida populations of *Bulimulus* have not been well documented as yet.

The aim of this paper is provide additional molecular and occurrence data on Caribbean (sensu lato, incl. Florida) *B. guadalupensis* and *B. diaphanus*, and to test whether recent imports of *Bulimulus* species in the USA can be traced back to a South American origin. A second aim is to test whether different species delimitation methods may be helpful to untangle morphologically very similar species (cf. [Prévot et al., 2013](#)).

## MATERIAL AND METHODS

Intercepted or collected material of *Bulimulus* species was received originating from Argentina, Bahamas, Barbados, Colombia, Dominica, Dominican Republic, Ecuador, Guadeloupe, Haiti, Honduras, Jamaica, Paraguay, St. Kitts and Nevis, and the USA. Collection data, accession numbers for museum vouchers and GenBank accession numbers of all sequenced material are listed in [Table 1](#). All tissue samples were taken from snail feet and transferred to 96% ethanol. Whole genomic DNA was extracted with DNeasy kit (Quiagen Inc.) following the manufacturer's protocol. Fragments of mitochondrial cytochrome oxidase 1 (CO1) were amplified using the Folmer primers ([Folmer et al., 1994](#)), as described in [Breure & Romero \(2012\)](#). New sequences obtained during the present study are indicated in [Table 1](#). Sequences were aligned using MAFFT as implemented in Geneious 7.1.3 (Biomatters Ltd.). The substitution model selected by jModeltest 2.1 ([Posada, 2008](#)), using the Akaike Information Criterion, was GTR+ I+ G.

Phylogenetic trees were inferred by application of Neighbor-Joining (NJ), Maximum Likelihood (ML), Maximum Parsimony (MP), and Bayesian Inference (BI) methods. NJ trees were constructed using MEGA6 ([Tamura et al., 2013](#)) with Kimura 2-parameter (K2P) and 500 bootstrap replicates. ML trees were inferred using PhyML 3.0 ([Guindon et al., 2010](#)), with four substitution rate categories considered, and gamma shape parameters, transition/transversion ratios, and nucleotide frequencies were estimated from the data. Nodal support of topologies was inferred by calculating aLRT statistics. MP trees were constructed using MEGA6 ([Tamura et al., 2013](#)), resulting in a most parsimonious tree with length = 906; the consistency index is 0.445100 for all parsimony-informative sites. The tree was obtained using Subtree-Pruning-Regrafting and 500 bootstraps. BI trees were constructed using MrBayes 3.2.2 ([Ronquist & Huelsenbeck, 2003](#)), based on a cold chain and three incrementally heated chains ( $T = 0.2$ ), running for 1,100,000 generations with a sample frequency of 200. The burn-in was 25% and the remaining trees were used for building a consensus tree and calculating the Bayesian posterior clade probabilities ([Larget & Simon, 1999](#)). Both ML and BI software were used as implemented in Geneious 7.1.3 (Biomatters Ltd.). All trees were rooted with an outgroup of *Drymaeus vexillum* (Broderip, 1832) and *Neopetraeus tessellatus* (Shuttleworth, 1854), for which sequences were retrieved

**Table 1** Material used in this paper.

| MOTU | LabID   | Species                 | Voucher              | Locality          | Collector(s)              | COI                                       |   |             |          |
|------|---------|-------------------------|----------------------|-------------------|---------------------------|---|---|-------------|----------|
| s1   | FL_1301 | Bulimulus sporadicus    | (d'Orbigny, 1835)    | RMNH.MOL. 336660  | USA Florida Nassau County | S Callahan                                | H.Lee& EW Cavin                                 | KP117235    |          |
|      | AR_1308 | Bulimulus gracilis      | (Hylton Scott, 1948) | IML-BD368         | Argentina Salta           | Sierra Colorada, Pala Pala                | E. Salas O.                                     | KP117237    |          |
| s2   | PA_1316 | Bulimulus sporadicus    | (d'Orbigny, 1835)    | RMNH.MOL. 336661  | Paraguay Concepcion       | Garay-Cue                                 | U. Drechsel                                     | KP117238    |          |
|      | CO_1414 | Bulimulus sp.           |                      | CMC-FJB78         | Colombia Magdalena        | Santa Marta, Corr. Gayra, Vereda Mosquito | FJ Borrero                                      | KP117236    |          |
| gA   | PR_1707 | Bulimulus guadalupensis | (Bruguiere 1789)     | USDA 110196       | Puerto Rico               | Huamaco                                   | Isla Vieques, Barrio Punta Arenas, Monte Pirata | DGRobinson  | KP117239 |
| gA   | PR_1708 | Bulimulus guadalupensis | (Bruguiere 1789)     | USDA 110199       | Puerto Rico               | Huamaco                                   | Isla Vieques, Barrio Florida                    | DGRobinson  | KP117249 |
| gA   | PR_1709 | Bulimulus guadalupensis | (Bruguiere 1789)     | USDA 110195       | Puerto Rico               | Bayamon                                   | Guayabo, Amelia Industrial Park                 | DGRobinson  | KP117246 |
| gA   |         | Bulimulus guadalupensis | (Bruguiere 1789)     | RMNH. MOL. 106983 | Dominican Republic        |   | Santo Domingo                                   | J. Grego    | JF514630 |
| gB   | DR_1710 | Bulimulus guadalupensis | (Bruguiere 1789)     | USDA 110201       | Dominican Republic        | Samana                                    | Las Terrenas                                    | DGRobinson  | KP117253 |
| gA   | DR_1711 | Bulimulus guadalupensis | (Bruguiere 1789)     | USDA 110197       | Dominican Republic        | Samana                                    | Come Pan  | DGRobinson  | KP117244 |
| gA   | DR_1712 | Bulimulus guadalupensis | (Bruguiere 1789)     | USDA 110198       | Dominican Republic        | Espailat                                  | La Cantera                                      | DGRobinson  | KP117241 |
| gA   | DR_1714 | Bulimulus guadalupensis | (Bruguiere 1789)     | USDA 110200       | Dominican Republic        |   | 4 km S Cabrera, on road Nagua-Cabrera           | DGRobinson  | KP117245 |
| gA   | FL_1717 | Bulimulus guadalupensis | (Bruguiere 1789)     | USDA 110208       | USA Florida               | Dade                                      | Miami, Coral Gables                             | DGRobinson  | KP117240 |
| gB   | BA_1720 | Bulimulus guadalupensis | (Bruguiere 1789)     | USDA 110207       | Barbados                  | St.Thomas                                 | Sandy Lane                                      | DGRobinson  | KP117250 |
| gA   | DO_1722 | Bulimulus guadalupensis | (Bruguiere 1789)     | USDA 100706       | Dominica                  | St.George                                 | Bellevue Chopin                                 | DGRobinson  | KP117242 |
| gA   | DO_1724 | Bulimulus guadalupensis | (Bruguiere 1789)     | USDA 100713       | Dominica                  | St. Luke                                  | Pointe Michel, Morne Lofty                      | DGRobinson  | KP117243 |
| gB   | GU_1725 | Bulimulus guadalupensis | (Bruguiere 1789)     | USDA 110209       | Guadeloupe                | Grande-Terre                              | Sainte-Anne                                     | DGRobinson  | KP117252 |
| gB   | JA_1727 | Bulimulus guadalupensis | (Bruguiere 1789)     | USDA 110194       | Jamaica                   | Hanover                                   | Lucea, western Lucea Harbor                     | DGRobinson  | KP117251 |
| gA   | EC_1728 | Bulimulus guadalupensis | (Bruguiere 1789)     | USDA 110210       | Ecuador                   |   | (USDA interception)                             | A Hansen    | KP117247 |
| gA   | HO_1729 | Bulimulus guadalupensis | (Bruguiere 1789)     | USDA 110162       | Honduras                  | ElParaiso                                 | Yuscaran, km 50 road Tegucigalpa-Danli          | H Deschamps | KP117248 |
| d1   |         | Bulimulus diaphanus     | (Pfeiffer, 1855)     | RMNH.MOL.114173   | Jamaica                   | St. Ann                                   | Runaway Bay                                     | DGRobinson  | KP117232 |
| d2   |         | Bulimulus diaphanus     | (Pfeiffer, 1855)     | RMNH.MOL.114174   | St. Kitts & Nevis         | Nevis                                     | Herbert Heights                                 | DGRobinson  | KP117233 |
| d1   |         | Bulimulus diaphanus     | (Pfeiffer, 1855)     | RMNH.MOL.114274   | Haiti                     |   | (USDA interception)                             | D. Valleso  | KP117231 |
| d3   |         | Bulimulus diaphanus     | (Pfeiffer, 1855)     | ANSP A22054       | Bahamas                   |   | (USDA interception)                             | G Watkins   | JF514633 |

**Notes.**

Abbreviations for vouchers: ANSP, Academy of Natural Sciences, Philadelphia, USA; CMC, Cincinnati Museum, Cincinnati, USA; IML, Instituto Miguel Lillo, Tucumán, Argentina; RMNH, Naturalis Biodiversity Center (NBC), Leiden, the Netherlands; UF, Florida Museum of Natural History, Gainesville, USA; USDA, United States Department of Agriculture, Malacology Collection, ANSP, Philadelphia, USA.

Other abbreviations: LabID, NBC molecular laboratorium code, including a two-letter locality code; MOTU, molecular operational taxonomic unit sensu (Blaxter, 2004).

from GenBank ([Breure & Romero, 2012](#)). Branch support was considered as well-supported if higher than 70 (bootstrapping: bs), resp. 0.9 (posterior probabilities: pp).

Evolutionary analysis of the original alignment was further explored by using SplitsTree4 v. 4.12.6 ([Huson & Bryant, 2006](#)). This program produces phylogenetic graphs with split networks; the K2P parameter was used in combination with the Neighbor-Net setting. Species delimitation was investigated using different methods, both with the original alignment and with a subset using only *B. guadalupensis*, *B. diaphanus*, and *B. sporadicus*: (1) Classical barcode gap analysis (BGA) using K2P-distances (a) 3% threshold, (b) 4% stylommatophoran threshold (both methods following [Prévot et al., 2013](#), who also cite references debating the use of K2P); (2) Species Delimiting as implemented in Geneious 7.1.3. (Biomatters Ltd.) (SDG); (3) Genealogical Sorting Index (GSI); (4) Automated Barcode Gap Discovery (ABGD).

BGA was explored using Estimates of Evolutionary Divergence between Sequences (EDS) and estimates of Net Evolutionary Divergence between Group of Sequences (NEDGS). These were conducted in MEGA6 ([Tamura et al., 2013](#)) by calculating the number of base substitutions per site from between sequences. Standard error estimate(s) were obtained by a bootstrap procedure (500 replicates). Analyses were conducted using the Maximum Composite Likelihood model ([Tamura, Nei & Kumar, 2004](#)). Codon positions included were 1st+2nd+3rd+ Noncoding and all positions containing gaps and missing data were eliminated, resulting in 585 positions in the final dataset analysed.

The SDG plug-in in Geneious v. 7.1.3 allows evaluating the phylogenetic exclusivity of each putative species interpreted as a clade by testing the probability that this exclusivity or monophyly has occurred by chance in a coalescent process. It further assesses the probability with which a putative species can be diagnosed successfully on a phylogenetic tree by comparing intra- and interspecific genetic distances and its ration. SDG calculates values of P ID(strict), i.e., the mean probability and its confidence interval of making a correct identification of an unknown specimen of a clade (not as sister of this clade) using placement on a tree ([Masters, Fan & Ross, 2011](#)). The method also calculates Rosenberg's  $P_{AB}$  ([Rosenberg, 2007](#)), a test for taxonomic distinctiveness based on the null hypothesis that monophyly is a chance outcome of random branching, and Rodrigo's P (Randomly Distinct) ([Rodrigo et al., 2007](#)), which is the probability that a clade has the observed degree of distinctiveness due to random coalescence.

The GSI method quantifies the historical relationships among groups of (putative) taxa by measuring the exclusive ancestry of a group using a rooted tree topology. A group is defined as a set of commonly labeled branch tips and exclusivity is the amount of ancestry for a group that is common to only members of the group, measured on a scale (the index), with a level of support ( $p$ -value). In the initial stages of divergence the values are at or near 0, at the final stages of genealogical sorting the values reach 1, representing exclusive ancestry (i.e., monophyly) ([Cummings, Neel & Shaw, 2008](#)).

The ABGD method sorts the sequences into hypothetical species based on the barcode gap, which can be observed whenever the divergence among organisms belonging to the same species is smaller than divergence among organisms from different species. ABGD uses a range of prior intraspecific divergence to infer from the data a model-based one-sided



confidence limit for intraspecific divergence. The method then detects the barcode gap as the first significant gap beyond this limit and uses it to partition the data. The aligned dataset was uploaded to the website (<http://www.abi.snv.jussieu.fr/public/abgd/abgdweb.html>) and run with K2P distances under default settings. These settings were a Prior Intraspecific divergence ranging from  $P_{min} = 0.001$  to  $P_{max} 0.1$  in ten steps, a relative gap width  $X = 1.5$ , and a distance distribution Nb bins = 20 (Puillandre et al., 2012).

## RESULTS

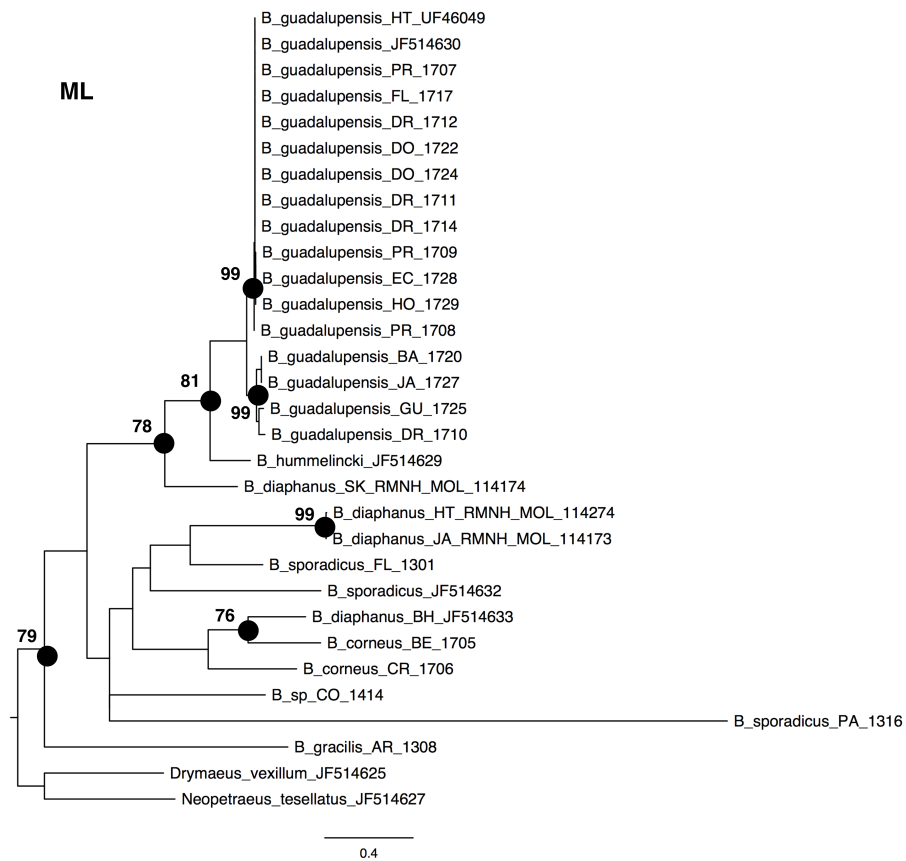
### Occurrence data

For the most common Caribbean *Bulimulus* species, *B. guadalupensis* (Bruguère, 1789), new introductions were newly traced back to the following Neotropical countries: Ecuador (USDA 110210), Costa Rica (USDA 110245), and Honduras (USDA 110162). All introductions were signaled via an ‘U-loop’, viz. the interception at USA-borders testified that the species was present in the country of departure of the flight or shipment concerned (in all cases no stop-overs were made). However, precise locations within those countries were difficult to pinpoint. Another new record for a population of this species was in Florida, Dade County, Miami, near Coconut Grove (USDA 110205-6), and near Coral Gables (USDA 110208), where specimens have been collected by D.G. Robinson, in respectively 1999 and 2010. The status of *B. guadalupensis* on Jamaica was confirmed as “introduced by humans” by (Rosenberg & Muratov (2006): 140); see also under Phylogenetic analyses.

Another introduction of *Bulimulus* in Florida concerns a species that was originally reported from Jacksonville by B. Frank and H. Lee in 2009 (H Lee, pers. comm., 2010). Because the original spot was near a container company, it was surmised to be an alien species from an unknown source area. Additional surveys in Jacksonville soon revealed that this then unidentified species was present in other spots as well and that its dispersal has taken place by rail. So far more than 20 populations have been discovered in and around Jacksonville along railroads, and far as 300 km as the crow flies SSW of Jacksonville. The species was identified by ANSP-USDA as *B. sporadicus* (d’Orbigny, 1835) (Frank & Lee, 2014), matching with specimens identified earlier as such from Houston, Texas (RMNH 114266) (D Robinson, pers. comm., 2014; Breure & Romero, 2012). This species is referred to in the present paper as *B. cf. sporadicus*, see ‘Discussion’.

### Phylogenetic analyses

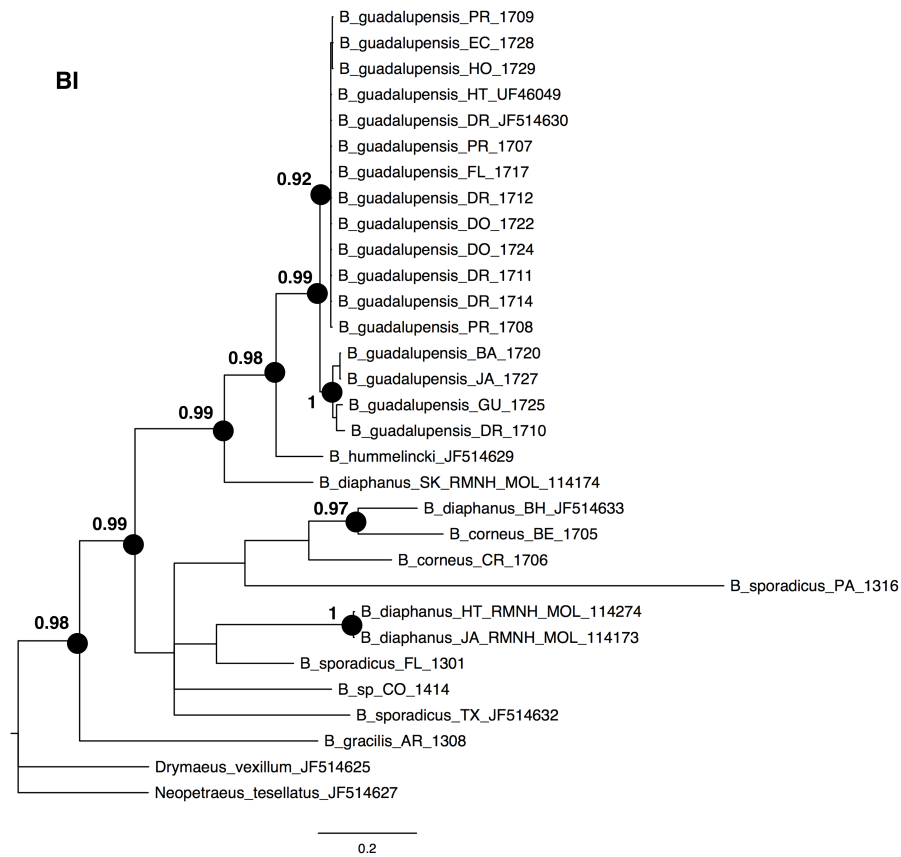
The NJ, ML and BI trees resulted in similar topologies (Figs. 1 and 2; NJ: Supplementary information Fig. 1). The 17 sequences of *B. guadalupensis* fell into two sister groups that were both well-supported (bs: 100 (NJ), (ML); pp: 1.0 and 0.92 respectively). The MP tree (Fig. S2) also supports the division of *B. guadalupensis* into two groups (bs: 99), and suggests that the Florida population is likely from a Puerto Rico or Hispaniola source population. In the MP tree the clade with sequences from Puerto Rico (Guayabo), Honduras and Ecuador had relatively strong support (bs: 87). *B. hummelincki* and *B. diaphanus* from St. Kitts appeared as paraphyletic in the same clade (bs: 71 (NJ), 78 (ML); pp: 0.99), which was sister group to all other *Bulimulus* species analysed in this study, except *B. gracilis*



**Figure 1** Maximum-likelihood phylogeny for *Bulimulus* species, based on 654 bp cytochrome oxidase I mitochondrial DNA. Bootstrap values of 70 and above are presented to the left of the nodes indicated by black dots. Scale bar in substitutions/site.

which was basally in all topologies. Within this second, weakly supported clade different topologies were seen, with polytomies in ML and BI. However, all methods suggest that *B. diaphanus* intercepted from the Bahamas is more closely related to the Central American *B. corneus* than to the other sequences of *B. diaphanus*. The latter are not a homogenous group, however, as the Nevis specimen was slightly different from the Jamaican/Haitian specimens.

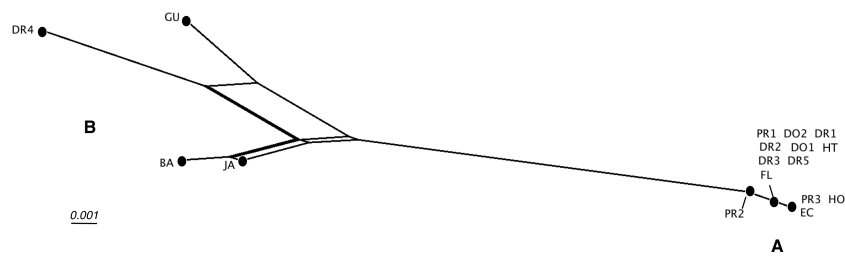
Detailed analysis of the alignment shows that *B. guadalupensis* sequences from the following populations can be arranged into two groups of haplotypes (h): (Group A) (h1) DR1—Dominican Republic, La Cantera (USDA 110198); DR2—Dominican Republic, 4 km S Cabrera (USDA 110200); DR3—Dominican Republic, Come Pan (USDA 110197); DR5—Dominican Republic, Santo Domingo (RMNH 106983); PR1—Puerto Rico, Isla Vieques, Punta Arenas (USDA 110196); DO1—Dominica, Bellevue Chopin (USDA 100706); DO2—Dominica, Pointe Michel (USDA 100713); FL — USA, Florida, Miami, Coral Gables (USDA 110208), with the second haplotype (h2) differing in only one basepair at the following populations: PR2—Puerto Rico, Isla Vieques, Florida (USDA 110199). A third haplotype (h3) links the populations at PR3—Puerto Rico, Guayabo (USDA 110195) and those in EC—Ecuador (USDA 110210) and HO—Honduras (USDA 110162);



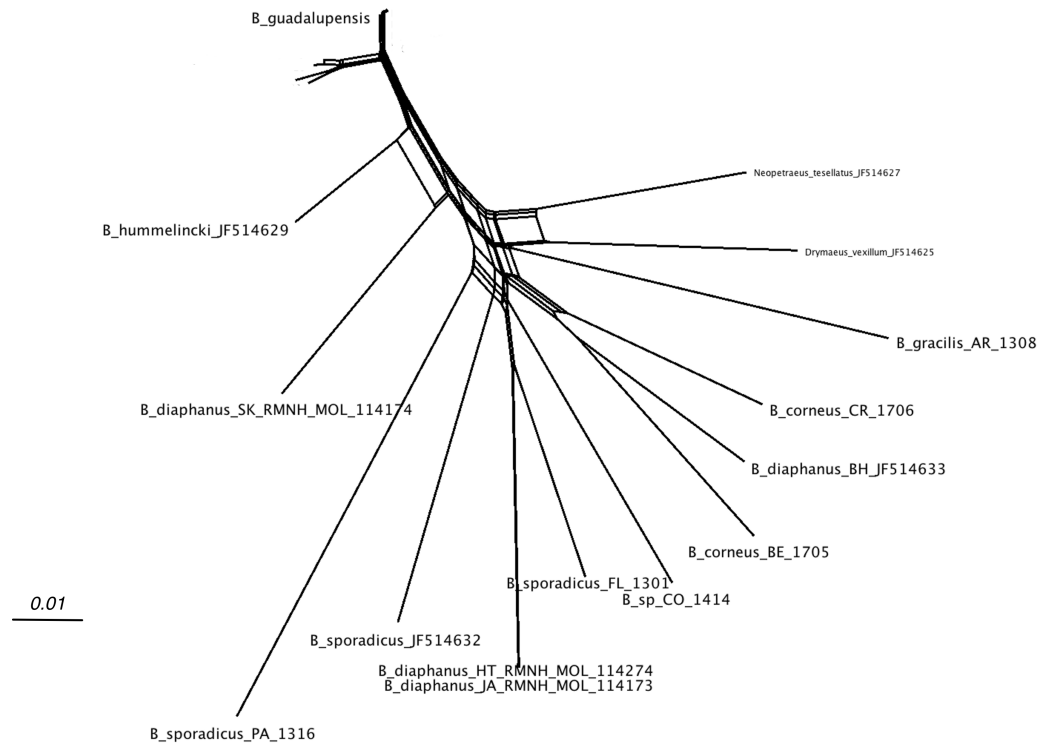
**Figure 2** Bayesian phylogeny for *Bulimulus* species using MrBayes, based on the same dataset as shown in Fig. 1. Posterior probabilities of 0.9 or above are indicated by black dots at the nodes. Scale bar in substitutions/site.

there is a two basepair difference with h2. Group B contains the following populations: (h4) GU—Guadeloupe, Saint-Anne (USDA 110209); (h5) DR4—Dominican Republic, Las Terrenas (USDA 110201, 11 bp differences with h4); (h6) BA—Barbados, Sandy Lane (USDA 110207, 15 bp differences with h5, 13 bp with h4). The sequence from JA—Jamaica, Lucea (USDA 110194), although incomplete, is likely nearly identical to those from Barbados. In SplitsTrees4 group A appears to be rather homogeneous, while group B is more variable (Fig. 3). This was reflected in the higher values for group B in the BGA, both in EDS and NEDGS (Table S4).

Figure 4 shows the network relations of the other species. *B. diaphanus* showed up in three different branches; the specimen from Nevis (RMNH.MOL.114174) was related to *B. hummelincki* (Breure, 1974) and corresponded to *B. diaphanus fraterculus* (Potiez & Michaud, 1835) (Breure, 1974). The specimens from Haiti (RMNH.MOL.114274) and Jamaica (RMNH.MOL.114173) were nearly identical, and correspond to *B. d. diaphanus* (Pfeiffer, 1855). The third sample from Bahamas (ANSP A22054) seemed to be more closely related to the Central American *B. corneus* (Sowerby I, 1833); this sample may have been misidentified. The three samples of *B. sporadicus* (d’Orbigny, 1835) appear to be partly unrelated; the specimens from Paraguay (RMNH.MOL.336661) and intercepted



**Figure 3** SplitsTree NeighborNet network of *Bulimulus guadalupensis* (Broderip, 1789), based on K2P distances and EqualAngle representation. Label explanation given in text.



**Figure 4** SplitsTree NeighborNet network of all *Bulimulus* species from the analysed dataset, based on K2P distances and EqualAngle representation. Label explanation given in text.

at Houston were on neighbouring branches (bootstrap 56; not shown). The sample from Florida (RMNH.MOL.336660), identified as the same species, was branching off *B. d. diaphanus* (bootstrap 86; not shown); this was corroborated in the MP tree, where the clade of *B. sporadicus* (Florida) and *B. diaphanus* (Haiti, Jamaica) had moderate support (bs: 72; not shown).

In the analyses using different species delimitation methods, the two groups within *B. guadalupensis* could be distinguished using BGA with a 3% threshold, while at 4% threshold the difference was only marginal. Haplotype h4 showed a maximum distance of  $0.041 \pm 0.008$ . In the SDG method using ML the B group had a relatively high intraspecific/interspecific ratio, but a relatively low P ID(strict) and non-significant

**Table 2** Number of putative species delimited by different methods applied to the dataset. d, *Bulimulus diaphanus*; g, *B. guadalupensis*; s, *B. sporadicus*; BGA, Barcode gap analysis; SDG, species delimiting in Geneious; ABGD, Automated barcode gap discovery; GSI, Genealogical sorting index.

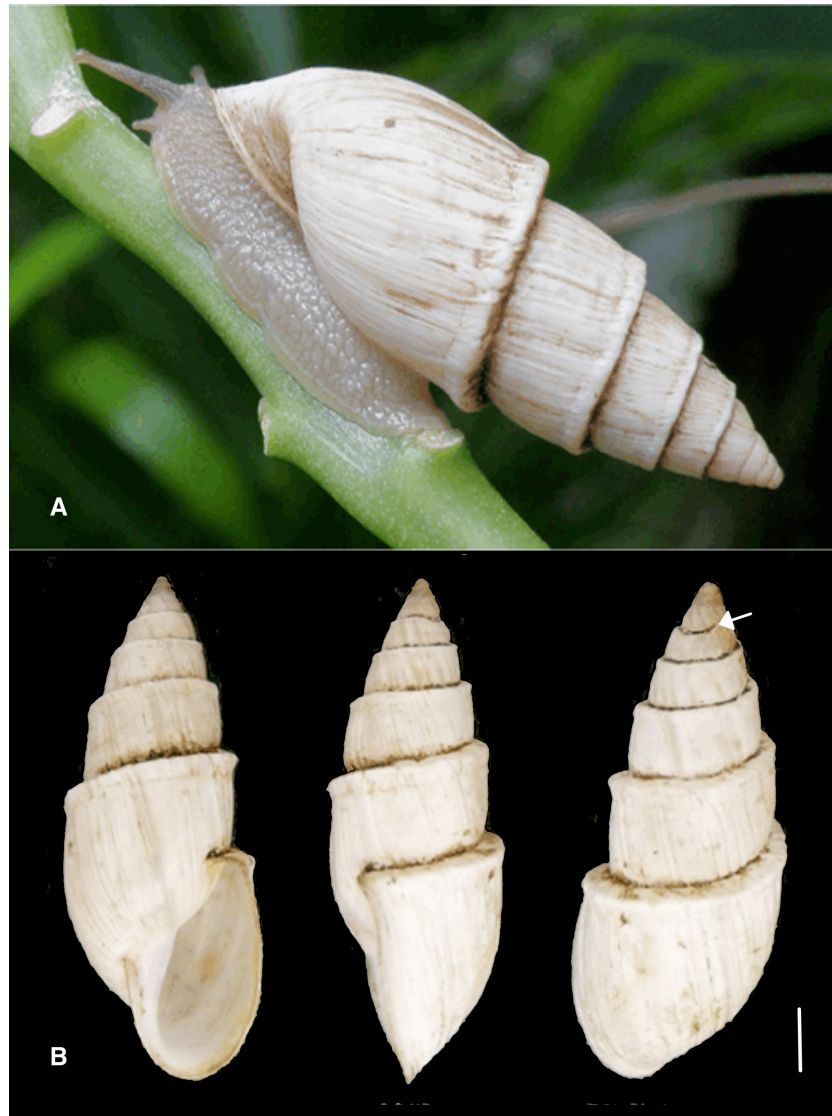
| Putative species | BGA |    | SDG |    | ABGD | GSI |    |
|------------------|-----|----|-----|----|------|-----|----|
|                  | 3%  | 4% | ML  | BI |      | ML  | BI |
| gA               | +   | –  | +   | +  | +    | +   | +  |
| gB               | +   | –  | –   | +  | –    | +   | +  |
| d1               | +   | +  | –   | +  | +    | +   | +  |
| d2               | +   | +  | nc  | nc | +    | nc  | nc |
| d3               | +   | +  | nc  | nc | +    | nc  | nc |
| s1               | +   | +  | nc  | nc | +    | nc  | nc |
| s2               | +   | +  | nc  | nc | +    | nc  | nc |
| s3               | +   | +  | nc  | nc | +    | nc  | nc |

values of Rosenberg’s  $P_{AB}$  and Rodrigo’s  $P(RD)$ ; however, using BI the two groups were significantly different using the latter parameter, although the other parameters hardly differed (Table 2, Table S3). The ABGD method resulted in one group for the recursive partition with a prior of 0.1; 13 with 0.060; 14 with 0.036; 17 with 0.022, 0.013, 0.008, 0.005, 0.003, and 0.002; 19 groups were found with prior 0.001. The initial partition was stable on 17 groups at prior values of 0.022 and below. Of the two *B. guadalupensis* groups only group A was recognised with this method (Table 2, Table S4). On the contrary, in the GSI method both group A and B had a value of 1.00 (monophyly) with both ML and BI; all values were statistically significant, thus GSI suggested two species. Also within *B. diaphanus* two groups were suggested, but only one of these groups (from Jamaica and Haiti) had a significant value of 1.00. The analysed samples of *B. sporadicus* proved not to be monophyletic (Table 2, Table S5).

## DISCUSSION

*Bulimulus guadalupensis* is known to be very variable morphologically, although measurements on samples throughout its distribution area led Breure (1974) conclude that “no infraspecific differentiation occurs.” The results on this species reported in the present paper are not univocal, the two groups that are discernable depend on the species delimitation method chosen. Thus drawing nomenclatural conclusions would—in the absence of clear external morphological differences—hinge totally on ambiguous molecular data. Since the locality data are often also not informative (e.g., in case of introduction or interception), no nomenclatural conclusions can be drawn.

For *B. diaphanus*, Breure (1974) recognised two subspecies, of which the samples studied in this paper from Haiti and Jamaica may be assigned to the nominate taxon, and the Nevis sample to *B. diaphanus fraterculus* (Potiez & Michaud, 1835) (Fig. 6B); more fresh tissue samples from different localities within its distribution range are needed to confirm the phylogenetic basis for the morphological differences reported earlier by Breure (1974). The polyphyly of samples of *B. diaphanus* in this study is possibly an indication of the

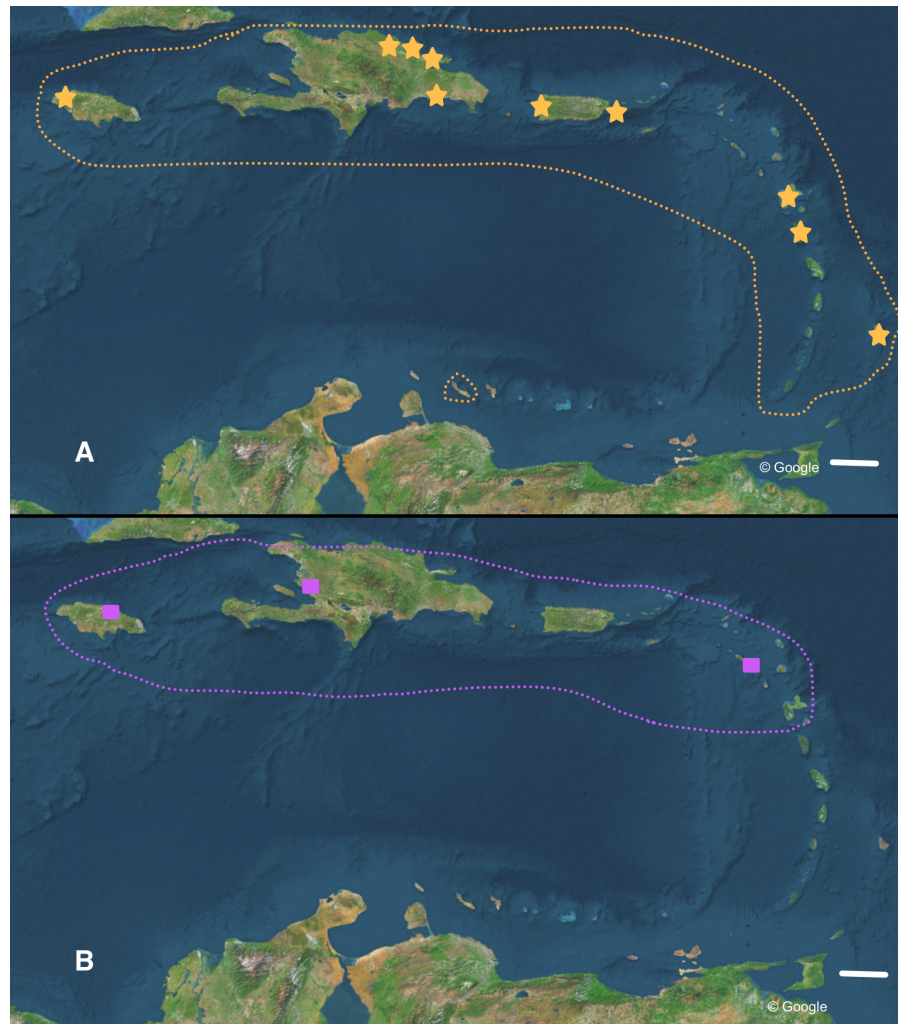


**Figure 5** *Bulimulus sporadicus* (d'Orbigny, 1835), Paraguay, Concepción. U. Drechsel leg. RMNH.MOL.336661 (shell height 31.3 mm). (A) living specimen (photo by courtesy U. Drechsel). (B) different views of the shell, arrow indicating the place where the carination starts. Scale 5 mm.

presence of cryptic species in this group, but also here lack of data prevent me from drawing nomenclatorial conclusions.

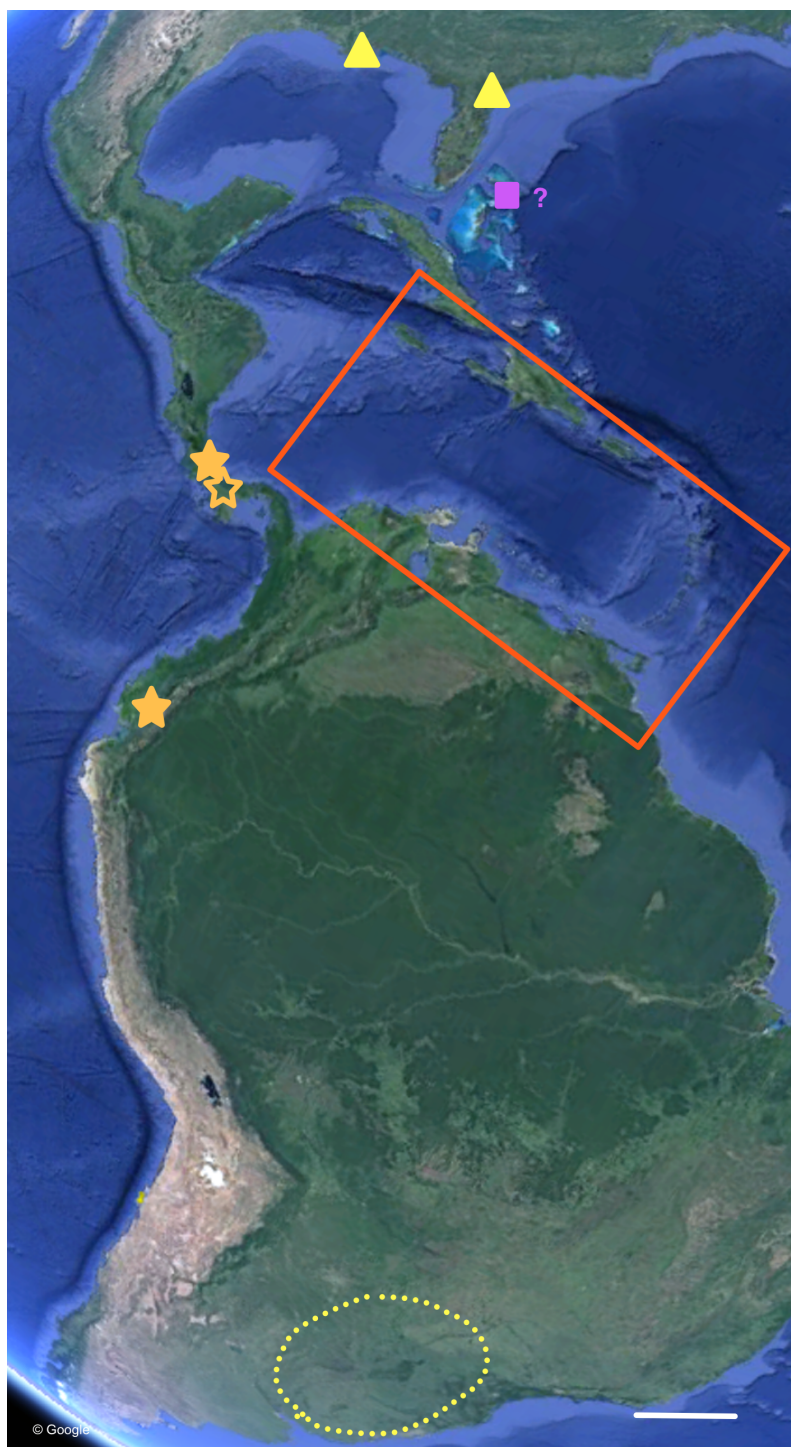
The occurrence of alien species in Florida seems to follow a 'burst-diminishing pattern', also observed in other introduced species, from becoming very common after the introduction to diminishing to (nearly) extirpated after some time (B Frank, pers. comm., 2014). The Miami population of *B. guadalupensis* currently lasted at least ten years. The Jacksonville population of *B. aff. sporadicus* was only recently discovered and seems to be thriving, at least within the city limits, possibly resulting from the potential absence of natural enemies (such as *Euglandina* snails). *Simberloff & Gibbons (2004)* have suggested that population collapses of introduced species may simply be temporary lows during a





**Figure 6** Distribution of (A) *Bulimulus guadalupensis* (orange), and (B) *B. diaphanus* (purple) in the West Indies. Dotted lines denote generalised distribution area, solid symbols sampled localities. Note that the Haitian locality is only an approximation. Map data: Google. Scale 100 km.

more or less regular boom-and-burst cycle. The time span of such a process may vary from species to species due to specific conditions, and is as yet unknown for these *Bulimulus*. Other introductions of these species in the Caribbean are less well documented. In Curaçao (Breure, 1975) a population of *B. guadalupensis* is still present, but only in gardens in some suburban areas outside Willemstad (G Van Buurt, pers. comm., 2014). From the network analysis (Fig. 4) it could be deduced that the introductions in Ecuador and Honduras may be traced back to the population in Guayabo, Puerto Rico, which may be linked to—in this case—export activities at the industrial park where the collection was made (Cf. Cowie *et al.*, 2008). However, *Bulimulus* species are not considered to be high-risk exotics (Cowie *et al.*, 2009). The introduction in Jamaica of this species may be linked to a population on a different island, and in this case molecular evidence suggests it may be traced to Barbados (see also Fig. 6A).



**Figure 7** Distribution of *Bulimulus sporadicus* (yellow), *B. guadalupensis*, and *B. diaphanus* in the Neotropics. Red square is area enlarged in Fig. 6. Open symbol is a locality not sampled; other symbols, see legends of Fig. 6. Map Data: Google. Scale 500 km.

The phylogenetic analyses also provide some insights in the populations identified as *B. sporadicus* (d'Orbigny, 1835). It may be noted that only one specimen is from a natural population, viz. Paraguay, Concepción, albeit a somewhat aberrant specimen through damage of the shell at a juvenile stage (Fig. 5). The two other populations sampled are alien in the USA (Houston, intercepted by USDA; Jacksonville). This species is widespread in its area of origin and has been recorded from Bolivia, Brazil (Mato Grosso, Rio Grande do Sul, Santa Catarina), Paraguay, and Uruguay (Agudo-Padrón, 2014; Agudo-Padrón et al., 2014; Simone, 2006; see also Fig. 7). In Uruguay and Argentina (Provs. Buenos Aires, Chaco, Córdoba, Corrientes, Entre Ríos, Formosa, Misiones, Tucumán) this taxon is replaced by the very similar *B. bonariensis* (Rafinesque, 1833) (Cuezzo, Miranda & Constanza Ovando, 2013; Scarabino, 2003). Miquel (1991) and Cuezzo, Miranda & Constanza Ovando (2013) consider these taxa as synonyms, with Rafinesque's name having priority. However, the intraspecific variation within the large distribution range of this species makes it likely to be a species complex. Thus it may warrant a more detailed study, including molecular research, to clarify the possible existence of closely related taxa which may be difficult to distinguish on the basis of shell morphology alone.

This study shows that use of different species delimiting methods may produce different species hypotheses, and are thus of limited value to arrive at an unequivocal taxonomic interpretation of these *Bulimulus* species, as was also observed by Prévot et al. (2013). In this case the relatively low number of samples analysed, and the use of only one genetic marker, makes it hard to convert the results into solid taxonomic decisions. Therefore it is suggested that the application of species delimitation methods may be of limited value as such, and should be complemented by other evidence, e.g., morphological studies.

Finally, the present study sheds some light on the usefulness of the barcoding method for rapid identification of intercepted snails of this group. Although the results strongly suggest that some of the physical movements (i.e., introduction as alien species in a distinct country) can be traced back to a source within the known distribution area, it is also clear that this holds true for the better known species only (e.g., *B. guadalupensis*). For others, especially for taxa that are morphologically very similar, the extent and reliability of the current database in GenBank is insufficient, especially with respect to areas where *Bulimulus* species are known to be native. In a wider perspective, where the effects of the global economy on non-marine gastropod introductions are becoming more and more manifest (Robinson, 1999), this is a problematic conclusion.

## ACKNOWLEDGEMENTS

The following colleagues are thankfully acknowledged for allowing material to be sequenced: FJ Borrero (Philadelphia), U Drechsel (Asunción), B Frank (Jacksonville), MG Cuezzo (Tucumán), DG Robinson (Philadelphia). D Groenenberg discussed some items during preparation of the manuscript, and KK Beentjes provided assistance in the Naturalis Biodiversity Center molecular lab, and I am highly grateful for their input. G Van Buurt (Willemstad) and B Frank provided useful information on local occurrence data. Jairo Pinheiro and an anonymous reviewer made useful suggestions on an earlier draft of this paper.

## ADDITIONAL INFORMATION AND DECLARATIONS

### Funding

The author received no funding for this work.

### Competing Interests

The author declares there are no competing interests.

### Author Contributions

- Abraham S.H. Breure conceived and designed the experiments, performed the experiments, analyzed the data, contributed reagents/materials/analysis tools, wrote the paper, prepared figures and/or tables, reviewed drafts of the paper.

### DNA Deposition

The following information was supplied regarding the deposition of DNA sequences:  
GenBank accession numbers can be found in [Table 1](#).

### Data Availability

The following information was supplied regarding data availability:  
All raw data are either published (GenBank) or provided as supplementary files.

### Supplemental Information

Supplemental information for this article can be found online at <http://dx.doi.org/10.7717/peerj.1836#supplemental-information>.

## REFERENCES

- Agudo-Adrón I.** 2014. Inventario sistemático de los moluscos continentales ocurrentes en el Estado de Santa Catarina, Brasil / Inventário sistemático dos moluscos continentais ocurrentes no Estado de Santa Catarina, Brasil. *Bioma* 2(21):6–23.
- Agudo-Adrón I, Souza Da Luz J, Kleba Lisboa L, Zerminiani ME.** 2014. Additional twelve new records to inventory of continental mollusc species from Santa Catarina State / SC, Central Southern Brazil. *Boletín de la Asociación Argentina de Malacología* 3(2):11–20.
- Blaxter ML.** 2004. The promise of a DNA taxonomy. *Philosophical transactions of the Royal Society of London B* 359:669–679 DOI 10.1098/rstb.2003.1447.
- Breure ASH.** 1974. Caribbean land molluscs: Bulimulidae I. *Bulimulus*. *Studies on the Fauna of Curaçao and other Caribbean Islands* 45:1–80.
- Breure ASH.** 1975. *Bulimulus guadalupensis* (Bruguière, 1789), een nieuwe soort voor de malacofauna van Curaçao. *Correspondentieblad van de Nederlandse Malacologische Vereniging* 166:440–441.
- Breure ASH.** 1978. Notes on and descriptions of Bulimulidae (Mollusca, Gastropoda). *Zoologische Verhandlungen Leiden* 164:1–255.
- Breure ASH.** 1979. Systematics, phylogeny and zoogeography of Bulimulinae (Mollusca). *Zoologische Verhandlungen Leiden* 168:1–215.



- Breure ASH, Borrero FJ. 2008.** An annotated checklist of the land snail family Orthalicidae (Gastropoda: Pulmonata: Orthalicoidea) in Ecuador, with notes on the distribution of the mainland species. *Zootaxa* **1768**:1–40.
- Breure ASH, Romero PD. 2012.** Support and surprises: molecular phylogeny of the land snail superfamily Orthalicoidea using a three-locus gene analysis with a divergent time analysis and ancestral area reconstruction (Gastropoda: Stylommatophora). *Archiv für Molluskenkunde* **141**:1–20 DOI [10.1127/arch.moll/1869-0963/141/001-020](https://doi.org/10.1127/arch.moll/1869-0963/141/001-020).
- Cowie RH, Dillon jr RT, Robinson DG, Smith JW. 2009.** Alien non-marine snails and slugs of priority quarantine importance in the United States: a preliminary risk assessment. *American Malacological Bulletin* **27**:113–132 DOI [10.4003/006.027.0210](https://doi.org/10.4003/006.027.0210).
- Cowie RD, Hayes KA, Tran CT, Meyer III WM. 2008.** The horticultural industry as a vector of alien snails and slugs: widespread invasions in Hawaii. *International Journal of Pest Management* **54**:267–276 DOI [10.1080/09670870802403986](https://doi.org/10.1080/09670870802403986).
- Cuezzo MG, Miranda MJ, Constanza Ovando XM. 2013.** Species catalogue of Orthalicoidea in Argentina (Gastropoda: Stylommatophora). *Malacologia* **56**:135–191 DOI [10.4002/040.056.0210](https://doi.org/10.4002/040.056.0210).
- Cummings MP, Neel MC, Shaw KL. 2008.** A genealogical approach to quantifying lineage divergence. *Evolution* **62**:2411–2422 DOI [10.1111/j.1558-5646.2008.00442.x](https://doi.org/10.1111/j.1558-5646.2008.00442.x).
- Folmer O, Black M, Hoeh W, Lutz R, Vrijenhoek R. 1994.** DNA primers for amplification of mitochondrial cytochrome c oxidase subunit I from diverse metazoan invertebrates. *Molecular Marine Biology and Biotechnology* **3**:294–299.
- Frank B, Lee H. 2014.** *Bulimulus sporadicus* (d'Orbigny, 1835). Available at <http://www.jaxshells.org/gallery5.htm> (accessed June 30 2014).
- Guindon S, Dufayard JF, Lefort V, Anisimova M, Hordijk W, Gascuel O. 2010.** New algorithms and methods to estimate maximum-likelihood phylogenies: assessing the performance of PhylML 3.0. *Systematic Biology* **59**:307–321 DOI [10.1093/sysbio/syq010](https://doi.org/10.1093/sysbio/syq010).
- Huson DH, Bryant D. 2006.** Application of phylogenetic networks in evolutionary studies. *Molecular Biology and Evolution* **23**:254–267 DOI [10.1093/molbev/msj030](https://doi.org/10.1093/molbev/msj030).
- Larget B, Simon DL. 1999.** Markov chain Monte Carlo algorithms for the Bayesian analysis of phylogenetic trees. *Molecular Biology and Evolution* **16**:750–759 DOI [10.1093/oxfordjournals.molbev.a026160](https://doi.org/10.1093/oxfordjournals.molbev.a026160).
- Linares EL, Vera ML. 2012.** Catálogo de los moluscos continentales de Colombia. In: *Biblioteca José Jerónimo Triana*. vol. 23. Bogotá: Universidad Nacional de Colombia.
- Masters BC, Fan V, Ross HA. 2011.** Species delimitation: a Geneious plugin for the exploration of species boundaries. *Molecular Ecology Resources* **11**:154–157 DOI [10.1111/j.1755-0998.2010.02896.x](https://doi.org/10.1111/j.1755-0998.2010.02896.x).
- Miquel SE. 1991.** El género *Bulimulus* Leach, 1814 (Mollusca, Gastropoda, Stylommatophora) en la República Argentina. *Studies on Neotropical Fauna en Environment* **26**:93–112 DOI [10.1080/01650529109360839](https://doi.org/10.1080/01650529109360839).
- Posada D. 2008.** jModelTest: Phylogenetic model averaging. *Molecular Biology and Evolution* **25**:1253–1256 DOI [10.1093/molbev/msn083](https://doi.org/10.1093/molbev/msn083).

- Prévot V, Jordaens K, Sonet G, Backeljau T. 2013.** Exploring species level taxonomy and species delimitation methods in the facultatively self-fertilizing land snail genus *Rumina* (Gastropoda: Pulmonata). *PLoS ONE* **8**(4):e60736  
[DOI 10.1371/journal.pone.0060736](https://doi.org/10.1371/journal.pone.0060736).
- Puillandre N, Lambert A, Brouillet S, Achaz G. 2012.** ABGD, Automated Barcode Gap Discovery for primary species delimitation. *Molecular Ecology* **21**:1864–1877  
[DOI 10.1111/j.1365-294X.2011.05239.x](https://doi.org/10.1111/j.1365-294X.2011.05239.x).
- Ramírez R, Paredes C, Arenas J. 2003.** Moluscos del Perú. *Revista Biología Tropical* **51**(Supplement 3):225–284.
- Robinson DG. 1999.** Alien invasions: the effects of the global economy on non-marine gastropod introductions into the United States. *Malacologia* **41**:413–438.
- Rodrigo A, Bertels F, Heled J, Noder R, Shearman H, Tsai P. 2007.** The perils of plenty: what are we going to do with all these genes? *Philosophical Transactions of the Royal Society B* **363**:3893–3902 [DOI 10.1098/rstb.2008.0173](https://doi.org/10.1098/rstb.2008.0173).
- Ronquist F, Huelsenbeck JP. 2003.** MrBayes 3: Bayesian phylogenetic inference under mixed models. *Bioinformatics* **19**:1572–1574 [DOI 10.1093/bioinformatics/btg180](https://doi.org/10.1093/bioinformatics/btg180).
- Rosenberg NA. 2007.** Statistical tests for taxonomic distinctiveness from observations of monophyly. *Evolution* **61**:317–323 [DOI 10.1111/j.1558-5646.2007.00023.x](https://doi.org/10.1111/j.1558-5646.2007.00023.x).
- Rosenberg G, Muratov I. 2006.** Status report on the terrestrial Mollusc of Jamaica. *Proceedings of the Academy of Natural Sciences of Philadelphia* **155**:117–161  
[DOI 10.1635/i0097-3157-155-1-117.1](https://doi.org/10.1635/i0097-3157-155-1-117.1).
- Scarabino F. 2003.** Lista sistemática de los Gastropoda terrestres de Uruguay. *Comunicaciones de la Sociedad Malacológica del Uruguay* **8**:203–214.
- Simberloff D, Gibbons L. 2004.** Now you see them, now you don't! - population crashes of established introduced species. *Biological Invasions* **6**:161–172  
[DOI 10.1023/B:BINV.0000022133.49752.46](https://doi.org/10.1023/B:BINV.0000022133.49752.46).
- Simone LRL. 2006.** *Land and freshwater molluscs of Brazil*. São Paulo: EGB/Fapesp, 1–390.
- Tamura K, Nei M, Kumar S. 2004.** Prospects for inferring very large phylogenies by using the neighbor-joining method. *Proceedings of the National Academy of Sciences of the United States of America* **101**:11030–11035 [DOI 10.1073/pnas.0404206101](https://doi.org/10.1073/pnas.0404206101).
- Tamura K, Stecher G, Peterson D, Filipowski A, Kumar S. 2013.** MEGA6: Molecular Evolutionary Genetics Analysis version 6.0. *Molecular Biology and Evolution* **30**:2725–2729  
[DOI 10.1093/molbev/mst197](https://doi.org/10.1093/molbev/mst197).
- Thompson FE. 2011.** An annotated checklist and bibliography of the land and freshwater snails of Mexico and Central America. *Bulletin Florida Museum of Natural History* **50**:1–299.