



Published in final edited form as:

Sci Transl Med. 2016 May 11; 8(338): 338ra66. doi:10.1126/scitranslmed.aaf2362.

Tau and A β imaging, CSF measures, and cognition in Alzheimer's disease

Matthew R. Brier¹, Brian Gordon^{2,3}, Karl Friedrichsen², John McCarthy⁴, Ari Stern⁴, Jon Christensen², Christopher Owen², Patricia Aldea², Yi Su², Jason Hassenstab^{1,3}, Nigel J. Cairns^{1,3,5}, David M. Holtzman^{1,3,6}, Anne M. Fagan^{1,3,6}, John C. Morris^{1,3,5,6}, Tammie L. S. Benzinger^{2,3,7,*}, and Beau M. Ances^{1,2,3,6,*†}

¹Department of Neurology, Washington University in St. Louis, St. Louis, MO 63110, USA

²Department of Radiology, Washington University in St. Louis, St. Louis, MO 63110, USA

³Knight Alzheimer's Disease Research Center, Washington University in St. Louis, St. Louis, MO 63110, USA

⁴Department of Mathematics, Washington University in St. Louis, St. Louis, MO 63110, USA

⁵Department of Pathology, Washington University in St. Louis, St. Louis, MO 63110, USA

⁶Hope Center for Neurological Disorders, Washington University in St. Louis, St. Louis, MO 63110, USA

⁷Department of Neurosurgery, Washington University in St. Louis, St. Louis, MO 63110, USA

Abstract

Alzheimer's disease (AD) is characterized by two molecular pathologies: cerebral β -amyloidosis in the form of β -amyloid (A β) plaques and tauopathy in the form of neurofibrillary tangles, neuritic plaques, and neuropil threads. Until recently, only A β could be studied in humans using positron emission tomography (PET) imaging owing to a lack of tau PET imaging agents. Clinical pathological studies have linked tau pathology closely to the onset and progression of cognitive symptoms in patients with AD. We report PET imaging of tau and A β in a cohort of cognitively

Permissions: Obtain information about reproducing this article: <http://www.sciencemag.org/about/permissions.dtl>

†Corresponding author. bances@wustl.edu.

*These authors contributed equally to this work

Supplementary Materials: www.sciencetranslationalmedicine.org/cgi/content/full/8/338/338ra66/DC1 Methods

Author contributions: M.R.B. developed the methodology, performed formal analysis, and wrote the paper; B.G. performed formal analysis; K.F. curated the data and developed the methodology; J.M. and A.S. developed the methodology and computation; J.C. performed formal analysis and curated the data; P.A. performed project administration and was responsible for subject accrual; Y.S. developed the methodology; J.H. contributed resources; N.J.C., D.M.H., A.M.F., and J.C.M. contributed to study conception, resources, and project administration; and B.M.A. and T.L.S.B. provided supervision and conception of the study. The staff of the Imaging Core at the Knight Alzheimer's Disease Research Center performed imaging acquisition. All authors critically revised the manuscript.

Competing interests: D.M.H. is co-founder of and on the scientific advisory board for C₂N Diagnostics and consults for Genentech, Eli Lilly, AbbVie, Denali, and NeuroPhage. A.M.F. is on the scientific advisory board for IBL International and Roche and is a consultant for DiamiR. J.M. consults for Lilly and Takeda. B.G. is participating in a clinical trial with Avid Radiopharmaceuticals.

Data and materials availability: These data are available by request at the Knight Alzheimer's Disease Research Center at Washington University in St. Louis. AV-1451 was produced under a material transfer agreement between Washington University and Avid Radiopharmaceuticals.

normal older adults and those with mild AD. Multivariate analyses identified unique disease-related stereotypical spatial patterns (topographies) for deposition of tau and A β . These PET imaging tau and A β topographies were spatially distinct but correlated with disease progression. Cerebrospinal fluid measures of tau, often used to stage preclinical AD, correlated with tau deposition in the temporal lobe. Tau deposition in the temporal lobe more closely tracked dementia status and was a better predictor of cognitive performance than Ab deposition in any region of the brain. These data support models of AD where tau pathology closely tracks changes in brain function that are responsible for the onset of early symptoms in AD.

Introduction

Alzheimer's disease (AD) is characterized neuropathologically by the presence of β -amyloid (A β) plaques and tau immunoreactive neuritic plaques, neurofibrillary tangles, and neuropil threads in the cerebral cortex (1). Autopsy studies demonstrate that A β and tau pathology accumulate in stereotypical spatial patterns, or topographies, over the course of the disease (2, 3). Topographic studies of AD-related pathology in vivo, until recently, have been limited to fibrillar A β (4, 5) owing to a lack of positron emission tomography (PET) imaging agents for tau pathology. However, a number of tau pathology imaging agents have recently been developed and are available for human studies (6).

Extant models of AD pathophysiology, such as the amyloid cascade hypothesis, establish a temporal ordering of markers, with the emergence of AD-related tauopathy occurring downstream to the accrual of A β pathology (7–11). Consistent with this proposal, markers of tau pathology correlate more closely with changes in cognition compared to A β measures (12). However, the prior lack of imaging agents has limited studies of tau to postmortem examinations (13–16) or measures that lack topographic information such as measurement of tau in cerebrospinal fluid (CSF). As a result, relationships between cognition and A β topography have been defined (17), but the relationship with tau topography is not defined in vivo. Without this spatial information, CSF tau measures may be assessing other forms of neurodegeneration related to cell death or synaptic dysfunction.

The use of both tau and A β imaging allows for the attribution of AD-related cognitive dysfunction to specific pathological processes and locations within the brain. Further, the spatial relationships between tau pathology and other markers of AD have not been established. Here, we examine how tau imaging topographies relate to clinical status, A β imaging, CSF measures of AD pathology, and neuropsychological performance. Tau and A β represent distinct pathological processes, but they are strongly related in the context of AD. Given that PET- and CSF-based techniques may measure similar processes (18), PET and CSF measurements of tau and A β may be related. Here, we assessed the relationship between tau PET imaging, A β PET imaging, CSF measures, and cognition in healthy control individuals and those with mild AD. Given extant models (8, 9) and limited autopsy-based empirical data (13–15), we hypothesized that tau would be a stronger predictor of cognition than A β owing to its position later in the preclinical disease course. These relationships were investigated in vivo using multivariate statistical models well suited to identify PET topographies associated with the presence or absence of disease. We identified

the relationships between A β and tau pathology in distinct topographies and correlated them with measurements of A β and tau in CSF and neuropsychological measures of disease.

Results

Data from 46 individuals were analyzed (36 cognitively normal controls, 10 with mild AD). Demographics of each subset of the cohort are provided in Table 1. Global cognitive and functional performance was assessed using the clinical dementia rating (CDR) scale (19). Each participant underwent T807 (tau) (20) and florbetapir (A β) PET imaging and magnetic resonance imaging (MRI). A subset of individuals also underwent lumbar puncture for CSF assays and neuropsychological testing. Standardized uptake value ratios (SUVRs) with (when presenting regional data) and without (when presenting voxelwise data) partial volume correction were calculated within 42 bilateral anatomical brain regions of interest (ROIs) defined by FreeSurfer software (21, 22).

Cognitively impaired participants demonstrate elevated tau burden

Mean (across participants) tau and A β SUVR imaging data are presented in Fig. 1 (representative single subject data are shown in fig. S1). The data were split into two groups based on the presence or absence of cognitive impairment. Cognitively normal (CDR0; $n = 36$) participants showed minimal tau tracer uptake throughout the brain with the exception of the basal ganglia. Cognitively impaired (CDR>0; $n = 10$) participants exhibited markedly increased tau tracer uptake in the temporal lobes and throughout the cerebral cortex. A β imaging showed the known difference in measured A β deposition between cognitively normal and cognitively impaired groups (Fig. 1).

Distinct tau and A β topographies are associated with cognitive impairment

To assess the behavior of PET tau and A β pathology across participants, the imaging data were first decomposed into component topographies. This accomplished two goals: (i) it accounted for the correlation structure of the data across ROIs and (ii) reduced the number of statistical comparisons. Singular value decomposition (SVD) identified a small number of latent component topographies whose representation in single subjects explained a majority of the variance present in the data. In each participant, tau and A β pathology burden measured by PET imaging was assessed in 42 ROIs; many ROIs were highly correlated with other ROIs and could be more concisely summarized as topographies or combinations of ROIs. The PET imaging tau and A β data were arranged into participants ($n = 46$) by ROI matrices ($M = 42$) separately and subjected to SVD. PET imaging of tau and A β was best described as a combination of two component topographies (Fig. 2A). Both PET tau and A β imaging data were empirically determined to have two significant components (that is, rank = 2), suggesting that the two markers have similar signal-to-noise characteristics. For both PET tau and A β , the first topography roughly corresponded to the mean of the image (that is, regions were similarly positively weighted). The second PET tau topography was most strongly localized (or “loaded,” in SVD terminology) in the temporal lobe including the hippocampus. In contrast, the second PET A β topography was most strongly localized in frontal and parietal regions. This analysis demonstrated that PET imaging data for tau and A β exhibited strong autocorrelation across ROIs but that each had distinct topographies.

In each participant, the representation of each of the two PET tau and two PET A β topographies described above was best estimated using regional weights derived from SVD. For each topography, these values were subjected to an analysis of covariance (ANCOVA) with age, CDR, and presence of an APOE ϵ 4 allele as factors (table S1). The two PET tau topographies were more strongly represented in participants with a higher CDR status ($P < 0.001$) but were not significantly modified by age or APOE status (Fig. 2B). The first PET A β topography was not significantly associated with any variables of interest; the second topography was more strongly represented in participants with higher CDR status ($P = 0.04$) and moderately associated with increasing age ($P = 0.08$). In both the tau and A β data, there were statistically significant differences between the CDR0 and CDR>0 groups; however, there was a significant overlap particularly in the A β data (Fig. 2C). The separation between the CDR0 and CDR>0 groups was more marked in the PET tau data compared to the PET A β data. This visual observation was quantified as F values (table S1); these F values were an order of magnitude larger for PET tau than for PET A β (table S1). Thus, as measured by the CDR, representation of tau topographies was more strongly associated with dementia status across participants.

Evidence of preclinical AD is associated with pathological topographies

Inspection of Fig. 2B revealed that expression of each topography varied widely in the CDR0 participants, particularly with respect to PET A β topographies. CDR0 implies cognitive normality but not absence of preclinical pathology. Preclinical AD can be operationalized using CSF measures of tau and A β with simple scalar cutoffs. To most simply characterize the pathological status of the CDR0 participants, median splits were used to dichotomize participants as either CSF A β -positive or CSF A β -negative or tau-positive or tau-negative. CSF that was A β - and tau-negative corresponded to healthy aging without pathology. A β -positive tau-negative CSF corresponded to stage 1 preclinical disease; A β -positive tau-positive CSF corresponded to stage 2 preclinical disease (23, 24). Stratifying CDR0 participants in this manner revealed that CDR0 participants with higher expression of the component topographies tended to have evidence of elevated A β or tau pathology in CSF (Fig. 2C). The effect of preclinical disease stage was more marked for PET A β , suggesting that tau pathology burden was more closely temporally linked to clinical status as measured by CDR and preclinical disease stage. The preceding results were reproduced in a larger sample of individuals who only had PET tau data available (see Supplementary Results and tables S4 and S5).

PET tau and A β , in distinct topographies, are strongly correlated

The previous analysis described the relationship between PET tau and PET A β topographies and disease stage. Next, the relationship between the PET tau and A β topographies was compared directly using canonical correlation. Canonical correlation is a multivariate generalization of the more familiar bivariate correlation. Canonical correlation identified both a PET tau and PET A β topography such that the data, when projected onto these weighted topographies, were maximally correlated. Thus, canonical correlation identified the topography of each pathological species that was mostly related to the other species. The present PET tau and PET A β topographies were represented by a single canonical correlation that explained 75% of the covariance in the data (Fig. 3). The weighted regional

patterns of the two topographies were modestly correlated ($r = 0.29$, $P = 0.062$), which reflects the known divergence in the pathological topographies (2, 3). The PET data weighted and averaged according to these topographies were highly correlated ($r = 0.92$, $P < 10^{-18}$), which reflects the strong relationship between tau and A β when the appropriate topographies are considered. The PET tau topography was most heavily localized in the medial temporal lobe, parietal cortex, and precuneus and was most highly correlated with PET A β topography in the frontal and parietal regions.

Mean PET tau and A β correlate with CSF tau, phosphorylated tau, and A β_{42}

PET tau and A β imaging techniques and CSF-based techniques may measure correlated pathological processes (18). Therefore, the two measures may be related. To investigate this relationship, the correlations between mean (calculated across all gray matter regions) PET tau and A β and CSF tau, phosphorylated tau (p-tau), and A β_{42} were calculated (table S2). As predicted, mean PET tau positively correlated with CSF tau ($r = 0.36$, $P = 0.029$) and CSF p-tau ($r = 0.29$, $P = 0.089$) but did not significantly correlate with CSF A β_{42} ($r = -0.25$, $P = 0.14$); mean PET A β negatively correlated with CSF A β_{42} ($r = -0.54$, $P = 0.006$) but also positively correlated with CSF tau ($r = 0.52$, $P = 0.0011$) and p-tau ($r = 0.49$, $P = 0.0023$). The negative correlations were due to CSF A β_{42} being reduced, not increased, during AD pathogenesis as more A β becomes deposited in the brain.

CSF tau and A β_{42} correlate with specific topographies of PET tau and PET A β

Penalized regression models (25–27) with either CSF tau or A β_{42} (separately) as an outcome and regional PET tau and A β SUVR (together) as predictors were fit to determine the relationship between CSF and regional PET measures. PET tau and PET A β topographies were considered together in the model, allowing for the data to determine the modality that best predicted the variable of interest. The critical feature of penalized regression is that the solution is sparse (that is, the regression β s corresponding to most PET tau and A β ROIs are set to 0), and only the most predictive ROIs receive nonzero regression β weights. The relationship between PET tau and A β topographies and CSF tau was examined first. The penalized model significantly fit the data ($R^2 = 0.96$, $Z = 4.72$, $P < 0.0001$). The combination of PET tau and A β topographies that best correlated with CSF tau is shown in the top row of Fig. 4A (exact values are shown in table S3). CSF tau was equally related to PET tau ($\sum|\beta_{\text{tau}}| = 2.93$) and PET A β ($\sum|\beta_{\text{A}\beta}| = 2.54$), as measured by the sum of the absolute value of the regression β values corresponding to PET tau and A β ROIs, respectively. This equal weighting was consistent with tau pathology being dependent on initial A β accumulation. Predictive PET tau regions included entorhinal and temporal cortex and the cuneus. The PET A β contribution was derived from the temporal and frontal regions. Similar topographies of predictive PET ROIs were found when predicting CSF p-tau; the overall correlation between the CSF tau and CSF p-tau predictive topographies was high ($r = 0.77$, $P < 10^{-16}$).

Next, the same relationship was investigated, but with CSF A β_{42} as the predicted outcome variable. The penalized model significantly fit the data ($R^2 = 0.34$, $Z = 3.22$, $P = 0.0006$). The joint topographies of PET tau and A β that best correlated with CSF A β_{42} are shown in the bottom row of Fig. 4A (exact values are shown in table S3). Most of the regression β

values were negative owing to the inverse relationship between CSF A β and pathology burden. In contrast to the CSF tau model, the predictive weight was more skewed toward PET A β ($\sum|\beta_{A\beta}| = 0.46$) compared to PET tau ($\sum|\beta_{\text{tau}}| = 0.26$). This suggested that PET tau has relatively less predictive information relating to CSF A β_{42} . The contributing topography from PET tau was primarily loaded in the superior portions of the cortex. The PET A β topography was primarily composed of frontal and parietal regions. The highly significant predictive power of both models suggested that there was a strong relationship between CSF and PET measures of tau and A β pathology.

Specific tau and A β topographies correlate with neuropsychological performance

To examine the relationship between pathology and cognitive function, the relationship between PET tau and A β topographies and neuropsychological performance composite scores was compared using the same penalized regression model as described above. Each participant underwent neuropsychological testing that was summarized into four composite scores summarizing the domains of episodic, semantic, working memory, and visuospatial processing and an additional overall (global) measure. Of these, episodic ($Z = 2.42$, $P = 0.0078$), semantic ($Z = 4.85$, $P < 0.0001$), visuospatial ($Z = 5.17$, $P < 0.0001$), and the global score ($Z = 3.97$, $P < 0.0001$) were significantly predicted by penalized regression after correction for multiple comparisons, whereas the working memory composite was not significantly fit by the model. The combined PET tau and A β topographies that best predicted each cognitive composite are shown in Fig. 4B (exact values are shown in table S3). In each case, PET tau was the dominant topography with contributions to the model, quantified as the sum of the absolute value of the regression β , two- to ninefold higher than the contribution of PET A β . With the exception of predicting episodic memory, the topographies were sparse, including only temporal regions and basal frontal regions. The contribution of PET tau, specifically temporal lobe tau, in each tested domain demonstrated that tau was more closely related to cognition than A β .

We further investigated the correlation between PET tau and A β topography and neuropsychological composite scores in the CDR0 group only. In the domains that were significantly associated with PET tau and A β topographies in the full group, we refitted the models in the CDR0 group only and calculated the correlation between the resulting predictive topographies. The topography that was predictive of episodic memory scores in the full group was not correlated with the predictive topography in the CDR0 group ($r = 0.04$, $P = 0.70$). Similarly, the topographies predictive of semantic memory performance were not significantly correlated ($r = -0.01$, $r = 0.90$). However, the topographies predicting visuospatial performance ($r = 0.54$, $P < 0.001$) and global cognitive performance ($r = 0.19$, $r = 0.091$) were correlated (although the latter showed a trend rather than significance). These data suggest that the relationship between pathology and neuropsychological performance varies over the course of the disease.

Discussion

The present results identified topographies of tau deposition as measured by T807 PET imaging that were associated with clinical status, A β deposition as revealed by PET

imaging, CSF AD biomarkers, and AD-related cognitive impairment. A strong correlation existed between A β deposited in one topography and tau deposited in another topography. Tau imaging, both globally and in a specific topography, was significantly associated with CSF measures of tau-related neural injury. In a combined model, PET tau deposition was demonstrated to be more closely associated with cognitive function than A β PET imaging. Together, these results establish tau imaging as an important marker of AD-related pathology.

The A β imaging literature has grown over the past decade (4), whereas tau imaging is a relatively new addition to the field. FDDNP [2-(1-{6-[(2-[fluorine-18]fluoroethyl)(methyl)amino]-2-naphthyl)-ethylidene]maltonitrile}] was the first tau imaging agent but had low signal-to-noise properties and also bound to A β , which precluded investigation of specific pathological species (28) or required coimaging with A β agents and elaborate subtraction procedures (29). Methodological studies (that is, biochemistry and small-animal studies) have identified several compounds that are specific to tau pathology and have favorable biochemical properties (30, 31). Human studies, to date, have been small ($n < 25$) and have identified PET tau topographies consistent with studies in postmortem brain tissue (20, 32–35). In this preliminary body of work, PET tau pathology burden in specific ROIs (for example, hippocampus) was correlated with cognitive performance and hippocampal volume (34, 35). These studies have demonstrated the utility of tau imaging agents in identifying tau pathology burden in vivo. Our study builds on those studies by examining a larger cohort at various disease stages and capitalizing upon the spatial information of PET by explicitly relating tau topographies to disease stage, A β imaging, CSF biomarkers, and cognition.

PET tau and A β imaging acquires data at a resolution of about 5 to 8 mm and samples thousands of voxels, but the true dimensionality of the data is likely much lower (36). This study identified two topographies for both PET tau and A β that explained most of the variance in the data. The two tau topographies were associated with disease severity as measured by the CDR. The first tau topography was homogeneously distributed across the brain, but the second was concentrated in the temporal lobe. Similarly, the first A β topography was broadly distributed across the brain, whereas the second A β topography localized primarily in the frontal and parietal regions and was significantly associated with disease stage. Notably, the separation between CDR groups was visually more marked with respect to tau burden (Fig. 2, B and C), although significant overlap remained. Overlap with respect to CDR status likely represents the variable relationship between pathological burden and cognitive symptoms often attributed to differences in host factors, for example, cognitive reserve (8, 23). This suggests that representation of pathologically associated topographies of both tau and A β indexes disease progression, but the relationship to cognitive impairment is more pronounced with respect to tau.

A key feature of AD is that it is a dual proteinopathy. One of the more debated mechanisms is how two pathological species progress in independent topographies (11, 37, 38). Although the topographies are distinct, this study uses canonical correlation to emphasize that these two pathological processes are related. The correlation between tau and A β can be remarkably high when the relevant topographies are considered. This suggests that for a

given severity of A β deposition, the severity of tau pathology can also be estimated. The mechanism underlying the relationship between A β and tau in the generation of AD is unclear, but the empirical relationship is clearly evident.

In the absence of widely used tau PET ligands, CSF-based measurements of tau pathology burden have predominated in the AD field (39). CSF-based measurements afford certain advantages (for example, broad applicability) but do not provide topographic information afforded by PET imaging. Nevertheless, CSF-based measures and PET-based measures index similar pathological processes in the context of AD. As a result, a high correlation between mean PET tau SUVR and CSF tau was expected. Perhaps less intuitive, but commonly observed, is the strong relationship between CSF tau and PET A β SUVR, even in the absence of neurofibrillary tangles (40). This relationship could be understood in terms of the ordered nature of biomarker progression: once detectable tau pathology is present, there is already advanced A β pathology, allowing for a significant relationship (8, 9). The relationship between CSF- and PET-derived measures was topographically specific. The specificity of this relationship strengthens the argument that the identified relationships are disease-specific: elevated tau in the CSF is associated with tau deposition within regions known to be sensitive to AD-related tauopathy (2). Together, these lines of evidence suggest that the same pathological process is being measured by CSF and imaging techniques.

Understanding the contribution of tau and A β to cognitive symptoms, particularly early in AD, has been restricted owing to the lack of topographic tau information in vivo. Here, the predictive power of PET tau and A β topographies on neuropsychological performance was evaluated. In each investigated cognitive domain, the weight assigned to PET tau in the best-fitting model was larger than the weight assigned to PET A β . This implied that tau burden, not A β burden, is more closely linked to cognition. This increased correlation suggests that tau and cognition are more closely linked, consistent with extant models of AD (8, 9). Furthermore, PET imaging data coupled with the present penalized regression approach also provide regional specificity. Temporal lobe tau tended to be the strongest predictor of cognitive performance consistent with the known focus of tau pathology. The selective nature of our model suggests that tauopathy severity in the temporal lobe is sufficient to predict cognitive impairment across the early disease stages investigated here.

A number of design and analytical decisions influence the interpretation of our data and resulting conclusions. First, the recent implementation of this tau tracer limits the number of participants who have been scanned. Thus, this study includes a small number of participants compared to A β imaging studies. However, the participants in this study were well characterized, which improves the reliability of our results. Also related to the recent development of tau tracers, the present results are cross-sectional in nature and do not capture the longitudinal course of the disease. Finally, a number of analytical decisions may influence these results. For example, tau and A β deposition was measured within ROIs defined by anatomical parcellation; there are other equally valid methods to define brain ROIs. The effect of these analytical decisions is unknown, but the present approach makes use of techniques previously implemented and well validated in the A β imaging literature (21).

Together, these data provide important insight into the relationship between tau topographies and other measures of AD pathology and cognitive symptoms. This inference is made possible by the emergence of PET tau imaging agents. Tau imaging accurately discriminates disease stage assessed by the CDR, strongly correlates with CSF measures, in particular within temporal regions, and is more closely related to cognitive performance than is A β imaging. Thus, tau pathology appears to be more closely linked to cognitive dysfunction consistent with existing hypotheses. These data suggest distinct roles of PET A β and tau imaging going forward. PET A β will likely remain a powerful tool for early detection of AD pathology during the preclinical period. However, our data suggest that the close relationship between PET tau and disease stage and symptomatology will be critical for tracking the efficacy of disease-modifying therapies.

Materials and Methods

Study design

Forty-six participants were recruited from ongoing studies of memory and aging at the Knight Alzheimer's Disease Research Center at Washington University in St. Louis. Participants underwent cognitive assessment with the CDR scale (19), and MRI and PET imaging with T807 and florbetapir. All participants with CDR>0 (that is, clinically impaired) carried clinical diagnoses of AD or mild cognitive impairment due to AD. A subset of participants also underwent lumbar puncture ($n = 36$) and neuropsychological assessment ($n = 40$). All participants or their designees provided written informed consent before participating in this study that was consistent with the regulations of the Washington University in St. Louis School of Medicine Institutional Review Board.

Neuropsychological assessment

A comprehensive neuropsychological battery was administered to all participants, typically within 2 weeks of the annual clinical assessment. Standardized test scores were averaged to form four composites [see (41) for details on construction of composites and the standardization sample]. The episodic memory composite included the sum of the three free recall trials from the Selective Reminding Test (42), Associate Learning from the Wechsler Memory Scale (WMS) (43), and immediate recall of the WMS Logical Memory or WMS-Revised Logical Memory (44). The semantic composite included the Information subtest from the Wechsler Adult Intelligence Scale (WAIS) (45), the Boston Naming Test (46), and the Animal Naming Test (46). The working memory composite included WMS Mental Control, Digit Span Forward and Digit Span Backward, and Letter Fluency for S and P. The visuospatial composite included the WAIS Block Design and Digit Symbol subtests and Trailmaking Test A and B (47).

Imaging

MRI and florbetapir data were acquired on a Biograph mMR scanner (Siemens Medical Solutions) in a single session. T807 data were acquired in a separate session on a Biograph 40 PET/CT (computed tomography) scanner. Participants received a single intravenous bolus injection of 10 mCi of florbetapir and a single intravenous bolus injection of 6.5 to 10 mCi of T807.

PET data were analyzed using our standard technique (18, 19) implemented in the PET unified pipeline (<http://github.com/ysu001/PUP>). FreeSurfer segmentation (44) (<http://freesurfer.net/>) was used as the basis of the quantitative analysis to obtain regional SUVR with cerebellar gray matter as the reference region. Partial volume correction was also performed using a regional spread function technique (19). For florbetapir PET, the data between 50 and 70 min after injection were used for the analysis, and for T807, the imaging data between 80 and 100 min were used instead.

CSF analysis

CSF (20 to 30 ml) was collected after overnight fasting as described previously (48, 49). Total and phosphorylated tau and A β_{42} were measured using enzyme-linked immunosorbent assay [INNOTEST, Fujirebio (formerly Innogenetics)].

Dimensionality reduction and analysis of a single PET modality

PET SUVR, for both T807 and florbetapir, can be measured at the resolution of voxels, structurally or functionally defined sets of voxels, or the entire brain. This gives rise to data sets that appear to be high-dimensional (that is, many samples per imaging session) but can be represented by lower-dimensional projections. These bases can be identified using SVD or related procedures (for example, principal component analysis). In PET data, these composite factors represent topographies (that is, the weighted combination of brain regions), and the contribution of a given topography to an individual participant's data can be estimated. SVD was performed on the regional SUVR values (as variables) across participants (as samples) for tau and A β separately. The number of significant factors was determined by a permutation test.

Identifying the relationship between tau and A β topographies and CSF and neuropsychological performance using penalized regression

Penalized regression was used to identify the relationship between CSF tau and A β_{42} or neuropsychological Z scores (as outcome variables) and PET tau and A β topographies (as predictors). The penalty in penalized regression is enforced against the estimated regression β s (26). The family of penalized regression fit here is the elastic net penalty (27): the L1 penalty component enforces sparsity (that is, many β s will be identically 0, not included in the model) (26), whereas the L2 penalty allows highly correlated variables to enter the model simultaneously (27). Elastic net models are well suited for data that are highly collinear such as the regional PET data. Model parameters (total penalty and relative contribution of L1 and L2 penalty) are chosen by cross-validation. Penalized regression models, like any machine learning algorithm, are prone to overfitting. To assess significance of the fit models, permutation resampling determined the distribution of R^2 values under the null hypothesis.

Canonical correlation identifies relationships between tau and A β topographies

Description of the correlation between tau and A β topographies is accomplished using canonical correlation (50, 51). Canonical correlation is the multivariate generalization of the more familiar, for example, Pearson bivariate correlation. Canonical correlation identifies

the weighted average of ROIs in one distribution that is maximally correlated with another weighted average of ROIs in another distribution. The weighting vectors, or canonical vectors, define topographies.

Supplementary Material

Refer to Web version on PubMed Central for supplementary material.

Acknowledgments

Funding: This study was funded by NIH grants P50AG05681, P01AG003991, P01AG026276, 5P30NS048056, 2UL1TR000448, and 5RO1AG04343404 and NSF grant DMS1300280. Funding was also provided by Charles F. and Joanne Knight Alzheimer's Research Initiative, Hope Center for Neurological Disorders, and a generous support from Fred Simmons and Olga Mohan Fund and Paula and Rodger Riney Fund. Avid Radiopharmaceuticals (a wholly owned subsidiary of Eli Lilly) provided florbetapir doses and partial financial support for the florbetapir scanning sessions. Avid Radiopharmaceuticals also provided the precursor for T807 and radiopharmaceutical chemistry and technology for the Washington University Investigational New Drug, under which this study was performed.

References and Notes

1. Blennow K, de Leon MJ, Zetterberg H. Alzheimer's disease. *Lancet*. 2006; 368:387–403. [PubMed: 16876668]
2. Braak H, Braak E. Neuropathological stageing of Alzheimer-related changes. *Acta Neuropathol*. 1991; 82:239–259. [PubMed: 1759558]
3. Thal DR, Rüb U, Orantes M, Braak H. Phases of A β -deposition in the human brain and its relevance for the development of AD. *Neurology*. 2002; 58:1791–1800. [PubMed: 12084879]
4. Klunk WE, Engler H, Nordberg A, Wang Y, Blomqvist G, Holt DP, Bergström M, Savitcheva I, Huang GF, Estrada S, Ausén B, Debnath ML, Barletta J, Price JC, Sandell J, Lopresti BJ, Wall A, Koivisto P, Antoni G, Mathis CA, Långström B. Imaging brain amyloid in Alzheimer's disease with Pittsburgh Compound-B. *Ann Neurol*. 2004; 55:306–319. [PubMed: 14991808]
5. Mintun MA, LaRossa GN, Sheline YI, Dence CS, Lee SY, Mach RH, Klunk WE, Mathis CA, DeKosky ST, Morris JC. [¹¹C]PIB in a nondemented population: Potential antecedent marker of Alzheimer disease. *Neurology*. 2006; 67:446–452. [PubMed: 16894106]
6. Villemagne VL, Fodero-Tavoletti MT, Masters CL, Rowe CC. Tau imaging: Early progress and future directions. *Lancet Neurol*. 2015; 14:114–124. [PubMed: 25496902]
7. Hardy JA, Higgins GA. Alzheimer's disease: The amyloid cascade hypothesis. *Science*. 1992; 256:184–185. [PubMed: 1566067]
8. Jack CR Jr, Knopman DS, Jagust WJ, Petersen RC, Weiner MW, Aisen PS, Shaw LM, Vemuri P, Wiste HJ, Weigand SD, Lesnick TG, Pankratz VS, Donohue MC, Trojanowski JQ. Tracking pathophysiological processes in Alzheimer's disease: An updated hypothetical model of dynamic biomarkers. *Lancet Neurol*. 2013; 12:207–216. [PubMed: 23332364]
9. Bateman RJ, Xiong C, Benzinger TLS, Fagan AM, Goate A, Fox NC, Marcus DS, Cairns NJ, Xie X, Blazey TM, Holtzman DM, Santacruz A, Buckles V, Oliver A, Moulder K, Aisen PS, Ghetti B, Klunk WE, McDade E, Martins RN, Masters CL, Mayeux R, Ringman JM, Rossor MN, Schofield PR, Sperling RA, Salloway S, Morris JC. Dominantly Inherited Alzheimer Network, Clinical and biomarker changes in dominantly inherited Alzheimer's disease. *N Engl J Med*. 2012; 367:795–804. [PubMed: 22784036]
10. Perrin RJ, Fagan AM, Holtzman DM. Multimodal techniques for diagnosis and prognosis of Alzheimer's disease. *Nature*. 2009; 461:916–922. [PubMed: 19829371]
11. Musiek ES, Holtzman DM. Three dimensions of the amyloid hypothesis: Time, space and 'wingmen'. *Nat Neurosci*. 2015; 18:800–806. [PubMed: 26007213]

12. Giannakopoulos P, Herrmann FR, Bussière T, Bouras C, Kövari E, Perl DP, Morrison JH, Gold G, Hof PR. Tangle and neuron numbers, but not amyloid load, predict cognitive status in Alzheimer's disease. *Neurology*. 2003; 60:1495–1500. [PubMed: 12743238]
13. Gómez-Isla T, Price JL, Mc Keel DW Jr, Morris JC, Growdon JH, Hyman BT. Profound loss of layer II entorhinal cortex neurons occurs in very mild Alzheimer's disease. *J Neurosci*. 1996; 16:4491–4500. [PubMed: 8699259]
14. Ingelsson M, Fukumoto H, Newell KL, Growdon JH, Hedley-Whyte ET, Frosch MP, Albert MS, Hyman BT, Irizarry MC. Early A β accumulation and progressive synaptic loss, gliosis, and tangle formation in AD brain. *Neurology*. 2004; 62:925–931. [PubMed: 15037694]
15. Morris JC, Price JL. Pathologic correlates of nondemented aging, mild cognitive impairment, and early-stage Alzheimer's disease. *J Mol Neurosci*. 2001; 17:101–118. [PubMed: 11816784]
16. Marquié M, Normandin MD, Vanderburg CR, Costantino IM, Bien EA, Rycyna LG, Klunk WE, Mathis CA, Ikonomic MD, Debnath ML, Vasdev N, Dickerson BC, Gomperts SN, Growdon JH, Johnson KA, Frosch MP, Hyman BT, Gómez-Isla T. Validating novel tau positron emission tomography tracer [F-18]-AV-1451 (T807) on postmortem brain tissue. *Ann Neurol*. 2015; 78:787–800. [PubMed: 26344059]
17. Villain N, Chételat G, Grassiot B, Bourgeat P, Jones G, Ellis KA, Ames D, Martins RN, Eustache F, Salvado O, Masters CL, Rowe CC, Villemagne VL. Regional dynamics of amyloid- β deposition in healthy elderly, mild cognitive impairment and Alzheimer's disease: A voxelwise PiB-PET longitudinal study. *Brain*. 2012; 135:2126–2139. [PubMed: 22628162]
18. Hampel H, Bürger K, Teipel SJ, Bokde ALW, Zetterberg H, Blennow K. Core candidate neurochemical and imaging biomarkers of Alzheimer's disease. *Alzheimers Dement*. 2008; 4:38–48. [PubMed: 18631949]
19. Morris JC. The Clinical Dementia Rating (CDR): Current version and scoring rules. *Neurology*. 1993; 43:2412–2414.
20. Chien DT, Bahri S, Szardenings AK, Walsh JC, Mu F, Su MY, Shankle WR, Elizarov A, Kolb HC. Early clinical PET imaging results with the novel PHF-tau radioligand [F-18]-T807. *J Alzheimers Dis*. 2013; 34:457–468. [PubMed: 23234879]
21. Su Y, D'Angelo GM, Vlassenko AG, Zhou G, Snyder AZ, Marcus DS, Blazey TM, Christensen JJ, Vora S, Morris JC, Mintun MA, Benzinger TLS. Quantitative analysis of PiB-PET with FreeSurfer ROIs. *PLOS One*. 2013; 8:e73377. [PubMed: 24223109]
22. Su Y, Blazey TM, Snyder AZ, Raichle ME, Marcus DS, Ances BM, Bateman RJ, Cairns NJ, Aldea P, Cash L, Christensen JJ, Friedrichsen K, Hornbeck RC, Farrar AM, Owen CJ, Mayeux R, Brickman AM, Klunk W, Price JC, Thompson PM, Ghetti B, Saykin AJ, Sperling RA, Johnson KA, Schofield PR, Buckles V, Morris JC, Benzinger TLS. Dominantly Inherited Alzheimer Network, Partial volume correction in quantitative amyloid imaging. *Neuroimage*. 2015; 107:55–64. [PubMed: 25485714]
23. Sperling RA, Aisen PS, Beckett LA, Bennett DA, Craft S, Fagan AM, Iwatsubo T, Jack CR Jr, Kaye J, Montine TJ, Park DC, Reiman EM, Rowe CC, Siemers E, Stern Y, Yaffe K, Carrillo MC, Thies B, Morrison-Bogorad M, Wagster MV, Phelps CH. Toward defining the preclinical stages of Alzheimer's disease: Recommendations from the National Institute on Aging-Alzheimer's Association workgroups on diagnostic guidelines for Alzheimer's disease. *Alzheimers Dement*. 2011; 7:280–292. [PubMed: 21514248]
24. Jack CR Jr, Knopman DS, Weigand SD, Wiste HJ, Vemuri P, Lowe V, Kantarci K, Gunter JL, Senjem ML, Ivnik RJ, Roberts RO, Rocca WA, Boeve BF, Petersen RC. An operational approach to National Institute on Aging-Alzheimer's Association criteria for preclinical Alzheimer disease. *Ann Neurol*. 2012; 71:765–775. [PubMed: 22488240]
25. Lockhart R, Taylor J, Tibshirani RJ, Tibshirani R. A significance test for the lasso. *Ann Stat*. 2014; 42:413–468. [PubMed: 25574062]
26. Tibshirani R. Regression shrinkage and selection via the lasso. *J Roy Stat Soc B Met*. 1996; 58:267–288.
27. Zou H, Hastie T. Regularization and variable selection via the elastic net. *J Roy Stat Soc B*. 2005; 67:301–320.

28. Small GW, Kepe V, Ercoli LM, Siddarth P, Bookheimer SY, Miller KJ, Lavretsky H, Burggren AC, Cole GM, Vinters HV, Thompson PM, Huang SC, Satyamurthy N, Phelps ME, Barrio JR. PET of brain amyloid and tau in mild cognitive impairment. *N Engl J Med*. 2006; 355:2652–2663. [PubMed: 17182990]
29. Shin J, Lee SY, Kim SH, Kim YB, Cho SJ. Multitracer PET imaging of amyloid plaques and neurofibrillary tangles in Alzheimer's disease. *Neuroimage*. 2008; 43:236–244. [PubMed: 18694837]
30. Xia CF, Arteaga J, Chen G, Gangadharmath U, Gomez LF, Kasi D, Lam C, Liang Q, Liu C, Mocharla VP, Mu F, Sinha A, Su H, Szardenings AK, Walsh JC, Wang E, Yu C, Zhang W, Zhao T, Kolb HC. [¹⁸F]T807, a novel tau positron emission tomography imaging agent for Alzheimer's disease. *Alzheimers Dement*. 2013; 9:666–676. [PubMed: 23411393]
31. Fodero-Tavoletti MT, Okamura N, Furumoto S, Mulligan RS, Connor AR, McLean CA, Cao D, Rigopoulos A, Cartwright GA, O'Keefe G, Gong S, Adlard PA, Barnham KJ, Rowe CC, Masters CL, Kudo Y, Cappai R, Yanai K, Villemagne VL. ¹⁸F-THK523: A novel in vivo tau imaging ligand for Alzheimer's disease. *Brain*. 2011; 134:1089–1100. [PubMed: 21436112]
32. Chien DT, Szardenings AK, Bahri S, Walsh JC, Mu F, Xia C, Shankle WR, Lerner AJ, Su MY, Elizarov A, Kolb HC. Early clinical PET imaging results with the novel PHF-tau radioligand [F18]-T808. *J Alzheimers Dis*. 2014; 38:171–184. [PubMed: 23948934]
33. Maruyama M, Shimada H, Suhara T, Shinotoh H, Ji B, Maeda J, Zhang MR, Trojanowski JQ, Lee VMY, Ono M, Masamoto K, Takano H, Sahara N, Iwata N, Okamura N, Furumoto S, Kudo Y, Chang Q, Saido TC, Takashima A, Lewis J, Jang MK, Aoki I, Ito H, Higuchi M. Imaging of tau pathology in a tauopathy mouse model and in Alzheimer patients compared to normal controls. *Neuron*. 2013; 79:1094–1108. [PubMed: 24050400]
34. Okamura N, Furumoto S, Fodero-Tavoletti MT, Mulligan RS, Harada R, Yates P, Pejoska S, Kudo Y, Masters CL, Yanai K, Rowe CC, Villemagne VL. Non-invasive assessment of Alzheimer's disease neurofibrillary pathology using ¹⁸F-THK5105 PET. *Brain*. 2014; 137(Pt. 6):1762–1771. [PubMed: 24681664]
35. Villemagne VL, Furumoto S, Fodero-Tavoletti MT, Mulligan RS, Hodges J, Harada R, Yates P, Piguet O, Pejoska S, Doré V, Yanai K, Masters CL, Kudo Y, Rowe CC, Okamura N. In vivo evaluation of a novel tau imaging tracer for Alzheimer's disease. *Eur J Nucl Med Mol Imaging*. 2014; 41:816–826. [PubMed: 24514874]
36. Friston KJ, Frith CD, Liddle PF, Frackowiak RSJ. Functional connectivity: The principal-component analysis of large (PET) data sets. *J Cereb Blood Flow Metab*. 1993; 13:5–14. [PubMed: 8417010]
37. Hardy J, Duff K, Hardy KG, Perez-Tur J, Hutton M. Genetic dissection of Alzheimer's disease and related dementias: Amyloid and its relationship to tau. *Nat Neurosci*. 1998; 1:355–358. [PubMed: 10196523]
38. Clinton LK, Blurton-Jones M, Myczek K, Trojanowski JQ, LaFerla FM. Synergistic Interactions between A β , tau, and α -synuclein: Acceleration of neuropathology and cognitive decline. *J Neurosci*. 2010; 30:7281–7289. [PubMed: 20505094]
39. Fagan AM, Holtzman DM. Cerebrospinal fluid biomarkers of Alzheimer's disease. *Biomark Med*. 2010; 4:51–63. [PubMed: 20361010]
40. Maia LF, Kaeser SA, Reichwald J, Hruscha M, Martus P, Staufenbiel M, Jucker M. Changes in amyloid- β and Tau in the cerebrospinal fluid of transgenic mice overexpressing amyloid precursor protein. *Sci Transl Med*. 2013; 5:194re2.
41. Johnson DK, Storandt M, Morris JC, Galvin JE. Longitudinal study of the transition from healthy aging to Alzheimer disease. *Arch Neurol*. 2009; 66:1254–1259. [PubMed: 19822781]
42. Grober E, Buschke H, Crystal H, Bang S, Dresner R. Screening for dementia by memory testing. *Neurology*. 1988; 38:900–903. [PubMed: 3368071]
43. Rubin EH, Storandt M, Miller JP, Kinscherf DA, Grant EA, Morris JC, Berg L. A prospective study of cognitive function and onset of dementia in cognitively healthy elders. *Arch Neurol*. 1998; 55:395–401. [PubMed: 9520014]
44. Wechsler, D. WMS-R: Wechsler Memory Scale-Revised Manual. Harcourt Brace Jovanovich; San Antonio, TX: 1987.

45. Doppelt JE, Wallace WL. Standardization of the Wechsler adult intelligence scale for older persons. *J Abnorm Psychol.* 1955; 51:312–330. [PubMed: 13263050]
46. Goodglass, H., Kaplan, E. *The Assessment of Aphasia and Related Disorders.* Lea & Febiger; Philadelphia, PA: 1983.
47. Armitage, SG. *Psychological Monographs: General and Applied.* American Psychological Association; Washington, DC: 1946. An analysis of certain psychological tests used for the evaluation of brain injury.
48. Fagan AM, Mintun MA, Mach RH, Lee SY, Dence CS, Shah AR, LaRossa GN, Spinner ML, Klunk WE, Mathis CA, DeKosky ST, Morris JC, Holtzman DM. Inverse relation between in vivo amyloid imaging load and cerebrospinal fluid A β ₄₂ in humans. *Ann Neurol.* 2006; 59:512–519. [PubMed: 16372280]
49. Tarawneh R, D'Angelo G, Macy E, Xiong C, Carter D, Cairns NJ, Fagan AM, Head D, Mintun MA, Ladenson JH, Lee JM, Morris JC, Holtzman DM. Visinin-like protein-1: Diagnostic and prognostic biomarker in Alzheimer disease. *Ann Neurol.* 2011; 70:274–285. [PubMed: 21823155]
50. Roussas, GG. *A First Course in Mathematical Statistics.* Addison-Wesley Pub. Co.; Reading, MA: 1973.
51. Weatherburn, CE. *A First Course in Mathematical Statistics.* The Cambridge Univ Press; Cambridge, MA: 1946.

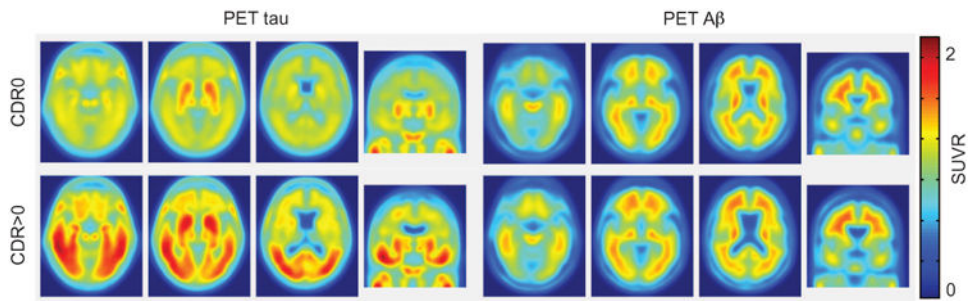


Fig. 1. Mean tau and A β topographies

Mean PET tau and A β topographies in participants with and without clinical AD. Mean tau SUVR images averaged across participants with CDR0 (top row) or CDR>0 (bottom row). Images are presented in radiological convention. These images show relatively low pathology in cognitively normal individuals and increased pathology in the cognitively impaired group.

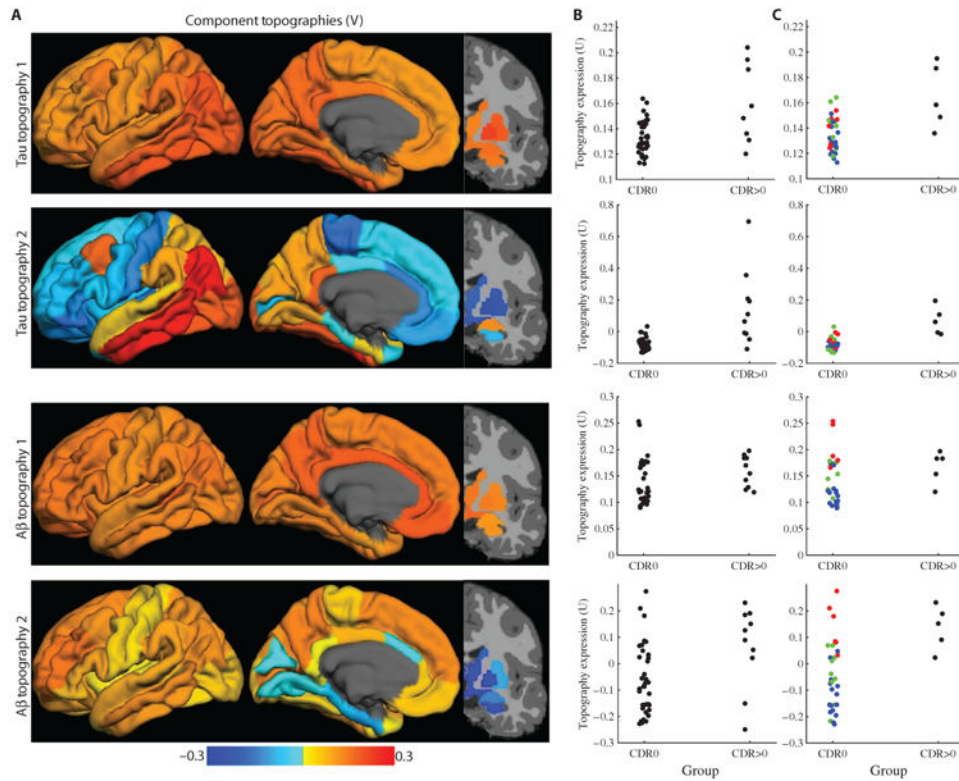


Fig. 2. PET tau and A β topographies are associated with disease severity
 (A) Right singular vectors (V) of the SVD of the regional PET tau and A β data represented as topographies. The dimensionality of both tau and A β was estimated to be two. The first topography for both PET species broadly represents the mean (that is, all regions are homogeneously weighted). The second tau topography is present within the temporal lobe, and the second A β topography is largely seen in frontal and parietal lobes. Color bar represents regional weights within each singular component. (B) The representations of these topographies in individuals (left singular vectors, U) (that is, the original data projected onto these topographies) varied with CDR for both PET tau topographies and the second PET A β topography. Increasing disease severity (measured using the CDR) is associated with increasing representation of the present topographies in individuals. However, particularly in the A β data, there was significant heterogeneity. (C) Similar graphs as (B), but only participants with CSF analysis were included. Color in the CDR0 group indicates preclinical disease status: blue corresponds to healthy aging (that is, no A β or tau pathology), green corresponds to stage 1, and red corresponds to stage 2 of the CDR.

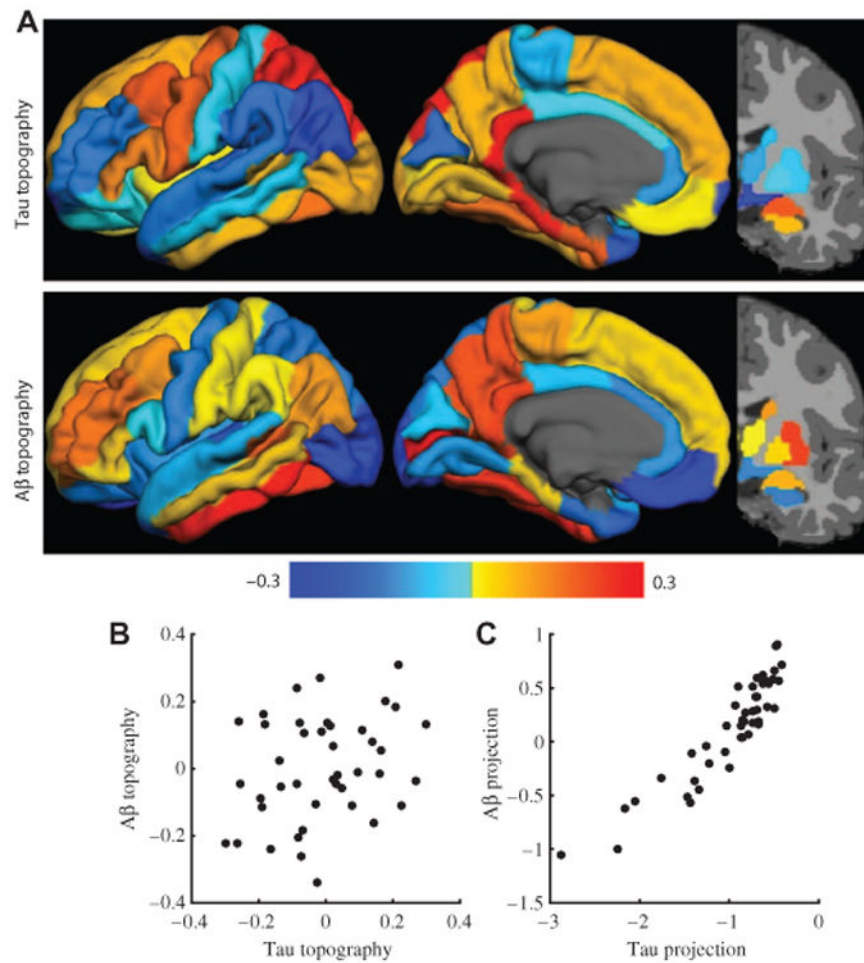


Fig. 3. Tau and A β in distinct topographies are strongly correlated

(A) Topographies for PET tau and PET A β imaging derived from canonical correlations that maximize the correlation between PET tau and A β deposition. (B) Scatter plot of the weights on each region demonstrates that PET tau and A β topographies are not significantly related. This is consistent with the typical topographies of tau and A β pathology being distinct. (C) The data projected onto the canonical variables revealed a robust positive relationship.

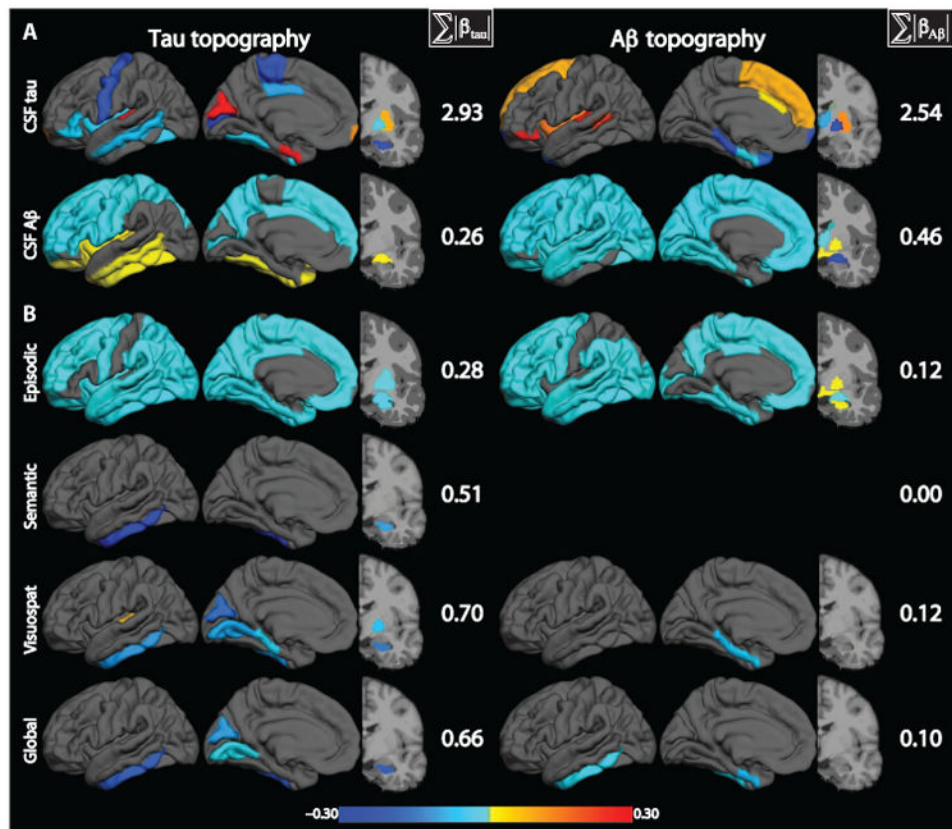


Fig. 4. CSF and neuropsychological performance are predicted by tau and A β topographies
 Each row represents a single penalized regression model where either CSF protein or neuropsychological performance is predicted. $\sum |\beta_{\text{tau}}|$ and $\sum |\beta_{\text{A}\beta}|$ represent the total predictive weight of tau and A β topographies, respectively. Gray regions have no predictive weight. **(A)** Penalized regression models that predict CSF tau and A β_{42} using tau and A β topographies. Because CSF A β_{42} is inversely related to amyloid burden, negative weights indicate regions where topographies predict worse CSF A β_{42} pathology. **(B)** Penalized regression models that predict neuropsychological performance in each examined domain: global, episodic, semantic, and visuospatial (visuospat). Regions with negative values (displayed in cool colors) are where more PET pathology predicts lower cognitive performance.

Table 1**Cohort demographics**

Demographics for the main cohort and two subsets. CSF, CSF assay; NP, neuropsychological testing; APOE, apolipoprotein ε.

	T807 + florbetapir	T807 + florbetapir + CSF	T807 + florbetapir + NP
<i>N</i>	46	36	40
Age (SD)	75.4 (6.6)	76.3 (6.6)	75.7 (6.5)
Male/female	30/16	25/11	27/13
CDR0/0.5/ 1	36/7/3	31/2/3	34/4/2
APOE ε4+	20	16	18

Author Manuscript

Author Manuscript

Author Manuscript

Author Manuscript