

# Low fibre intake is associated with gut microbiota alterations in chronic heart failure

Cristiane C.K. Mayerhofer<sup>1,2,3,4†</sup>, Martin Kummen<sup>2,4,5†</sup>, Kristian Holm<sup>2,3,4,5</sup>, Kaspar Broch<sup>1</sup>, Ayodeji Awoyemi<sup>3,6,7</sup>, Beate Vestad<sup>2,3</sup>, Christopher Storm-Larsen<sup>2,3,5</sup>, Ingebjørg Seljeflot<sup>3,6,7</sup>, Thor Ueland<sup>2,3,4</sup>, Pavol Bohov<sup>8</sup>, Rolf K. Berge<sup>8,9</sup>, Asbjørn Svardal<sup>8,9</sup>, Lars Gullestad<sup>1,3,7</sup>, Arne Yndestad<sup>2,3,4,7</sup>, Pål Aukrust<sup>2,3,4,10</sup>, Johannes R. Hov<sup>2,3,4,5,11‡</sup> and Marius Trøseid<sup>2,3,10\*‡</sup>

<sup>1</sup>Department of Cardiology, Oslo University Hospital Rikshospitalet, Oslo, Norway; <sup>2</sup>Research Institute of Internal Medicine, Oslo University Hospital Rikshospitalet, Oslo, Norway; <sup>3</sup>Institute of Clinical Medicine, Faculty of Medicine, University of Oslo, Oslo, Norway; <sup>4</sup>K. G. Jebsen Inflammation Research Centre, University of Oslo, Oslo, Norway; <sup>5</sup>Norwegian PSC Research Center, Division of Surgery, Inflammatory Medicine and Transplantation, Oslo University Hospital Rikshospitalet, Oslo, Norway; <sup>6</sup>Center for Clinical Heart Research, Department of Cardiology, Oslo University Hospital Ullevål, Oslo, Norway; <sup>7</sup>Center for Heart Failure Research, University of Oslo, Oslo, Norway; <sup>8</sup>Department of Clinical Science, University of Bergen, Bergen, Norway; <sup>9</sup>Department of Heart Disease, Haukeland University Hospital, Bergen, Norway; <sup>10</sup>Section of Clinical Immunology and Infectious diseases, Oslo University Hospital Rikshospitalet, Oslo, Norway; <sup>11</sup>Section of Gastroenterology, Division of Surgery, Inflammatory Medicine and Transplantation, Oslo University Hospital Rikshospitalet, Oslo, Norway

## Abstract

**Aims** Recent reports have suggested that patients with heart failure (HF) have an altered gut microbiota composition; however, associations with diet remain largely uninvestigated. We aimed to explore differences in the gut microbiota between patients with HF with reduced ejection fraction and healthy controls, focusing on associations with diet and disease severity.

**Methods and results** The microbiota composition of two cross-sectional cohorts (discovery,  $n = 40$  and validation,  $n = 44$ ) of patients with systolic HF and healthy controls ( $n = 266$ ) was characterized by sequencing of the bacterial 16S rRNA gene. The overall microbial community (beta diversity) differed between patients with HF and healthy controls in both cohorts ( $P < 0.05$ ). Patients with HF had shifts in the major bacterial phyla, resulting in a lower Firmicutes/Bacteroidetes (F/B) ratio than controls ( $P = 0.005$ ). Patients reaching a clinical endpoint (listing for heart transplant or death) had lower bacterial richness and lower F/B ratio than controls ( $P < 0.01$ ). Circulating levels of trimethylamine-*N*-oxide were associated with meat intake ( $P = 0.016$ ), but not with gut microbiota alterations in HF. Low bacterial richness and low abundance of several genera in the Firmicutes phylum were associated with low fibre intake.

**Conclusions** The gut microbiota in HF was characterized by decreased F/B ratio and reduced bacterial diversity associated with clinical outcome. The gut microbiota alterations in HF were partly related to low fibre intake, emphasizing the importance of diet as a covariate in future studies. Our data could provide a rationale for targeting the gut microbiota in HF with high-fibre diet.

**Keywords** Microbiota; Heart failure; Fibre intake; Dysbiosis; Gut leakage; Clinical outcome

Received: 14 August 2019; Revised: 15 October 2019; Accepted: 27 November 2019

\*Correspondence to: Marius Trøseid, Section of Clinical Immunology and Infectious diseases, Oslo University Hospital Rikshospitalet, Pb 4950 Nydalen, N-0424 Oslo, Norway.

Tel: +47 23072895; Fax: +47 23073928. Email: marius.troseid@medisin.uio.no

†Shared first authorship.

‡Shared senior authorship.

## Introduction

Heart failure (HF) is a major public health issue with increasing prevalence and high mortality and morbidity, at least partly related to an aging population. Disturbances in metabolic and inflammatory pathways seem to play a role in the development and progression of HF,<sup>1</sup> but the underlying mechanisms are not completely elucidated. The gut

microbiota, comprising the trillions of bacteria that reside in the gastrointestinal tract, may influence these pathways.<sup>2</sup> Indeed, host–microbiota interactions likely contribute to several diseases even outside the gut,<sup>3</sup> including cardiovascular and metabolic diseases.<sup>2</sup>

Years ago, it was suggested that the gut–heart axis played a role in the progression of HF. This theory originally focused on the decreased mucosal integrity caused by intestinal

ischaemia or congestion. A compromised mucosal barrier permits leakage of bacterial products, such as lipopolysaccharides (a component of the Gram-negative bacterial cell wall), across the gut wall, resulting in systemic inflammation.<sup>4–6</sup> More recent data suggest that gut microbiota composition and function differ between patients with HF and healthy subjects. Using traditional cultures, Pasini *et al.* reported an increased abundance of pathogenic bacteria and fungi in patients with HF,<sup>7</sup> while sequencing-based studies have identified depleted core microbiota, with reduced abundance of *Faecalibacterium* as well as functional changes in the microbiota related to decreased butyrate production in these patients.<sup>8–10</sup>

Diet is a crucial modulator of the gut microbiota. Nutrients can directly interact with colonic components, affecting not only their abundance but also their growth dynamics.<sup>11</sup> Dietary residues that enter the colon, such as complex carbohydrates (fibre), are substrate for fermentation that produces short-chain fatty acids. One of the end products of this microbiota-dependent metabolism is butyrate. Butyrate provides energy to the gut microbiota and the intestinal epithelium and serves as an important signalling molecule, for example, by inducing the expansion of colonic regulatory T cells.<sup>12</sup> Another diet-dependent and microbiota-dependent molecule is trimethylamine-*N*-oxide (TMAO), which is produced in the liver from trimethylamine, a by-product of the microbial metabolism of carnitine and phosphatidylcholine. TMAO is linked to atherosclerosis, and we and others have shown that this metabolite is associated with disease severity in patients with HF.<sup>13,14</sup>

We have recently shown that the gut microbiota signature in chronic HF is characterized by large compositional shifts with low bacterial richness and depletion of bacteria with butyrate-producing potential.<sup>15</sup> The aims of the present study were to (i) further explore the compositional and functional differences in the gut microbiota between patients with HF and healthy controls, including relationships between the microbiota composition and the aetiology of HF, and clinical and haemodynamic characteristics; (ii) investigate associations between dietary habits and the composition of the gut microbiota; and (iii) examine putative end products of diet–microbial interactions (TMAO and butyrate) in HF and their associations with patient diet and microbiome characteristics.

## Methods

### Participants

The study cohort has been briefly described previously.<sup>15</sup> We performed a cross-sectional collection of stool samples from two independent cohorts (*discovery cohort*,  $n = 40$  and

*validation cohort*,  $n = 44$ ) of patients with HF with reduced ejection fraction treated at the Department of Cardiology, Oslo University Hospital Rikshospitalet, Oslo, from July 2014 to December 2016. Healthy controls ( $n = 266$ ) were randomly selected from donors registered in the national Norwegian Bone Marrow Donor Registry (Oslo, Norway) and randomly allocated to the discovery ( $n = 133$ ) or validation cohort ( $n = 133$ ) for comparison with the respective HF patients. Follow-up data were available for patients in the discovery cohort only. Fasting plasma samples and food frequency questionnaires were available in the validation cohort only, and diet–microbiota–plasma interactions were therefore assessed in this cohort alone.

We included patients with stable HF with reduced ejection fraction according to current HF guidelines<sup>16</sup> with symptoms and signs of HF and a left ventricular (LV) ejection fraction  $< 40\%$  as determined by echocardiography within 15 days prior to inclusion in the study. All patients included had been stable in New York Heart Association (NYHA) functional class II–IV at least 6 months prior to inclusion. All study patients were on optimal medical therapy at inclusion. Participants with previous bowel resection, gastrointestinal stoma, or self-reported specific diets (e.g. vegan, vegetarian, and gluten-free and milk-free diets) were excluded. Patients who had used antibiotics in the 12 weeks preceding study enrolment were also excluded. Other exclusion criteria were acute coronary syndromes during the last 6 months and significant concomitant disease such as infection, autoimmune disorders, or malignancy. The patients were consecutively included in the study. The HF aetiology was based on disease history, coronary angiography, and echocardiography and in some cases, also on magnetic resonance imaging.

The study was approved by the Regional Committee for Medical and Health Research Ethics in South-Eastern Norway and conducted according to the Declaration of Helsinki. Written informed consent was obtained from all individuals.

### Stool sample collection, DNA extraction, sequencing, and bioinformatics

Stool samples were collected, DNA was extracted, and library preparations were performed as previously described<sup>17</sup> (for detailed information please see Supplementary Methods in Supporting Information). Sequencing of the V3–V4 region of the 16S rRNA gene was performed at the Norwegian Sequencing Centre (Oslo, Norway) using the Illumina MiSeq platform (Illumina, San Diego, California, USA). The Quantitative Insights Into Microbial Ecology version 1.9.1 was used for post-sequencing processing (more detailed information is given in the Supplementary Methods in Supporting Information).

## Food frequency questionnaires

At inclusion, the patients in the validation cohort ( $n = 37$ ) completed a self-administrated, validated Norwegian food frequency questionnaire, aiming to reflect dietary habits over the past year.<sup>18,19</sup> The questionnaire contained around 180 food items, with serving size alternatives specified in household units and calculated in grams using the software developed at the Institute for Nutrition Research, University of Oslo.<sup>18</sup>

## Biochemistry and blood sampling

Routine biochemical parameters were retrieved from hospital databases. Peripheral venous blood was collected in pyrogen-free tubes with EDTA as anticoagulant for the measurement of the levels of TMAO and butyrate (using liquid chromatography-tandem mass spectrometry) and a gas chromatograph equipped with an electron capture detector, respectively). Lipopolysaccharide-binding protein (LBP) and soluble CD14 (sCD14) were analysed using commercial kits. For further detailed information, please see Supplementary Methods in Supporting Information.

## Endpoints

The clinical endpoints in this study are all-cause mortality or listing for heart transplant.

## Statistical analysis

The Mann–Whitney  $U$  tests or Student's  $t$ -tests were applied for continuous variables depending on the distribution. Comparison of categorical variables was performed using the  $\chi^2$  test or Fisher's exact test where appropriate. False discovery rate was calculated in R according to Benjamini and Hochberg and denoted as  $Q_{FDR}$ . All other calculations were performed in SPSS (V.25; IBM, New York, USA). Clinical endpoints (all-cause mortality or listing for heart transplant) were only available in the discovery cohort, and dietary data were only available from the validation cohort. Otherwise, data from the two HF cohorts were combined for secondary confirmation of associations between microbiota measurements and clinical characteristics and for binary logistic regression analyses. Circulating metabolites (TMAO and butyrate) were not normally distributed and were therefore log-transformed before correlation analyses. For alpha diversity and relative abundances, non-parametric statistics were applied throughout. Alpha diversity (the bacterial richness measures Chao1 and observed operational taxonomic units [OTUs]) and beta diversity (weighted UniFrac) were

calculated in the Quantitative Insights Into Microbial Ecology, which was also used when comparing beta diversity using the permutational ANOVA method. There were no missing data for the microbiota analyses. In all correlation analyses, “ $n$ ” for each analysis is provided.

## Results

### Participant characteristics

Thirty-six of the patients (43 %) had ischaemic HF, and 48 patients (53%) had non-ischaemic HF (*Table 1*). Most of the patients in the non-ischaemic group had dilated cardiomyopathy ( $n = 44$ ). The average LV ejection fraction was  $26 \pm 8\%$  in the discovery cohort and  $30 \pm 6\%$  in the validation cohort, with corresponding end-diastolic LV volumes 297 (209–355) and 223 (192–266) mL, respectively. Peak tricuspid pressure gradient was measured in 60 patients, out of whom, 31 patients (52%) had a value above 30 mmHg, taken to represent pulmonary hypertension.<sup>20</sup> Furthermore, 52% of the patients had a ratio of the peak early mitral inflow velocity to the mitral annular early diastolic velocity ( $E/e'$ ) above 15, a surrogate for an elevated LV filling pressure.

### Differences in global microbiota composition and Firmicutes/Bacteroidetes ratio between patients with heart failure and controls

In the discovery, as well as in the validation cohort, the global microbial composition (beta diversity) differed significantly between patients with HF and healthy controls, although with considerable overlap between the groups (*Figure 1*). The overall difference was driven by the abundances of the two major phyla Firmicutes and Bacteroidetes. Firmicutes was less abundant and Bacteroidetes more abundant in patients with HF. To capture the overall compositional alterations, we calculated a dysbiosis index defined as the Firmicutes/Bacteroidetes ratio (F/B ratio). Patients with HF had a lower F/B ratio than controls (*Figure 2A–C*), and the difference between patients and controls remained significant after adjusting for age, gender, and body mass index (BMI) ( $P = 0.005$ ).

### Firmicutes/Bacteroidetes ratio and bacterial richness in relation to clinical and haemodynamic characteristics and clinical outcomes

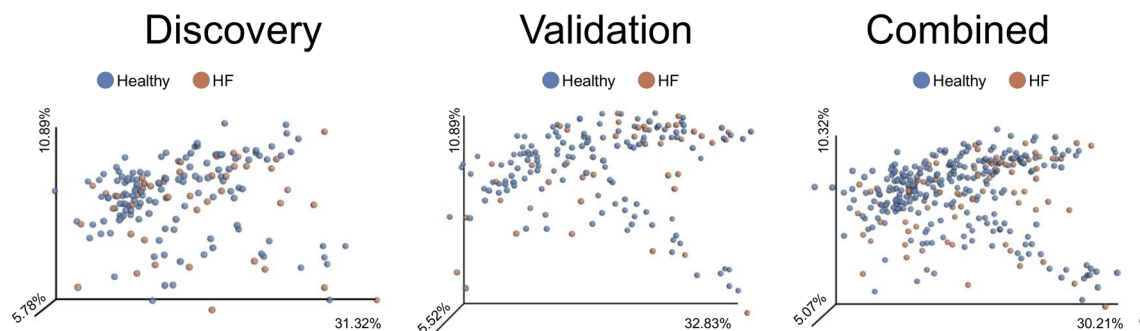
In the present study, we observed lower bacterial richness (*Figure 3A*) and a decreased F/B ratio (*Figure 3B*) in patients

**Table 1** Characteristics of the study population

	Heart failure <i>n</i> = 84		Healthy controls <i>n</i> = 266		HF versus HC <i>P</i> value
Age (years), median (min–max)	58.9	(39–74)	45.9	(30–61)	<0.001
Sex (male patient), <i>n</i> (%)	34	(40.5)	107	(40.2)	1.000
BMI (kg/m <sup>2</sup> ), mean (95% CI)	27.9	(26.8–29.1)	26.4	(25.9–26.9)	0.005
Current smoker, <i>n</i> (%)	28	(33.3)	31	(11.7)	<0.001
NYHA class, <i>n</i> (%)					
Class II	41	(48.8)			
Class III	38	(45.2)			
Class IV	5	(6.0)			
Ischaemic heart failure, <i>n</i> (%)	36	(42.9)			
History of MI, <i>n</i> (%)	32	(38.1)			
Hypertension, <i>n</i> (%)	25	(9.8)	11	(4.1)	<0.001
Diabetes, <i>n</i> (%)	18	(21.4)	2	(0.8)	<0.001
EF (%), mean ± SD	28.2	7.3			
LVEDV (mL), median (IQR)	240	(193–304)			
CO (L/min), median (IQR)	4.4	(3.7–4.9)			
TRG (mmHg), mean ± SD	32	12			
NT-proBNP, (ng/L) mean (95% CI)	2664.1	(1726.2–3602.0)			
eGFR (mL/min/1.73 m <sup>2</sup> ), mean (95% CI)	68.9	(64.3–73.5)			
HbA1c (mmol/mol), mean (95% CI)	6.1	(5.8–6.3)			
CRP (mg/L), mean (95% CI)	3.3	(2.3–4.4)			
Cholesterol (mmol/L), mean (95% CI)	4.3	(4.0–4.5)			
LDL (mmol/L), mean (95% CI)	2.6	(2.4–2.8)			
HDL (mmol/L), mean (95% CI)	1.3	(1.2–1.4)			
Medication, <i>n</i> (%)					
ACEi/ARB	80	(95.2)	10	(3.8)	<0.001
Beta blocker	81	(96.4)	2	(0.8)	<0.001
Diuretics	69	(82.1)			
Statins	52	(61.9)	11	(4.1)	<0.001
Digoxin	5	(6.0)			
Oral anticoagulation	42	(50.0)			
Calcium antagonists	2	(2.4)			
Insulin	10	(11.9)			

ACEi, angiotensin-converting enzyme inhibitor; ARB, angiotensin II receptor blocker; BMI, body mass index; CO, cardiac output; CRP, C-reactive protein; EF, ejection fraction; eGFR, estimated glomerular filtration rate; HDL, high-density lipoprotein; IQR, inter quartile range; LDL, low-density lipoprotein; LVEDV, left ventricular end-diastolic volume; MI, myocardial infarction; NT-proBNP, N-terminal pro B-type natriuretic peptide; NYHA, New York Heart Association; SD, standard deviation; TRG, peak tricuspid regurgitation gradient.

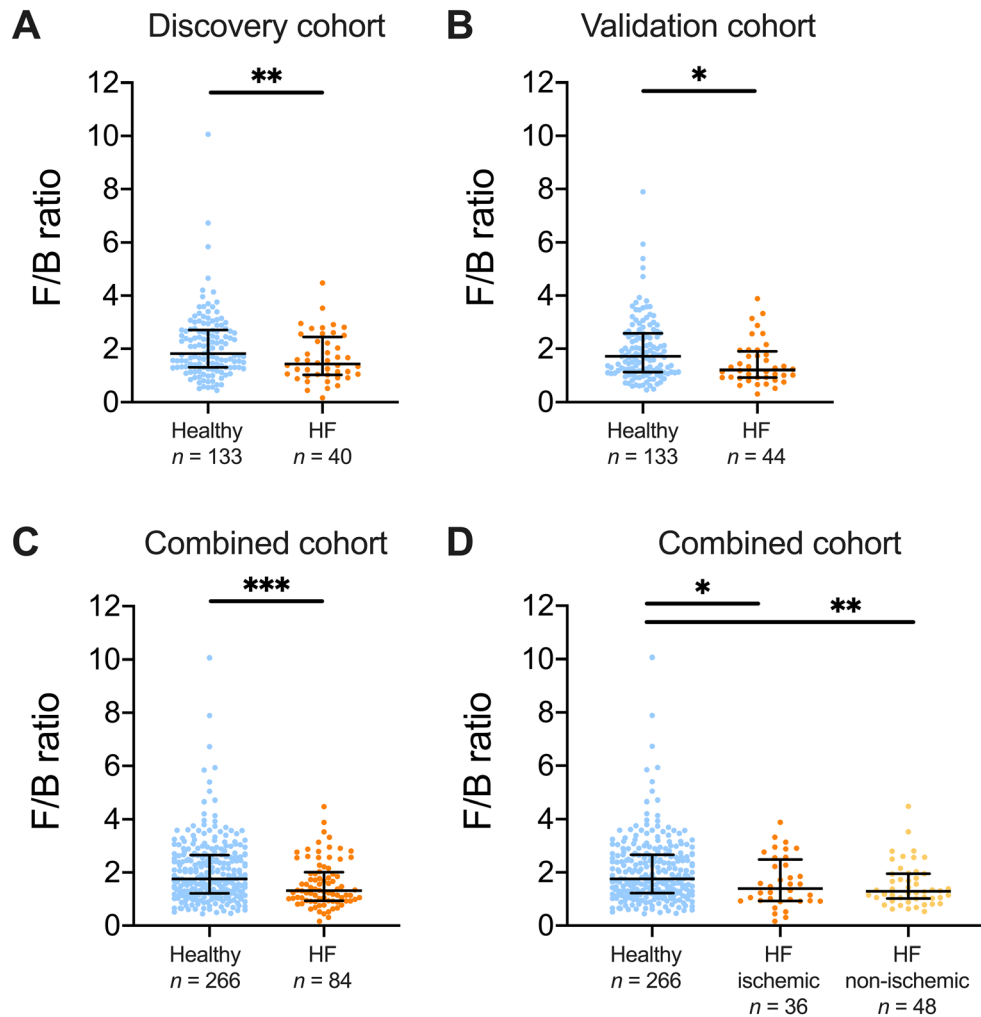
**Figure 1** Overall microbial community differed between heart failure patients (HF) and controls. Beta diversity plot (weighted UniFrac) showing differences in the overall bacterial community of HF patients and healthy controls (pseudo-*F* statistic for discovery, validation, and combined cohort: 2.2 [*P* = 0.042], 2.5 [*P* = 0.024], and 4.1 [*P* = 0.002], respectively). The percentage on the axis of the principal component analysis plot in the combined cohort corresponds to the percentage of variance explained by each axis.



who reached this endpoint during follow-up (18 out of 40 patients in the discovery cohort) (all *P* values < 0.01). In Supporting Information, Tables S1–S3, we provide an

overview of associations between markers of comorbidities and alterations in the microbiota composition and clinical outcomes. HDL cholesterol was associated with bacterial

**Figure 2** Large shifts in bacterial composition in heart failure (HF) patients. There was a significant reduction in the Firmicutes/Bacteroidetes ratio (F/B ratio) in both the (A) discovery, (B) validation, and (C) the combined cohort. (D) When stratifying the combined cohort of heart failure patients according to HF aetiology, healthy controls had a higher F/B ratio than patients with ischaemic HF and non-ischaemic HF. The ratio was numerically higher in patients with ischaemic than in non-ischaemic HF. Data shown as median and interquartile range. \* $P < 0.05$ , \*\* $P < 0.01$ , \*\*\* $P < 0.001$ .



richness (Chao 1) but not with clinical endpoints. There was a numerically higher proportion of non-ischaemic cardiomyopathy among the patients who died or were listed for heart transplant (13 out of 18 patients) than in patients who did not meet this endpoint (35 out of 66 patients,  $P$  for difference = 0.14).

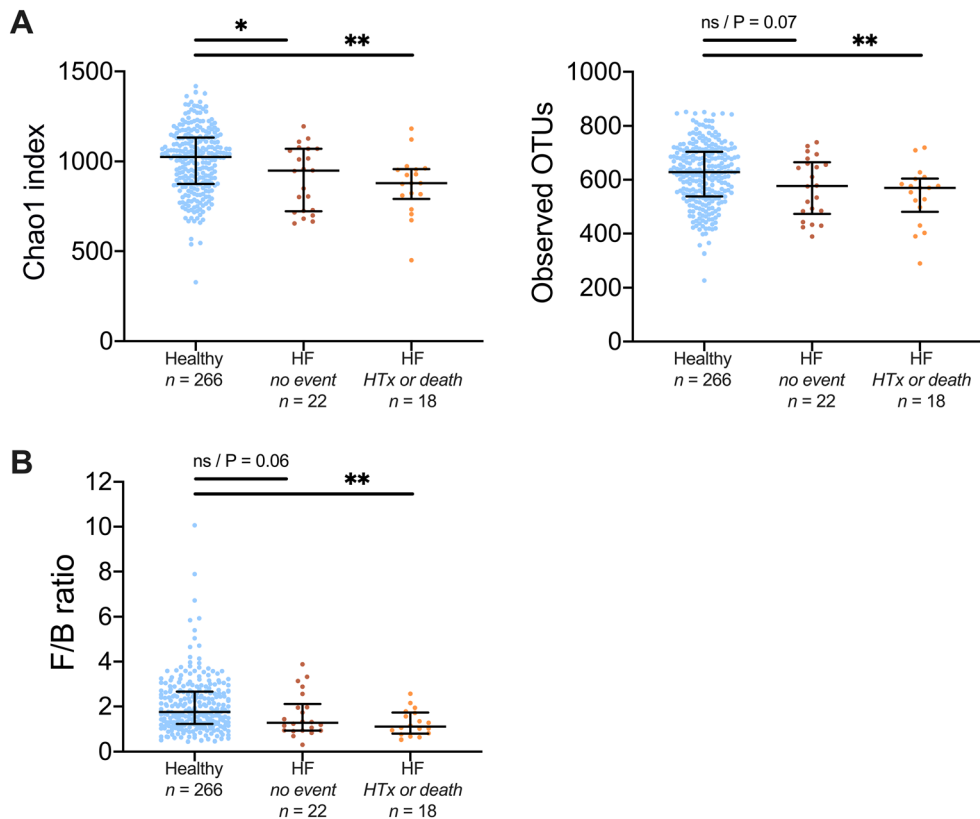
There were no significant correlations between the dysbiosis index (F/B ratio) and sex, age, or smoking status (Supporting Information, *Table S4*). Furthermore, we did not observe any associations between the dysbiosis index and NYHA class, N-terminal pro B-type natriuretic peptide (NT-proBNP), cardiac output, LV ejection fraction, LV end-diastolic volume, or the peak tricuspid regurgitation gradient (*Table 2*).

### Associations between the aetiology of heart failure and the Firmicutes/Bacteroidetes-ratio and bacterial richness

We next explored whether gut microbiota alterations were associated with HF aetiology. The F/B ratio was higher in healthy controls than in patients with ischaemic HF ( $P < 0.05$ ) and in patients with non-ischaemic HF ( $P < 0.01$ ) (*Figure 2D*). The F/B ratio was numerically higher in patients with ischaemic HF than in patients with non-ischaemic HF, but this difference was not significant. Compared with healthy controls, patients with non-ischaemic HF ( $n = 44$ ) had a significantly lower observed OTUs and lower Chao1 index, both of which are measures of bacterial richness (*Figure 4*).



**Figure 3** Depletion of bacteria in heart failure (HF) patients reaching an endpoint during follow-up. (A) There was a trend to decreasing measure of bacterial richness and clinical progression. (B) Patients with endpoint also showed lower Firmicutes/Bacteroidetes-ratio (F/B ratio) compared with healthy controls, in contrast to HF patients without endpoint during follow-up. Data in (A) shown as mean and 95% confidence interval, data in (B) shown as median and interquartile range. HTx, listing for heart transplant; NS, not significant; OTU, operational taxonomic units.



### The gut microbiota composition and intraindividual diversity in association with fibre intake

Table 3 shows associations between bacterial richness, HF-related dysbiosis (F/B ratio and the 15 genera differing between HF patients and controls), and fibre intake. Both Chao1 and observed OTUs correlated with fibre intake (Spearman's  $\rho$  0.38,  $P = 0.018$ ; Spearman's  $\rho$  0.34,  $P = 0.039$ ). Furthermore, the abundance of *Fusicatenibacter*, *Lachnospiraceae FCS020*, *Lachnospiraceae ND3007*, and *Anaerostipes*, several of which are known butyrate producers, correlated to fibre intake (Table 3).

### Relationship between the gut microbiota composition, diet-dependent and microbiota-dependent metabolites in plasma

Given the relationship between fibre intake and butyrate-producing genera in patients with HF, we also analysed the

relationships between circulating butyrate, diet, and HF-associated gut microbiota characteristics, without detecting any significant correlations (Table 4). As butyrate is a nutrient for colonocytes and important for gut barrier function, we also measured markers of gut leakage, LBP, and subsequent monocyte activation, sCD14. However, except for moderate negative correlations between sCD14 and *Bifidobacterium* ( $\rho = -0.27$ ,  $P = 0.014$ ) and between LBP and *Lachnospiraceae NC2004* ( $\rho = -0.27$ ,  $P = 0.014$ ), gut leakage and monocyte activation markers did not correlate with HF-associated gut microbiota alterations (Supporting Information, Table S5).

In contrast to the intake of dietary fibre, meat intake and energy intake were not correlated with HF-associated gut microbiota characteristics (data not shown). As for the microbiota-dependent metabolite TMAO, there was a significant correlation with meat intake ( $r = 0.39$ ,  $P = 0.016$ ), but no association between TMAO levels and microbiota changes associated with HF. Energy intake and relative contribution from different dietary components are given in Supporting Information, Table S6.

**Table 2** Correlations between alpha diversity, Firmicutes/Bacteroidetes ratio and differentiating bacterial taxa, and haemodynamics and NT-proBNP in heart failure patients

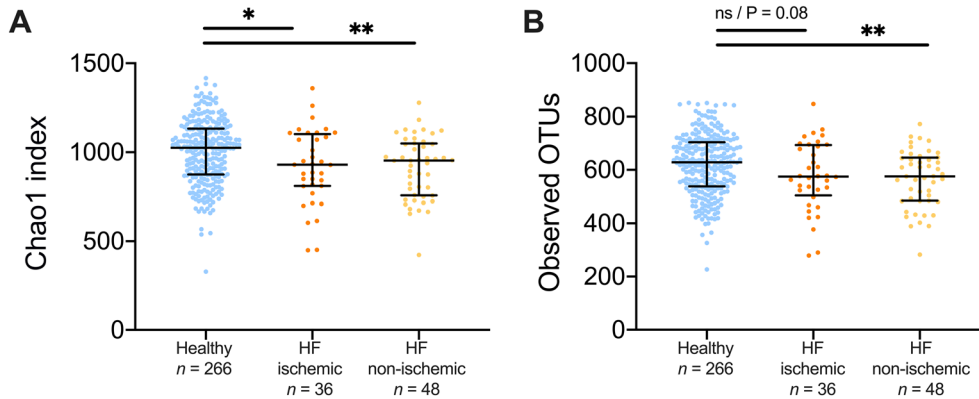
	LVEF (%) n = 83			LVEDV (ml) n = 82			CO (L/min) n = 80			TRP (mmHg) n = 60			NT-proBNP n = 84		
	rho	P value	Q <sub>FDR</sub>	rho	P value	Q <sub>FDR</sub>	rho	P value	Q <sub>FDR</sub>	rho	P value	Q <sub>FDR</sub>	rho	P value	Q <sub>FDR</sub>
Chao1	0.028	0.803	0.996	0.175	0.115	0.996	0.022	0.846	0.996	-0.066	0.617	0.996	0.005	0.964	0.996
Observed OTUs	0.001	0.996	0.996	0.187	0.092	0.996	-0.007	0.950	0.996	-0.058	0.658	0.996	0.026	0.818	0.996
FB-ratio	0.074	0.509	0.996	0.025	0.822	0.996	-0.011	0.925	0.996	0.052	0.694	0.996	0.121	0.273	0.996
<i>Uncultured bacterium</i>	0.176	0.111	0.996	0.002	0.986	0.996	0.091	0.425	0.996	-0.073	0.580	0.996	-0.058	0.599	0.996
<i>Prevotella (7)</i>	<b>0.242*</b>	<b>0.028</b>	<b>0.747</b>	-0.070	0.531	0.996	<b>0.348*</b>	<b>0.002</b>	<b>0.142</b>	<b>-0.275*</b>	<b>0.033</b>	<b>0.747</b>	-0.214	0.051	0.913
<i>Hungatella</i>	-0.162	0.145	0.996	<b>0.238*</b>	<b>0.031</b>	<b>0.747</b>	-0.008	0.944	0.996	0.099	0.452	0.996	0.073	0.508	0.996
<i>Succinilasticum</i>	-0.170	0.124	0.996	-0.094	0.402	0.996	-0.145	0.201	0.996	0.126	0.336	0.996	0.068	0.537	0.996
<i>Bifidobacterium</i>	0.096	0.390	0.996	0.042	0.709	0.996	-0.078	0.493	0.996	-0.029	0.826	0.996	-0.149	0.175	0.996
<i>Fusicatenibacter</i>	0.035	0.756	0.996	-0.059	0.598	0.996	-0.018	0.873	0.996	0.033	0.803	0.996	0.028	0.798	0.996
<i>Lachnospiraceae NC2004</i>	-0.080	0.472	0.996	0.028	0.805	0.996	-0.093	0.413	0.996	-0.100	0.445	0.996	-0.034	0.762	0.996
<i>Lachnospiraceae FCS020</i>	0.042	0.703	0.996	0.056	0.618	0.996	-0.044	0.699	0.996	-0.148	0.261	0.996	-0.056	0.613	0.996
<i>Pseudobutyrvibrio</i>	-0.028	0.799	0.996	-0.026	0.817	0.996	0.080	0.480	0.996	0.052	0.695	0.996	-0.093	0.401	0.996
<i>Lachnospiraceae ND3007</i>	-0.017	0.879	0.996	0.064	0.566	0.996	-0.012	0.913	0.996	0.021	0.876	0.996	0.029	0.795	0.996
<i>Blautia</i>	0.003	0.975	0.996	0.133	0.233	0.996	0.056	0.619	0.996	0.118	0.368	0.996	0.106	0.336	0.996
<i>Anaerostipes</i>	-0.012	0.917	0.996	0.011	0.923	0.996	-0.040	0.728	0.996	-0.017	0.896	0.996	0.090	0.415	0.996
<i>Eubacterium hallii group</i>	0.027	0.808	0.996	-0.027	0.810	0.996	-0.156	0.167	0.996	0.006	0.963	0.996	0.159	0.148	0.996
<i>Coproccoccus (3)</i>	0.018	0.870	0.996	0.082	0.461	0.996	-0.089	0.433	0.996	-0.092	0.483	0.996	-0.001	0.990	0.996
<i>Faecalibacterium</i>	-0.049	0.660	0.996	0.070	0.530	0.996	-0.050	0.658	0.996	0.216	0.097	0.996	0.163	0.138	0.996

Correlations between alpha diversity (Chao1 and observed OTUs), Firmicutes/Bacteroidetes ratio, and differentiating bacterial taxa and haemodynamics (LVEF, LVEDV, CO, and TRP) and NT-proBNP in heart failure patients. Orange colored taxa are high, while blue colored taxa are low in patients with heart failure compared with healthy controls (see also Table 2).

B, Bacteroidetes; CO, cardiac output; LVEF, left ventricle ejection fraction; F, Firmicutes; FDR, false discovery rate; LVEDV, left ventricular end-diastolic volume; NT-proBNP, N-terminal pro b-type natriuretic peptide; OTUs, operational taxonomic units; TRP, tricuspidal regurgitation pressure. Spearman's rank correlations were performed.

\*P values < 0.05 in bold.

**Figure 4** Gut bacterial richness is reduced in non-ischaeamic heart failure patients (HF). Non-ischaeamic HF showed significantly decreased number of observed OTUs compared with healthy controls, in contrast to ischaemic HF, while both groups showed decreased Chao1 index. Data shown as mean and 95% confidence interval. NS, not significant; OTU, operational taxonomic unit. \* $P < 0.05$ , \*\* $P < 0.01$ .



**Table 3** Correlations between alpha diversity, Firmicutes/Bacteroidetes-ratio and differentiating bacterial taxa, and fibre intake in heart failure patients

	Fibre intake (g/day) n = 37	
	rho	P value
Chao1	<b>0.386</b>	<b>0.018</b>
Observed OTUs	<b>0.341</b>	<b>0.039</b>
FB-ratio	0.186	0.271
<i>Uncultured bacterium</i>	-0.078	0.648
<i>Prevotella (7)</i>	0.125	0.460
<i>Hungatella</i>	-0.074	0.662
<i>Succinlasticum</i>	-0.047	0.784
<i>Bifidobacterium</i>	0.324	0.050
<i>Fusicatenibacter</i>	<b>0.413</b>	<b>0.011</b>
<i>Lachnospiraceae NC2004</i>	0.322	0.052
<i>Lachnospiraceae FCS020</i>	<b>0.373</b>	<b>0.023</b>
<i>Pseudobutyrvibrio</i>	0.058	0.732
<i>Lachnospiraceae ND3007</i>	<b>0.393</b>	<b>0.016</b>
<i>Blautia</i>	-0.074	0.662
<i>Anaerostipes</i>	<b>0.473</b>	<b>0.003</b>
<i>Eubacterium hallii group</i>	0.037	0.829
<i>Coproccoccus (3)</i>	0.125	0.461
<i>Faecalibacterium</i>	-0.208	0.216

Correlations between alpha diversity (Chao1 and observed OTUs), Firmicutes/Bacteroidetes-ratio, and differentiating bacterial taxa and fibre intake in heart failure patients. Orange colored taxa are high, while blue colored taxa are low in patients with heart failure compared with healthy controls. B, Bacteroidetes; F, Firmicutes; OTUs, operational taxonomic units. Spearman's rank correlations were performed. P values < 0.05 in bold.

## Discussion

We have previously reported data from this study population, consisting of two cohorts comprising a total of 84 well-treated patients with HF and 266 control subjects, showing that the gut microbiota composition differed considerably between patients and controls.<sup>15</sup> In the present study, we extended these findings to show that (i) the overall microbial

**Table 4**

	TMAO n = 37		Butyrate n = 37	
	r	P value	r	P value
Fibre intake (g/day)	-0.075	0.660	0.197	0.242
Meat intake (g/day)	<b>0.393*</b>	<b>0.016</b>	0.092	0.587
Energy intake (kJ/day)	0.087	0.609	0.235	0.161

Correlations with (log-transformed) plasma metabolites are given as Pearson's r with P values < 0.05 in bold. TMAO, Trimethylamine-N-oxide. Correlations between the daily intake of dietary fibre, meat and energy, and the microbiota-dependent metabolites TMAO and butyrate

community (beta diversity) differed between HF patients and controls; (ii) patients with HF had a lower abundance of bacteria in the Firmicutes phylum and a higher abundance of Bacteroidetes (a decreased F/B ratio); (iii) patients who reached an endpoint during follow-up (listing for heart transplantation or all-cause mortality) had lower bacterial richness and F/B ratio; and (iv) a lower fibre intake correlated with dysbiosis in HF, including a lower bacterial richness and a lower abundance of four of the bacterial genera that were reduced in HF.

We found an increased abundance of microbes belonging to the phylum Bacteroidetes and a lower abundance of Firmicutes, and that a low F/B ratio was associated with a poor prognosis in HF. Altered F/B ratio has previously been observed in other diseases, e.g., type 2 diabetes<sup>21</sup> and obesity.<sup>22</sup> Of note, we found no association between the F/B ratio and BMI, and the difference between patients and controls remained significant after adjusting for age, gender, and BMI.

Taken together with contemporary studies from Japan, China, and Germany,<sup>8-10</sup> our results firmly establish that the gut microbiota is altered in patients with HF. A common finding in these studies is the relative reduction in taxa from the



Lachnospiraceae or Ruminococcaceae family (both belonging to the Firmicutes phylum), known for their capacity of producing the short-chain fatty acid butyrate. However, a limitation of the studies published so far is the lack of dietary data. A novel aspect of the present study was the prospective, structured characterization of the patients' diet in the validation cohort. Fibre intake was positively correlated with microbial diversity and with the abundance of some of the genera in the Firmicutes phylum that are altered in HF, including several microbes from the Lachnospiraceae family with capacity to metabolize fibre into butyrate.

Butyrate serves as the main energy source for colonocytes, exerts local anti-inflammatory effects in the gut wall, and has an important role in maintaining the gut barrier,<sup>23</sup> although we could not detect any association between HF-related dysbiosis and markers of gut leakage, with the exception of a weak negative correlation between LBP and *Lachnospiraceae NC2004*. However, in a previous paper from this cohort, we found an association between several genera of the Lachnospiraceae family and a marker of T cell activation, particularly in patients reaching a clinical endpoint.<sup>17</sup> High amounts of dietary fibre intake have been previously reported to significantly reduce incidence and mortality from cardiovascular disease.<sup>24</sup> Taken together, our two studies from the present cohort could imply that a reduced fibre intake and, in consequence, a diminished bacterial production of butyrate could represent a link between diet, gut microbiota alterations, and low-grade inflammation with potential relevance for progression of HF. However, markers of gut leakage did not correlate to a large degree with HF-related gut microbiota alterations.

In line with our findings, a recent study showed that total fibre intake was significantly associated with overall microbial community composition in 76 presumably healthy individuals.<sup>25</sup> Although associations between dietary fibre and microbiota composition are not unique to HF, it is striking that some of the dysbiosis observed in HF is related to low fibre intake. However, the lack of dietary data in the control group prevents us from adjusting HF-related dysbiosis for fibre intake, which is a clear limitation of our study. Furthermore, dietary data could be a major confounder also in previous microbiota studies and should be included when planning future studies. Our finding, if confirmed, could potentially even provide a rationale for targeting the gut microbiome with high-fibre diet in HF patients.

The diet-dependent and microbiota-dependent metabolite TMAO has in many studies been associated with cardiovascular disease.<sup>13,14</sup> However, none of the published microbiome studies in HF<sup>8–10</sup> have so far reported data on TMAO in association to HF-related microbiota alterations. Of note, we found no association between TMAO levels and HF-related dysbiosis. In contrast, TMAO was associated with meat intake, probably reflecting that meat, in addition to other dietary sources is a major contributor to the generation of the

TMAO precursor trimethylamine, which is generated by microbial conversion of dietary choline, phosphatidylcholine, and carnitine.<sup>26</sup> These results confirm the findings of a recent crossover study, which demonstrated an association between red meat and raised TMAO levels.<sup>27</sup> Our data suggest that TMAO is more related to dietary patterns than to microbiota alterations in HF, again emphasizing the importance of including dietary data in microbiota-related studies.

We found no association between the gut microbiota composition and cardiac function as measured by echocardiography, NT-proBNP, and NYHA functional class. Nevertheless, some of the alterations in the gut microbiota were associated with an adverse outcome. Hence, our findings challenge the view that the altered gut microbiota in HF is merely a consequence of congestion and intestinal ischaemia,<sup>28</sup> although we did not investigate intestinal congestion per se. Our findings, in light of other recently published studies<sup>8–10,15</sup> could suggest an independent role for the gut microbiota in the progression of HF, not directly related to haemodynamic changes, and that the changes are not just a reflection of HF severity.

Of potential importance, the HF-related dysbiosis seemed to be particularly pronounced in patients with a non-ischaemic aetiology. Although the present study did not have sufficient power to detect significant differences between ischaemic and non-ischaemic HF, our findings could indicate that the HF-related dysbiosis is not merely a reflection of atherosclerosis. Most of the patients with a non-ischaemic aetiology had idiopathic dilated cardiomyopathy, where metabolic signatures have been proposed to be altered by the microbiome, although knowledge is so far sparse.<sup>29</sup> In light of our findings, we propose that gut microbiota alterations should be investigated as a potentially contributing or aggravating factor in these patients. Adequately powered studies with multiomic analyses (genomics, metagenomics, proteomics, metabolomics) could be important first steps for identifying relevant pathways in this group of HF patients.

Our study has some limitations. As this study is associative by nature, we cannot state any causal relationship in the results that we found. A cause–effect relationship would have to be shown in a prospective controlled study. Patients' diet was neither controlled nor monitored, making it a relevant confounder, and food frequency questionnaires were self-reported. Cases and controls were not perfectly matched. The younger age of the controls may explain differences in diversity measures. However, the main results of the present study were robust to multivariable regressions, and microbial diversity does not necessarily decrease with age.<sup>30</sup> The study size is moderate, increasing the risk of not detecting true differences among less frequent microbes. In particular, the number of clinical endpoints was low, and follow-up data should be regarded as exploratory. There are also differences in disease severity between the two cohorts of HF patients

that could affect our ability to discover relevant associations. However, differences found in both cohorts following a two-stage strategy should contribute to the robustness of the main findings in this study.

In summary, our study an altered gut microbiota composition in patients with chronic, systolic HF, mostly driven by changes in the two major phyla Firmicutes and Bacteroidetes, resulting in a decreased F/B ratio. These changes were to some degree associated with aetiology and clinical outcomes. Of note, the compositional changes and the reduced microbial richness were partly associated with a reduced fibre intake. Thus, dietary patterns should be included in future studies, both as covariates and potential treatment targets.

## Acknowledgements

Liv Wenche Torbjørnsen is acknowledged for help at the Norwegian PSC Research Center, Professor Benedicte A. Lie and the Norwegian Bone Marrow Donor Registry are acknowledged for providing access to healthy controls. Karianne Moss Hansen is acknowledged for help with patient recruitment. Torunn Eide is acknowledged for excellent technical assistance.

## Conflict of Interest

None declared.

## References

1. Aukrust P, Yndestad A, Ueland T, Damas JK, Gullestad L. Anti-inflammatory trials in chronic heart failure. *Heart Fail Monit* 2006; **5**: 2–9.
2. Sonnenburg JL, Bäckhed F. Diet–microbiota interactions as moderators of human metabolism. *Nature*. 2016; **535**: 56–64.
3. Lynch SV, Pedersen O. The human intestinal microbiome in health and disease. *N Engl J Med* 2016; **375**: 2369–2379.
4. Charalambous BM, Stephens RC, Feavers IM, Montgomery HE. Role of bacterial endotoxin in chronic heart failure: the gut of the matter. *Shock* 2007; **28**: 15–23.
5. Sandek A, Anker SD, von Haehling S. The gut and intestinal bacteria in chronic heart failure. *Curr Drug Metab* 2009; **10**: 22–28.
6. Sandek A, Bauditz J, Swidsinski A, Buhner S, Weber-Eibel J, von Haehling S, Schroedl W, Karhausen T, Doehner W, Rauchhaus M, Poole-Wilson P, Volk HD, Lochs H, Anker SD. Altered intestinal function in patients with chronic heart failure. *J Am Coll Cardiol* 2007; **50**: 1561–1569.
7. Pasini E, Aquilani R, Testa C, Baiardi P, Angioletti S, Boschi F, Verri M, Dioguardi F. Pathogenic gut flora in patients with chronic heart failure. *JACC Heart Fail* 2016; **4**: 220–227.
8. Luedde M, Winkler T, Heinsen FA, Ruhlemann MC, Spehlmann ME, Bajrovic A, Lieb W, Franke A, Ott SJ, Frey N. Heart failure is associated with depletion of core intestinal microbiota. *ESC Heart Fail* 2017; **4**: 282–290.
9. Kamo T, Akazawa H, Suda W, Saga-Kamo A, Shimizu Y, Yagi H, Liu Q, Nomura S, Naito AT, Takeda N, Harada M, Toko H, Kumagai H, Ikeda Y, Takimoto E, Suzuki JI, Honda K, Morita H, Hattori M, Komuro I. Dysbiosis and compositional alterations with aging in the gut microbiota of patients with heart failure. *PLoS One* 2017; **12**: e0174099.
10. Cui X, Ye L, Li J, Jin L, Wang W, Li S, Bao M, Wu S, Li L, Geng B, Zhou X, Zhang J, Cai J. Metagenomic and metabolomic analyses unveil dysbiosis of gut microbiota in chronic heart failure patients. *Sci Rep* 2018; **8**: 635.
11. Korem T, Zeevi D, Suez J, Weinberger A, Avnit-Sagi T, Pompan-Lotan M, Matot E, Jona G, Harmelin A, Cohen N, Sirota-Madi A, Thaiss CA, Pevsner-Fischer M, Sorek R, Xavier RJ, Elinav E, Segal E. Growth dynamics of gut microbiota in health and disease inferred from single metagenomic samples. *Science* 2015; **349**: 1101–1106.
12. Smith PM, Howitt MR, Panikov N, Michaud M, Gallini CA, Bohlooly YM, Glickman JN, Garrett WS. The microbial metabolites, short-chain fatty acids, regulate colonic Treg cell homeostasis. *Science* 2013; **341**: 569–573.
13. Trøseid M, Ueland T, Hov JR, Svandal A, Gregersen I, Dahl CP, Aakhus S, Gude E, Bjørndal B, Halvorsen B, Karlsen TH, Aukrust P, Gullestad L, Berge RK, Yndestad A. Microbiota-dependent metabolite trimethylamine-N-oxide is

## Funding

This work was supported by the Norwegian Health Association (6782 to C.C.K.M), the Norwegian Research Council (240787/F20 to J.R.H.), and the Regional Health Authorities South-Eastern Norway (2016067 to M.K.)

## Supporting information

Additional supporting information may be found online in the Supporting Information section at the end of the article.

**Table S1.** Comparison of parameters of co-morbidity in the HF cohort without events and with events.

**Table S2.** Comparison of parameters of co-morbidity in the HF cohort across Chao 1 tertiles.

**Table S3.** Comparison of parameters of co-morbidity in the HF cohort across F/B tertiles.

**Table S4.** Correlations between bacterial richness and Firmicutes/Bacteroidetes-ratio, and age, BMI, sex and smoking status.

**Table S5.** Correlation analyses of microbiota data, renal function (eGFR), albumin and gut leakage markers (sCD14 and LPB).

**Table S6.** Energy intake and relative contribution from different dietary components in the validation cohort.

- associated with disease severity and survival of patients with chronic heart failure. *J Intern Med* 2015; **277**: 717–726.
14. Tang WHW, Wang Z, Fan Y, Levison B, Hazen JE, Donahue LM, Wu Y, Hazen SL. Prognostic value of elevated levels of intestinal microbe-generated metabolite trimethylamine-N-oxide in patients with heart failure: refining the gut hypothesis. *J Am Coll Cardiol* 2014; **64**: 1908–1914.
  15. Kummen M, Mayerhofer CCK, Vestad B, Broch K, Awoyemi A, Storm-Larsen C, Ueland T, Yndestad A, Hov JR, Trøseid M. Gut microbiota signature in heart failure defined from profiling of 2 independent cohorts. *J Am Coll Cardiol* 2018; **71**: 1184–1186.
  16. Ponikowski P, Voors AA, Anker SD, Bueno H, Cleland JGF, Coats AJS, Falk V, González-Juanatey JR, Harjola VP, Jankowska EA, Jessup M, Linde C, Nihoyannopoulos P, Parissis JT, Pieske B, Riley JP, Rosano GMC, Ruilope LM, Ruschitzka F, Rutten FH, Van der Meer P. 2016 ESC guidelines for the diagnosis and treatment of acute and chronic heart failure. *Revista espanola de cardiologia (English ed)* 2016; **69**: 1167.
  17. Kummen M, Holm K, Anmarkrud JA, Nygard S, Vesterhus M, Hoivik ML, Trøseid M, Marschall HU, Schruppf E, Moum B, Røsjø H. The gut microbial profile in patients with primary sclerosing cholangitis is distinct from patients with ulcerative colitis without biliary disease and healthy controls. *Gut* 2017; **66**: 611–619.
  18. Andersen LF, Solvoll K, Johansson LR, Salminen I, Aro A, Drevon CA. Evaluation of a food frequency questionnaire with weighed records, fatty acids, and alpha-tocopherol in adipose tissue and serum. *Am J Epidemiol* 1999; **150**: 75–87.
  19. Andersen LF, Veierod MB, Johansson L, Sakhi A, Solvoll K, Drevon CA. Evaluation of three dietary assessment methods and serum biomarkers as measures of fruit and vegetable intake, using the method of triads. *Br J Nutr* 2005; **93**: 519–527.
  20. Farmakis D, Aessopos A. Echocardiographic evaluation of pulmonary artery pressure in patients with heart failure. *J Am Coll Cardiol* 2012; **60**: 83–84.
  21. Larsen N, Vogensen FK, van den Berg FW, Nielsen DS, Andreasen AS, Pedersen BK, Al-Soud WA, Sørensen SJ, Hansen LH, Jakobsen M. Gut microbiota in human adults with type 2 diabetes differs from non-diabetic adults. *PLoS One* 2010; **5**: e9085.
  22. Ley RE, Backhed F, Turnbaugh P, Lozupone CA, Knight RD, Gordon JI. Obesity alters gut microbial ecology. *Proc Natl Acad Sci U S A* 2005; **102**: 11070–11075.
  23. Chen L, Sun M, Wu W, Yang W, Huang X, Xiao Y, Ma C, Xu L, Yao S, Liu Z, Cong Y. Microbiota metabolite butyrate differentially regulates Th1 and Th17 cells' differentiation and function in induction of colitis. *Inflamm Bowel Dis* 2019; **25**: 1450–1461.
  24. McRae MP. Dietary fiber is beneficial for the prevention of cardiovascular disease: an umbrella review of meta-analyses. *J Chiropr Med* 2017; **16**: 289–299.
  25. Lin D, Peters BA, Friedlander C, Freiman HJ, Goedert JJ, Sinha R, Miller G, Bernstein MA, Hayes RB, Ahn J. Association of dietary fibre intake and gut microbiota in adults. *Br J Nutr* 2018; **120**: 1014–1022.
  26. Koeth RA, Wang Z, Levison BS, Buffa JA, Org E, Sheehy BT, Britt EB, Fu X, Wu Y, Li L, Smith JD, DiDonato J, Chen J, Li H, Wu GD, Lewis JD, Warrier M, Brown JM, Krauss RM, Tang WH, Bushman FD, Lusis AJ, Hazen SL. Intestinal microbiota metabolism of L-carnitine, a nutrient in red meat, promotes atherosclerosis. *Nat Med* 2013; **19**: 576–585.
  27. Wang Z, Bergeron N, Levison BS, Li XS, Chiu S, Jia X, Koeth RA, Li L, Wu Y, Tang WHW, Krauss RM, Hazen SL. Impact of chronic dietary red meat, white meat, or non-meat protein on trimethylamine N-oxide metabolism and renal excretion in healthy men and women. *Eur Heart J* 2019; **40**: 583–594.
  28. Nagatomo Y, Tang WH. Intersections between microbiome and heart failure: revisiting the gut hypothesis. *J Card Fail* 2015; **21**: 973–980.
  29. Nomura S. Genetic and non-genetic determinants of clinical phenotypes in cardiomyopathy. *J Cardiol* 2019; **73**: 187–190.
  30. Odamaki T, Kato K, Sugahara H, Hashikura N, Takahashi S, Xiao JZ, Abe F, Osawa R. Age-related changes in gut microbiota composition from newborn to centenarian: a cross-sectional study. *BMC Microbiol* 2016; **16**: 90.