

Review Article



Chemoresistance in ovarian cancer: exploiting cancer stem cell metabolism

Shan-Shan Li , Jing Ma , Alice S. T. Wong

School of Biological Sciences, The University of Hong Kong, Hong Kong, China

OPEN ACCESS

Received: Feb 1, 2018

Accepted: Feb 1, 2018

Correspondence to

Alice S. T. Wong

School of Biological Sciences, Kadoorie Biological Sciences Building, The University of Hong Kong, Pok Fu Lam Road, Hong Kong 999077, China.
E-mail: awong1@hku.hk

Copyright © 2018. Asian Society of Gynecologic Oncology, Korean Society of Gynecologic Oncology

This is an Open Access article distributed under the terms of the Creative Commons Attribution Non-Commercial License (<https://creativecommons.org/licenses/by-nc/4.0/>) which permits unrestricted non-commercial use, distribution, and reproduction in any medium, provided the original work is properly cited.

ORCID iDs

Shan-Shan Li
<https://orcid.org/0000-0002-4092-4879>
Jing Ma
<https://orcid.org/0000-0001-6347-8552>
Alice S. T. Wong
<https://orcid.org/0000-0002-0676-6475>

Funding

This study was supported by the Hong Kong Research Grant Council grants 17141216 and C1013-15G. Alice S. T. Wong is a recipient of the Croucher Senior Fellowship.

Conflict of Interest

No potential conflict of interest relevant to this article was reported.

ABSTRACT

Ovarian cancer is most deadly gynecologic malignancies worldwide. Chemotherapy is the mainstay treatment for ovarian cancer. Despite the initial response is promising, frequent recurrence in patients with advanced diseases remains a therapeutic challenge. Thus, understanding the biology of chemoresistance is of great importance to overcome this challenge and will conceivably benefit the survival of ovarian cancer patients. Although mechanisms underlying the development of chemoresistance are still ambiguous, accumulating evidence has supported an integral role of cancer stem cells (CSCs) in recurrence following chemotherapy. Recently, tumor metabolism has gained interest as a reason of chemoresistance in tumors and chemotherapeutic drugs in combination with metabolism targeting approaches has been found promising in overcoming therapeutic resistance. In this review, we will summarize recent studies on CSCs and metabolism in ovarian cancer and discuss possible role of CSCs metabolism in chemoresistance.

Keywords: Ovarian Neoplasms; Drug Resistance, Neoplasm; Cancer Stem Cells; Metabolism

BACKGROUND

Ovarian cancer is most deadly gynecologic malignancies worldwide. There were an estimated 239,000 new cases with 152,000 deaths in 2012 [1]. This high mortality is mainly due to late diagnosis with less than 20% of ovarian cancer patients are diagnosed at an early stage (International Federation of Gynecology and Obstetrics [FIGO] stage I and II). The 5-year survival rate of these patients is over 90%. However, this number is less than 30% in patients in an advanced stage (FIGO stage III and IV) as therapies become increasingly ineffective in treating metastatic ovarian cancer [2].

Most ovarian cancer patients undergo debulking surgery followed by chemotherapy. While approximately 75% of patients initially respond to the platinum/paclitaxel-based chemotherapy, most of them relapse with chemoresistance which results in treatment failure and causes over 90% of deaths [3]. Thus, understanding the molecular mechanisms underlying this drug resistance is important for the development of effective therapies to improve ovarian cancer patients' outcome.

Author Contributions

Writing - original draft: L.S.S., M.J., W.A.S.T.;

Writing - review & editing: L.S.S., M.J., W.A.S.T.

OVARIAN CANCER STEM/TUMOR-INITIATING CELLS

Cancer stem cells (CSCs) is a subpopulation of tumor cells with self-renewal and differentiation properties that can sustain tumor growth and recapitulate a heterogeneous tumor [4]. CSCs have been identified in hematologic malignancies and various solid tumors [5-9]. Experimental evidence for the existence of ovarian CSCs was first reported in 2005, when Bapat and colleagues [10] identified a tumorigenic clone from malignant ascites of a patient with ovarian cancer through multilayer spheroid culture. Thereafter, ovarian CSCs have been isolated in clinical specimens by various methods based on phenotypic and functional properties of CSC, such as the capability to form tumor spheroids under suspension culture, the efflux capacity of fluorescent dye Hoechst 33258 and stem cell marker expression [11-13].

CD44 is a cell-surface glycoprotein of hyaluronate receptor that plays a role in tumor stemness, recurrence and drug resistance in ovarian cancer. Paik et al. [14] identified CD44 as a marker for fallopian tube epithelial stem-like cells (FTESCs), and further suggested a role of FTESC in the initiation of serous tumors. CD44 in combination with other markers, such as CD117 [15], MyD88 [16], and CD24 [17] have been extensively used for ovarian CSCs isolation. For instance, Zhang et al. [15] isolated CD44⁺/CD117⁺ ovarian CSCs that were fully capable of re-generating the original tumor phenotype in mice, and were found to exhibit greater resistance (3.1-16.1 folds) to cisplatin and paclitaxel as compared to cells cultured under differentiating conditions. Several recent studies have shown that CD44 overexpression in ovarian cancer is associated with poor prognosis [18-20]. Specifically, Gao et al. [20] reported higher expression of CD44 in metastatic/recurrent ovarian cancer tissue samples as compared with matched primary tumor samples, and there is a significant association between CD44 expression and unfavorable prognosis. Further, knocking down of CD44 increased tumor cells' sensitivity to paclitaxel, indicating that CD44 up-regulation might be a critical event in the development of drug resistance in ovarian cancer [20].

CD133 (prominin-1) is a pentaspan transmembrane protein initially recognized as a marker for human hematopoietic stem cells [21]. CD133 has been defined as a CSC marker in various tumors, including ovarian cancer. It has been documented that CD133⁺ ovarian cancer cells possessed tumorigenic and aggressive capacity, as well as enhanced resistance to chemotherapies compared with CD133⁻ cells [22-24]. In particular, Baba and colleagues [24] reported the IC₅₀ value of cisplatin for CD133⁺ epithelial ovarian cancer cells was higher than that for CD133⁻ cells, indicating a greater chemoresistance in CD133⁺ cells. They further demonstrated that mRNA expression of CD133 correlates with chemoresistance capability of CD133⁺ cells. Similarly, lower cisplatin sensitivity and higher breast cancer resistance protein (ATP-binding cassette sub-family G member 2 [ABCG2]) gene expression which is implicated in drug efflux were detected in C-X-C chemokine receptor type 4 (CXCR4)⁺CD133⁺ CSCs in comparison with non-CSCs counterparts, suggesting a chemoresistant phenotype in CXCR4⁺CD133⁺ ovarian CSCs [25]. Moreover, CD133 overexpression is associated with ovarian cancer patients' response to treatment and clinical outcome. Zhang et al. [26] reported a correlation of CD133 expression with high-grade ovarian serous carcinoma, advanced stage disease, ascites levels, lack of response to chemotherapy, shorter overall survival time, and reduced disease-free survival. Interestingly, compared with matched primary tumors, the percentage of CD133⁺ cells in recurrent tumors is increased from 6.3% to 34.5% in patients with platinum-resistant recurrence [27]. These studies support a clinical significance of CD133 in ovarian cancer chemoresistance.

CD117, also known as stem cell growth factor receptor or c-Kit, is a tyrosine kinase oncoprotein. CD117⁺ ovarian cancer cells isolated from human ovarian serous carcinoma tissues and ascites exhibited 100-fold higher tumorigenic capability than CD117⁻ cells, and as few as 10³ CD117⁺ cells were sufficient to self-renew and give rise to heterogeneous tumors in mice [28]. Besides, it was further found CD117 expression was statistically correlated with resistance to platinum-paclitaxel chemotherapy, as only 10% (1/10) CD117⁺ patients were sensitive to chemotherapy while a sensitivity was found in 60% (9/15) CD117⁻ group, and correlated with shorter recurrence intervals [28]. These results indicate that CD117⁺ CSCs may escape from conventional chemotherapy, possess the ability to regenerate tumors and cause relapse after therapy. Based on an analysis of 56 patients with advanced serous ovarian cancer, the expression of CD117 was significantly correlated with worse response to first-line chemotherapy, decreased treatment-free interval and shorter overall survival [29], further supporting the importance of CD117 in ovarian cancer chemoresistance. Moreover, our group demonstrated that ovarian CSCs that showed high CD117 expression exhibited chemoresistance to clinically relevant doses of cisplatin and paclitaxel [30]. We further illustrated that hypoxia or HIF-1 α could upregulate the expression of CD117 which promotes chemoresistance through a Wnt/ β -catenin pathway. Knockdown or inhibition of CD117 increased chemosensitivity both in vitro and in vivo [30]. These results support the clinical relevance of CD117 in stemness and chemoresistance.

The aldehyde dehydrogenase (ALDH) superfamily comprises 19 isozymes that catalyze the oxidation of aldehyde. ALDH1A1, a major isoform in CSCs, has been described as a candidate ovarian CSC marker and is associated with chemoresistance [31,32]. Landen and colleagues first identified ALDH1A1⁺ cells possessing CSC phenotype in ovarian cancer cell lines. High ALDH expression was significantly associated with poor progression-free survival in ovarian cancer patients, and knockdown of ALDH1A1 sensitized ALDH1A1⁺ cells to taxane and platinum [32]. Silva et al. [31] found that the percentage of ALDH⁺ in SKOV-3 cells increased with an increase in the cisplatin dose, and these isolated ALDH⁺ showed greater viability and faster recovery after cisplatin treatment than ALDH⁻ cells, indicating greater chemoresistance in ALDH⁺ than ALDH⁻ cells. They further isolated ALDH⁺CD133⁺ cells that were able to initiate xenograft tumors with only 11 cells and found that the presence of ALDH⁺CD133⁺ cells in primary ovarian tumors predicts worse outcome in patients [31]. These findings indicate a role for ALDH1⁺ CSCs in drug resistance and may be a chemotherapy target for ovarian cancer.

CD24 and epithelial cell adhesion molecule (EpCAM) are putative ovarian CSCs markers, which also play a role in chemoresistance. CD24 is a glycosylphosphatidylinositol-linked cell surface adhesion molecule that is frequently detected in invasive ovarian carcinomas while usually absent in normal ovarian surface epithelium and adenomas [33]. High cytoplasmic CD24 expression in the invasive ovarian carcinomas predicts shorter overall survival (37 months vs. 98 months) [33]. CD24⁺ cells isolated from human ovarian tumors were relatively more resistant to cisplatin than the CD24⁻ counterpart [34]. Donahoe group isolated CD44⁺CD24⁺EpCAM⁺ E-cad⁻ subpopulation that possesses CSC characteristics with enhanced tumorigenic capacity in vivo and chemoresistance to doxorubicin, cisplatin, and paclitaxel therapeutics [35]. These CSCs could be stimulated by doxorubicin and preferentially inhibited by Müllerian inhibiting substance [35]. Tayama et al. [36] found an elevated expression of EpCAM in ovarian tumor tissues in patients after receiving platinum-based chemotherapy compared with that in corresponding tissues before chemotherapy, and patients with high EpCAM expression are less likely to respond to first-line platinum-based chemotherapy and are associated with poor survival [36].

The mechanisms underlying chemoresistance of CSCs are unclear. Drug efflux through ATP-binding cassette (ABC) transporters has been described as one of the reasons (Fig. 1). The up-regulation of 2 ABC transporters, P-glycoprotein (P-gp or ABCB1) and ABCG2, were frequently observed in ovarian CSCs [12,30]. The quiescent state of CSCs, which is essential for preserving the self-renewal function of stem cells, is also a critical factor in the drug resistance. Unlike the rapidly dividing cells, the relatively quiescent CSCs are insensitive to most of the chemotherapeutic drugs [37]. Indeed, quiescent CSCs that display high chemoresistant capability have been identified in ovarian cancer cells lines [38] and tumor tissue specimens [34]. In addition, DNA repair and autophagy are also implicated in the chemoresistance of ovarian CSCs. For example, polymerase η (Pol η) enhanced cisplatin-induced apoptosis and blocked the cisplatin-induced enrichment of ovarian CSCs, suggesting that an increase in expression of DNA Pol η in CD44⁺/CD117⁺ contributes to drug resistance [39]. Similarly, CD44⁺/CD117⁺ ovarian CSCs have higher autophagy levels than non-CSCs counterparts, and inhibition of autophagy impairs the ability of ovarian CSCs to resist chemotherapy in vitro and in vivo [40].

OVARIAN CANCER METABOLISM

Metabolic reprogramming was first seen as a consequence of oncogene activation. Later, loss-of-function mutations of metabolic enzymes have also been observed in the pathogenesis of several hereditary forms of cancer such as ovarian cancer and breast cancer. These data also suggest that metabolic reprogramming could be the cause, rather than the consequence, of tumor transformation [41]. Glycolysis is a coordinated series of chemical reactions that convert one molecule of glucose into lactate, and generate 2 molecules of ATP [42], which are the major source of energy of cancer cells [43]. Unlike normal tissues, tumor

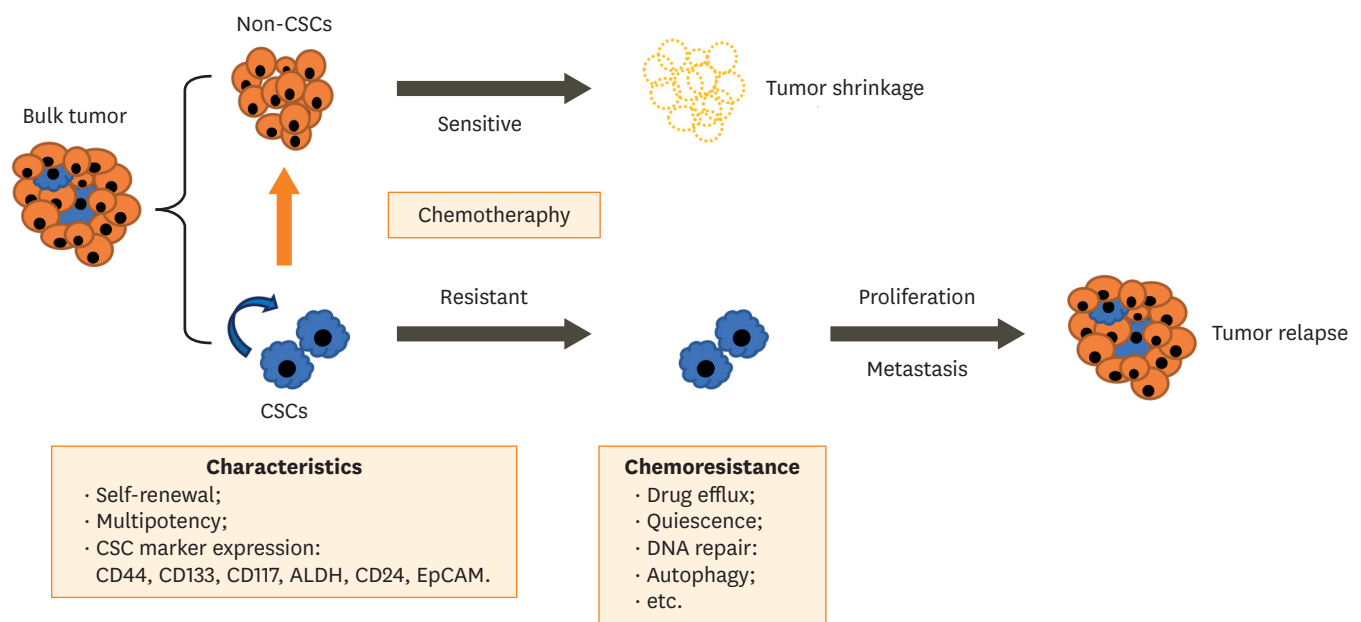


Fig. 1. Schematic representation of CSCs in ovarian cancer chemoresistance. Chemotherapeutics fail to eliminate CSCs which can regenerate the entire tumor and ultimately result in a relapse. Ovarian CSCs are resistant to chemotherapy due to several mechanisms including increased drug efflux, quiescence, enhanced DNA repair, autophagy, etc.
ALDH, aldehyde dehydrogenase; CSC, cancer stem cell; EpCAM, epithelial cell adhesion molecule.

cells preferentially metabolize glucose by glycolysis instead of oxidative phosphorylation (OXPHOS), even in the presence of oxygen. The so called “Warburg effect” is one of the key steps of cancer development [44,45]. This up-regulation of glycolysis will generate more lactate via lactate dehydrogenase. The acidity in the microenvironment is known to facilitate tumor invasion and metastasis [46,47]. Furthermore, the accelerated glycolysis in tumors also contributes to chemoresistance [48-52]. While the underlying mechanisms of action remain unclear, it has been shown that downregulation of glycolytic enzymes could improve or even overcome drug resistance [53,54].

Many glycolytic inhibitors are currently under preclinical or clinical development (**Fig. 2**). Hexokinase 2 (HK2) is a key glycolytic enzyme that phosphorylates glucose into glucose-6-phosphate (G6P). In ovarian cancer, HK2 is highly expressed in epithelial ovarian cancer tissues, especially the serous subtype, but is scanty in normal, benign, and borderline ovarian tumors. Also, HK2 expression is strongly linked to chemoresistance [55,56]. Collectively, HK2 may be a promising target for ovarian cancer treatment. Lonidamine, a HK2 inhibitor, has been used for cancer treatment in clinics in Europe [57]. Lonidamine has been shown to revert the resistance to cisplatin and paclitaxel in advanced ovarian cancer [58].

Phosphofructokinase-1 (PFK-1) catalyzes the conversion of fructose 6-phosphate and ATP to fructose 1,6-bisphosphate and ADP. PFK-1 regulates the highly exergonic and irreversible step of glycolysis regardless of the cancer type. It has been demonstrated that loss of 6-phosphofructo-2-kinase/fructose-2, 6-bisphosphatase 3/4 (PFKFB3/4), the key enzyme regulating PFK-1 activity, can increase caspase 3/7 activity and reactive oxygen species (ROS) levels, thus enhancing mitotic cell death via phosphoinositide 3-kinase (PI3K)/Akt pathway when combined with paclitaxel treatment in mitotically arrested ovarian cancer [59]. The 3-(3-pyridinyl)-1-(4-pyridinyl)-2-propen-1-one (3PO) is an inhibitor of PFKFB3, which has been demonstrated to suppress glycolysis and tumor growth [60].

The 3-phosphoinositide-dependent protein kinase-1 (PDK1) is a kinase enzyme which acts to inactivate the enzyme pyruvate dehydrogenase by phosphorylation, resulting in the

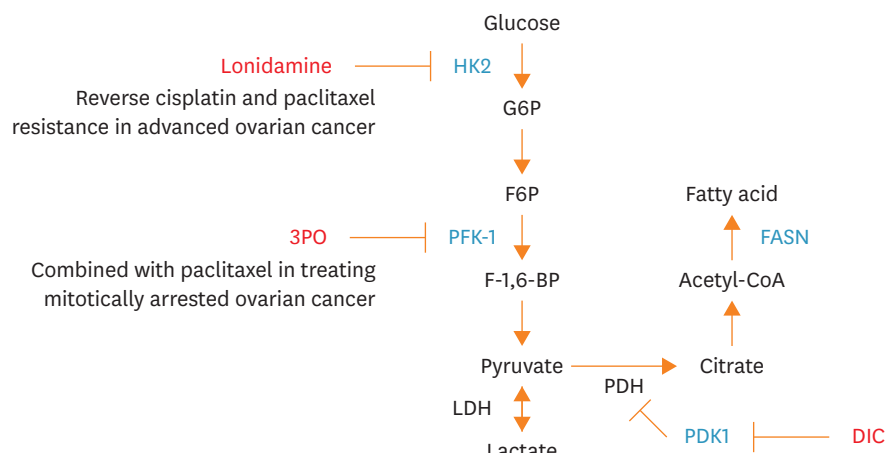


Fig. 2. Schematic of key glycolysis and lipogenesis enzymes and inhibitors. 3PO, 3-(3-pyridinyl)-1-(4-pyridinyl)-2-propen-1-one; DIC, dicumarol; F-1,6-BP, fructose 1,6-bisphosphate; F6P, fructose-6-phosphate; FASN, fatty acid synthase; G6P, glucose-6-phosphate; HK2, hexokinase 2; LDH, lactate dehydrogenase; PDH, phosphate dehydrogenase; PDK1, 3-phosphoinositide-dependent protein kinase-1; PFK-1, phosphofructokinase-1.

suppression of OXPHOS in mitochondria [48]. PDK1 is almost absent in normal ovaries, and 60% of benign ovarian tumors. Overexpression of PDK1 was evident in borderline and low- to high-grade ovarian tumors and correlates with survival in high-grade tumors [61,62]. PDK1 is also highly expressed in chemoresistant ovarian cancer cells [63]. Dicumarol could inhibit PDK1 activity, shifting the glucose metabolism from aerobic glycolysis to OXPHOS, increasing ROS levels, and inducing apoptosis *in vitro* and *in vivo* in ovarian cancer [64].

Lipid is strongly associated with ovarian cancer progression. Several specific lipids are increased in ovarian cancer patients [65]. Fatty acid synthase (FASN) is one of the most important biosynthetic enzymes in lipogenesis. It has been reported that FASN expression significantly correlates with tumor grade and FIGO staging. Patients with FASN overexpression tend to have a worse overall survival rate [66]. Ovarian tumors overexpressed FASN can be inhibited by FASN blockers, whereas normal tissues are FASN negative [67]. ERBB-PI3K-mechanistic target of rapamycin complex 1 (mTORC1) up-regulates FASN through the activation of the transcription factor sterol regulatory element-binding protein (SREBP)-1c [68]. FASN in turn can stimulate PI3K-mTORC1 signaling [69,70]. Furthermore, inhibition of FASN can induce apoptosis in platinum-resistant ovarian cancer cells and may reverse cisplatin resistance [71].

Epidemiological and clinical studies have suggested that polyunsaturated fatty acids (PUFAs) could have health benefits and therapeutic effects in cancer treatment. A recent study demonstrated that ω -3 and ω -6 PUFAs could induce cell death in ovarian cancer cell lines through ROS-dependent MAP kinase activation [72]. Moreover, Li et al. [73] showed that ovarian CSCs identified as ALDH⁺/CD133⁺ population have higher levels of unsaturated fatty acids (UFAs) and stearoyl-CoA desaturase-1 (SCD1, an enzyme produces mono-UFAs) compared to non-CSCs (ALDH⁻/CD133⁻). Knockdown or inhibition of SCD1 could reduce CSC markers ALDH1A1, Sox2, Nanog, and Oct-4 expression in ovarian CSCs and patients derived CSCs. Furthermore, inhibition of lipid desaturation reduces the nuclear factor (NF)- κ B activity in ovarian CSCs [73].

CSC METABOLISM AND CHEMORESISTANCE

Several studies have indicated distinct metabolic features exist in CSCs. Some studies have shown that CSCs bear more active glycolytic activity than differentiated tumor cells [74-77]. For example, by comparing metabolite profiles of ovarian CSC-like spheroids and parental cells, it is found that spheroid cells mainly relied on anaerobic glycolysis and involved direct glucose oxidation in the pentose cycle [78]. Similarly, more active glycolysis was observed in CSCs isolated in rodent ovarian surface epithelium compared with parental cells [79]. This distinct glycolytic metabolism profile in CSCs indicates that CSCs are endowed with the capacity to survive under stress conditions, in particular hypoxia, and may contribute to chemoresistance [78]. In the contrary, CD44⁺CD117⁺ ovarian CSCs showed an elevated expression of enzymes associated with OXPHOS with higher mitochondrial ROS production, suggesting that the mitochondria electron respiratory chain is preferentially utilized [80]. Mitochondrial metabolism is also described in lung [81] and pancreatic CSCs, and that this OXPHOS-dependent metabolic phenotype seems to be associated with a selective advantage to survive in nutrient starvation and other environmental stress conditions [80,82,83]. It is still controversial regarding if CSCs use glycolytic or mitochondrial respiration pathway in comparison with non-CSCs [77,84,85]. However, it is noted that the metabolic plasticity that

CSCs may alter metabolic phenotypes in adaptation to microenvironmental fluctuations [83,86]. Moreover, elevated fatty acid β -oxidation (FAO) activity was found in ovarian CSCs in comparison with non-CSC counterpart [80]. In breast cancer, an elevated FAO is responsible for self-renewal and chemoresistance of the CSCs [87]. These biochemical characteristics suggest a possibility that the metabolism in CSCs may be vulnerable to therapeutic intervention.

REFERENCES

1. Siegel RL, Miller KD, Jemal A. Cancer statistics, 2018. *CA Cancer J Clin* 2018;68:7-30.
[PUBMED](#) | [CROSSREF](#)
2. Lengyel E. Ovarian cancer development and metastasis. *Am J Pathol* 2010;177:1053-64.
[PUBMED](#) | [CROSSREF](#)
3. Agarwal R, Kaye SB. Ovarian cancer: strategies for overcoming resistance to chemotherapy. *Nat Rev Cancer* 2003;3:502-16.
[PUBMED](#) | [CROSSREF](#)
4. Jordan CT, Guzman ML, Noble M. Cancer stem cells. *N Engl J Med* 2006;355:1253-61.
[PUBMED](#) | [CROSSREF](#)
5. Bonnet D, Dick JE. Human acute myeloid leukemia is organized as a hierarchy that originates from a primitive hematopoietic cell. *Nat Med* 1997;3:730-7.
[PUBMED](#) | [CROSSREF](#)
6. Al-Hajj M, Wicha MS, Benito-Hernandez A, Morrison SJ, Clarke MF. Prospective identification of tumorigenic breast cancer cells. *Proc Natl Acad Sci U S A* 2003;100:3983-8.
[PUBMED](#) | [CROSSREF](#)
7. Singh SK, Hawkins C, Clarke ID, Squire JA, Bayani J, Hide T, et al. Identification of human brain tumour initiating cells. *Nature* 2004;432:396-401.
[PUBMED](#) | [CROSSREF](#)
8. Collins AT, Maitland NJ. Prostate cancer stem cells. *Eur J Cancer* 2006;42:1213-8.
[PUBMED](#) | [CROSSREF](#)
9. Ricci-Vitiani L, Lombardi DG, Pilozzi E, Biffoni M, Todaro M, Peschle C, et al. Identification and expansion of human colon-cancer-initiating cells. *Nature* 2007;445:111-5.
[PUBMED](#) | [CROSSREF](#)
10. Bapat SA, Mali AM, Koppikar CB, Kurrey NK. Stem and progenitor-like cells contribute to the aggressive behavior of human epithelial ovarian cancer. *Cancer Res* 2005;65:3025-9.
[PUBMED](#) | [CROSSREF](#)
11. Hu L, McArthur C, Jaffe RB. Ovarian cancer stem-like side-population cells are tumorigenic and chemoresistant. *Br J Cancer* 2010;102:1276-83.
[PUBMED](#) | [CROSSREF](#)
12. Yasuda K, Torigoe T, Morita R, Kuroda T, Takahashi A, Matsuzaki J, et al. Ovarian cancer stem cells are enriched in side population and aldehyde dehydrogenase bright overlapping population. *PLoS One* 2013;8:e68187.
[PUBMED](#) | [CROSSREF](#)
13. Boesch M, Zeimet AG, Reimer D, Schmidt S, Gastl G, Parson W, et al. The side population of ovarian cancer cells defines a heterogeneous compartment exhibiting stem cell characteristics. *Oncotarget* 2014;5:7027-39.
[PUBMED](#) | [CROSSREF](#)
14. Paik DY, Janzen DM, Schafenacker AM, Velasco VS, Shung MS, Cheng D, et al. Stem-like epithelial cells are concentrated in the distal end of the fallopian tube: a site for injury and serous cancer initiation. *Stem Cells* 2012;30:2487-97.
[PUBMED](#) | [CROSSREF](#)
15. Zhang S, Balch C, Chan MW, Lai HC, Matei D, Schilder JM, et al. Identification and characterization of ovarian cancer-initiating cells from primary human tumors. *Cancer Res* 2008;68:4311-20.
[PUBMED](#) | [CROSSREF](#)
16. Craveiro V, Yang-Hartwich Y, Holmberg JC, Joo WD, Sumi NJ, Pizzonia J, et al. Phenotypic modifications in ovarian cancer stem cells following Paclitaxel treatment. *Cancer Med* 2013;2:751-62.
[PUBMED](#) | [CROSSREF](#)

17. Wei X, Dombkowski D, Meirelles K, Pieretti-Vanmarcke R, Szotek PP, Chang HL, et al. Mullerian inhibiting substance preferentially inhibits stem/progenitors in human ovarian cancer cell lines compared with chemotherapeutics. *Proc Natl Acad Sci U S A* 2010;107:18874-9.
[PUBMED](#) | [CROSSREF](#)
18. Ryabtseva OD, Lukianova NY, Shmurakov YA, Polishchuk LZ, Antipova SV. Significance of adhesion molecules expression for estimation of serous ovarian cancer prognosis. *Exp Oncol* 2013;35:211-8.
[PUBMED](#)
19. Chen H, Hao J, Wang L, Li Y. Coexpression of invasive markers (uPA, CD44) and multiple drug-resistance proteins (MDR1, MRP2) is correlated with epithelial ovarian cancer progression. *Br J Cancer* 2009;101:432-40.
[PUBMED](#) | [CROSSREF](#)
20. Gao Y, Foster R, Yang X, Feng Y, Shen JK, Mankin HJ, et al. Up-regulation of CD44 in the development of metastasis, recurrence and drug resistance of ovarian cancer. *Oncotarget* 2015;6:9313-26.
[PUBMED](#) | [CROSSREF](#)
21. Yin AH, Miraglia S, Zanjani ED, Almeida-Porada G, Ogawa M, Leary AG, et al. AC133, a novel marker for human hematopoietic stem and progenitor cells. *Blood* 1997;90:5002-12.
[PUBMED](#)
22. Ferrandina G, Bonanno G, Pierelli L, Perillo A, Procoli A, Mariotti A, et al. Expression of CD133-1 and CD133-2 in ovarian cancer. *Int J Gynecol Cancer* 2008;18:506-14.
[PUBMED](#) | [CROSSREF](#)
23. Curley MD, Therrien VA, Cummings CL, Sergent PA, Koulouris CR, Friel AM, et al. CD133 expression defines a tumor initiating cell population in primary human ovarian cancer. *Stem Cells* 2009;27:2875-83.
[PUBMED](#) | [CROSSREF](#)
24. Baba T, Convery PA, Matsumura N, Whitaker RS, Kondoh E, Perry T, et al. Epigenetic regulation of CD133 and tumorigenicity of CD133+ ovarian cancer cells. *Oncogene* 2009;28:209-18.
[PUBMED](#) | [CROSSREF](#)
25. Cioffi M, D'Alterio C, Camerlingo R, Tirino V, Consales C, Riccio A, et al. Identification of a distinct population of CD133(+)/CXCR4(+) cancer stem cells in ovarian cancer. *Sci Rep* 2015;5:10357.
[PUBMED](#) | [CROSSREF](#)
26. Zhang J, Guo X, Chang DY, Rosen DG, Mercado-Uribe I, Liu J. CD133 expression associated with poor prognosis in ovarian cancer. *Mod Pathol* 2012;25:456-64.
[PUBMED](#) | [CROSSREF](#)
27. Steg AD, Bevis KS, Katre AA, Ziebarth A, Dobbin ZC, Alvarez RD, et al. Stem cell pathways contribute to clinical chemoresistance in ovarian cancer. *Clin Cancer Res* 2012;18:869-81.
[PUBMED](#) | [CROSSREF](#)
28. Luo L, Zeng J, Liang B, Zhao Z, Sun L, Cao D, et al. Ovarian cancer cells with the CD117 phenotype are highly tumorigenic and are related to chemotherapy outcome. *Exp Mol Pathol* 2011;91:596-602.
[PUBMED](#) | [CROSSREF](#)
29. Raspollini MR, Amunni G, Villanucci A, Baroni G, Taddei A, Taddei GL. c-KIT expression and correlation with chemotherapy resistance in ovarian carcinoma: an immunocytochemical study. *Ann Oncol* 2004;15:594-7.
[PUBMED](#) | [CROSSREF](#)
30. Chau WK, Ip CK, Mak AS, Lai HC, Wong AS. c-Kit mediates chemoresistance and tumor-initiating capacity of ovarian cancer cells through activation of Wnt/ β -catenin-ATP-binding cassette G2 signaling. *Oncogene* 2013;32:2767-81.
[PUBMED](#) | [CROSSREF](#)
31. Silva IA, Bai S, McLean K, Yang K, Griffith K, Thomas D, et al. Aldehyde dehydrogenase in combination with CD133 defines angiogenic ovarian cancer stem cells that portend poor patient survival. *Cancer Res* 2011;71:3991-4001.
[PUBMED](#) | [CROSSREF](#)
32. Landen CN Jr, Goodman B, Katre AA, Steg AD, Nick AM, Stone RL, et al. Targeting aldehyde dehydrogenase cancer stem cells in ovarian cancer. *Mol Cancer Ther* 2010;9:3186-99.
[PUBMED](#) | [CROSSREF](#)
33. Kristiansen G, Denkert C, Schlüns K, Dahl E, Pilarsky C, Hauptmann S. CD24 is expressed in ovarian cancer and is a new independent prognostic marker of patient survival. *Am J Pathol* 2002;161:1215-21.
[PUBMED](#) | [CROSSREF](#)
34. Gao MQ, Choi YP, Kang S, Youn JH, Cho NH. CD24+ cells from hierarchically organized ovarian cancer are enriched in cancer stem cells. *Oncogene* 2010;29:2672-80.
[PUBMED](#) | [CROSSREF](#)

35. Meirelles K, Benedict LA, Dombkowski D, Pepin D, Preffer FI, Teixeira J, et al. Human ovarian cancer stem/progenitor cells are stimulated by doxorubicin but inhibited by Mullerian inhibiting substance. *Proc Natl Acad Sci U S A* 2012;109:2358-63.
[PUBMED](#) | [CROSSREF](#)
36. Tayama S, Motohara T, Narantuya D, Li C, Fujimoto K, Sakaguchi I, et al. The impact of EpCAM expression on response to chemotherapy and clinical outcomes in patients with epithelial ovarian cancer. *Oncotarget* 2017;8:44312-25.
[PUBMED](#) | [CROSSREF](#)
37. Chen W, Dong J, Haiech J, Kilhoffer MC, Zeniou M. Cancer stem cell quiescence and plasticity as major challenges in cancer therapy. *Stem Cells Int* 2016;2016:1740936.
[PUBMED](#) | [CROSSREF](#)
38. Kusumbe AP, Bapat SA. Cancer stem cells and aneuploid populations within developing tumors are the major determinants of tumor dormancy. *Cancer Res* 2009;69:9245-53.
[PUBMED](#) | [CROSSREF](#)
39. Srivastava AK, Han C, Zhao R, Cui T, Dai Y, Mao C, et al. Enhanced expression of DNA polymerase eta contributes to cisplatin resistance of ovarian cancer stem cells. *Proc Natl Acad Sci U S A* 2015;112:4411-6.
[PUBMED](#) | [CROSSREF](#)
40. Pagotto A, Pilotto G, Mazzoldi EL, Nicoletto MO, Frezzini S, Pastò A, et al. Autophagy inhibition reduces chemoresistance and tumorigenic potential of human ovarian cancer stem cells. *Cell Death Dis* 2017;8:e2943.
[PUBMED](#) | [CROSSREF](#)
41. Gottlieb E, Tomlinson IP. Mitochondrial tumour suppressors: a genetic and biochemical update. *Nat Rev Cancer* 2005;5:857-66.
[PUBMED](#) | [CROSSREF](#)
42. Pathania D, Millard M, Neamati N. Opportunities in discovery and delivery of anticancer drugs targeting mitochondria and cancer cell metabolism. *Adv Drug Deliv Rev* 2009;61:1250-75.
[PUBMED](#) | [CROSSREF](#)
43. Porporato PE, Filigheddu N, Bravo-San Pedro JM, Kroemer G, Galluzzi L. Mitochondrial metabolism and cancer. *Cell Res*. Forthcoming 2017.
[PUBMED](#) | [CROSSREF](#)
44. Racker E. Bioenergetics and the problem of tumor growth. *Am Sci* 1972;60:56-63.
[PUBMED](#)
45. Koppenol WH, Bounds PL, Dang CV. Otto Warburg's contributions to current concepts of cancer metabolism. *Nat Rev Cancer* 2011;11:325-37.
[PUBMED](#) | [CROSSREF](#)
46. Gatenby RA, Gawlinski ET. The glycolytic phenotype in carcinogenesis and tumor invasion: insights through mathematical models. *Cancer Res* 2003;63:3847-54.
[PUBMED](#)
47. Gillies RJ, Robey I, Gatenby RA. Causes and consequences of increased glucose metabolism of cancers. *J Nucl Med* 2008;49 Suppl 2:24S-42S.
[PUBMED](#) | [CROSSREF](#)
48. Gogvadze V, Orrenius S, Zhivotovsky B. Mitochondria in cancer cells: what is so special about them? *Trends Cell Biol* 2008;18:165-73.
[PUBMED](#) | [CROSSREF](#)
49. Liu H, Liu Y, Zhang JT. A new mechanism of drug resistance in breast cancer cells: fatty acid synthase overexpression-mediated palmitate overproduction. *Mol Cancer Ther* 2008;7:263-70.
[PUBMED](#) | [CROSSREF](#)
50. Wang JB, Erickson JW, Fuji R, Ramachandran S, Gao P, Dinavahi R, et al. Targeting mitochondrial glutaminase activity inhibits oncogenic transformation. *Cancer Cell* 2010;18:207-19.
[PUBMED](#) | [CROSSREF](#)
51. Zhou M, Zhao Y, Ding Y, Liu H, Liu Z, Fodstad O, et al. Warburg effect in chemosensitivity: targeting lactate dehydrogenase-A re-sensitizes taxol-resistant cancer cells to taxol. *Mol Cancer* 2010;9:33.
[PUBMED](#) | [CROSSREF](#)
52. Zhao Y, Liu H, Liu Z, Ding Y, Ledoux SP, Wilson GL, et al. Overcoming trastuzumab resistance in breast cancer by targeting dysregulated glucose metabolism. *Cancer Res* 2011;71:4585-97.
[PUBMED](#) | [CROSSREF](#)
53. Roh JL, Park JY, Kim EH, Jang HJ, Kwon M. Activation of mitochondrial oxidation by PDK2 inhibition reverses cisplatin resistance in head and neck cancer. *Cancer Lett* 2016;371:20-9.
[PUBMED](#) | [CROSSREF](#)

54. Taniguchi K, Sakai M, Sugito N, Kuranaga Y, Kumazaki M, Shinohara H, et al. PKM1 is involved in resistance to anti-cancer drugs. *Biochem Biophys Res Commun* 2016;473:174-80.
[PUBMED](#) | [CROSSREF](#)
55. Jin Z, Gu J, Xin X, Li Y, Wang H. Expression of hexokinase 2 in epithelial ovarian tumors and its clinical significance in serous ovarian cancer. *Eur J Gynaecol Oncol* 2014;35:519-24.
[PUBMED](#)
56. Suh DH, Kim MA, Kim H, Kim MK, Kim HS, Chung HH, et al. Association of overexpression of hexokinase II with chemoresistance in epithelial ovarian cancer. *Clin Exp Med* 2014;14:345-53.
[PUBMED](#) | [CROSSREF](#)
57. Brawer MK. Lonidamine: basic science and rationale for treatment of prostatic proliferative disorders. *Rev Urol* 2005;7 Suppl 7:S21-6.
[PUBMED](#)
58. De Lena M, Lorusso V, Latorre A, Fanizza G, Gargano G, Caporusso L, et al. Paclitaxel, cisplatin and lonidamine in advanced ovarian cancer. A phase II study. *Eur J Cancer* 2001;37:364-8.
[PUBMED](#) | [CROSSREF](#)
59. Taylor C, Mannion D, Miranda F, Karaminejadranjbar M, Herrero-Gonzalez S, Hellner K, et al. Loss of PFKFB4 induces cell death in mitotically arrested ovarian cancer cells. *Oncotarget* 2017;8:17960-80.
[PUBMED](#) | [CROSSREF](#)
60. Xintaropoulou C, Ward C, Wise A, Marston H, Turnbull A, Langdon SP. A comparative analysis of inhibitors of the glycolysis pathway in breast and ovarian cancer cell line models. *Oncotarget* 2015;6:25677-95.
[PUBMED](#) | [CROSSREF](#)
61. Lohneis P, Darb-Esfahani S, Dietel M, Braicu I, Sehoul J, Arsenic R. PDK1 is expressed in ovarian serous carcinoma and correlates with improved survival in high-grade tumors. *Anticancer Res* 2015;35:6329-34.
[PUBMED](#)
62. Ahmed N, Riley C, Quinn MA. An immunohistochemical perspective of PPAR beta and one of its putative targets PDK1 in normal ovaries, benign and malignant ovarian tumours. *Br J Cancer* 2008;98:1415-24.
[PUBMED](#) | [CROSSREF](#)
63. Wu YH, Chang TH, Huang YF, Chen CC, Chou CY. COL11A1 confers chemoresistance on ovarian cancer cells through the activation of Akt/c/EBP β pathway and PDK1 stabilization. *Oncotarget* 2015;6:23748-63.
[PUBMED](#) | [CROSSREF](#)
64. Zhang W, Su J, Xu H, Yu S, Liu Y, Zhang Y, et al. Dicumarol inhibits PDK1 and targets multiple malignant behaviors of ovarian cancer cells. *PLoS One* 2017;12:e0179672.
[PUBMED](#) | [CROSSREF](#)
65. Braicu EI, Darb-Esfahani S, Schmitt WD, Koistinen KM, Heiskanen L, Pöhö P, et al. High-grade ovarian serous carcinoma patients exhibit profound alterations in lipid metabolism. *Oncotarget* 2017;8:102912-22.
[PUBMED](#) | [CROSSREF](#)
66. Cai Y, Wang J, Zhang L, Wu D, Yu D, Tian X, et al. Expressions of fatty acid synthase and HER2 are correlated with poor prognosis of ovarian cancer. *Med Oncol* 2015;32:391.
[PUBMED](#) | [CROSSREF](#)
67. Veigel D, Wagner R, Stübiger G, Wuczowski M, Filipits M, Horvat R, et al. Fatty acid synthase is a metabolic marker of cell proliferation rather than malignancy in ovarian cancer and its precursor cells. *Int J Cancer* 2015;136:2078-90.
[PUBMED](#) | [CROSSREF](#)
68. Furuta E, Pai SK, Zhan R, Bandyopadhyay S, Watabe M, Mo YY, et al. Fatty acid synthase gene is up-regulated by hypoxia via activation of Akt and sterol regulatory element binding protein-1. *Cancer Res* 2008;68:1003-11.
[PUBMED](#) | [CROSSREF](#)
69. Grunt TW, Wagner R, Grusch M, Berger W, Singer CF, Marian B, et al. Interaction between fatty acid synthase- and ErbB-systems in ovarian cancer cells. *Biochem Biophys Res Commun* 2009;385:454-9.
[PUBMED](#) | [CROSSREF](#)
70. Tomek K, Wagner R, Varga F, Singer CF, Karlic H, Grunt TW. Blockade of fatty acid synthase induces ubiquitination and degradation of phosphoinositide-3-kinase signaling proteins in ovarian cancer. *Mol Cancer Res* 2011;9:1767-79.
[PUBMED](#) | [CROSSREF](#)
71. Bauerschlag DO, Maass N, Leonhardt P, Verburg FA, Pecks U, Zeppernick F, et al. Fatty acid synthase overexpression: target for therapy and reversal of chemoresistance in ovarian cancer. *J Transl Med* 2015;13:146.
[PUBMED](#) | [CROSSREF](#)

72. Tanaka A, Yamamoto A, Murota K, Tsujiuchi T, Iwamori M, Fukushima N. Polyunsaturated fatty acids induce ovarian cancer cell death through ROS-dependent MAP kinase activation. *Biochem Biophys Res Commun* 2017;493:468-73.
[PUBMED](#) | [CROSSREF](#)
73. Li J, Condello S, Thomes-Pepin J, Ma X, Xia Y, Hurley TD, et al. Lipid desaturation is a metabolic marker and therapeutic target of ovarian cancer stem cells. *Cell Stem Cell* 2017;20:303-314.e5.
[PUBMED](#) | [CROSSREF](#)
74. Liu PP, Liao J, Tang ZJ, Wu WJ, Yang J, Zeng ZL, et al. Metabolic regulation of cancer cell side population by glucose through activation of the Akt pathway. *Cell Death Differ* 2014;21:124-35.
[PUBMED](#) | [CROSSREF](#)
75. Palorini R, Votta G, Balestrieri C, Monestiroli A, Olivieri S, Vento R, et al. Energy metabolism characterization of a novel cancer stem cell-like line 3AB-OS. *J Cell Biochem* 2014;115:368-79.
[PUBMED](#) | [CROSSREF](#)
76. Zhou Y, Zhou Y, Shingu T, Feng L, Chen Z, Ogasawara M, et al. Metabolic alterations in highly tumorigenic glioblastoma cells: preference for hypoxia and high dependency on glycolysis. *J Biol Chem* 2011;286:32843-53.
[PUBMED](#) | [CROSSREF](#)
77. Deshmukh A, Deshpande K, Arfuso F, Newsholme P, Dharmarajan A. Cancer stem cell metabolism: a potential target for cancer therapy. *Mol Cancer* 2016;15:69.
[PUBMED](#) | [CROSSREF](#)
78. Liao J, Qian F, Tchabo N, Mhaweche-Fauceglia P, Beck A, Qian Z, et al. Ovarian cancer spheroid cells with stem cell-like properties contribute to tumor generation, metastasis and chemotherapy resistance through hypoxia-resistant metabolism. *PLoS One* 2014;9:e84941.
[PUBMED](#) | [CROSSREF](#)
79. Anderson AS, Roberts PC, Frisard MI, Hulver MW, Schmelz EM. Ovarian tumor-initiating cells display a flexible metabolism. *Exp Cell Res* 2014;328:44-57.
[PUBMED](#) | [CROSSREF](#)
80. Pastò A, Bellio C, Pilotto G, Ciminale V, Silic-Benussi M, Guzzo G, et al. Cancer stem cells from epithelial ovarian cancer patients privilege oxidative phosphorylation, and resist glucose deprivation. *Oncotarget* 2014;5:4305-19.
[PUBMED](#) | [CROSSREF](#)
81. Ye XQ, Li Q, Wang GH, Sun FF, Huang GJ, Bian XW, et al. Mitochondrial and energy metabolism-related properties as novel indicators of lung cancer stem cells. *Int J Cancer* 2011;129:820-31.
[PUBMED](#) | [CROSSREF](#)
82. Viale A, Pettazzoni P, Lyssiotis CA, Ying H, Sánchez N, Marchesini M, et al. Oncogene ablation-resistant pancreatic cancer cells depend on mitochondrial function. *Nature* 2014;514:628-32.
[PUBMED](#) | [CROSSREF](#)
83. Sancho P, Burgos-Ramos E, Tavera A, Bou Kheir T, Jagust P, Schoenhals M, et al. MYC/PGC-1 α balance determines the metabolic phenotype and plasticity of pancreatic cancer stem cells. *Cell Metab* 2015;22:590-605.
[PUBMED](#) | [CROSSREF](#)
84. Sancho P, Barneda D, Heeschen C. Hallmarks of cancer stem cell metabolism. *Br J Cancer* 2016;114:1305-12.
[PUBMED](#) | [CROSSREF](#)
85. Peiris-Pagès M, Martínez-Outschoorn UE, Pestell RG, Sotgia F, Lisanti MP. Cancer stem cell metabolism. *Breast Cancer Res* 2016;18:55.
[PUBMED](#) | [CROSSREF](#)
86. Vlashi E, Lagadec C, Vergnes L, Matsutani T, Masui K, Poulou M, et al. Metabolic state of glioma stem cells and nontumorigenic cells. *Proc Natl Acad Sci U S A* 2011;108:16062-7.
[PUBMED](#) | [CROSSREF](#)
87. Wang T, Fahrman JF, Lee H, Li YJ, Tripathi SC, Yue C, et al. JAK/STAT3-regulated fatty acid β -oxidation is critical for breast cancer stem cell self-renewal and chemoresistance. *Cell Metab* 2018;27:136-150.e5.
[PUBMED](#) | [CROSSREF](#)